



MIDWEST WIRELINE

GAMMA RAY / CALIPER LOG

Company Murfin Drilling Company, Inc.

Well C-W Unit #1-14

Field
County Cheyenne State Kansas

Location: API #: 15-023-21601-00-00

SEC 14 TWP 1S RGE 40W

Permanent Datum Ground Level Elevation 3367
Log Measured From Kelly Bushing
Drilling Measured From Kelly Bushing

Other Services
CNL/CDL
DIL/MEL
BHCS
Elevation
K.B. 3372
D.F.
G.L. 3367

Date 2/21/2023

Run Number	One	
Type Log	BHV	
Depth Driller	5160	
Depth Logger	5162	
Bottom Logged Interval	5150	
Top Logged Interval	200	
Type Fluid In Hole	Chemical	
Salinity, PPM CL	1500	
Density	9.3	
Level	Full	
Max. Rec. Temp. F	128	
Operating Rig Time	6 Hours	
Equipment -- Location	P-108 HAYS	
Recorded By	D. Schmidt	
Witnessed By	Saman Sharifaie	

Borehole Record				Casing Record			
Run No.	Bit	From	To	Size	Wgt.	From	To
One	12.25	0	217	8.625	23	0	217
Two	7.875	217	TD				

<<< Fold Here >>>

All interpretations are opinions based on inferences from electrical or other measurements and Midwest Wireline LLC cannot and does not guarantee the accuracy or correctness of any interpretation, and Midwest Wireline LLC will not be liable or responsible for any loss, costs, damages, or expenses incurred or sustained by anyone resulting from any interpretation made by any of our officers, agents or employees.

Comments

N/A DENOTES NOT AVAILABLE OR NON-APPLICABLE.

St Francis,
North on Rd 14, turns into Rd 15,
North to BB Rd, 3/4 East,
North and West into

Log Measured From: Kelly Bushing 5 Ft. Above Permanent Datum

THANK YOU FOR USING MIDWEST WIRELINE LLC
785-625-3858

Your Midwest Wireline Crew

Engineer: D. Schmidt
Operator:
Operator:
Operator:

This Log Record Was Witnessed By

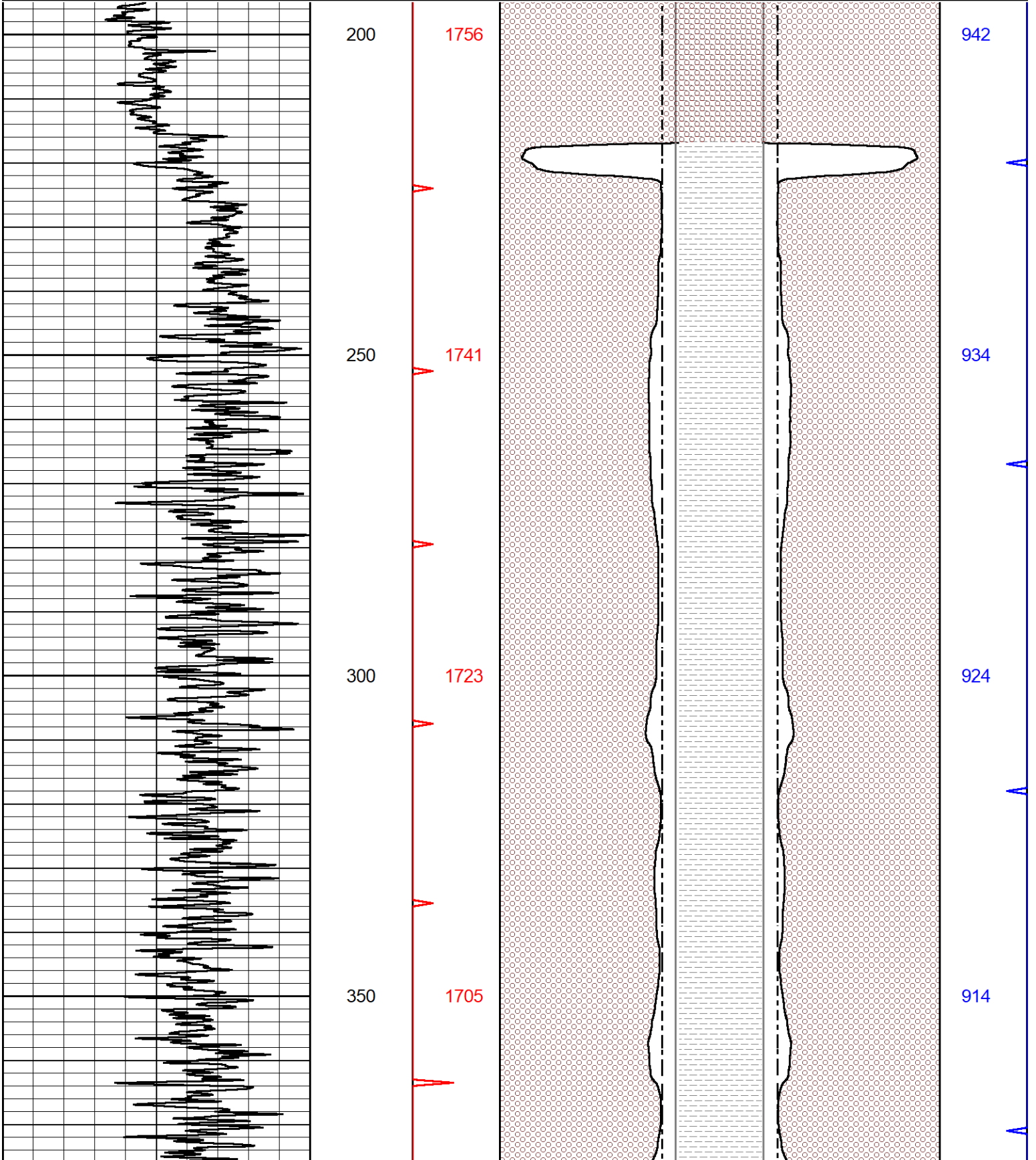
Primary Witness: Saman Sharifaie
Secondary Witness:
Secondary Witness:
Secondary Witness:

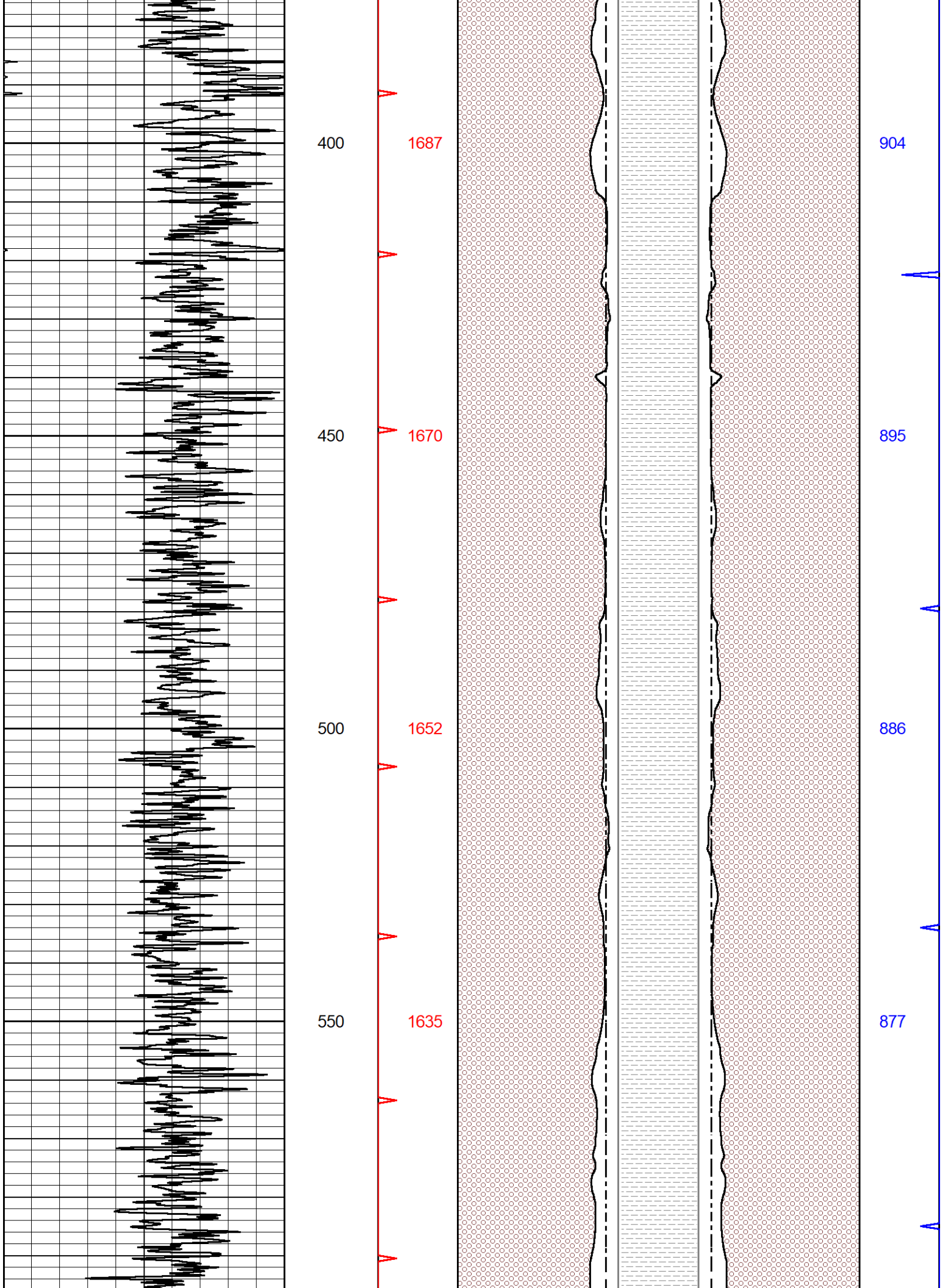
Sensor	Offset (ft)	Schematic	Description	Length (ft)	O.D. (in)	Weight (lb)
GR	40.33		GR-M&W (103)	3.00	3.50	50.00
CNLSC CNSSC	37.23 36.48		CNT-M&W (210)	5.00	3.50	100.00
LSD DCAL SSD	28.18 28.17 27.68		CDL-M&W (306-06)	8.50	4.00	250.00
ML-PSI STKBL ML (402)			ML-PSI STKBL ML (402)	7.58	4.00	65.00
MCAL MI MN	19.58 19.58 19.58		DIL-M&W (504 HT)	18.25	3.50	220.00
RLL3F RLL3	15.50 15.50					
CILD	8.33					
CILM	4.50					
SP	0.20					

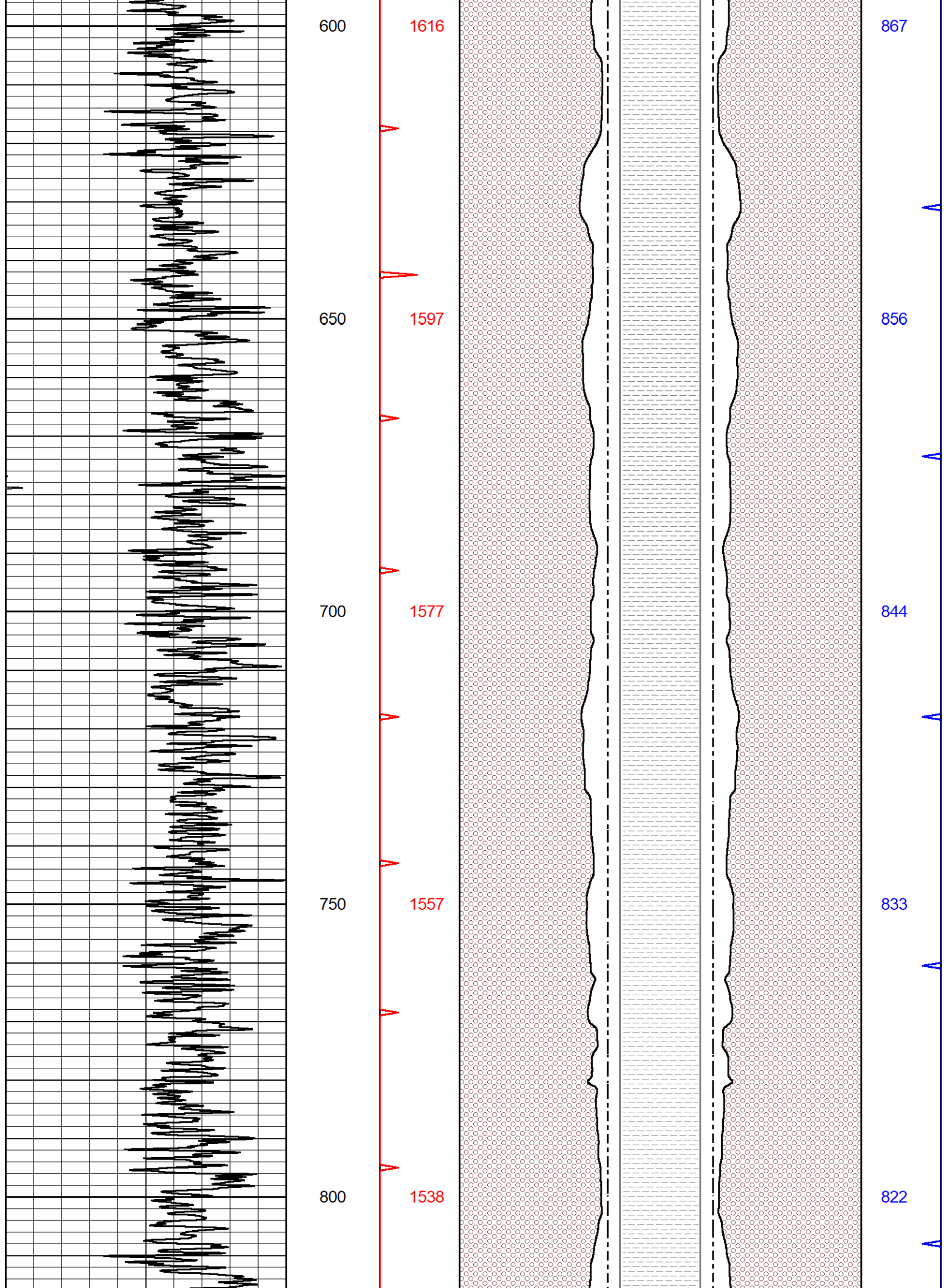
Dataset: murfin_cw unit 1-14.db: field/well/stkml/pass3.1
 Total length: 42.33 ft
 Total weight: 685.00 lb
 O.D.: 4.00 in

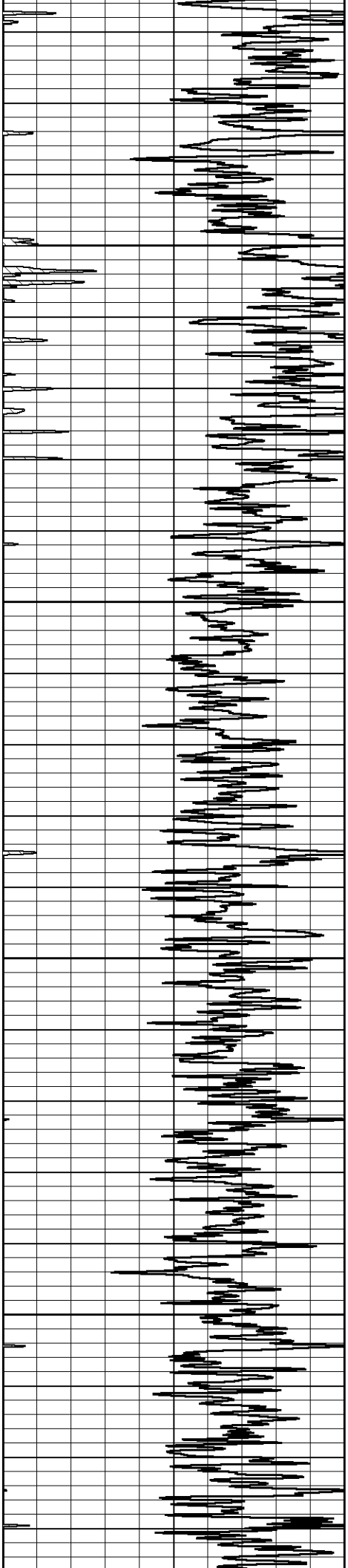
Database File murfin_cw unit 1-14.db
 Dataset Pathname stkml/pass4.1
 Presentation Format bhv5half
 Dataset Creation Tue Feb 21 18:47:12 2023
 Charted by Depth in Feet scaled 1:240

0	GAMMA RAY (GAPI)	150	16	CALIPER (in)	6	6	CALIPER (in)	16
			16	BIT SIZE	6	6	BIT SIZE	16
			0	BVTX (ft3)	15	15	AVTX (ft3)	0









850

1519

900

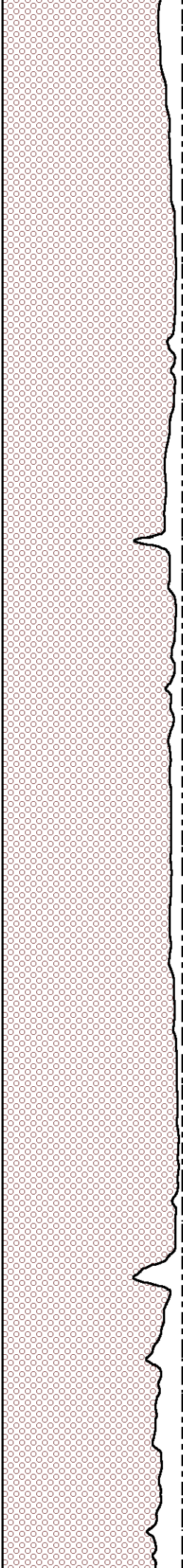
1501

950

1483

1000

1464

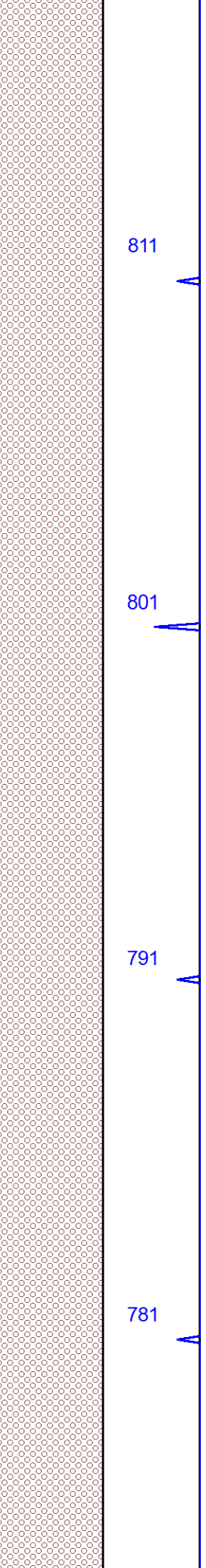
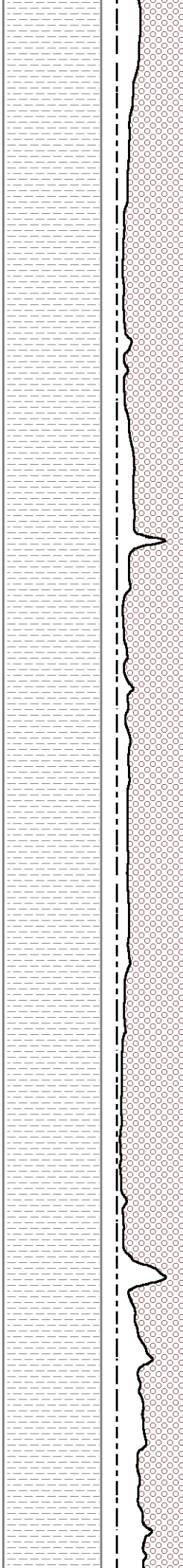


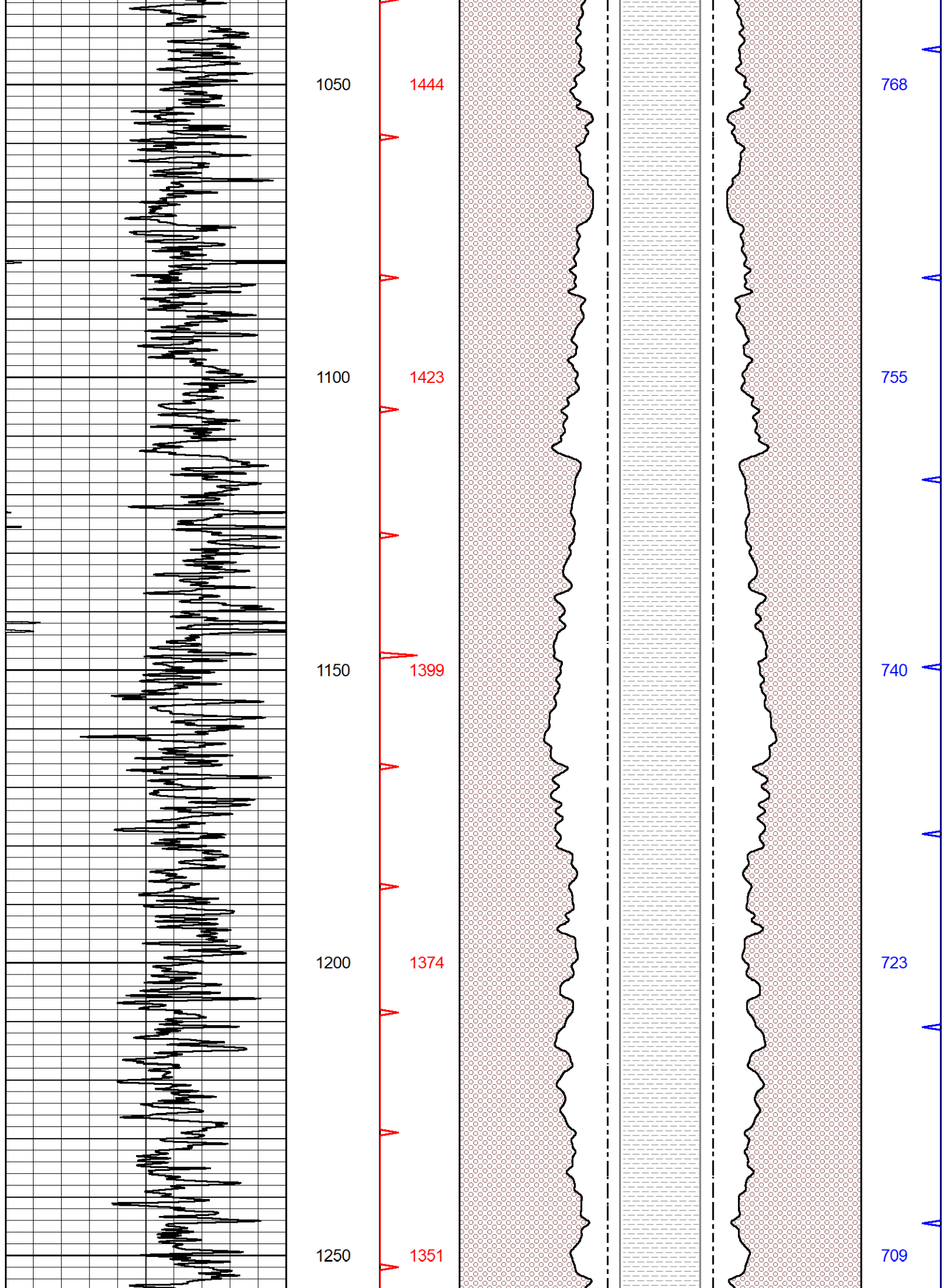
811

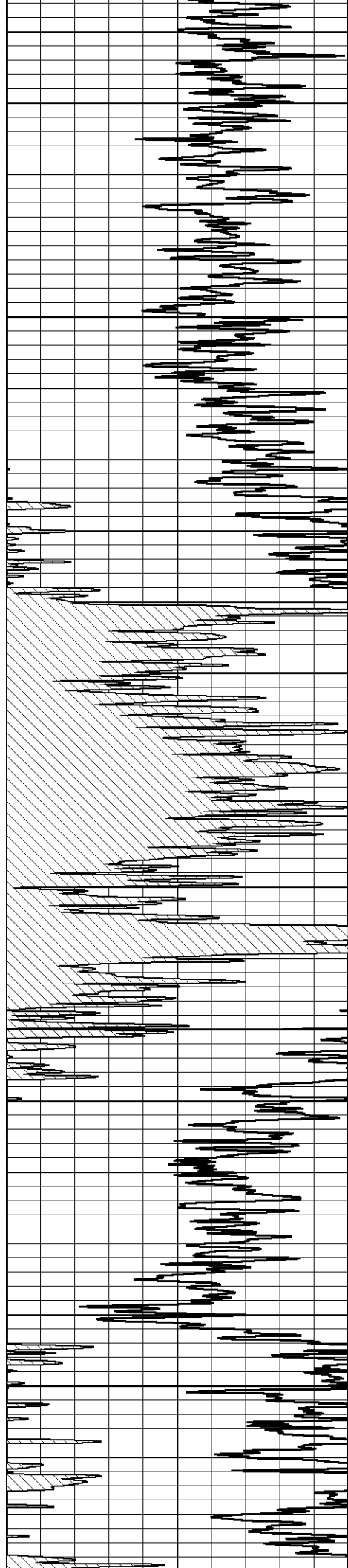
801

791

781







1300

1330

1350

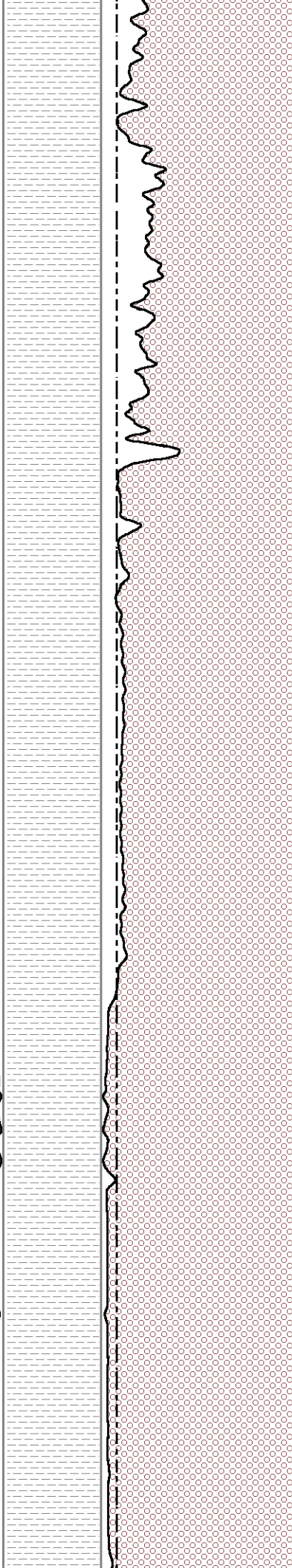
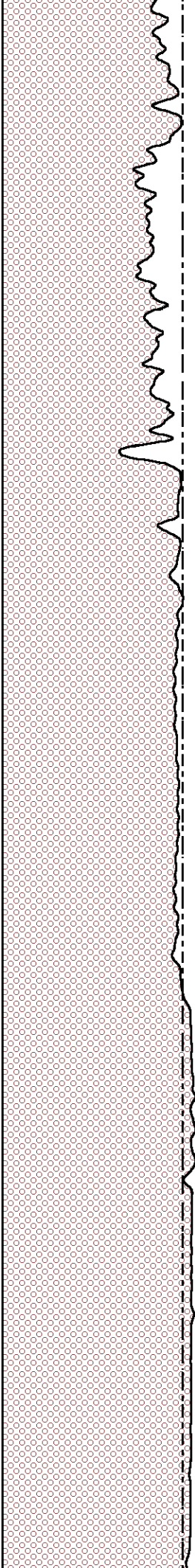
1312

1400

1294

1450

1278

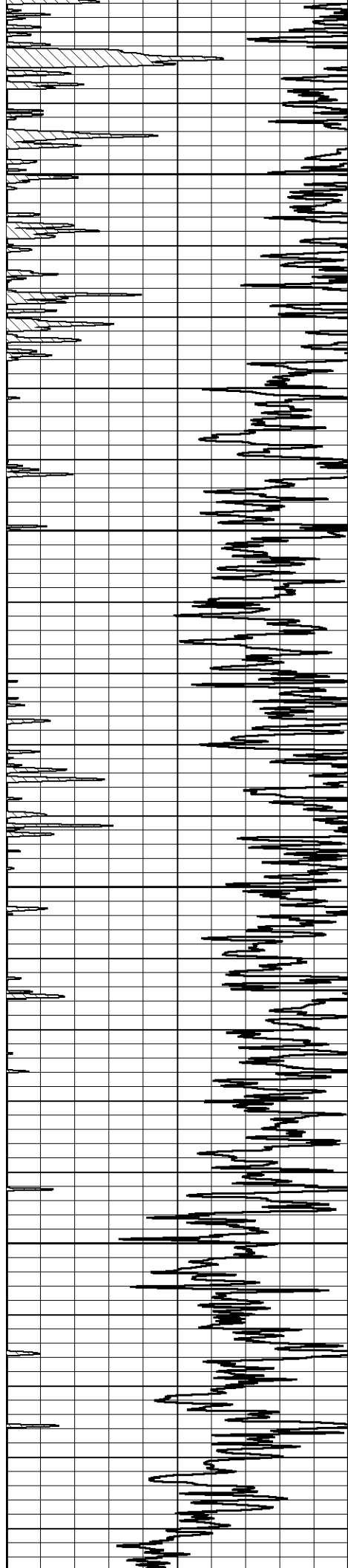


696

686

676

669



1500

1262

661

1550

1245

652

1600

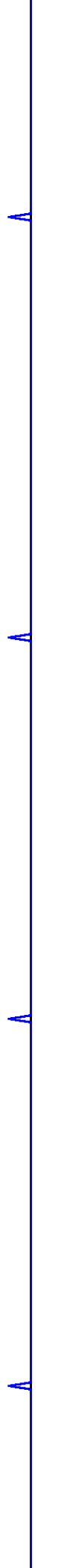
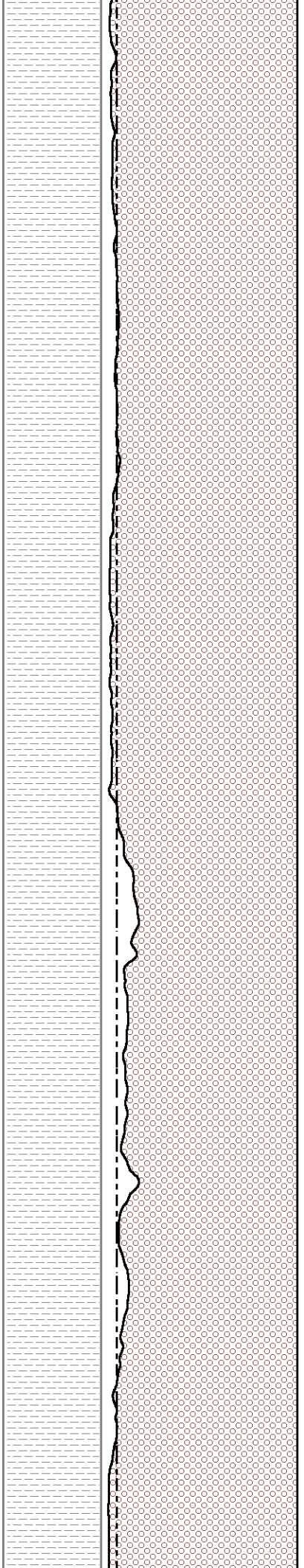
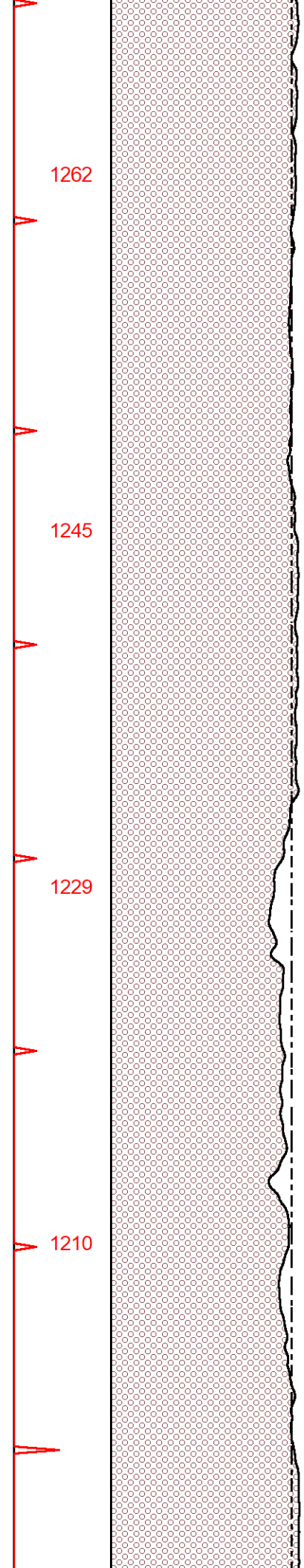
1229

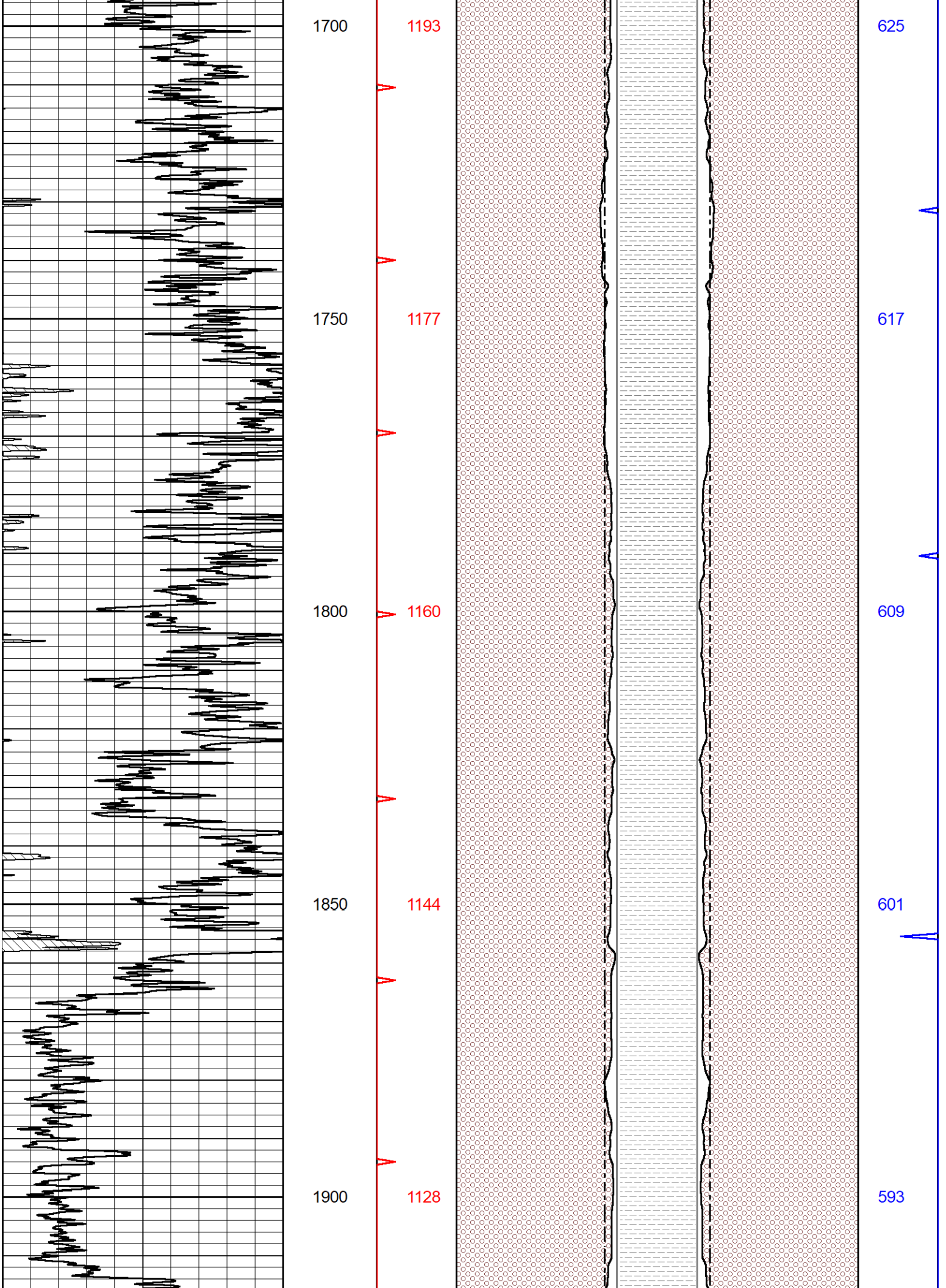
644

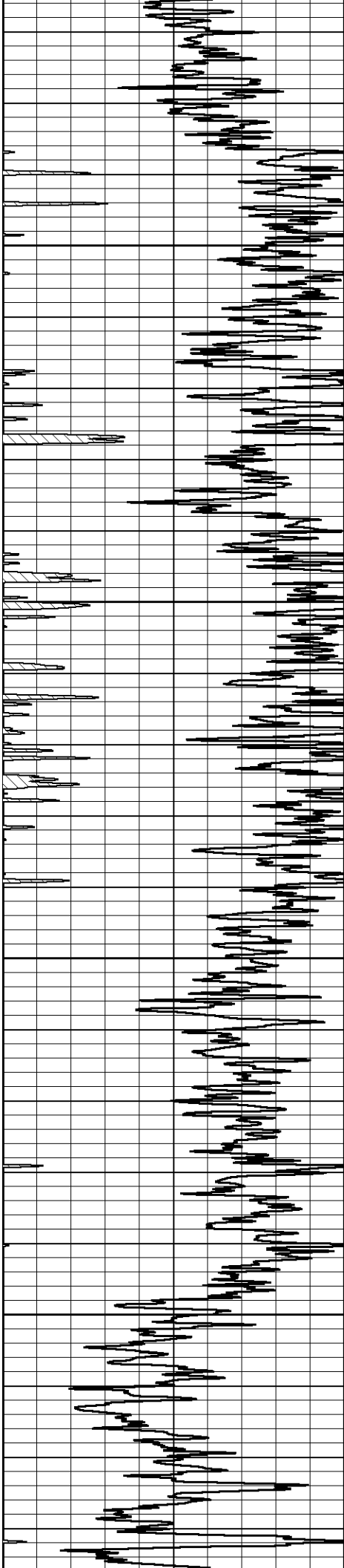
1650

1210

634







1950

1111

584

2000

1093

574

2050

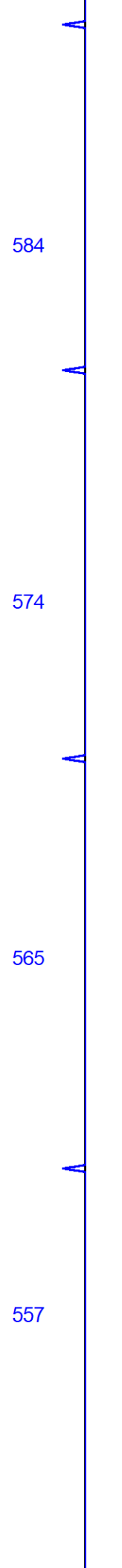
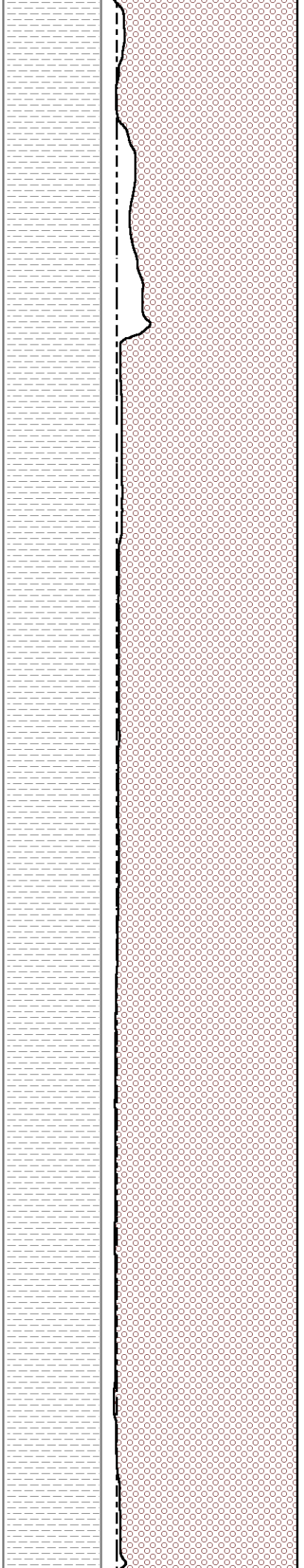
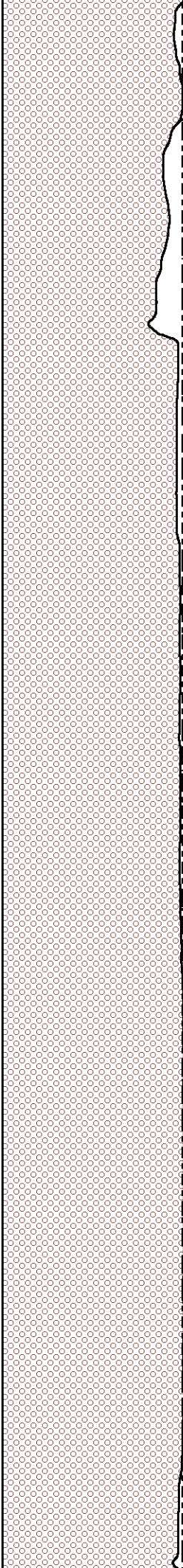
1075

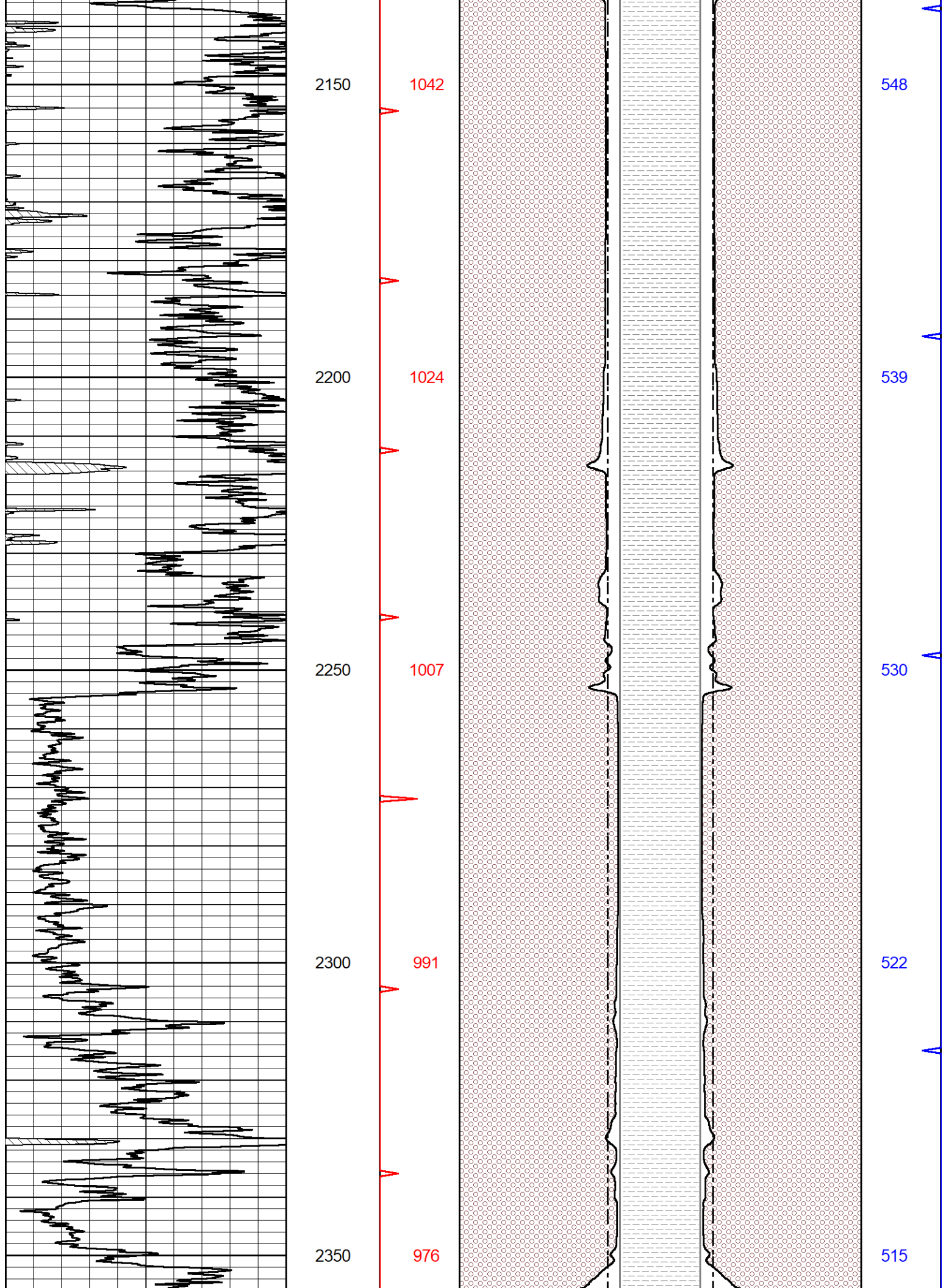
565

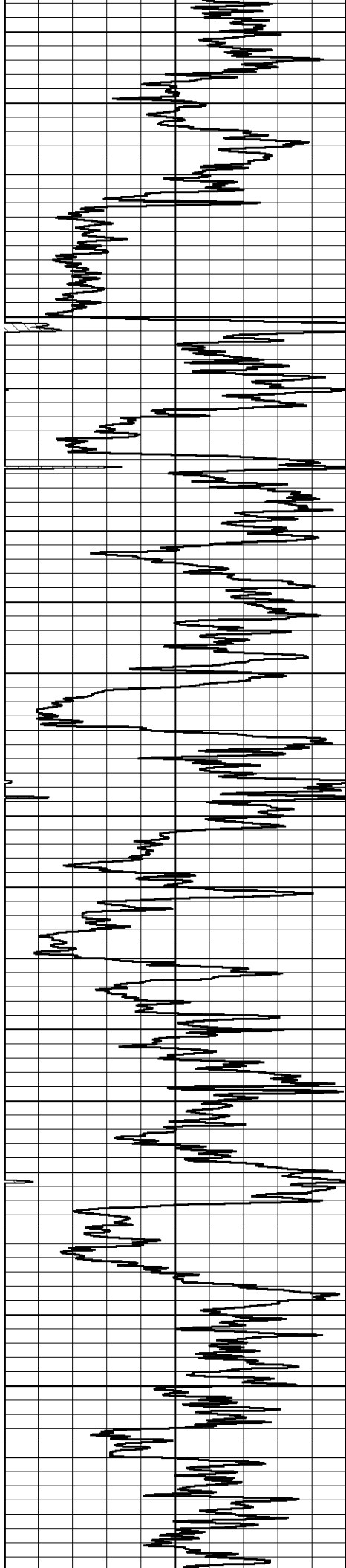
2100

1059

557







2400

2450

2500

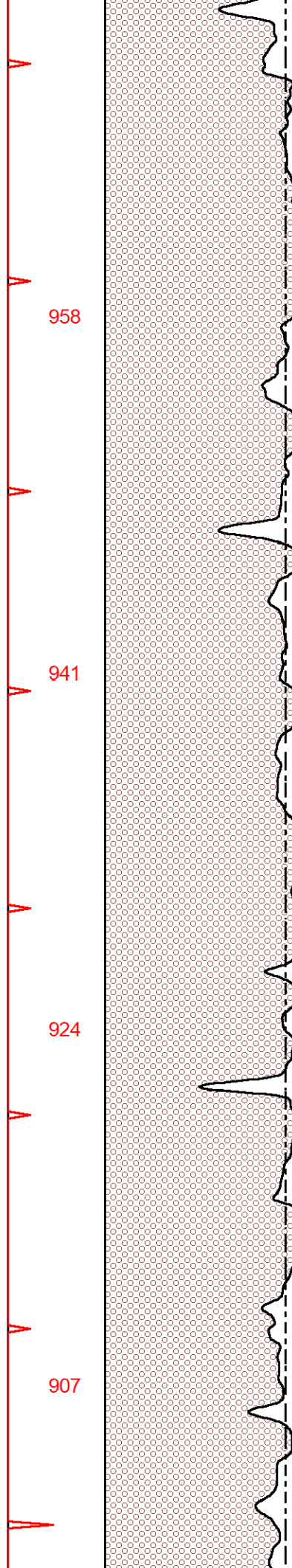
2550

958

941

924

907

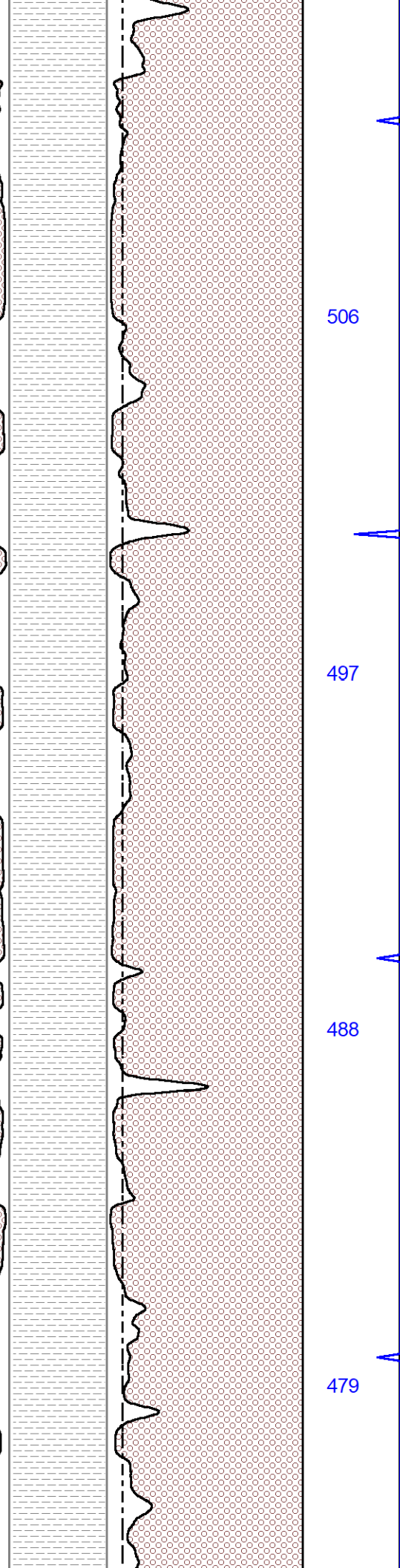


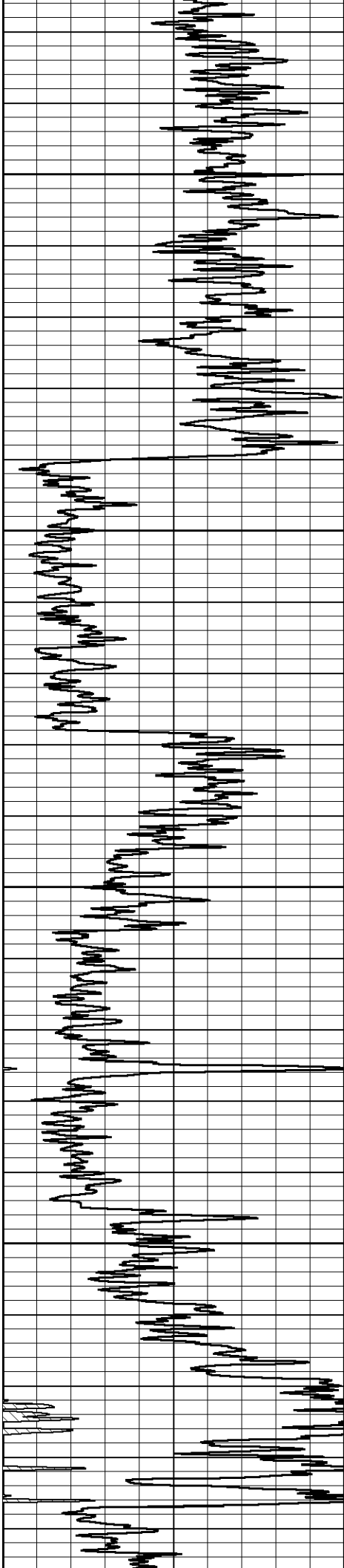
506

497

488

479





2600

888

468

2650

870

459

2700

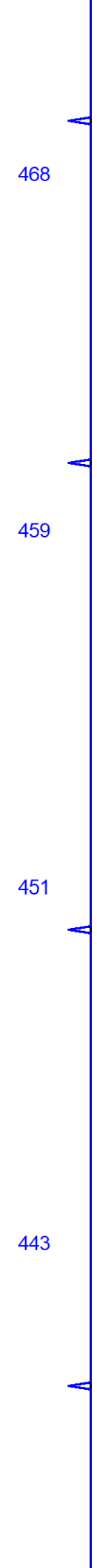
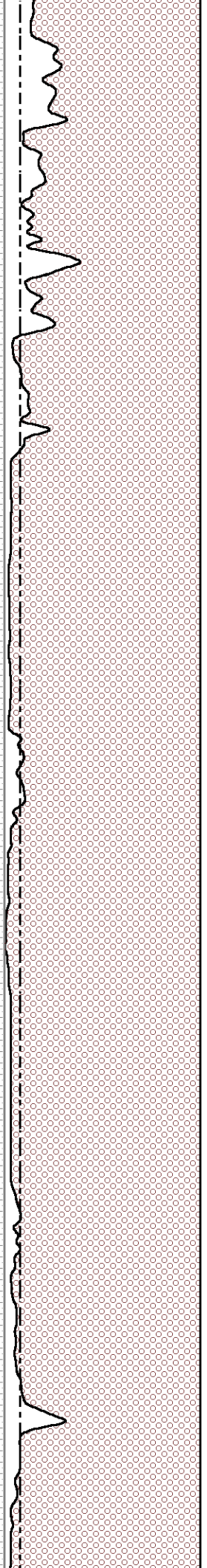
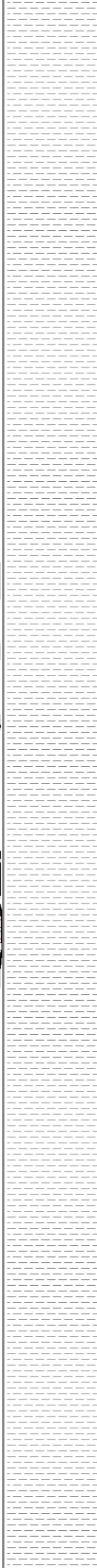
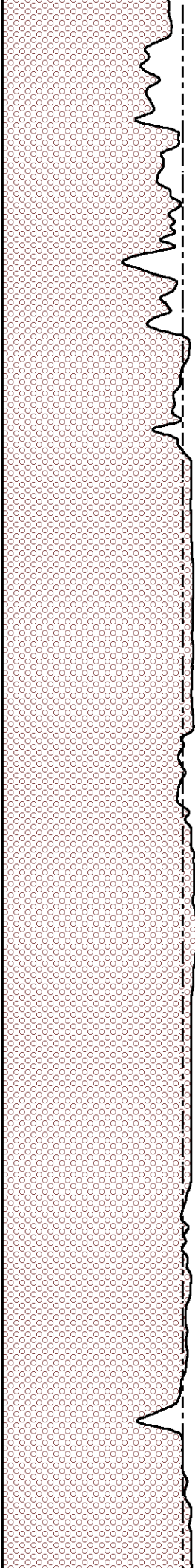
854

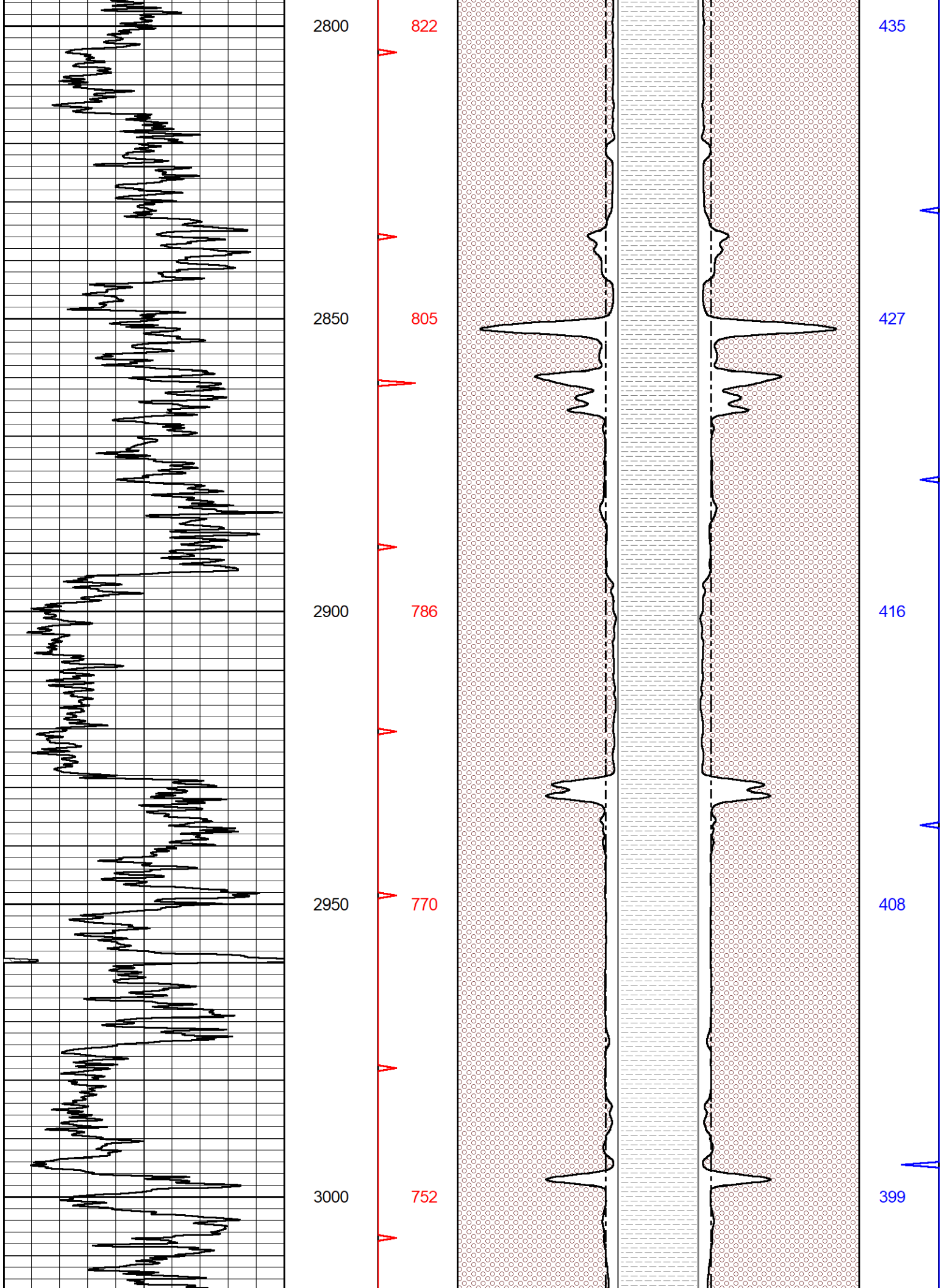
451

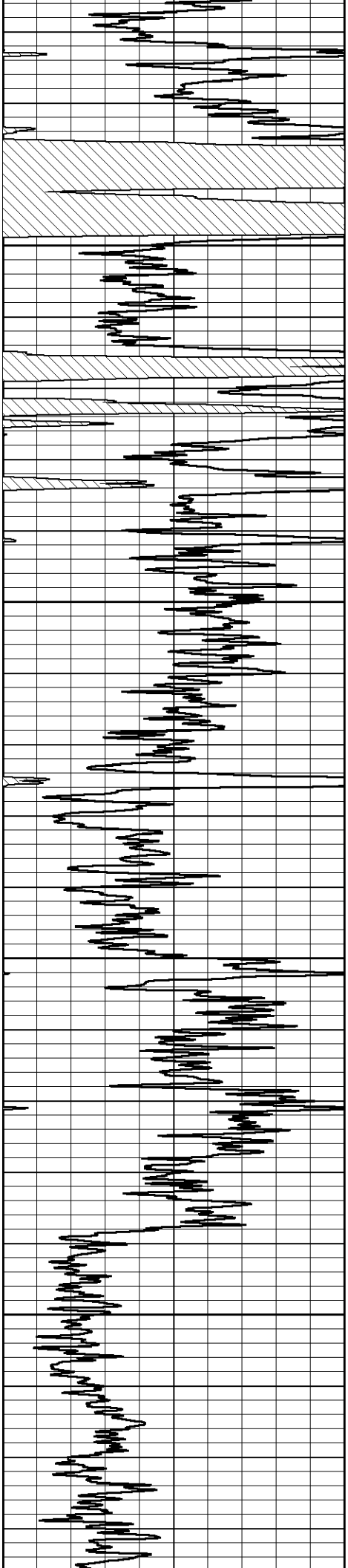
2750

838

443







3050

736

391

3100

719

382

3150

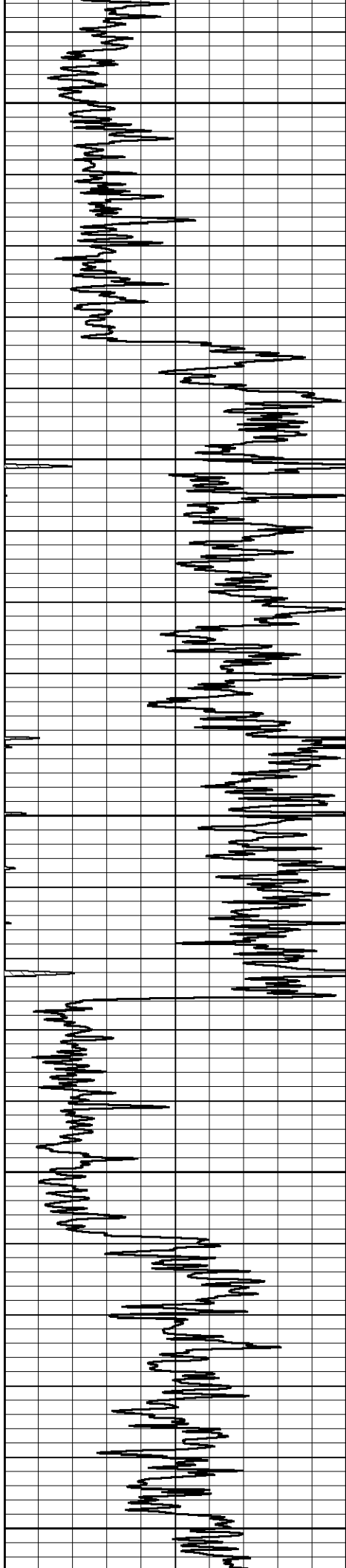
703

374

3200

686

365



3250

671

3300

655

3350

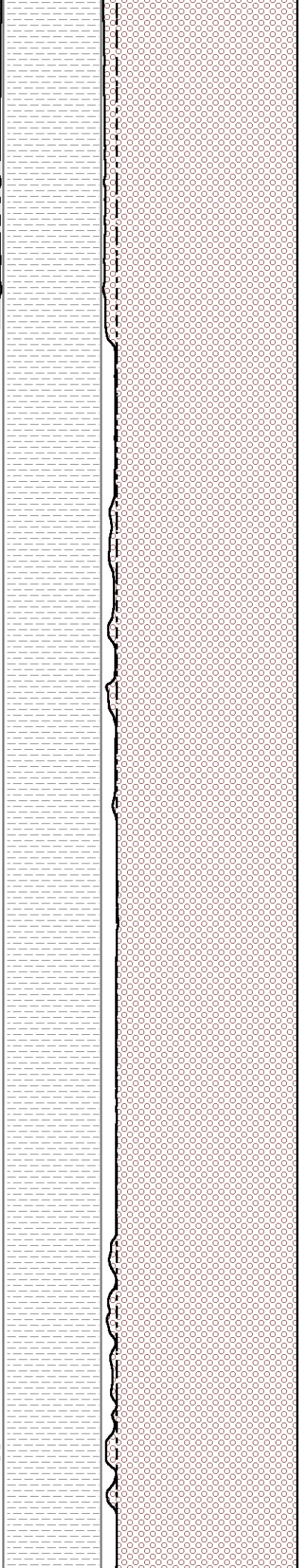
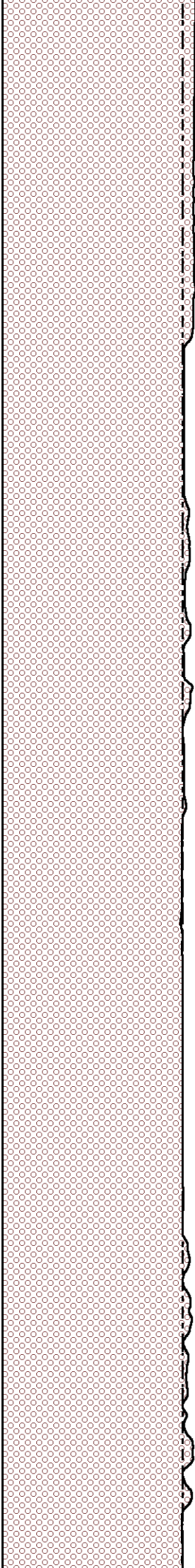
638

3400

621

3450

605



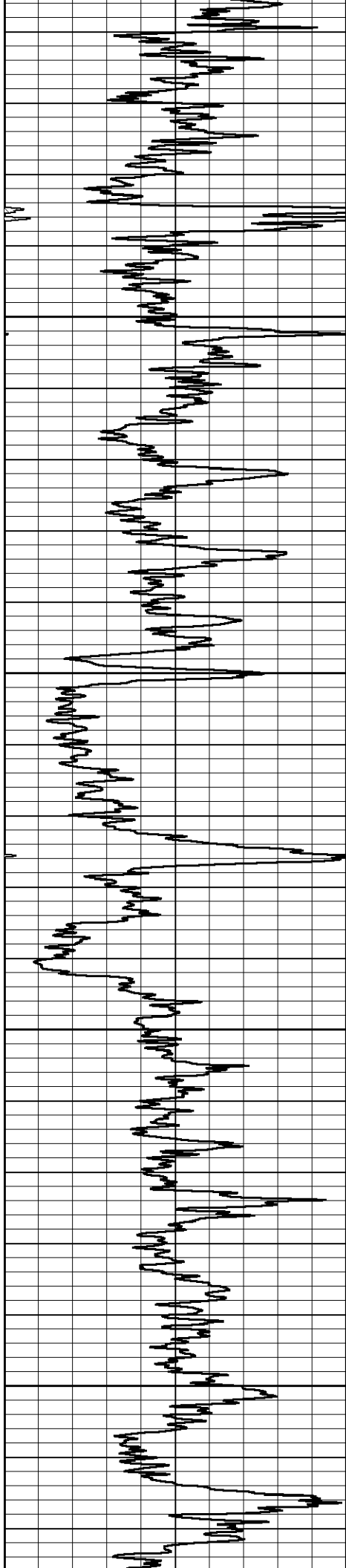
358

351

342

334

325



3500

3550

3600

3650

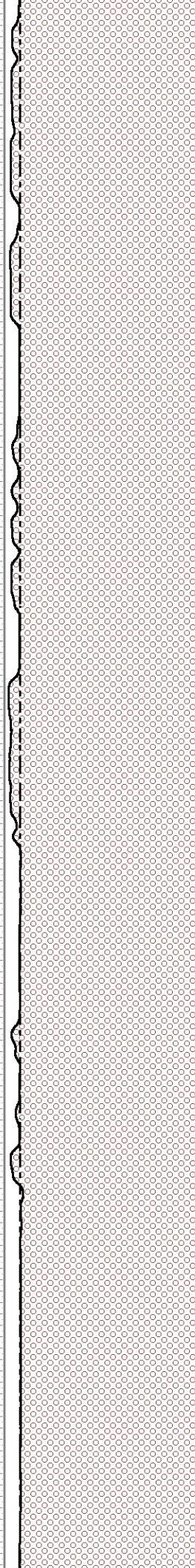
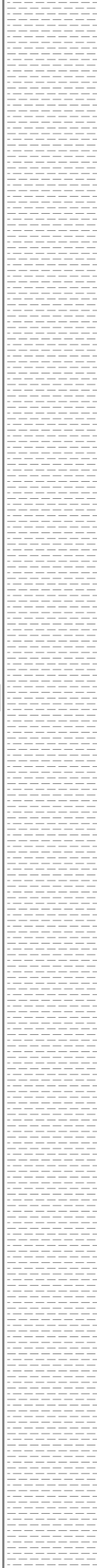
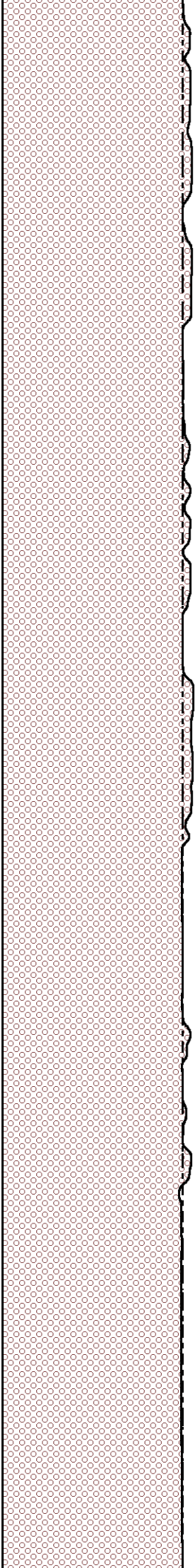


589

572

556

539



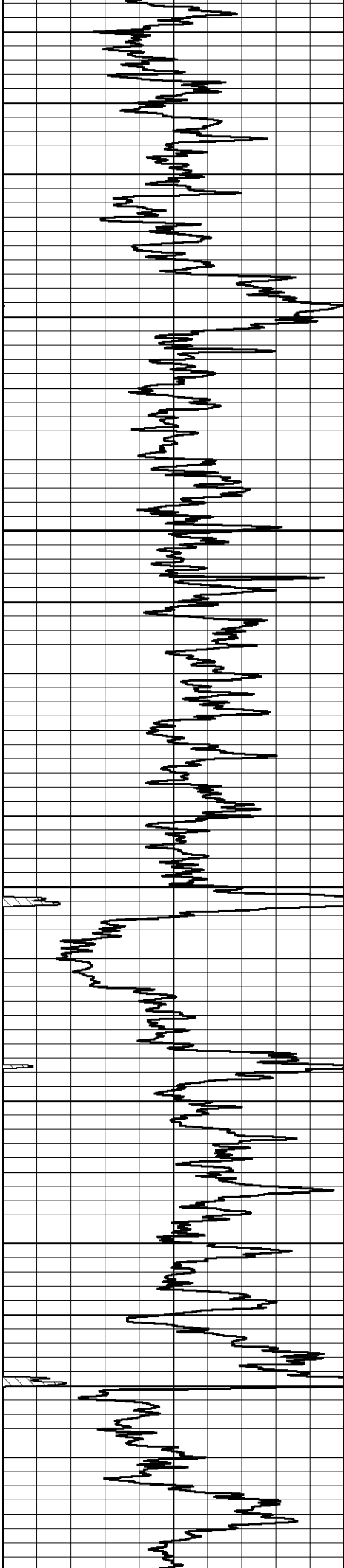
318

309

301

293





3700

522

284

3750

505

275

3800

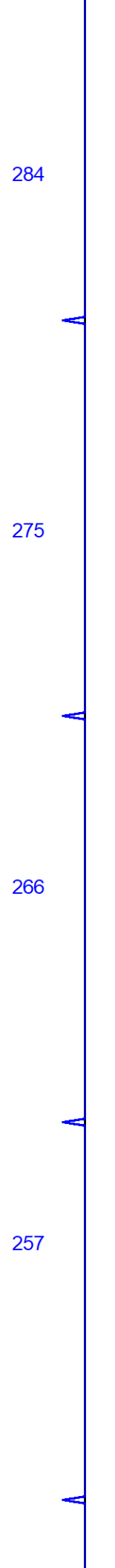
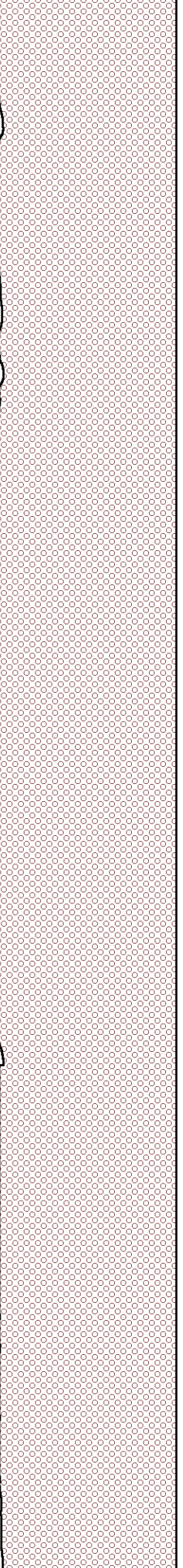
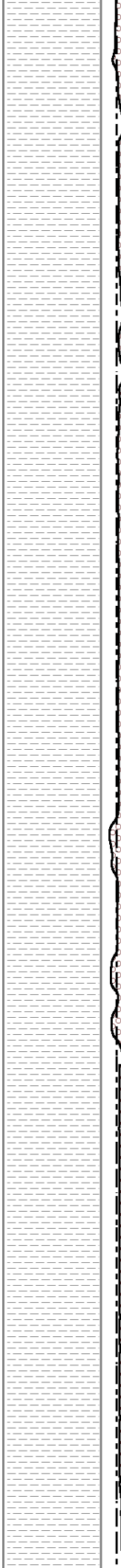
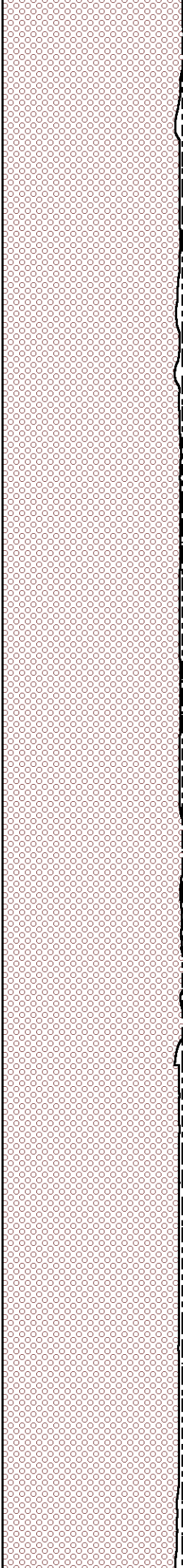
488

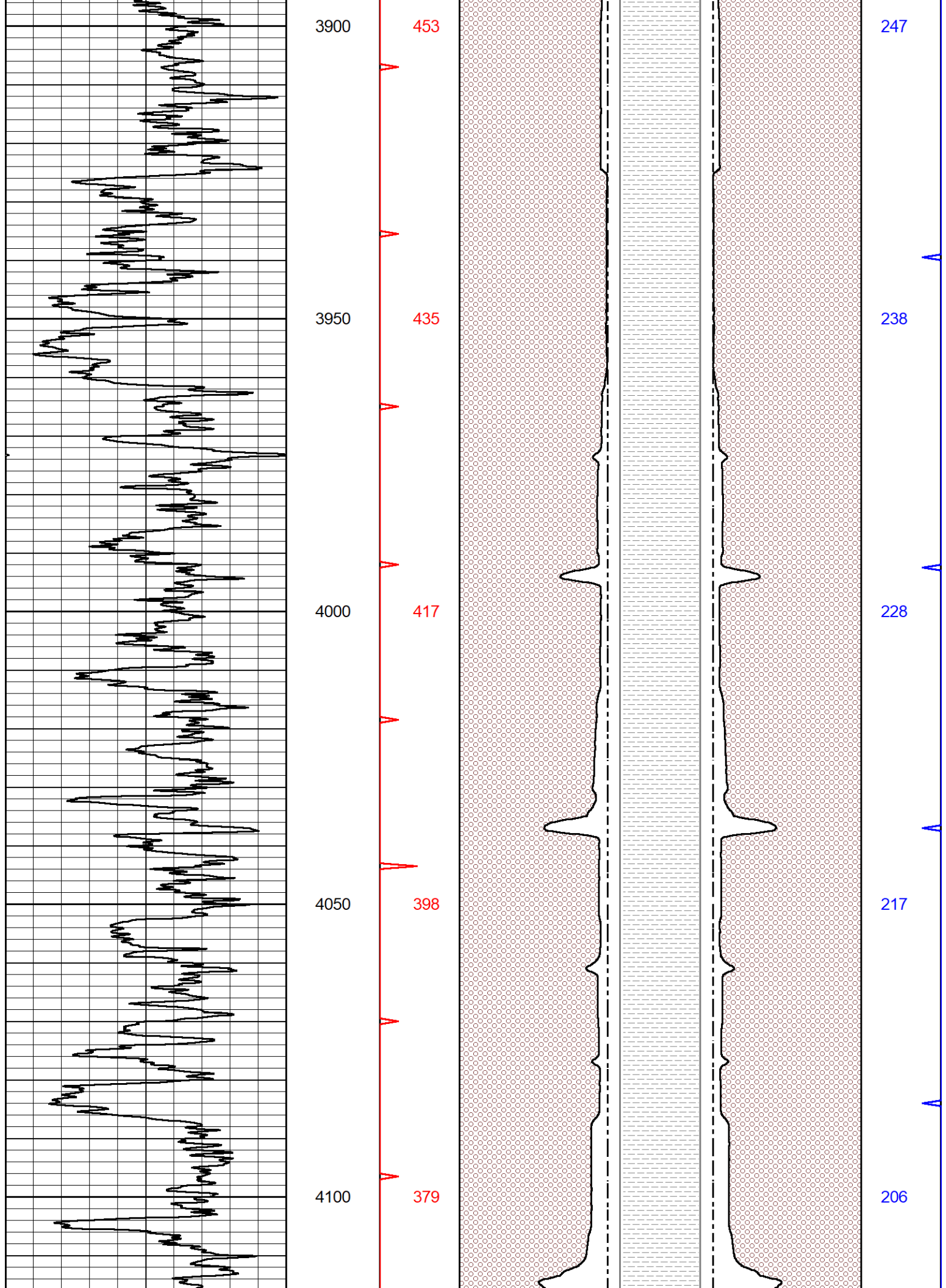
266

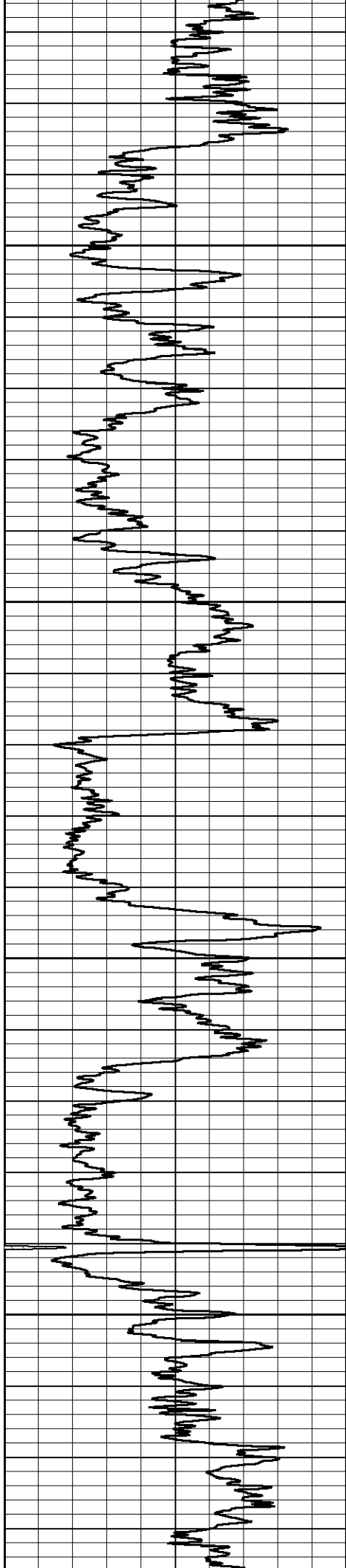
3850

470

257







4150

4200

4250

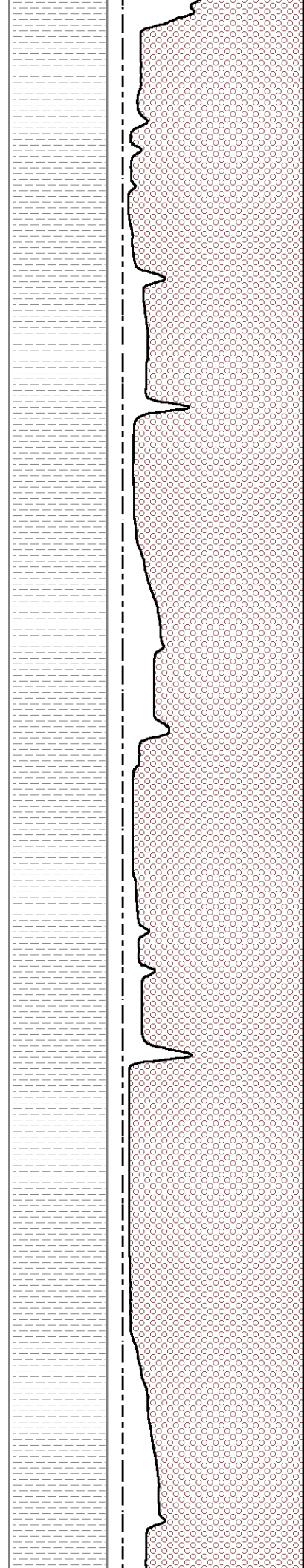
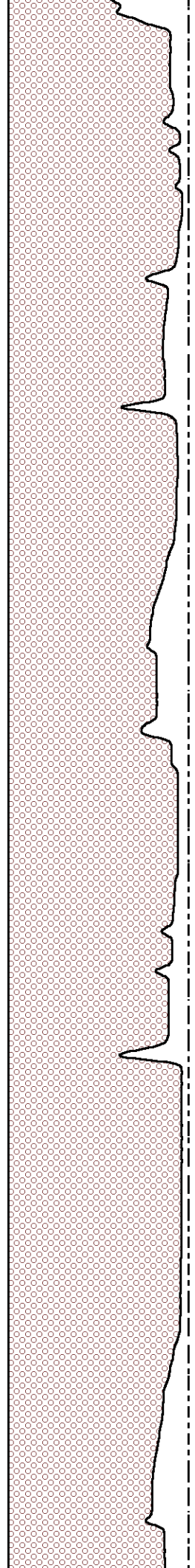
4300

358

338

318

300



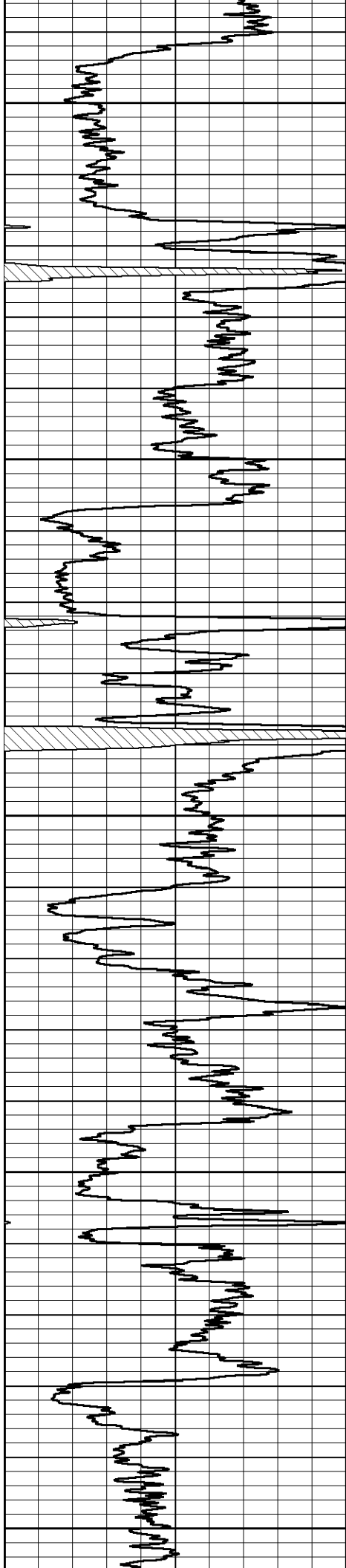
194

182

171

160





4350

279

4400

260

4450

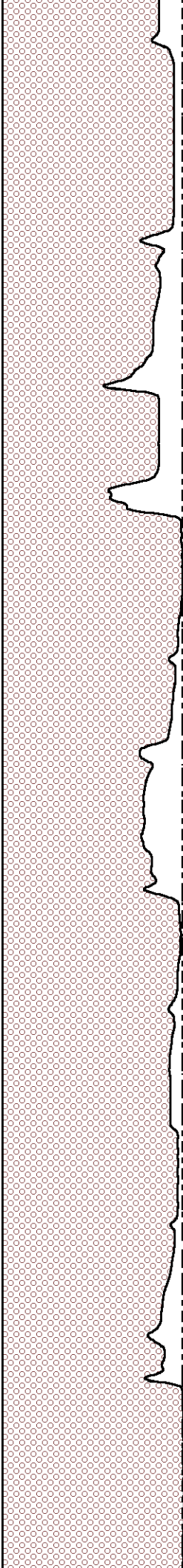
240

4500

221

4550

203



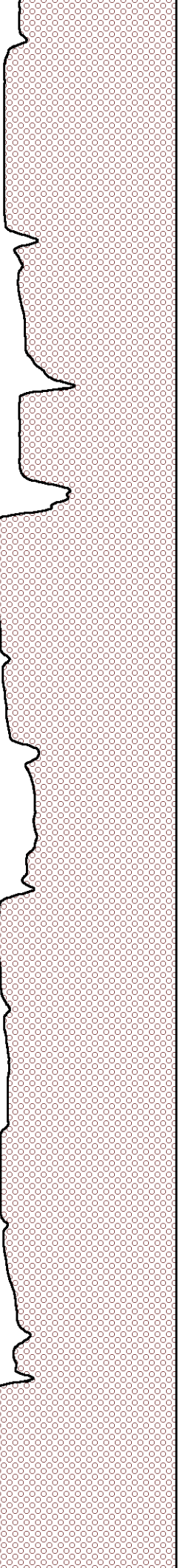
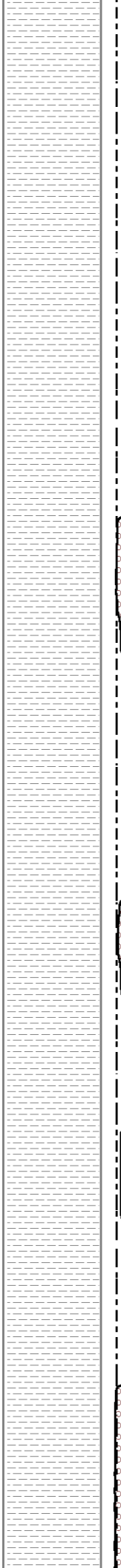
148

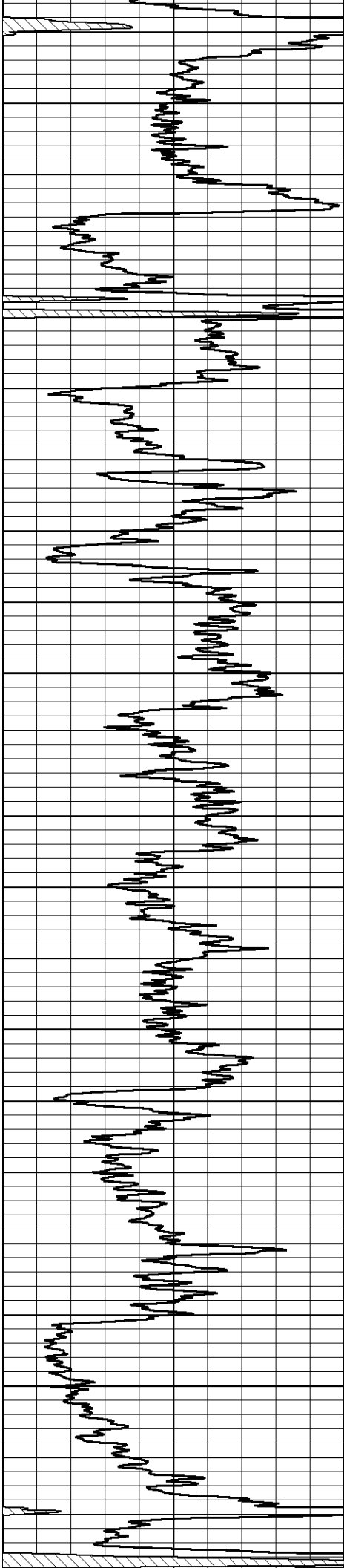
137

126

115

105





4600

4650

4700

4750

185

166

148

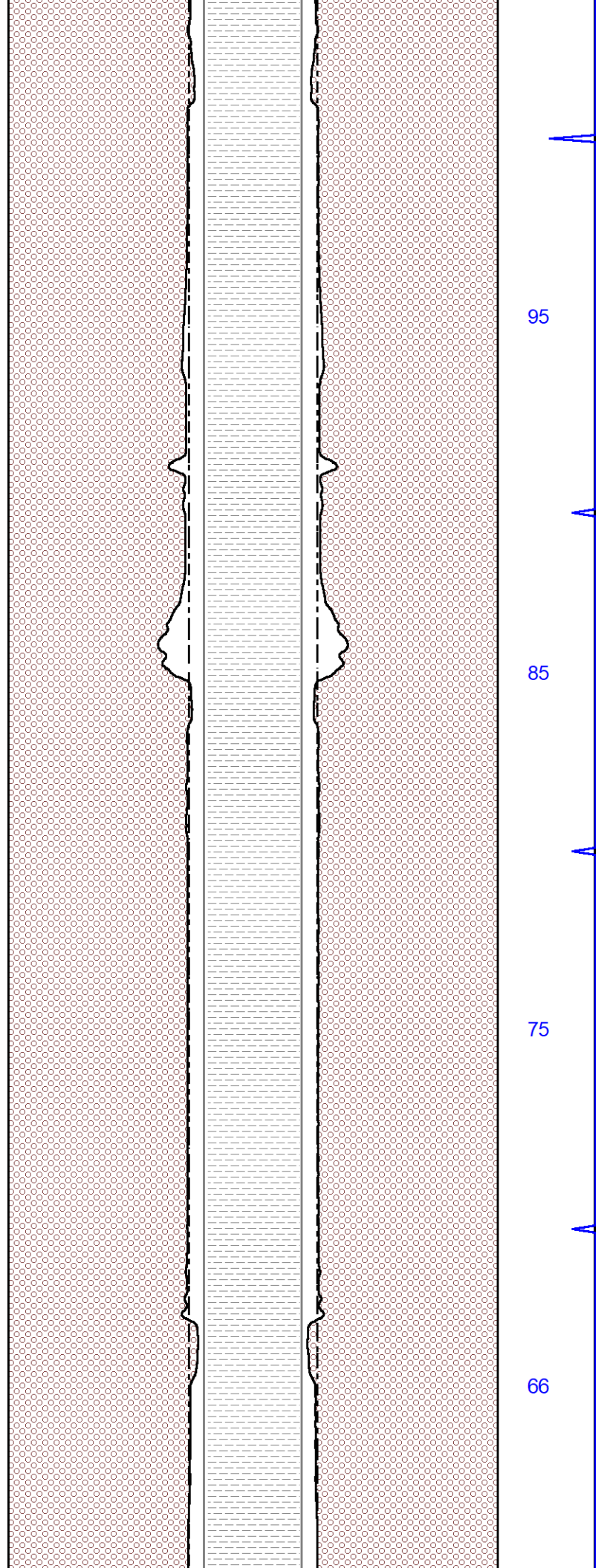
131

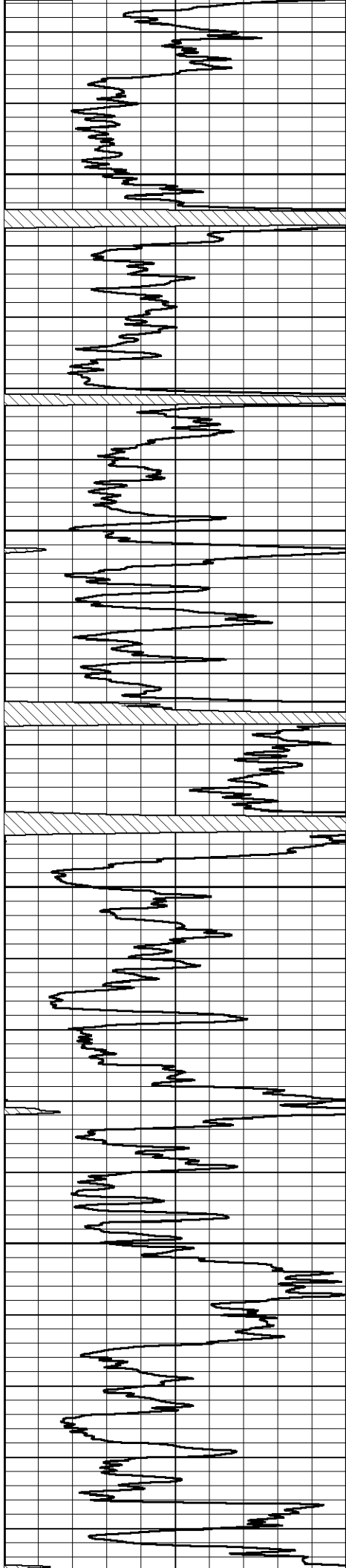
95

85

75

66





4800

114

4850

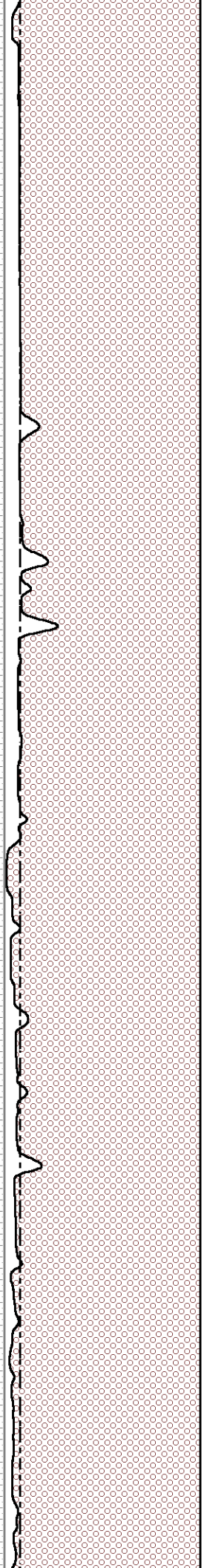
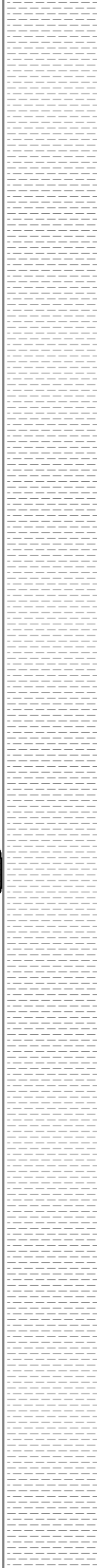
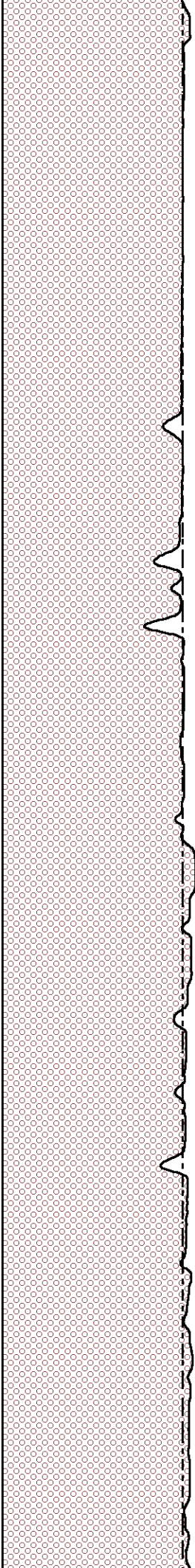
97

4900

79

4950

63

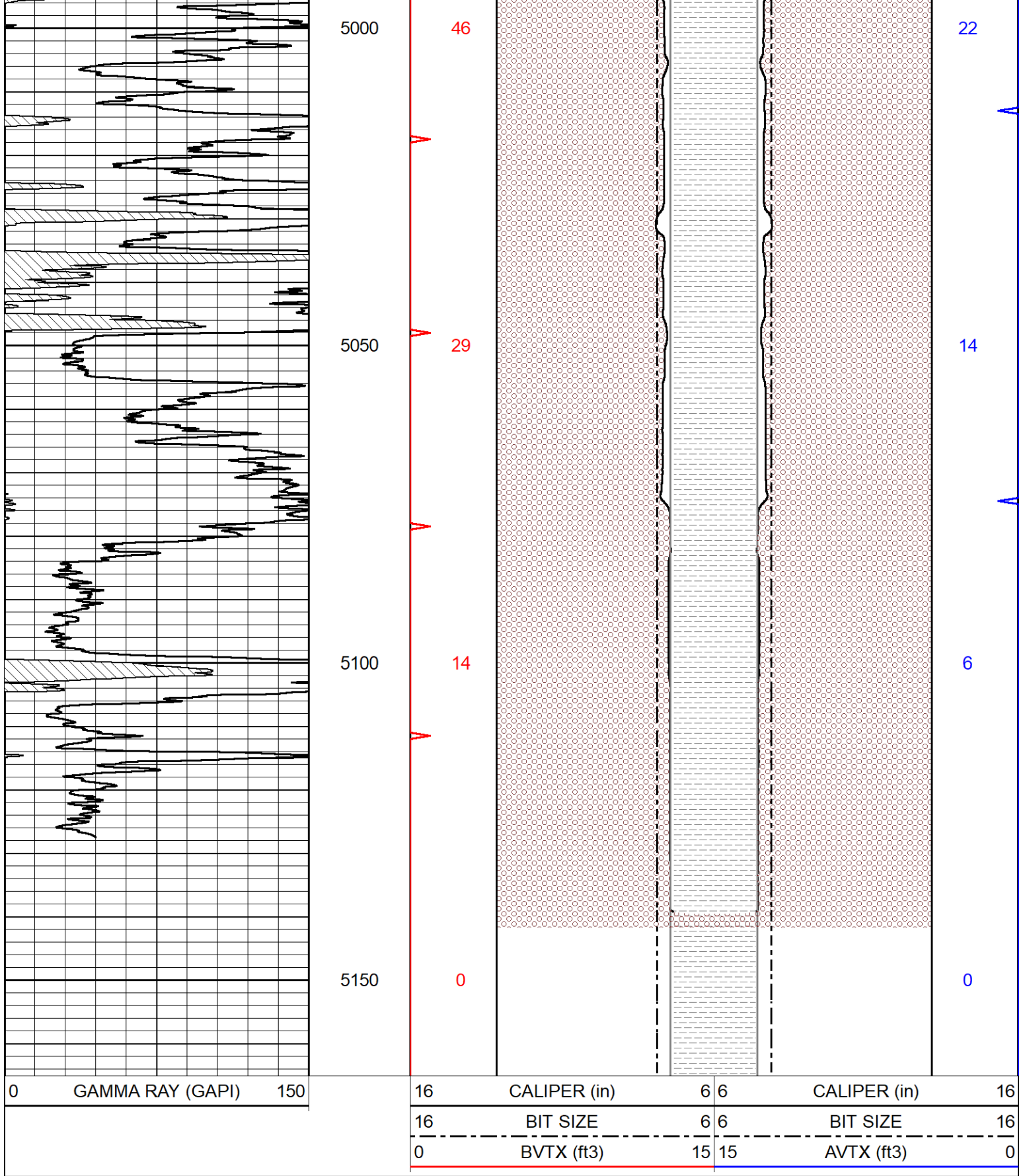


57

48

39

31



Calibration Report

Database File murfin_cw unit 1-14.db
 Dataset Pathname stkml/pass3.1
 Dataset Creation Tue Feb 21 16:22:14 2023

Dual Induction Calibration Report

Serial-Model: 504 HT-M&W
 Surface Cal Performed: Wed, Jan 25 21:25:46 2023

Loop:	Readings		References			Results	
	Air	Loop	Air	Loop		m	b
Deep	178.615	710.235	0.000	255.800	mmho/m	0.580	-21.000
Medium	161.982	1441.110	0.000	255.800	mmho/m	0.400	-42.000

Microlog Calibration Report

Serial-Model: 402-PSI STKBL ML
 Performed: Wed Jan 25 21:26:04 2023

	Readings		References			Results	
	Zero	Cal	Zero	Cal		m	b
Normal	0.0037	0.0043	0.0000	10.0000	Ohm-m	24000.0000	-0.9000
Inverse	0.1208	0.0013	0.0000	10.0000	Ohm-m	21000.0000	0.0000
Caliper	1.0046	1.1419	5.5000	20.0000	in	50.0000	-44.4250

Compensated Density Calibration Report

Serial-Model: 306-06-M&W
 Source #: 21170B
 Master Calibration Performed: Tue Dec 14 14:05:52 2021

Master Calibration

	Density		Far Detector	Near Detector	
Magnesium	1.755	g/cc	5193.26	4968.12	cps
Aluminum	2.650	g/cc	962.25	3144.87	cps
Spine Angle = 74.82		Density/Spine Ratio = 0.512			
	Size		Reading		
Small Ring	4.00	in	1.01		
Large Ring	14.00	in	1.15		

Compensated Neutron Calibration Report

Serial-Model: 210-M&W
 Source #: N-1238
 Master Calibration Performed: Fri Dec 3 09:16:24 2021

Master Calibration

Detector	Readings	Target	Normalization
Short Space	6240.00 cps	1000.00 cps	1.6025
Long Space	460.00 cps	1000.00 cps	1.9500

Gamma Ray Calibration Report

Serial Number: 103
 Tool Model: M&W
 Performed: Wed Jan 25 21:25:33 2023

Calibrator Value: 500.0 GAPI

Background Reading:	28.0	cps
Calibrator Reading:	986.0	cps
Sensitivity:	0.5700	GAPI/cps



Company	Murfin Drilling Company, Inc.
Well	C-W Unit #1-14
Field	
County	Cheyenne
State	Kansas