

SONIC
LOG



Company DARRAH OIL COMPANY, LLC.

Well CHURCH #1-14

Field UNNAMED

County BUTLER State KANSAS

Location: API #: 15-015-24175-0000

356' FNL & 1500' FEL

SEC 14 TWP 23S RGE 5E

Permanent Datum GROUND LEVEL Elevation 1509
Log Measured From KELLY BUSHING 8' A.G.L
Drilling Measured From KELLY BUSHING

Other Services
CDL/CNL/PE
DIL/MEL

Elevation

K.B. 1517
D.F. 1515
G.L. 1509

Date	5/20/23
Run Number	TWO
Depth Driller	2282
Depth Logger	2282
Bottom Logged Interval	2274
Top Log Interval	200
Casing Driller	8 5/8" @ 221
Casing Logger	221
Bit Size	7 7/8
Type Fluid in Hole	CHEMICAL MUD
Density / Viscosity	9.5/40
pH / Fluid Loss	10.0/9.6
Source of Sample	FLOWLINE
Rm @ Meas. Temp	1.80 @ 64F
Rmf @ Meas. Temp	1.35 @ 64F
Rmc @ Meas. Temp	2.16 @ 64F
Source of Rmf / Rmc	MEASUREMENT
Rm @ BHT	1.14 @ 101F
Time Circulation Stopped	4 HOURS
Time Logger on Bottom	6:30 A.M.
Maximum Recorded Temperature	101F
Equipment Number	8916
Location	HAYS, KANSAS
Recorded By	COLE ROBBEN
Witnessed By	ROGER MARTIN

<<< Fold Here >>>

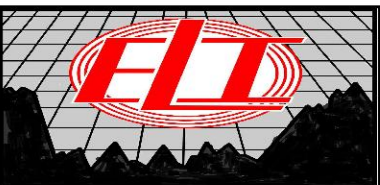
All interpretations are opinions based on inferences from electrical or other measurements and we cannot and do not guarantee the accuracy or correctness of any interpretation, and we shall not, except in the case of gross or willful negligence on our part, be liable or responsible for any loss, costs, damages, or expenses incurred or sustained by anyone resulting from any interpretation made by any of our officers, agents or employees. These interpretations are also subject to our general terms and conditions set out in our current Price Schedule.

Comments

THANK YOU FOR USING ELI WIRELINE SERVICES, HAYS, KS. (785) 628-6395

DIRECTIONS:

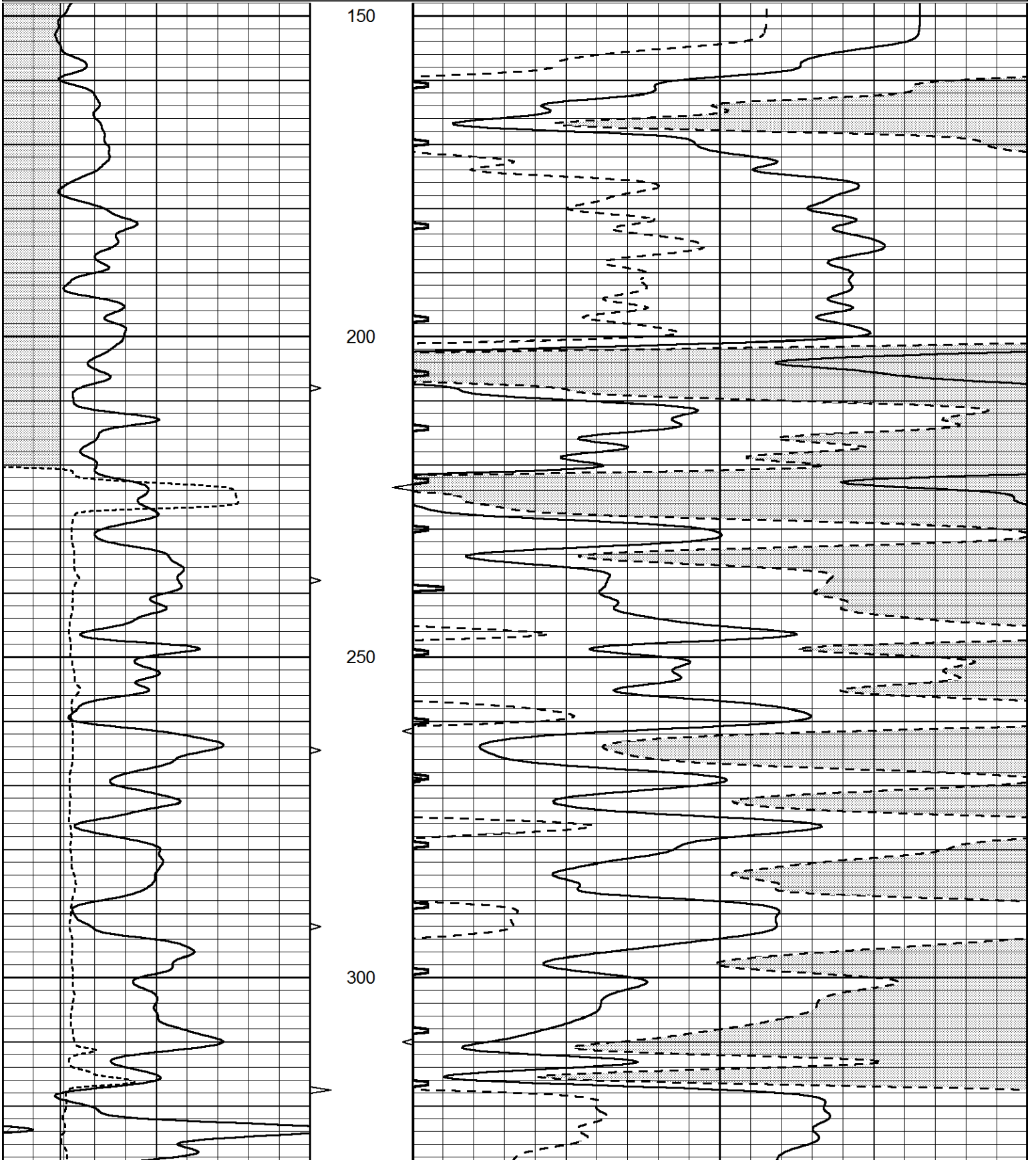
FROM MARION, KANSAS GO SOUTH ON US-77 FOR 14 MILES TO NW 160TH STREET,
EAST ON NW 160TH STREET FOR 3/4 MILE, SOUTH INTO

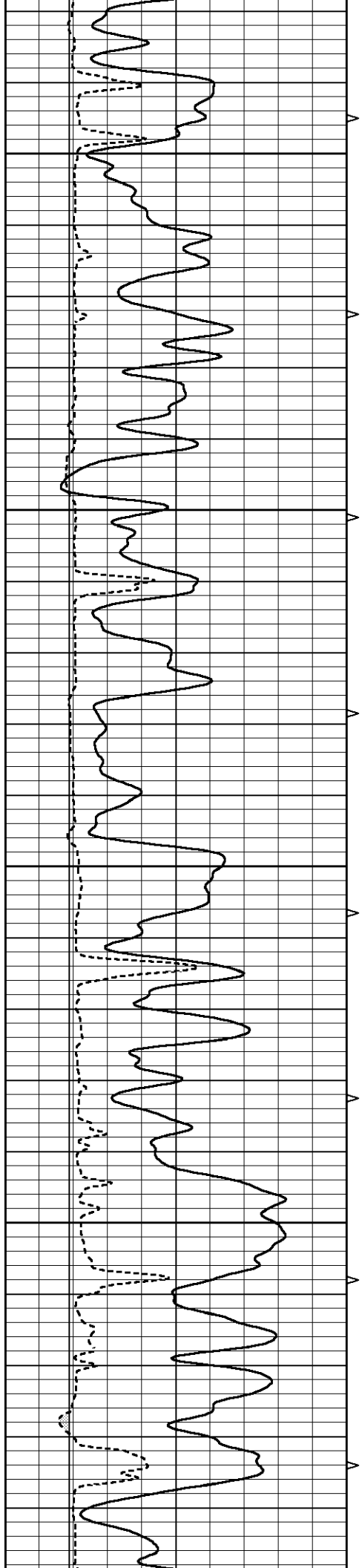


MAIN SECTION

Database File 7587pe.db
 Dataset Pathname pass11.2
 Presentation Format _slt
 Dataset Creation Sat May 20 10:35:48 2023
 Charted by Depth in Feet scaled 1:240

0	GAMMA RAY (GAPI)	150	ABHV	140	DELTA TIME (usec/ft)	40
6	CALIPER (in)	16	10 (ft3) 0	30	SONIC POROSITY (pu)	-10
-----			TBHV	0	ITT (msec)	20
			0 (ft3) 10			



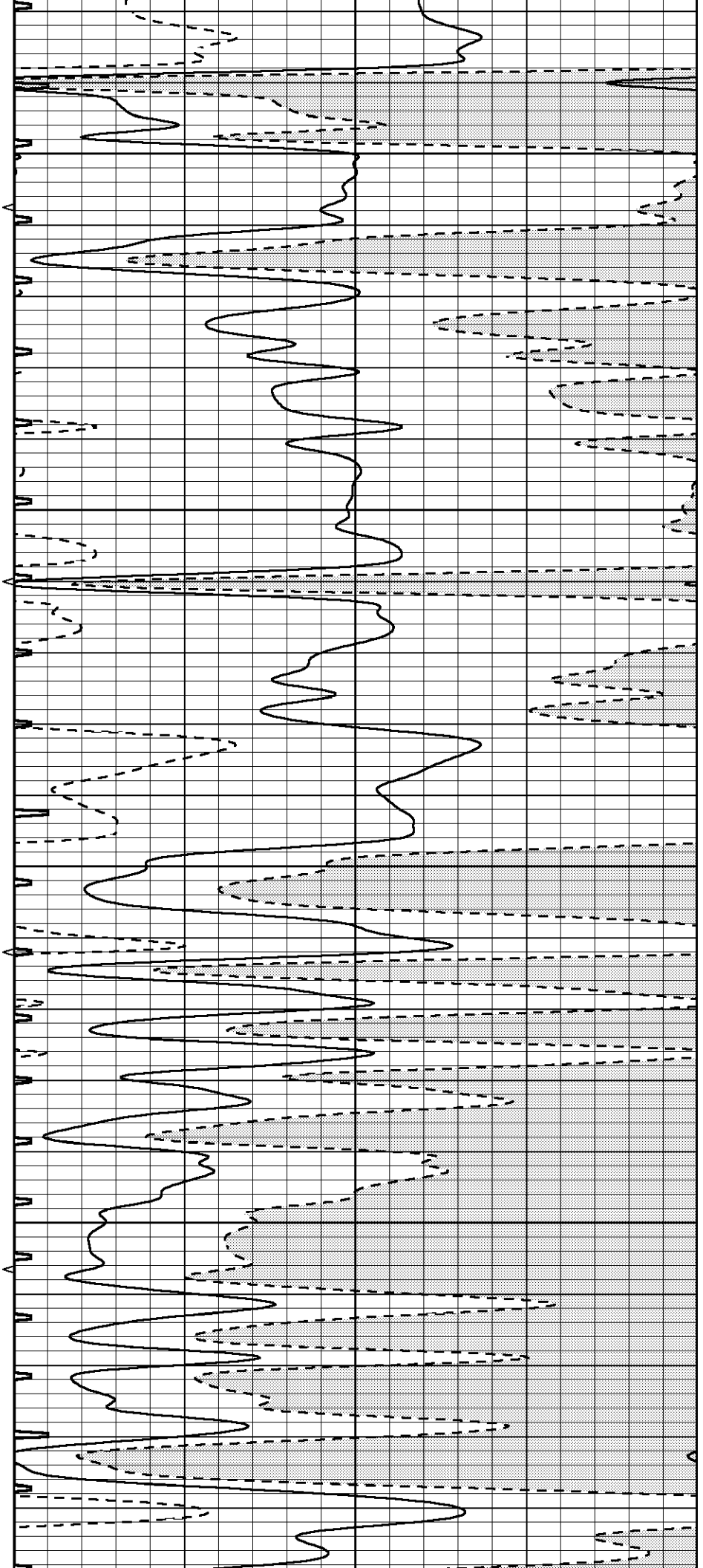


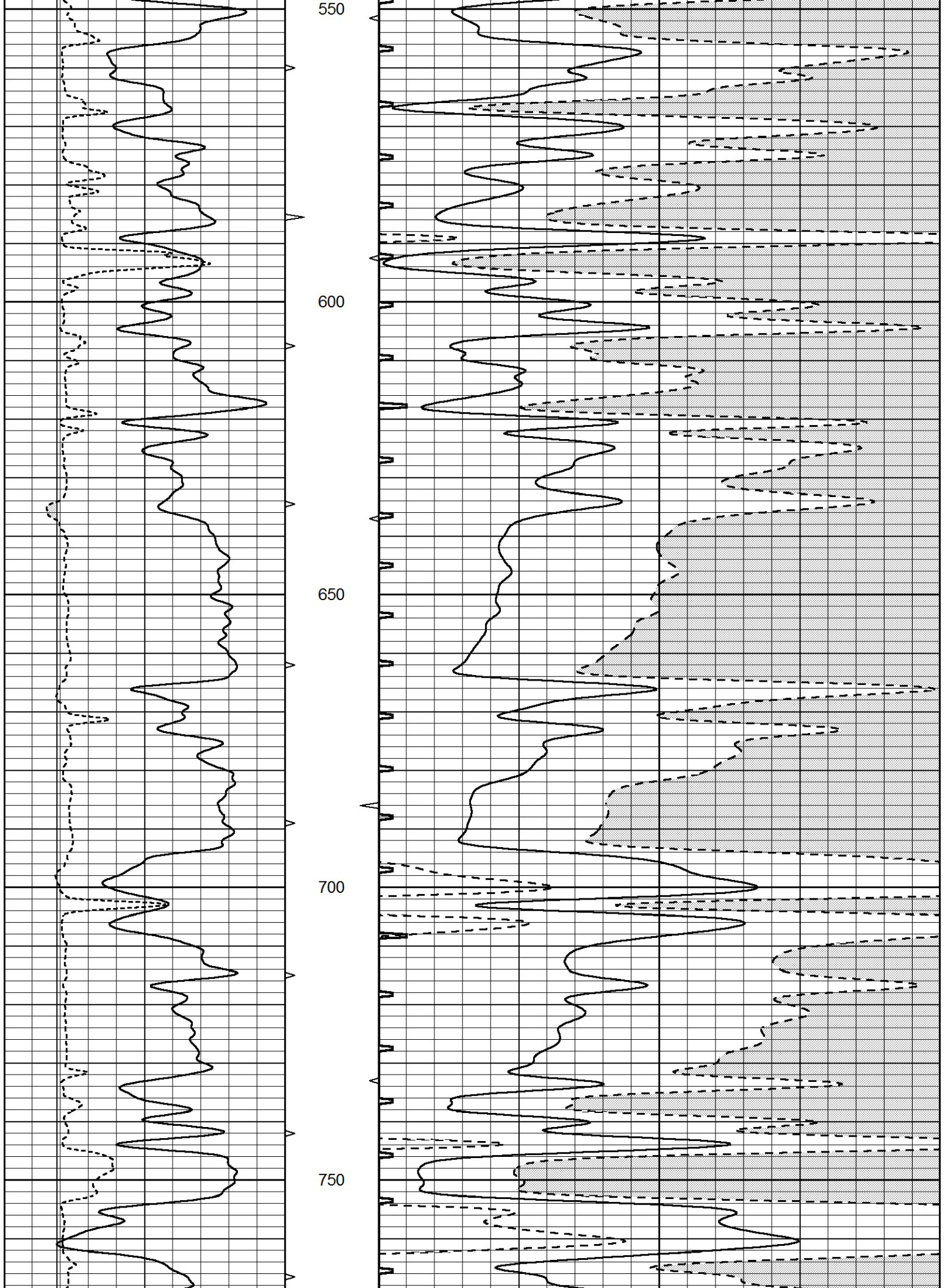
350

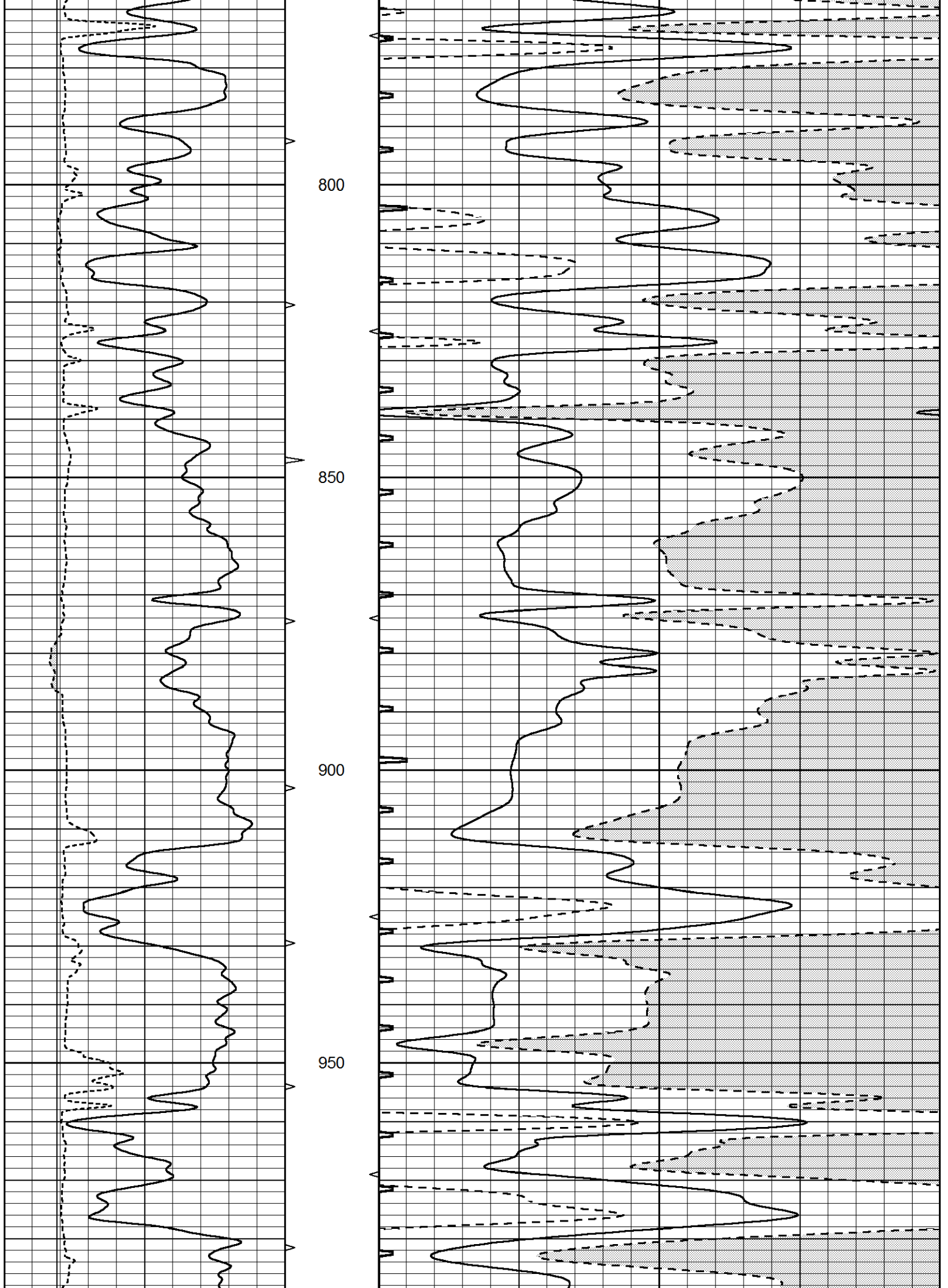
400

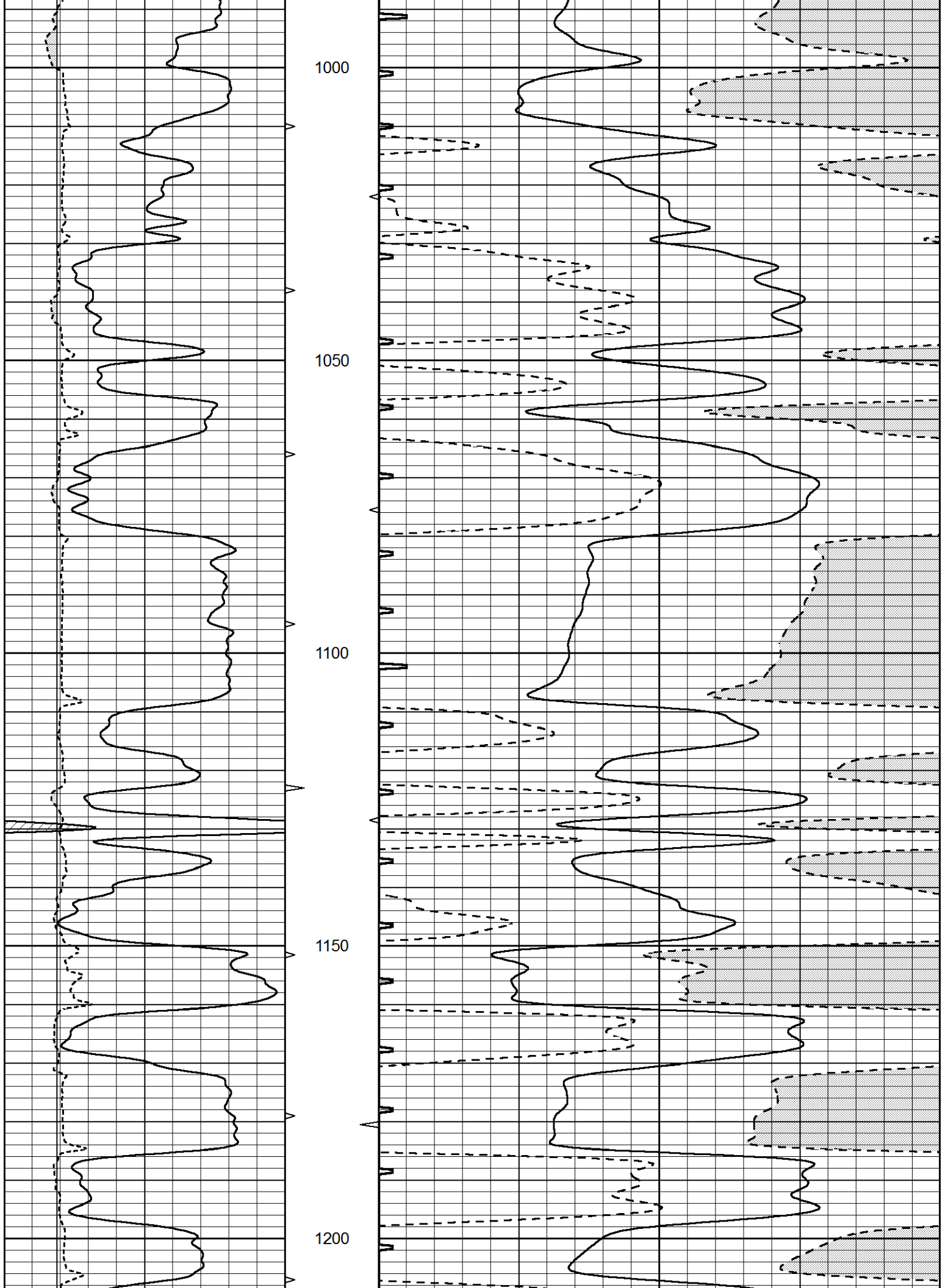
450

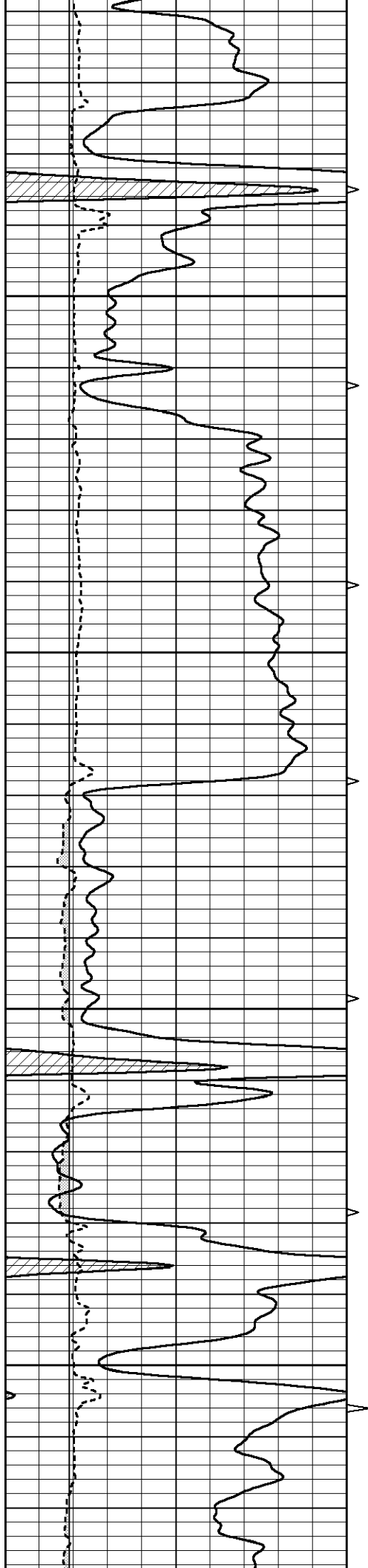
500









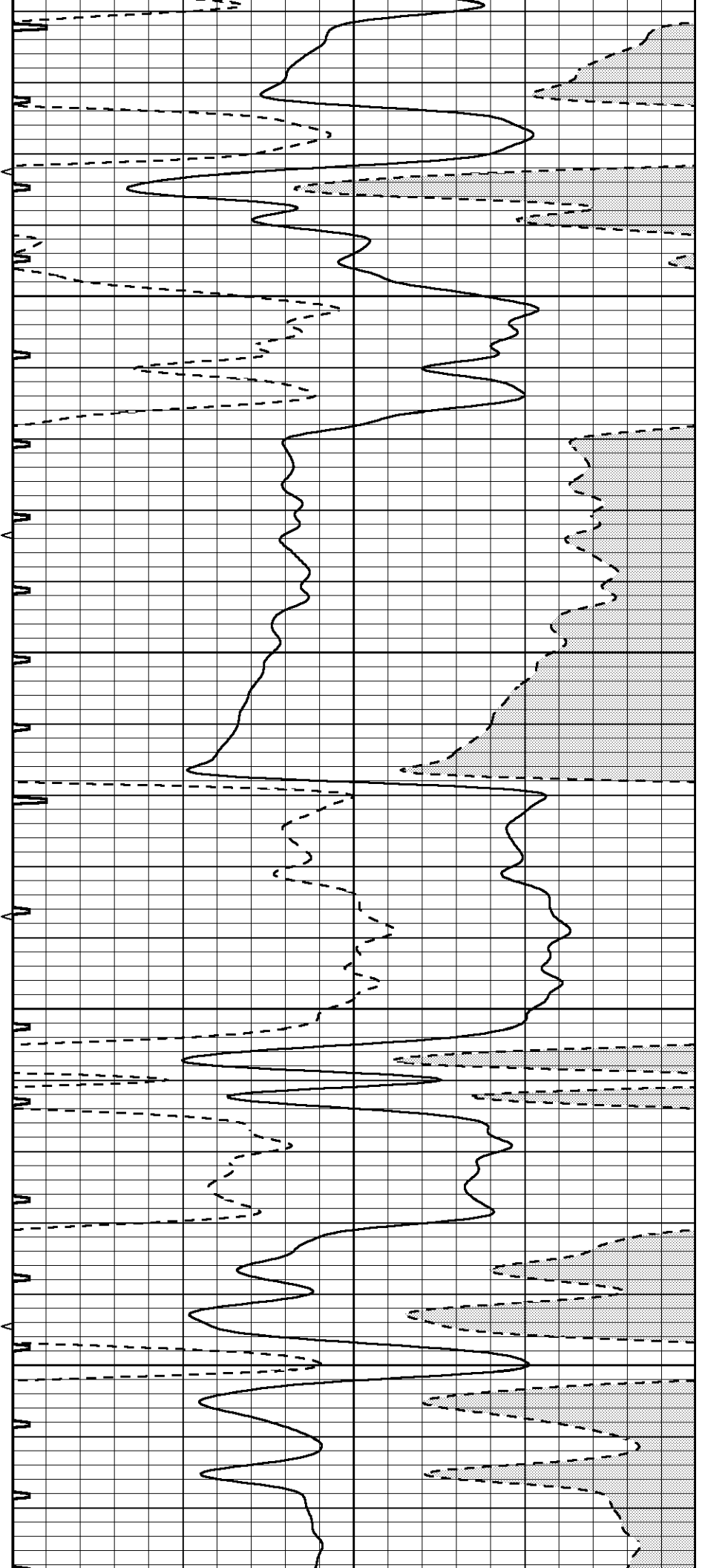


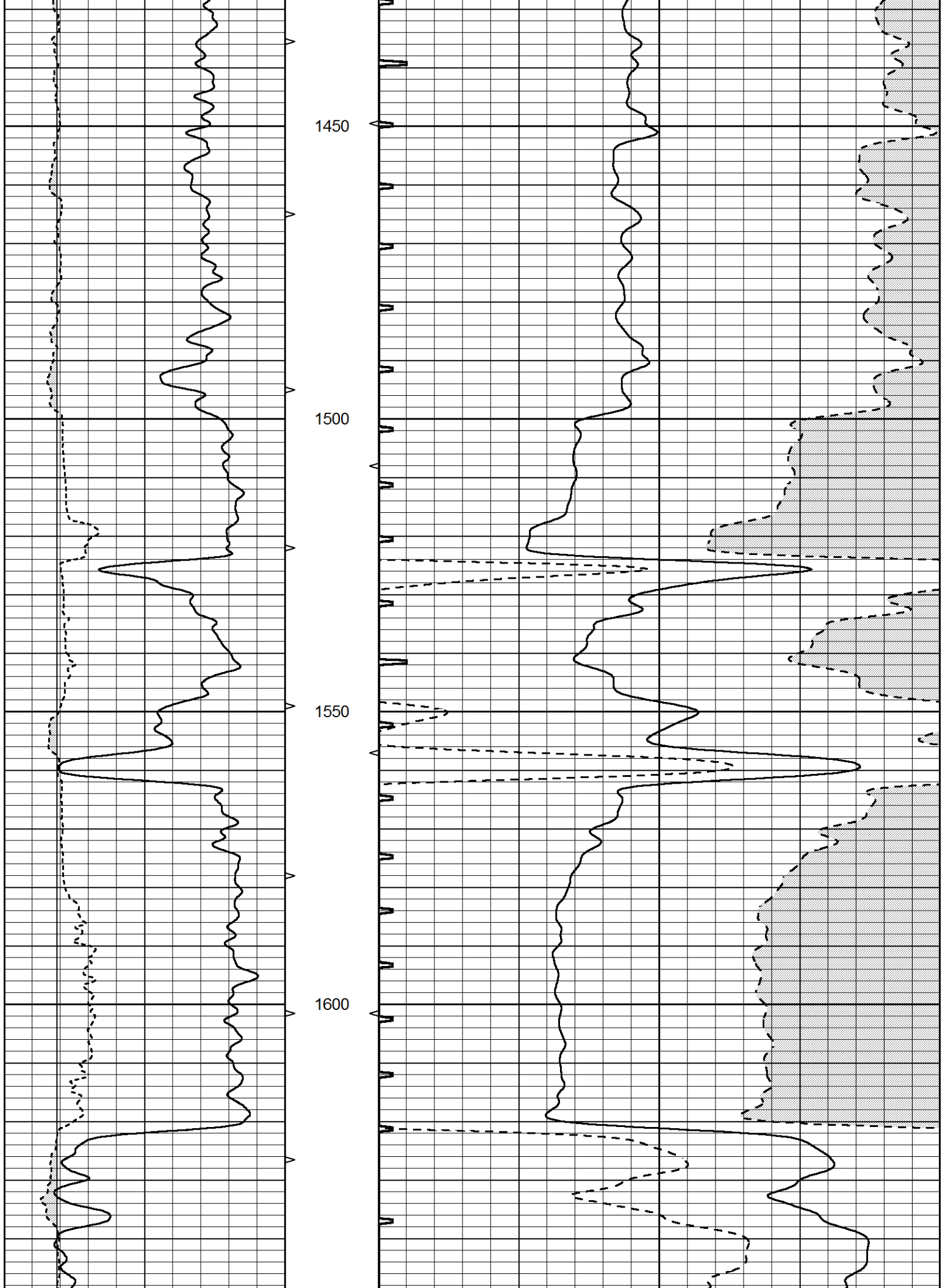
1250

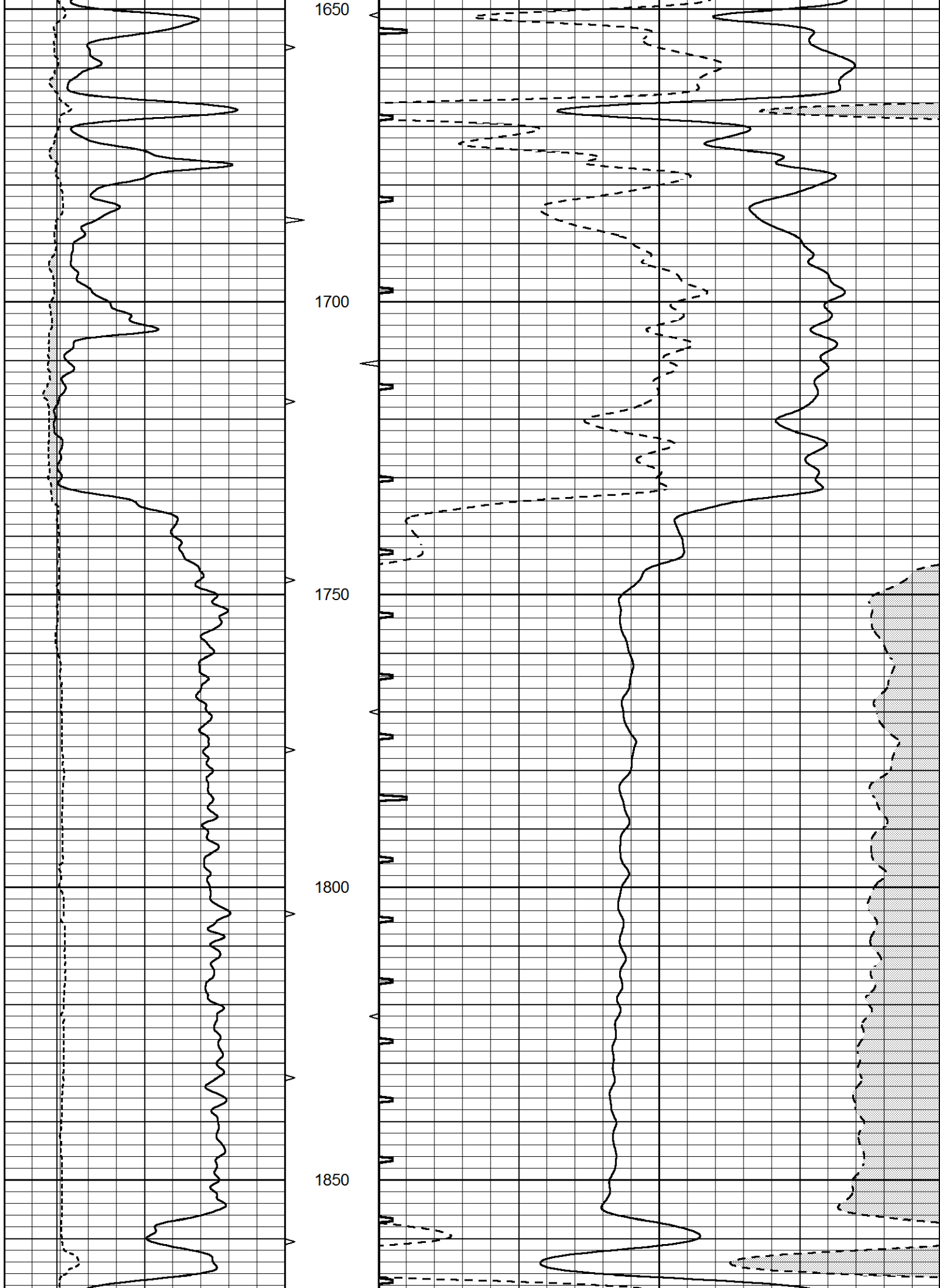
1300

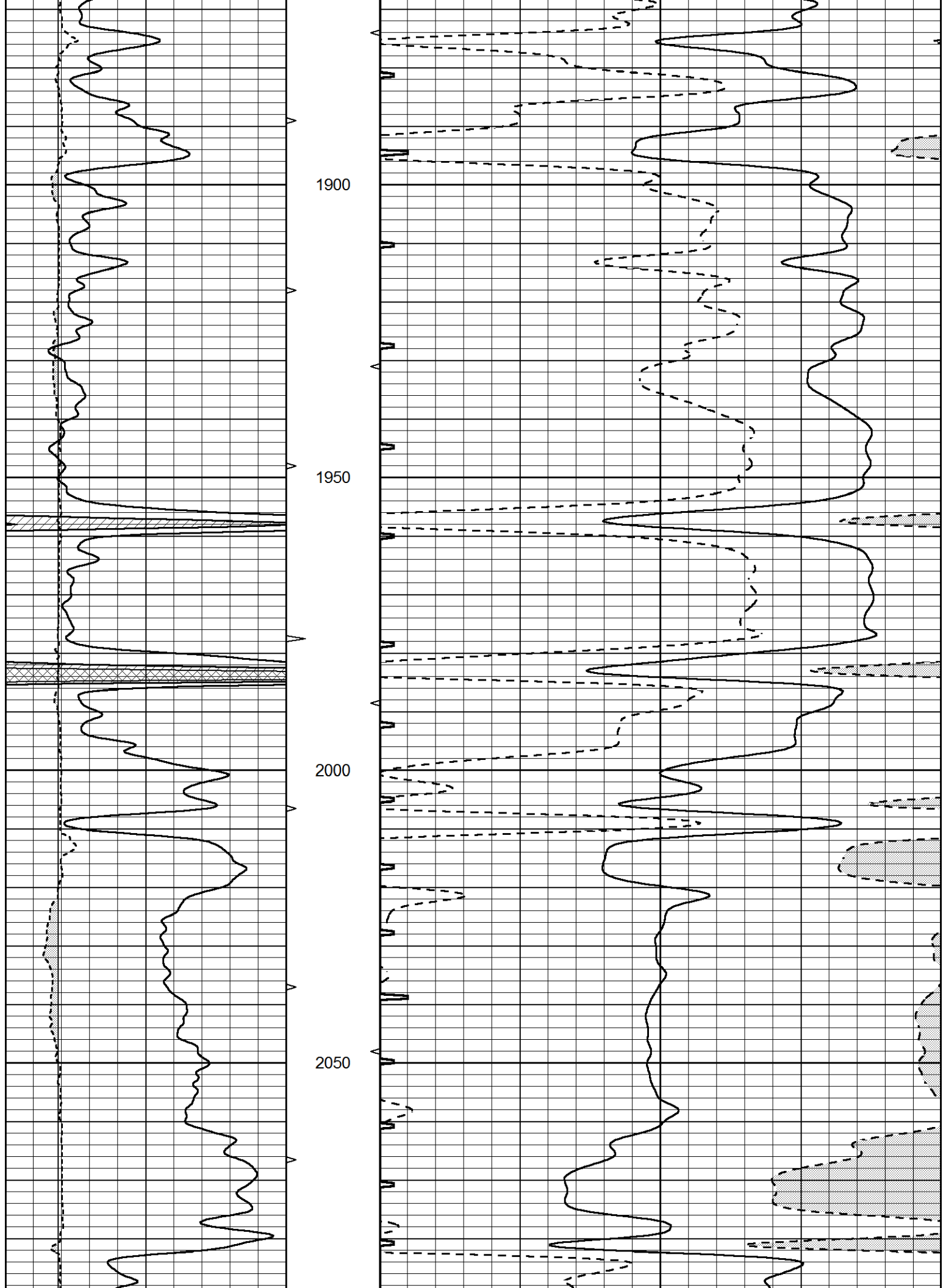
1350

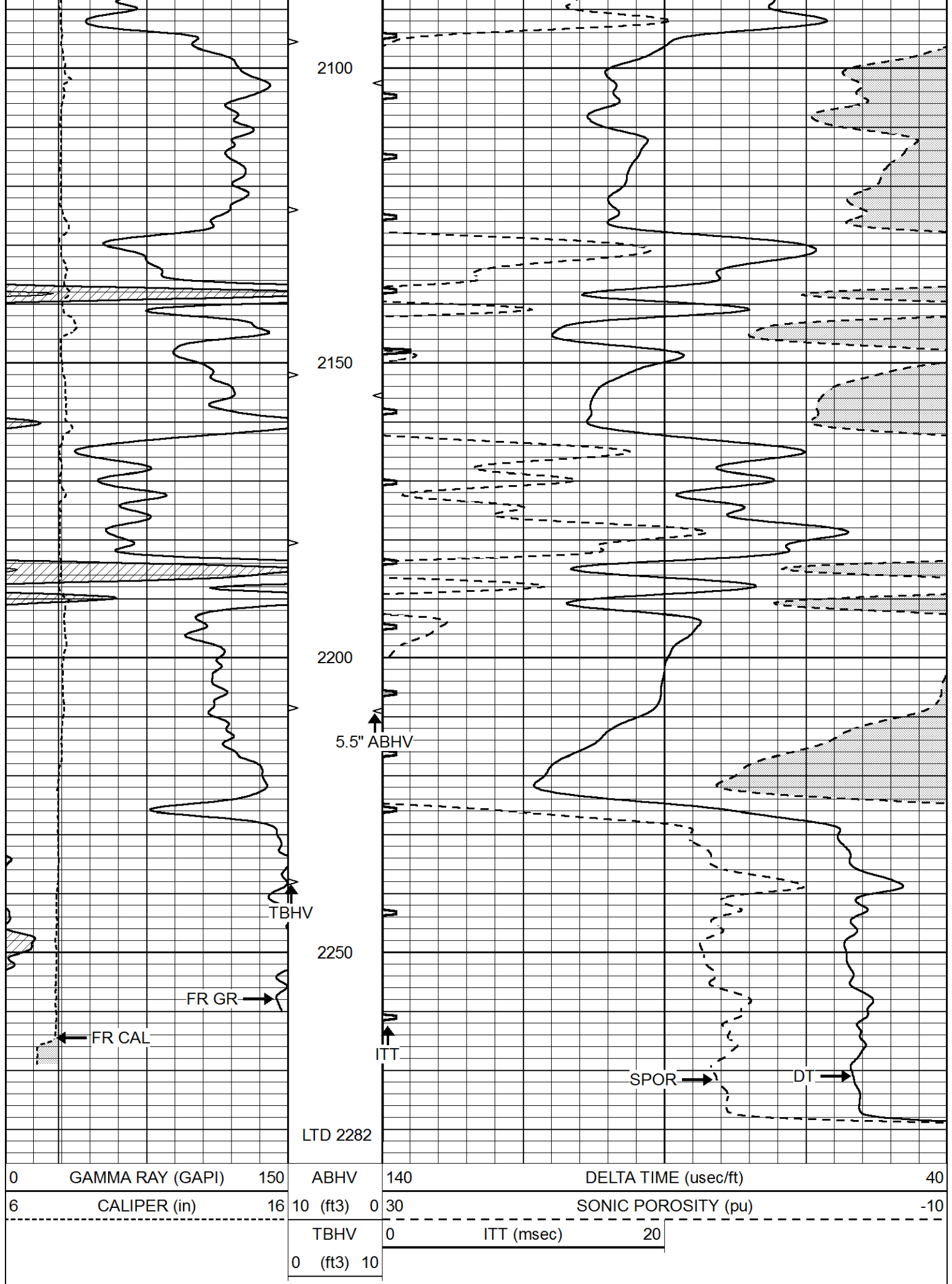
1400











2100

2150

2200

2250

LTD 282

5.5" ABHV

TBHV

FR GR

FR CAL

ITT

SPOR

DT

0 GAMMA RAY (GAPI) 150

6 CALIPER (in) 16

ABHV 140

10 (ft3) 0 30

TBHV 0

0 (ft3) 10

DELTA TIME (usec/ft) 40

SONIC POROSITY (pu) -10

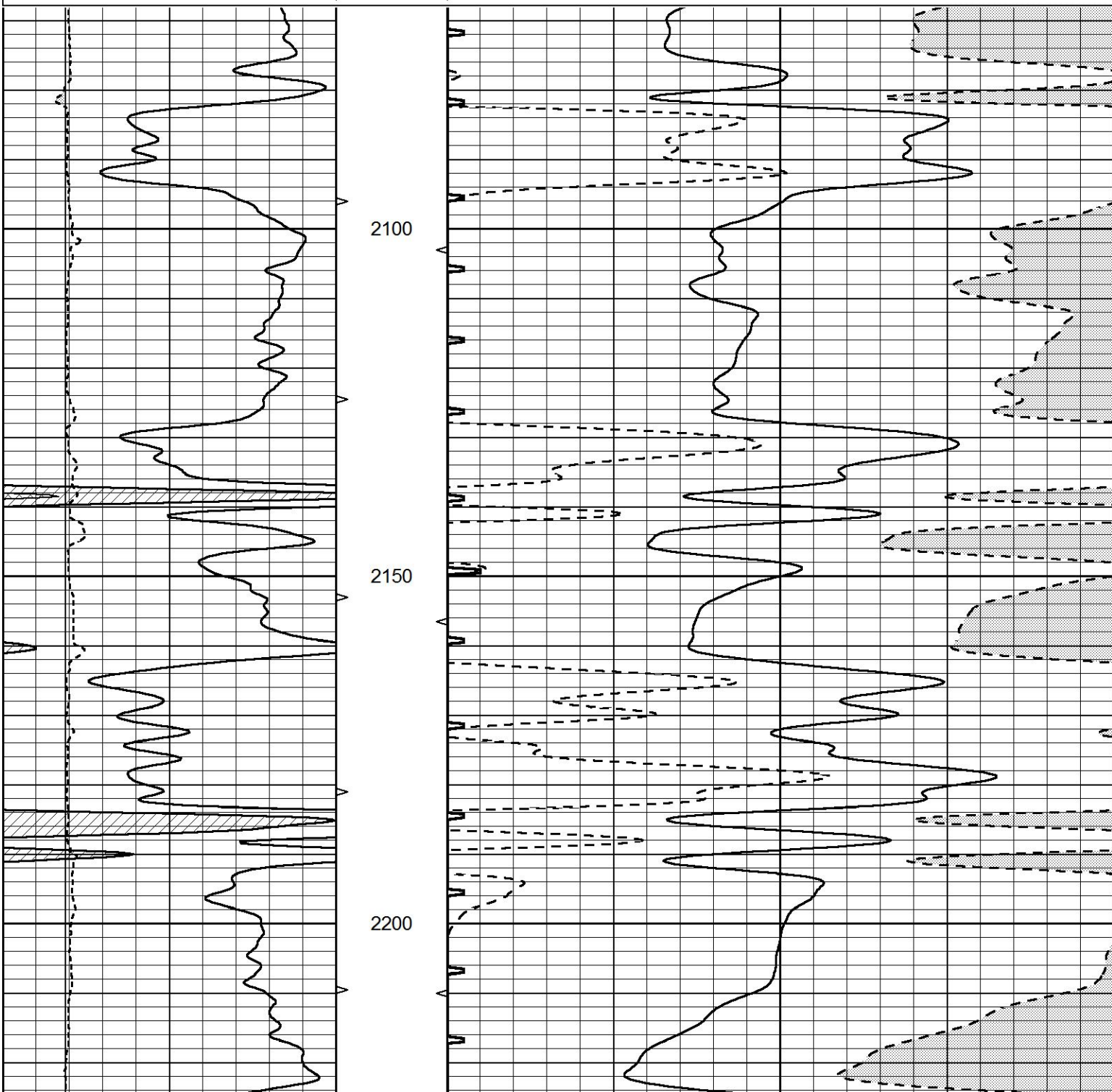
ITT (msec) 20

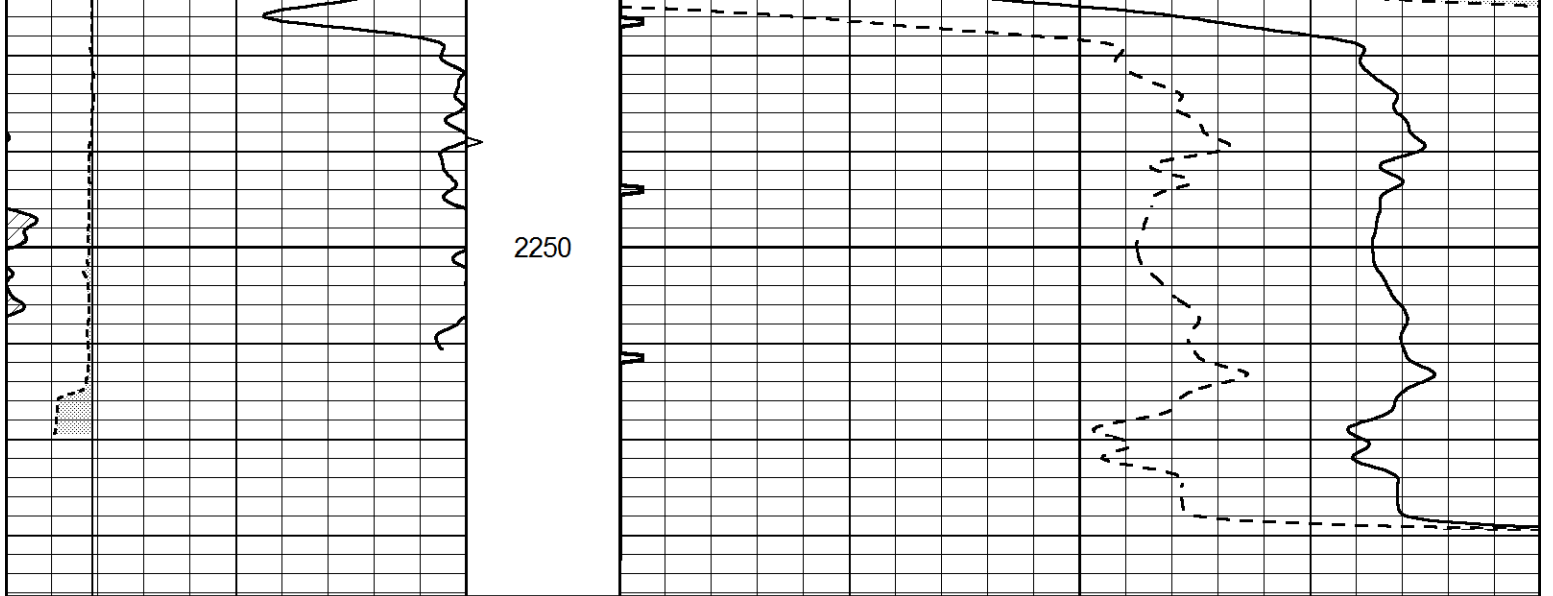


REPEAT SECTION

Database File 7587pe.db
 Dataset Pathname pass10.2
 Presentation Format _slt
 Dataset Creation Sat May 20 10:39:40 2023
 Charted by Depth in Feet scaled 1:240

0	GAMMA RAY (GAPI)	150	ABHV	140	DELTA TIME (usec/ft)	40
6	CALIPER (in)	16	10 (ft3) 0	30	SONIC POROSITY (pu)	-10
			TBHV	0	ITT (msec)	20
			0 (ft3) 10			





2250

0	GAMMA RAY (GAPI)	150	ABHV	140	DELTA TIME (usec/ft)	40
6	CALIPER (in)	16	10 (ft3) 0	30	SONIC POROSITY (pu)	-10
			TBHV	0	ITT (msec)	20
			0 (ft3) 10			