



**COMPENSATED  
DENSITY/NEUTRON  
PE LOG**

Company DARRAH OIL COMPANY, LLC.

Well CHURCH #1-14

Field UNNAMED

County BUTLER State KANSAS

Location: API #: 15-015-24175-0000

356' FNL & 1500' FEL

SEC 14 TWP 23S RGE 5E

Permanent Datum GROUND LEVEL Elevation 1509  
Log Measured From KELLY BUSHING 8' A.G.L  
Drilling Measured From KELLY BUSHING

Other Services  
DILMEL  
SONIC

Elevation

K.B. 1517  
D.F. 1515  
G.L. 1509

Date	5/20/23	
Run Number	ONE	
Depth Driller	2282	
Depth Logger	2282	
Bottom Logged Interval	2258	
Top Log Interval	200	
Casing Driller	8 5/8" @ 221	
Casing Logger	221	
Bit Size	7 7/8	
Type Fluid in Hole	CHEMICAL MUD	CHLORIDES 1,500 PPM
Density / Viscosity	9.5/40	
pH / Fluid Loss	10.0/9.6	
Source of Sample	FLOWLINE	
Rm @ Meas. Temp	1.80 @ 64F	
Rmf @ Meas. Temp	1.35 @ 64F	
Rmc @ Meas. Temp	2.16 @ 64F	
Source of Rmf / Rmc	MEASUREMENT	
Rm @ BHT	1.14 @ 101F	
Time Circulation Stopped	2 HOURS	
Time Logger on Bottom	4:30 A.M.	
Maximum Recorded Temperature	101F	
Equipment Number	8916	
Location	HAYS, KANSAS	
Recorded By	COLE ROBBEN	
Witnessed By	ROGER MARTIN	

<<< Fold Here >>>

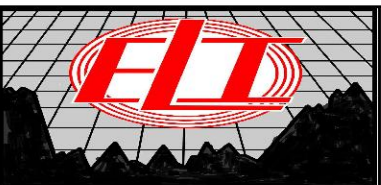
All interpretations are opinions based on inferences from electrical or other measurements and we cannot and do not guarantee the accuracy or correctness of any interpretation, and we shall not, except in the case of gross or willful negligence on our part, be liable or responsible for any loss, costs, damages, or expenses incurred or sustained by anyone resulting from any interpretation made by any of our officers, agents or employees. These interpretations are also subject to our general terms and conditions set out in our current Price Schedule.

**Comments**

THANK YOU FOR USING ELI WIRELINE SERVICES, HAYS, KS. ( 785 ) 628-6395

**DIRECTIONS:**

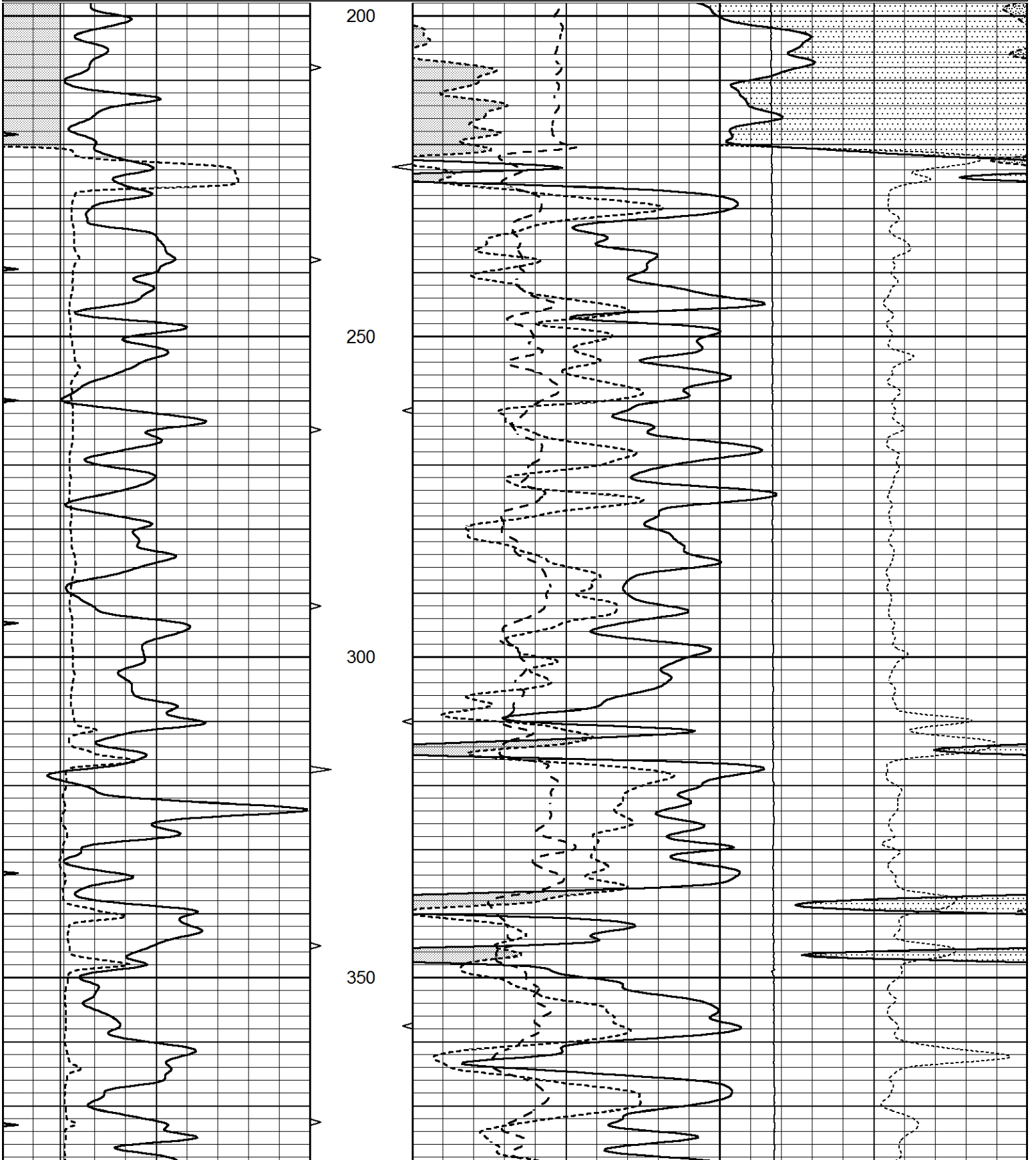
FROM MARION, KANSAS GO SOUTH ON US-77 FOR 14 MILES TO NW 160TH STREET,  
EAST ON NW 160TH STREET FOR 3/4 MILE, SOUTH INTO

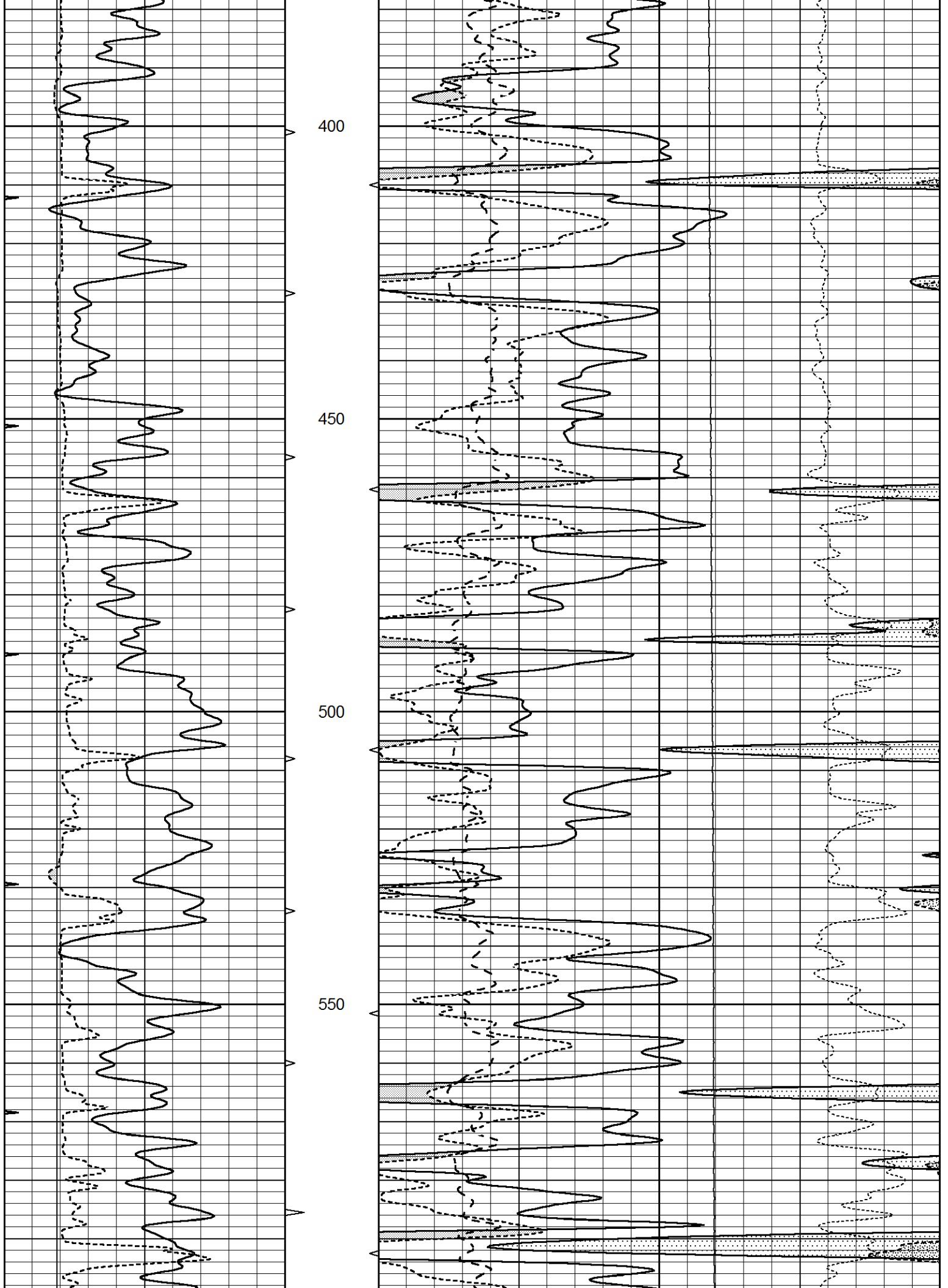


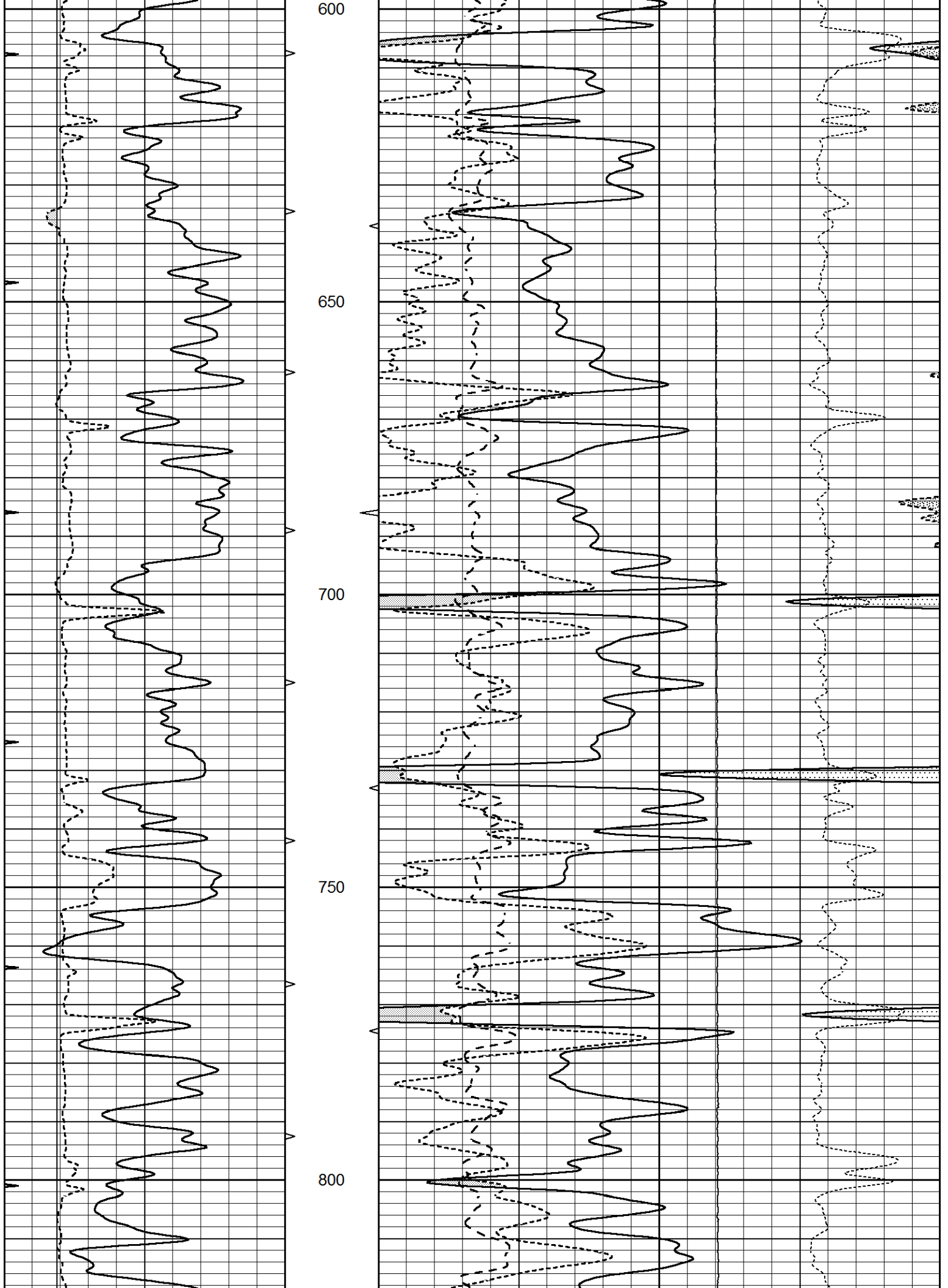
**MAIN SECTION**

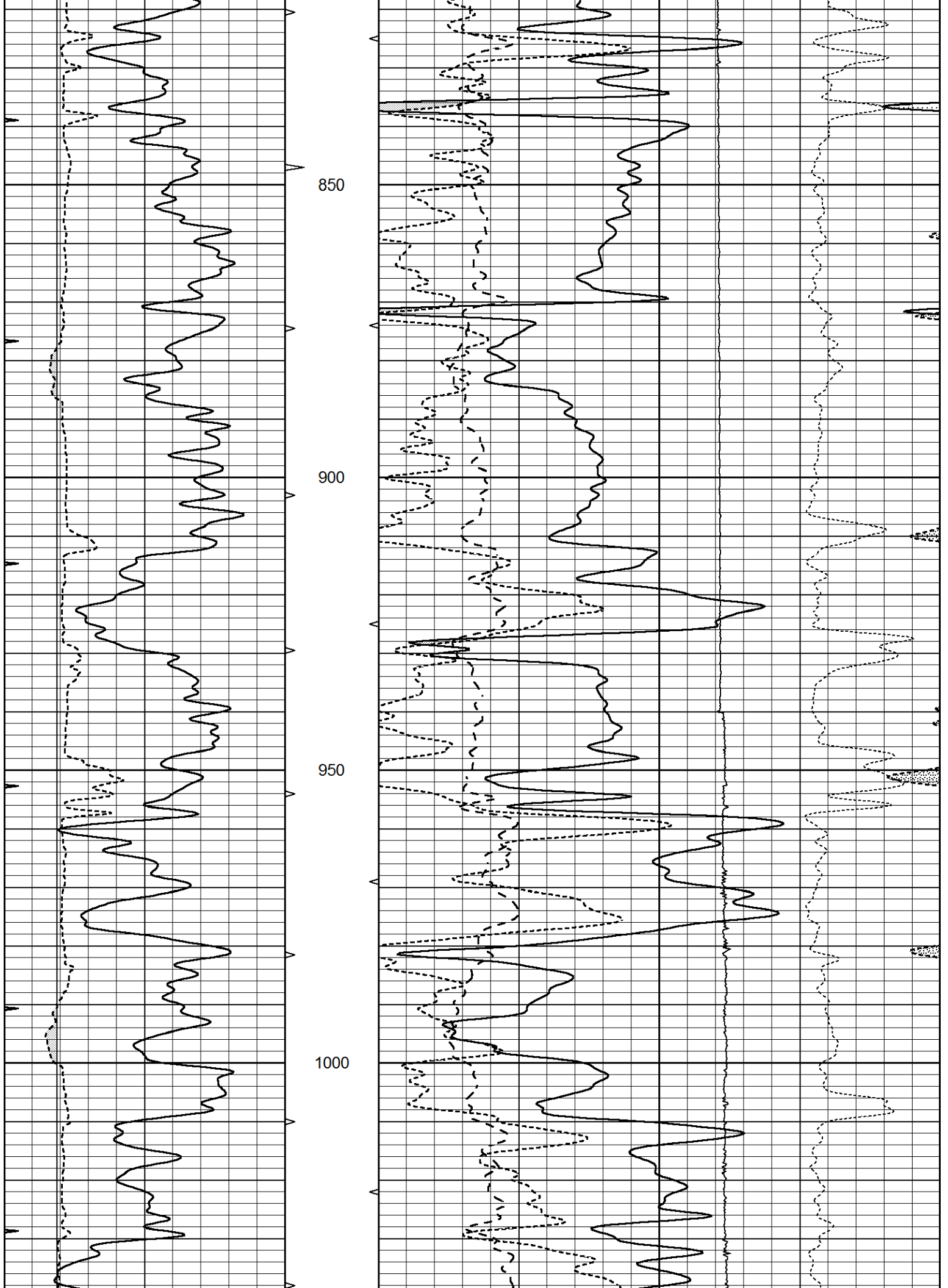
Database File 7587pe.db  
 Dataset Pathname pass5P3  
 Presentation Format \_ldt\_neu  
 Dataset Creation Sat May 20 10:55:57 2023  
 Charted by Depth in Feet scaled 1:240

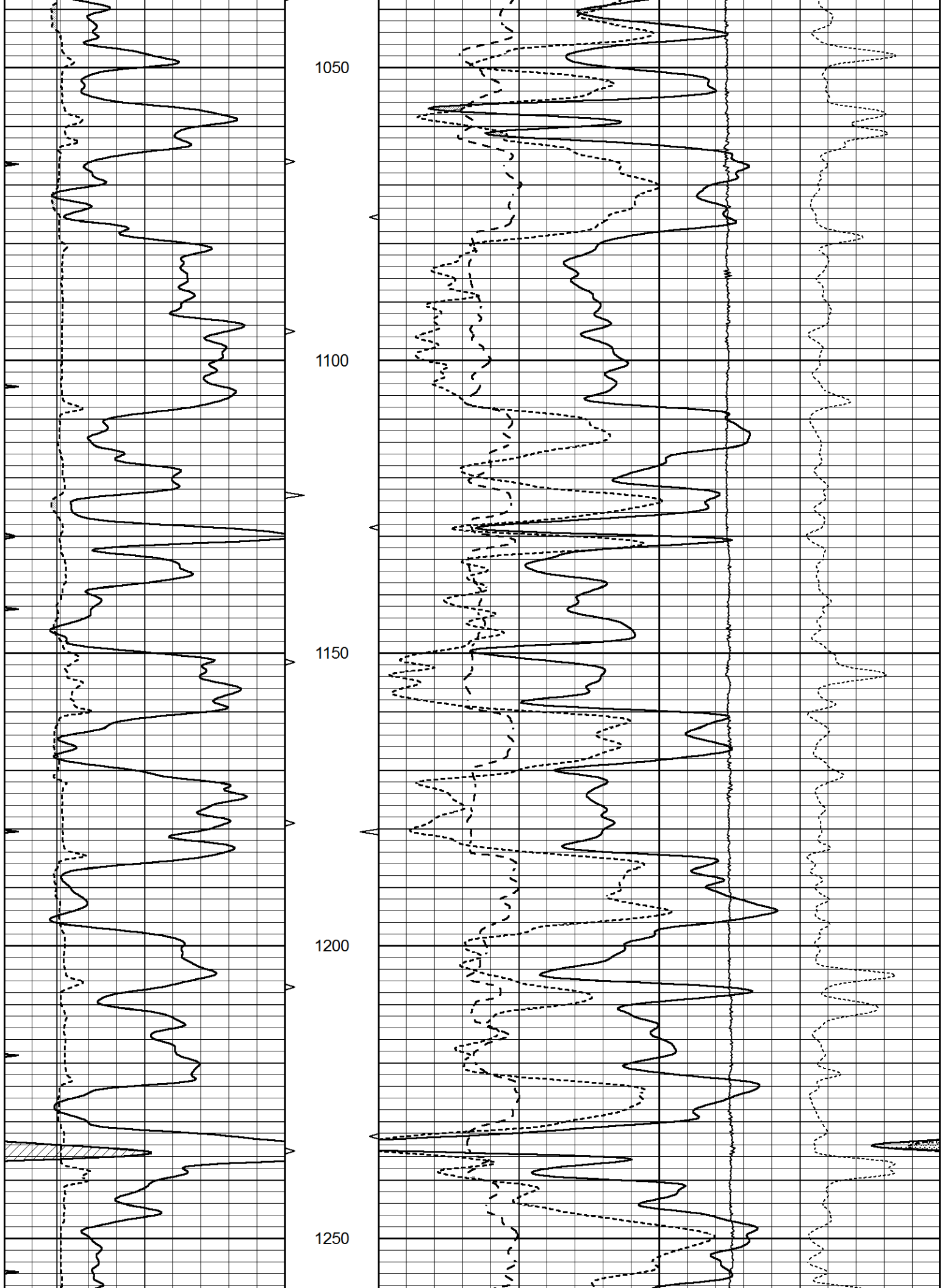
0	GAMMA RAY (GAPI)	150	ABHV	30	COMPENSATED DENSITY (pu)		-10
6	CALIPER (in)	16	10 (ft3)	0	COMPENSATED NEUTRON (pu)		-10
0	MINMK	20	TBHV	0	PE	10	-0.25 CORRECTION (g/cc) 0.25
			0 (ft3)	10			0 LTEN (lb) 5000











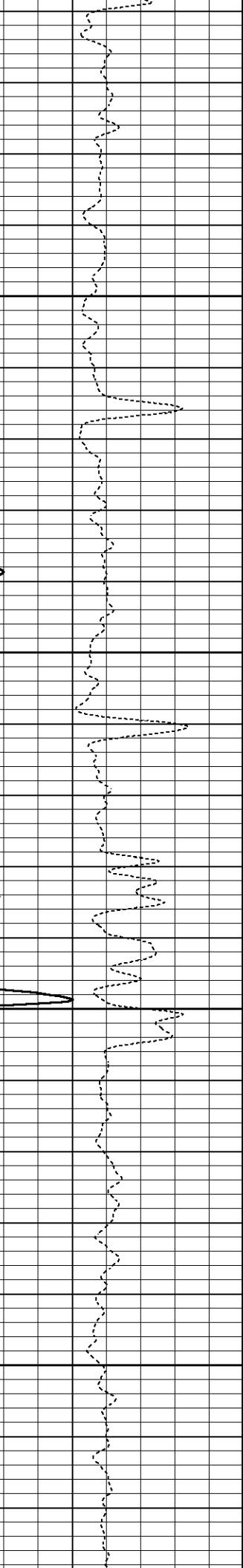
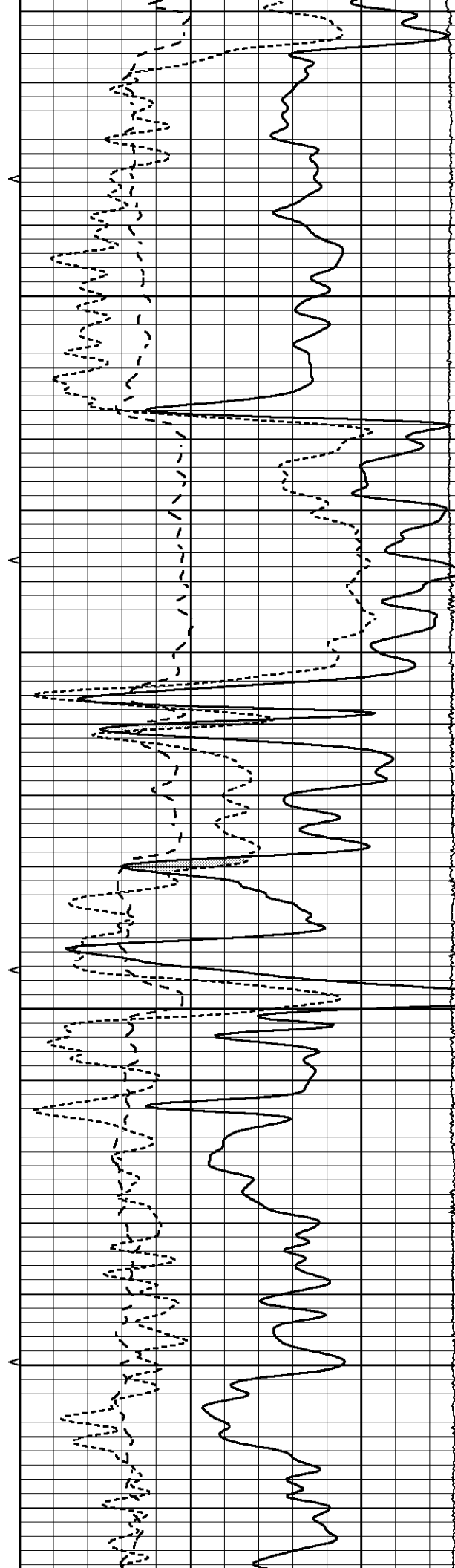


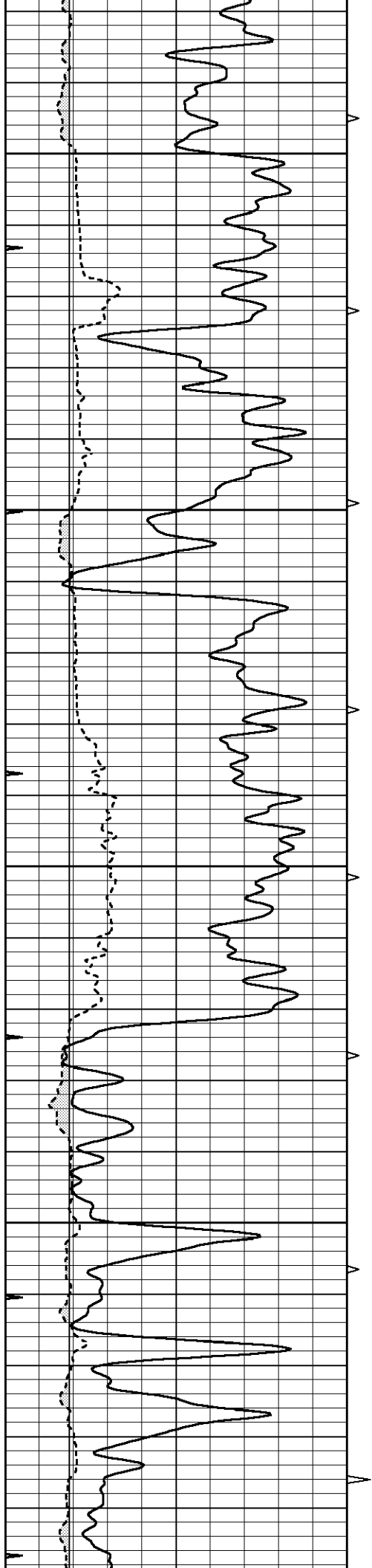
1300

1350

1400

1450



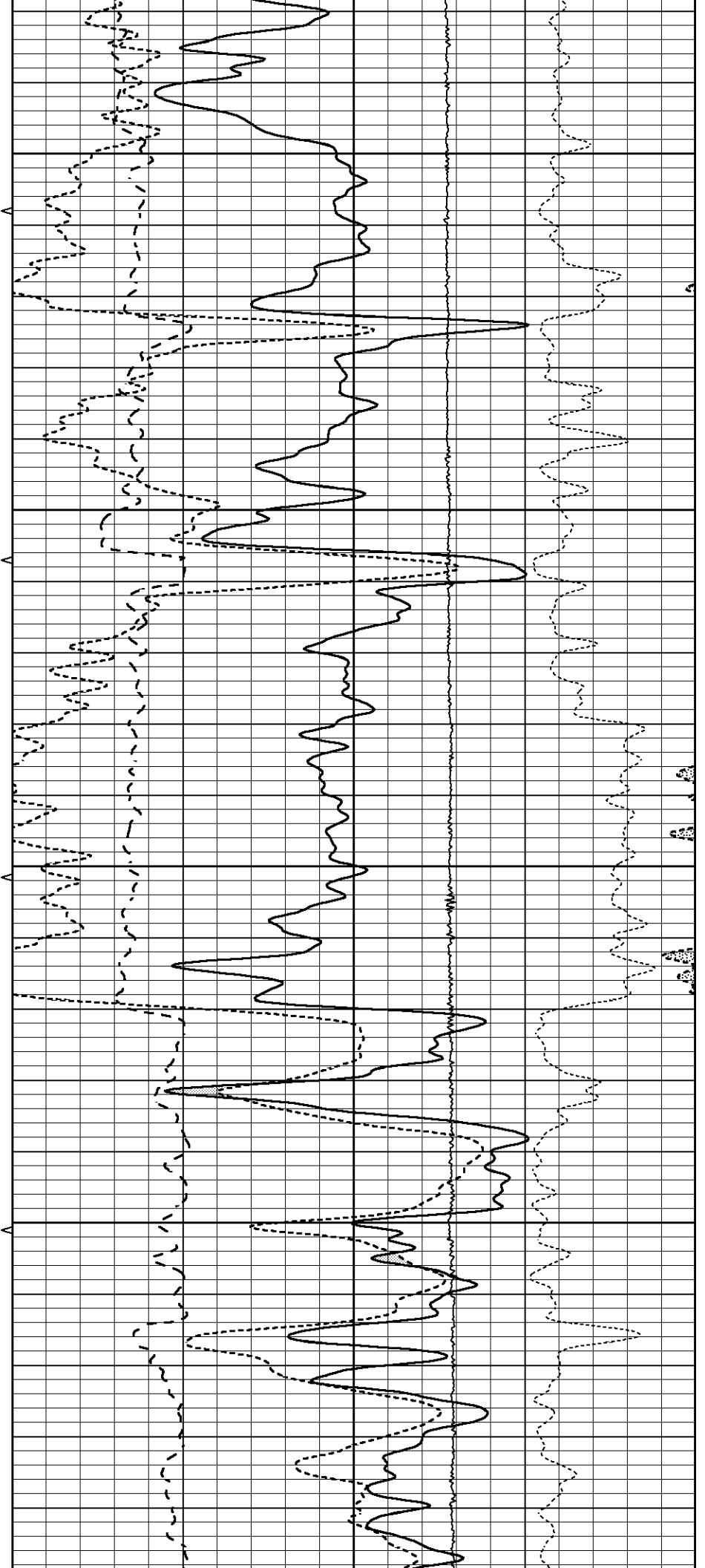


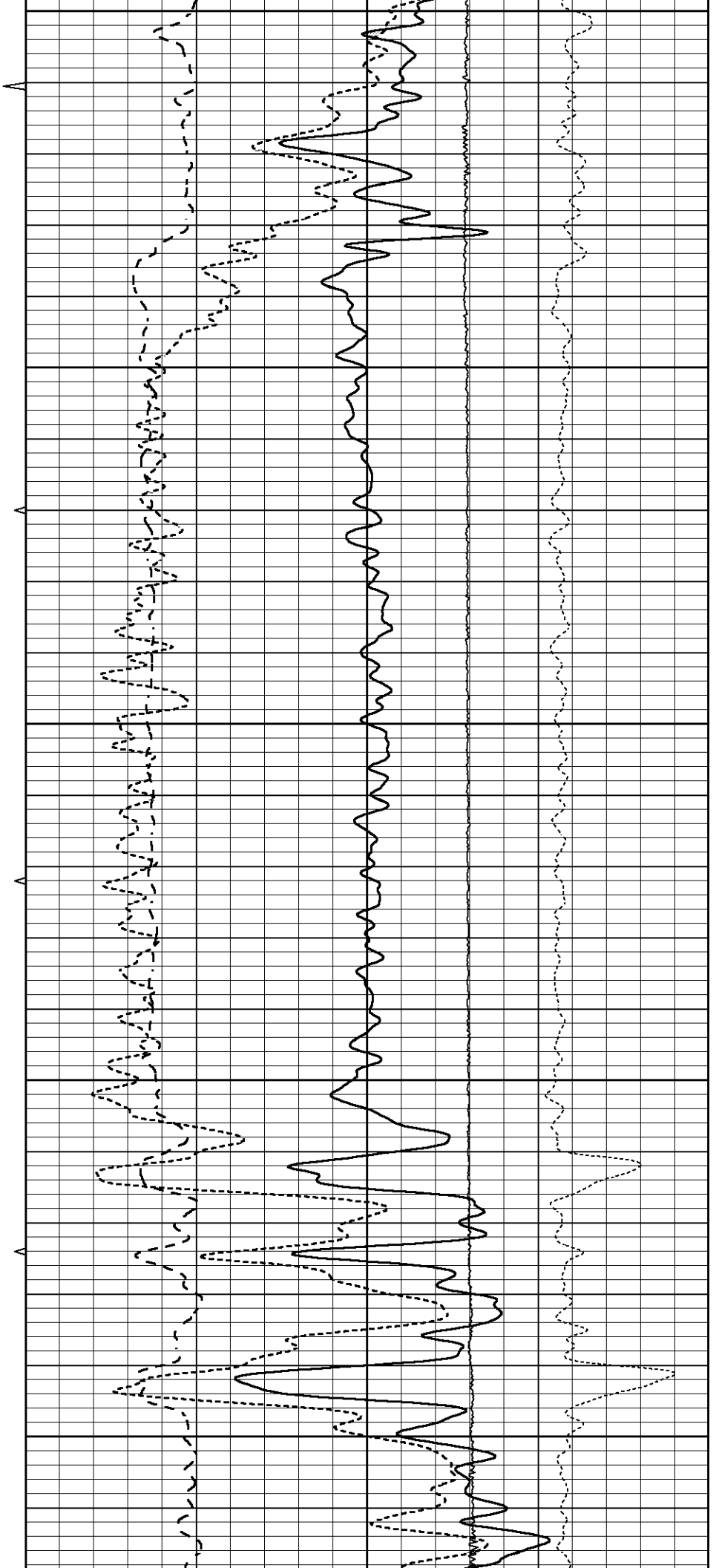
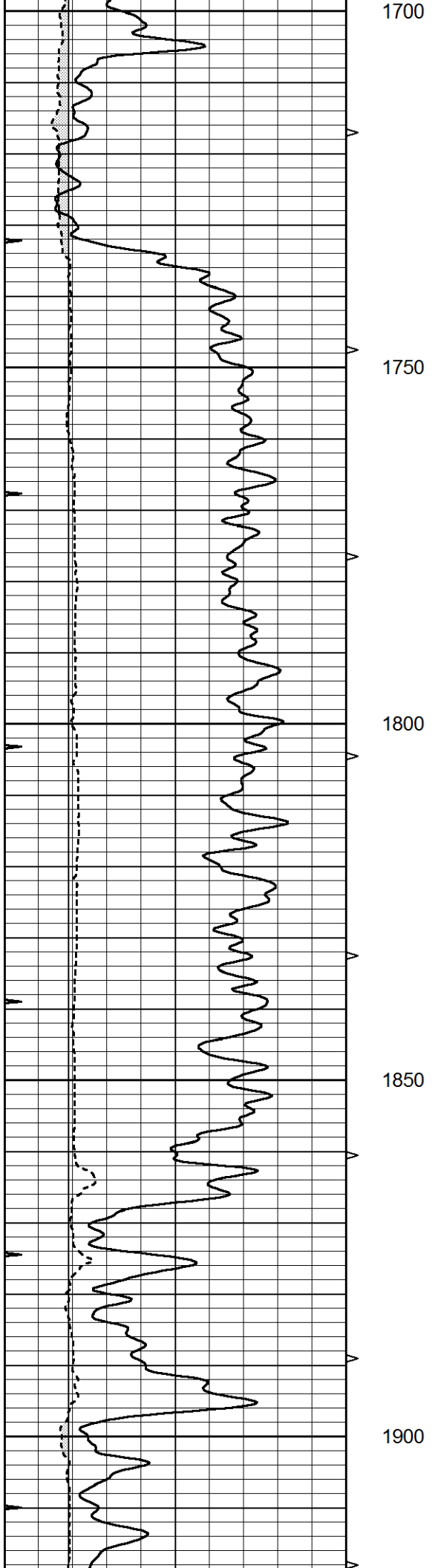
1500

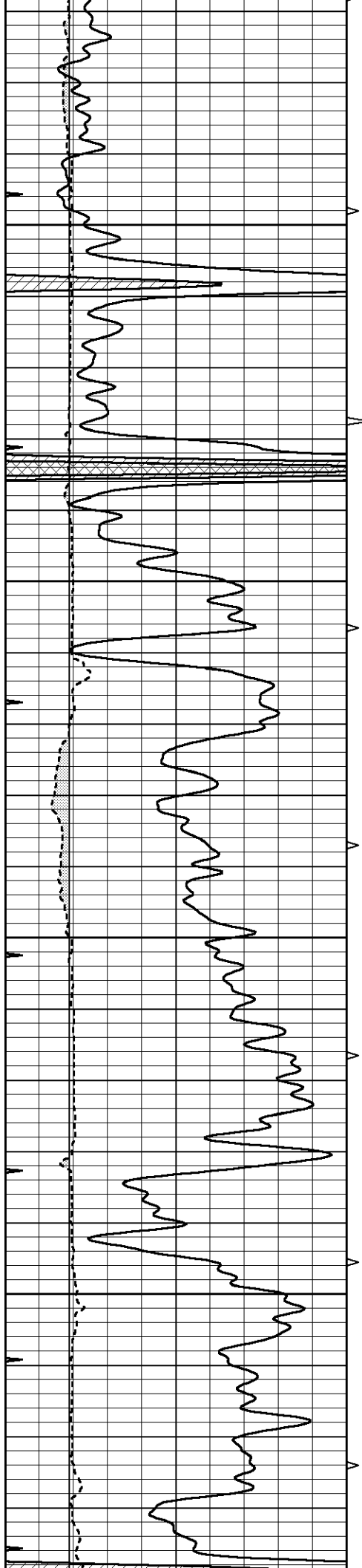
1550

1600

1650





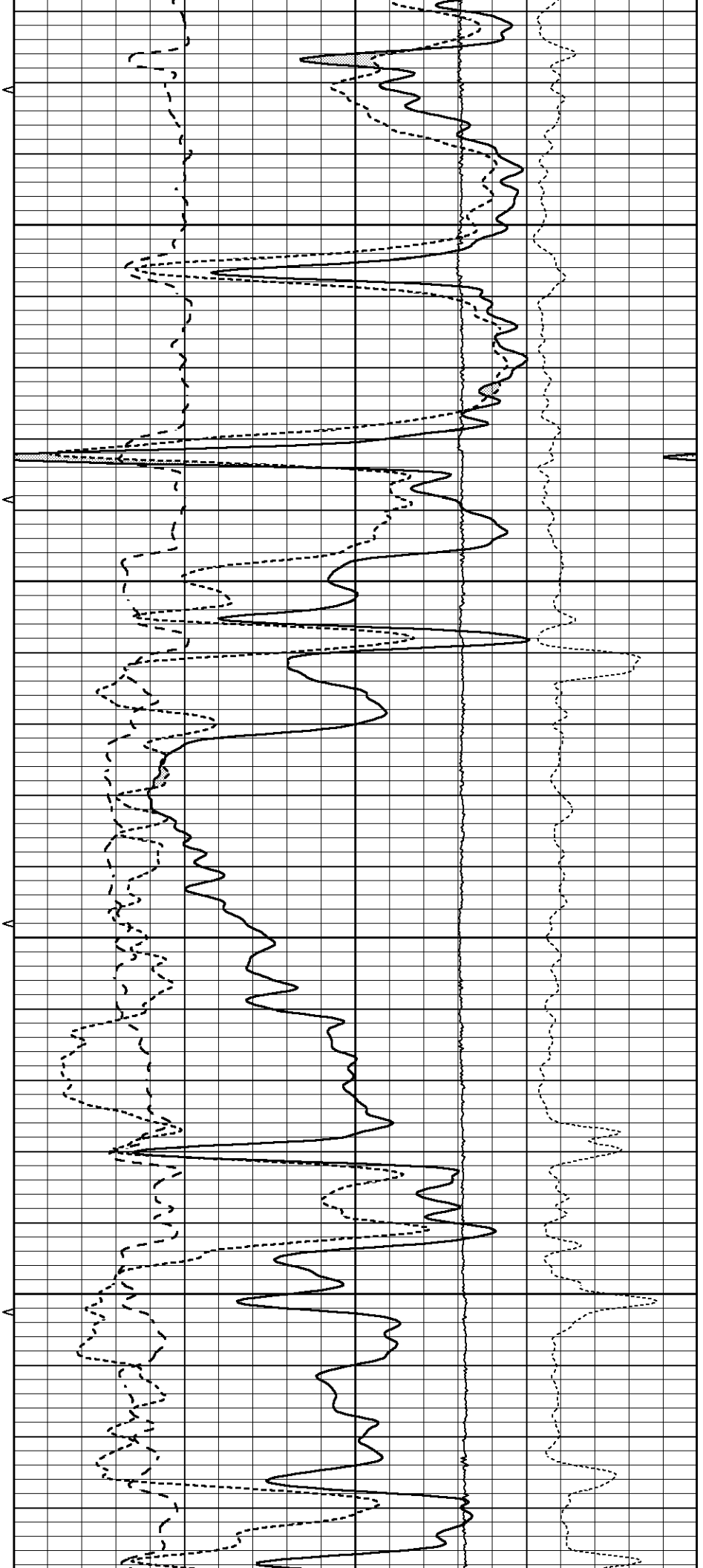


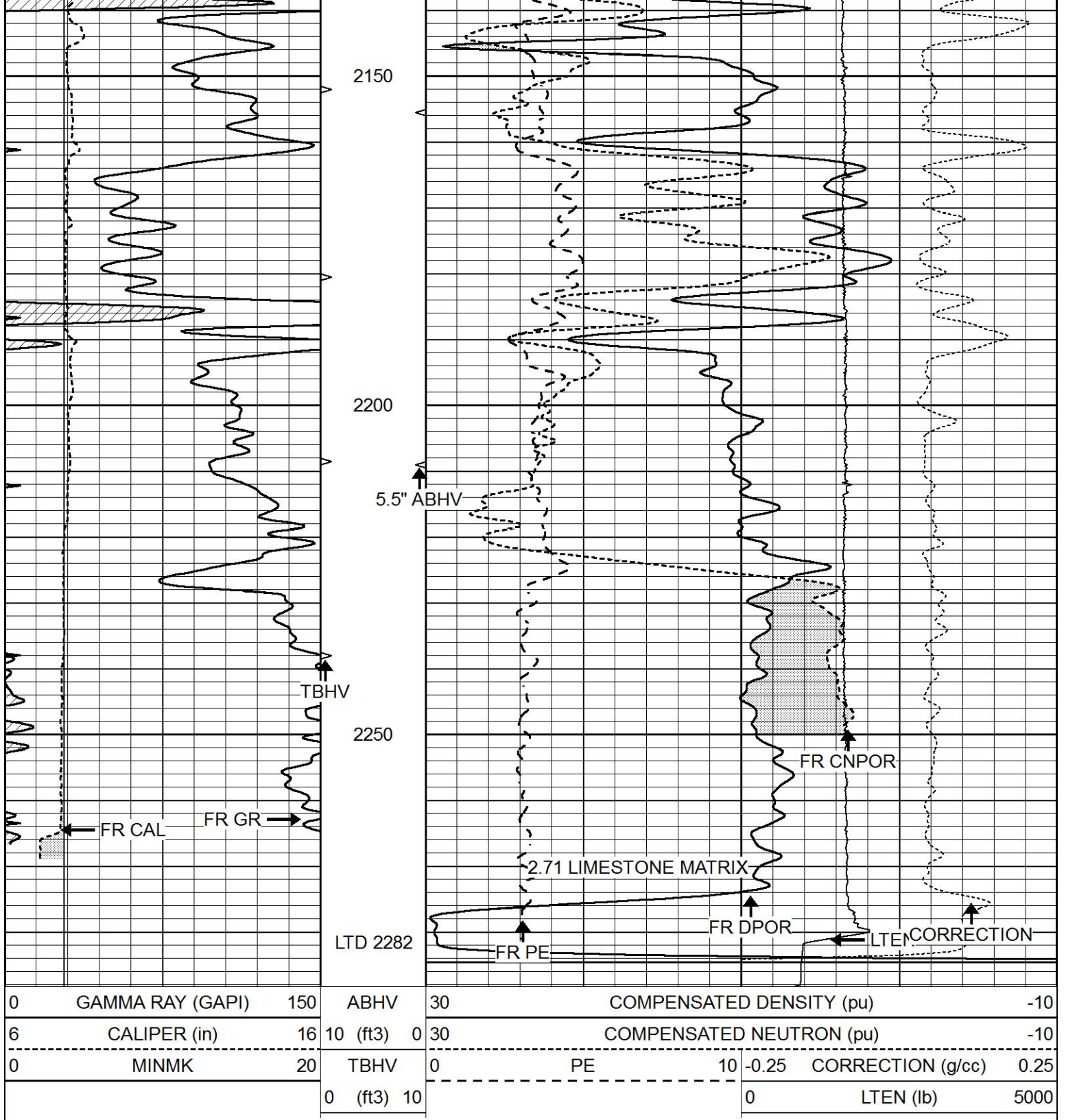
1950

2000

2050

2100



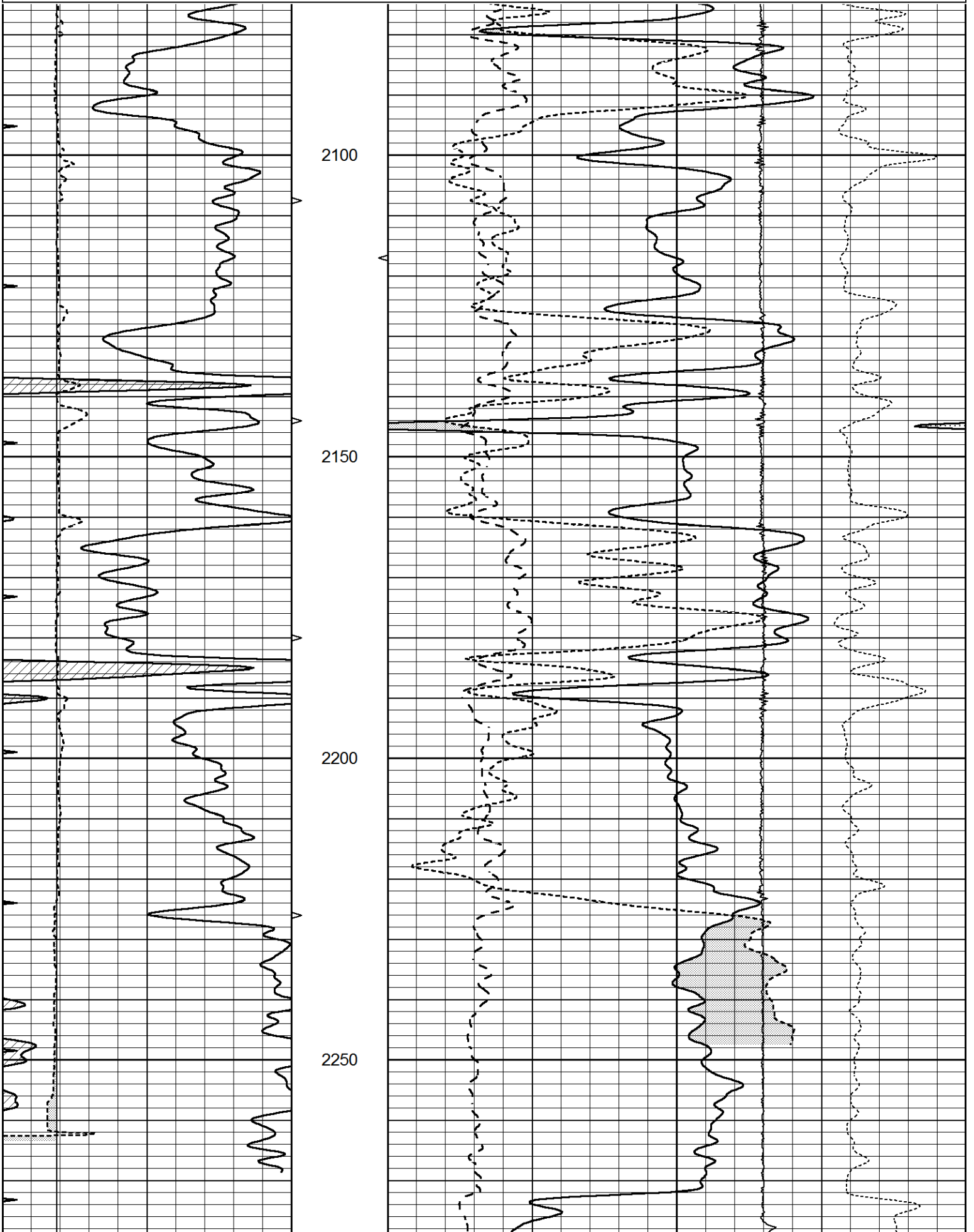


# REPEAT SECTION

Database File 7587pe.db  
 Dataset Pathname pass7R  
 Presentation Format \_ldt\_neu  
 Dataset Creation Sat May 20 08:35:27 2023  
 Charted by Depth in Feet scaled 1:240

0	GAMMA RAY (GAPI)	150	ABHV	30	COMPENSATED DENSITY (pu)	-10
---	------------------	-----	------	----	--------------------------	-----

6	CALIPER (in)	16	10 (ft3)	0	30	COMPENSATED NEUTRON (pu)			-10
0	MINMK	20	TBHV	0	PE	10	-0.25	CORRECTION (g/cc)	0.25
			0 (ft3)	10			0	LTEN (lb)	5000



0	GAMMA RAY (GAPI)	150	ABHV	30	COMPENSATED DENSITY (pu)				-10	
6	CALIPER (in)	16	10 (ft3)	0	30	COMPENSATED NEUTRON (pu)				-10
0	MINMK	20	TBHV	0	PE	10	-0.25	CORRECTION (g/cc)	0.25	
			0 (ft3)	10			0	LTEN (lb)	5000	

Calibration Report

Database File 7587pe.db  
 Dataset Pathname pass5P3  
 Dataset Creation Sat May 20 10:55:57 2023

Litho Density Calibration Report  
 Serial: 005 Model: Litho\_Ver3

Master Calibration

Performed Fri May 13 13:54:36 2022

	Background	Magnesium	Aluminum	Aluminum+Fe	
Window 1	1363.1	46477.8	11515.9	9589.9	cps
Window 2	1239.4	36488.4	9270.1	7998.9	cps
Window 3	1044.3	20488.1	5500.7	4913.3	cps
Window 4	315.7	358.7	321.5	319.5	cps
Long Space	0.0	35249.0	8030.7	6759.4	cps
Short Space	1.4	9675.7	6523.4	5391.9	cps
Rho		1.7100	2.5900	0.0000	g/cc
Pe		2.0000	2.7500	5.7900	
Rib Angle	: 45.1	Rib Slope	: 1.003	Density/Spine Ratio	: 0.575
Spine Angle	: 75.1	Spine Slope	: 3.752	Spine Intercept	: -24.0

Before Survey Verification

Performed Wed Dec 31 18:00:00 1969

Window 1	0.0	0.0	0.0	0.0	cps
Window 2	0.0	0.0	0.0	0.0	cps
Window 3	0.0	0.0	0.0	0.0	cps
Window 4	0.0	0.0	0.0	0.0	cps
Long Space	0.0	0.0	0.0	0.0	cps
Short Space	0.0	0.0	0.0	0.0	cps
Measured Rho		0.0000	0.0000	0.0000	g/cc
Measured Correction		0.0000	0.0000	0.0000	g/cc
Measured Pe			0.0000	0.0000	

After Survey Verification

Performed Wed Dec 31 18:00:00 1969

Window 1	0.0	0.0	0.0	0.0	cps
Window 2	0.0	0.0	0.0	0.0	cps
Window 3	0.0	0.0	0.0	0.0	cps
Window 4	0.0	0.0	0.0	0.0	cps
Long Space	0.0	0.0	0.0	0.0	cps
Short Space	0.0	0.0	0.0	0.0	cps
Measured Rho		0.0000	0.0000	0.0000	g/cc
Measured Correction		0.0000	0.0000	0.0000	g/cc
Measured Pe			0.0000	0.0000	

Serial Number: 080621PMC  
Tool Model: NABORS

PRE-SURVEY VERIFICATION

Detector	Readings	Measured	Target
Short Space	cps		
Long Space	cps	pu	pu

POST-SURVEY VERIFICATION

Detector	Readings	Measured	Target
Short Space	cps		
Long Space	cps	pu	pu

Gamma Ray Calibration Report

Serial Number:	7	
Tool Model:	Probe1	
Performed:	Sun Apr 02 09:22:40 2023	
Calibrator Value:	1.0	GAPI
Background Reading:	0.0	cps
Calibrator Reading:	1.0	cps
Sensitivity:	0.4000	GAPI/cps