

MICRO
LOG



Company DARRAH OIL COMPANY, LLC.

Well CHURCH #1-14

Field UNNAMED

County BUTLER State KANSAS

Location: API #: 15-015-24175-0000

356' FNL & 1500' FEL

SEC 14 TWP 23S RGE 5E

Permanent Datum GROUND LEVEL Elevation 1509

Log Measured From KELLY BUSHING 8' A.G.L

Drilling Measured From KELLY BUSHING

Other Services
CDL/CNL/PE
DIL/SON

Elevation

K.B. 1517
D.F. 1515
G.L. 1509

Date	5/20/23
Run Number	TWO
Depth Driller	2282
Depth Logger	2282
Bottom Logged Interval	2266
Top Log Interval	200
Casing Driller	8 5/8" @ 221
Casing Logger	221
Bit Size	7 7/8
Type Fluid in Hole	CHEMICAL MUD
Density / Viscosity	9.5/40
pH / Fluid Loss	10.0/9.6
Source of Sample	FLOWLINE
Rm @ Meas. Temp	1.80 @ 64F
Rmf @ Meas. Temp	1.35 @ 64F
Rmc @ Meas. Temp	2.16 @ 64F
Source of Rmf / Rmc	MEASUREMENT
Rm @ BHT	1.14 @ 101F
Time Circulation Stopped	4 HOURS
Time Logger on Bottom	6:30 A.M.
Maximum Recorded Temperature	101F
Equipment Number	8916
Location	HAYS, KANSAS
Recorded By	COLE ROBBEN
Witnessed By	ROGER MARTIN

<<< Fold Here >>>

All interpretations are opinions based on inferences from electrical or other measurements and we cannot and do not guarantee the accuracy or correctness of any interpretation, and we shall not, except in the case of gross or willful negligence on our part, be liable or responsible for any loss, costs, damages, or expenses incurred or sustained by anyone resulting from any interpretation made by any of our officers, agents or employees. These interpretations are also subject to our general terms and conditions set out in our current Price Schedule.

Comments

THANK YOU FOR USING ELI WIRELINE SERVICES, HAYS, KS. (785) 628-6395

DIRECTIONS:

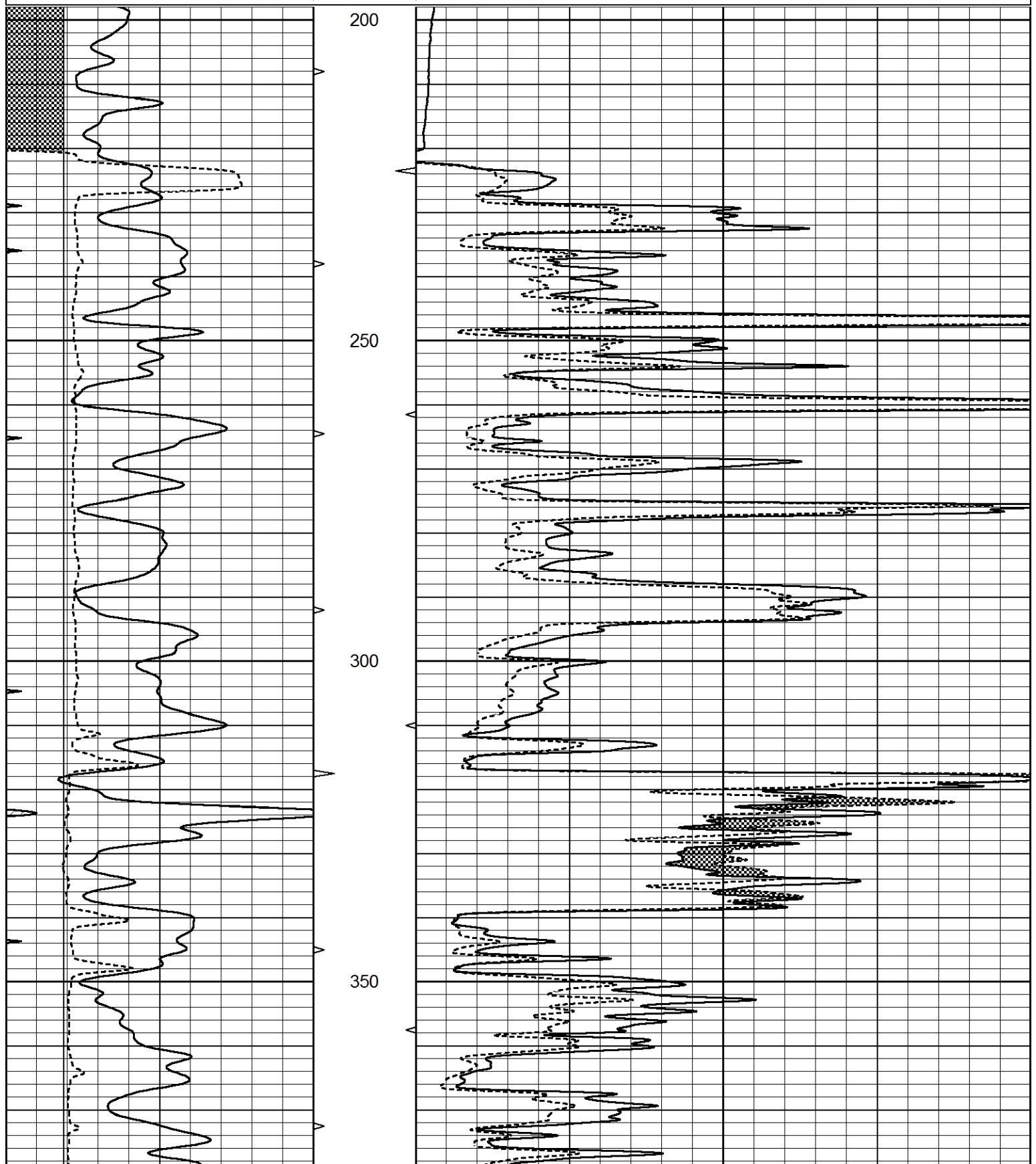
FROM MARION, KANSAS GO SOUTH ON US-77 FOR 14 MILES TO NW 160TH STREET,
EAST ON NW 160TH STREET FOR 3/4 MILE, SOUTH INTO

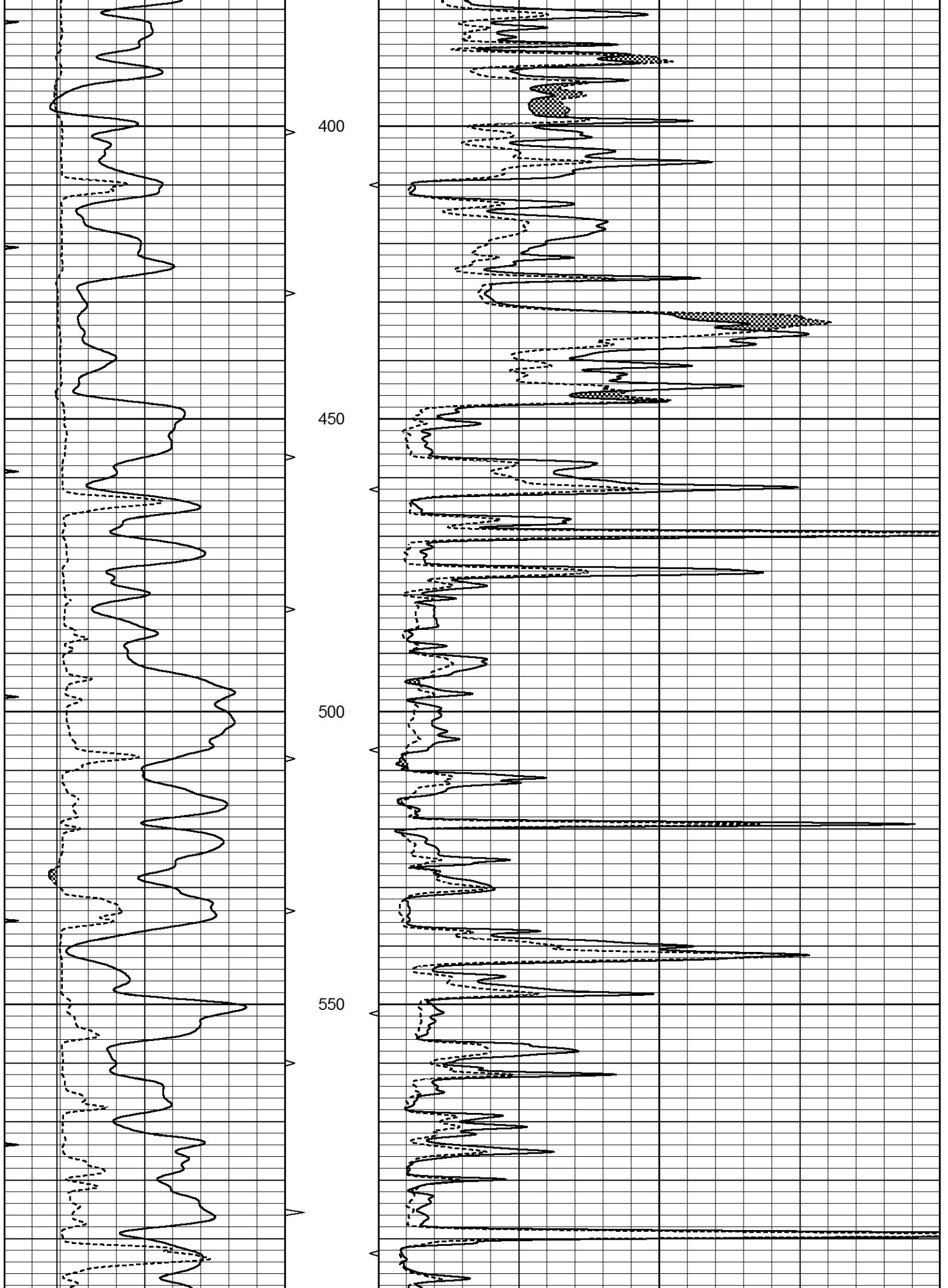


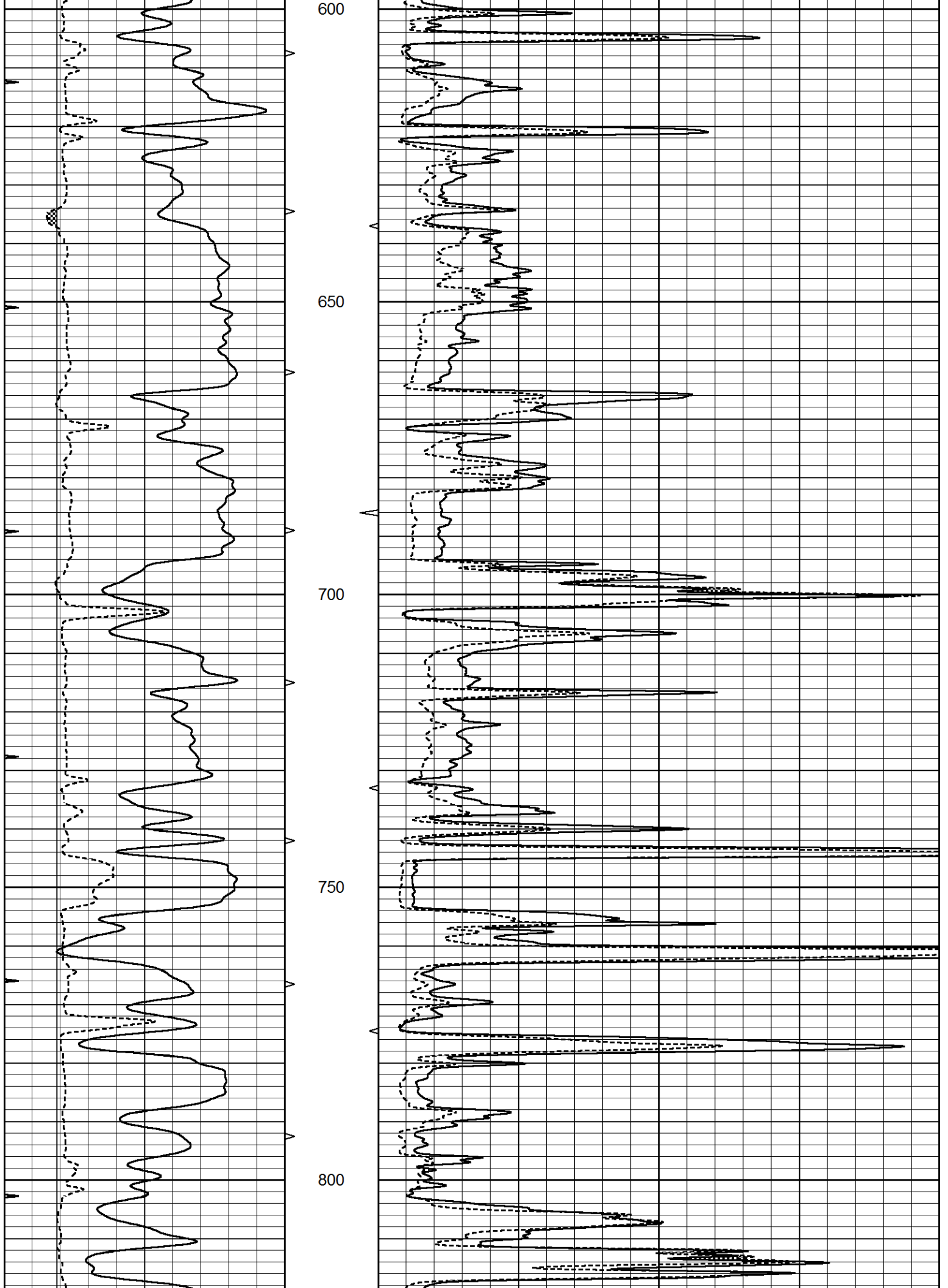
MAIN SECTION

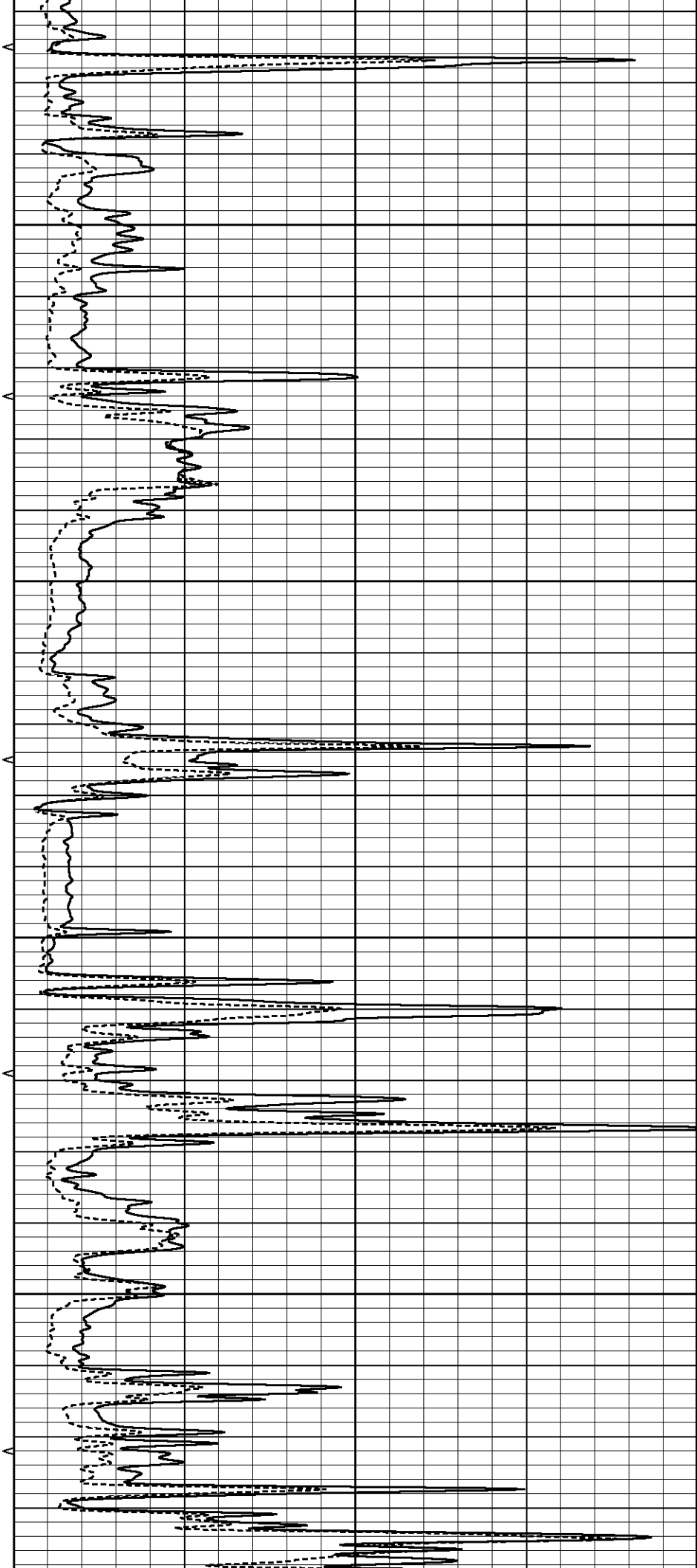
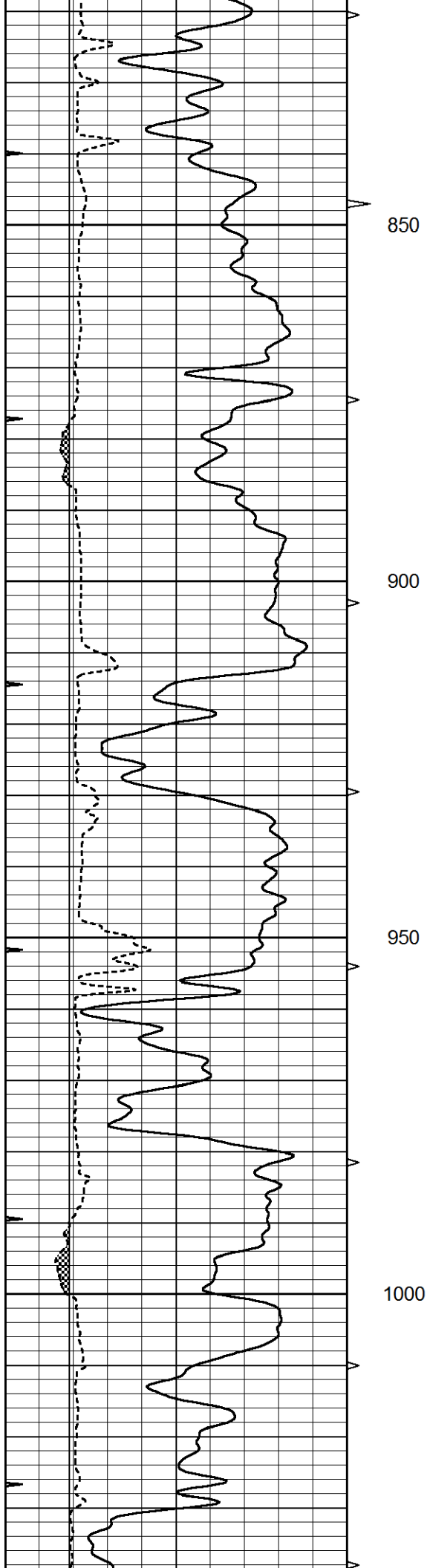
Database File 7587pe.db
 Dataset Pathname pass11.2
 Presentation Format _micro
 Dataset Creation Sat May 20 10:35:48 2023
 Charted by Depth in Feet scaled 1:240

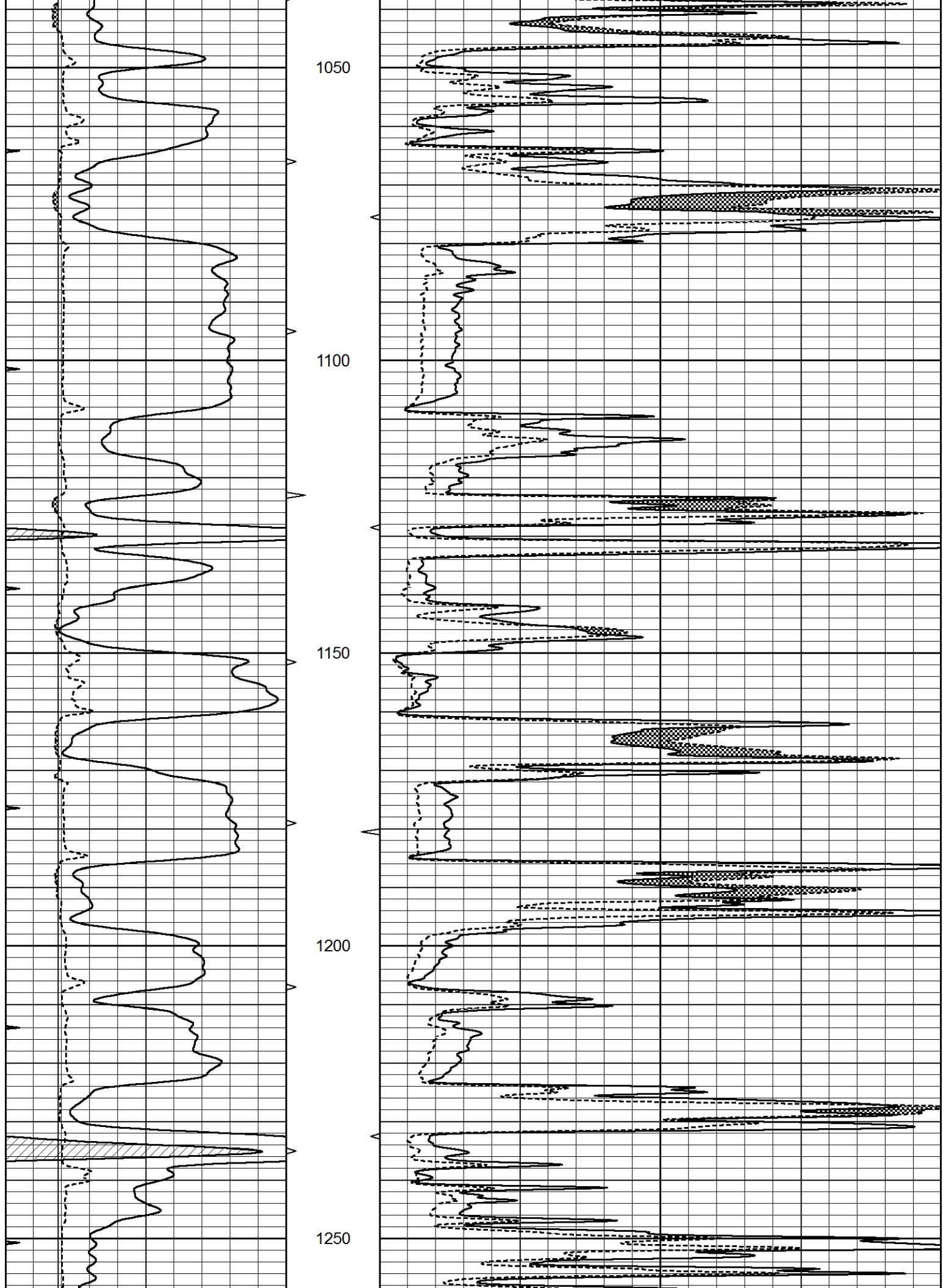
0	GAMMA RAY (GAPI)	150	ABHV	0	MEL1.5 (Ohm-m)	40
6	CALIPER (in)	16	10 (ft3)	0	MEL2.0 (Ohm-m)	40
0	MINMK	20	TBHV			
			0 (ft3)	10		

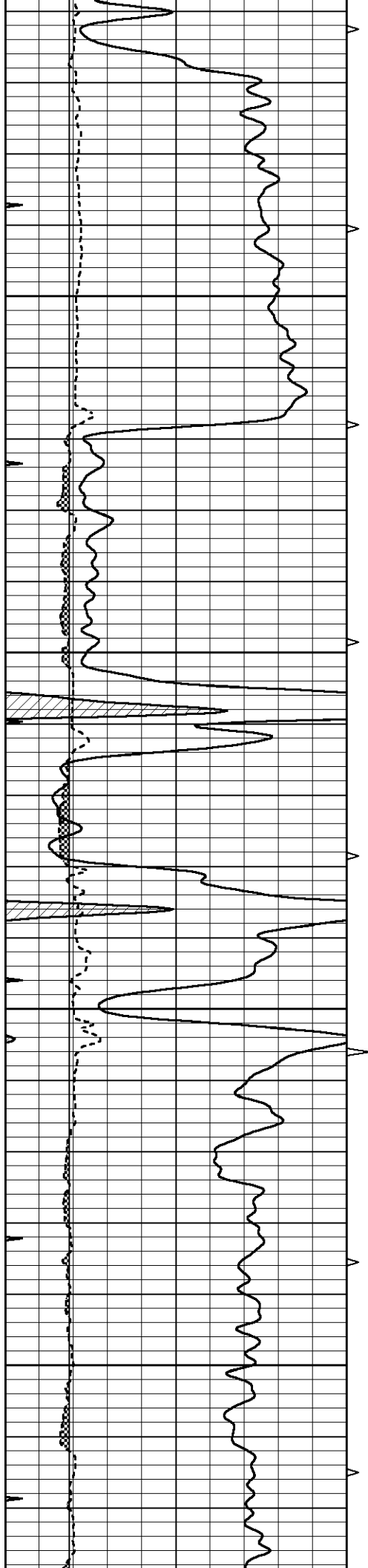










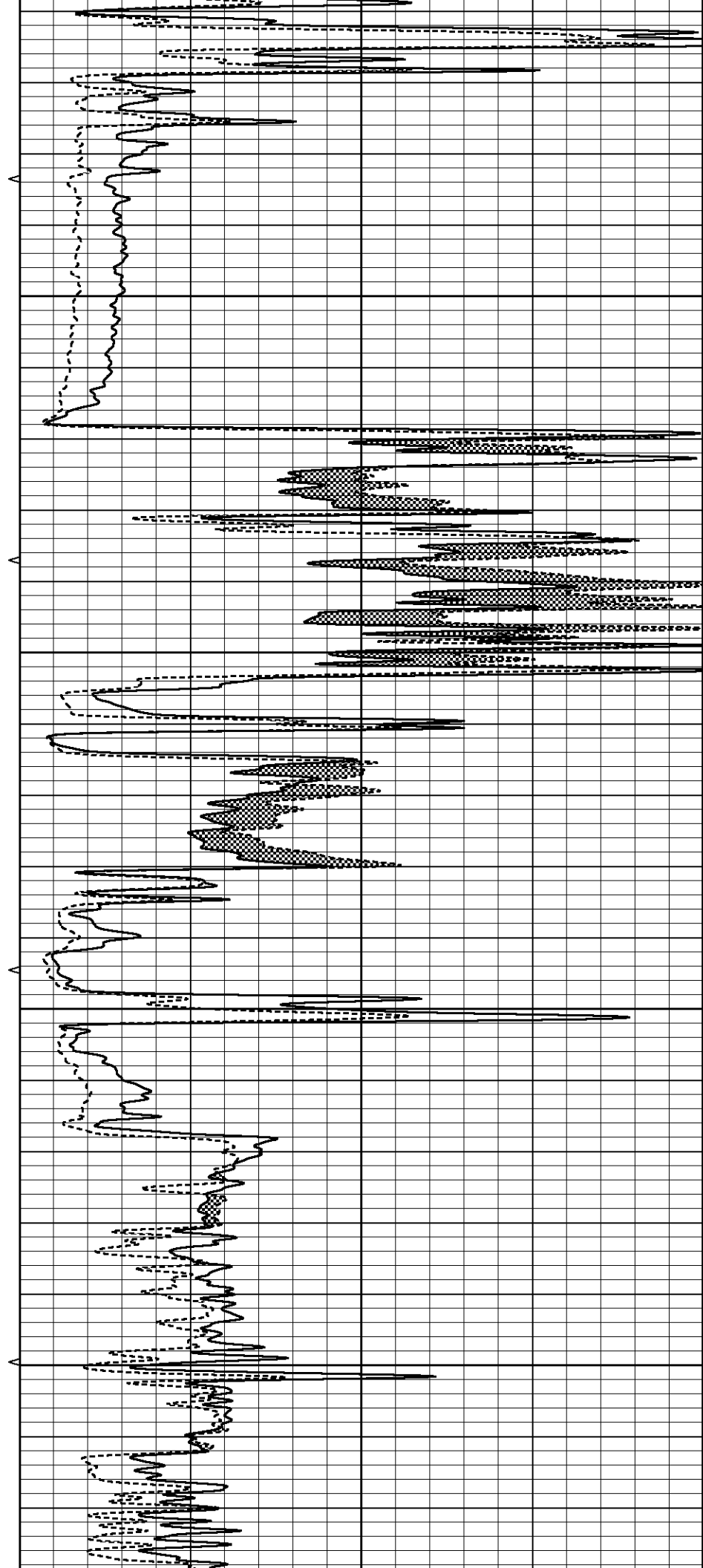


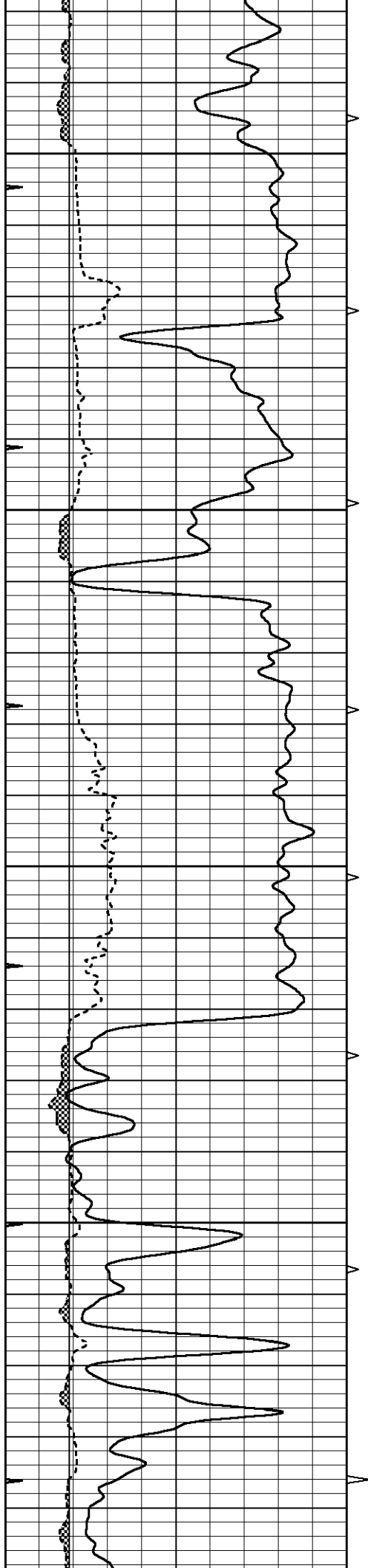
1300

1350

1400

1450



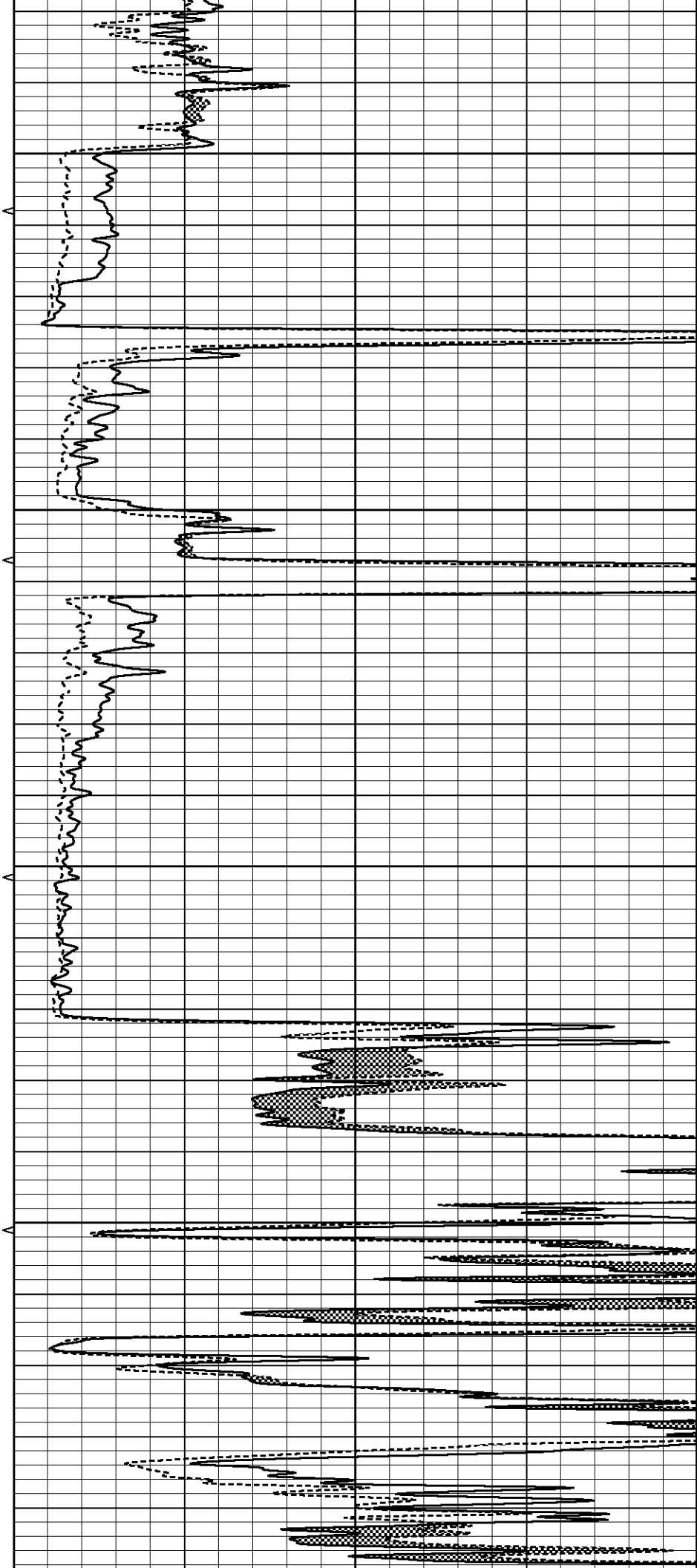


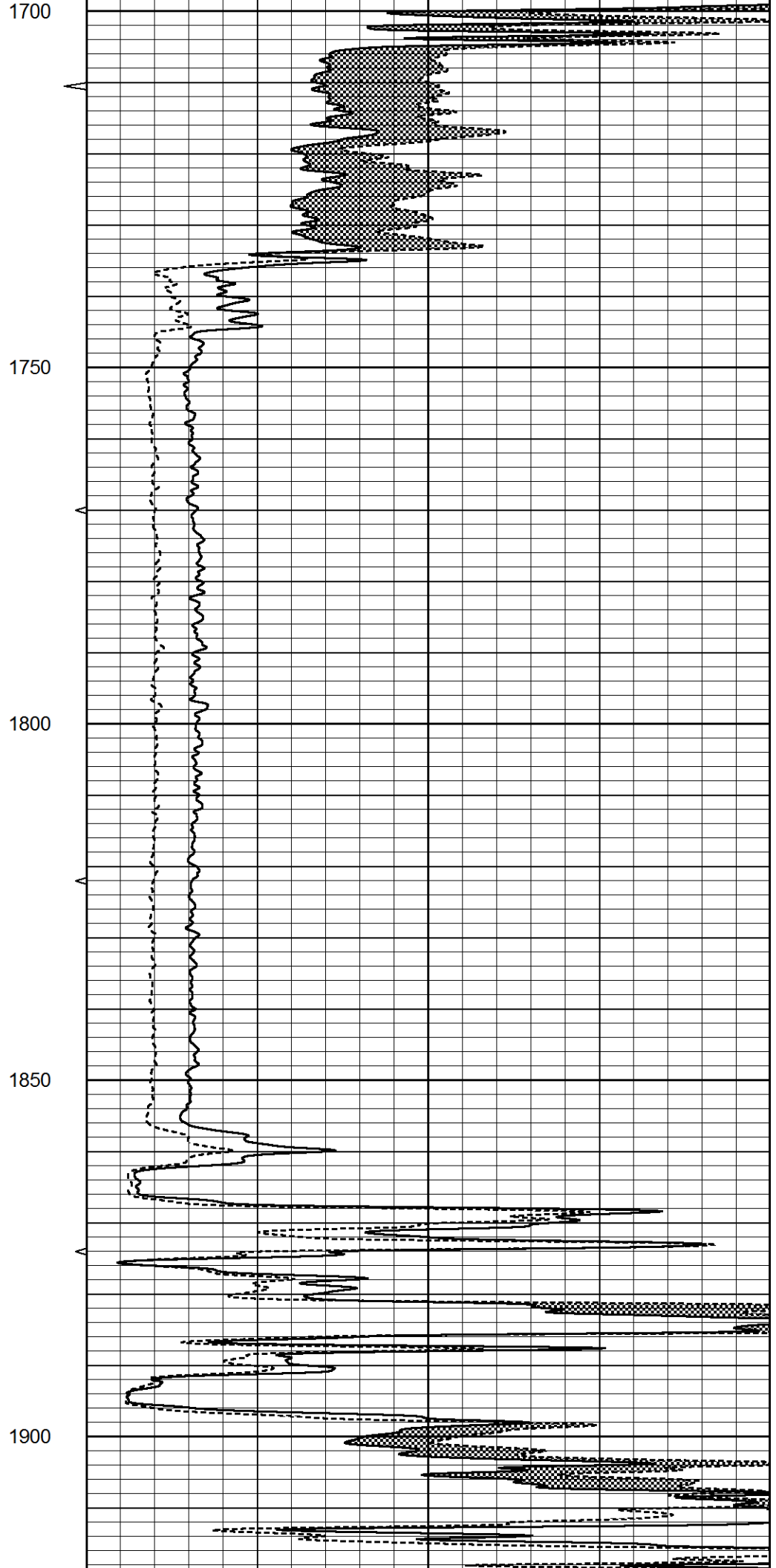
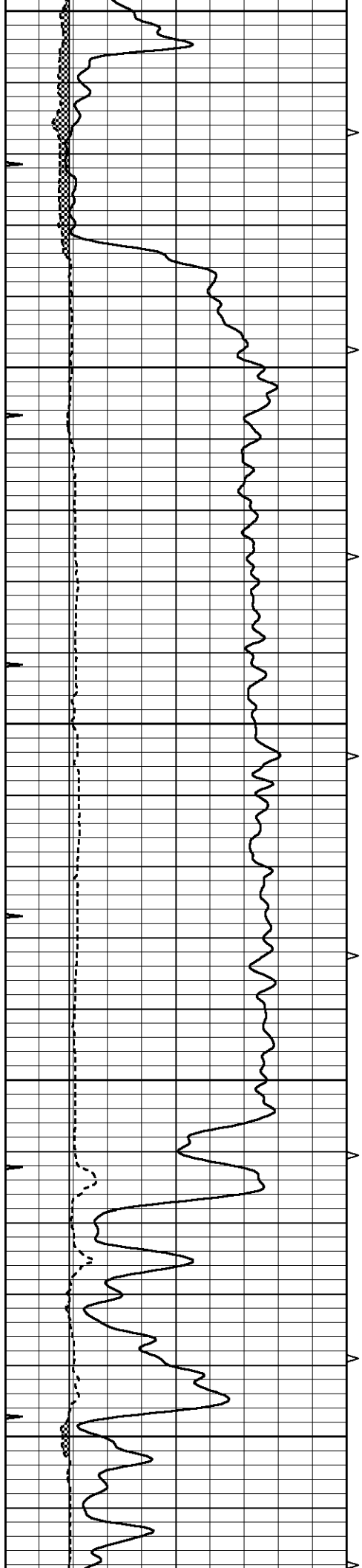
1500

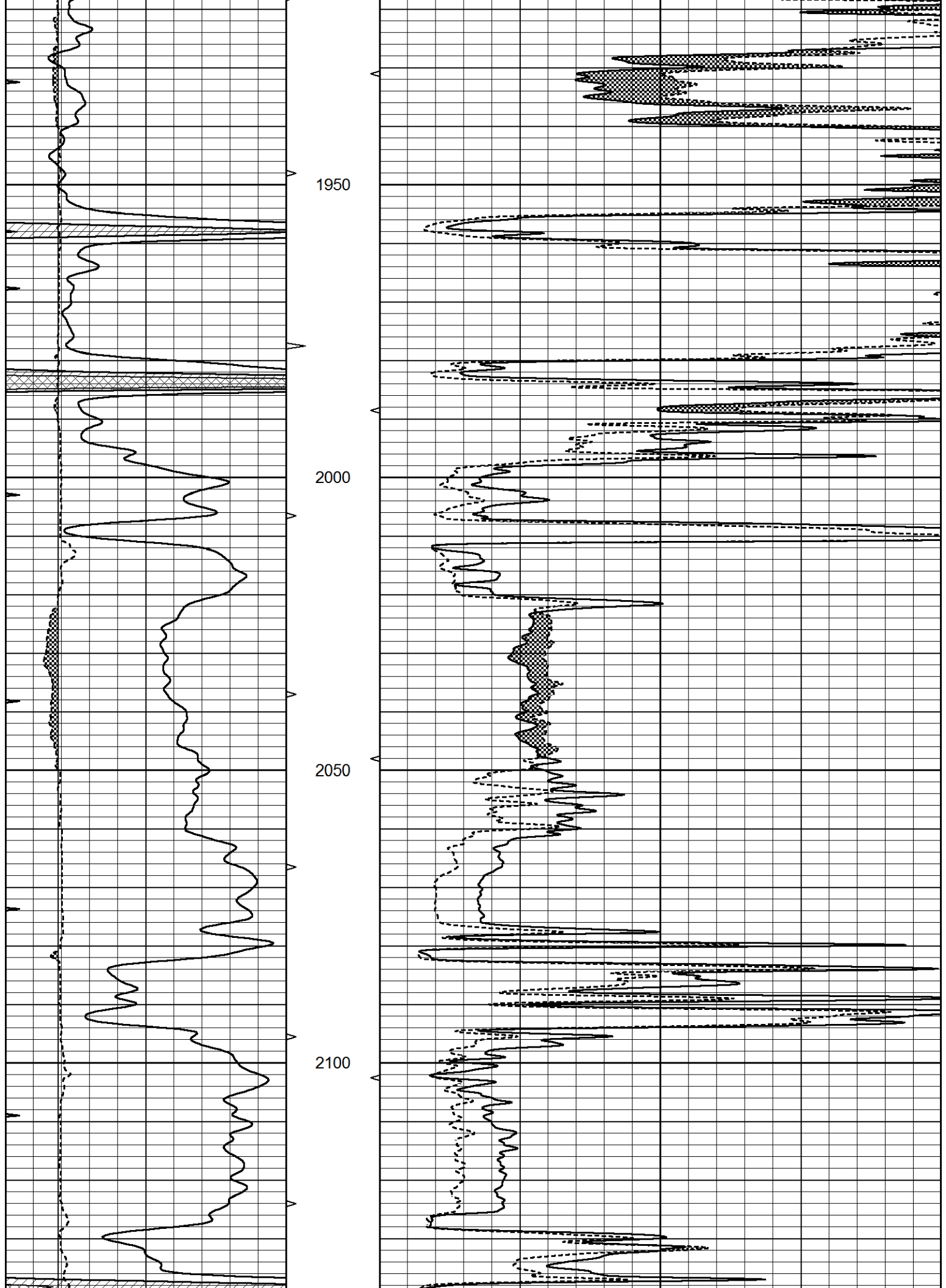
1550

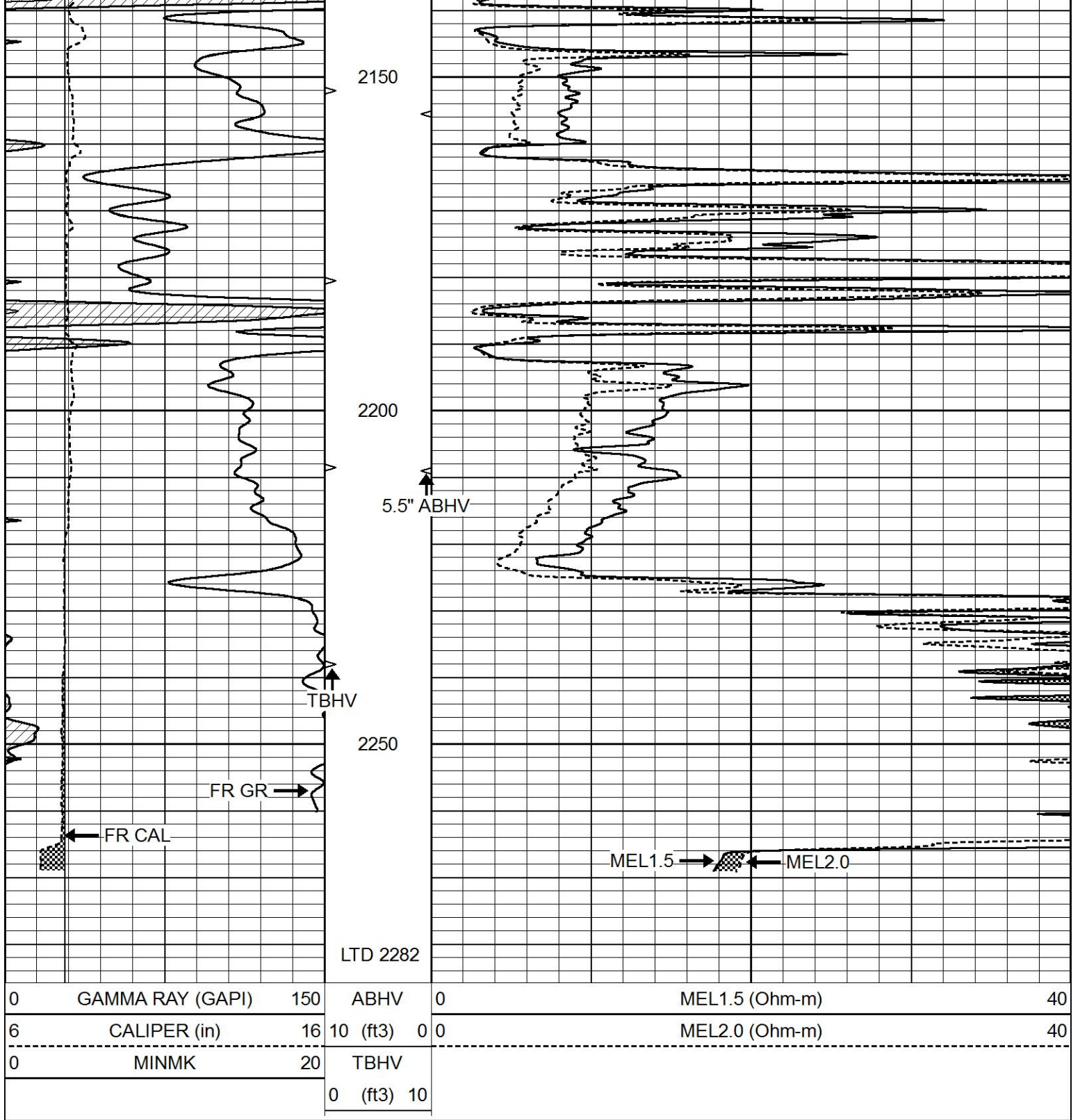
1600

1650









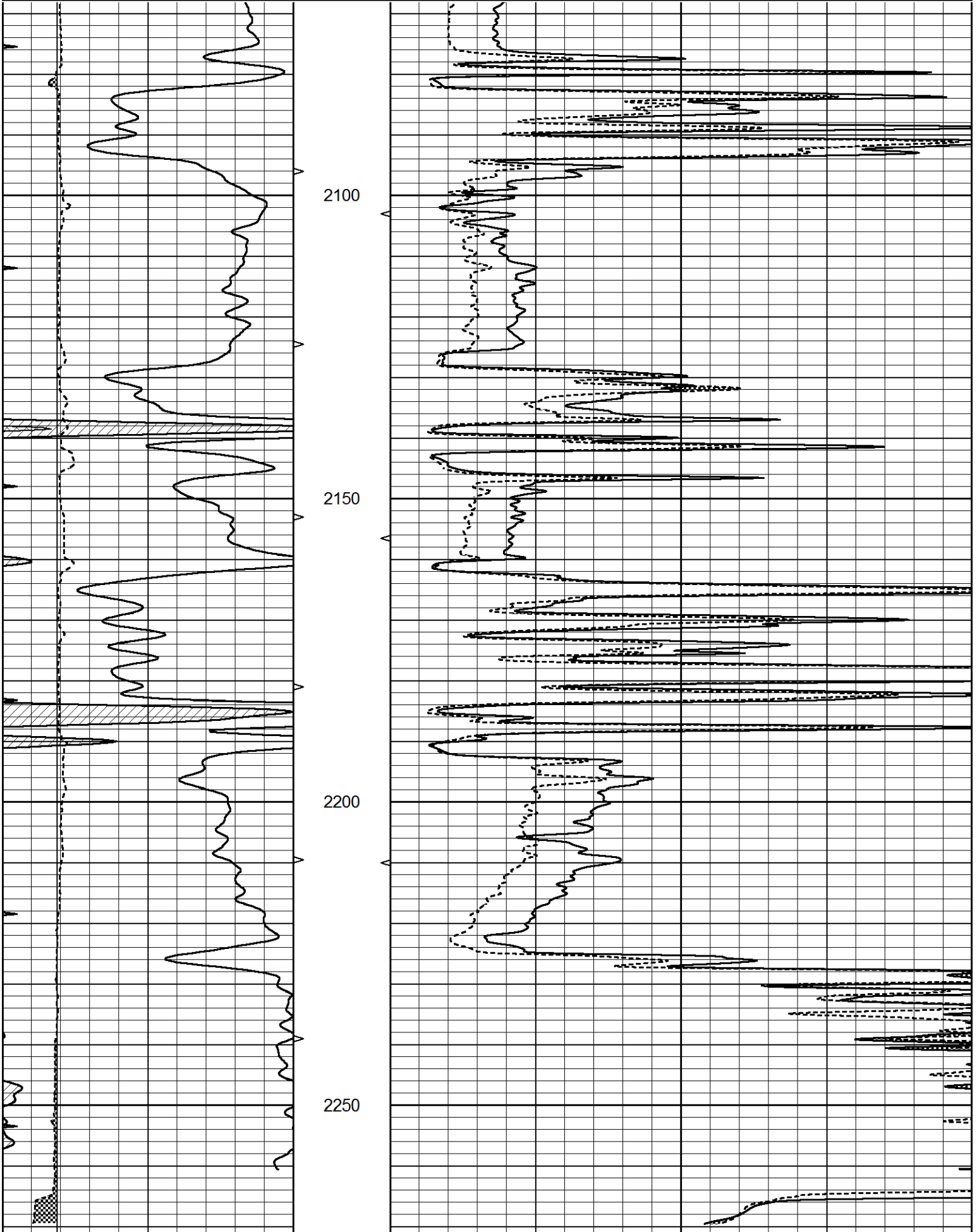
REPEAT SECTION

Database File 7587pe.db
 Dataset Pathname pass10.2
 Presentation Format _micro
 Dataset Creation Sat May 20 10:39:40 2023
 Charted by Depth in Feet scaled 1:240

0	GAMMA RAY (GAPI)	150	ABHV	0	MEL1.5 (Ohm-m)	40
6	CALIPER (in)	16	10 (ft3)	0	MEL2.0 (Ohm-m)	40

0 CALIPER (in) 16 10 (ft3) 0 0
0 MINMK 20 TBHV
0 (ft3) 10

MELZ.V (Unit-in) 40



0	GAMMA RAY (GAPI)	150	ABHV	0	MEL1.5 (Ohm-m)	40
6	CALIPER (in)	16	10 (ft3)	0	MEL2.0 (Ohm-m)	40
0	MINMK	20	TBHV			
			0 (ft3)	10		

Calibration Report

Database File 7587pe.db
Dataset Pathname pass11.2
Dataset Creation Sat May 20 10:35:48 2023

MICRO_USR Calibration Report

Serial Number: 070911
Tool Model: ProbeL
Performed: Thu Jan 19 05:57:00 2023

Caliper Calibration: Gain=4.500 Offset=0.280
References Low Cal High Cal
8.000 14.000
Readings 1.451 3.049

1.5" Calibration: Gain=30.000 Offset=-0.500
References Low Cal High Cal
0.000 20.000
Readings 0.004 0.843

2" Calibration: Gain=35.000 Offset=-0.500
References Low Cal High Cal
0.000 20.000
Readings 0.021 0.810

Microlog Calibration Report

Serial-Model: 070911-ProbeL
Performed: Sat May 14 04:48:25 2022

	Readings			References			Results	
	Zero	Cal		Zero	Cal		m	b
Normal	0.0002	0.4836	V	0.0000	10.0000	Ohm-m	20.6908	-0.0051
Inverse	0.0018	0.6297	V	0.0000	10.0000	Ohm-m	15.9263	-0.0282
Caliper	0.0000	1.0000	V	0.0000	1.0000	in	1.0000	0.0000

Gamma Ray Calibration Report

Serial Number: 070558
Tool Model: Probe1
Performed: Fri Mar 31 09:04:23 2023
Calibrator Value: 1.0 GAPI
Background Reading: 0.0 cps
Calibrator Reading: 1.0 cps
Sensitivity: 0.2700 GAPI/cps