



MICRO LOG

Company PICKRELL DRILLING COMPANY, INC.
Well CURTIS "S" #1
Field PRAIRIE RIDGE NORTHWEST
County LANE State KANSAS

Location: API #: 15-101-22689-0000
330' FNL & 840' FWL
W2 - NE - NW - NW
SEC 1 TWP 16S RGE 27W
Permanent Datum GROUND LEVEL Elevation 2559
Log Measured From KELLY BUSHING 7' A.G.L
Drilling Measured From KELLY BUSHING
Other Services
CDL/CNL
PE/DIL
Elevation
K.B. 2566
D.F. 2564
G.L. 2559

Table with columns: Date, Run Number, Depth Driller, Depth Logger, Bottom Logged Interval, Top Log Interval, Casing Driller, Casing Logger, Bit Size, Type Fluid in Hole, Density / Viscosity, PH / Fluid Loss, Source of Sample, Rim @ Meas. Temp, Rmt @ Meas. Temp, Rmc @ Meas. Temp, Source of Rmf / Rmc, Rim @ BHT, Time Circulation Stopped, Time Logger on Bottom, Maximum Recorded Temperature, Equipment Number, Location, Recorded By, Witnessed By.

<<< Fold Here >>>

All interpretations are opinions based on inferences from electrical or other measurements and we cannot and do not guarantee the accuracy or correctness of any interpretation, and we shall not, except in the case of gross or willful negligence on our part, be liable or responsible for any loss, costs, damages, or expenses incurred or sustained by anyone resulting from any interpretation made by any of our officers, agents or employees. These interpretations are also subject to our general terms and conditions set out in our current Price Schedule.

Comments

THANK YOU FOR USING ELI WIRELINE SERVICES, HAYS, KS. (785) 628-6395

DIRECTIONS:

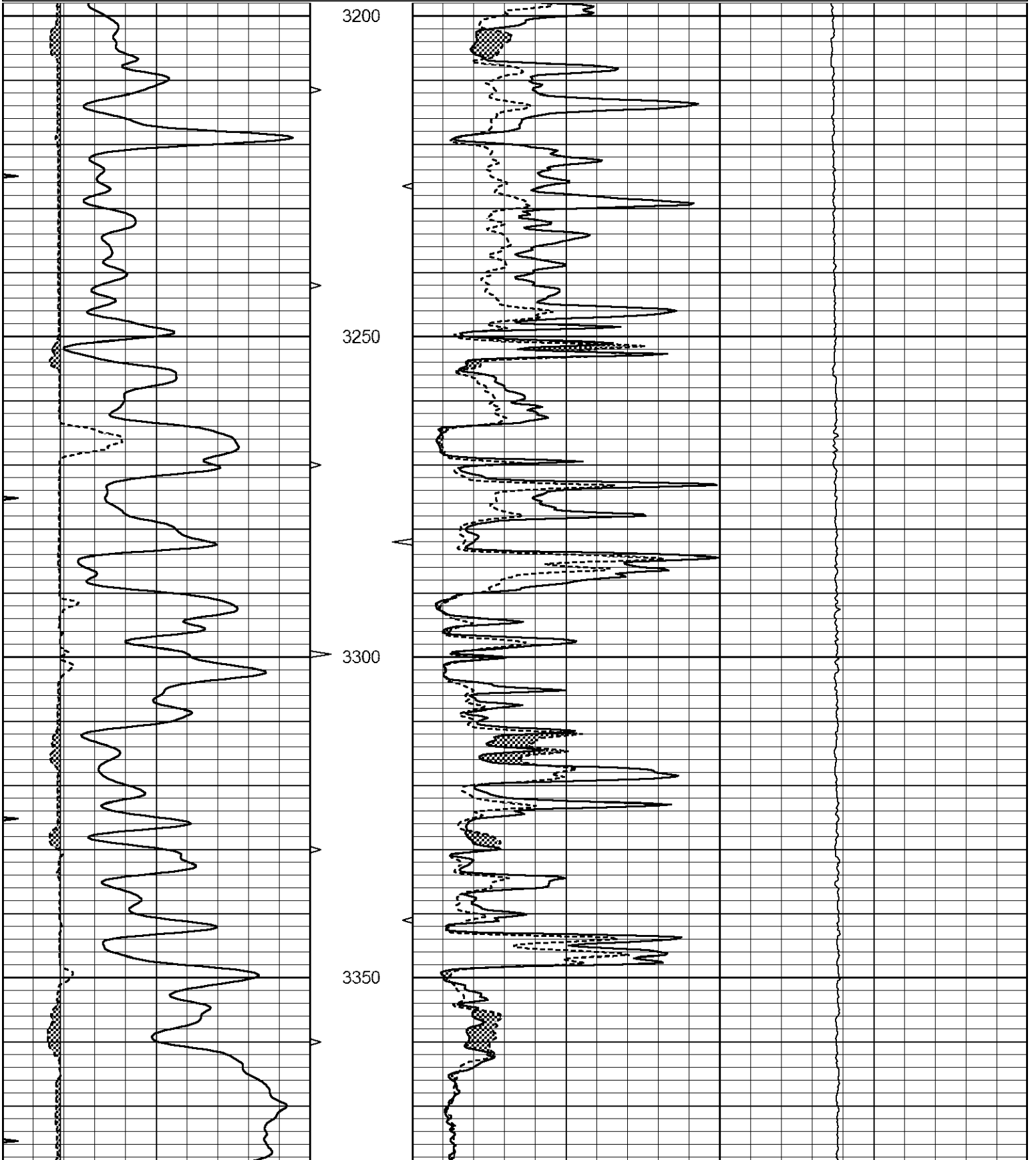
FROM UTICA, KANSAS GO WEST 3 MILES TO ROAD 'A', 4.5 MILES NORTH TO GOVE CO. ROAD 'A', 2 MILES WEST TO OLD FARMSTEAD, FOLLOW TRAIL WEST THROUGH TREES

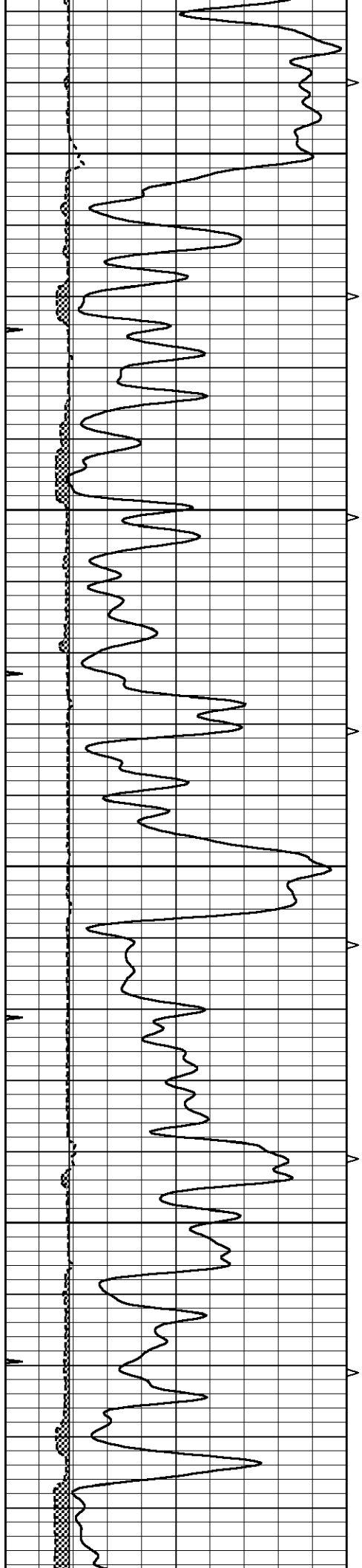


MAIN SECTION

Database File 7719pe.db
 Dataset Pathname pass7.4
 Presentation Format _micro
 Dataset Creation Tue Sep 05 02:33:11 2023
 Charted by Depth in Feet scaled 1:240

0	GAMMA RAY (GAPI)	150	ABHV	0	MEL1.5 (Ohm-m)	40
6	CALIPER (in)	16	10 (ft3)	0	MEL2.0 (Ohm-m)	40
0	MINMK	20	TBHV	0	LTEN (lb)	5000
			0 (ft3)	10		



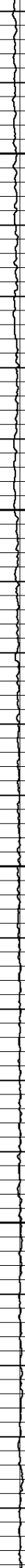
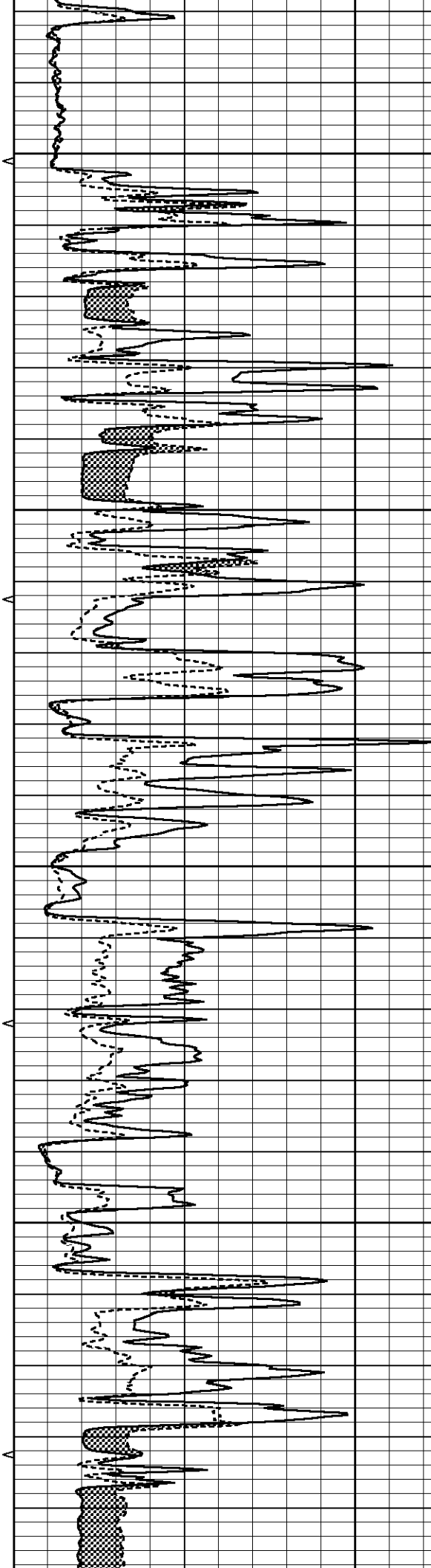


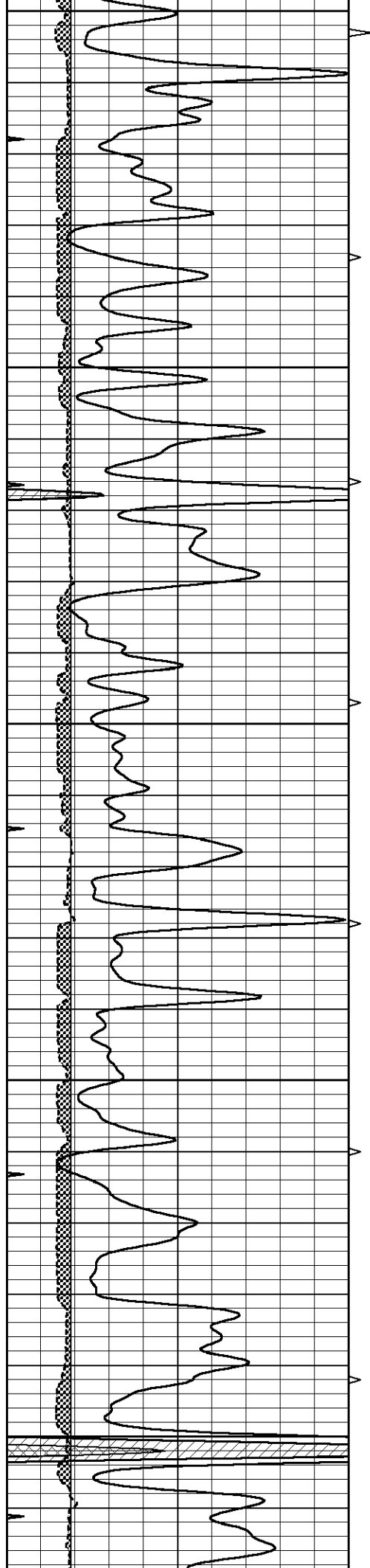
3400

3450

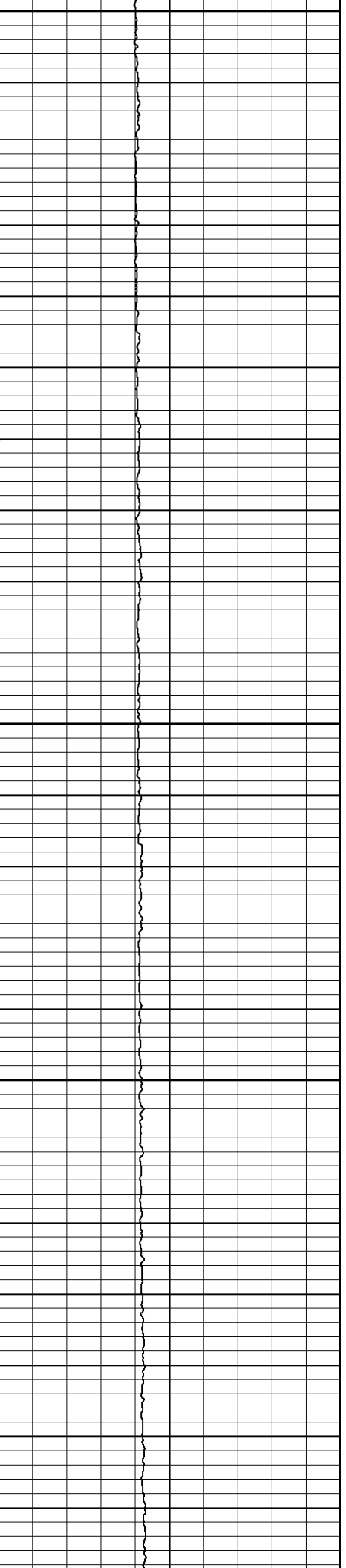
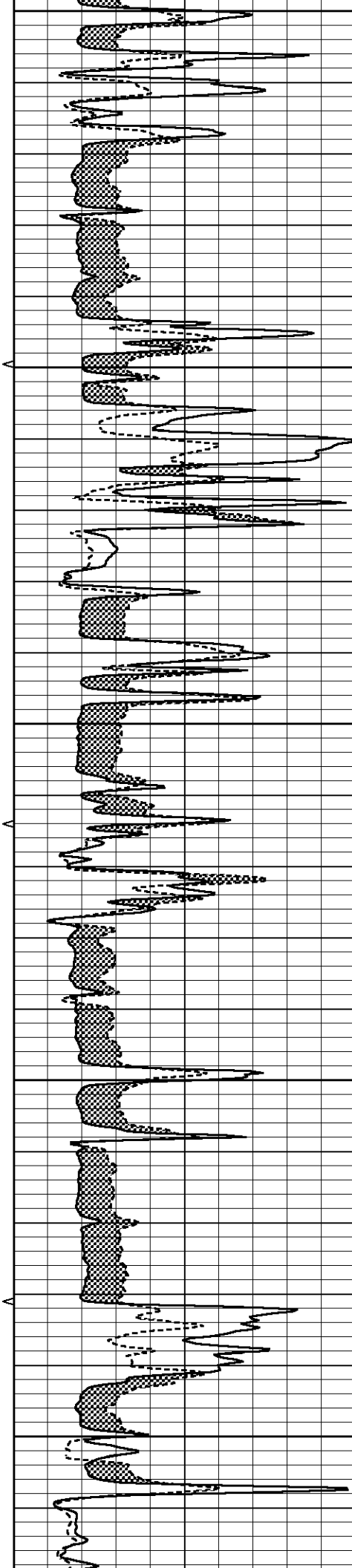
3500

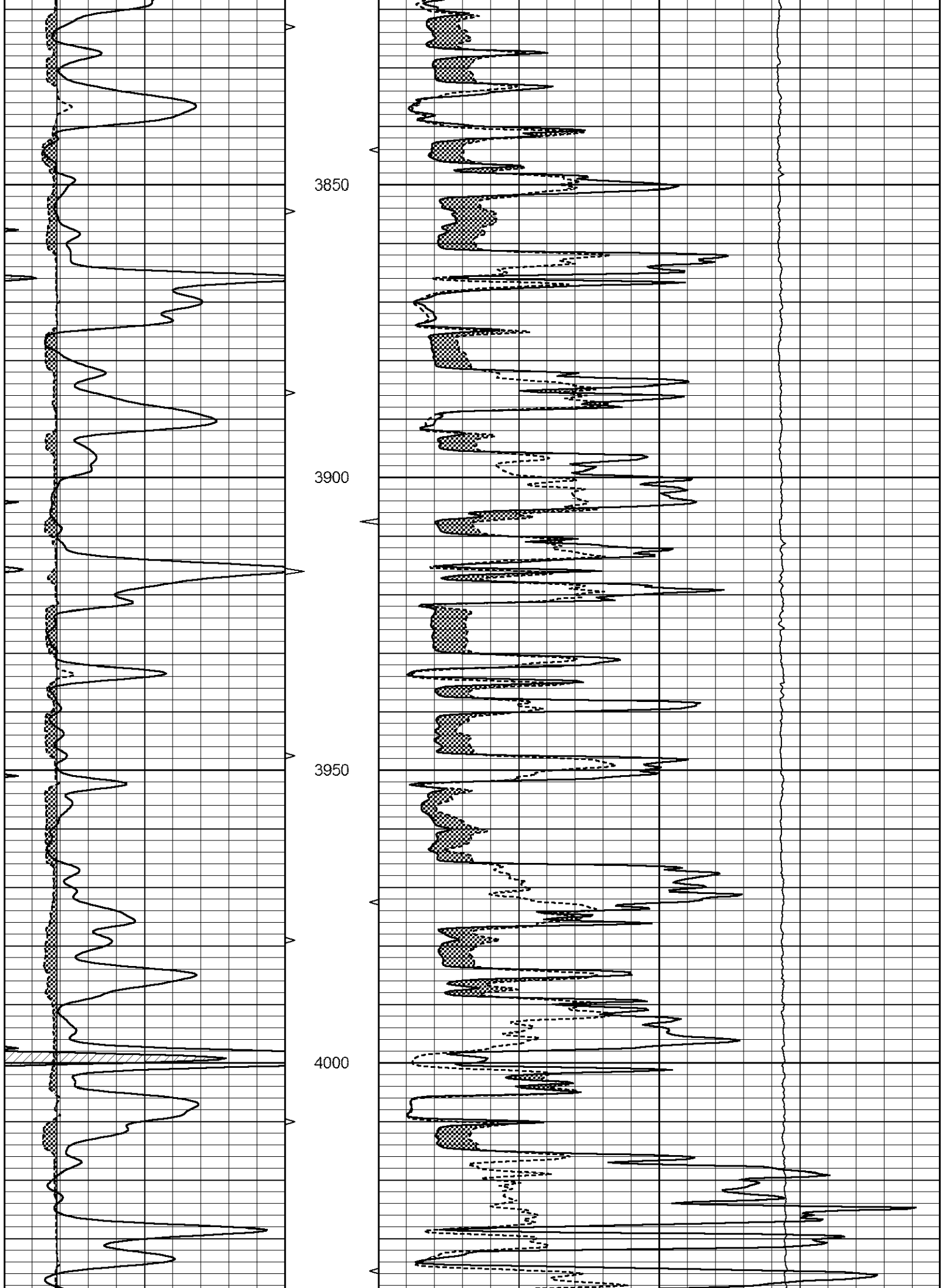
3550

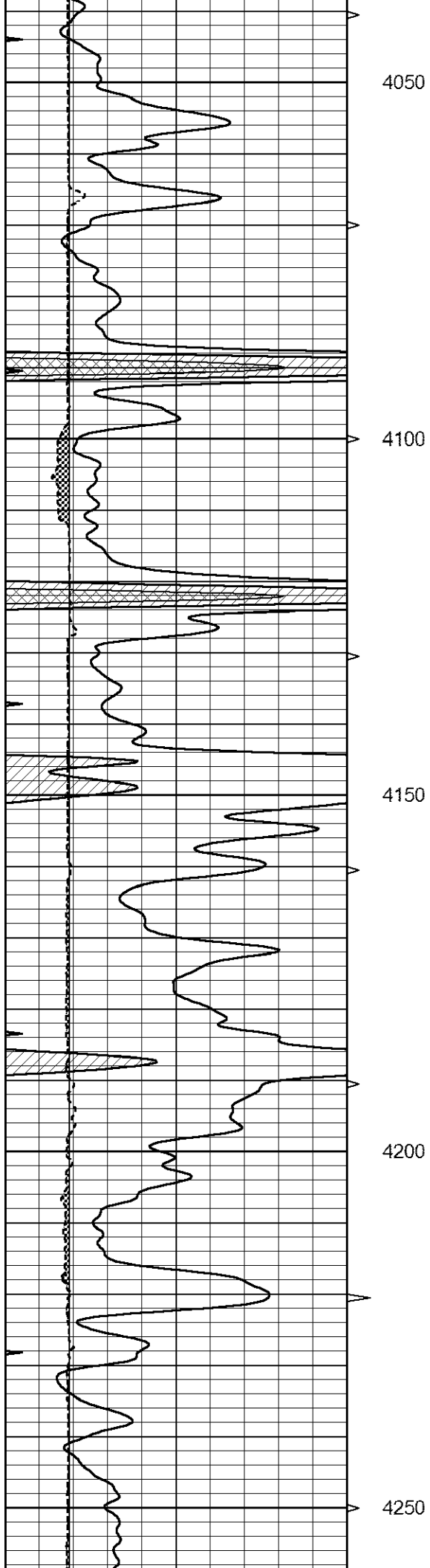




3600
3650
3700
3750
3800







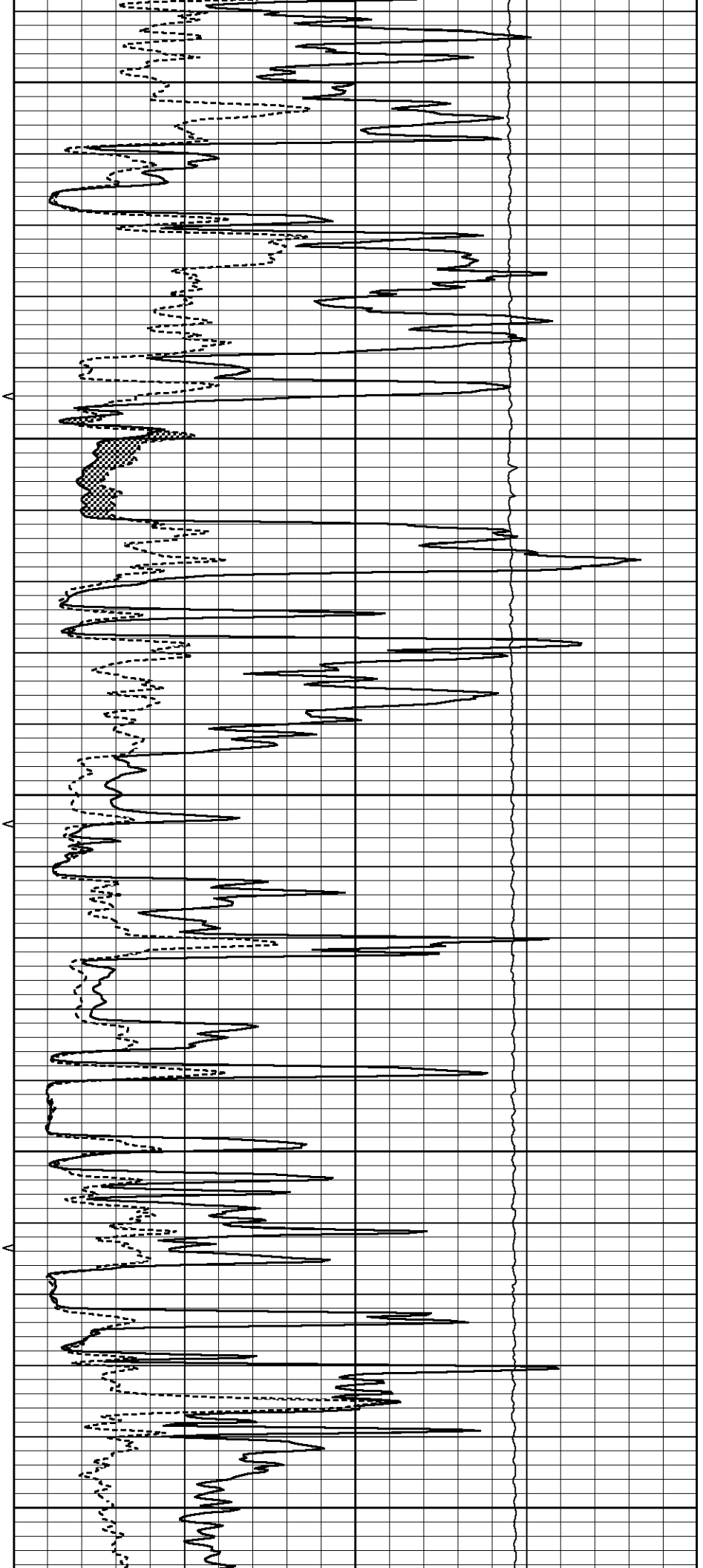
4050

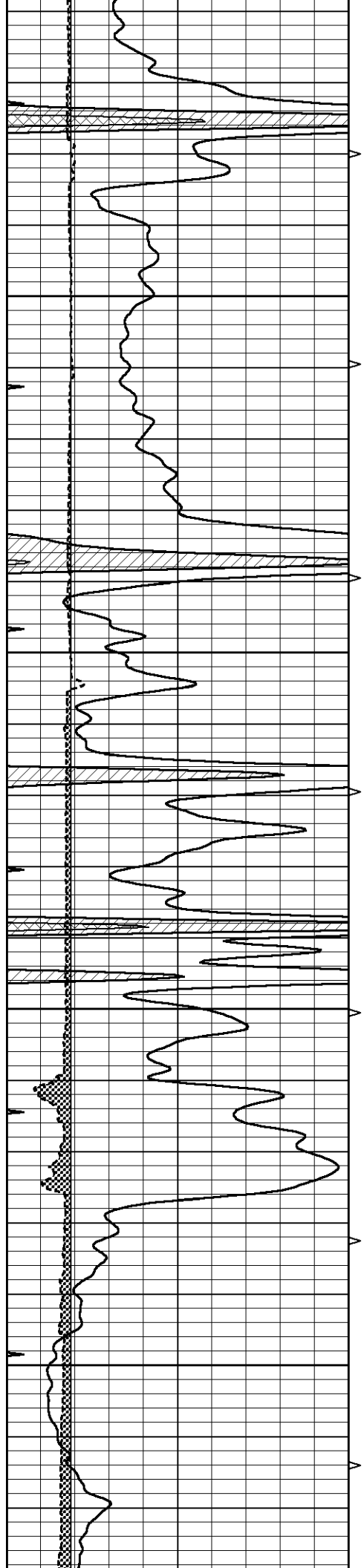
4100

4150

4200

4250





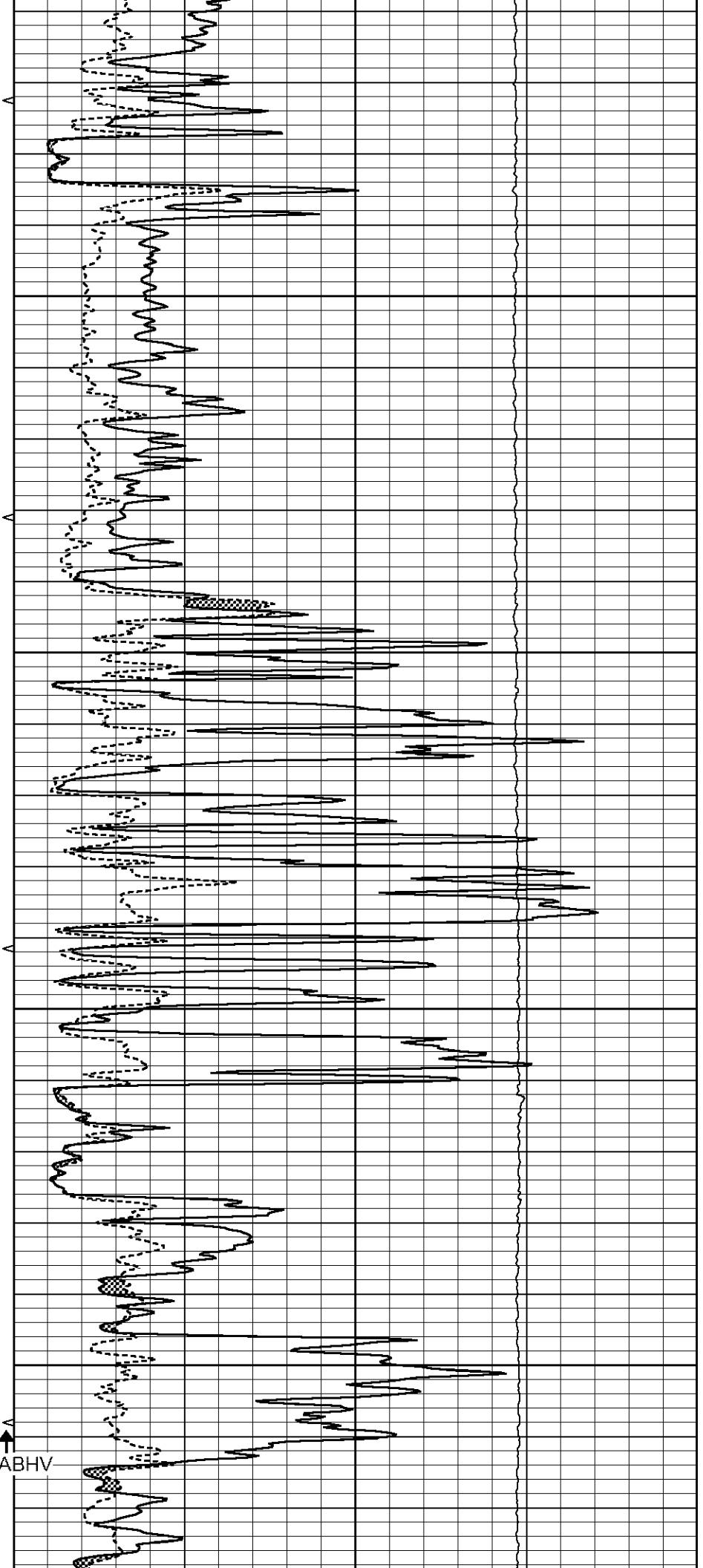
4300

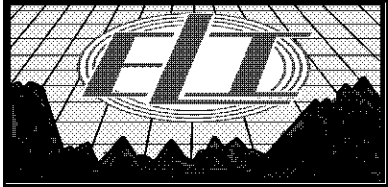
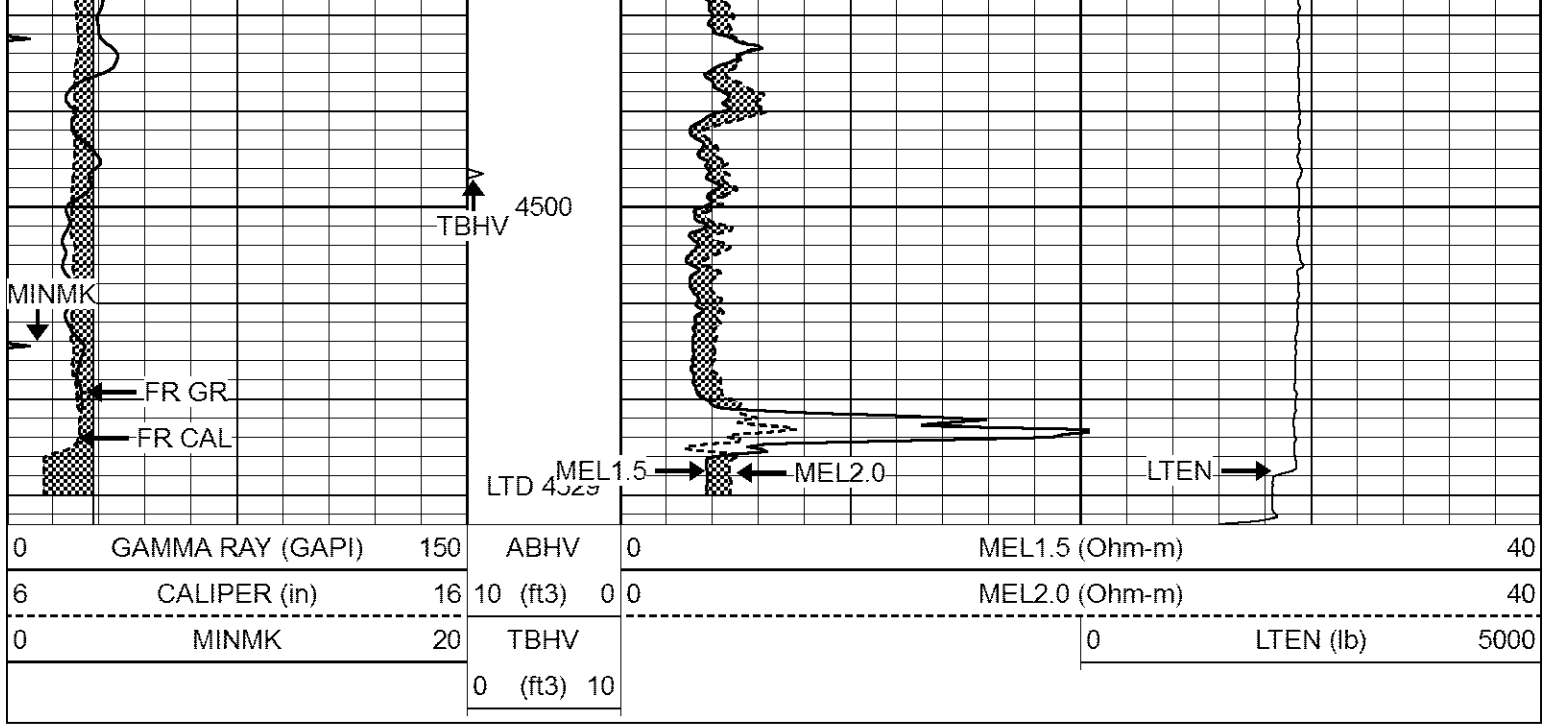
4350

4400

4450

5.5" ABHV

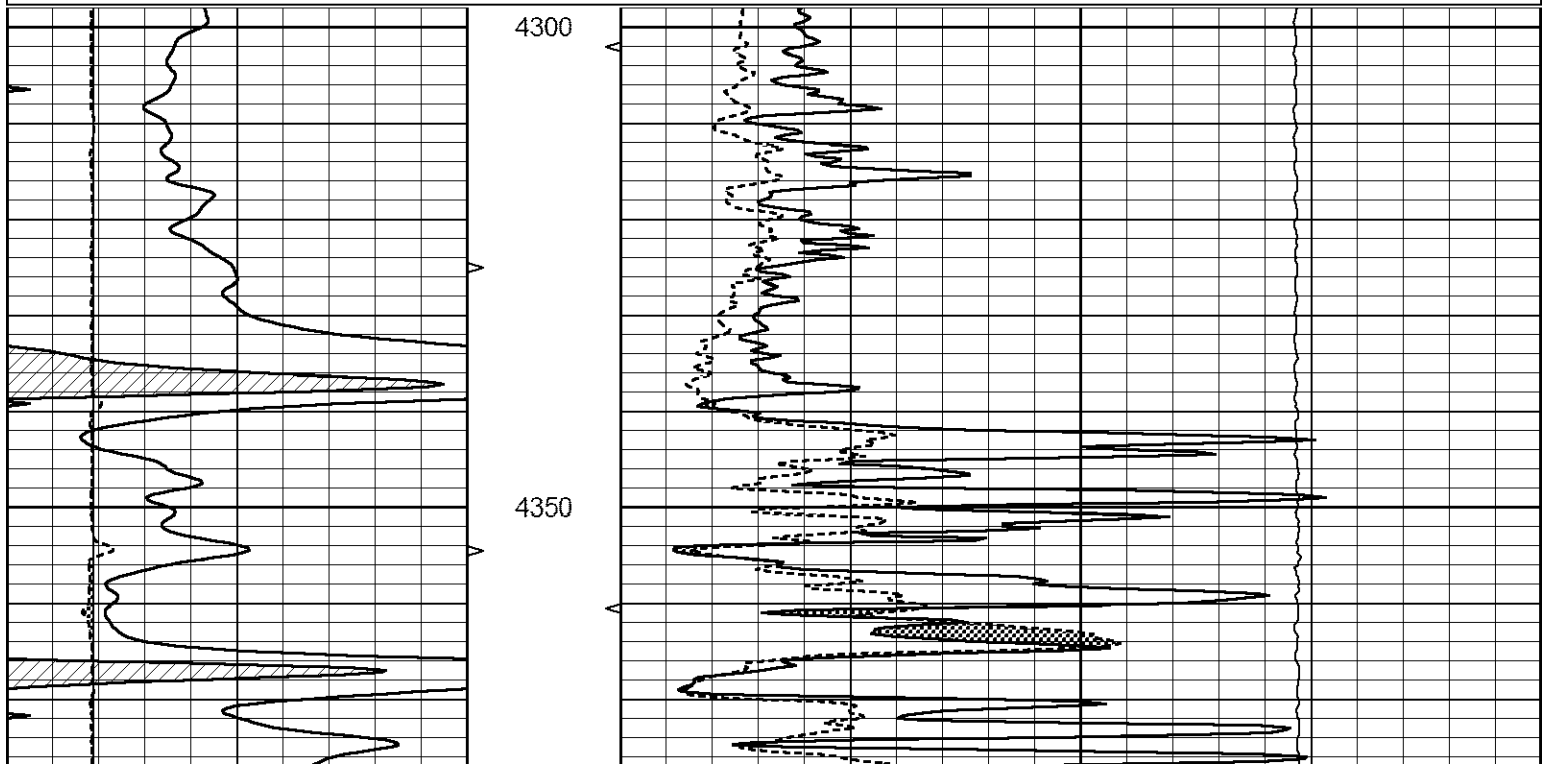


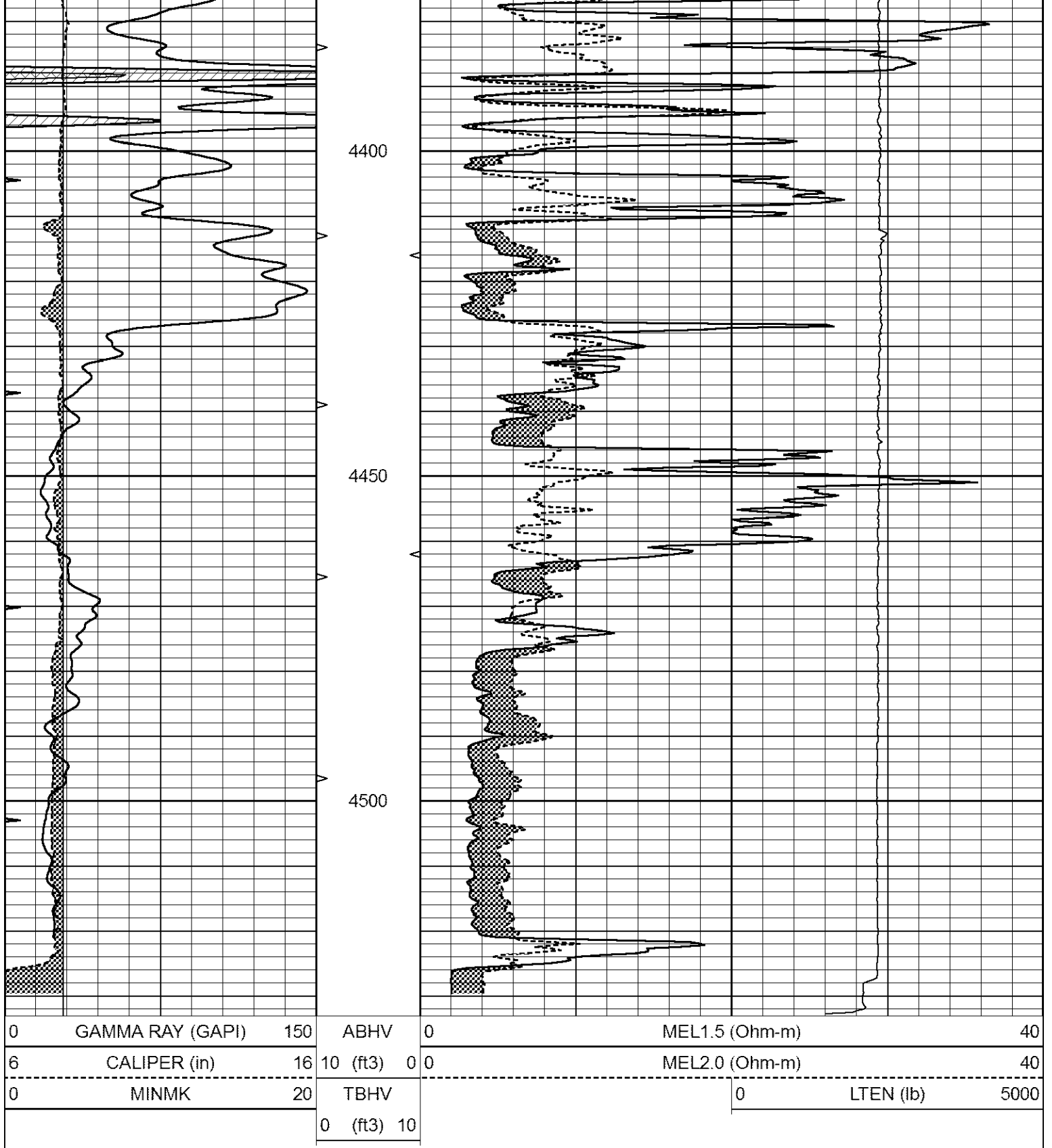


REPEAT SECTION

Database File 7719pe.db
 Dataset Pathname pass6RR
 Presentation Format _micro
 Dataset Creation Tue Sep 05 02:11:45 2023
 Charted by Depth in Feet scaled 1:240

0	GAMMA RAY (GAPI)	150	ABHV	0	MEL1.5 (Ohm-m)	40
6	CALIPER (in)	16	10 (ft3) 0	0	MEL2.0 (Ohm-m)	40
0	MINMK	20	TBHV		0	LTEN (lb) 5000
			0 (ft3) 10			





Calibration Report

Database File 7719pe.db
 Dataset Pathname pass7.4
 Dataset Creation Tue Sep 05 02:33:11 2023

MICRO_USR Calibration Report

Serial Number: 070910
 Tool Model: Probel
 Performed: Mon Aug 07 08:25:51 2023

Caliper Calibration:	Gain=7.212	Offset=2.000
References	Low Cal 8.000	High Cal 14.000
Readings	0.725	1.557

1.5" Calibration:	Gain=14.000	Offset=0.600
References	Low Cal 0.000	High Cal 20.000
Readings	0.004	1.335

2" Calibration:	Gain=24.000	Offset=0.000
References	Low Cal 0.000	High Cal 20.000
Readings	0.004	1.029

Microlog Calibration Report

Serial-Model: Performed:	070910-ProbeL (Not Performed)
-----------------------------	----------------------------------

	Readings			References			Results	
	Zero	Cal		Zero	Cal		m	b
Normal	0.0000	1.0000	V	0.0000	1.0000	Ohm-m	1.0000	0.0000
Inverse	0.0000	1.0000	V	0.0000	1.0000	Ohm-m	1.0000	0.0000
Caliper	0.0000	1.0000	V	0.0000	1.0000	in	1.0000	0.0000

Gamma Ray Calibration Report

Serial Number:	070558
Tool Model:	Probe1
Performed:	Mon Jul 17 10:21:25 2023
Calibrator Value:	1.0 GAPI
Background Reading:	0.0 cps
Calibrator Reading:	1.0 cps
Sensitivity:	0.2900 GAPI/cps