



**COMPENSATED  
DENSITY/NEUTRON  
PE LOG**

Company PICKRELL DRILLING COMPANY, INC.  
Well CURTIS "S" #1  
Field PRAIRIE RIDGE NORTHWEST  
County LANE  
State KANSAS

Company PICKRELL DRILLING COMPANY, INC.  
Well CURTIS "S" #1  
Field PRAIRIE RIDGE NORTHWEST  
County LANE State KANSAS

Location: API #: 15-101-22689-0000  
330' FNL & 840' FWL  
W2 - NE - NW - NW  
SEC 1 TWP 16S RGE 27W  
Permanent Datum GROUND LEVEL Elevation 2559  
Log Measured From KELLY BUSHING 7' A.G.L  
Drilling Measured From KELLY BUSHING  
Other Services  
DILMEL  
Elevation  
K.B. 2566  
D.F. 2564  
G.L. 2559

Date	9/4/23		
Run Number	ONE		
Depth Driller	4530		
Depth Logger	4529		
Bottom Logged Interval	4505		
Top Log Interval	3200		
Casing Driller	8 5/8 @ 221		
Casing Logger	221		
Bit Size	7 7/8		
Type Fluid in Hole	CHEMICAL MUD	CHLORIDES 2.100 PPM	
Density / Viscosity	9.3/75		
PH / Fluid Loss	10.0/7.6		
Source of Sample	FLOWLINE		
Rm @ Meas. Temp	1.00 @ 82F		
Rmt @ Meas. Temp	.750 @ 82F		
Rmc @ Meas. Temp	1.20 @ 82F		
Source of Rmf / Rmc	MEASUREMENT		
Rm @ BHT	.678 @ 121F		
Time Circulation Stopped	2 HOURS		
Time Logger on Bottom	11:30 P.M.		
Maximum Recorded Temperature	121F		
Equipment Number	8916		
Location	HAYS, KANSAS		
Recorded By	COLE ROBBEN		
Witnessed By	AARON YOUNG		

<<< Fold Here >>>

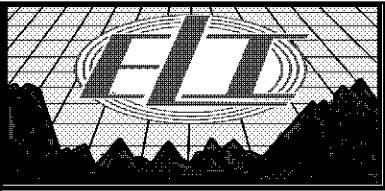
All interpretations are opinions based on inferences from electrical or other measurements and we cannot and do not guarantee the accuracy or correctness of any interpretation, and we shall not, except in the case of gross or willful negligence on our part, be liable or responsible for any loss, costs, damages, or expenses incurred or sustained by anyone resulting from any interpretation made by any of our officers, agents or employees. These interpretations are also subject to our general terms and conditions set out in our current Price Schedule.

**Comments**

THANK YOU FOR USING ELI WIRELINE SERVICES, HAYS, KS. ( 785 ) 628-6395

**DIRECTIONS:**

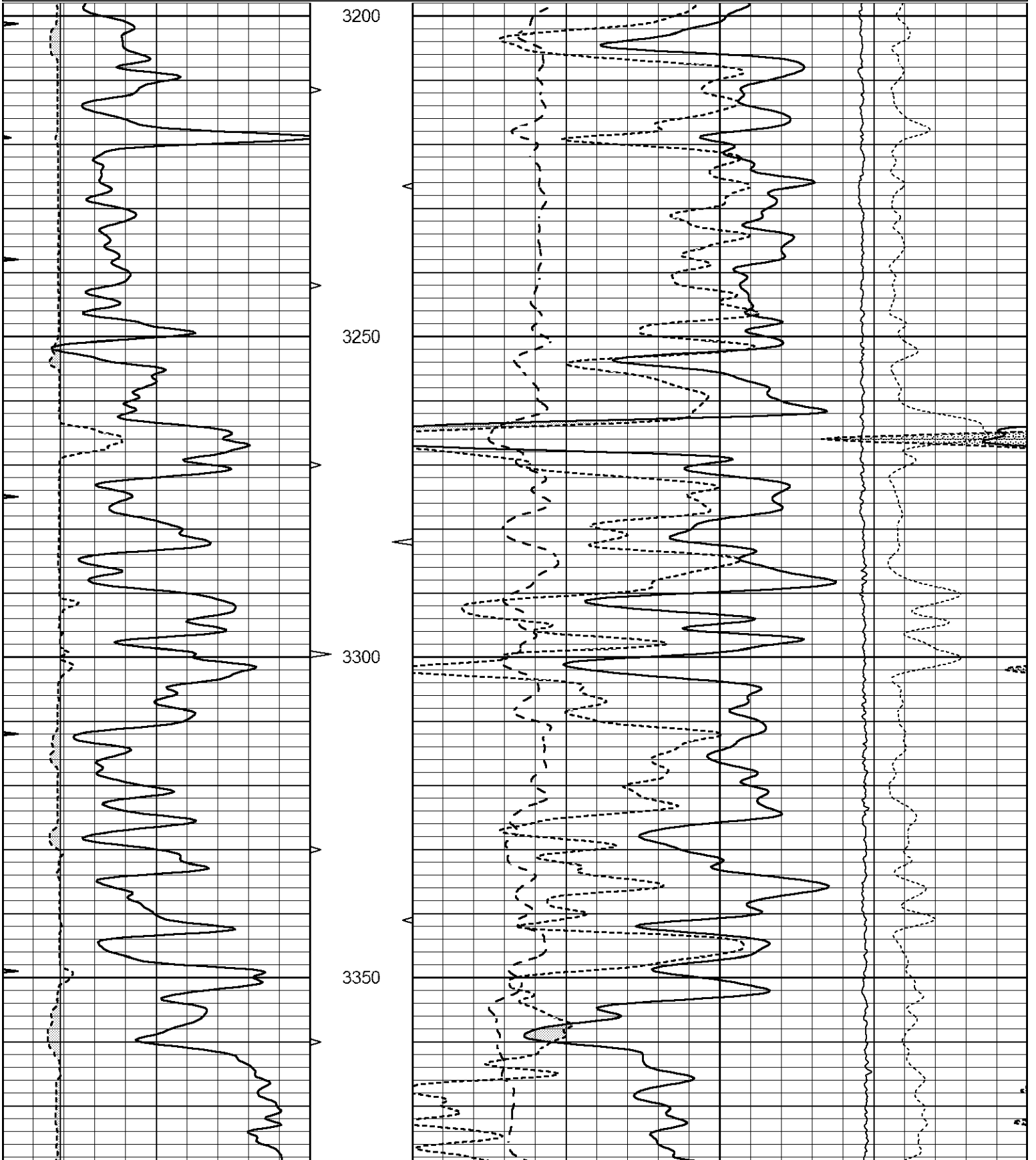
FROM UTICA, KANSAS GO WEST 3 MILES TO ROAD 'A', 4.5 MILES NORTH TO GOVE CO. ROAD 'A', 2 MILES WEST TO OLD FARMSTEAD, FOLLOW TRAIL WEST THROUGH TREES

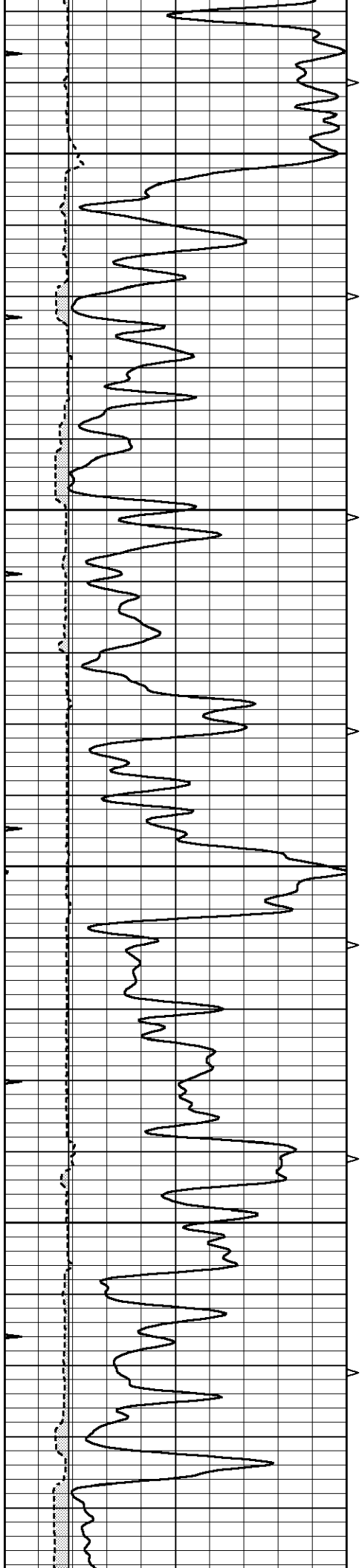


**MAIN SECTION**

Database File 7719pe.db  
 Dataset Pathname pass4PE  
 Presentation Format \_ldt\_neu  
 Dataset Creation Tue Sep 05 02:40:36 2023  
 Charted by Depth in Feet scaled 1:240

0	GAMMA RAY (GAPI)	150	ABHV	30	COMPENSATED DENSITY (pu)				-10
6	CALIPER (in)	16	10 (ft3)	0	COMPENSATED NEUTRON (pu)				-10
0	MINMK	20	TBHV	0	PE	10	-0.25	CORRECTION (g/cc)	0.25
			0 (ft3)	10			0	LTEN (lb)	5000



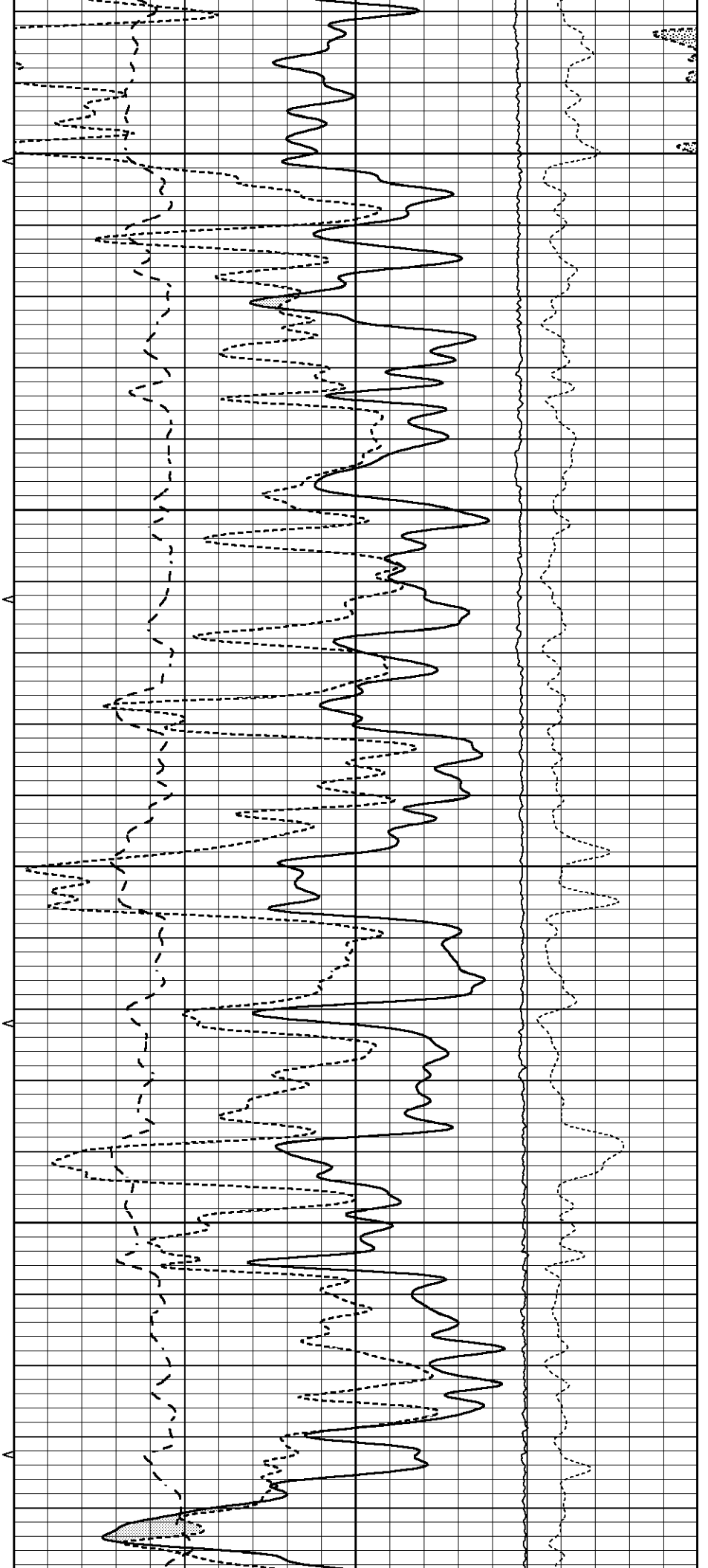


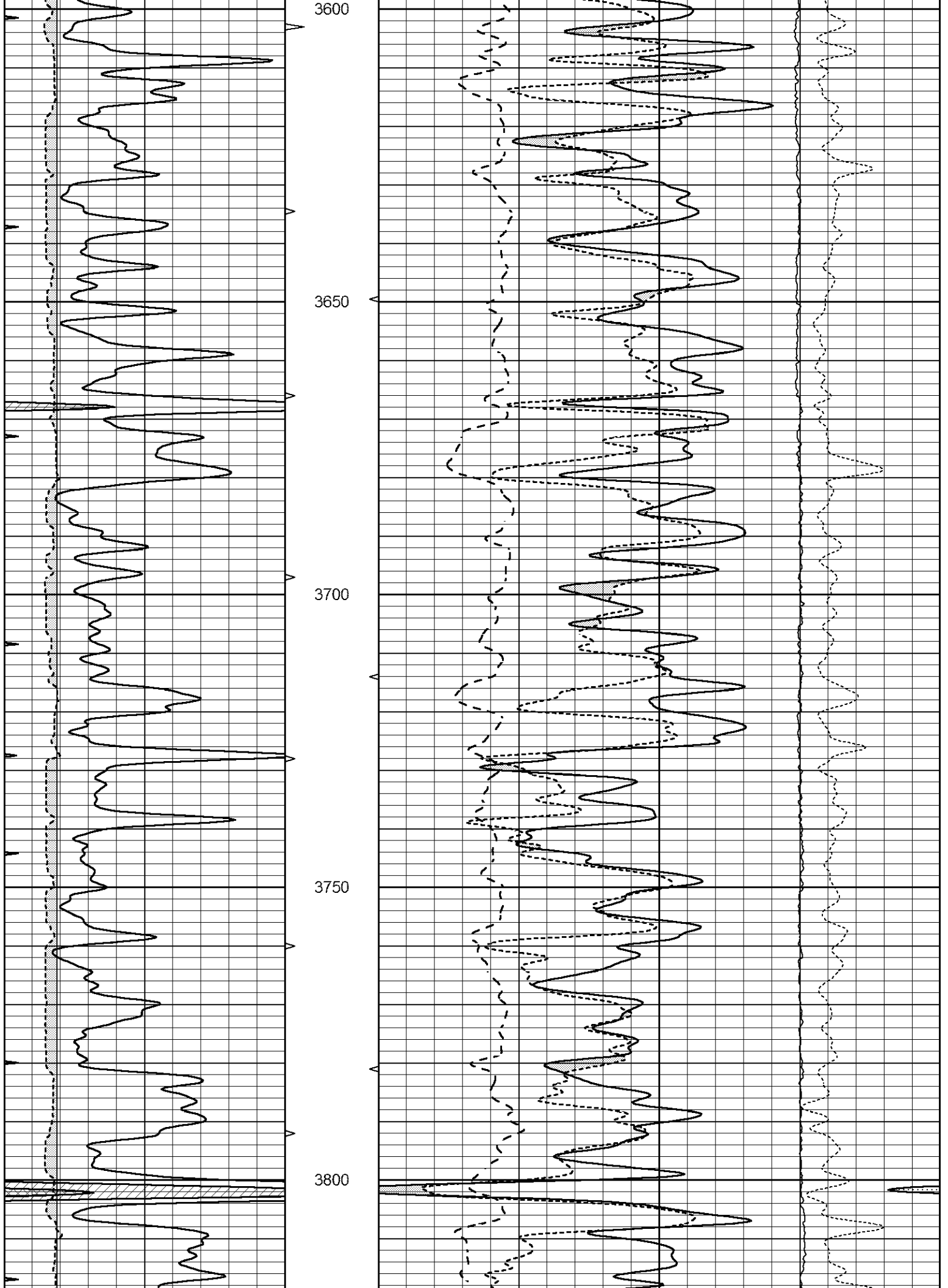
3400

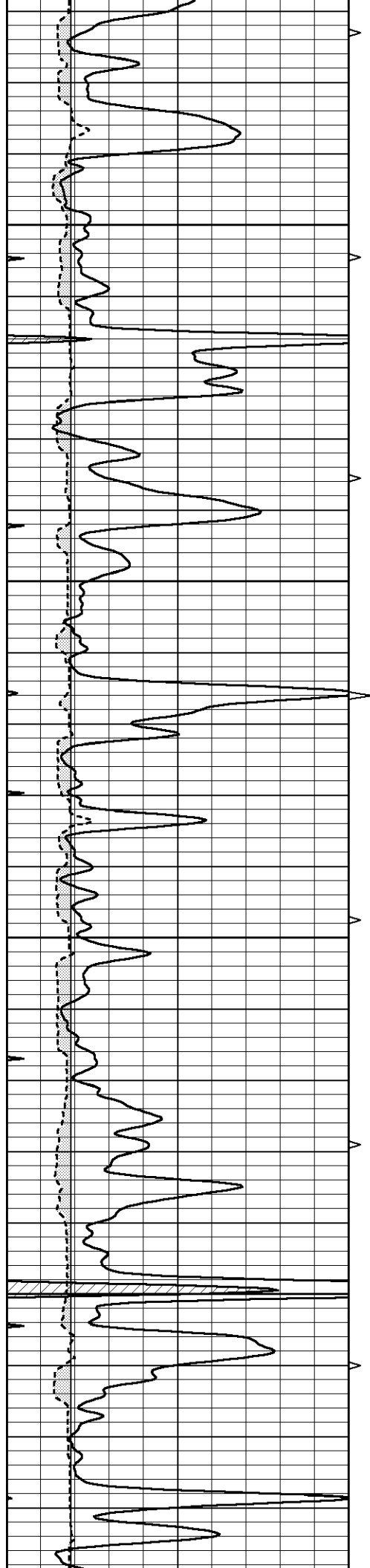
3450

3500

3550





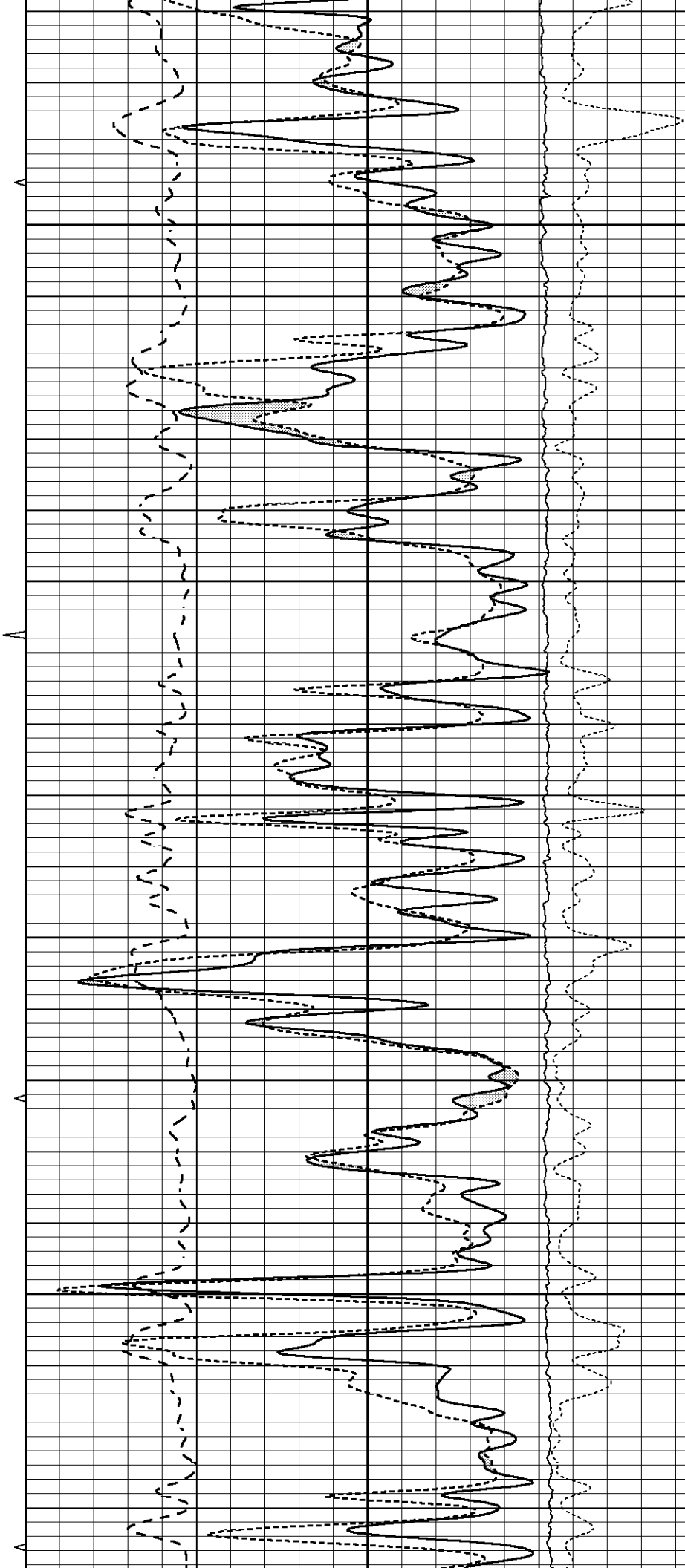


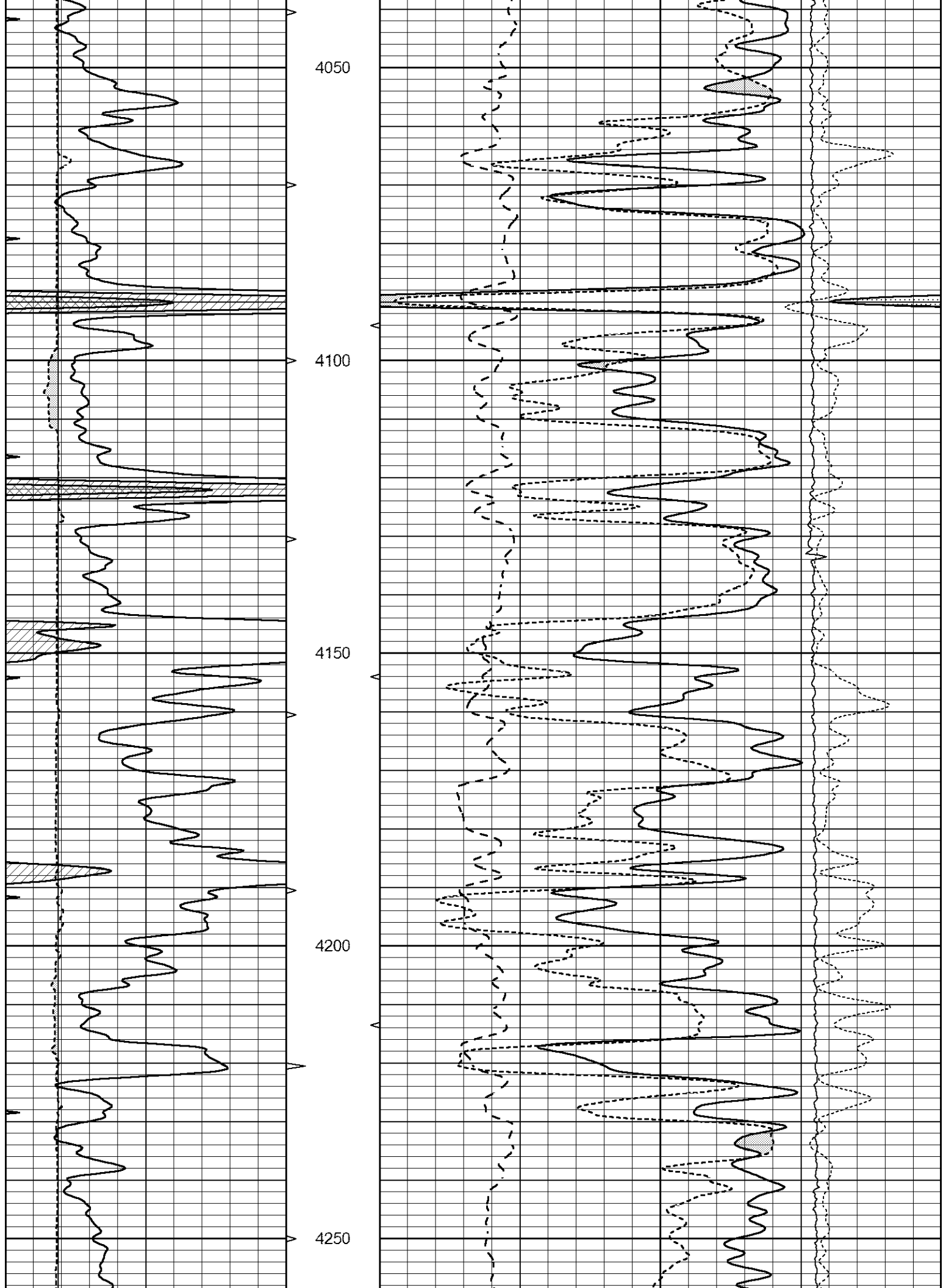
3850

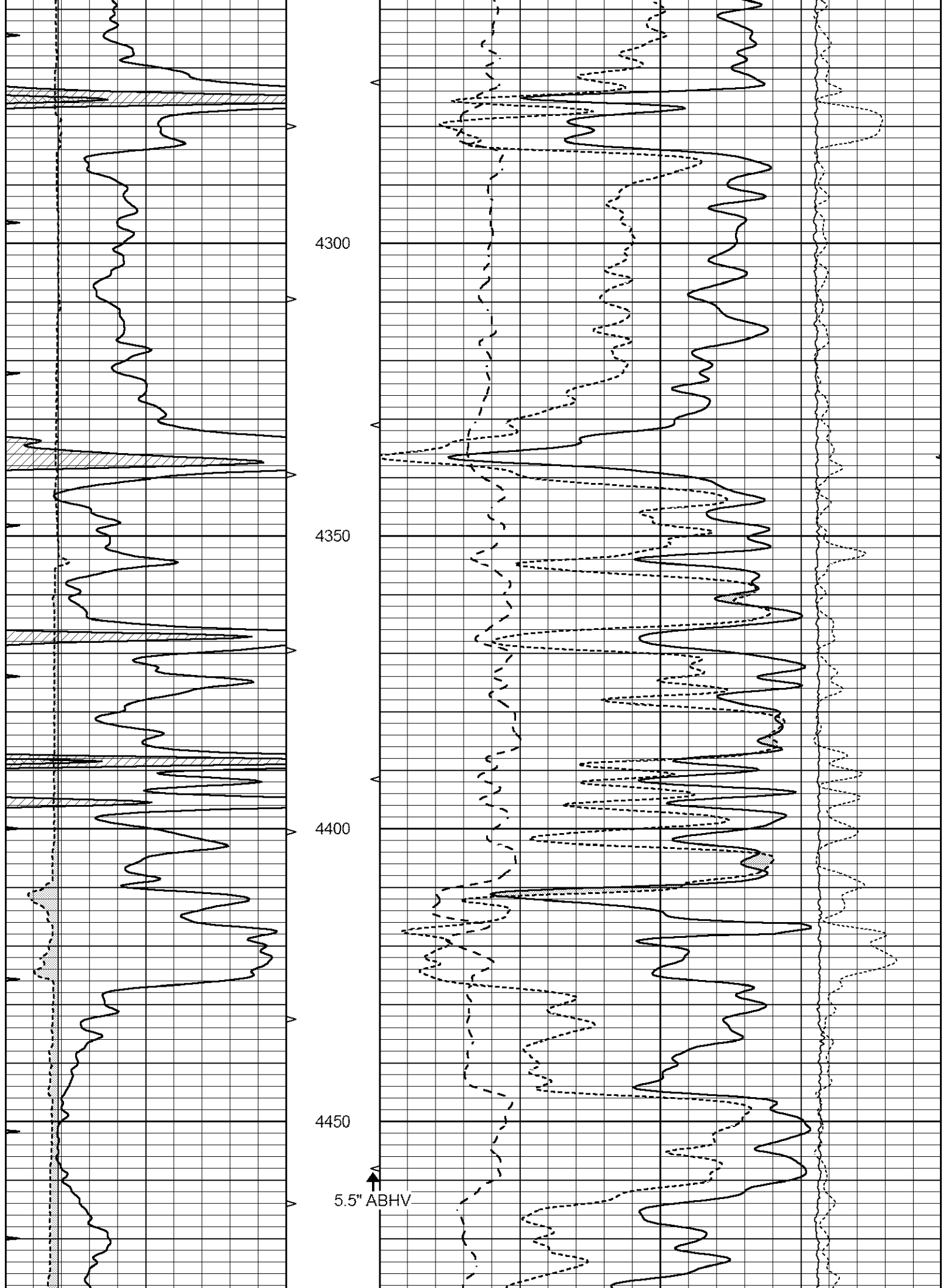
3900

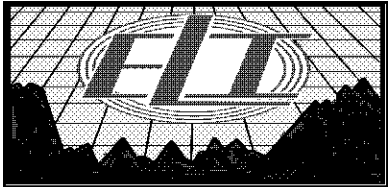
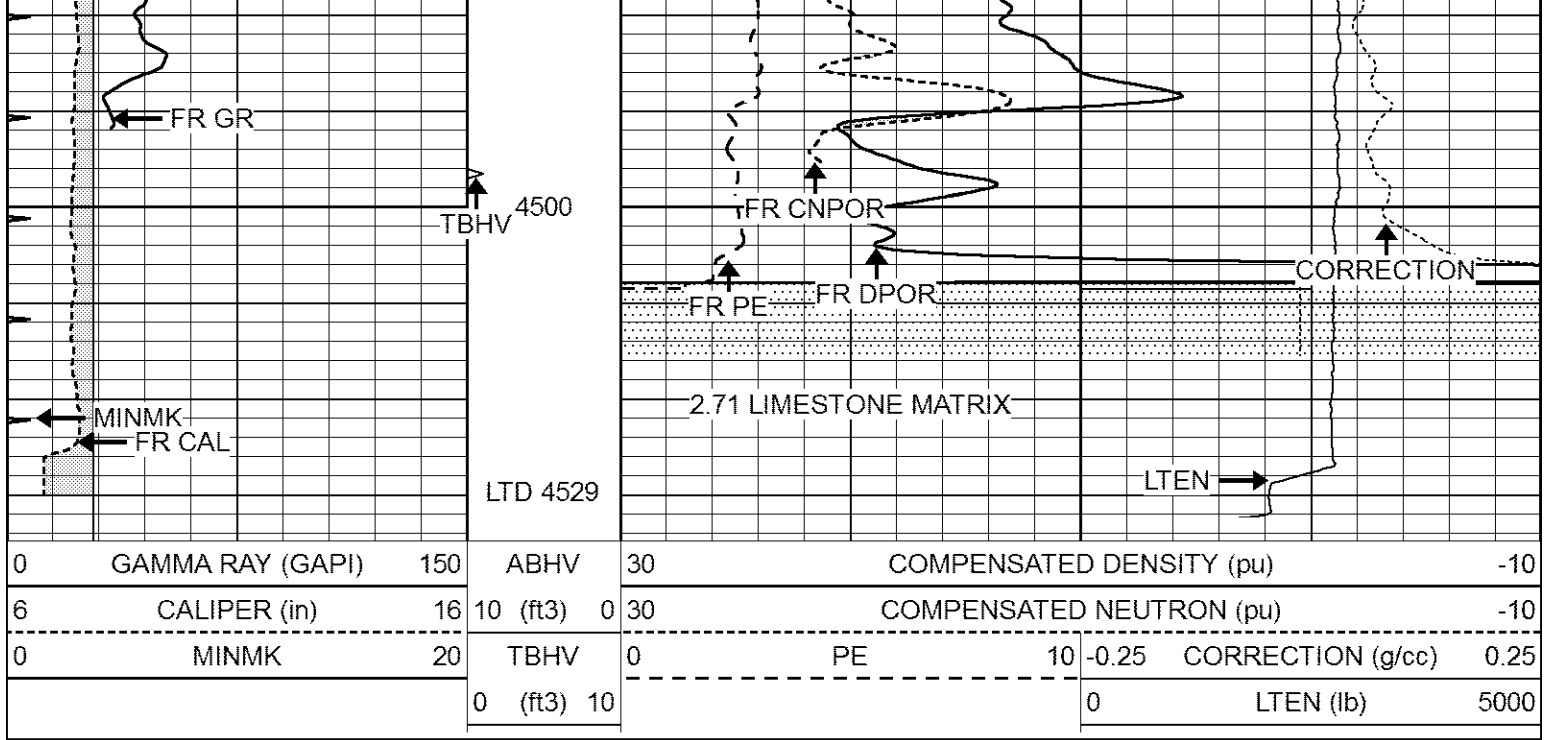
3950

4000





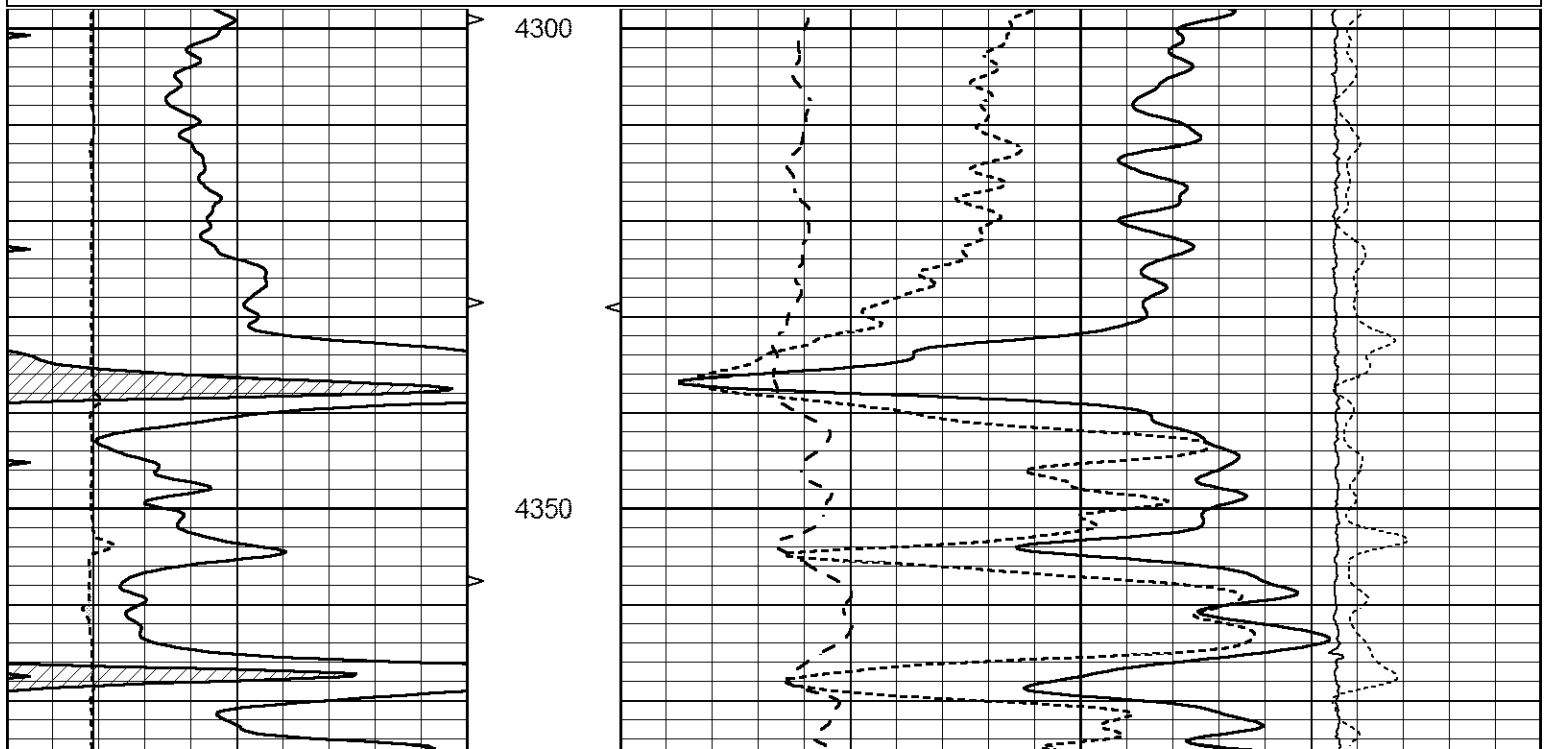


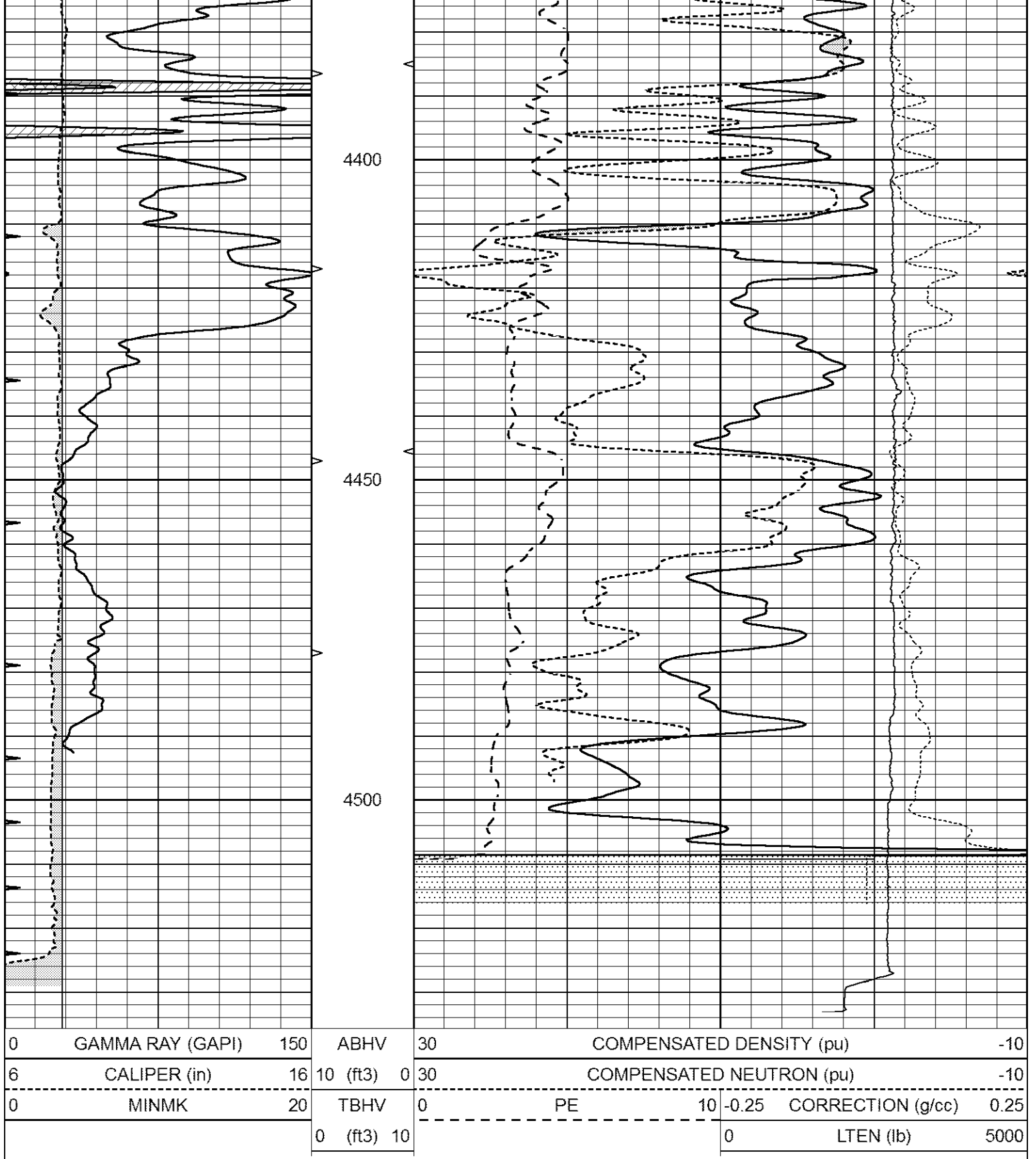


# REPEAT SECTION

Database File 7719pe.db  
 Dataset Pathname pass2PER  
 Presentation Format \_ldt\_neu  
 Dataset Creation Tue Sep 05 02:15:09 2023  
 Charted by Depth in Feet scaled 1:240

0	GAMMA RAY (GAPI)	150	ABHV	30	COMPENSATED DENSITY (pu)	-10
6	CALIPER (in)	16	10 (ft3) 0	30	COMPENSATED NEUTRON (pu)	-10
0	MINMK	20	TBHV	0	PE	10 -0.25 CORRECTION (g/cc) 0.25
			0 (ft3) 10			0 LTEN (lb) 5000





Calibration Report

Database File      7719pe.db  
 Dataset Pathname    pass4PE  
 Dataset Creation    Tue Sep 05 02:40:36 2023

Dual Induction Calibration Report

Serial-Model:	FW1410-55-Probe
Surface Cal Performed:	Sat Jul 29 01:57:42 2023
Downhole Cal Performed:	Tue Feb 19 11:44:24 2019

Surface Calibration								
Loop:	Readings			References			Results	
	Air	Loop		Air	Loop		m	b
Deep	0.011	0.656	V	1.000	400.000	mmho/m	565.000	-12.000
Medium	-0.000	0.731	V	1.000	464.000	mmho/m	530.000	-12.000
Internal:	Zero	Cal		Zero	Cal		m	b
Deep	0.007	0.649	V	0.000	400.000	mmho/m	623.784	-4.595
Medium	0.004	0.743	V	0.000	464.000	mmho/m	627.284	-2.251

Downhole Calibration								
	Readings			References			Results	
	Zero	Cal		Zero	Cal		m'	b'
Deep	-0.824	395.917	mmho/m	-0.976	397.550	mmho/m	1.004	-0.149
Medium	3.565	471.327	mmho/m	3.468	471.590	mmho/m	1.001	-0.099
LL3		7.503	V		1500.000	Ohm-m		
		0.001	V		20.000	Ohm-m		
		-7.481	V		3745.000	mmho-m		

After Survey Verification								
	Readings			Targets			Results	
	Zero	Cal		Zero	Cal		m'	b'
Deep	0.000	0.000	mmho/m	-0.824	395.917	mmho/m	1.000	0.000
Medium	0.000	0.000	mmho/m	3.565	471.327	mmho/m	1.000	0.000
LL3		0.000	Ohm-m		1500.000	Ohm-m		
		0.000	Ohm-m		20.000	Ohm-m		
		0.000	mmho-m		3745.000	mmho-m		

## Litho Density Calibration Report

Serial: 140704

Model: V4\_10P

Source Number: 74GBq-19

Master Calibration				Performed: Fri May 12 10:26:47 2023			
	Background	Aluminum		Magnesium			
Window 1	521.46	5212.91		23528.37		cps	
Window 2	43.81	1175.90		6160.42		cps	
Window 4	226.45	1217.97		4891.35		cps	
Window 5	519.17	8959.34		17037.10		cps	
Window 6	39.35	1453.85		2926.68		cps	
Window 8	253.66	2919.24		5361.51		cps	
Bulk Density	-	2.6020		1.6830		g/cc	
Pe	-	3.0000		2.5070		b/e	
LS Alpha:	: -1.7699	SS Alpha:	: -0.7448	LS CPE:		: 1.1844	
LS Beta:	: 101708.6271	SS Beta:	: 19263.5258	SS CPE:		: 1.5835	

Before Survey Background Counts Verification				Performed: Wed Dec 31 18:00:00 1969			
Window 1	0.00		cps				
Window 2	0.00		cps				
Window 4	0.00		cps				
Window 5	0.00		cps				
Window 6	0.00		cps				

Window 6	0.00	cps
Window 8	0.00	cps

After Survey Background Counts Verification		Performed: Wed Dec 31 18:00:00 1969
Window 1	0.00	cps
Window 2	0.00	cps
Window 4	0.00	cps
Window 5	0.00	cps
Window 6	0.00	cps
Window 8	0.00	cps

Lithodensity Caliper Calibration		Performed: Fri May 12 10:26:47 2023			
Results	Readings	References (in)		Gain	Offset
Low	High	Low	High		
7228.5	10151.9	8.0	14.0	0.0	-23.4

Before Survey Caliper Verification		Performed:
	Reference	Reading
Caliper (in)	_____	_____

After Survey Caliper Verification		Performed:
	Reference	Reading
Caliper (in)	_____	_____

Compensated Neutron Calibration Report

Serial Number:	080621PMC
Tool Model:	NABORS

PRE-SURVEY VERIFICATION				
Detector	Readings	Measured	Target	
Short Space	cps			
Long Space	cps	pu		pu

POST-SURVEY VERIFICATION				
Detector	Readings	Measured	Target	
Short Space	cps			
Long Space	cps	pu		pu

Gamma Ray Calibration Report

Serial Number:	7	
Tool Model:	Probe1	
Performed:	Tue Aug 01 20:36:29 2023	
Calibrator Value:	1.0	GAPI
Background Reading:	0.0	cps
Calibrator Reading:	1.0	cps
Sensitivity:	0.4400	GAPI/cps

