

SONIC
LOG



Company MULL DRILLING COMPANY, INC.
Well PETERSON TRUST #7-31 SWD
Field RAINBOW RIDGE NORTHWEST
County LYON State KANSAS

Location: API #: 15-111-20566-0000
335' FSL & 650' FWL
NE - SW - SW - SW
SEC 31 TWP 16S RGE 10E
Permanent Datum GROUND LEVEL Elevation 1301
Log Measured From KELLY BUSHING 12' A.G.L.
Drilling Measured From KELLY BUSHING
Other Services
CDL/CNL/PE
DIL/MEL
Elevation
K.B. 1313
D.F. 1311
G.L. 1301

| | |
|------------------------------|-----------------|
| Date | 8/14/23 |
| Run Number | TWO |
| Depth Driller | 3230 |
| Depth Logger | 3230 |
| Bottom Logged Interval | 3222 |
| Top Log Interval | 200 |
| Casing Driller | 13 3/8" @ 2'10" |
| Casing Logger | 220 |
| Bit Size | 7 7/8" |
| Type Fluid in Hole | CHEMICAL MUD |
| Density / Viscosity | 9.2/44 |
| pH / Fluid Loss | 10.0/9.6 |
| Source of Sample | FLOWLINE |
| Rm @ Meas. Temp | 1.80 @ 81F |
| Rmf @ Meas. Temp | 1.35 @ 81F |
| Rmc @ Meas. Temp | 2.16 @ 81F |
| Source of Rmf / Rmc | MEASUREMENT |
| Rm @ BHT | 1.34 @ 109F |
| Time Circulation Stopped | 4 HOURS |
| Time Logger on Bottom | 3:00 A.M. |
| Maximum Recorded Temperature | 109F |
| Equipment Number | 922339 |
| Location | HAYS, KANSAS |
| Recorded By | JEFF LUEBBERS |
| Witnessed By | ROGER MARTIN |

<<< Fold Here >>>

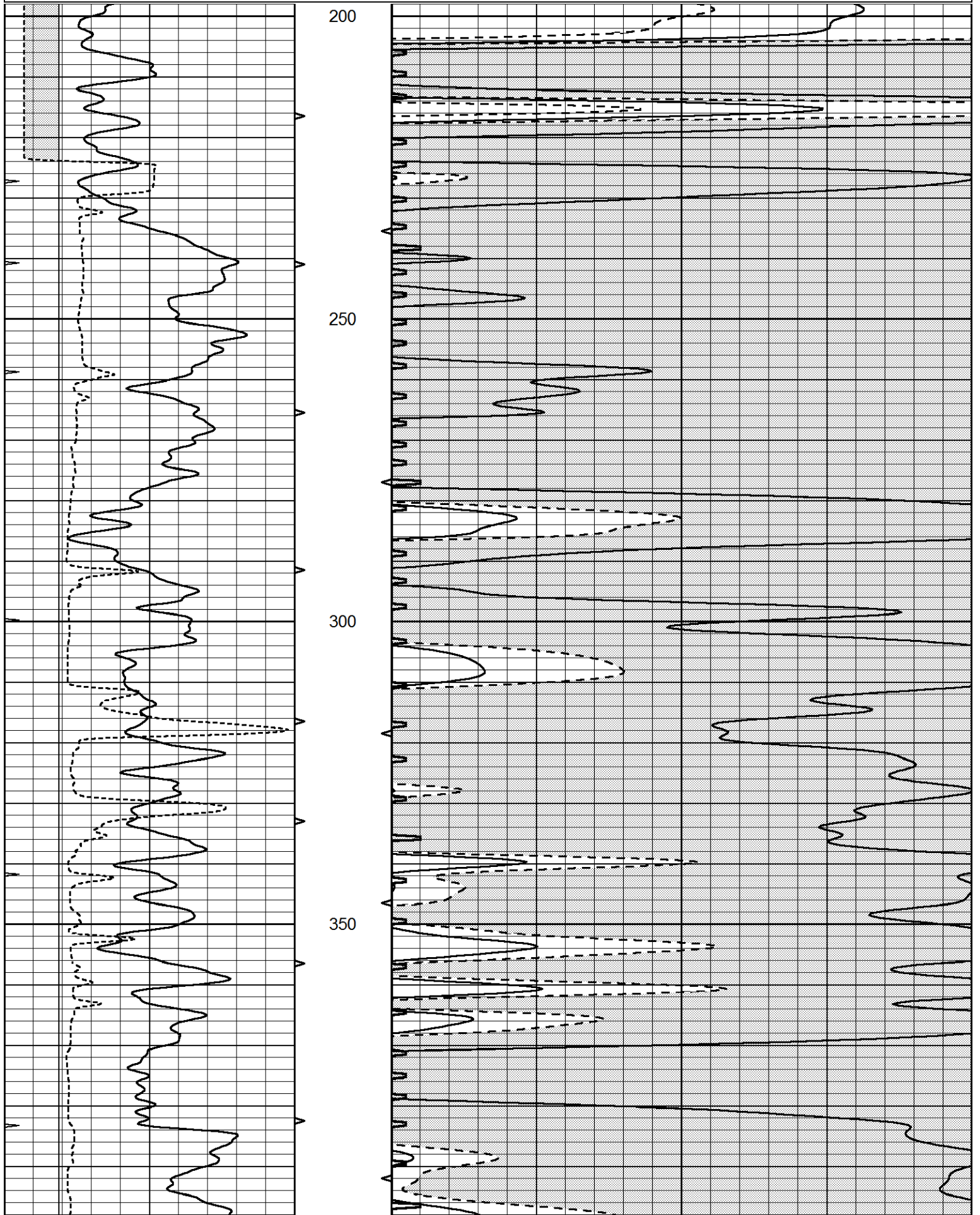
All interpretations are opinions based on inferences from electrical or other measurements and we cannot and do not guarantee the accuracy or correctness of any interpretation, and we shall not, except in the case of gross or willful negligence on our part, be liable or responsible for any loss, costs, damages, or expenses incurred or sustained by anyone resulting from any interpretation made by any of our officers, agents or employees. These interpretations are also subject to our general terms and conditions set out in our current Price Schedule.

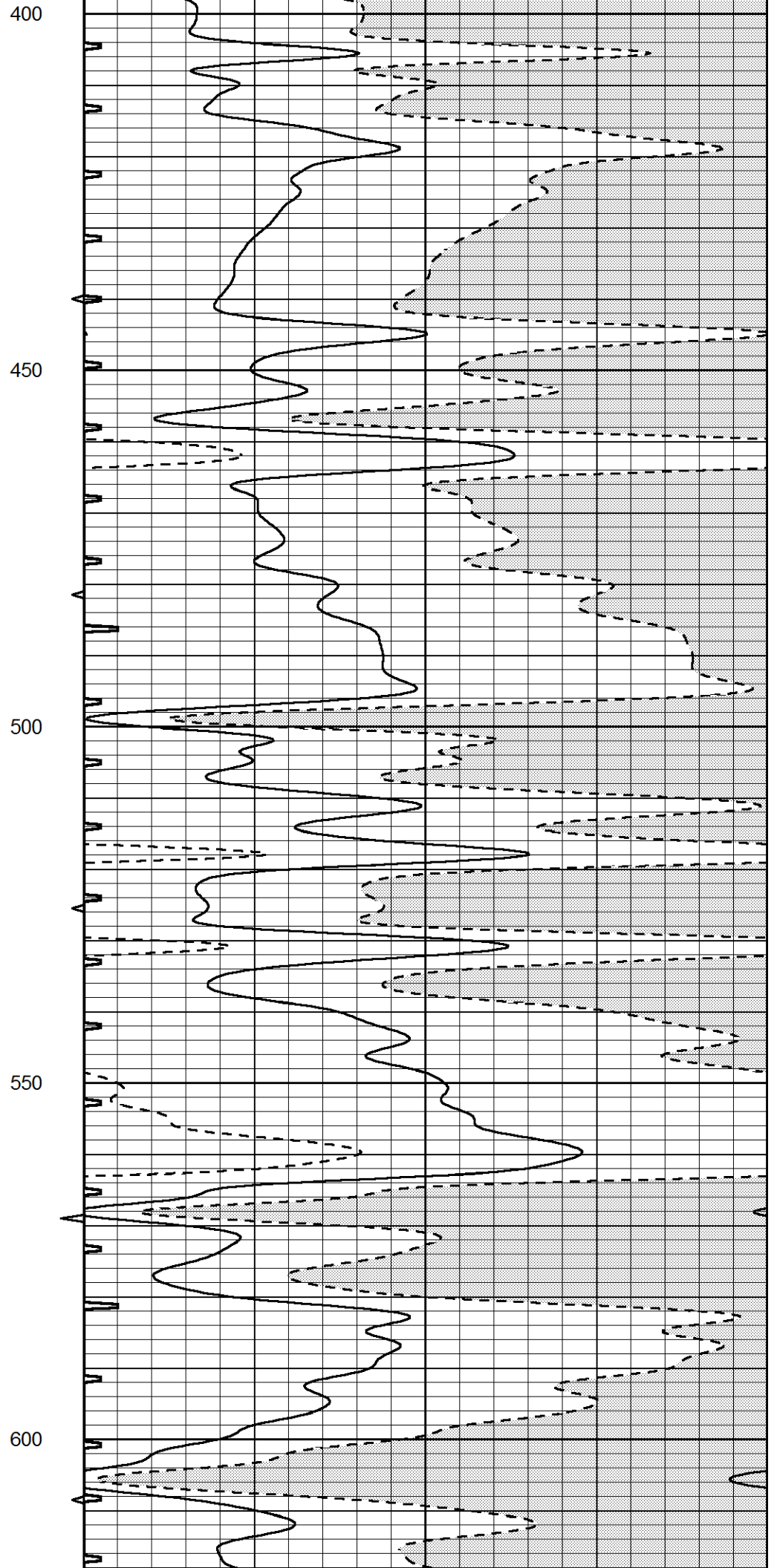
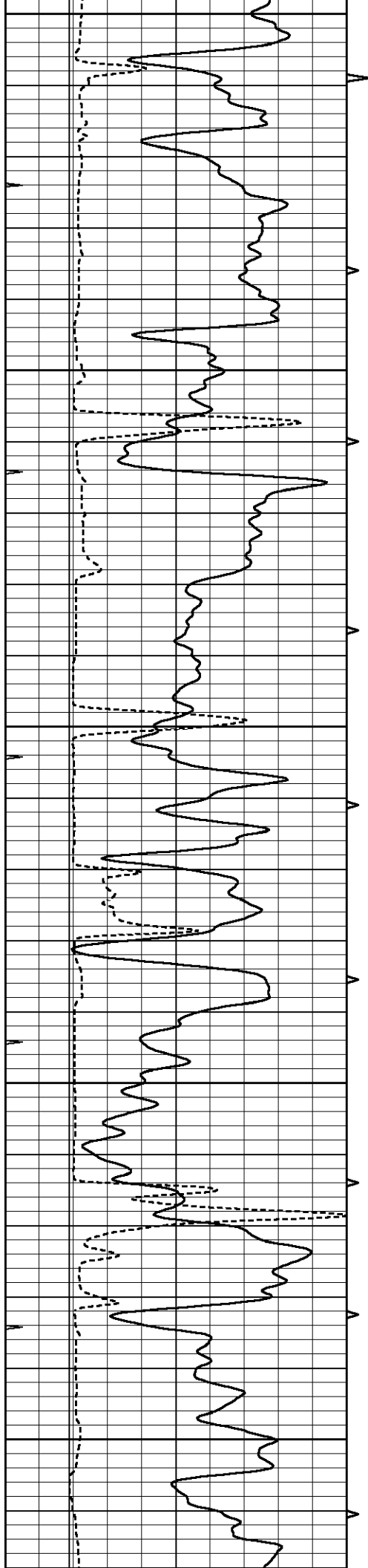
15-111-20566-0000 Comments

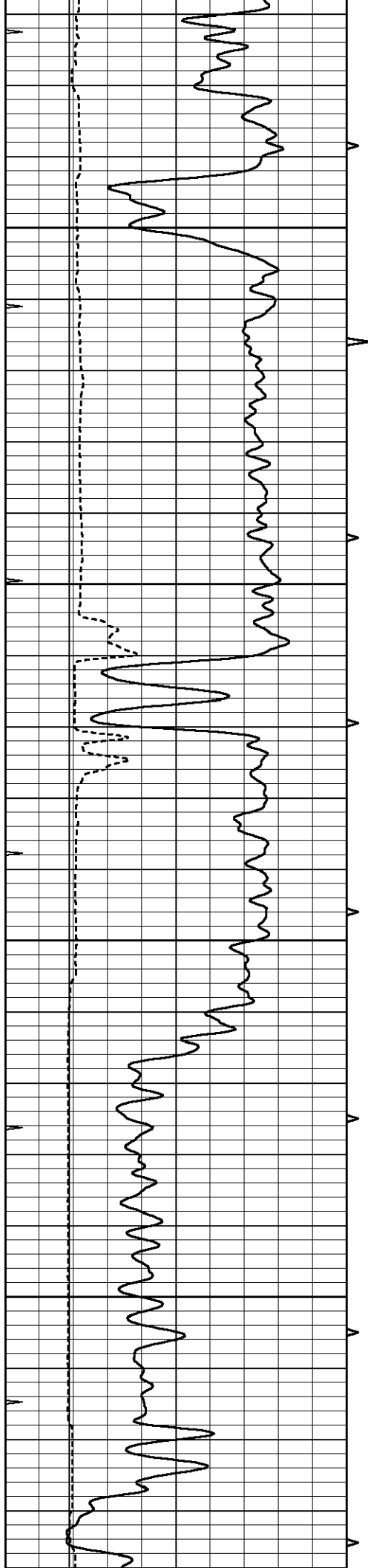
THANK YOU FOR USING ELI WIRELINE HAYS, KANSAS (785) 628-6395
DIRECTIONS
BUSHONG, KS., (RD. F & 3RD. ST.) 2.4 S. TO "RD. 310", 4 1/2W., N. INTO, THEN BACK WEST IN PAS

Database File 7318pe.db
Dataset Pathname pass6.4
Presentation Format slt
Dataset Creation Mon Aug 14 05:19:12 2023
Charted by Depth in Feet scaled 1:240

| | | | | | | | |
|---|------------------|-----|----------|-----|----------------------|---------------------|-----|
| 0 | GAMMA RAY (GAPI) | 150 | ABHV | 140 | DELTA TIME (usec/ft) | 40 | |
| 6 | CALIPER (in) | 16 | 10 (ft3) | 0 | 30 | SONIC POROSITY (pu) | -10 |
| 0 | MINMK | 20 | TBHV | 0 | ITT (msec) | 20 | |
| | | | 0 (ft3) | 10 | | | |





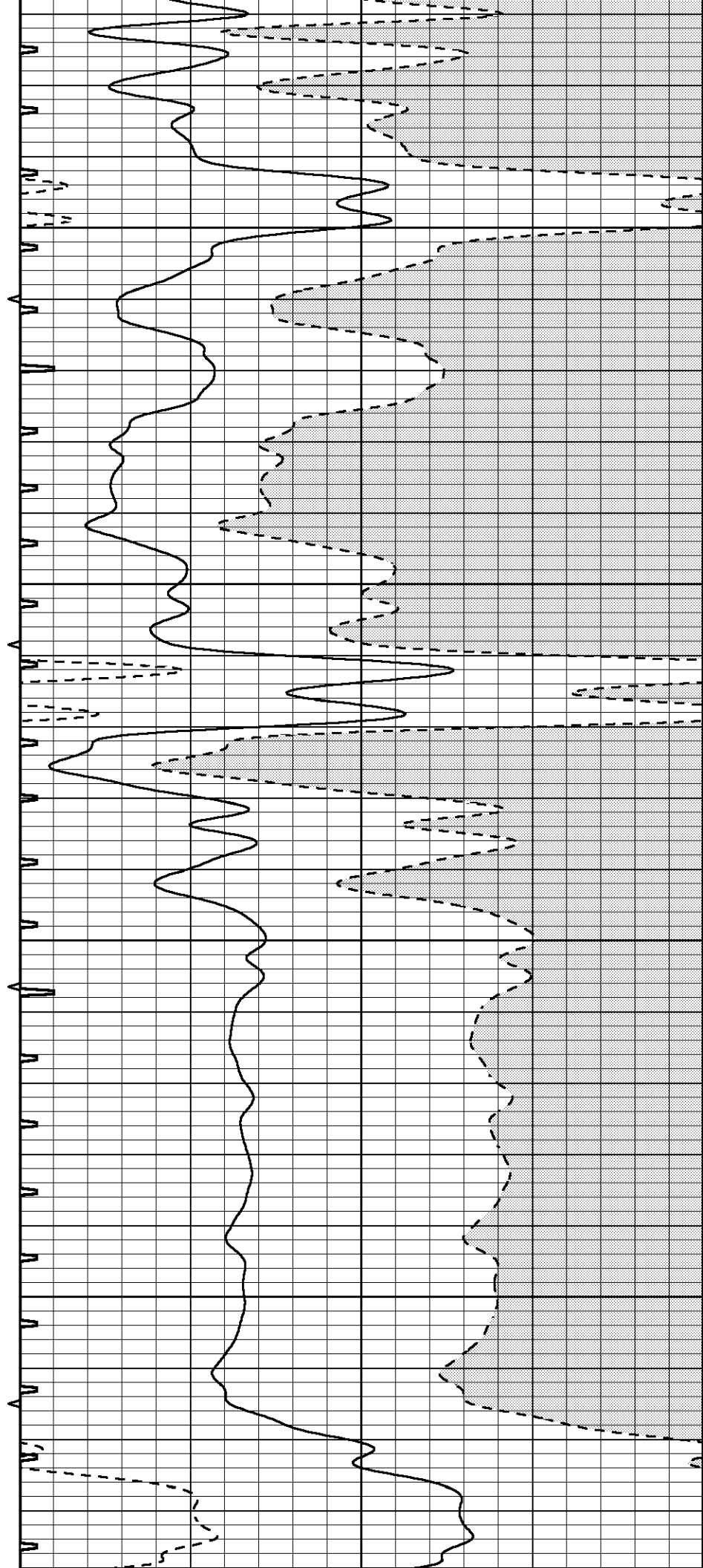


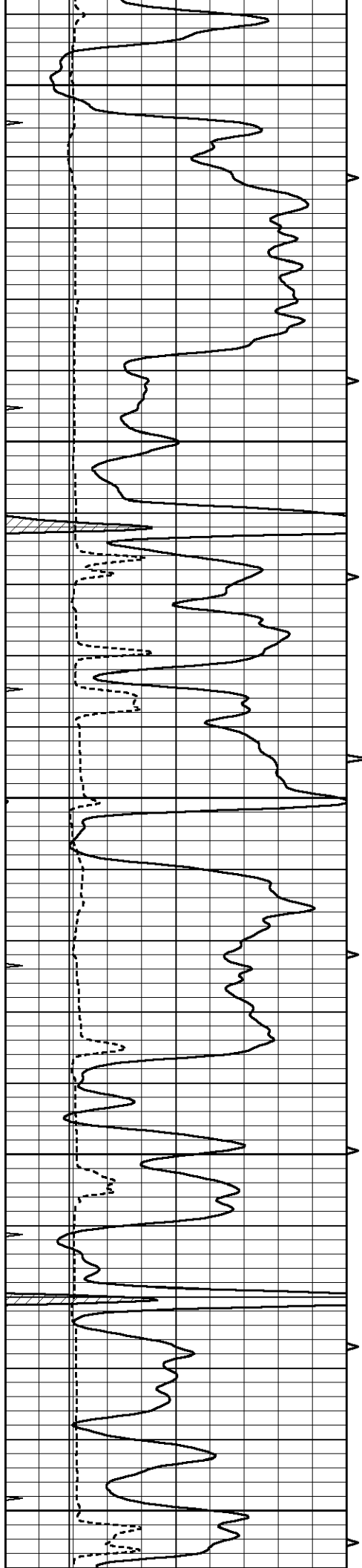
650

700

750

800





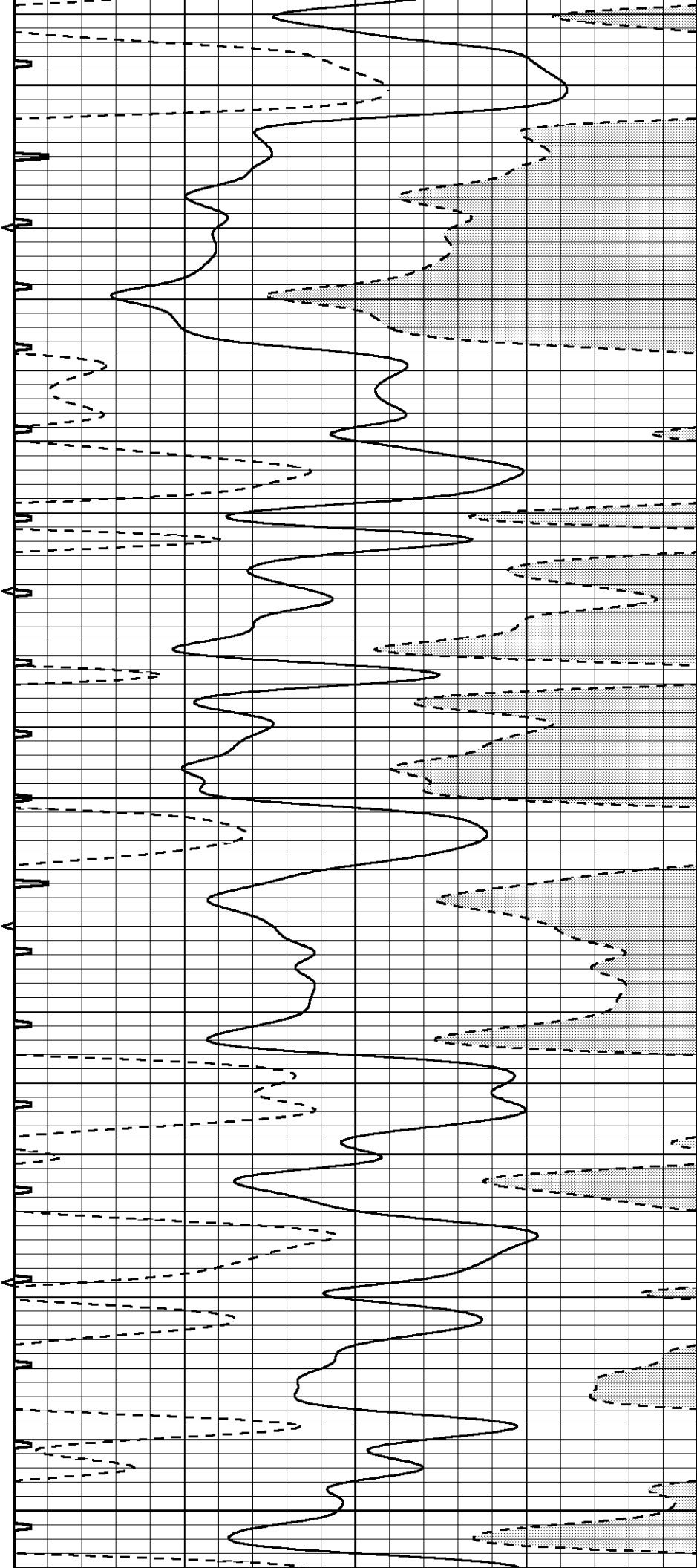
850

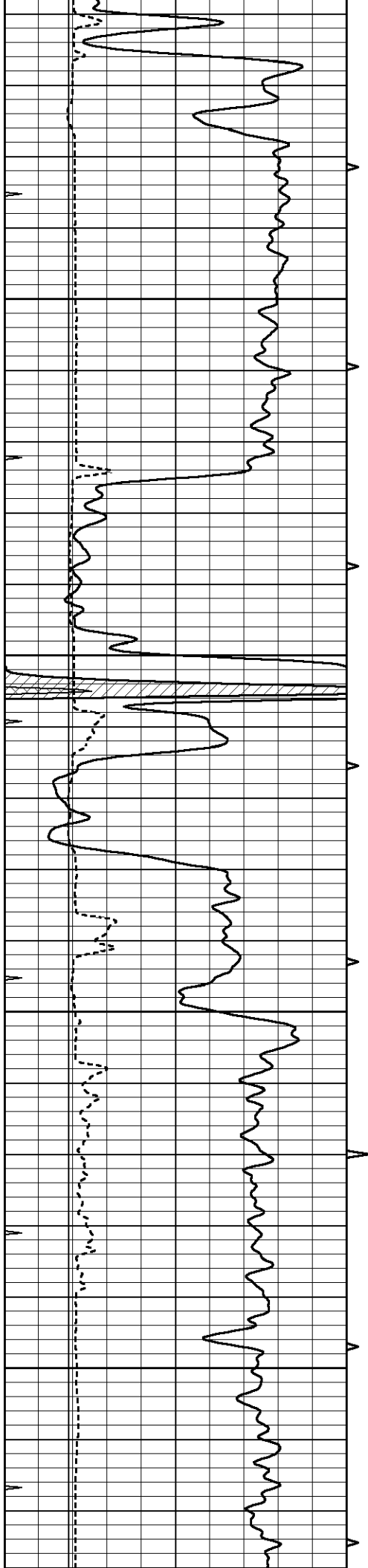
900

950

1000

1050



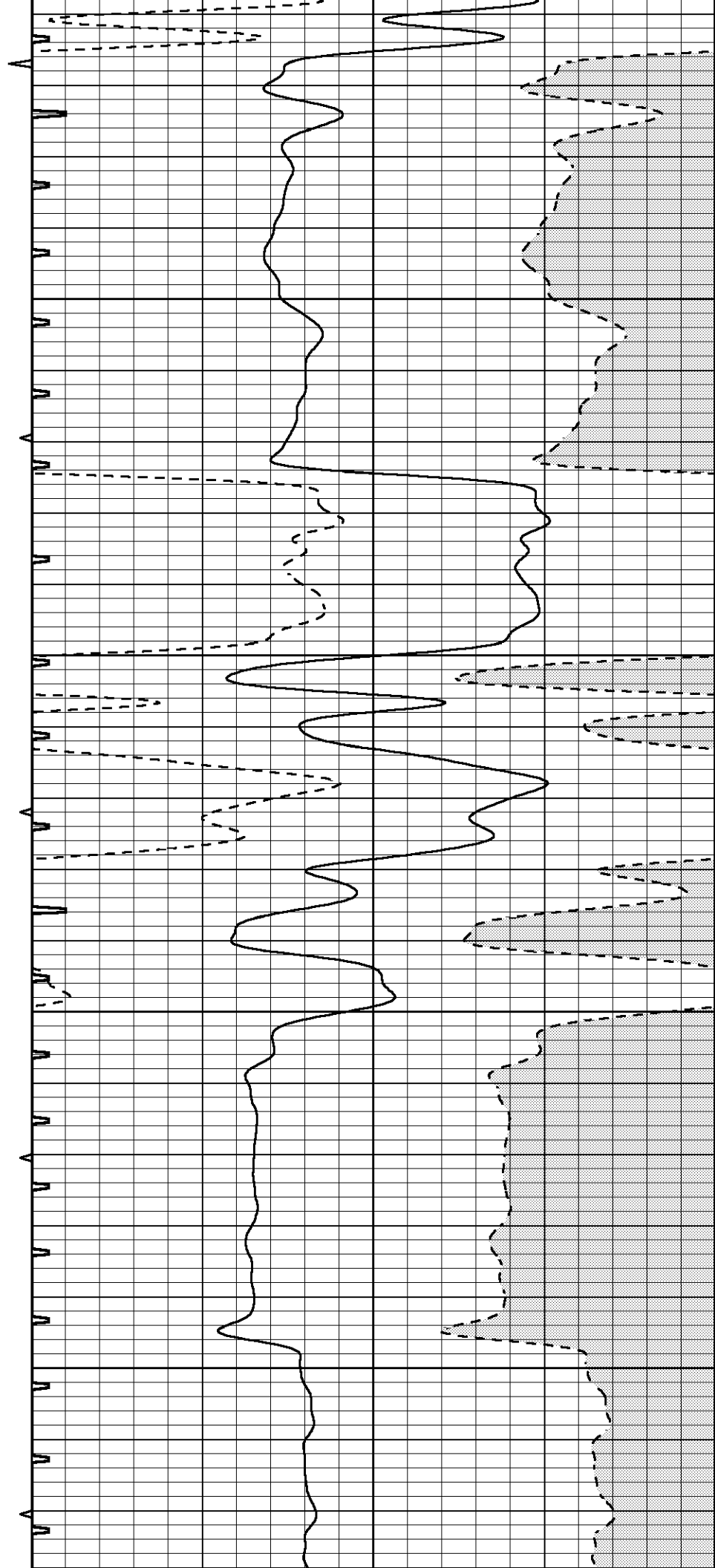


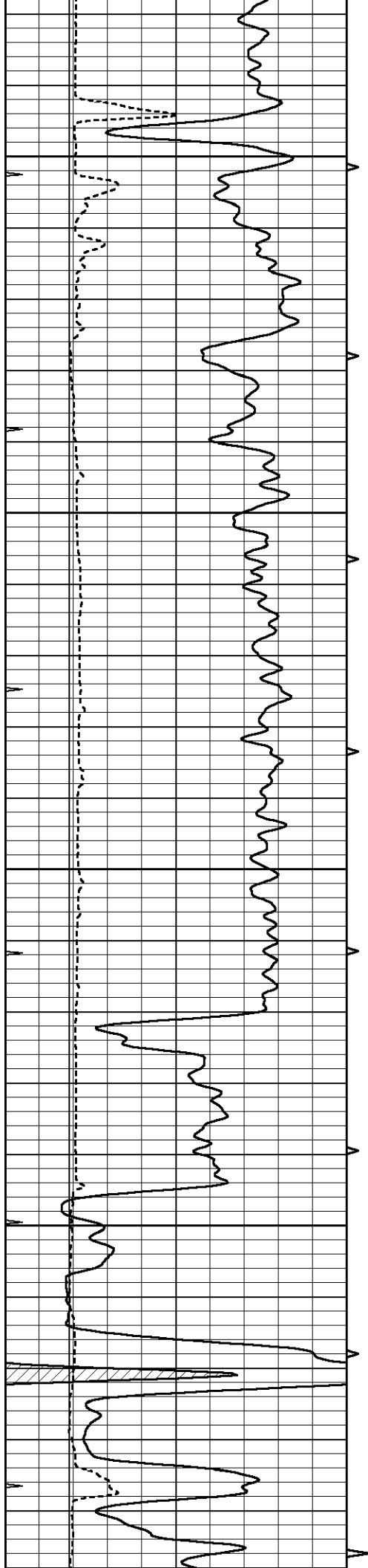
1100

1150

1200

1250



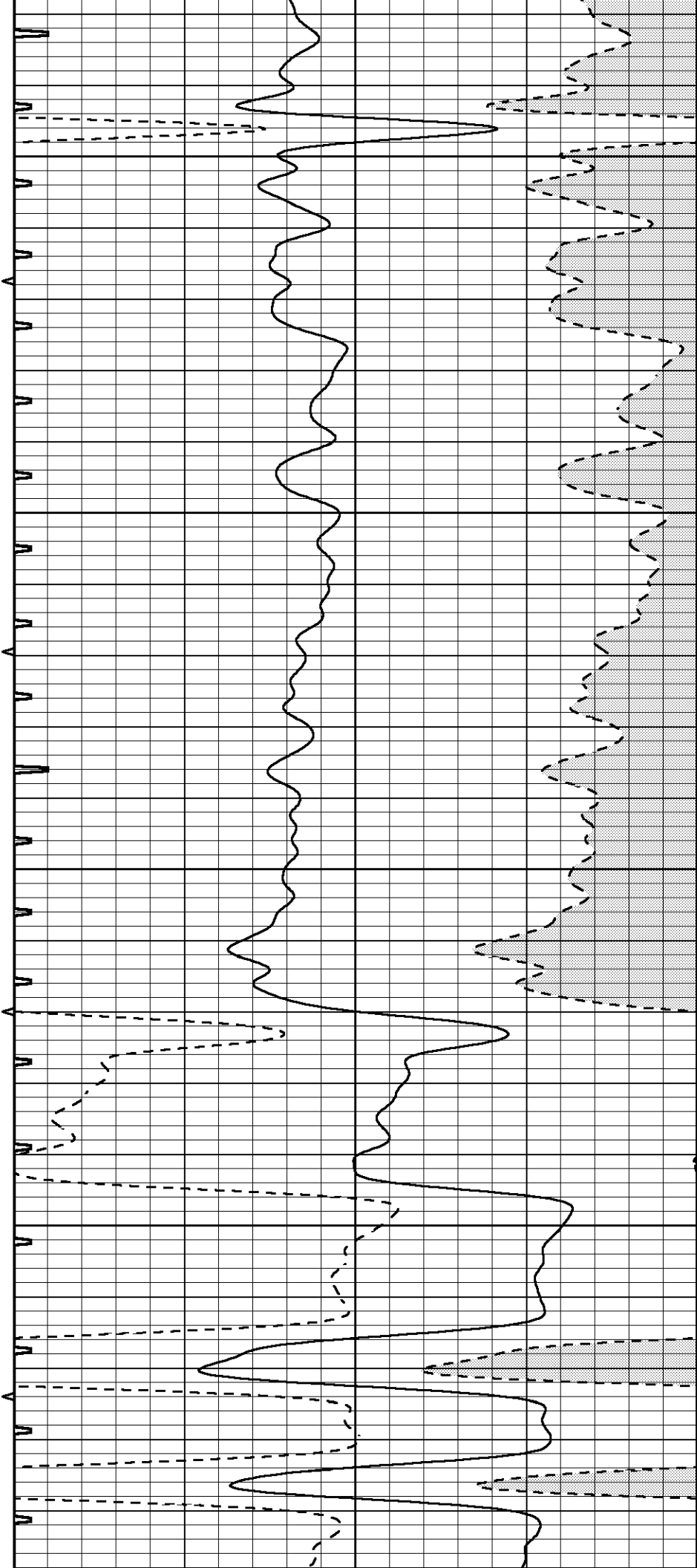


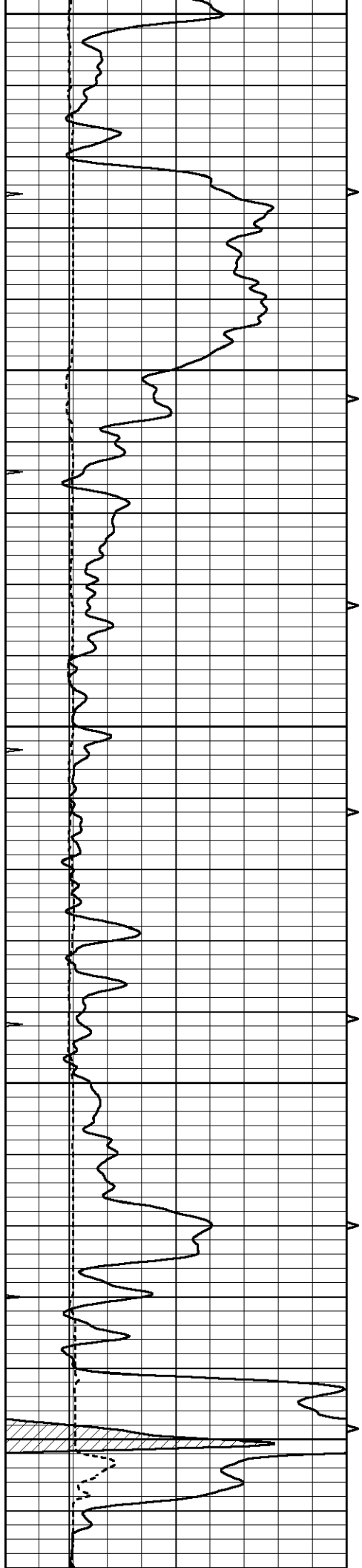
1300

1350

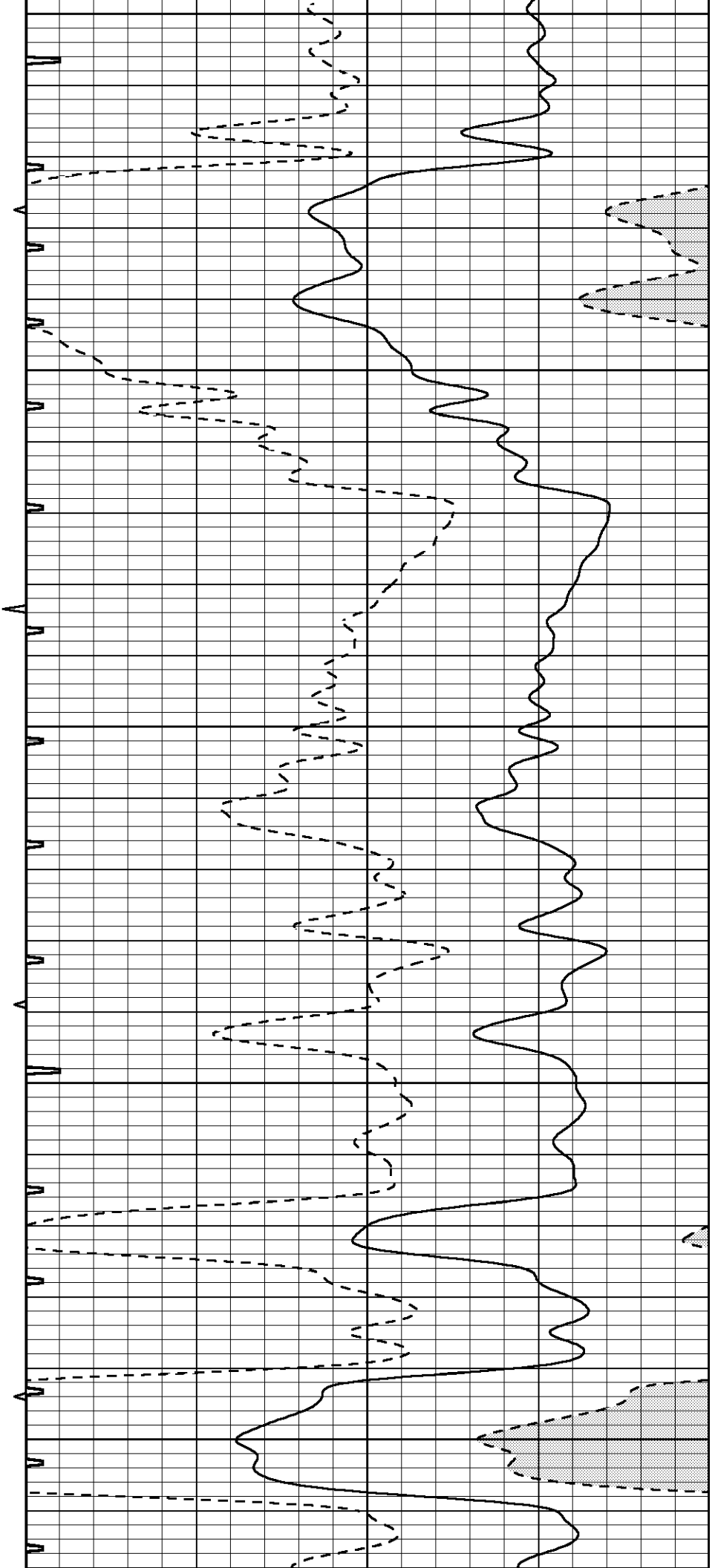
1400

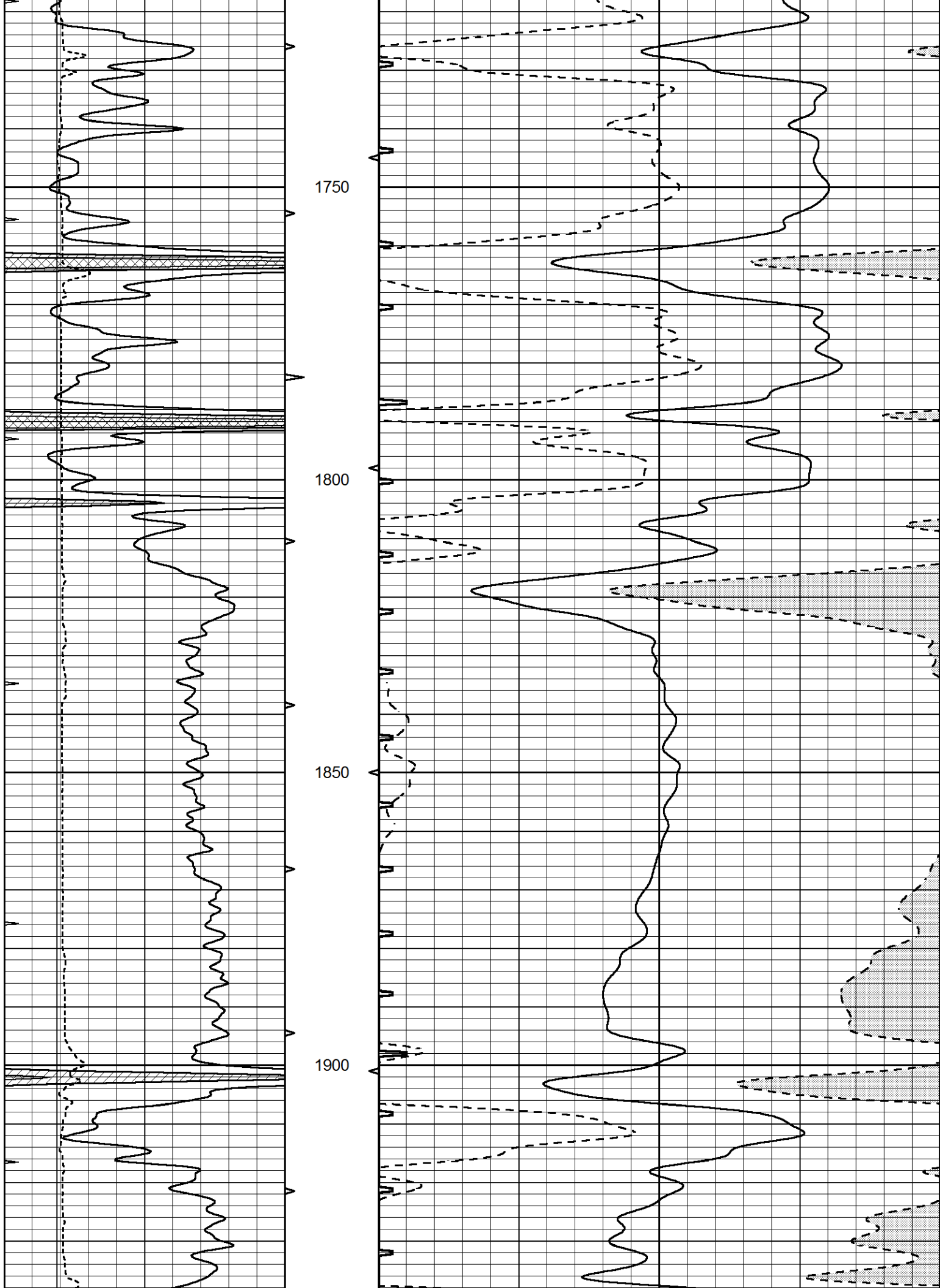
1450

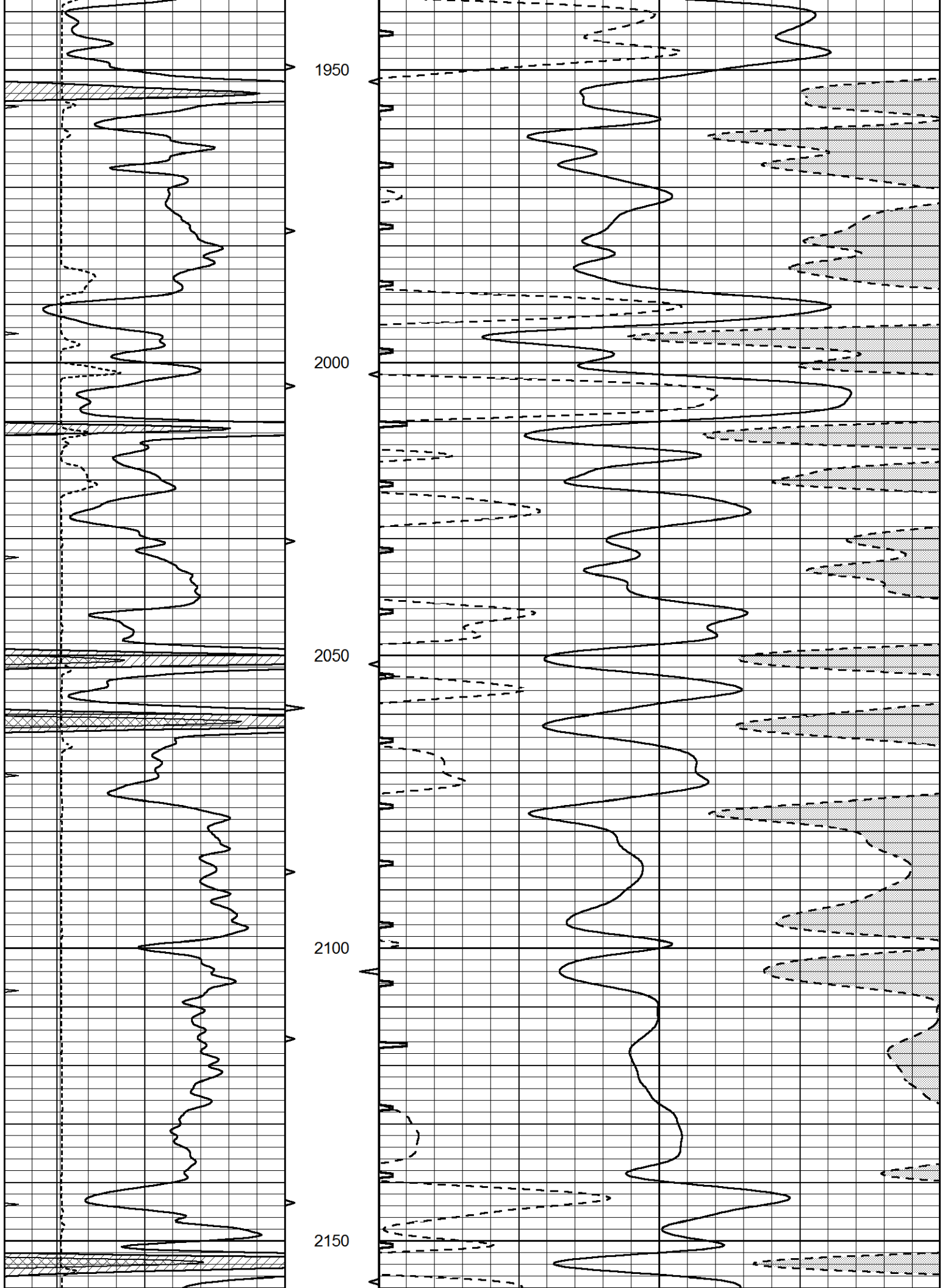


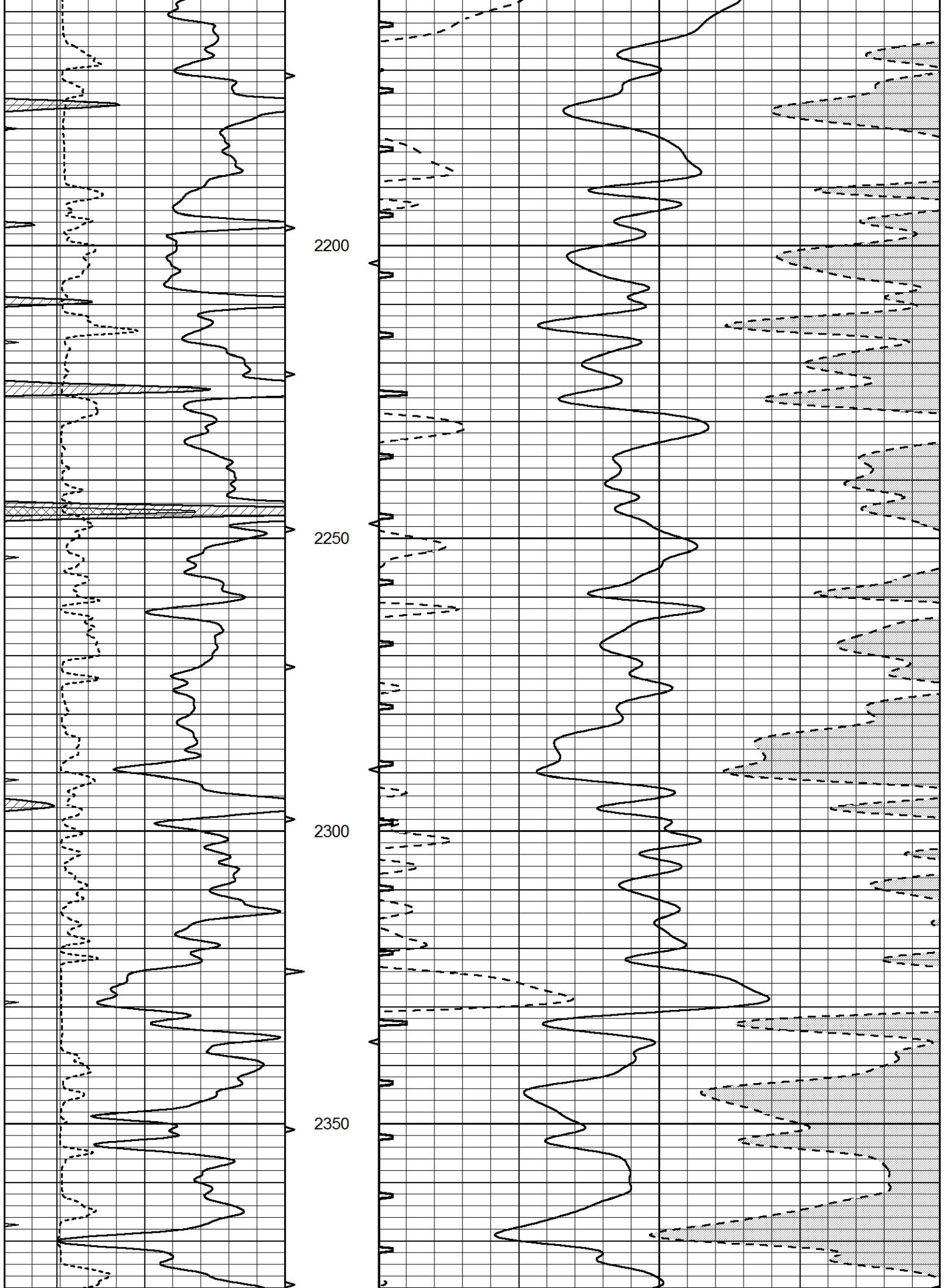


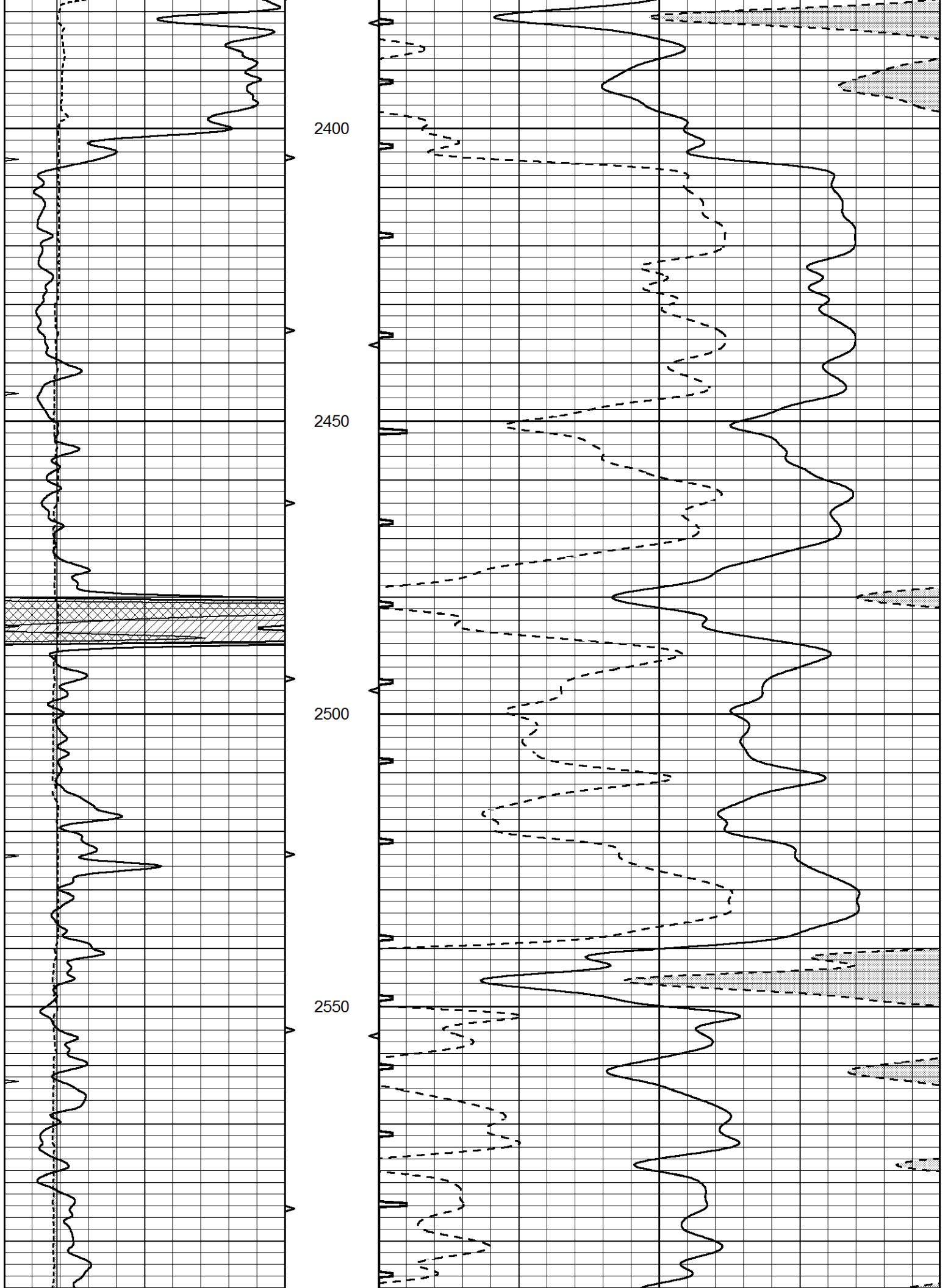
1500
1550
1600
1650
1700

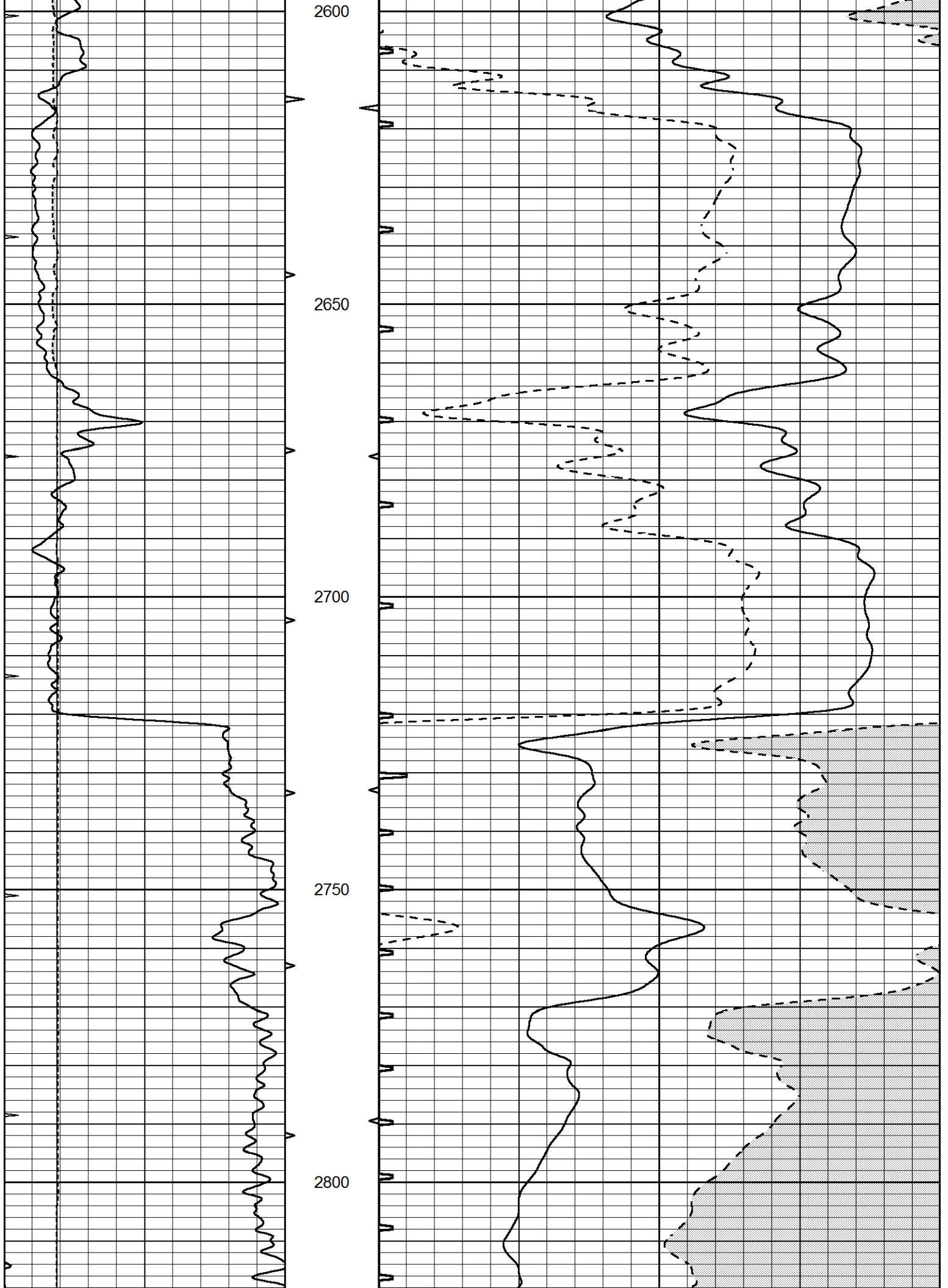


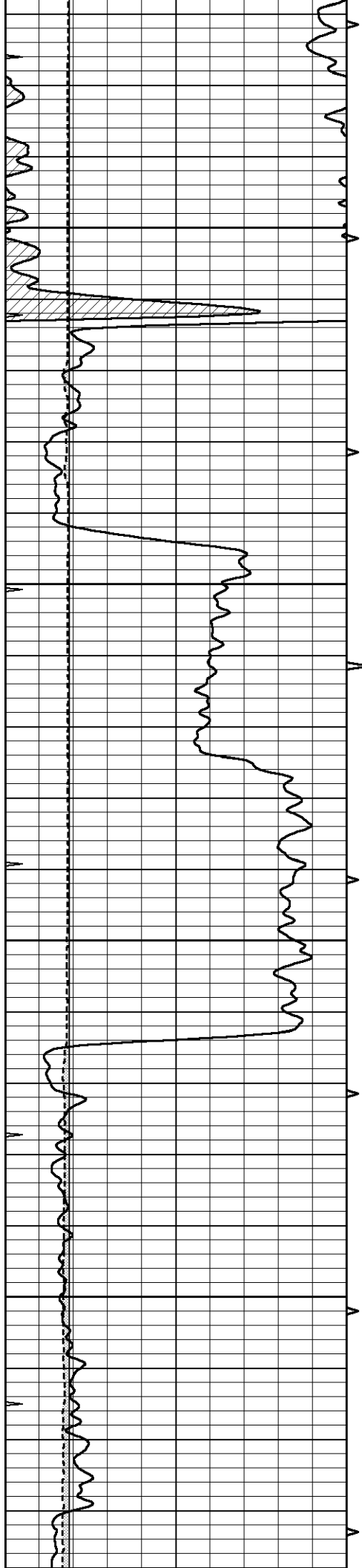










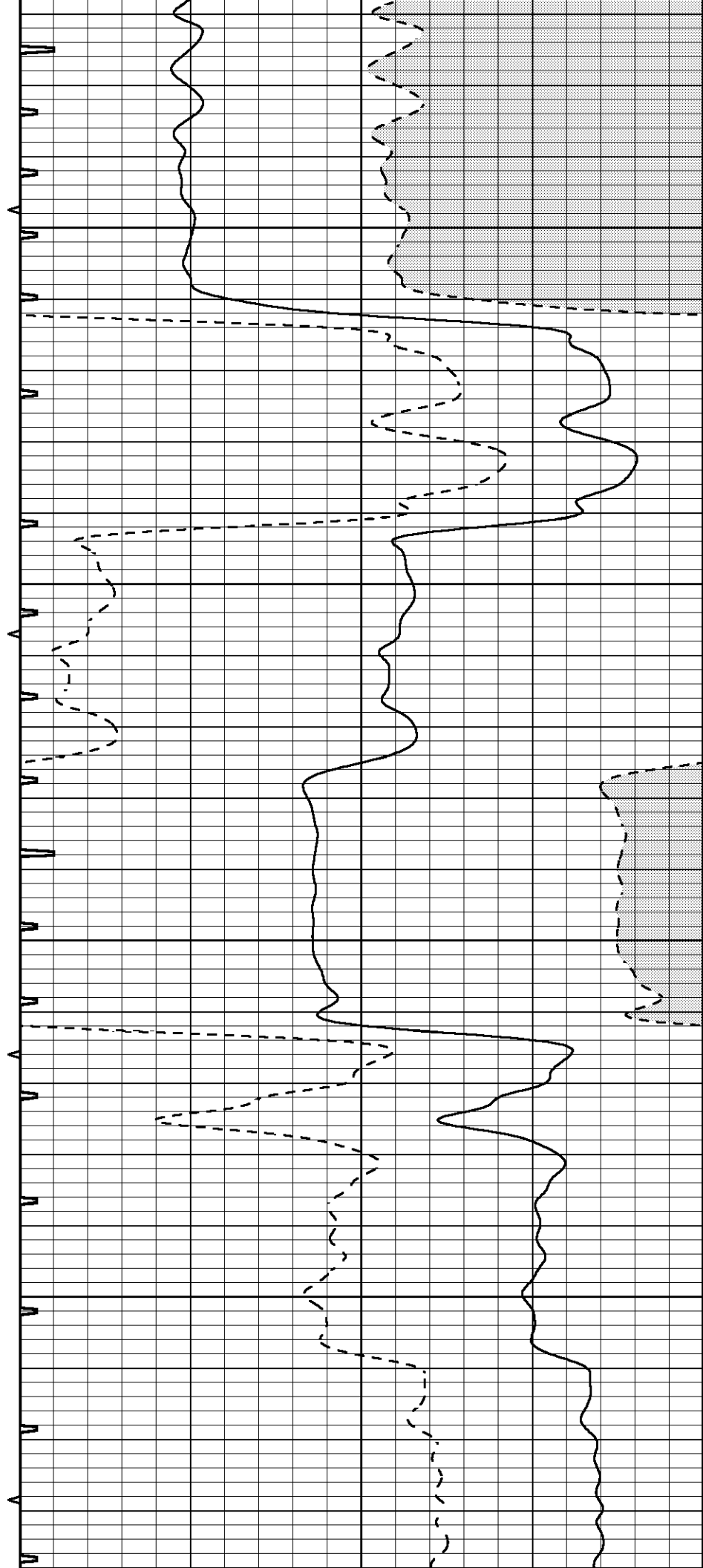


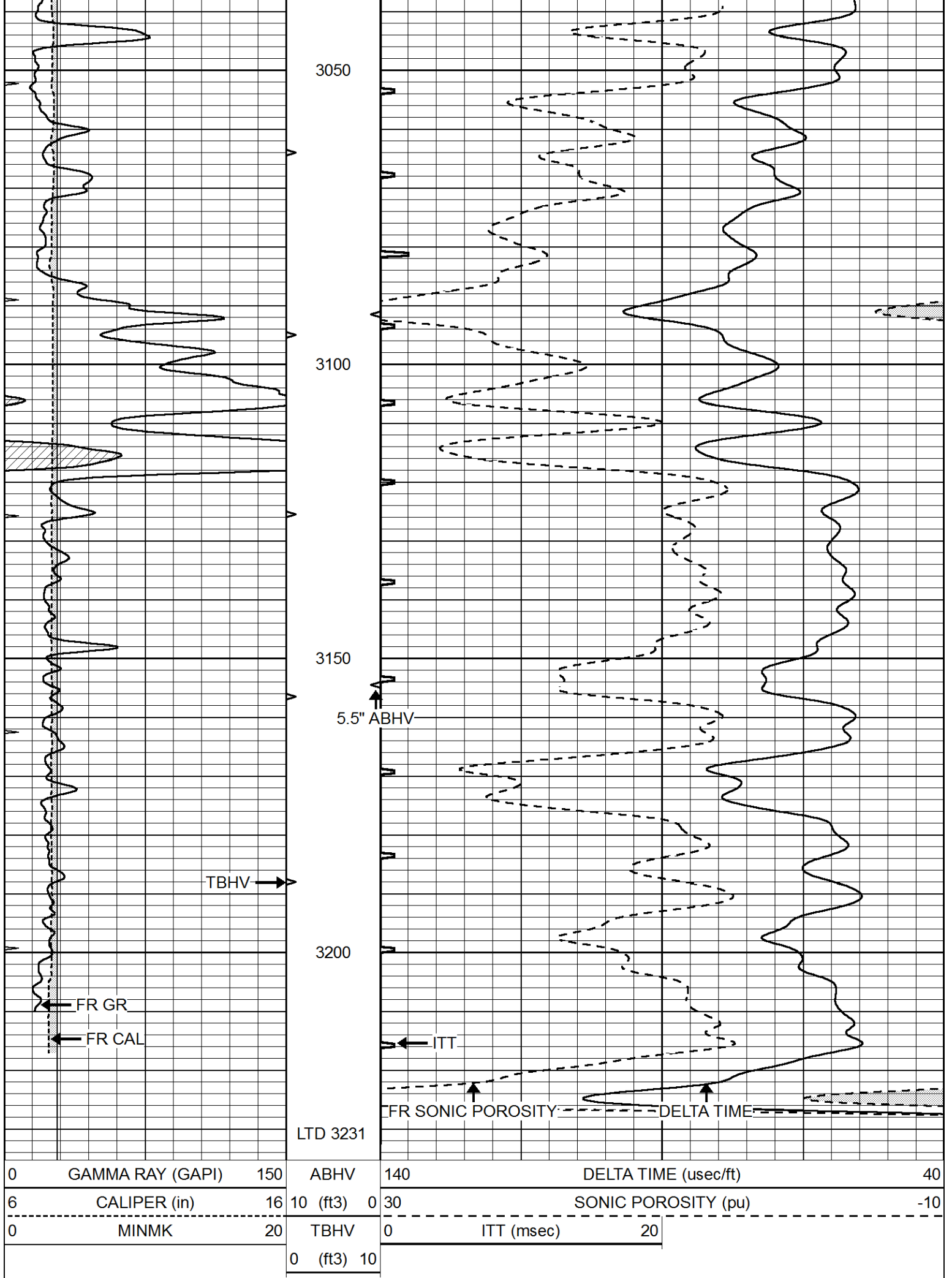
2850

2900

2950

3000



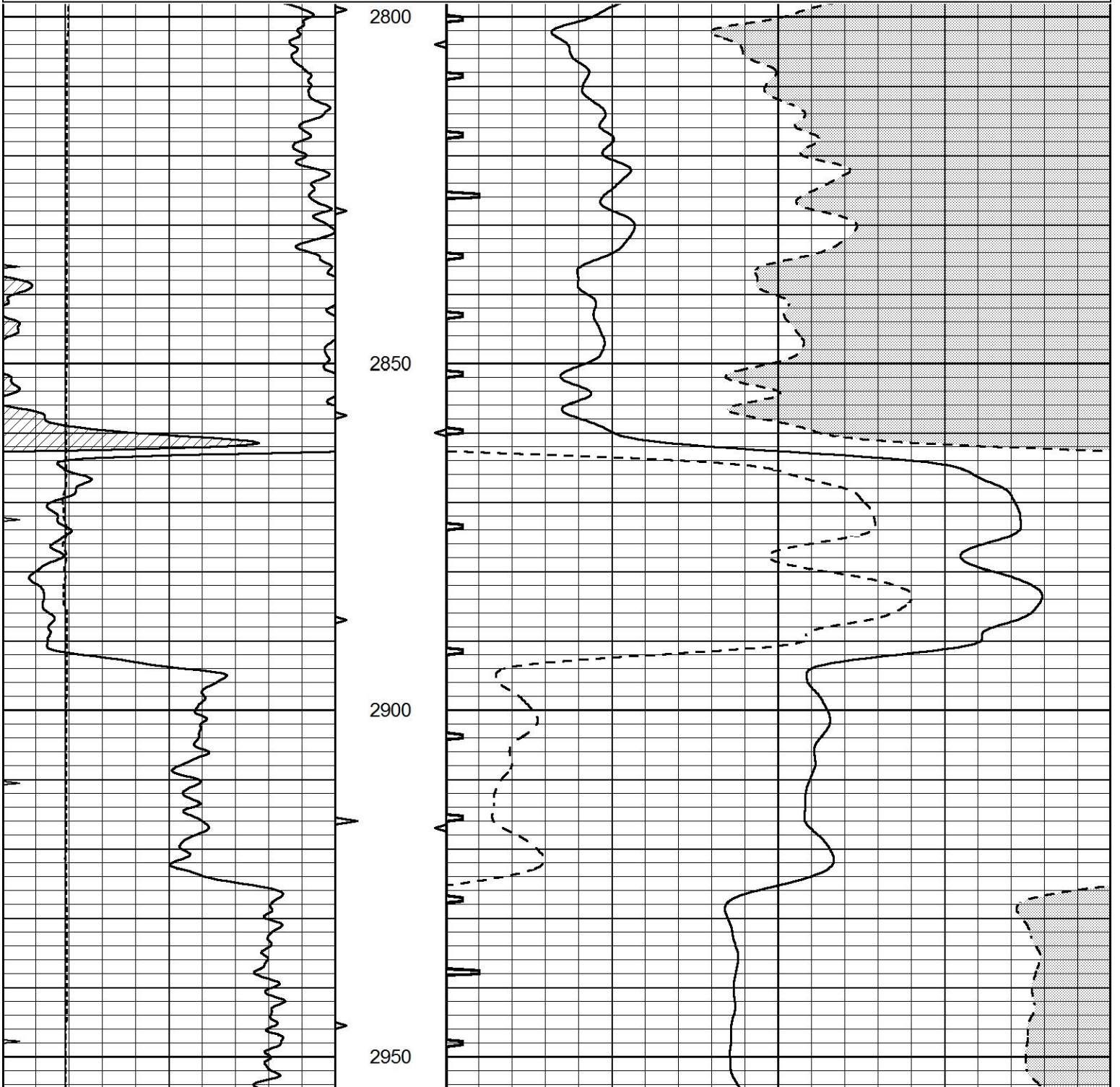


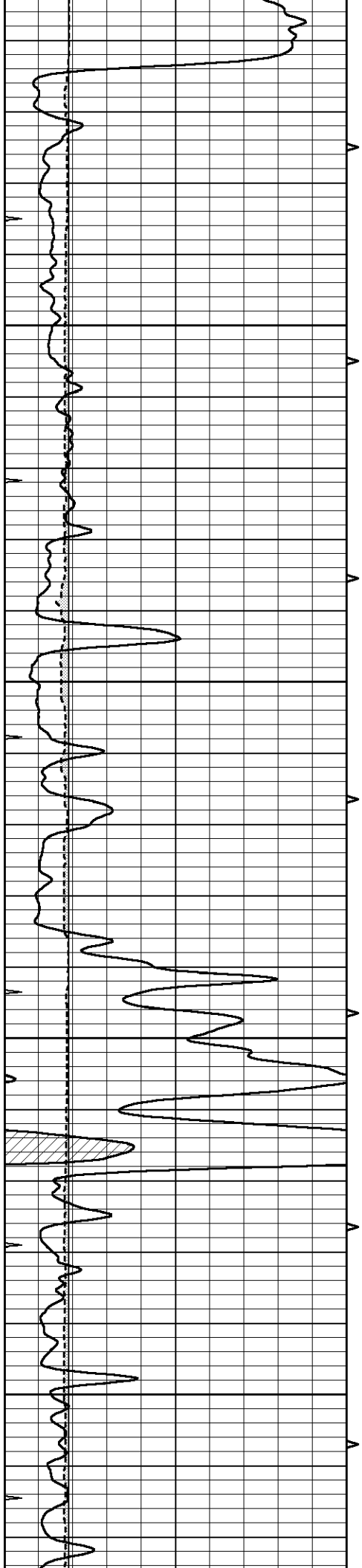


REPEAT SECTION

Database File 7318pe.db
 Dataset Pathname pass5.4
 Presentation Format slt
 Dataset Creation Mon Aug 14 05:33:25 2023
 Charted by Depth in Feet scaled 1:240

| | | | | | | |
|---|------------------|-----|----------|------|----------------------|-----|
| 0 | GAMMA RAY (GAPI) | 150 | ABHV | 140 | DELTA TIME (usec/ft) | 40 |
| 6 | CALIPER (in) | 16 | 10 (ft3) | 0 30 | SONIC POROSITY (pu) | -10 |
| 0 | MINMK | 20 | TBHV | 0 | ITT (msec) | 20 |
| | | | 0 (ft3) | 10 | | |



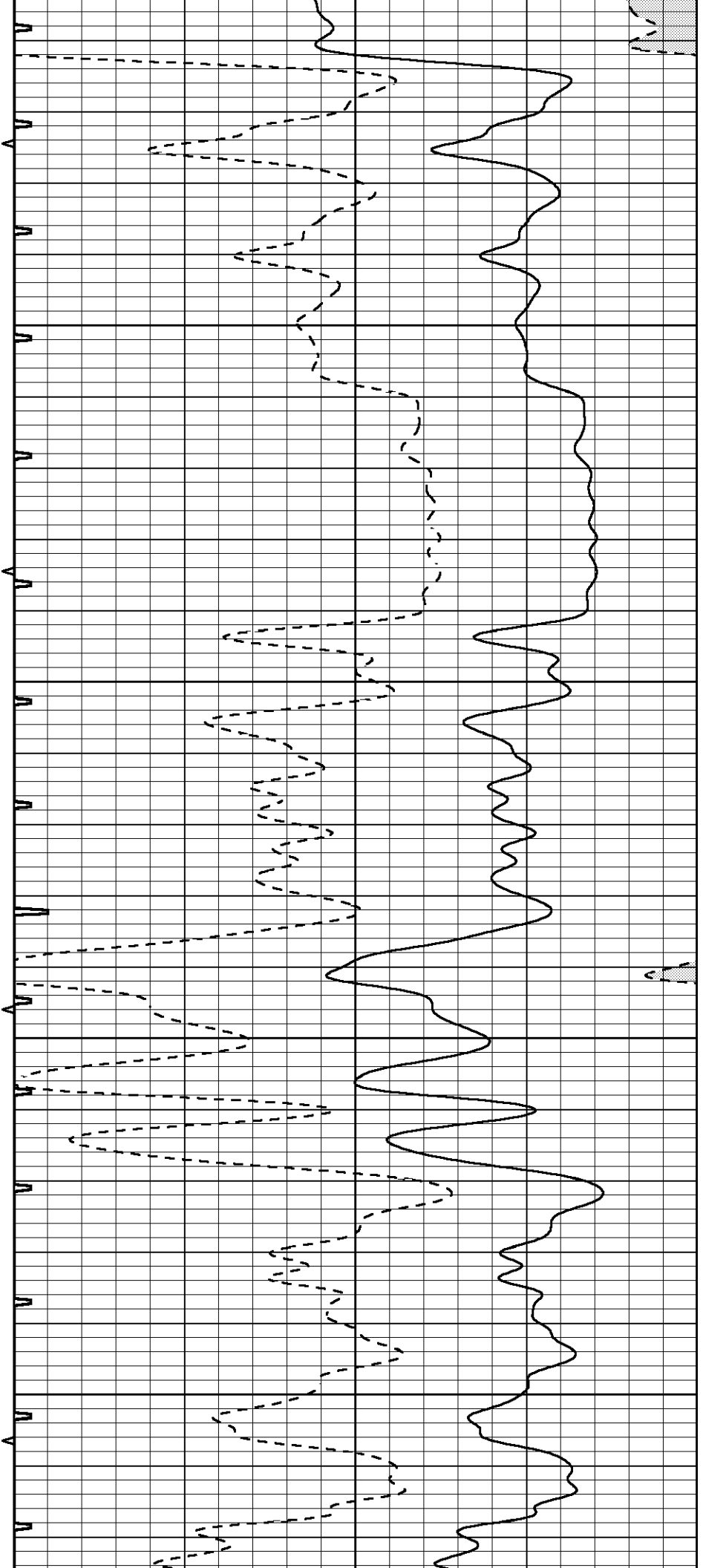


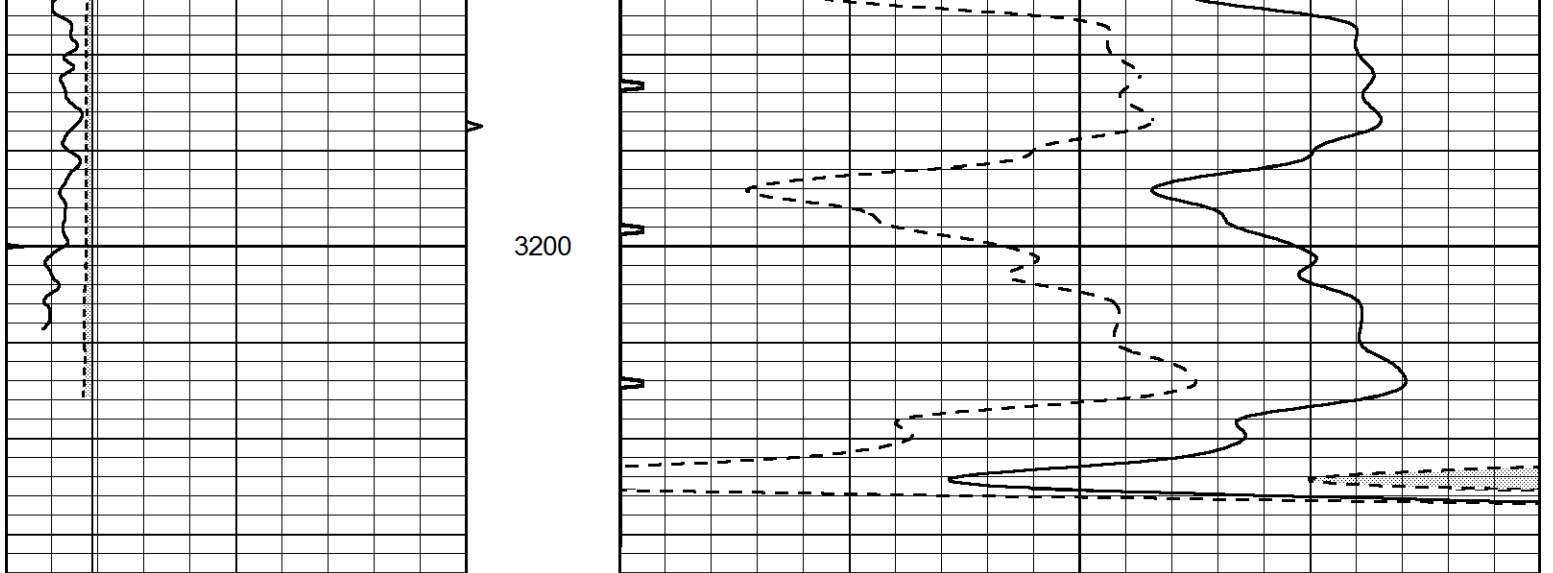
3000

3050

3100

3150





| | | | | | | |
|---|------------------|-----|------------|-----|----------------------|-----|
| 0 | GAMMA RAY (GAPI) | 150 | ABHV | 140 | DELTA TIME (usec/ft) | 40 |
| 6 | CALIPER (in) | 16 | 10 (ft3) 0 | 30 | SONIC POROSITY (pu) | -10 |
| 0 | MINMK | 20 | TBHV | 0 | ITT (msec) | 20 |
| | | | 0 (ft3) 10 | | | |