



**BORE HOLE PROFILE  
LOG  
5.5" CASING**

Company MULL DRILLING COMPANY, INC.  
Well PETERSON TRUST #7-31 SWD  
Field RAINBOW RIDGE NORTHWEST  
County LYON  
State KANSAS

Company MULL DRILLING COMPANY, INC.  
Well PETERSON TRUST #7-31 SWD  
Field RAINBOW RIDGE NORTHWEST  
County LYON State KANSAS

Location: API #: 15-111-20566-0000  
335' FSL & 650' FWL  
NE - SW - SW - SW  
SEC 31 TWP 16S RGE 10E  
Permanent Datum GROUND LEVEL Elevation 1301  
Log Measured From KELLY BUSHING 12' A.G.L.  
Drilling Measured From KELLY BUSHING  
Other Services  
CDU/CNL/PE  
DIL/MEL/SON  
Elevation  
K.B. 1313  
D.F. 1311  
G.L. 1301

Date	8/14/23
Run Number	ONE
Depth Driller	3230
Depth Logger	3230
Bottom Logged Interval	3206
Top Log Interval	200
Casing Driller	13 3/8" @ 2'10"
Casing Logger	220
Bit Size	7 7/8"
Type Fluid in Hole	CHEMICAL MUD
Density / Viscosity	9.2/44
pH / Fluid Loss	10.0/9.6
Source of Sample	FLOWLINE
Rm @ Meas. Temp	1.80 @ 81F
Rmf @ Meas. Temp	1.35 @ 81F
Rmc @ Meas. Temp	2.16 @ 81F
Source of Rmf / Rmc	MEASUREMENT
Rm @ BHT	1.34 @ 109F
Time Circulation Stopped	2 HOURS
Time Logger on Bottom	12:30 A.M.
Maximum Recorded Temperature	109F
Equipment Number	922339
Location	HAYS, KANSAS
Recorded By	JEFF LUEBBERS
Witnessed By	ROGER MARTIN

<<< Fold Here >>>

All interpretations are opinions based on inferences from electrical or other measurements and we cannot and do not guarantee the accuracy or correctness of any interpretation, and we shall not, except in the case of gross or willful negligence on our part, be liable or responsible for any loss, costs, damages, or expenses incurred or sustained by anyone resulting from any interpretation made by any of our officers, agents or employees. These interpretations are also subject to our general terms and conditions set out in our current Price Schedule.

15-111-20566-0000 Comments

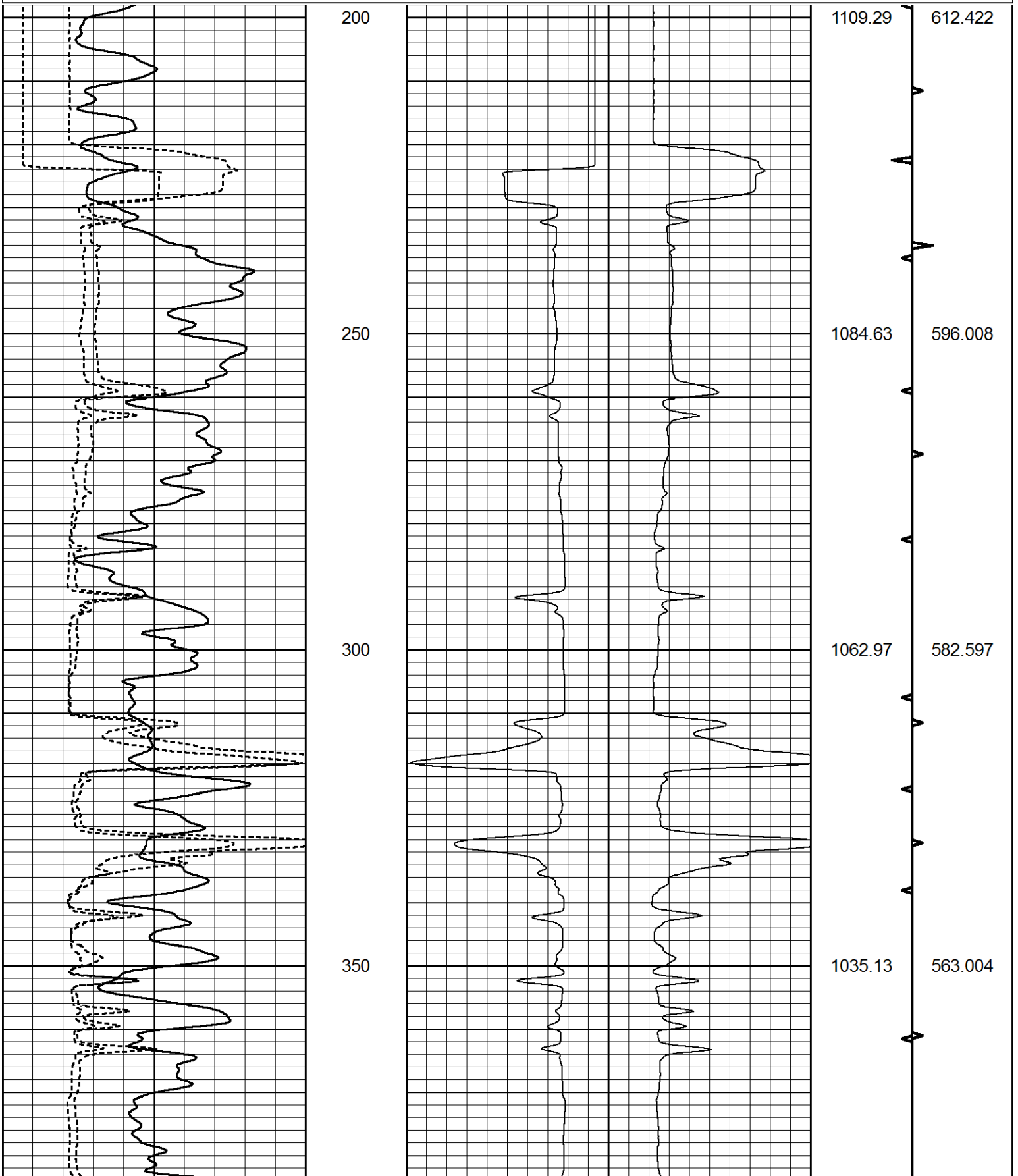
THANK YOU FOR USING ELI WIRELINE HAYS, KANSAS (785) 628-6395  
DIRECTIONS  
BUSHONG, KS., (RD. F & 3RD. ST.) 2.4 S. TO "RD. 310", 4 1/2W., N. INTO, THEN BACK WEST IN PAS

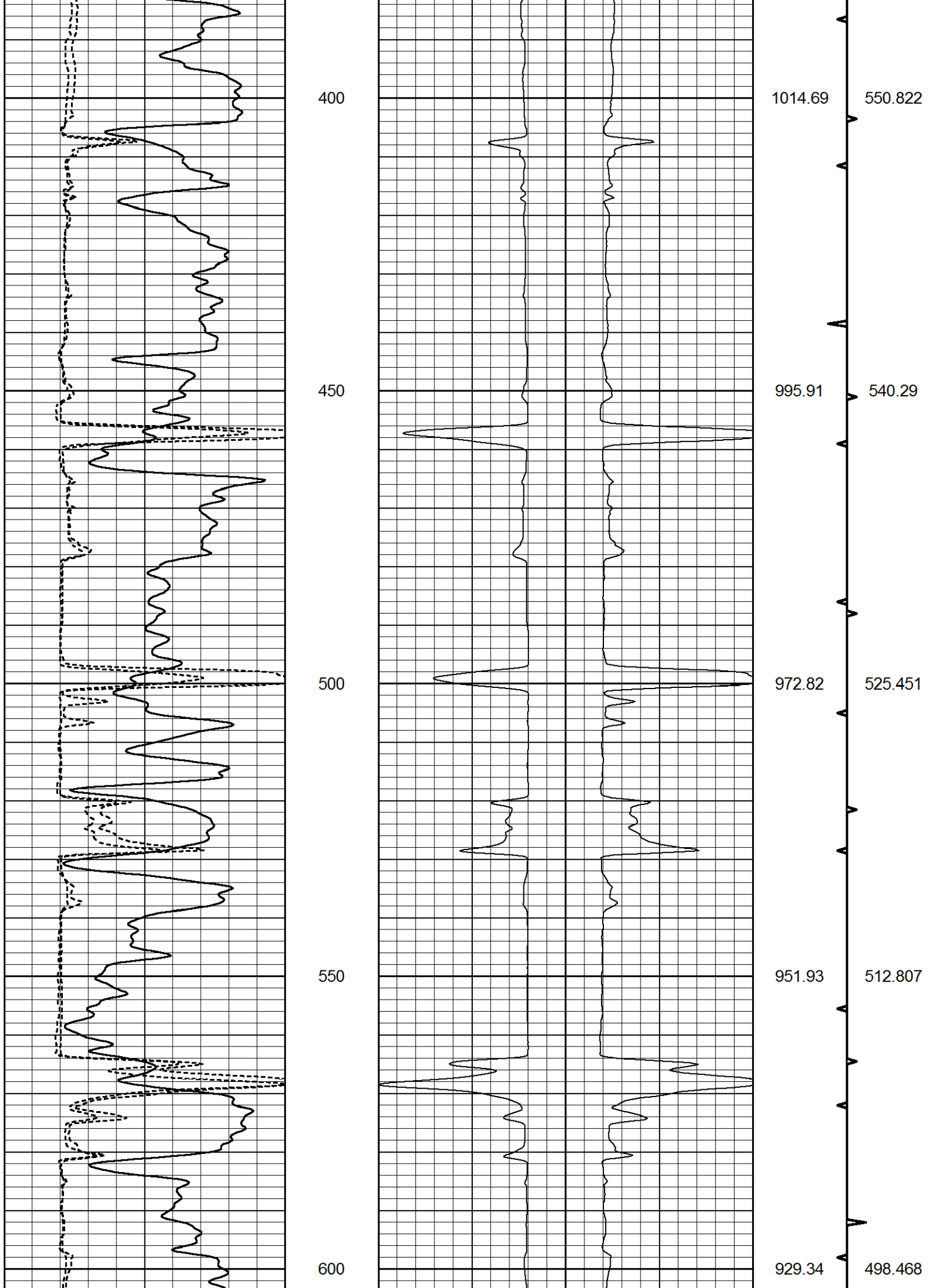


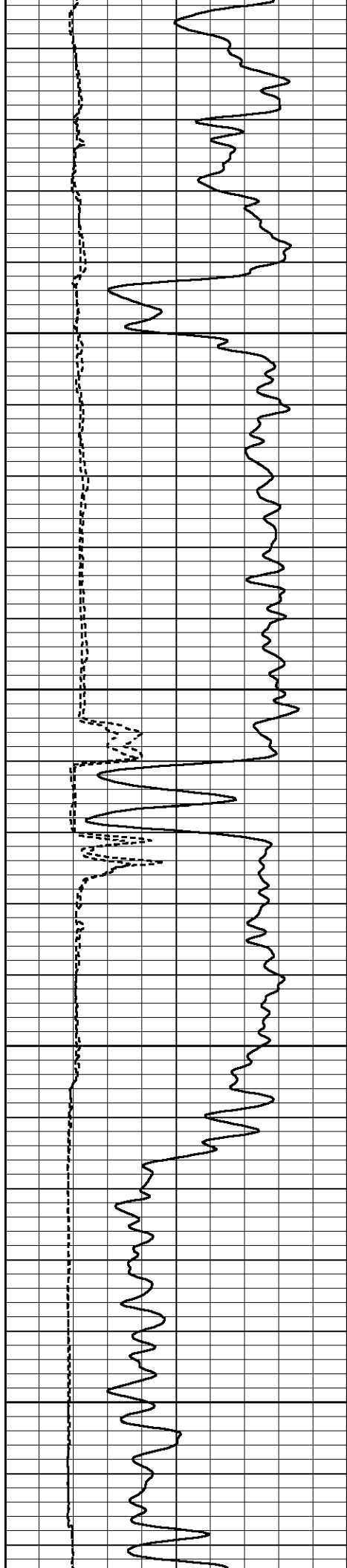
**MAIN SECTION**

Database File 7318pe.db  
 Dataset Pathname pass3.1L  
 Presentation Format obrbore  
 Dataset Creation Mon Aug 14 05:09:16 2023  
 Charted by Depth in Feet scaled 1:240

0	GR (GAPI)	150	LEFT CALIPER			RIGHT CALIPER			BVTX (ft3)	AVTX (ft3)
6	DCAL (in)	16	16	(in)	6	6	(in)	16	TBHV (ft3)	ABHV (ft3)
6	MELCAL (in)	16								





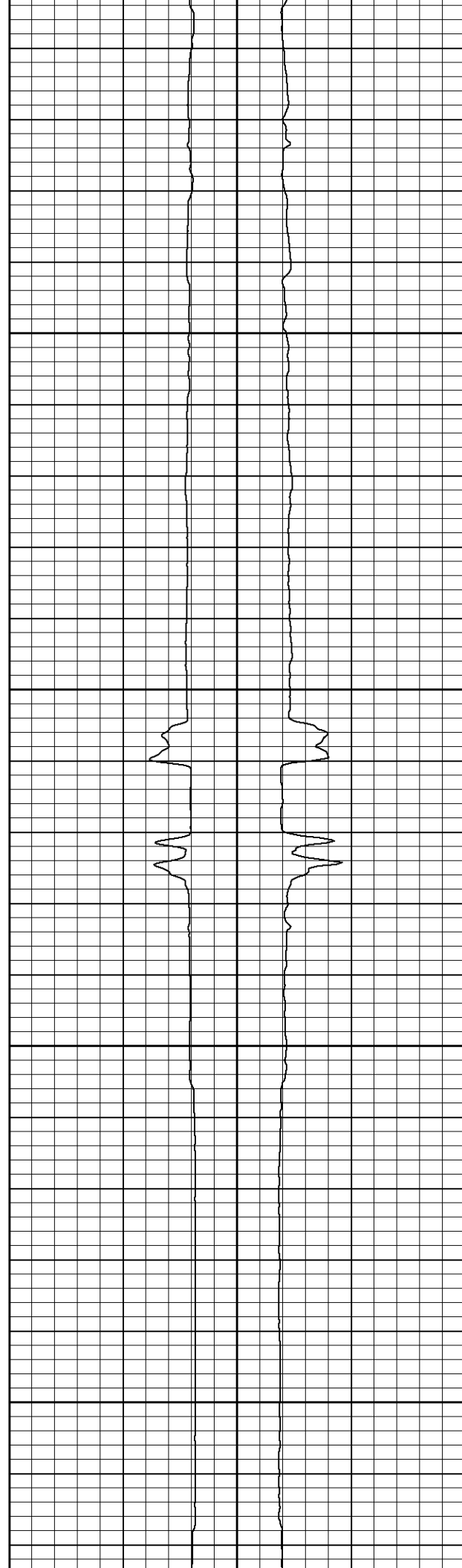


650

700

750

800



911.31

892.59

873.06

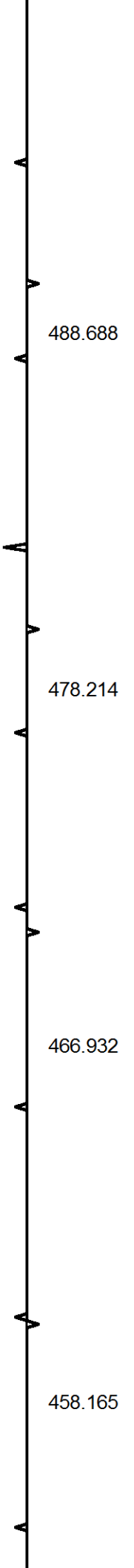
856.04

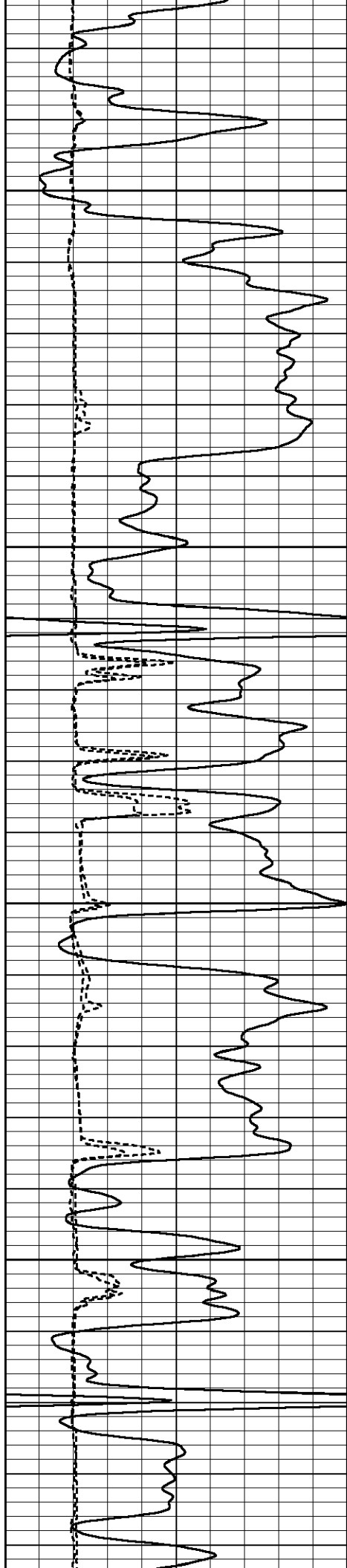
488.688

478.214

466.932

458.165



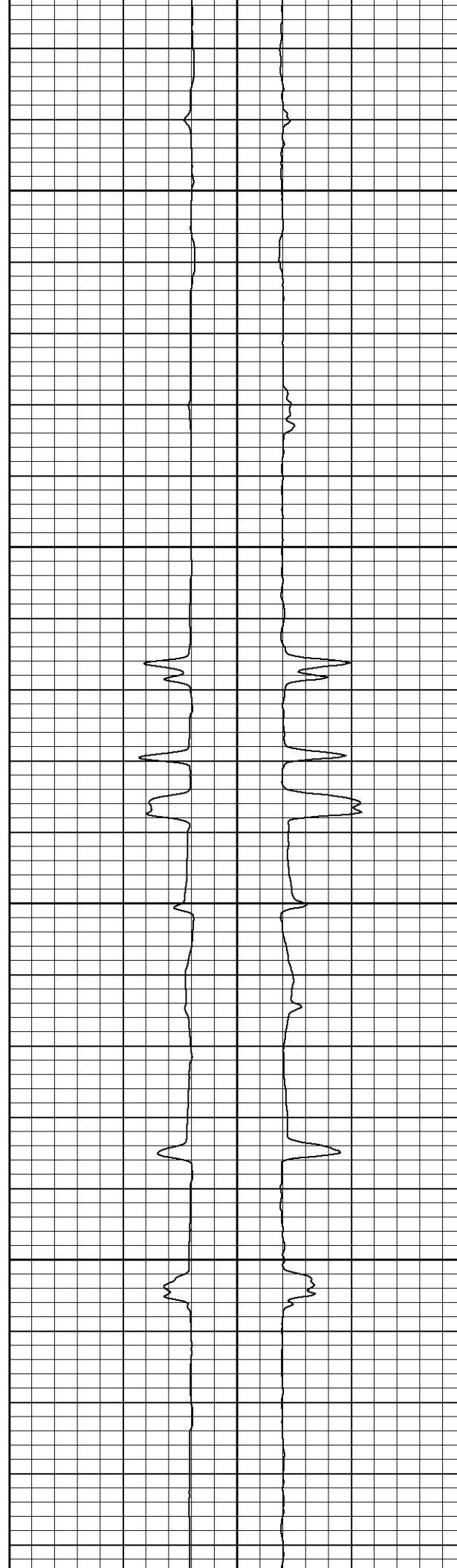


850

900

950

1000



838.87

821.31

801.57

783.10

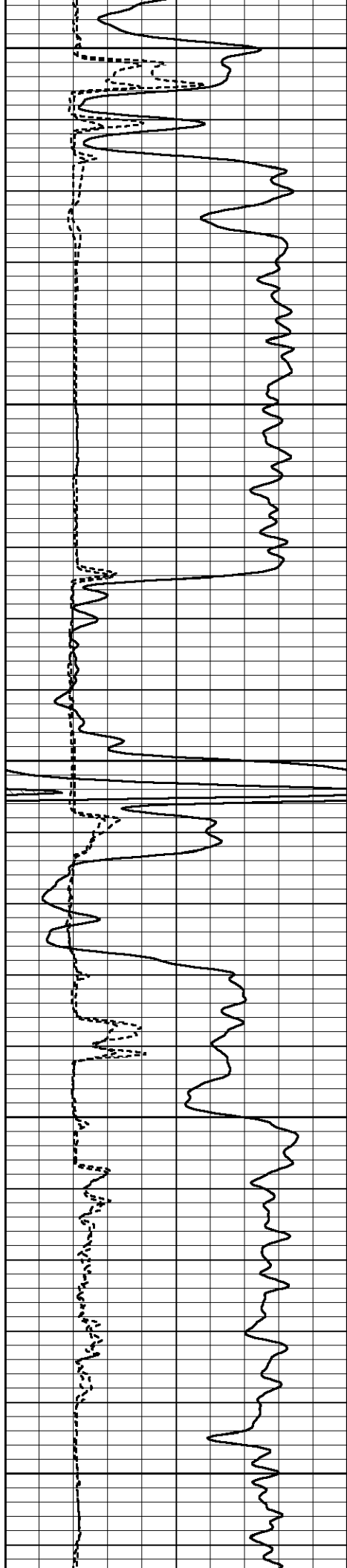
449.243

439.936

428.442

418.217





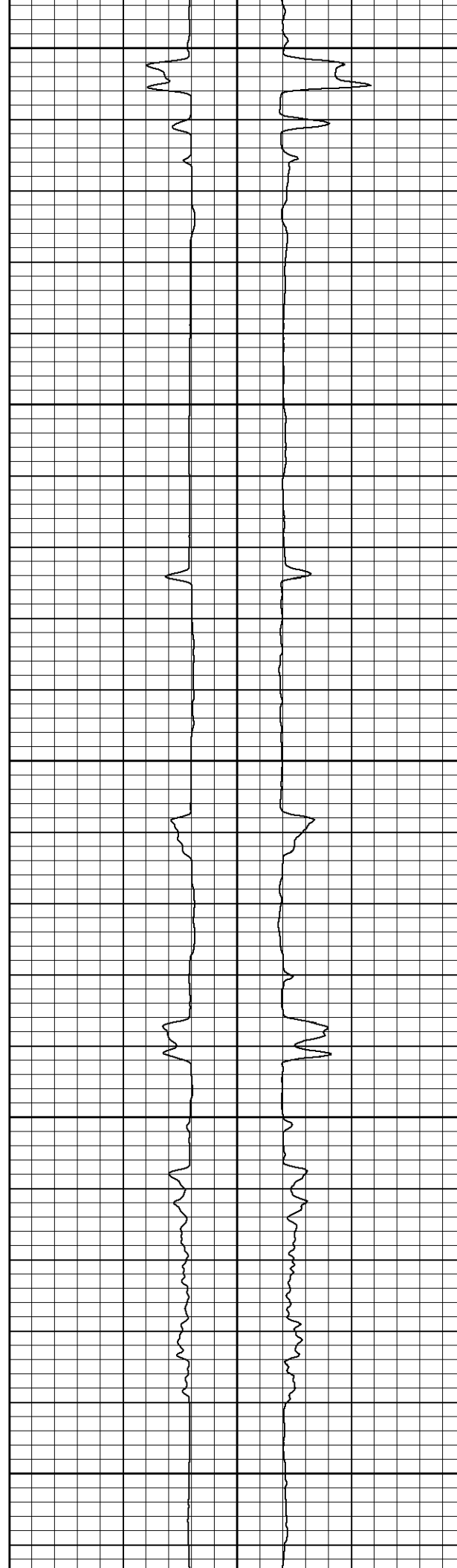
1050

1100

1150

1200

1250



765.18

746.06

728.49

709.99

691.00

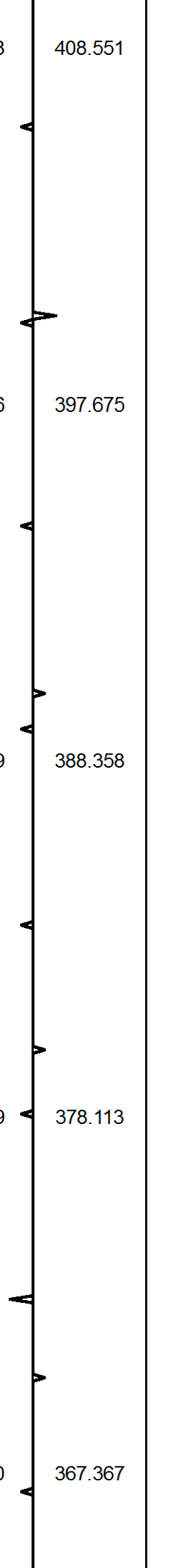
408.551

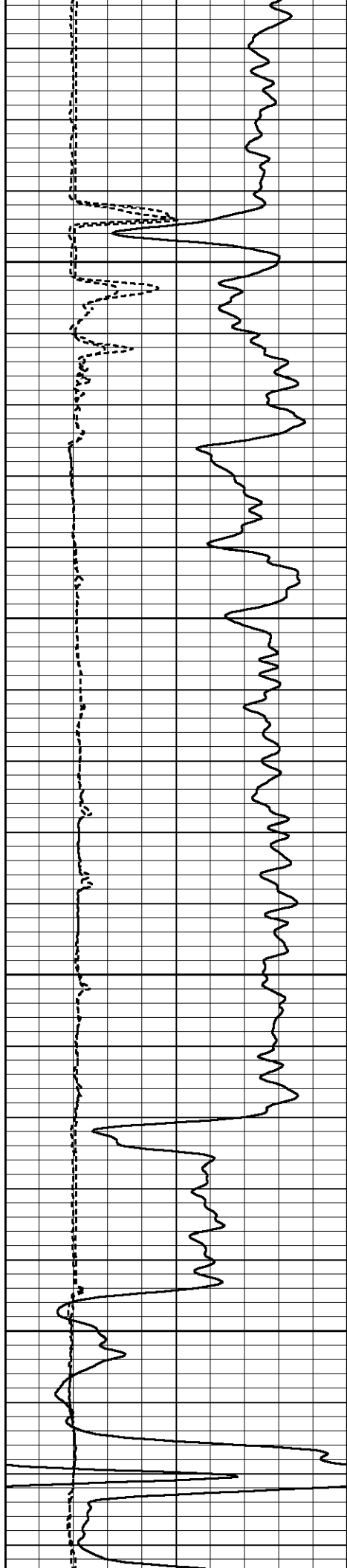
397.675

388.358

378.113

367.367



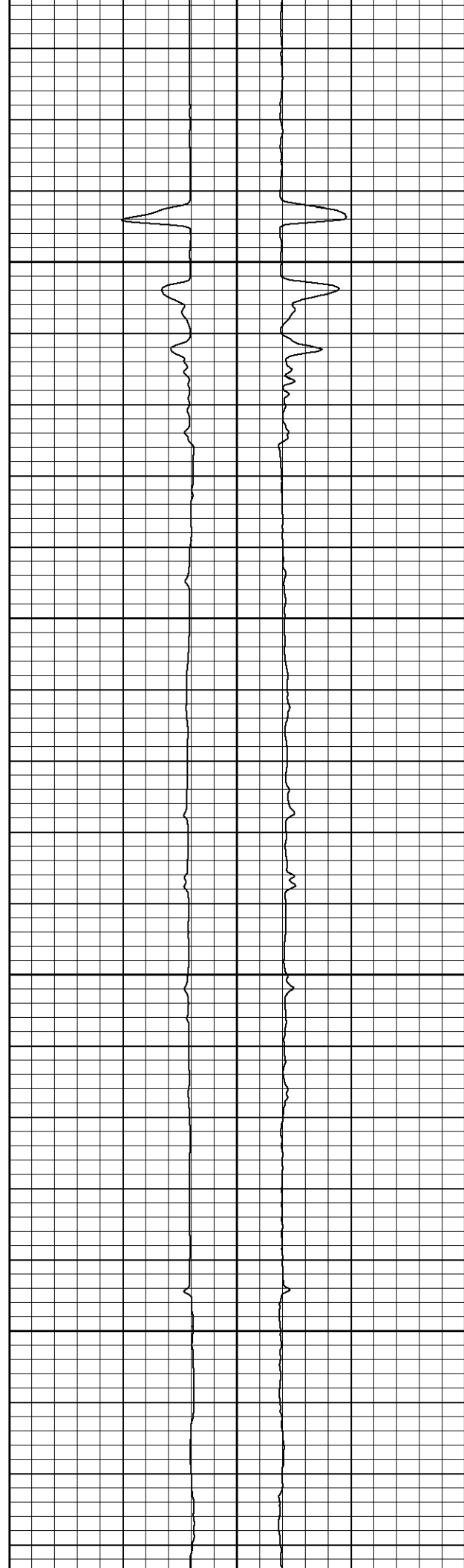


1300

1350

1400

1450



672.96

654.48

636.24

618.61

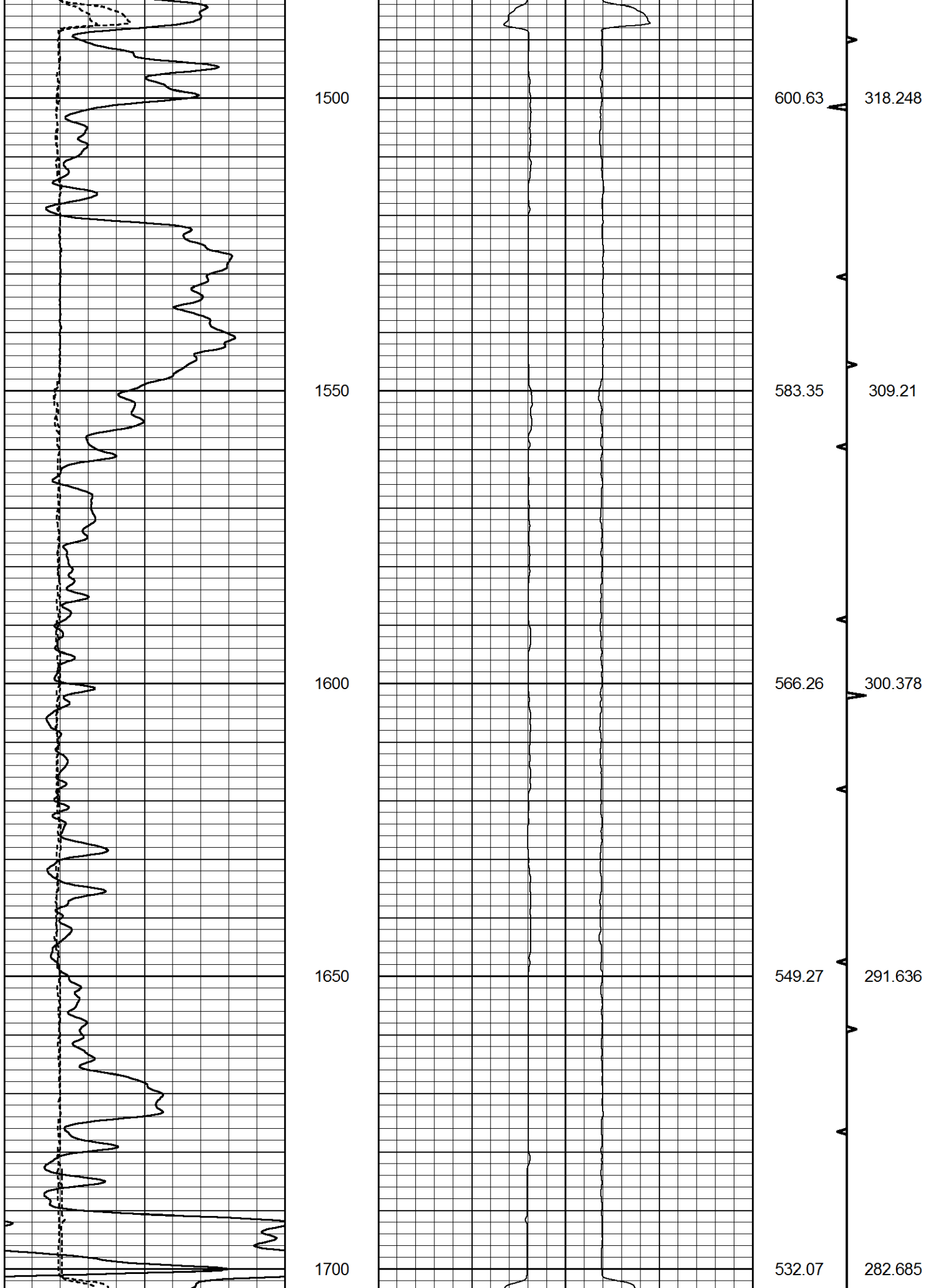
357.581

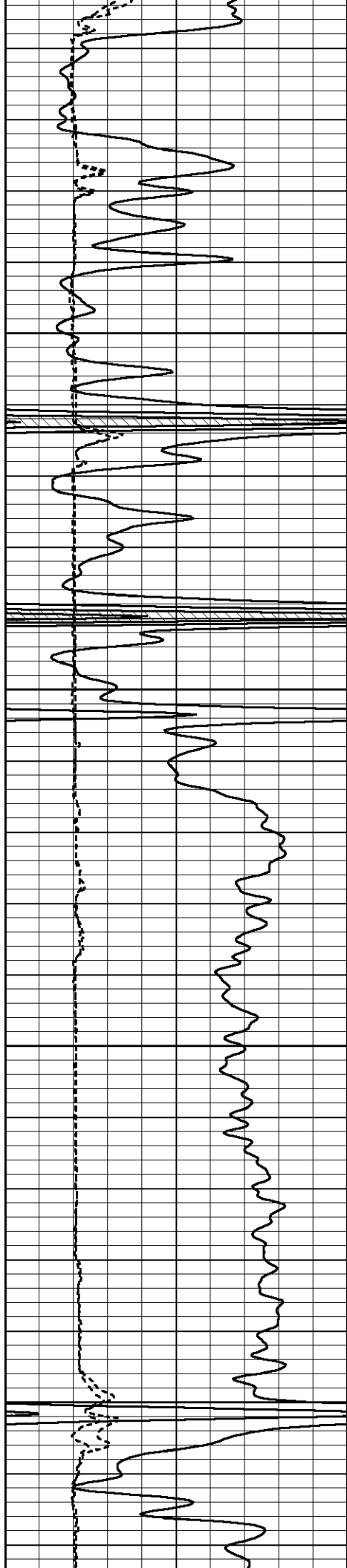
347.348

337.352

327.972





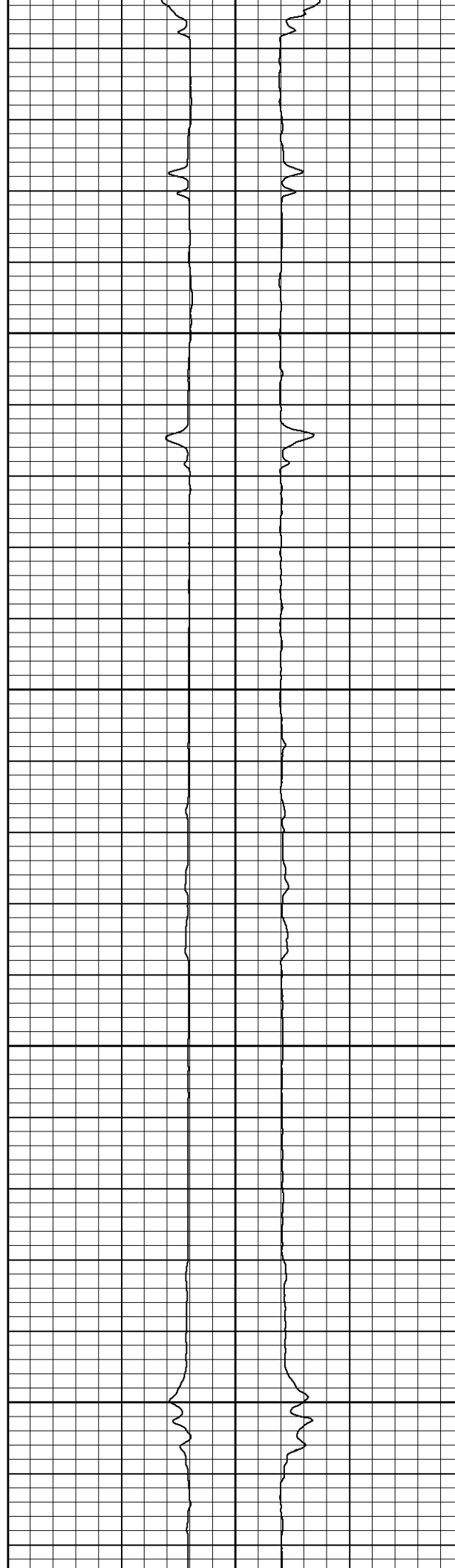


1750

1800

1850

1900



513.88

496.18

478.34

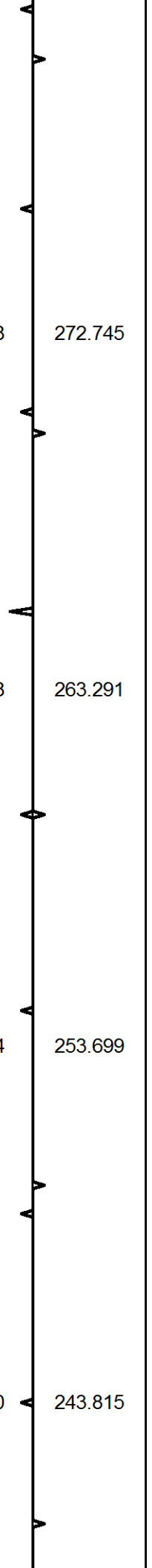
460.20

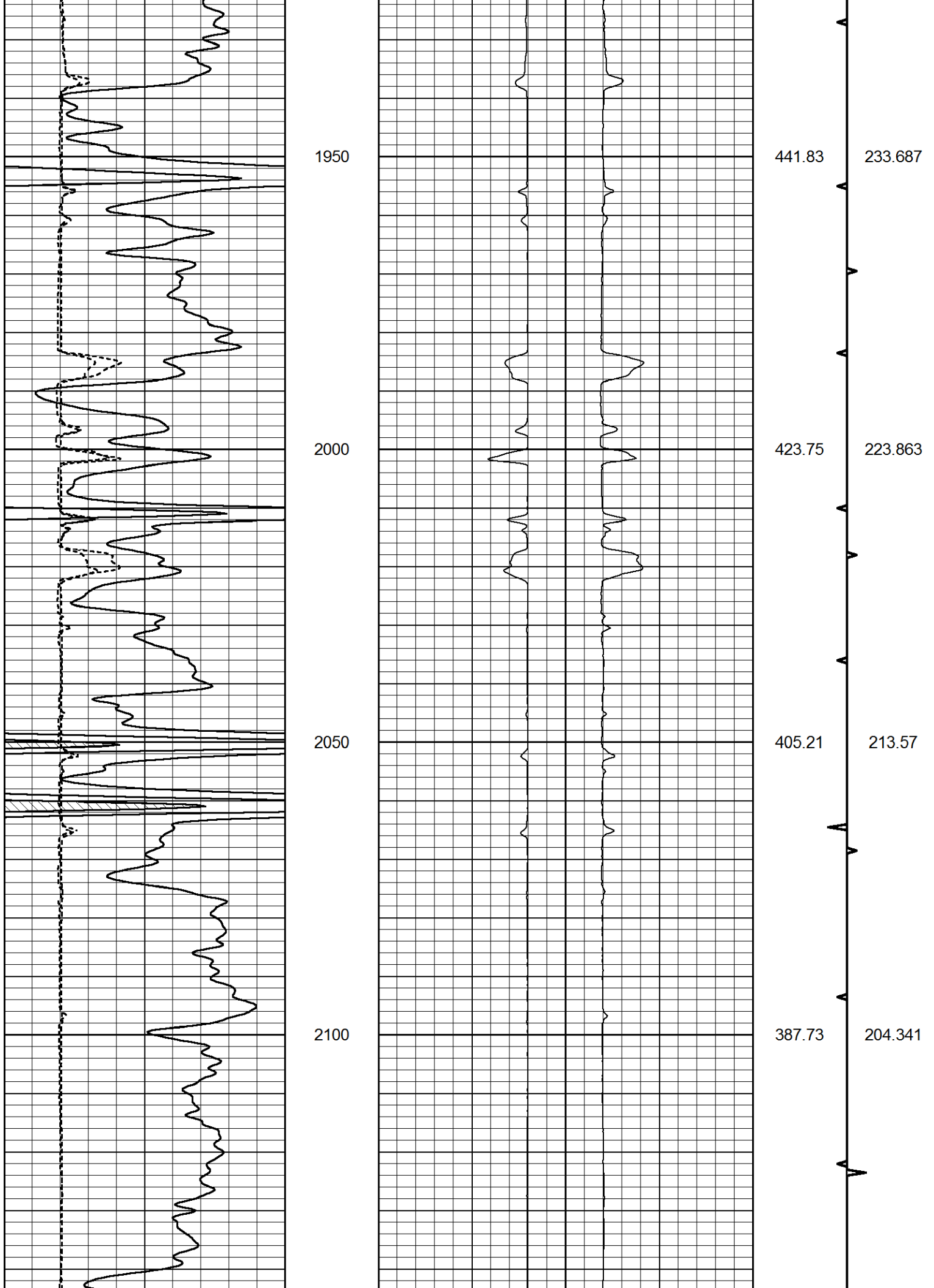
272.745

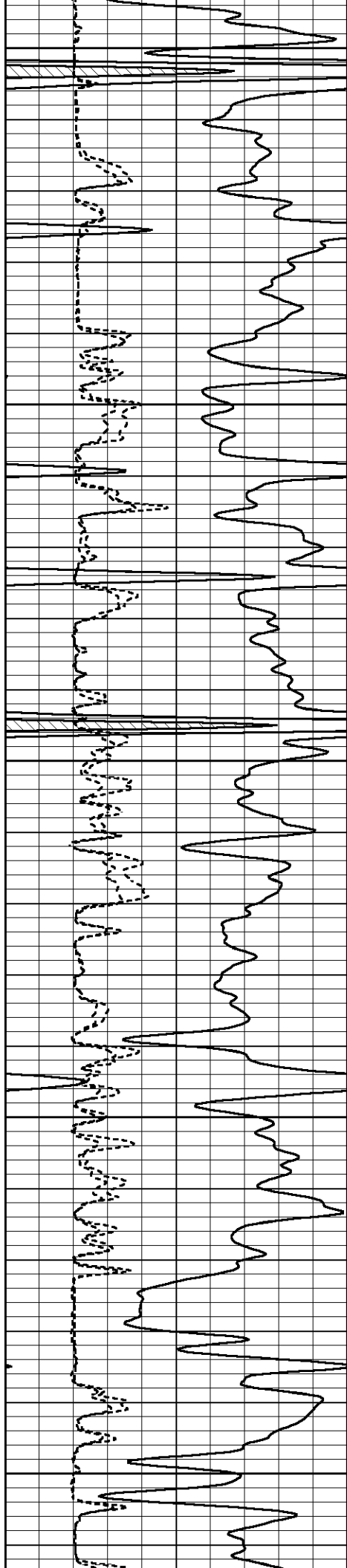
263.291

253.699

243.815







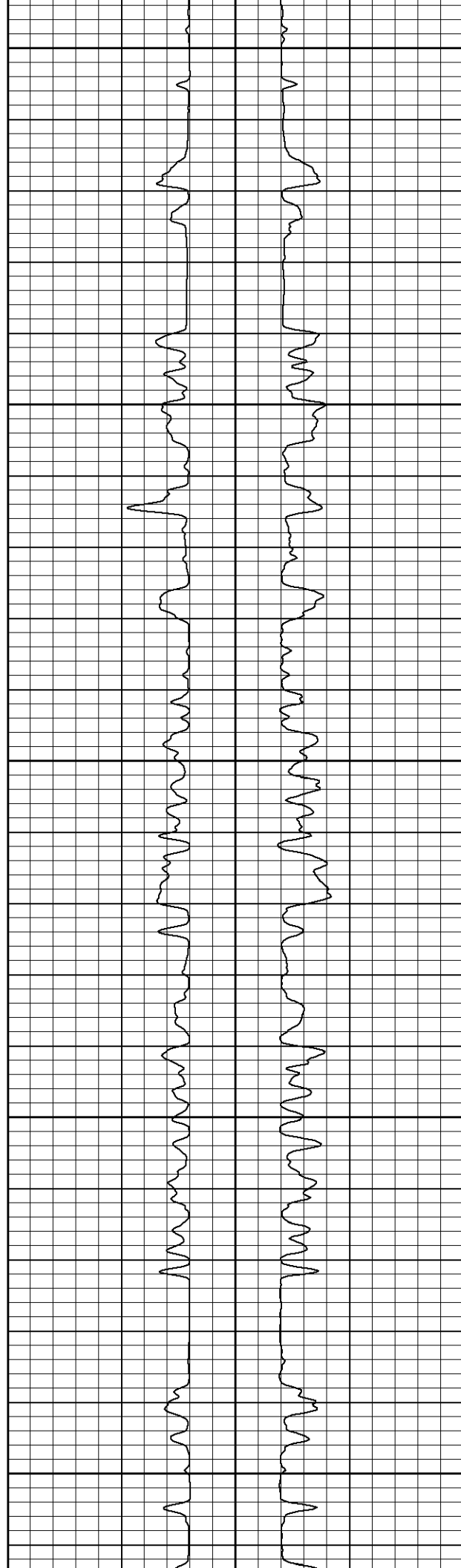
2150

2200

2250

2300

2350



370.22

350.76

330.30

309.17

289.59

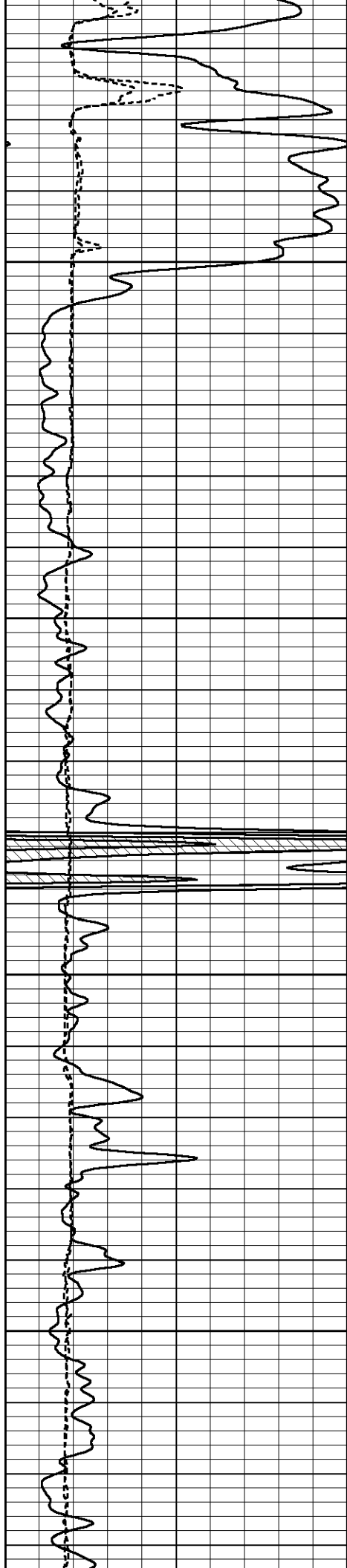
195.076

183.871

171.654

158.779

147.442

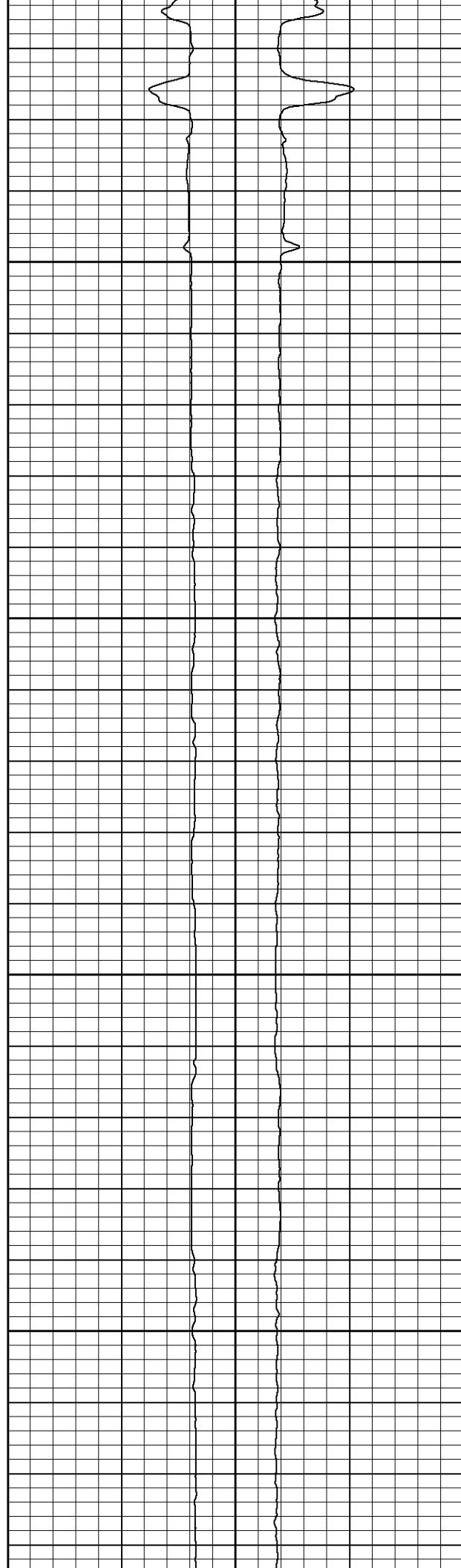


2400

2450

2500

2550



270.26

253.23

236.42

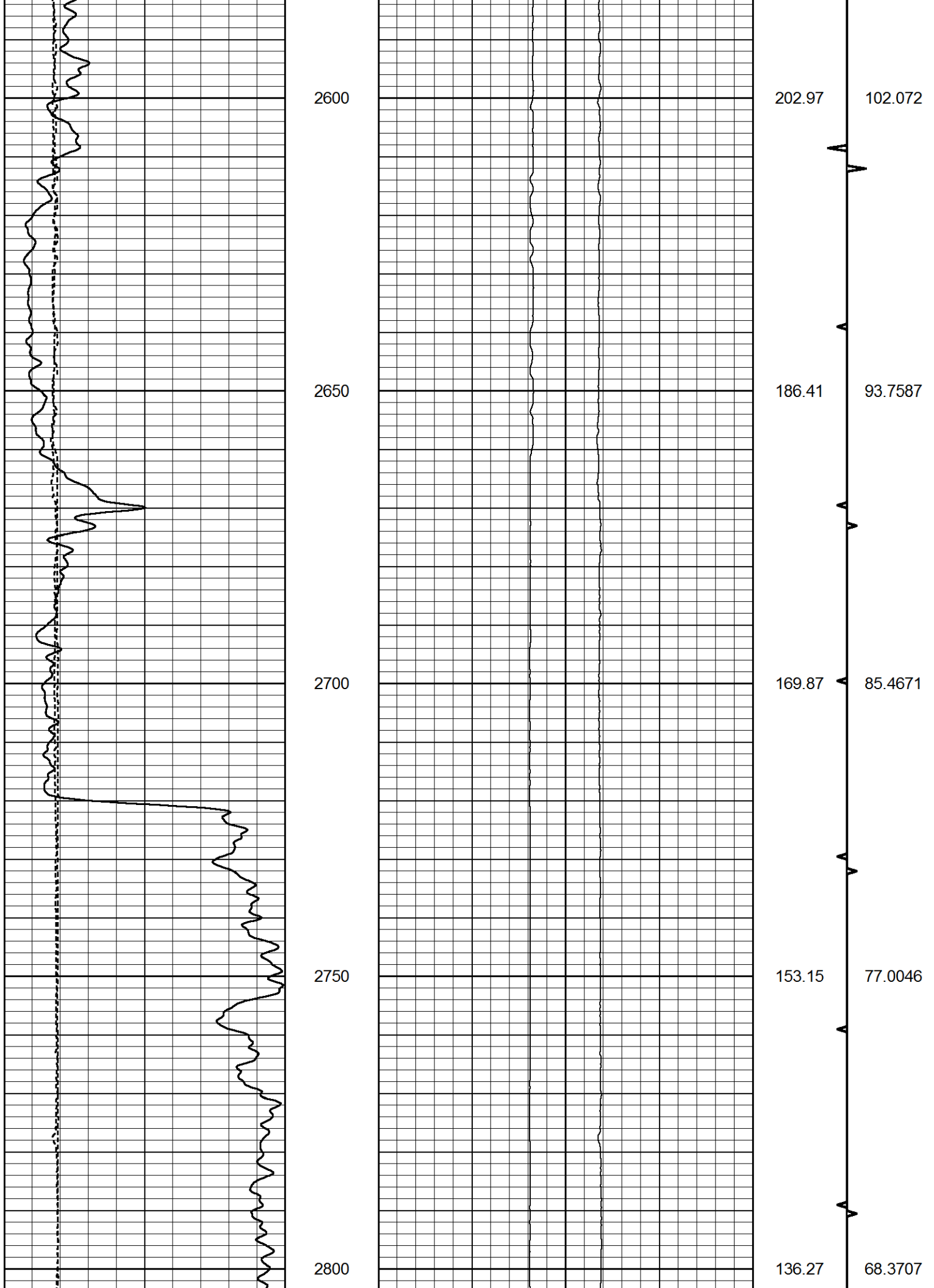
219.58

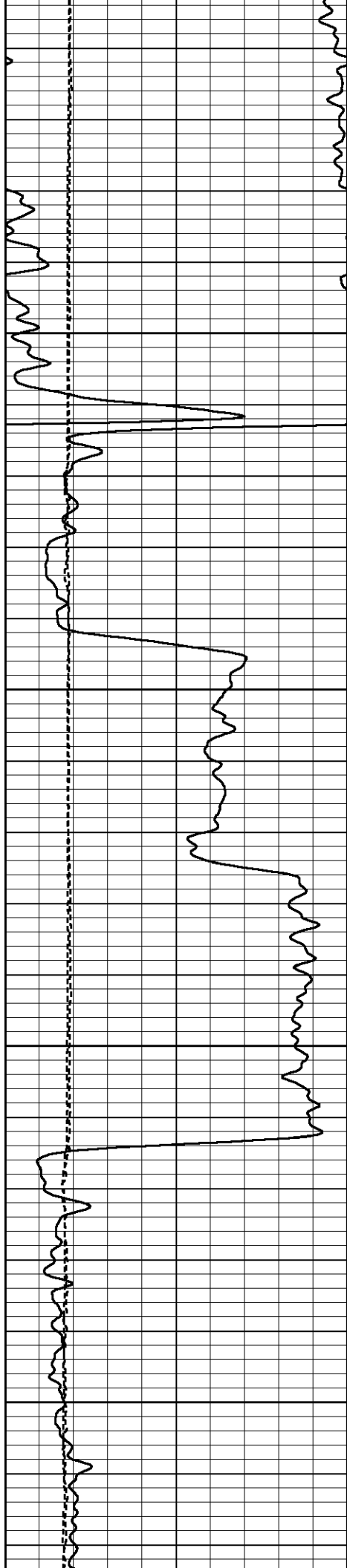
136.36

127.579

119.025

110.434



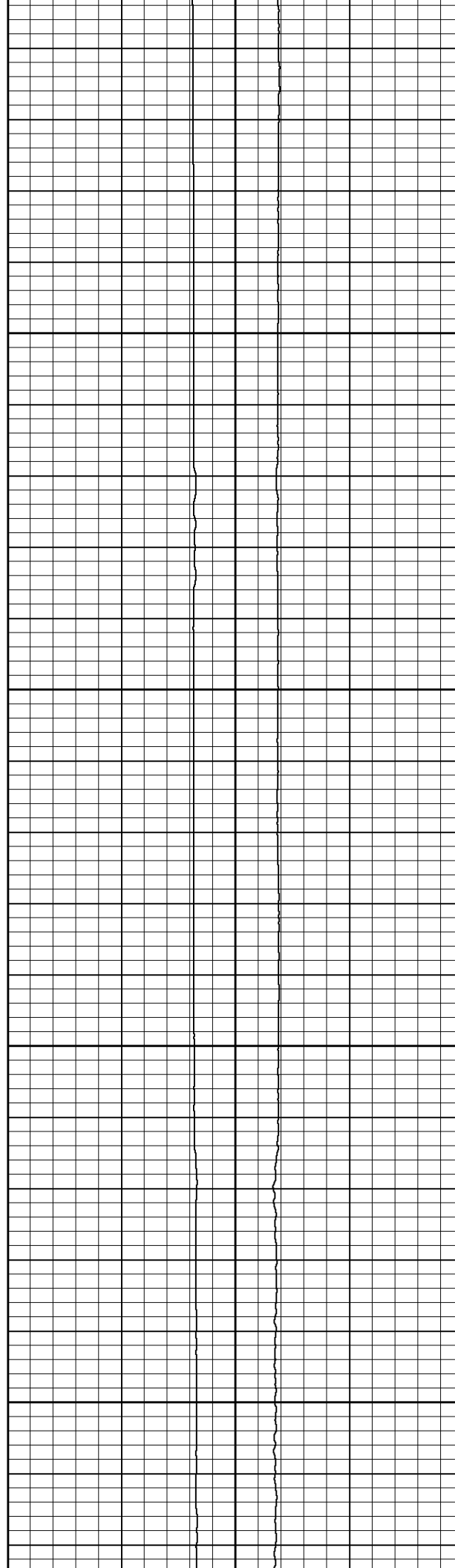


2850

2900

2950

3000



119.30

102.48

85.56

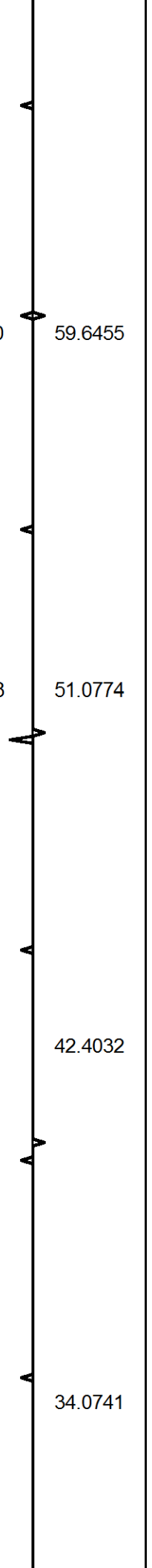
68.98

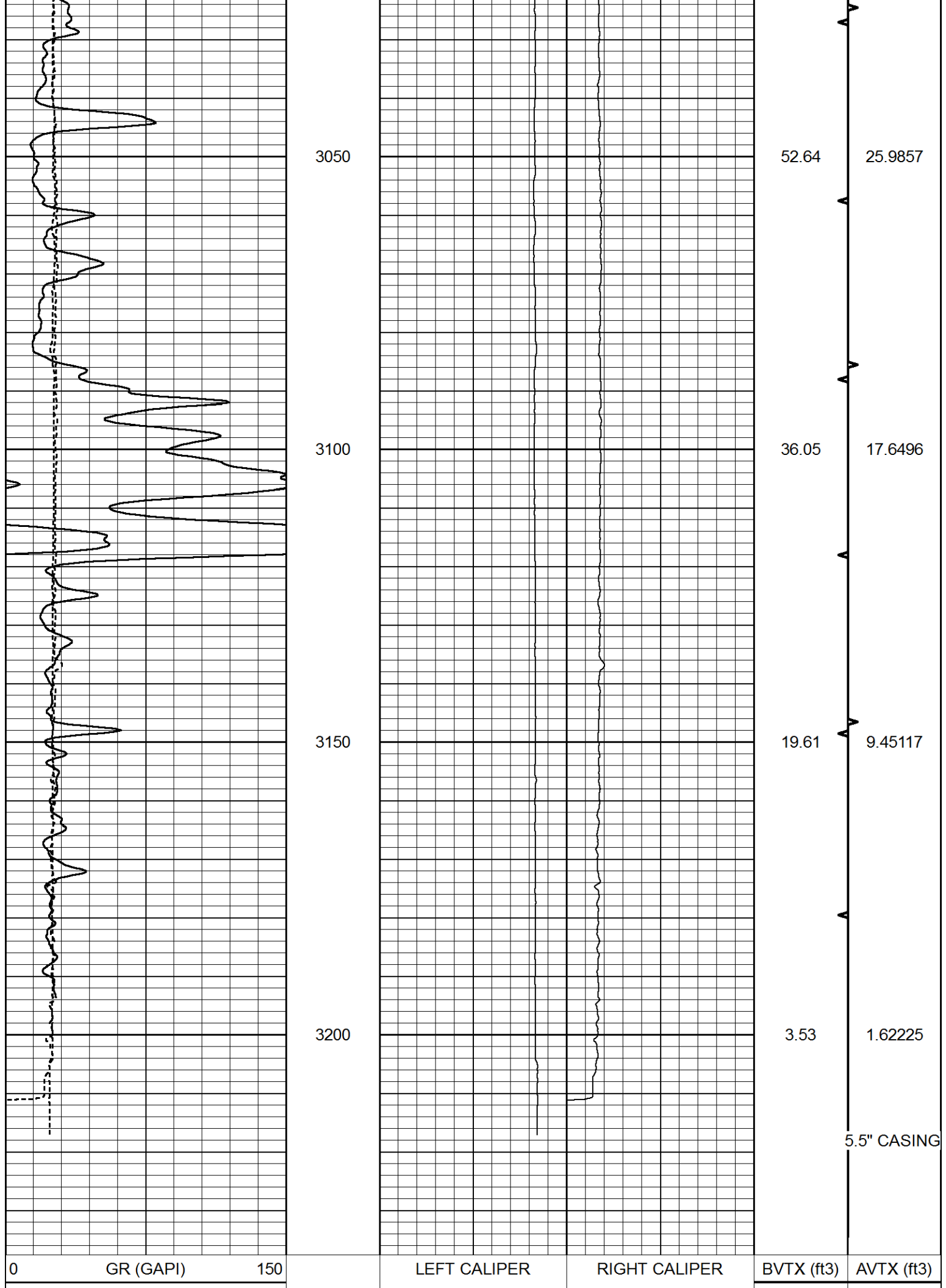
59.6455

51.0774

42.4032

34.0741





6	DCAL (in)	16	16	(in)	6	6	(in)	16	TBHV (ft3)	ABHV (ft3)
6	MELCAL (in)	16								