



**DUAL RECEIVER
CEMENT BOND
NEUTRON LOG**

Company JASPAR COMPANY
Well FEDERAL LAND BANK #1 "OWWO"
Field
County ROOKS
State KANSAS Country USA

Company JASPAR COMPANY
Well FEDERAL LAND BANK #1 "OWWO"
Field
County ROOKS
State KANSAS Country USA

Location: API #: 15-163-00069-00-01
SEC 11 TWP 6S RGE 20W
SW-NE-SW-NE
3536' FSL & 662' FWL
Permanent Datum GROUND LEVEL Elevation 2158
Log Measured From KELLY BUSHING 5' A.G.L.
Drilling Measured From KELLY BUSHING
Other Services
Elevation
K.B. 2163
D.F. 2161
G.L. 2158

Date	8/14/2023						
Run Number	ONE						
Depth Driller	3639						
Depth Logger	3585						
Bottom Logged Interval	3584						
Top Log Interval	2800						
Open Hole Size	WATER						
Type Fluid	WATER						
Density / Viscosity							
Max. Recorded Temp.	2988						
Estimated Cement Top	2988						
Time Well Ready							
Time Logger on Bottom	3362						
Equipment Number	3362						
Location	HAYS, KANSAS						
Recorded By	DAN GOTTSCHALK						
Witnessed By	SHANE VEHIGE						
Borehole Record		Tubing Record					
Run Number	Bit	From	To	Size	Weight	From	To
ONE	12-1/4"	0					
TWO	7-7/8"						
Casing Record	Size	Wgt/Ft		Top	Bottom		
Surface String	10-1/4"	0		0	180		
Prot. String	5-1/2"			0			
Production String							
Liner							

<<< Fold Here >>>

All interpretations are opinions based on inferences from electrical or other measurements and we cannot and do not guarantee the accuracy or correctness of any interpretation, and we shall not, except in the case of gross or willful negligence on our part, be liable or responsible for any loss, costs, damages, or expenses incurred or sustained by anyone resulting from any interpretation made by any of our officers, agents or employees. These interpretations are also subject to our general terms and conditions set out in our current Price Schedule.

Comments

**THANK YOU FOR USING ELI WIRELINE SERVICES
HAYS, KANSAS (785)628-6395**

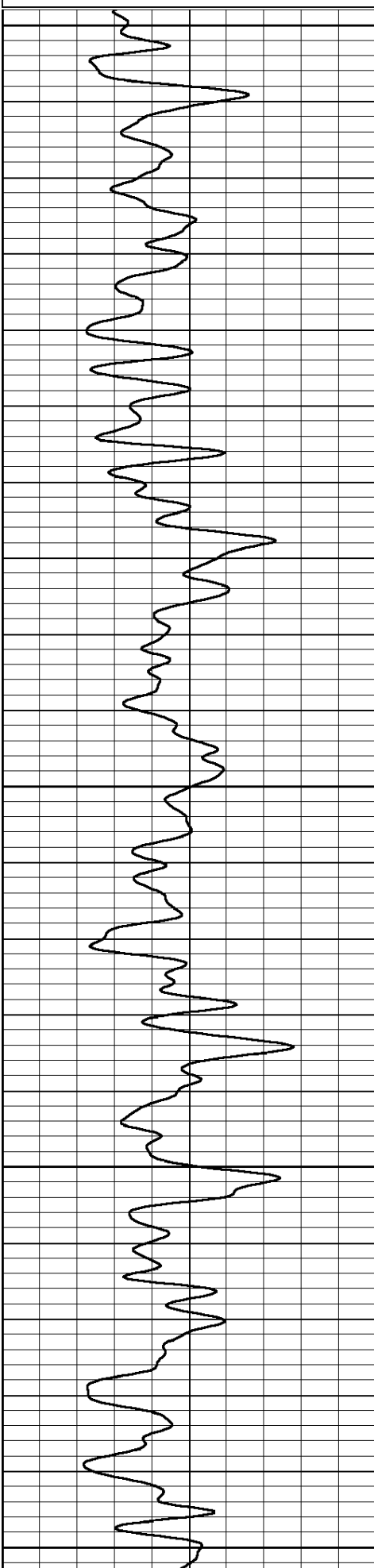
**DIRECTIONS: STOCKTON - 9 NORTH TO RD. A - 13 WEST TO RD. 5 - 3/4 NORTH
EAST AND SOUTH INTO AT CATTLEGUARD**

Database File: 8151bgr.db
Dataset Pathname: pass2.5
Presentation Format: gr-n-ccl
Dataset Creation: Mon Aug 14 15:37:51 2023
Charted by: Depth in Feet scaled 1:240

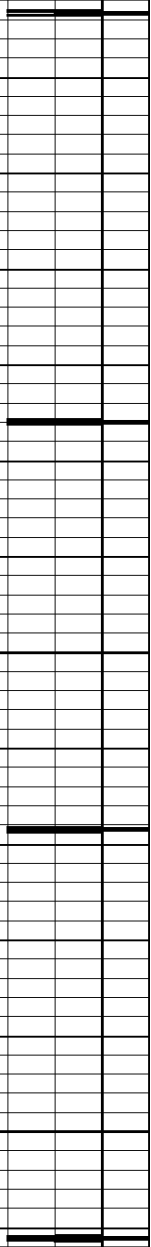
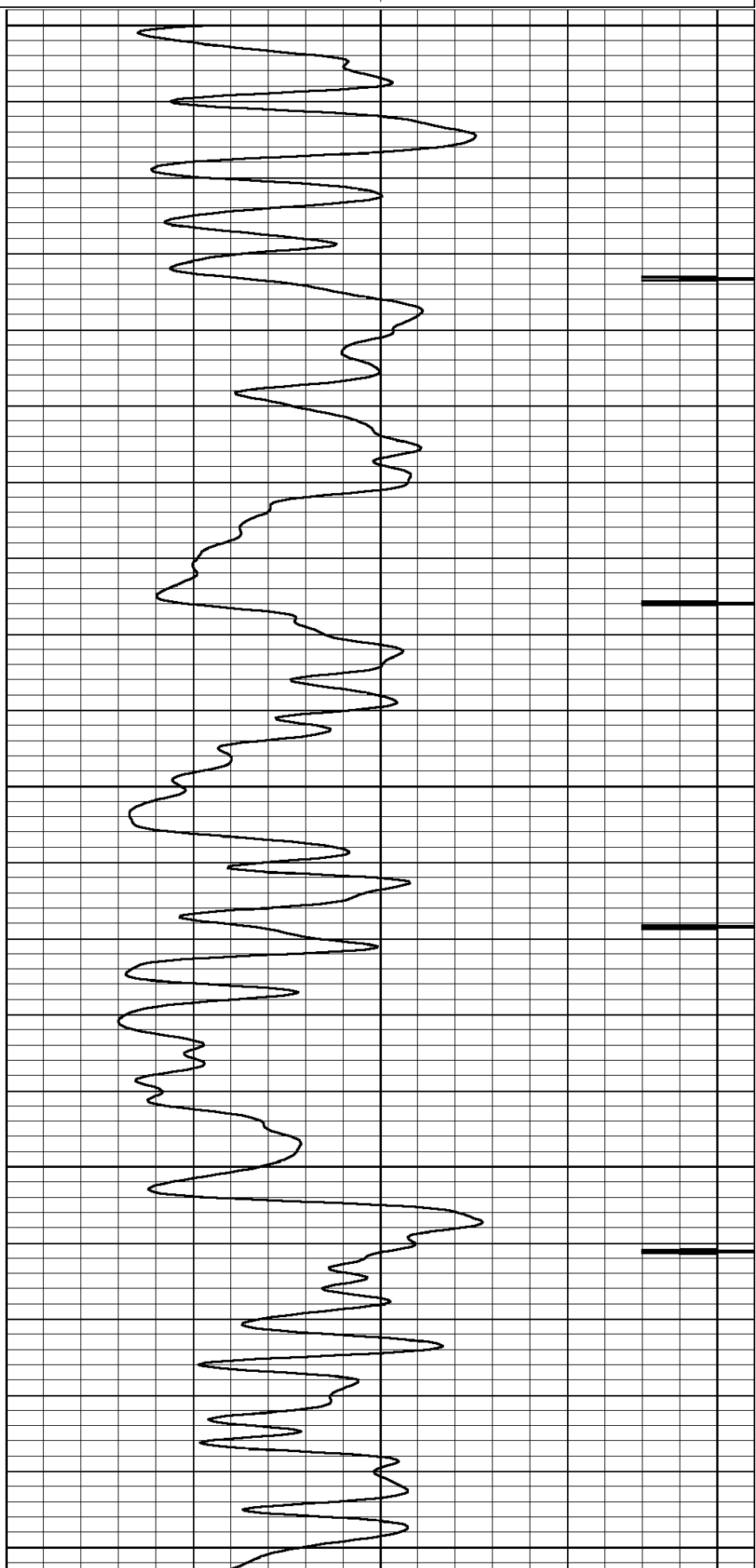
0 GR (GAPI) 150

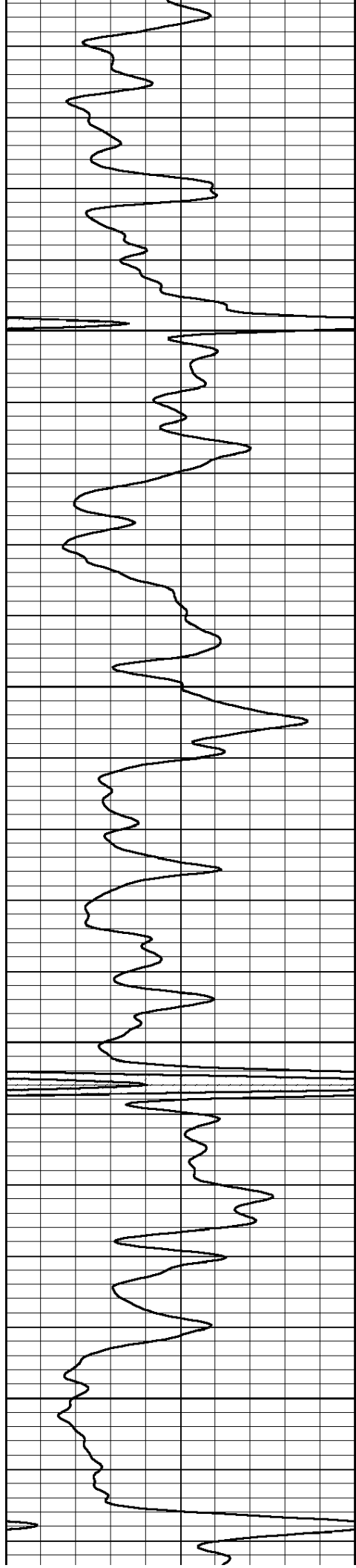
0 NEUTRON (NAPI) 1000

9 CCL -1



3000
3050
3100
3150
3200



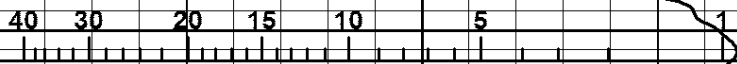
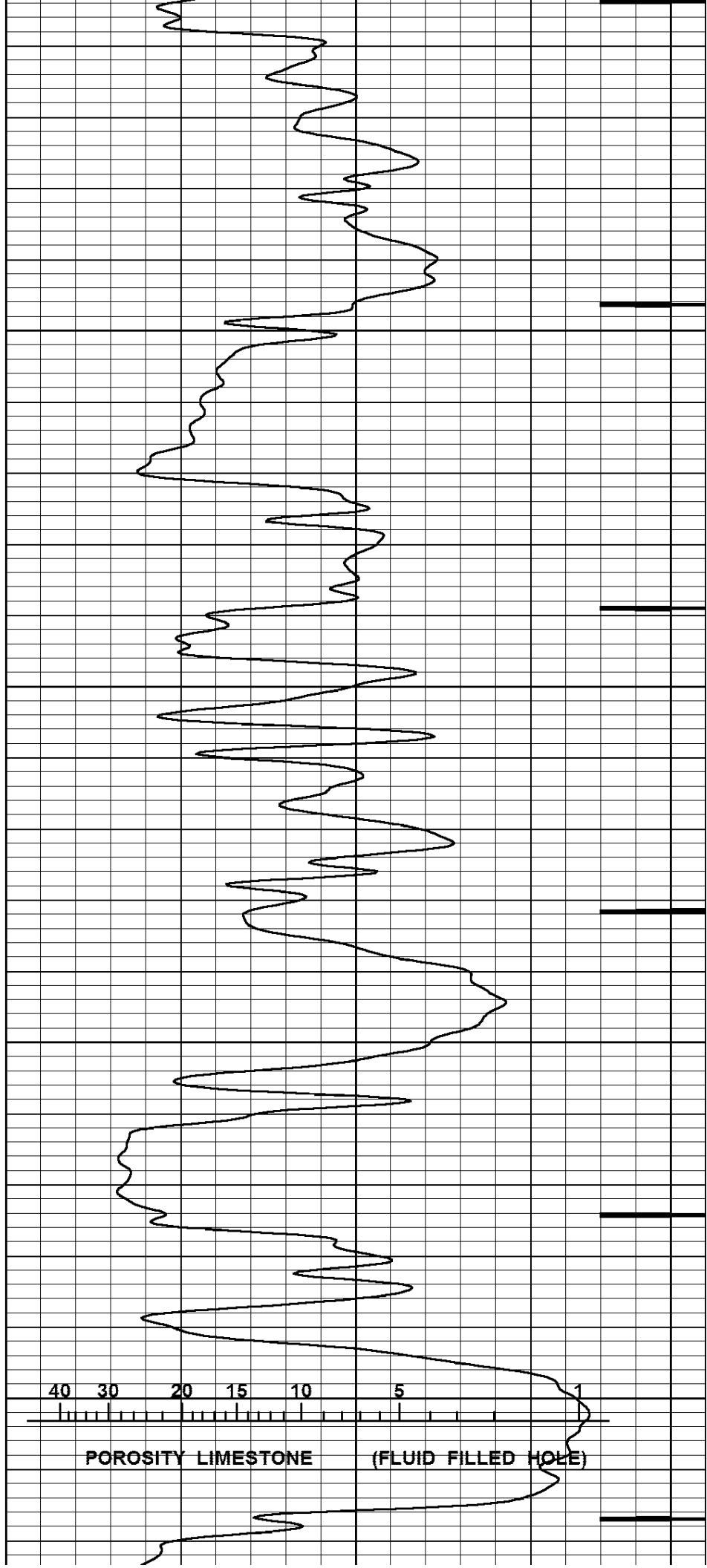


3250

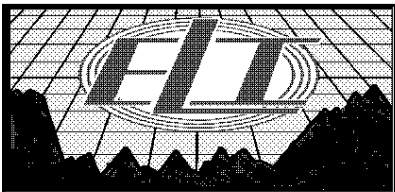
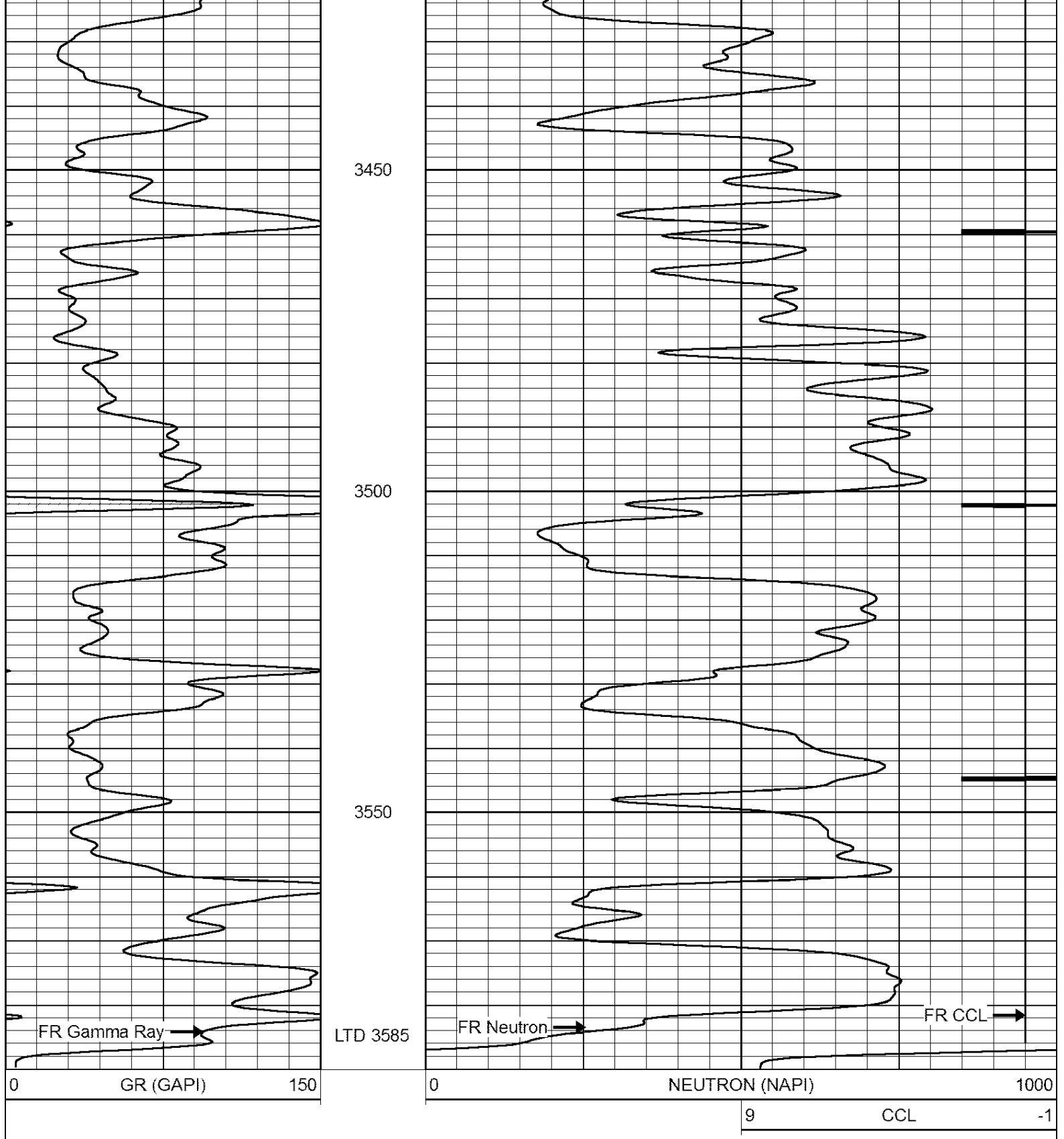
3300

3350

3400



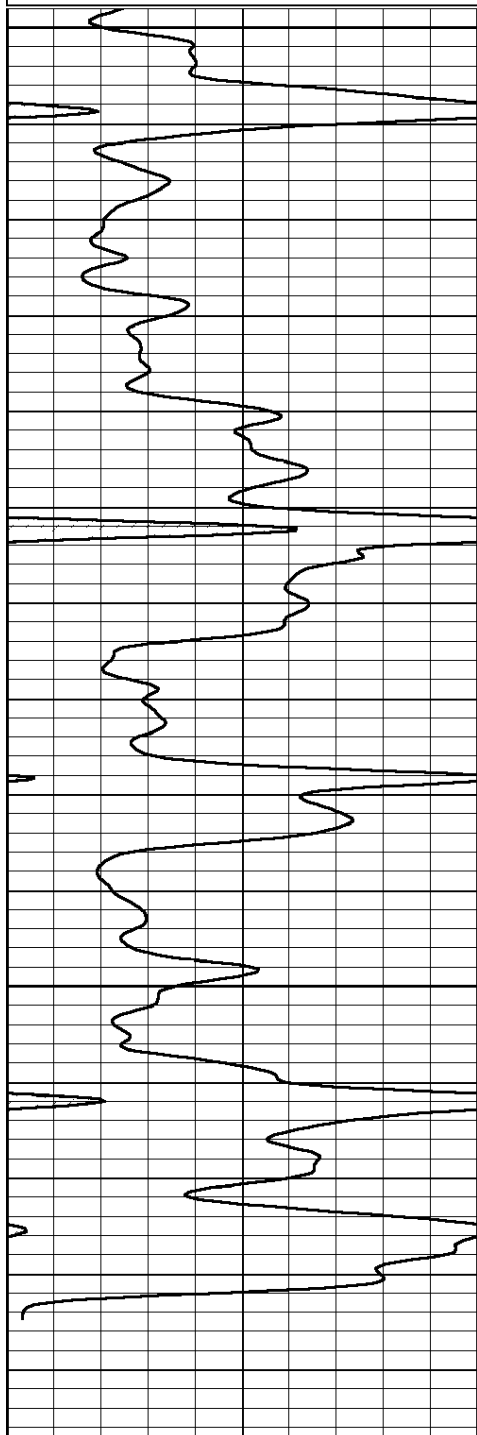
POROSITY LIMESTONE (FLUID FILLED HOLE)



REPEAT SECTION

Database File: 8151bgr.db
 Dataset Pathname: pass5.1
 Presentation Format: gr-n-ccl
 Dataset Creation: Mon Aug 14 15:15:23 2023 by Calc 7.0 B1
 Charted by: Depth in Feet scaled 1:240

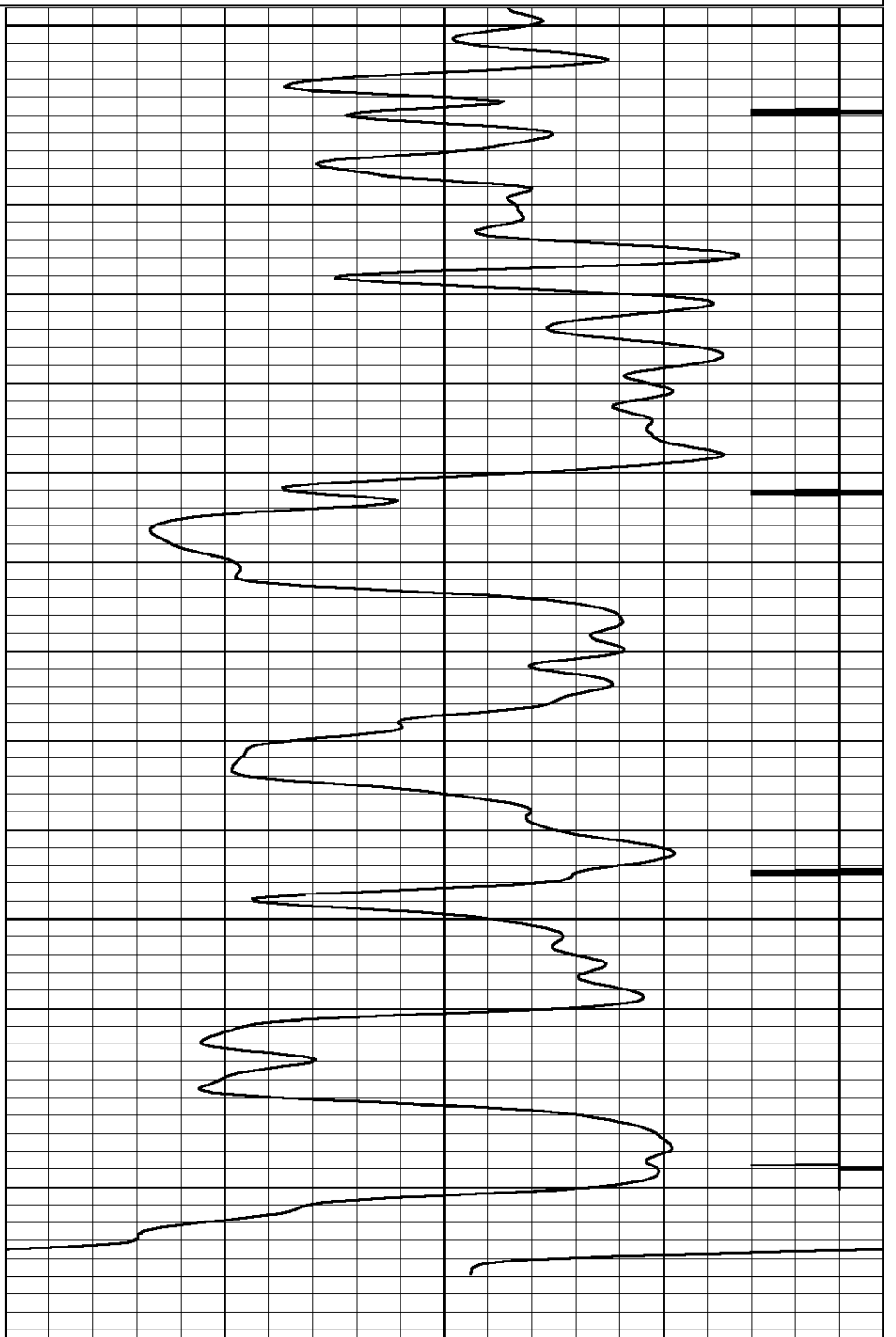
0 GR (GAPI) 150



0 GR (GAPI) 150

0 NEUTRON (NAPI) 1000

9 CCL -1



0 NEUTRON (NAPI) 1000

9 CCL -1

Database File: 8151bgr.db
 Dataset Pathname: pass3.1
 Presentation Format: dcbl02
 Dataset Creation: Mon Aug 14 14:29:05 2023 by Calc 7.0 B1
 Charted by: Depth in Feet scaled 1:240

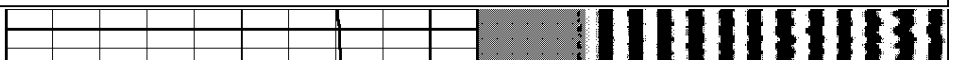
0 Gamma Ray (GAPI) 150
 200 5' Travel Time (usec) 1000

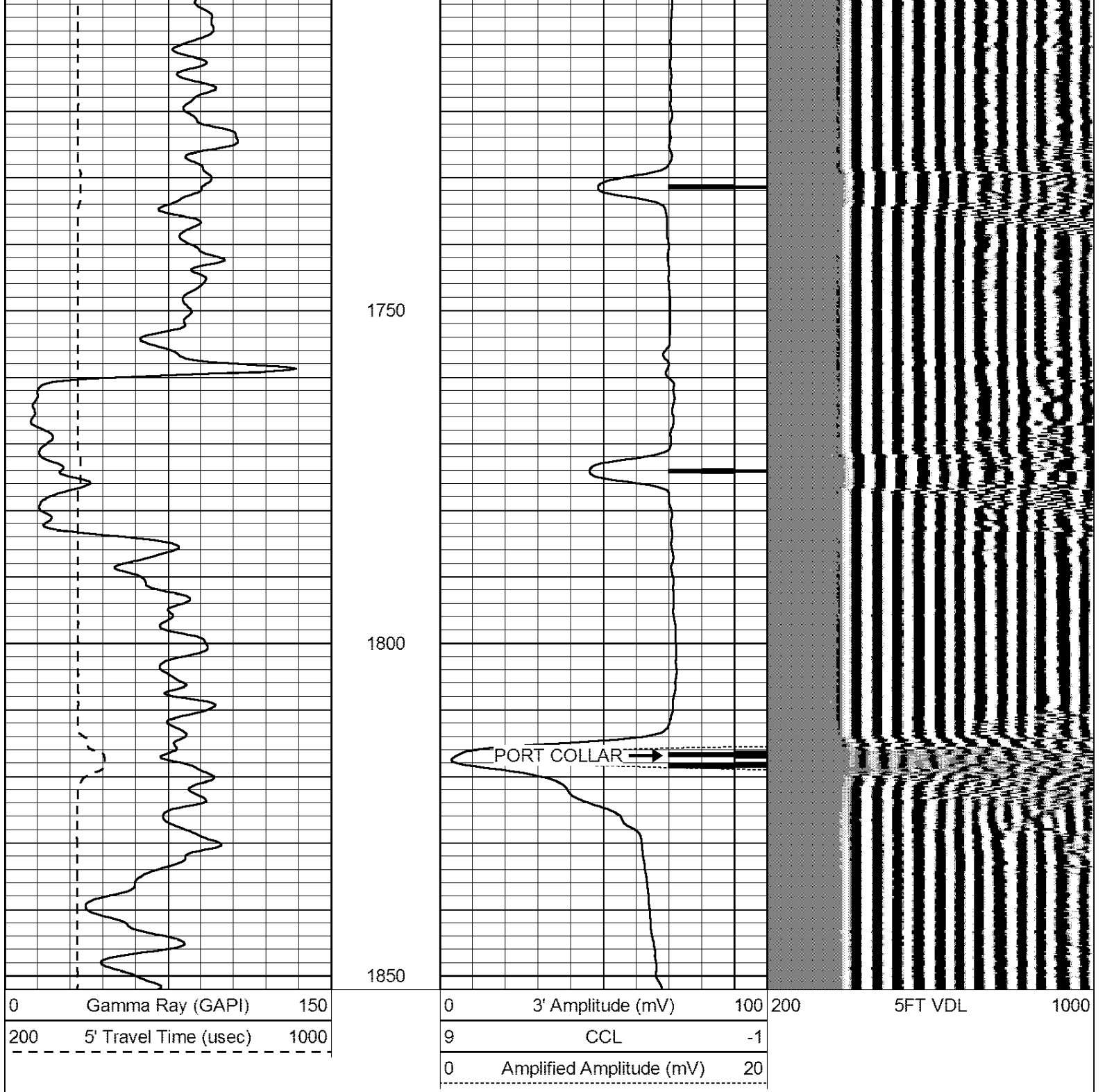
0 3' Amplitude (mV) 100 200 5FT VDL 1000
 9 CCL -1

0 Amplified Amplitude (mV) 20

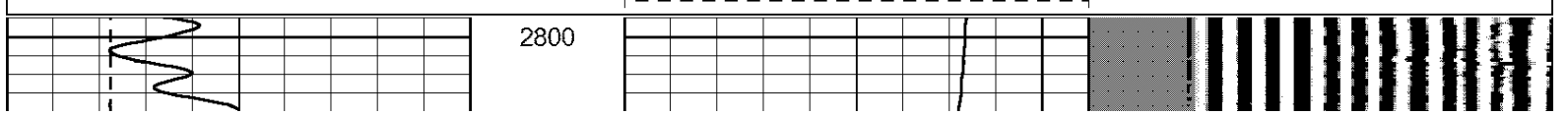
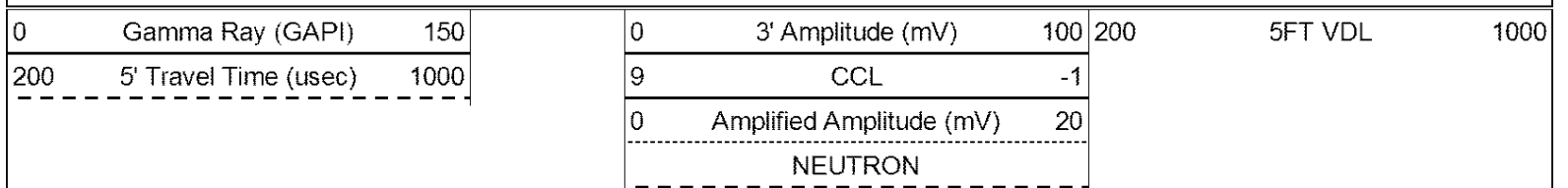


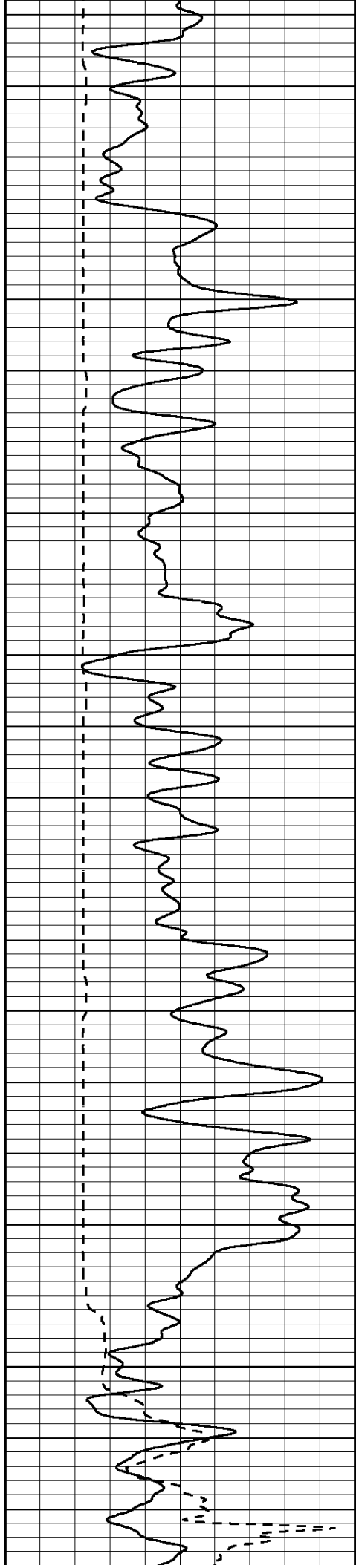
1700





Database File: 8151bgr.db
 Dataset Pathname: pass2.5
 Presentation Format: dcbl03
 Dataset Creation: Mon Aug 14 15:37:51 2023
 Charted by: Depth in Feet scaled 1:240





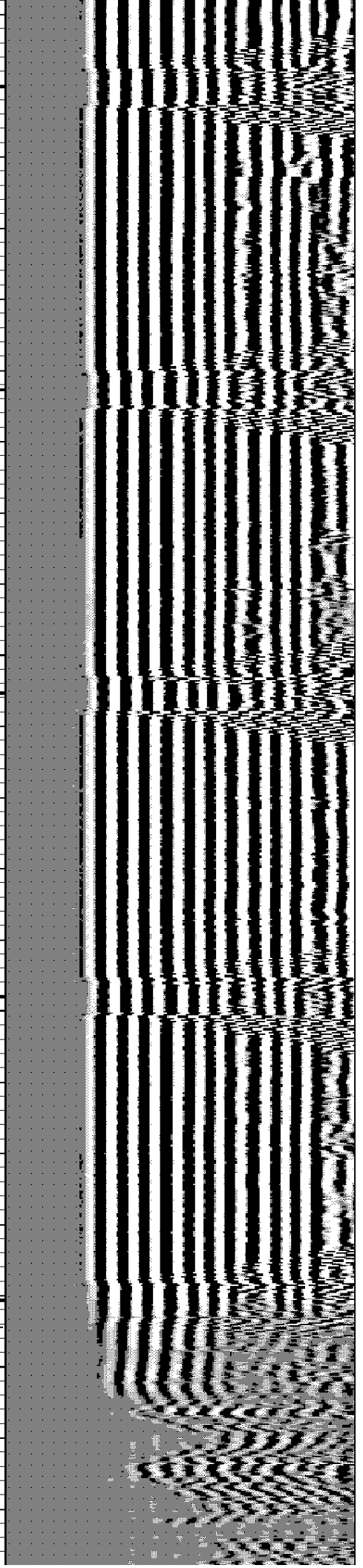
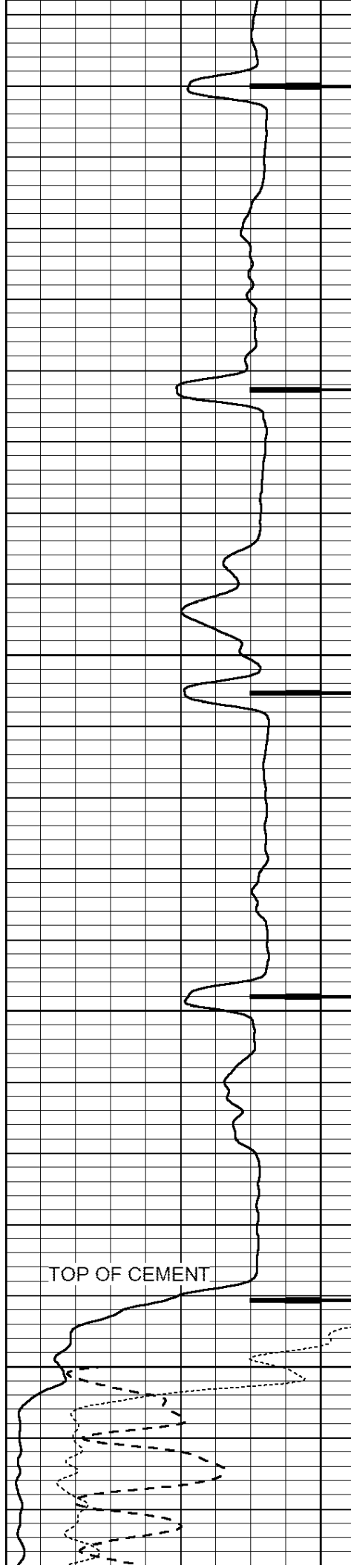
2850

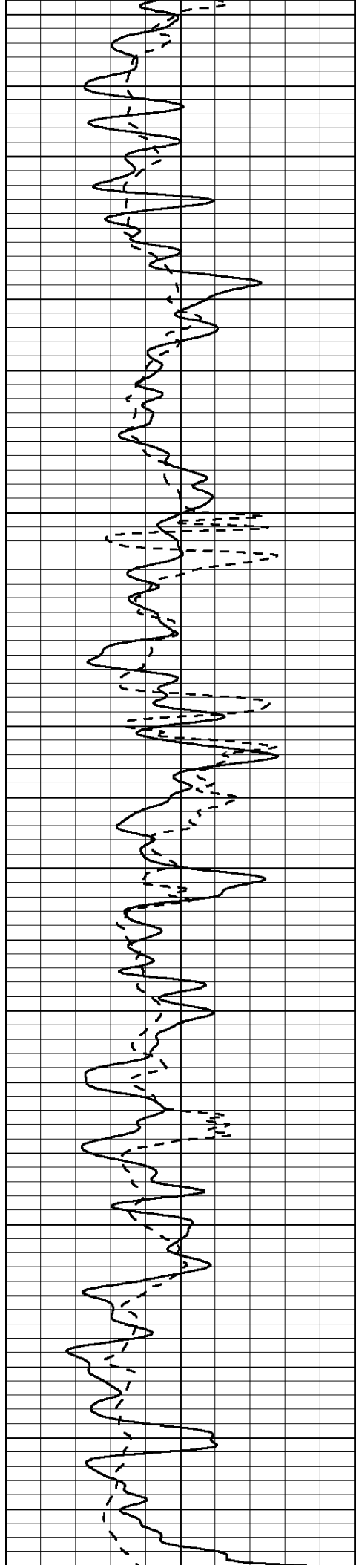
2900

2950

3000

TOP OF CEMENT



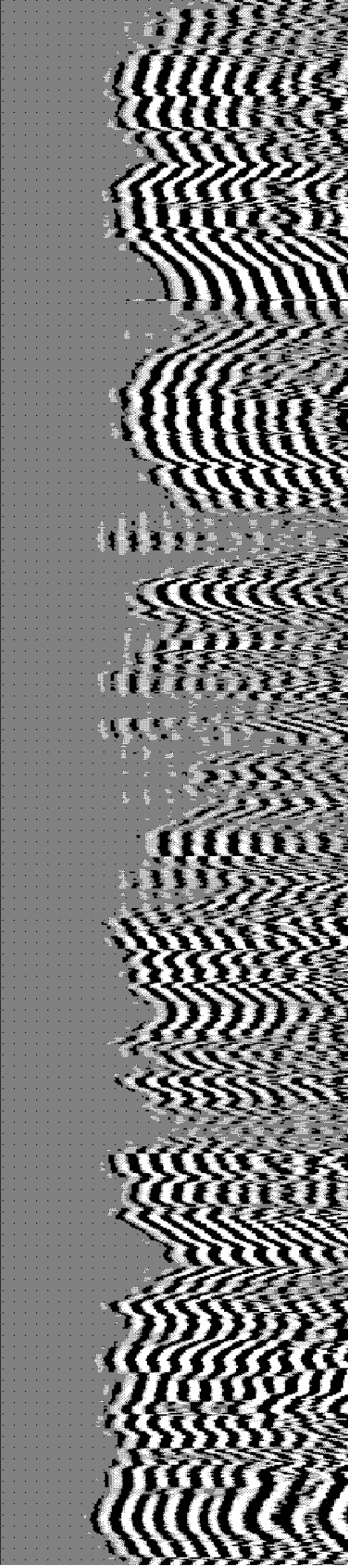
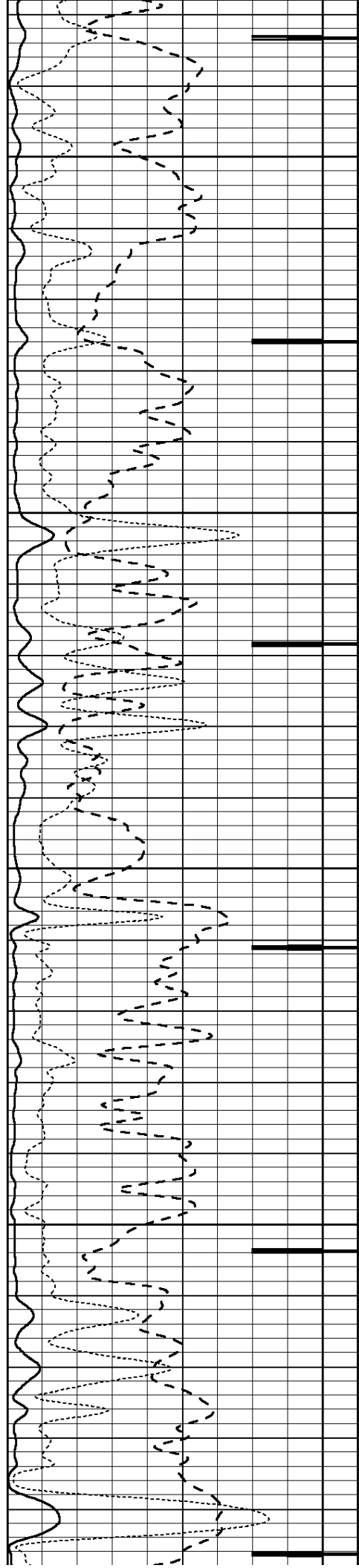


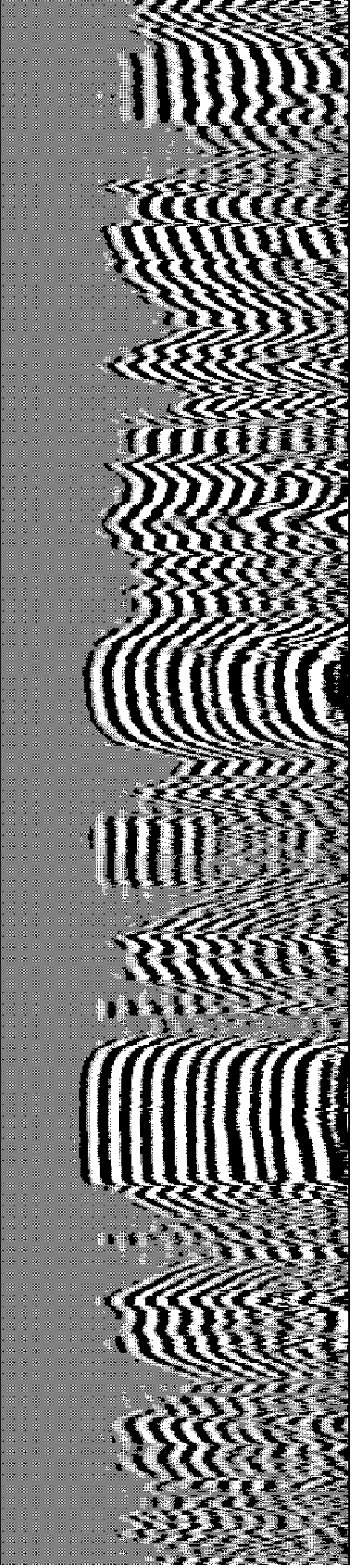
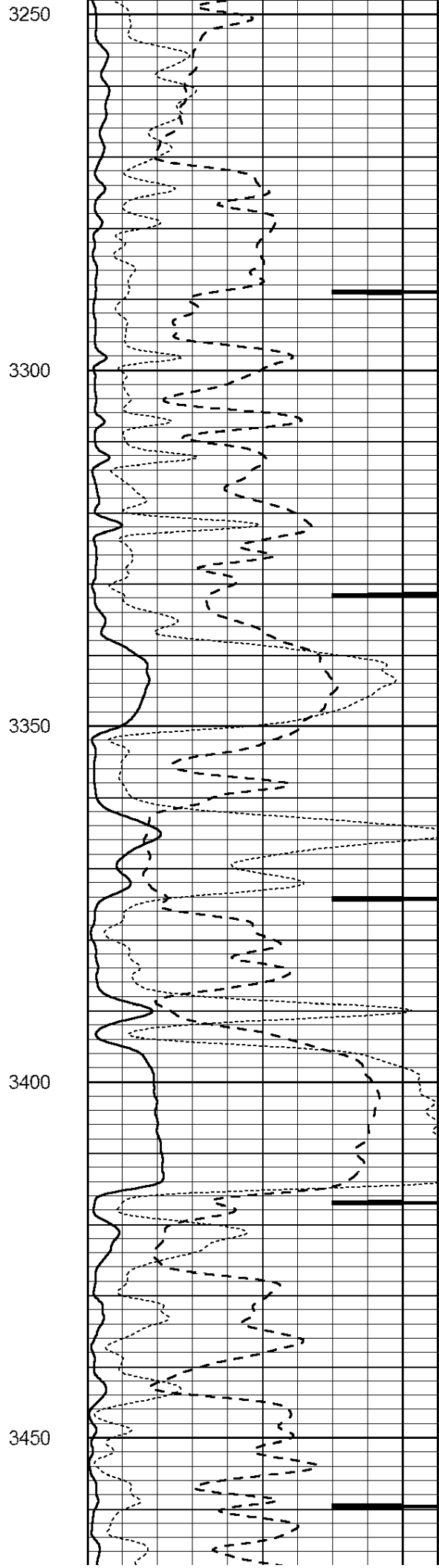
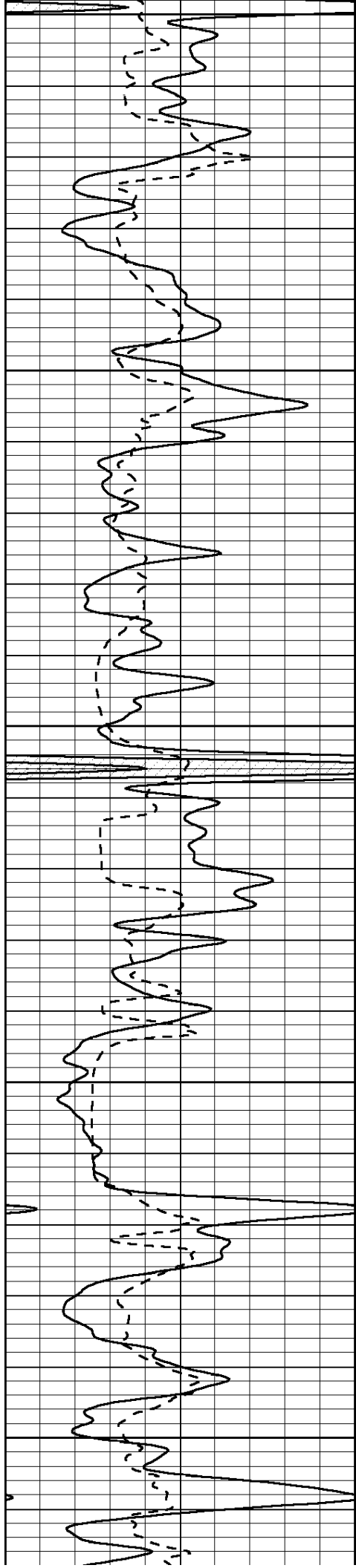
3050

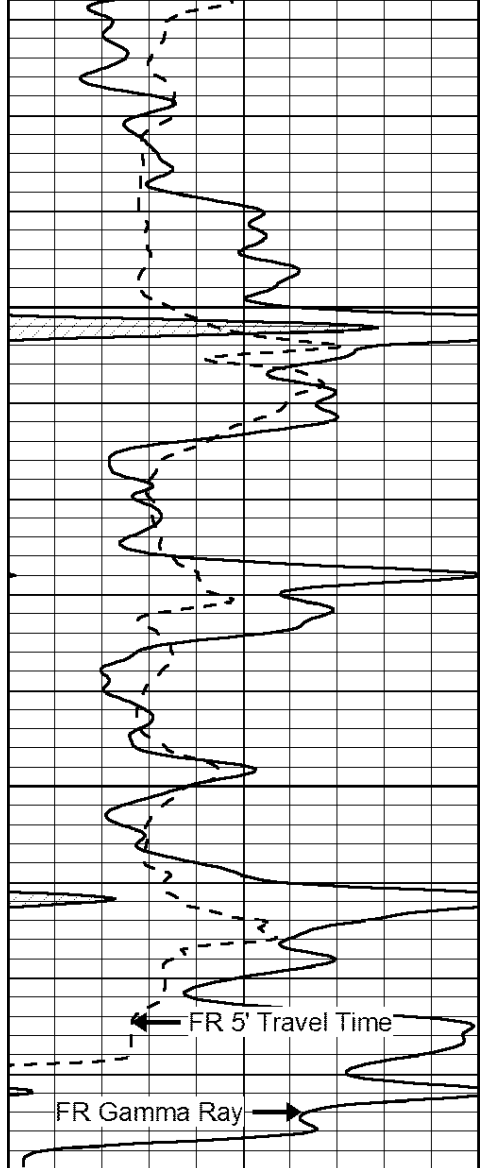
3100

3150

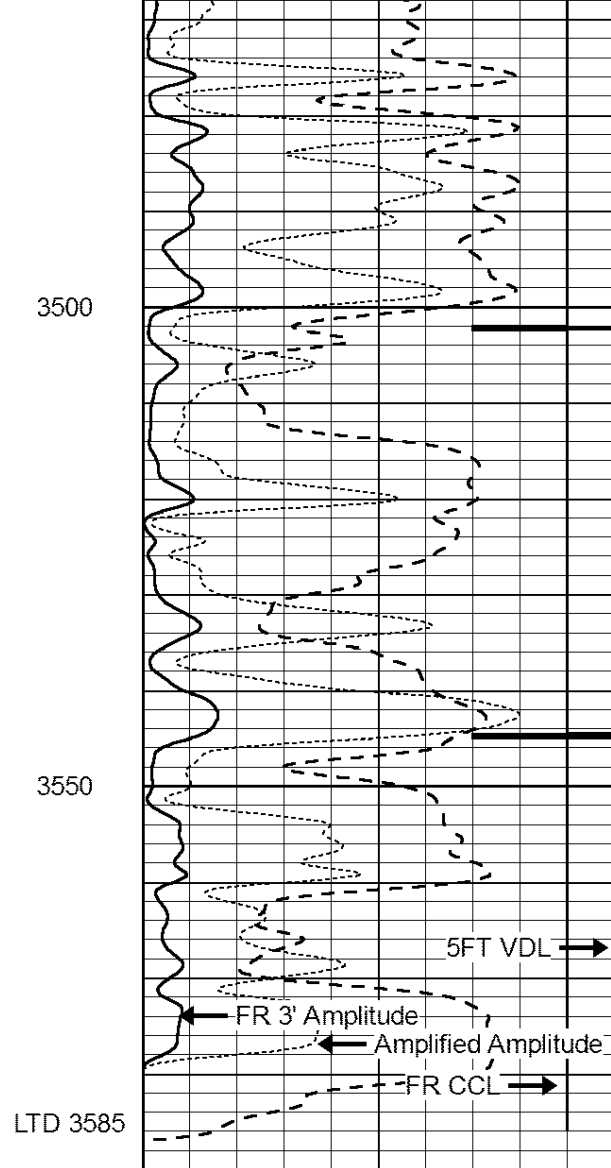
3200





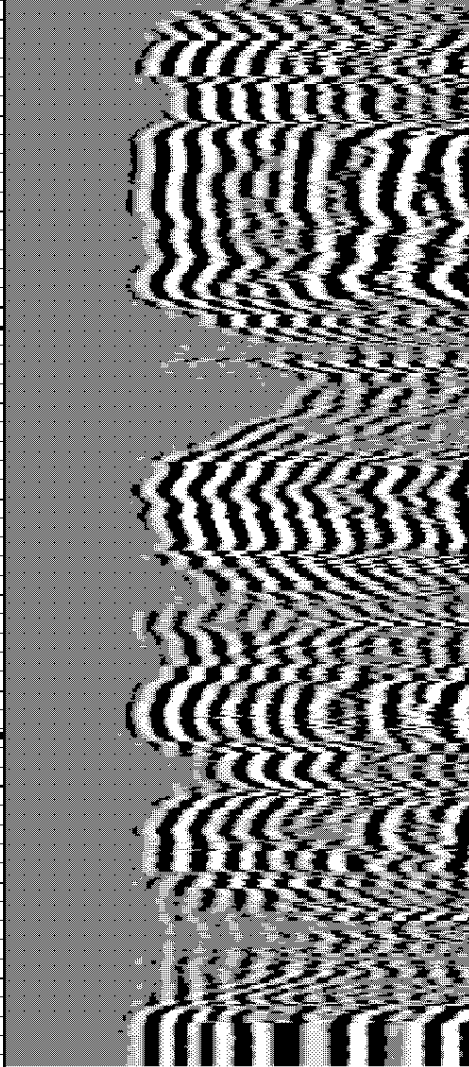


0	Gamma Ray (GAPI)	150
200	5' Travel Time (usec)	1000



LTD 3585

0	3' Amplitude (mV)	100
9	CCL	-1
0	Amplified Amplitude (mV)	20
NEUTRON		



200	5FT VDL	1000
-----	---------	------