



# DUAL INDUCTION LOG

Company VINCENT OIL CORPORATION  
 Well STEELE TRUST #6-28  
 Field UNNAMED  
 County FORD State KANSAS

Location: API #: 15-057-21088-0000  
 260' FSL & 280' FEEL  
 SE - SE - SE - SE  
 SEC 28 TWP 27S RGE 23W  
 Permanent Datum GROUND LEVEL Elevation 2463  
 Log Measured From KELLY BUSHING 12' A.G.L.  
 Drilling Measured From KELLY BUSHING  
 Other Services  
 CD/CNL/PE  
 MEL/SON  
 Elevation  
 K.B. 2475  
 D.F. 2473  
 G.L. 2463

Date	7/5/23		
Run Number	ONE		
Depth Driller	5165		
Depth Logger	5161		
Bottom Logged Interval	5159		
Top Log Interval	00		
Casing Driller	8 5/8" @ 689		
Casing Logger	683		
Bit Size	7 7/8		
Type Fluid in Hole	CHEMICAL MUD	CHLORIDES 10,800 PPM	
Density / Viscosity	9.2/47		
pH / Fluid Loss	9.5/11.2		
Source of Sample	FLOWLINE		
Rm @ Meas. Temp	.350 @ 80F		
Rmt @ Meas. Temp	.263 @ 80F		
Rmc @ Meas. Temp	.420 @ 80F		
Source of Rmf / Rmc	MEASUREMENT		
Rm @ BHT	.222 @ 126F		
Time Circulation Stopped	2 HOURS		
Time Logger on Bottom	9:30 P.M.		
Maximum Recorded Temperature	126F		
Equipment Number	8916		
Location	HAYS, KANSAS		
Recorded By	COLE ROBBEN		
Witnessed By	TOM DUDGEON		

<<< Fold Here >>>

All interpretations are opinions based on inferences from electrical or other measurements and we cannot and do not guarantee the accuracy or correctness of any interpretation, and we shall not, except in the case of gross or willful negligence on our part, be liable or responsible for any loss, costs, damages, or expenses incurred or sustained by anyone resulting from any interpretation made by any of our officers, agents or employees. These interpretations are also subject to our general terms and conditions set out in our current Price Schedule.

### Comments

THANK YOU FOR USING ELI WIRELINE SERVICES, HAYS, KS. ( 785 ) 628-6395

### DIRECTIONS:

FROM FORD KANSAS GO NORTH ONE MILE TO SADDLE ROAD (FORD-ENSIGN), FOUR MILES WEST TO ROAD 121, ONE MILE NORTH, WEST INTO

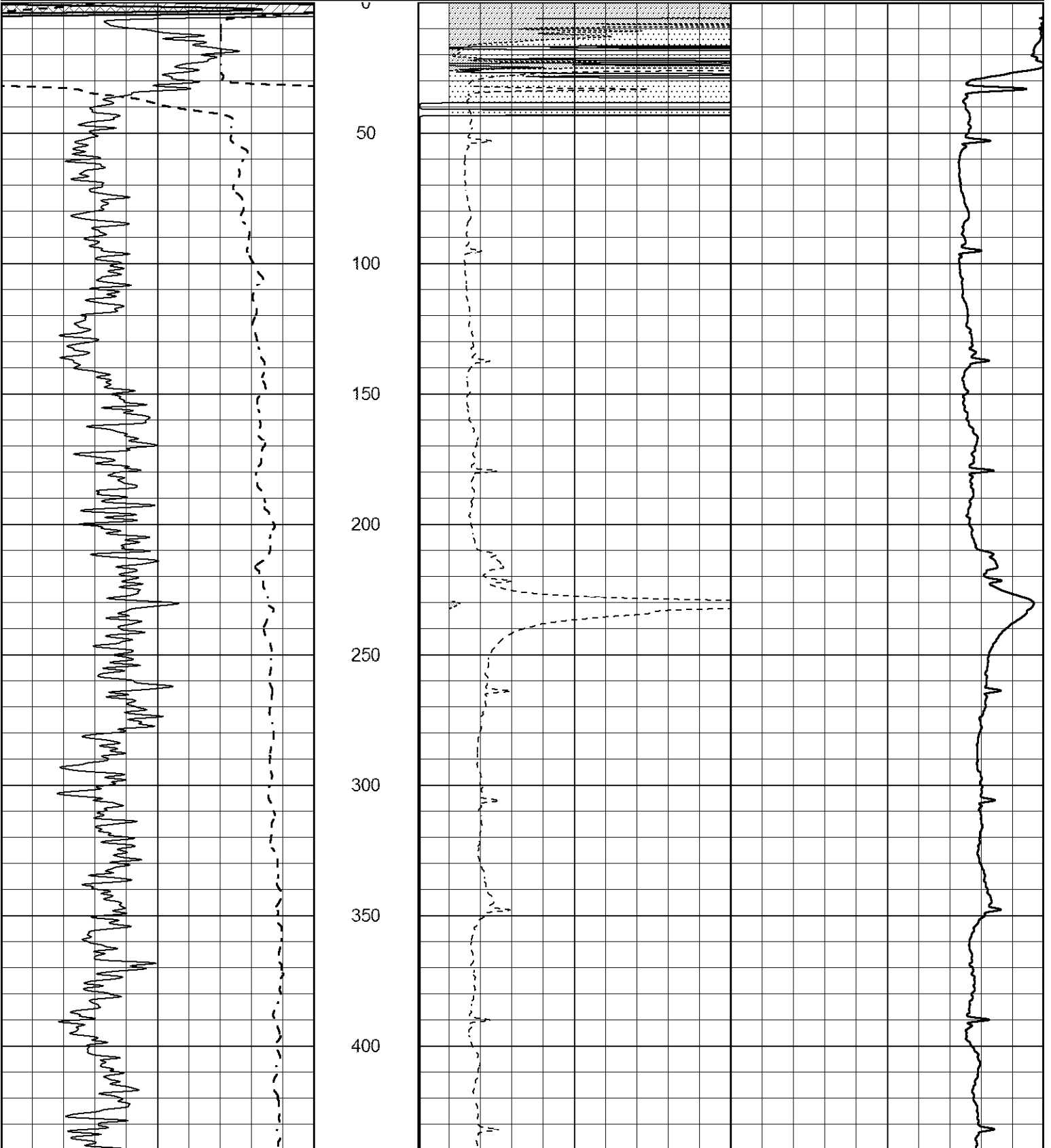


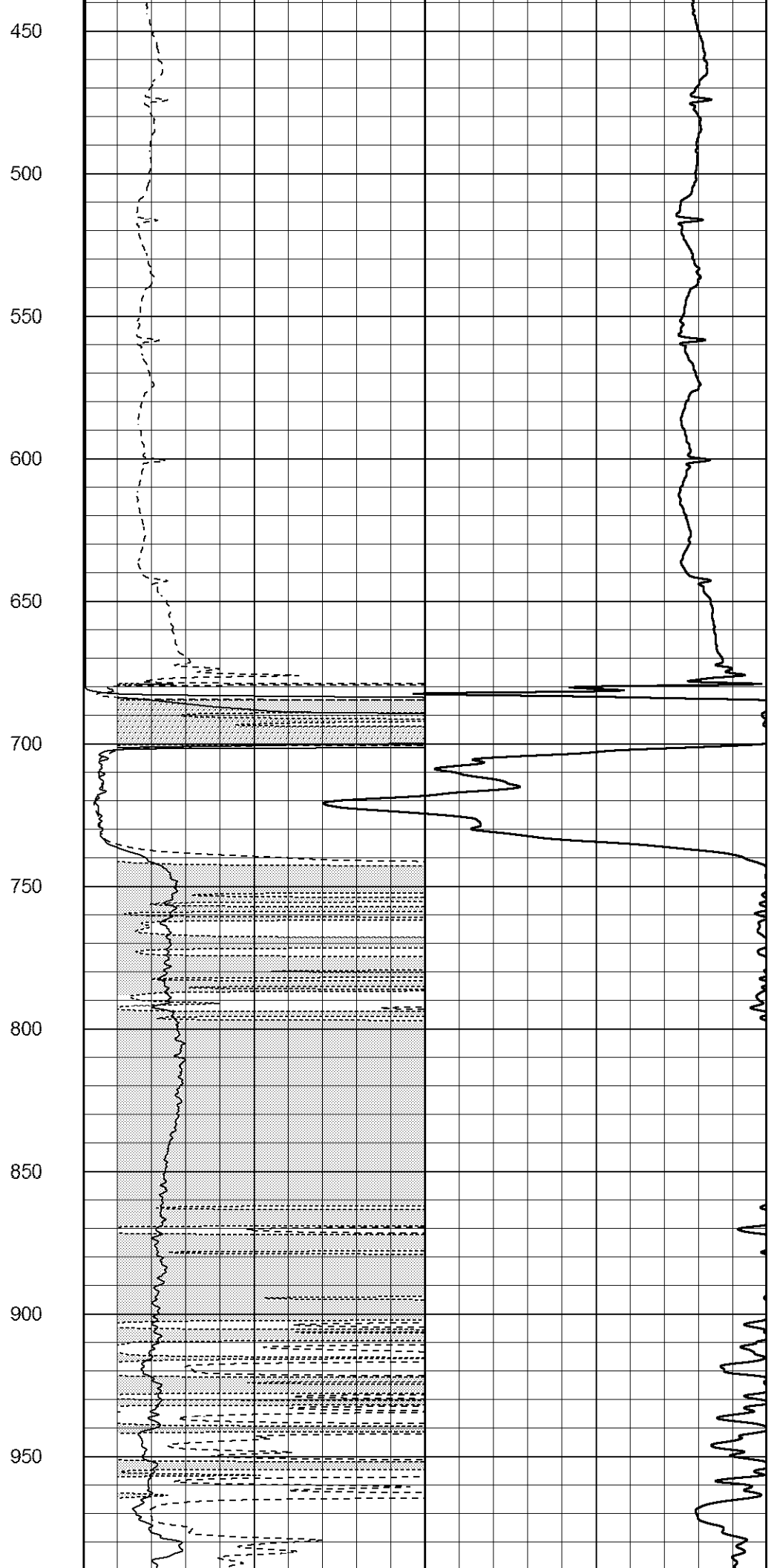
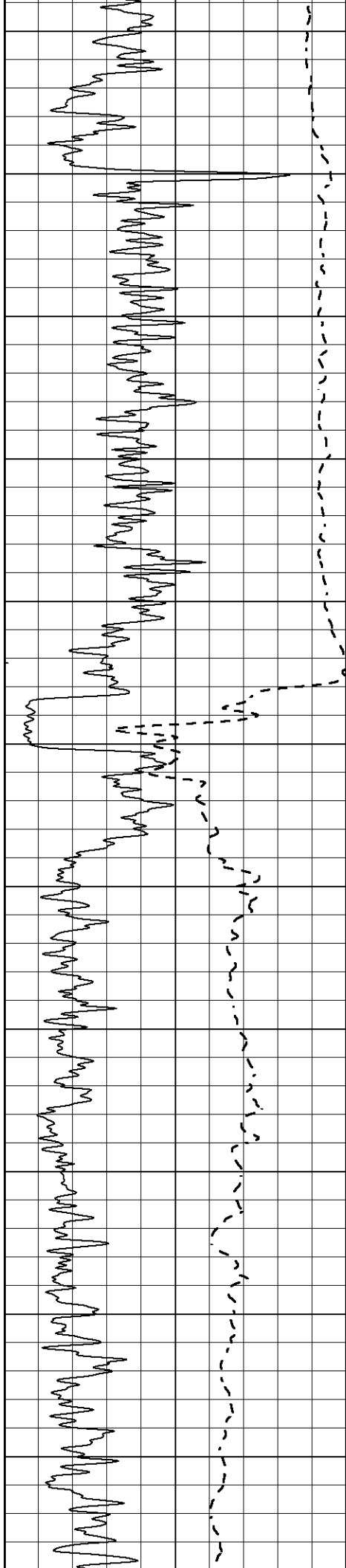
# MAIN SECTION

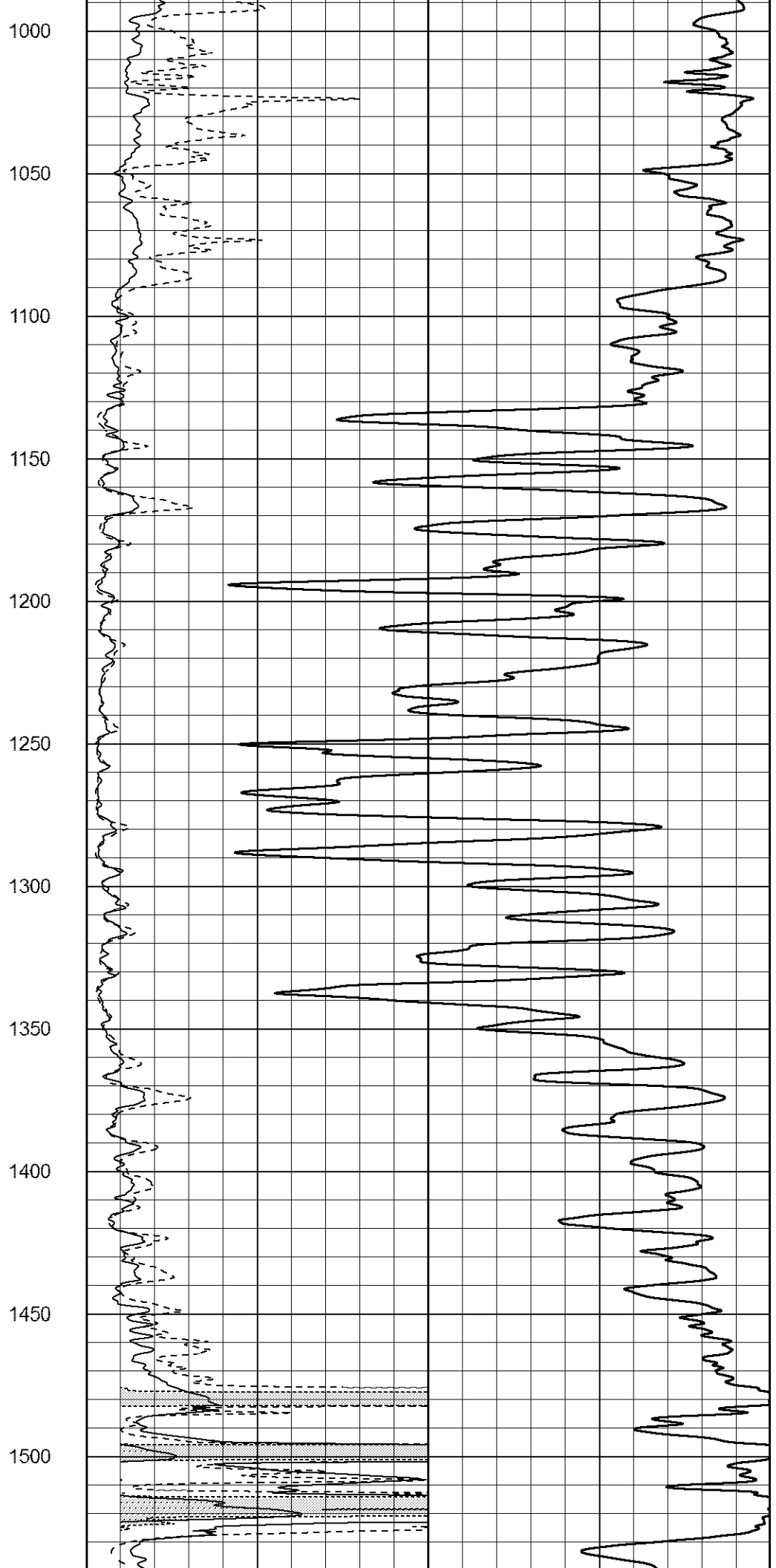
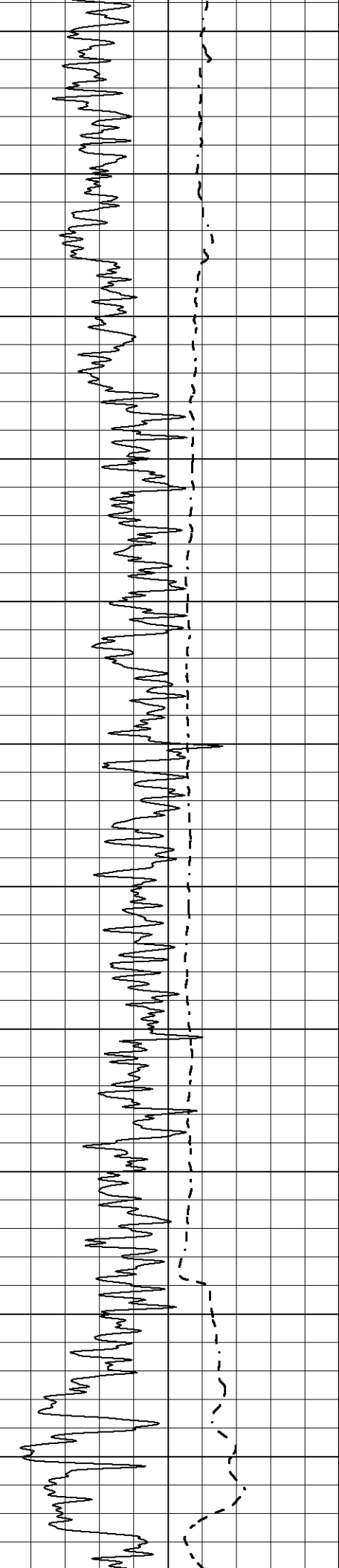
Database File 7701pe.db  
 Dataset Pathname pass3C1  
 Presentation Format \_dil2  
 Dataset Creation Thu Jul 06 15:27:54 2023  
 Charted by Depth in Feet scaled 1:600

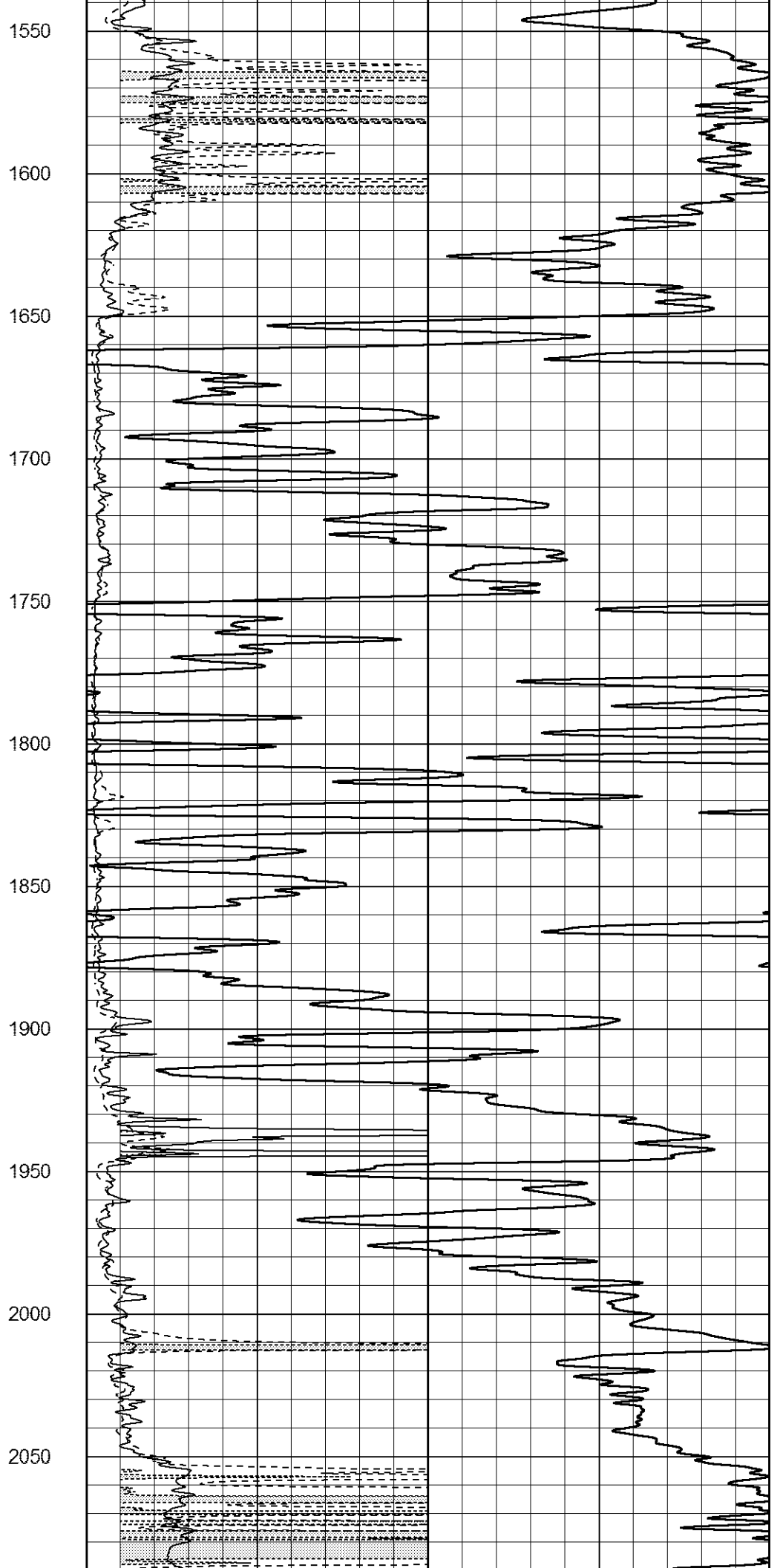
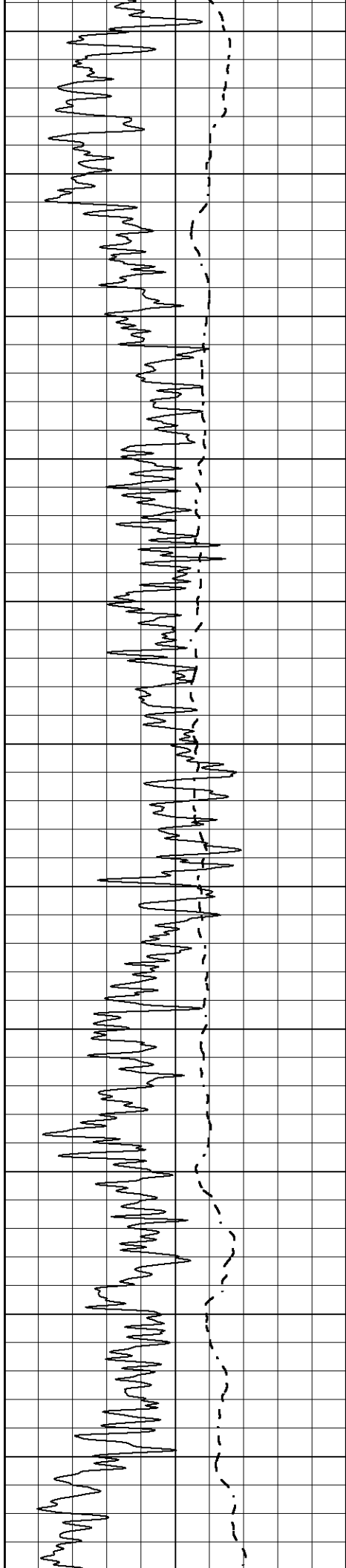
0 Gamma Ray (GAPI) 150  
 -100 SP (mV) 100

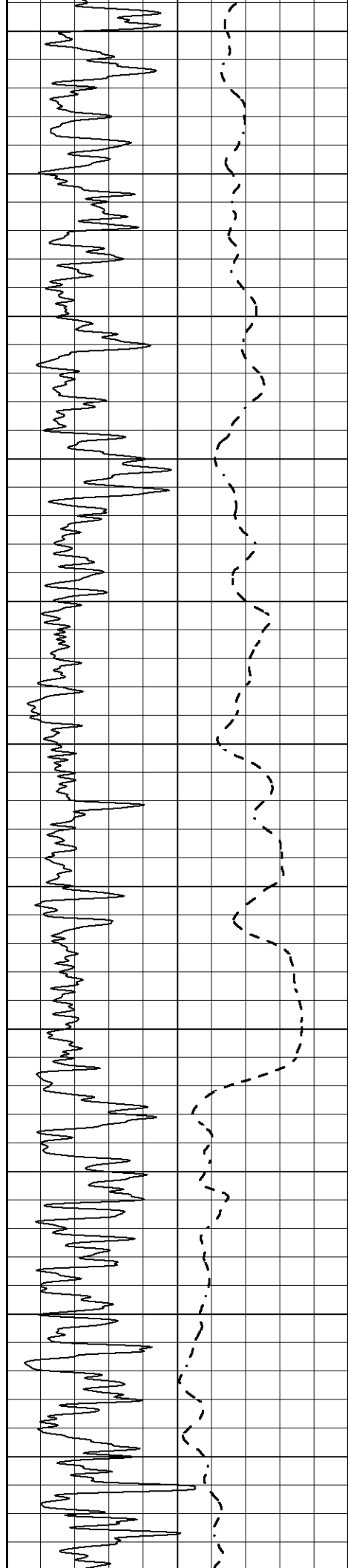
1000 CILD (mmho/m) 0  
 0 RLL3 (Ohm-m) 50  
 0 Deep Induction (Ohm-m) 50  
 50 RILD X10 (Ohm-m) 500  
 50 RLL3 X10 (Ohm-m) 500



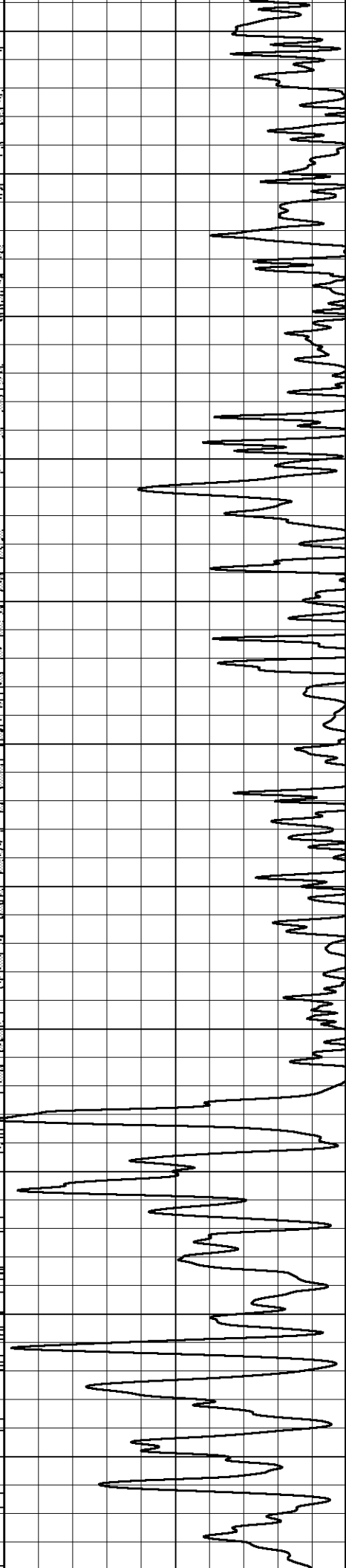
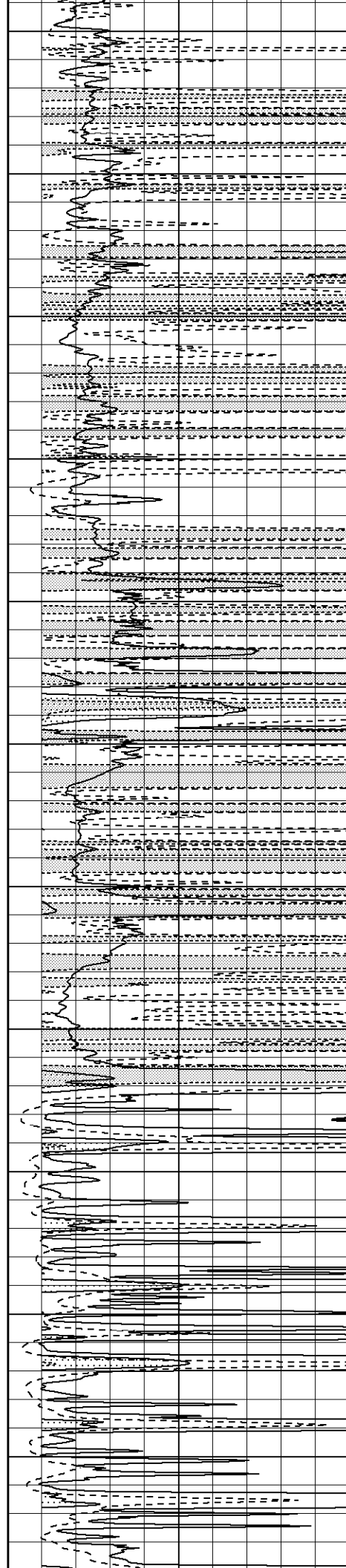


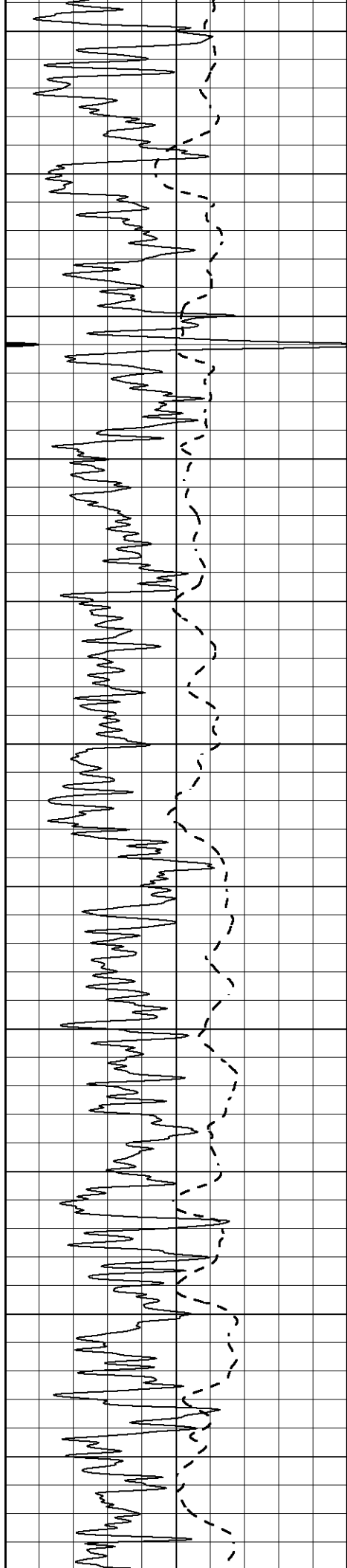




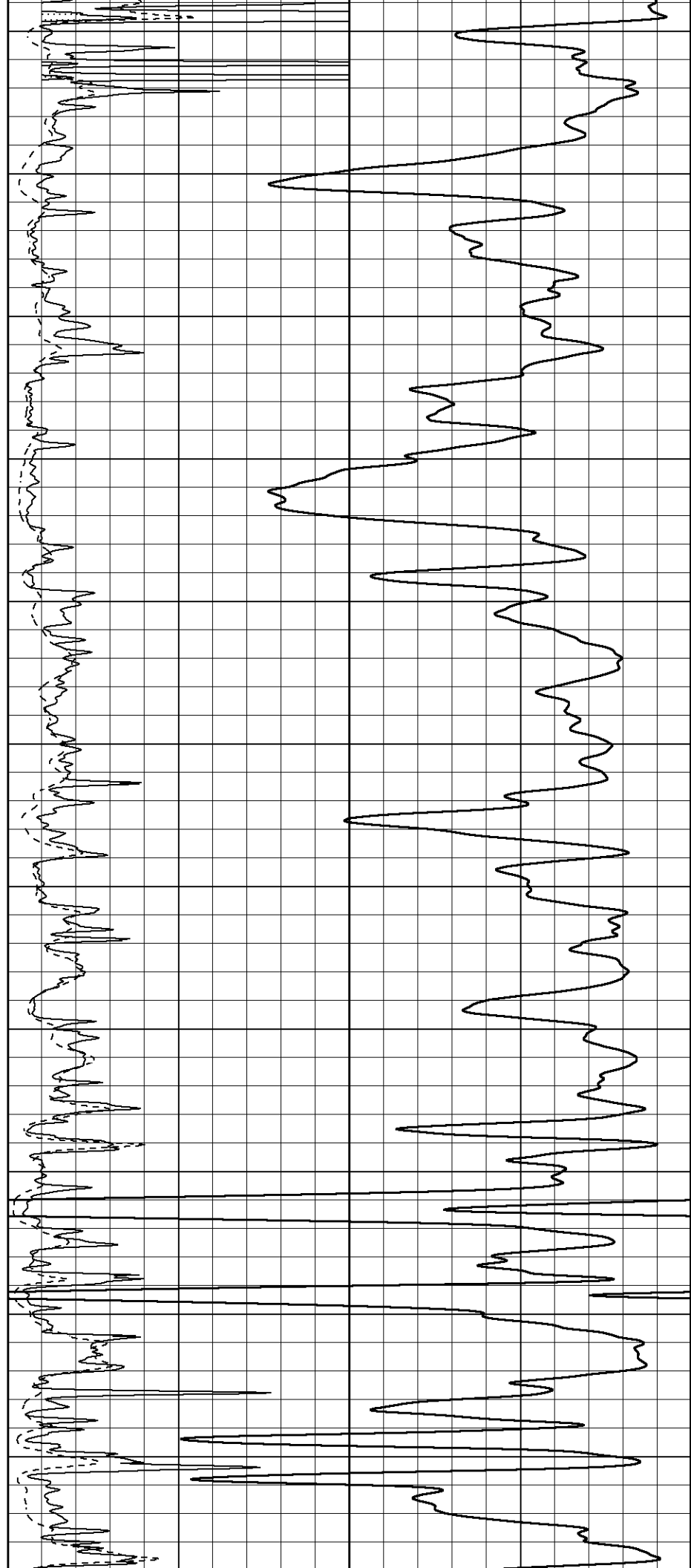


2100  
2150  
2200  
2250  
2300  
2350  
2400  
2450  
2500  
2550  
2600

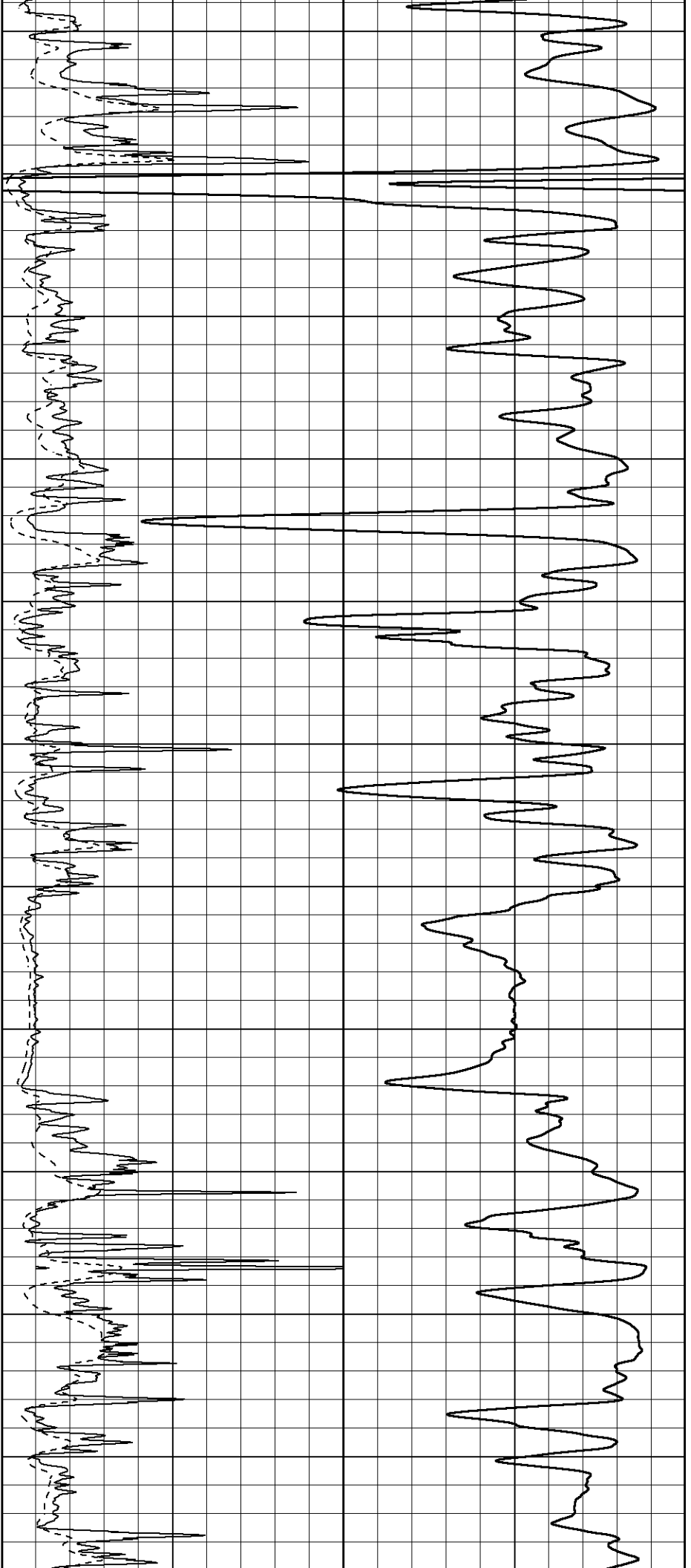
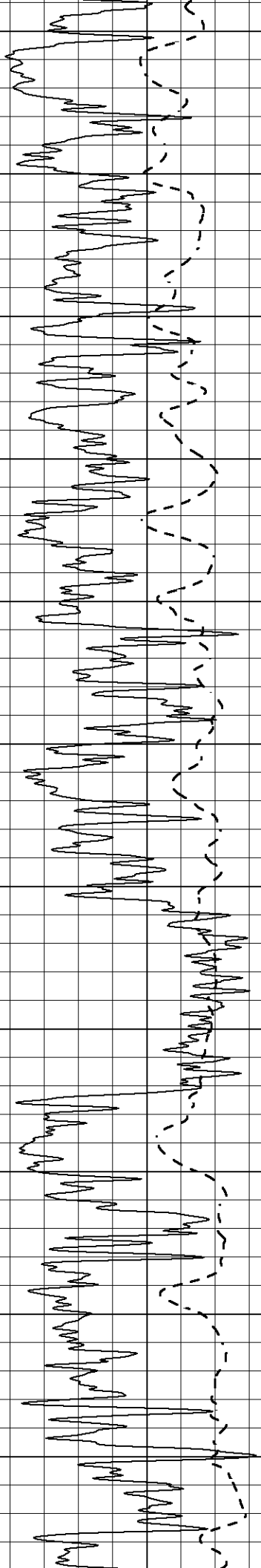


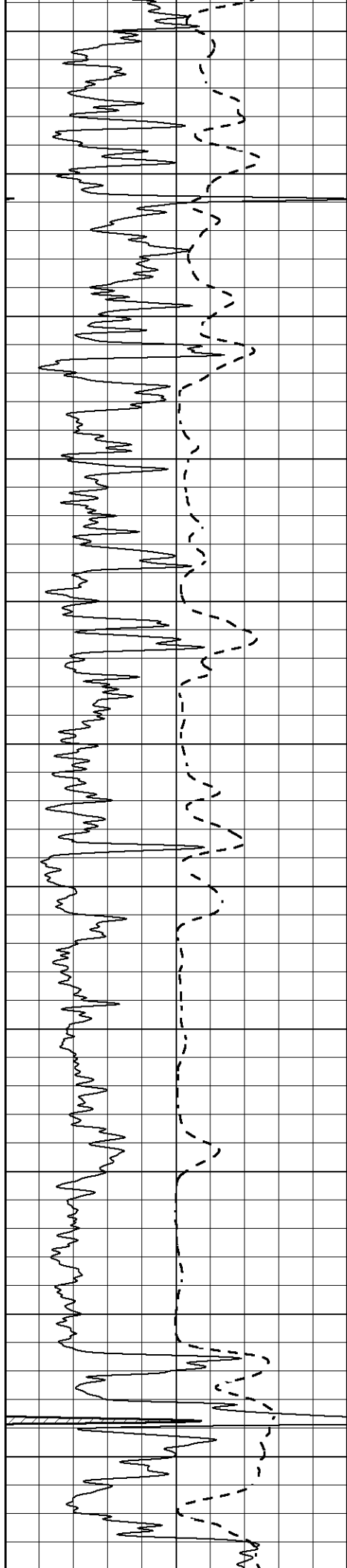


2650  
2700  
2750  
2800  
2850  
2900  
2950  
3000  
3050  
3100  
3150



3200  
3250  
3300  
3350  
3400  
3450  
3500  
3550  
3600  
3650  
3700





3750

3800

3850

3900

3950

4000

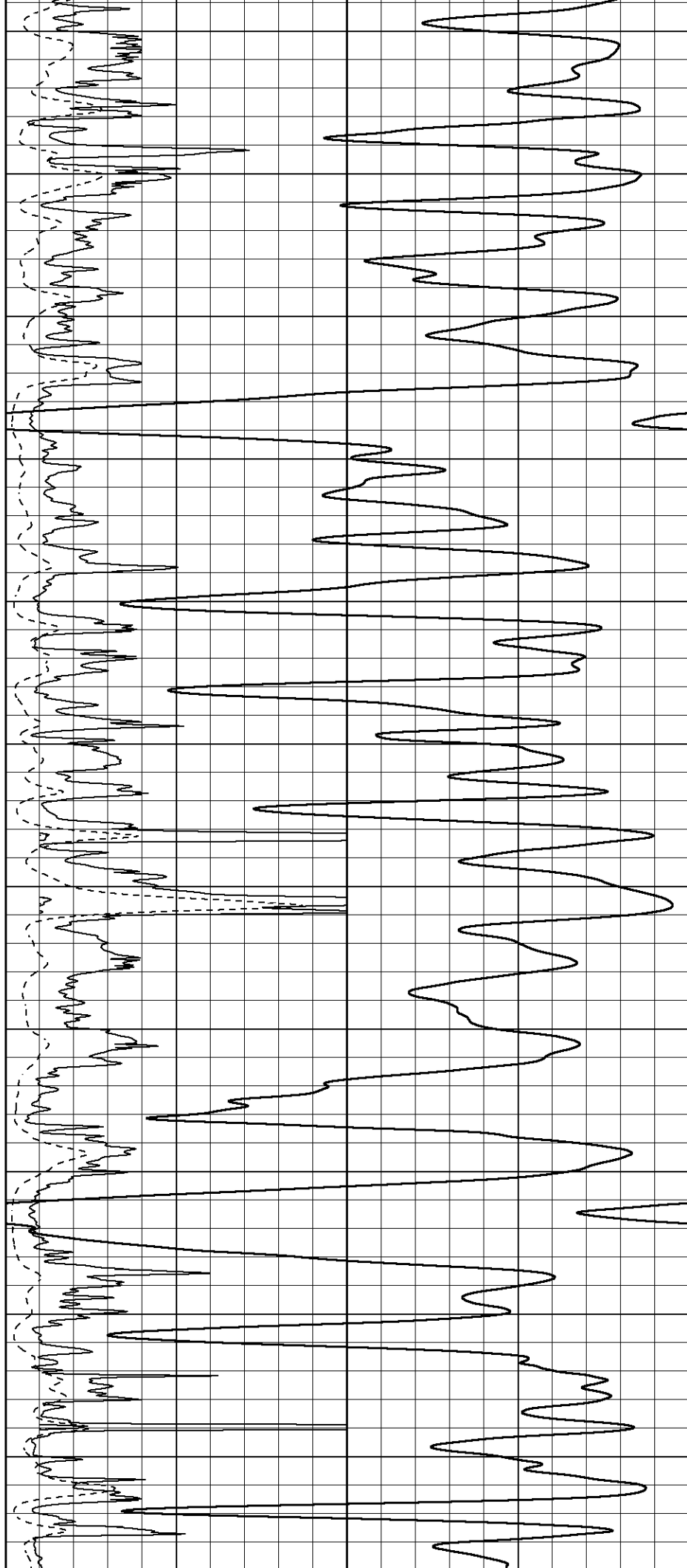
4050

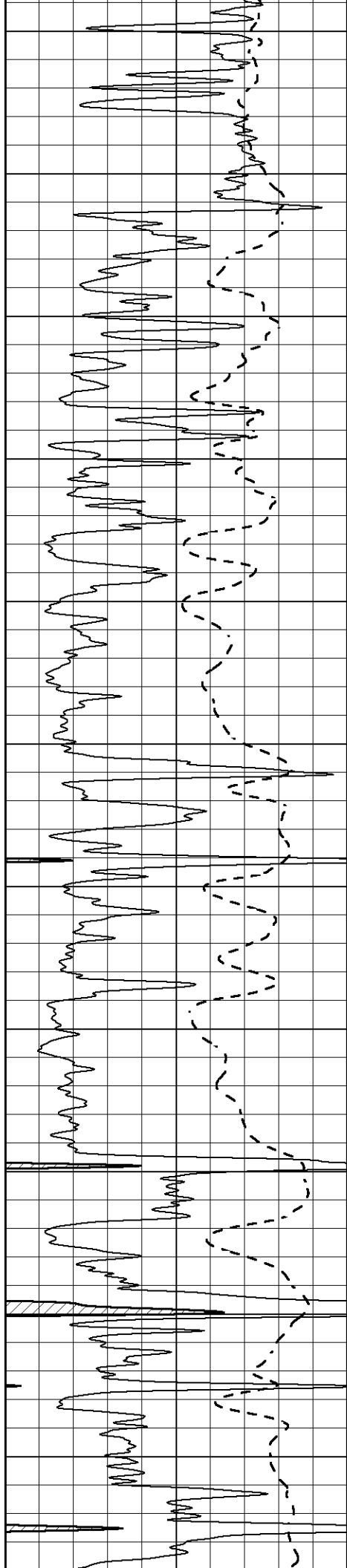
4100

4150

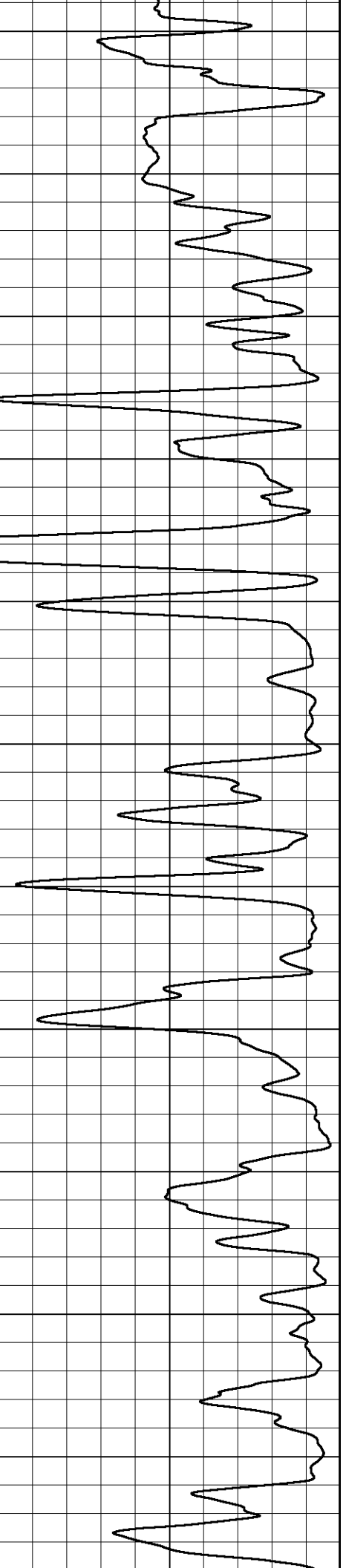
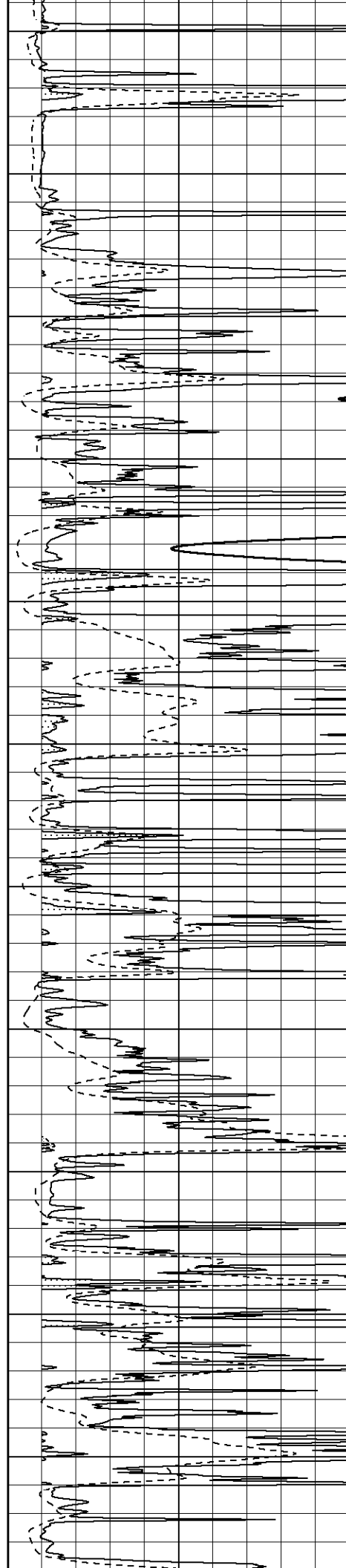
4200

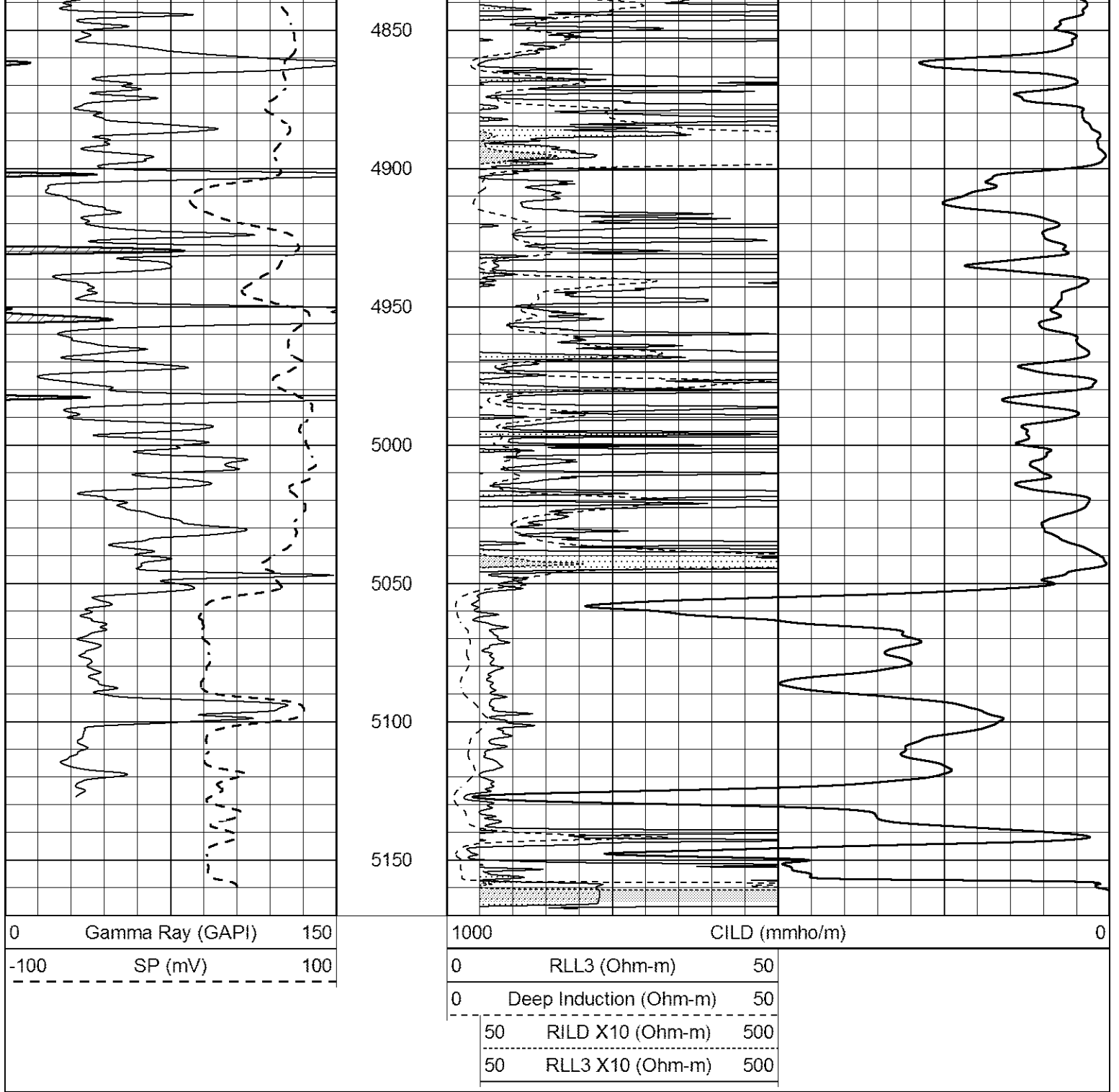
4250





4300  
4350  
4400  
4450  
4500  
4550  
4600  
4650  
4700  
4750  
4800

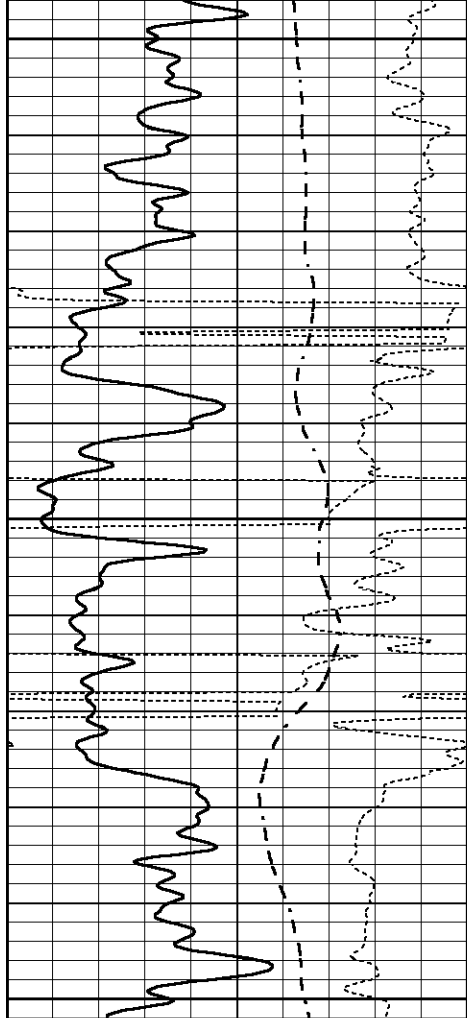




# ANHYDRITE

Database File 7701pe.db  
 Dataset Pathname pass3A  
 Presentation Format \_dil  
 Dataset Creation Wed Jul 05 23:59:12 2023  
 Charted by Depth in Feet scaled 1:240

0	GAMMA RAY (GAPI)	150	0.2	SHALLOW GUARD (Ohm-m)	2000
-100	SP (mV)	100	0.2	MEDIUM INDUCTION (Ohm-m)	2000
-250	Rxo/Rt	50	0.2	DEEP INDUCTION (Ohm-m)	2000

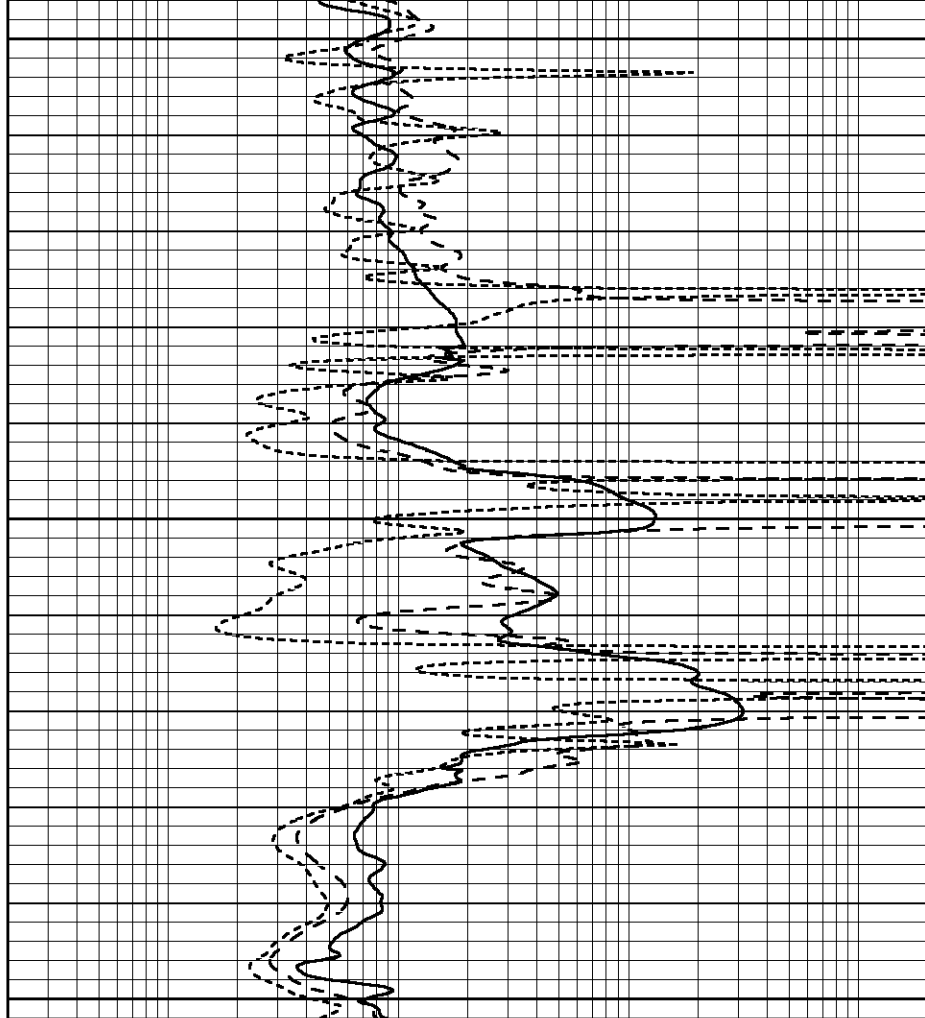


1450

1500

1550

0	GAMMA RAY (GAPI)	150
-100	SP (mV)	100
-250	Rxo/Rt	50



0.2	SHALLOW GUARD (Ohm-m)	2000
0.2	MEDIUM INDUCTION (Ohm-m)	2000
0.2	DEEP INDUCTION (Ohm-m)	2000

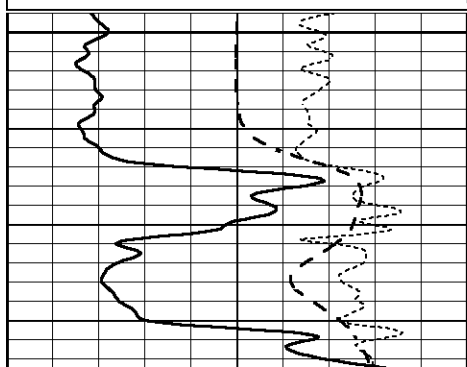


# MAIN SECTION

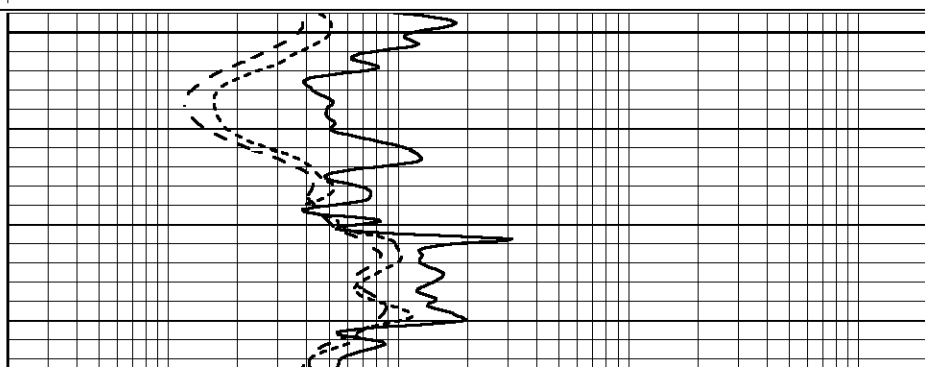
Database File 7701pe.db  
 Dataset Pathname pass3C1  
 Presentation Format \_dil  
 Dataset Creation Thu Jul 06 15:27:54 2023  
 Charted by Depth in Feet scaled 1:240

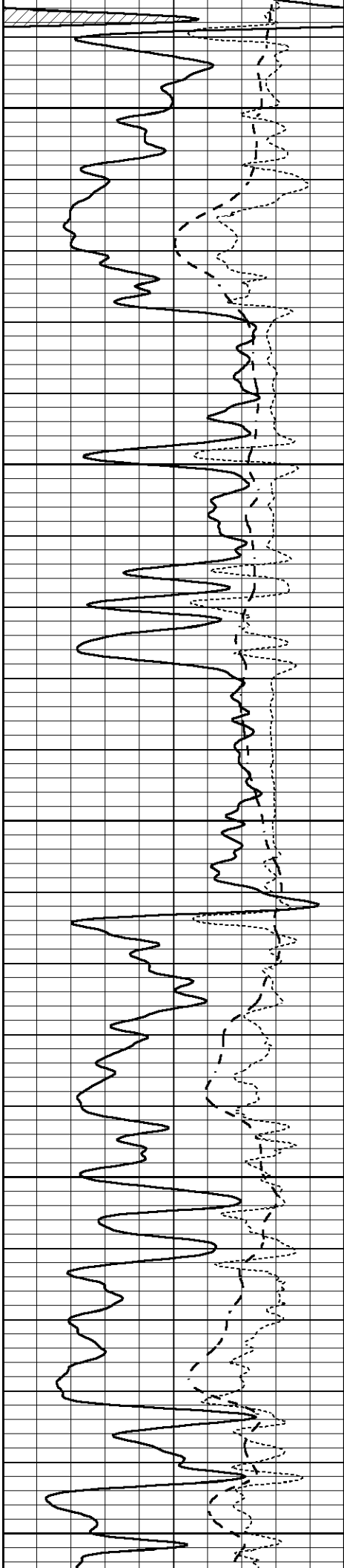
0	GAMMA RAY (GAPI)	150
-100	SP (mV)	100
-250	Rxo/Rt	50

0.2	SHALLOW GUARD (Ohm-m)	2000
0.2	MEDIUM INDUCTION (Ohm-m)	2000
0.2	DEEP INDUCTION (Ohm-m)	2000



4200





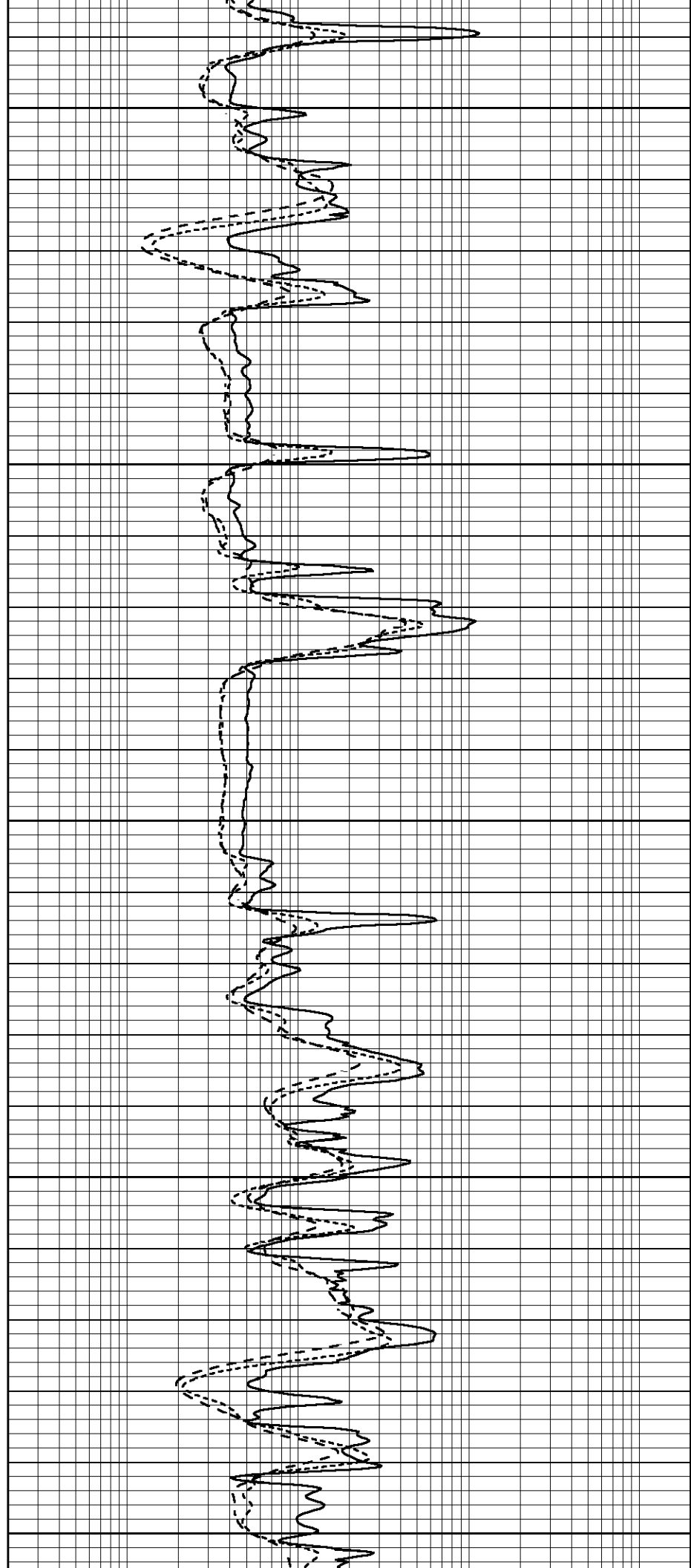
4250

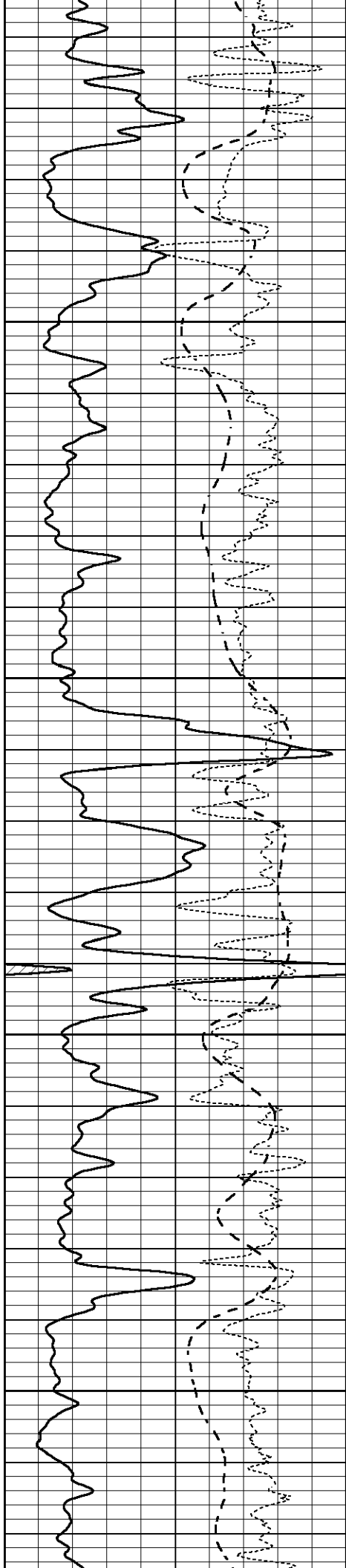
4300

4350

4400

4450



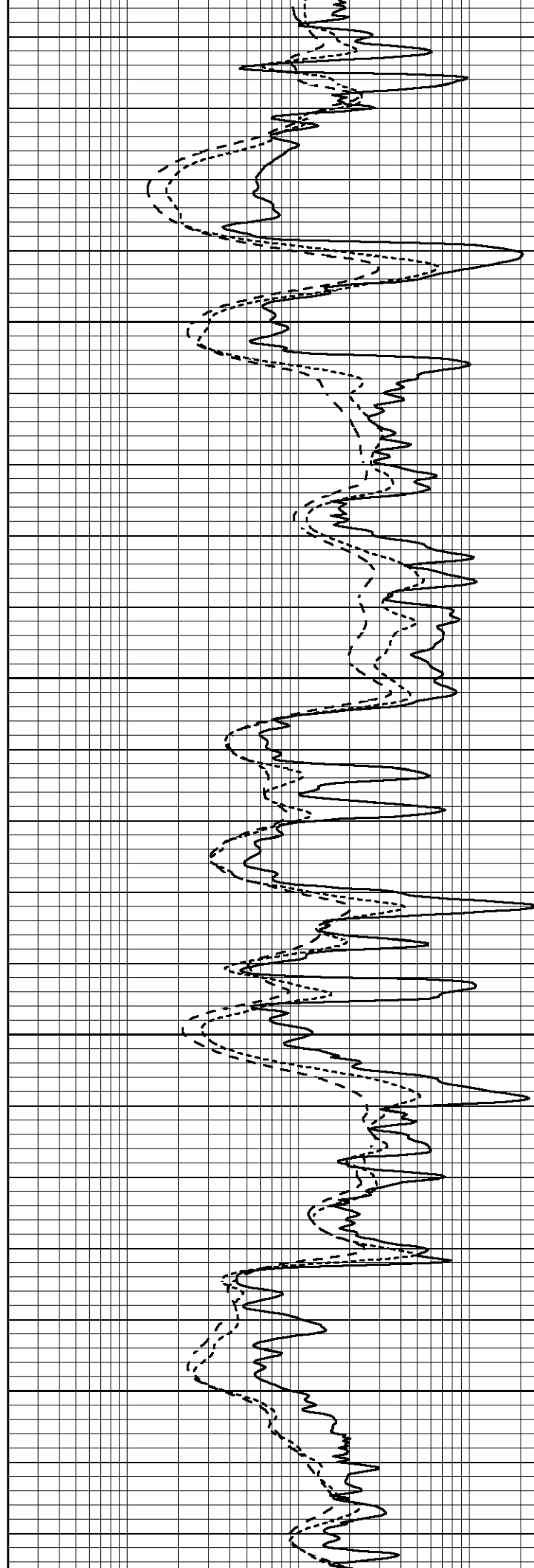


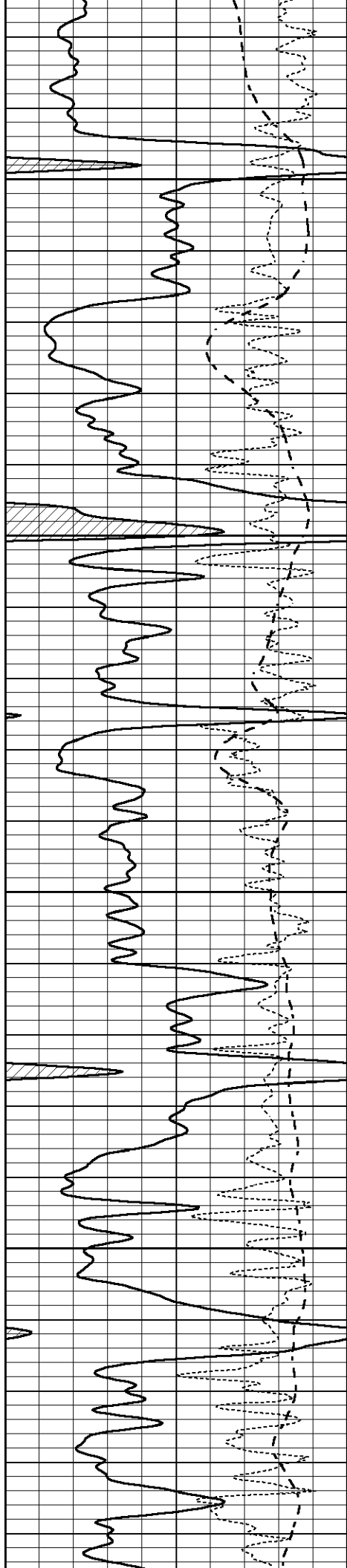
4500

4550

4600

4650



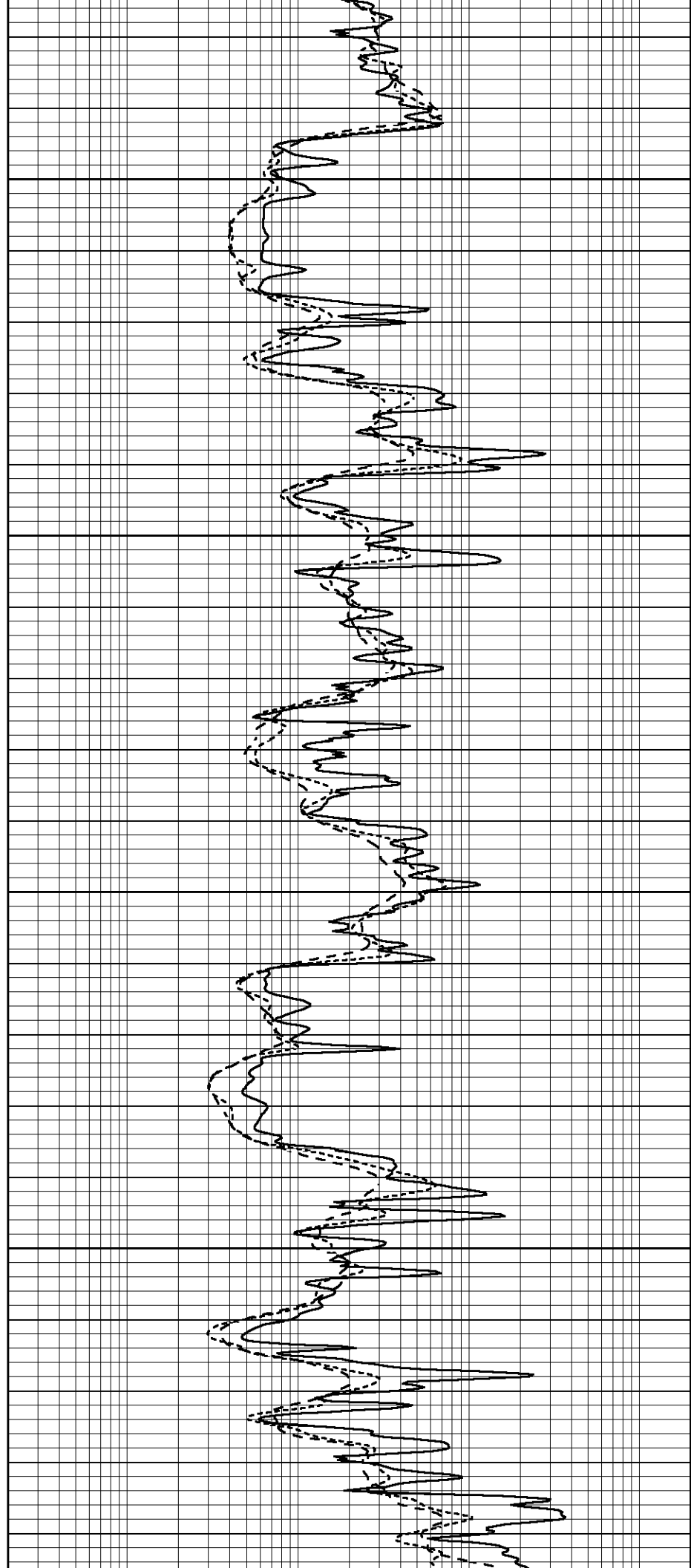


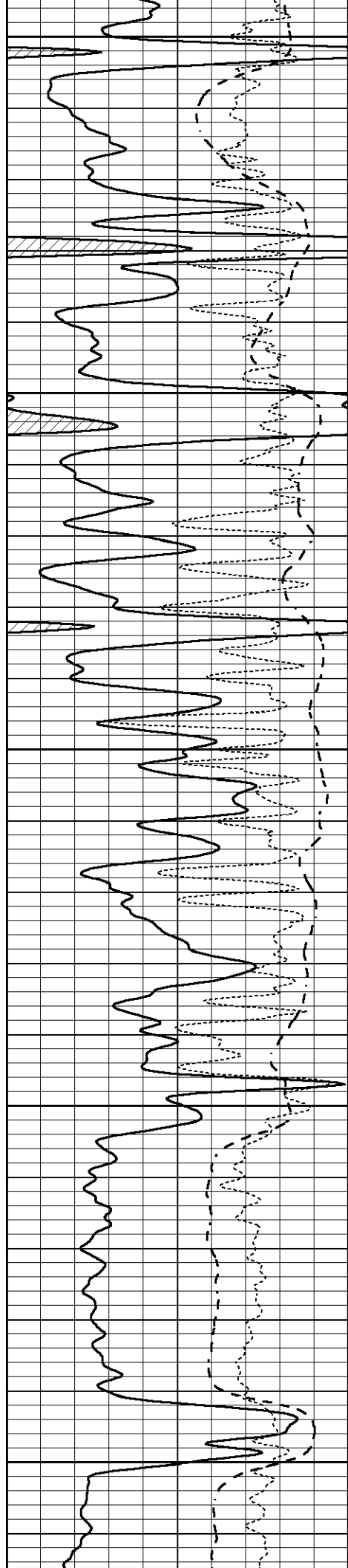
4700

4750

4800

4850





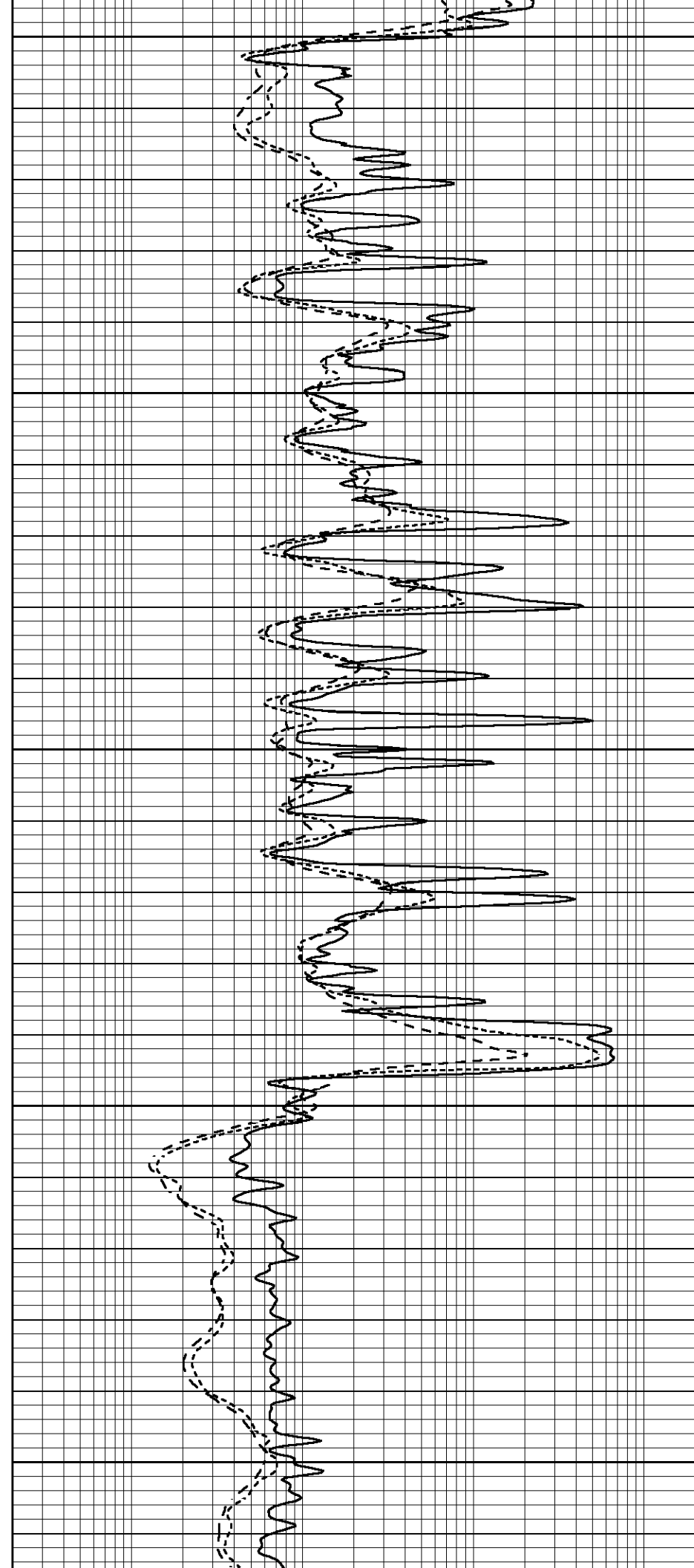
4900

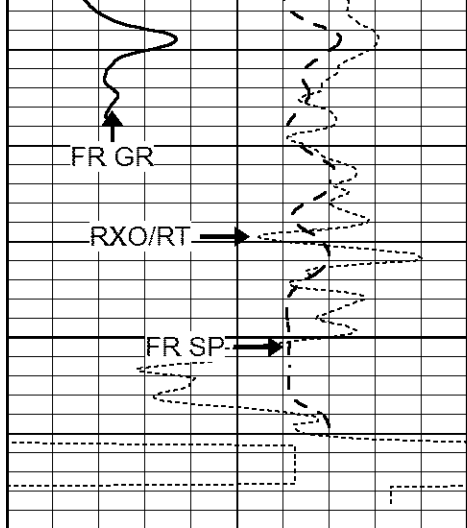
4950

5000

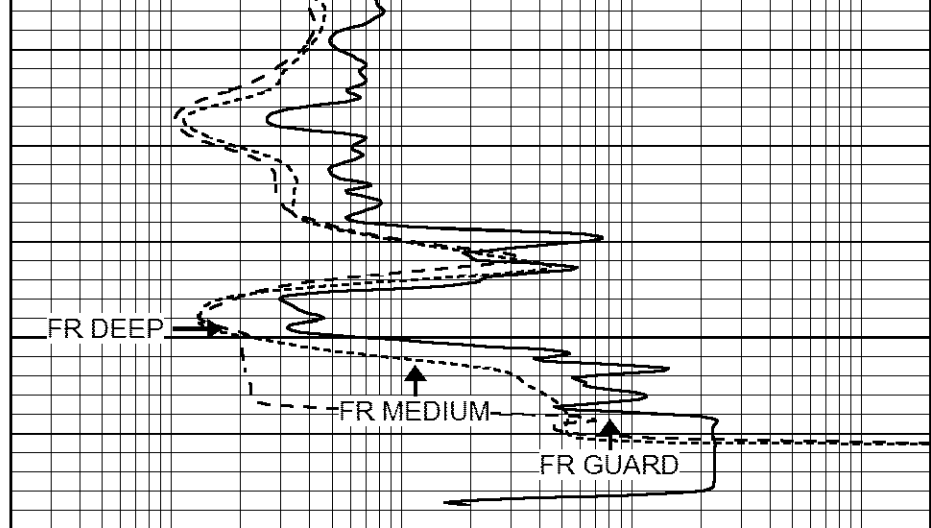
5050

5100



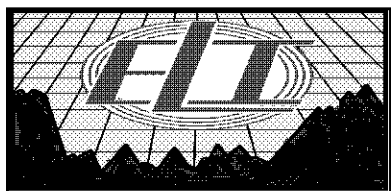


5150  
LTD 5161



0	GAMMA RAY (GAPI)	150
-100	SP (mV)	100
-250	Rxo/Rt	50

0.2	SHALLOW GUARD (Ohm-m)	2000
0.2	MEDIUM INDUCTION (Ohm-m)	2000
0.2	DEEP INDUCTION (Ohm-m)	2000

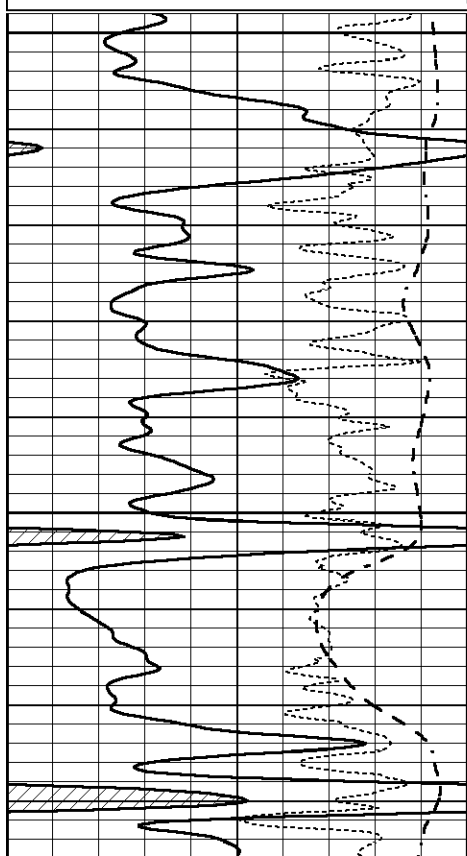


# REPEAT SECTION

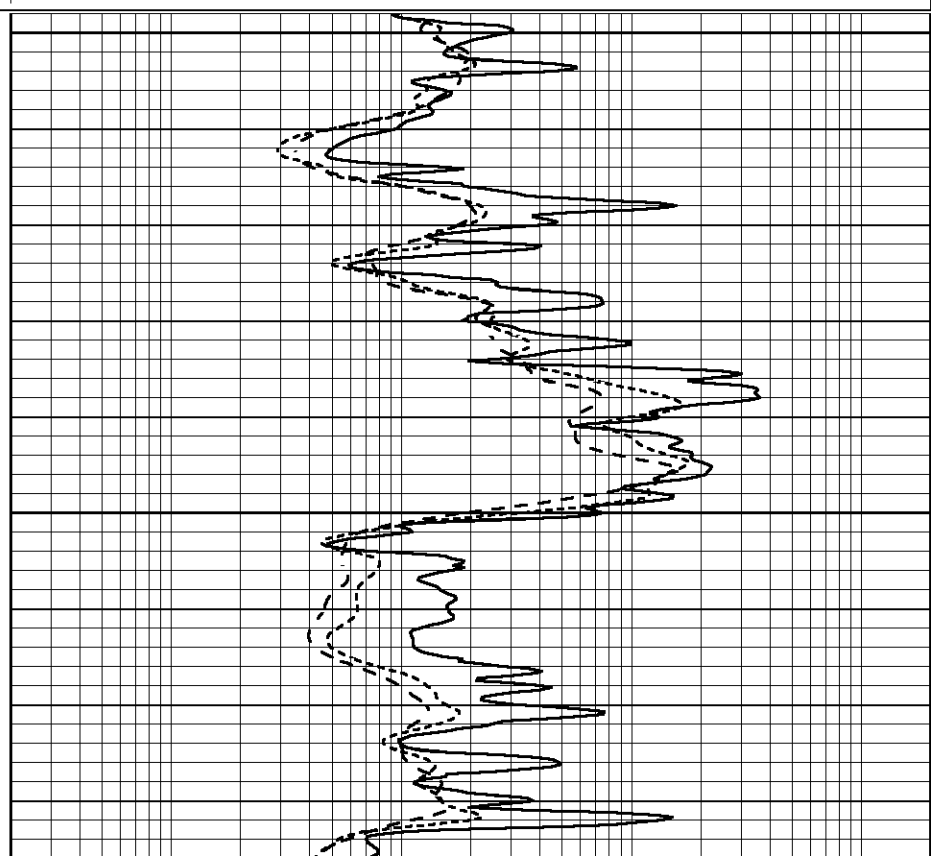
Database File 7701pe.db  
 Dataset Pathname pass2.5  
 Presentation Format \_dil  
 Dataset Creation Wed Jul 05 22:29:42 2023  
 Charted by Depth in Feet scaled 1:240

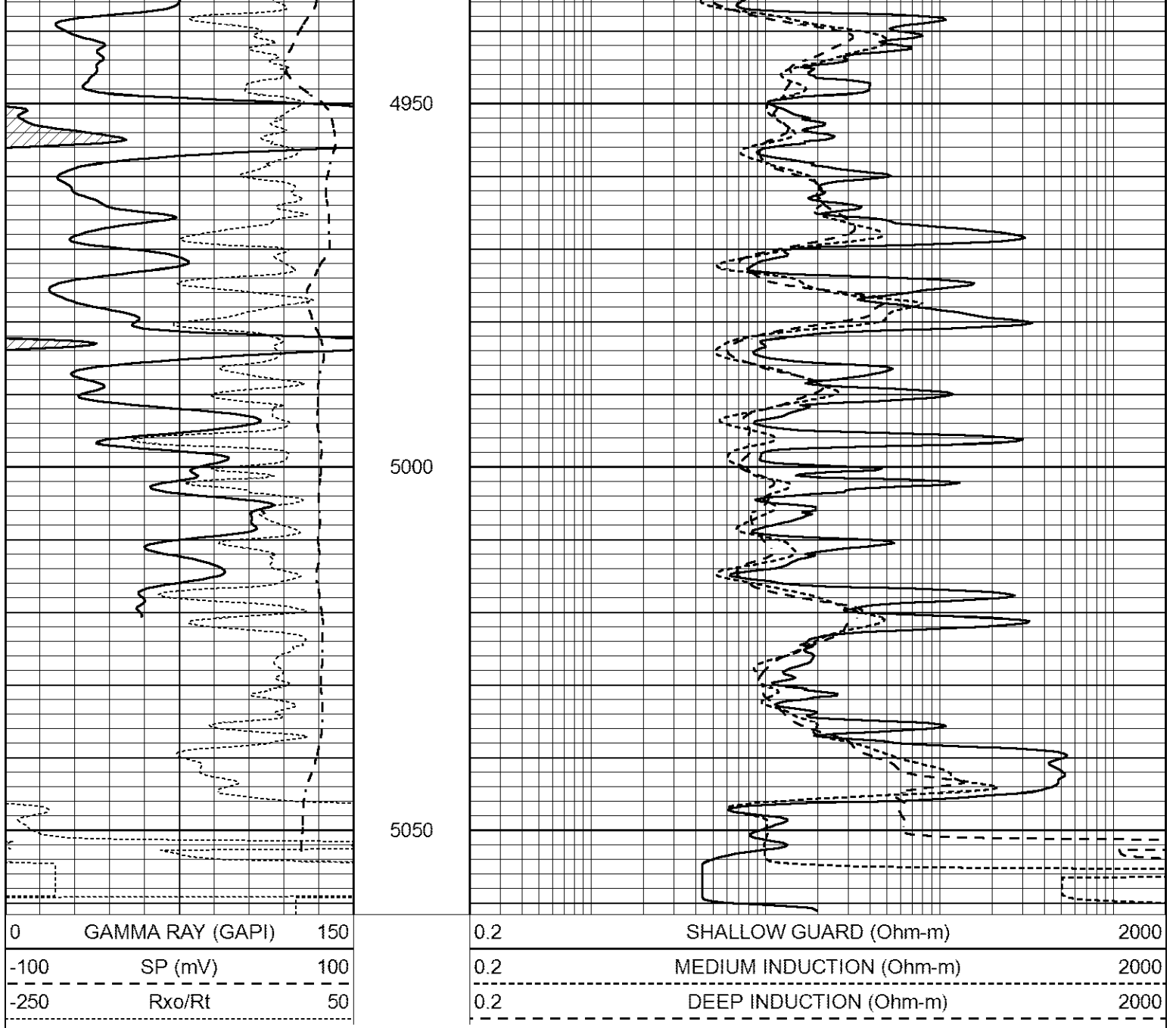
0	GAMMA RAY (GAPI)	150
-100	SP (mV)	100
-250	Rxo/Rt	50

0.2	SHALLOW GUARD (Ohm-m)	2000
0.2	MEDIUM INDUCTION (Ohm-m)	2000
0.2	DEEP INDUCTION (Ohm-m)	2000



4850  
4900





### Calibration Report

Database File      7701pe.db  
 Dataset Pathname   pass3C1  
 Dataset Creation    Thu Jul 06 15:27:54 2023

### Dual Induction Calibration Report

Serial-Model:                      FW1410-55-Probe  
 Surface Cal Performed:            Thu Jun 15 08:08:21 2023  
 Downhole Cal Performed:        Tue Feb 19 11:44:24 2019  
 After Survey Verification Performed:   Tue Feb 19 11:44:27 2019

#### Surface Calibration

Loop:	Readings			References			Results	
	Air	Loop	V	Air	Loop	mmho/m	m	b
Deep	0.011	0.656	V	1.000	400.000	mmho/m	550.000	-7.000
Medium	-0.000	0.731	V	1.000	464.000	mmho/m	510.000	-16.000
Internal:	Zero	Cal		Zero	Cal		m	b

Deep	0.007	0.649	V	0.000	400.000	mmho/m	623.784	-4.595
Medium	0.004	0.743	V	0.000	464.000	mmho/m	627.284	-2.251

Downhole Calibration								
	Readings			References			Results	
	Zero	Cal		Zero	Cal		m'	b'
Deep	-0.824	395.917	mmho/m	-0.976	397.550	mmho/m	1.004	-0.149
Medium	3.565	471.327	mmho/m	3.468	471.590	mmho/m	1.001	-0.099
LL3		7.503	V		1500.000	Ohm-m		
		0.001	V		20.000	Ohm-m		
		-7.481	V		3745.000	mmho-m		

After Survey Verification								
	Readings			Targets			Results	
	Zero	Cal		Zero	Cal		m'	b'
Deep	0.000	0.000	mmho/m	-0.824	395.917	mmho/m	1.000	0.000
Medium	0.000	0.000	mmho/m	3.565	471.327	mmho/m	1.000	0.000
LL3		0.000	Ohm-m		1500.000	Ohm-m		
		0.000	Ohm-m		20.000	Ohm-m		
		0.000	mmho-m		3745.000	mmho-m		

Litho Density Calibration Report  
Serial: 140704  
Model: V4\_10P  
Source Number: 74GBq-19

Master Calibration				Performed: Fri May 12 10:26:47 2023			
	Background	Aluminum		Magnesium			
Window 1	521.46	5212.91		23528.37	cps		
Window 2	43.81	1175.90		6160.42	cps		
Window 4	226.45	1217.97		4891.35	cps		
Window 5	519.17	8959.34		17037.10	cps		
Window 6	39.35	1453.85		2926.68	cps		
Window 8	253.66	2919.24		5361.51	cps		
Bulk Density	-	2.6020		1.6830	g/cc		
Pe	-	3.0000		2.5070	b/e		
LS Alpha:	: -1.7699	SS Alpha:	: -0.7448	LS CPE:		: 1.1844	
LS Beta:	: 101708.6271	SS Beta:	: 19263.5258	SS CPE:		: 1.5835	

Before Survey Background Counts Verification				Performed: Wed Dec 31 18:00:00 1969			
Window 1	0.00		cps				
Window 2	0.00		cps				
Window 4	0.00		cps				
Window 5	0.00		cps				
Window 6	0.00		cps				
Window 8	0.00		cps				

After Survey Background Counts Verification				Performed: Wed Dec 31 18:00:00 1969			
Window 1	0.00		cps				
Window 2	0.00		cps				
Window 4	0.00		cps				
Window 5	0.00		cps				
Window 6	0.00		cps				
Window 8	0.00		cps				

Lithodensity Caliper Calibration

Performed: Fri May 12 10:26:47 2023

Results		Readings		References (in)		Gain	Offset
Low	High	Low	High				
7228.5	10151.9	8.0	14.0			0.0	-7.2

Before Survey Caliper Verification

Performed:

Caliper (in)	Reference	Reading
_____	_____	_____

After Survey Caliper Verification

Performed:

Caliper (in)	Reference	Reading
_____	_____	_____

Compensated Neutron Calibration Report

Serial Number: 080621PMC  
 Tool Model: NABORS

PRE-SURVEY VERIFICATION

Detector	Readings	Measured	Target
Short Space	cps		
Long Space	cps	pu	pu

POST-SURVEY VERIFICATION

Detector	Readings	Measured	Target
Short Space	cps		
Long Space	cps	pu	pu

Gamma Ray Calibration Report

Serial Number: 7  
 Tool Model: Probe1  
 Performed: Sun Apr 02 09:22:40 2023

Calibrator Value: 1.0 GAPI

Background Reading: 0.0 cps  
 Calibrator Reading: 1.0 cps

Sensitivity: 0.4000 GAPI/cps