



MICRO LOG

Company VINCENT OIL CORPORATION
Well STEELE TRUST #6-28
Field UNNAMED
County FORD State KANSAS

Location: API #: 15-057-21088-0000
Permanent Datum GROUND LEVEL Elevation 2463
Log Measured From KELLY BUSHING 12' A.G.L.
Drilling Measured From KELLY BUSHING
SEC 28 TWP 27S RGE 23W
CDL/CNL/PE
DIL/SON
Elevation
K.B. 2475
D.F. 2473
G.L. 2463

Table with columns: Date, Run Number, Depth Driller, Depth Logger, Bottom Logged Interval, Top Log Interval, Casing Driller, Casing Logger, Bit Size, Type Fluid in Hole, Density / Viscosity, PH / Fluid Loss, Source of Sample, Rim @ Meas. Temp, Rmc @ Meas. Temp, Source of Rmf / Rmc, Rim @ BHT, Time Circulation Stopped, Time Logger on Bottom, Maximum Recorded Temperature, Equipment Number, Location, Recorded By, Witnessed By.

<<< Fold Here >>>

All interpretations are opinions based on inferences from electrical or other measurements and we cannot and do not guarantee the accuracy or correctness of any interpretation, and we shall not, except in the case of gross or willful negligence on our part, be liable or responsible for any loss, costs, damages, or expenses incurred or sustained by anyone resulting from any interpretation made by any of our officers, agents or employees. These interpretations are also subject to our general terms and conditions set out in our current Price Schedule.

Comments

THANK YOU FOR USING ELI WIRELINE SERVICES, HAYS, KS. (785) 628-6395

DIRECTIONS:

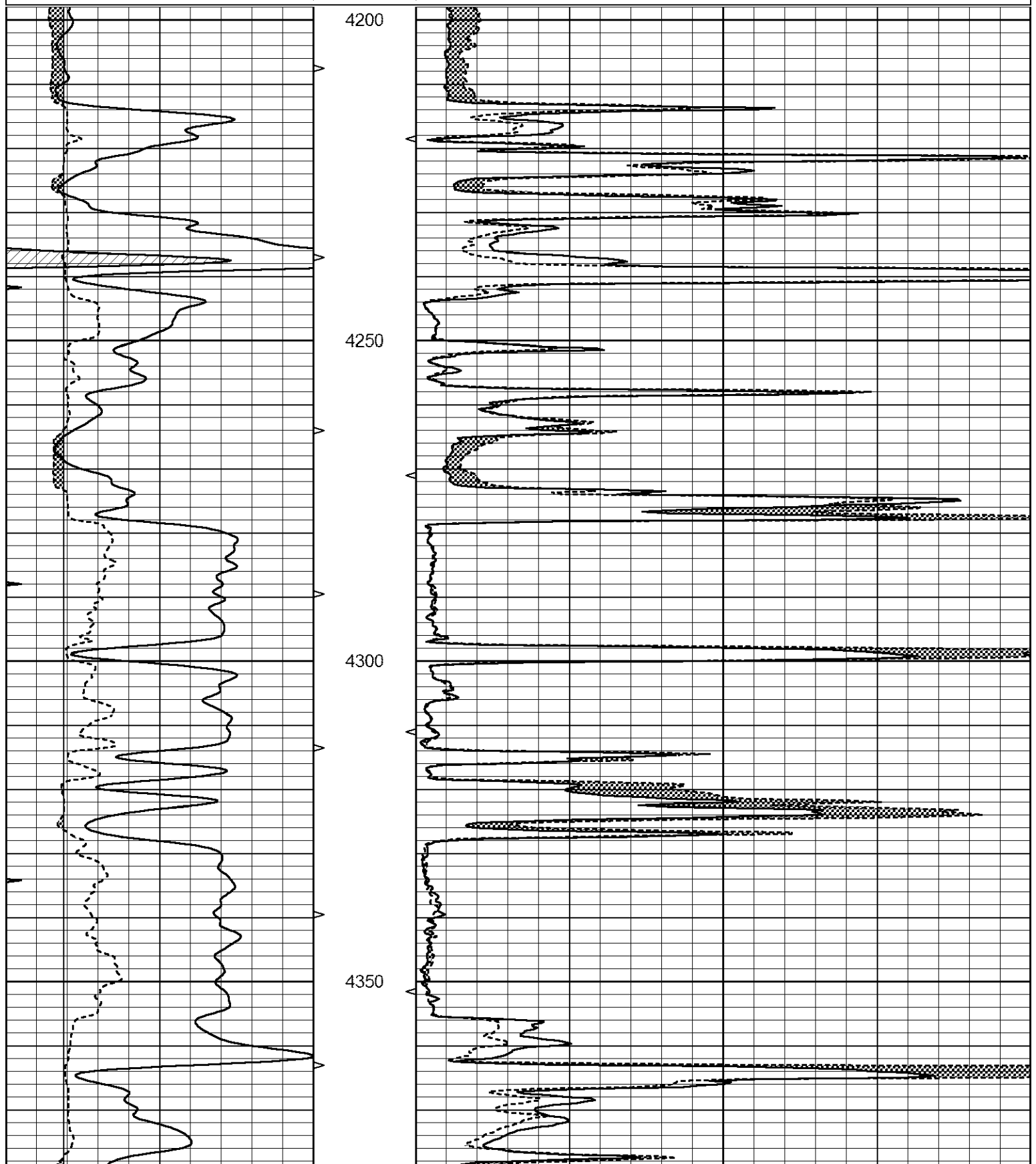
FROM FORD KANSAS GO NORTH ONE MILE TO SADDLE ROAD (FORD-ENSIGN), FOUR MILES WEST TO ROAD 121, ONE MILE NORTH, WEST INTO

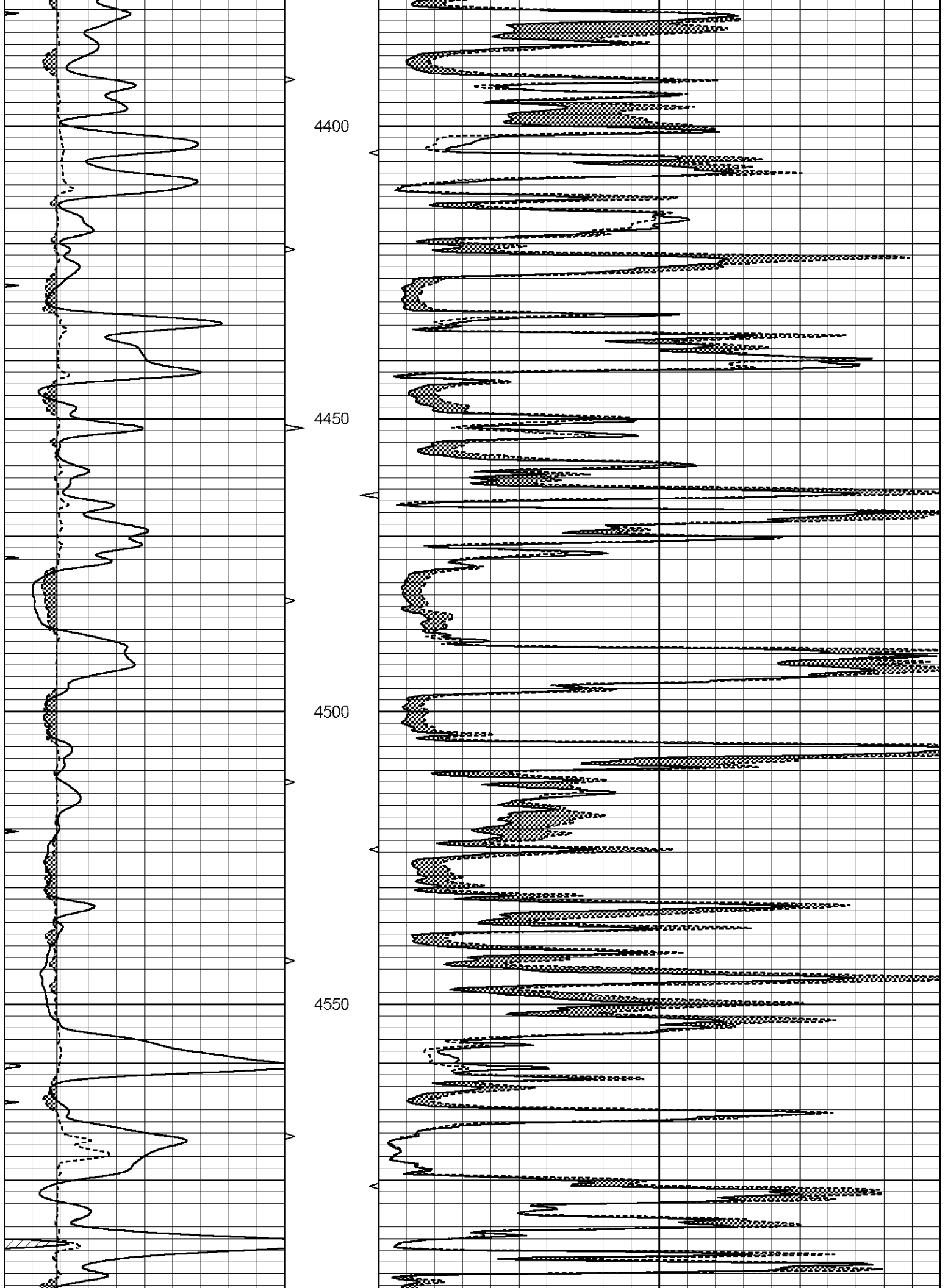


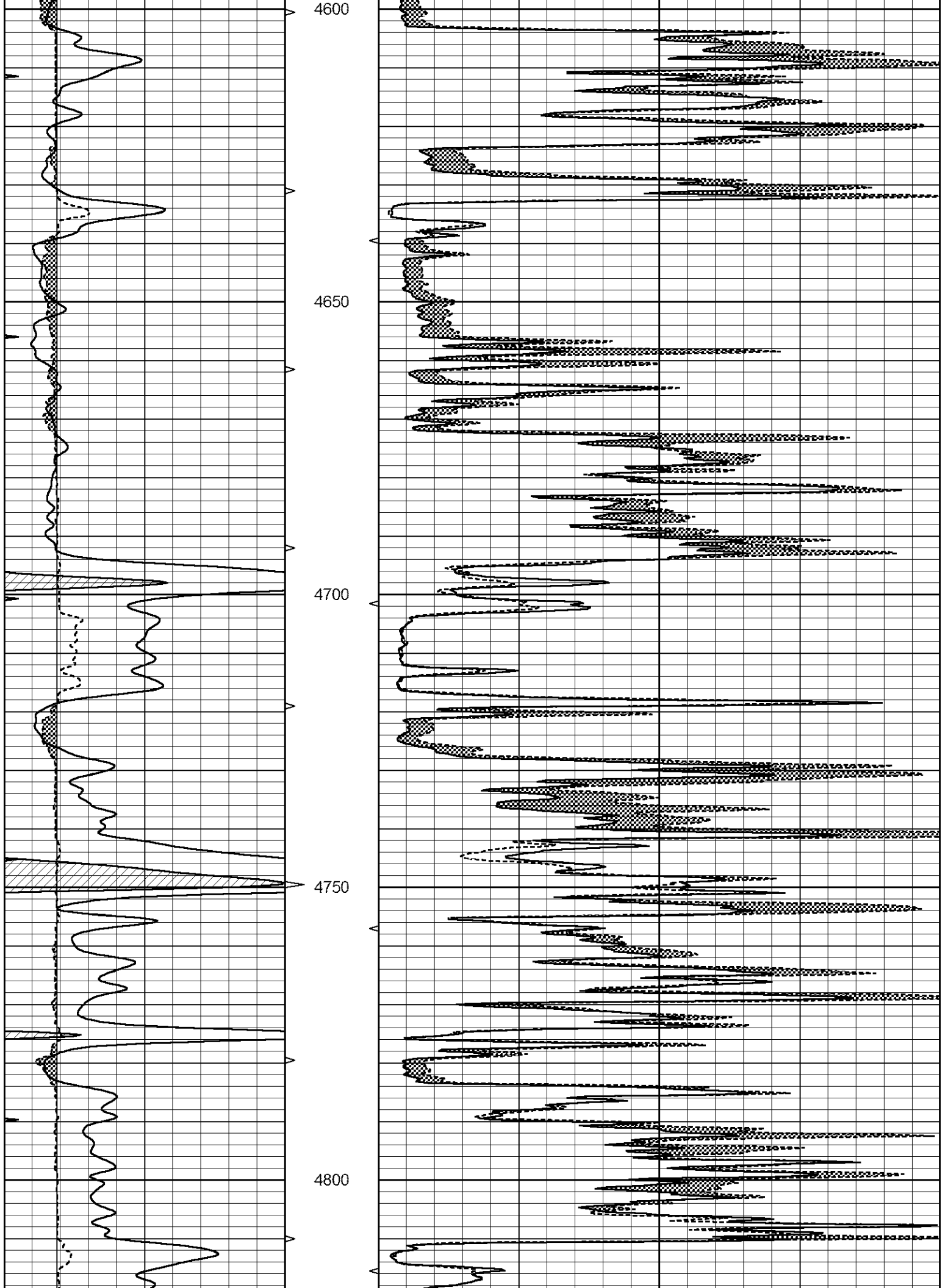
MAIN SECTION

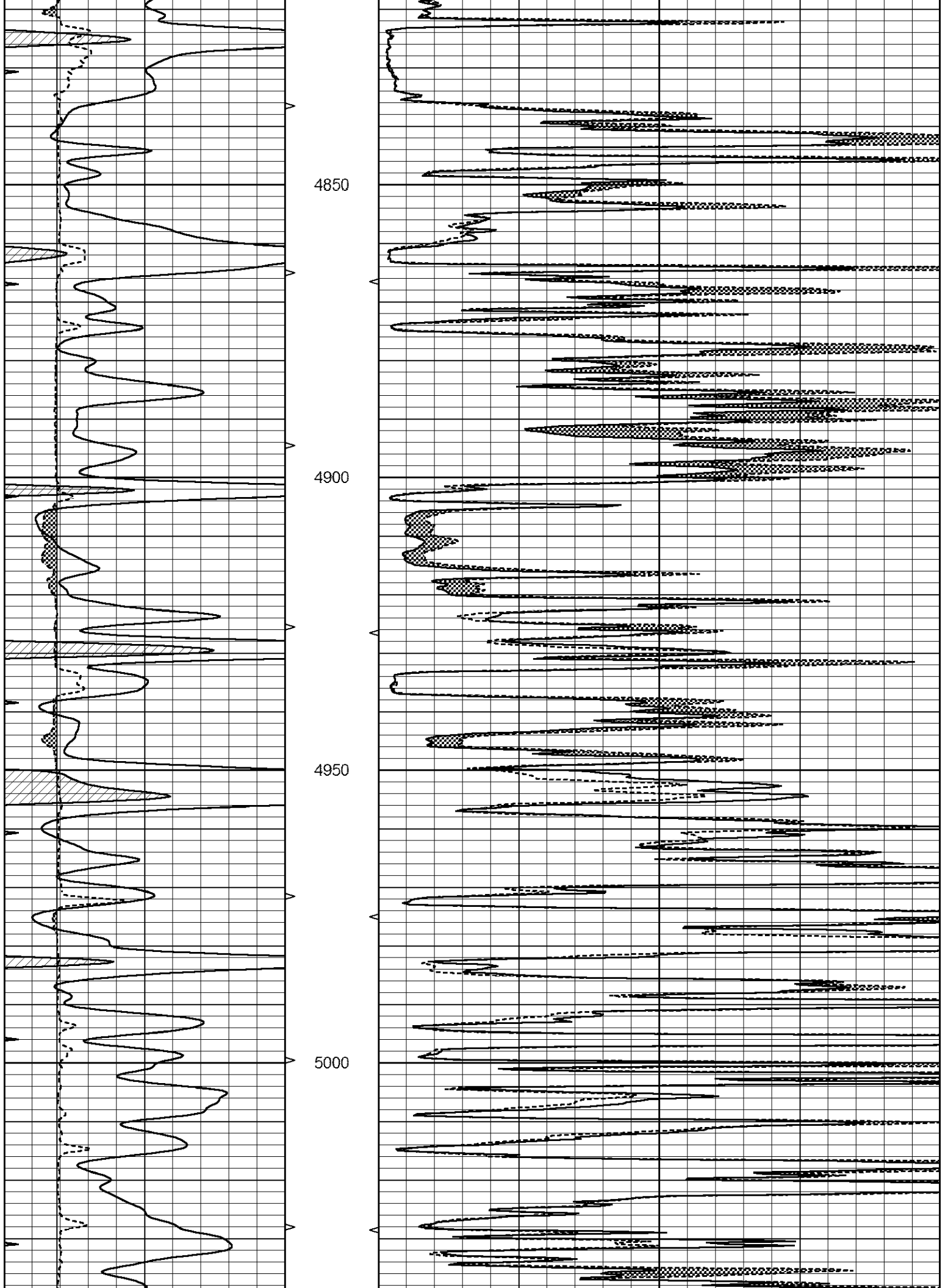
Database File 7701pe.db
 Dataset Pathname pass19T
 Presentation Format _micro
 Dataset Creation Thu Jul 06 16:04:10 2023
 Charted by Depth in Feet scaled 1:240

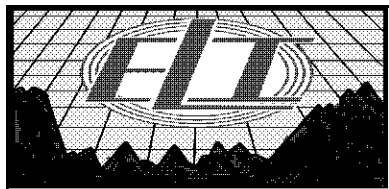
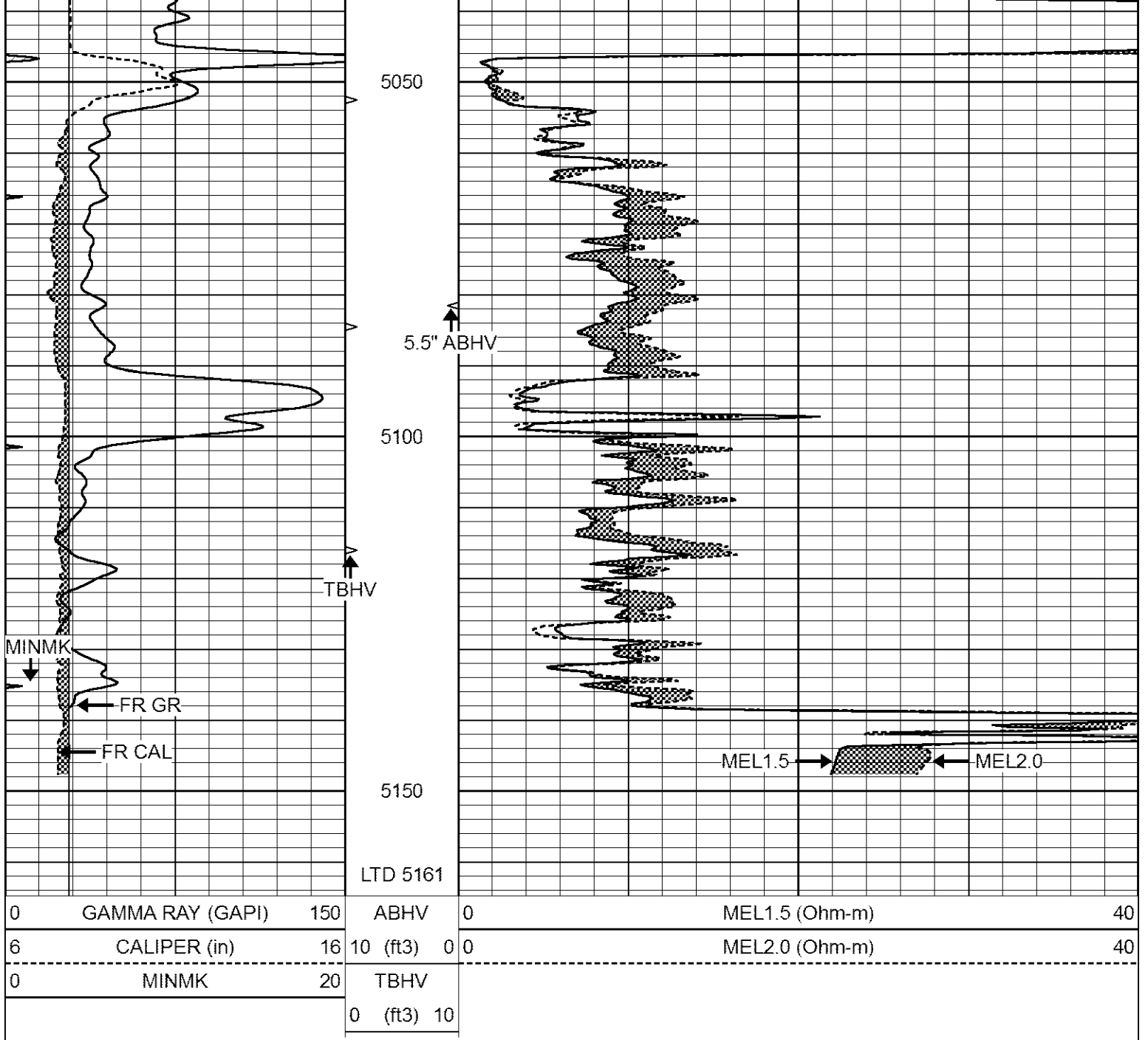
0	GAMMA RAY (GAPI)	150	ABHV	0	MEL1.5 (Ohm-m)	40
6	CALIPER (in)	16	10 (ft3)	0	MEL2.0 (Ohm-m)	40
0	MINMK	20	TBHV			
			0 (ft3)	10		







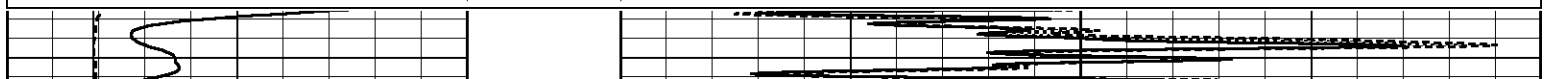


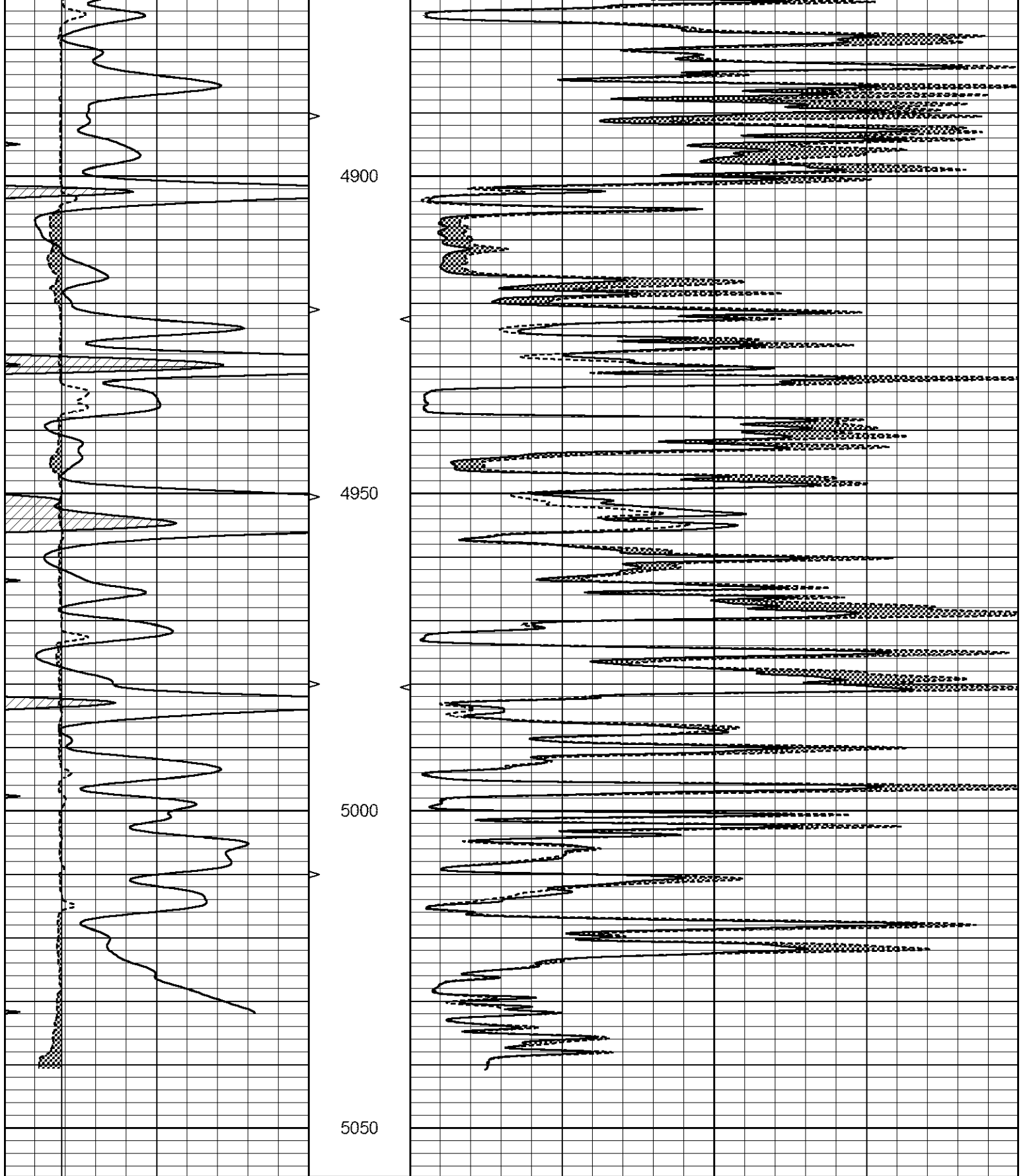


REPEAT SECTION

Database File 7701pe.db
 Dataset Pathname pass8R
 Presentation Format _micro
 Dataset Creation Thu Jul 06 01:09:58 2023
 Charted by Depth in Feet scaled 1:240

0	GAMMA RAY (GAPI)	150	ABHV	0	MEL1.5 (Ohm-m)	40
6	CALIPER (in)	16	10 (ft3)	0 0	MEL2.0 (Ohm-m)	40
0	MINMK	20	TBHV			
			0 (ft3)	10		





0	GAMMA RAY (GAPI)	150	ABHV	0	MEL1.5 (Ohm-m)	40
6	CALIPER (in)	16	10 (ft3)	0 0	MEL2.0 (Ohm-m)	40
0	MINMK	20	TBHV			
			0 (ft3)	10		

MICRO_USR Calibration Report

Serial Number: 070911
 Tool Model: ProbeL
 Performed: Tue Jun 27 10:27:40 2023

Caliper Calibration: Gain=4.500 Offset=0.160
 References Low Cal High Cal
 8.000 14.000
 Readings 1.451 3.049

1.5" Calibration: Gain=30.000 Offset=-0.500
 References Low Cal High Cal
 0.000 20.000
 Readings 0.004 0.843

2" Calibration: Gain=40.000 Offset=-0.800
 References Low Cal High Cal
 0.000 20.000
 Readings 0.021 0.810

Microlog Calibration Report

Serial-Model: 070911-ProbeL
 Performed: Sat May 14 04:48:25 2022

	Readings			References			Results	
	Zero	Cal		Zero	Cal		m	b
Normal	0.0002	0.4836	V	0.0000	10.0000	Ohm-m	20.6908	-0.0051
Inverse	0.0018	0.6297	V	0.0000	10.0000	Ohm-m	15.9263	-0.0282
Caliper	0.0000	1.0000	V	0.0000	1.0000	in	1.0000	0.0000

Gamma Ray Calibration Report

Serial Number: 070558
 Tool Model: Probe1
 Performed: Fri Mar 31 09:04:23 2023

Calibrator Value: 1.0 GAPI

Background Reading: 0.0 cps
 Calibrator Reading: 1.0 cps

Sensitivity: 0.2500 GAPI/cps