



SONIC LOG

Company VINCENT OIL CORPORATION
Well STEELE TRUST #6-28
Field UNNAMED
County FORD State KANSAS

Location: API #: 15-057-21088-0000
260' FSL & 280' FEEL
SE - SE - SE - SE
SEC 28 TWP 27S RGE 23W
Permanent Datum GROUND LEVEL Elevation 2463
Log Measured From KELLY BUSHING 12' A.G.L.
Drilling Measured From KELLY BUSHING
Other Services
CDL/CNL/PE
DIL/MEL
Elevation
K.B. 2475
D.F. 2473
G.L. 2463

Date	7/6/23
Run Number	TWO
Depth Driller	5165
Depth Logger	5161
Bottom Logged Interval	5153
Top Log Interval	650
Casing Driller	8 5/8" @ 689
Casing Logger	683
Bit Size	7 7/8
Type Fluid in Hole	CHEMICAL MUD
Density / Viscosity	9.2/47
PH / Fluid Loss	9.5/11.2
Source of Sample	FLOWLINE
Rm @ Meas. Temp	.350 @ 80F
Rmt @ Meas. Temp	.263 @ 80F
Rmc @ Meas. Temp	.420 @ 80F
Source of Rmf / Rmc	MEASUREMENT
Rm @ BHT	.222 @ 126F
Time Circulation Stopped	3 HOURS
Time Logger on Bottom	12:30 A.M.
Maximum Recorded Temperature	126F
Equipment Number	8916
Location	HAYS, KANSAS
Recorded By	COLE ROBBEN
Witnessed By	TOM DUDGEON

<<< Fold Here >>>

All interpretations are opinions based on inferences from electrical or other measurements and we cannot and do not guarantee the accuracy or correctness of any interpretation, and we shall not, except in the case of gross or willful negligence on our part, be liable or responsible for any loss, costs, damages, or expenses incurred or sustained by anyone resulting from any interpretation made by any of our officers, agents or employees. These interpretations are also subject to our general terms and conditions set out in our current Price Schedule.

Comments

THANK YOU FOR USING ELI WIRELINE SERVICES, HAYS, KS. (785) 628-6395

DIRECTIONS:

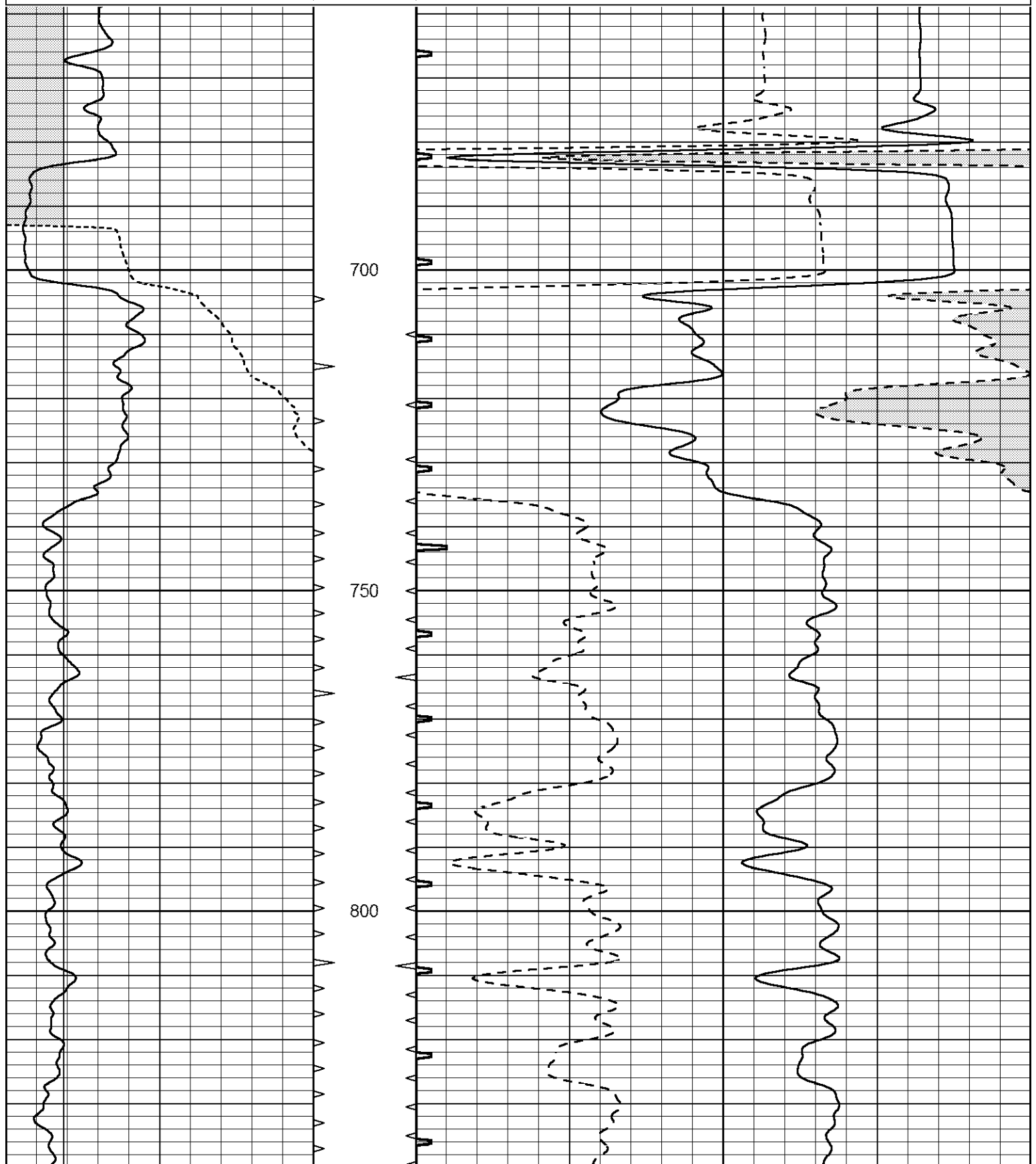
FROM FORD KANSAS GO NORTH ONE MILE TO SADDLE ROAD (FORD-ENSIGN), FOUR MILES WEST TO ROAD 121, ONE MILE NORTH, WEST INTO

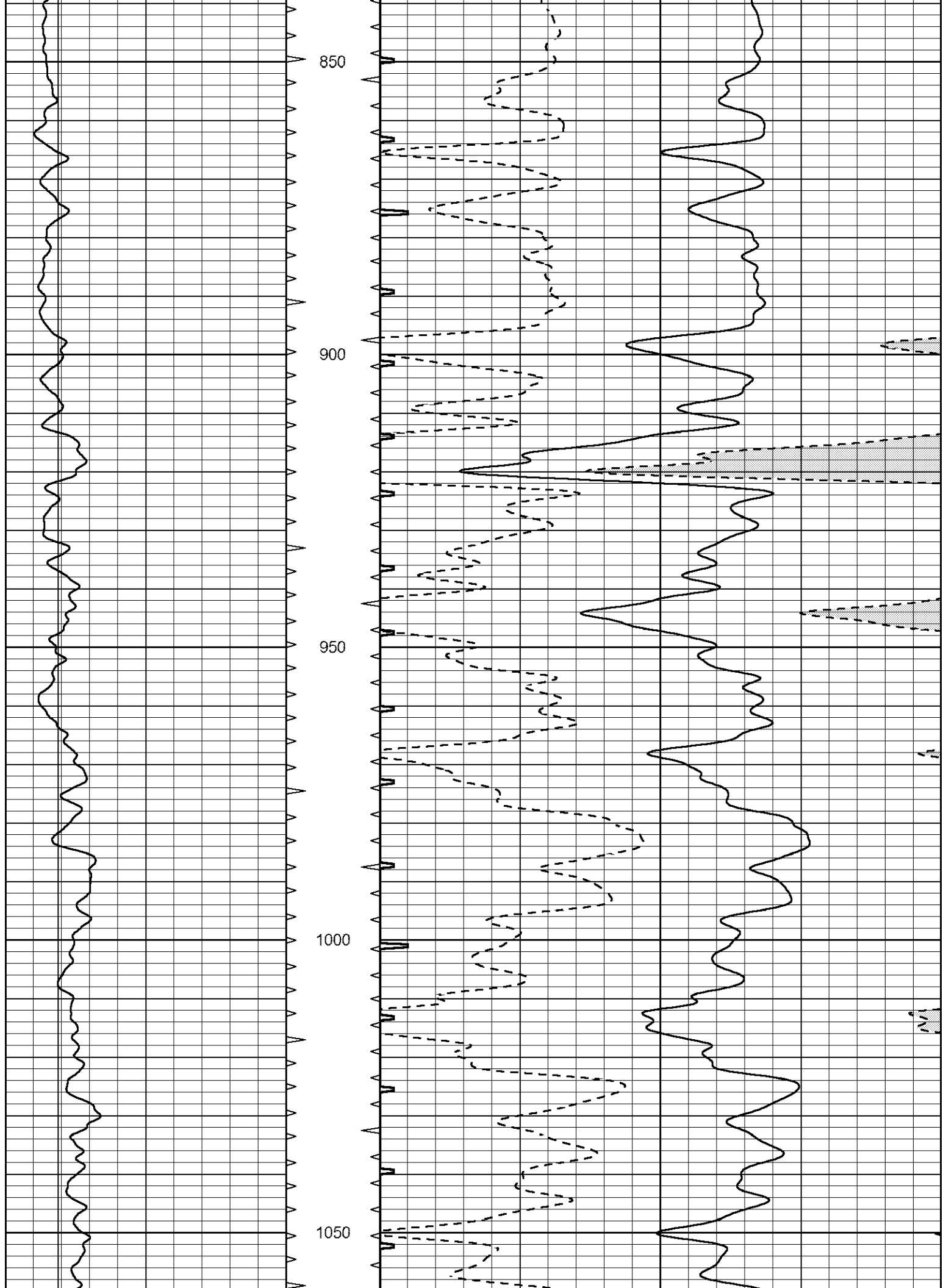


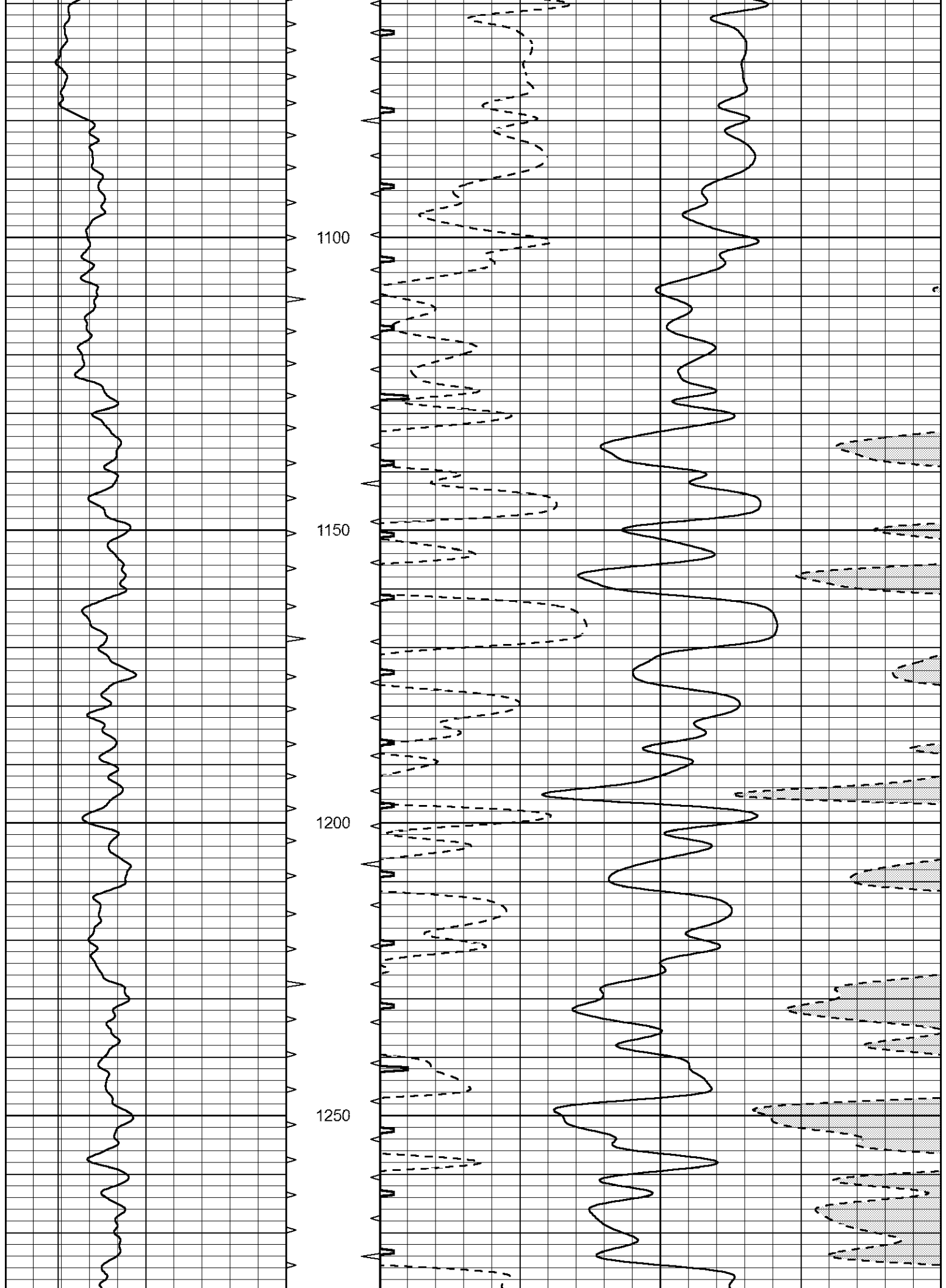
MAIN SECTION

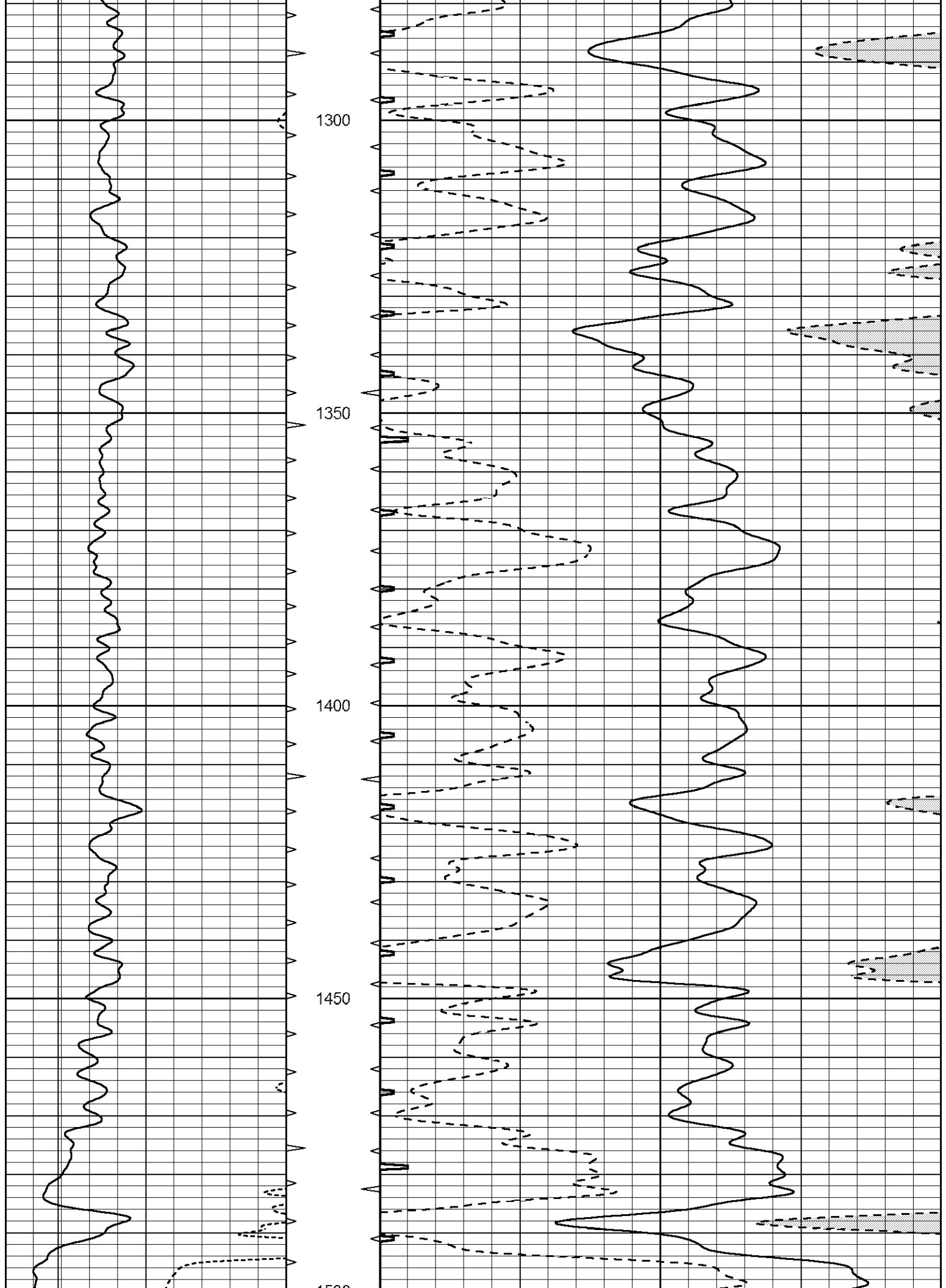
Database File 7701pe.db
 Dataset Pathname pass19T
 Presentation Format _slt
 Dataset Creation Thu Jul 06 16:04:10 2023
 Charted by Depth in Feet scaled 1:240

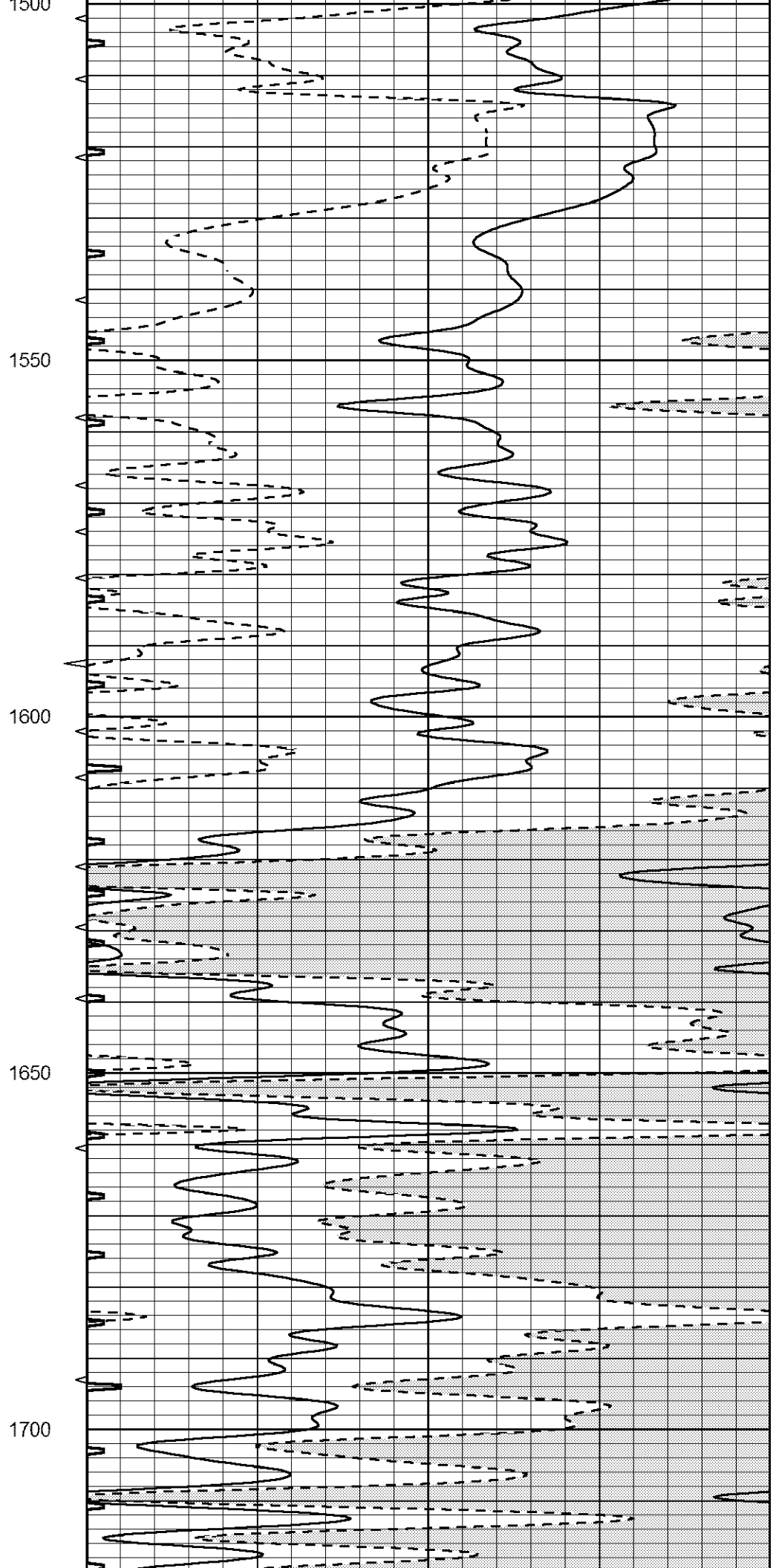
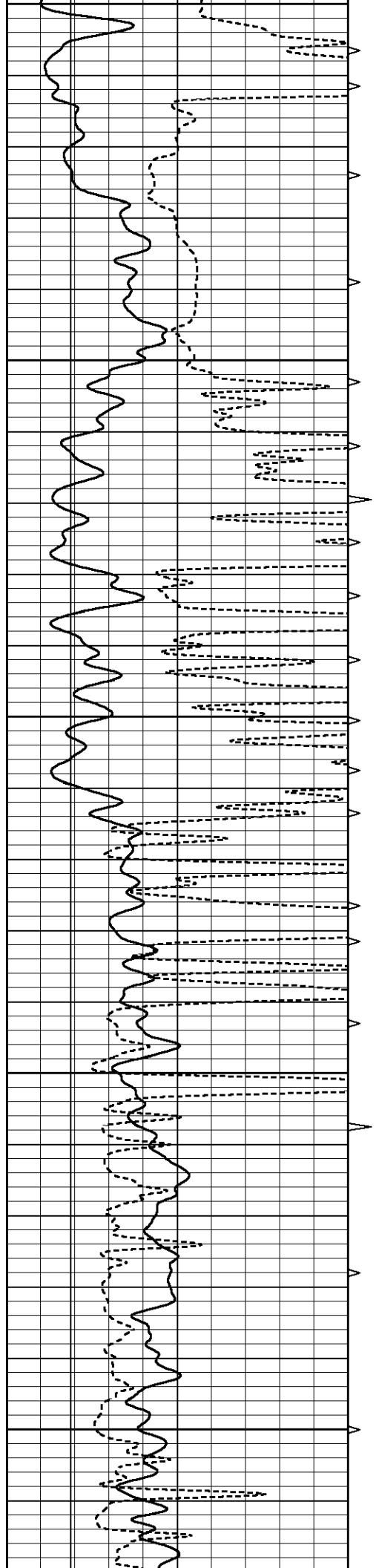
0	GAMMA RAY (GAPI)	150	ABHV	140	DELTA TIME (usec/ft)	40	
6	CALIPER (in)	16	10 (ft3)	0	30	SONIC POROSITY (pu)	-10
			TBHV	0	ITT (msec)	20	
			0 (ft3)	10			

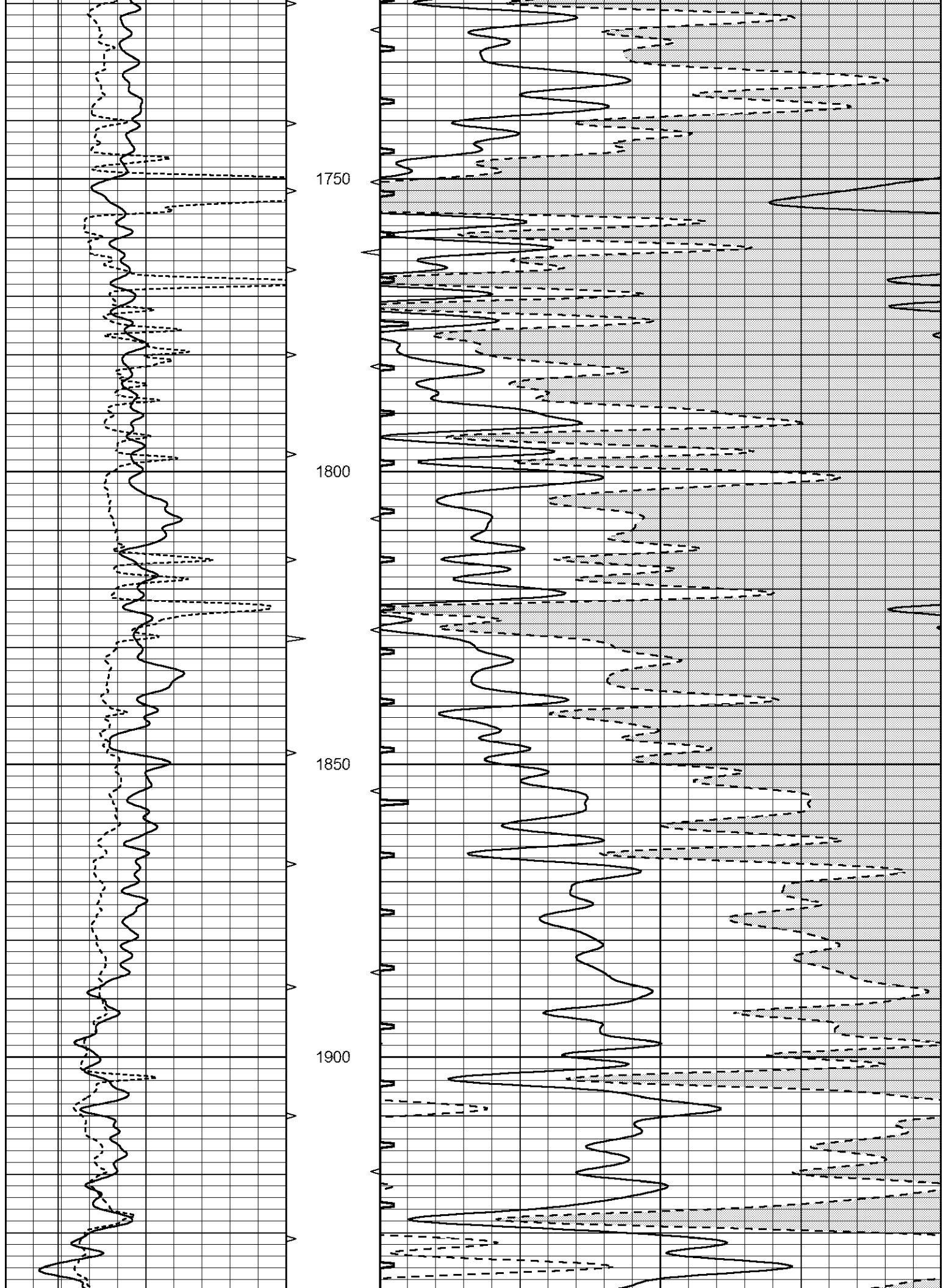


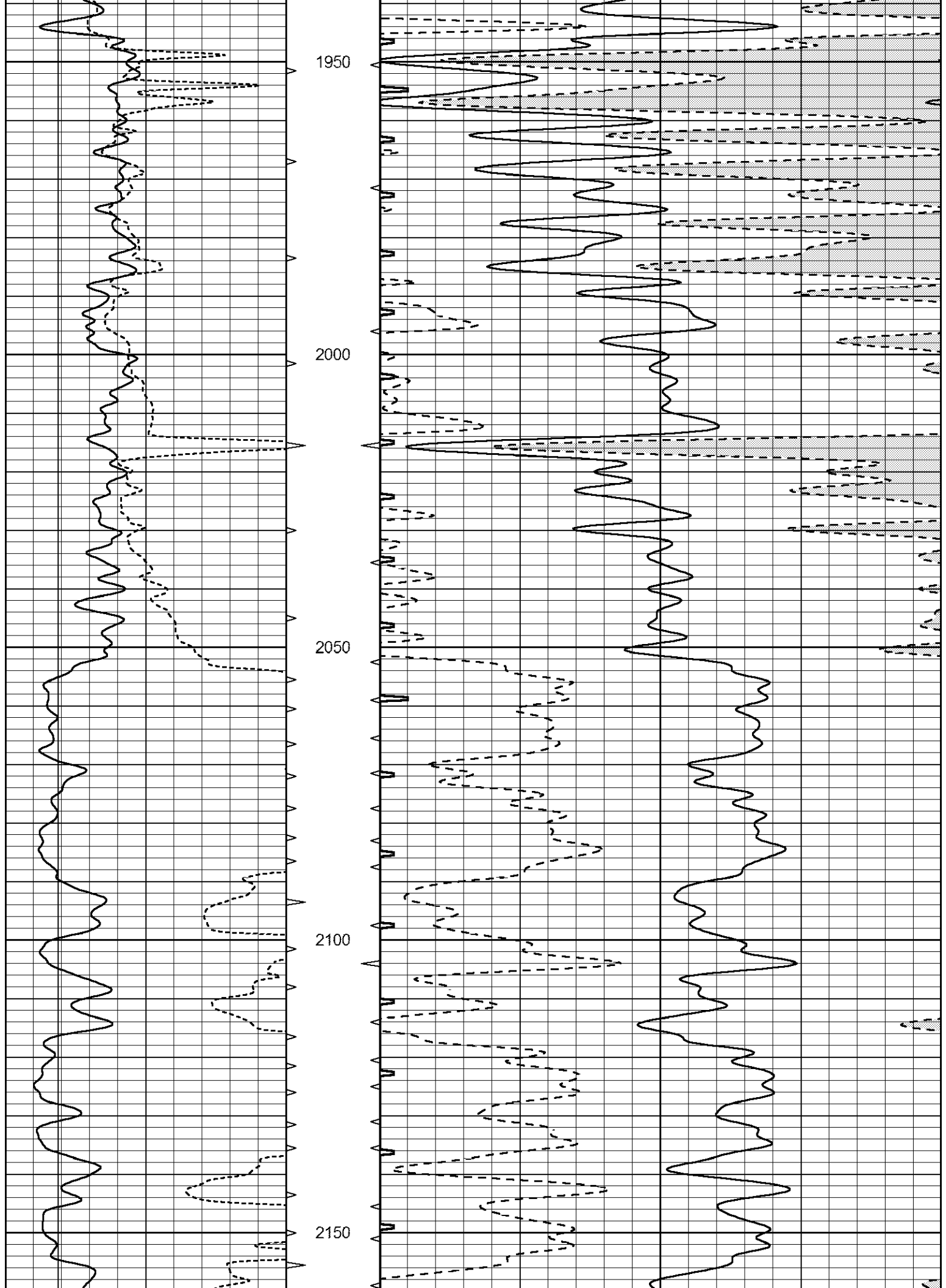


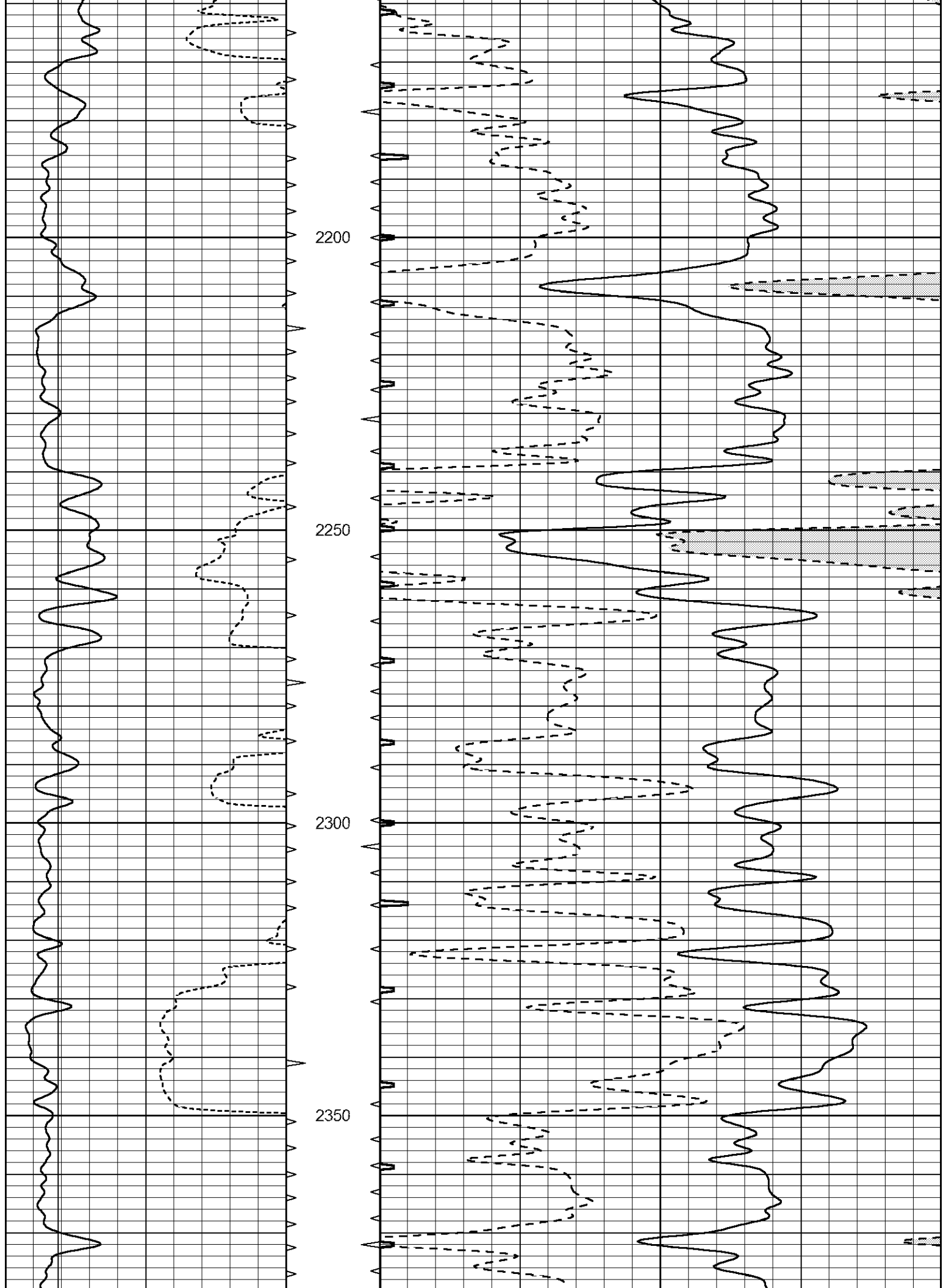


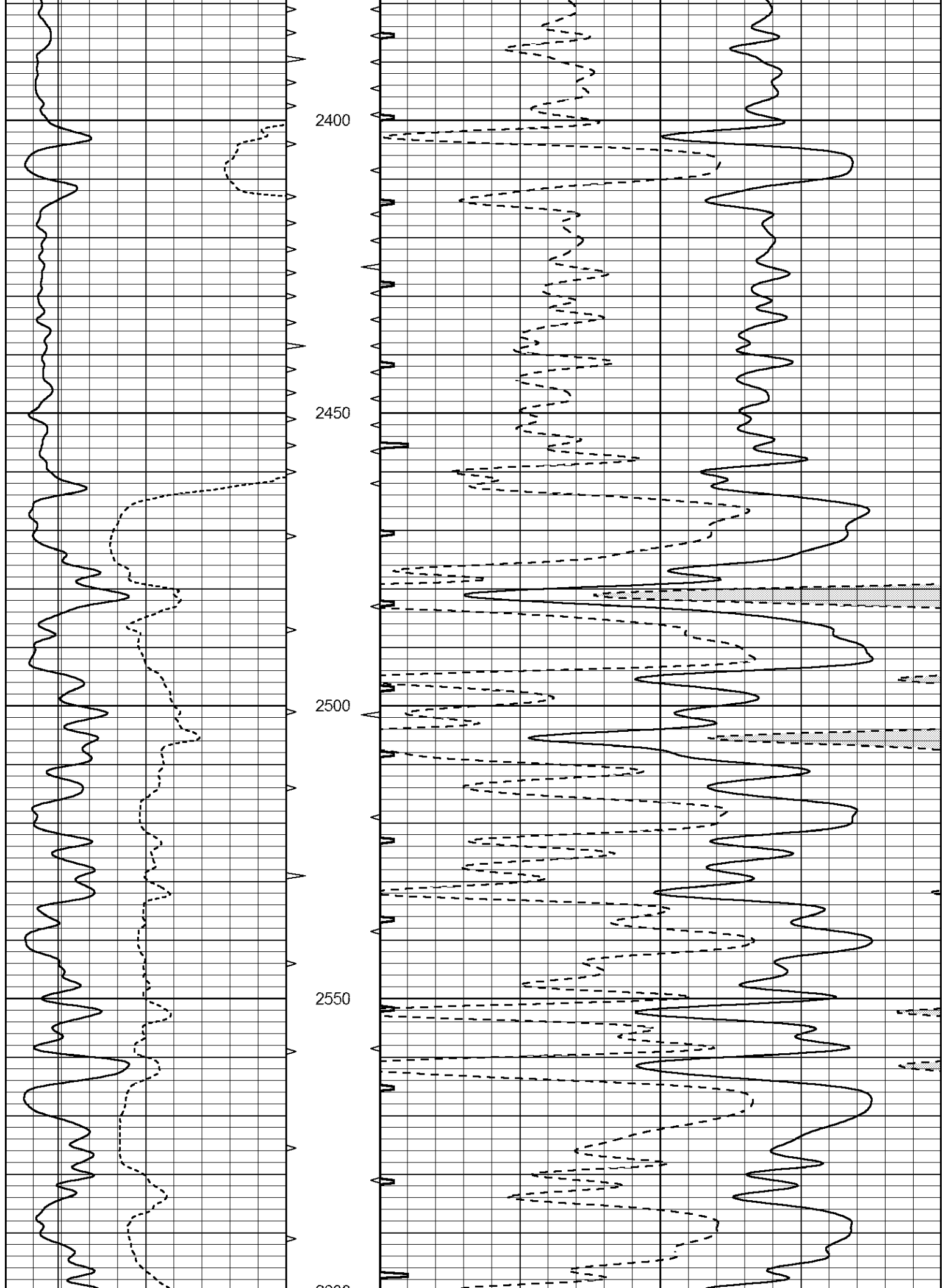


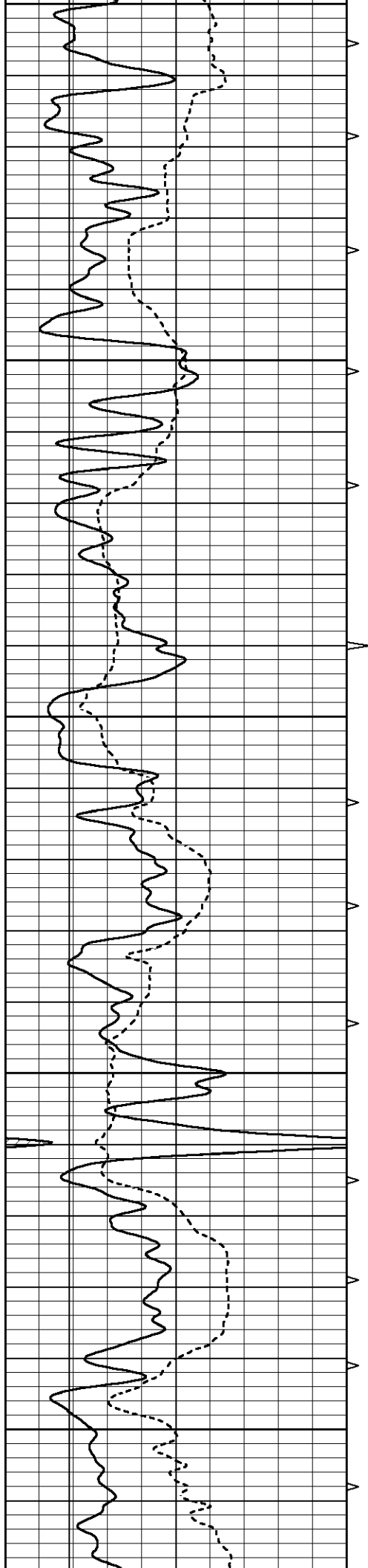












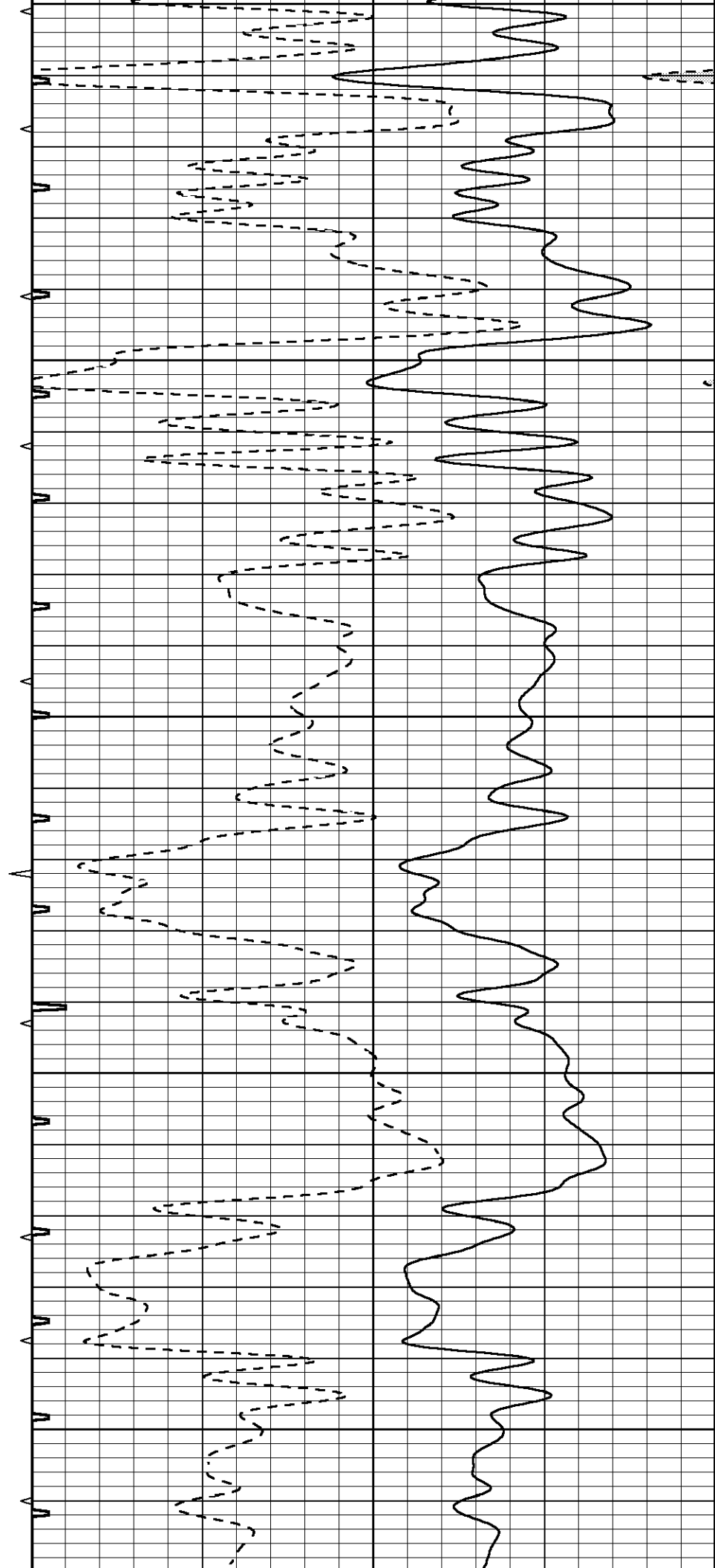
2600

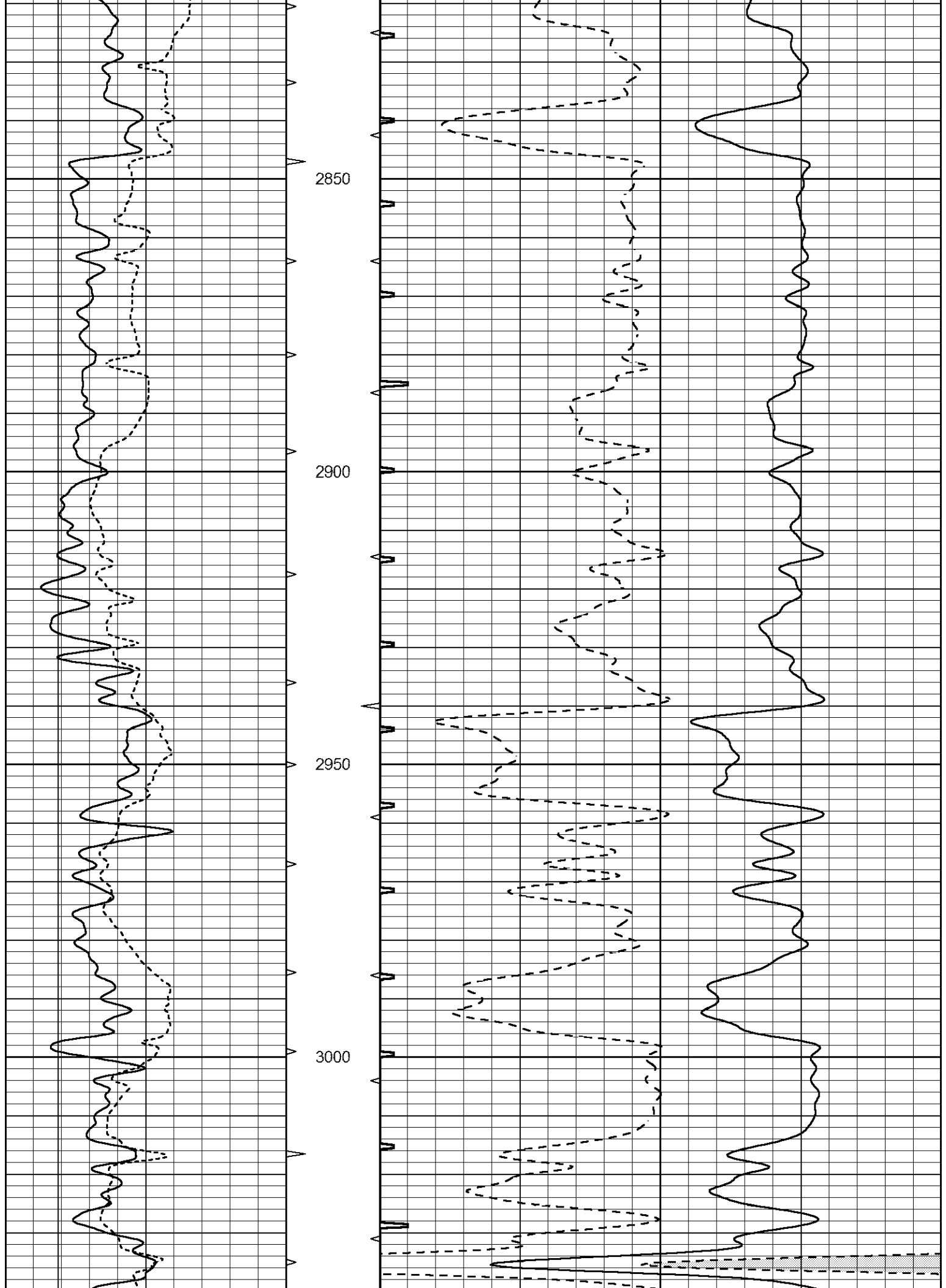
2650

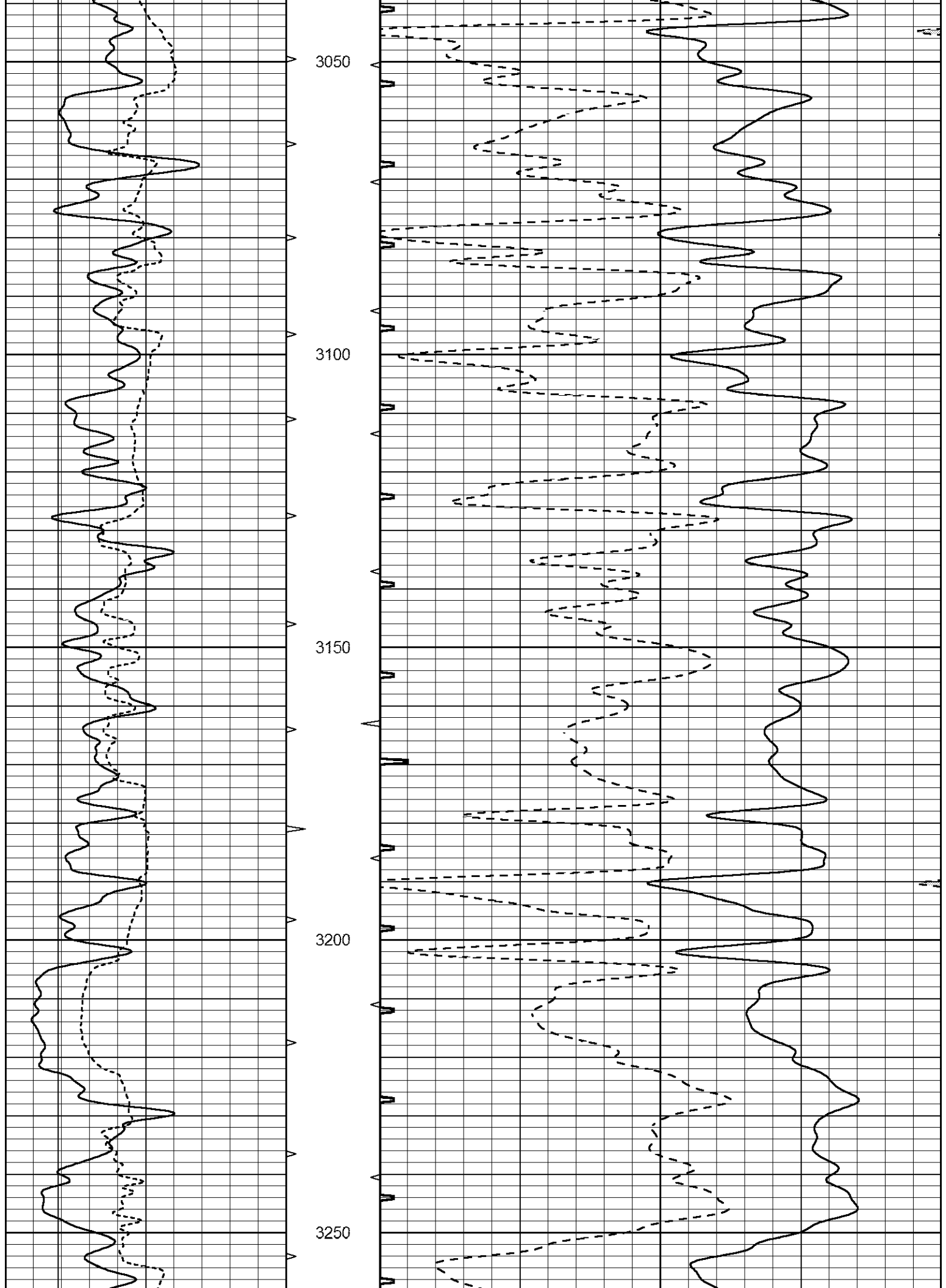
2700

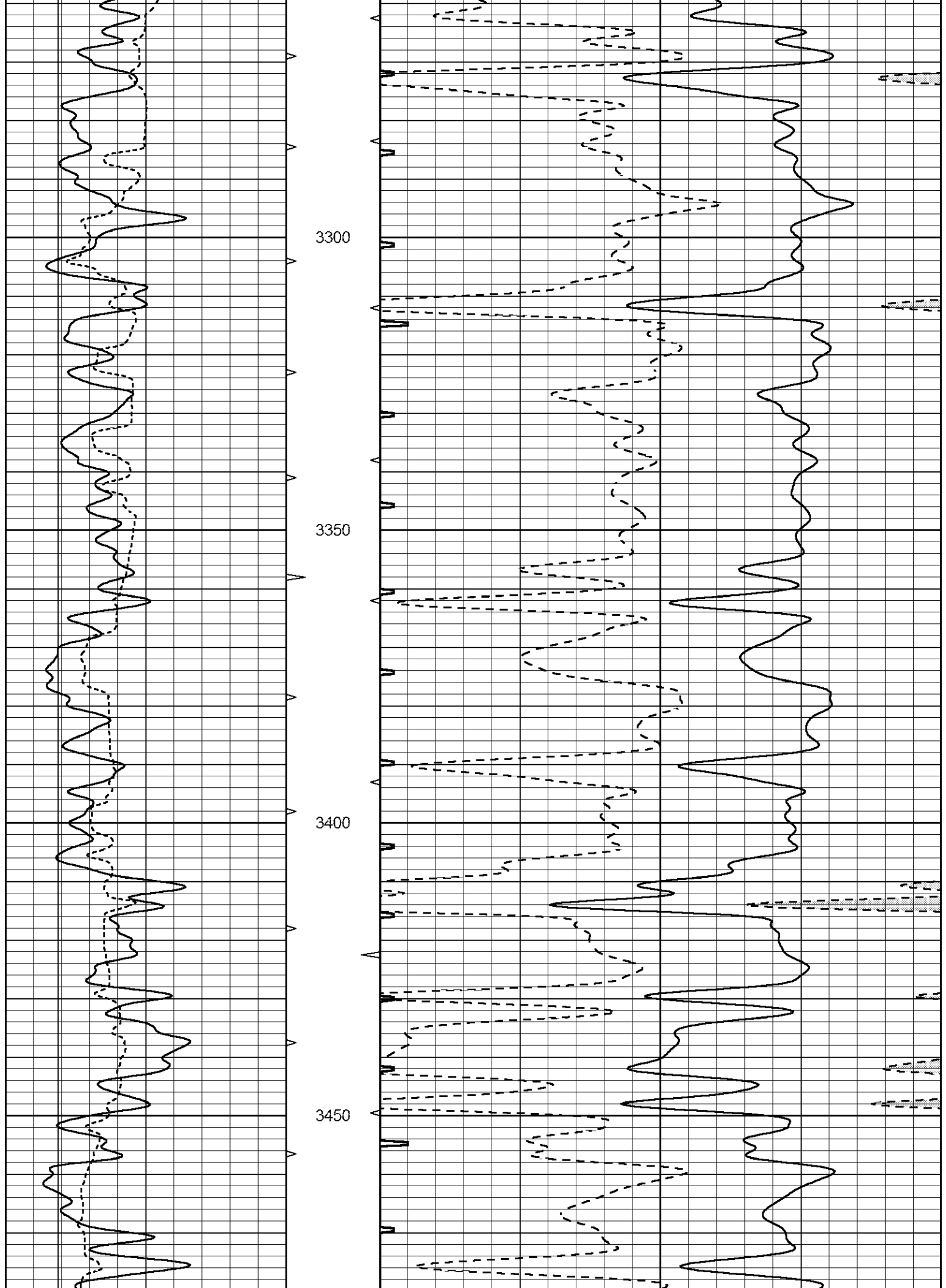
2750

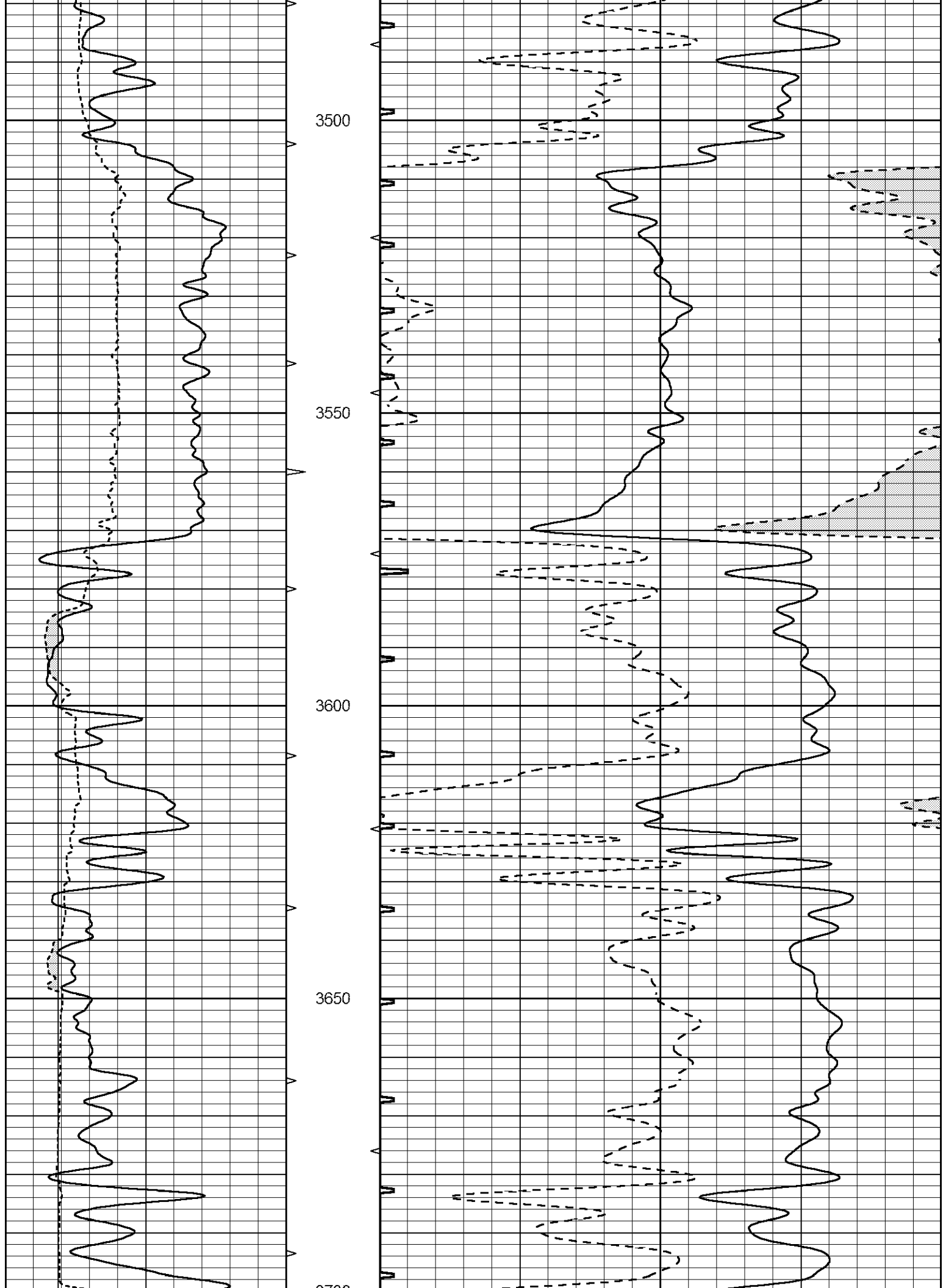
2800

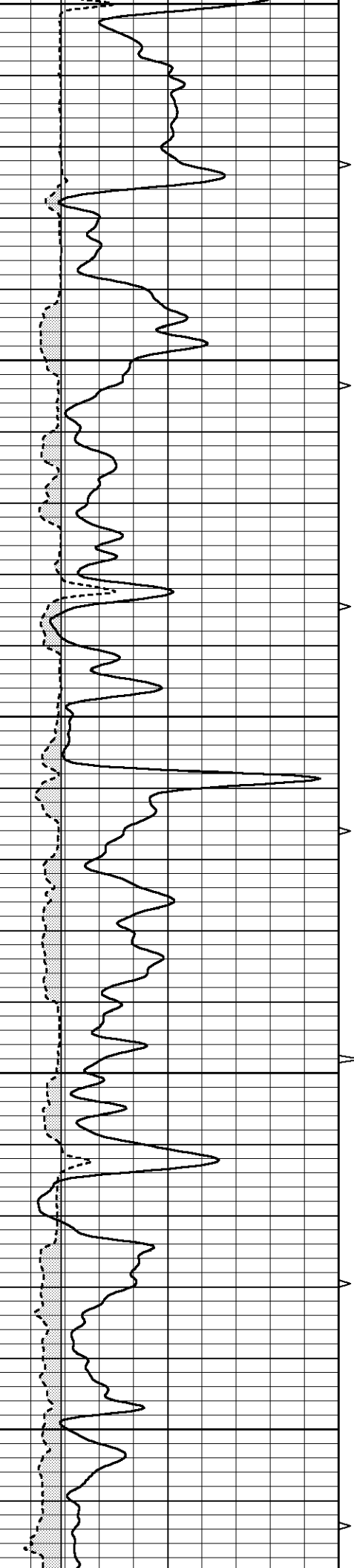




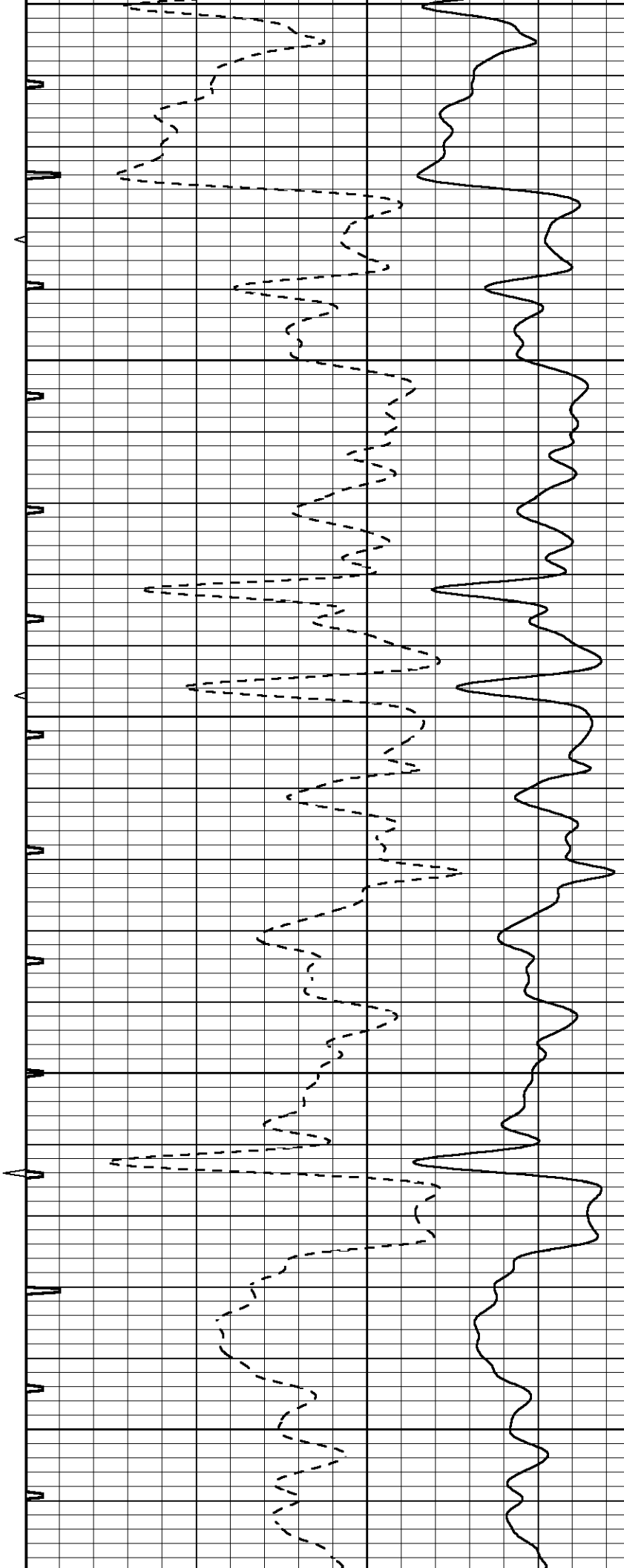


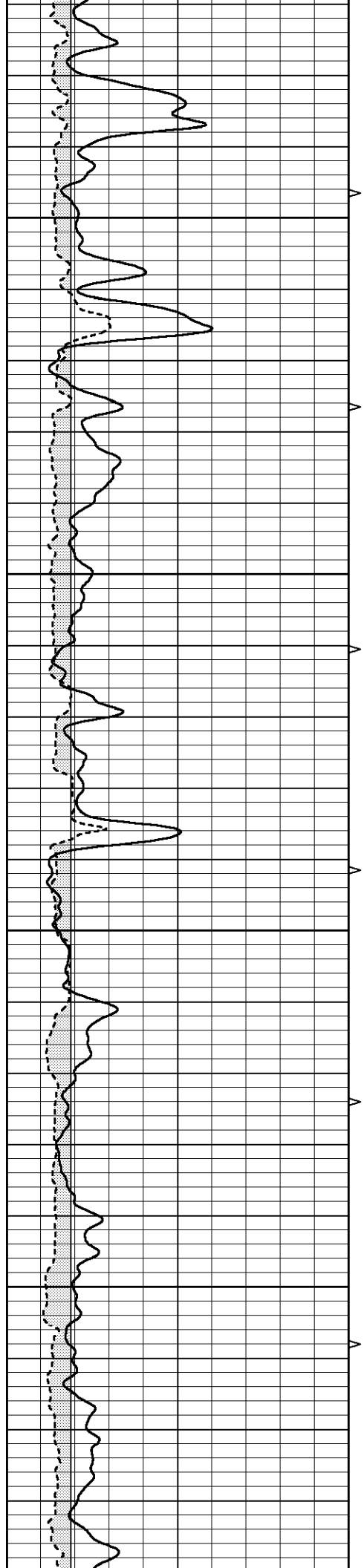






3700
3750
3800
3850
3900



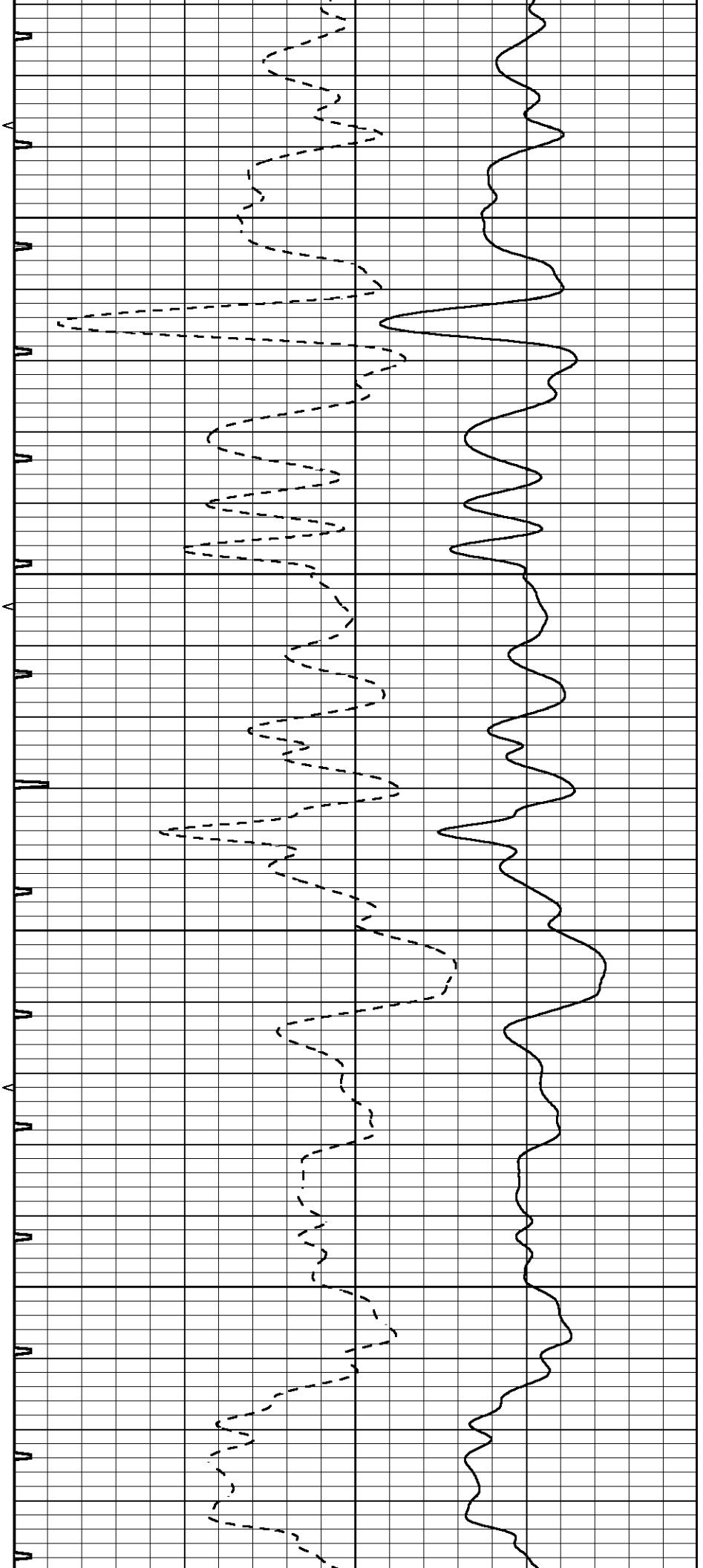


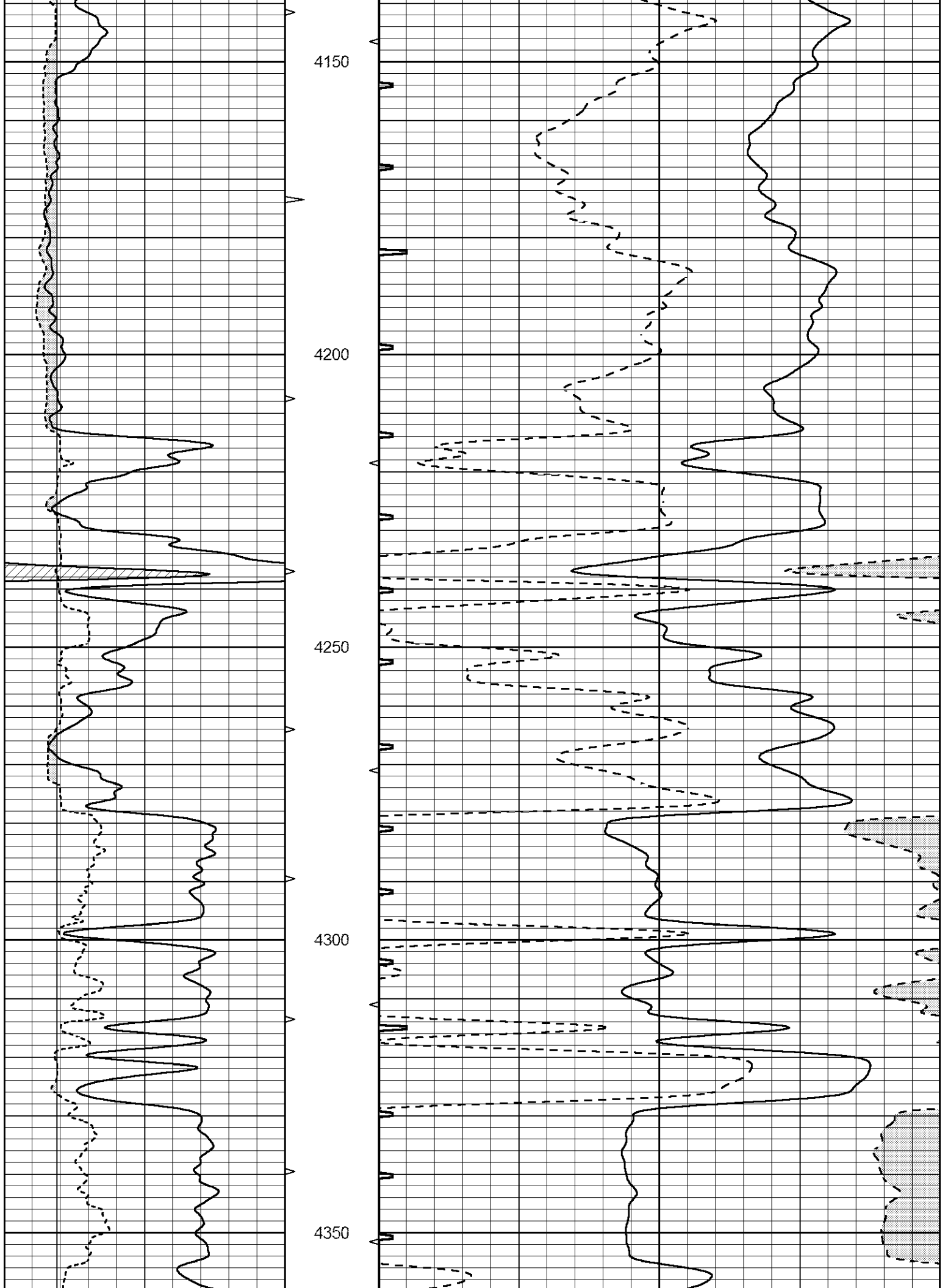
3950

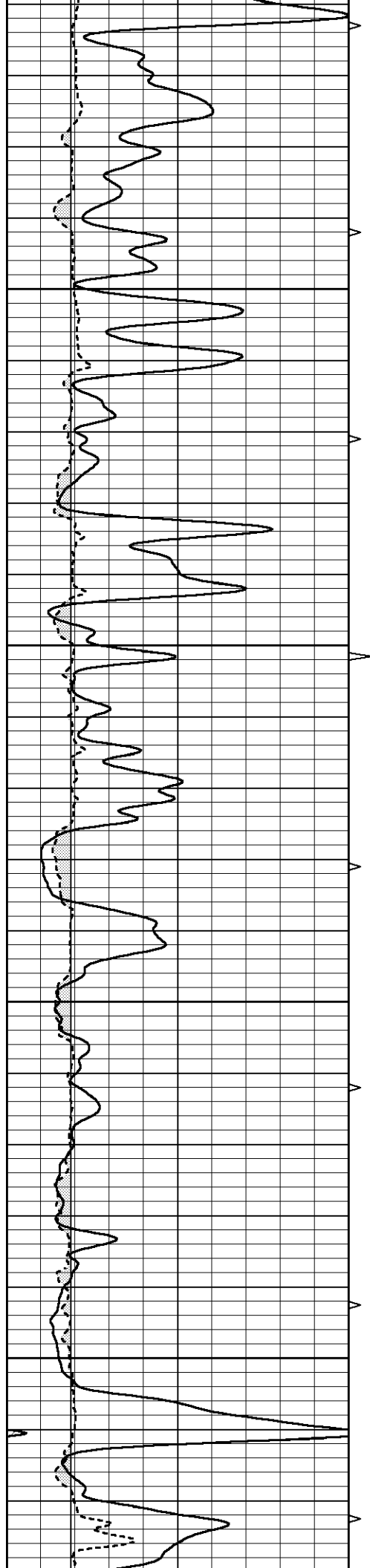
4000

4050

4100





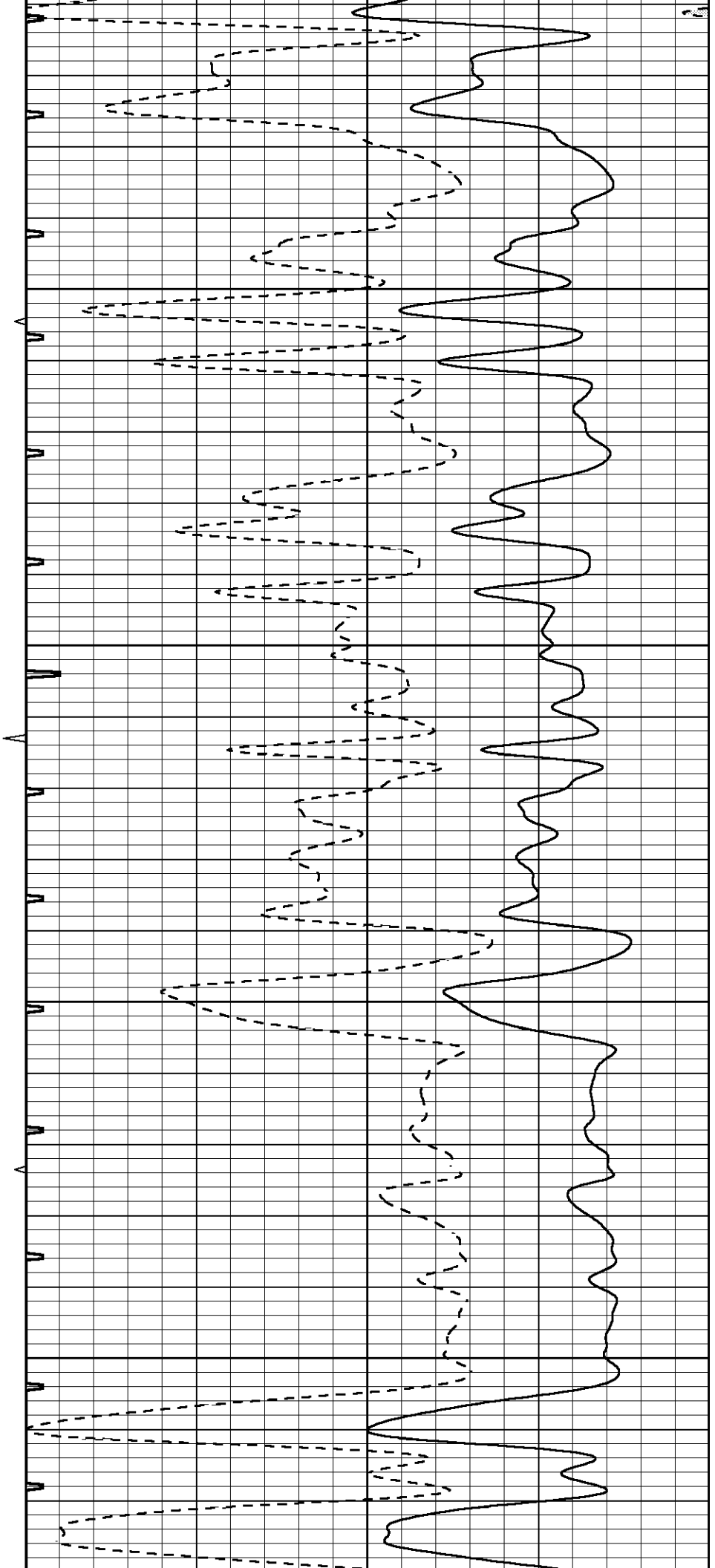


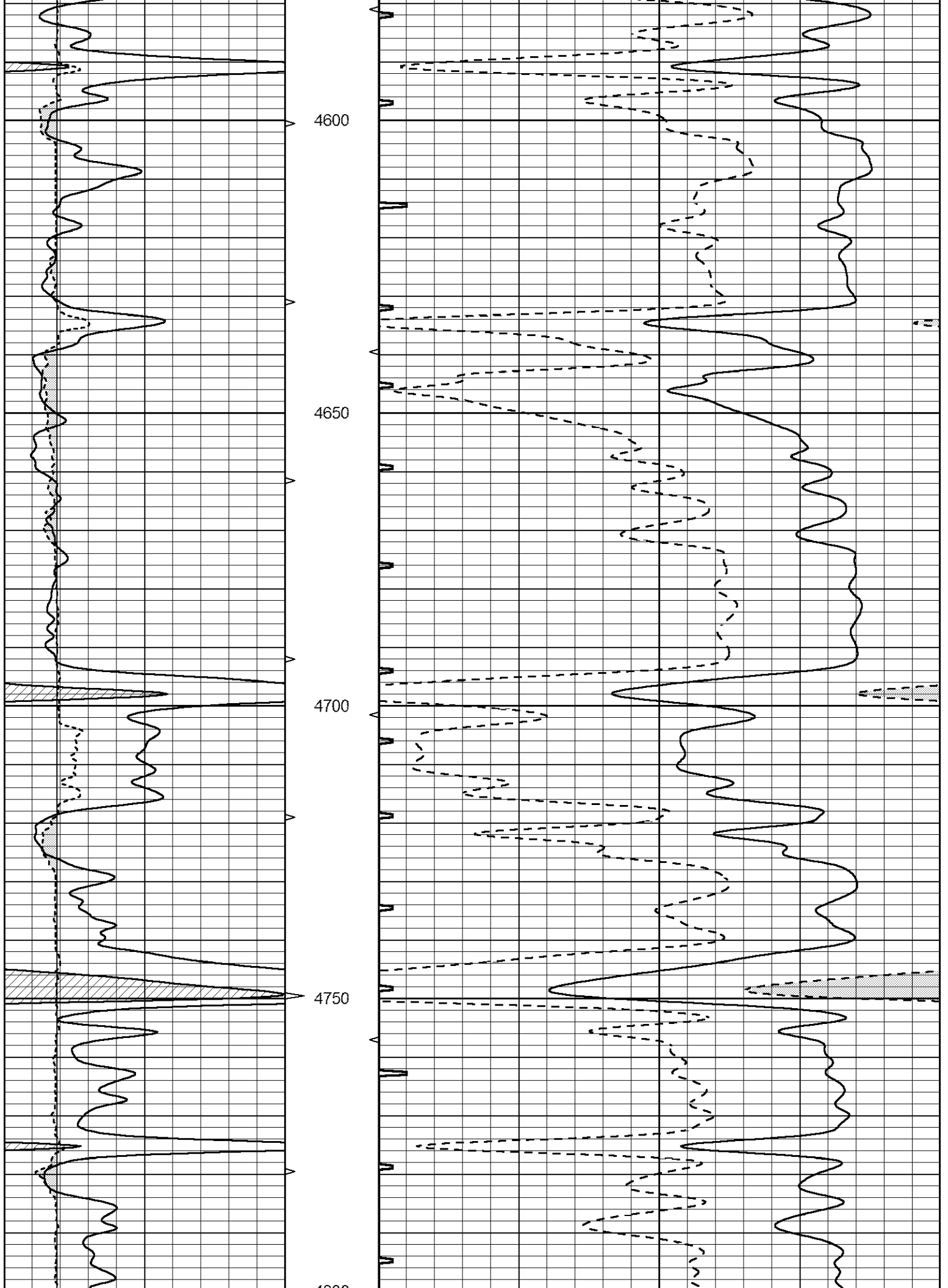
4400

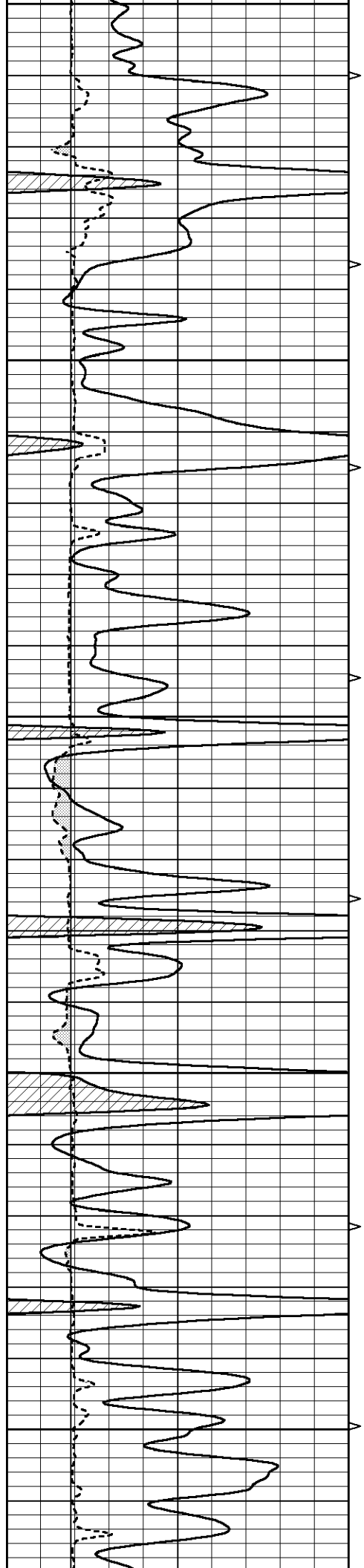
4450

4500

4550







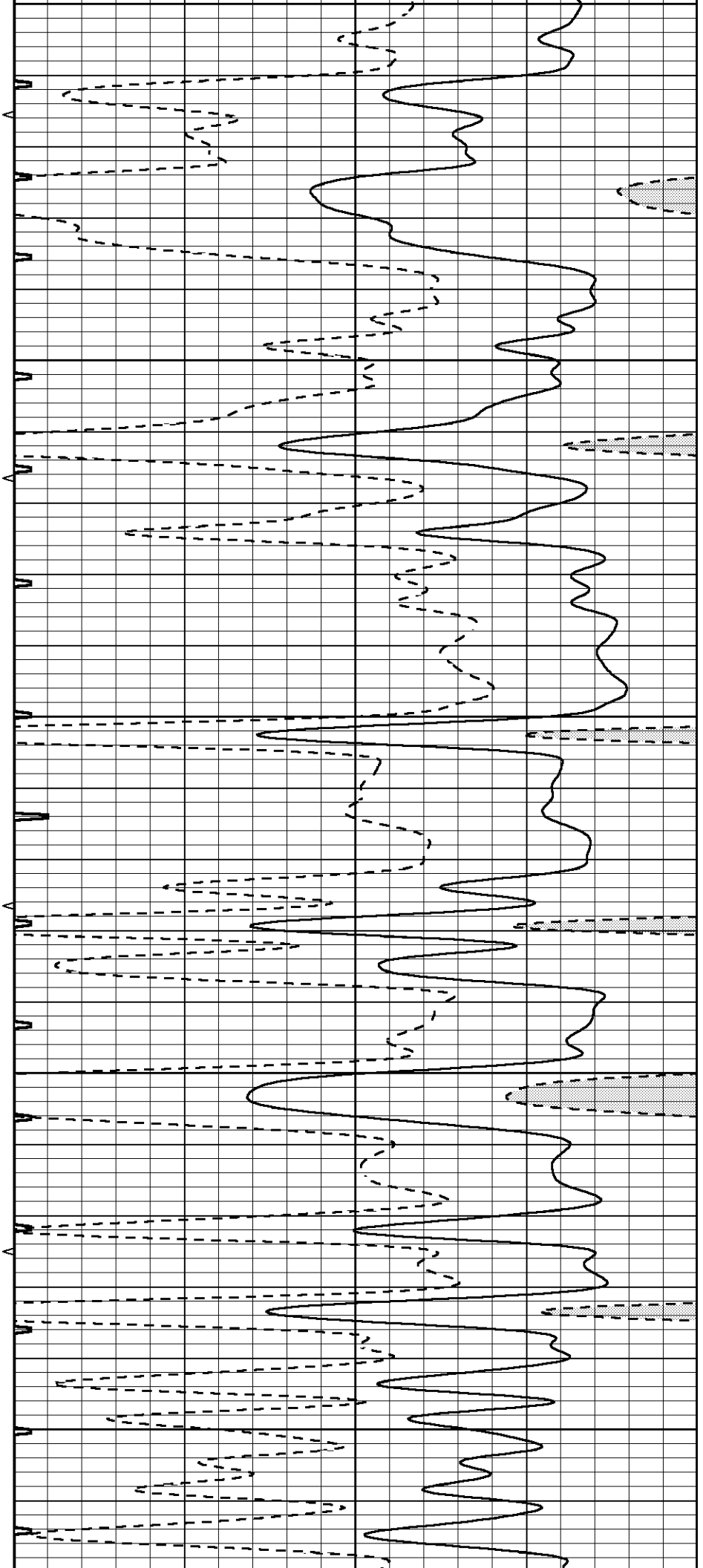
4800

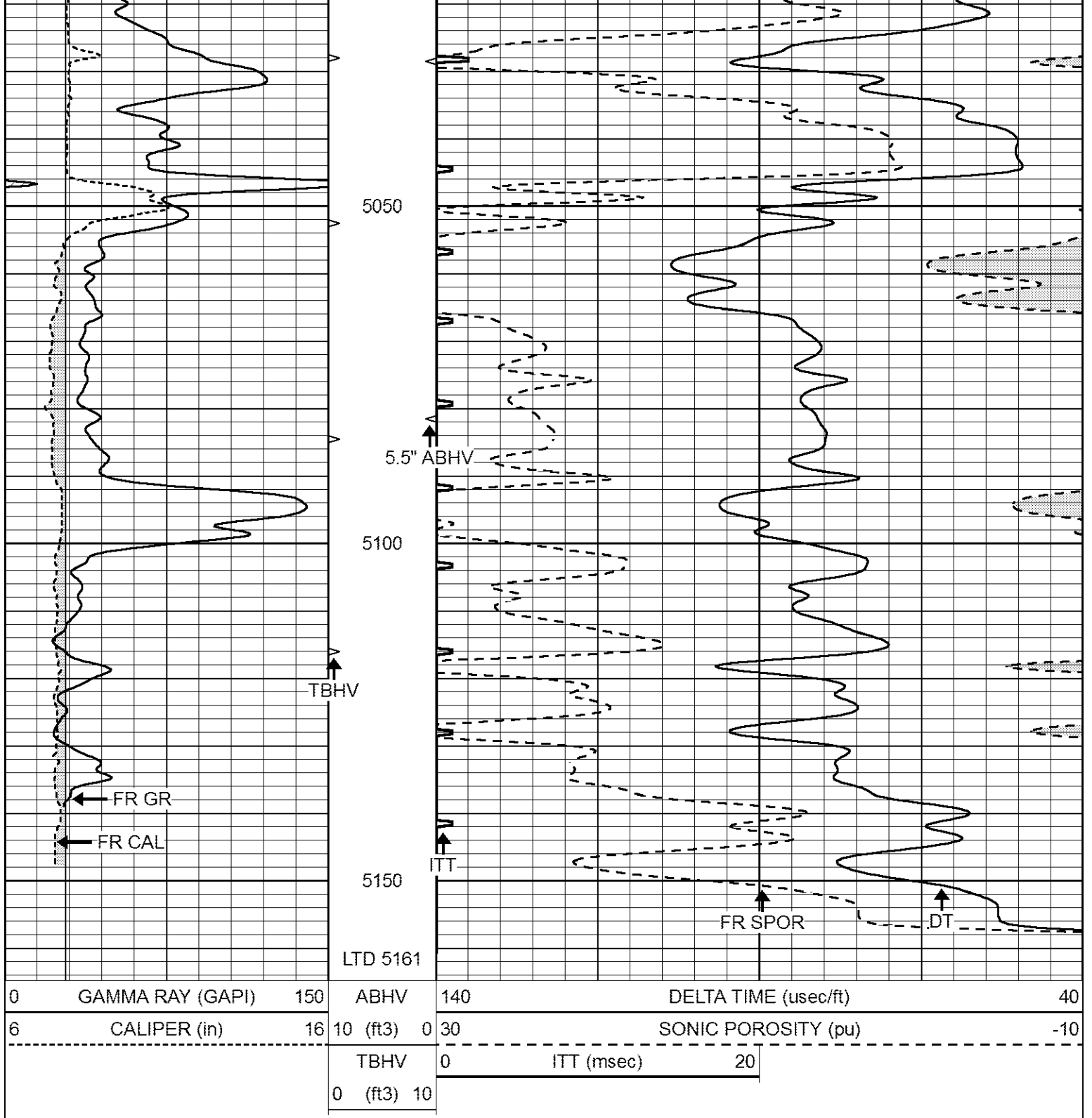
4850

4900

4950

5000





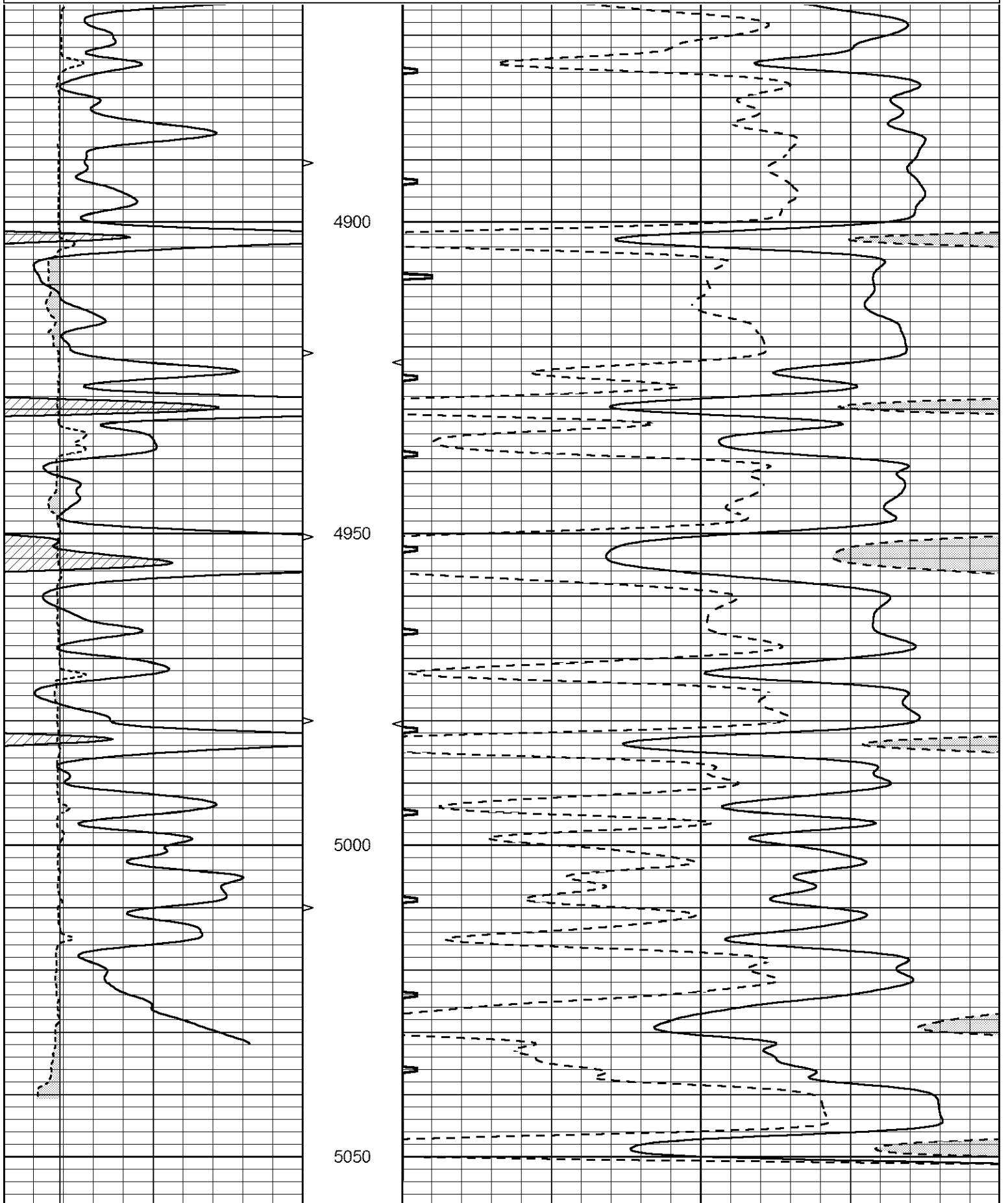
REPEAT SECTION

Database File 7701pe.db
 Dataset Pathname pass8R
 Presentation Format _sit
 Dataset Creation Thu Jul 06 01:09:58 2023
 Charted by Depth in Feet scaled 1:240

0	GAMMA RAY (GAPI)	150	ABHV	140	DELTA TIME (usec/ft)	40
6	CALIPER (in)	16	10 (ft3)	0 30	SONIC POROSITY (pu)	-10

TBHV
0 (ft3) 10

ITT (msec) 20



0 GAMMA RAY (GAPI) 150

ABHV

DELTA TIME (usec/ft)

140 40

6 CALIPER (in) 16

10 (ft3) 0

SONIC POROSITY (pu)

30 -10

TBHV

ITT (msec) 20

