



TRIPLE COMBO LOG

Company RITCHIE EXPLORATION, INC.

Well #1 DAVID TRUST 35

Field UNNAMED

County NORTON State KANSAS

Location: API #: 15-137-20767-0000

1301' FSL & 1871' FWL
N2 - SE - SW

SEC 35 TWP 5S RGE 24W

GROUND LEVEL Elevation 2463
KELLY BUSHING 9' A.G.L

Permanent Datum Log Measured From Drilling Measured From
KELLY BUSHING 9' A.G.L
KELLY BUSHING

Other Services
CDL/CNL
DIL/MEL/SON
Elevation
K.B. 2472
D.F. 2470
G.L. 2463

Date	8/10/23
Run Number	ONE
Depth Driller	4096
Depth Logger	4097
Bottom Logged Interval	4073
Top Log Interval	3300
Casing Driller	8 5/8" @ 221'
Casing Logger	221'
Bit Size	7 7/8
Type Fluid in Hole	CHEMICAL MUD
Density / Viscosity	9.2/58
PH / Fluid Loss	10.0/8.8
Source of Sample	FLOWLINE
Rm @ Meas. Temp	1.40 @ 87F
Rmt @ Meas. Temp	1.05 @ 87F
Rmc @ Meas. Temp	1.68 @ 87F
Source of Rmf / Rmc	MEASUREMENT
Rm @ BHT	1.04 @ 117F
Time Circulation Stopped	2 HOURS
Time Logger on Bottom	12:30 A.M.
Maximum Recorded Temperature	117F
Equipment Number	8916
Location	HAYS, KANSAS
Recorded By	COLE ROBBEN
Witnessed By	MAX LOVELY

<<< Fold Here >>>

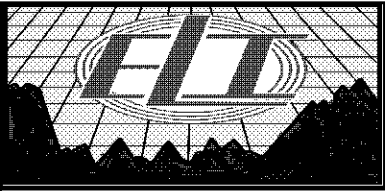
All interpretations are opinions based on inferences from electrical or other measurements and we cannot and do not guarantee the accuracy or correctness of any interpretation, and we shall not, except in the case of gross or willful negligence on our part, be liable or responsible for any loss, costs, damages, or expenses incurred or sustained by anyone resulting from any interpretation made by any of our officers, agents or employees. These interpretations are also subject to our general terms and conditions set out in our current Price Schedule.

Comments

THANK YOU FOR USING ELI WIRELINE SERVICES, HAYS, KS. (785) 628-6395

DIRECTIONS:

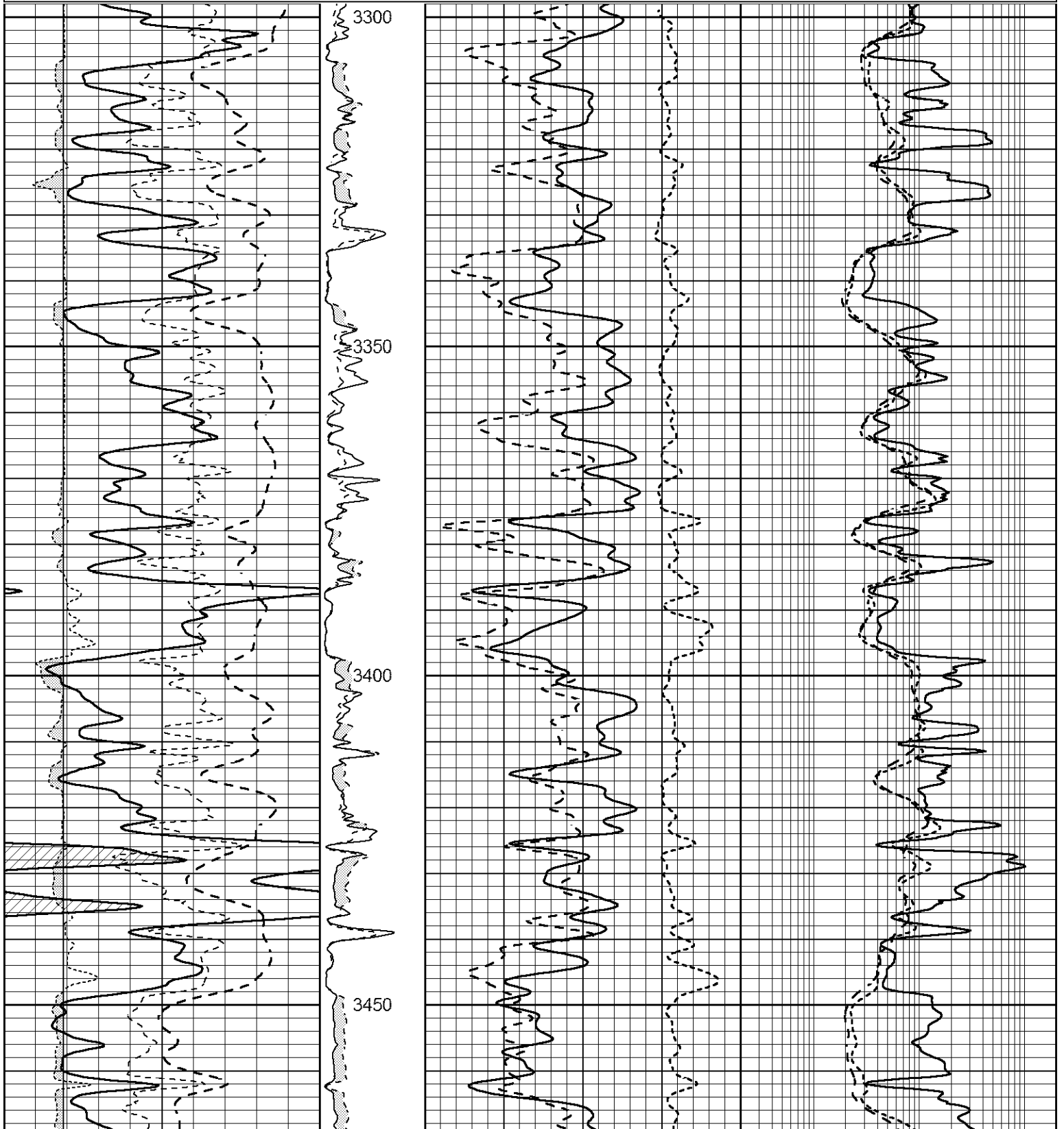
NORTH OF HILL CITY, KANSAS ON HWY 283 TO 'CC' ROAD, WEST TO 200TH AVENUE, NORTH 2 MILES TO 'EE' ROAD, WEST 1 1/4 MILES, NORTH INTO

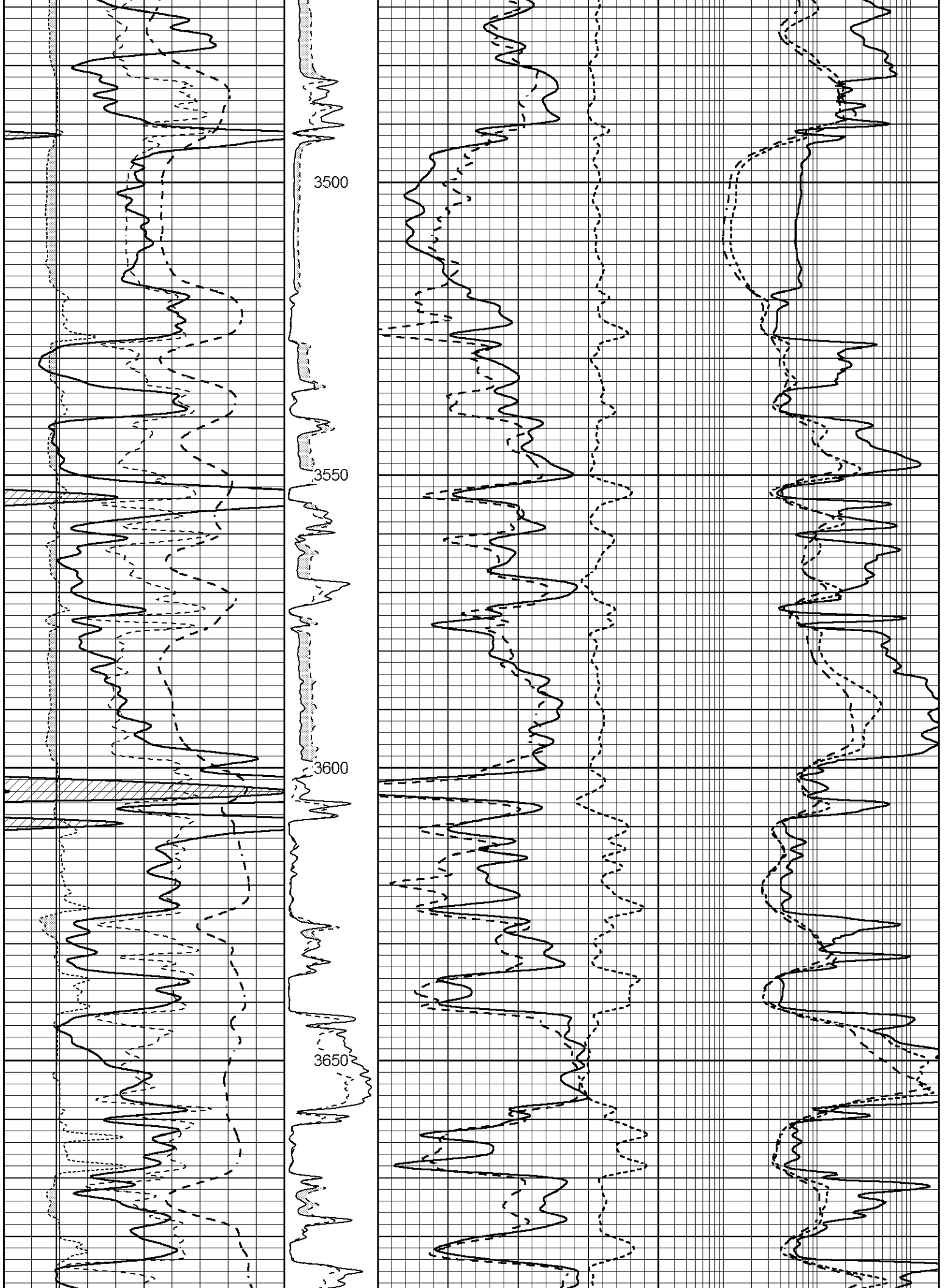


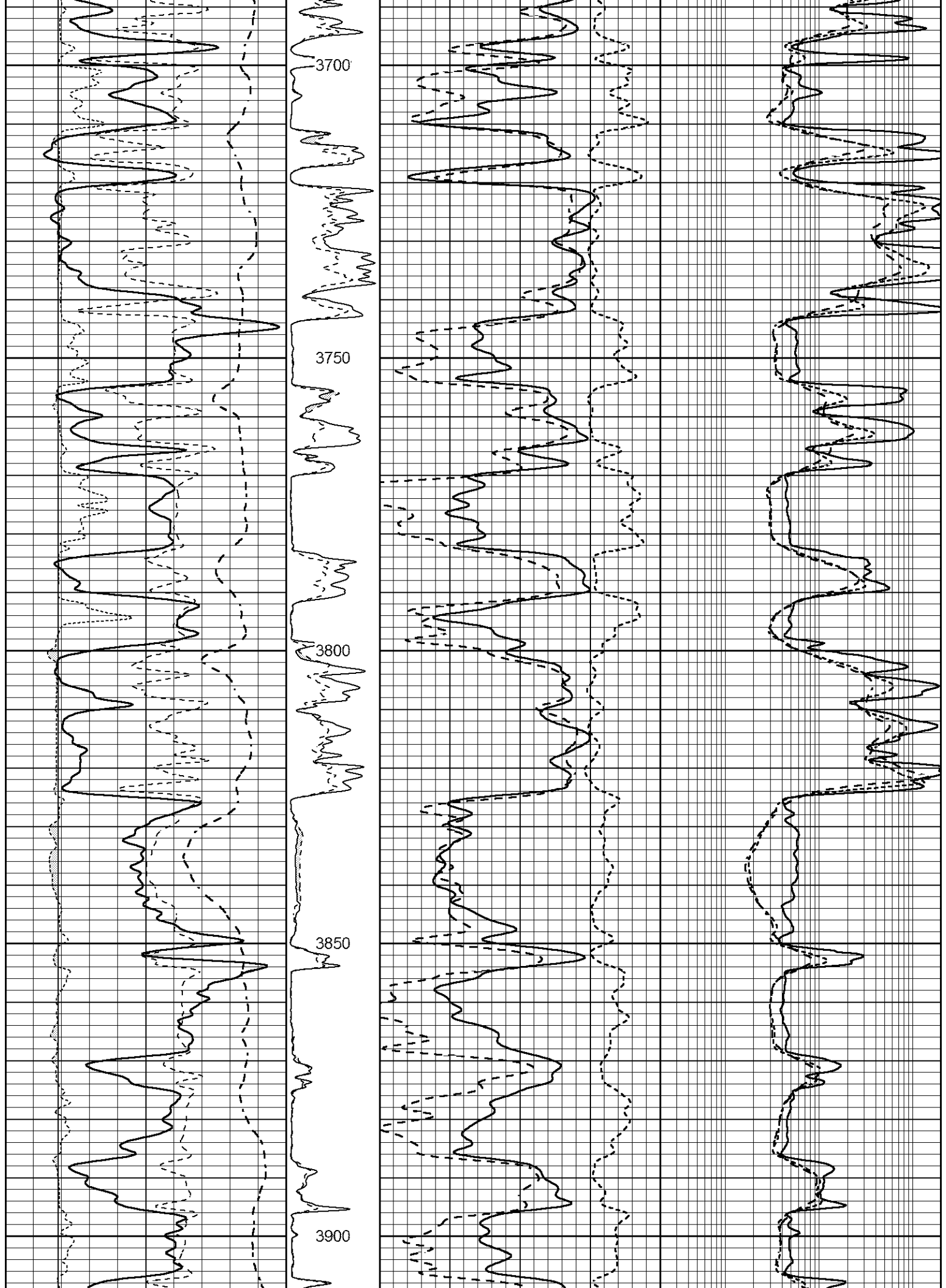
MAIN SECTION

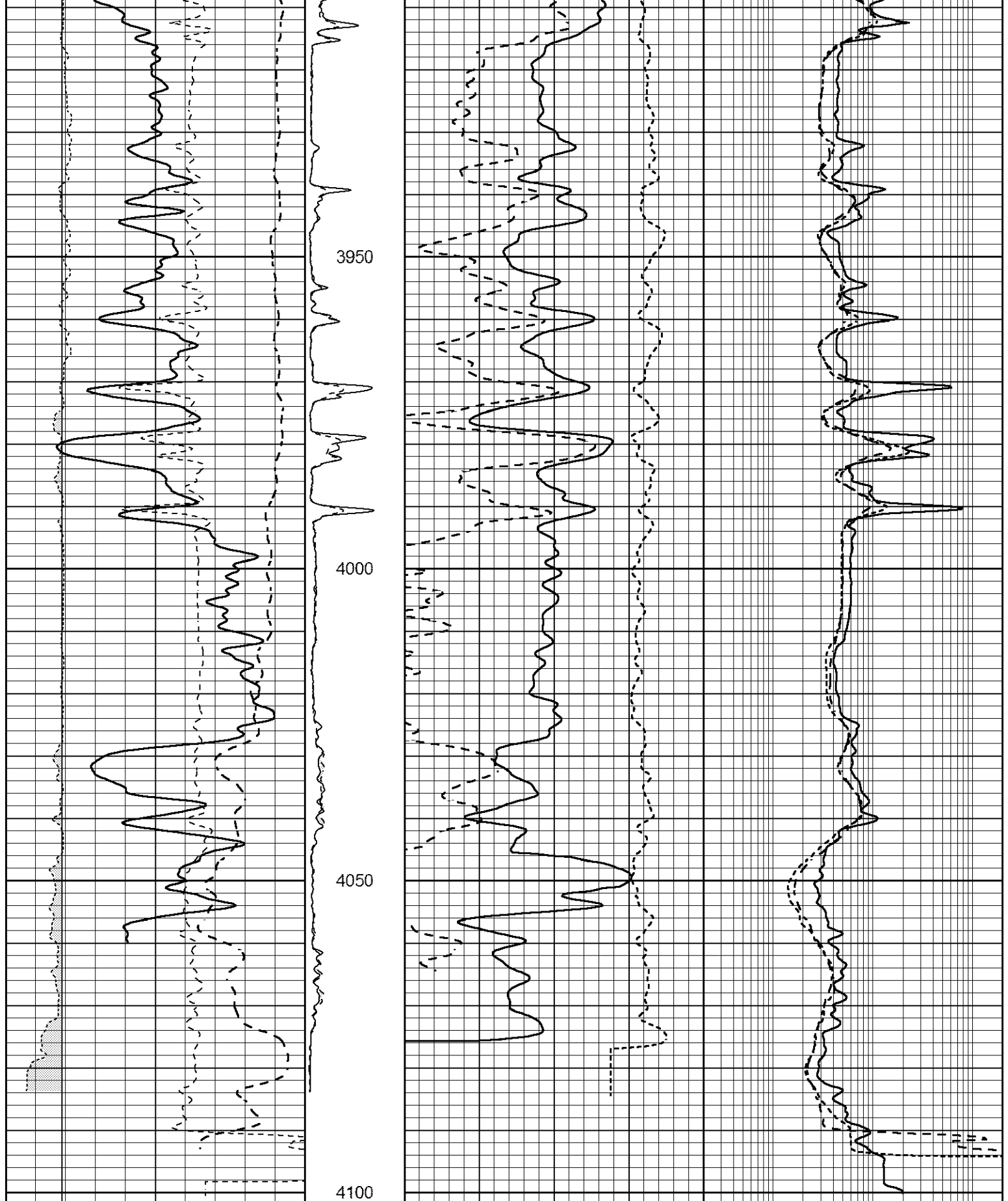
Database File 7711ddn.db
 Dataset Pathname pass3COM
 Presentation Format _ritchiecomp
 Dataset Creation Thu Aug 10 03:29:06 2023
 Charted by Depth in Feet scaled 1:240

0	Gamma Ray (GAPI)	150	MEL15	30	CN Porosity (pu)	-10	0.2	Deep Resistivity (Ohm-m)	200
-100	SP (mV)	100	(Ohm-m)	30	Density Porosity (pu)	-10	0.2	Medium Resistivity (Ohm-m)	200
-200	RxoRt	100	0	40	RHOC		0.2	Shallow Resistivity (Ohm-m)	200
6	MELCAL (in)	16	MEL20		-0.25 (g/cc) 0.25				
			(Ohm-m)						
			0	40					









0	Gamma Ray (GAPI)	150	MEL15	30	CN Porosity (pu)	-10	0.2	Deep Resistivity (Ohm-m)	200
-100	SP (mV)	100	(Ohm-m)	30	Density Porosity (pu)	-10	0.2	Medium Resistivity (Ohm-m)	200
-200	RxoRt	100	0	40	RHOC		0.2	Shallow Resistivity (Ohm-m)	200
6	MELCAL (in)	16	MEL20		-0.25 (g/cc)	0.25			
			(Ohm-m)						
			0	40					

