



DUAL RECEIVER CEMENT BOND LOG

Company	MAI OIL OPERATIONS, INC.	Country	USA
Well	RICHARDS #7 OWMO	State	KANSAS
Field	MENDOTA	County	ELLIS
Location	SEC 6 TWP 11S RGE 20W SW - SE - NW	Other Services	
Permanent Datum	GROUND LEVEL Elevation	Elevation	2066
Log Measured From	KELING BUSHING 9 A.S.L.	K.B. 2017	
Drilling Measured From	KELLY BUSHING	D.F. 2089	
		G.L. 2086	
Date	1-30-19		
Run Number	ONE		
Depth Driller	3896		
Bottom Logger	3720		
Bottom Logged Interval	3720		
Top Log Interval	2850		
Open Hole Size	7 7/8		
Type Fluid	WATER		
Density / Viscosity			
Max Recorded Temp.			
Estimated Cement Top	3852		
Time Well Ready			
Equipment Number	3382		
Recorded By	HAYS, KS		
Missed By	JEREMY SEIB		
Run Number	0		
Bit	260		
Size	3696		
Weight			
From			
To			
TVSO	7 7/8		
Size	8 9/8		
WVRF			
Top	0		
Bottom	260		
Production String			
Production String	5 1/2		

<<< Fold Here >>>

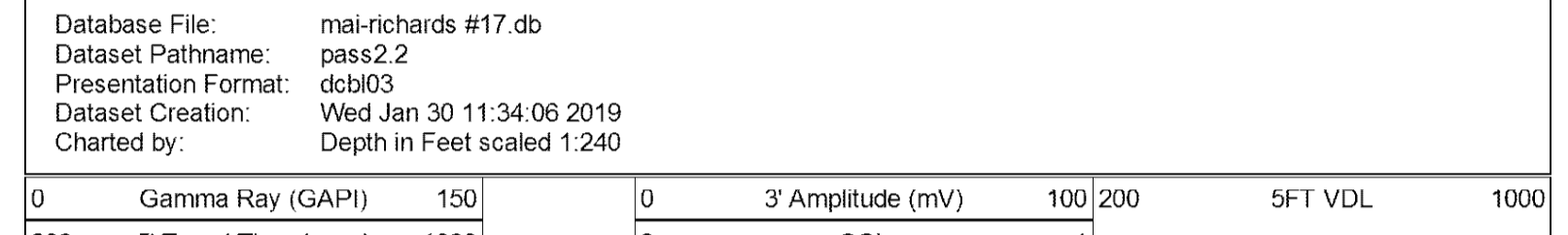
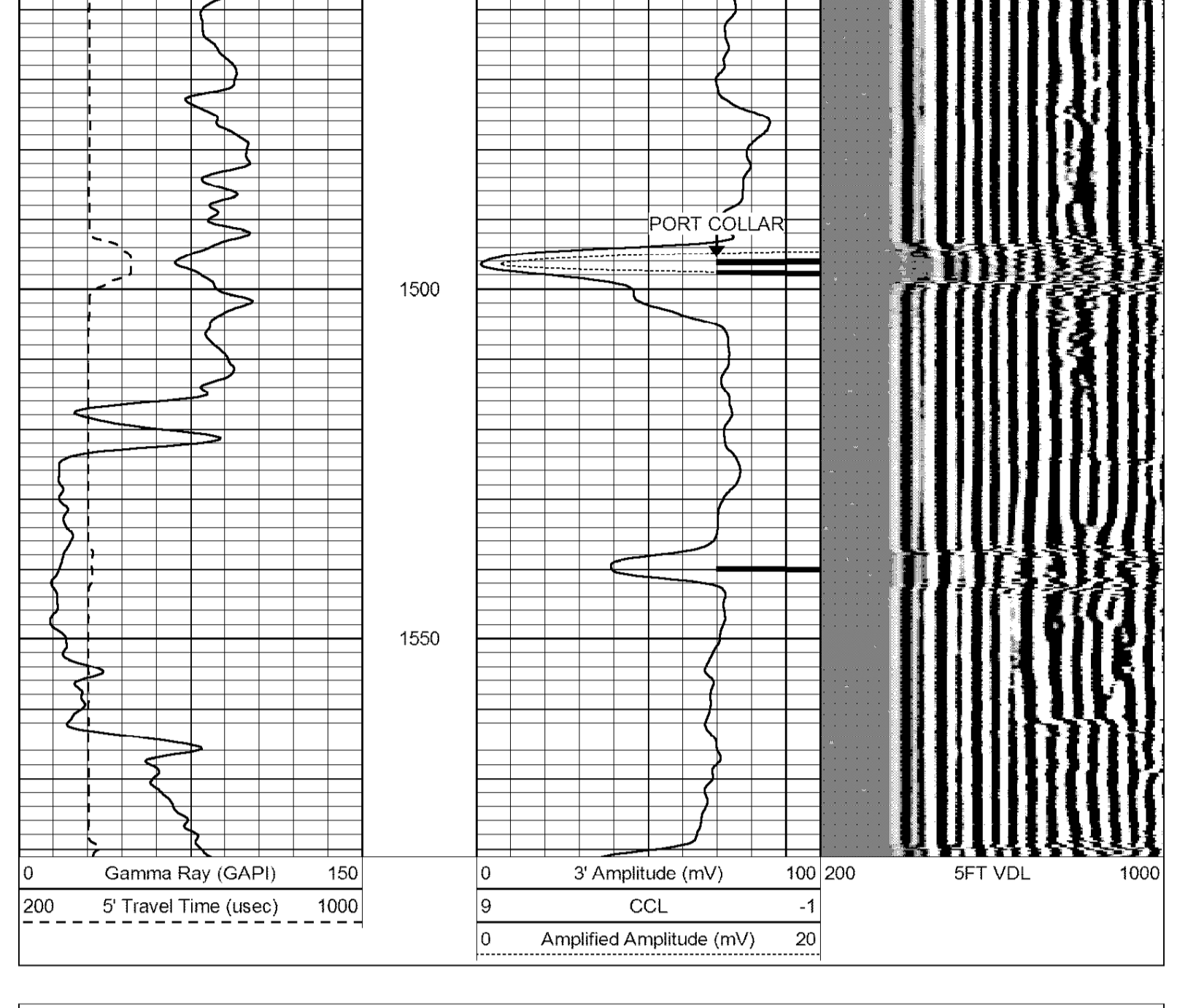
All interpretations are opinions based on inferences from electrical or other measurements and we cannot and do not guarantee the accuracy or correctness of any interpretation, and we shall not, except in the case of gross or willful negligence on our part, be liable or responsible for any loss, costs, damages, or expenses incurred or sustained by anyone resulting from any interpretation made by any of our officers, agents or employees. These interpretations are also subject to our general terms and conditions set out in our current Price Schedule.

Comments

THANK YOU FOR USING ELI WIRELINE SERVICES, HAYS, KS (785) 628-6395
 DIRECTIONS: ELLIS, KS - NORTH TO COUNTY LINE - 3 MILES WEST FROM CURVE TO RD. 100TH - 1 MILE SOUTH TO MENDOTA RD. - EAST & NORTH INTO

PORT COLLAR

Database File: mai-richards #17.db
 Dataset Pathname: pass3
 Presentation Format: dcb102
 Dataset Creation: Wed Jan 30 11:41:32 2019
 Charted by: Depth in Feet scaled 1:240



Database File: mai-richards #17.db
 Dataset Pathname: pass2.2
 Presentation Format: dcb103
 Dataset Creation: Wed Jan 30 11:34:06 2019
 Charted by: Depth in Feet scaled 1:240

