

**GAMMA RAY  
CCL  
NEUTRON LOG**

Company MAI OIL OPERATIONS, INC.  
Well RICHARDS #7 OWMO  
Field MENDOTA  
County ELLIS  
State KANSAS

Country USA  
Company MAI OIL OPERATIONS, INC.  
Well RICHARDS #7 OWMO  
Field MENDOTA  
County ELLIS  
State KANSAS

Location: SW - SE - NW  
API #: 15-051-25045-0000  
Other Services

SEC 6 TWP 11S RGE 20W  
Permanent Datum GROUND LEVEL Elevation 2066  
Log Measured From KELING BUSHING 9' A.S.L.  
Drilling Measured From KELLY BUSHING  
Elevation K.B. 2071  
D.F. 2069  
G.L. 2066

Date 1-30-19  
Run Number ONE  
Depth Driller 3896  
Bottom Logger 3720  
Bottom Logged Interval 3720  
Top Log Interval 2950  
Open Hole Size 7 7/8  
WATER

Type Fluid  
Density / Viscosity  
Max Recorded Temp.  
Estimated Cement Top 3852

Time Well Ready  
Equipment on Bottom  
Equipment Number  
Recorded By HAYS, AS  
Reviewed By JEREMY SEAB  
Witnessed By ALLEN BANGERT

Boresite Record  
Run Number Bit From To Size Weight From To  
ONE 0 260 3696  
TWO 7 7/8 260 3696

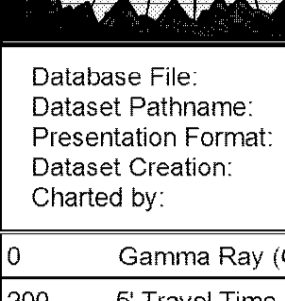
Casing Record  
Surface String Size 8 9/8 WAWFI Top 0 Bottom 260  
Prod. String  
Production String Size 5 1/2

<<< Fold Here >>>

All interpretations are opinions based on inferences from electrical or other measurements and we cannot and do not guarantee the accuracy or correctness of any interpretation, and we shall not, except in the case of gross or willful negligence on our part, be liable or responsible for any loss, costs, damages, or expenses incurred or sustained by anyone resulting from any interpretation made by any of our officers, agents or employees. These interpretations are also subject to our general terms and conditions set out in our current Price Schedule.

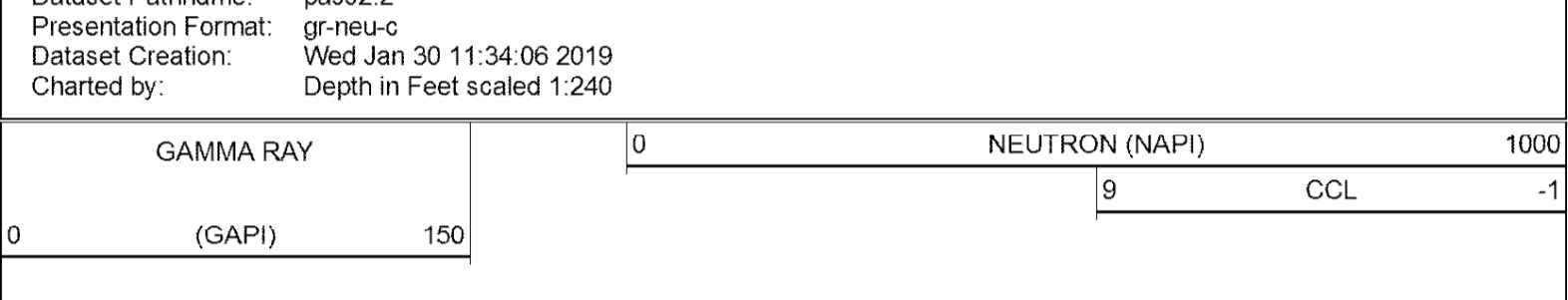
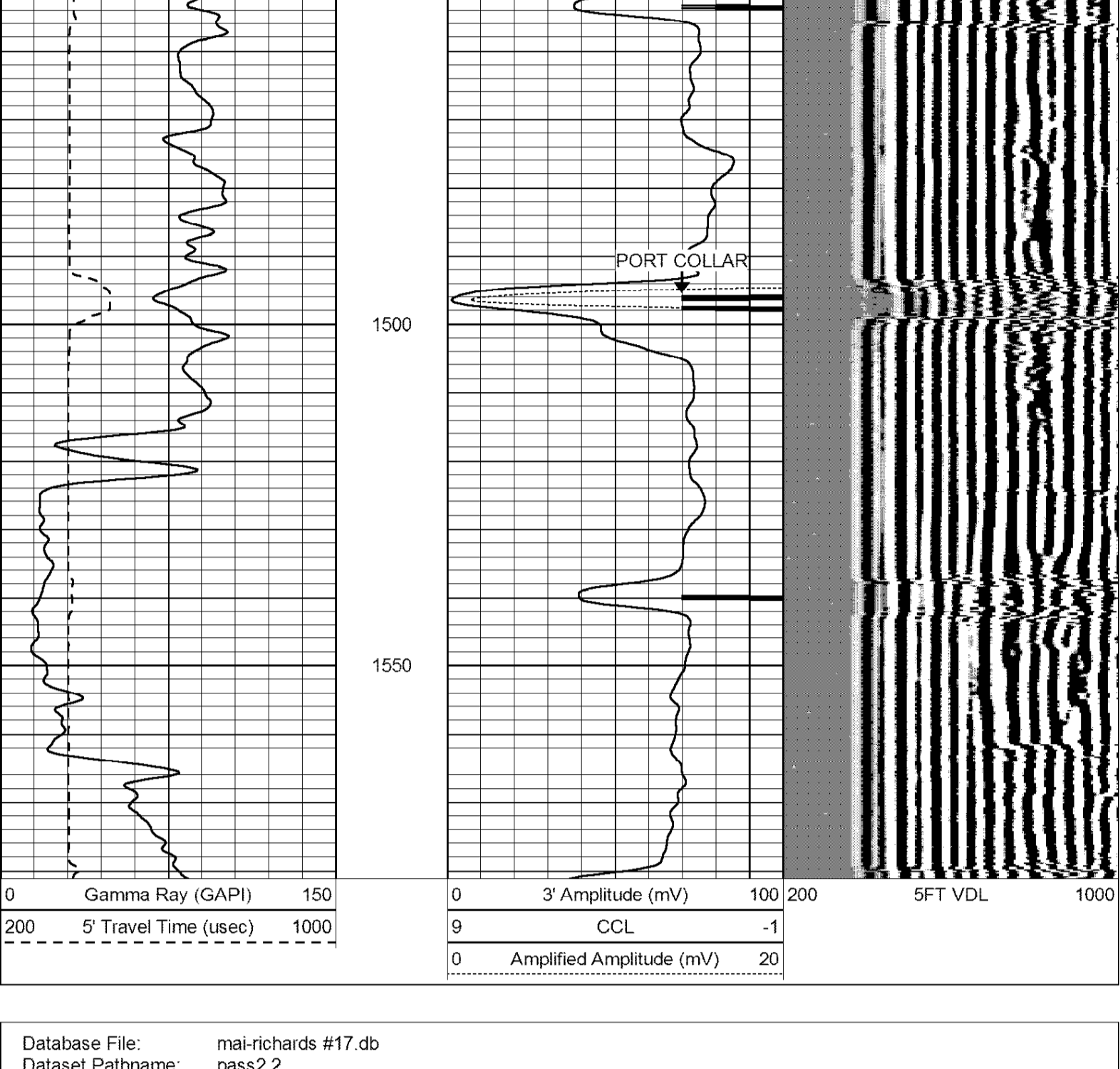
**Comments**

THANK YOU FOR USING ELI WIRELINE SERVICES, HAYS, KS (785) 628-6395  
DIRECTIONS: ELLIS, KS - NORTH TO COUNTY LINE - 3 MILES WEST FROM CURVE TO RD. 100TH - 1 MILE SOUTH TO MENDOTA RD. - EAST & NORTH INTO



**PORT COLLAR**

Database File: mai-richards #17.db  
Dataset Pathname: pass3  
Presentation Format: dcb102  
Dataset Creation: Wed Jan 30 11:41:32 2019  
Charted by: Depth in Feet scaled 1:240



Database File: mai-richards #17.db  
Dataset Pathname: pass2.2  
Presentation Format: gr-neu-c  
Dataset Creation: Wed Jan 30 11:34:06 2019  
Charted by: Depth in Feet scaled 1:240

