



Gamma Ray Ccl/Neutron Log

Company		McFadden Oil Co.	
Well		Sutherland # 11	
Field		Iola	
County		Allen	
State		Kansas	
Location:		API #: 15-001-31140	
Other Services			
SEC 2		TWP 24S. RGE 18E	
465' FSL & 4425' FEL		NW SE SW SW	
Permanent Datum		Elevation 993' est	
Log Measured From		K.B. ---	
Ground Level		G.L. 999' est	
Drilling Measured From		G.L. 999' est	
Date		5Aug14	
Run Number		One	
Depth Driller		922'	
Bottom Logger		922'	
Top Log Interval		Surface	
Bottom Log Interval		921'	
Open Hole Size		6.34"	
Rate of Penetration		N/A	
Drilling Fluid Viscosity		N/A	
Max. Recorded Temp.		N/A	
Estimated Cement Top		N/A	
Time Well Ready		Upon Arrival	
Equipment Number		OW4	
Location		Oklahoma	
Recorded By		Hornby	
Witnessed By		Mr. McFadden	
Run Number		Borehole Record	
From		To	
Borehole Record		Tubing Record	
From		From	
To		To	
Casing Record		Size	
Surface String		4.5"	
Production String		Surface	
Liner		T.D.	

<<< Fold Here >>>

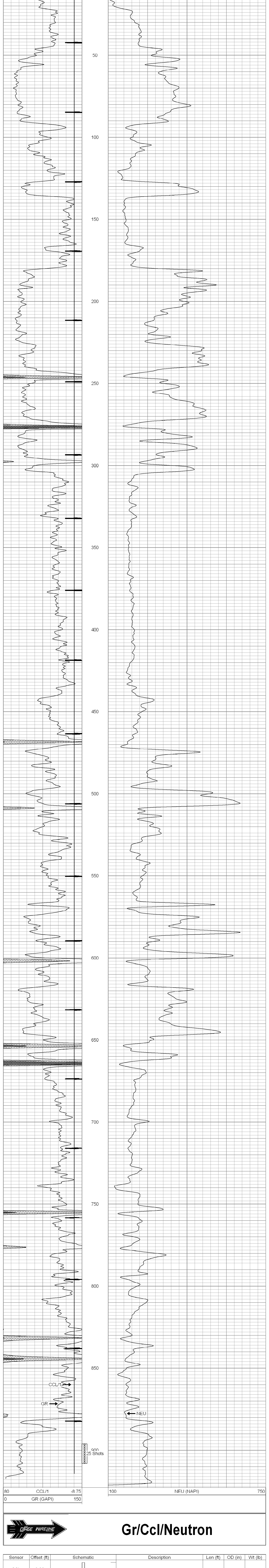
All interpretations are opinions based on inferences from electrical or other measurements and we cannot and do not guarantee the accuracy or correctness of any interpretation, and we shall not, except in the case of gross or willful negligence on our part, be liable or responsible for any loss, costs, damages, or expenses incurred or sustained by anyone resulting from any interpretation made by any of our officers, agents or employees. These interpretations are also subject to our general terms and conditions set out in our current Price Schedule.

Comments

File #OW4-3491grn
Thank You for using Osage Wireline!!

Crew: Schonfield, Vanwinkle

80	CCL/1	-8.75	100	NEU (NAPI)	750
0	GR (GAPI)	150			



80	CCL/1	-8.75	100	NEU (NAPI)	750
0	GR (GAPI)	150			

Gr/Ccl/Neutron

Sensor	Offset (ft)	Schematic	Description	Len (ft)	OD (in)	Wt (lb)
CCL	8.38		GR_CCL-PRBSIXPINOLDSTYLE (98120:4.78			
GR	7.04		PROBE 2 3/4" GR/CCL OLD STYLE SIX		2.75	57.00
			PIN(RUN W/NEUTRON)			
NEU	1.33		neu-probe (971003)	4.50	2.75	

Dataset: ow4-3491grn mcFadden sutherland 11.db: field/well/run/1/pass1
 Total Length: 9.28 ft
 Total Weight: 57.00 lb
 O.D.: 2.75 in