



DUAL INDUCTION
LL3/GR LOG

Company COLT ENERGY, INC.
Well FITZPATRICK # FL-1
Field IOLA
County ALLEN
State KANSAS

Company COLT ENERGY, INC.
Well FITZPATRICK # FL-1
Field IOLA
County ALLEN State KANSAS

Location: API #: 15-001-31326-0000
NE NE NW SW
2475' FSL & 1155' FWL
SEC 9 TWP 24S RGE 18E
Permanent Datum GL Elevation 1022'
Log Measured From GL
Drilling Measured From GL
Other Services
CDL/SWN
Elevation
K.B. ---
D.F. ---
G.L. 1022'

Date	12-09-2014
Run Number	ONE
Depth Driller	1137'
Depth Logger	1133'
Bottom Logged Interval	1131'
Top Log Interval	SURFACE
Casing Driller	8 5/8" @ 42.5'
Casing Logger	8 5/8" @ 42.5'
Bit Size	6 3/4"
Type Fluid in Hole	WATER/MUD
Density / Viscosity	
pH / Fluid Loss	
Source of Sample	
Rm @ Meas. Temp	
Rmf @ Meas. Temp	
Rmc @ Meas. Temp	
Source of Rmf / Rmc	
Rm @ BHT	
Time Circulation Stopped	
Time Logger on Bottom	
Maximum Recorded Temperature	
Equipment Number	OW2
Location	HOMINY, OK
Recorded By	LOWERY
Witnessed By	MS. BALLARD

<<< Fold Here >>>

All interpretations are opinions based on inferences from electrical or other measurements and we cannot and do not guarantee the accuracy or correctness of any interpretation, and we shall not, except in the case of gross or willful negligence on our part, be liable or responsible for any loss, costs, damages, or expenses incurred or sustained by anyone resulting from any interpretation made by any of our officers, agents or employees. These interpretations are also subject to our general terms and conditions set out in our current Price Schedule.

Comments

OW2-8779
CREW : SHAMBLES

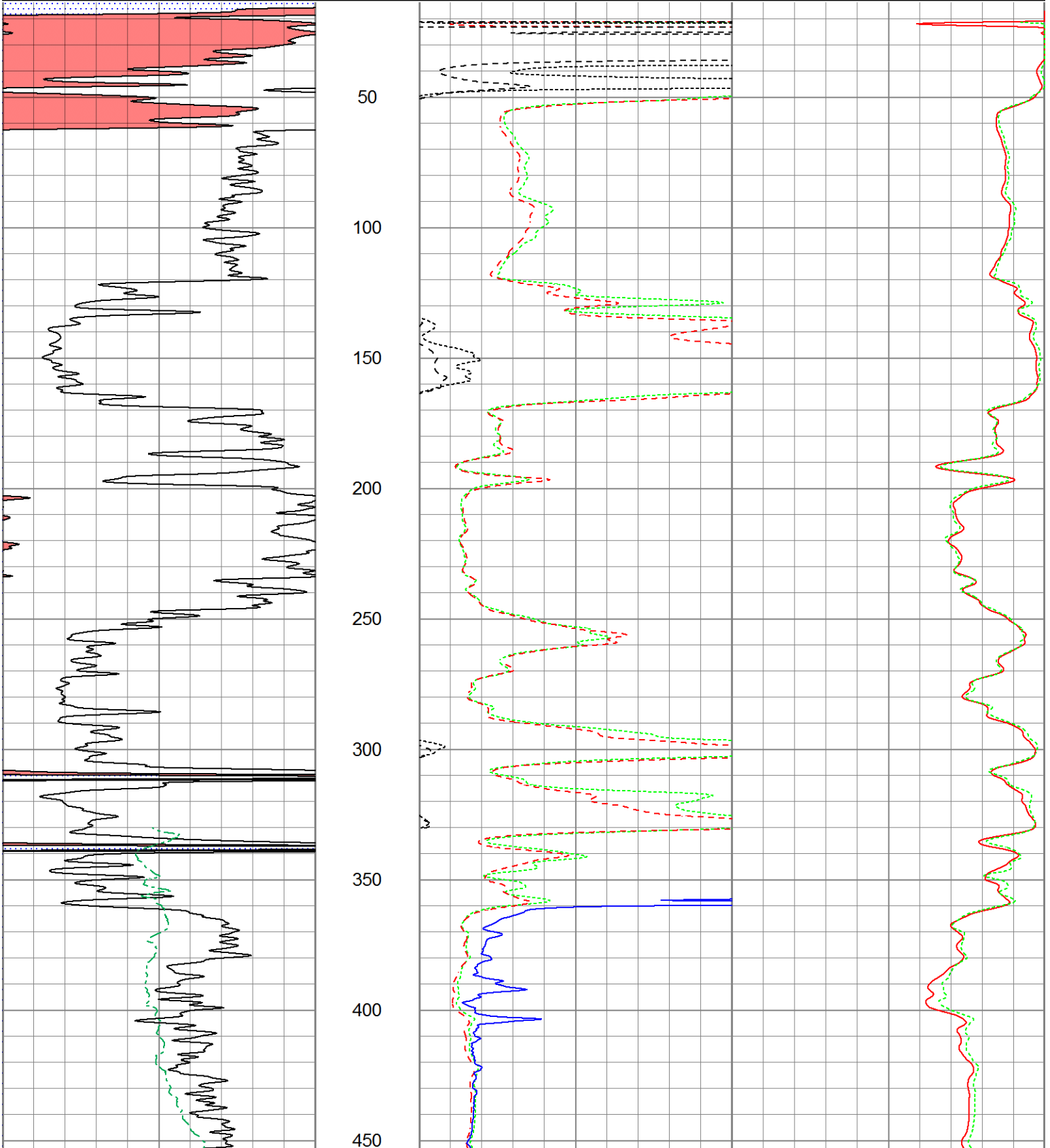


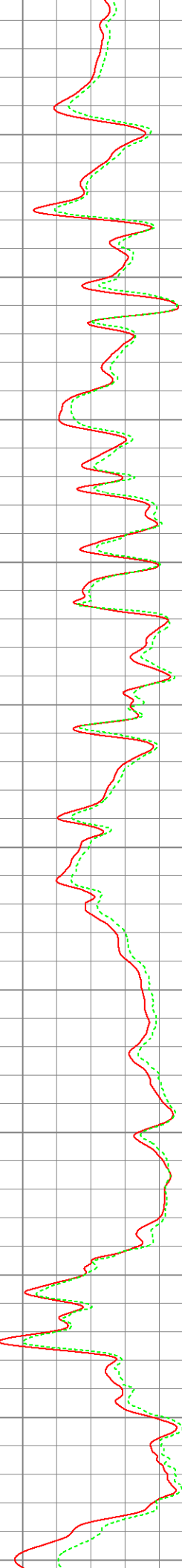
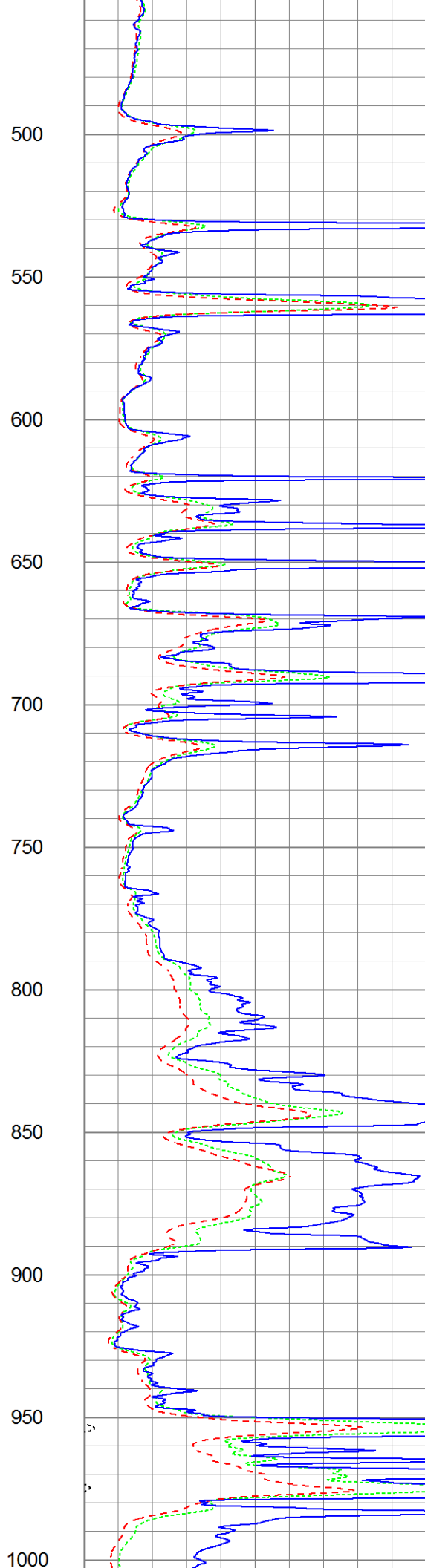
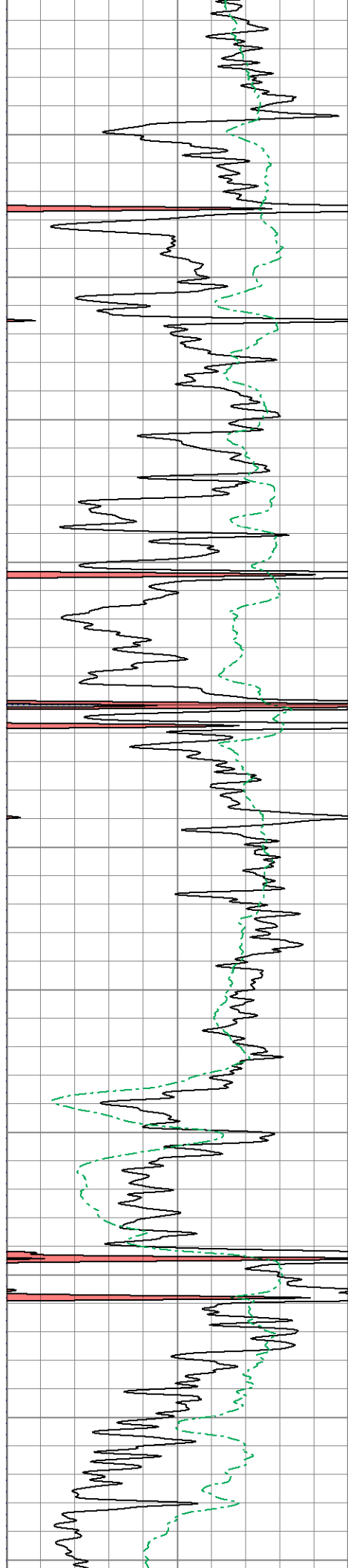
2" DIL SECTION

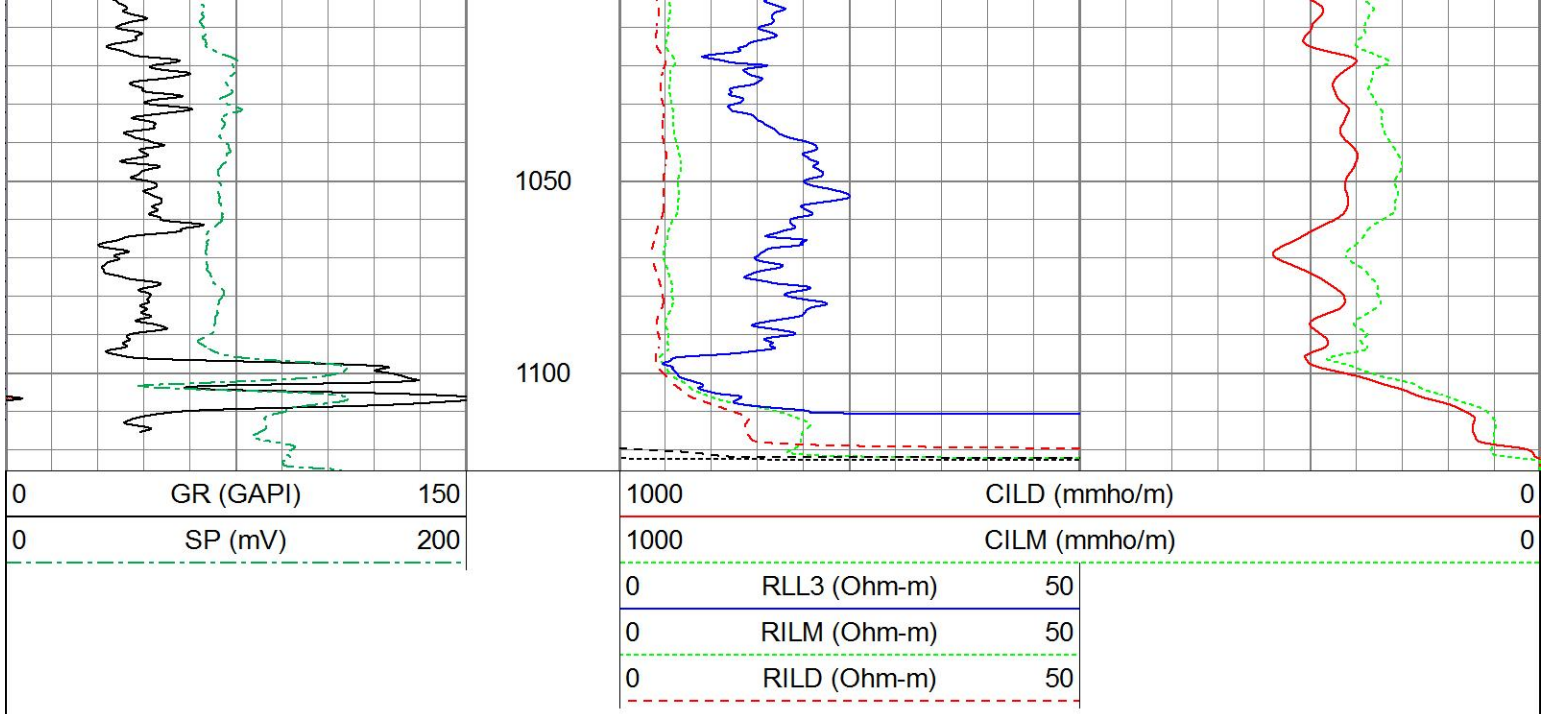
Database File ow2-8779 colt energy.db
 Dataset Pathname DIL/pass4.10
 Presentation Format dil2mdcol
 Dataset Creation Tue Dec 09 19:36:05 2014
 Charted by Depth in Feet scaled 1:600

0 GR (GAPI) 150
 0 SP (mV) 200

1000 CILD (mmho/m) 0
 1000 CILM (mmho/m) 0
 0 RLL3 (Ohm-m) 50
 0 RILM (Ohm-m) 50
 0 RILD (Ohm-m) 50



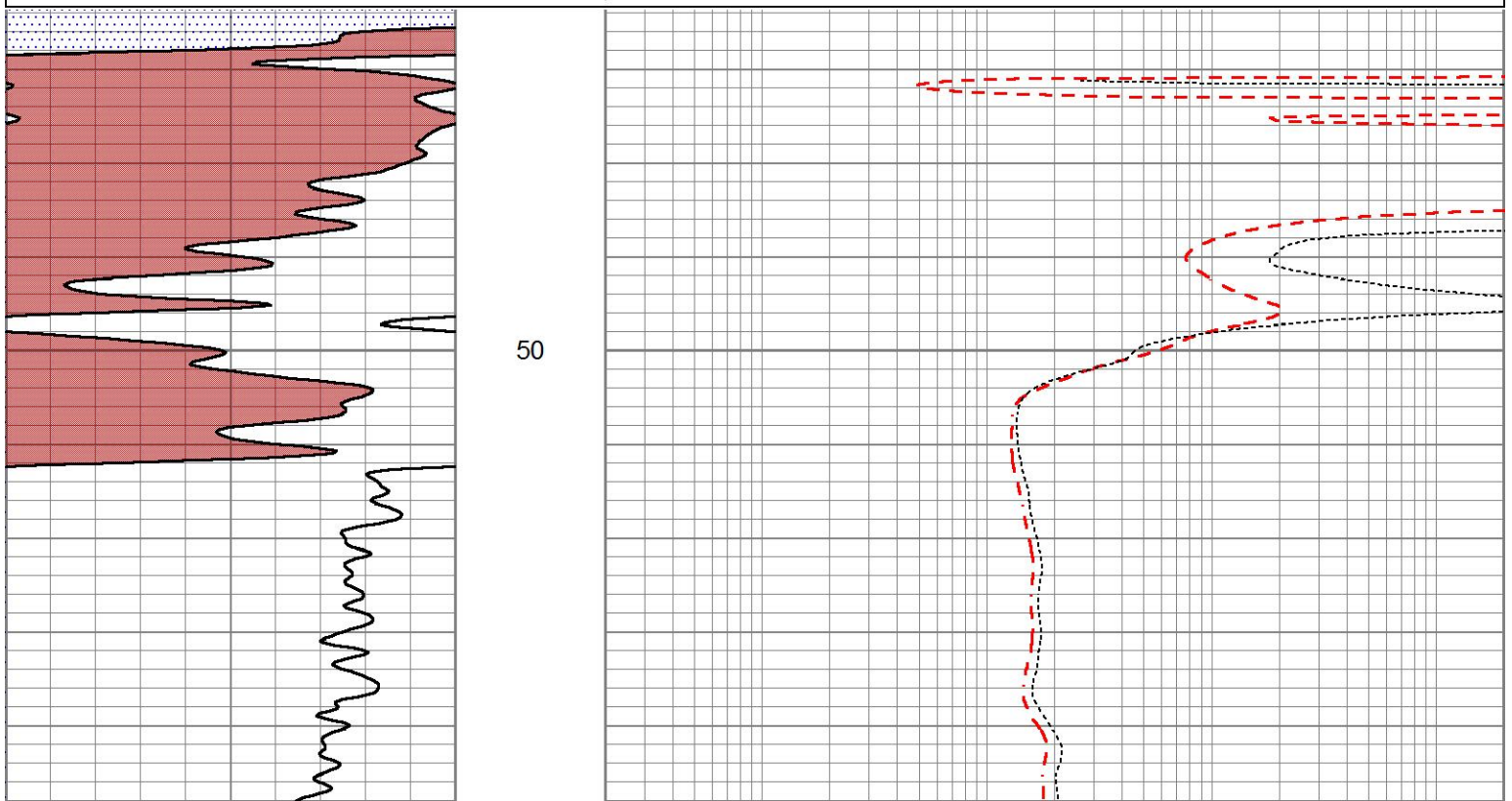


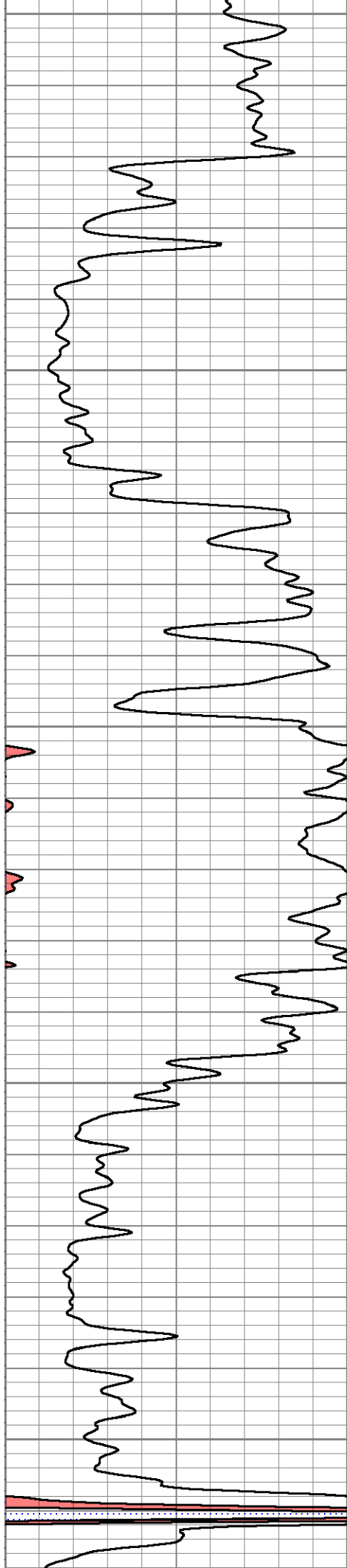


5" DIL SECTION

Database File ow2-8779 colt energy.db
 Dataset Pathname DIL/pass4.8
 Presentation Format dil5air
 Dataset Creation Tue Dec 09 19:34:59 2014
 Charted by Depth in Feet scaled 1:240

0	GR (GAPI)	150	0.2	RILD (Ohm-m)	2000
			0.2	RLL3 (Ohm-m)	2000
			0.2	RILM (Ohm-m)	2000





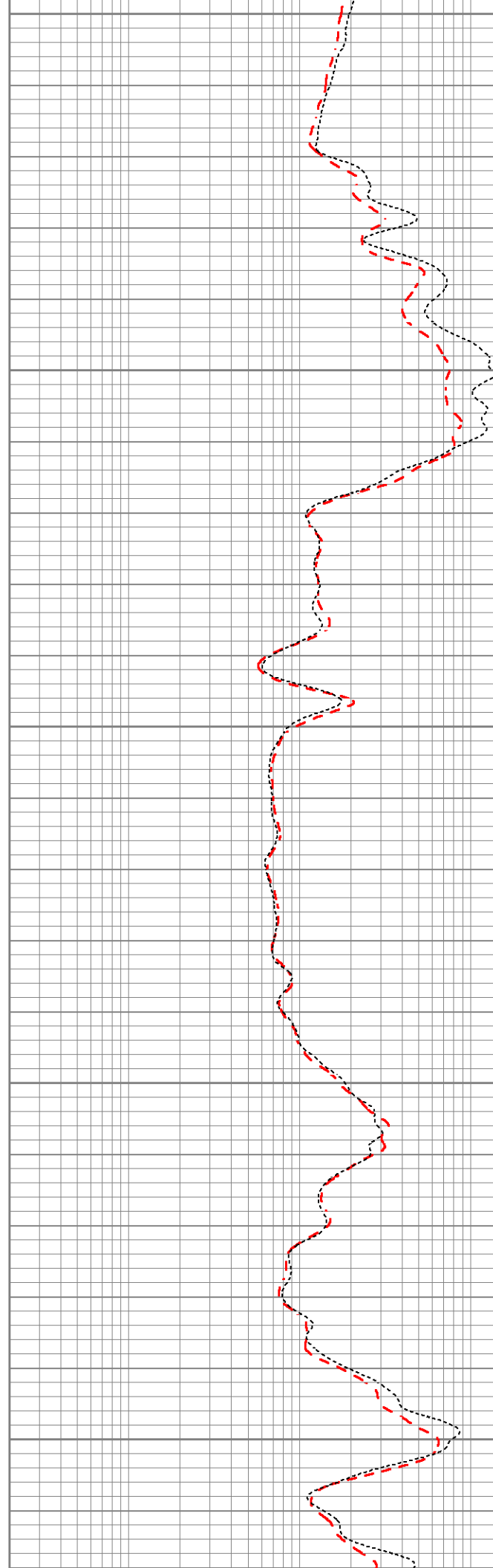
100

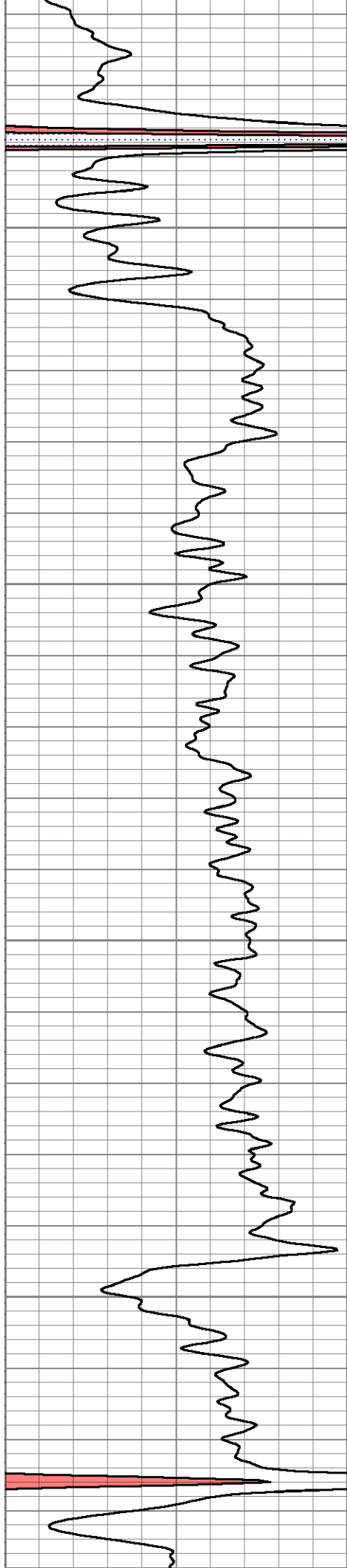
150

200

250

300



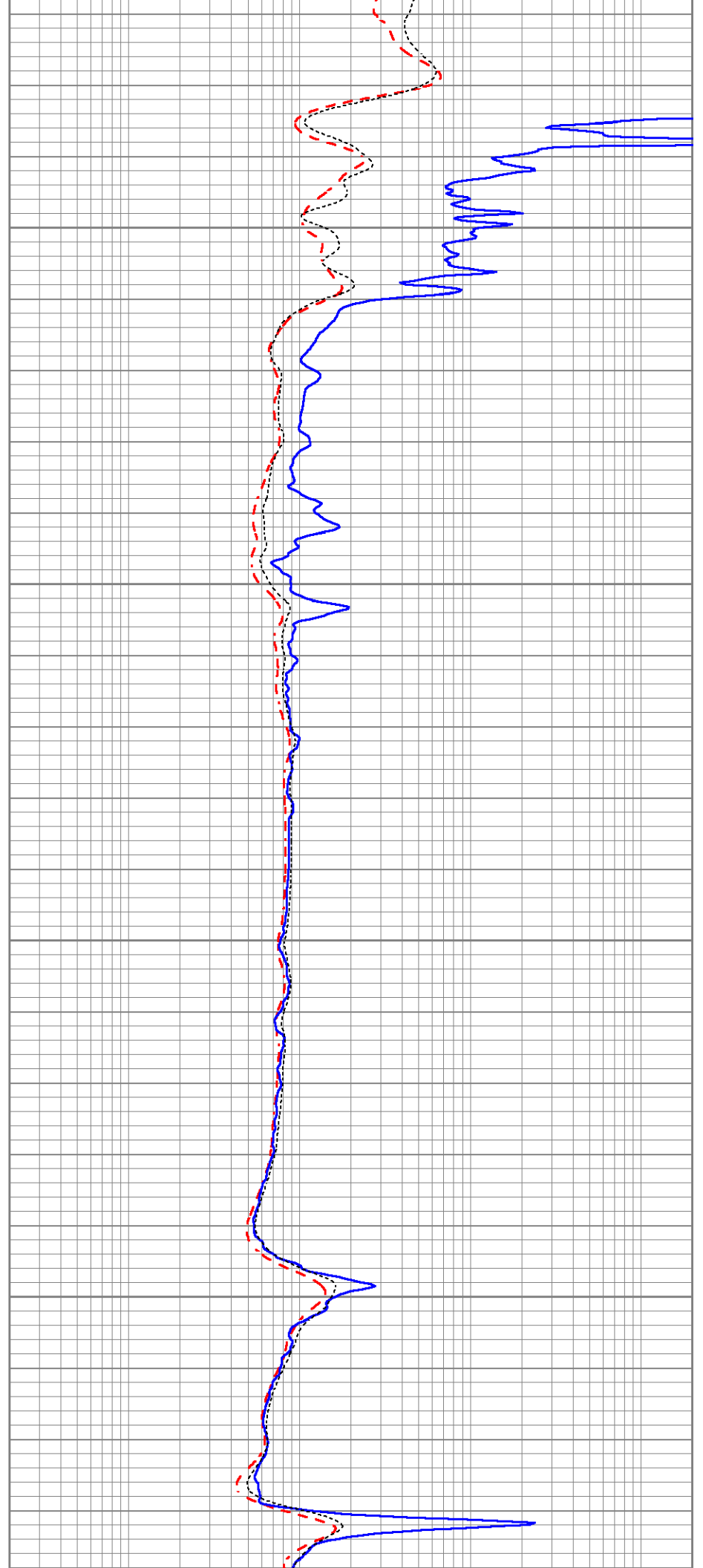


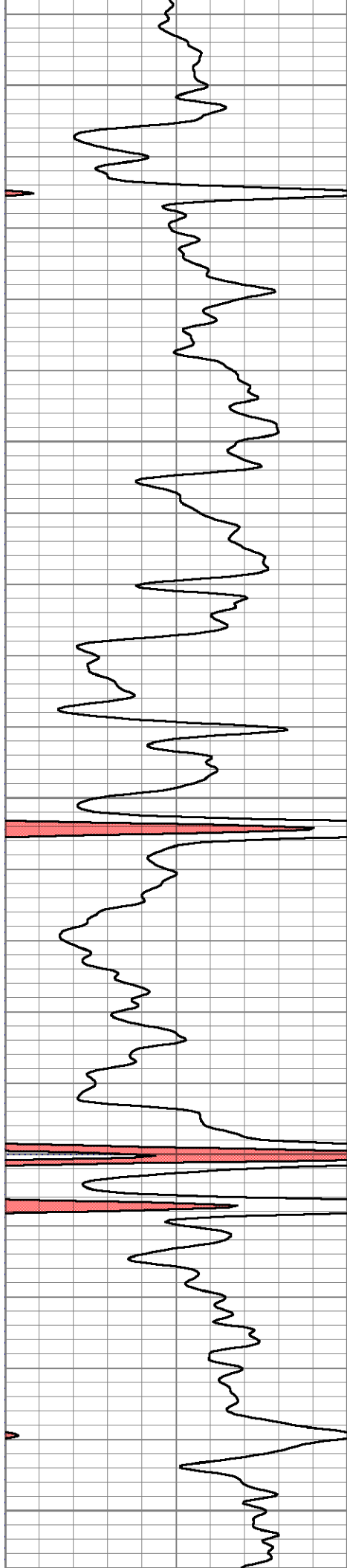
350

400

450

500





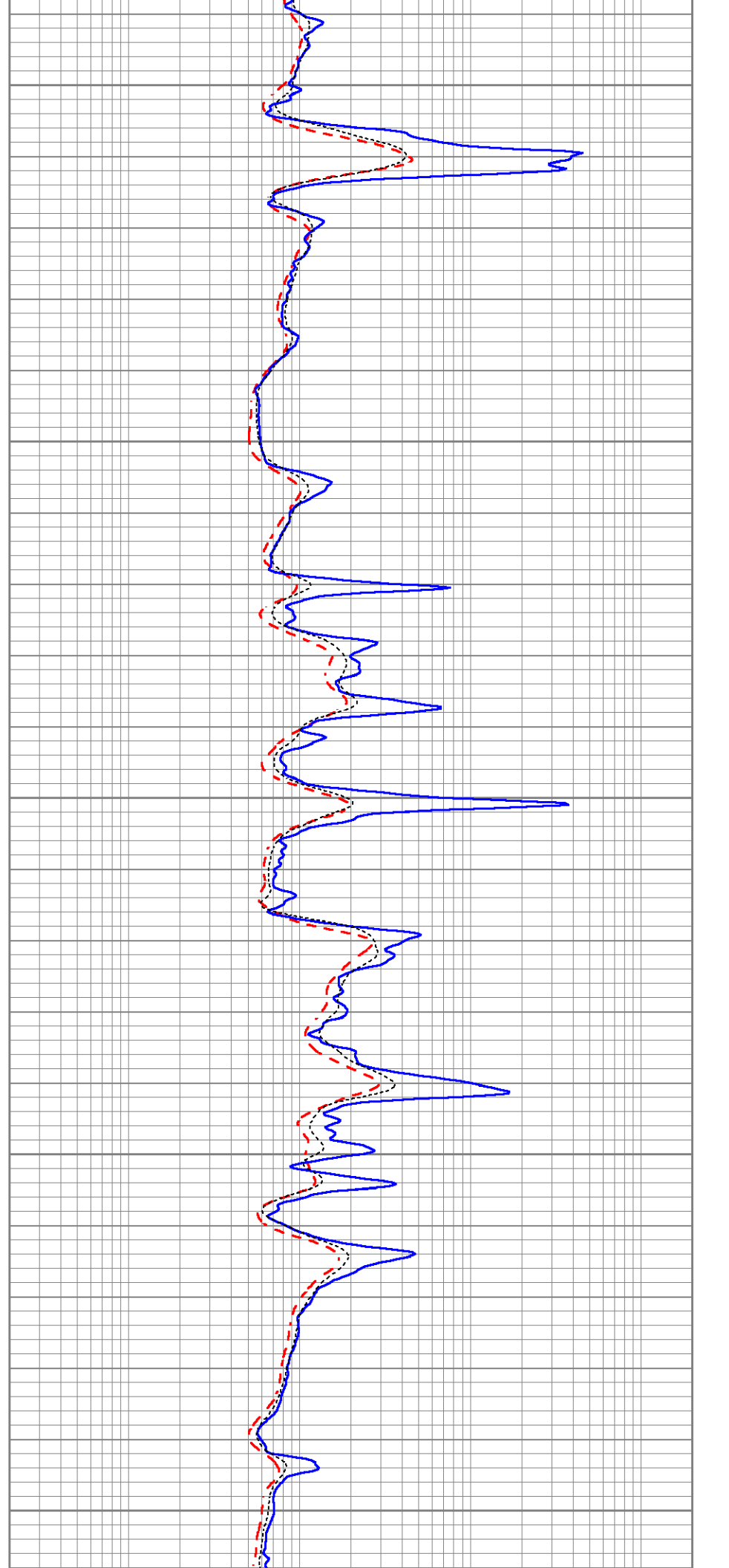
550

600

650

700

750



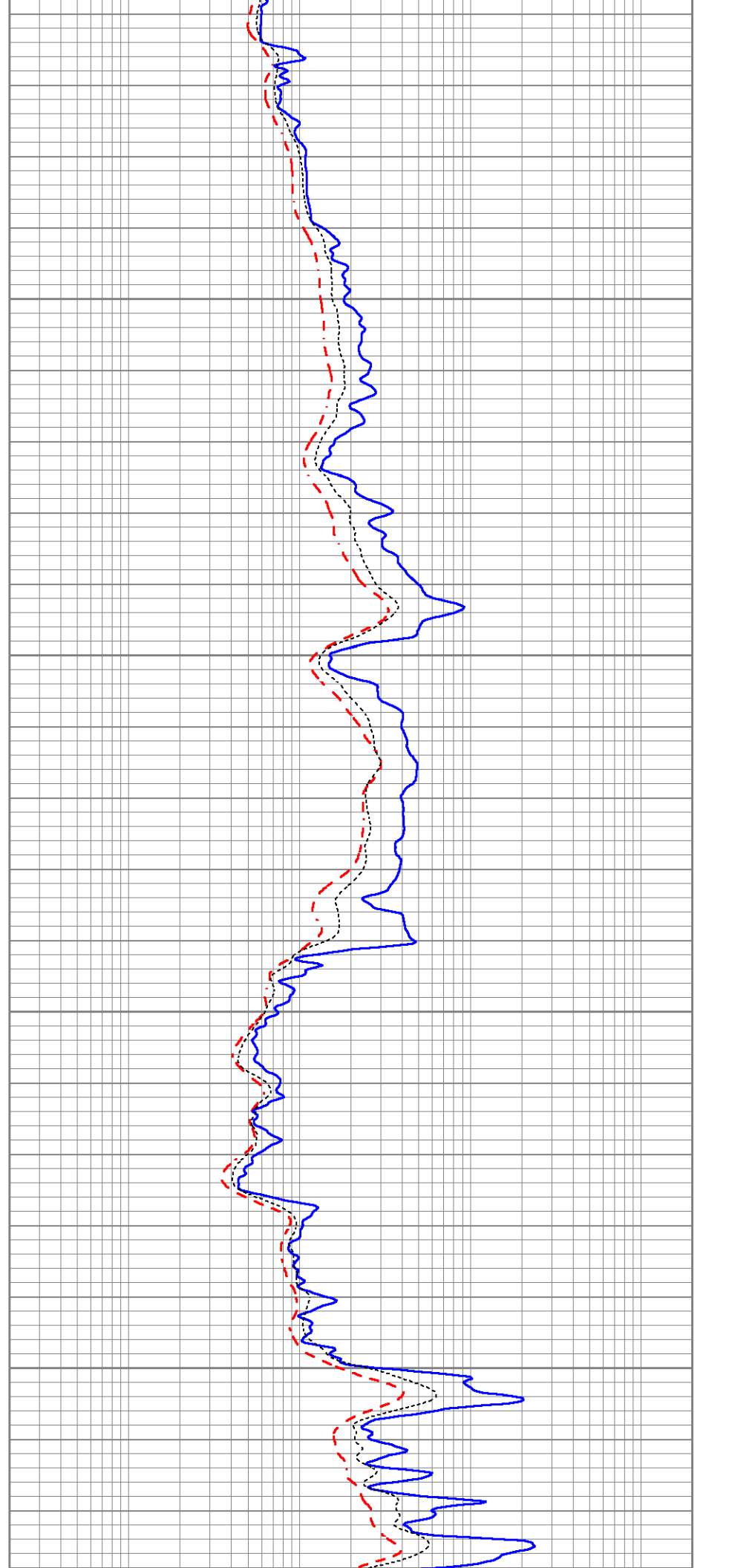


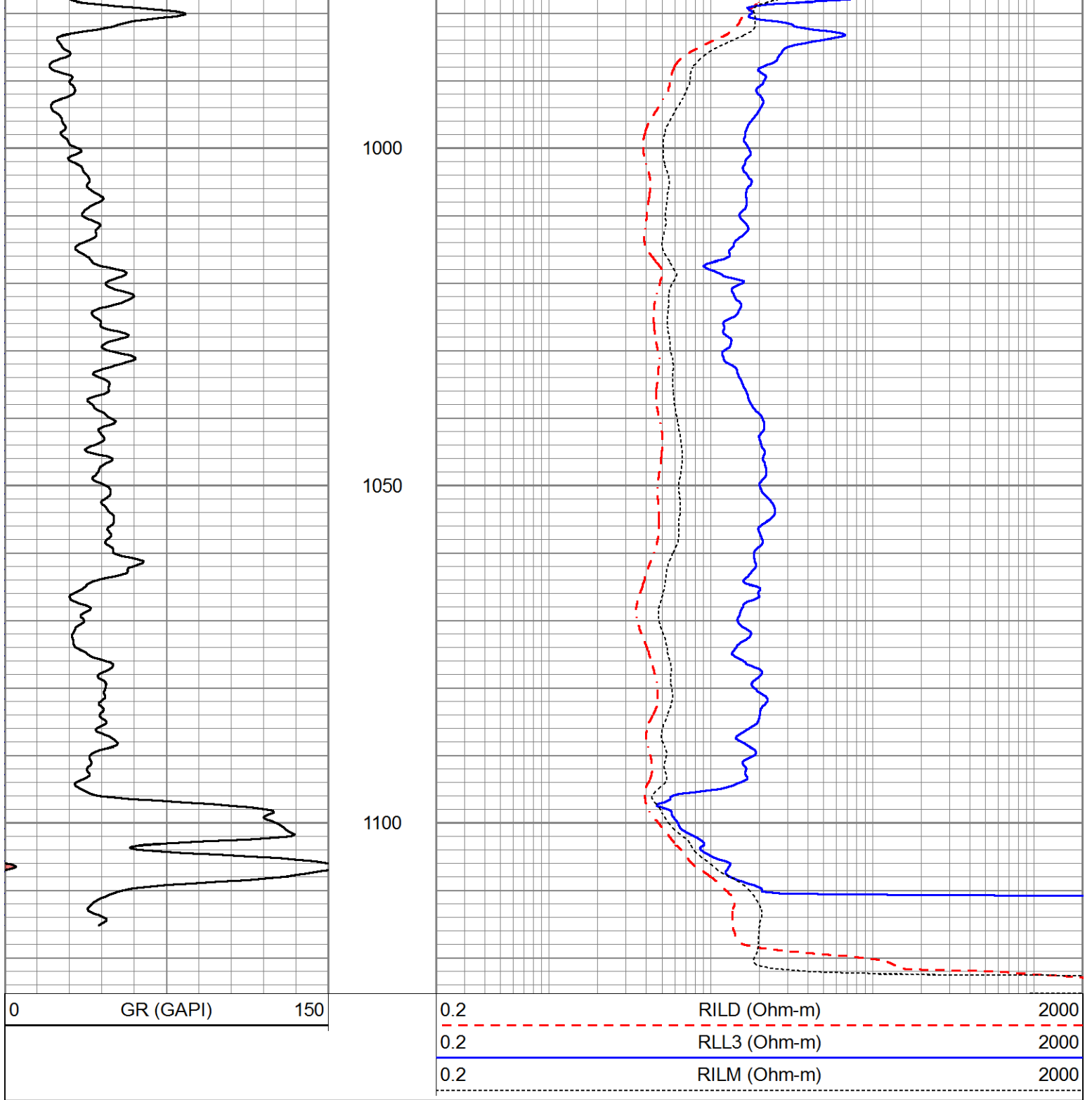
800

850

900

950





Sensor	Offset (ft)	Schematic	Description	Length (ft)	O.D. (in)	Weight (lb)
CLL3	14.83		Cable-CableHead Isulation Sub	1.42	3.00	20.00

				Induction-Landy1538 (1538) Induction Tool	17.59	4.00	300.00
CILD	6.50						
CILM	3.33						
SP	0.83						

Dataset: ow2-8779 colt energy.db: field/well/DIL/pass4
 Total length: 19.01 ft
 Total weight: 320.00 lb
 O.D.: 4.00 in