



MIDWEST SURVEYS
 LOGGING - PERFORATING - CONSULTING SERVICES
 P.O. Box 68, Osawatomie, KS 66064
 913 / 755 - 2128

GAMMA RAY / NEUTRON / CCL

File No. Company Colt Energy, Inc.

Well Fitzpatrick No. FL-1

Field Iola

County Allen State Kansas

Location 2475' FSL & 1155' FWL
 NE-NE-NW-SW

Sec. 9 Twp. 24S Rge. 18E
 Permanent Datum GL Elevation 1022'
 Log Measured From GL
 Drilling Measured From GL

Date 01-06-2015

Run Number One

Depth Driller 1137.0

Depth Logger 1053.8

Bottom Logged Interval 1052.8

Top Log Interval 20.0

Fluid Level Full

Type Fluid Water

Density / Viscosity NA

Salinity - PPM Cl NA

Max Recorded Temp NA

Estimated Cement Top 0.0

Equipment No. 102 Location Osawatimie

Recorded By Gary Windisch

Witnessed By John Amerman

BORE-HOLE RECORD

Run No.	BIT	FROM	TO	SIZE	WGT.	FROM	TO
One	12.25"	0.0	42.5	8.625"	24.0#	0.0	42.5
Two	6.75"	42.5	1137.0	4.50"	10.5#	0.0	1063.0

CASING RECORD	WT.	FROM	TO
Set	At		1059.0

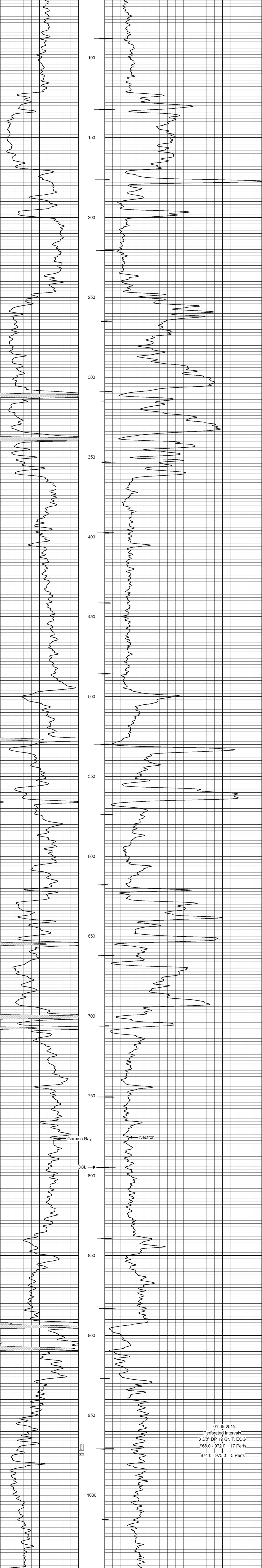
<<< Fold Here >>>

All interpretations are opinions based on inferences from electrical or other measurements and we cannot and do not guarantee the accuracy or correctness of any interpretation, and we shall not, except in the case of gross or willful negligence on our part, be liable or responsible for any loss, costs, damages, or expenses incurred or sustained by anyone resulting from any interpretation made by any of our officers, agents or employees. These interpretations are also subject to our general terms and conditions set out in our current Price Schedule.

Comments

Drilling Contractor :
 Bar Drilling, LLC.

Database File: fitzpatrick1fl.db
 Dataset Pathname: pass1
 Presentation Format: gr-n-ccl
 Dataset Creation: Tue Jan 06 12:11:04 2015 by Log SCH 111116
 Charted by: Depth in Feet scaled 1:240



01-06-2015
 Perforated Intervals
 3 3/8" DP 19 Gr. T. ECG
 968.0 - 972.0 17 Perfs.
 974.0 - 975.0 5 Perfs.