



**MIDWEST SURVEYS**  
 LOGGING - PERFORATING - CONSULTING SERVICES  
 P.O. Box 68, Osawatomie, KS 66064  
 913 / 755 - 2128

**GAMMA RAY / NEUTRON / CCL**

File No.

Company: Altavista Energy, Inc.  
 Well: Johnson No. A-50

Field: Baldwin  
 County: Douglas State: Kansas

Location: 3795' FSL & 4455' FEL  
 NWN-E-SW-NW

Other Services  
 Perforate

API # 15-045-22,068

Sec. 1 Twp. 15S Rge. 20E  
 Permanent Datum: GL Elevation: 1021'  
 Log Measured From: GL  
 Drilling Measured From: GL

Date: 02-26-2014

Run Number	One
Depth Driller	900.0
Depth Logger	841.0
Bottom Logged Interval	840.0
Top Log Interval	200.0
Fluid Level	Full
Type Fluid	Water
Density / Viscosity	NA
Salinity - PPM Cl	NA
Max. Recorded Temp	NA
Estimated Cement Top	0.0
Equipment No.	107
Recorded By	Steve Mindisch
Witnessed By	Doug Eiams

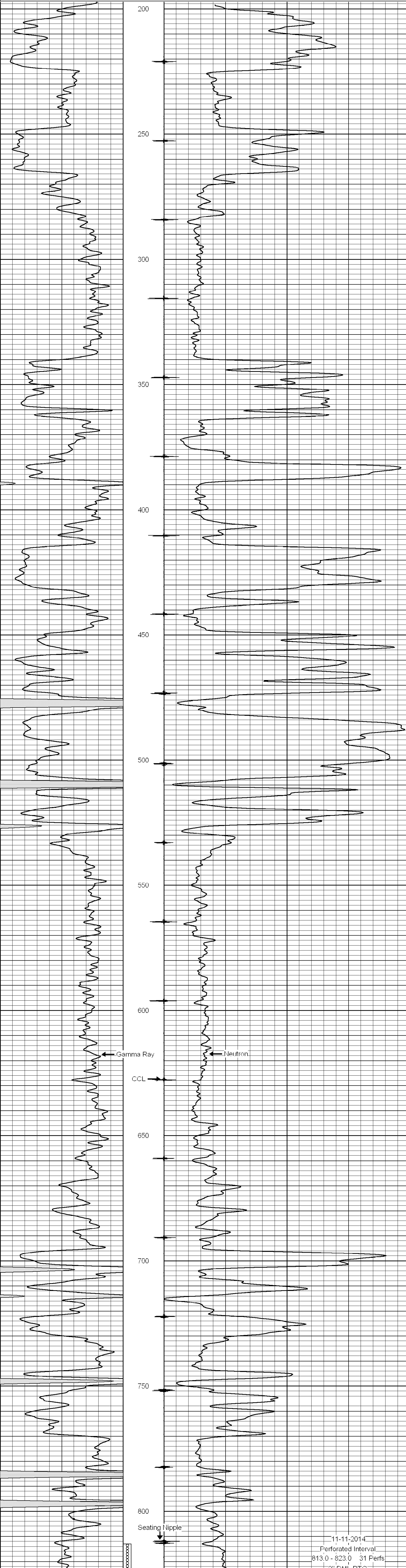
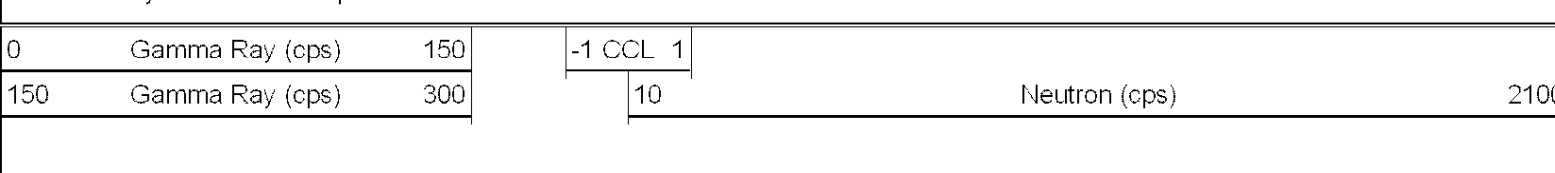
<<< Fold Here >>>

All interpretations are opinions based on inferences from electrical or other measurements and we cannot and do not guarantee the accuracy or correctness of any interpretation, and we shall not, except in the case of gross or willful negligence on our part, be liable or responsible for any loss, costs, damages, or expenses incurred or sustained by anyone resulting from any interpretation made by any of our officers, agents or employees. These interpretations are also subject to our general terms and conditions set out in our current Price Schedule.

Comments

Drilling Contractor :  
 Town Oilfield Services, Inc

Database File: johnson50a.db  
 Dataset Pathname: pass1  
 Presentation Format: gr-n-ccl  
 Dataset Creation: Wed Feb 26 14:27:40 2014 by Log SCH 111116  
 Charted by: Depth in Feet scaled 1:240



11-11-2014  
 Perforated Interval:  
 813.0 - 823.0 31 Perfs  
 2" DML RTG

