



**COMPENSATED DENSITY
NEUTRON
LOG**

Company American Oil LLC.

Well Reidel 1-32

Field Irvin

County Ellis

State Kansas

Location: API #: 15 051 26902

2075' FSL & 1436' FWL

SEC 32 TWP 13S RGE 19W

Permanent Datum Ground Level Elevation 2226'

Log Measured From KB 8' AGL

Drilling Measured From KB

Elevation

K.B. 2234'

D.F. 2233'

G.L. 2226'

Other Services
DIL

Date	2-18-18		
Run Number	One		
Depth Driller	3930'		
Depth Logger	3931'		
Bottom Logged Interval	3926'		
Top Log Interval	3200'		
Casing Driller	8 5/8" @ 220'		
Casing Logger	220'		
Bit Size	7 7/8"		
Type Fluid in Hole	Chemical		
Density / Viscosity	9.2/52		
PH / Fluid Loss	9.7/8.6		
Source of Sample	Pit		
Rm @ Meas. Temp	.75 @ 60 degf		
Rmf @ Meas. Temp	.6 @ 60 degf		
Rmc @ Meas. Temp	1.08 @ 60 degf		
Source of Rmf / Rmc	Calculated		
Rm @ BHT	0.45 @ 97 degf		
Time Circulation Stopped	7:00 am		
Time Logger on Bottom	9:30 am		
Maximum Recorded Temperature	97 degf		
Equipment Number	T127		
Location	Hays, KS.		
Recorded By	L. Smith		
Witnessed By	Mr. Austin Klaus	Mr. Zach Patterson	

<<< Fold Here >>>

All interpretations are opinions based on inferences from electrical or other measurements and we cannot and do not guarantee the accuracy or correctness of any interpretation, and we shall not, except in the case of gross or willful negligence on our part, be liable or responsible for any loss, costs, damages, or expenses incurred or sustained by anyone resulting from any interpretation made by any of our officers, agents or employees. These interpretations are also subject to our general terms and conditions set out in our current Price Schedule.

Comments

Thanks for using Gemini Wireline LLC
785-625-1182

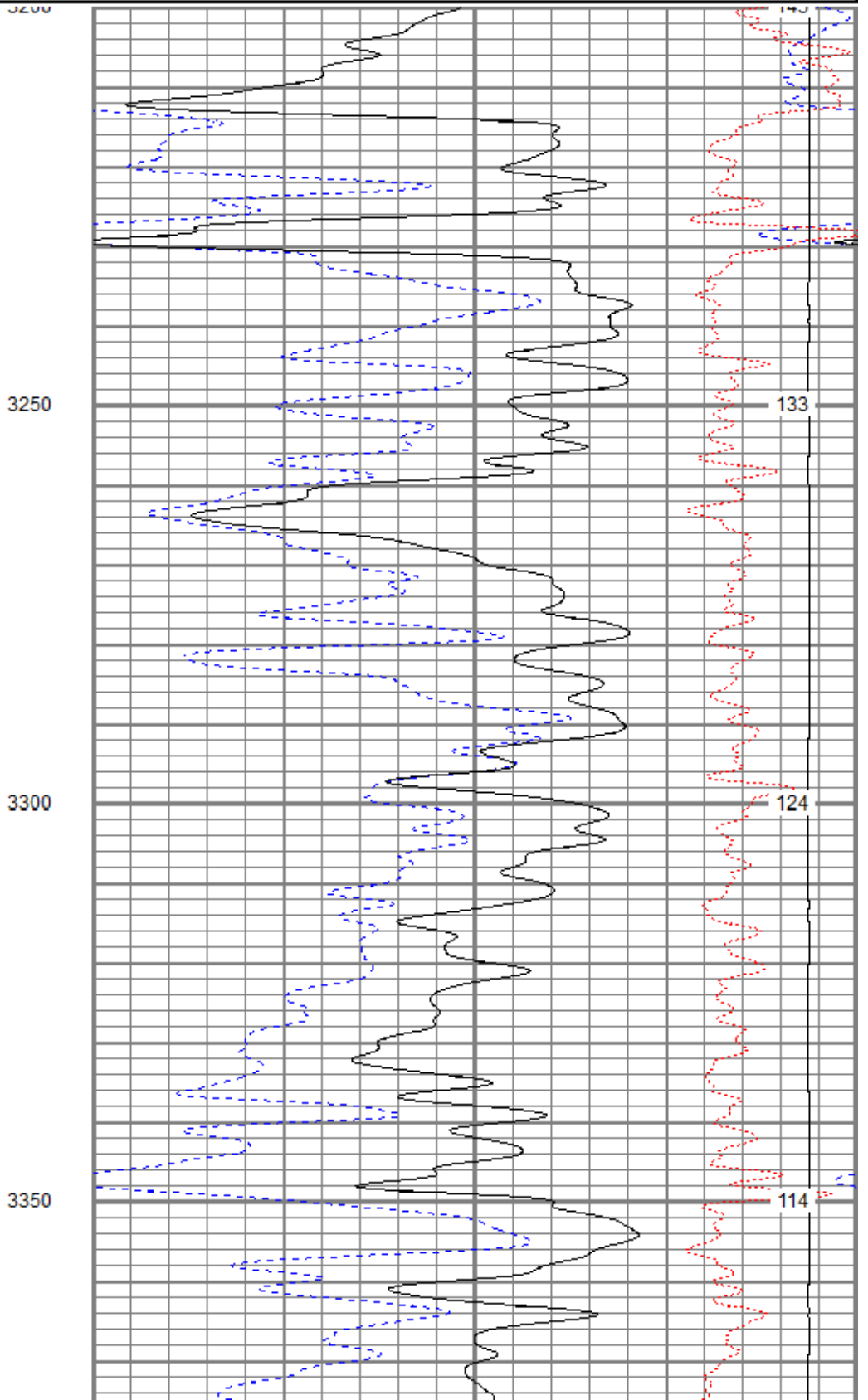
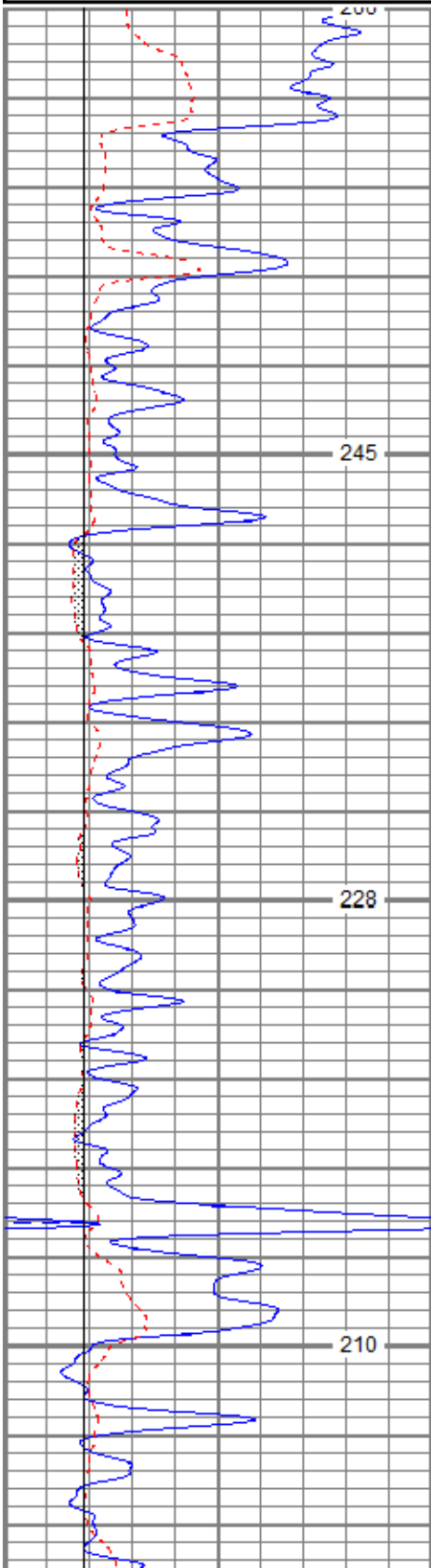


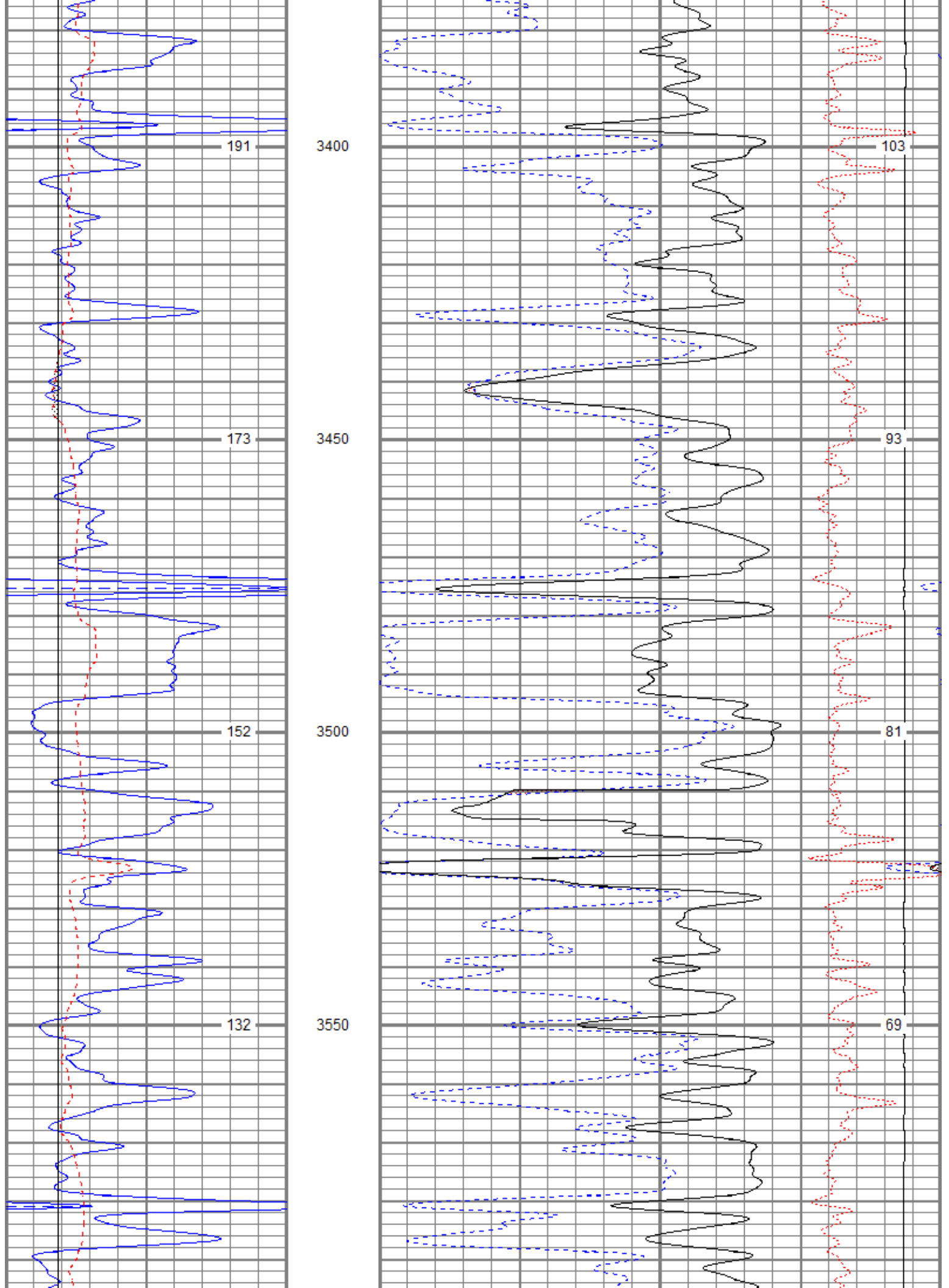
Main Pass

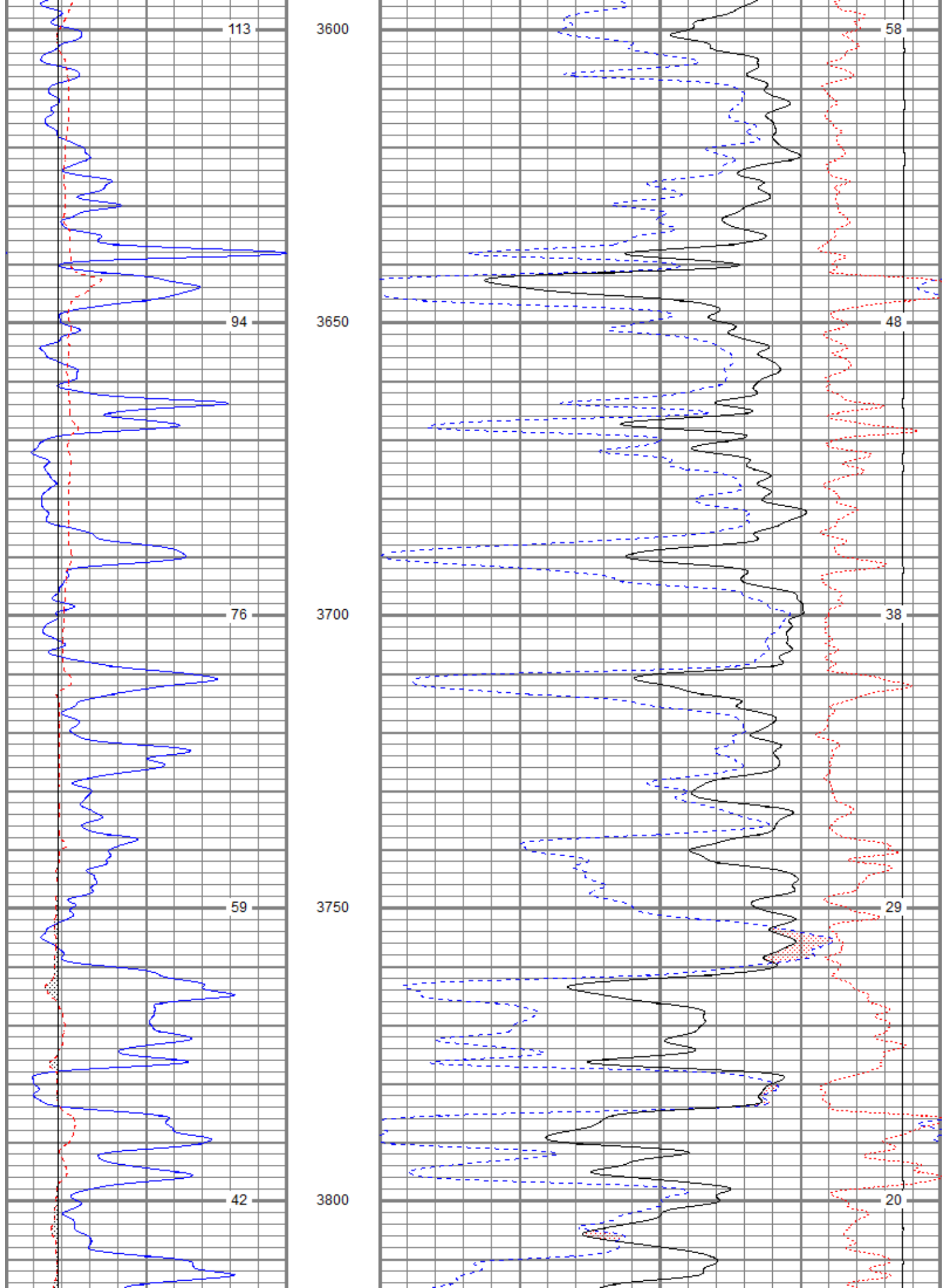
Database File aoreidel1-32oh.db
 Dataset Pathname pass3.3
 Presentation Format kcdnl
 Dataset Creation Mon Feb 19 07:30:46 2018
 Charted by Depth in Feet scaled 1:240

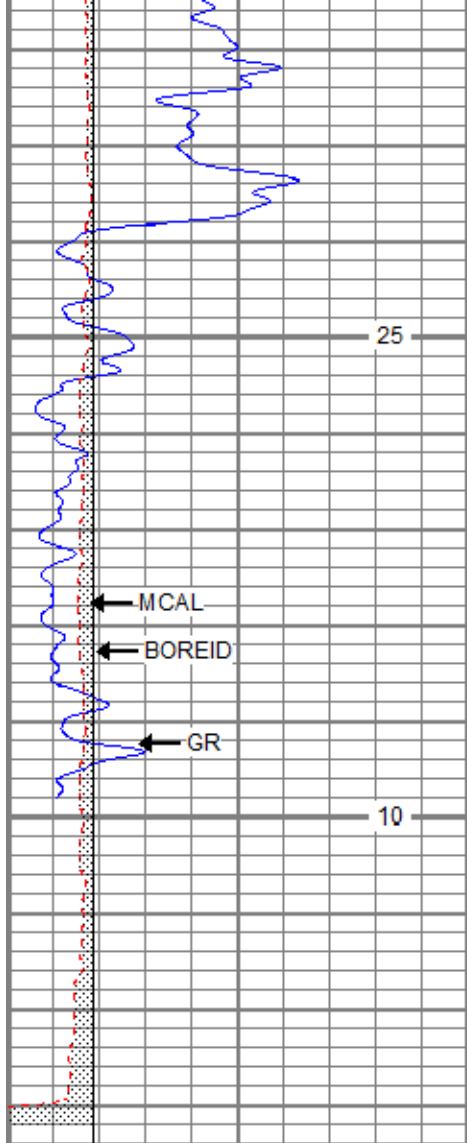
0	GR (GAPI)	150
6	BOREID (in)	16
6	MCAL (in)	16
6	BOREID (in)	16
TBHV (ft3)		

30	NPOR (pu)	-10
30	DPOR (pu)	-10
70	DPOR (pu)	30
-0.25	RHOC (g/cc)	0.25
8000	LTEN (lb)	0
ABHV (ft3)		



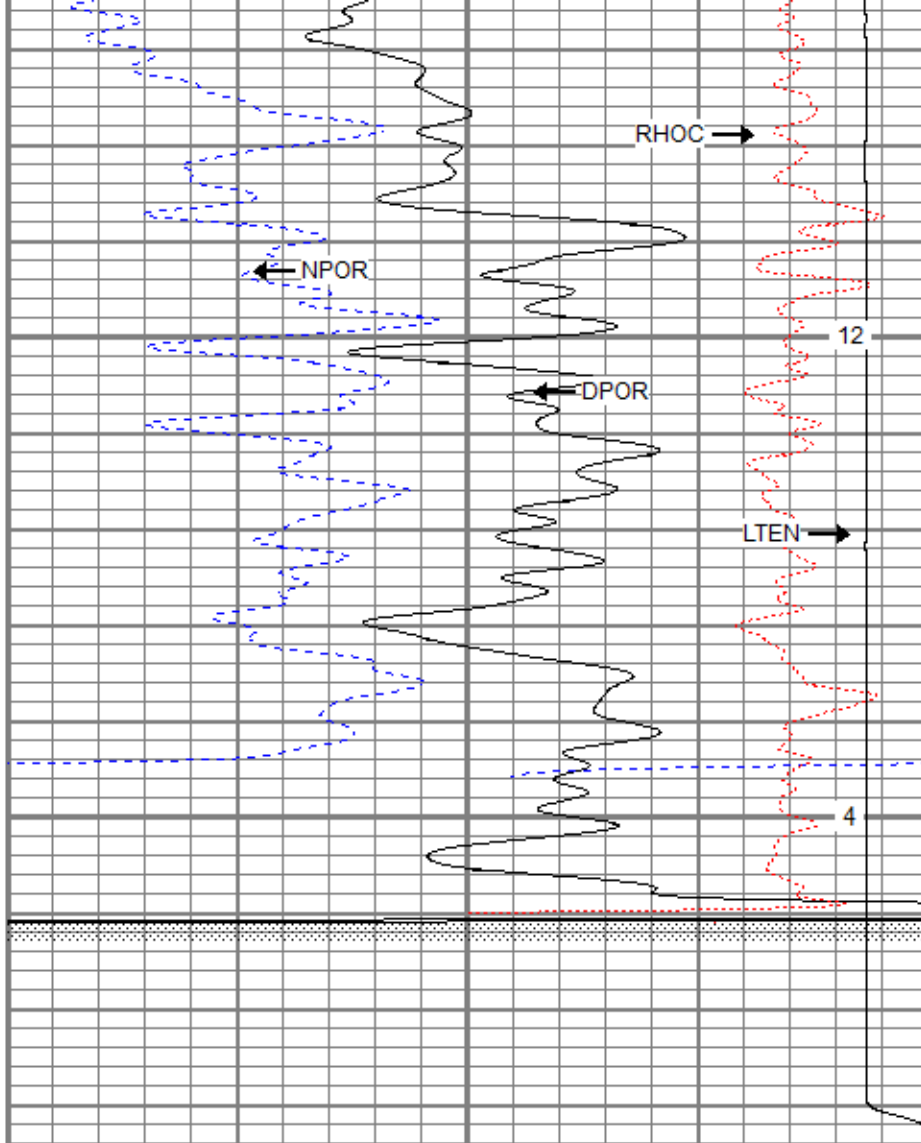






0	GR (GAPI)	150
6	BOREID (in)	16
6	MCAL (in)	16
6	BOREID (in)	16
TBHV (ft3)		

3850

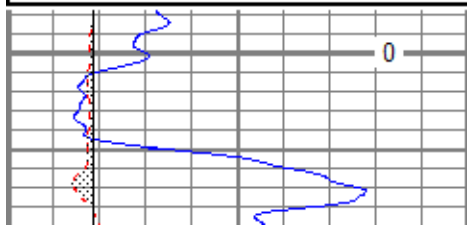


30	NPOR (pu)	-10
30	DPOR (pu)	-10
70	DPOR (pu)	30
-0.25	RHOC (g/cc)	0.25
8000	LTEN (lb)	0
ABHV (ft3)		

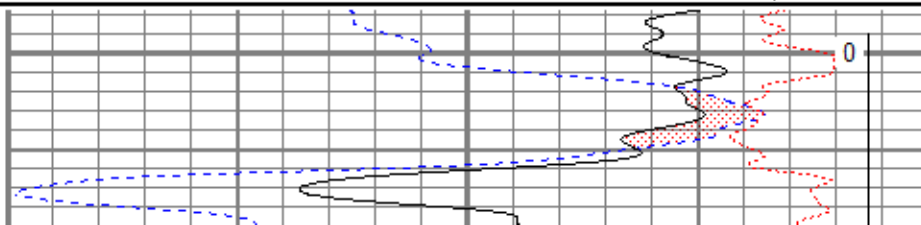
Database File aoreidel1-32oh.db
 Dataset Pathname pass2.1
 Presentation Format kcdnl
 Dataset Creation Sun Feb 18 10:58:06 2018
 Charted by Depth in Feet scaled 1:240

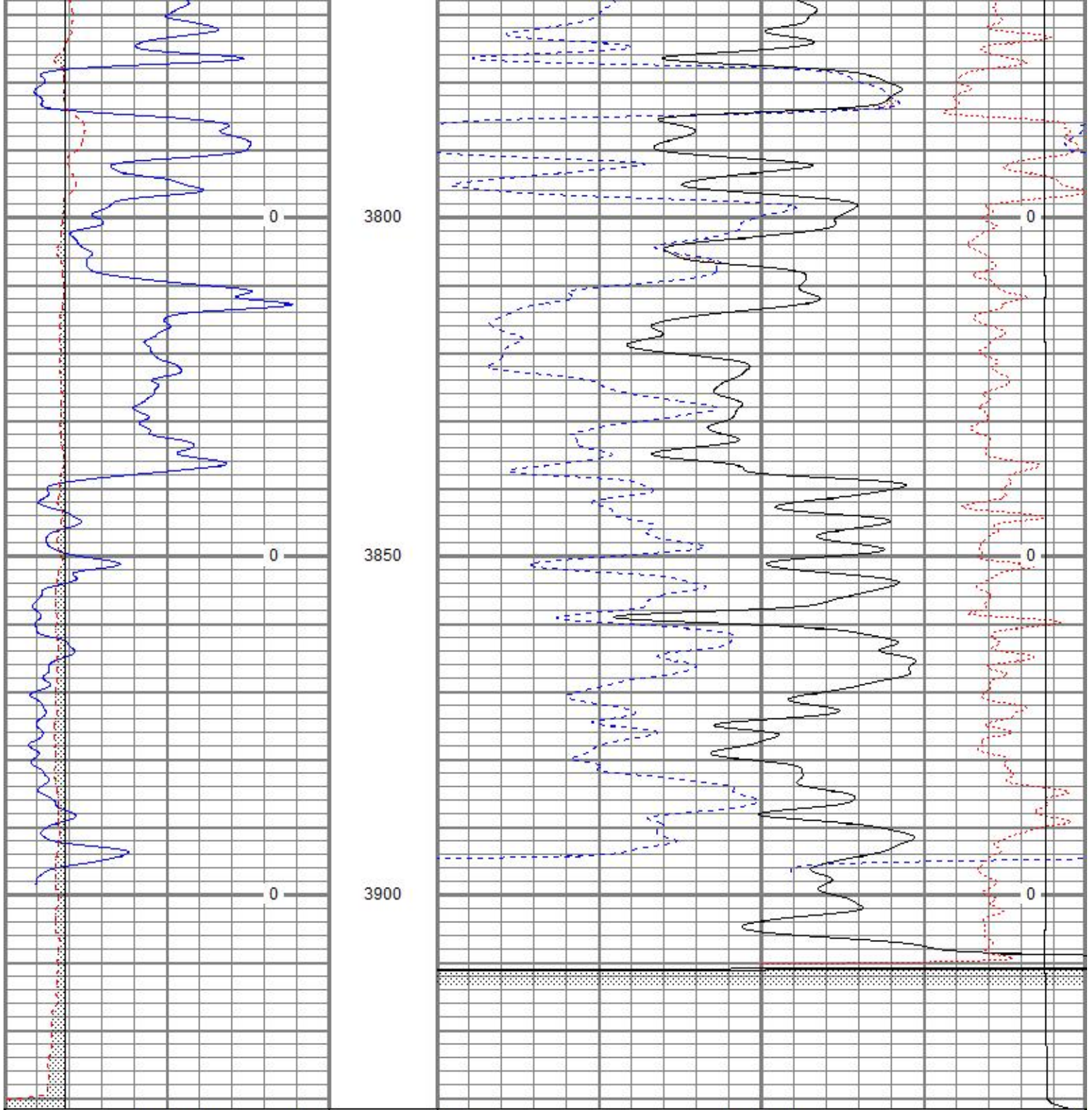
0	GR (GAPI)	150
6	BOREID (in)	16
6	MCAL (in)	16
6	BOREID (in)	16
TBHV (ft3)		

30	NPOR (pu)	-10
30	DPOR (pu)	-10
70	DPOR (pu)	30
-0.25	RHOC (g/cc)	0.25
8000	LTEN (lb)	0
ABHV (ft3)		



3750





0	GR (GAPI)	150
6	BOREID (in)	16
6	MCAL (in)	16
6	BOREID (in)	16
TBHV (ft3)		

30	NPOR (pu)	-10
30	DPOR (pu)	-10
70	DPOR (pu)	30
-0.25	RHO (g/cc)	0.25
8000	LTEN (lb)	0
ABHV (ft3)		



Repeat Pass

g/cc

g/cc

After Survey Verification

TargetMeasuredg/cc
g/cc
g/ccg/cc
g/cc
g/cc

Gamma Ray Calibration Report

Serial Number:	2000	
Tool Model:	P2000	
Performed:	Sun Feb 18 09:53:39 2018	
Calibrator Value:	1.0	GAPI
Background Reading:	0.0	cps
Calibrator Reading:	1.0	cps
Sensitivity:	0.6500	GAPI/cps

Neutron Calibration Report

Serial Number:	5108	
Tool Model:	PROBE	
Performed:	Sun Feb 19 03:21:57 2017	
Calibrator Value:	1	NAPI
Calibrator Reading:	1	cps
Sensitivity:	1	NAPI/cps

Sensor	Offset (ft)	Schematic	Description	Length (ft)	O.D. (in)	Weight (lb)
NEU	36.60		CHD-None	0.75	1.50	5.00
			NEU-PROBE (5108) Probe	4.92	3.63	85.00
GR	30.81		GR-P2000 (2000)	3.67	3.25	40.00
			CDL-DHT (2501DHT) Digital High Temp CDL Tool	9.69	4.00	201.00
LSD	22.02					
DCAL	21.73					
SSD	21.48					
HEADVOLT	19.71					
SP	10.60					
CILD	10.60		DIL-ADM (1842) Dual Induction	19.71	4.00	300.00
CILM	6.89					

RLL3

1.70

Dataset: aoreidel1-32oh.db: field/well/run1/pass32
Total length: 38.73 ft
Total weight: 631.00 lb
O.D.: 4.00 in