



**MICRO
RESISTIVITY
LOG**

Company American Oil LLC.

Well Reidel 1-32

Field Irvin

County Ellis

State Kansas

Location: 2075' FSL & 1436' FWL

SEC 32 TWP 13S RGE 19W

Permanent Datum Ground Level Elevation 2226'

Log Measured From KB 8' AGL

Drilling Measured From KB

Other Services
CDNL

Elevation
K.B. 2234'
D.F. 2233'
G.L. 2226'

Date	2-18-18
Run Number	Two
Depth Driller	3930'
Depth Logger	3931'
Bottom Logged Interval	3929'
Top Log Interval	3200'
Casing Driller	8 5/8" @ 220'
Casing Logger	220'
Bit Size	7 7/8"
Type Fluid in Hole	Chemical
Density / Viscosity	9.2/52
pH / Fluid Loss	9.7/8.6
Source of Sample	Pit
Rm @ Meas. Temp	.75 @ 60 degf
Rmf @ Meas. Temp	.6 @ 60 degf
Rmc @ Meas. Temp	1.08 @ 60 degf
Source of Rmf / Rmc	Calculated
Rm @ BHT	0.45 @ 97 degf
Time Circulation Stopped	7:00 am
Time Logger on Bottom	11:00 am
Maximum Recorded Temperature	97 degf
Equipment Number	T127
Location	Hays, KS.
Recorded By	L. Smith
Witnessed By	Mr. Austin Klaus

<<< Fold Here >>>

All interpretations are opinions based on inferences from electrical or other measurements and we cannot and do not guarantee the accuracy or correctness of any interpretation, and we shall not, except in the case of gross or willful negligence on our part, be liable or responsible for any loss, costs, damages, or expenses incurred or sustained by anyone resulting from any interpretation made by any of our officers, agents or employees. These interpretations are also subject to our general terms and conditions set out in our current Price Schedule.

Comments

Thanks for using Gemini Wireline LLC
785-625-1182

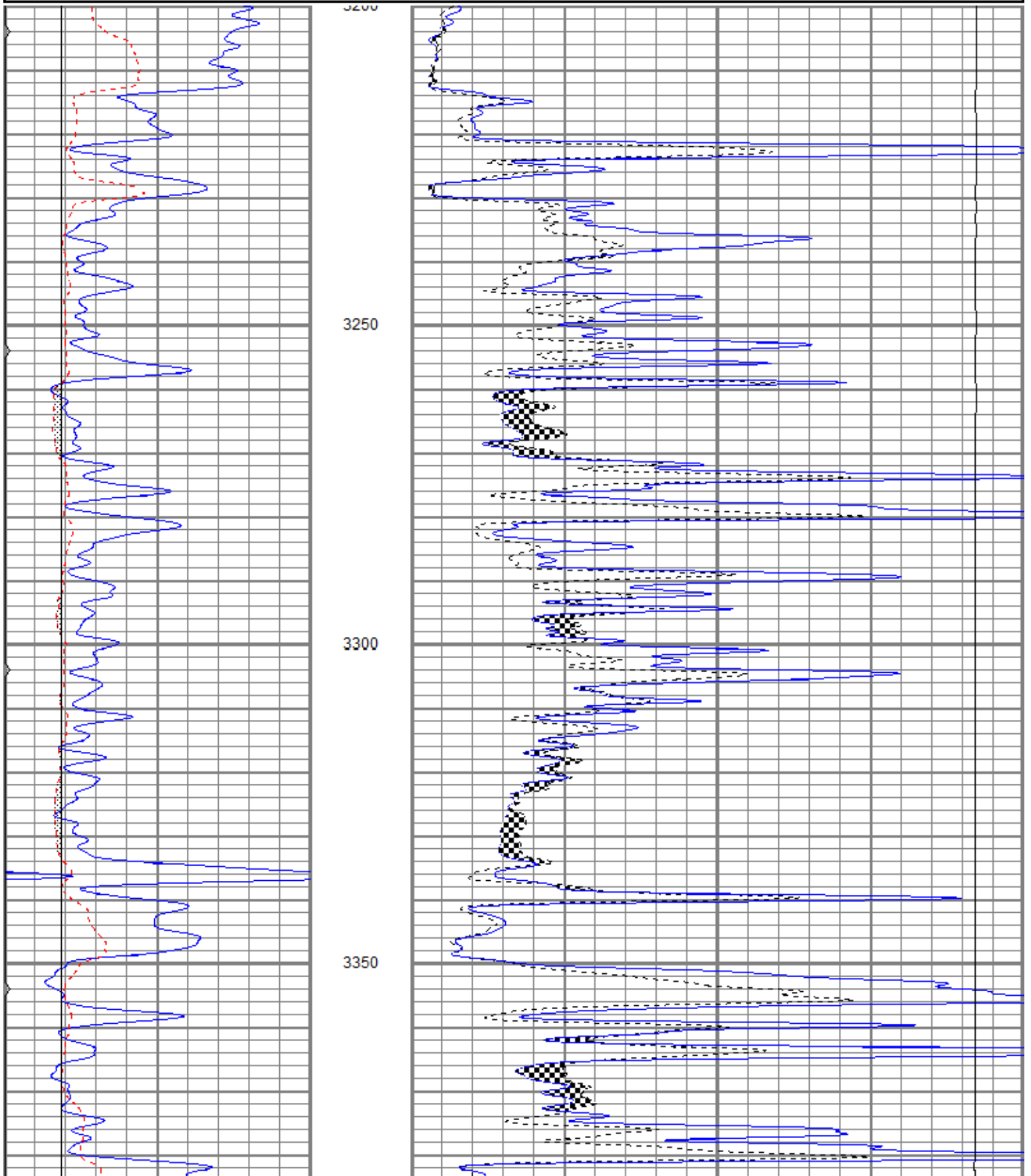


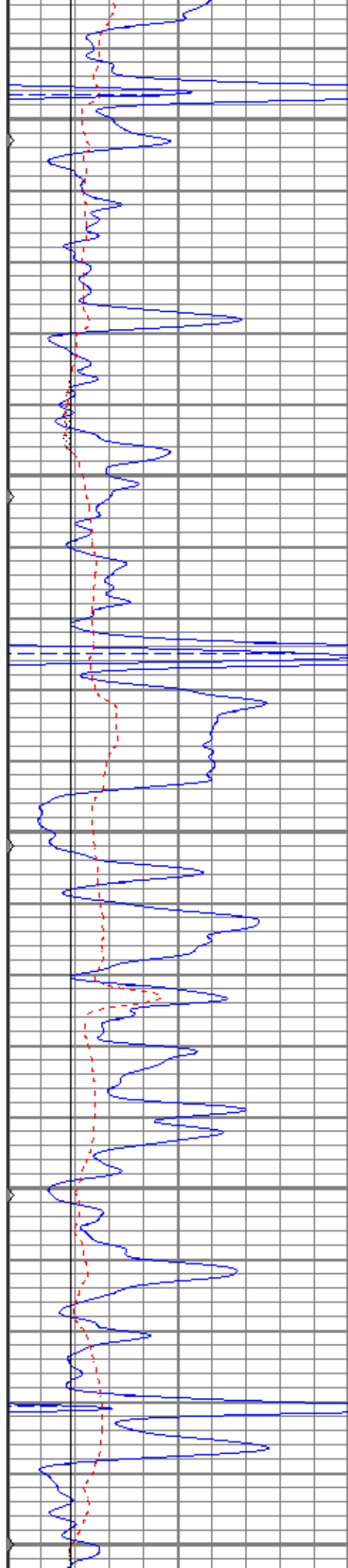
Main Pass

Database File aoreidel1-32oh.db
 Dataset Pathname pass5.3
 Presentation Format kml
 Dataset Creation Sun Feb 18 12:09:23 2018
 Charted by Depth in Feet scaled 1:240

0	GR (GAPI)	150
6	MCAL (in)	16
6	BOREID (in)	16
0	MINMK	50

0	MN 2" (Ohm-m)	20
0	MI 1" (Ohm-m)	20
10000	LTEN (lb)	0





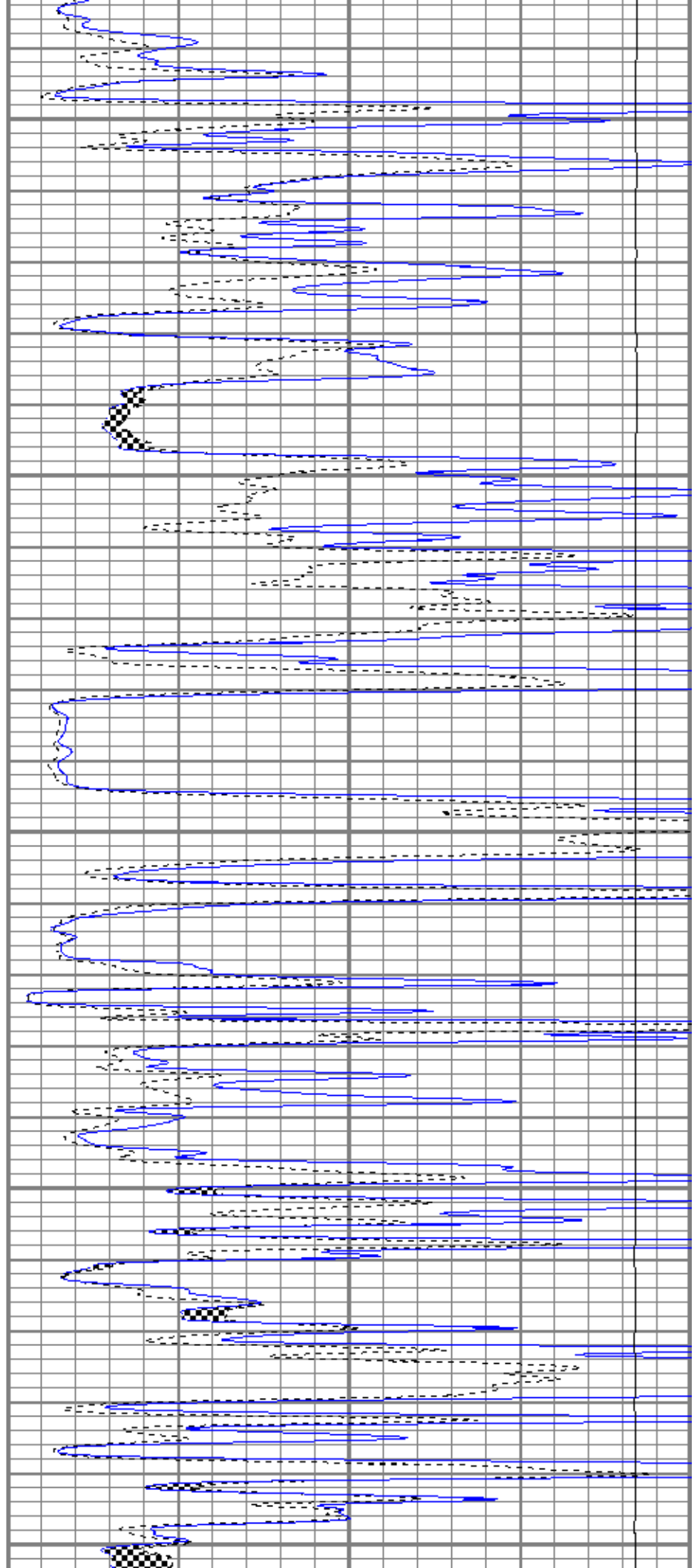
3400

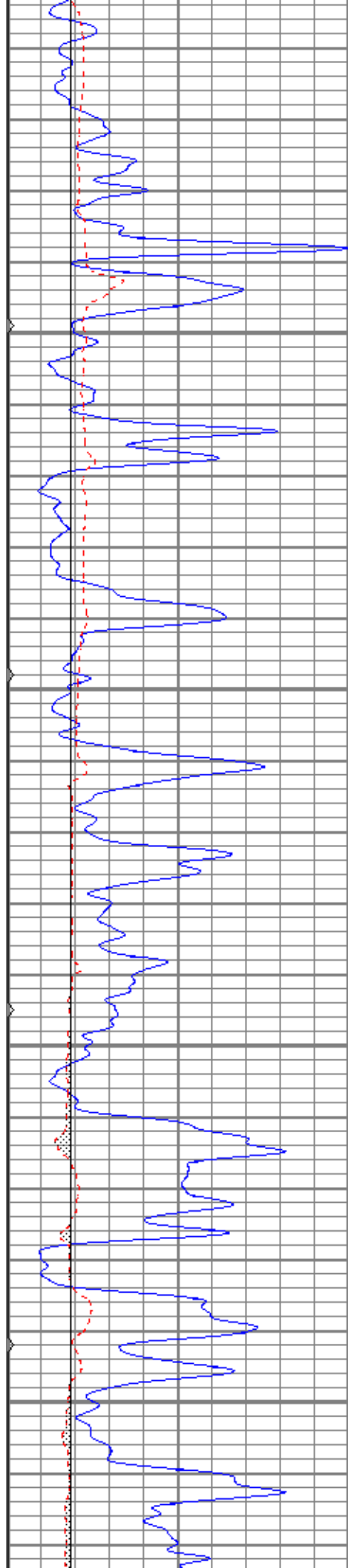
3450

3500

3550

3600



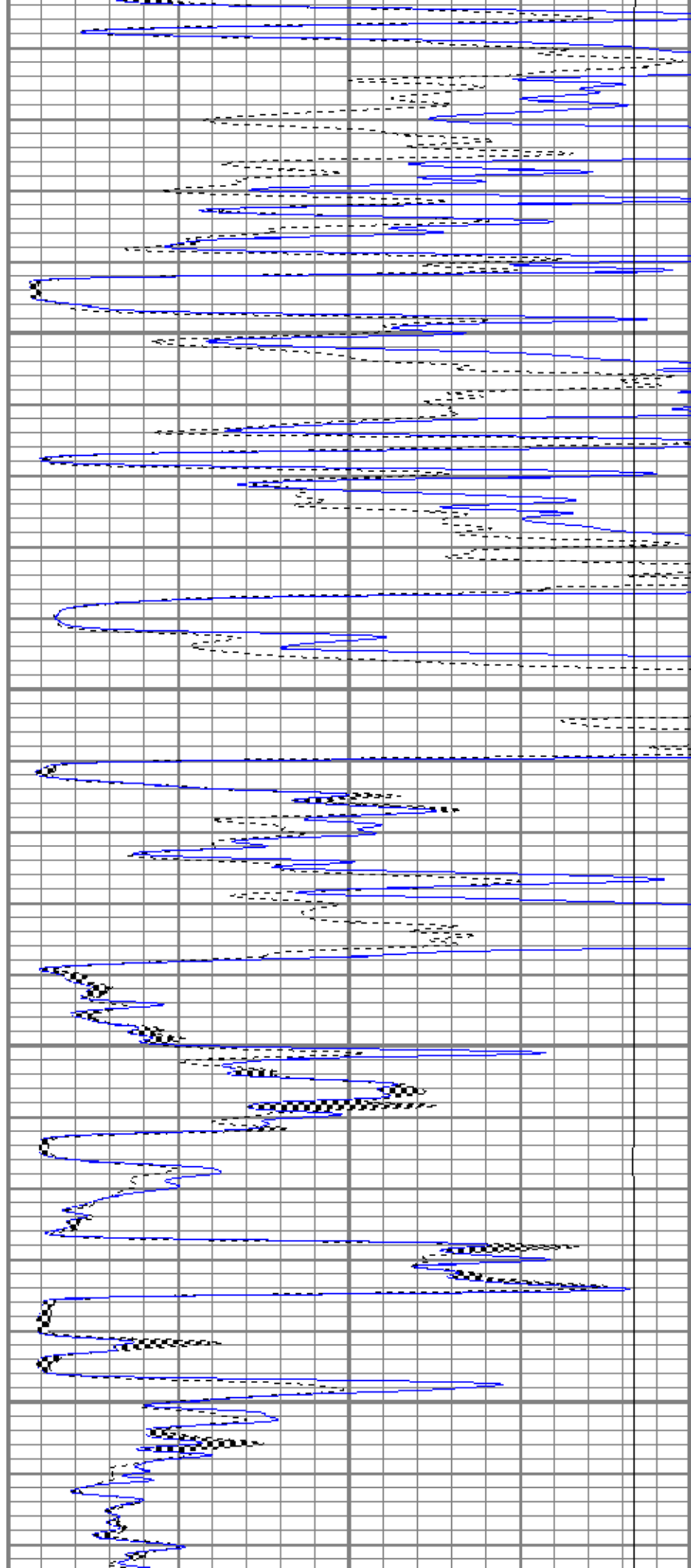


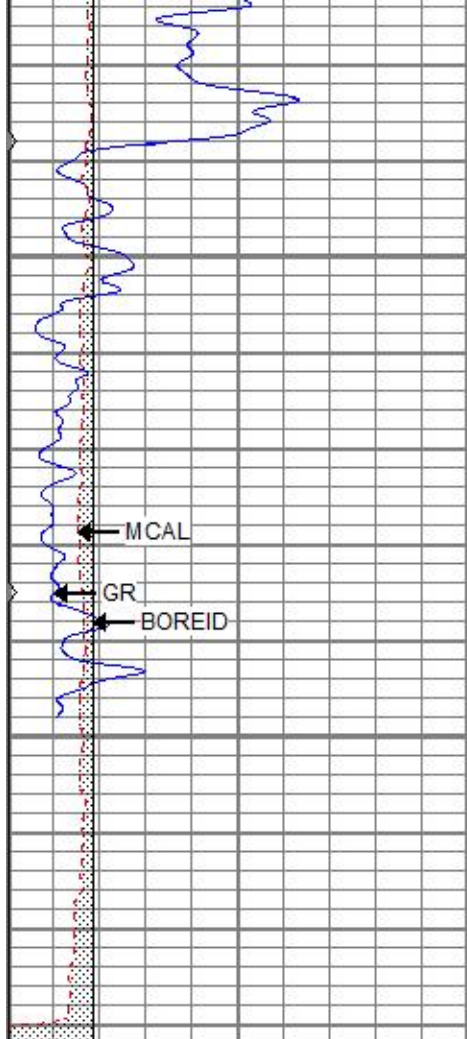
3650

3700

3750

3800

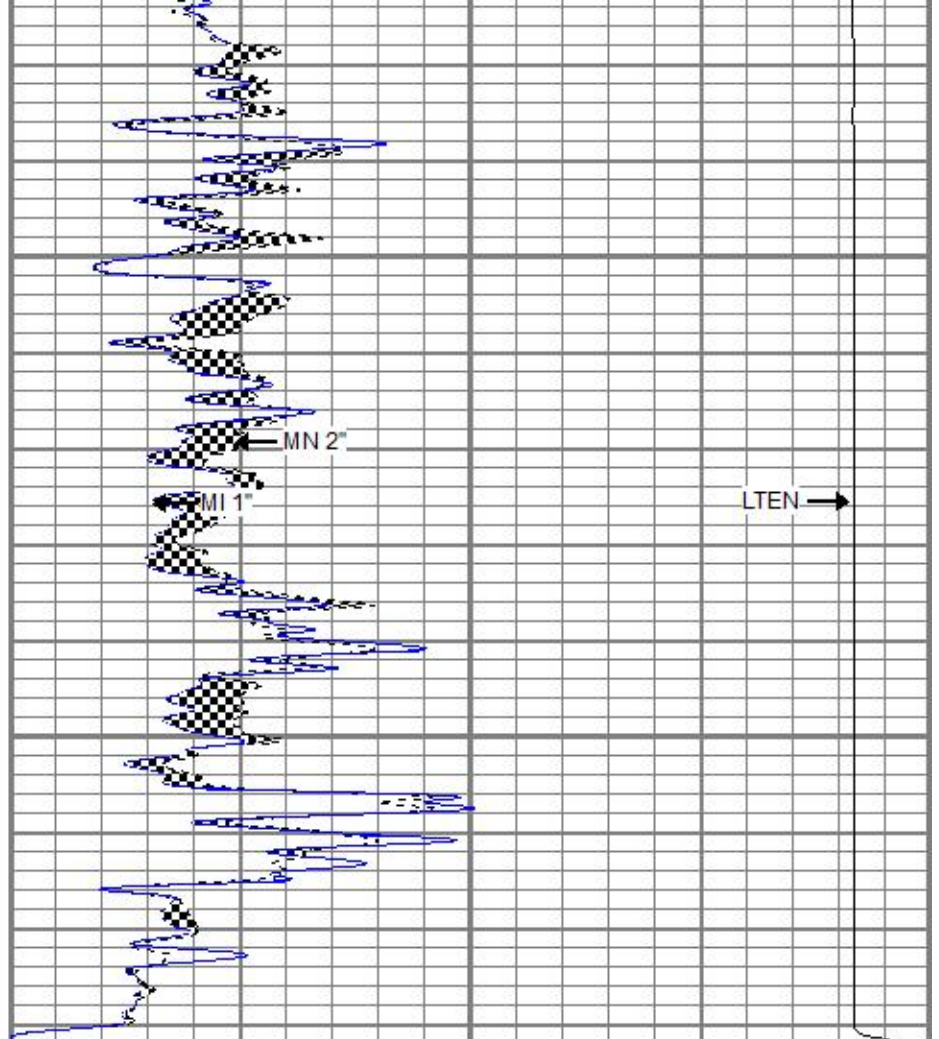




3850

3900

0	GR (GAPI)	150
6	MCAL (in)	16
6	BOREID (in)	16
0	MINMK	50



0	MN 2" (Ohm-m)	20
0	MI 1" (Ohm-m)	20
10000	LTEN (lb)	0

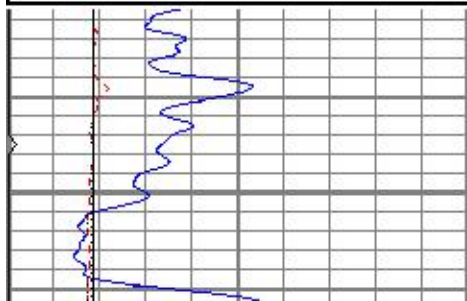


Repeat Pass

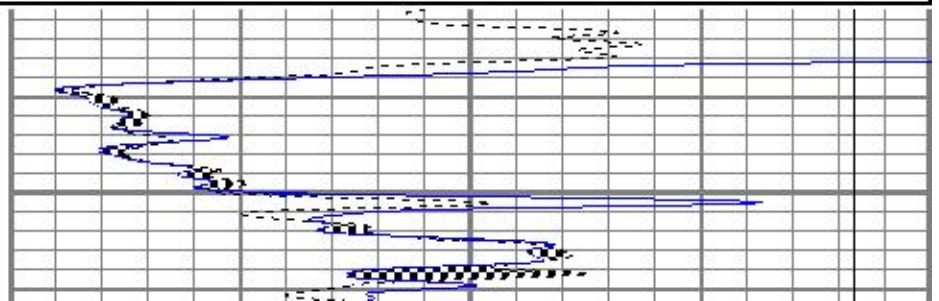
Database File aoreidel1-32oh.db
 Dataset Pathname pass4.1
 Presentation Format kml
 Dataset Creation Sun Feb 18 12:11:08 2018
 Charted by Depth in Feet scaled 1:240

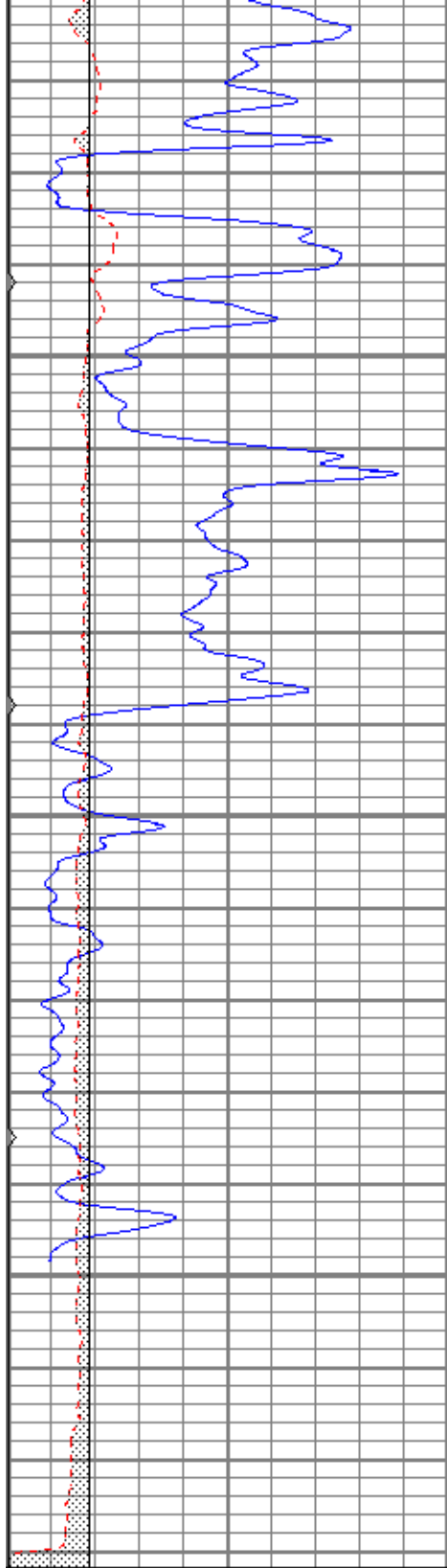
0	GR (GAPI)	150
6	MCAL (in)	16
6	BOREID (in)	16
0	MINMK	50

0	MN 2" (Ohm-m)	20
0	MI 1" (Ohm-m)	20
10000	LTEN (lb)	0



3750



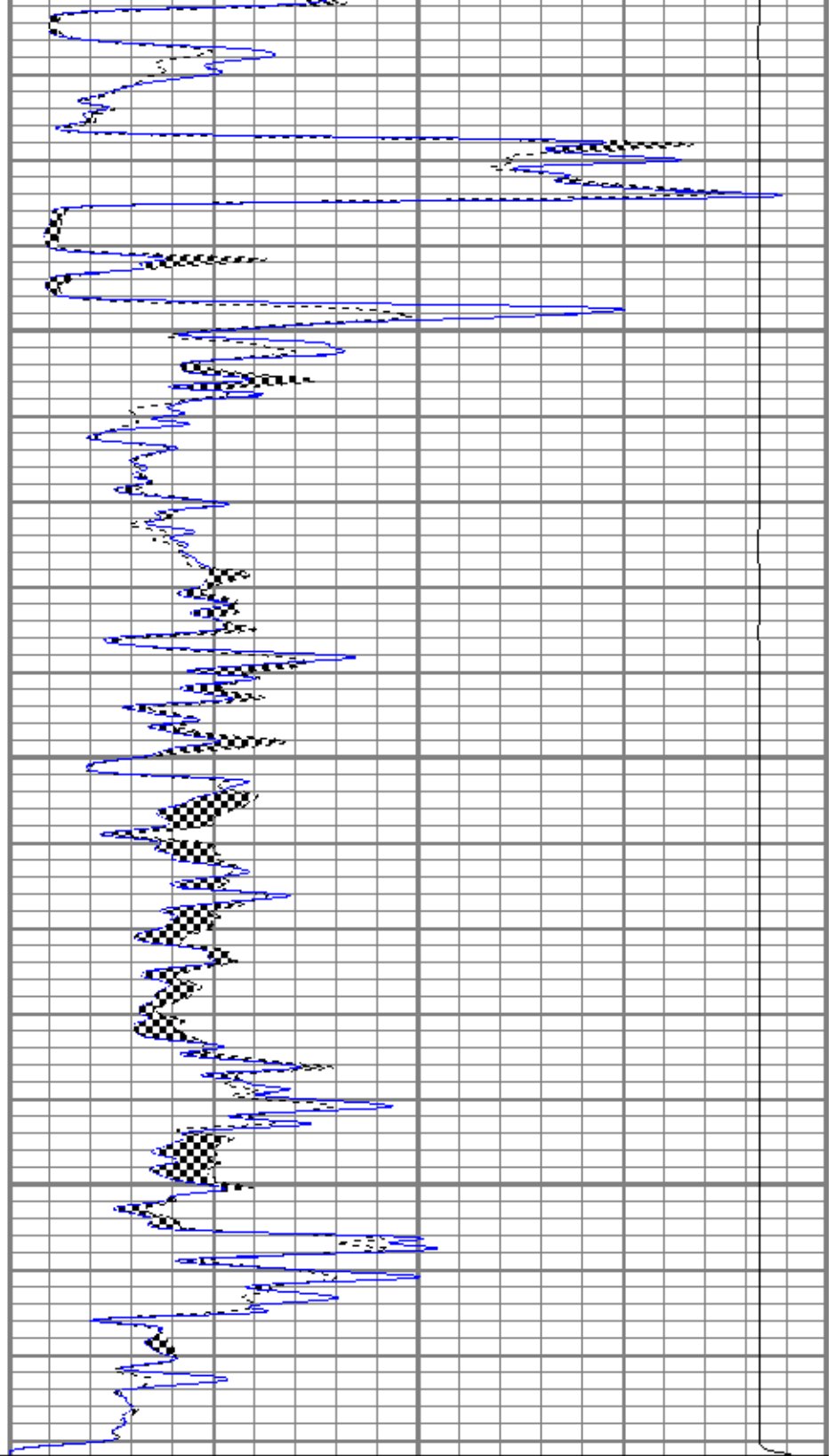


3800

3850

3900

0	GR (GAPI)	150
6	MCAL (in)	16
6	BOREID (in)	16
0	MINMK	50



0	MN 2" (Ohm-m)	20
0	MI 1" (Ohm-m)	20
10000	LTEN (lb)	0

Calibration Report

Database File aoreidel1-32oh.db
 Dataset Pathname pass5.3
 Dataset Creation Sun Feb 18 12:09:23 2018

Microlog Calibration Report

Serial-Model: 012-Pengo

	Readings			References			Results	
	Zero	Cal		Zero	Cal		m	b
Normal	0.0038	0.4346	V	0.0000	10.0000	Ohm-m	23.2111	-0.0886
Inverse	0.0041	0.6626	V	0.0000	7.5000	Ohm-m	11.3900	-0.0467
Caliper	2.0530	4.7700	V	7.4500	14.0000	in	2.4108	2.5006

Sensor	Offset (ft)	Schematic	Description	Length (ft)	O.D. (in)	Weight (lb)
MCAL MI MN	1.30		CHD-None	0.75	1.50	5.00
	1.30		ML-Pengo (012)	6.97	3.50	100.00
	1.30					
Dataset: aoreidel1-32oh.db: field/well/run1/pass5.3 Total length: 7.72 ft Total weight: 105.00 lb O.D.: 3.50 in						