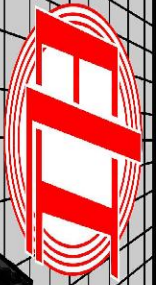


MICRO LOG



Company ARP OPERATING, LLC.
 Well CV #2-9
 Field SWEET WILLIAM NORTHWEST
 County ELLIS State KANSAS

Location: API #: 15-051-26984-0000
 500' FSL & 1300' FEL
 SEC 9 TWP 12S RGE 20W
 Permanent Datum GROUND LEVEL Elevation 2296
 Log Measured From KELLY BUSHING 5' A.G.L
 Drilling Measured From KELLY BUSHING
 Other Services CDL/CNL/PE DIL
 Elevation K.B. 2301
 D.F. 2299
 G.L. 2296

Date	5/18/20	
Run Number	TWO	
Depth Driller	4059	
Depth Logger	4056	
Bottom Logged Interval	4054	
Top Log Interval	3400	
Casing Driller	8 5/8" @ 217'	
Casing Logger	220'	
Bit Size	7 7/8	
Type Fluid in Hole	CHEMICAL MUD	CHLORIDES 4100 PPM
Density / Viscosity	9.1/56	
pH / Fluid Loss	11.0/6.0	
Source of Sample	FLOWLINE	
Rm @ Meas. Temp	.70 @ 82F	
Rmf @ Meas. Temp	.52 @ 82F	
Rmc @ Meas. Temp	.84 @ 82F	
Source of Rmf / Rmc	MEASUREMENT	
Rm @ BHT	.49 @ 117F	
Time Circulation Stopped	2 HOURS	
Time Logger on Bottom	////	
Maximum Recorded Temperature	117F	
Equipment Number	3802	
Location	HAYS, KANSAS	
Recorded By	JASON CAPPELLUCCI	
Witnessed By	SEAN DEENIHAN	

<<< Fold Here >>>

All interpretations are opinions based on inferences from electrical or other measurements and we cannot and do not guarantee the accuracy or correctness of any interpretation, and we shall not, except in the case of gross or willful negligence on our part, be liable or responsible for any loss, costs, damages, or expenses incurred or sustained by anyone resulting from any interpretation made by any of our officers, agents or employees. These interpretations are also subject to our general terms and conditions set out in our current Price Schedule.

Comments

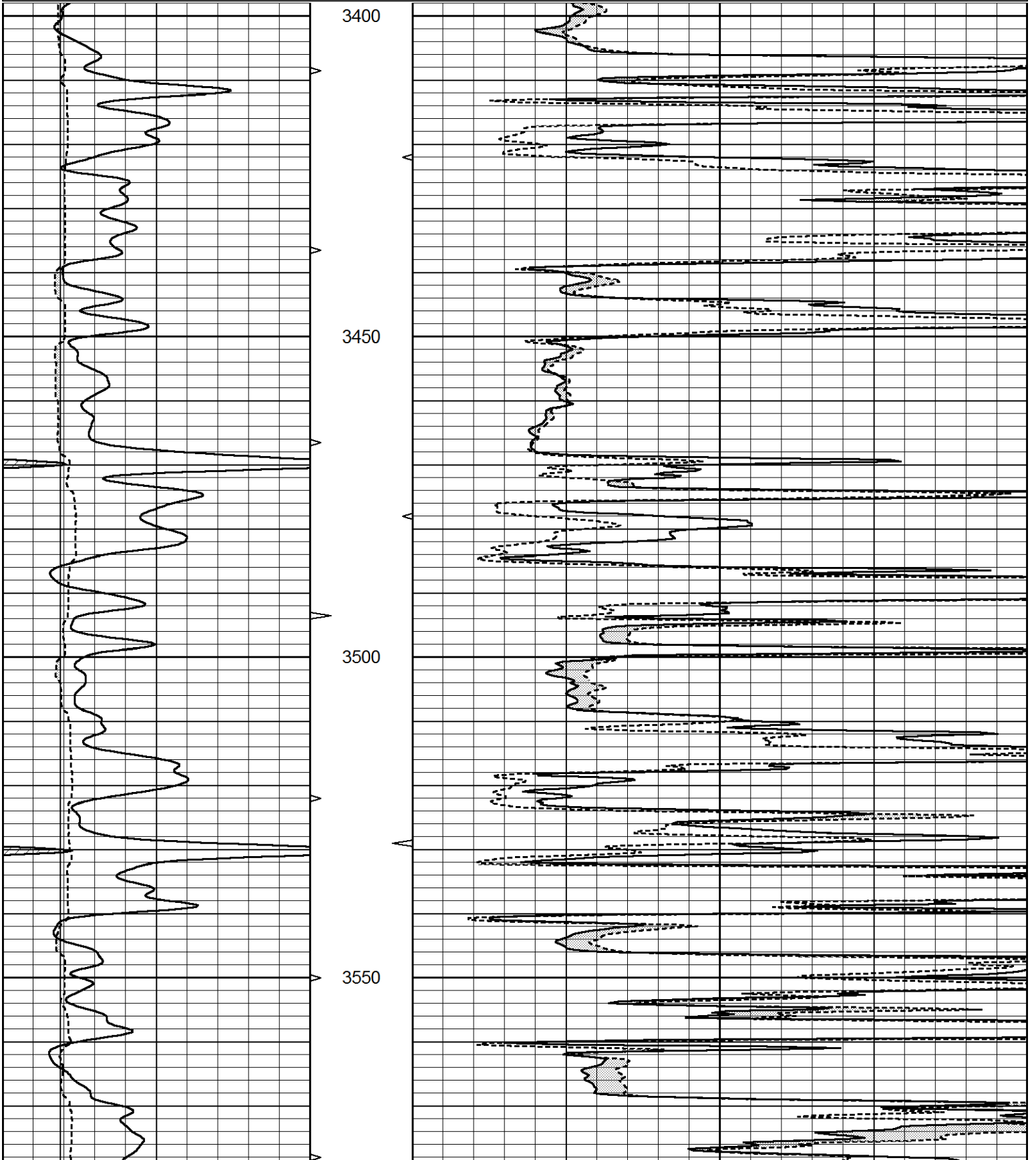
THANK YOU FOR USING ELI WIRELINE SERVICES, HAYS, KS. (785) 628-6395
 DIRECTIONS
 ELLIS KS. - 5 NORTH ON BLKTOP TO SEVERIN RD. - 1/2 WEST - NORTH INTO

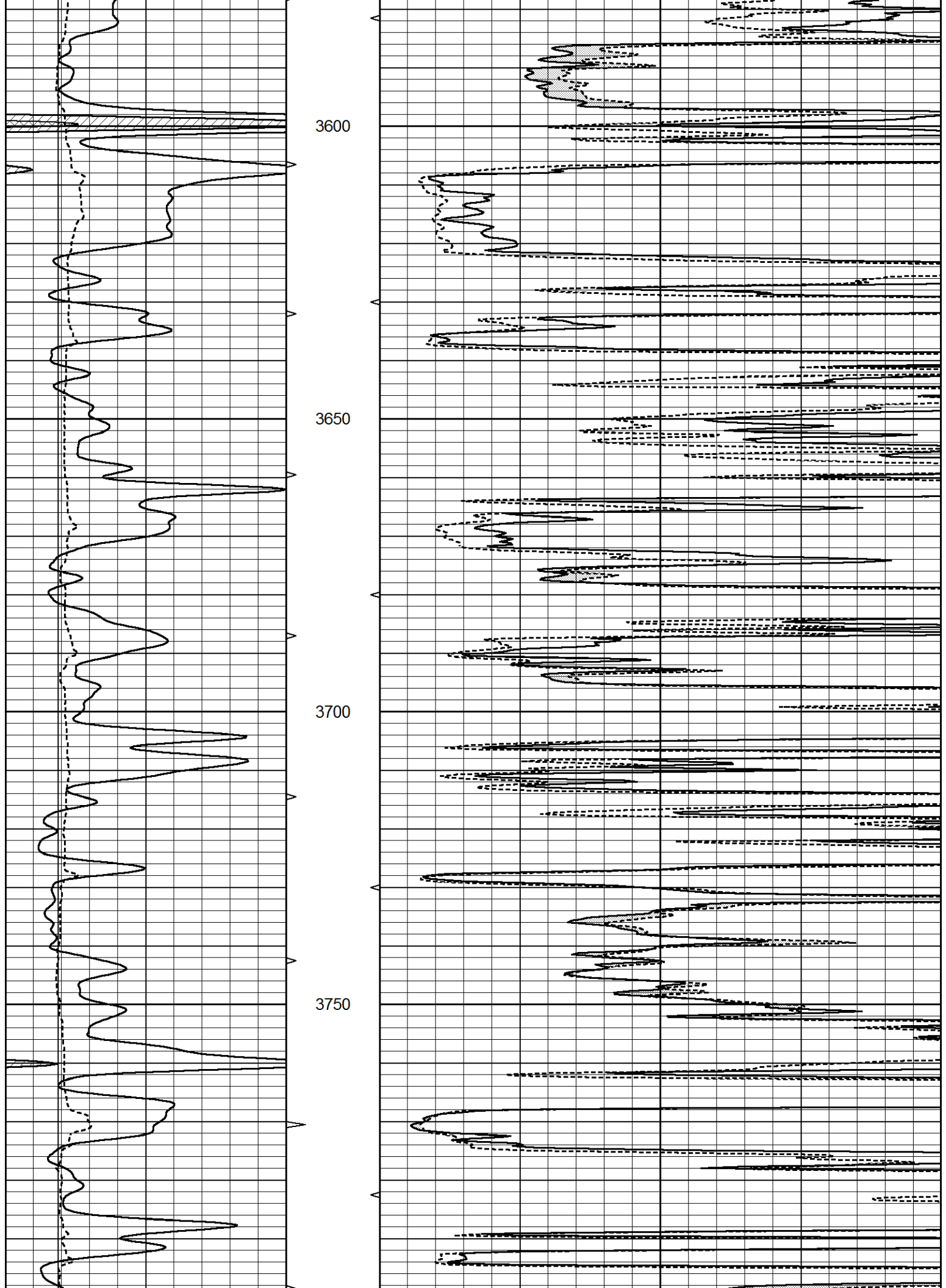


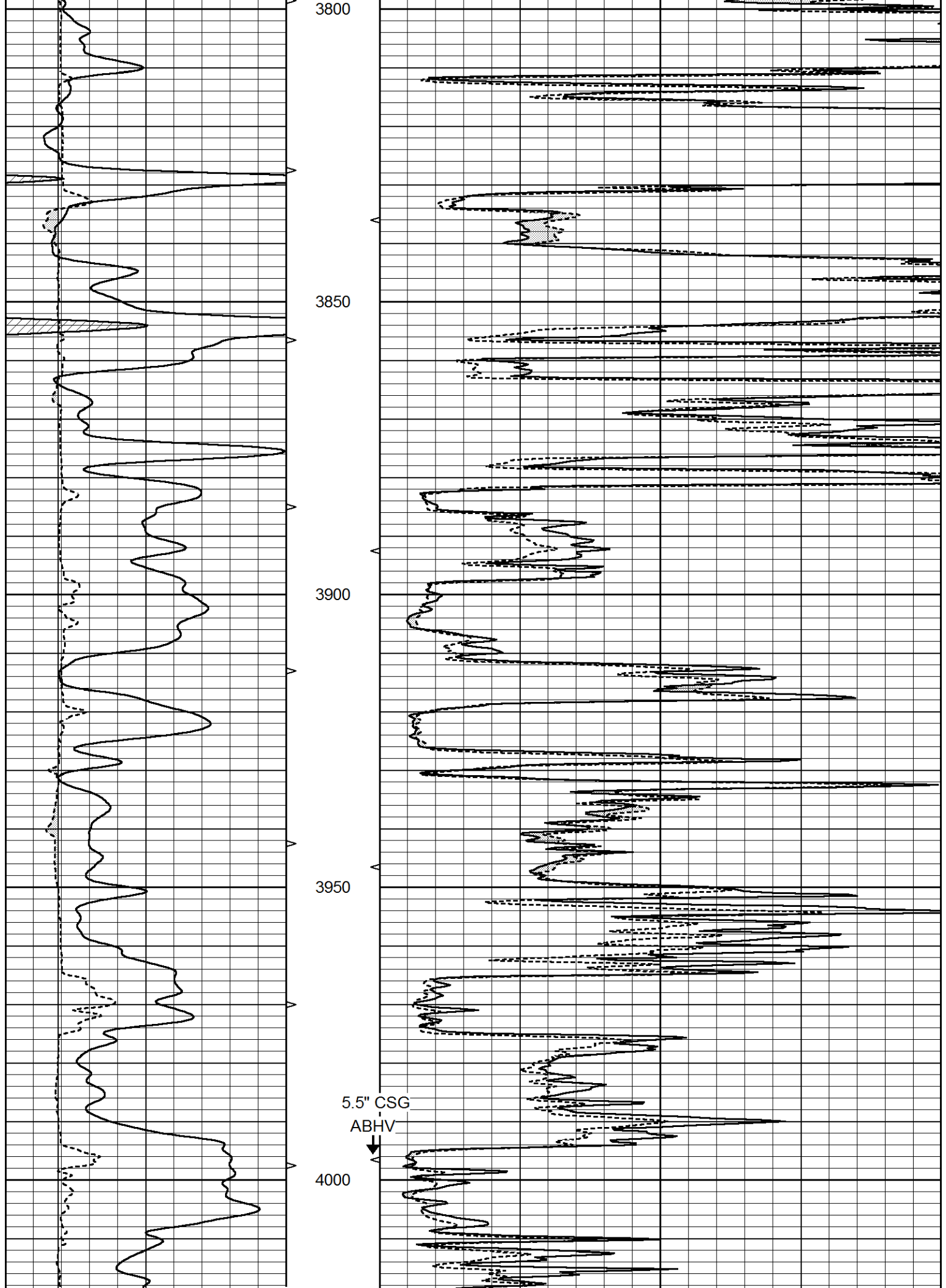
MAIN SECTION

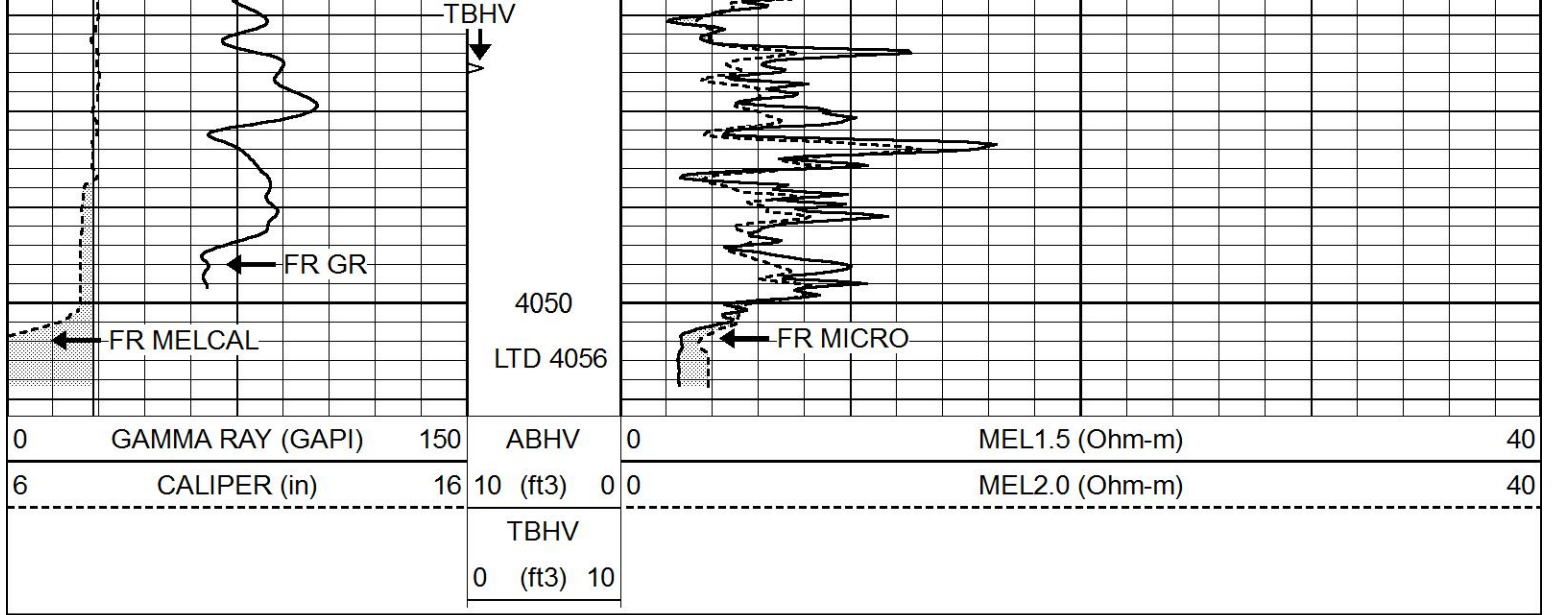
Database File 4736pe.db
 Dataset Pathname pass6.1
 Presentation Format _micro
 Dataset Creation Mon May 18 21:47:57 2020
 Charted by Depth in Feet scaled 1:240

0	GAMMA RAY (GAPI)	150	ABHV	0	MEL1.5 (Ohm-m)	40
6	CALIPER (in)	16	10 (ft3)	0	MEL2.0 (Ohm-m)	40
			TBHV			
			0 (ft3)	10		





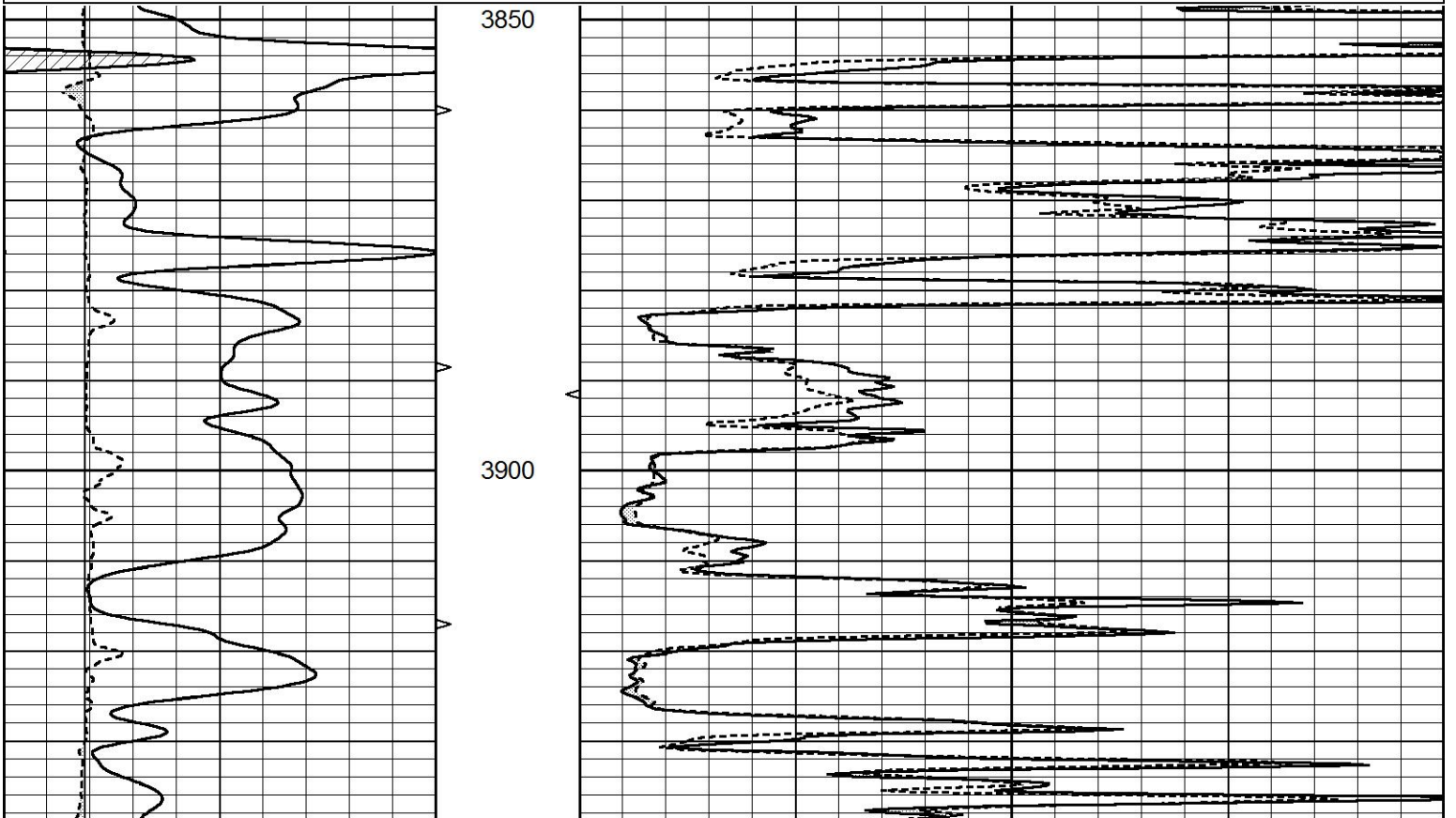


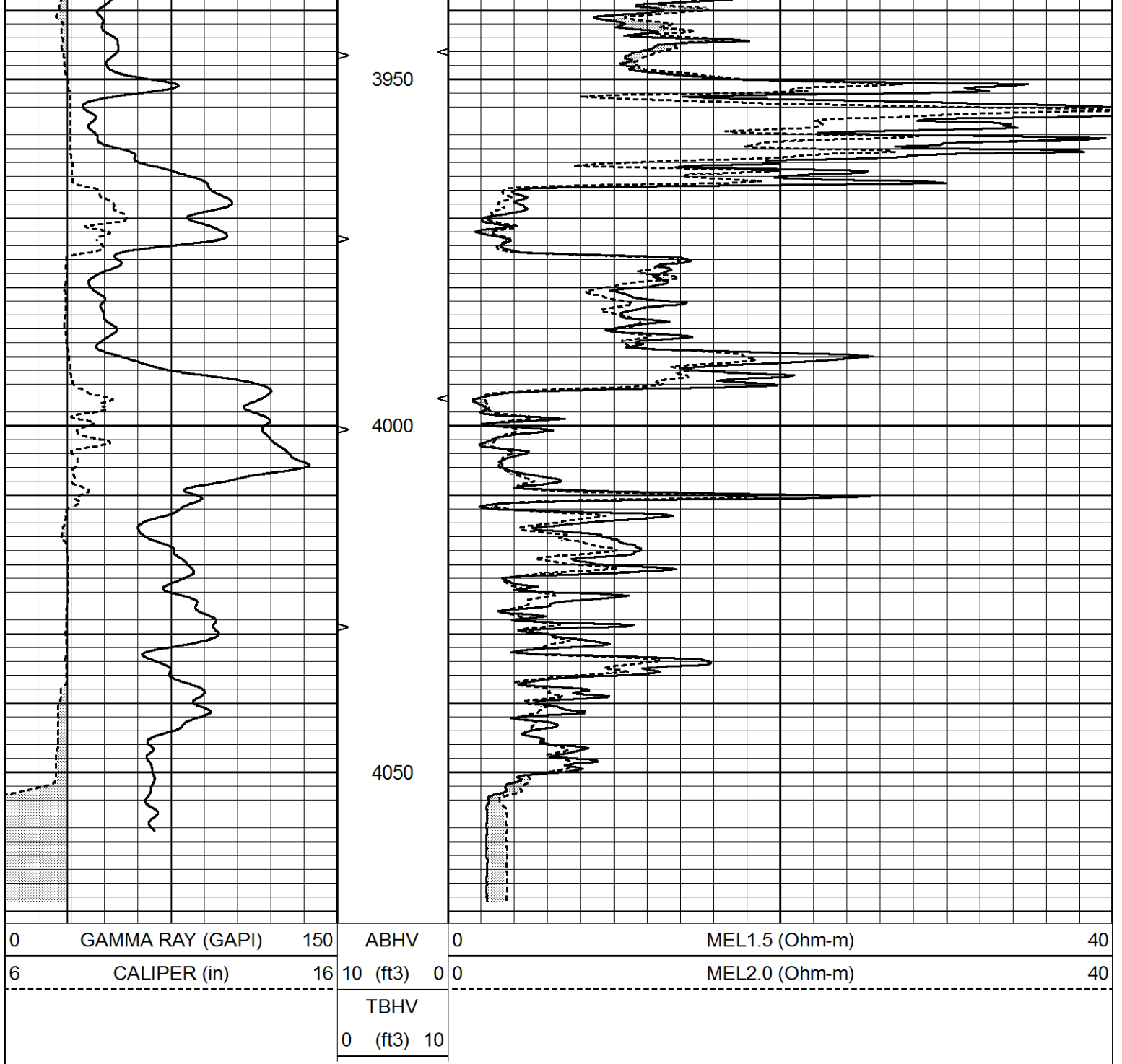


REPEAT SECTION

Database File 4736pe.db
 Dataset Pathname pass5.1
 Presentation Format _micro
 Dataset Creation Mon May 18 21:37:08 2020
 Charted by Depth in Feet scaled 1:240

0	GAMMA RAY (GAPI)	150	ABHV	0	MEL1.5 (Ohm-m)	40
6	CALIPER (in)	16	10 (ft3) 0	0	MEL2.0 (Ohm-m)	40
			TBHV			
			0 (ft3) 10			





Calibration Report

Database File 4736pe.db
 Dataset Pathname pass5.1
 Dataset Creation Mon May 18 21:37:08 2020

MICRO_USR Calibration Report

Serial Number: 070910
 Tool Model: Probel
 Performed: Mon Feb 24 07:51:20 2020

Caliper Calibration: Gain=7.282 Offset=3.087

References	Low Cal	High Cal
Readings	8.000	14.000
	0.647	1.471

1.5" Calibration: Gain=50.000 Offset=-0.567

References	Low Cal	High Cal
Readings	0.000	20.000
	0.004	1.335

2" Calibration: Gain=45.000 Offset=0.000

References	Low Cal	High Cal
Readings	0.000	20.000
	0.004	1.029

Microlog Calibration Report

Serial-Model: Performed:	070910-ProbeL (Not Performed)
-----------------------------	----------------------------------

	Readings			References			Results	
	Zero	Cal		Zero	Cal		m	b
Normal	0.0000	1.0000	V	0.0000	1.0000	Ohm-m	1.0000	0.0000
Inverse	0.0000	1.0000	V	0.0000	1.0000	Ohm-m	1.0000	0.0000
Caliper	0.0000	1.0000	V	0.0000	1.0000	in	1.0000	0.0000

Gamma Ray Calibration Report

Serial Number:	070558
Tool Model:	Probe1
Performed:	Mon Jan 21 19:38:56 2019
Calibrator Value:	1.0 GAPI
Background Reading:	0.0 cps
Calibrator Reading:	1.0 cps
Sensitivity:	0.2500 GAPI/cps