

MICRO  
LOG



Company ANCHOR BAY PETROLEUM, LLC.  
Well SIMPSON #2  
Field BRUNGARDT SOUTHWEST  
County ELLIS  
State KANSAS

Company ANCHOR BAY PETROLEUM, LLC.  
Well SIMPSON #2  
Field BRUNGARDT SOUTHWEST  
County ELLIS State KANSAS

Location: API #: 15-051-27026-0000  
1488' FSL & 391' FEL  
SW - SE - NE - SE  
SEC 3 TWP 11S RGE 17W  
Permanent Datum GROUND LEVEL Elevation 1878  
Log Measured From KELLY BUSHING 5' A.G.L.  
Drilling Measured From KELLY BUSHING  
Other Services  
CDL/CNL  
DIL  
Elevation  
K.B. 1883  
D.F. 1881  
G.L. 1878

Date	3/8/22		
Run Number	TWO		
Depth Driller	3505		
Depth Logger	3500		
Bottom Logged Interval	3498		
Top Log Interval	2600		
Casing Driller	8 5/8"@221'		
Casing Logger	221		
Bit Size	7 7/8"		
Type Fluid in Hole	CHEMICAL MUD	CHLORIDES 13,000 PPM	
Density / Viscosity	9.1/58		
pH / Fluid Loss	10.5/9.8		
Source of Sample	FLOWLINE		
Rm @ Meas. Temp	.600@60F		
Rmf @ Meas. Temp	.450@60F		
Rmc @ Meas. Temp	.720@60F		
Source of Rmf / Rmc	MEASUREMENT		
Rm @ BHT	.321@112F		
Time Circulation Stopped	4.5 HOURS		
Time Logger on Bottom	12:30 A.M.		
Maximum Recorded Temperature	112F		
Equipment Number	922339		
Location	HAYS, KANSAS		
Recorded By	JEFF LUEBBERS		
Witnessed By	ED GLASSMAN		

<<< Fold Here >>>

All interpretations are opinions based on inferences from electrical or other measurements and we cannot and do not guarantee the accuracy or correctness of any interpretation, and we shall not, except in the case of gross or willful negligence on our part, be liable or responsible for any loss, costs, damages, or expenses incurred or sustained by anyone resulting from any interpretation made by any of our officers, agents or employees. These interpretations are also subject to our general terms and conditions set out in our current Price Schedule.

15-051-27026-0000 Comments

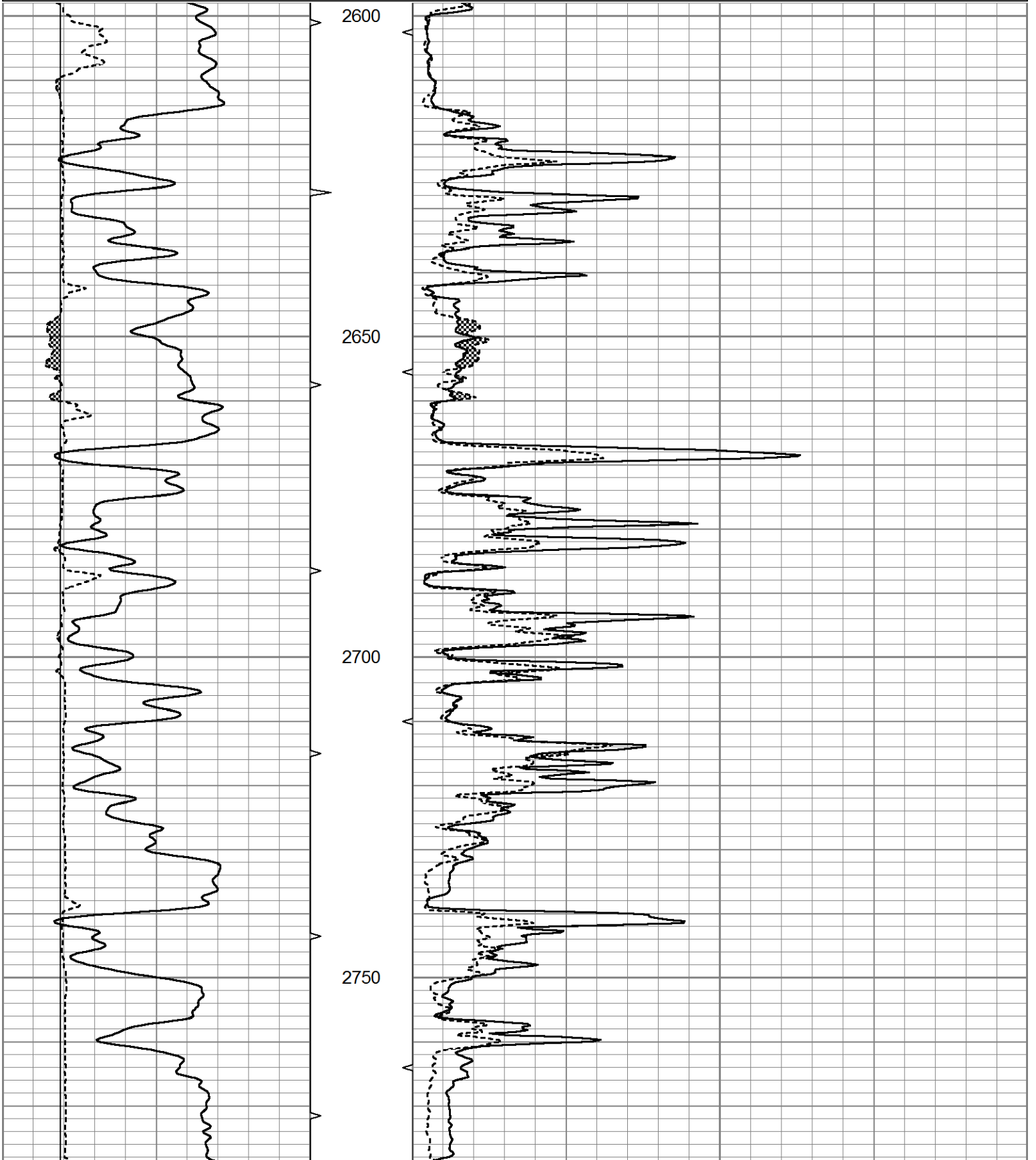
THANK YOU FOR USING ELI WIRELINE HAYS, KANSAS (785) 628-6395  
DIRECTIONS  
(CODELL & SALINE RIVER RD. JUNCTION) 1 1/4N., W. INTO

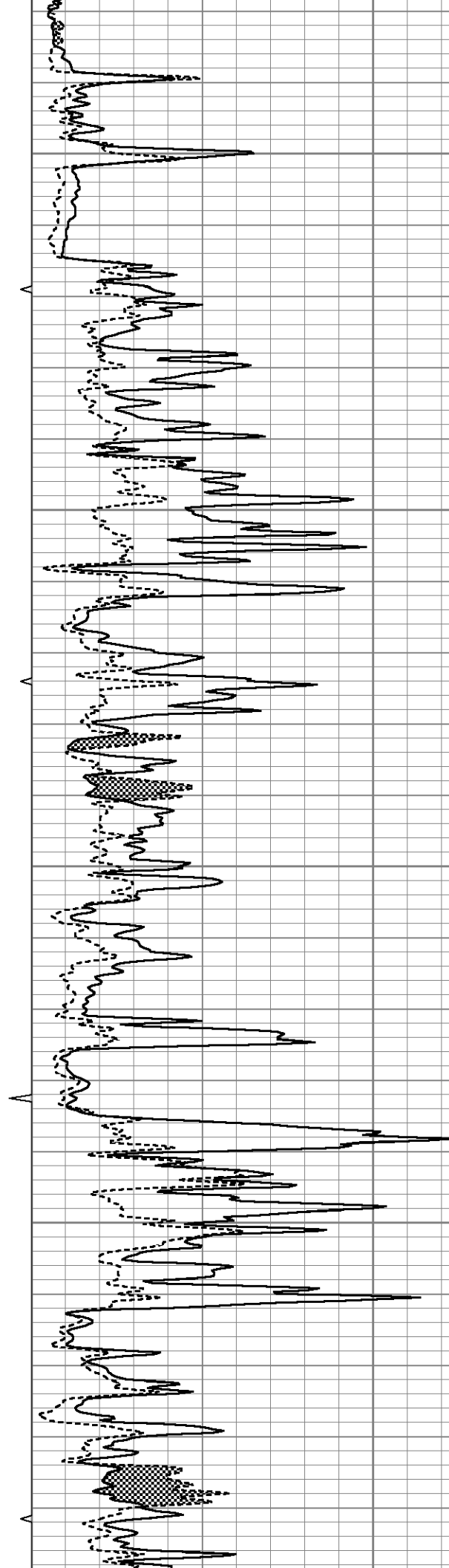
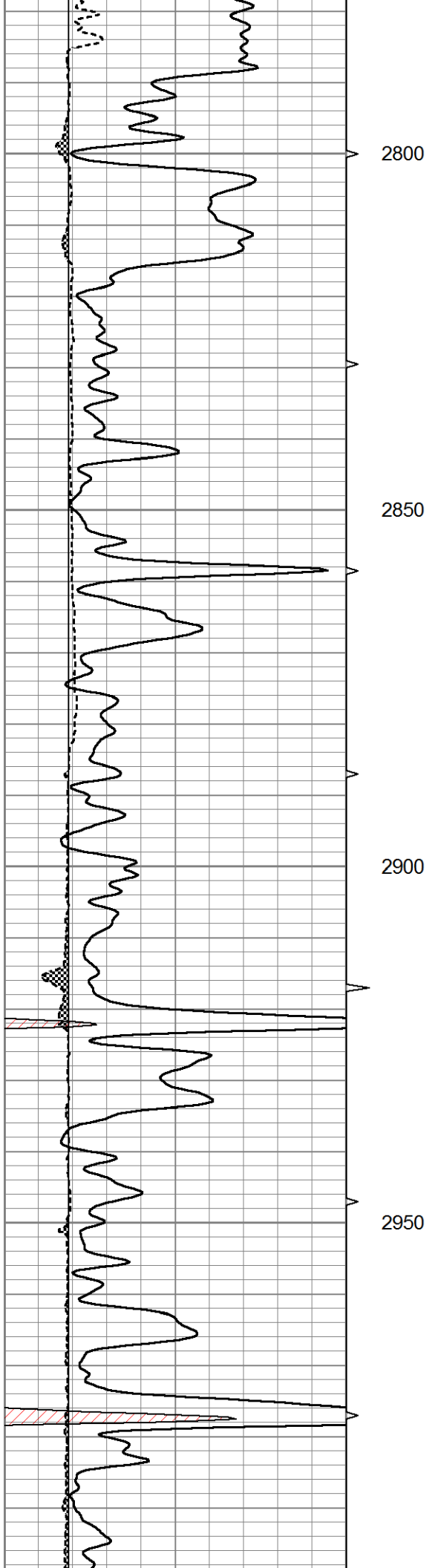


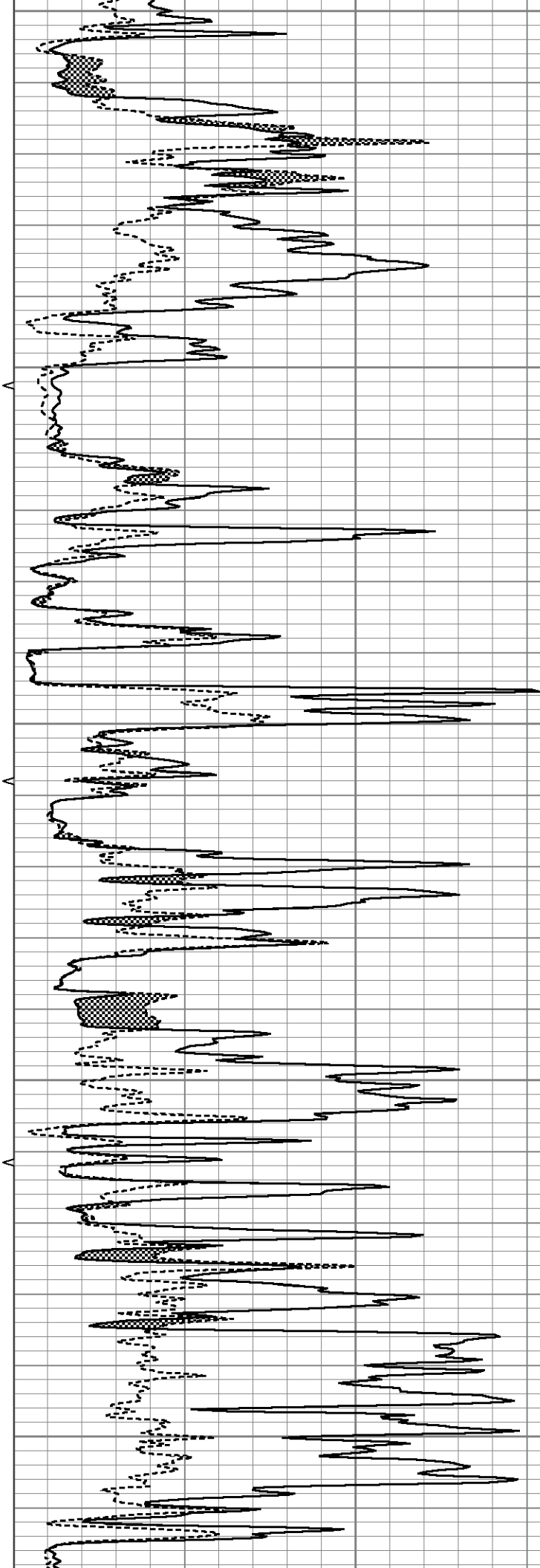
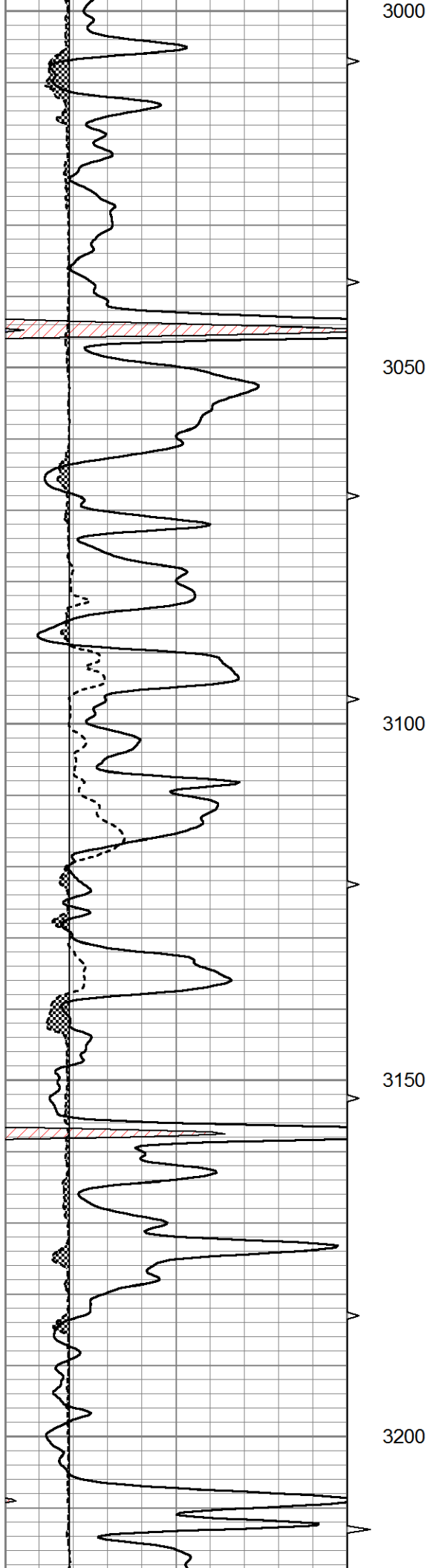
MAIN SECTION

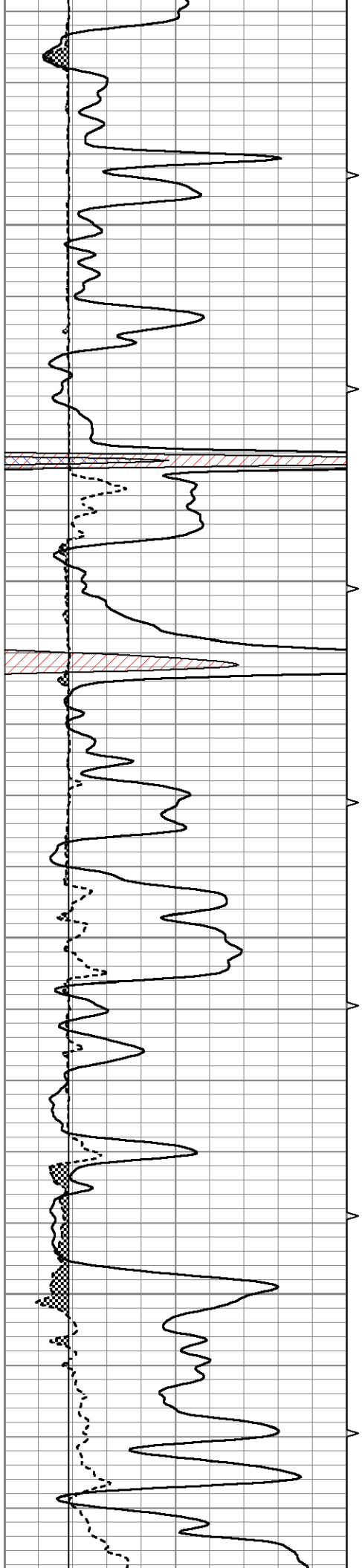
Database File 6258ddn.db  
 Dataset Pathname pass7.2M  
 Presentation Format micro  
 Dataset Creation Tue Mar 08 01:11:25 2022  
 Charted by Depth in Feet scaled 1:240

0	GR (GAPI)	150	ABHV	0	MEL20 (Ohm-m)	40
6	MELCAL (in)	16	10 (ft3)	0	MEL15 (Ohm-m)	40
			ABHV			
			0 (ft3)	10		









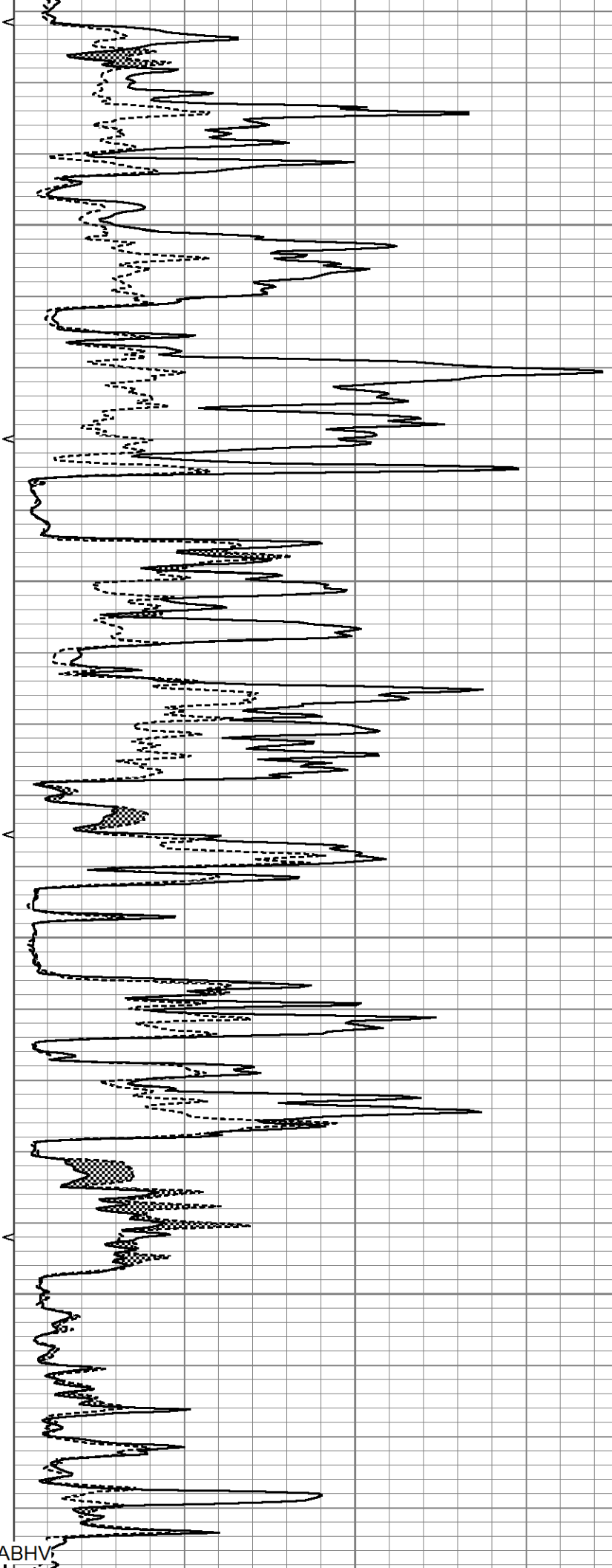
3250

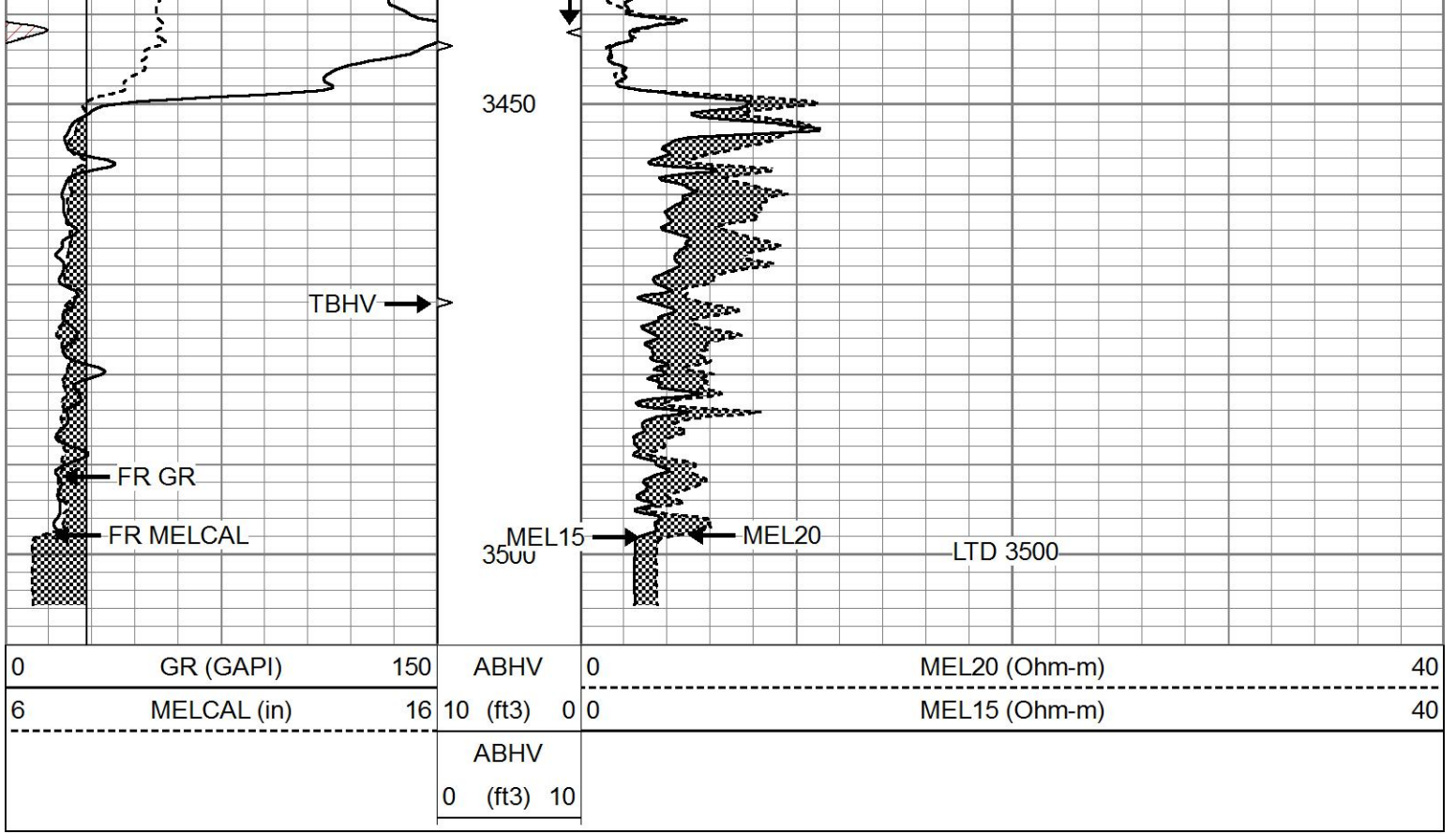
3300

3350

3400

5.5" ABHV

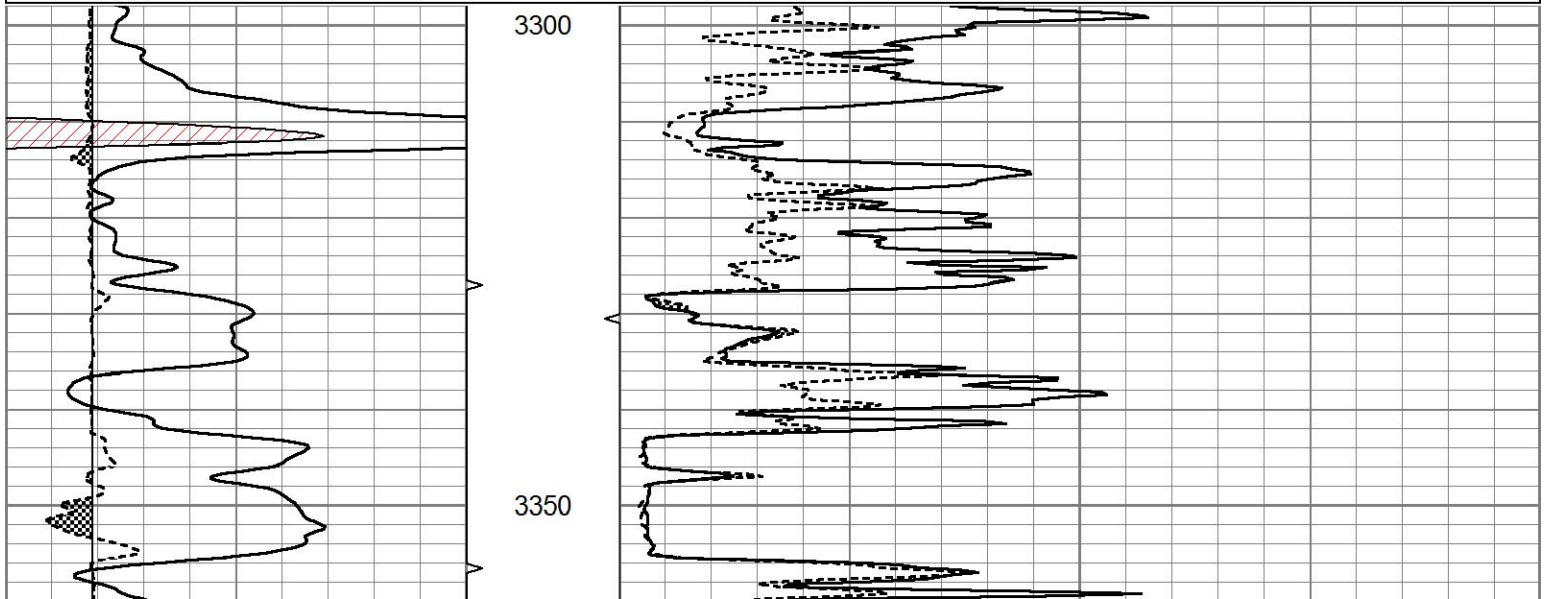


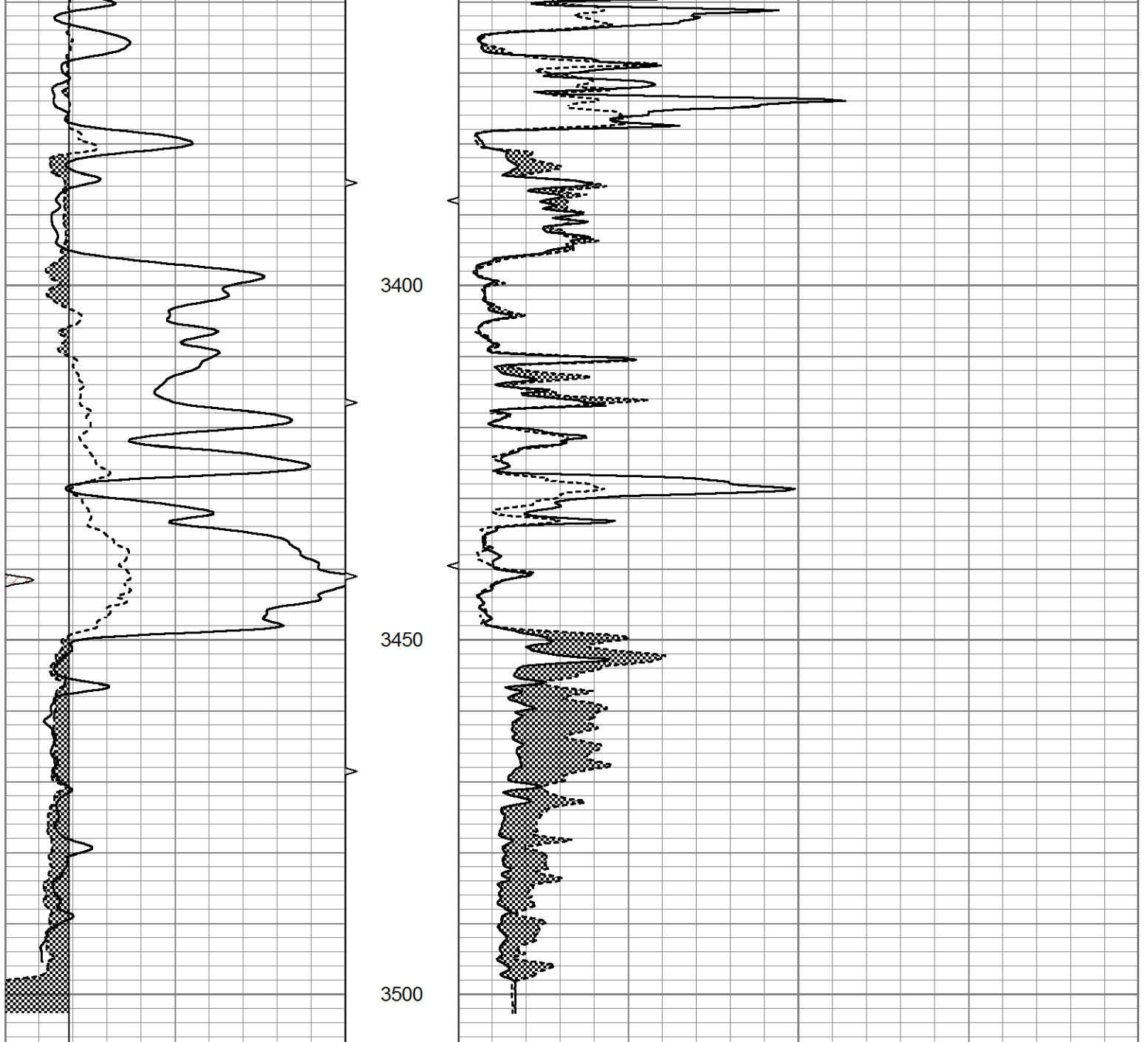


# REPEAT SECTION

Database File 6258ddn.db  
 Dataset Pathname pass6.1R  
 Presentation Format micro  
 Dataset Creation Tue Mar 08 01:14:05 2022  
 Charted by Depth in Feet scaled 1:240

0	GR (GAPI)	150	ABHV	0	MEL20 (Ohm-m)	40
6	MELCAL (in)	16	10 (ft3)	0 0	MEL15 (Ohm-m)	40
			ABHV			
			0 (ft3)	10		





0	GR (GAPI)	150	ABHV	0	MEL20 (Ohm-m)	40
6	MELCAL (in)	16	10 (ft3)	0	MEL15 (Ohm-m)	40
			ABHV			
			0 (ft3)	10		

### Calibration Report

Database File 6258ddn.db  
 Dataset Pathname pass7.2M  
 Dataset Creation Tue Mar 08 01:11:25 2022

### MICRO Calibration Report

Serial Number: 070910  
 Tool Model: ProbeN  
 Performed: Fri Jan 14 08:31:21 2022

Caliper Calibration: Gain=5.405 Offset=-0.216

Low Cal High Cal

References	8.000	16.000
Readings	1.520	3.000

1.5" Calibration:	Gain=12.000	Offset=0.300
References	Low Cal	High Cal
Readings	0.000	20.000
	0.000	1.216

2" Calibration:	Gain=45.000	Offset=-1.200
References	Low Cal	High Cal
Readings	0.000	20.000
	0.002	1.053

### Gamma Ray Calibration Report

Serial Number:	070558
Tool Model:	OPEN_GR
Performed:	Wed Mar 02 14:49:46 2022

Calibrator Value:	1.0	GAPI
-------------------	-----	------

Background Reading:	0.0	cps
Calibrator Reading:	1.0	cps

Sensitivity:	0.2800	GAPI/cps
--------------	--------	----------