



**COMPENSATED
DENSITY / NEUTRON
LOG**

Company ANCHOR BAY PETROLEUM, LLC.
Well SIMPSON #2
Field BRUNGARDT SOUTHWEST
County ELLIS
State KANSAS

Company ANCHOR BAY PETROLEUM, LLC.
Well SIMPSON #2
Field BRUNGARDT SOUTHWEST
County ELLIS State KANSAS

Location: API #: 15-051-27026-0000
1488' FSL & 391' FEL
SW - SE - NE - SE
SEC 3 TWP 11S RGE 17W
Permanent Datum GROUND LEVEL Elevation 1878
Log Measured From KELLY BUSHING 5' A.G.L.
Drilling Measured From KELLY BUSHING
Other Services DILMEL
Elevation
K.B. 1883
D.F. 1881
G.L. 1878

Date	3/7/22
Run Number	ONE
Depth Driller	3505
Depth Logger	3500
Bottom Logged Interval	3476
Top Log Interval	2600
Casing Driller	8 5/8"@221'
Casing Logger	221
Bit Size	7 7/8"
Type Fluid in Hole	CHEMICAL MUD
Density / Viscosity	9.1/58
pH / Fluid Loss	10.5/9.8
Source of Sample	FLOWLINE
Rm @ Meas. Temp	.600@60F
Rmf @ Meas. Temp	.450@60F
Rmc @ Meas. Temp	.720@60F
Source of Rmf / Rmc	MEASUREMENT
Rm @ BHT	.321@112F
Time Circulation Stopped	3 HOURS
Time Logger on Bottom	10:45 P.M.
Maximum Recorded Temperature	112F
Equipment Number	922339
Location	HAYS, KANSAS
Recorded By	JEFF LUEBBERS
Witnessed By	ED GLASSMAN

<<< Fold Here >>>

All interpretations are opinions based on inferences from electrical or other measurements and we cannot and do not guarantee the accuracy or correctness of any interpretation, and we shall not, except in the case of gross or willful negligence on our part, be liable or responsible for any loss, costs, damages, or expenses incurred or sustained by anyone resulting from any interpretation made by any of our officers, agents or employees. These interpretations are also subject to our general terms and conditions set out in our current Price Schedule.

15-051-27026-0000 Comments

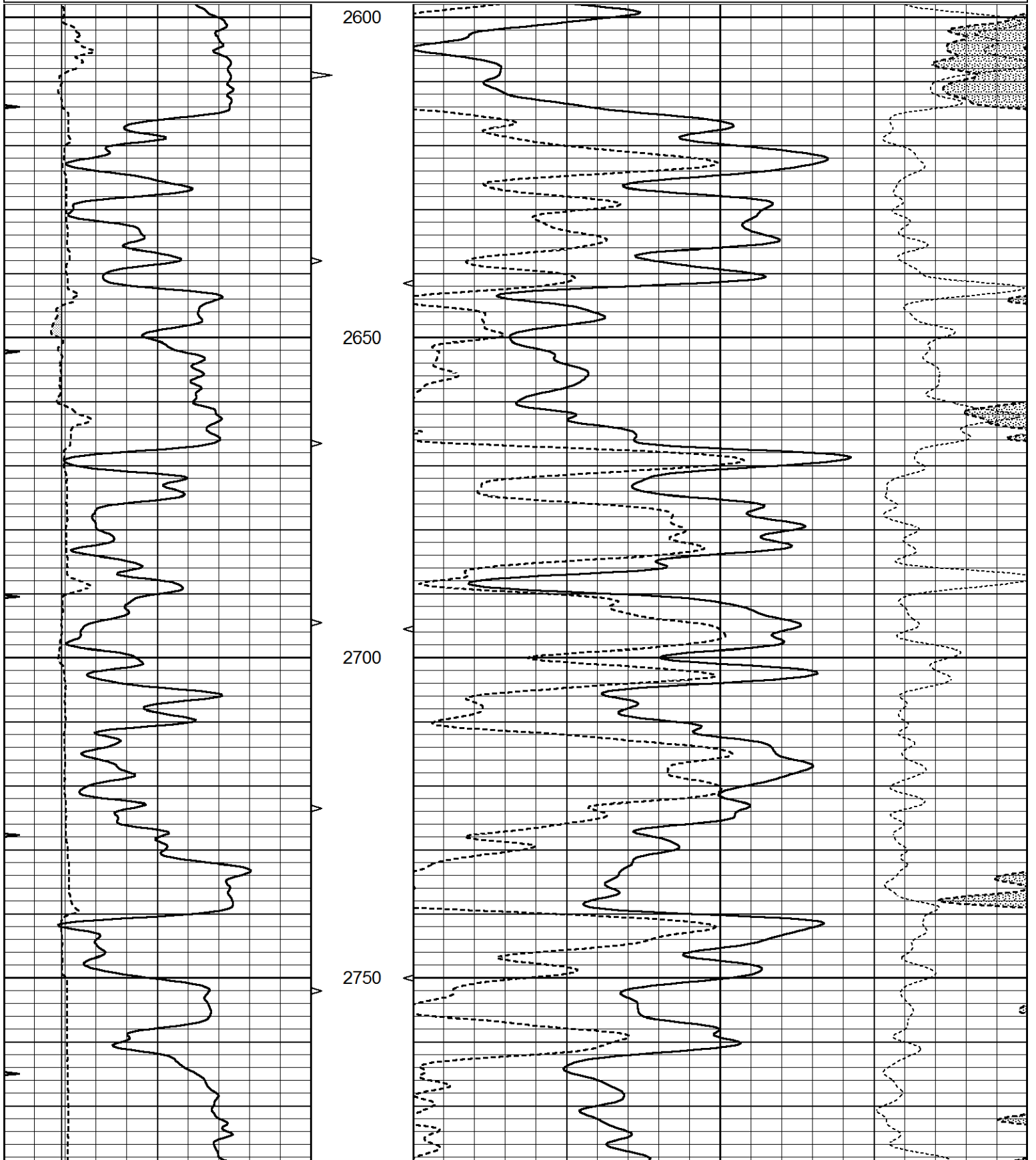
THANK YOU FOR USING ELI WIRELINE HAYS, KANSAS (785) 628-6395
DIRECTIONS
(CODELL & SALINE RIVER RD. JUNCTION) 1 1/4N., W. INTO

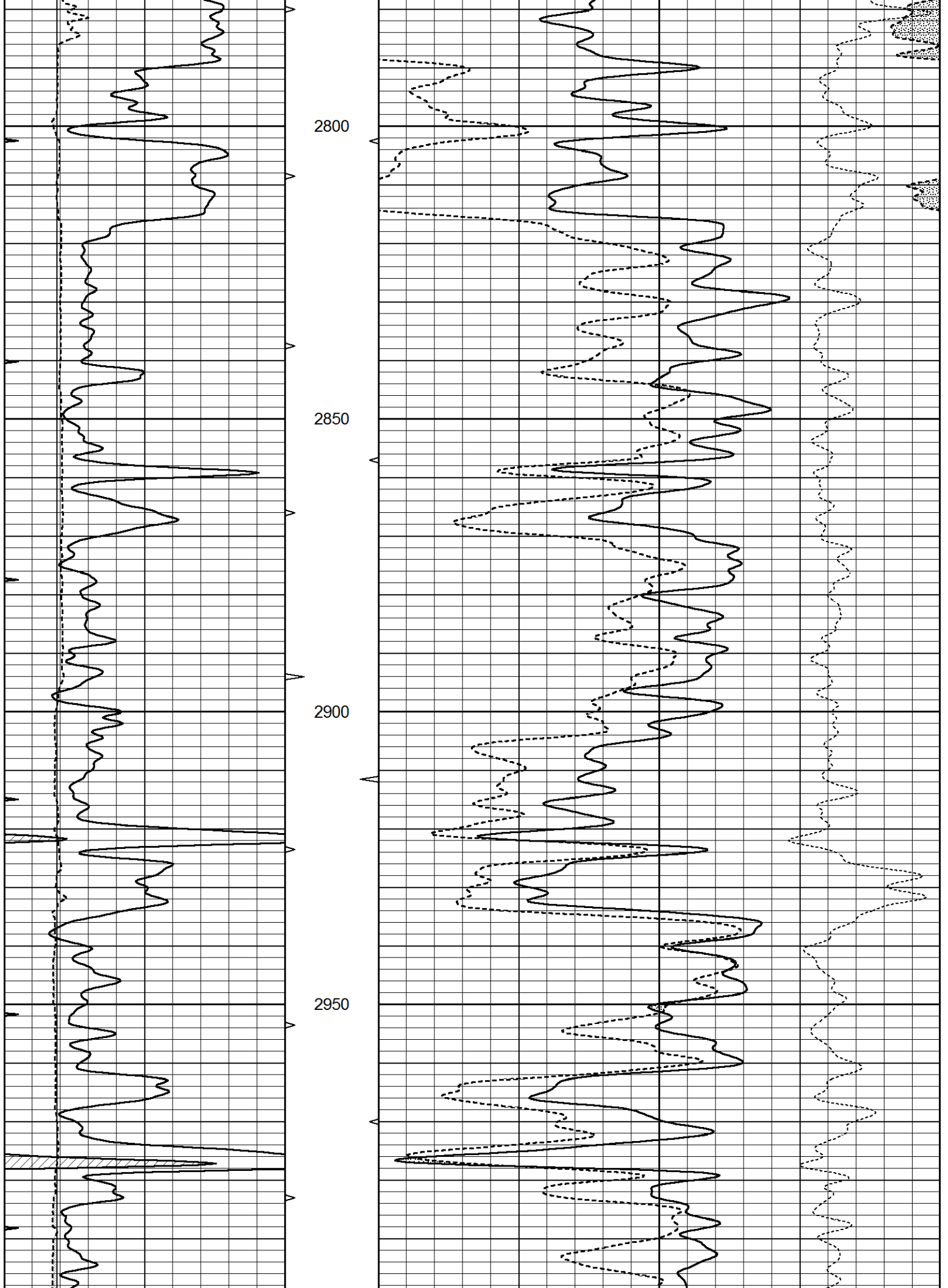


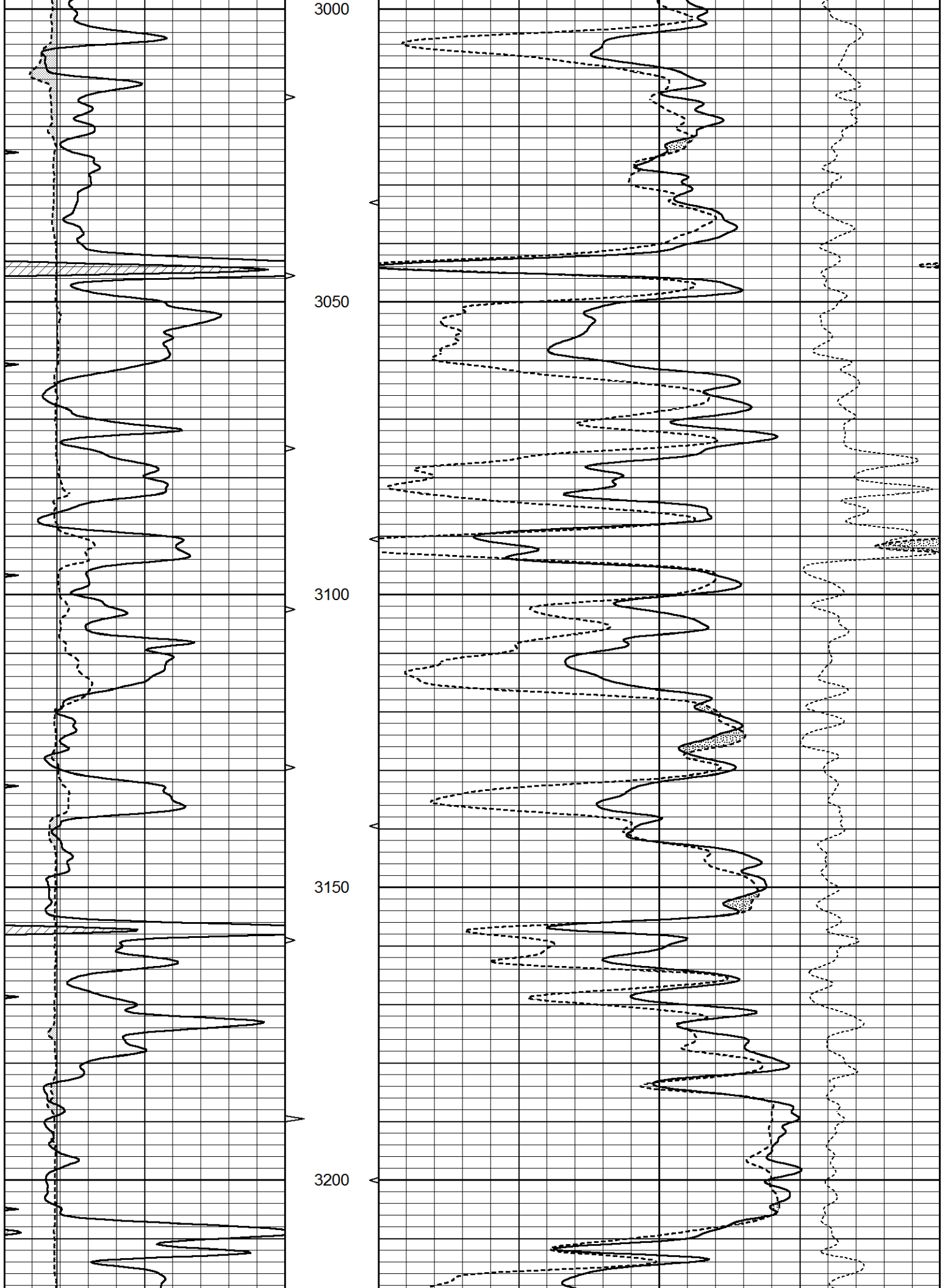
MAIN SECTION

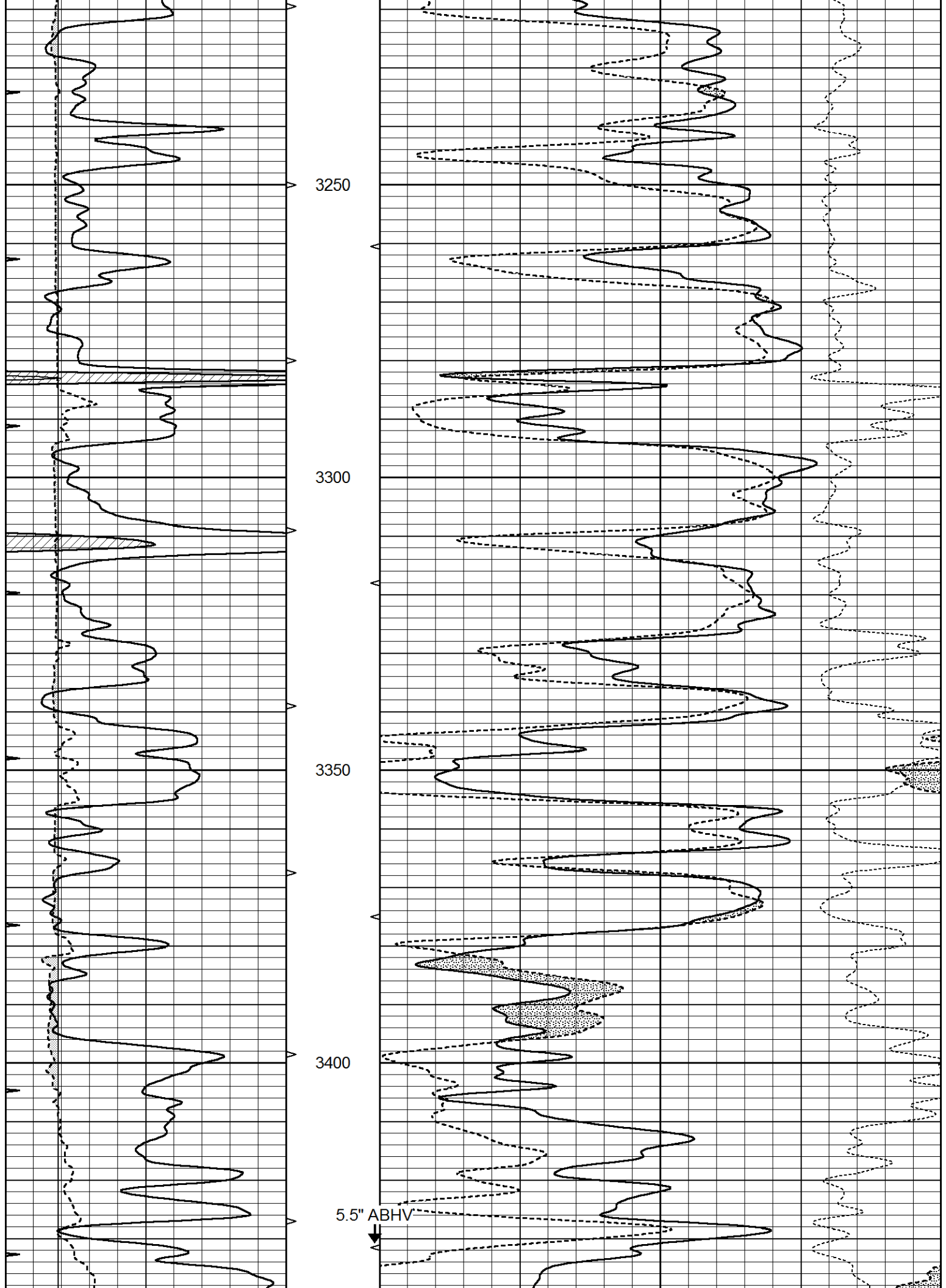
Database File 6258ddn.db
 Dataset Pathname pass4.1M
 Presentation Format den_neu
 Dataset Creation Mon Mar 07 23:56:23 2022
 Charted by Depth in Feet scaled 1:240

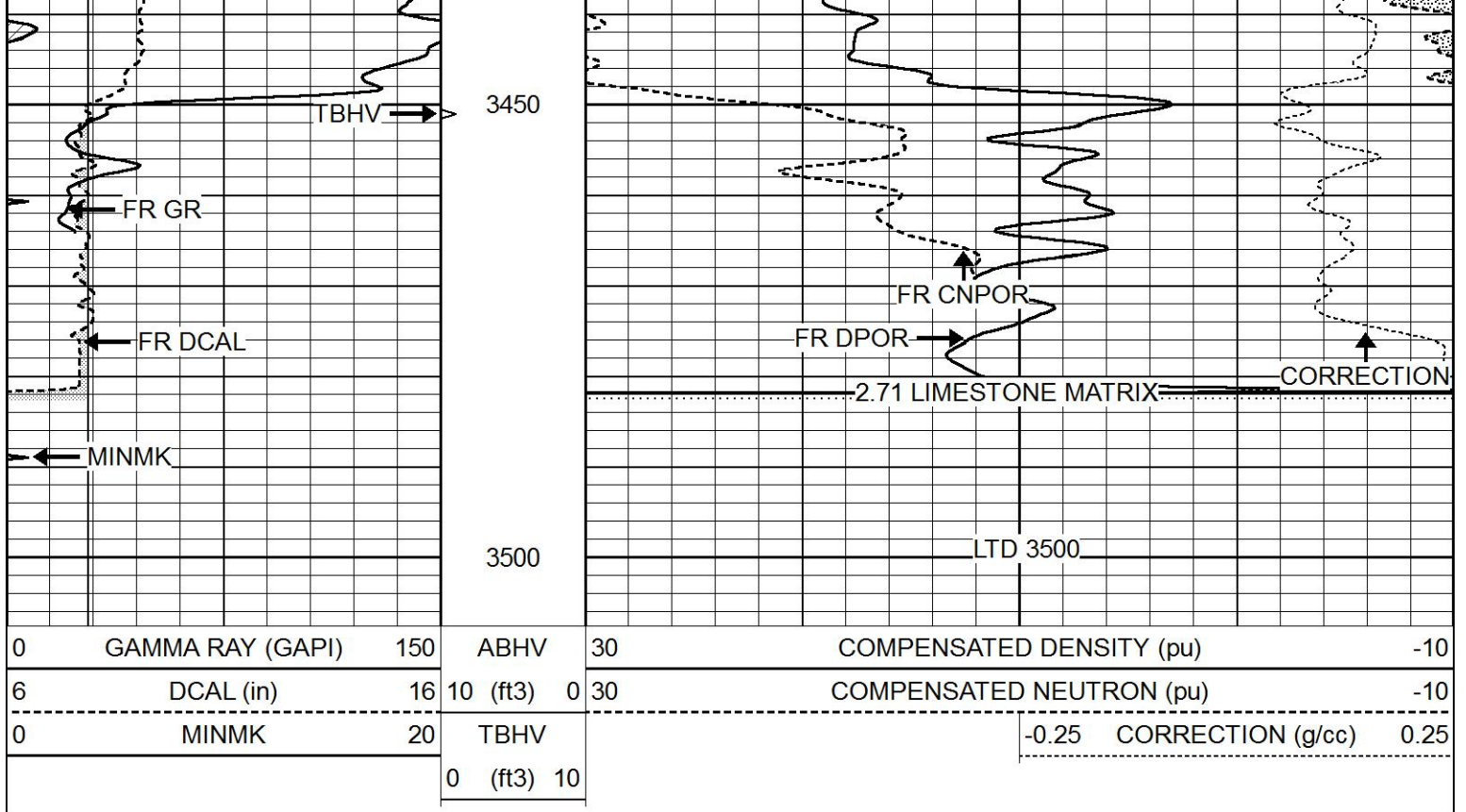
0	GAMMA RAY (GAPI)	150	ABHV	30	COMPENSATED DENSITY (pu)	-10	
6	DCAL (in)	16	10 (ft3)	0	30	COMPENSATED NEUTRON (pu)	-10
0	MINMK	20	TBHV			-0.25 CORRECTION (g/cc)	0.25
			0 (ft3)	10			







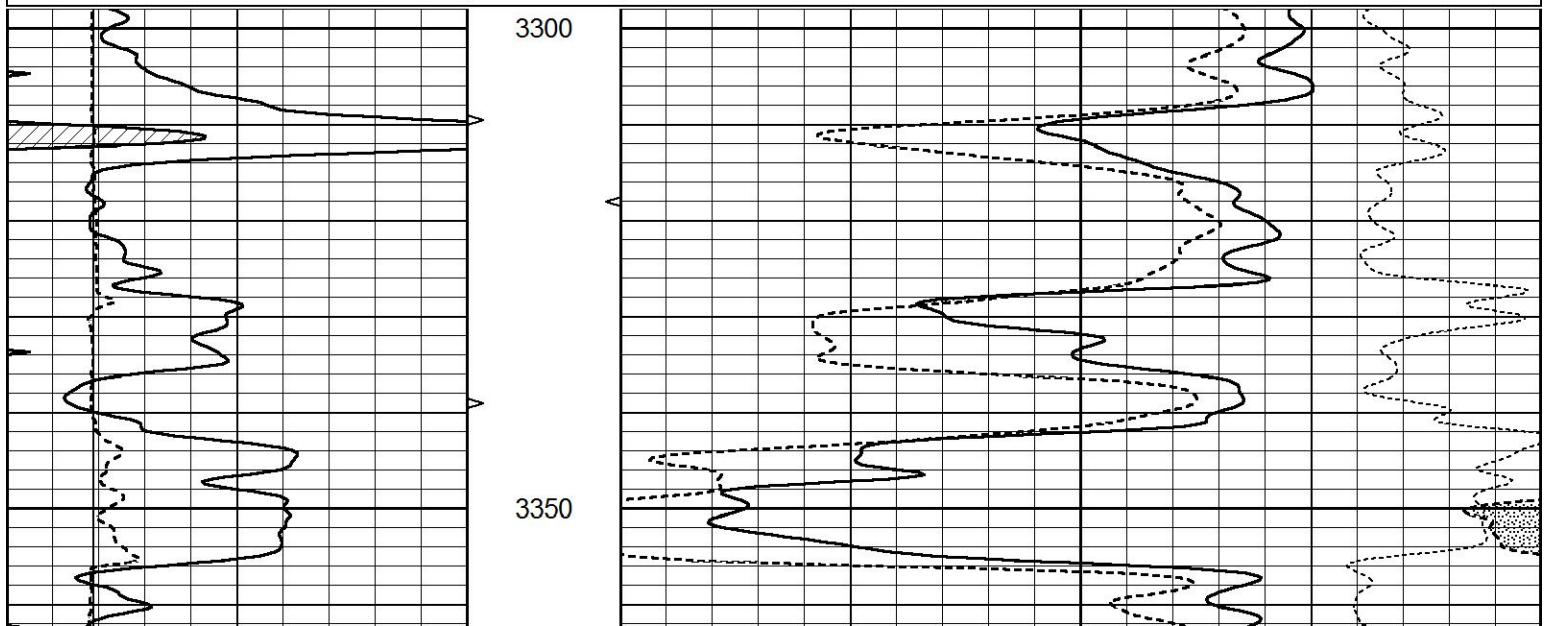


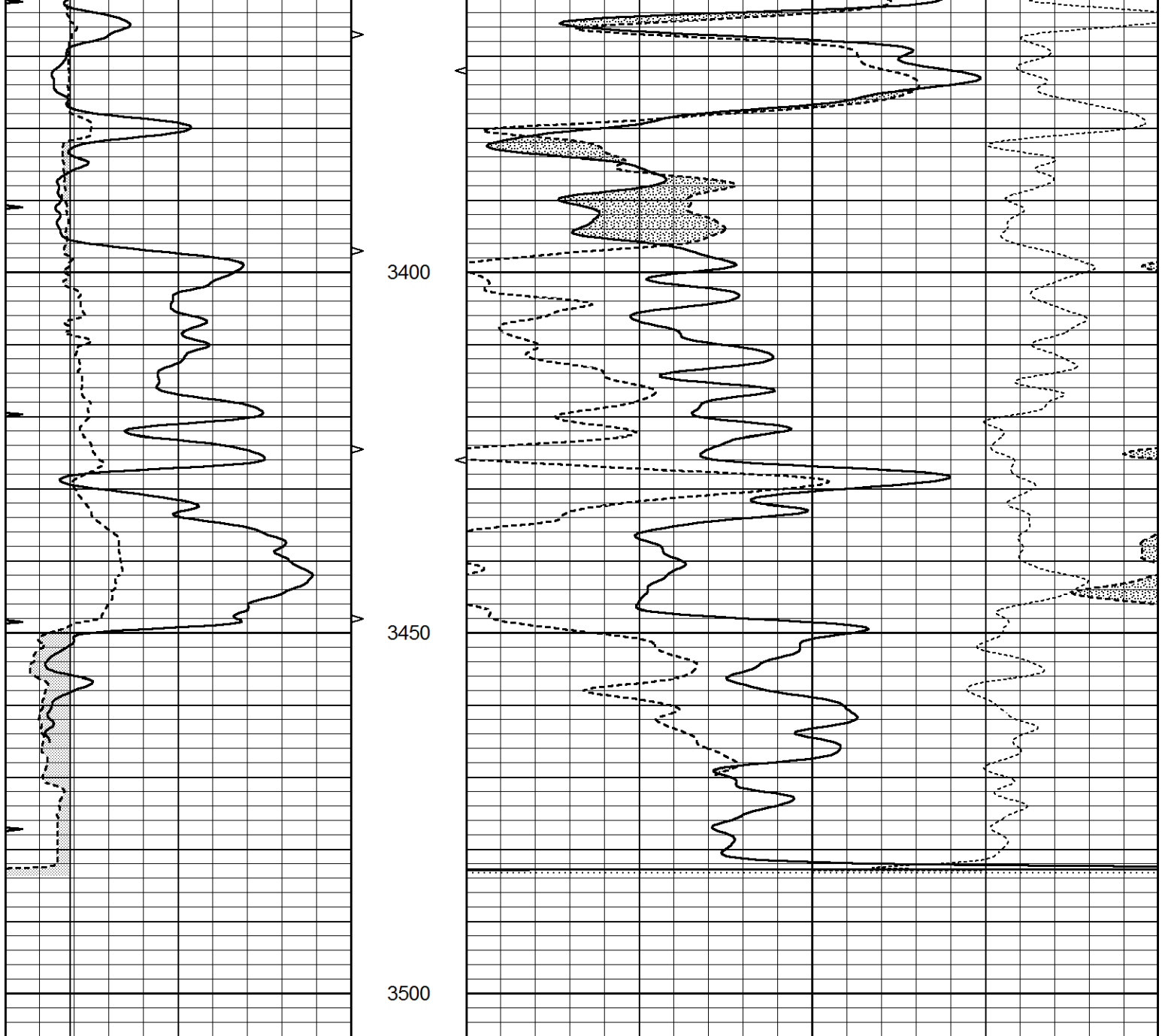


REPEAT SECTION

Database File 6258ddn.db
 Dataset Pathname pass3.2R
 Presentation Format den_neu
 Dataset Creation Tue Mar 08 00:08:30 2022
 Charted by Depth in Feet scaled 1:240

0	GAMMA RAY (GAPI)	150	ABHV	30	COMPENSATED DENSITY (pu)	-10
6	DCAL (in)	16	10 (ft3)	0 30	COMPENSATED NEUTRON (pu)	-10
0	MINMK	20	TBHV		-0.25 CORRECTION (g/cc)	0.25
			0 (ft3)	10		





0	GAMMA RAY (GAPI)	150	ABHV	30	COMPENSATED DENSITY (pu)	-10
6	DCAL (in)	16	10 (ft3)	0 30	COMPENSATED NEUTRON (pu)	-10
0	MINMK	20	TBHV		-0.25 CORRECTION (g/cc)	0.25
			0 (ft3)	10		

Calibration Report

Database File 6258ddn.db
 Dataset Pathname pass4.1M
 Dataset Creation Mon Mar 07 23:56:23 2022

Dual Induction Calibration Report

Serial-Model: PROBE9-DILG
 Surface Cal Performed: Sun Mar 06 18:45:31 2022
 Downhole Cal Performed: Wed Mar 11 11:31:19 2020
 After Survey Verification Performed: Wed Mar 11 11:31:22 2020

Surface Calibration

Readings

References

Results

Loop:	Air	Loop		Air	Loop		m	b
Deep	-0.014	0.629	V	0.000	400.000	mmho/m	720.000	-15.000
Medium	0.039	0.728	V	0.000	464.000	mmho/m	720.000	-24.000
Internal:	Zero	Cal		Zero	Cal		m	b
Deep	0.011	0.610	V	0.000	400.000	mmho/m	667.135	-7.256
Medium	0.005	0.712	V	0.000	464.000	mmho/m	655.677	-3.102

Downhole Calibration								
	Readings			References			Results	
	Zero	Cal		Zero	Cal		m'	b'
Deep	0.000	0.000	mmho/m	14.508	388.384	mmho/m	1.000	0.000
Medium	0.000	0.000	mmho/m	166.367	504.400	mmho/m	1.000	0.000
LL3		7.500	V		1400.000	Ohm-m		
		0.000	V		20.000	Ohm-m		
		-7.200	V		4000.000	mmho-m		

After Survey Verification								
	Readings			Targets			Results	
	Zero	Cal		Zero	Cal		m'	b'
Deep	0.000	0.000	mmho/m	0.000	0.000	mmho/m	0.000	0.000
Medium	0.000	0.000	mmho/m	0.000	0.000	mmho/m	0.000	0.000
LL3		1.000	Ohm-m		1.000	Ohm-m		
		0.000	Ohm-m		0.000	Ohm-m		
		1.000	mmho-m		1.000	mmho-m		

Litho Density Calibration Report
Serial: 004 Model: PRB

Master Calibration					Performed Tue May 18 11:02:48 2021			
	Background		Magnesium		Aluminum		Aluminum+Fe	
Window 1	1187.1		10004.0		3142.5		2810.8	cps
Window 2	1084.9		8556.6		2749.3		2502.4	cps
Window 3	923.1		5129.8		1819.8		1719.3	cps
Window 4	263.5		263.6		259.7		262.8	cps
Long Space	0.0		7471.7		1664.4		1417.5	cps
Short Space	1.5		984.9		645.6		561.2	cps
Rho			1.7100		2.5900		0.0000	g/cc
Pe			2.0000		2.7500		5.7900	
Rib Angle	: 44.3		Rib Slope	: 0.976	Density/Spine Ratio		: 0.564	
Spine Angle	: 74.3		Spine Slope	: 3.555	Spine Intercept		: -15.6	

Before Survey Verification					Performed Wed Dec 31 18:00:00 1969			
Window 1	0.0		0.0		0.0		0.0	cps
Window 2	0.0		0.0		0.0		0.0	cps
Window 3	0.0		0.0		0.0		0.0	cps
Window 4	0.0		0.0		0.0		0.0	cps
Long Space	0.0		0.0		0.0		0.0	cps
Short Space	0.0		0.0		0.0		0.0	cps
Measured Rho			0.0000		0.0000		0.0000	g/cc
Measured Correction			0.0000		0.0000		0.0000	g/cc
Measured Pe					0.0000		0.0000	

After Survey Verification					Performed Wed Dec 31 18:00:00 1969			
---------------------------	--	--	--	--	------------------------------------	--	--	--

Window 1	0.0	0.0	0.0	0.0	cps
Window 2	0.0	0.0	0.0	0.0	cps
Window 3	0.0	0.0	0.0	0.0	cps
Window 4	0.0	0.0	0.0	0.0	cps
Long Space	0.0	0.0	0.0	0.0	cps
Short Space	0.0	0.0	0.0	0.0	cps
Measured Rho		0.0000	0.0000	0.0000	g/cc
Measured Correction		0.0000	0.0000	0.0000	g/cc
Measured Pe			0.0000	0.0000	

Compensated Neutron Calibration Report

Serial Number: 070808PMC
Tool Model: NABORS

PRE-SURVEY VERIFICATION

Detector	Readings	Measured	Target
Short Space	cps		
Long Space	cps	pu	pu

POST-SURVEY VERIFICATION

Detector	Readings	Measured	Target
Short Space	cps		
Long Space	cps	pu	pu

Gamma Ray Calibration Report

Serial Number: 070558
Tool Model: OPEN_GR
Performed: Wed Mar 02 14:49:46 2022

Calibrator Value: 1.0 GAPI

Background Reading: 0.0 cps
Calibrator Reading: 1.0 cps

Sensitivity: 0.2800 GAPI/cps