



DUAL INDUCTION LOG

Company ANCHOR BAY PETROLEUM, LLC.
Well SIMPSON #2
Field BRUNGARDT SOUTHWEST
County ELLIS
State KANSAS

Company ANCHOR BAY PETROLEUM, LLC.
Well SIMPSON #2
Field BRUNGARDT SOUTHWEST
County ELLIS State KANSAS

Location: API #: 15-051-27026-0000
1488' FSL & 391' FEL
SW - SE - NE - SE
SEC 3 TWP 11S RGE 17W
Permanent Datum GROUND LEVEL Elevation 1878
Log Measured From KELLY BUSHING 5' A.G.L.
Drilling Measured From KELLY BUSHING
Other Services CDL/CNL MEL
Elevation K.B: 1883 D.F: 1881 G.L: 1878

Table with columns: Date, Run Number, Depth Driller, Depth Logger, Bottom Logged Interval, Top Log Interval, Casing Driller, Casing Logger, Bit Size, Type Fluid in Hole, Density / Viscosity, pH / Fluid Loss, Source of Sample, Rm @ Meas. Temp, Rmf @ Meas. Temp, Rmc @ Meas. Temp, Source of Rmf / Rmc, Rm @ BHT, Time Circulation Stopped, Time Logger on Bottom, Maximum Recorded Temperature, Equipment Number, Location, Recorded By, Witnessed By.

<<< Fold Here >>>

All interpretations are opinions based on inferences from electrical or other measurements and we cannot and do not guarantee the accuracy or correctness of any interpretation, and we shall not, except in the case of gross or willful negligence on our part, be liable or responsible for any loss, costs, damages, or expenses incurred or sustained by anyone resulting from any interpretation made by any of our officers, agents or employees. These interpretations are also subject to our general terms and conditions set out in our current Price Schedule.

15-051-27026-0000 Comments

THANK YOU FOR USING ELI WIRELINE HAYS, KANSAS (785) 628-6395
DIRECTIONS
(CODELL & SALINE RIVER RD. JUNCTION) 1 1/4N., W. INTO

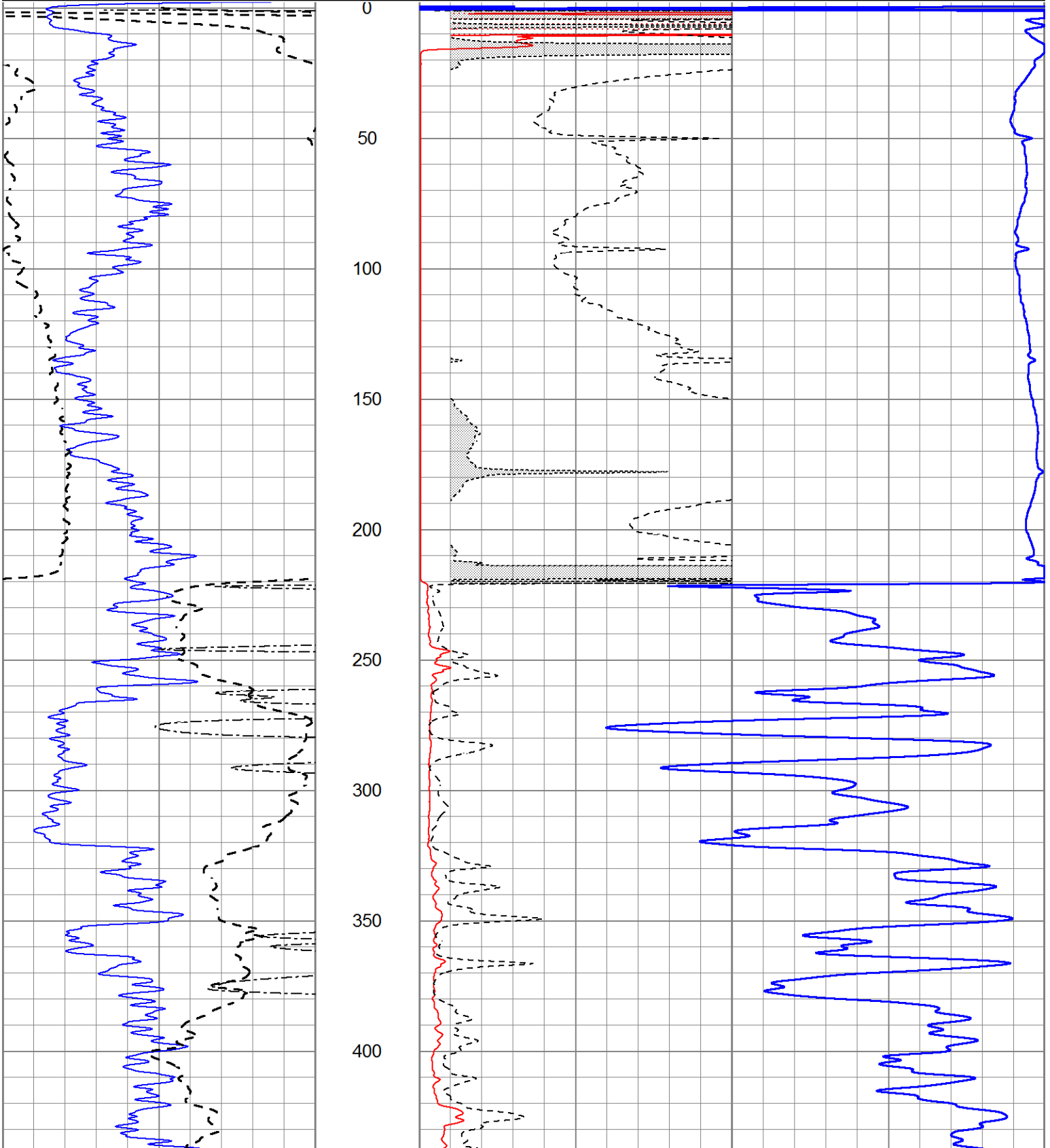


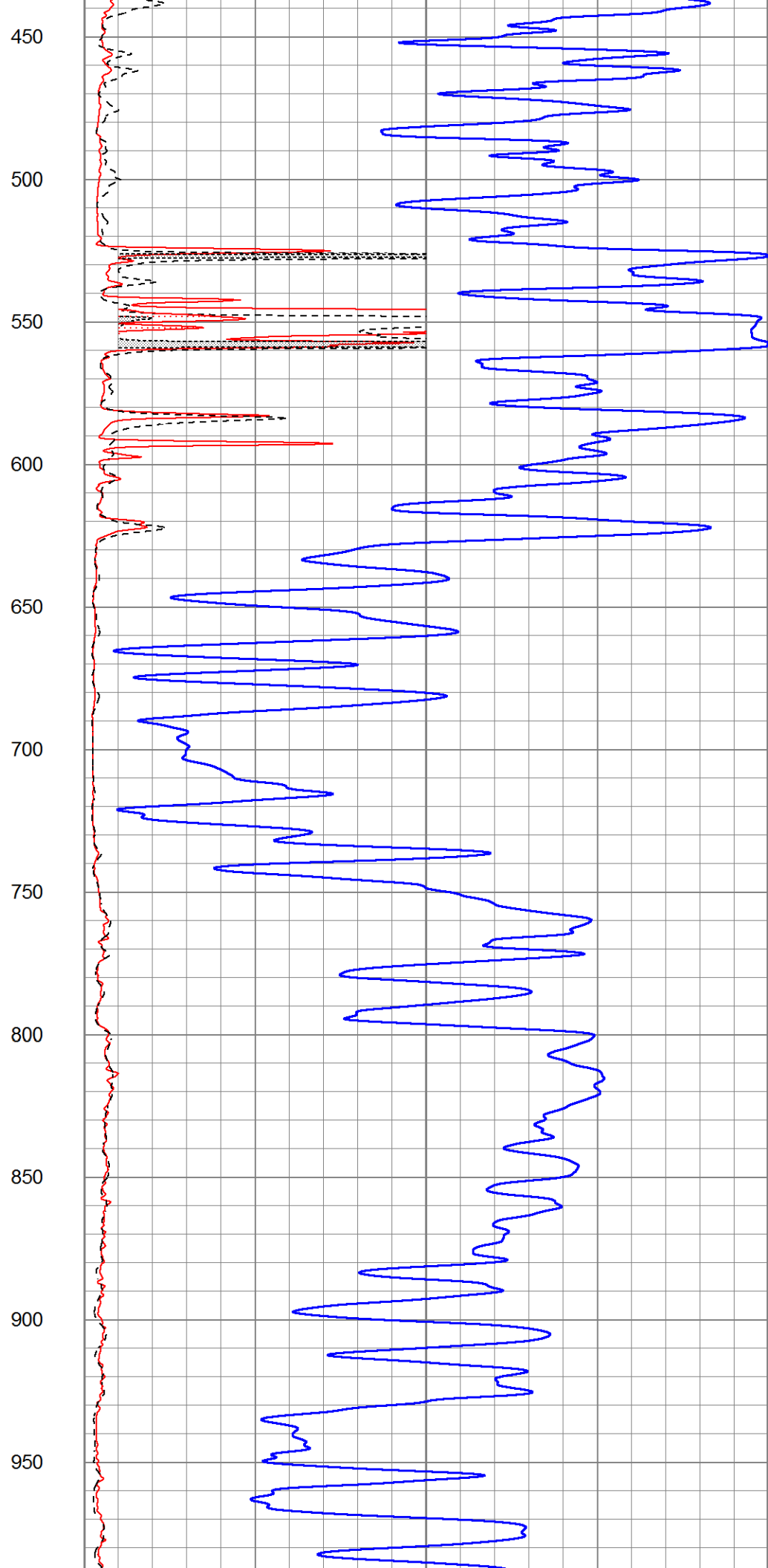
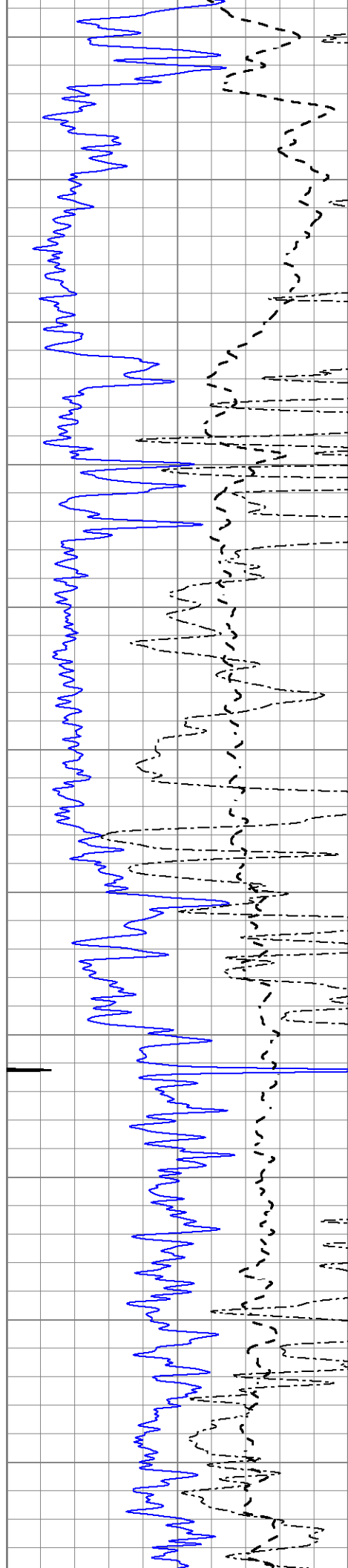
MAIN SECTION

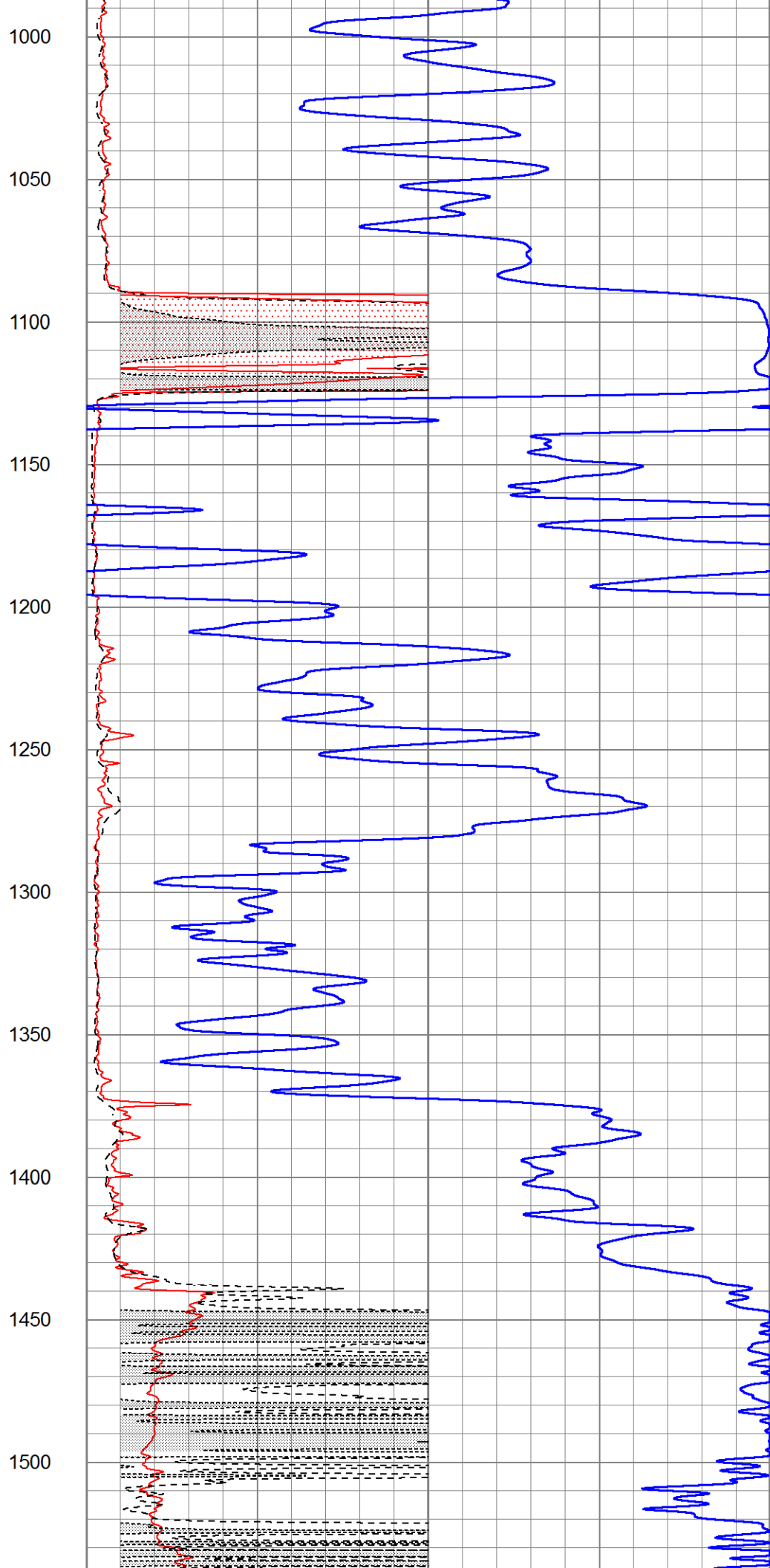
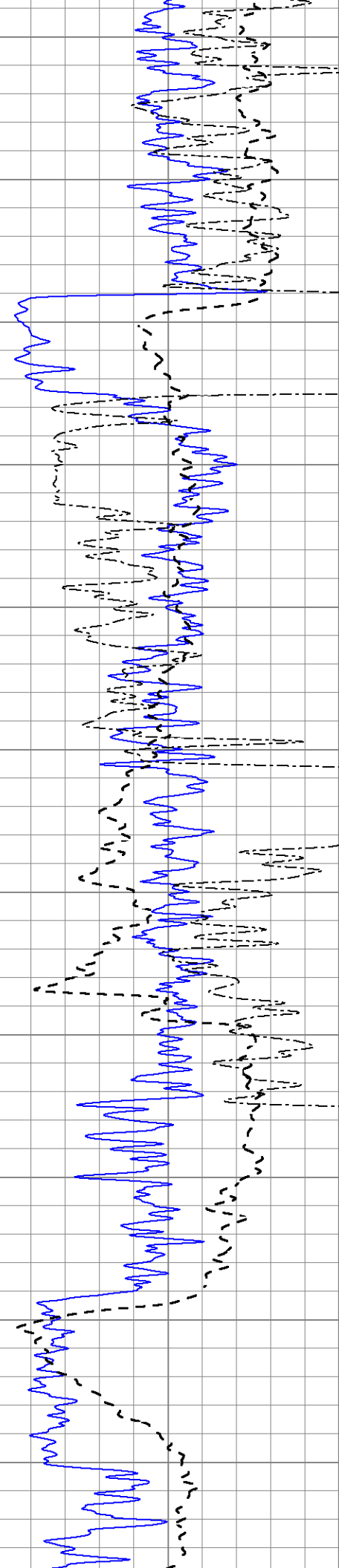
Database File 6258ddn.db  
 Dataset Pathname pass4.1M  
 Presentation Format dil2  
 Dataset Creation Mon Mar 07 23:56:23 2022  
 Charted by Depth in Feet scaled 1:600

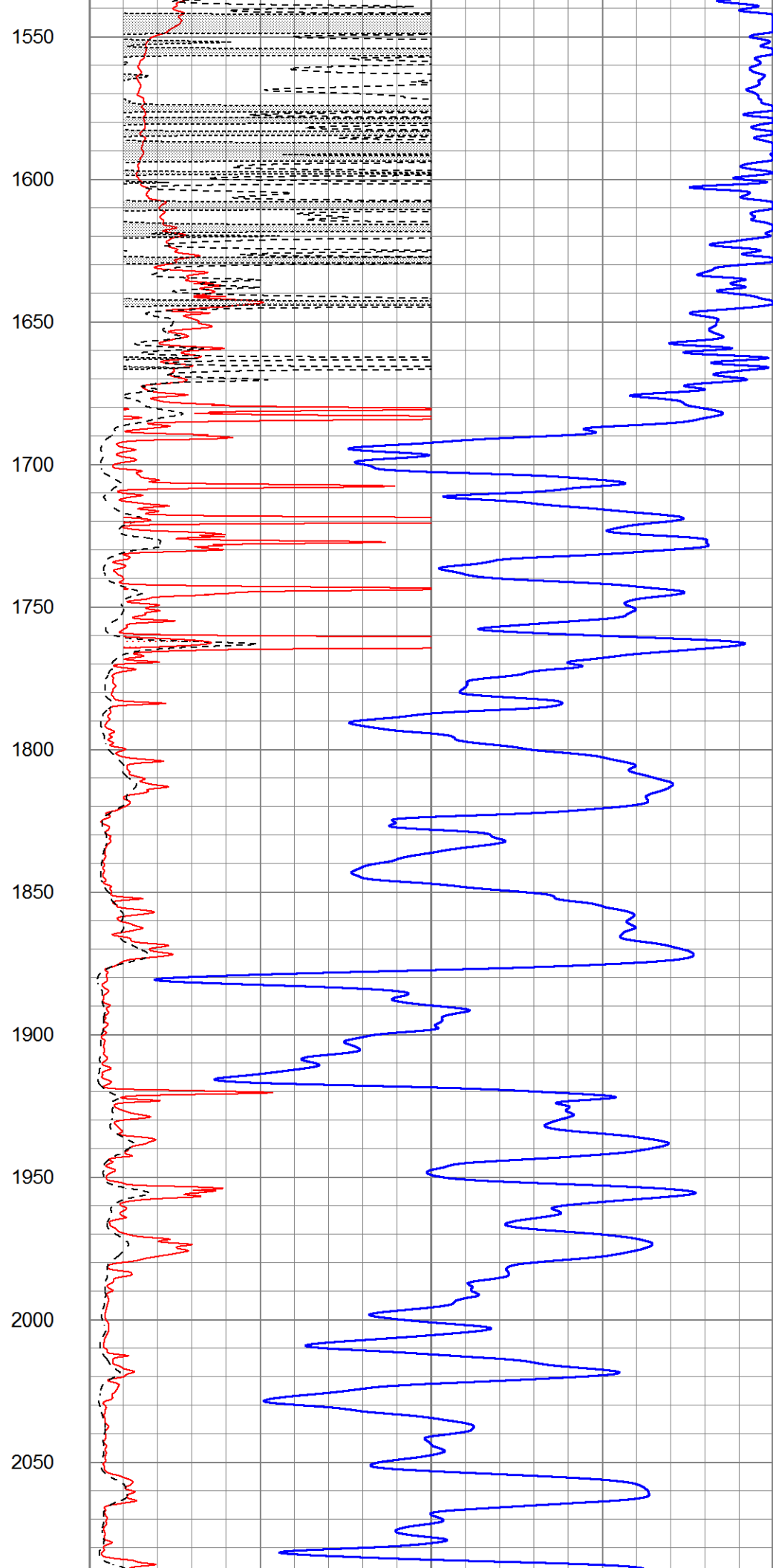
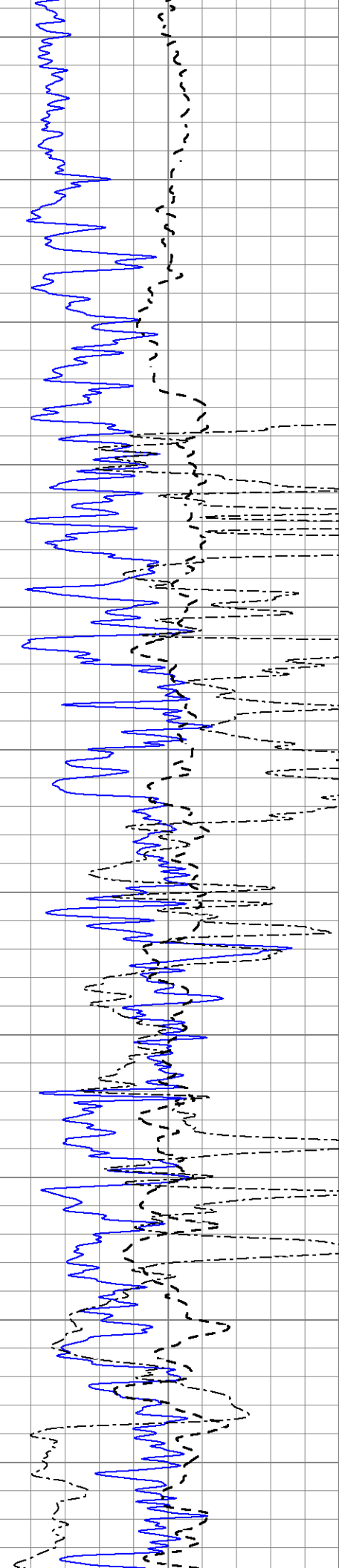
0	Gamma Ray (GAPI)	150
-100	SP (mV)	100
0	RWA (Ohm-m)	1

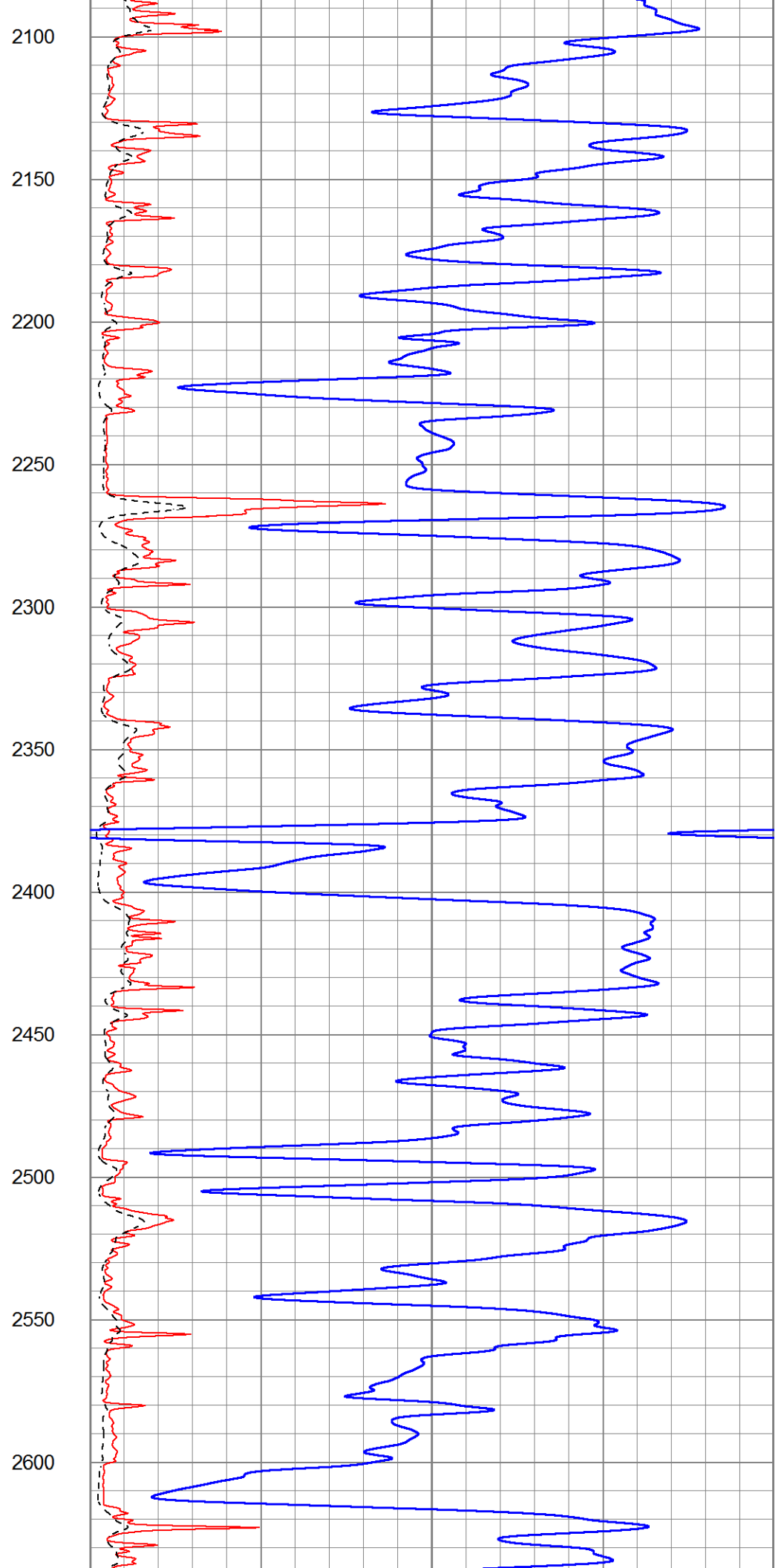
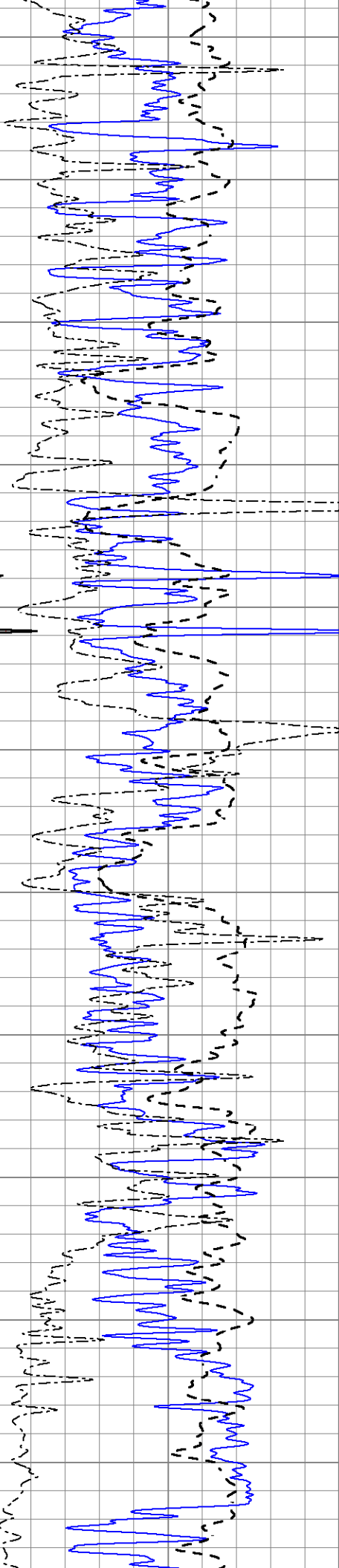
1000	CILD (mmho/m)	0
0	RLL3 (Ohm-m)	50
0	RILD (Ohm-m)	50
50	RILD X10 (Ohm-m)	500
50	RLL3 X10 (Ohm-m)	500

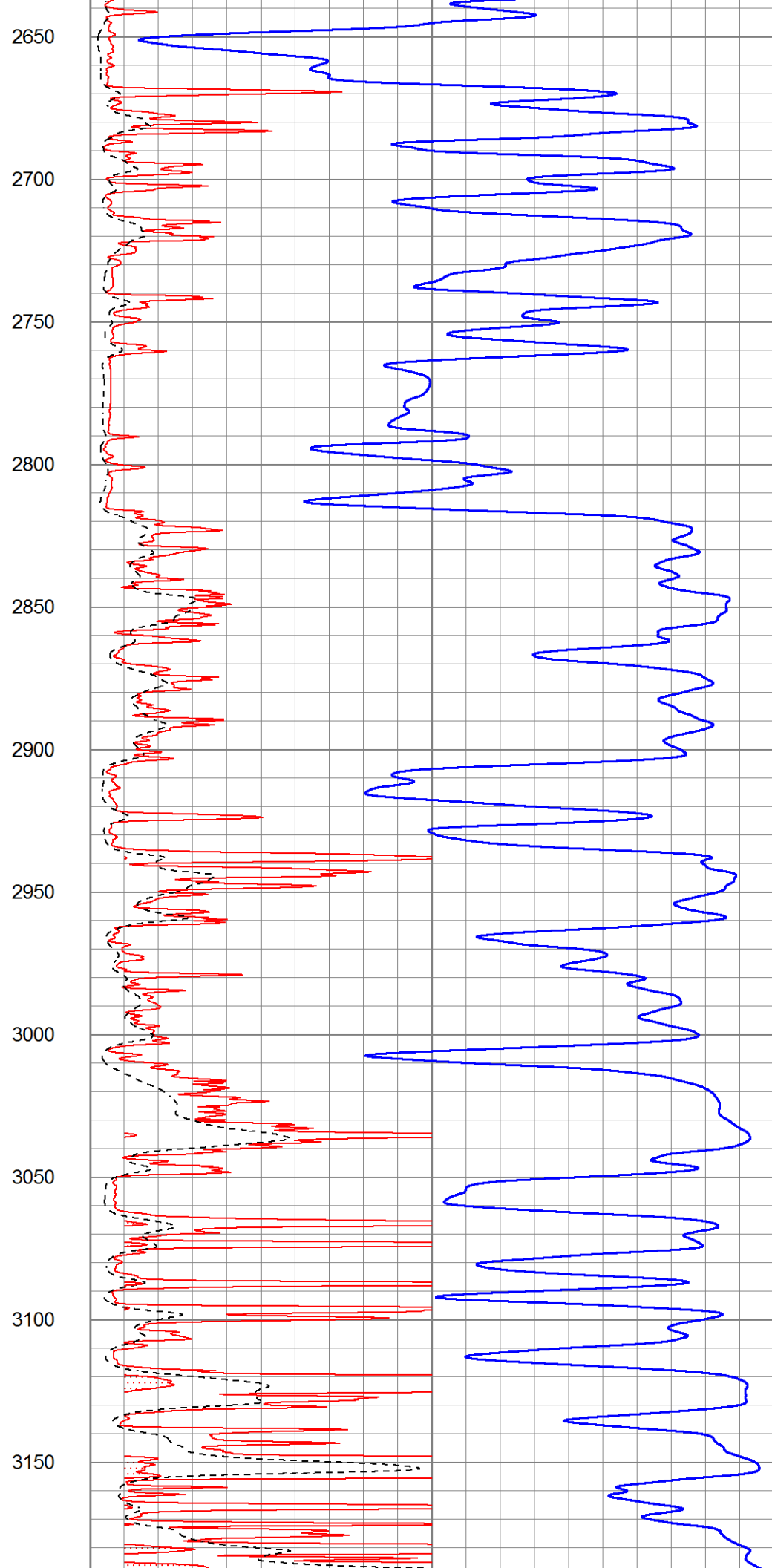
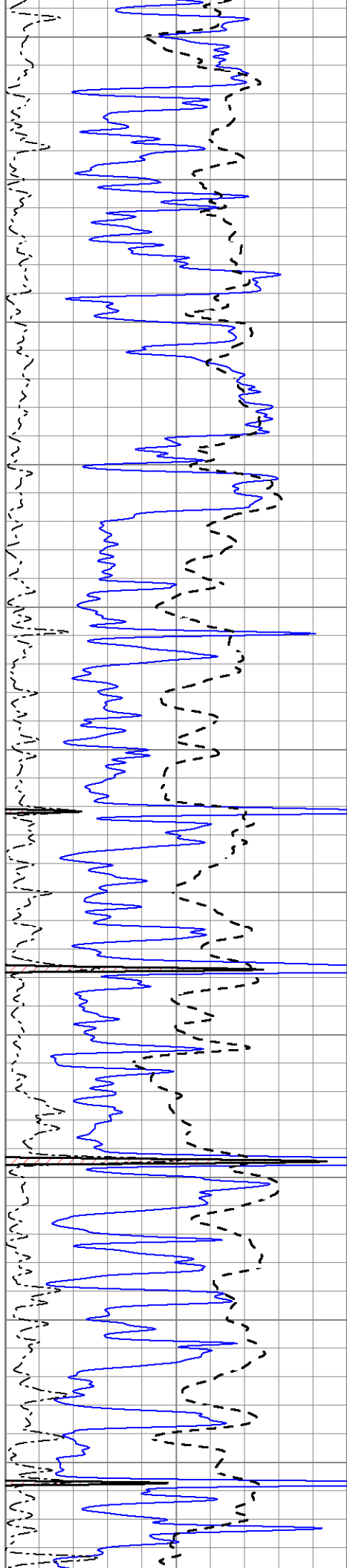


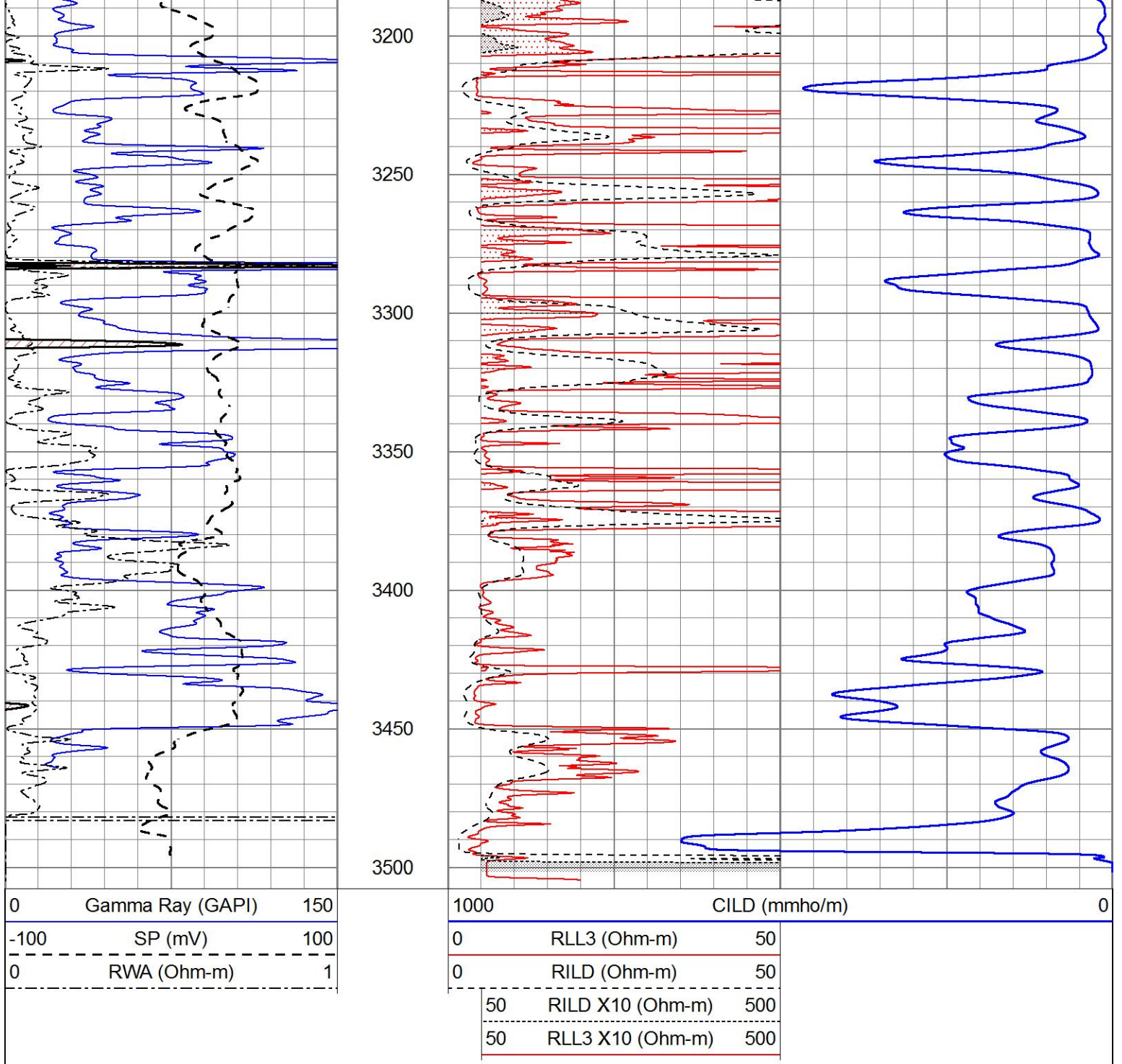








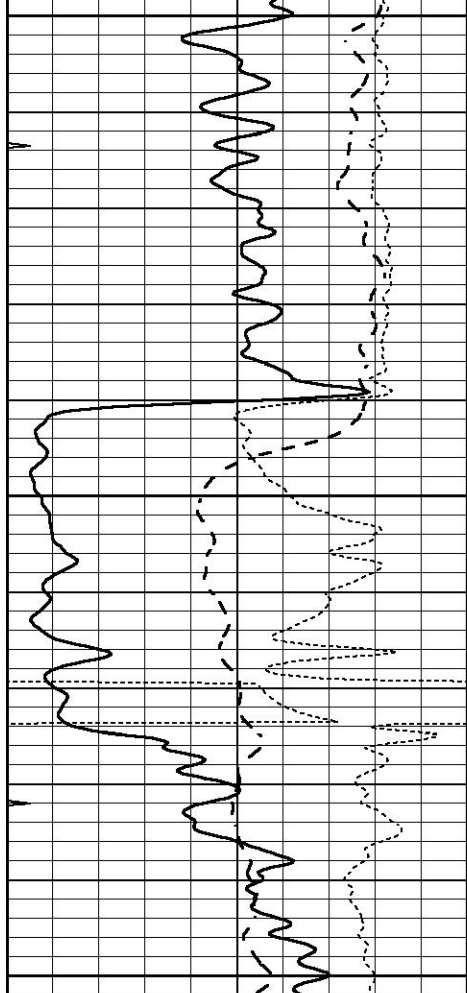




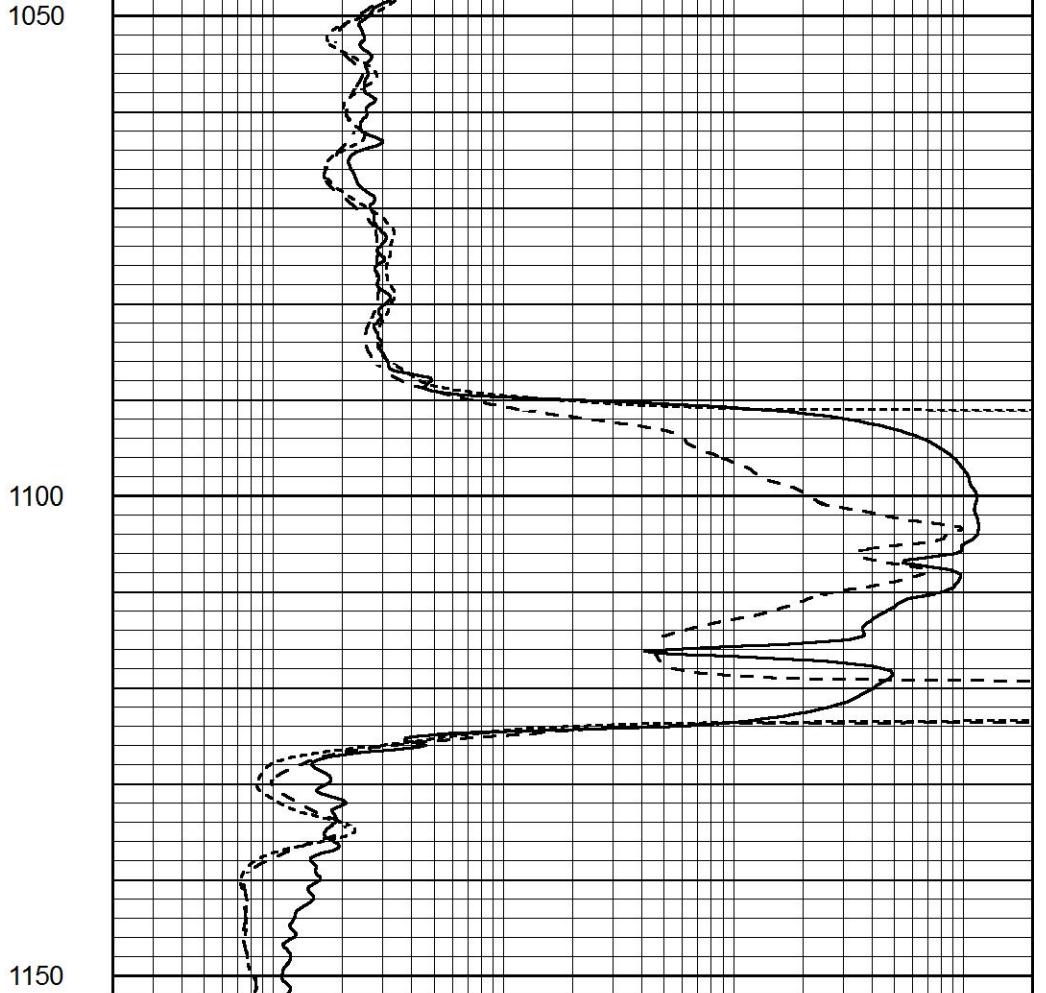
# ANHYDRITE

Database File 6258ddn.db  
 Dataset Pathname pass4.1A  
 Presentation Format \_dil  
 Dataset Creation Mon Mar 07 23:56:34 2022  
 Charted by Depth in Feet scaled 1:240

0	GAMMA RAY (GAPI)	150	0.2	SHALLOW GUARD (Ohm-m)	2000
-100	SP (mV)	100	0.2	DEEP INDUCTION (Ohm-m)	2000
-250	Rxo/Rt	50	0.2	MEDIUM INDUCTION (Ohm-m)	2000
0	MINMK	20			



0	GAMMA RAY (GAPI)	150
-100	SP (mV)	100
-250	Rxo/Rt	50
0	MINMK	20



0.2	SHALLOW GUARD (Ohm-m)	2000
0.2	DEEP INDUCTION (Ohm-m)	2000
0.2	MEDIUM INDUCTION (Ohm-m)	2000

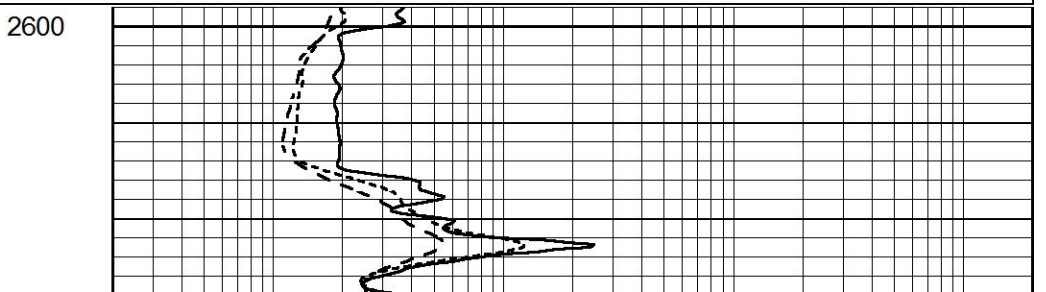
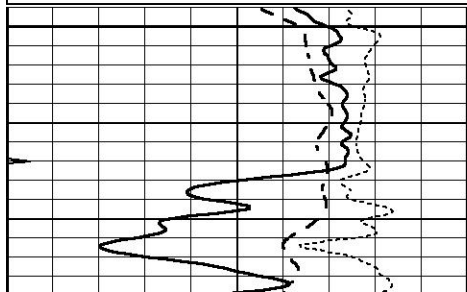


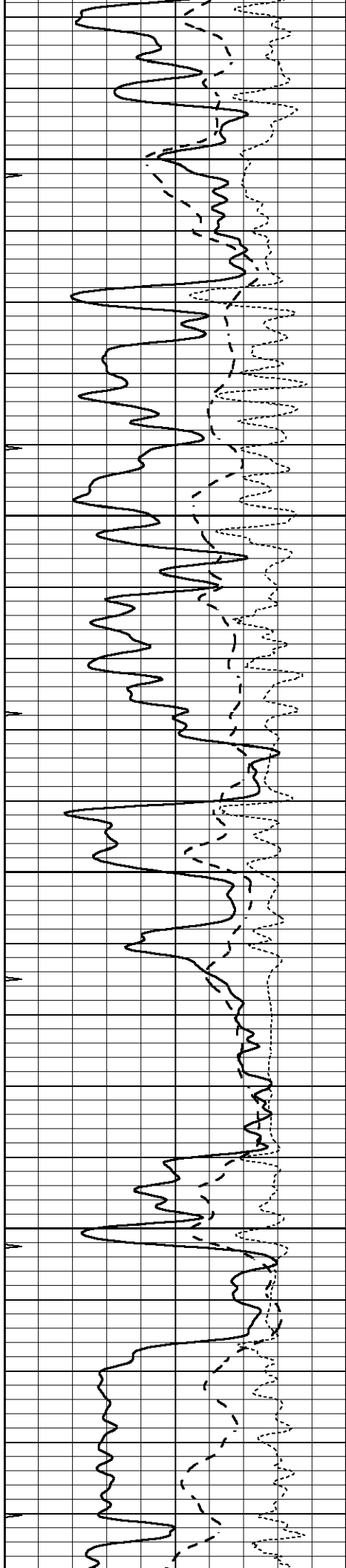
# MAIN SECTION

Database File 6258ddn.db  
 Dataset Pathname pass4.1M  
 Presentation Format \_dil  
 Dataset Creation Mon Mar 07 23:56:23 2022  
 Charted by Depth in Feet scaled 1:240

0	GAMMA RAY (GAPI)	150
-100	SP (mV)	100
-250	Rxo/Rt	50
0	MINMK	20

0.2	SHALLOW GUARD (Ohm-m)	2000
0.2	DEEP INDUCTION (Ohm-m)	2000
0.2	MEDIUM INDUCTION (Ohm-m)	2000



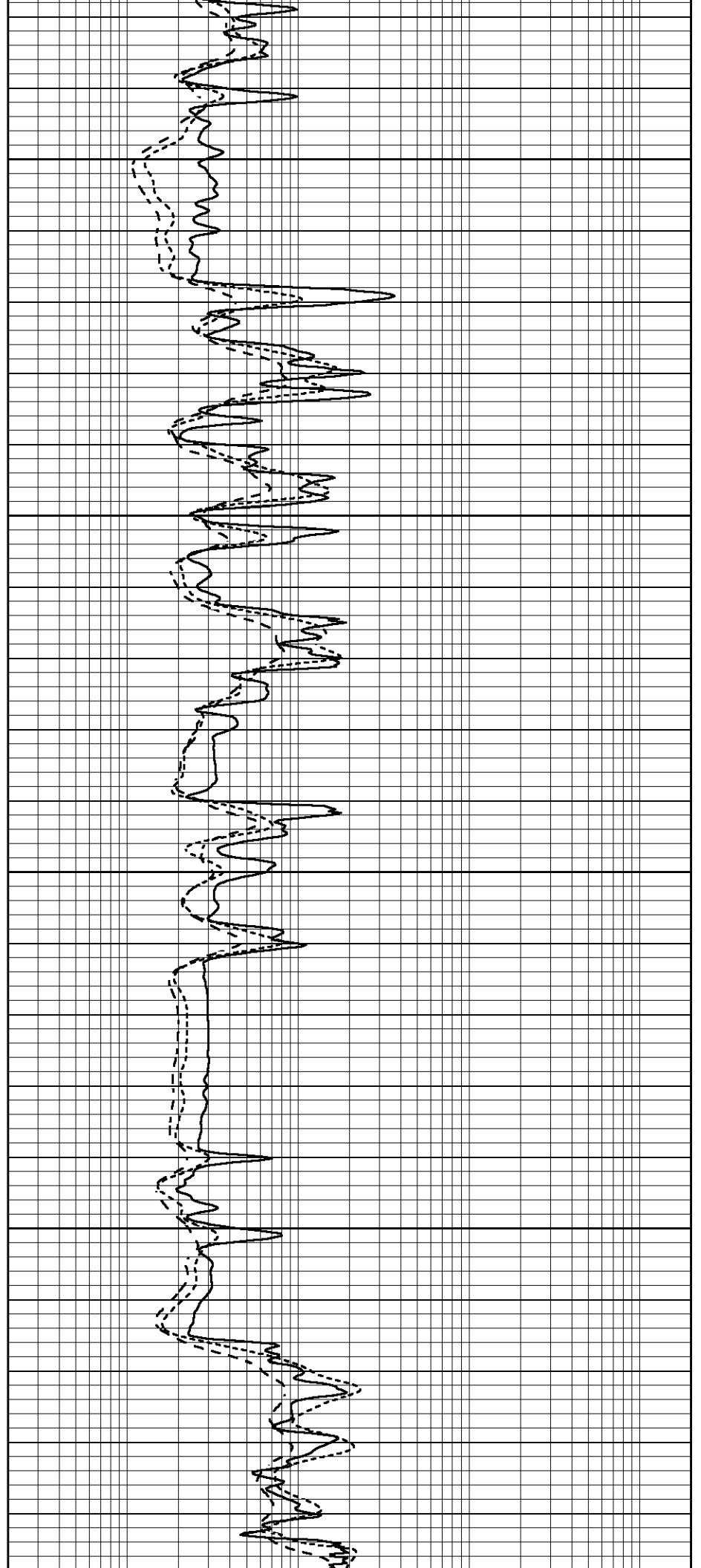


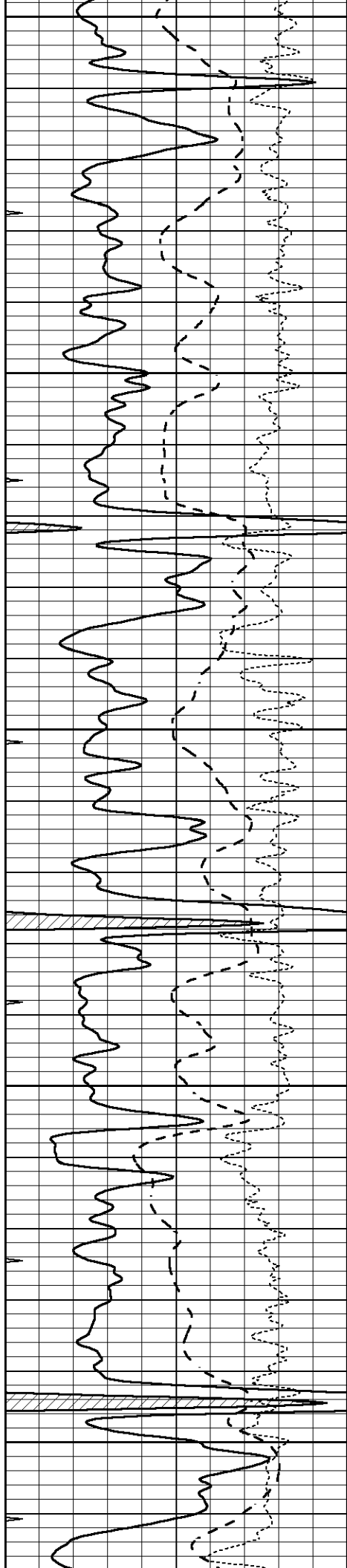
2650

2700

2750

2800





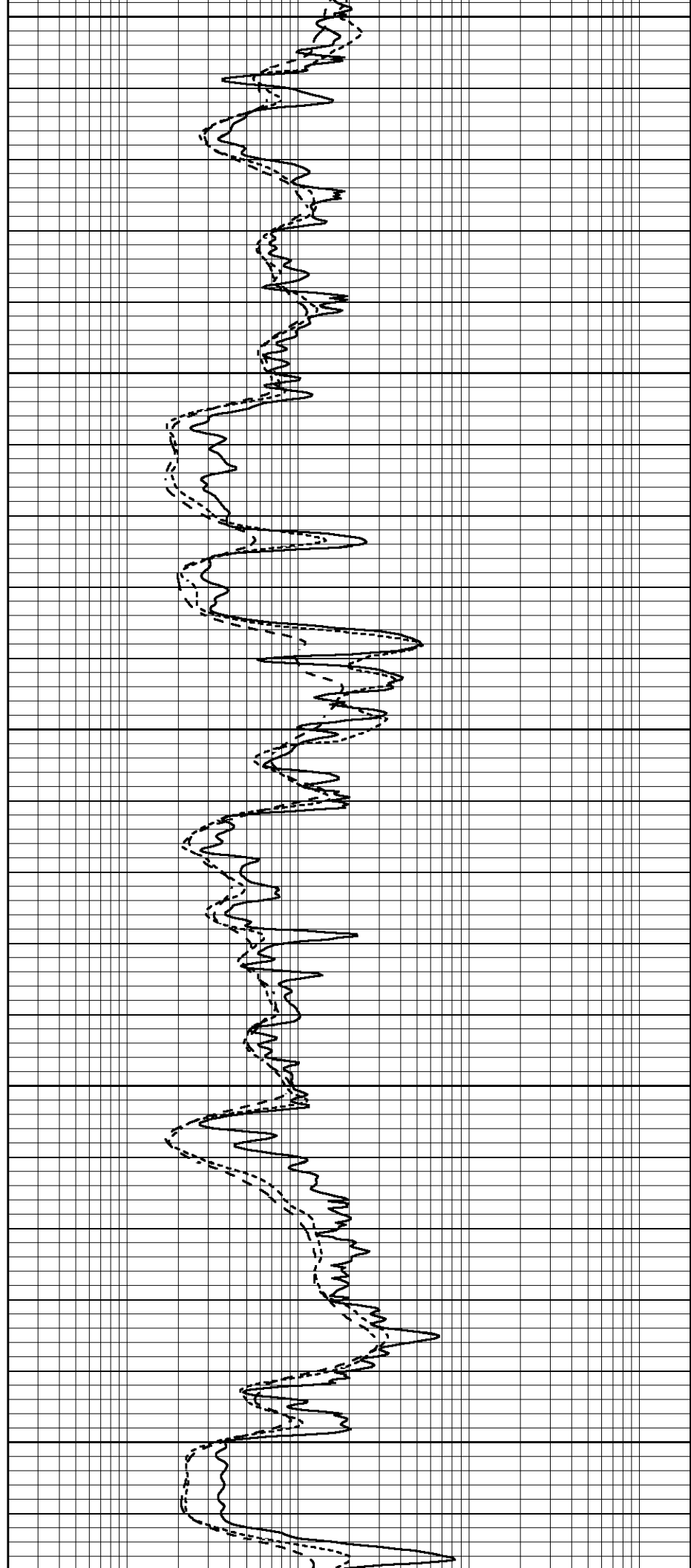
2850

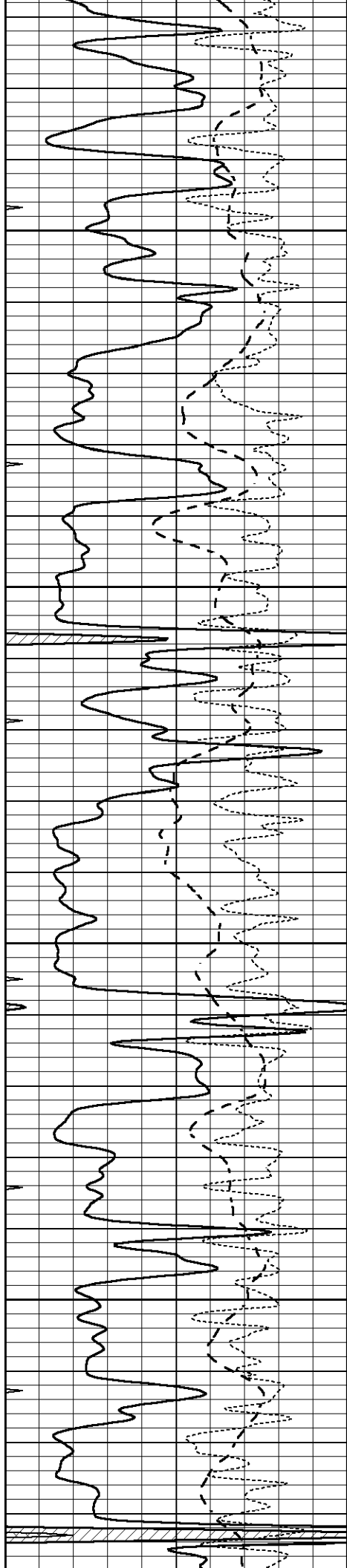
2900

2950

3000

3050



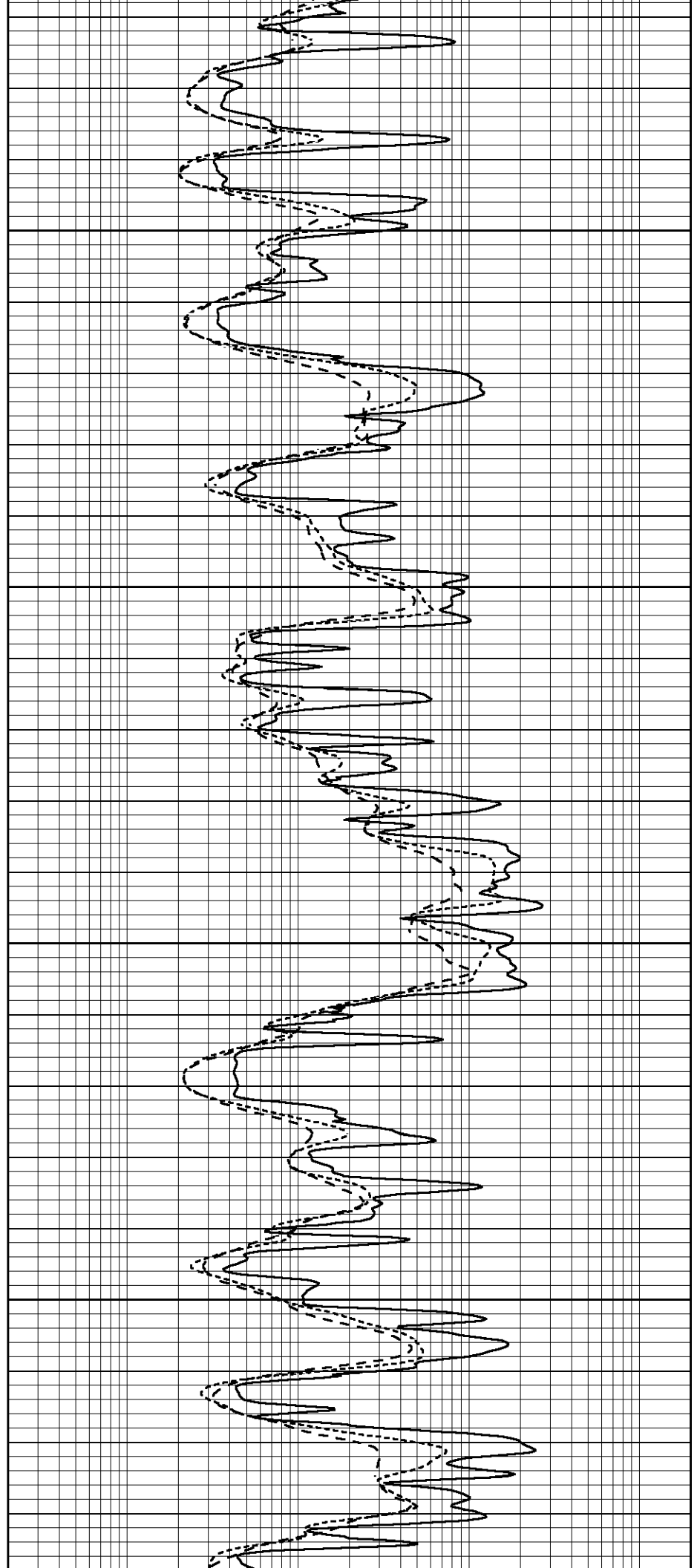


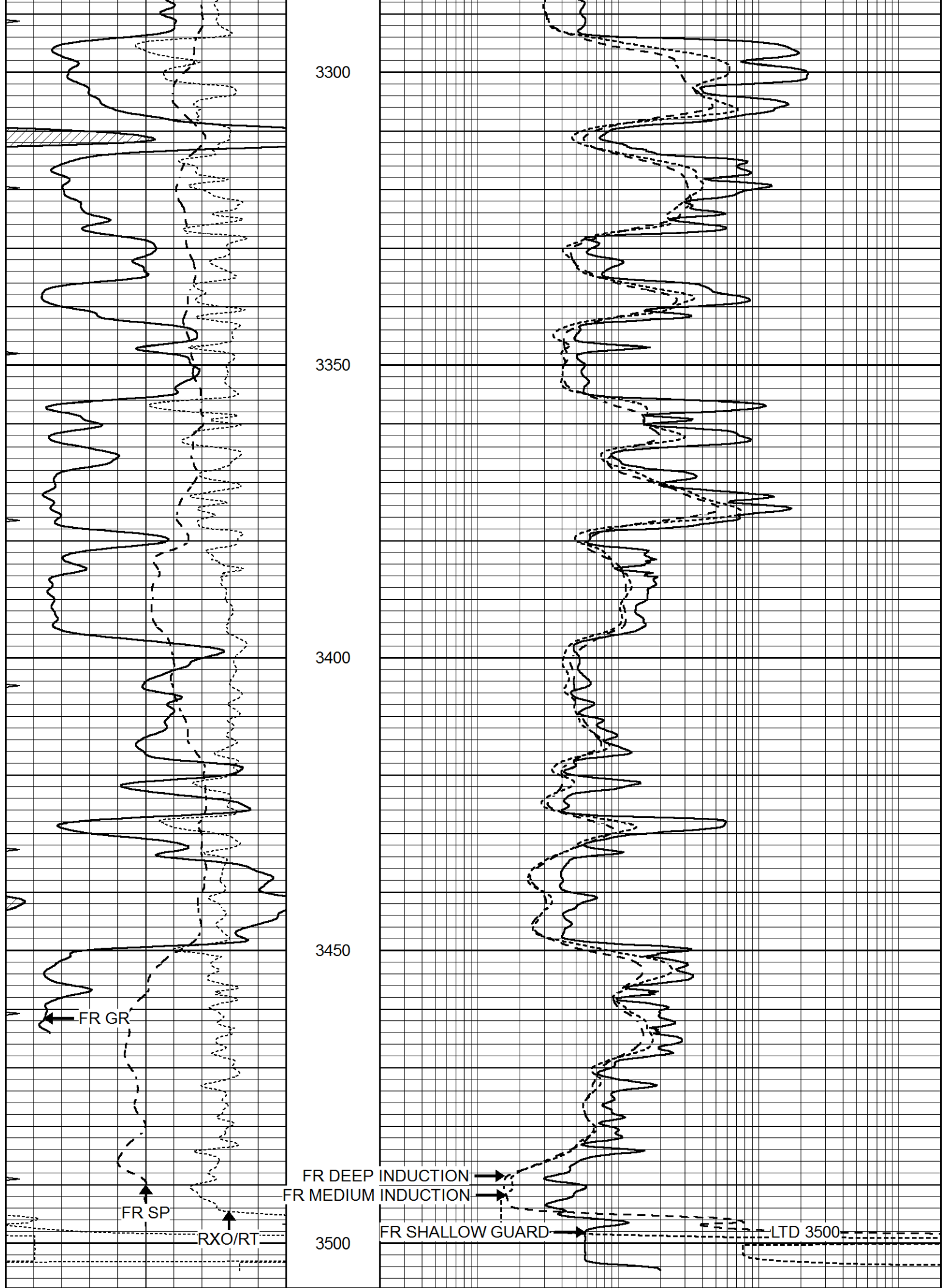
3100

3150

3200

3250





0	GAMMA RAY (GAPI)	150
-100	SP (mV)	100
-250	Rxo/Rt	50
0	MINMK	20

0.2	SHALLOW GUARD (Ohm-m)	2000
0.2	DEEP INDUCTION (Ohm-m)	2000
0.2	MEDIUM INDUCTION (Ohm-m)	2000

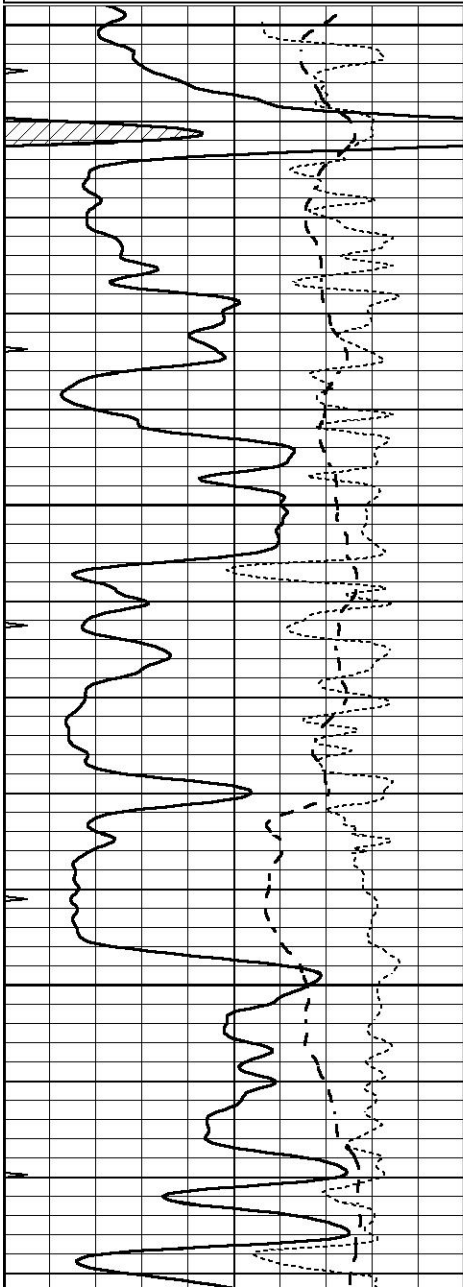


# REPEAT SECTION

Database File 6258ddn.db  
 Dataset Pathname pass3.2R  
 Presentation Format \_dil  
 Dataset Creation Tue Mar 08 00:08:30 2022  
 Charted by Depth in Feet scaled 1:240

0	GAMMA RAY (GAPI)	150
-100	SP (mV)	100
-250	Rxo/Rt	50
0	MINMK	20

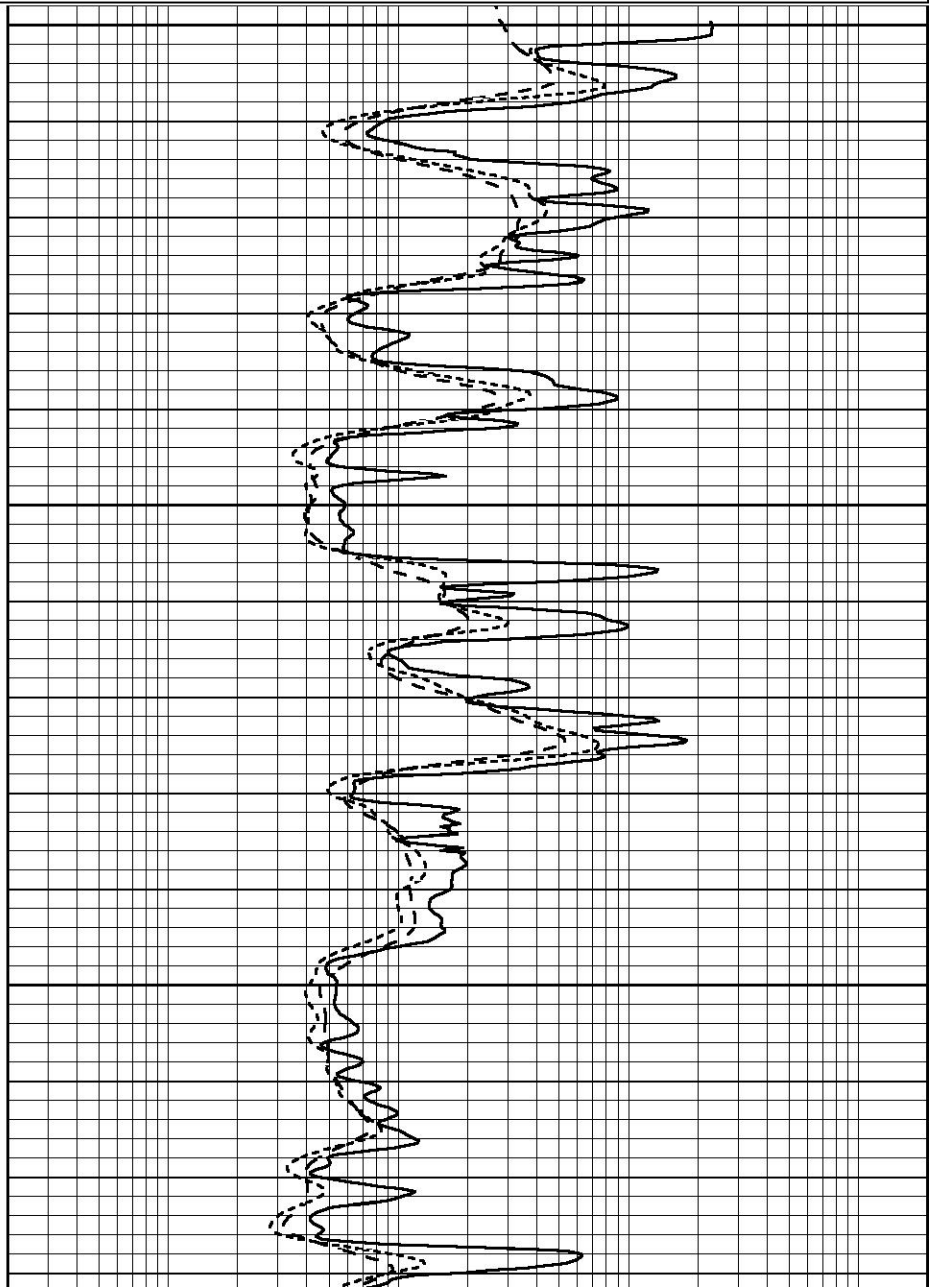
0.2	SHALLOW GUARD (Ohm-m)	2000
0.2	DEEP INDUCTION (Ohm-m)	2000
0.2	MEDIUM INDUCTION (Ohm-m)	2000



3300

3350

3400





	Readings			Targets			Results	
	Zero	Cal		Zero	Cal		m'	b'
Deep	0.000	0.000	mmho/m	0.000	0.000	mmho/m	0.000	0.000
Medium	0.000	0.000	mmho/m	0.000	0.000	mmho/m	0.000	0.000
LL3		1.000	Ohm-m		1.000	Ohm-m		
		0.000	Ohm-m		0.000	Ohm-m		
		1.000	mmho-m		1.000	mmho-m		

Litho Density Calibration Report  
Serial: 004 Model: PRB

Master Calibration

Performed Tue May 18 11:02:48 2021

	Background	Magnesium	Aluminum	Aluminum+Fe	
Window 1	1187.1	10004.0	3142.5	2810.8	cps
Window 2	1084.9	8556.6	2749.3	2502.4	cps
Window 3	923.1	5129.8	1819.8	1719.3	cps
Window 4	263.5	263.6	259.7	262.8	cps
Long Space	0.0	7471.7	1664.4	1417.5	cps
Short Space	1.5	984.9	645.6	561.2	cps
Rho		1.7100	2.5900	0.0000	g/cc
Pe		2.0000	2.7500	5.7900	
Rib Angle	: 44.3	Rib Slope	: 0.976	Density/Spine Ratio	: 0.564
Spine Angle	: 74.3	Spine Slope	: 3.555	Spine Intercept	: -15.6

Before Survey Verification

Performed Wed Dec 31 18:00:00 1969

Window 1	0.0	0.0	0.0	0.0	cps
Window 2	0.0	0.0	0.0	0.0	cps
Window 3	0.0	0.0	0.0	0.0	cps
Window 4	0.0	0.0	0.0	0.0	cps
Long Space	0.0	0.0	0.0	0.0	cps
Short Space	0.0	0.0	0.0	0.0	cps
Measured Rho		0.0000	0.0000	0.0000	g/cc
Measured Correction		0.0000	0.0000	0.0000	g/cc
Measured Pe			0.0000	0.0000	

After Survey Verification

Performed Wed Dec 31 18:00:00 1969

Window 1	0.0	0.0	0.0	0.0	cps
Window 2	0.0	0.0	0.0	0.0	cps
Window 3	0.0	0.0	0.0	0.0	cps
Window 4	0.0	0.0	0.0	0.0	cps
Long Space	0.0	0.0	0.0	0.0	cps
Short Space	0.0	0.0	0.0	0.0	cps
Measured Rho		0.0000	0.0000	0.0000	g/cc
Measured Correction		0.0000	0.0000	0.0000	g/cc
Measured Pe			0.0000	0.0000	

Compensated Neutron Calibration Report

Serial Number: 070808PMC  
Tool Model: NABORS

PRE-SURVEY VERIFICATION

Detector	Readings	Measured	Target
Short Space	cps		
Long Space	cps	pu	pu

POST-SURVEY VERIFICATION

Detector	Readings	Measured	Target
Short Space	cps		
Long Space	cps	pu	pu

Gamma Ray Calibration Report

Serial Number:	070558		
Tool Model:	OPEN_GR		
Performed:	Wed Mar 02 14:49:46 2022		
Calibrator Value:	1.0	GAPI	
Background Reading:	0.0	cps	
Calibrator Reading:	1.0	cps	
Sensitivity:	0.2800	GAPI/cps	