



MIDWEST SURVEYS
 LOGGING - PERFORATING - CONSULTING SERVICES
 P.O. Box 88, Osawatomie, KS 66064
 913.755.2128

GAMMA RAY / NEUTRON / CCL

File No.

Company **R.T. Enterprises of Kansas, LLC**

Well **South Fehler No. - 52**

Field **Paola - Rantoul**

County **Franklin** State **Kansas**

Location **3795' FSL & 5115' FEL**
NW-NW-SW-NW

Other Services
Perforate

Sec. **8** Twp. **16S** Rge. **21E**
 Permanent Datum **GL** Elevation **NA**
 Log Measured From **GL**
 Drilling Measured From **GL**

Date **12-29-2012**
 Run Number **One**
 Depth Diller **760.0**
 Depth Logger **691.0**
 Bottom Logged Interval **690.0**
 Top Log Interval **20.0**
 Fluid Level **Full**

BORE-HOLE RECORD				CASINGS RECORD			
RUN No.	BIT FROM	TO	SIZE	WGT.	FROM	TO	
One	9.875"	0.0	21.0	7.00"	17.0#	0.0	21.0
Two	5.625"	21.0	790.0	2.875"	6.5#	0.0	729.5
					Baffle	Set	At
							698.6

Recorded By **Steve Wandsch**
 Equipment No. **102**
 Location **Osawatomie**
 Addressed By **Lance Town**

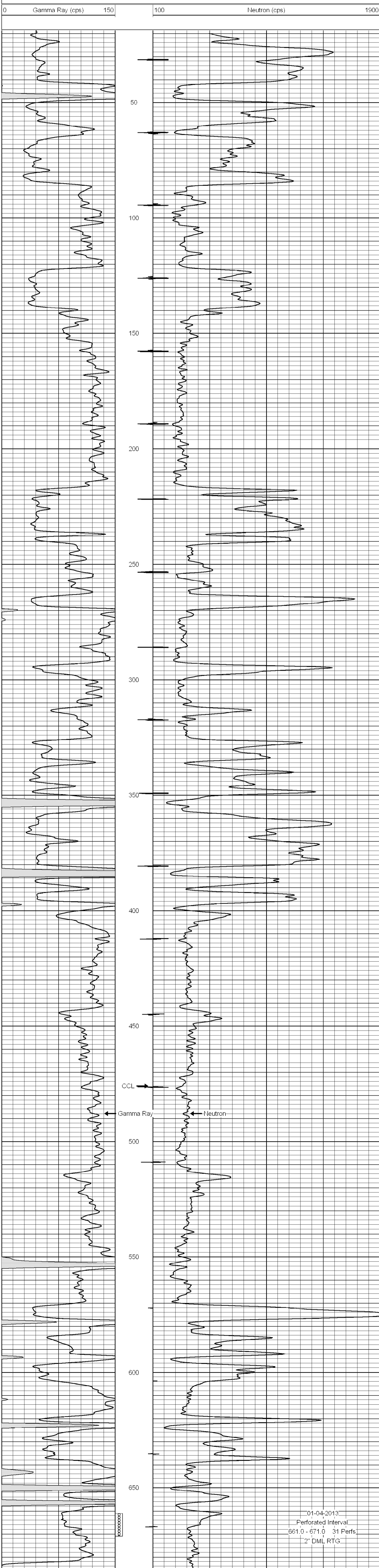
<<< Fold Here >>>

All interpretations are opinions based on inferences from electrical or other measurements and we cannot and do not guarantee the accuracy or correctness of any interpretation, and we shall not, except in the case of gross or willful negligence on our part, be liable or responsible for any loss, costs, damages, or expenses incurred or sustained by anyone resulting from any interpretation made by any of our officers, agents or employees. These interpretations are also subject to our general terms and conditions set out in our current Price Schedule.

Comments

Drilling Contractor :
 Town Oilfield Services, Inc.

Database File: fiehler52s.db
 Dataset Pathname: pass1
 Presentation Format: gr-n-ccl
 Dataset Creation: Sat Dec 29 10:15:20 2012 by Log SCH 111116
 Charted by: Depth in Feet scaled 1:240



01-04-2013
 Perforated Interval
 661.0 - 671.0 31 Perfs.
 2" DML RTG