



MIDWEST SURVEYS
 LOGGING - PERFORATING - CONSULTING SERVICES
 P.O. Box 69, Osawatomie, KS 66064
 913 / 755 - 2128

GAMMA RAY / NEUTRON / CCL

File No.

Company Hughes Drilling Company

Well South McMillen No.-13

Field Leloup

County Franklin State Kansas

Location 4280 FSL & 1720 FEL
SW-SE-NW/NE

Sec 11 Twp. 16s Rge. 20e

Permanent Datum GL Elevation 983'

Log Measured From GL

Drilling Measured From GL

Date 02-07-2018

Run Number One

Depth Diller 772.0

Depth Logger 749.0

Bottom Logged Interval 748.0

Top Log Interval 20.0

Fluid Level Full

Type Fluid Water

Density / Viscosity NA

Salinity - PPM Cl NA

Max Recorded Temp NA

Estimated Cement Top 0.0

Equipment No. Location 104 Osawatomie

BORE-HOLE RECORD		CASING RECORD		TO			
RUN	NO.	BIT	FROM	TO	FROM	FROM	TO
One	10.875"	0.0	34.0	6.25"	15.0	0.0	34.0
Two	5.625"	34.0	772.0	2.875"	6.5	0.0	754.45

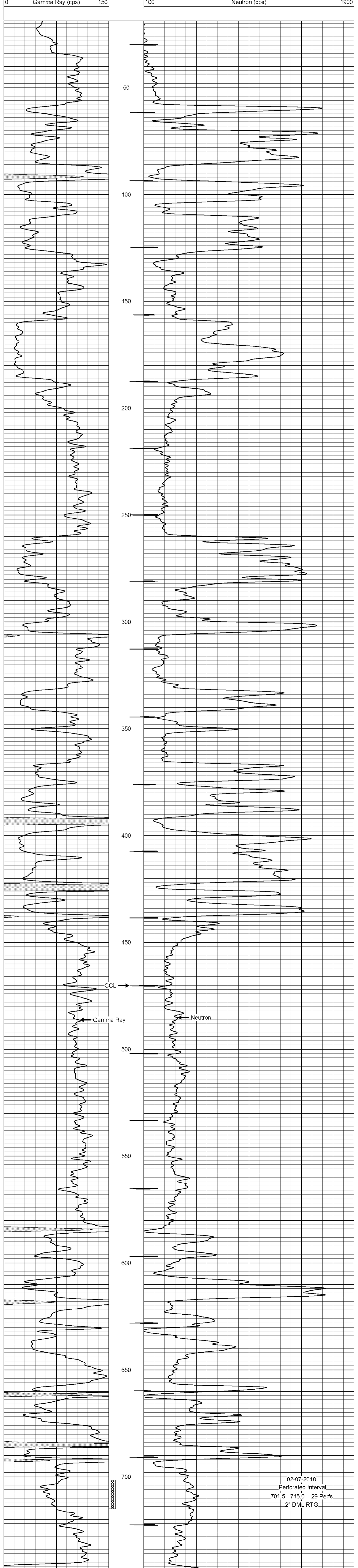
<<< Fold Here >>>

All interpretations are opinions based on inferences from electrical or other measurements and we cannot and do not guarantee the accuracy or correctness of any interpretation, and we shall not, except in the case of gross or willful negligence on our part, be liable or responsible for any loss, costs, damages, or expenses incurred or sustained by anyone resulting from any interpretation made by any of our officers, agents or employees. These interpretations are also subject to our general terms and conditions set out in our current Price Schedule.

Comments

Drilling Contractor :
Hughes Drilling Company

Database File: south mcmillen 13.db
 Dataset Pathname: pass1
 Presentation Format: gr-n-ccl
 Dataset Creation: Wed Feb 07 09:17:12 2018 by Log SCH 111116
 Charted by: Depth in Feet scaled 1:240



02-07-2018
 Perforated Interval
 701.5 - 715.0 29 Perfs
 2" DML RTG