



**MIDWEST SURVEYS**  
 LOGGING - PERFORATING - CONSULTING SERVICES  
 P.O. Box 68, Osawatomie, KS 66064  
 913 / 755 - 2128

**GAMMA RAY / NEUTRON / CCL**

File No. Company Southern Sky Energy, LLC  
 Well Revey No. - 55  
 Field Paola - Rantoul

County Franklin State Kansas

Location 825' FSL & 1700' FEL  
 SW-NE-SW-NE

Other Services Perforate

Sec. 30 Permament Datum Log Measured From Drilling Measured From  
 Type 15s Rge. 21e  
 GL GL GL  
 Elevation 991'  
 K.B. NA D.F. NA G.L. 991'

Date	08-01-2025
Run Number	One
Depth Driller	800.0
Depth Logger	744.0
Bottom Logged Interval	743.0
Top Log Interval	20.0
Fluid Level	Full
Type Fluid	Water
Density / Viscosity	NA
Salinity - PPM Cl	NA
Max Recorded Temp	NA
Estimated Cement Top	0.0
Equipment No.	107
Location	Osawatomie
Recorded By	Steve Mandrich
Witnessed By	Brad Williams

BORE-HOLE RECORD			
Run No.	BIT FROM	TO	SIZE
One	9.875"	20.0	7.03"
Two	5.875"	800.0	2.875"

CASING RECORD			
	WTG.	FROM	TO
	6.5	0.0	20.0
	Set	At	749.0

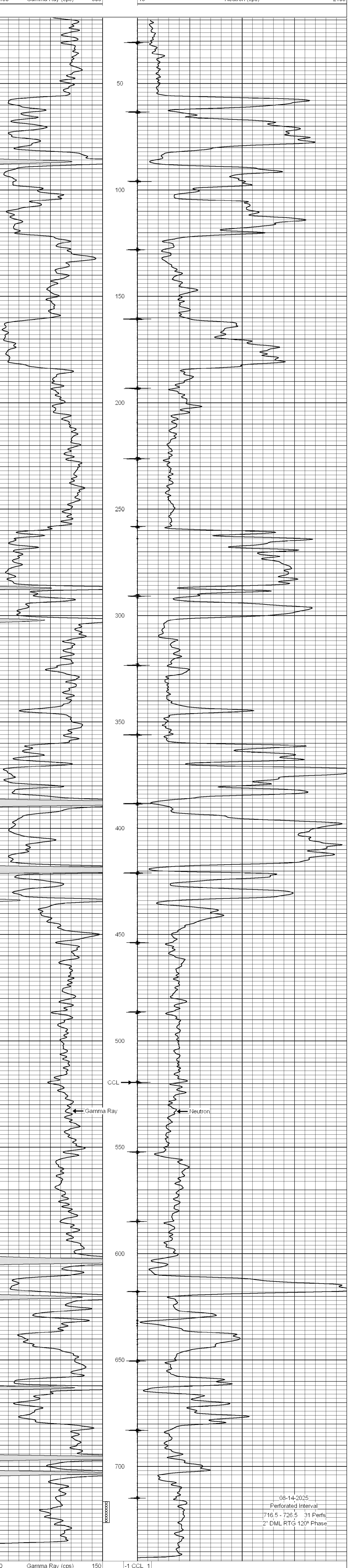
<<< Fold Here >>>

All interpretations are opinions based on inferences from electrical or other measurements and we cannot and do not guarantee the accuracy or correctness of any interpretation, and we shall not, except in the case of gross or willful negligence on our part, be liable or responsible for any loss, costs, damages, or expenses incurred or sustained by anyone resulting from any interpretation made by any of our officers, agents or employees. These interpretations are also subject to our general terms and conditions set out in our current Price Schedule.

Comments

Drilling Contractor :  
TDR Construction, Inc.

Database File: revey 55.db  
 Dataset Pathname: pass1  
 Presentation Format: gr-n-ccl  
 Dataset Creation: Fri Aug 01 11:13:28 2025 by Log SCH 111116  
 Charted by: Depth in Feet scaled 1:240



08-14-2025  
 Perforated Interval  
 716.5 - 726.5 31 Perfs  
 2" DML RTG 120° Phase