



Pioneer Energy Services

Dual Induction Log

15-063-22,200-00-00

API No.

Company **K-T Oil Exploration & Leasing Co.**

Well **Windholz #1**

Field

County **Gove**

State

Kansas

Location

**NE-NW-SE-NW
1325' FNL & 1810' FWL**

Sec: **6**

Twp: **11S**

Rge: **28W**

Other Services
CNL/CDL
MEL

Permanent Datum
Log Measured From
Drilling Measured From

Ground Level
Kelly Bushing
From Kelly Bushing

Elevation
2777
5 Ft. Above Perm. Datum

Date

5/13/2014

Run Number

One

Depth Driller

4530

Depth Logger

4530

Bottom Logged Interval

4529

Top Log Interval

250

Casing Driller

8.625 @ 263

Casing Logger

261

Bit Size

7.875

Type Fluid in Hole

Chemical

Salinity, ppm CL

1,000

Density / Viscosity

9.4 49

pH / Fluid Loss

9.0 12.8

Source of Sample

Flowline

Rm @ Meas. Temp

1.10 @ 64

Rmf @ Meas. Temp

.83 @ 64

Rmc @ Meas. Temp

1.49 @ 64

Source of Rmf / Rmc

Charts

Rm @ BHT

.58 @ 121

Operating Rig Time

4 Hours

Max Rec. Temp. F

121

Equipment Number

108

Location

Hays

Recorded By

J. Hennickson

Witnessed By

Tony Richardson

<<< Fold Here >>>

All interpretations are opinions based on inferences from electrical or other measurements and we cannot and do not guarantee the accuracy or correctness of any interpretation, and we shall not, except in the case of gross or willful negligence on our part, be liable or responsible for any loss, costs, damages, or expenses incurred or sustained by anyone resulting from any interpretation made by any of our officers, agents or employees. These interpretations are also subject to our general terms and conditions set out in our current Price Schedule.

Comments

Thank you for using Pioneer Energy Services
www.pioneerenergy.com
785 625 3858

Grainfield Kansas
1/2 North to DD Rd, 3/4 North, East Into

Database File: c:\warrior\data\k-t oil exploration_windholz # 1\kt_oil_windholz_1hd.db
Dataset Pathname: DIL/ktstk
Presentation Format: dil2in
Dataset Creation: Tue May 13 04:47:30 2014
Charted by: Depth in Feet scaled 1:600

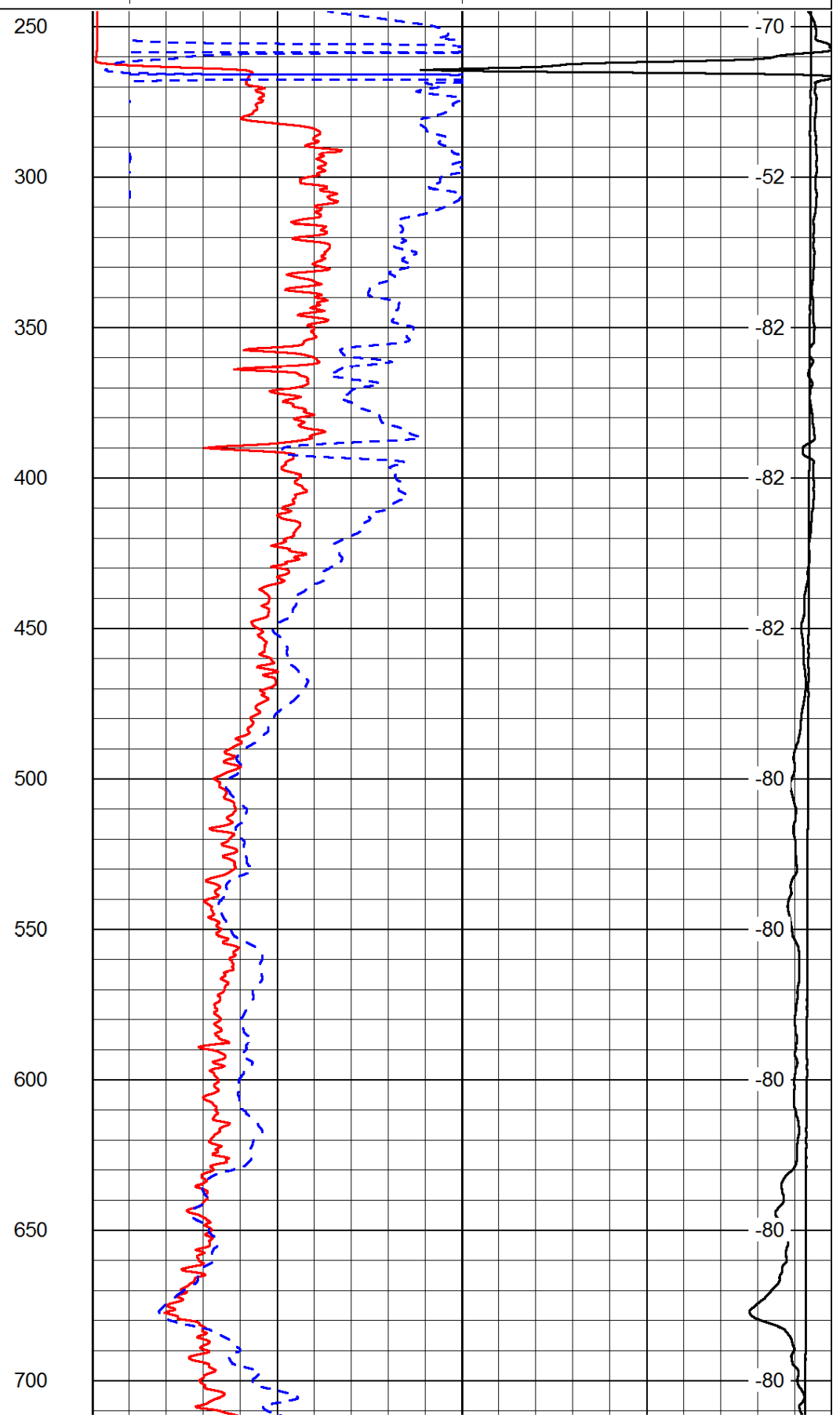
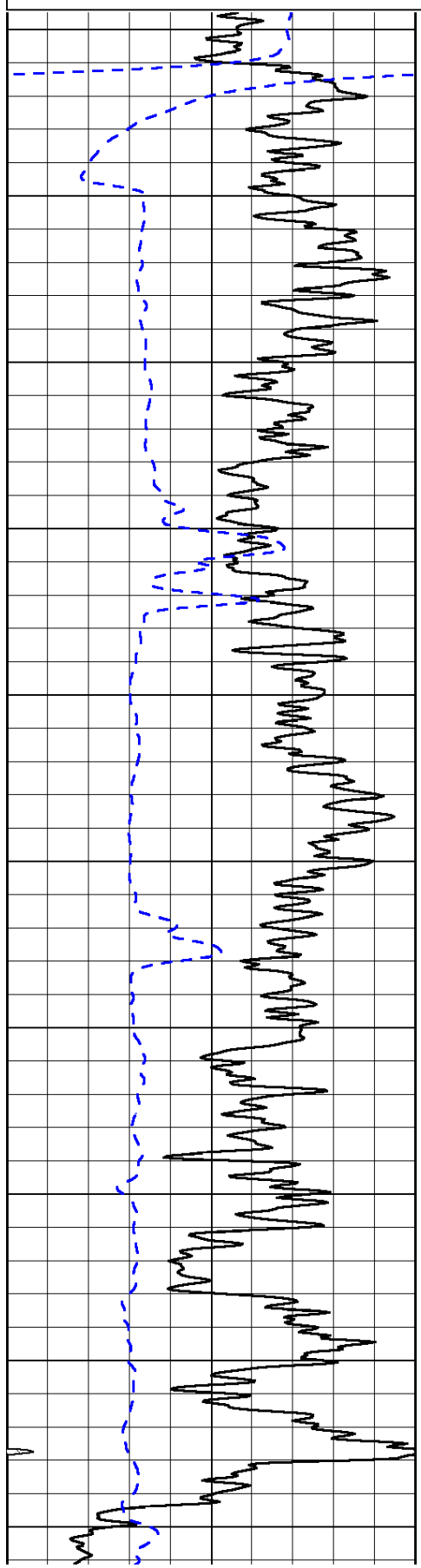
0	Gamma Ray	150
-200	SP (mV)	0

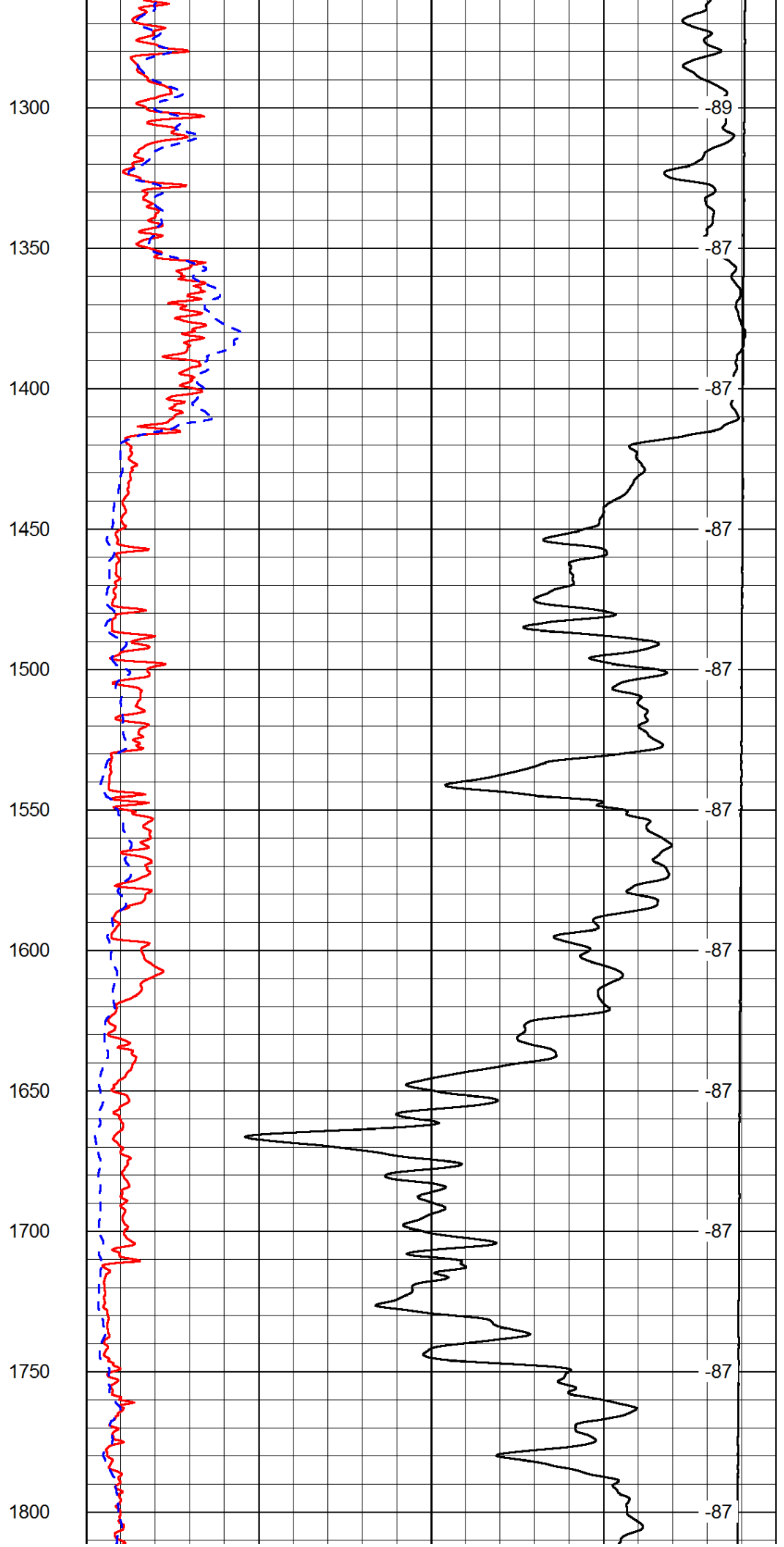
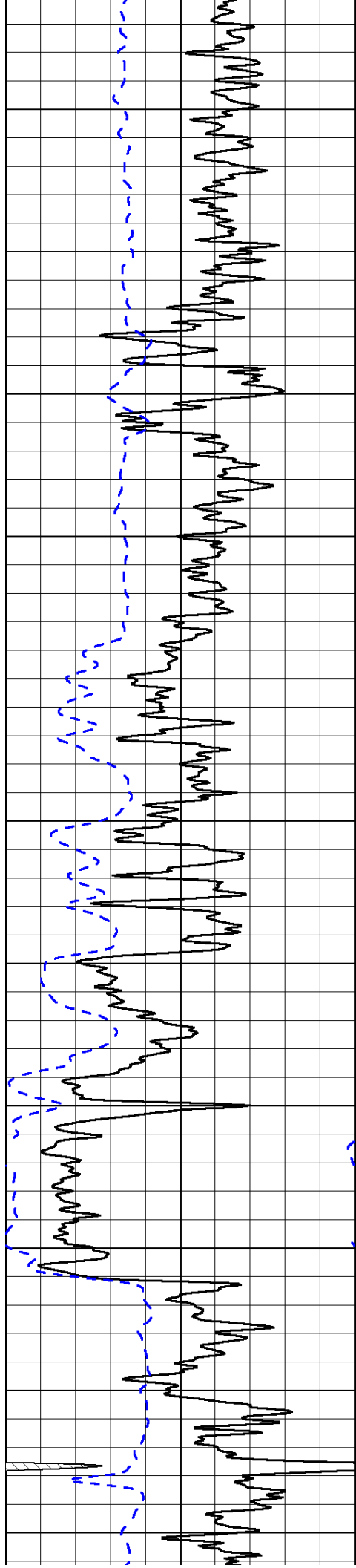
0	Shallow Resistivity	50
0	Deep Resistivity	50

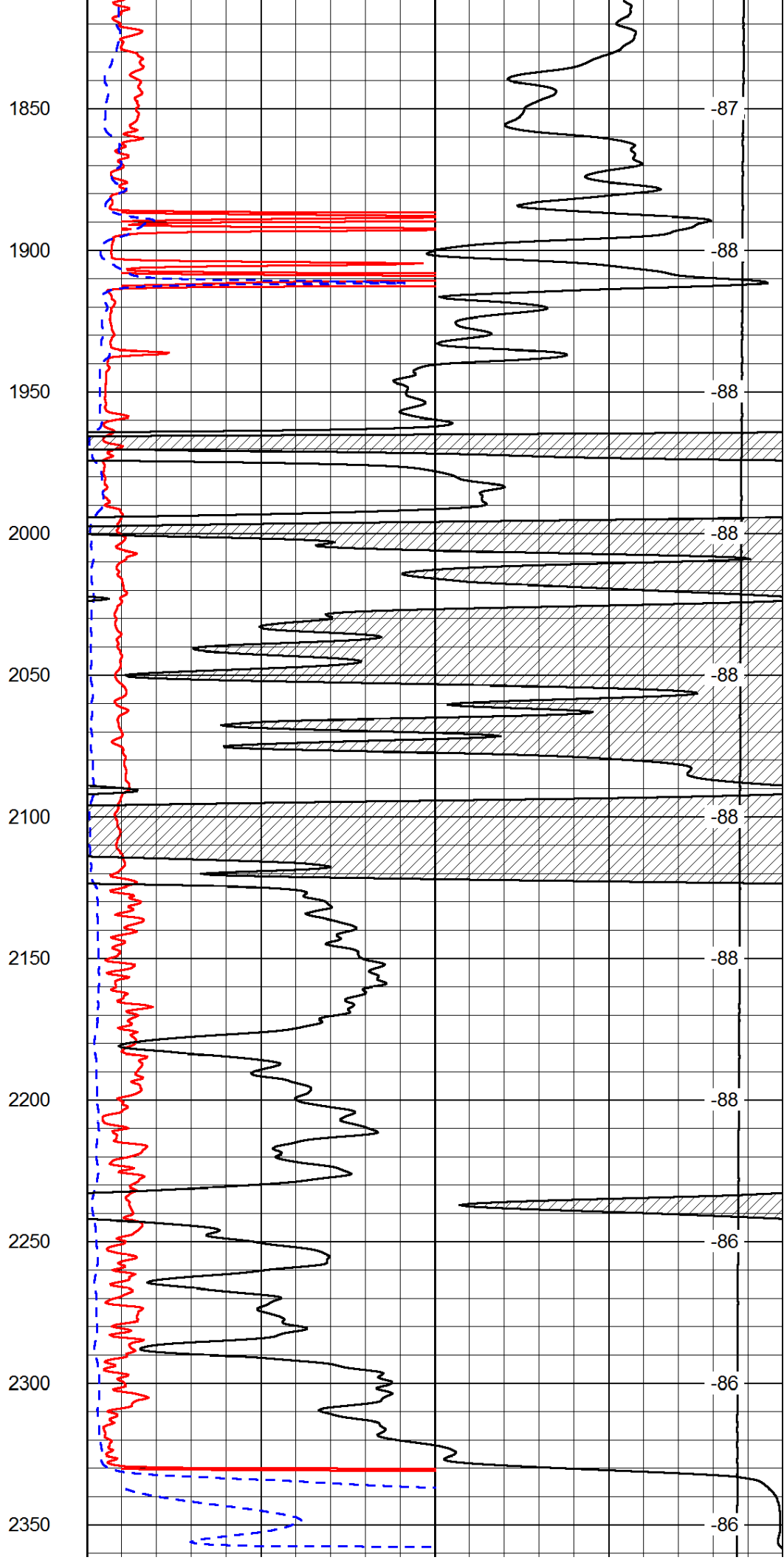
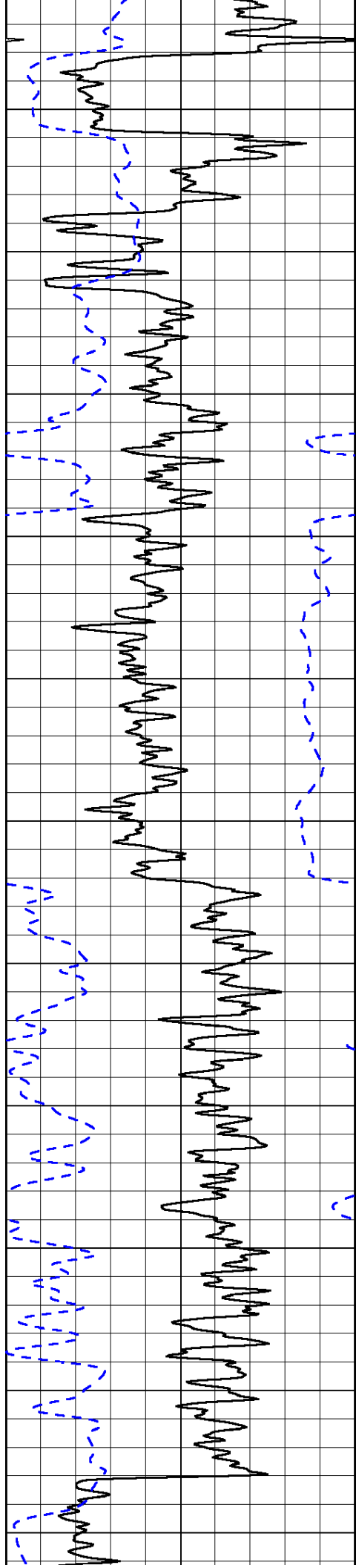
LSPD

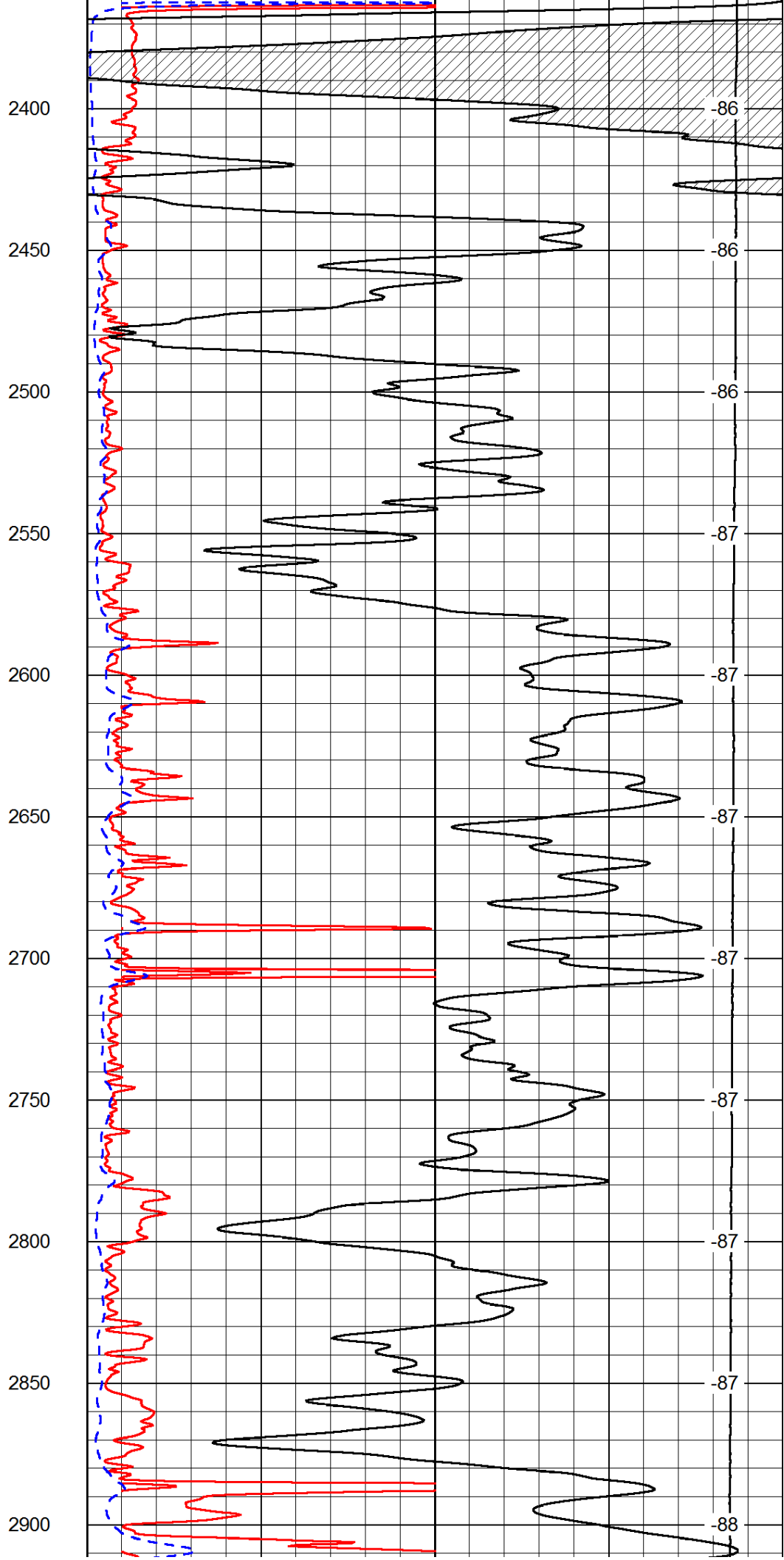
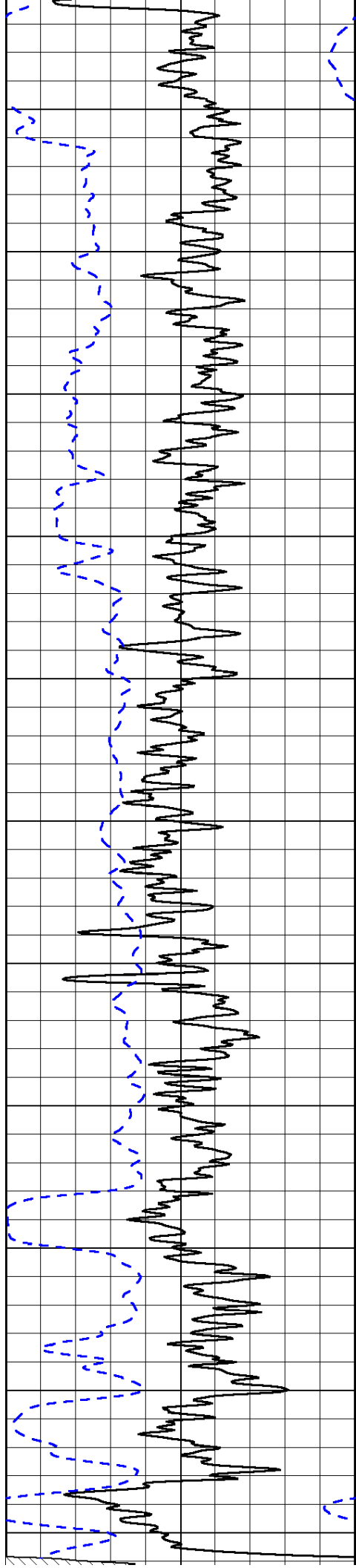
1000	Conductivity	0
15000	Line Tension	0

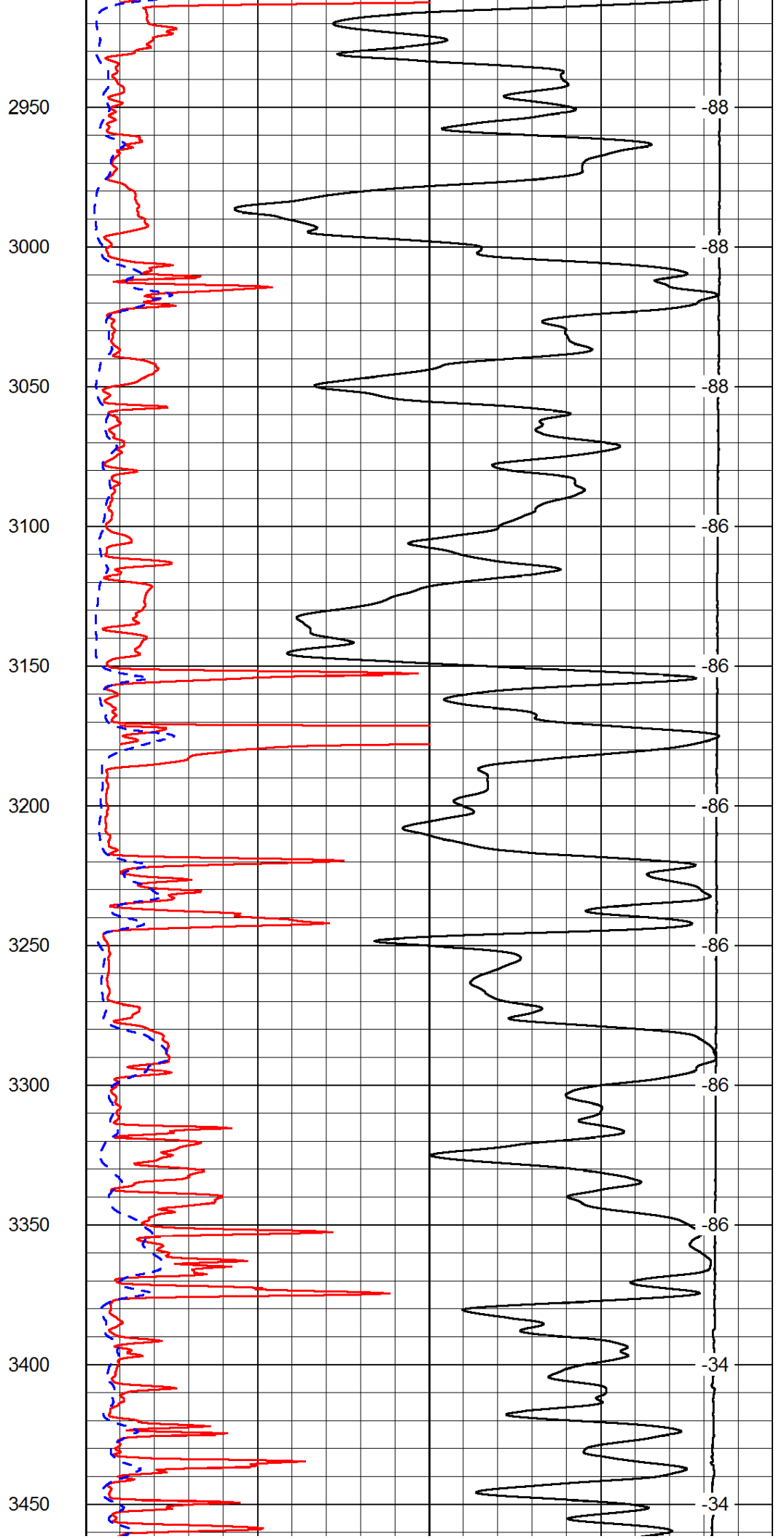
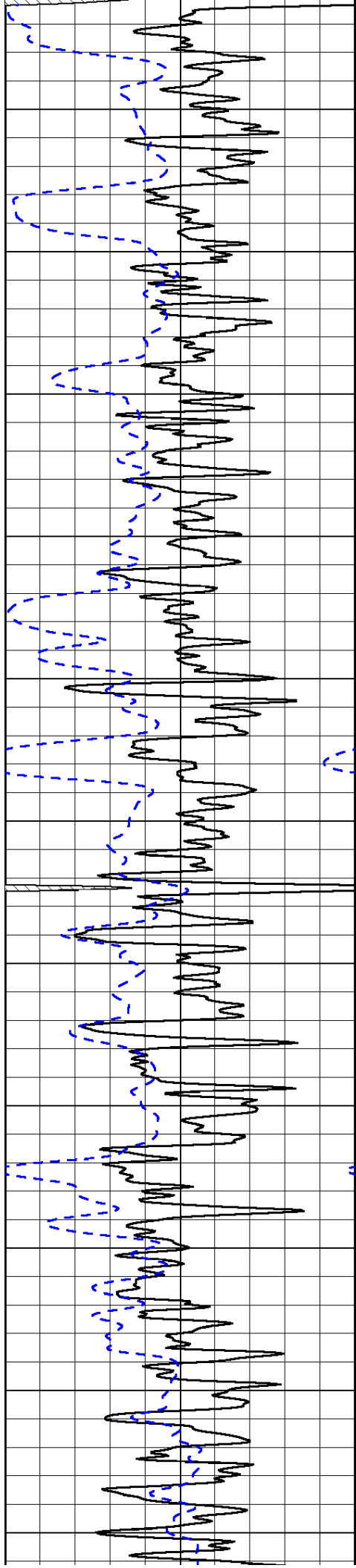
50	Shallow Resistivity	500
50	Deep Resistivity	500

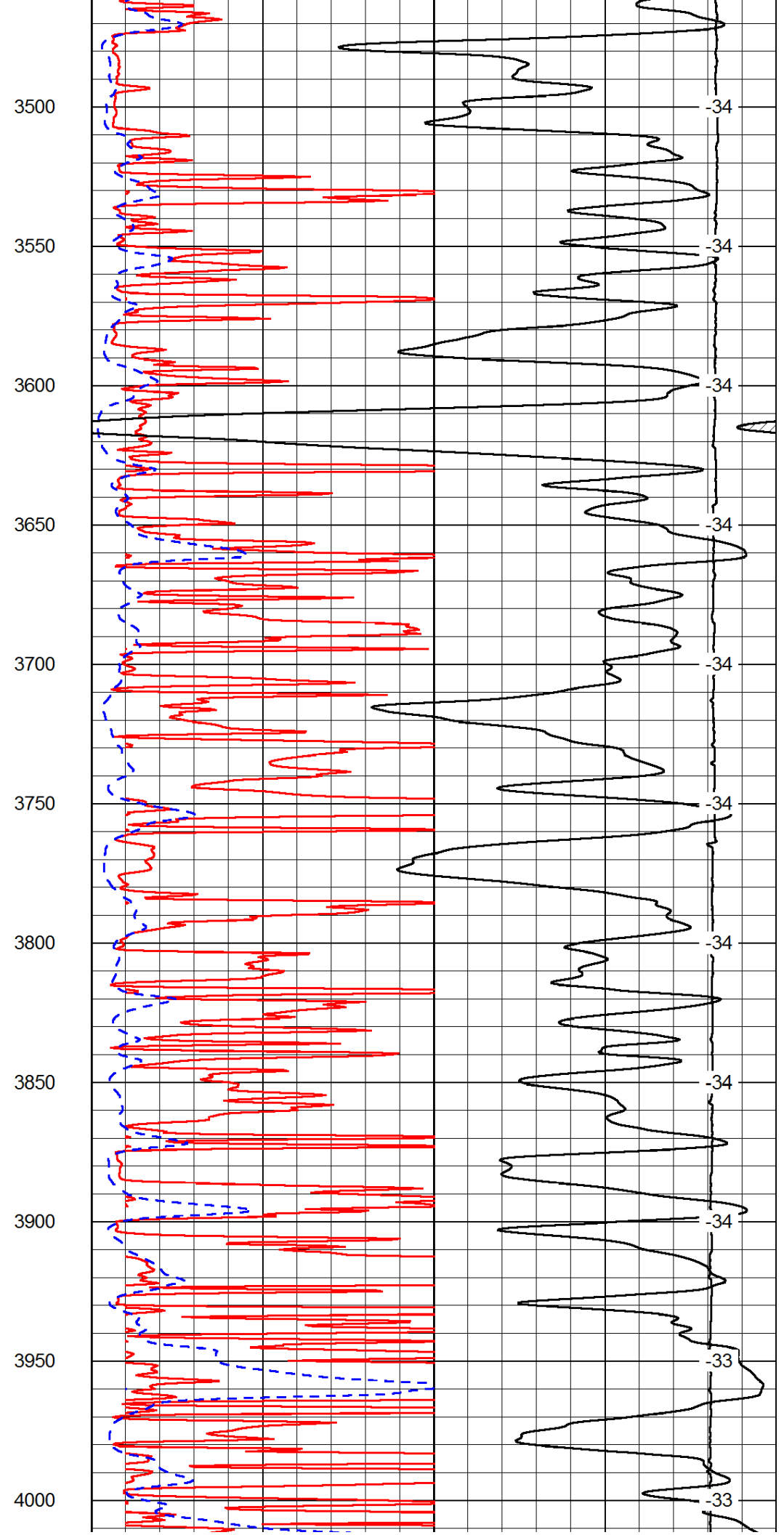
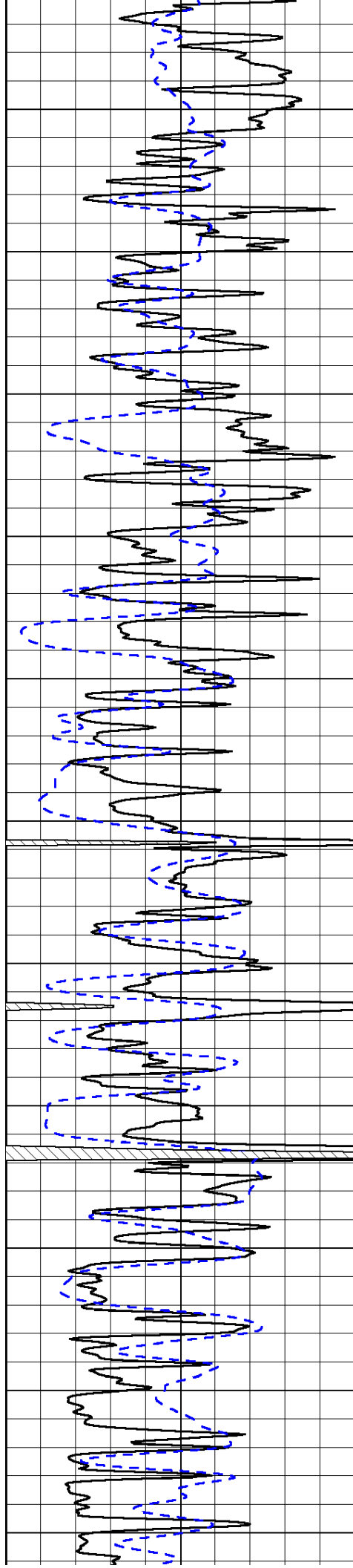


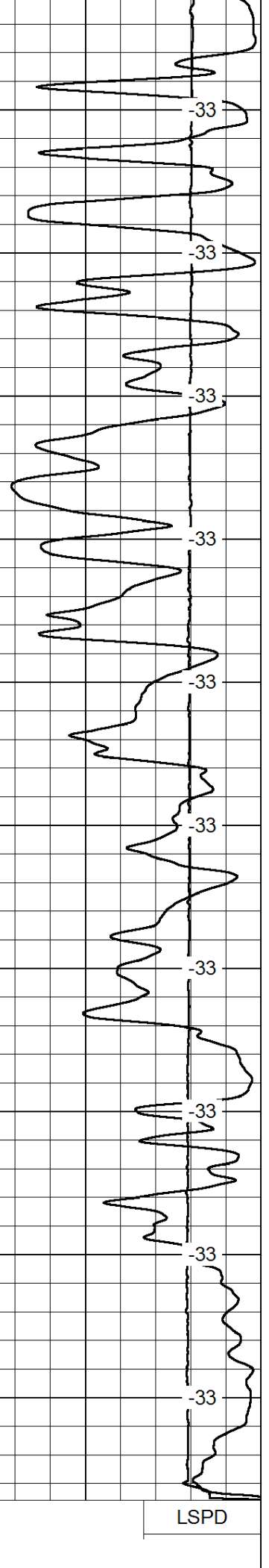
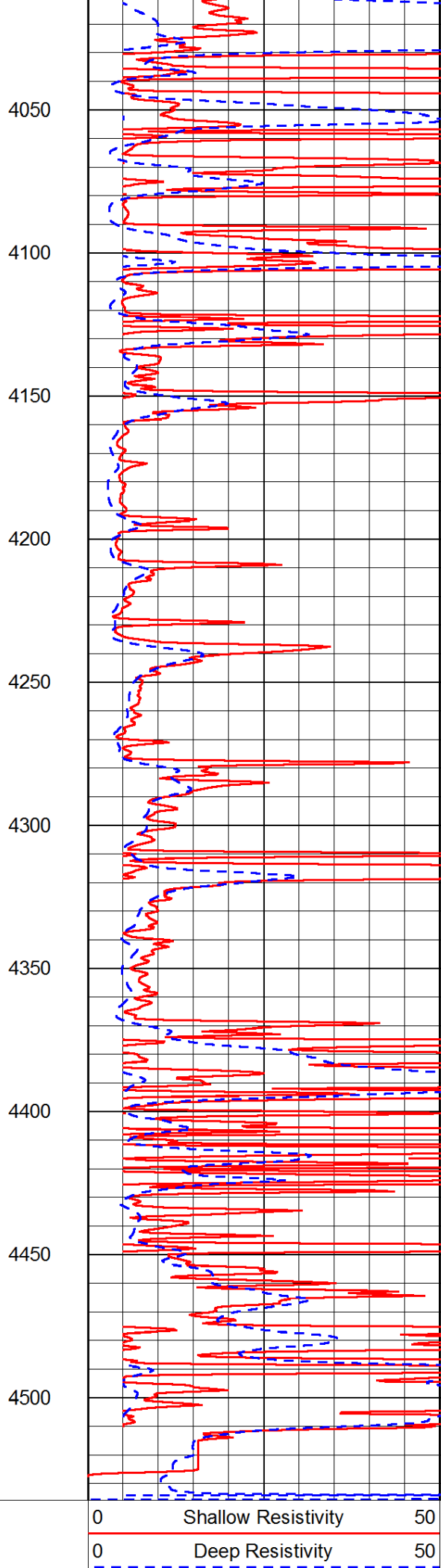
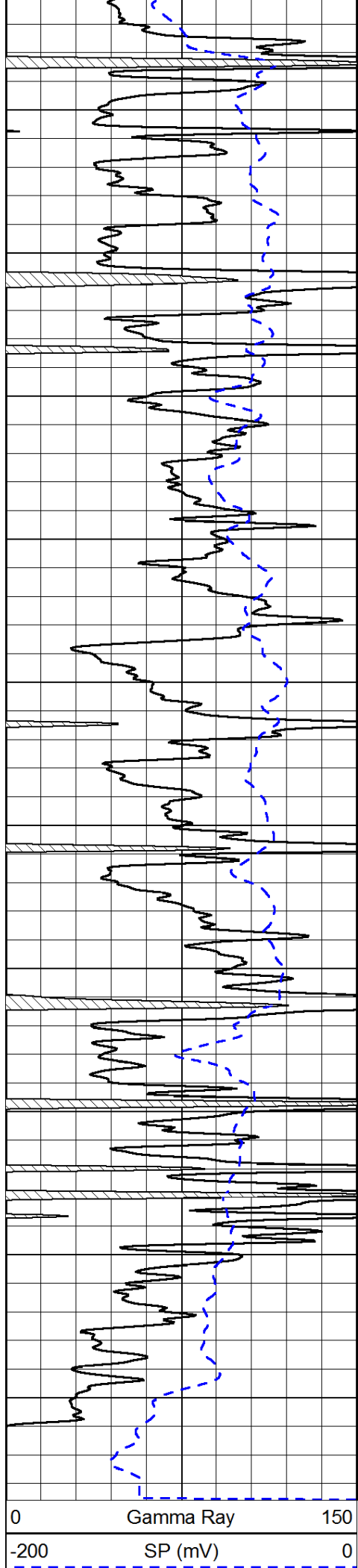








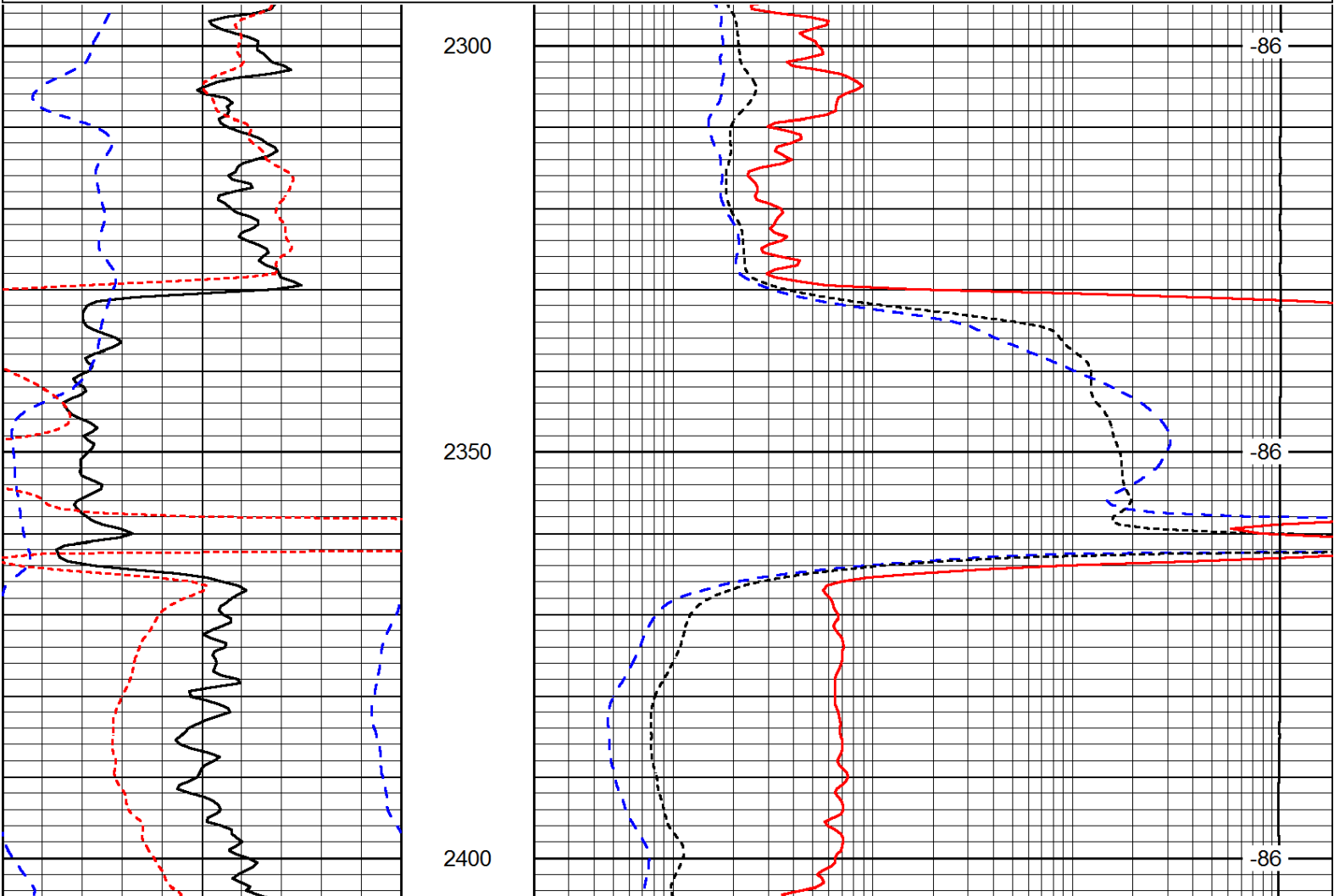




1000	Conductivity	0
15000	Line Tension	0
50	Shallow Resistivity	500
50	Deep Resistivity	500

Database File: c:\warrior\data\k-t oil exploration_windholz # 1\kt_oil_windholz_1hd.db
 Dataset Pathname: DIL/ktstk
 Presentation Format: dil
 Dataset Creation: Tue May 13 04:47:30 2014
 Charted by: Depth in Feet scaled 1:240

0	Gamma Ray	150	0.2	Deep Resistivity	2000
-200	SP (mV)	0	0.2	Medium Resistivity	2000
-160	RxoRt	40	0.2	Shallow Resistivity	2000
			15000	Line Tension	0
					LSPD



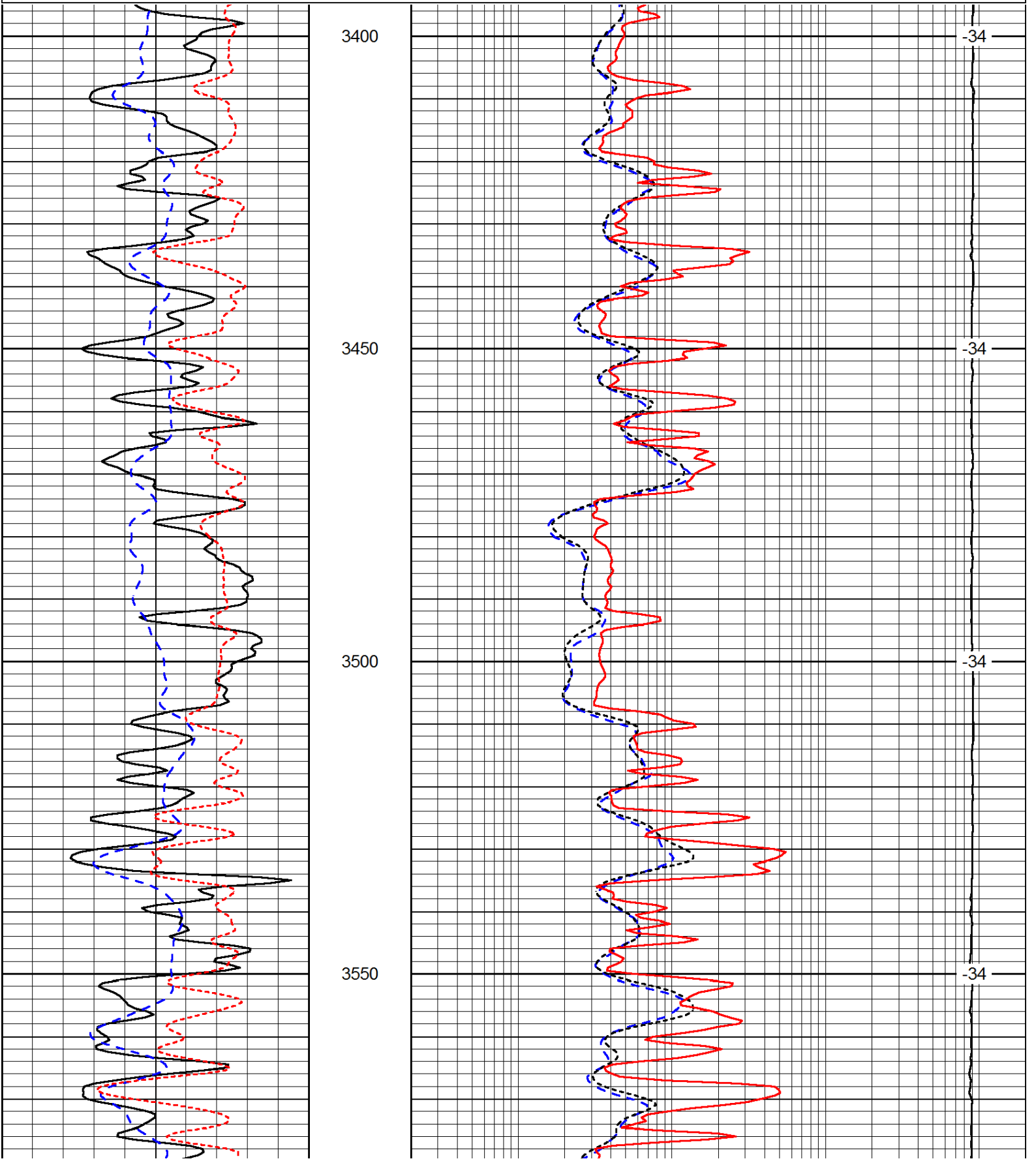
0	Gamma Ray	150	0.2	Deep Resistivity	2000
-200	SP (mV)	0	0.2	Medium Resistivity	2000
-160	RxoRt	40	0.2	Shallow Resistivity	2000
			15000	Line Tension	0
					LSPD

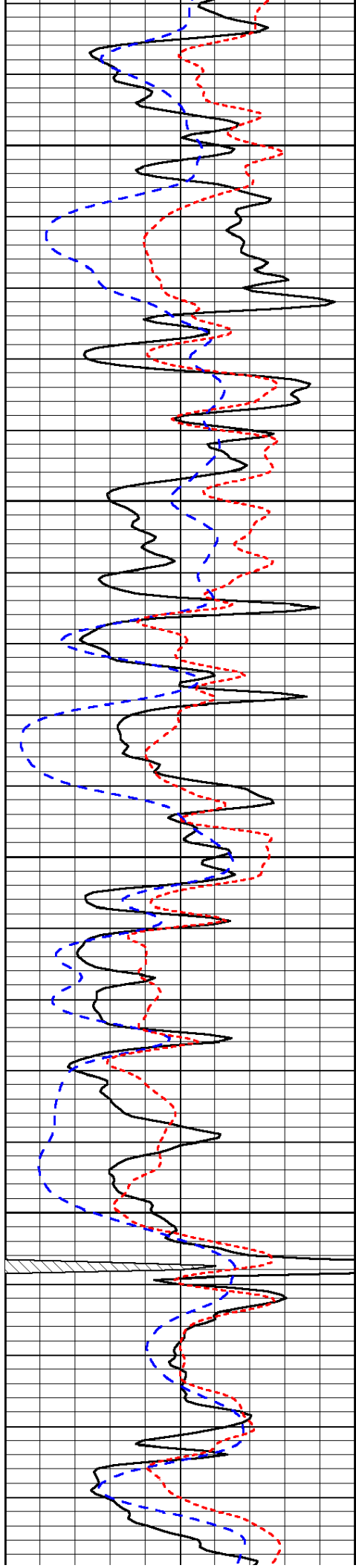
Database File: c:\warrior\data\k-t oil exploration_windholz # 1\kt_oil_windholz_1hd.db
 Dataset Pathname: DIL/ktstk
 Presentation Format: dil

0	Gamma Ray	150
-200	SP (mV)	0
-160	RxoRt	40

0.2	Deep Resistivity	2000
0.2	Medium Resistivity	2000
0.2	Shallow Resistivity	2000
15000	Line Tension	0

LSPD





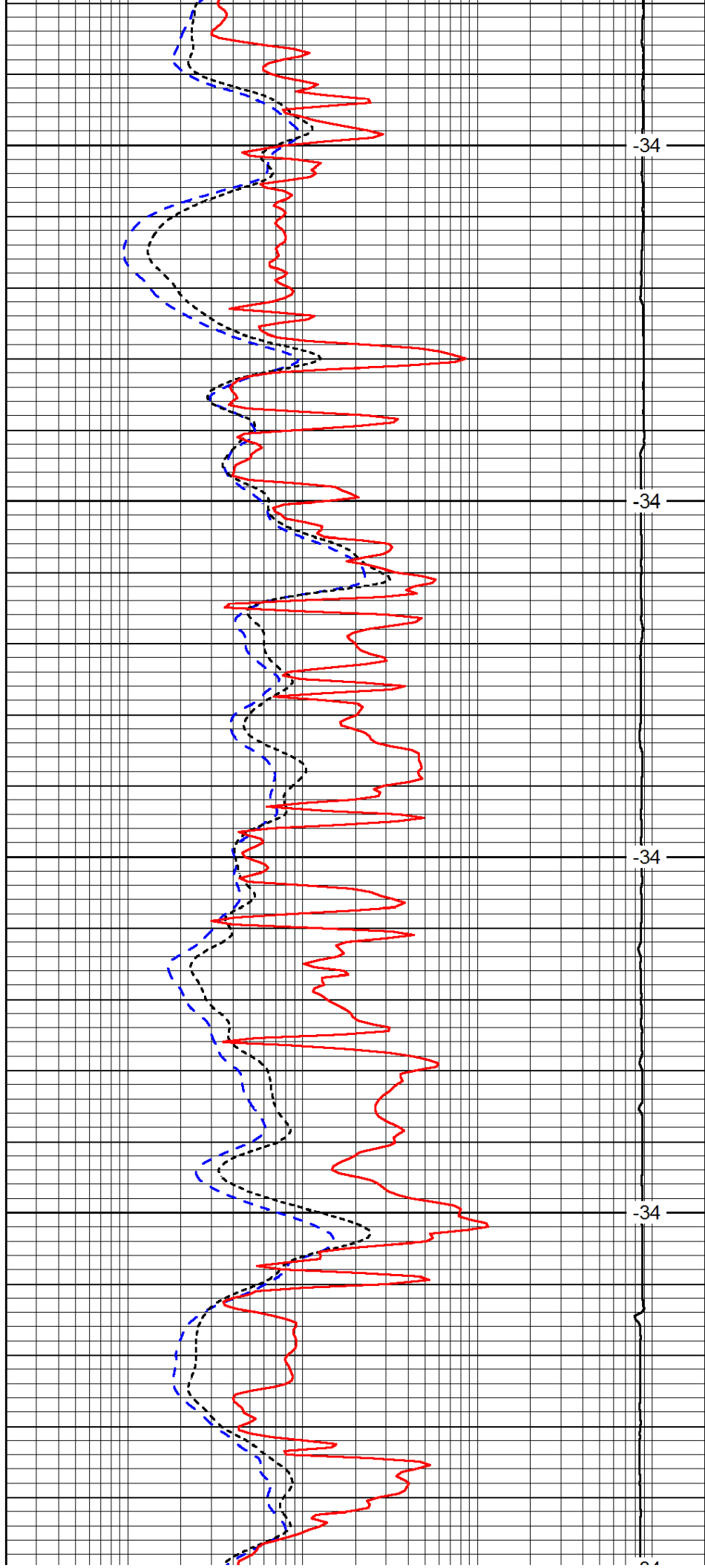
3600

3650

3700

3750

3800



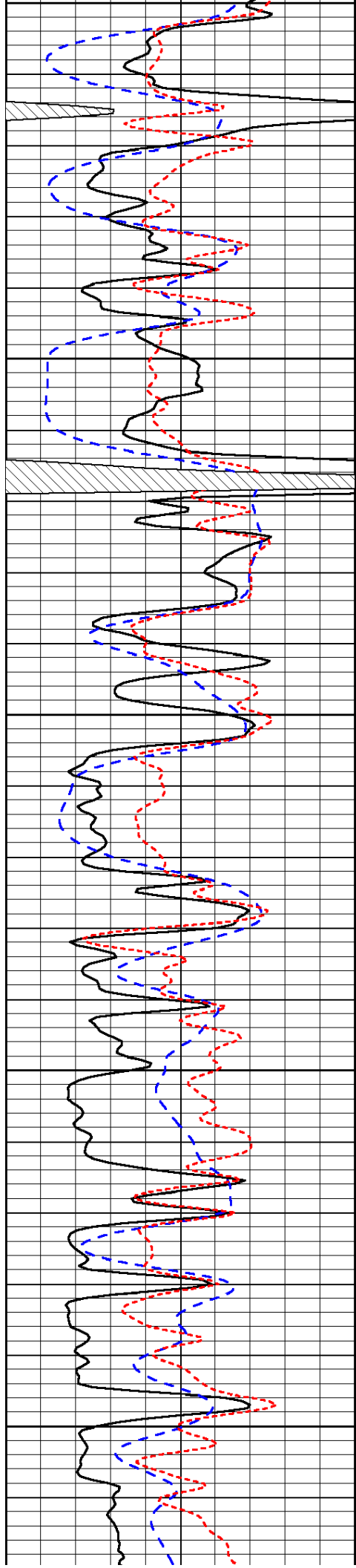
-34

-34

-34

-34

-34



3800

3850

3900

3950

4000

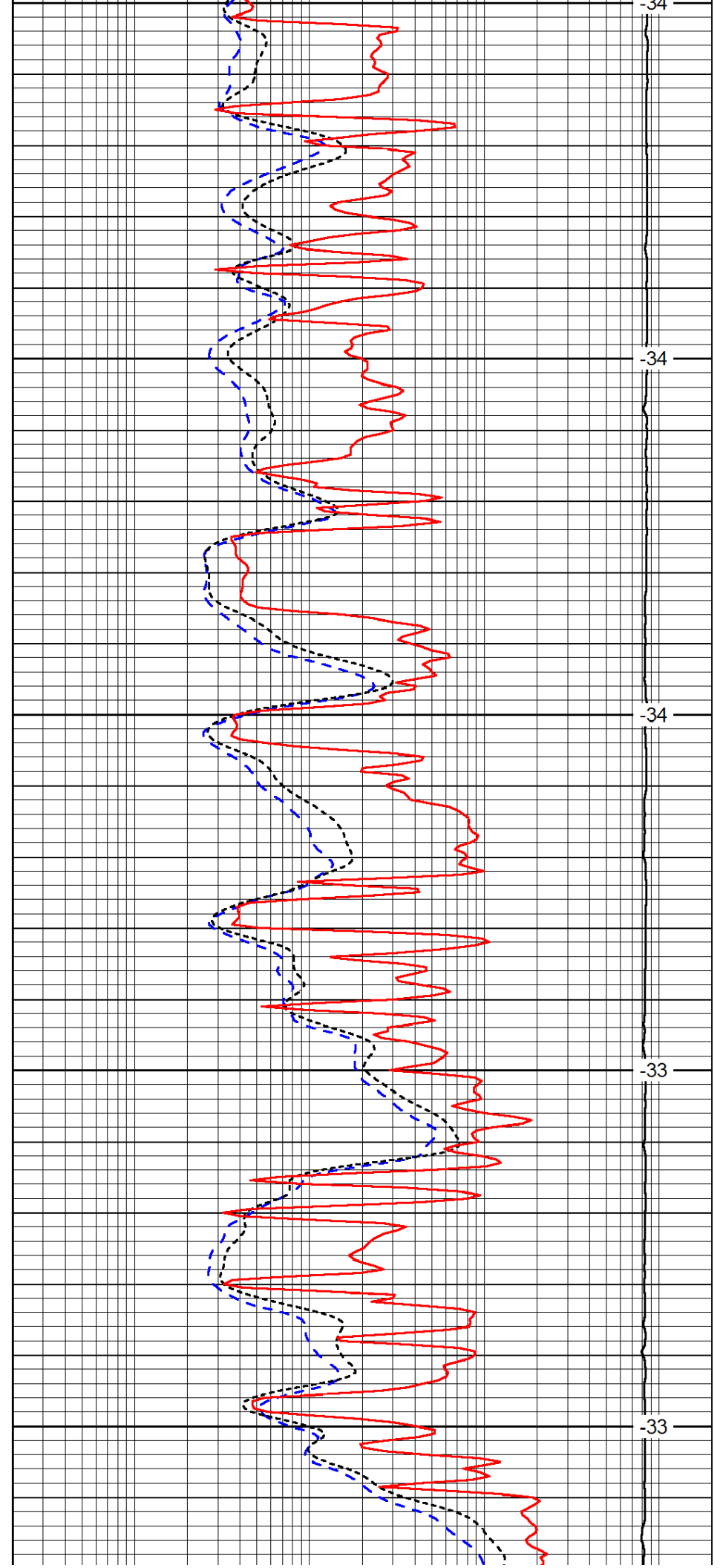
-34

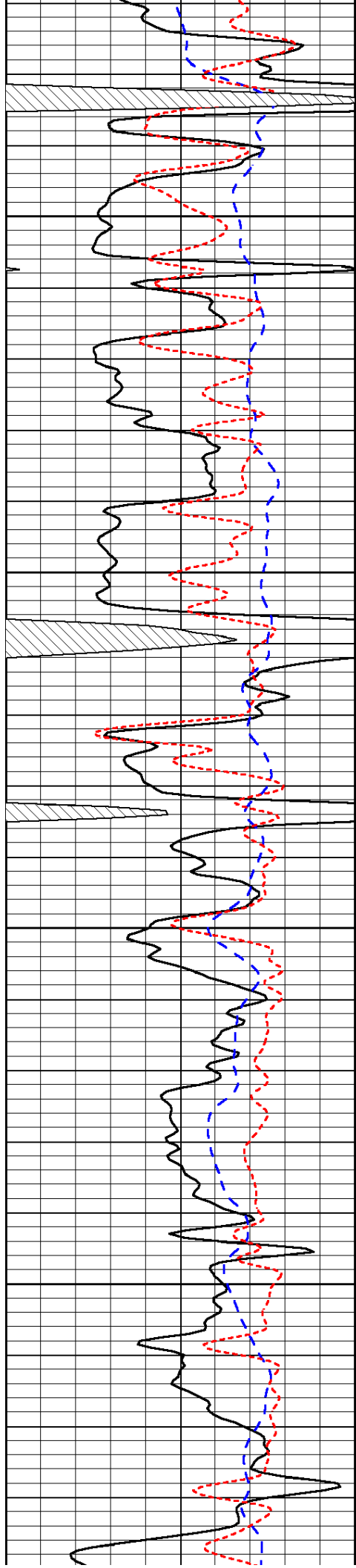
-34

-34

-33

-33



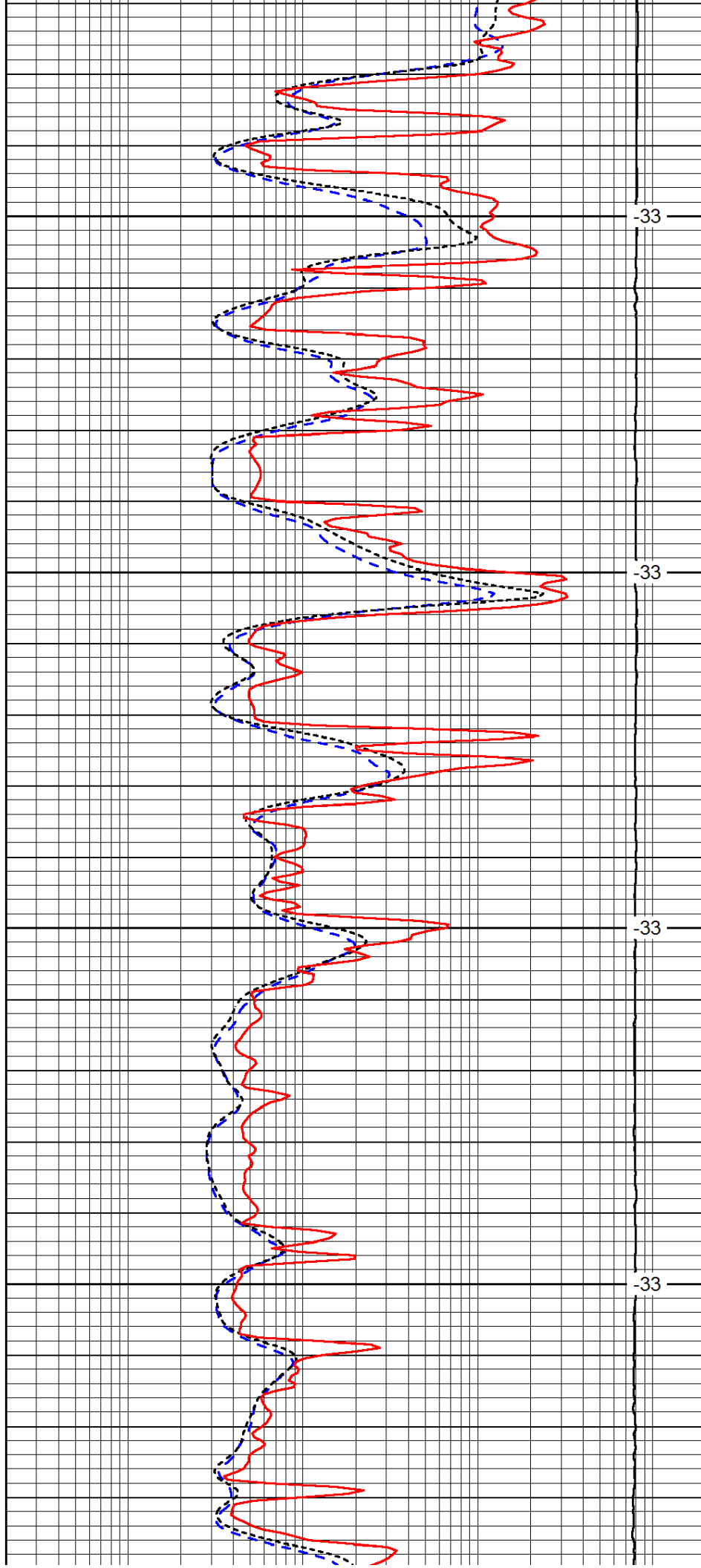


4050

4100

4150

4200

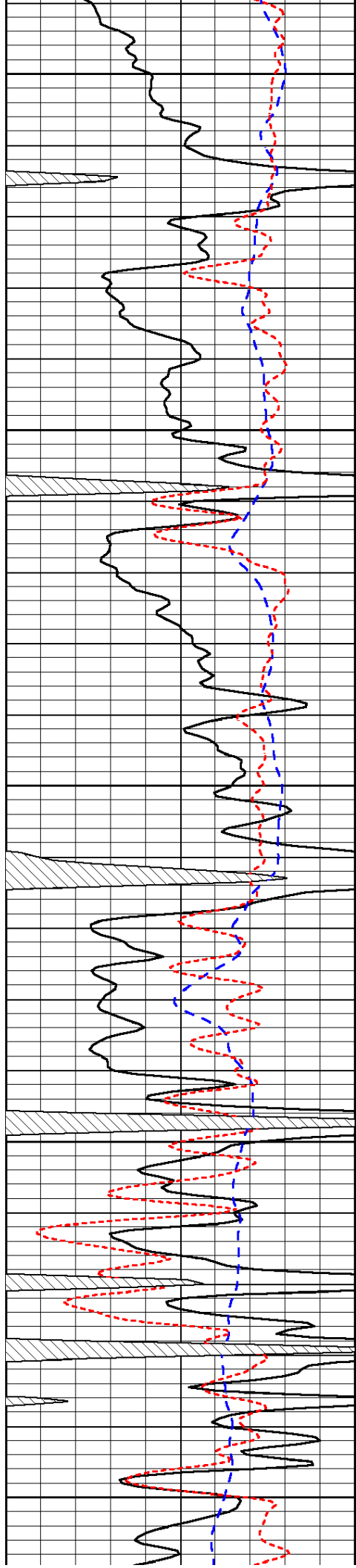


-33

-33

-33

-33



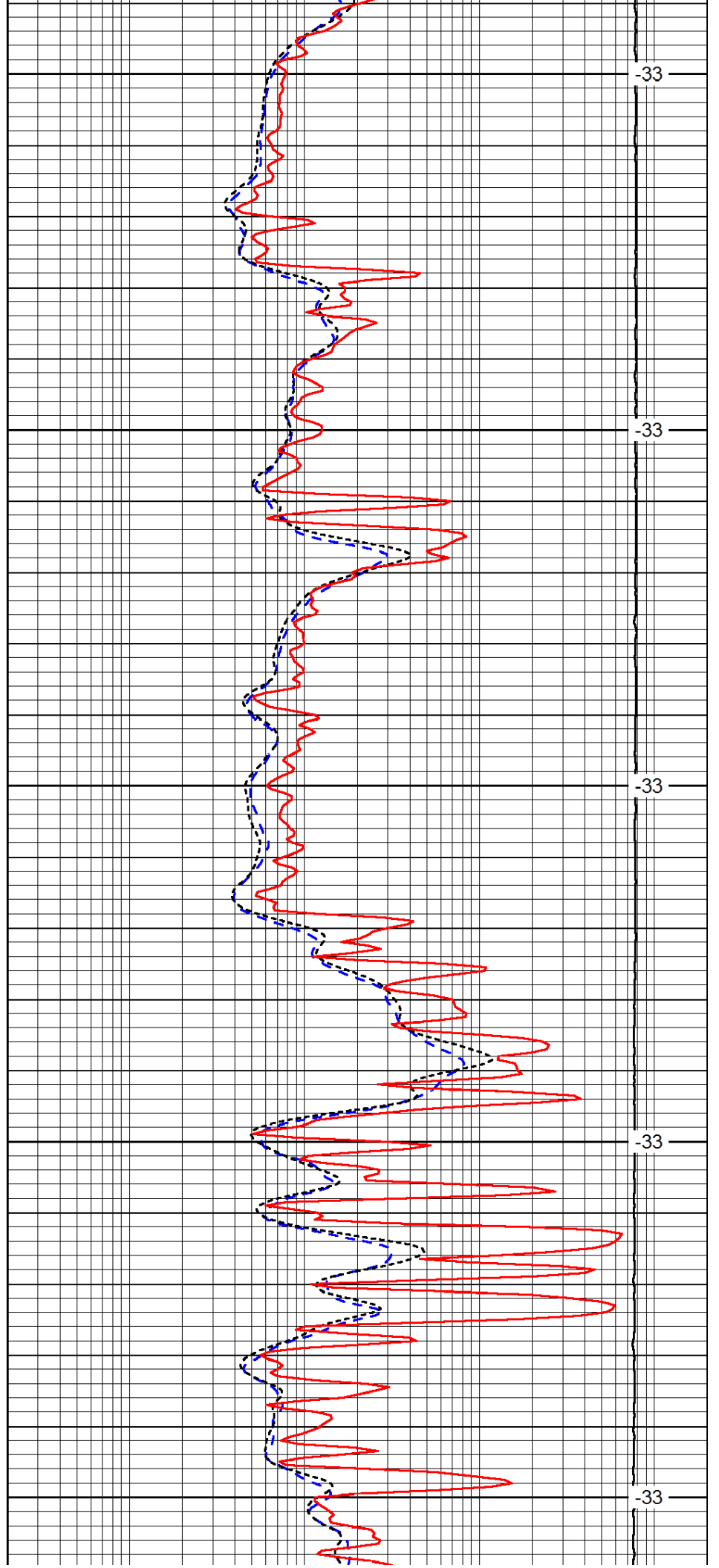
4250

4300

4350

4400

4450



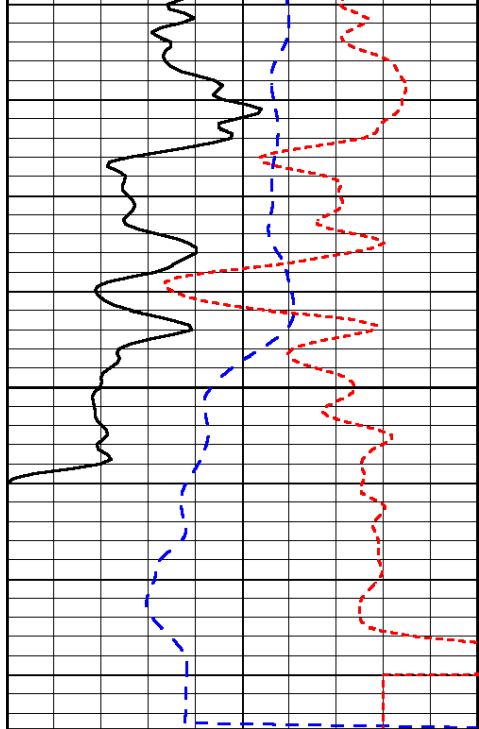
-33

-33

-33

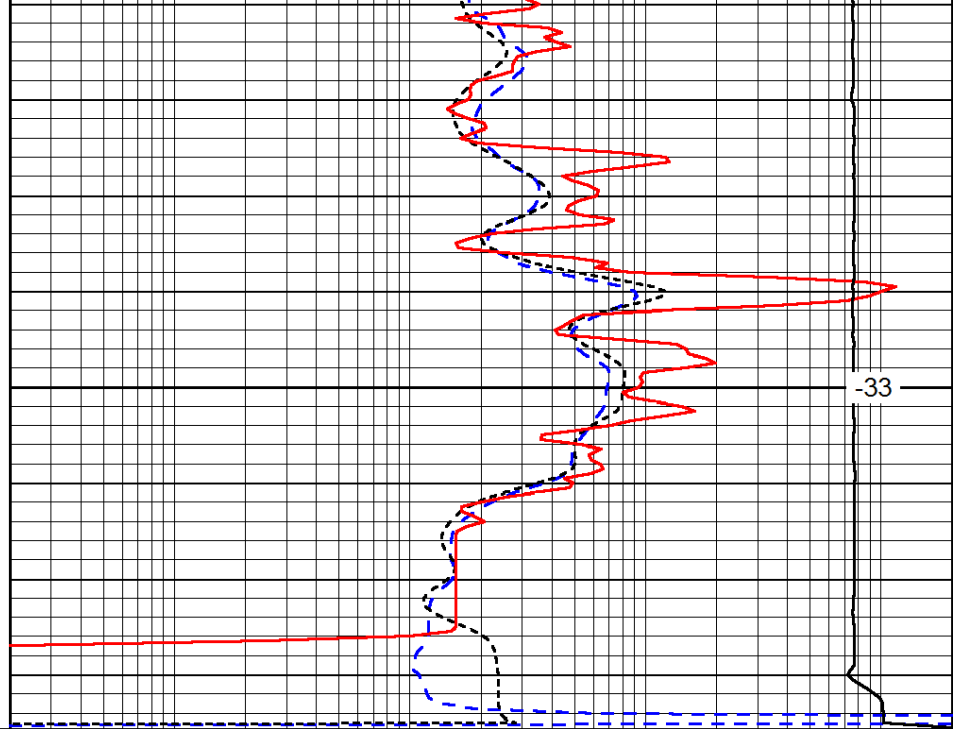
-33

-33



0	Gamma Ray	150
-200	SP (mV)	0
-160	RxoRt	40

4500



0.2	Deep Resistivity	2000
0.2	Medium Resistivity	2000
0.2	Shallow Resistivity	2000
15000	Line Tension	0

-33

LSPD