



Pioneer Energy Services

Dual Compensated Porosity Log

15-063-22,200-00-00

API No.

Company **K-T Oil Exploration & Leasing Co.**

Well **Windholz #1**

Field **Gove**

County **Gove** State **Kansas**

Location **NE-NW-SE-NW
1325' FNL & 1810' FWL**

Sec: **6** Twp: **11S** Rge: **28W**

Permanent Datum **Ground Level** Elevation **2777**
 Log Measured From **Kelly Bushing** **5** Ft. Above Perm. Datum
 Drilling Measured From **Kelly Bushing**

Other Services
DIL
MEL

Elevation
K.B. 2782
D.F.
G.L. 2777

Date	5/13/2014	
Run Number	One	
Type Log	CNL / CDL	
Depth Driller	4530	
Depth Logger	4530	
Bottom Logged Interval	4509	
Top Logged Interval	3400	
Type Fluid In Hole	Chemical	
Salinity, PPM CL	1,000	
Density	9.4	
Level	Full	
Max. Rec. Temp. F	121	
Operating Rig Time	4 Hours	
Equipment -- Location	108 Hays	
Recorded By	J. Henrickson	
Witnessed By	Tony Richardson	

Borehole Record			Casing Record			
Run No.	Bit From	To	Size	Wgt.	From	To
1	12.25	00	263	8.625	24#	00
2	7.875	263	4530			263

<<< Fold Here >>>

All interpretations are opinions based on inferences from electrical or other measurements and we cannot and do not guarantee the accuracy or correctness of any interpretation, and we shall not, except in the case of gross or willful negligence on our part, be liable or responsible for any loss, costs, damages, or expenses incurred or sustained by anyone resulting from any interpretation made by any of our officers, agents or employees. These interpretations are also subject to our general terms and conditions set out in our current Price Schedule.

Comments

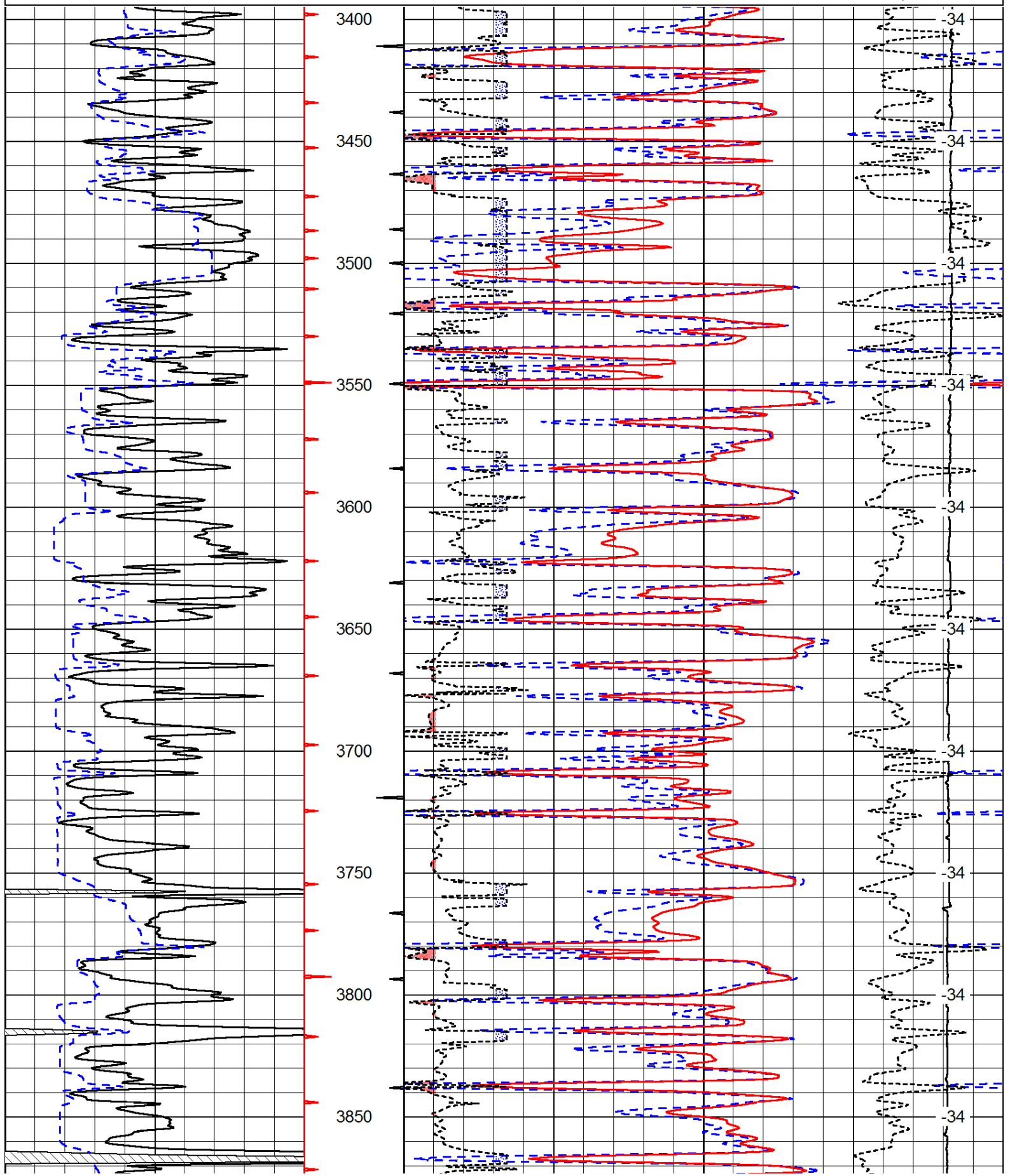
Thank you for using Pioneer Energy Services
www.pioneerres.com
 785 625 3858

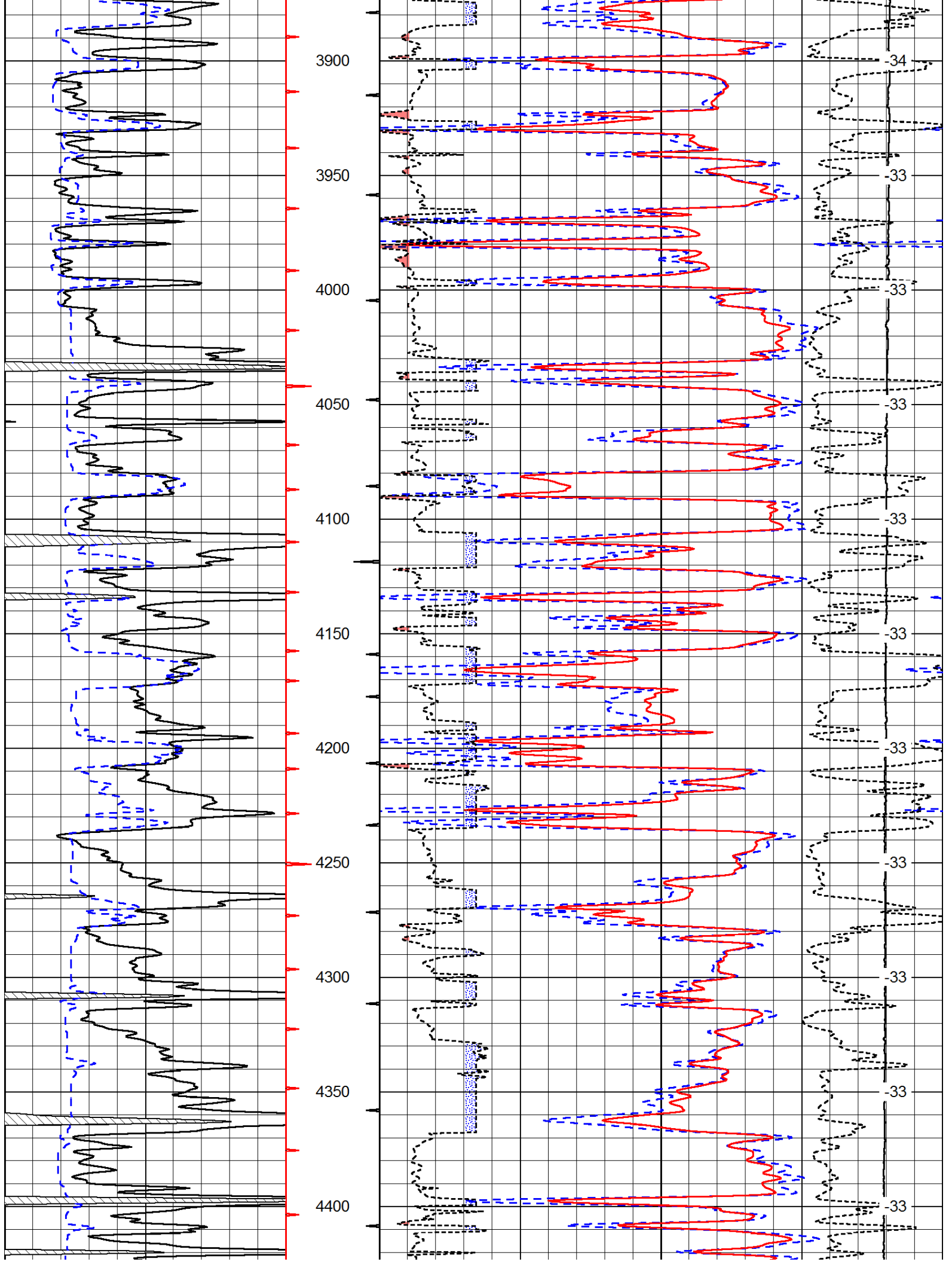
 Grainfield Kansas
 1/2 North to DD Rd, 3/4 North, East Into

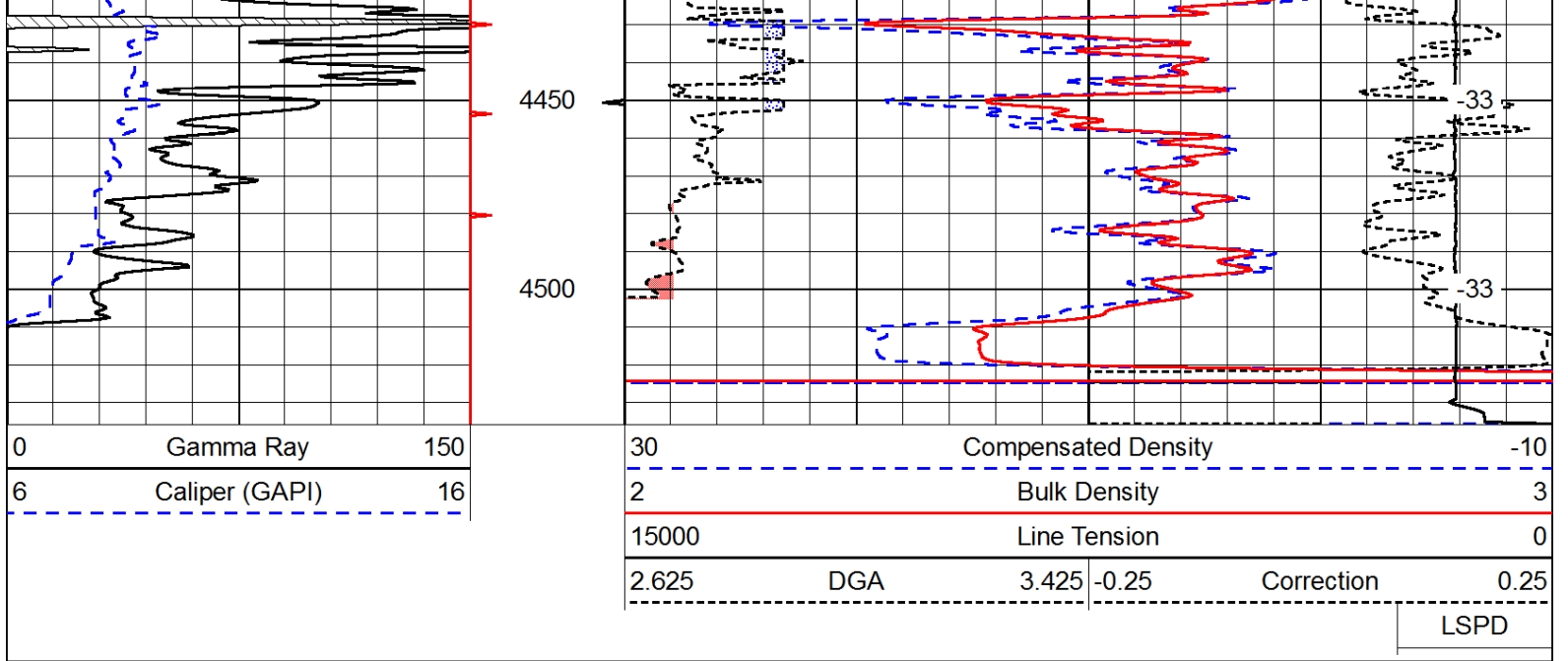
Database File: c:\warrior\data\k-t oil exploration_windholz # 1\kt_oil_windholz_1hd.db
 Dataset Pathname: DIL/ktstk
 Presentation Format: cdl
 Dataset Creation: Tue May 13 04:47:30 2014
 Charted by: Depth in Feet scaled 1:600

0	Gamma Ray	150
6	Caliper (GAPI)	16

30	Compensated Density		-10
2	Bulk Density		3
15000	Line Tension		0
2.625	DGA	3.425	-0.25
Correction			0.25
LSPD			







Database File: c:\warrior\data\k-t oil exploration_windholz # 1\kt_oil_windholz_1hd.db
 Dataset Pathname: DIL/ktstk
 Presentation Format: cndlspec
 Dataset Creation: Tue May 13 04:47:30 2014
 Charted by: Depth in Feet scaled 1:240

