



Pioneer Energy Services

Microresistivity Log

15-063-22,200-00-00

API No.

Company **K-T Oil Exploration & Leasing Co.**

Well **Windholz #1**

Field

County

Gove

State

Kansas

Location

**NE-NW-SE-NW
1325' FNL & 1810' FWL**

Sec: **6**

Twp: **11S**

Rge: **28W**

Permanent Datum
Log Measured From
Drilling Measured From

Ground Level
Kelly Bushing
From Kelly Bushing

Elevation
5 Ft. Above Perm. Datum

Other Services
CNL/CDL
DIL

Elevation
K.B. 2782
D.F. 2777
G.L. 2777

Date

5/13/2014

Run Number

Two

Depth Driller

4530

Depth Logger

4530

Bottom Logged Interval

4529

Top Log Interval

3400

Casing Driller

8.625 @ 263

Casing Logger

261

Bit Size

7.875

Type Fluid in Hole

Chemical

Salinity, ppm CL

1,000

Density / Viscosity

9.4 49

pH / Fluid Loss

9.0 12.8

Source of Sample

Flowline

Rm @ Meas. Temp

1.10 @ 64

Rmf @ Meas. Temp

.83 @ 64

Rmc @ Meas. Temp

1.49 @ 64

Source of Rmf / Rmc

Charts

Rm @ BHT

.58 @ 121

Operating Rig Time

4 Hours

Max Rec. Temp. F

121

Equipment Number

108

Location

Hays

Recorded By

J. Hennickson

Witnessed By

Tony Richardson

<<< Fold Here >>>

All interpretations are opinions based on inferences from electrical or other measurements and we cannot and do not guarantee the accuracy or correctness of any interpretation, and we shall not, except in the case of gross or willful negligence on our part, be liable or responsible for any loss, costs, damages, or expenses incurred or sustained by anyone resulting from any interpretation made by any of our officers, agents or employees. These interpretations are also subject to our general terms and conditions set out in our current Price Schedule.

Comments

Thank you for using Pioneer Energy Services
www.pioneerenergy.com
785 625 3858

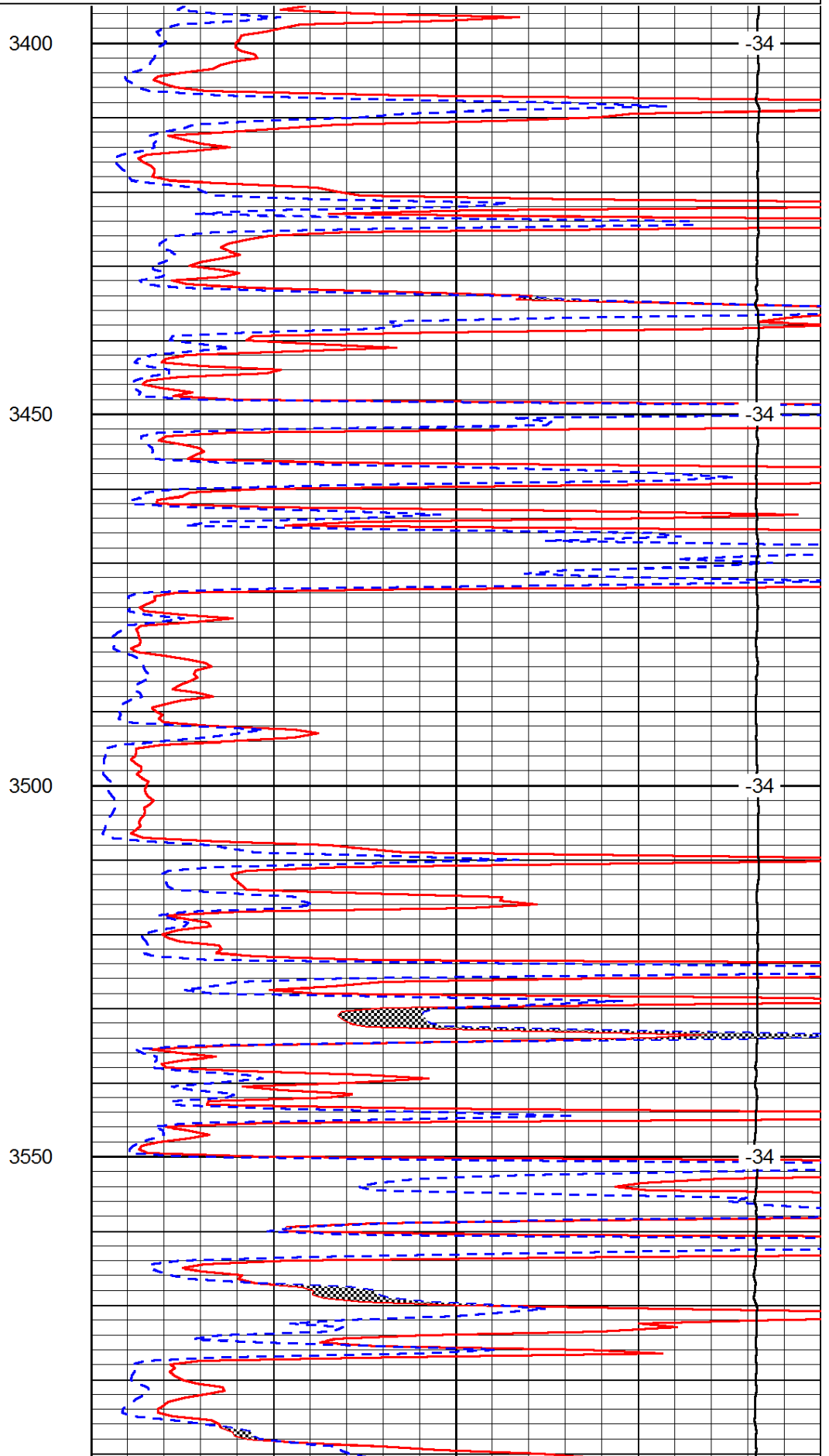
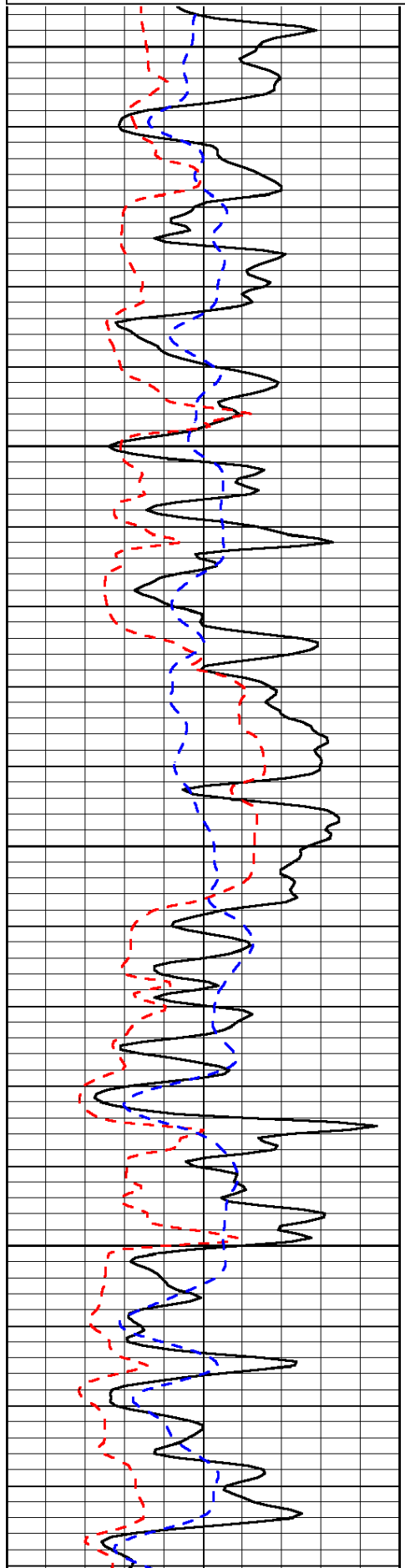
Grainfield Kansas
1/2 North to DD Rd, 3/4 North, East Into

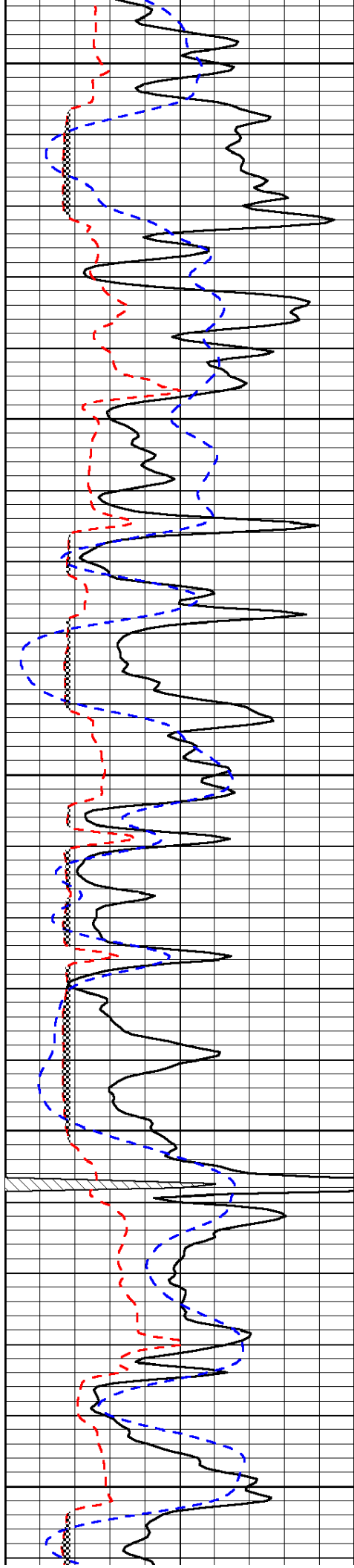
Database File: c:\warrior\data\k-t oil exploration_windholz # 1\kt_oil_windholz_1hd.db
Dataset Pathname: DIL/ktstk
Presentation Format: micro
Dataset Creation: Tue May 13 04:47:30 2014
Charted by: Depth in Feet scaled 1:240

0	Gamma Ray	150
6	Micro Log Caliper (GAPI)	16
-200	SP (mV)	0

0	Micro Inverse 1 X 1	40
0	Micro Normal 2"	40
15000	Line Weight	0

LSPD





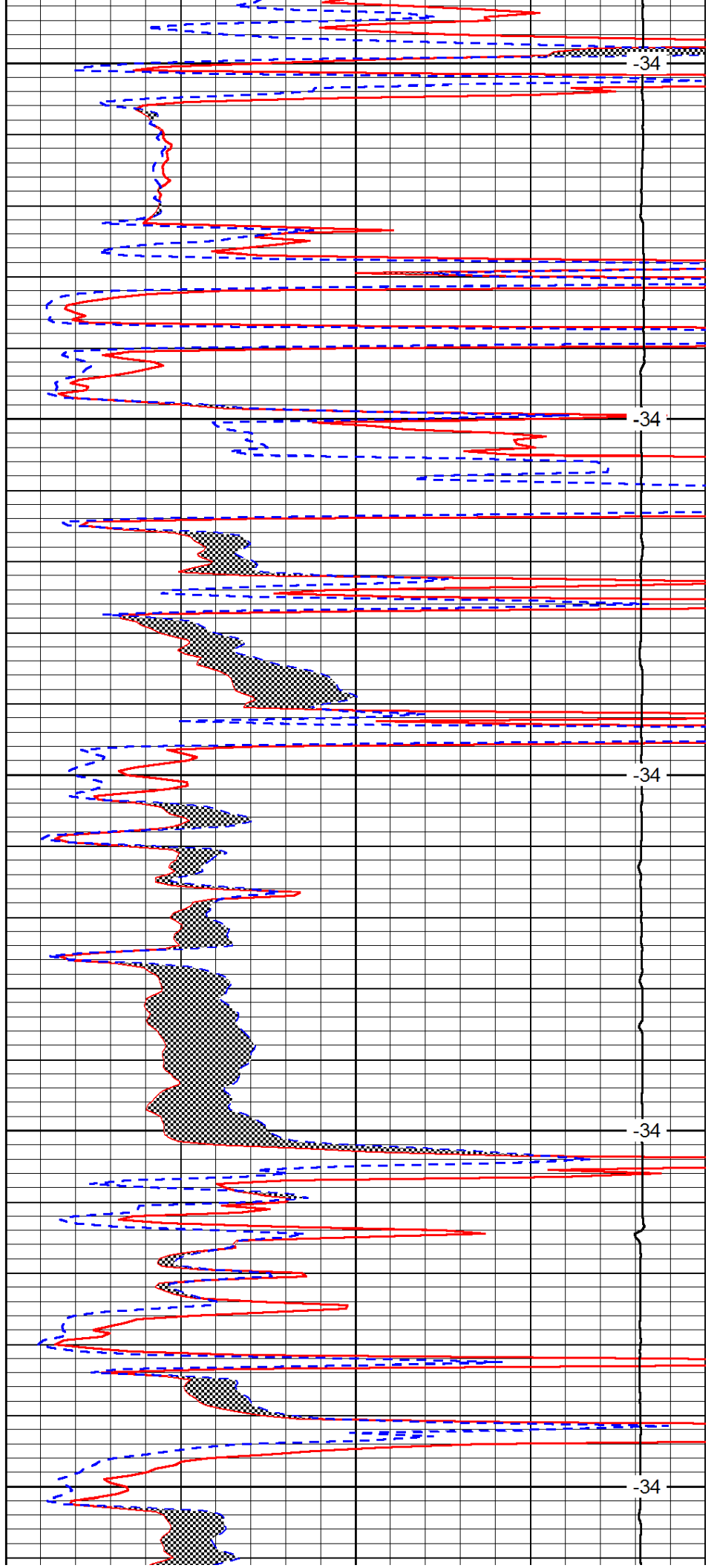
3600

3650

3700

3750

3800



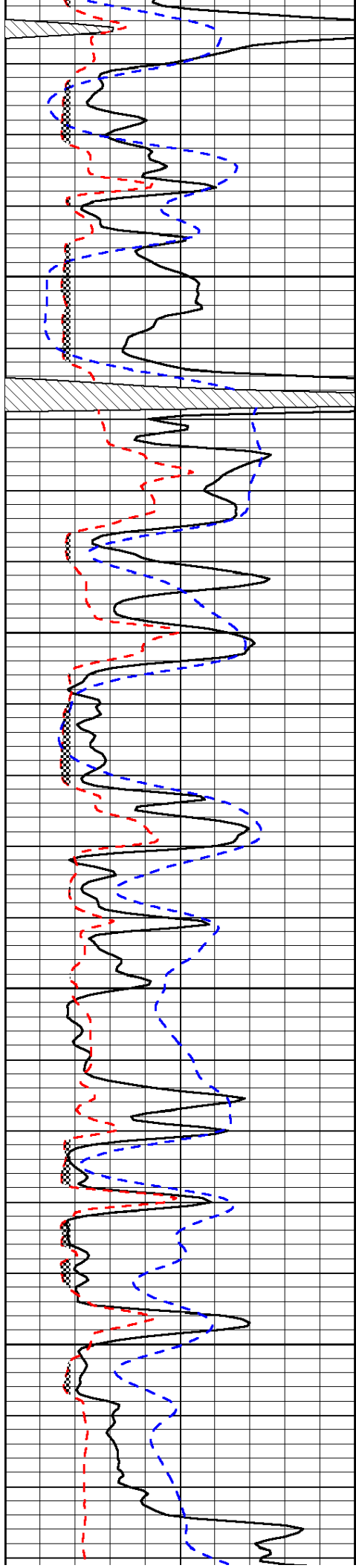
-34

-34

-34

-34

-34

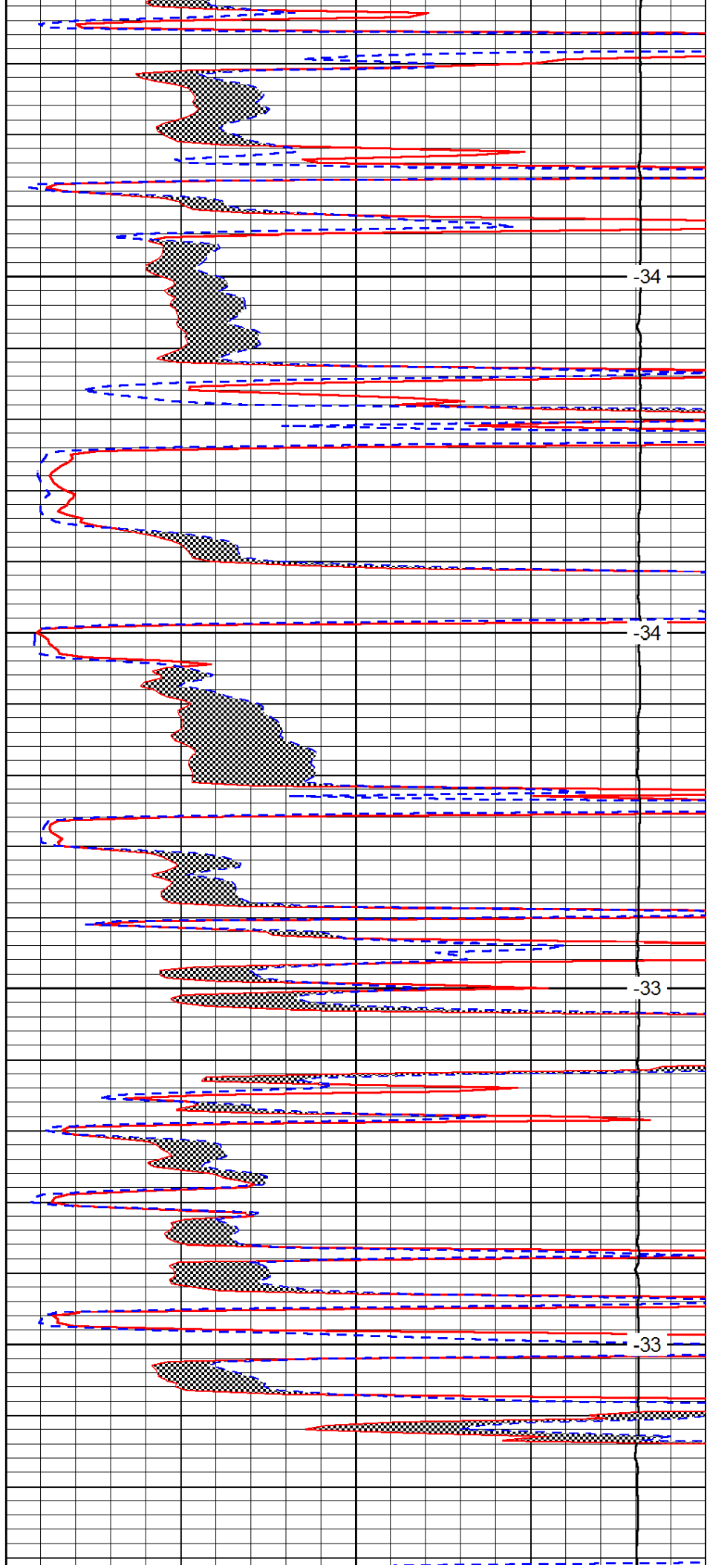


3850

3900

3950

4000

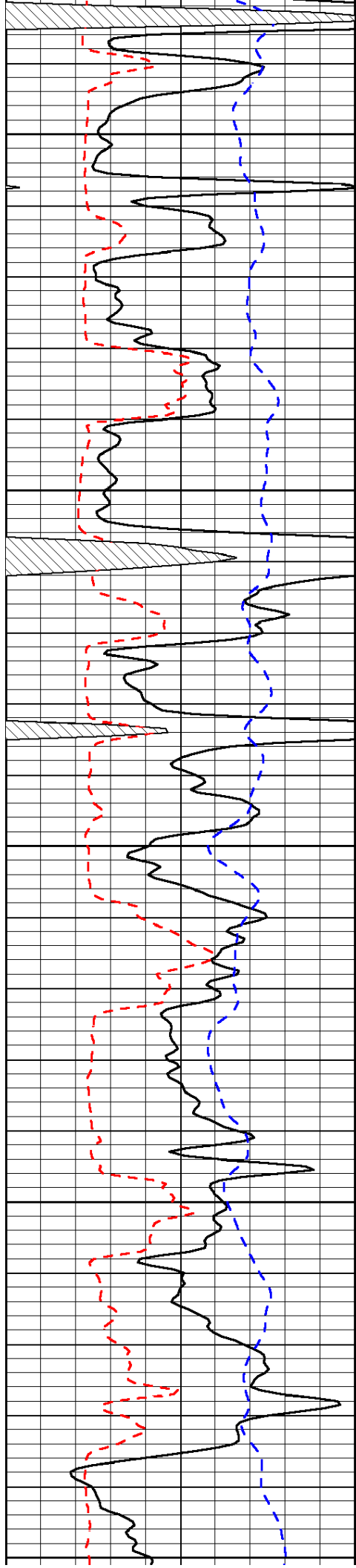


-34

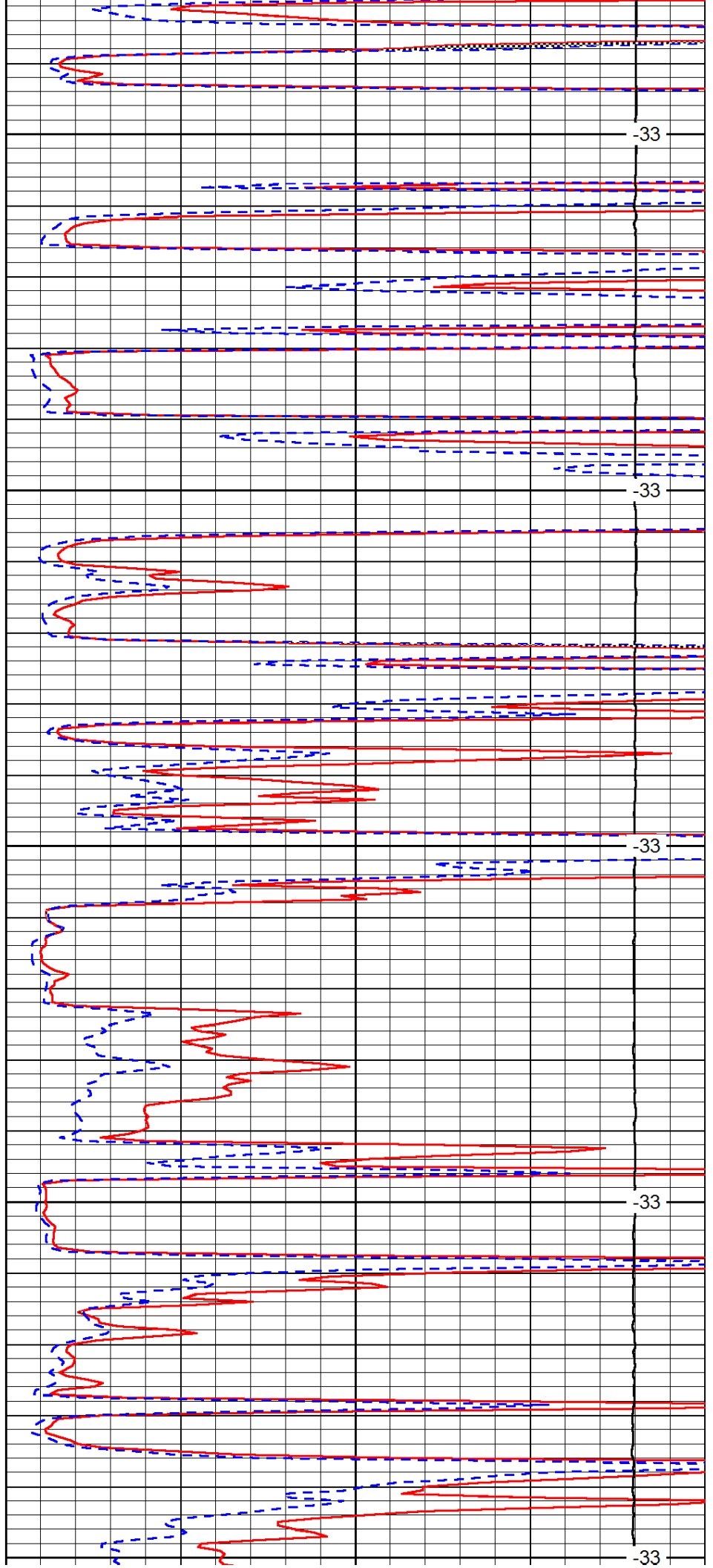
-34

-33

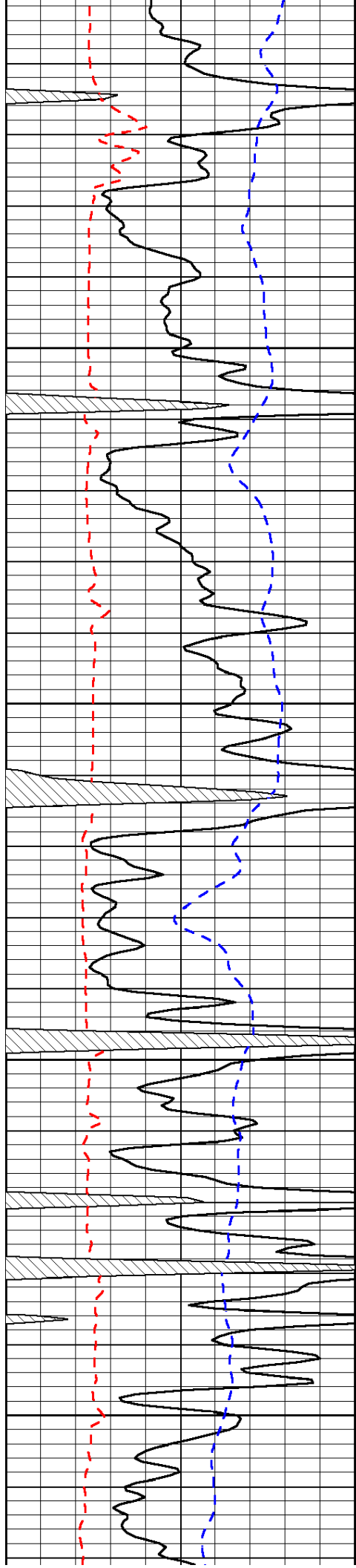
-33



4050
4100
4150
4200
4250



-33
-33
-33
-33
-33

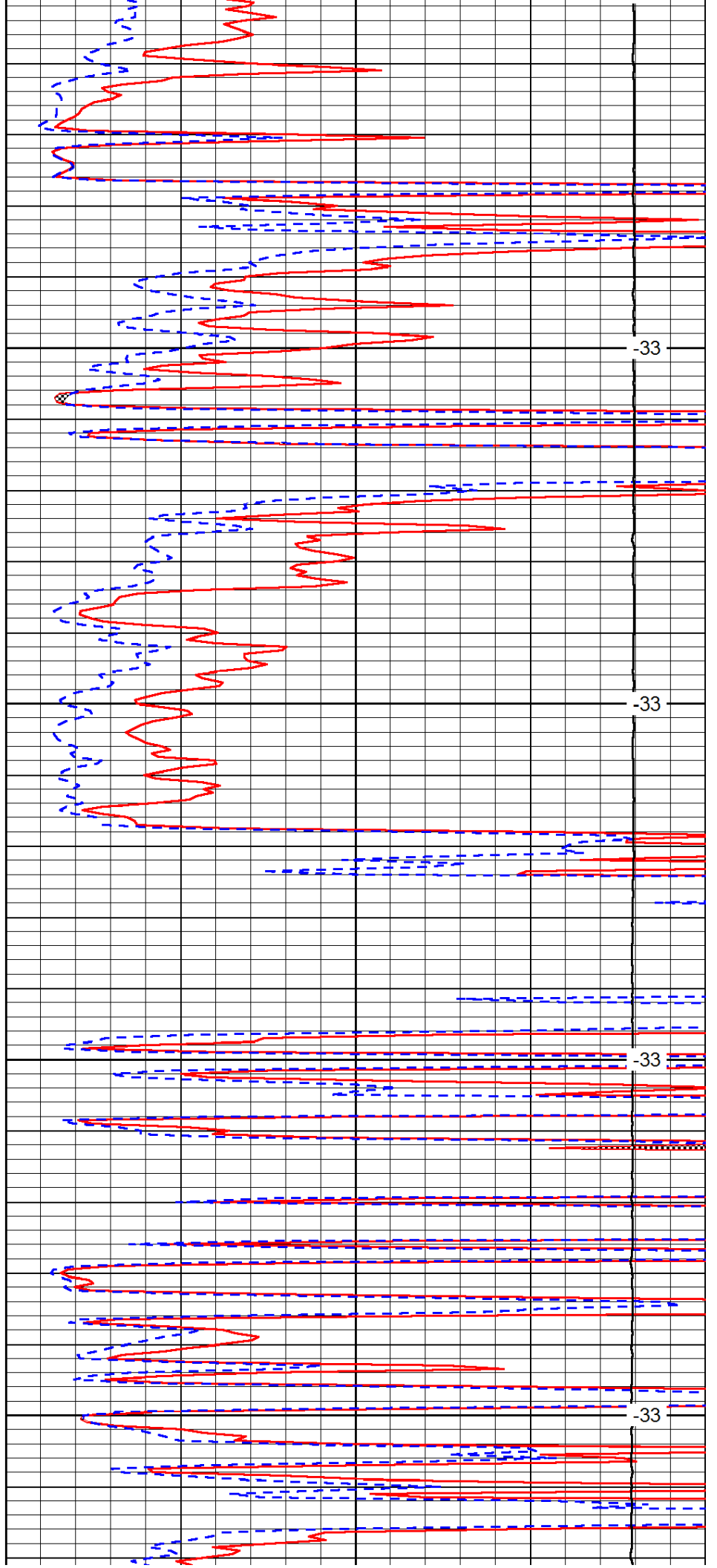


4300

4350

4400

4450

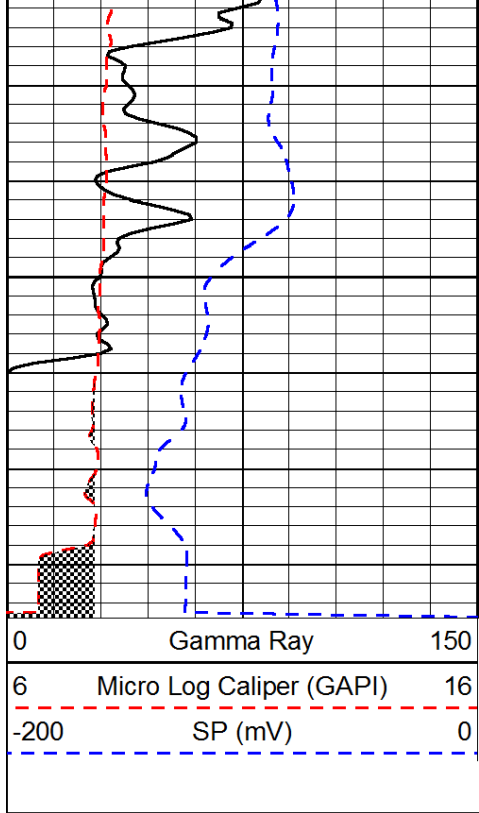


-33

-33

-33

-33



4500

