



Casedhole Solutions

MICRO LOG

Company L.D. DRILLING, INC.
 Well #1 YORK 25C
 Field WILDCAT
 County GOVE
 State KANSAS

Company L.D. DRILLING, INC.
 Well #1 YORK 25C
 Field WILDCAT
 County GOVE State KANSAS

Location: 18151 FSL & 2310' FWL
 API # : 15-063-22281-0000
 Permanent Datum GROUND LEVEL Elevation 2722
 Log Measured From KELLY BUSHING 5' A.G.L.
 Drilling Measured From KELLY BUSHING
 SEC 25 TWP 15S RGE 31W
 Other Services CDL/CNL DIL
 Elevation K.B. 2727
 D.F. 2725
 G.L. 2722

Date	1/17/16
Run Number	TWO
Depth Driller	4507
Depth Logger	4509
Bottom Logged Interval	4507
Top Log Interval	3300
Casing Driller	8 5/8" @ 347
Casing Logger	326
Bit Size	7 7/8"
Type Fluid in Hole	CHEMICAL MUD
Density / Viscosity	9.1/59
pH / Fluid Loss	10.5/6.8
Source of Sample	FLOWLINE
Rm @ Meas. Temp	1.2 @ 40F
Rmt @ Meas. Temp	.90 @ 40F
Rmc @ Meas. Temp	1.4 @ 40F
Source of Rmf / Rmc	MEASUREMENT
Rm @ BHT	.40 @ 120F
Time Circulation Stopped	2 HOURS
Time Logger on Bottom	
Maximum Recorded Temperature	120F
Equipment Number	4010
Location	HAYS, KANSAS
Recorded By	JASON CAPPELLUCCI
Witnessed By	KIM SHOEMAKER

<<< Fold Here >>>

All interpretations are opinions based on inferences from electrical or other measurements and we cannot and do not guarantee the accuracy or correctness of any interpretation, and we shall not, except in the case of gross or willful negligence on our part, be liable or responsible for any loss, costs, damages, or expenses incurred or sustained by anyone resulting from any interpretation made by any of our officers, agents or employees. These interpretations are also subject to our general terms and conditions set out in our current Price Schedule.

Comments

THANK YOU FOR USING CASEDHOLE SOLUTIONS, HAYS, KS. (785) 628-6395
 DIRECTIONS:
 HEALY, KS. - 1 WEST TO BISON RD. - 7 NORTH TO 290 RD.
 (ROAD JOGS WEST TWO TIMES) - 1 WEST ON 290 RD TO WILLOW RD.
 2 NORTH - WEST & NORTH INTO

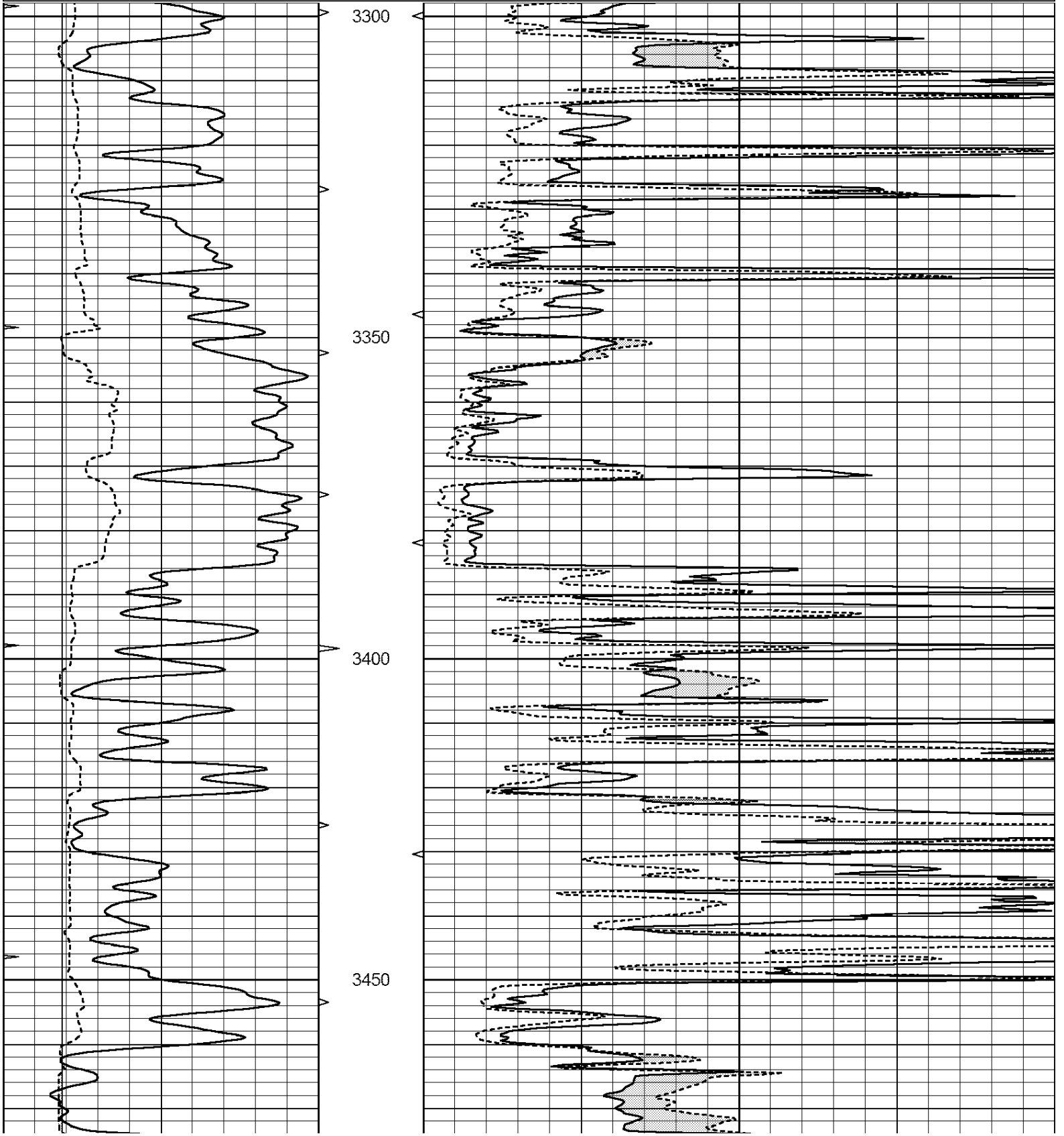


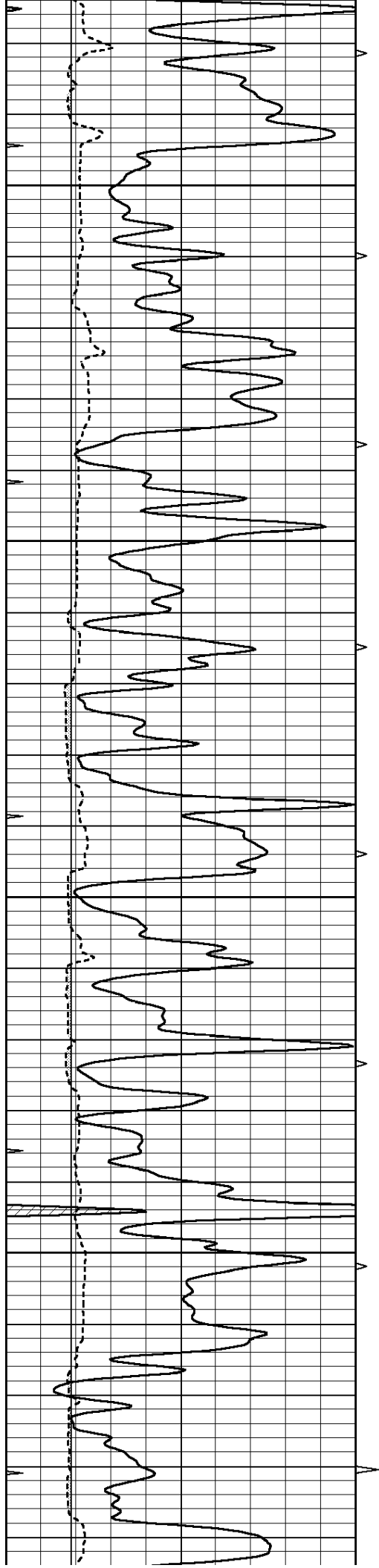
Casedhole Solutions

MAIN SECTION

Database File: 30891ddn.db
 Dataset Pathname: pass6.1
 Presentation Format: _micro
 Dataset Creation: Sun Jan 17 20:56:45 2016 by Calc Open-Cased 090629
 Charted by: Depth in Feet scaled 1:240

0	GAMMA RAY (GAPI)	150	ABHV	0	MEL1.5 (Ohm-m)	40
6	CALIPER (in)	16	10 (ft3)	0	MEL2.0 (Ohm-m)	40
0	MINMK	20	TBHV			
			0 (ft3)	10		



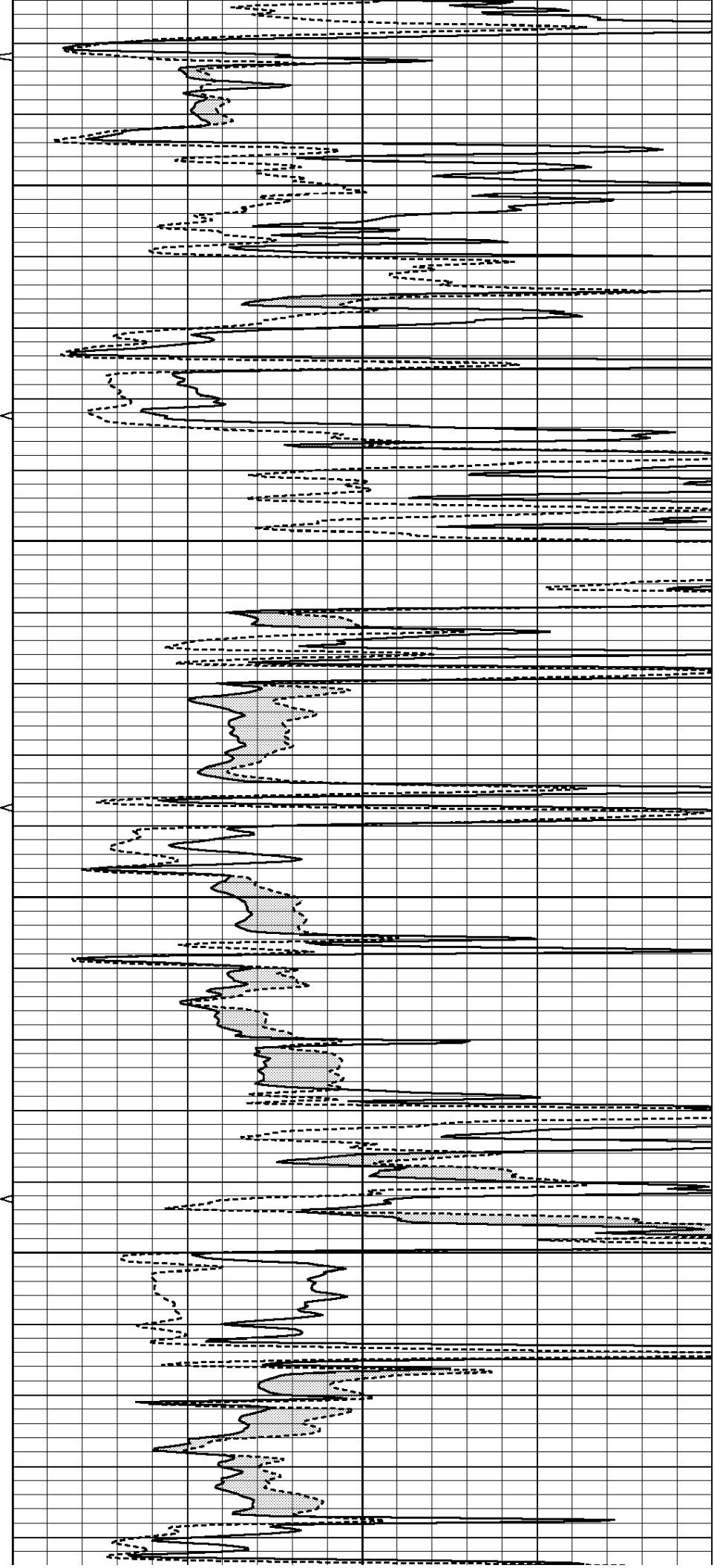


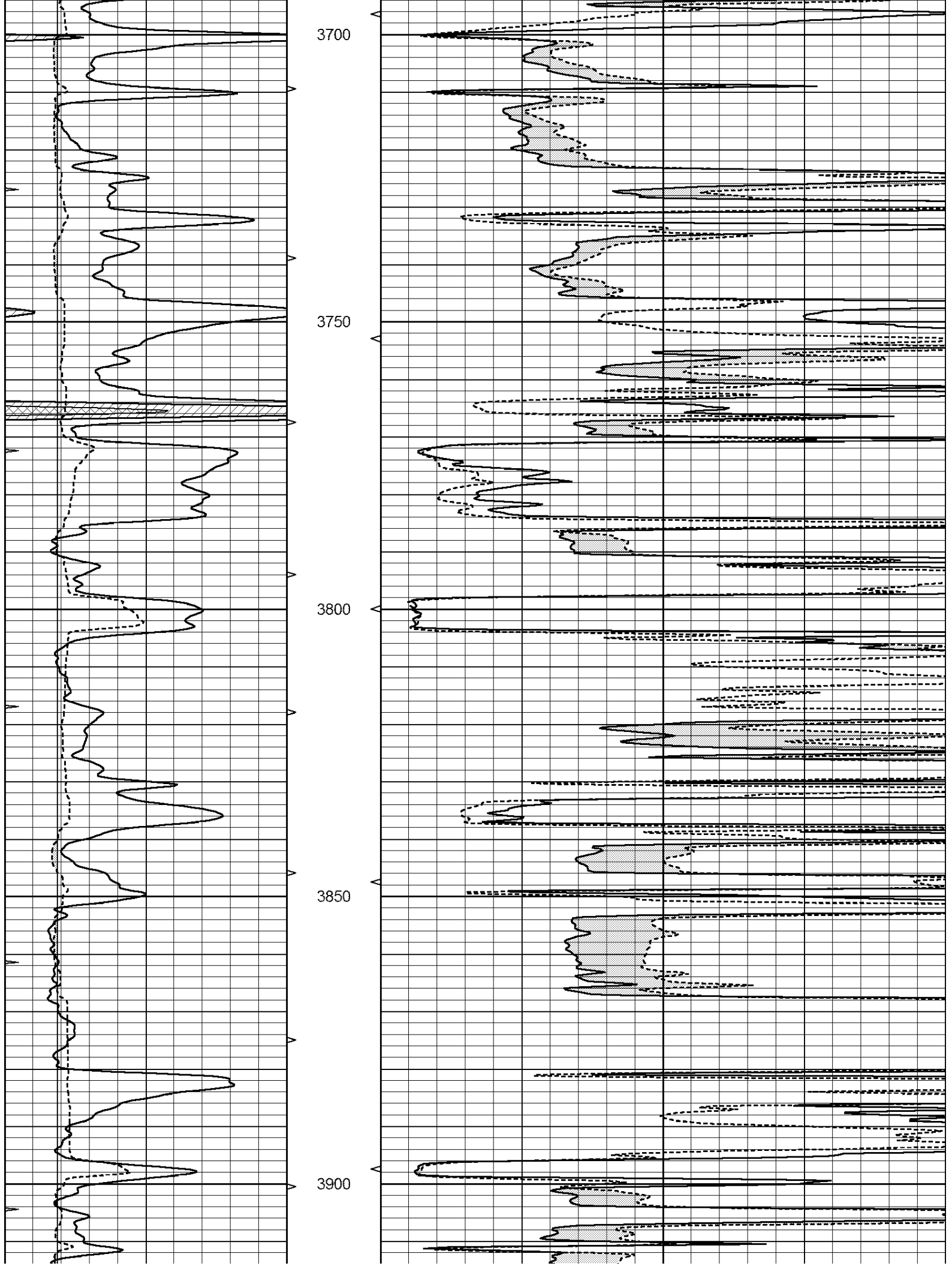
3500

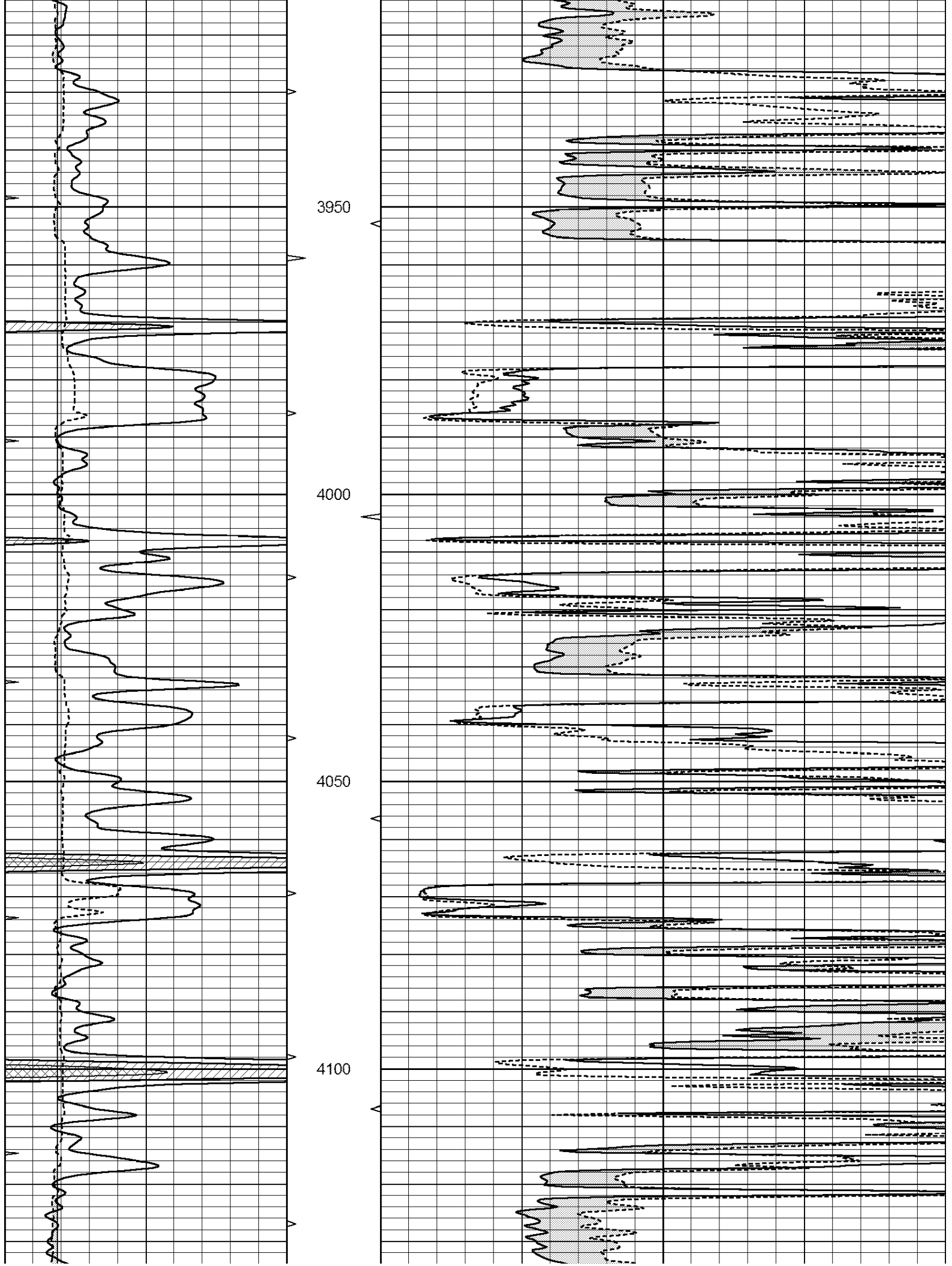
3550

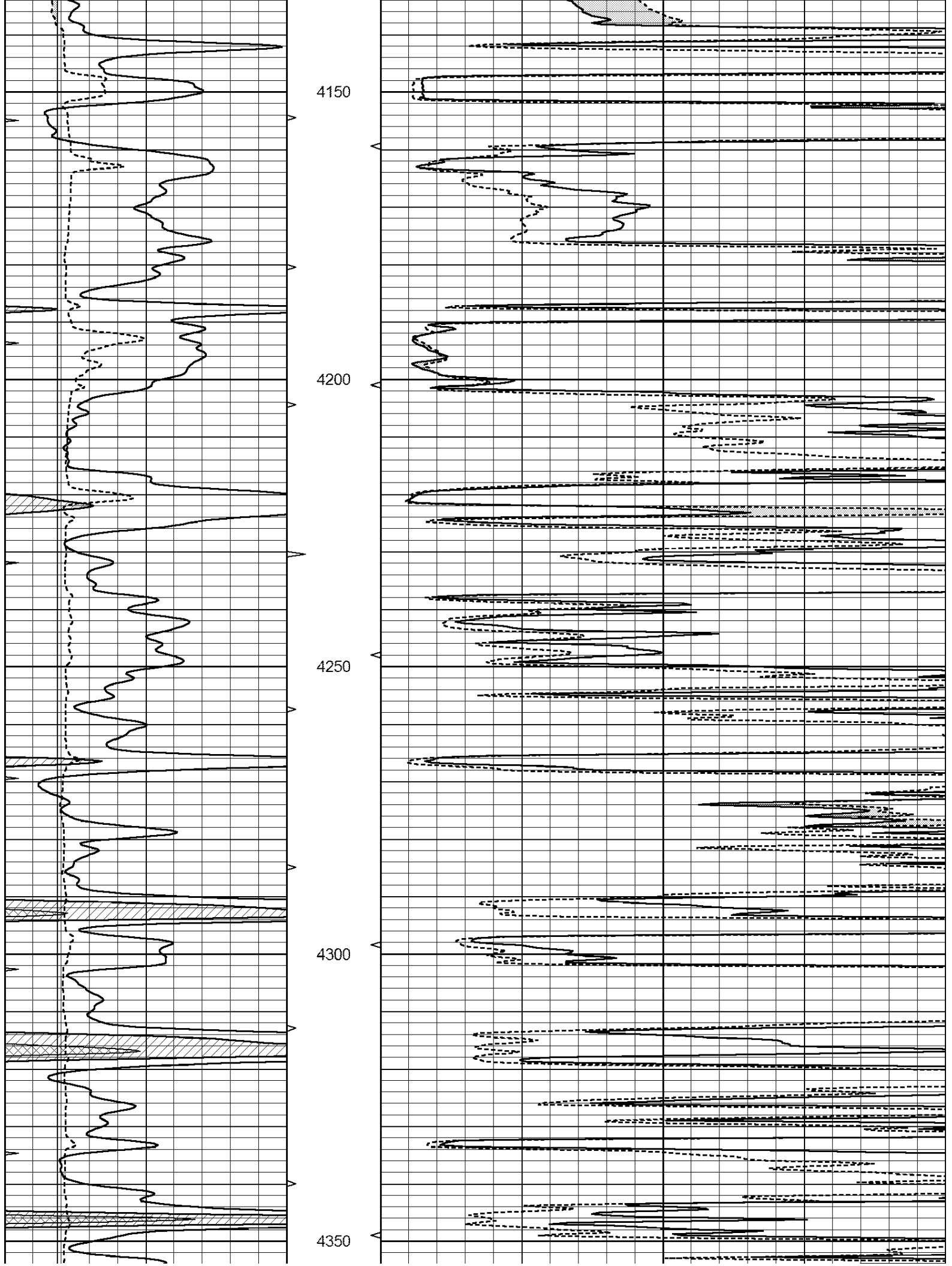
3600

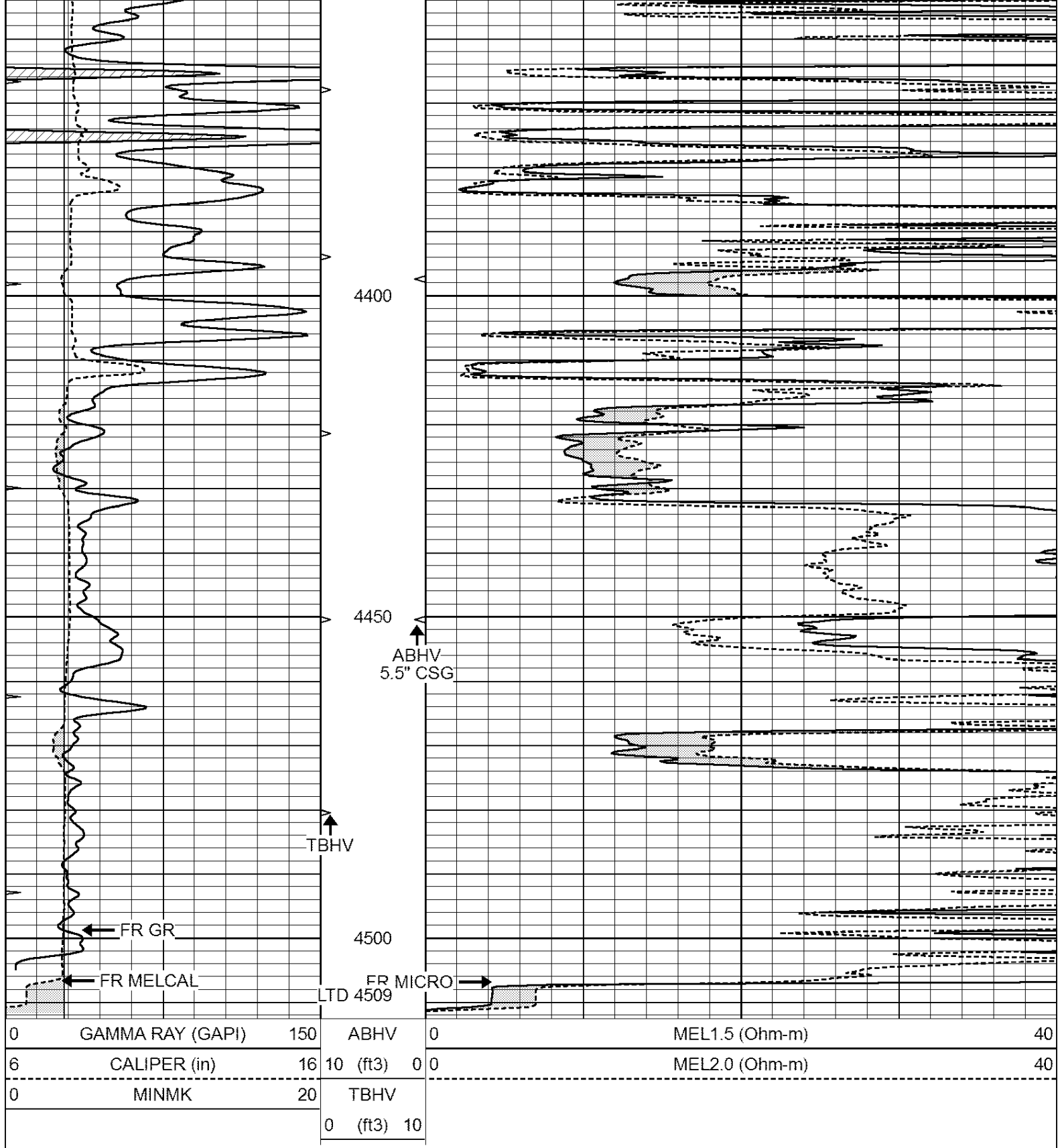
3650









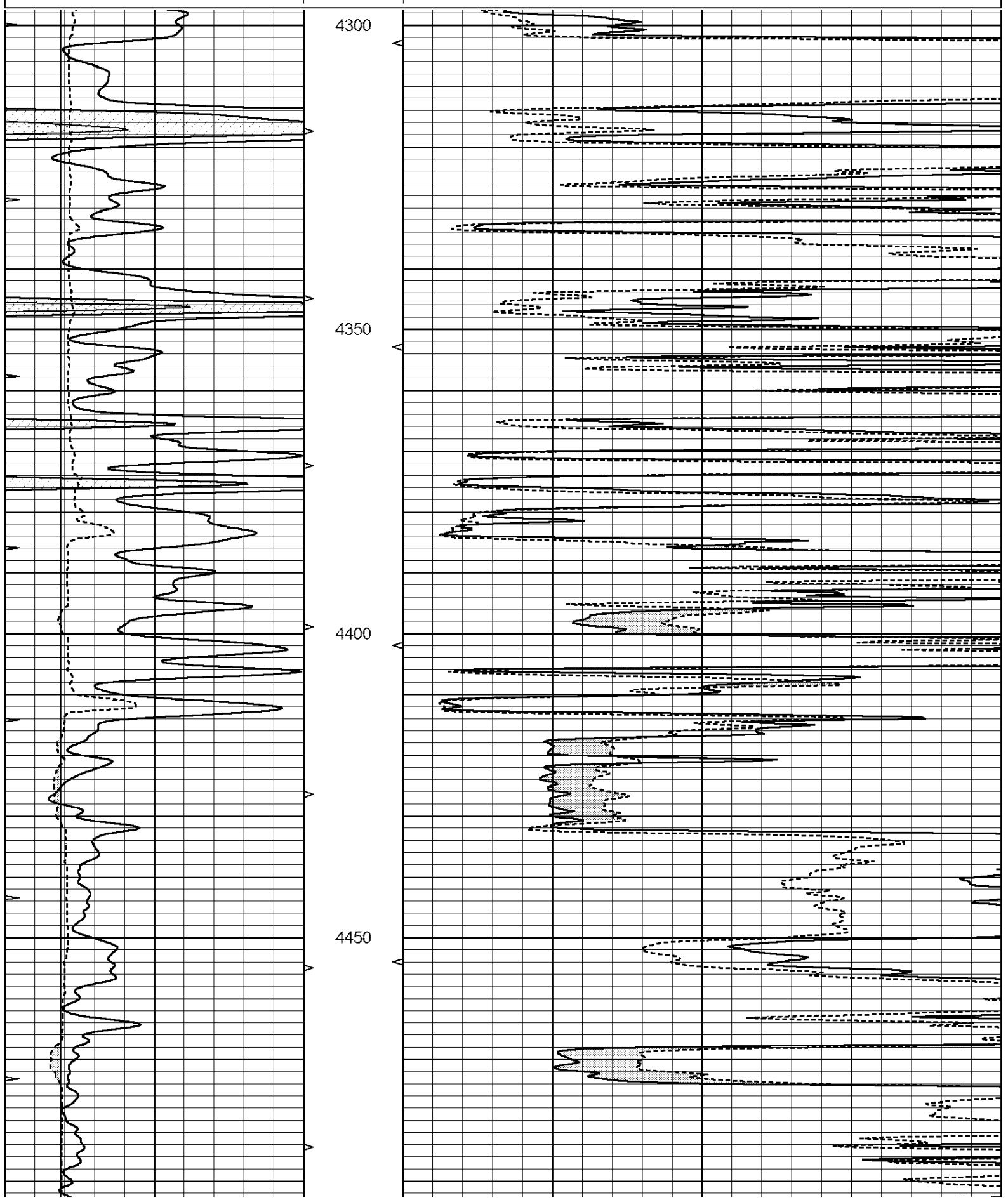


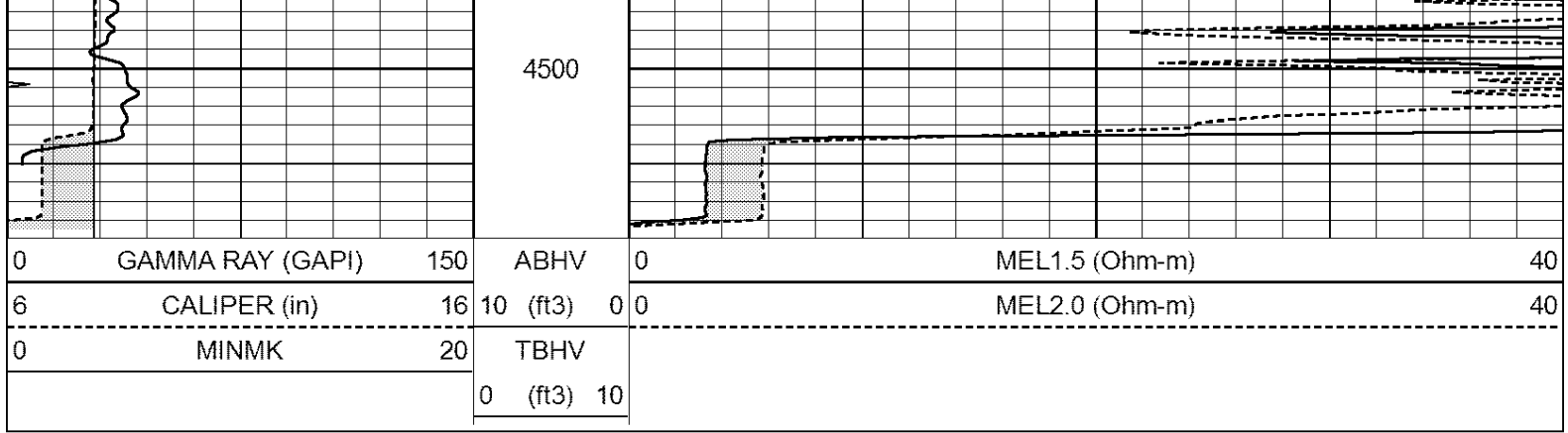
**Casedhole
Solutions**

REPEAT SECTION

Database File: 30891ddn.db
 Dataset Pathname: pass5.1
 Presentation Format: _micro
 Dataset Creation: Sun Jan 17 20:43:49 2016 by Calc Open-Cased 090629
 Created by: Depth in Feet scaled 1:0.40

0	GAMMA RAY (GAPI)	150	ABHV	0	MEL1.5 (Ohm-m)	40
6	CALIPER (in)	16	10 (ft3)	0 0	MEL2.0 (Ohm-m)	40
0	MINMK	20	TBHV			
			0 (ft3)	10		





Calibration Report

Database File: 30891ddn.db
 Dataset Pathname: pass5.1
 Dataset Creation: Sun Jan 17 20:43:49 2016 by Calc Open-Cased 090629

MICRO Calibration Report

Serial Number: MICRO6
 Tool Model: PROBE
 Performed: Wed Aug 26 00:34:46 2015

Caliper Calibration: Gain=3.960 Offset=4.601

	Low Cal	High Cal
References	7.000	14.000
Readings	0.555	2.323

1.5" Calibration: Gain=38.075 Offset=-0.400

	Low Cal	High Cal
References	0.000	20.000
Readings	0.004	1.196

2" Calibration: Gain=48.000 Offset=-1.000

	Low Cal	High Cal
References	0.000	20.000
Readings	0.006	0.913

Gamma Ray Calibration Report

Serial Number: GR6
 Tool Model: OPEN
 Performed: Thu Nov 12 05:47:01 2015

Calibrator Value: 150.0 GAPI

Background Reading:	0.0	cps
Calibrator Reading:	276.0	cps

Sensitivity: 0.4500 GAPI/cps