



Pioneer Energy Services

Gamma Ray / Neutron Log

15-081-20790-00-01

Company Berexco, Inc.  
 Well Dennis Unit #2 WSW  
 Field U.S. 83 Northwest  
 County Haskell State Kansas

Location SE SE NW  
 2310' FNL & 2310' FWL  
 Sec: 3 Twp: 29S Rge: 33W

Other Services  
 GRCBL  
 Perf

Permanent Datum Ground Level Elevation  
 Log Measured From Kelly Bushing 12 Ft. Above Perm. Datum  
 Drilling Measured From Kelly Bushing

Elevation  
 K.B. 2971  
 D.F.  
 G.L. 2959

Date	4/9/2014	
Run Number	One	
Type Log	GRN	
Depth Driller	1790	
Depth Logger	1722	
Bottom Logged Interval	1721	
Top Logged Interval	0	
Type Fluid In Hole	Water	
Salinity, PPM CL	////	
Density Level	////	
Level	0	
Max. Rec. Temp. F	94	
Operating Rig Time	1 Hr	
Equipment -- Location	13 Pratt	
Recorded By	S. Chesney	
Witnessed By	Greg Klaus	

Borehole Record		Casing Record		
Run No	Bit From	To	Size Wgt.	From To
			8.625	0 TD

<<< Fold Here >>>

All interpretations are opinions based on inferences from electrical or other measurements and we cannot and do not guarantee the accuracy or correctness of any interpretation, and we shall not, except in the case of gross or willful negligence on our part, be liable or responsible for any loss, costs, damages, or expenses incurred or sustained by anyone resulting from any interpretation made by any of our officers, agents or employees. These interpretations are also subject to our general terms and conditions set out in our current Price Schedule.

Comments

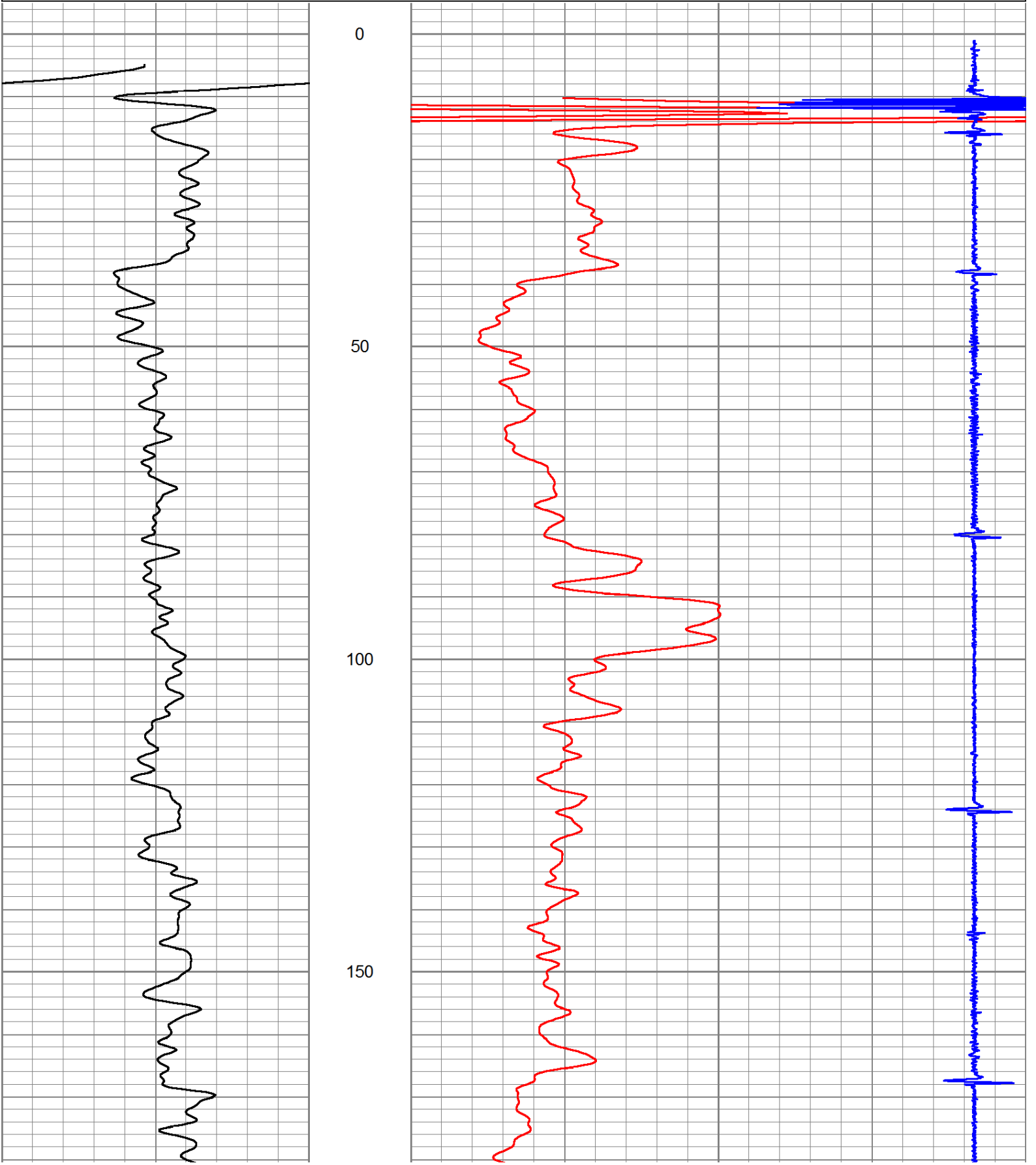
Thank you for using Pioneer Energy Services  
 (620) 672-8300

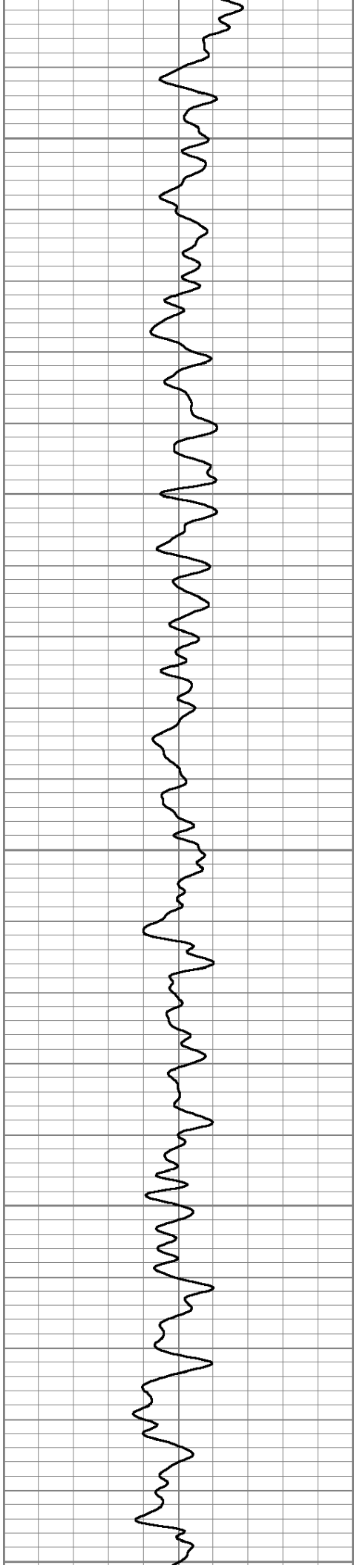


Main Pass

Database File: berexco-swd.db  
Dataset Pathname: grncbl/pass5  
Presentation Format: gr-n-ccl  
Dataset Creation: Wed Apr 09 09:19:01 2014 by Calc SCH 120126  
Charted by: Depth in Feet scaled 1:240

0	GR (GAPI)	150	340	NEU (NAPI)	3200	
				3	CCL	-0.6





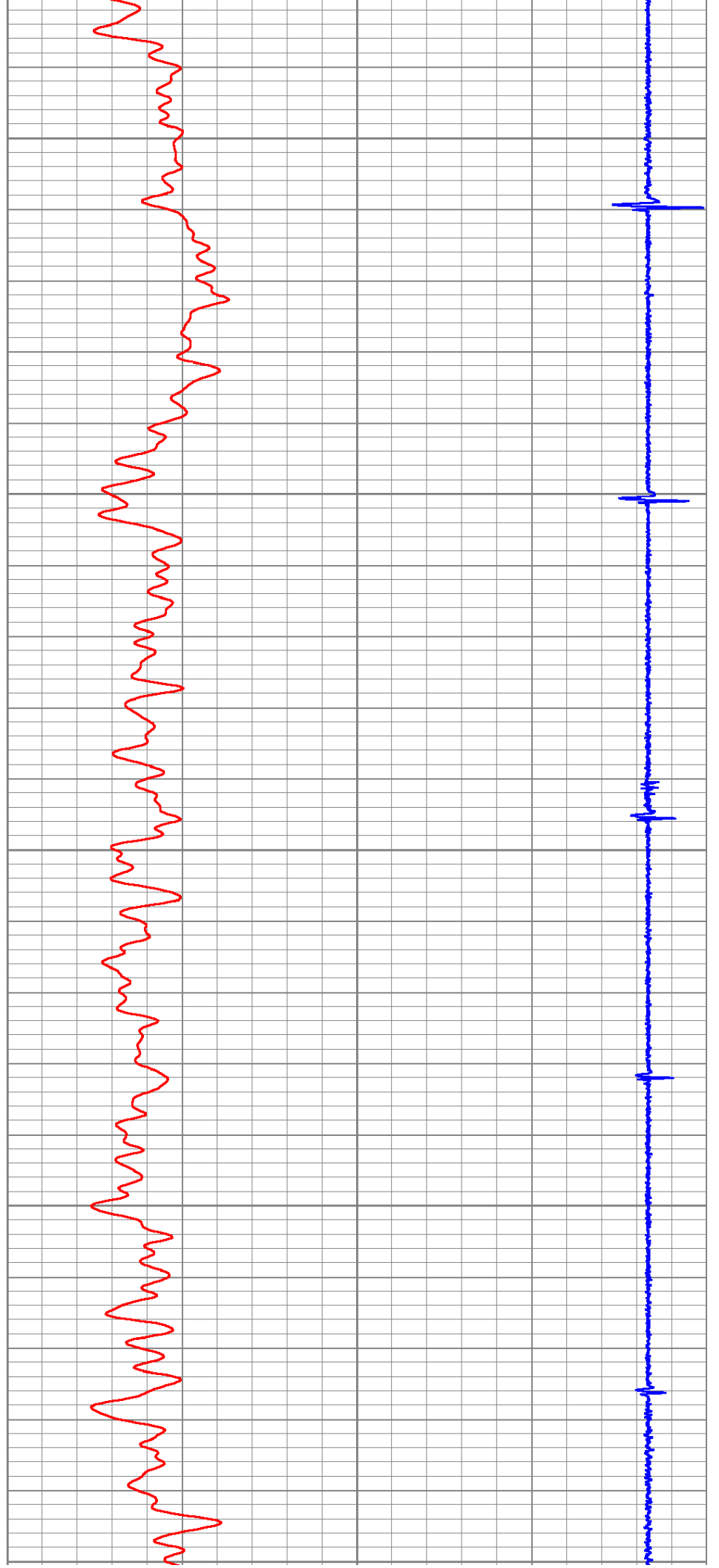
200

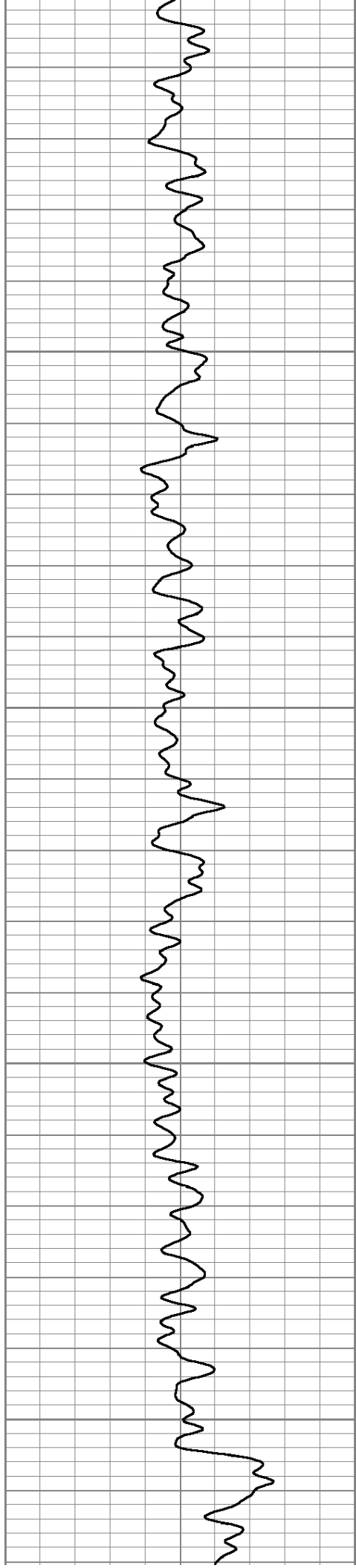
250

300

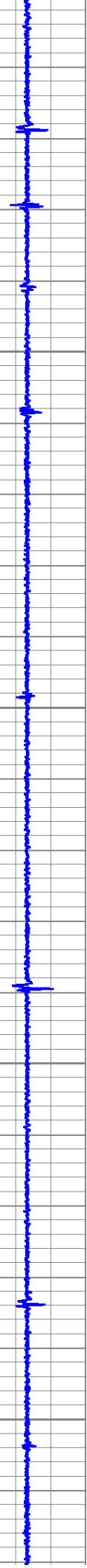
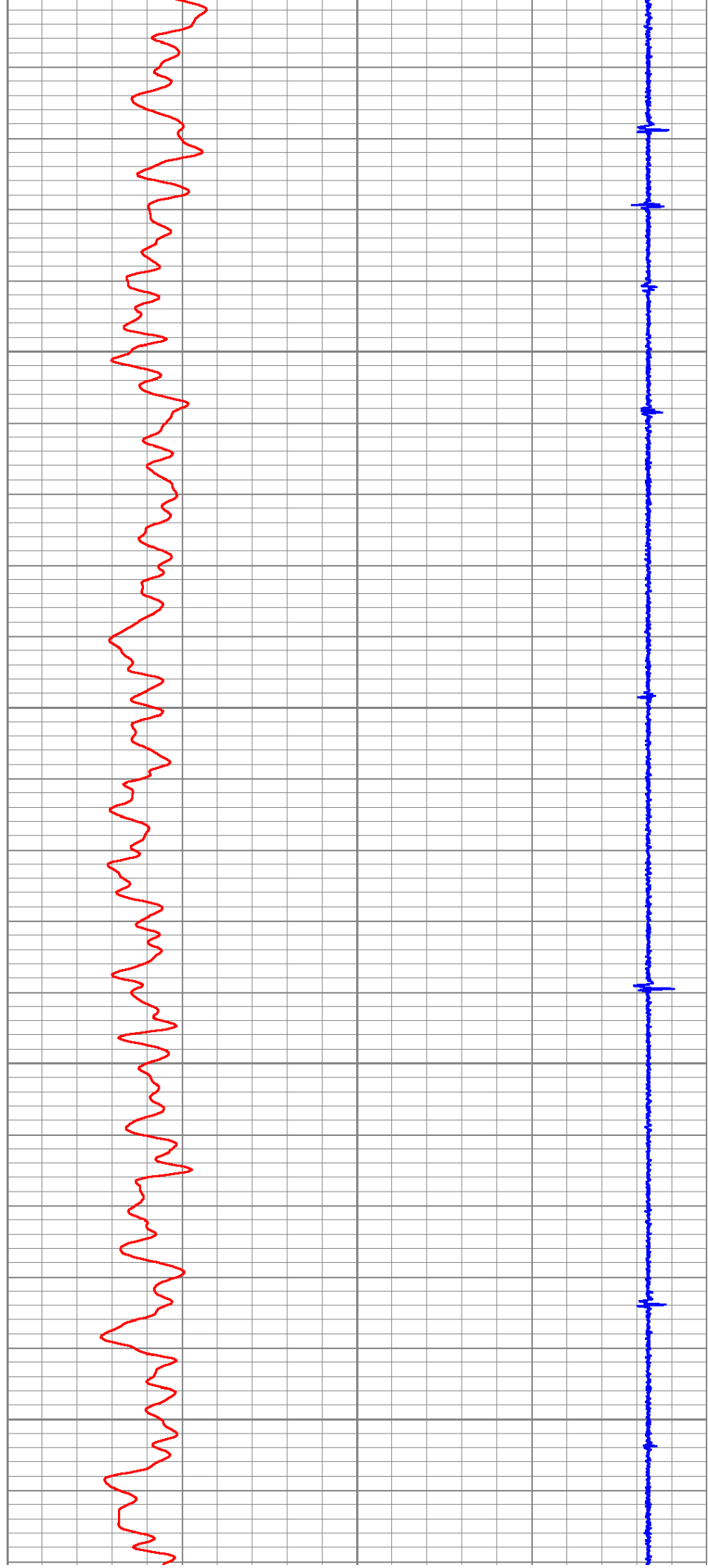
350

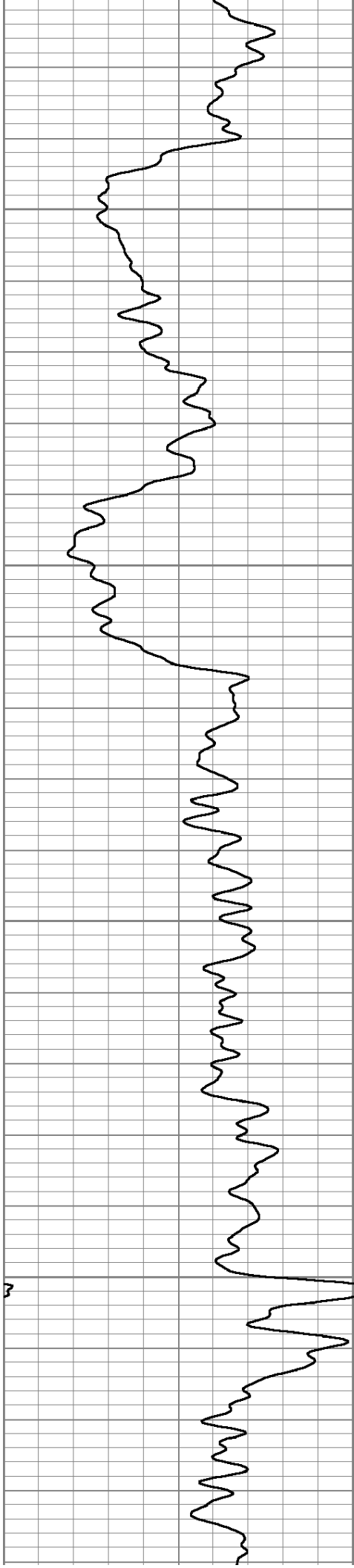
400





450  
500  
550  
600



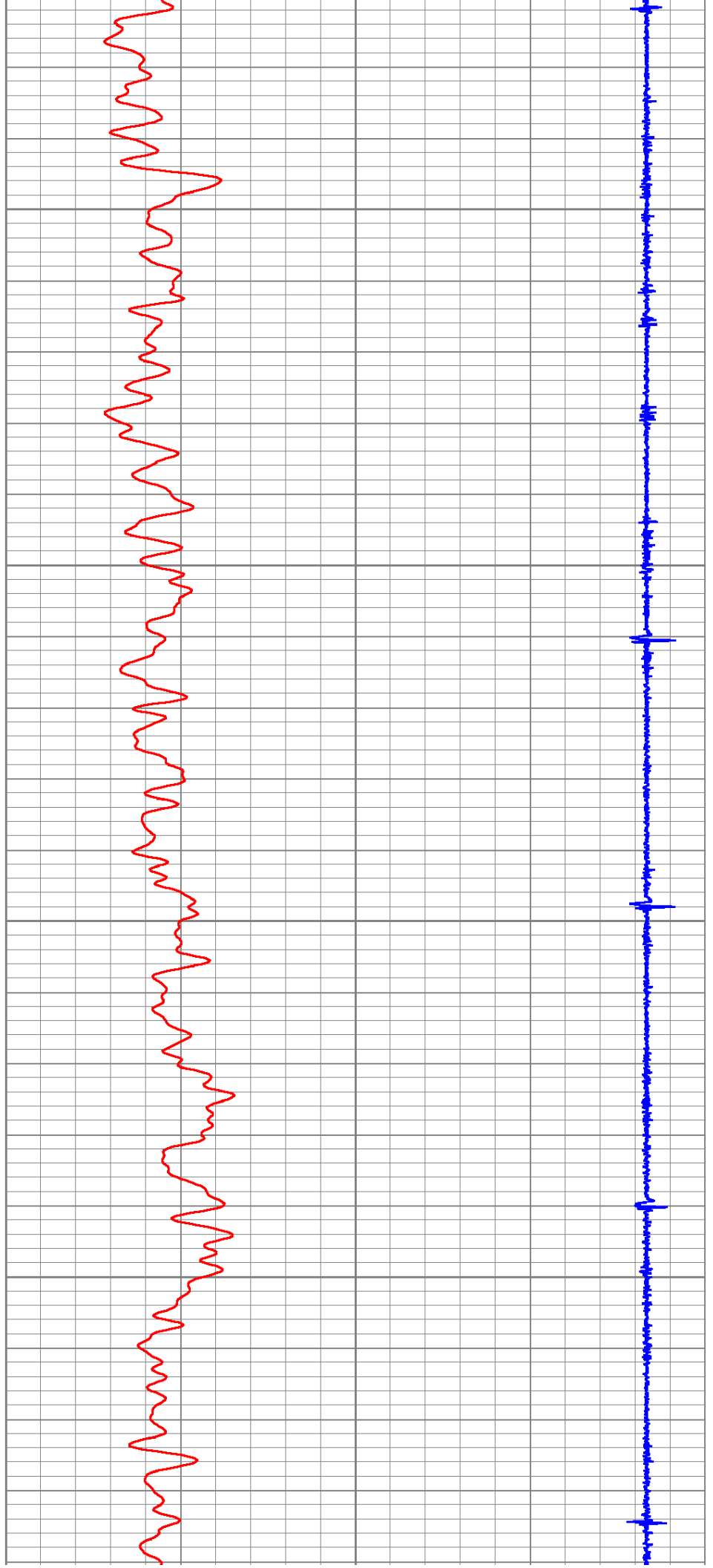


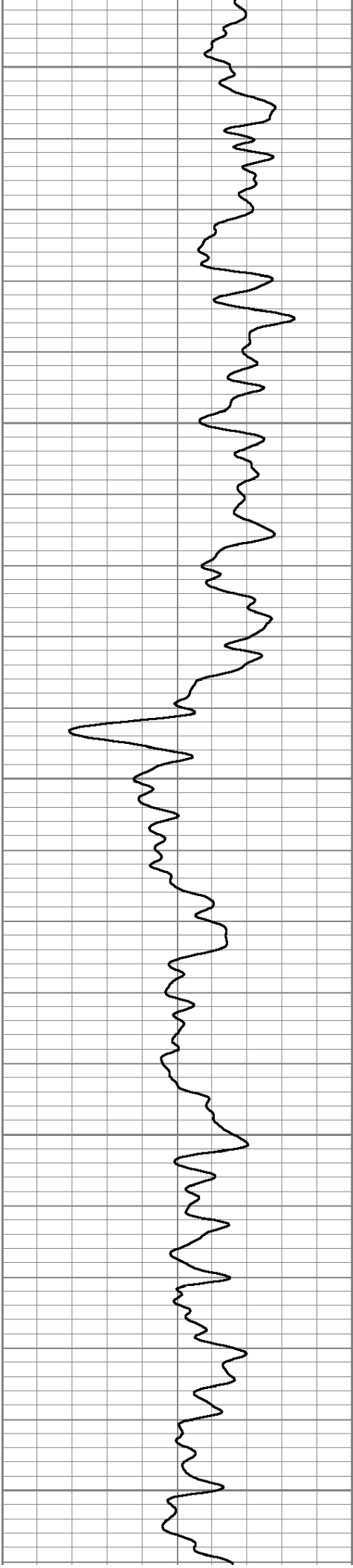
650

700

750

800





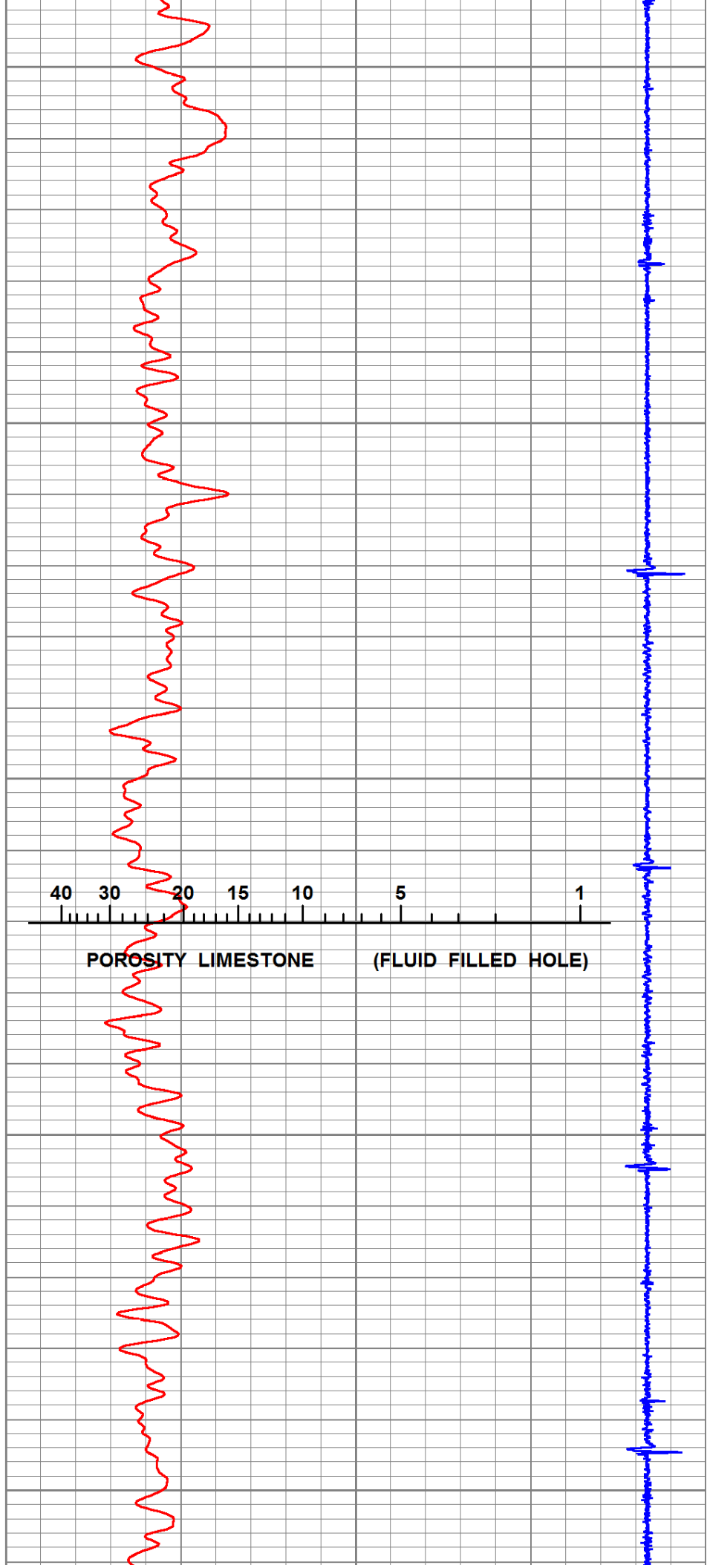
850

900

950

1000

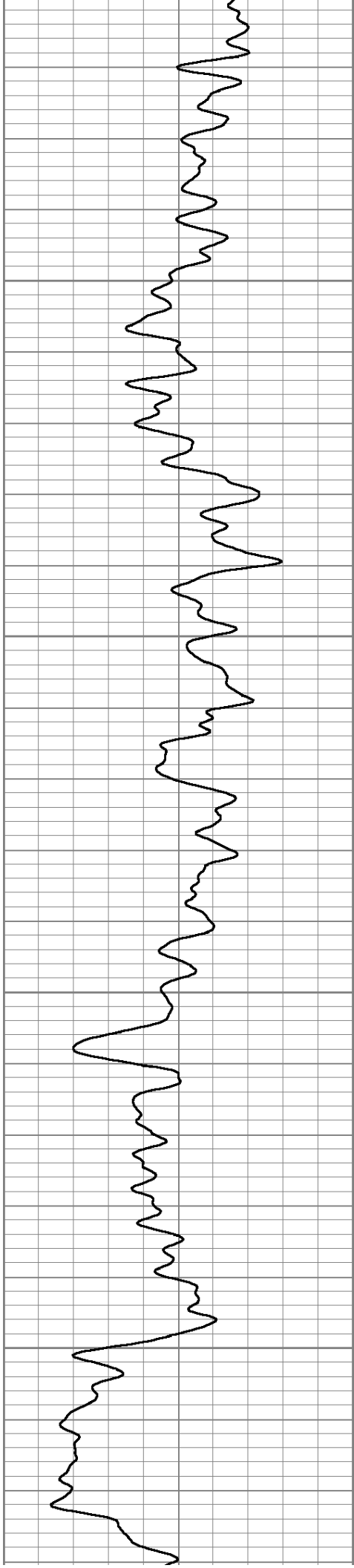
1050



40 30 20 15 10 5 1

POROSITY LIMESTONE

(FLUID FILLED HOLE)

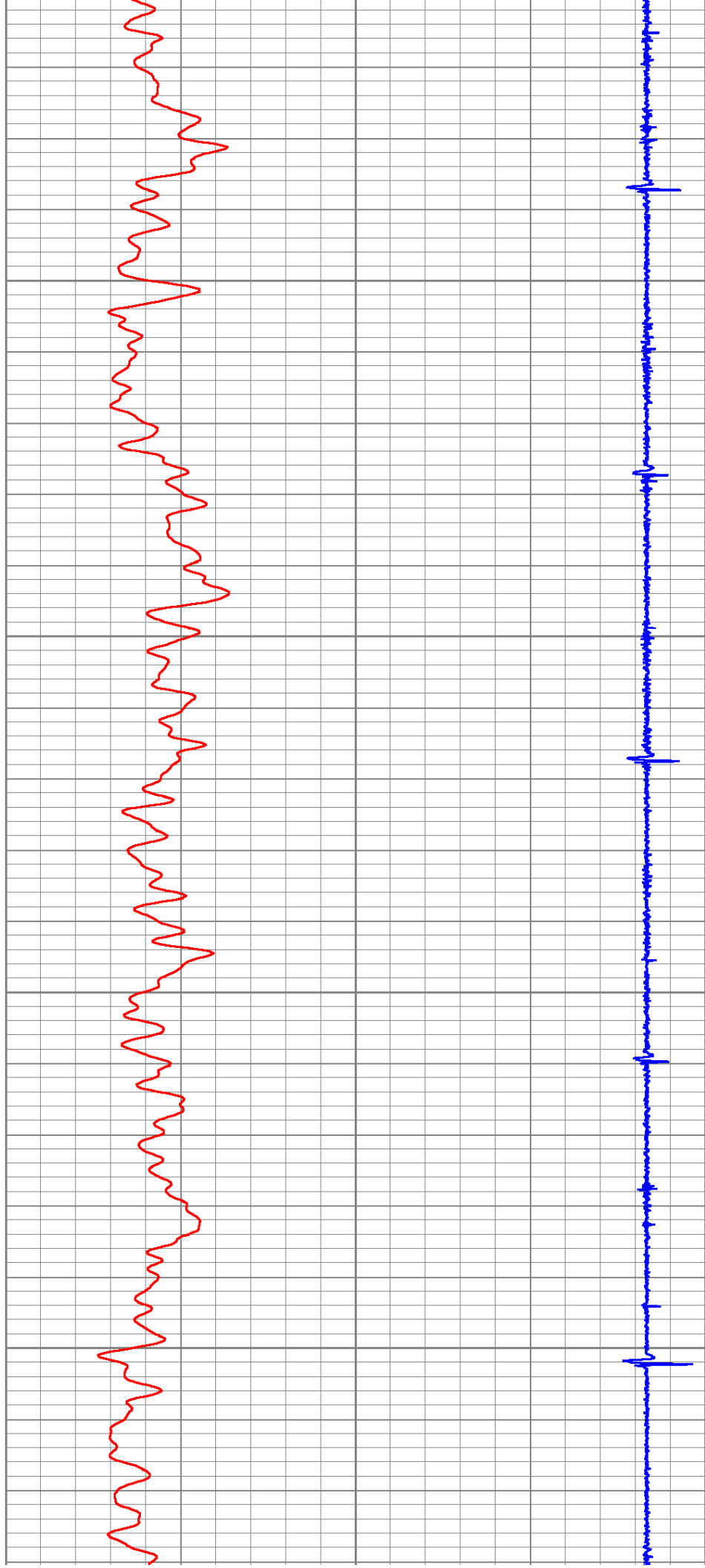


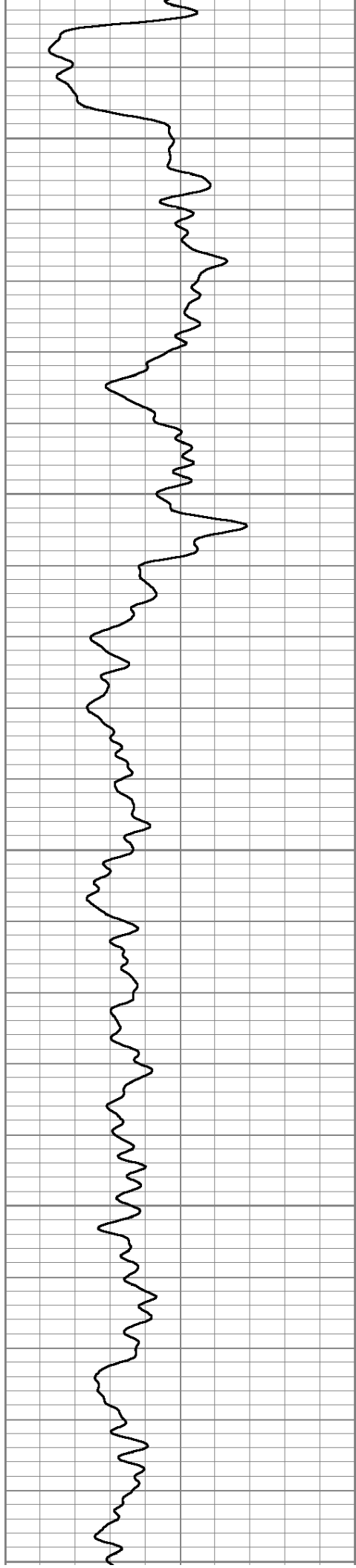
1100

1150

1200

1250





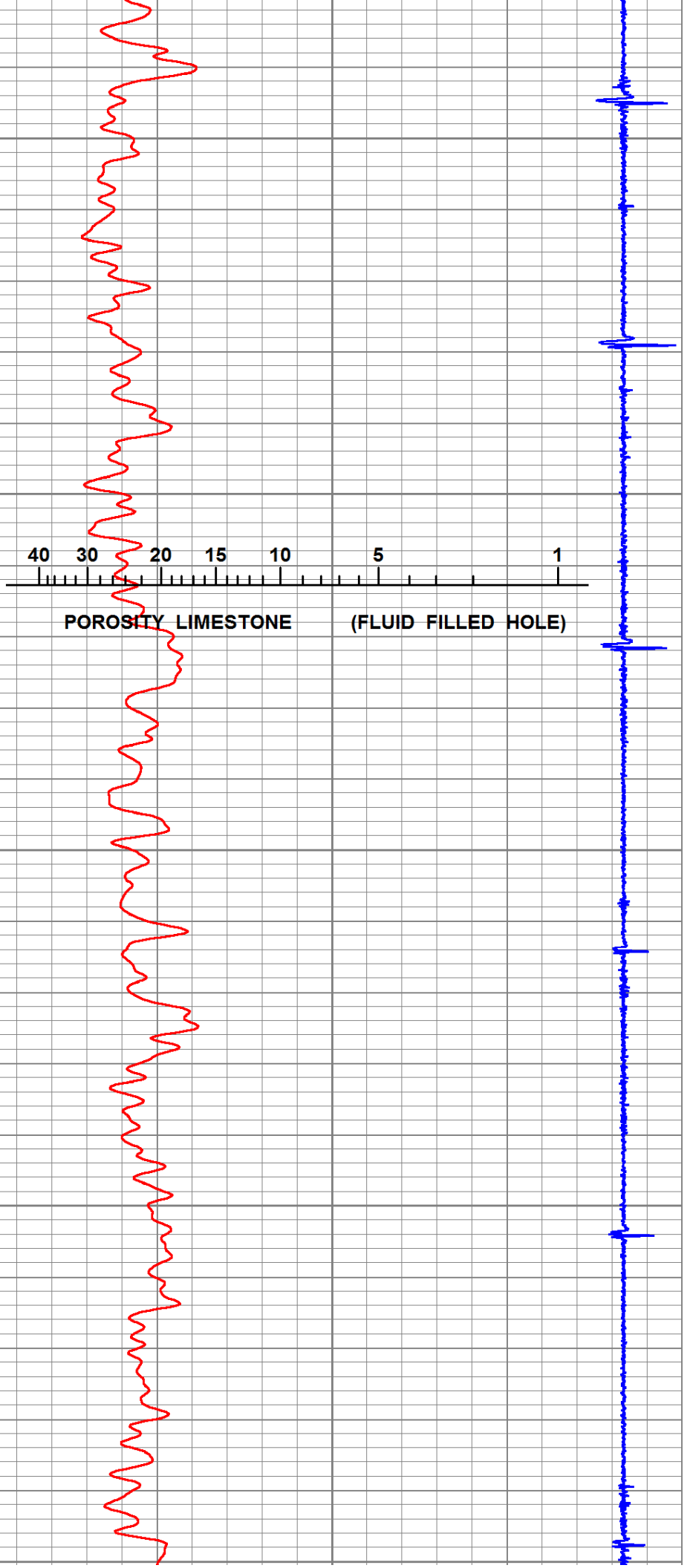
1300

1350

1400

1450

1500



40

30

20

15

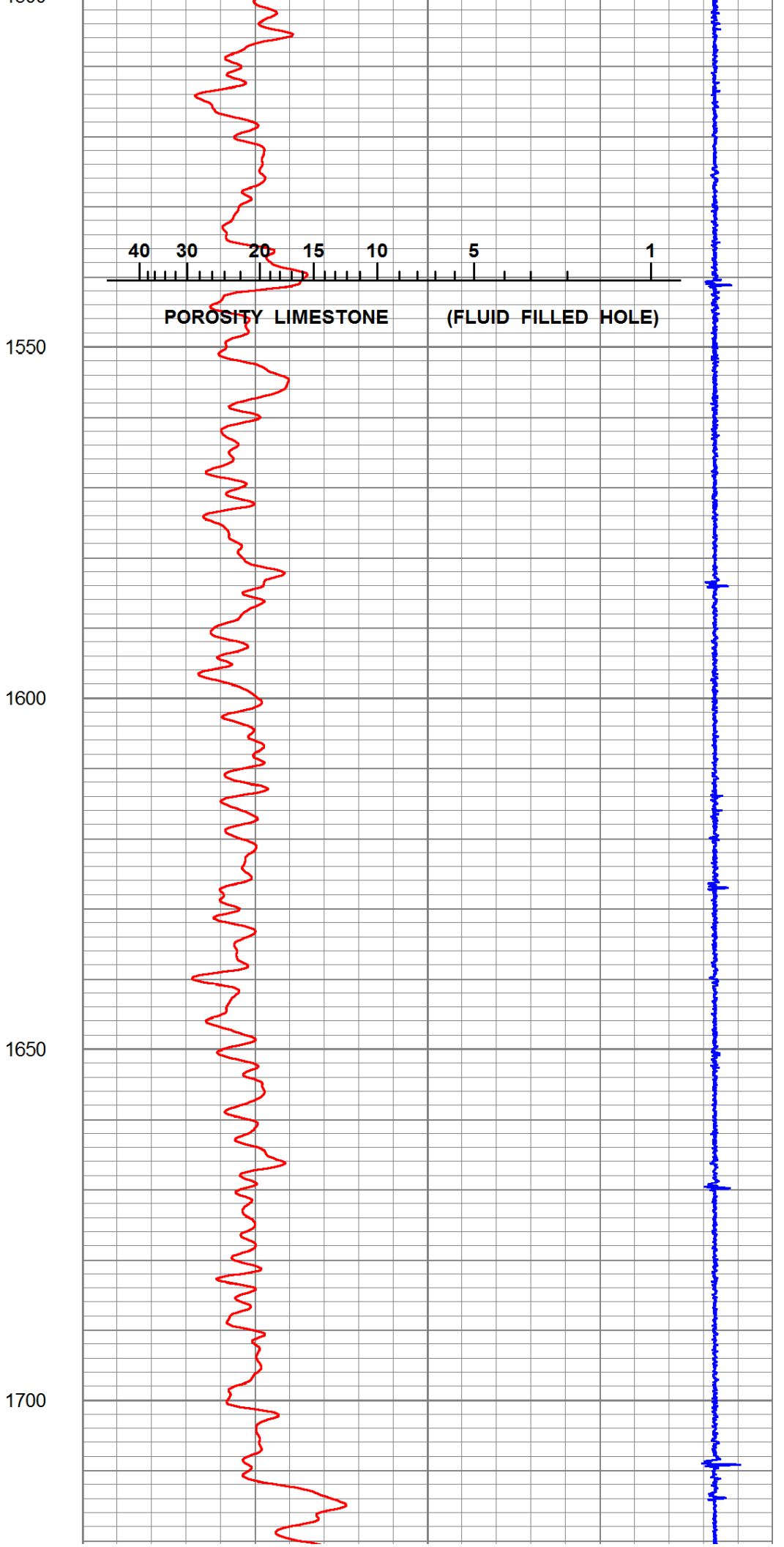
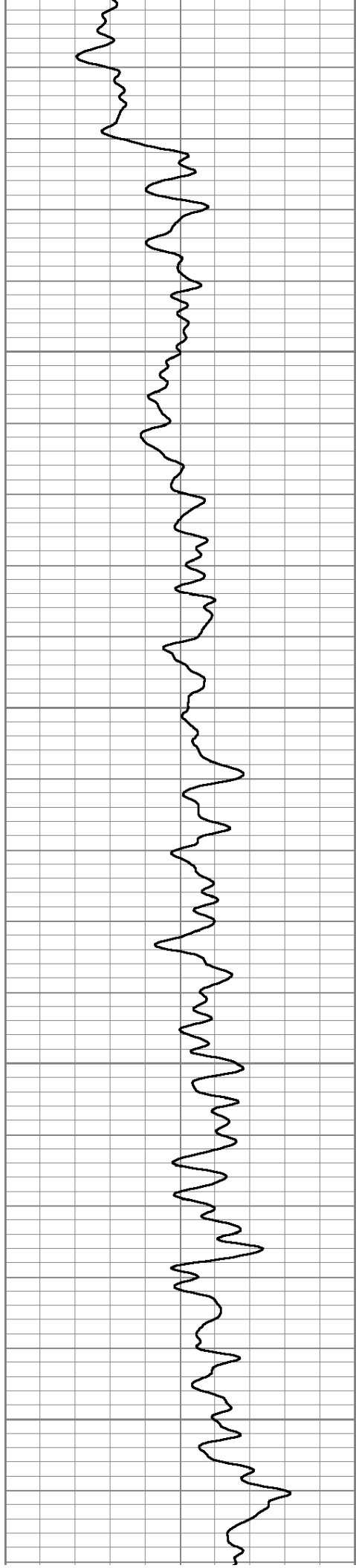
10

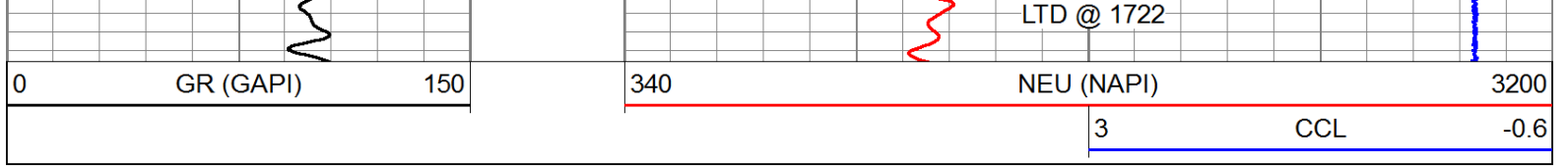
5

1

POROSITY LIMESTONE

(FLUID FILLED HOLE)

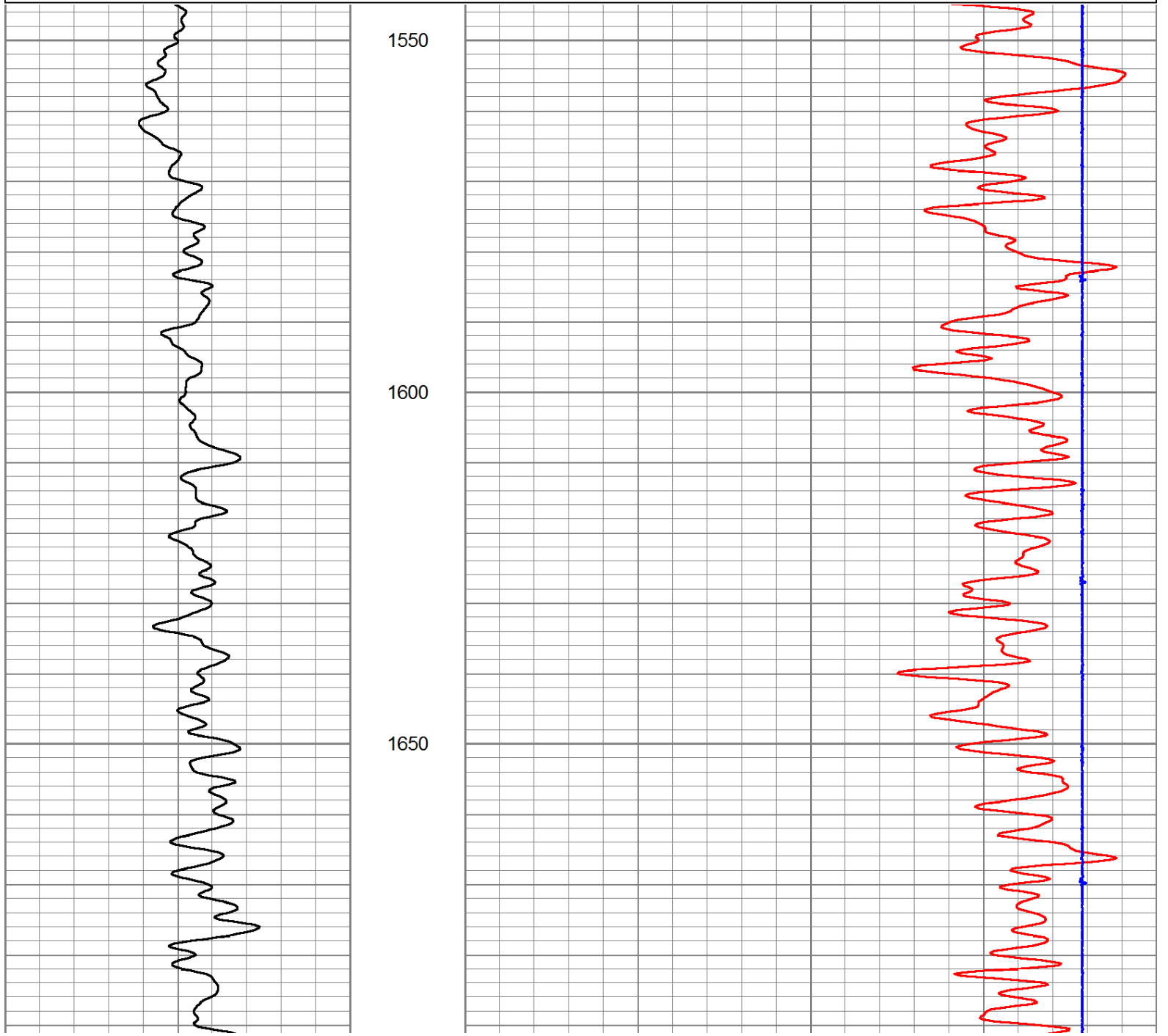
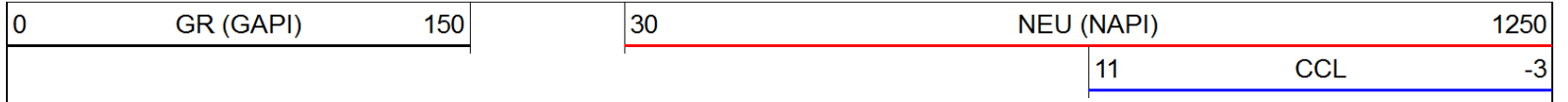


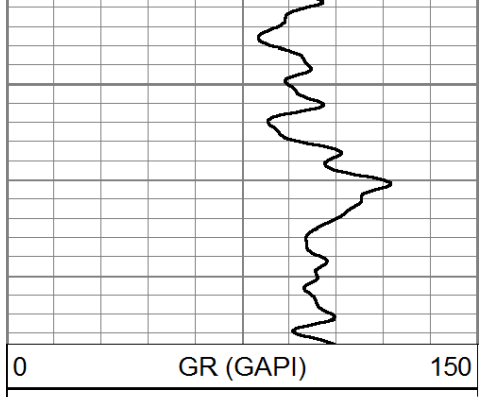


Pioneer Energy Services

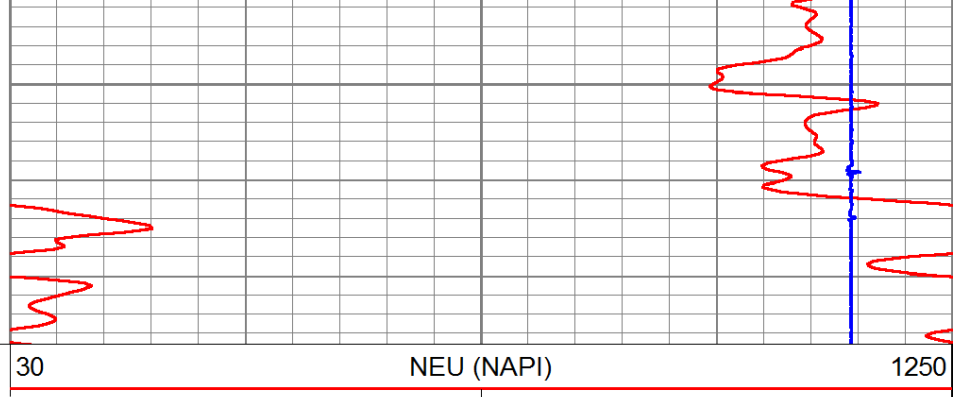
# Repeat Section

Database File: berexco-swd.db  
 Dataset Pathname: grncbl/pass4  
 Presentation Format: gr-n-ccl  
 Dataset Creation: Wed Apr 09 08:18:21 2014 by Log SCH 120126  
 Charted by: Depth in Feet scaled 1:240





1700



0 GR (GAPI) 150

30 NEU (NAPI) 1250

11 CCL -3