



MIDWEST WIRELINE

BOREHOLE COMPENSATED SONIC LOG

Company Palmer Oil, Inc.
Well Holloway #6-2
Field Wildcat
County Haskell **State** Kansas

Company Palmer Oil, Inc.
 Well Holloway #6-2
 Field Wildcat
 County Haskell
 State Kansas

Location: 2581 FNL & 1452 FWL SEC 6 TWP 28S RGE 33W	API #: 15-081-22238-00-00 Other Services: DIL/MEL CNL/CDL
Permanent Datum Log Measured From Drilling Measured From	Ground Level Kelly Bushing Kelly Bushing
Elevation 3034	Elevation K.B. 3047 D.F. G.L. 3034

Date 11/28/2021

Run Number	Two
Type Log	BHCS
Depth Driller	5600
Depth Logger	5604
Bottom Logged Interval	5593
Top Logged Interval	1650
Type Fluid In Hole	Chemical
Salinity, PPM CL	1100
Density	9.3
Level	Full
Max. Rec. Temp. F	132
Operating Rig Time	4 Hours
Equipment -- Location	P-108 HAYS
Recorded By	J. Henrickson
Witnessed By	Kevin Timson

Run No.	Bit	Borehole Record			Casing Record		
		From	To	Size	Wgt.	From	To
One	12.25	0	1654	8.625	24	0	1654
Two	7.875	1654	TD				

<<< Fold Here >>>

All interpretations are opinions based on inferences from electrical or other measurements and Midwest Wireline LLC cannot and does not guarantee the accuracy or correctness of any interpretation, and Midwest Wireline LLC will not be liable or responsible for any loss, costs, damages, or expenses incurred or sustained by anyone resulting from any interpretation made by any of our officers, agents or employees.

Comments

N/A DENOTES NOT AVAILABLE OR NON-APPLICABLE.

Garden City Kansas
 20 South to 50 Rd, West to GG, 2 1/2 South,
 East Into

Log Measured From: Kelly Bushing 13 Ft. Above Permanent Datum

THANK YOU FOR USING MIDWEST WIRELINE LLC
 785-625-3858

Your Midwest Wireline Crew

Engineer: J. Henrickson
 Operator:
 Operator:
 Operator:

This Log Record Was Witnessed By

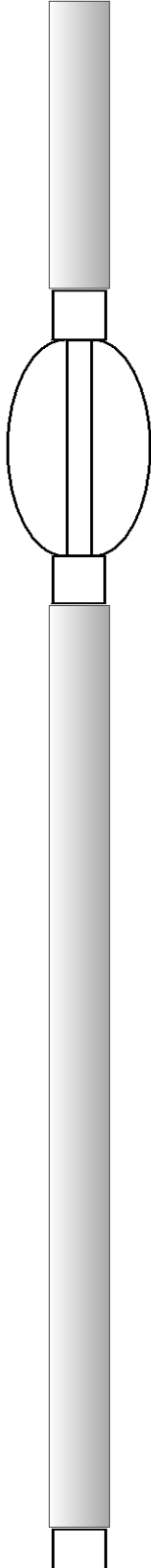
Primary Witness: Kevin Timson
 Secondary Witness:
 Secondary Witness:
 Secondary Witness:

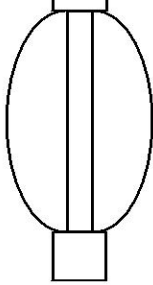
Log Variables

DatabaseC:\ProgramData\Warrior\Data\palmer_holloway_6_2.db
 Dataset field/well/stack/pass4.1/_vars_

Top - Bottom

A	BOREID in	BOTTEMP degF	CASEOD in	CASETHCK in	FLUIDDEN g/cc	M	MATRXDEN g/cc
1	7.875	134	5.5	0	1	2	2.71
NPORSEL	PERFS	SNDERR mmho/m	SNDERRM mmho/m	SPSHIFT mV	SRFTEMP degF	SZCOR	TDEPTH ft
Limestone	0	0	0	505	55	Off	5604

Sensor	Offset (ft)	Schematic	Description	Length (ft)	O.D. (in)	Weight (lb)
MCAL MI MN	28.00 28.00 28.00		ML-Armadillo (Armadillo-1) Pengo micro log tool mandrel with Armadillo Electronics	5.00	3.50	100.00
			CENT-PENGO	5.50	3.00	70.00
WVF4 WVF1	13.50 13.50		SLT-PENGO (0001)	16.00	3.50	300.00
WVF3 WVF2	11.50 11.50					



CENT-PENGO

5.50

3.00

70.00

Dataset: palmer_holloway_6_2.db: field/well/sonmel/pass3
 Total length: 32.00 ft
 Total weight: 540.00 lb
 O.D.: 3.50 in

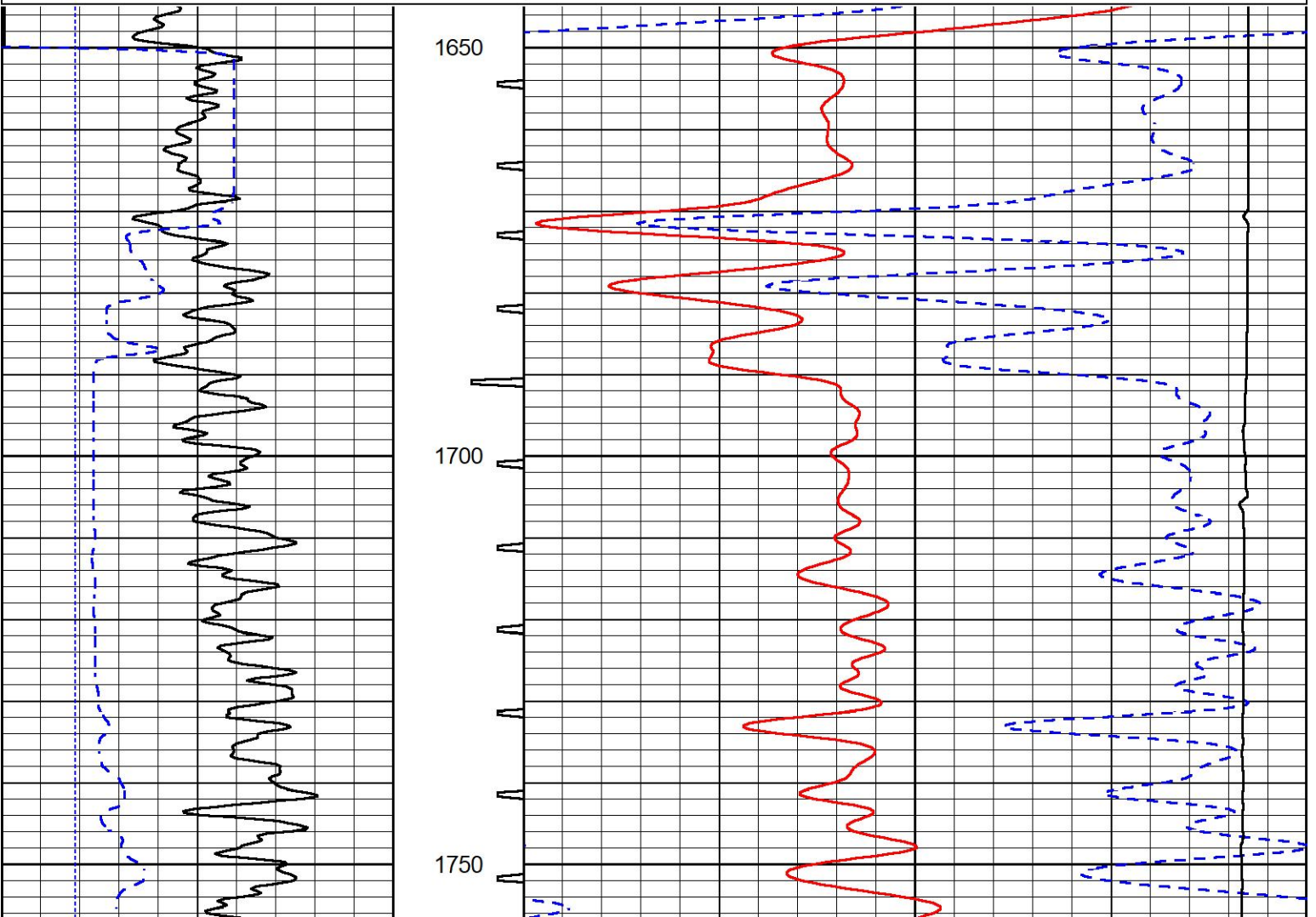


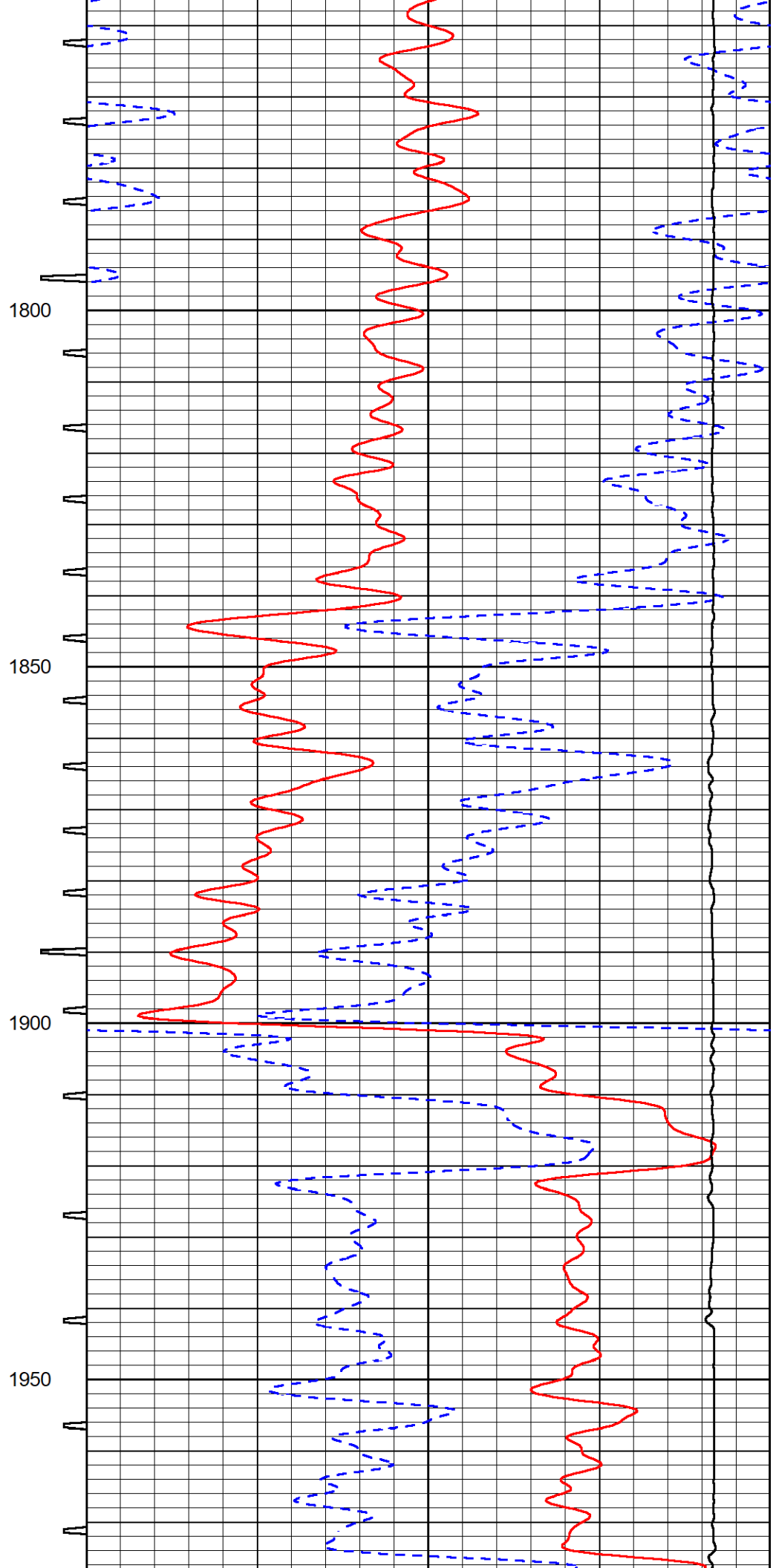
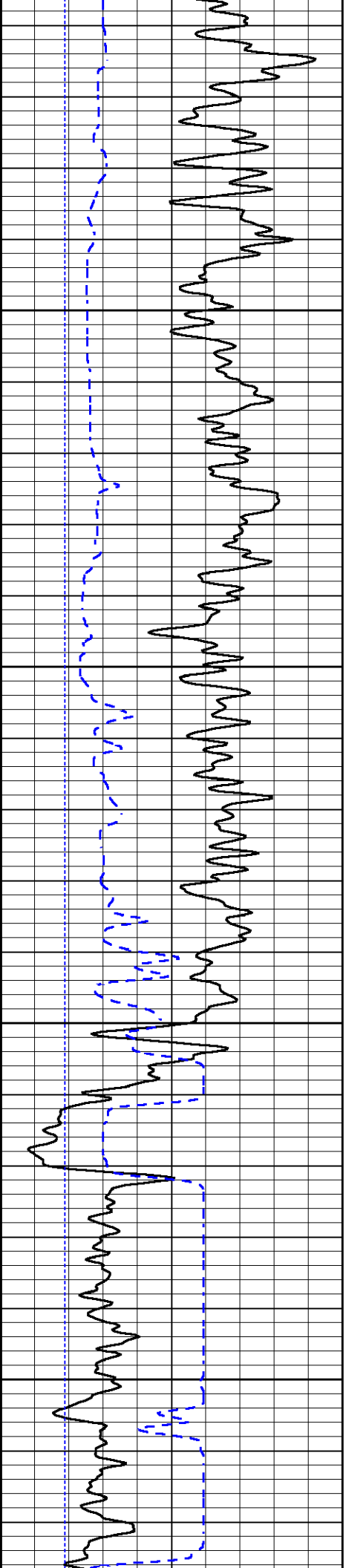
DETAIL SECTION

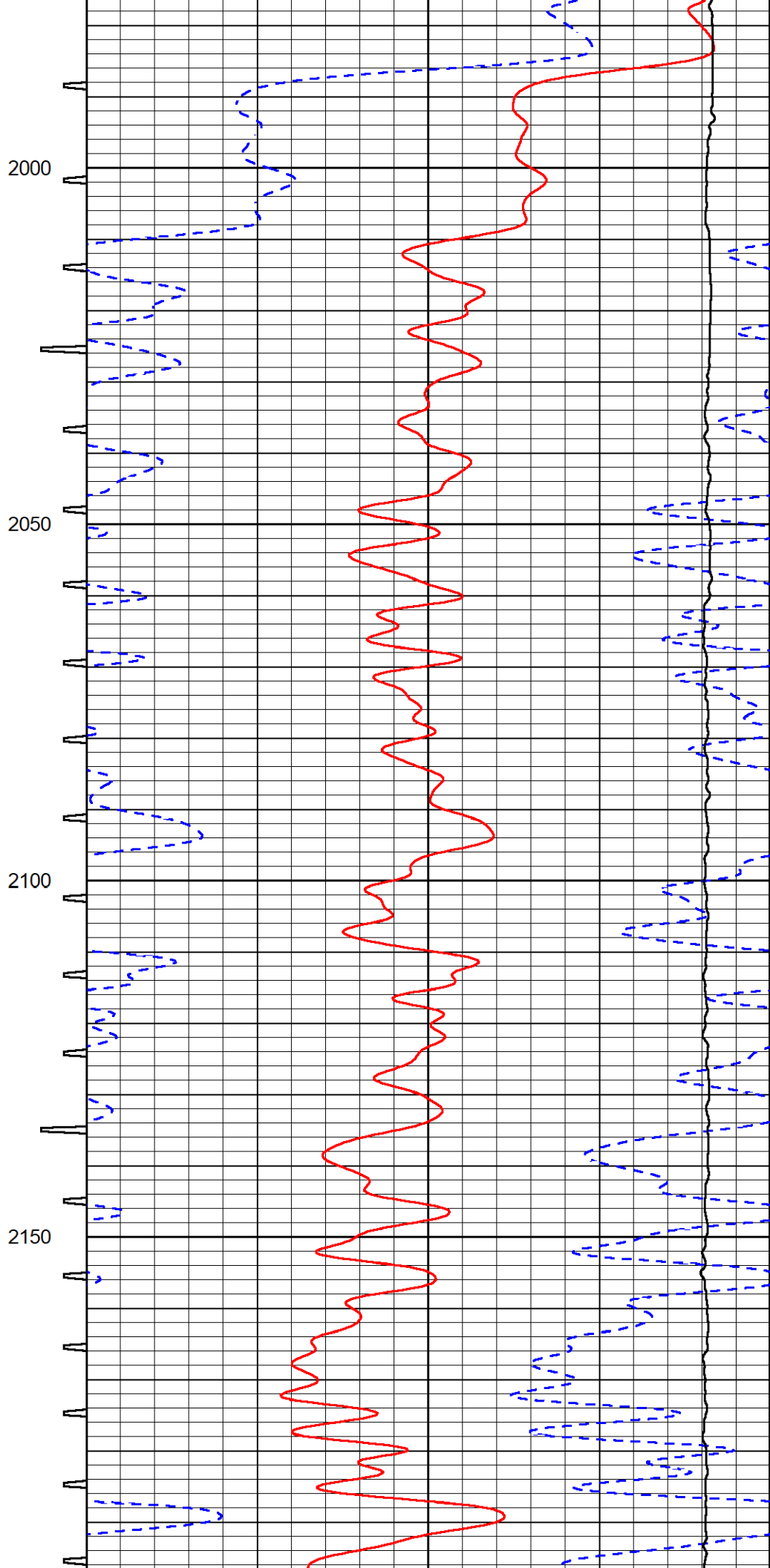
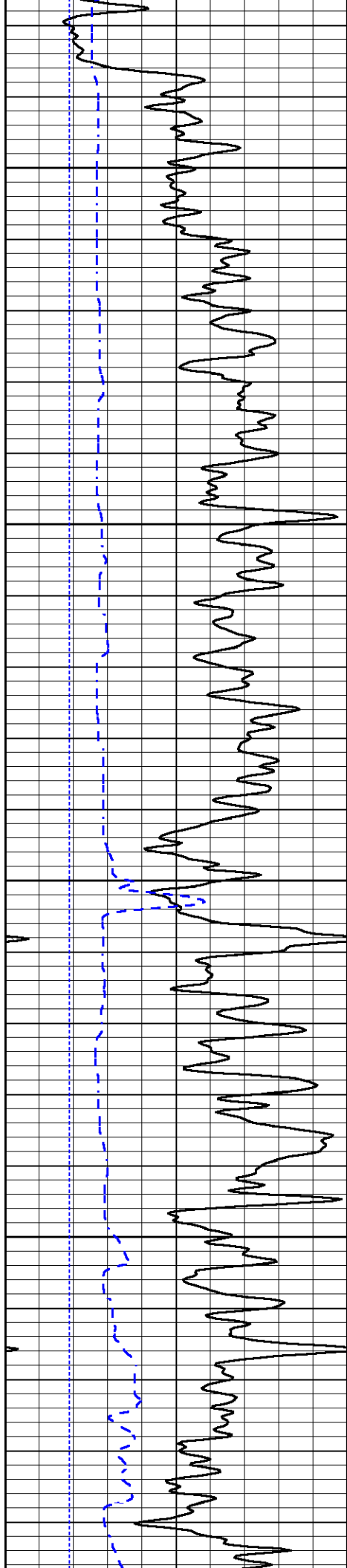
MAIN PASS

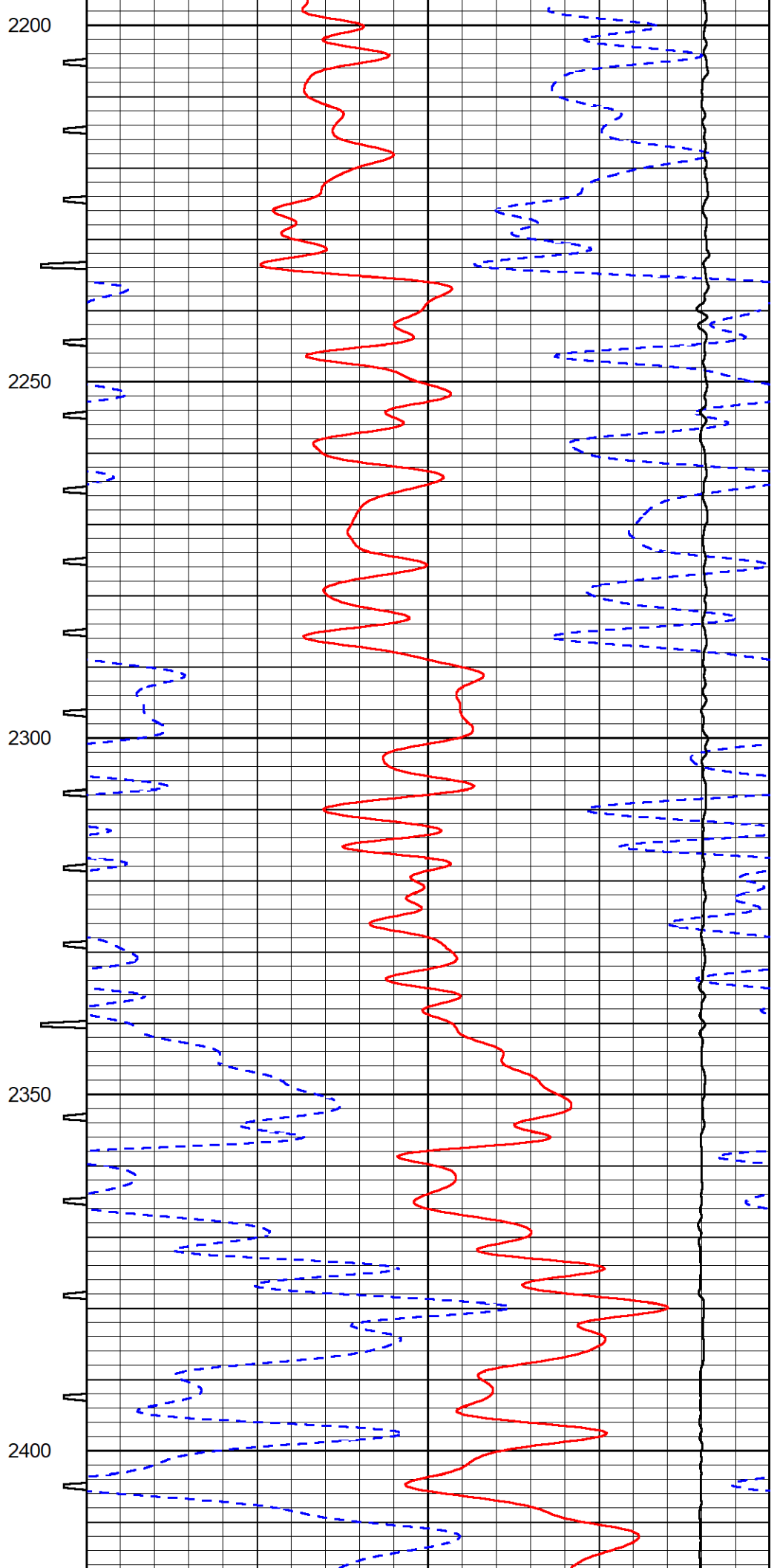
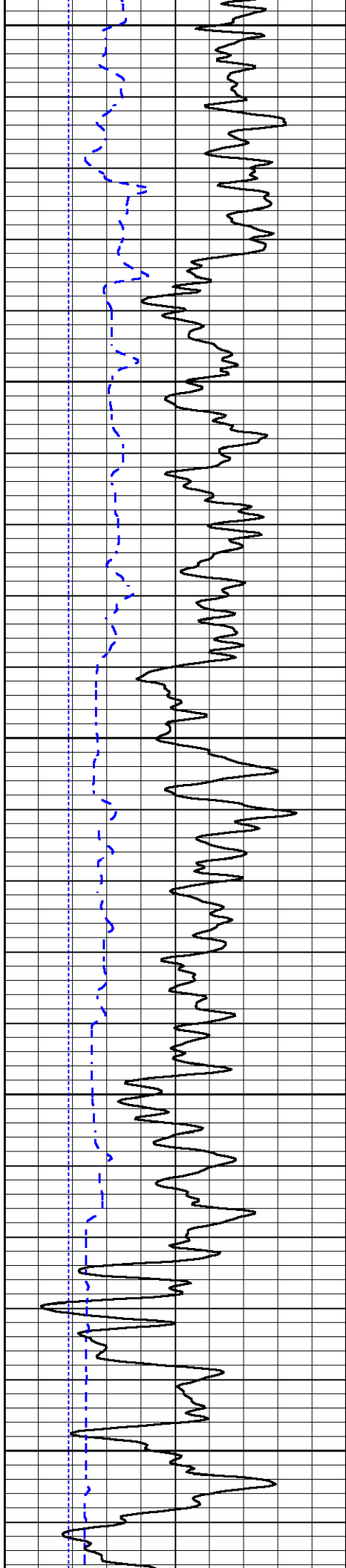
Database File palmer_holloway_6_2.db
 Dataset Pathname stack/pass7.1
 Presentation Format _sonic
 Dataset Creation Mon Nov 29 00:15:43 2021
 Charted by Depth in Feet scaled 1:240

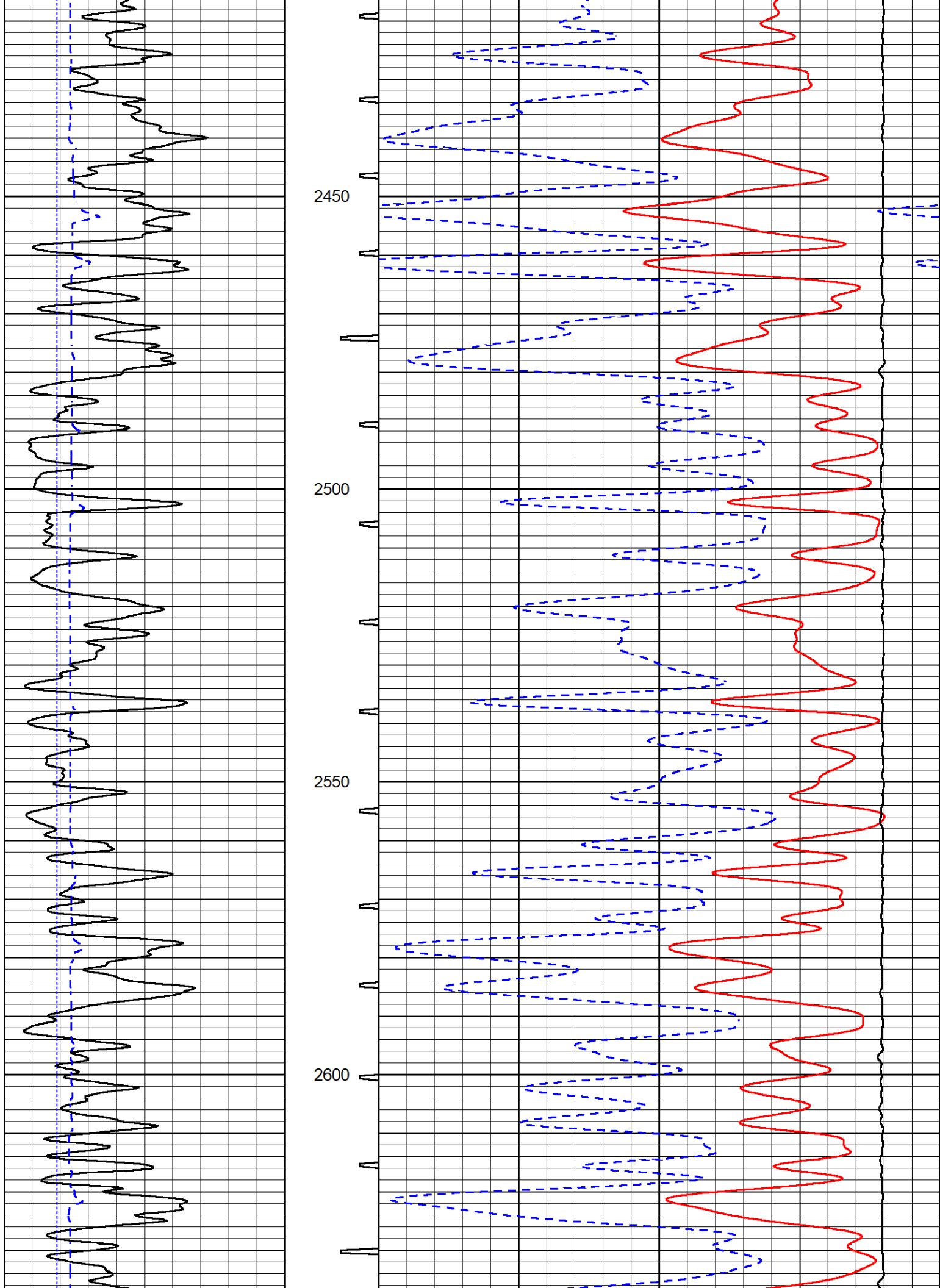
0	Gamma Ray (GAPI)	150	Sonic Int	140	Delta Time (usec/ft) (usec/ft)	40
150	GR (GAPI)	300	5 (msec) 0	30	Sonic Porosity (pu) (pu)	-10
6	Caliper (in)	16		15000	Line Tension (lb)	0

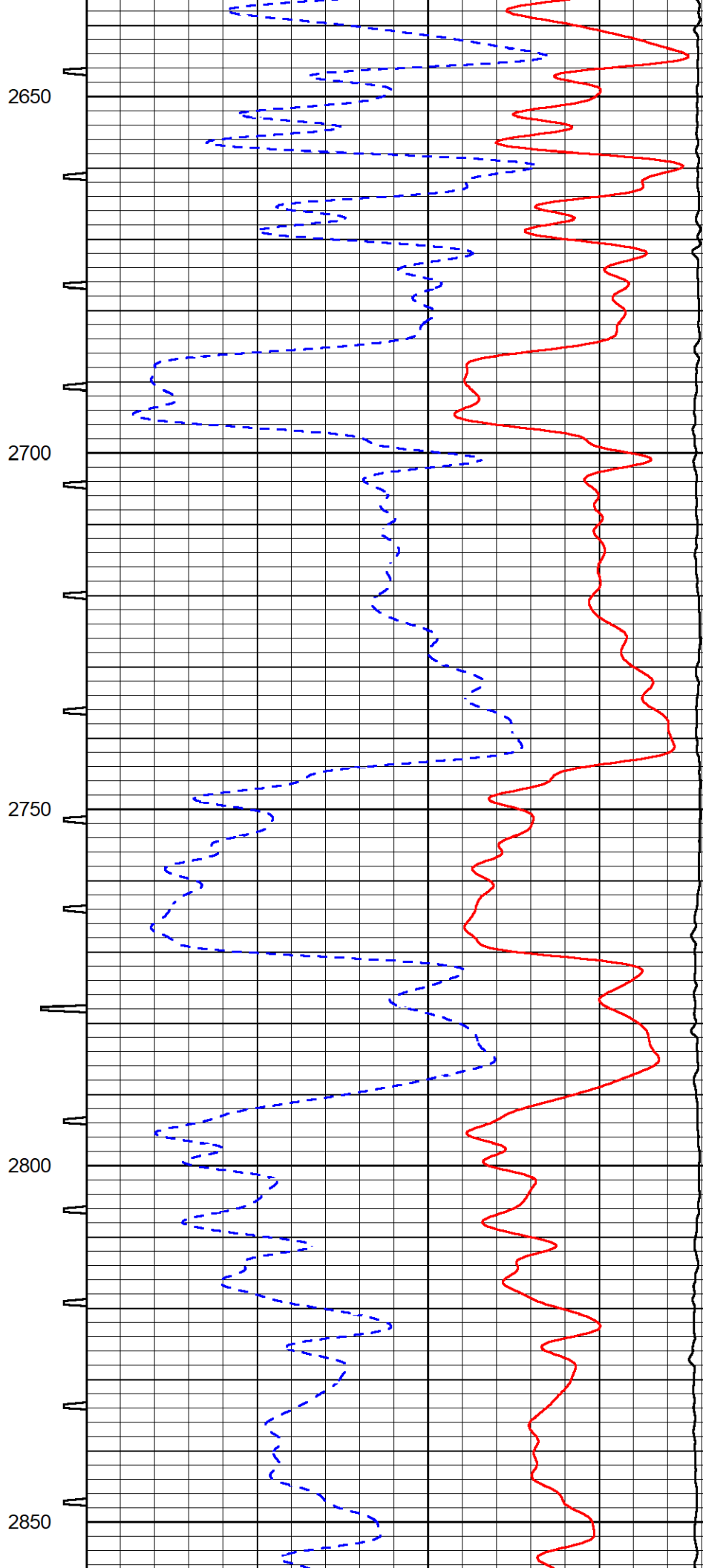
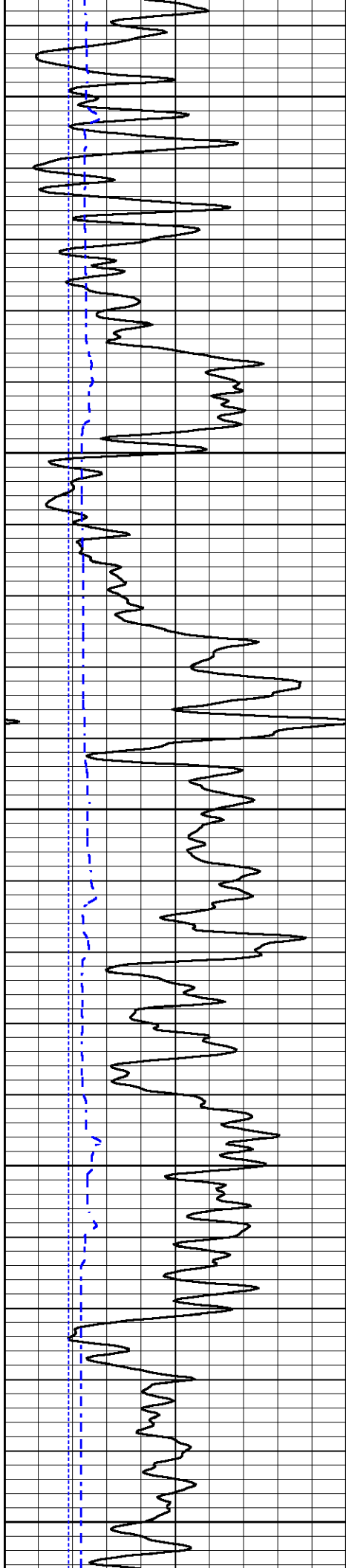


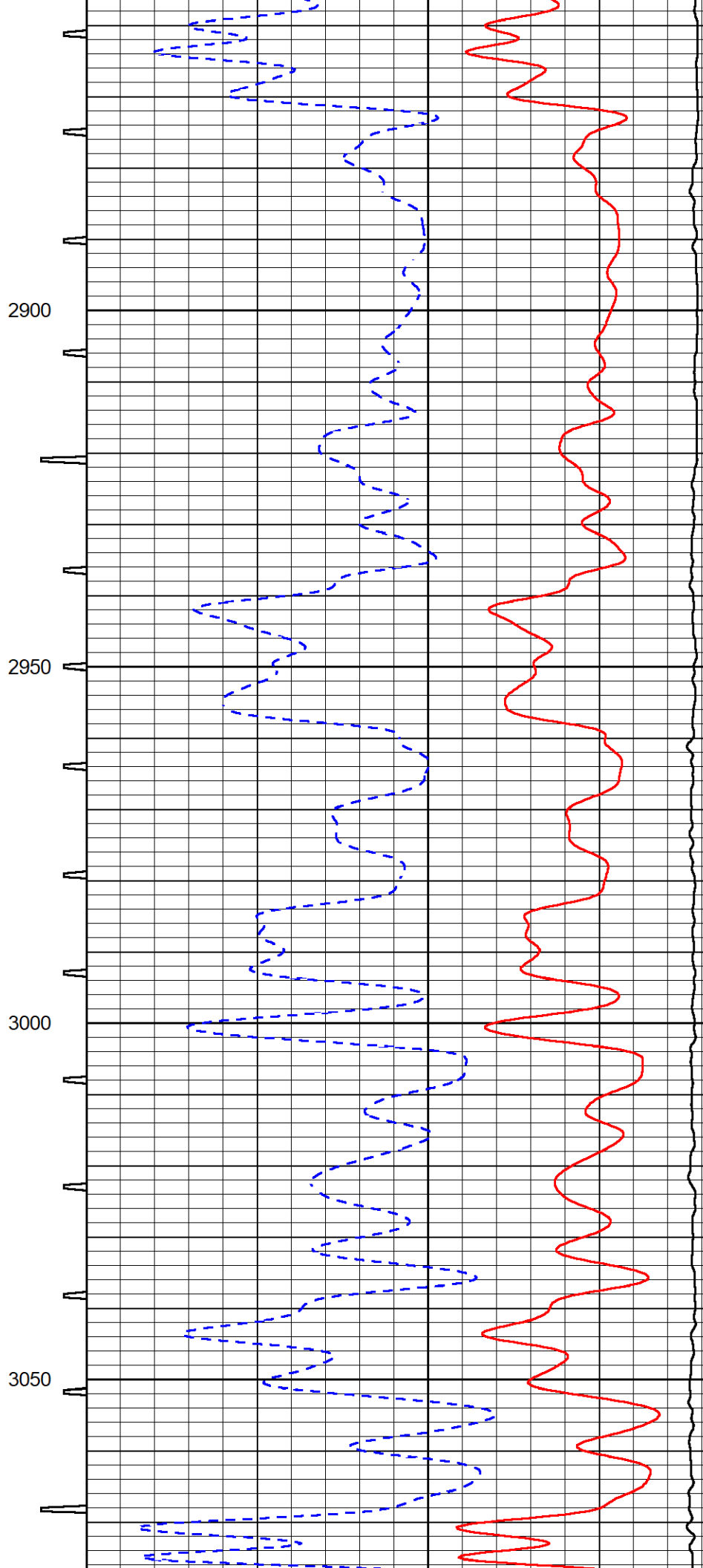
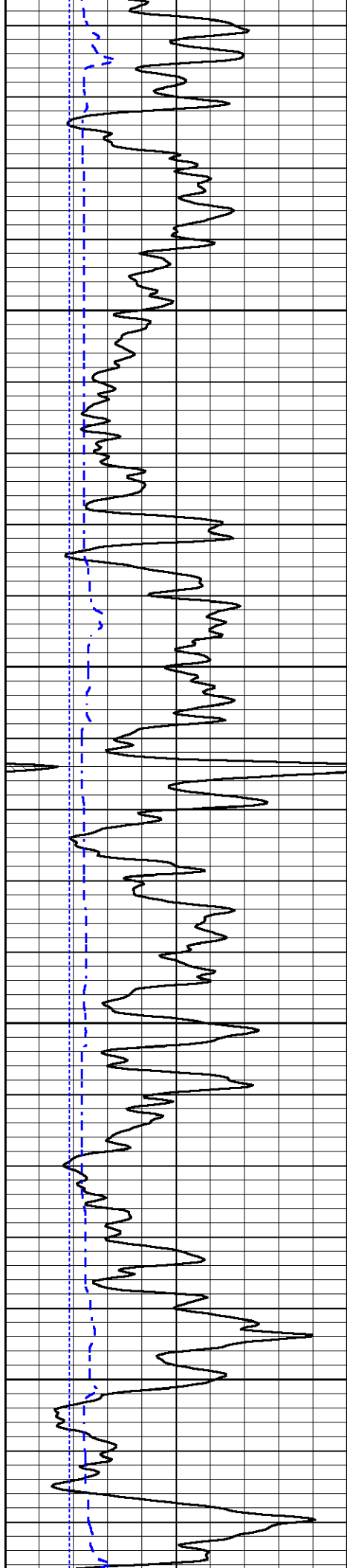


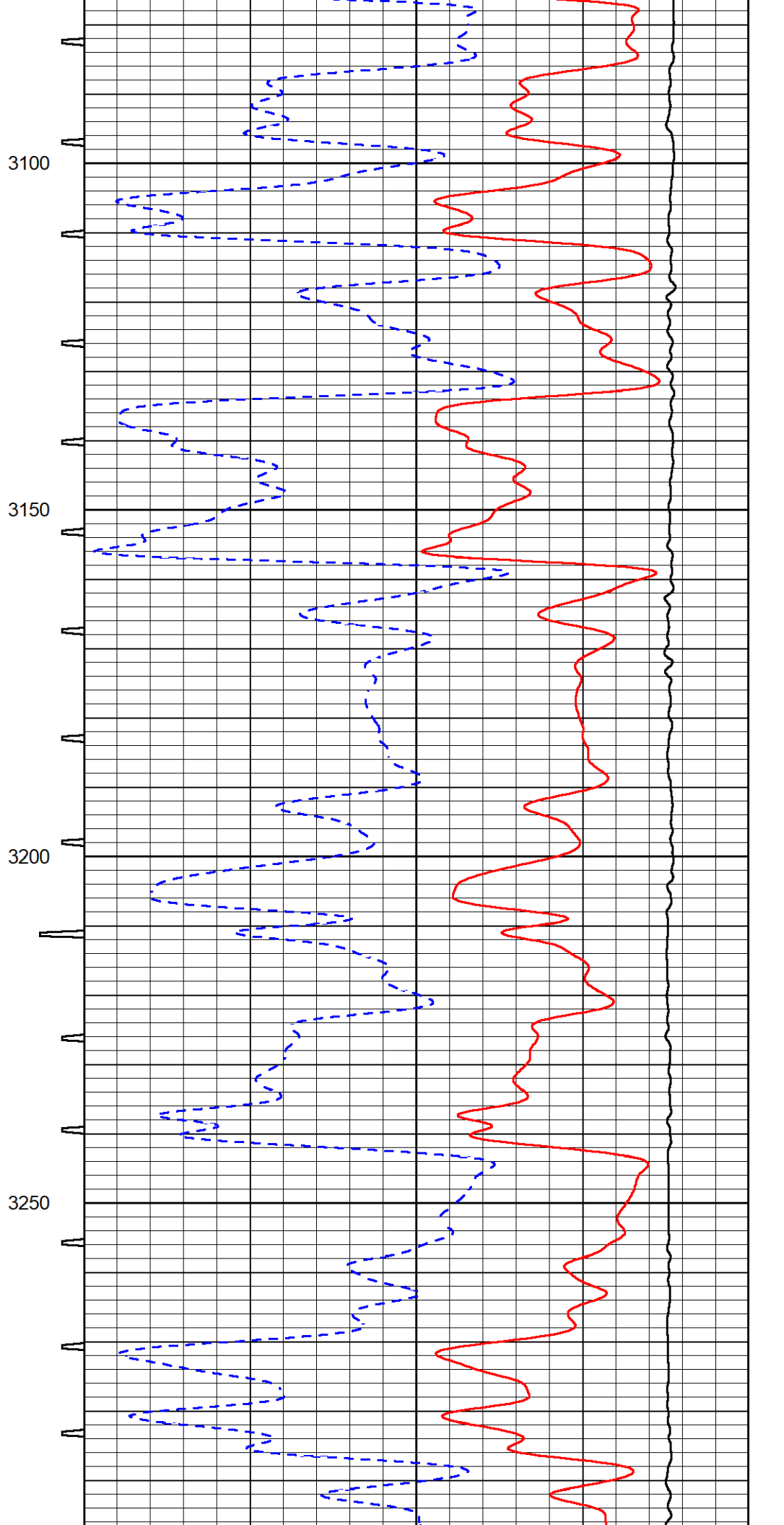
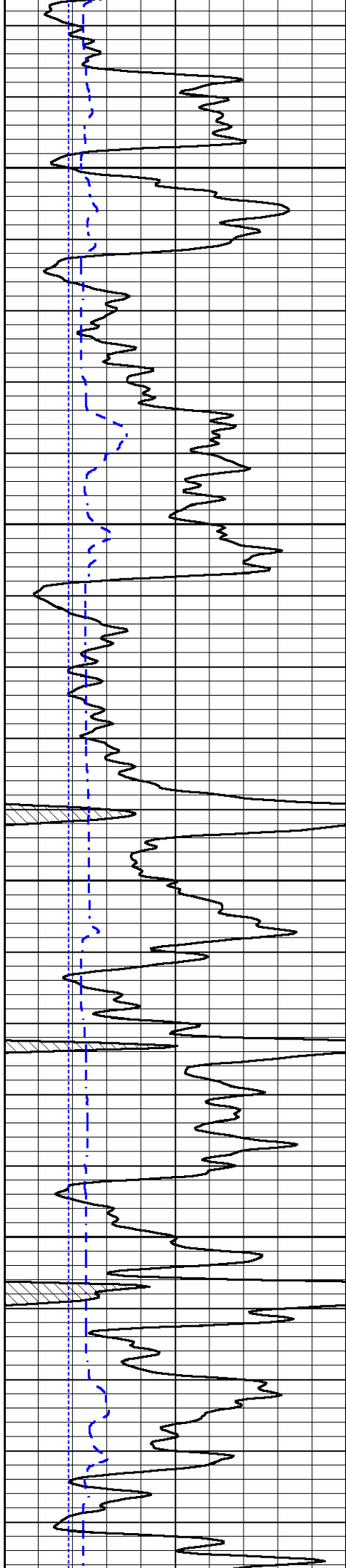


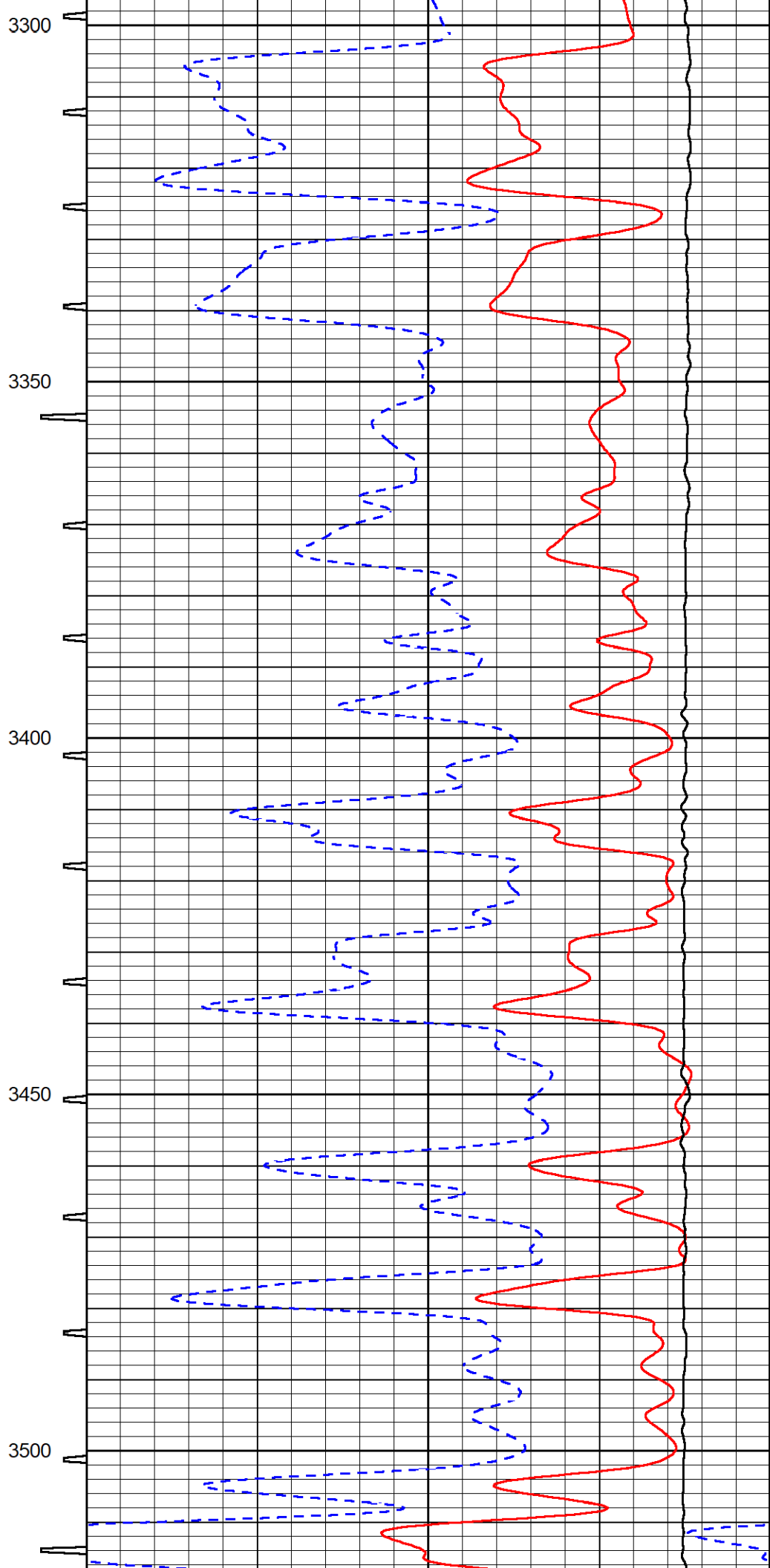
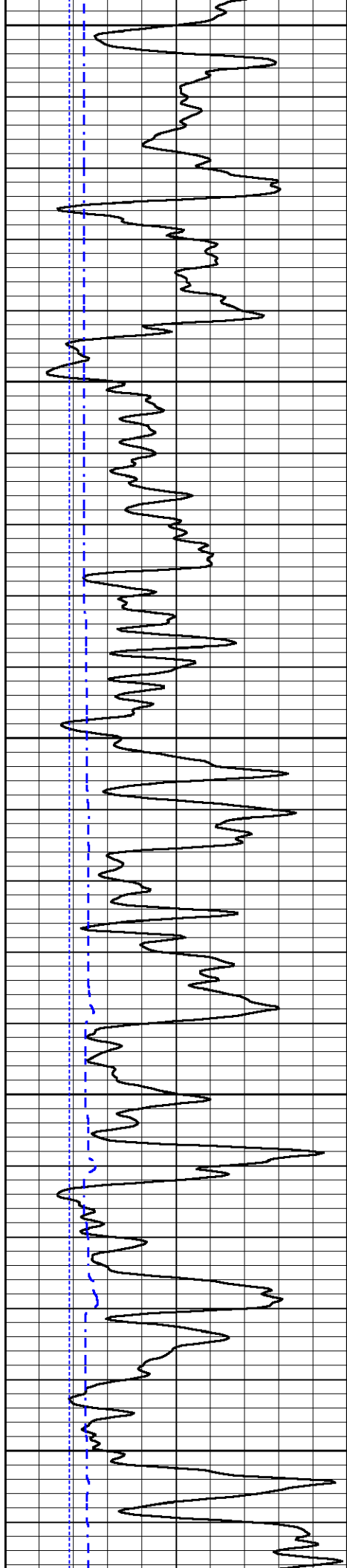


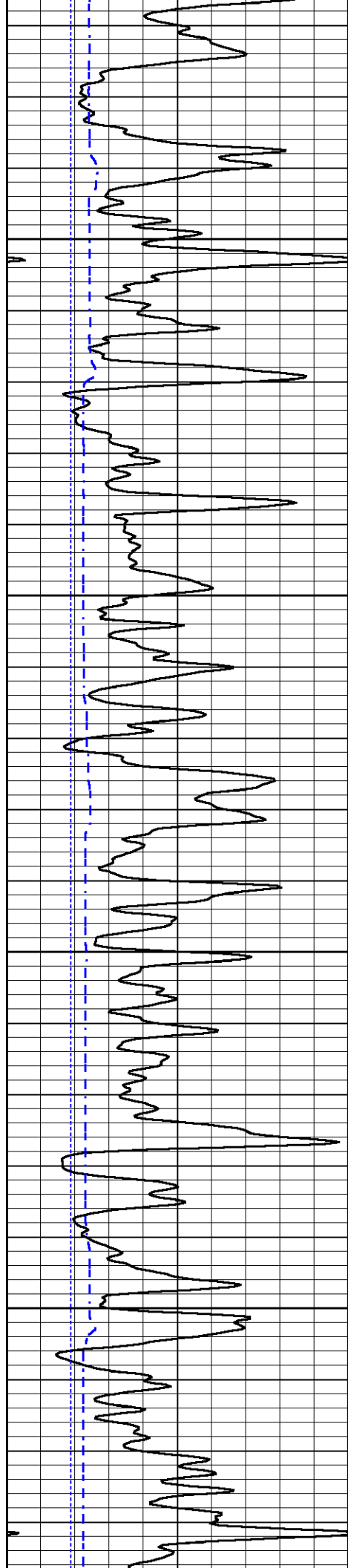










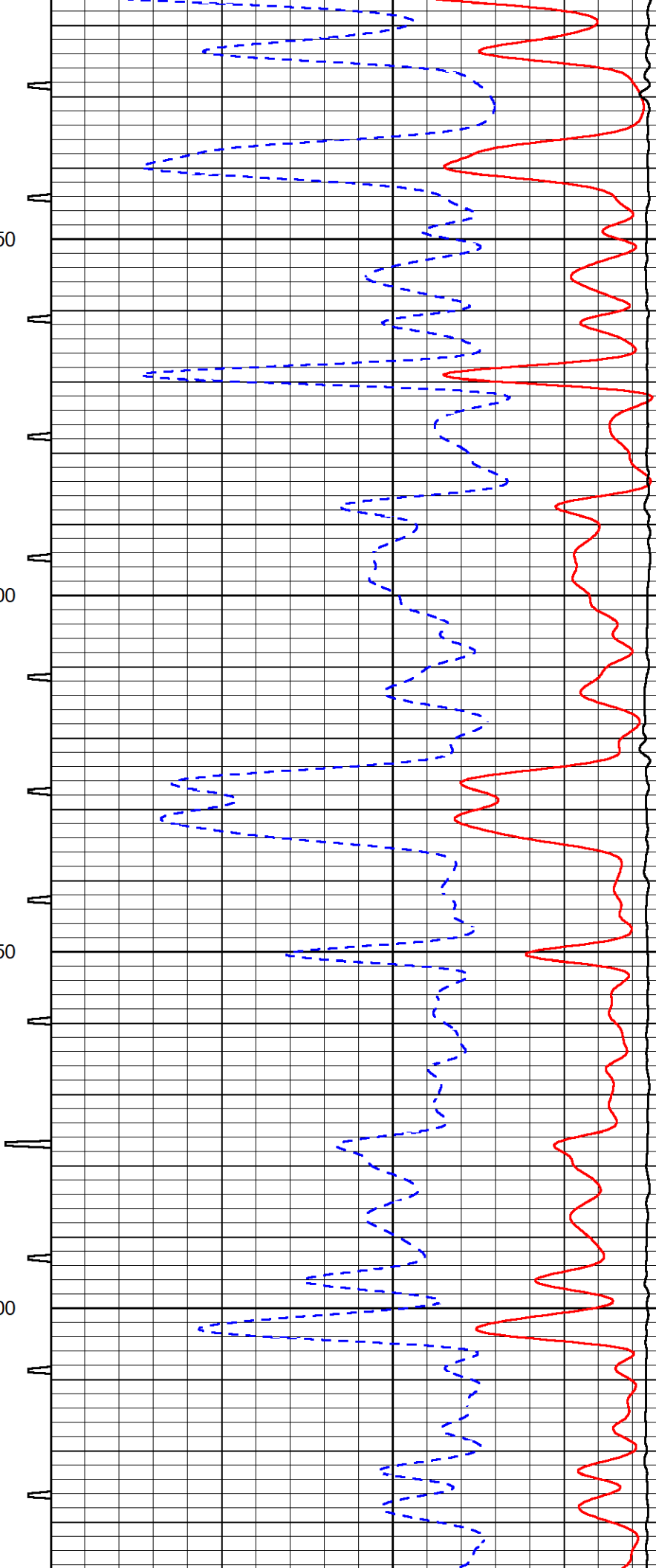


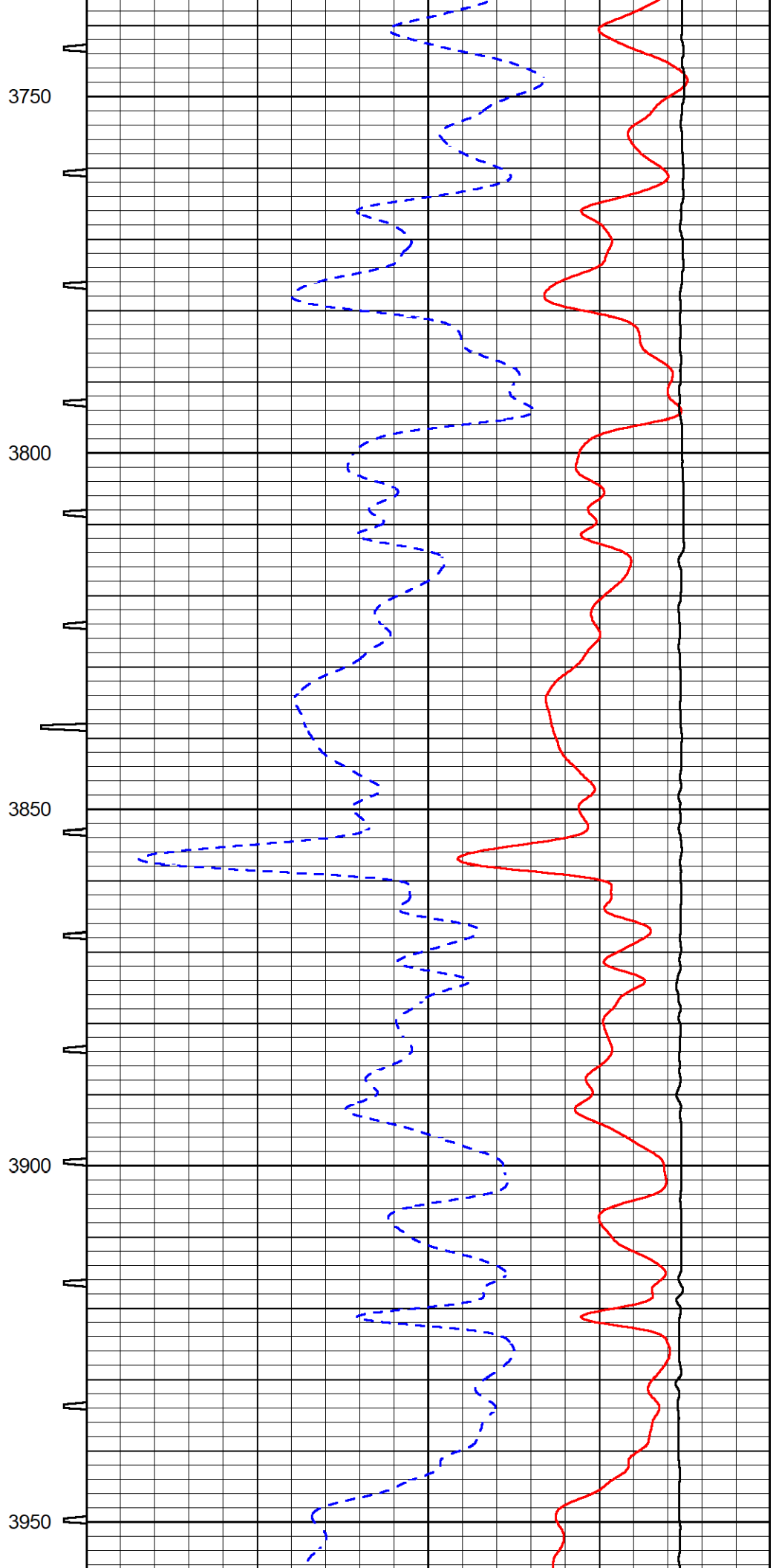
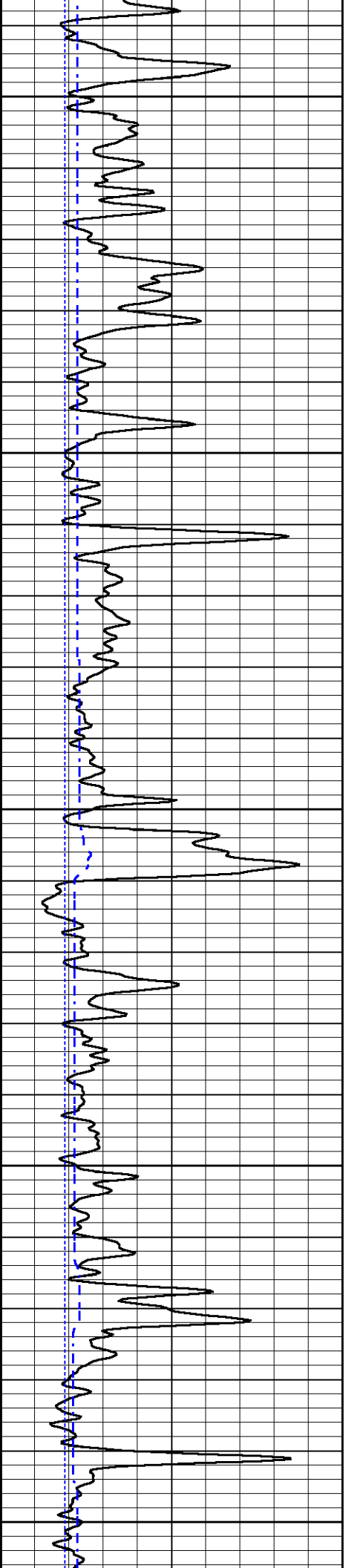
3550

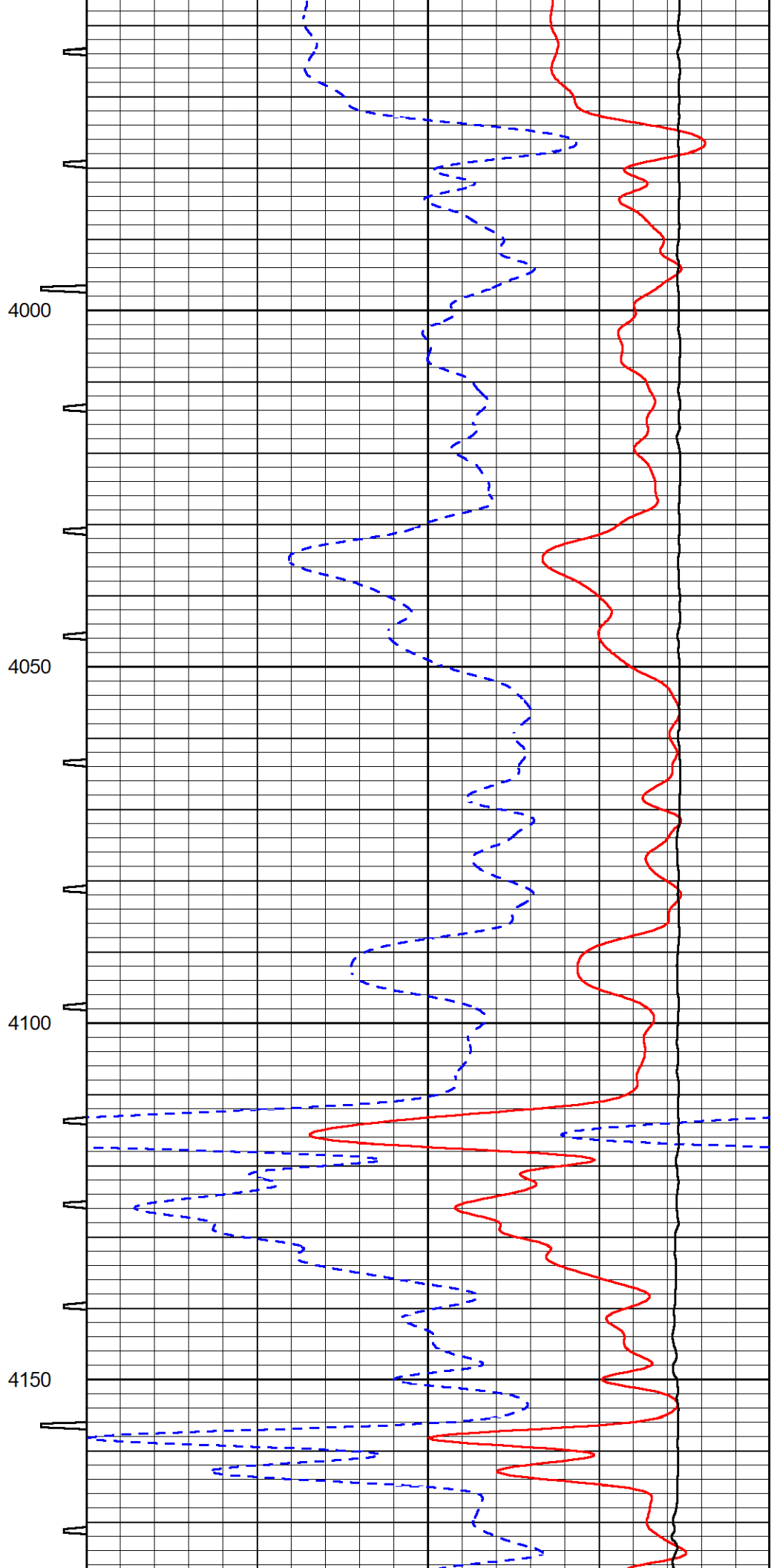
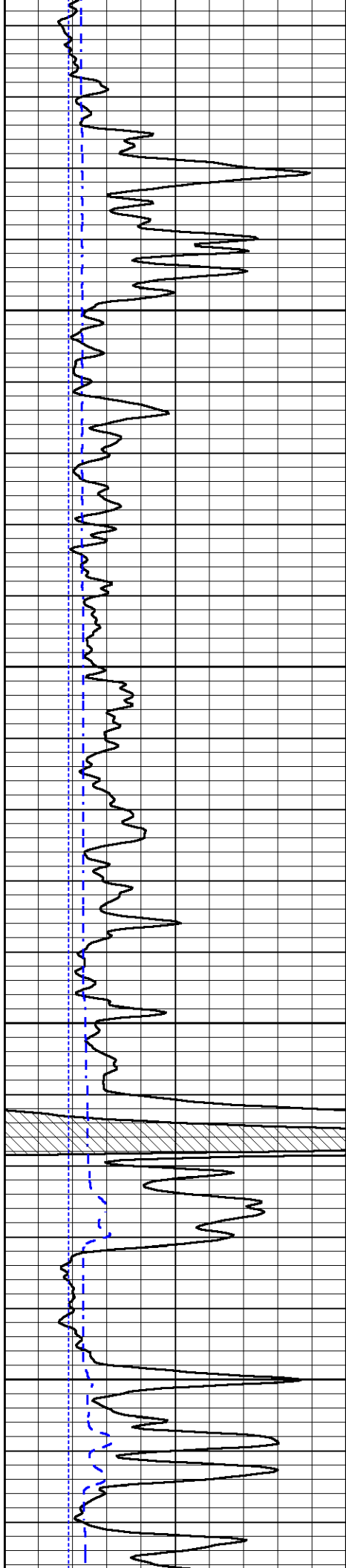
3600

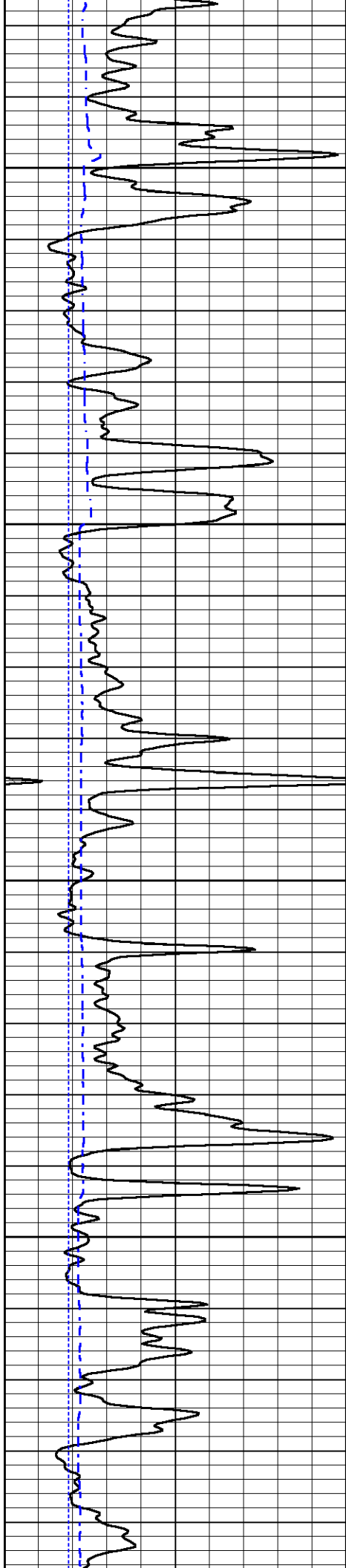
3650

3700







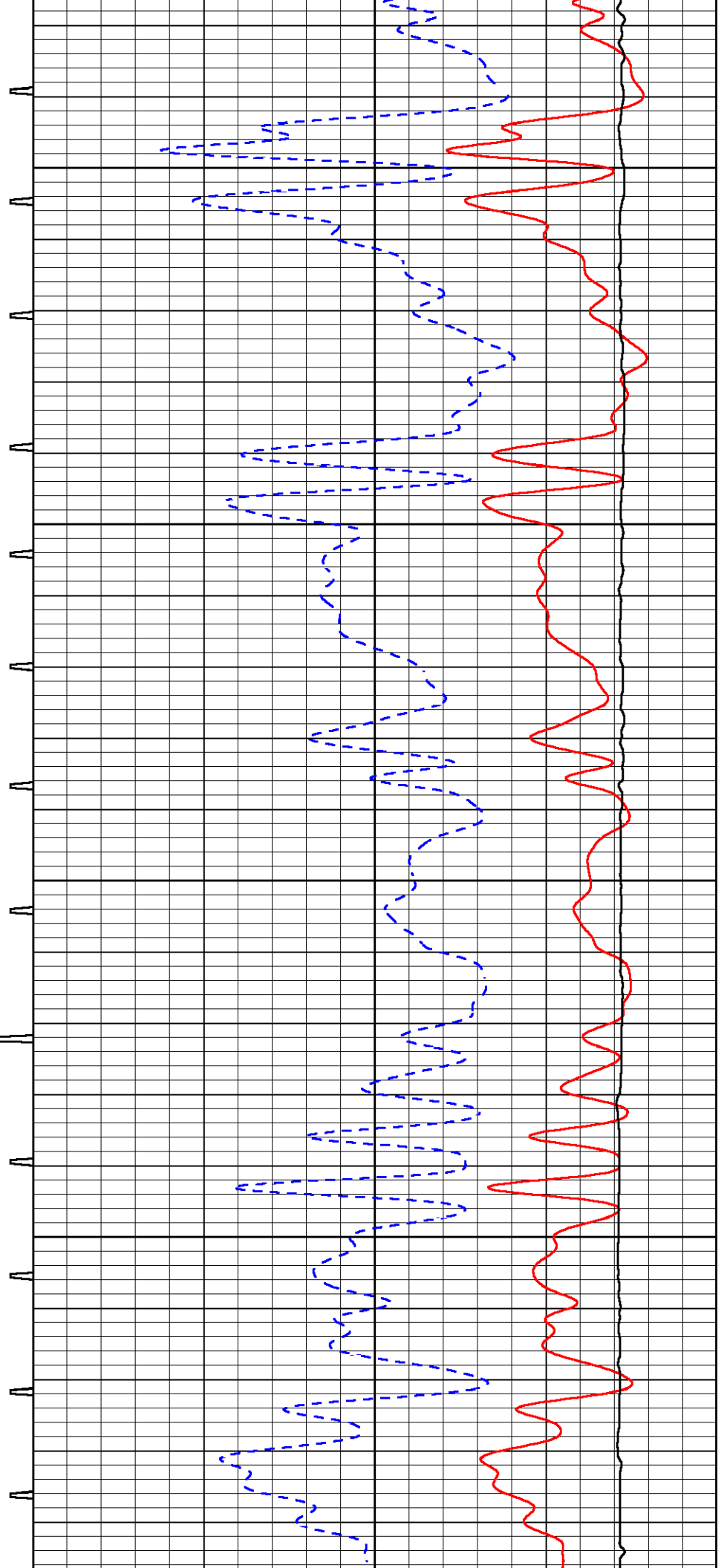


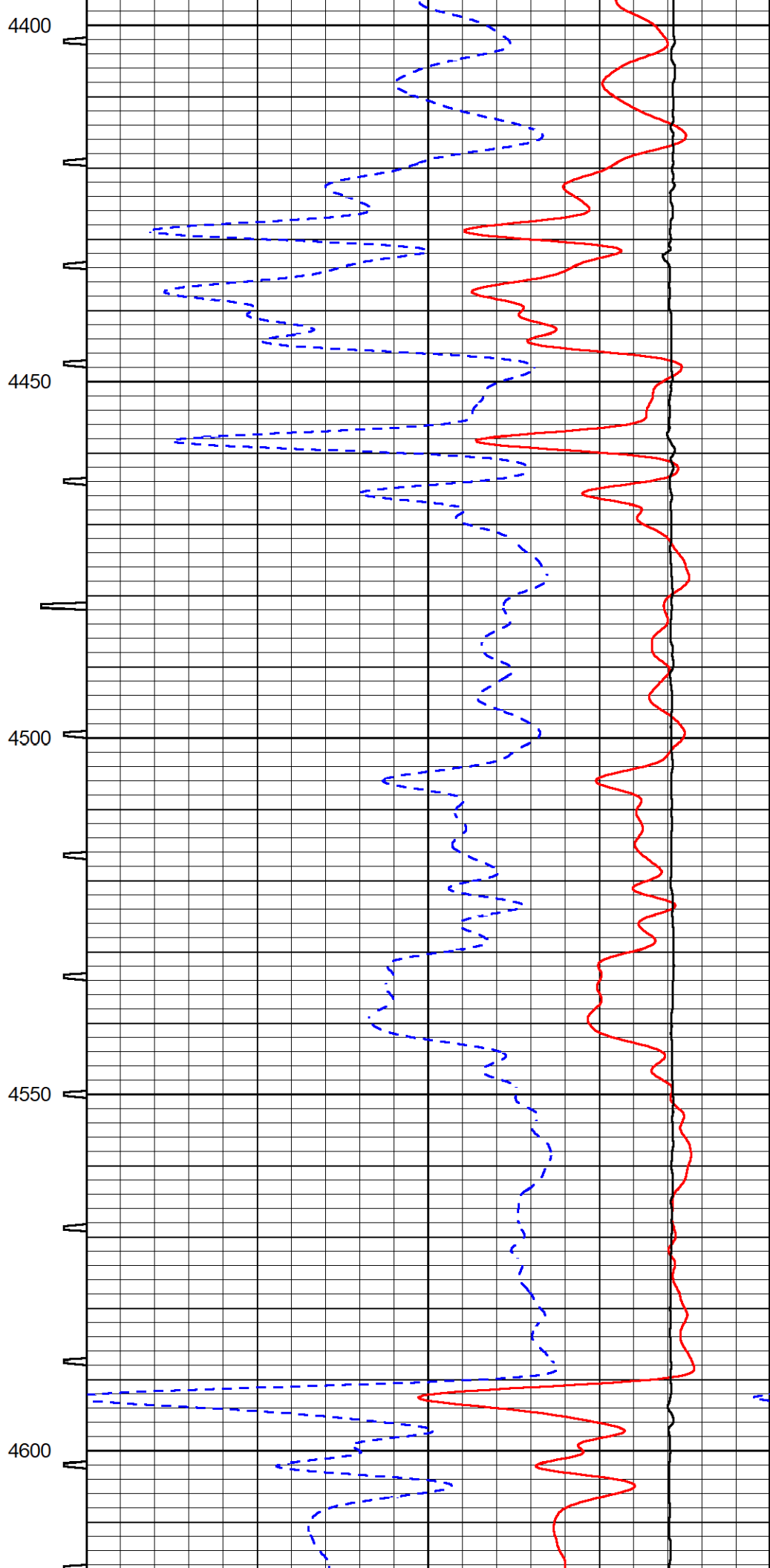
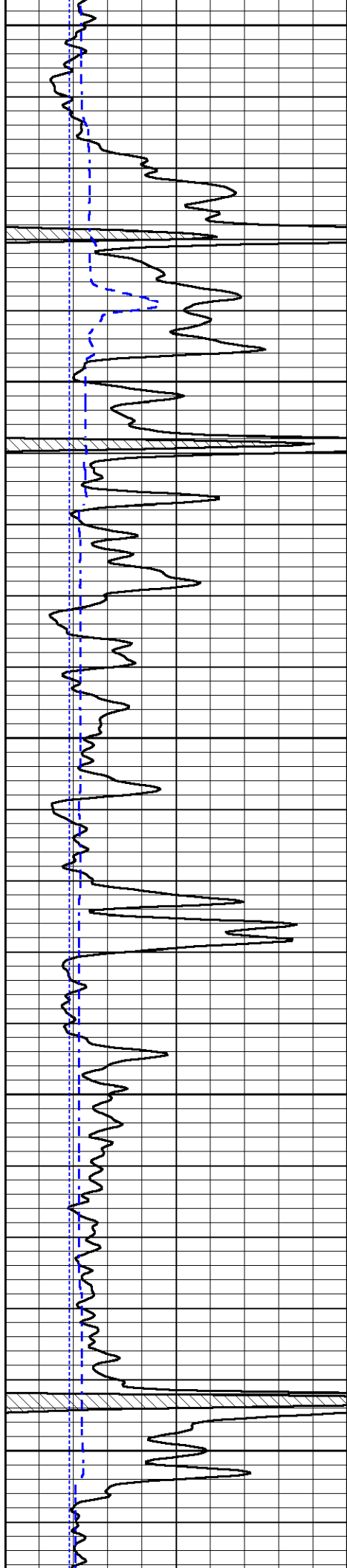
4200

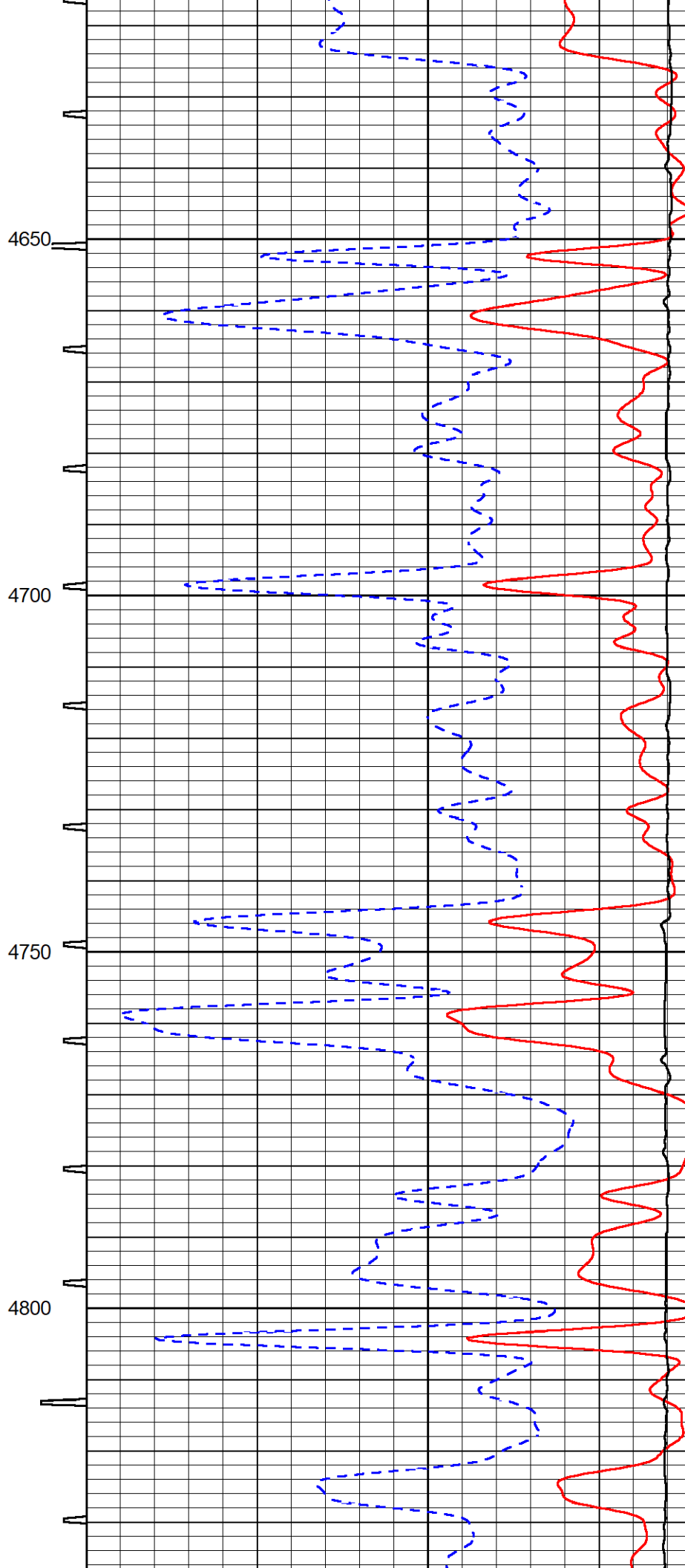
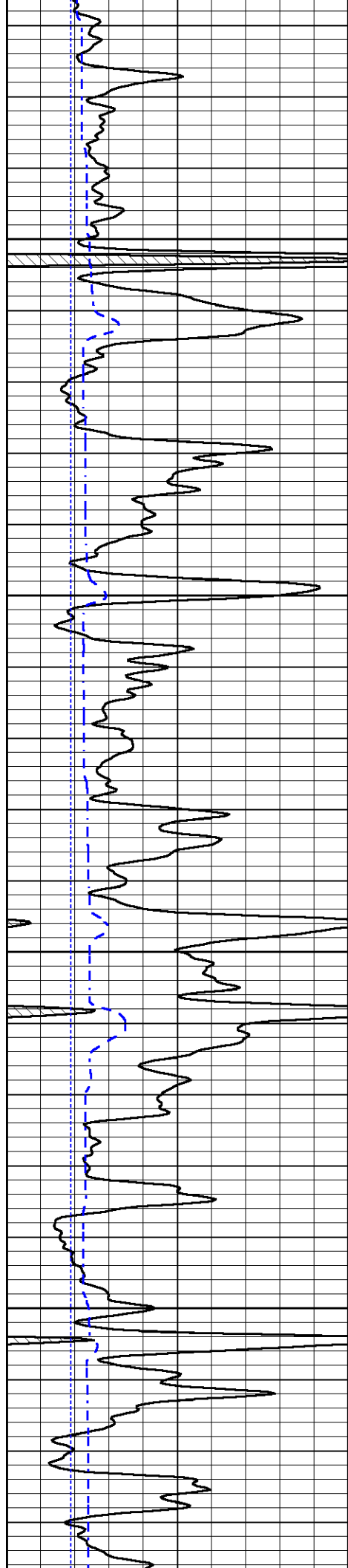
4250

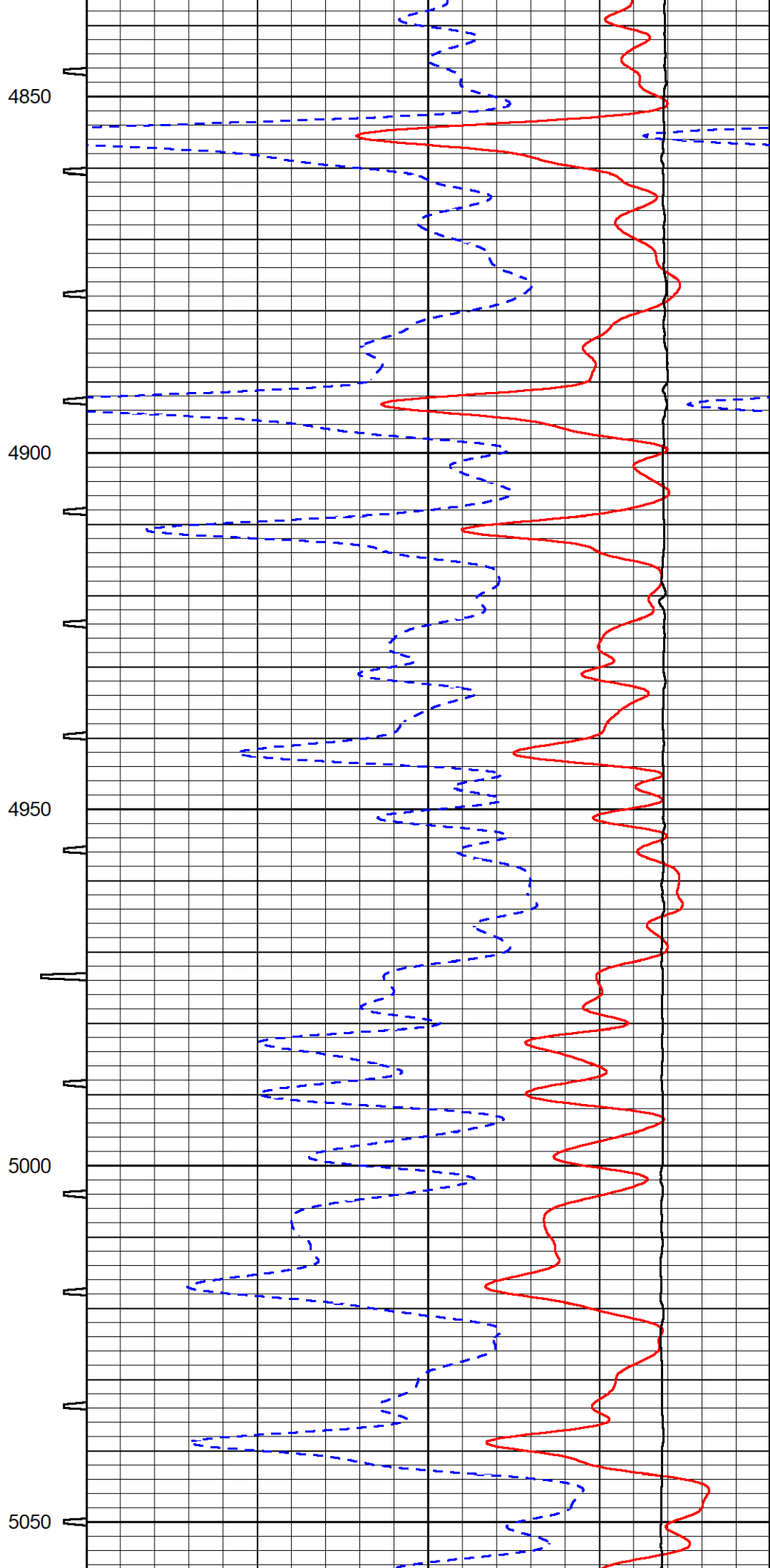
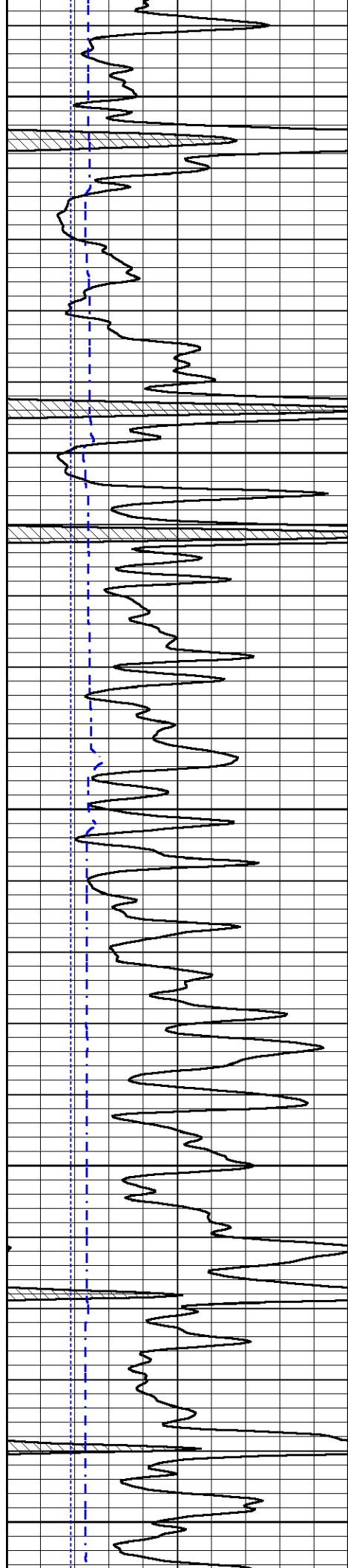
4300

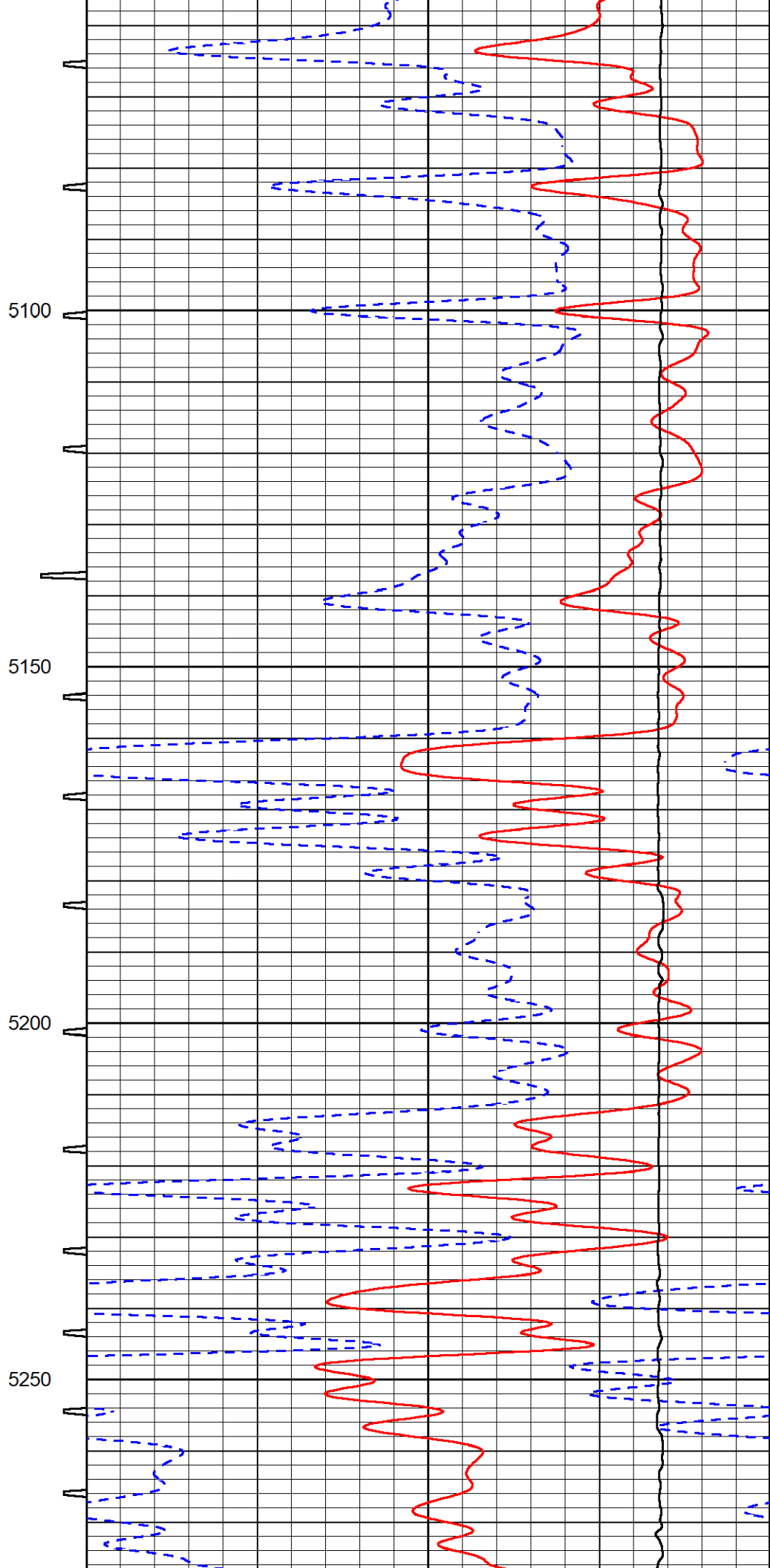
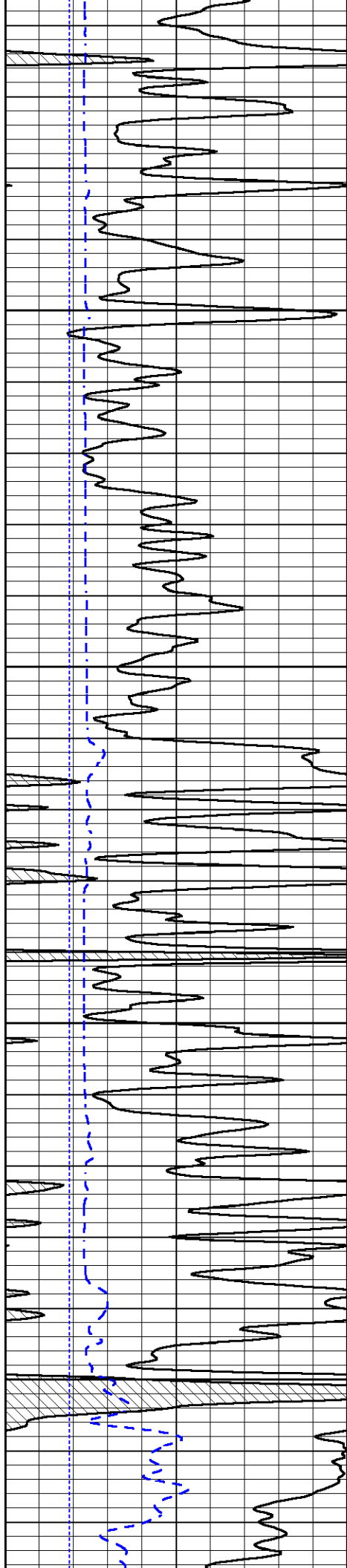
4350

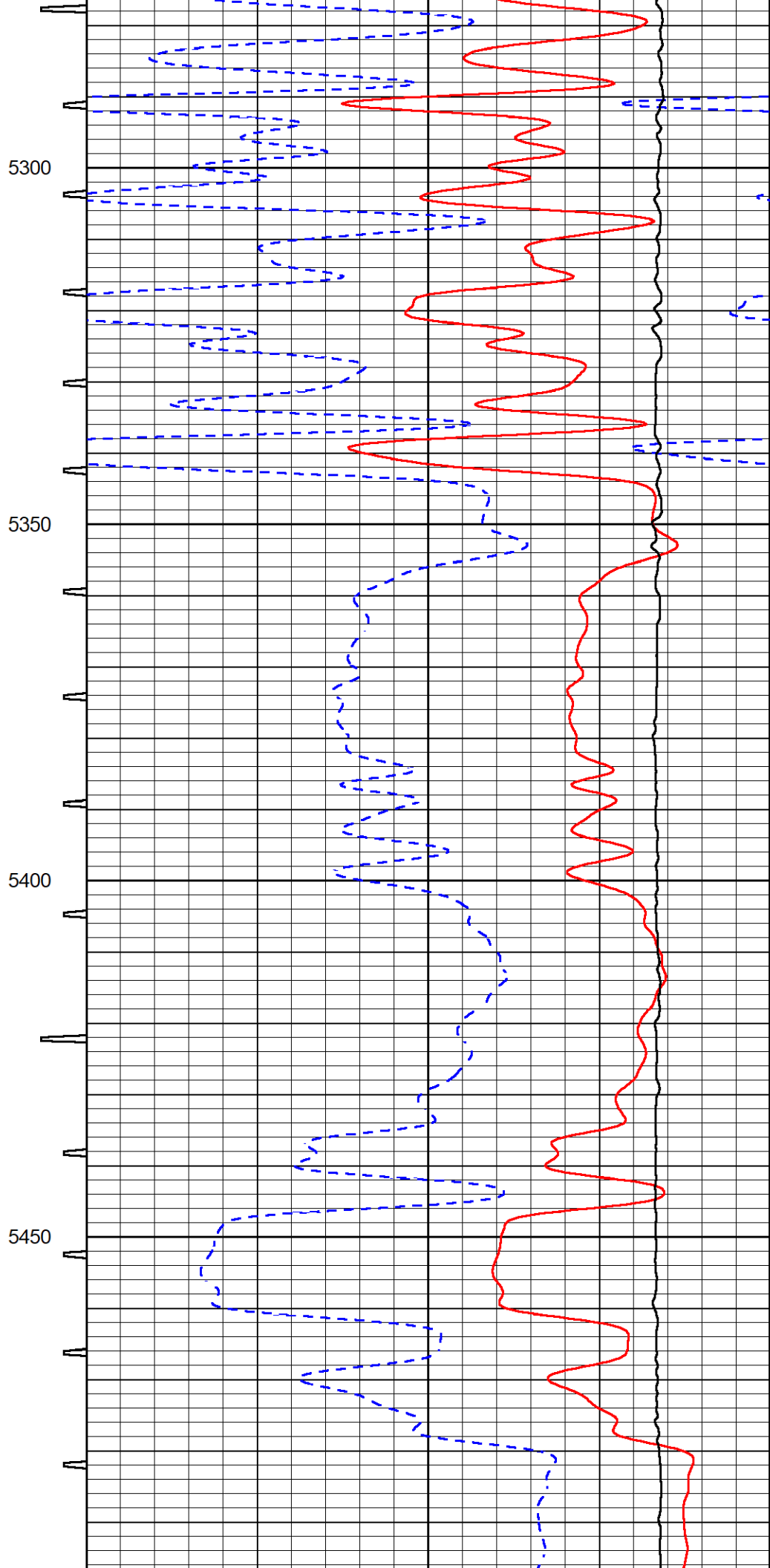
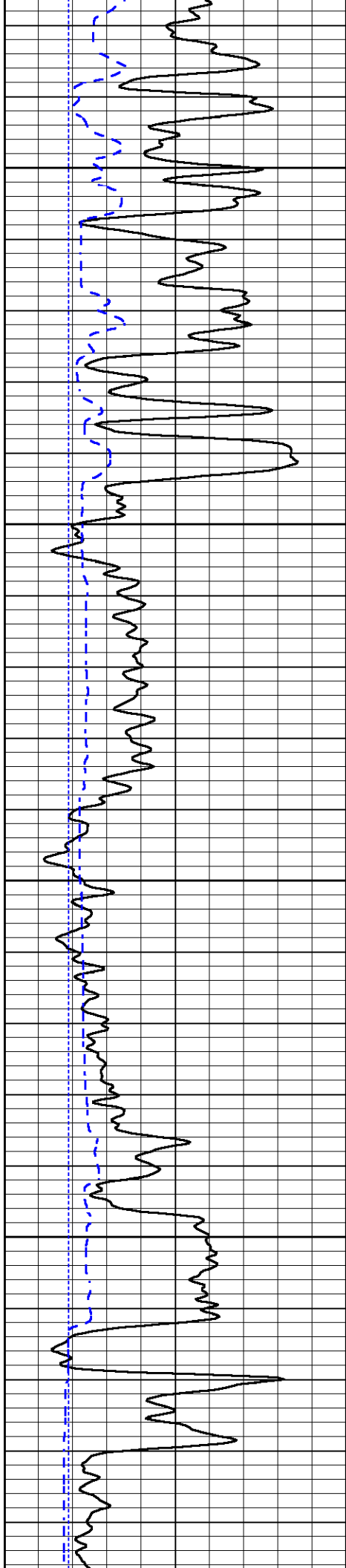


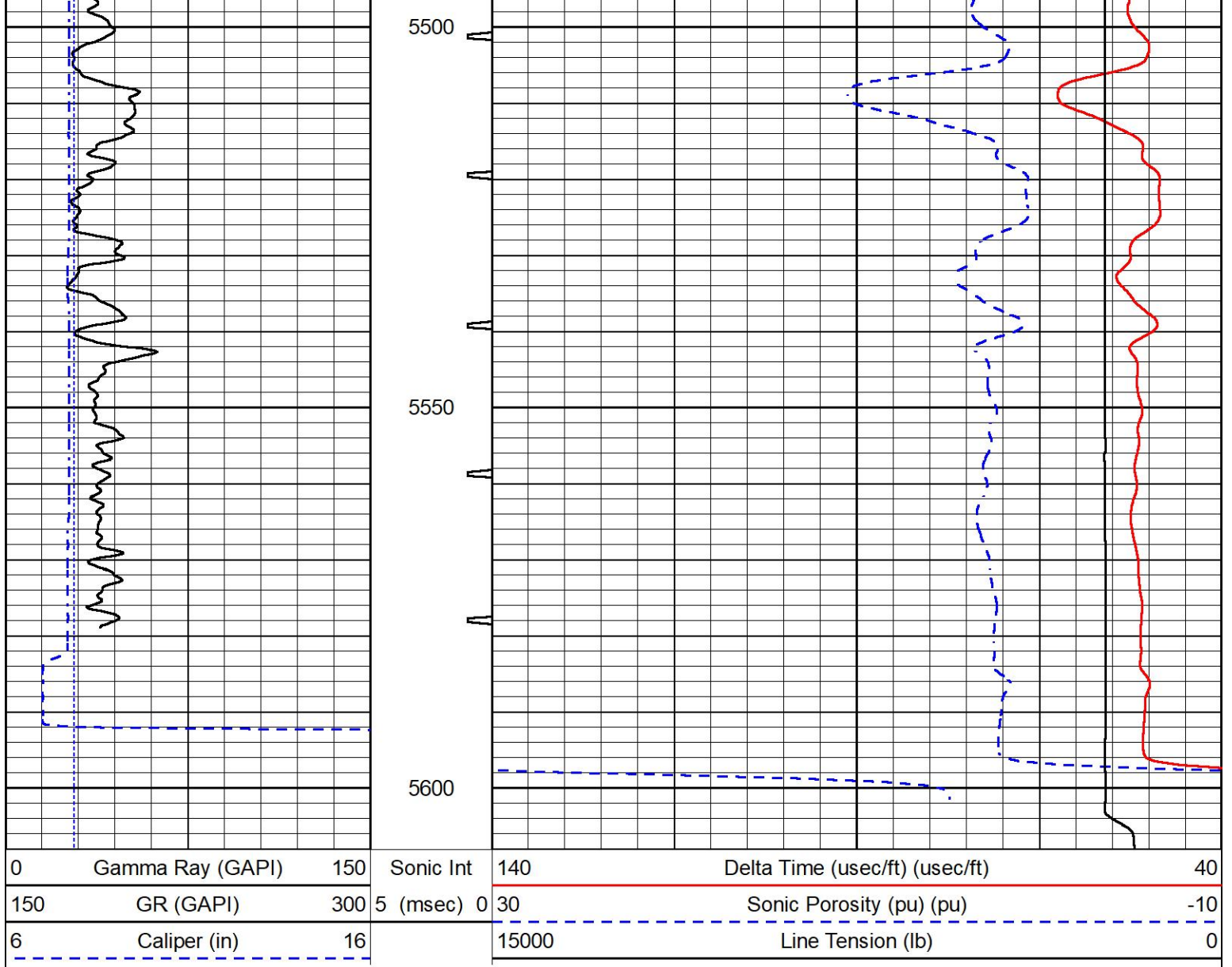












REPEAT SECTION

REPEAT PASS

Database File palmer_holloway_6_2.db
 Dataset Pathname stack/pass2.1
 Presentation Format _sonic
 Dataset Creation Sun Nov 28 23:41:51 2021
 Charted by Depth in Feet scaled 1:240

0	Gamma Ray (GAPI)	150	Sonic Int	140	Delta Time (usec/ft) (usec/ft)	40
150	GR (GAPI)	300	5 (msec) 0	30	Sonic Porosity (pu) (pu)	-10
6	Caliper (in)	16		15000	Line Tension (lb)	0

