



MIDWEST WIRELINE

DUAL INDUCTION LOG

Company Palmer Oil, Inc.
 Well Holloway #6-2
 Field Wildcat
 County Haskell State Kansas

Location: API #: 15-081-22238-00-00
 2581 FNL & 1452 FWL
 SEC 6 TWP 28S RGE 33W
 Permanent Datum Ground Level Elevation 3034
 Log Measured From Kelly Bushing
 Drilling Measured From Kelly Bushing
 Other Services
 CNL/CDL
 MEL/BHCS
 Elevation
 K.B. 3047
 D.F.
 G.L. 3034

Date	11/28/2021
Run Number	One
Depth Driller	5600
Depth Logger	5604
Bottom Logged Interval	5603
Top Log Interval	1650
Casing Driller	8.625 @ 1654
Casing Logger	1649
Bit Size	7.875
Type Fluid in Hole	Chemical
Salinity, ppm CL	1100
Density / Viscosity	9.3 45
pH / Fluid Loss	9.3 6.4
Source of Sample	FLOWLINE
Rm @ Meas. Temp	.95 @ 72
Rmt @ Meas. Temp	.71 @ 72
Rmc @ Meas. Temp	1.28 @ 72
Source of Rmf / Rmc	CHARTS
Rm @ BHT	.52 @ 132
Operating Rig Time	4 Hours
Max Rec. Temp. F	132
Equipment Number	P-108
Location	HAYS
Recorded By	J. Henrickson
Witnessed By	Kevin Timson

<<< Fold Here >>>

All interpretations are opinions based on inferences from electrical or other measurements and Midwest Wireline LLC cannot and does not guarantee the accuracy or correctness of any interpretation, and Midwest Wireline LLC will not be liable or responsible for any loss, costs, damages, or expenses incurred or sustained by anyone resulting from any interpretation made by any of our officers, agents or employees.

Comments

N/A DENOTES NOT AVAILABLE OR NON-APPLICABLE.

Garden City Kansas
 20 South to 50 Rd, West to GG, 2 1/2 South,
 East Into

Log Measured From: Kelly Bushing 13 Ft. Above Permanent Datum

THANK YOU FOR USING MIDWEST WIRELINE LLC
 785-625-3858

Your Midwest Wireline Crew

Engineer: J. Henrickson
 Operator:
 Operator:
 Operator:

This Log Record Was Witnessed By




Primary Witness: Kevin Timson
 Secondary Witness:
 Secondary Witness:
 Secondary Witness:

Log Variables

DatabaseC:\ProgramData\Warrior\Data\palmer_holloway_6_2.db
 Dataset field/well/stack/pass4.1/_vars_

Top - Bottom

A	BOREID in	BOTTEMP degF	CASEOD in	CASETHCK in	FLUIDDEN g/cc	M	MATRXDEN g/cc
1	7.875	134	5.5	0	1	2	2.71
NPORSEL	PERFS	SNDERR mmho/m	SNDERRM mmho/m	SPSHIFT mV	SRFTEMP degF	SZCOR	TDEPTH ft
Limestone	0	0	0	505	55	Off	5604

Sensor	Offset (ft)	Schematic	Description	Length (ft)	O.D. (in)	Weight (lb)
GR	32.75		GR-M&W (89-M&W)	3.00	3.50	50.00
CNLSC CNSSC	29.65 28.90		CNT-M&W (tk10-MW)	5.00	3.50	100.00
LSD DCAL SSD	20.60 20.58 20.10		CDL-M&W (915-956)	8.50	4.00	250.00
RLL3F RLL3	15.50 15.50		DIL-PSI HIGH TEMP (959-1032)	18.25	3.50	220.00
CILD	8.33					

CILM 4.50

SP 0.20

Dataset: palmer_holloway_6_2.db: field/well/stack/pass4.1
 Total length: 34.75 ft
 Total weight: 620.00 lb
 O.D.: 4.00 in



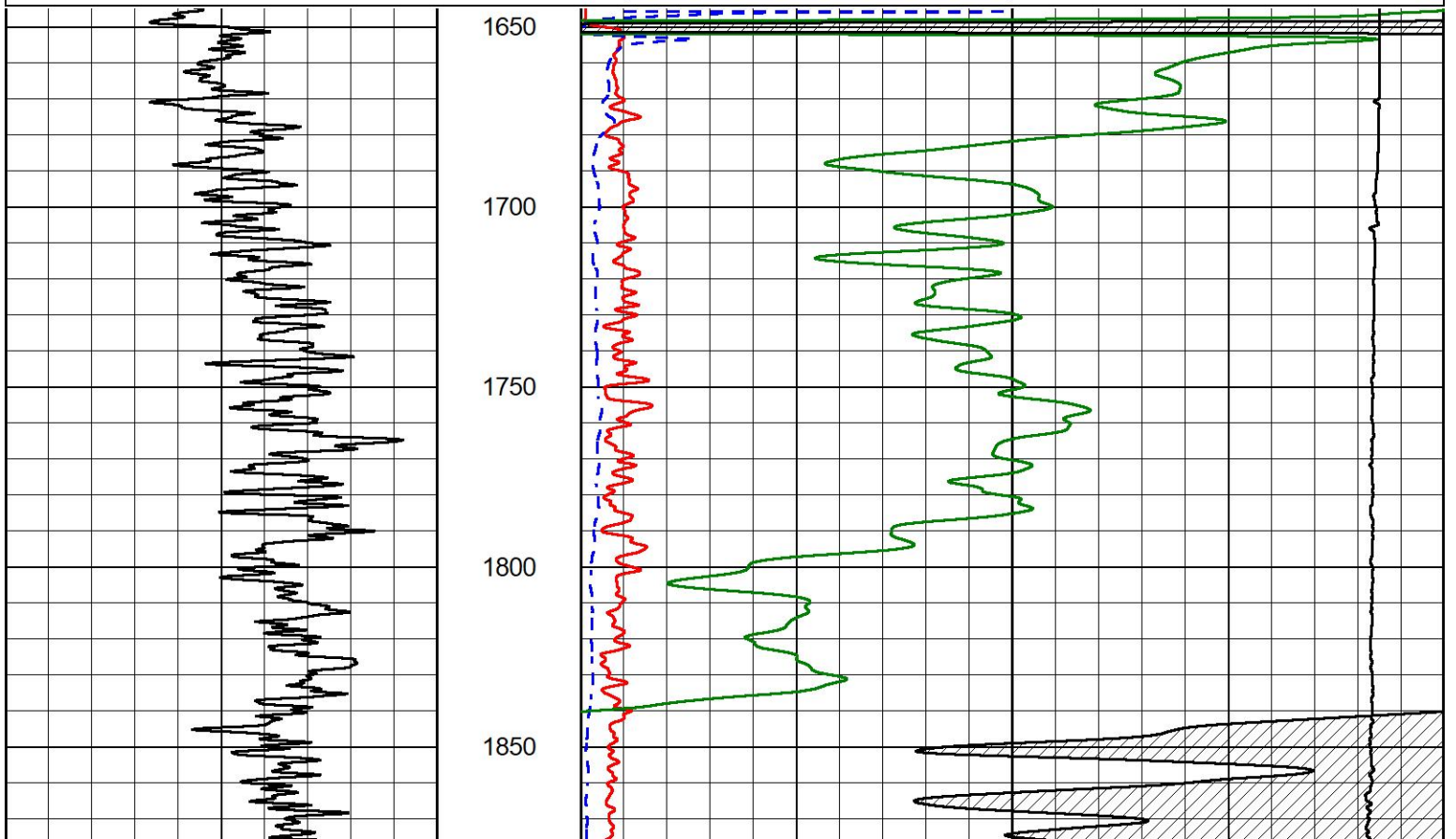
MIDWEST WIRELINE

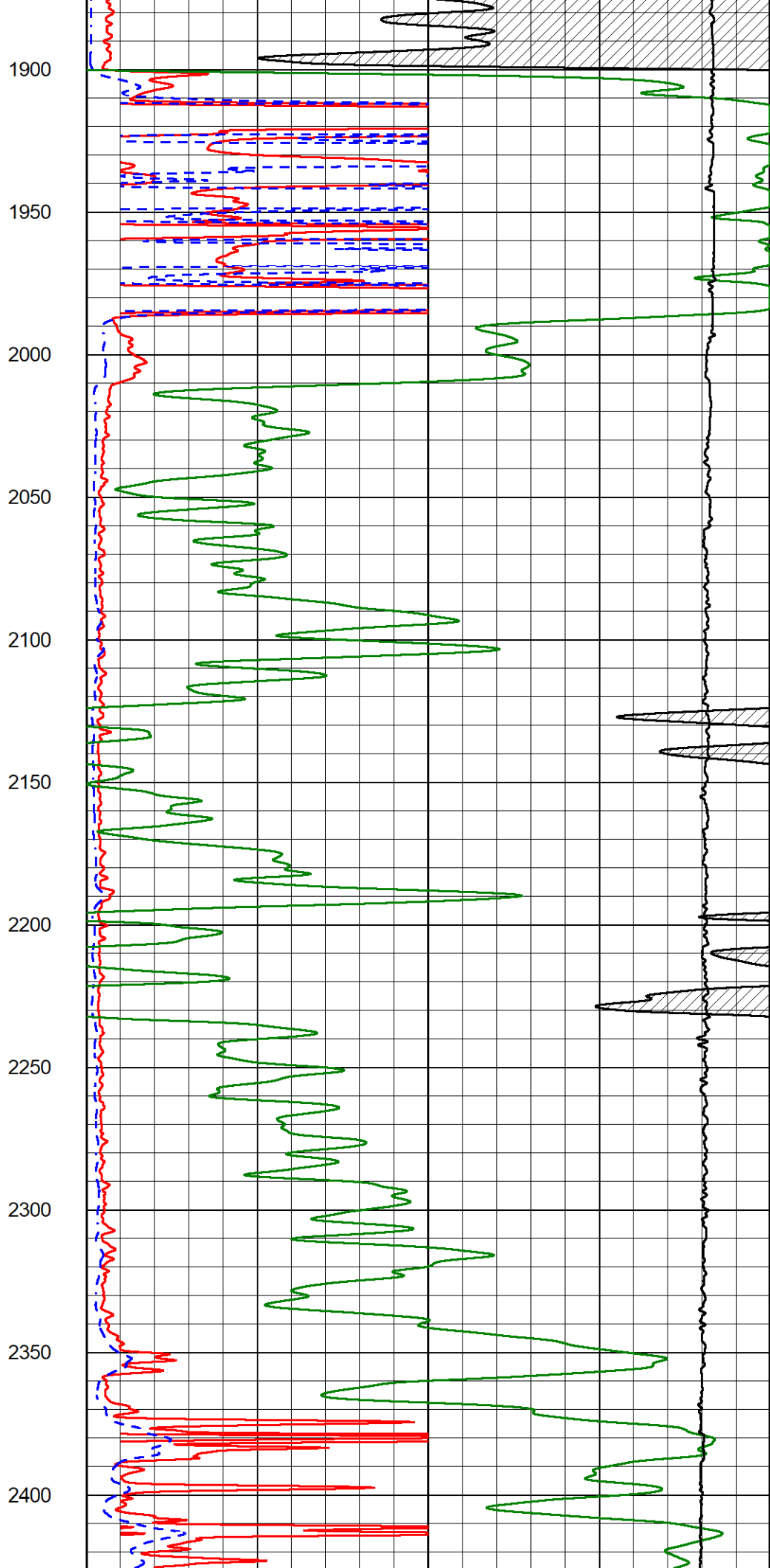
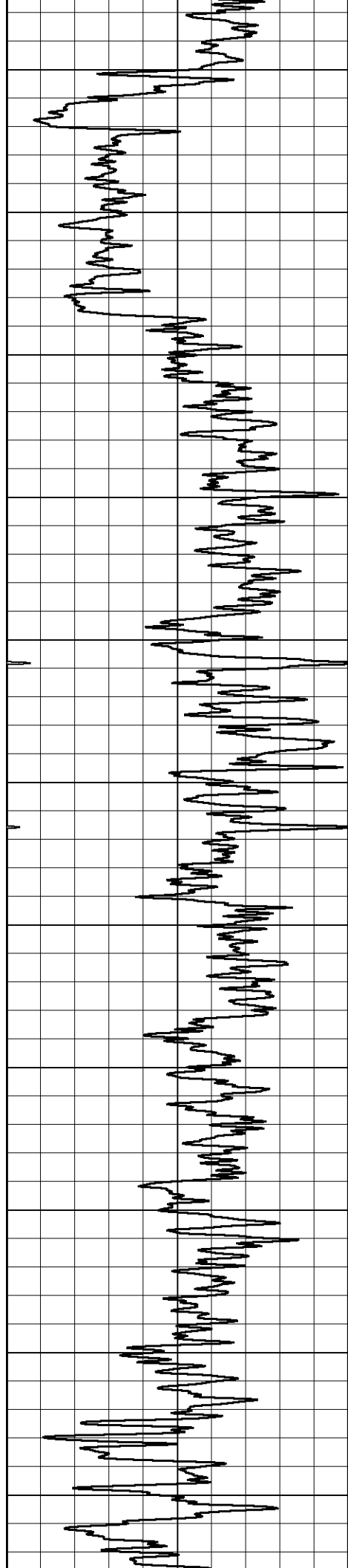
2" SCALE RESISTIVITY

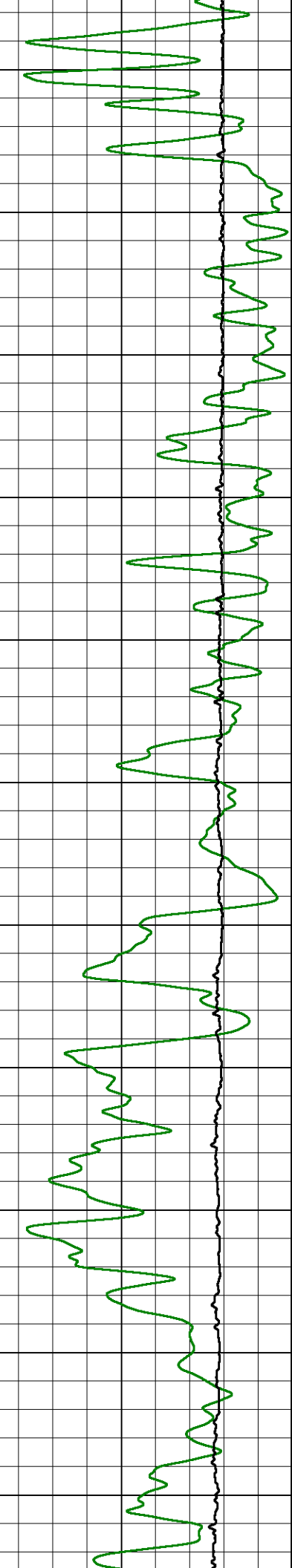
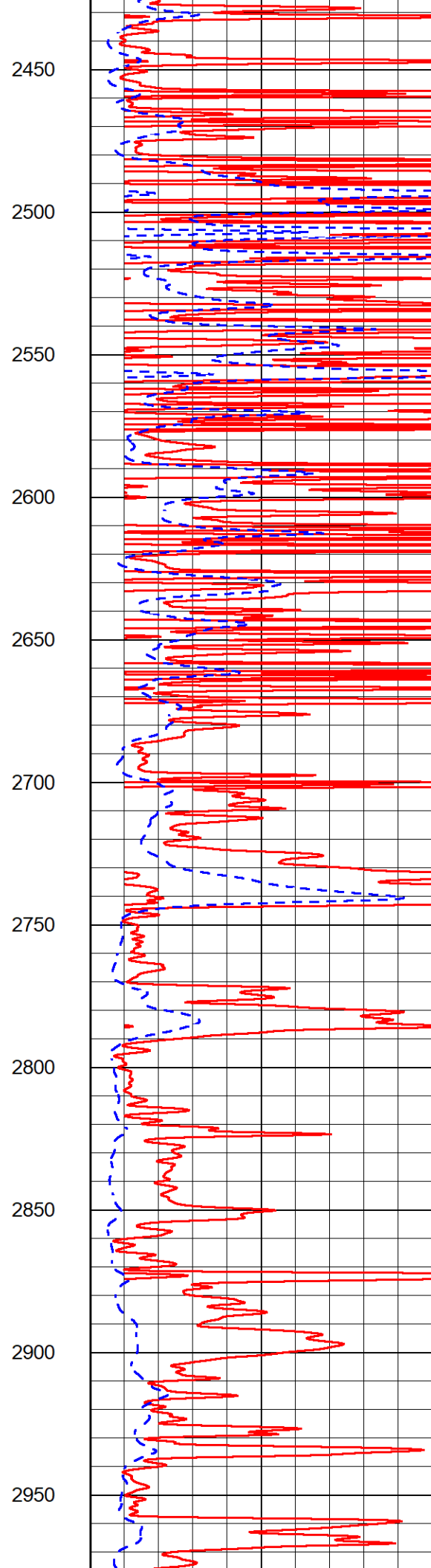
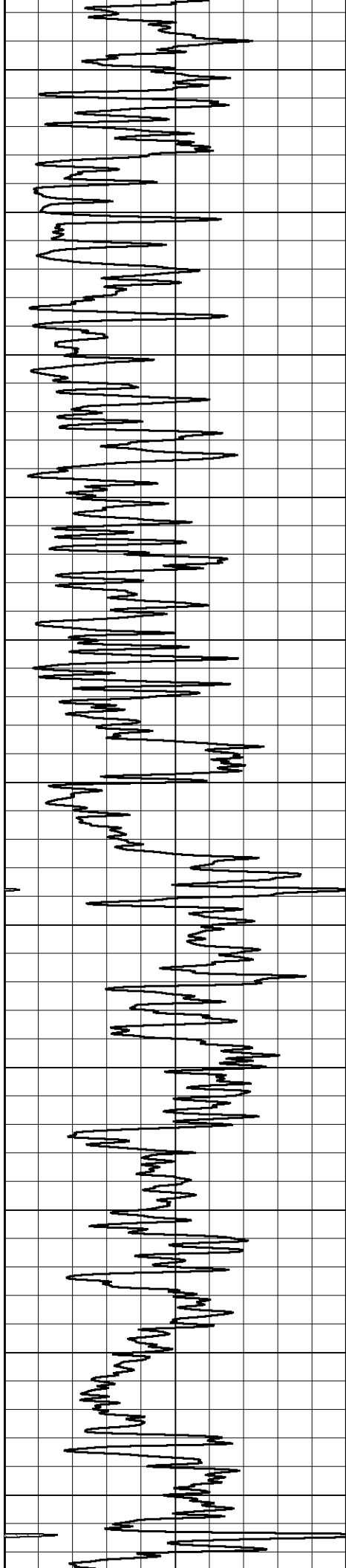
MAIN PASS

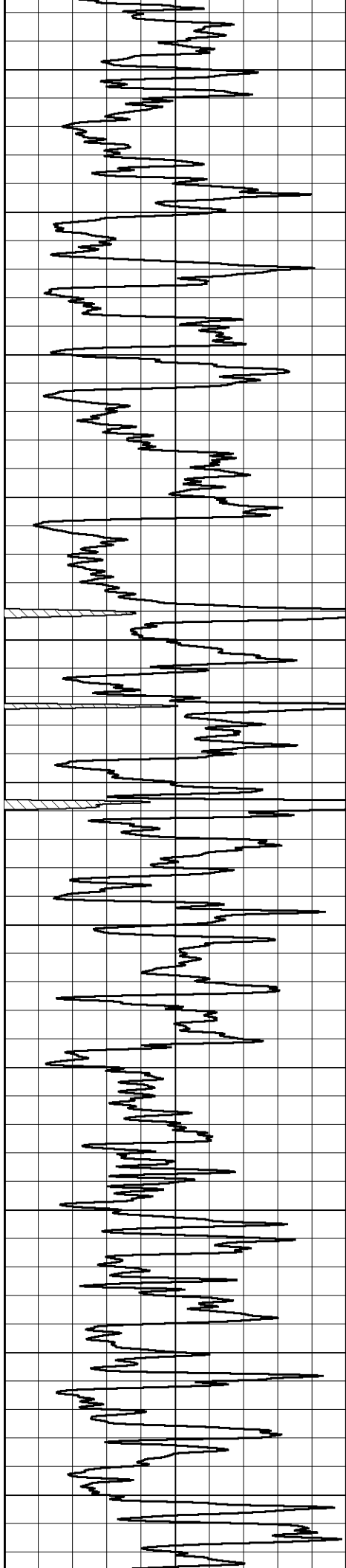
Database File palmer_holloway_6_2.db
 Dataset Pathname stack/pass6.1
 Presentation Format _dil2in
 Dataset Creation Mon Nov 29 00:15:12 2021
 Charted by Depth in Feet scaled 1:600

0	Gamma Ray (GAPI)	150	1000	Conductivity (mmho/m)	0
			15000	Line Tension (lb)	0
			0	Shallow Resistivity (Ohm-m)	50
			0	Deep Resistivity (Ohm-m)	50
				Shallow Resistivity	
			50	(Ohm-m)	200
			50	Deep Resistivity (Ohm-m)	200









3000

3050

3100

3150

3200

3250

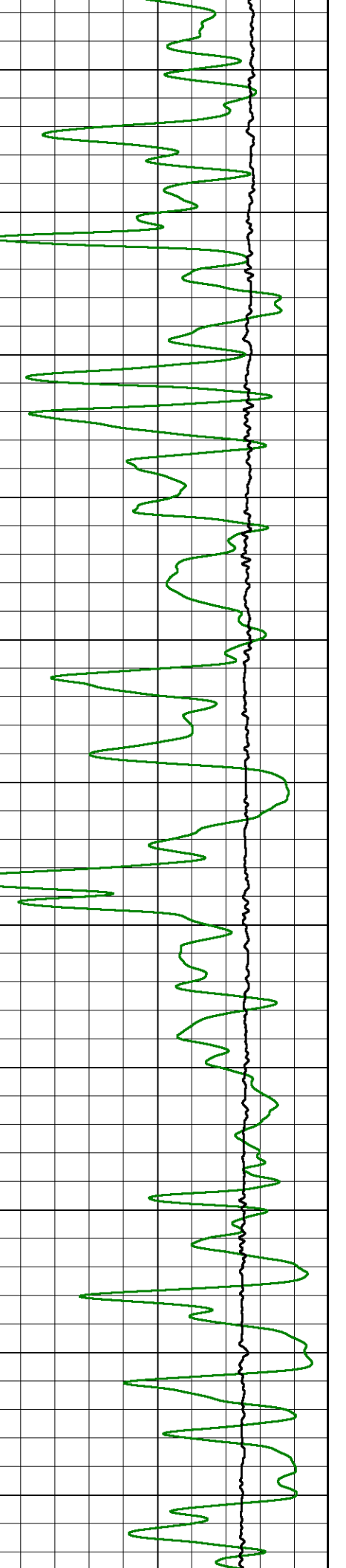
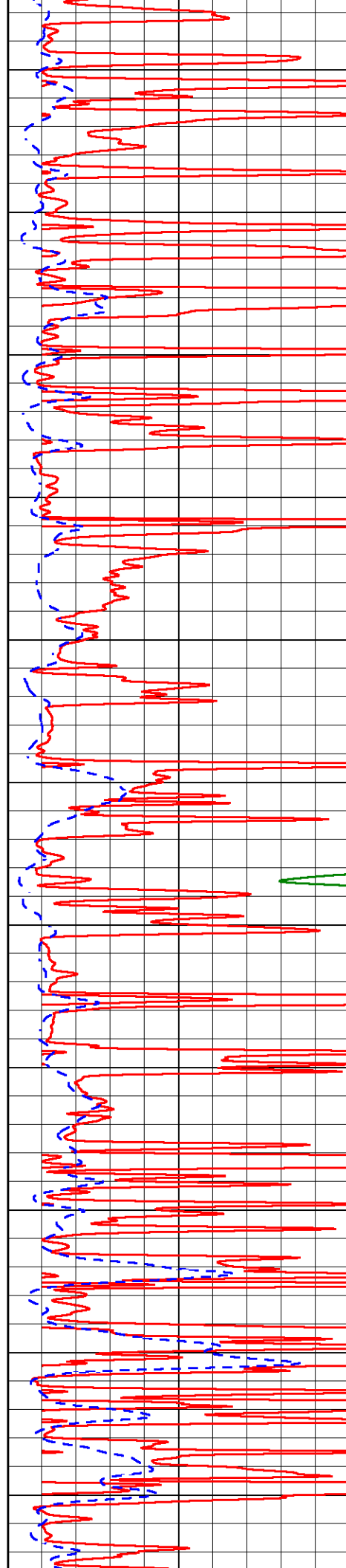
3300

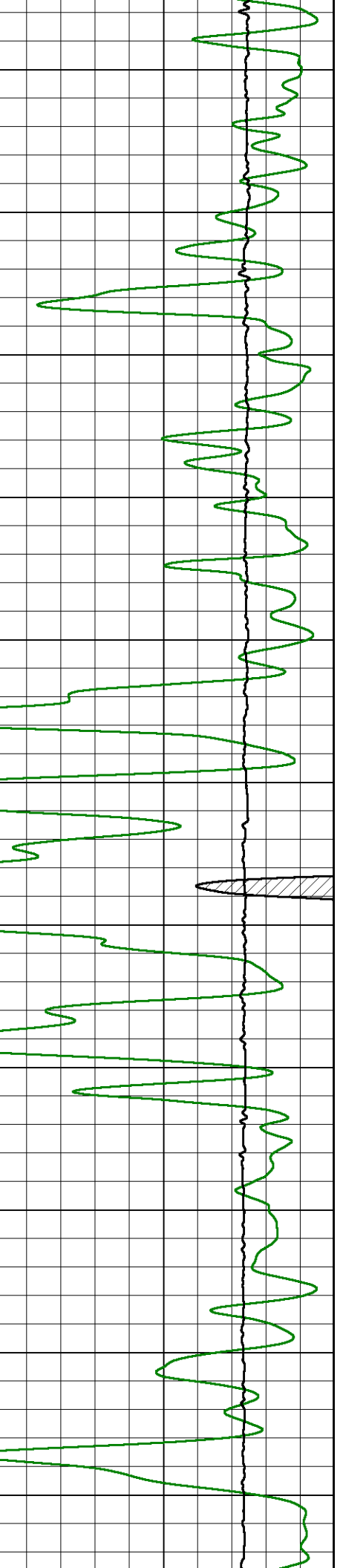
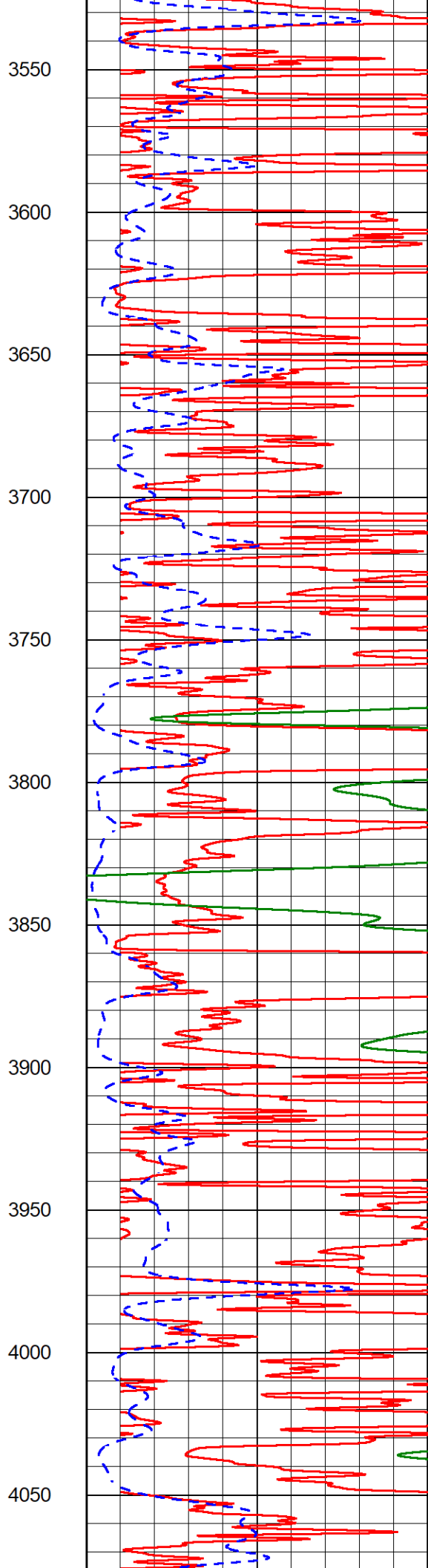
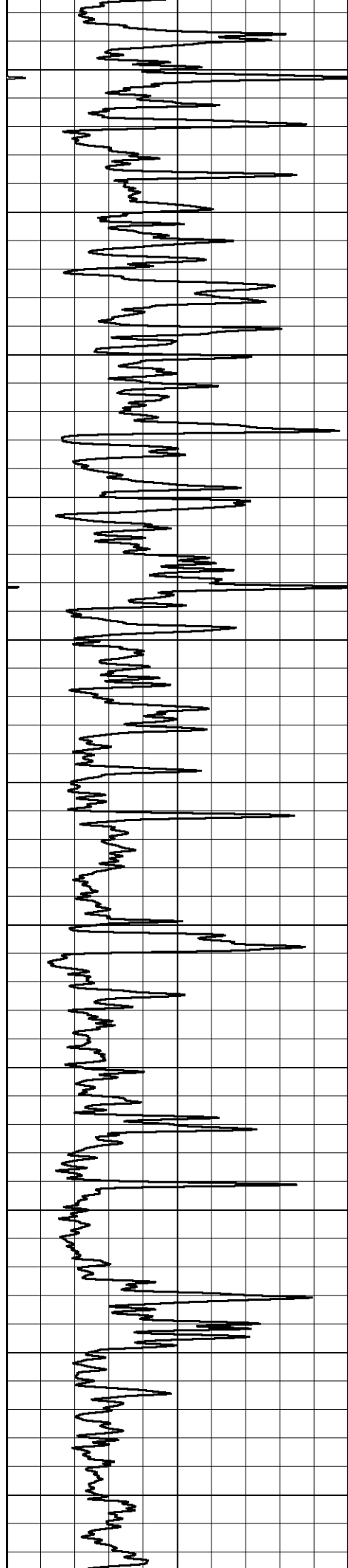
3350

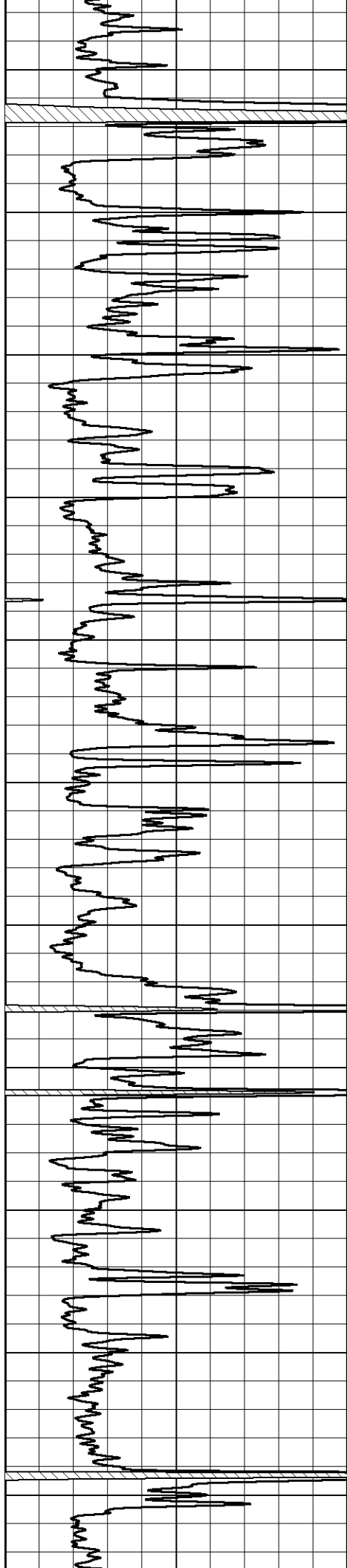
3400

3450

3500







4100

4150

4200

4250

4300

4350

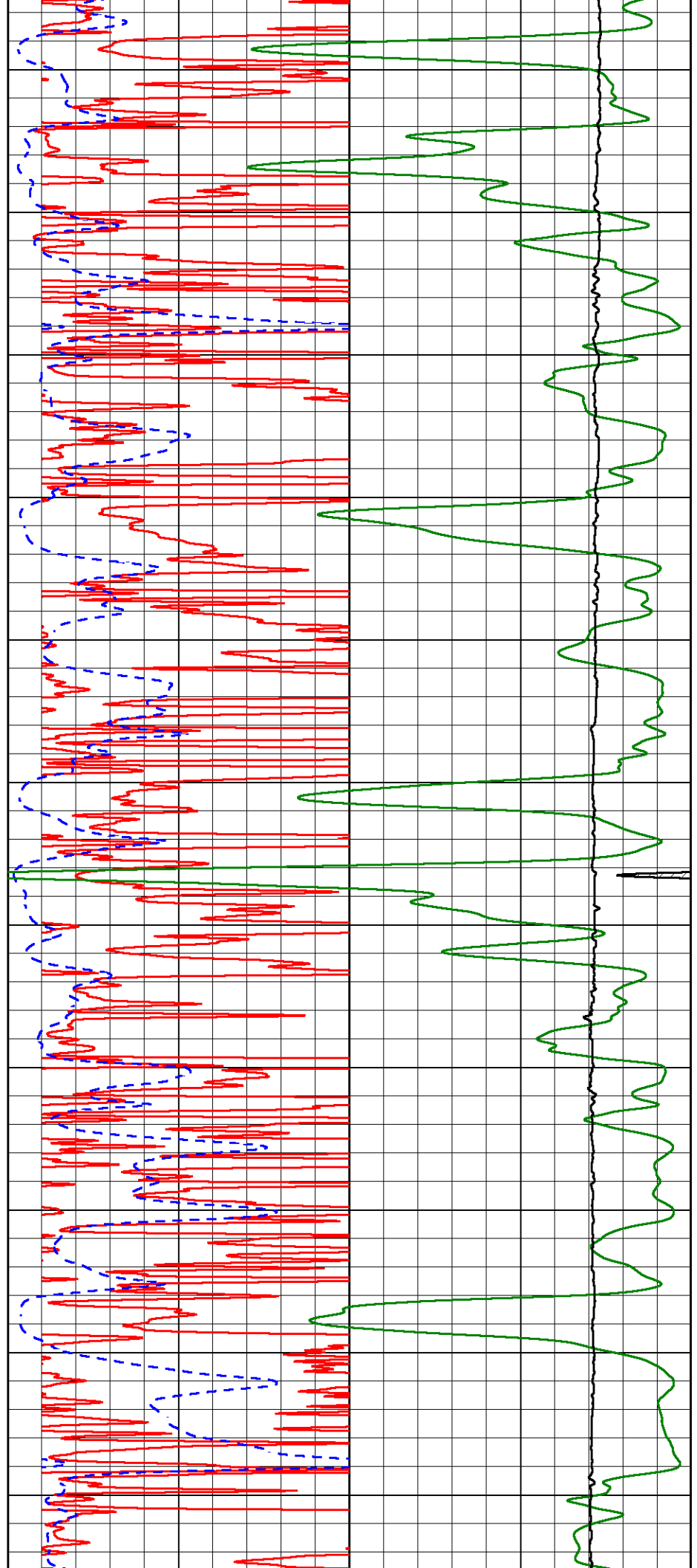
4400

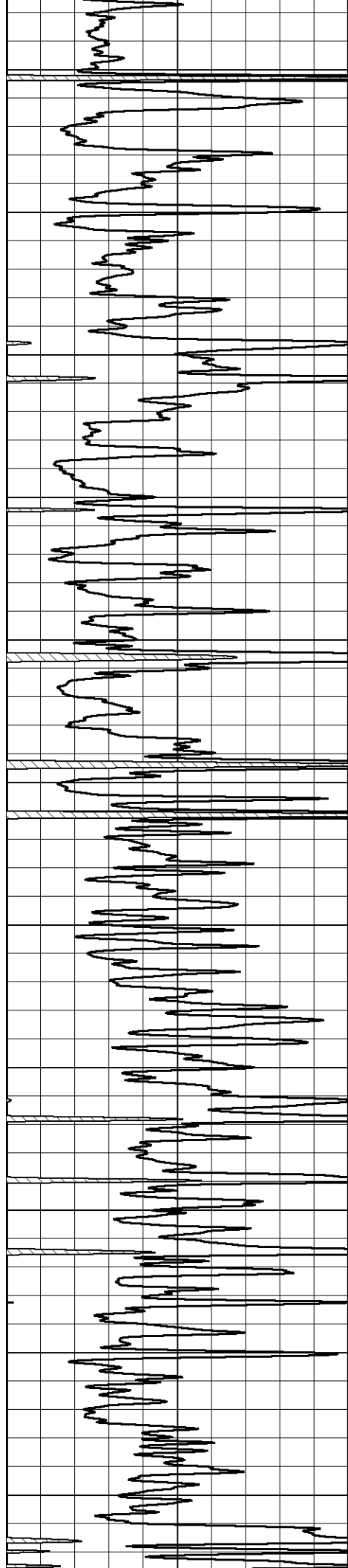
4450

4500

4550

4600





4650

4700

4750

4800

4850

4900

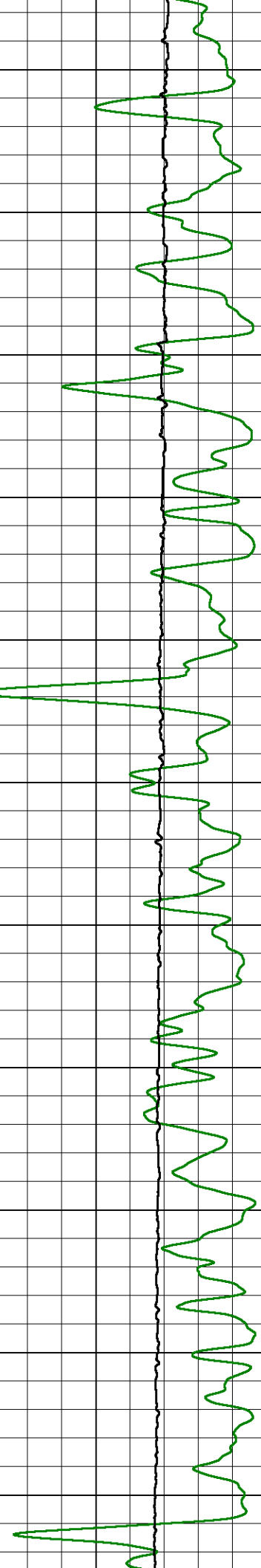
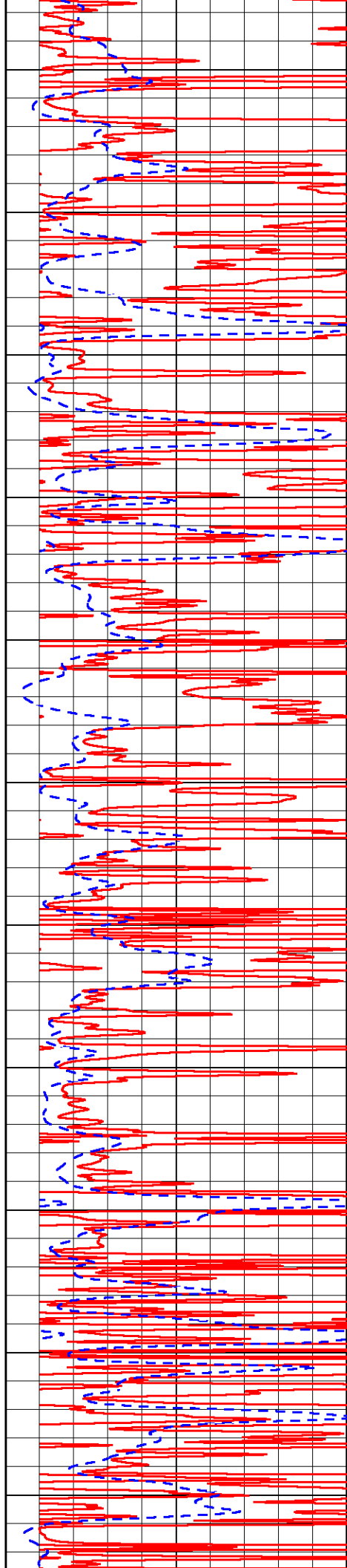
4950

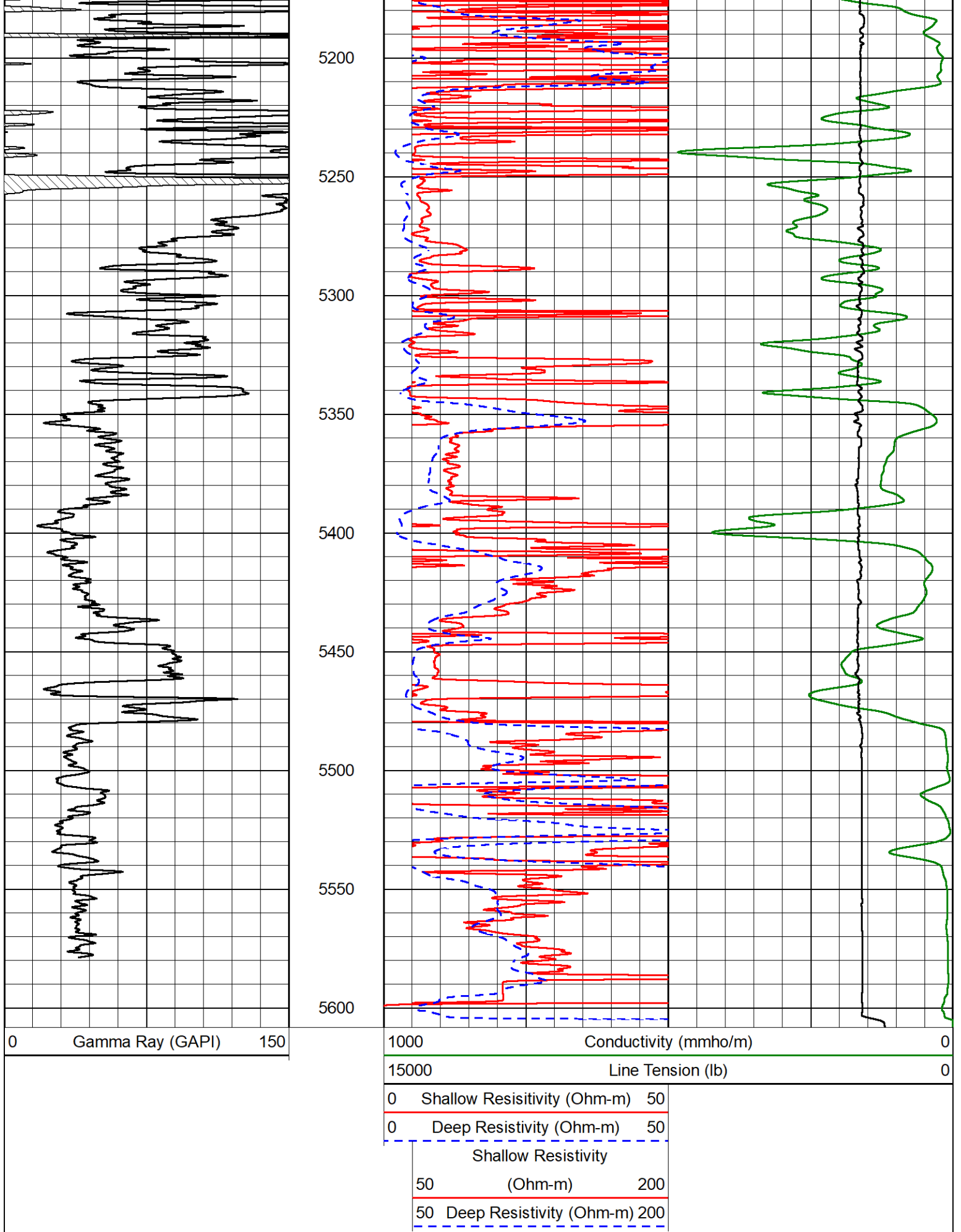
5000

5050

5100

5150





ANHYDRITE SECTION



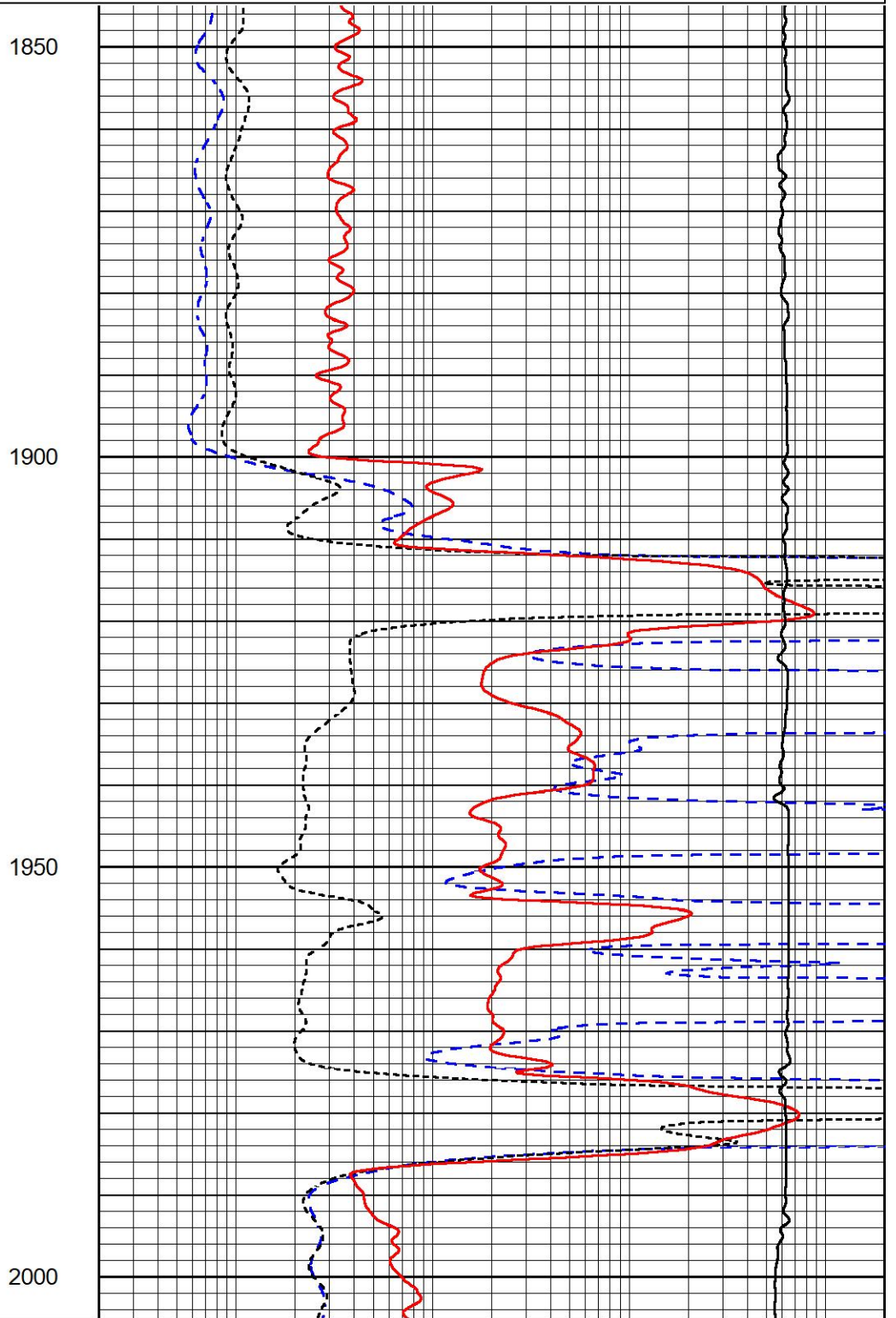
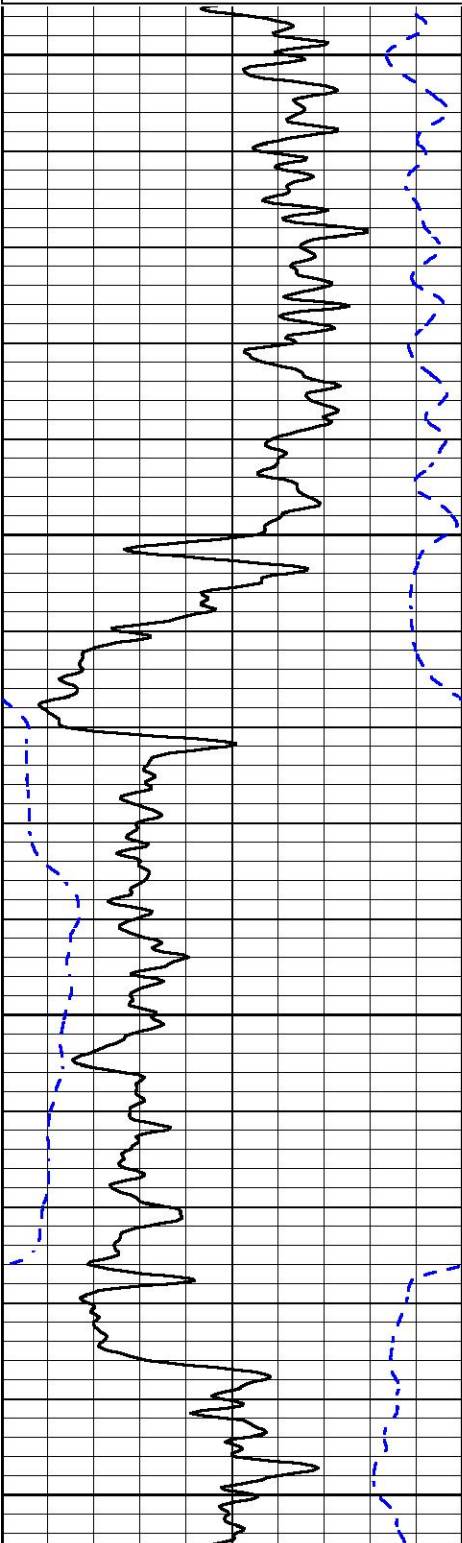


MAIN PASS

Database File palmer_holloway_6_2.db
 Dataset Pathname stack/pass5.1
 Presentation Format _dil
 Dataset Creation Mon Nov 29 00:10:24 2021
 Charted by Depth in Feet scaled 1:240

0	Gamma Ray (GAPI)	150
-200	SP (mV)	0

0.2	Deep Resistivity (Ohm-m)	2000
0.2	Medium Resistivity (Ohm-m)	2000
0.2	Shallow Resistivity (Ohm-m)	2000
10000	Line Tension (lb)	0



-200	SP (mV)	0
------	---------	---

0.2	Medium Resistivity (Ohm-m)	2000
0.2	Shallow Resistivity (Ohm-m)	2000
10000	Line Tension (lb)	0



MIDWEST WIRELINE

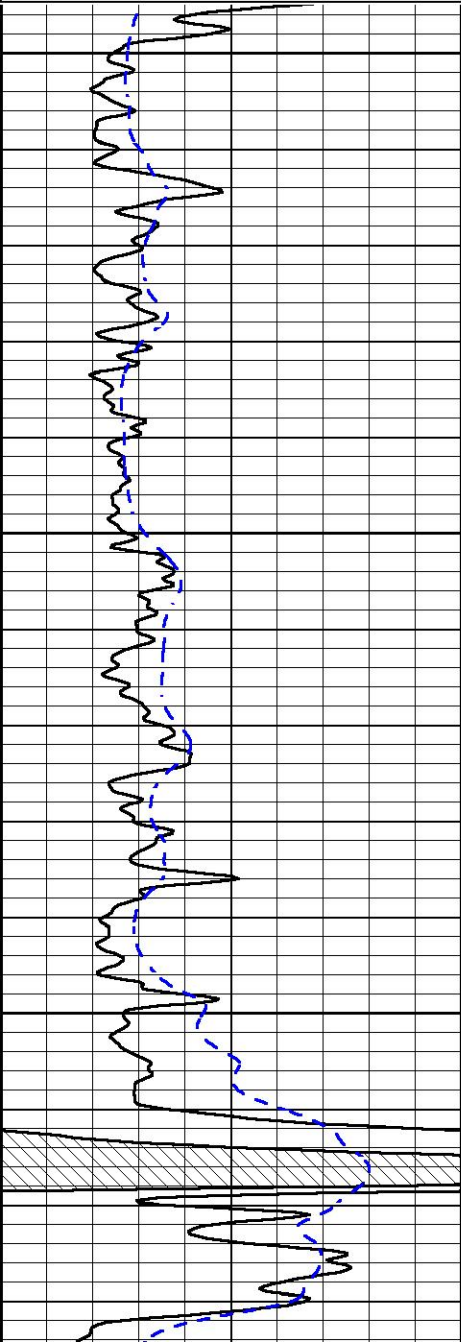
DETAIL SECTION

MAIN PASS

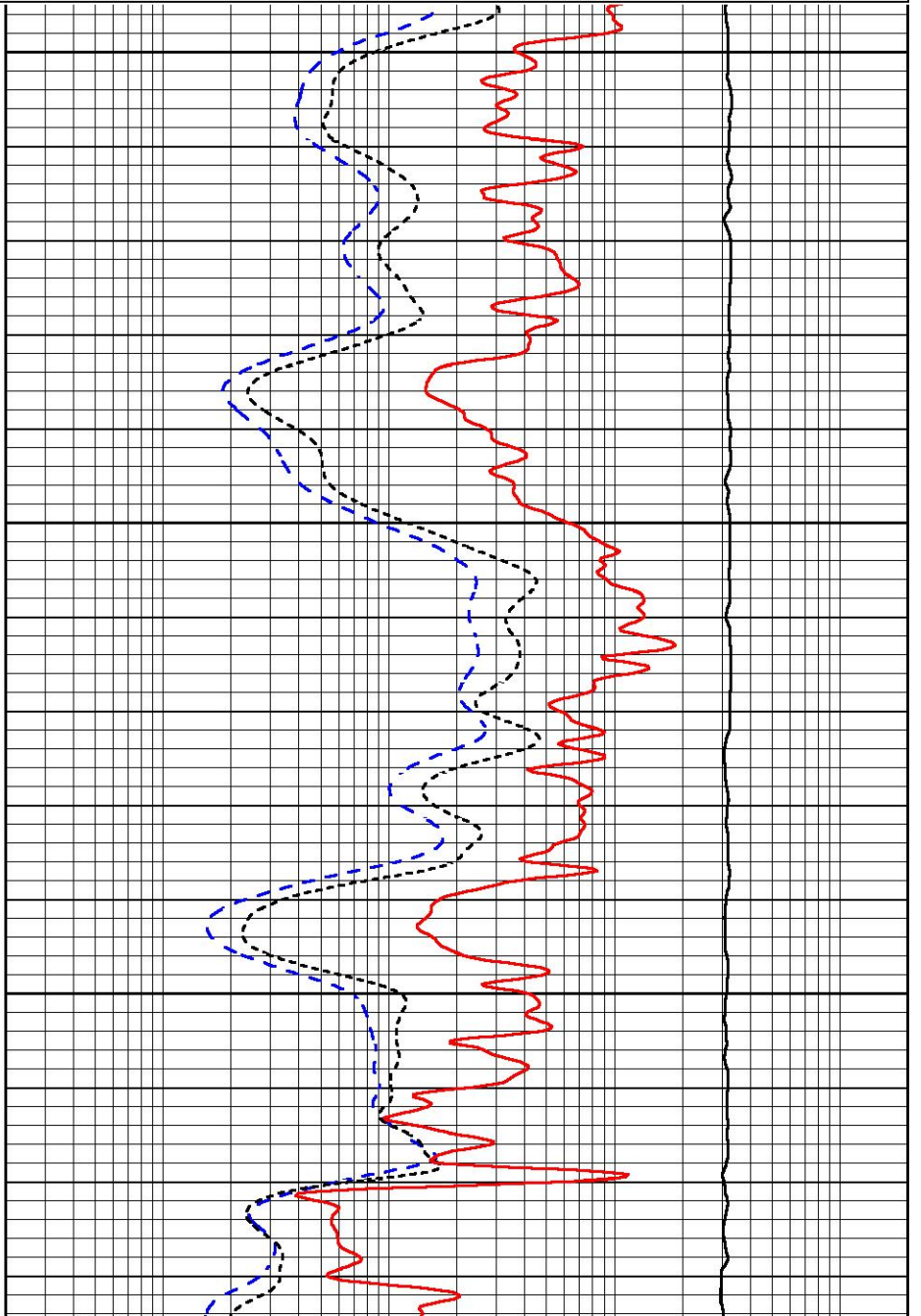
Database File palmer_holloway_6_2.db
 Dataset Pathname stack/pass4.1
 Presentation Format _dil
 Dataset Creation Sun Nov 28 23:42:46 2021
 Charted by Depth in Feet scaled 1:240

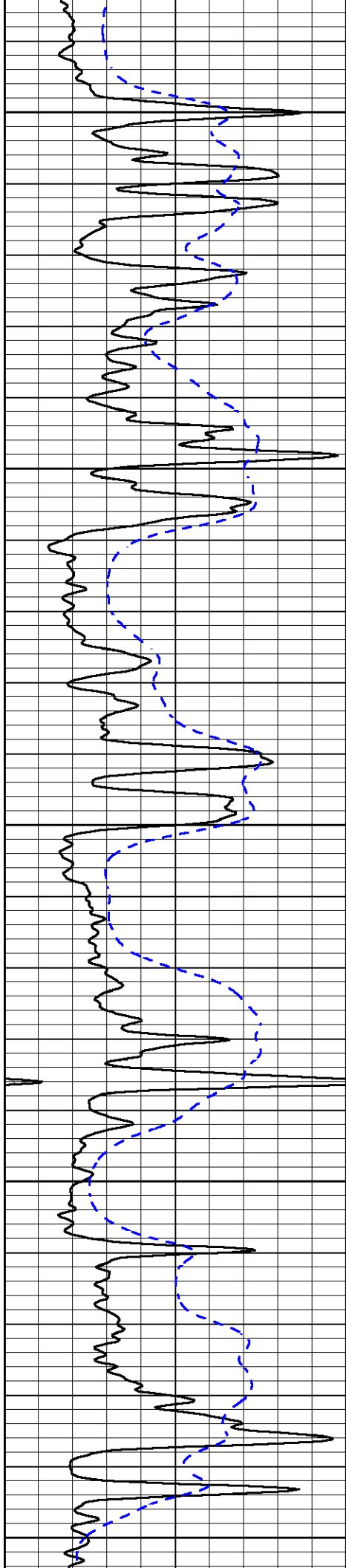
0	Gamma Ray (GAPI)	150
-200	SP (mV)	0

0.2	Deep Resistivity (Ohm-m)	2000
0.2	Medium Resistivity (Ohm-m)	2000
0.2	Shallow Resistivity (Ohm-m)	2000
10000	Line Tension (lb)	0



4000
4050
4100





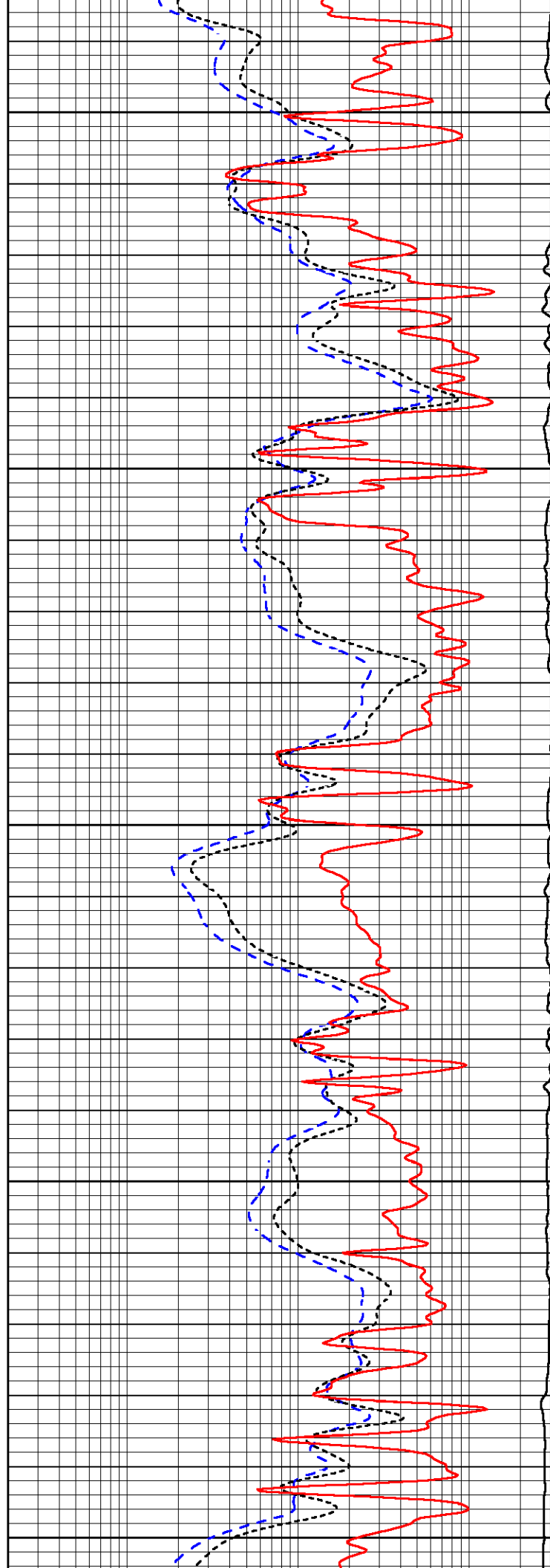
4150

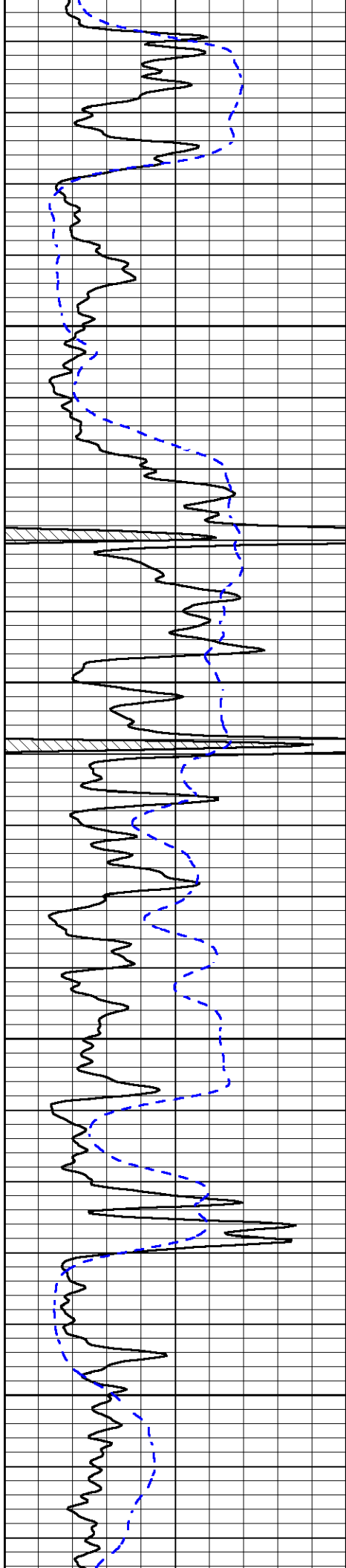
4200

4250

4300

4350



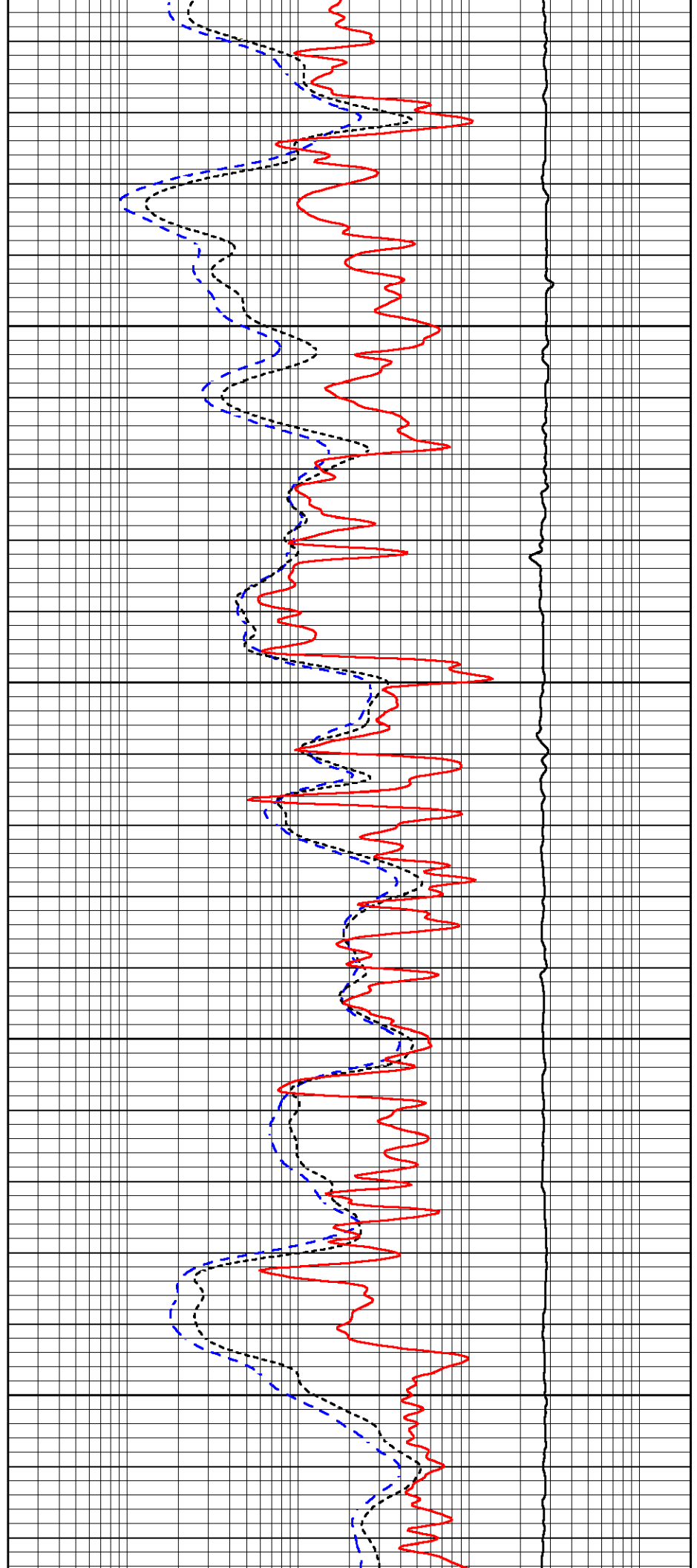


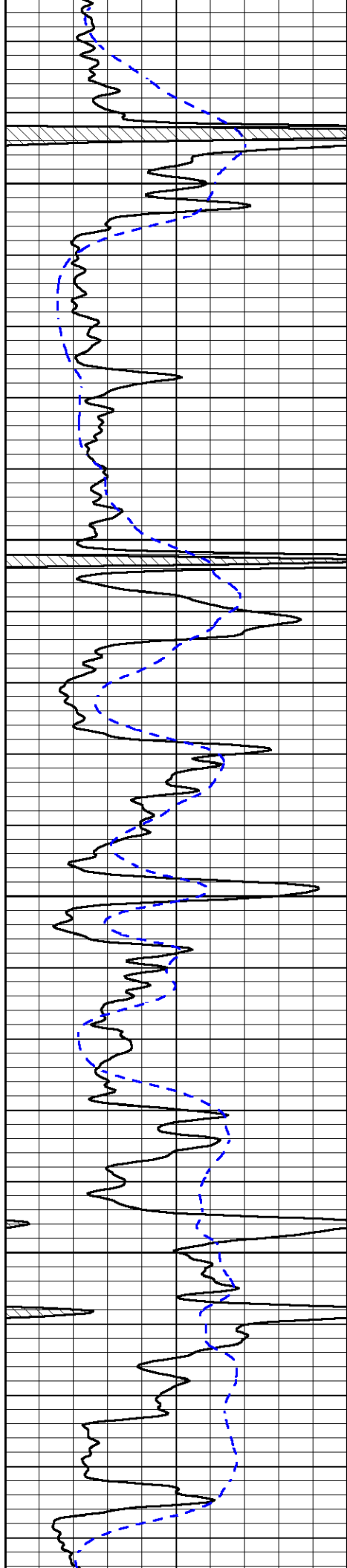
4400

4450

4500

4550



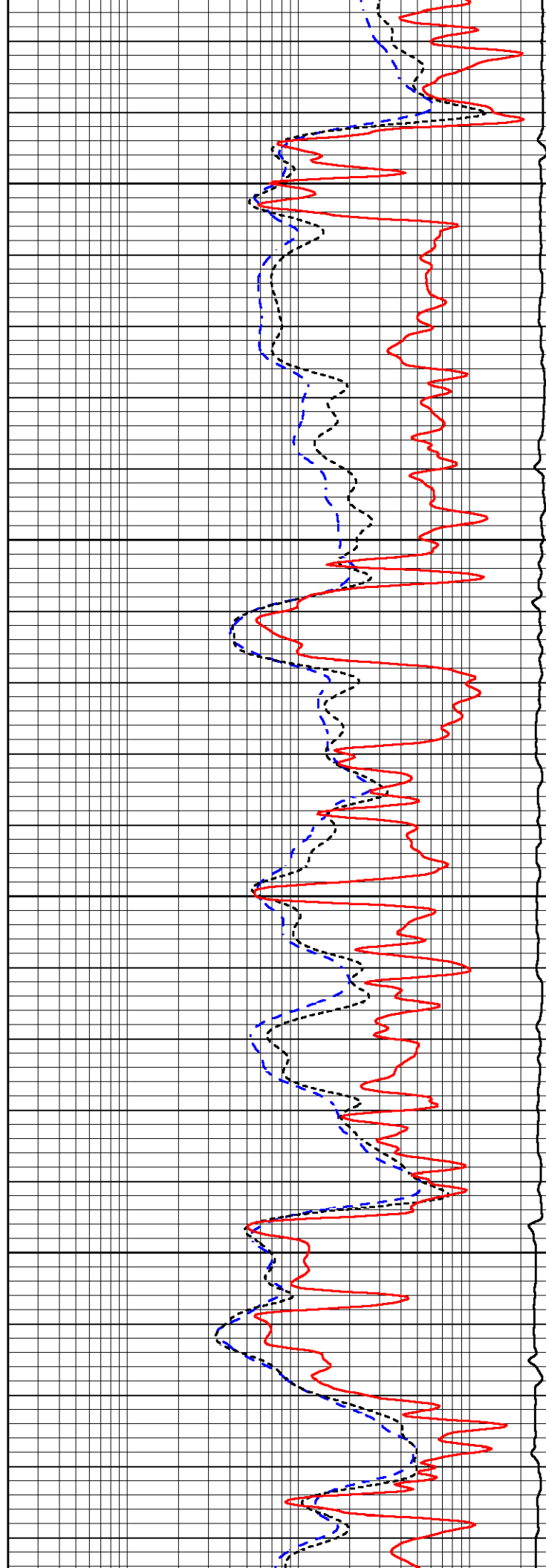


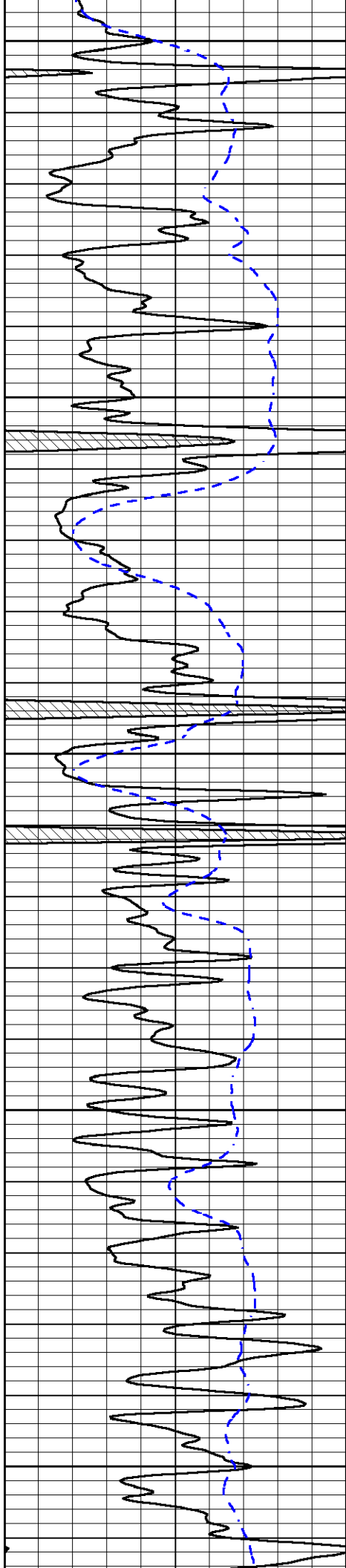
4600

4650

4700

4750





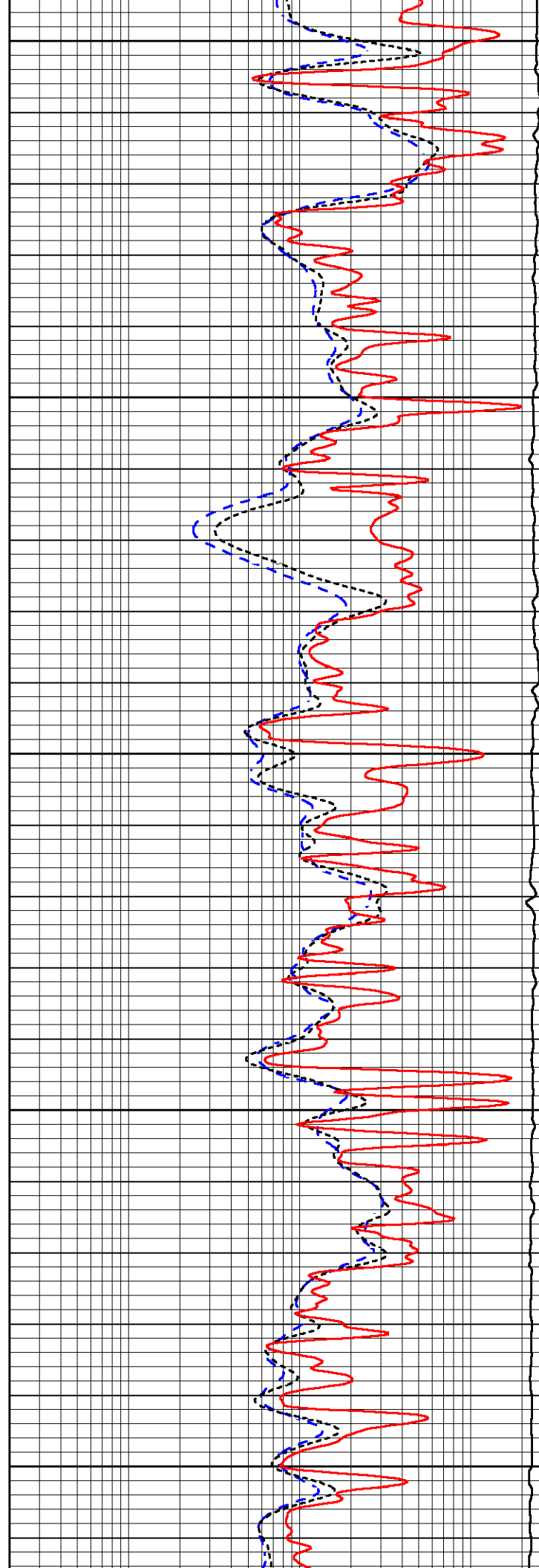
4800

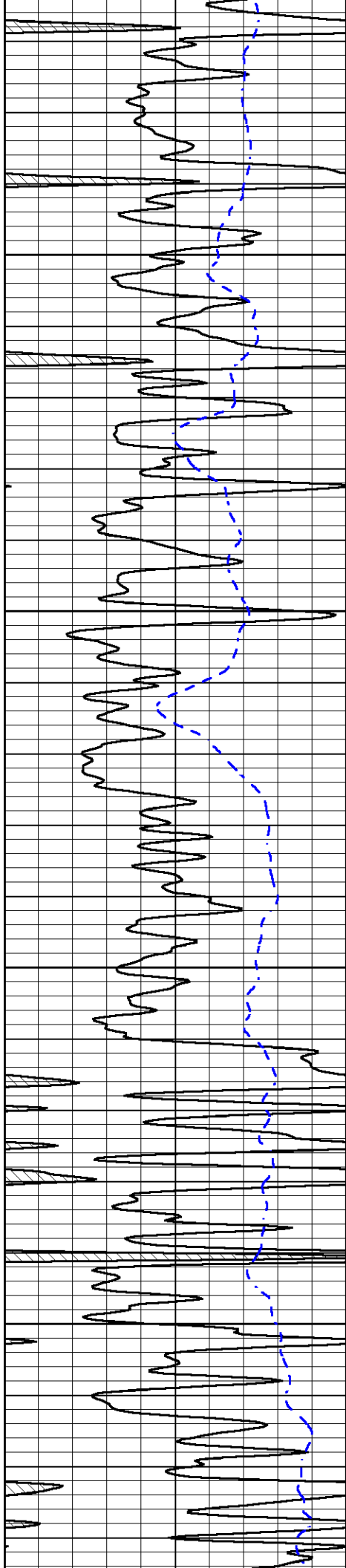
4850

4900

4950

5000



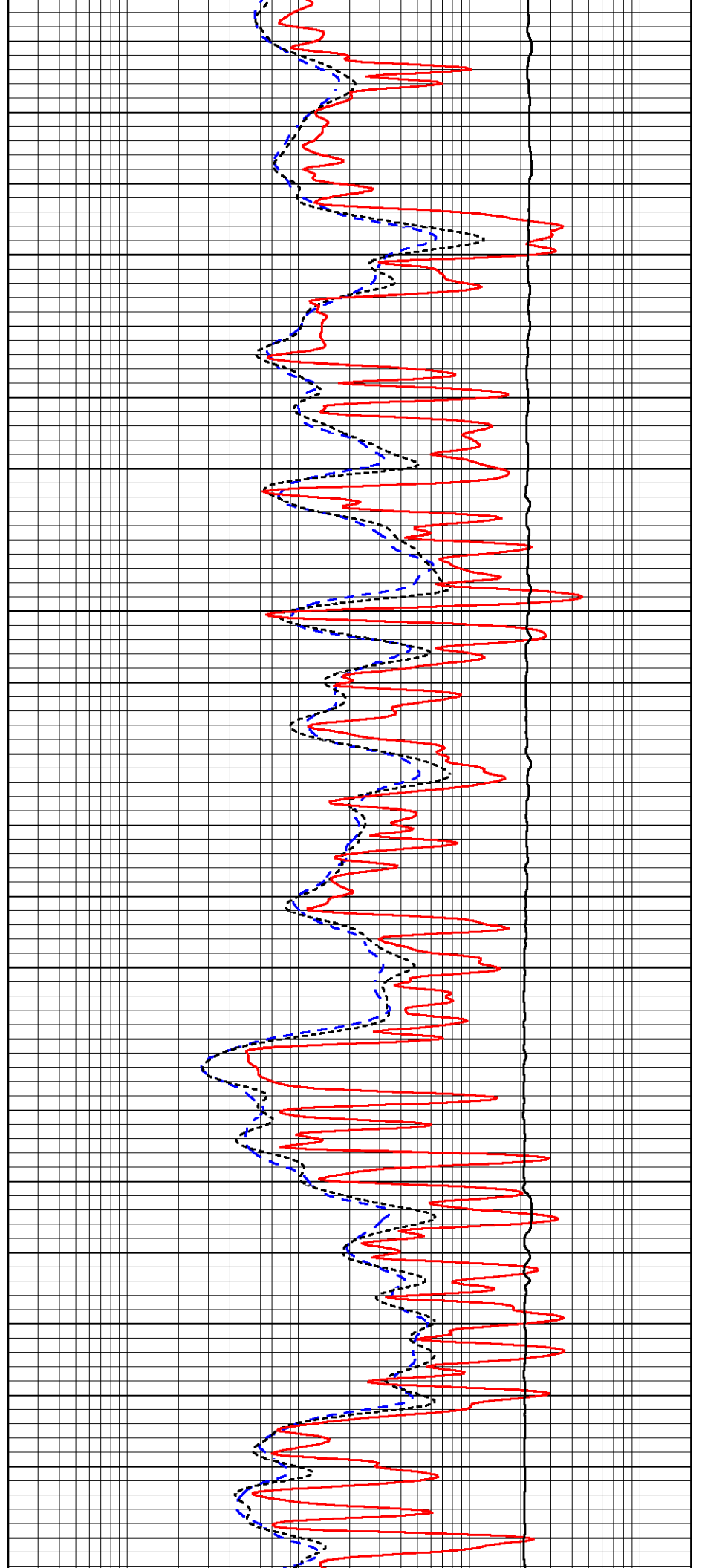


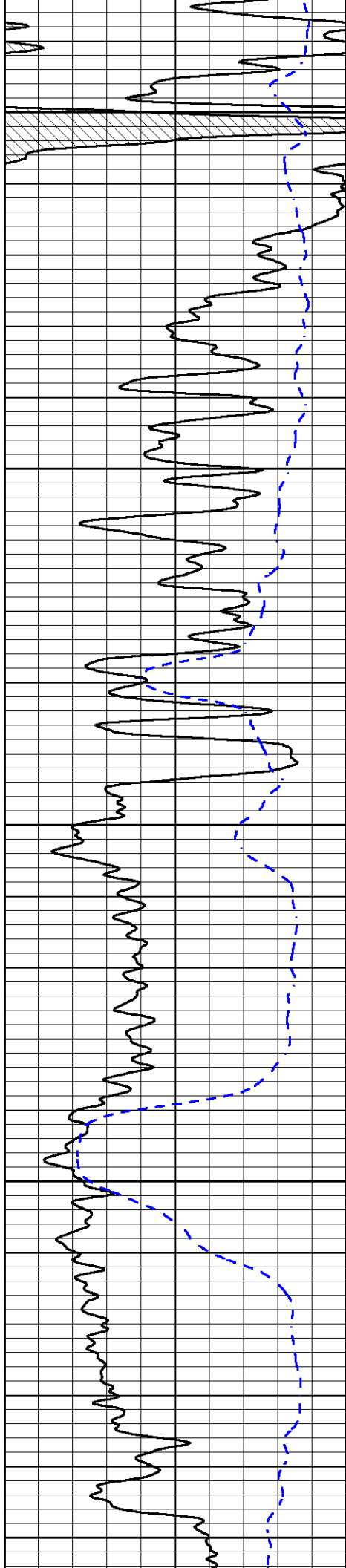
5050

5100

5150

5200





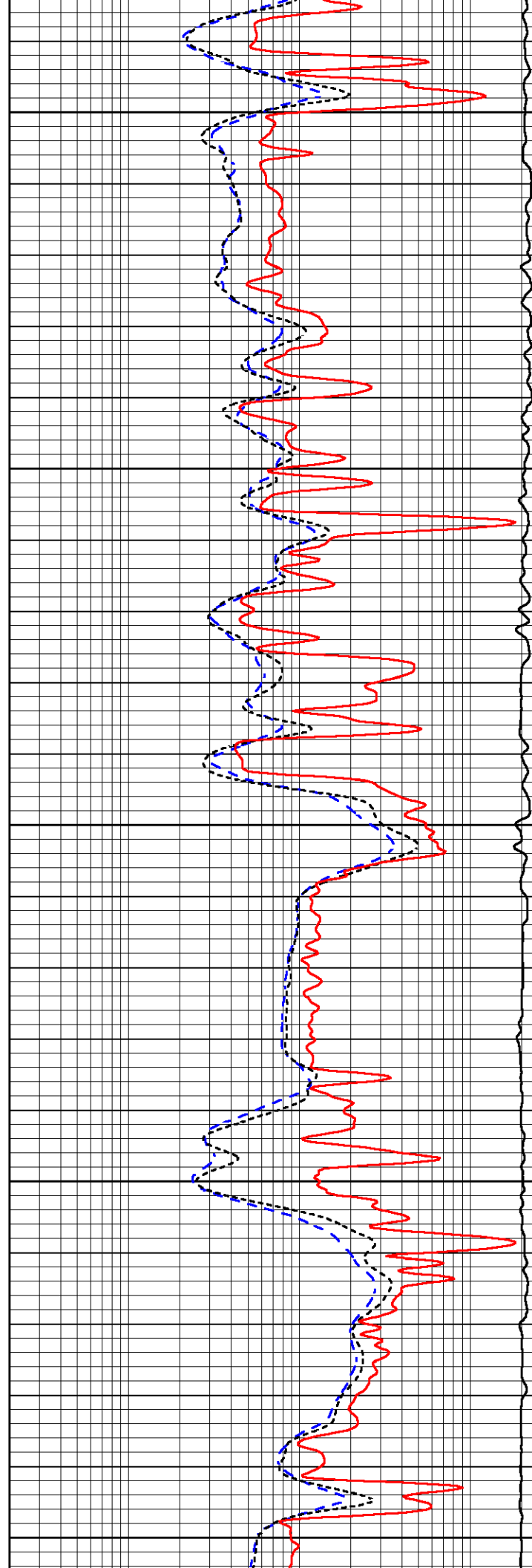
5250

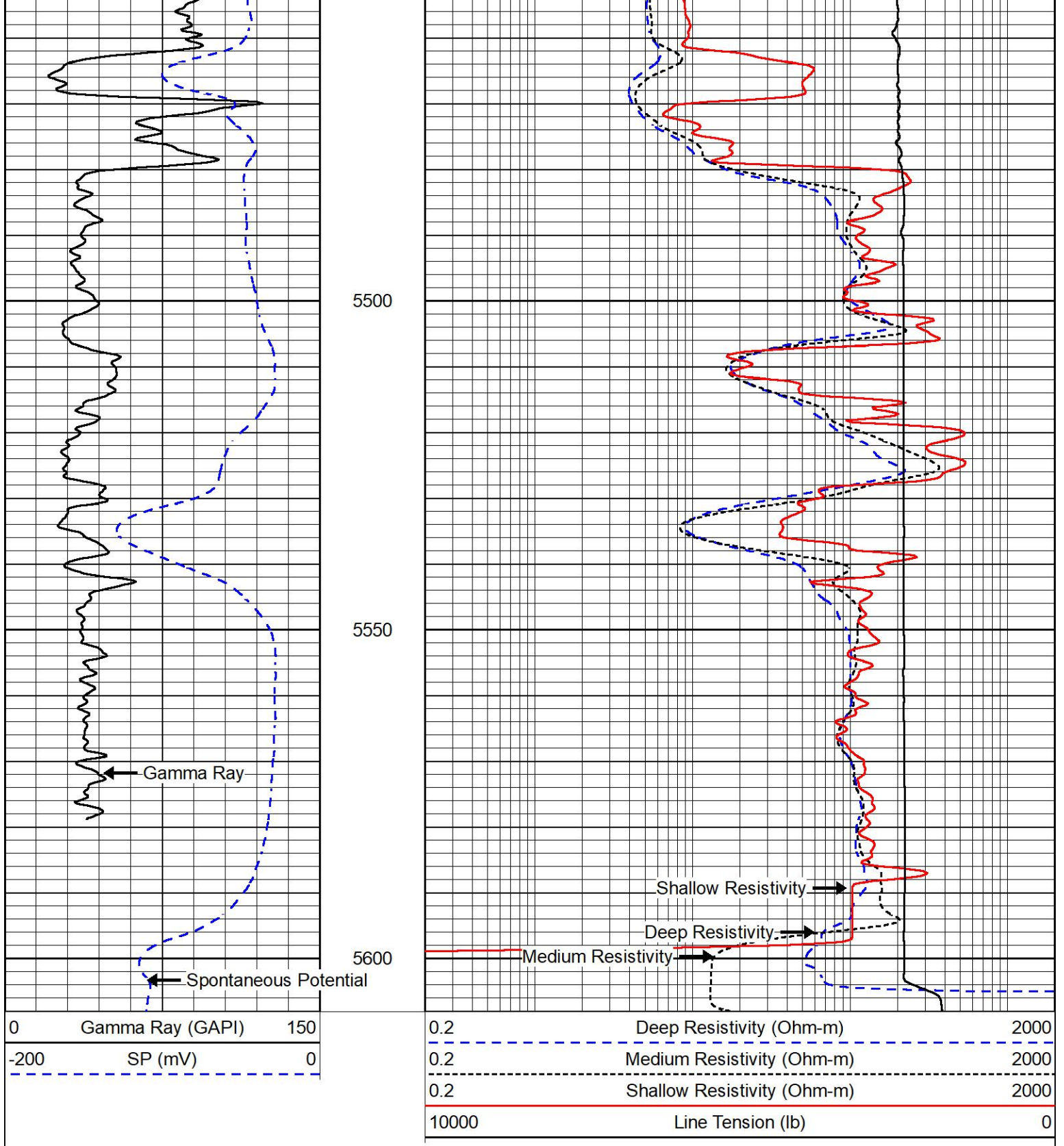
5300

5350

5400

5450





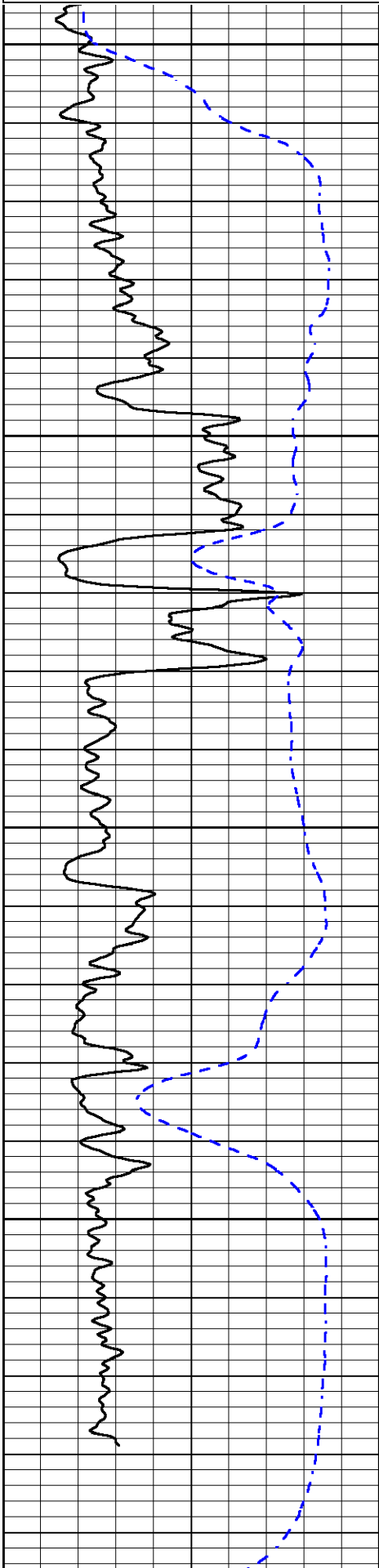
REPEAT SECTION

REPEAT PASS

Database File palmer_holloway_6_2.db
 Dataset Pathname stack/pass2.1
 Presentation Format _dil
 Dataset Creation Sun Nov 28 23:41:51 2021
 Charted by Depth in Feet scaled 1:240

0	Gamma Ray (GAPI)	150
-200	SP (mV)	0

0.2	Deep Resistivity (Ohm-m)	2000
0.2	Medium Resistivity (Ohm-m)	2000
0.2	Shallow Resistivity (Ohm-m)	2000
10000	Line Tension (lb)	0

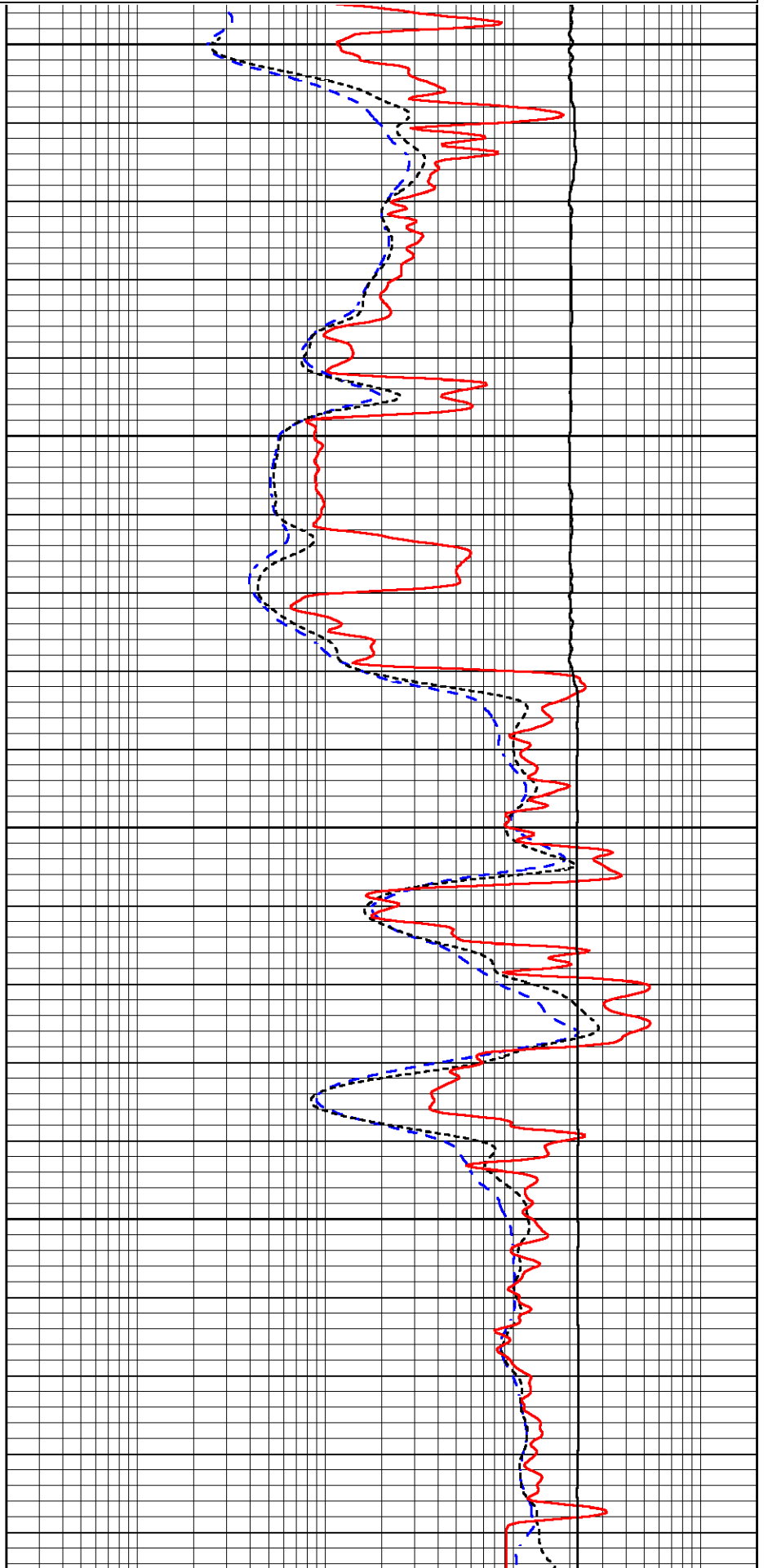


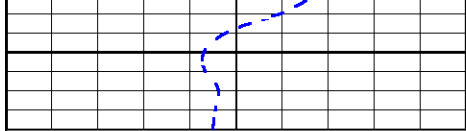
5400

5450

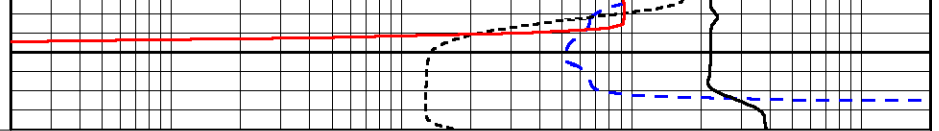
5500

5550





5600



0	Gamma Ray (GAPI)	150
-200	SP (mV)	0

0.2	Deep Resistivity (Ohm-m)	2000
0.2	Medium Resistivity (Ohm-m)	2000
0.2	Shallow Resistivity (Ohm-m)	2000
10000	Line Tension (lb)	0