



MIDWEST WIRELINE

DUAL COMP POROSITY LOG

Company Palmer Oil, Inc.
 Well Holloway #6-2
 Field Wildcat
 County Haskell
 State Kansas

Location: API #: 15-081-22238-00-00
 2581 FNL & 1452 FWL
 SEC 6 TWP 28S RGE 33W
 Permanent Datum Ground Level Elevation 3034
 Log Measured From Kelly Bushing
 Drilling Measured From Kelly Bushing
 Other Services
 DIL
 MEL/BHCS
 K.B. 3047
 D.F.
 G.L. 3034

Date 11/28/2021
 Run Number One
 Type Log CNL/CDL
 Depth Driller 5600
 Depth Logger 5604
 Bottom Logged Interval 5583
 Top Logged Interval 4000
 Type Fluid In Hole Chemical
 Salinity, PPM CL 1100
 Density 9.3
 Level Full
 Max. Rec. Temp. F 132
 Operating Rig Time 4 Hours
 Equipment -- Location P-108 HAYS
 Recorded By J. Henrickson
 Witnessed By Kevin Timson

Run No.	Bit	Borehole Record			Casing Record		
		From	To	Size	Wgt.	From	To
One	12.25	0	1654	8.625	24	0	1654
Two	7.875	1654	TD				

<<< Fold Here >>>

All interpretations are opinions based on inferences from electrical or other measurements and Midwest Wireline LLC cannot and does not guarantee the accuracy or correctness of any interpretation, and Midwest Wireline LLC will not be liable or responsible for any loss, costs, damages, or expenses incurred or sustained by anyone resulting from any interpretation made by any of our officers, agents or employees.

Comments

N/A DENOTES NOT AVAILABLE OR NON-APPLICABLE.

Garden City Kansas
 20 South to 50 Rd, West to GG, 2 1/2 South,
 East Into

Log Measured From: Kelly Bushing 13 Ft. Above Permanent Datum

THANK YOU FOR USING MIDWEST WIRELINE LLC
 785-625-3858

Your Midwest Wireline Crew

Engineer: J. Henrickson
 Operator:
 Operator:
 Operator:

This Log Record Was Witnessed By

Primary Witness: Kevin Timson
 Secondary Witness:
 Secondary Witness:
 Secondary Witness:

Log Variables

DatabaseC:\ProgramData\Warrior\Data\palmer_holloway_6_2_2.db
 Dataset field/well/stack/pass4.1/_vars_

Top - Bottom

A	BOREID in	BOTTEMP degF	CASEOD in	CASETHCK in	FLUIDDEN g/cc	M	MATRXDEN g/cc
1	7.875	134	5.5	0	1	2	2.71
NPORSEL	PERFS	SNDERR mmho/m	SNDERRM mmho/m	SPSHIFT mV	SRFTEMP degF	SZCOR	TDEPTH ft
Limestone	0	0	0	505	55	Off	5604

Sensor	Offset (ft)	Schematic	Description	Length (ft)	O.D. (in)	Weight (lb)	
GR	32.75		GR-M&W (89-M&W)	3.00	3.50	50.00	
CNLSC	29.65		CNT-M&W (tk10-MW)	5.00	3.50	100.00	
CNSSC	28.90						
				CDL-M&W (915-956)	8.50	4.00	250.00
LSD	20.60						
DCAL	20.58						
SSD	20.10						
RLL3F	15.50						
RLL3	15.50						
CILD	8.33			DIL-PSI HIGH TEMP (959-1032)	18.25	3.50	220.00

CILM 4.50

SP 0.20

Dataset: palmer_holloway_6_2.db: field/well/stack/pass4.1
 Total length: 34.75 ft
 Total weight: 620.00 lb
 O.D.: 4.00 in



MIDWEST WIRELINE

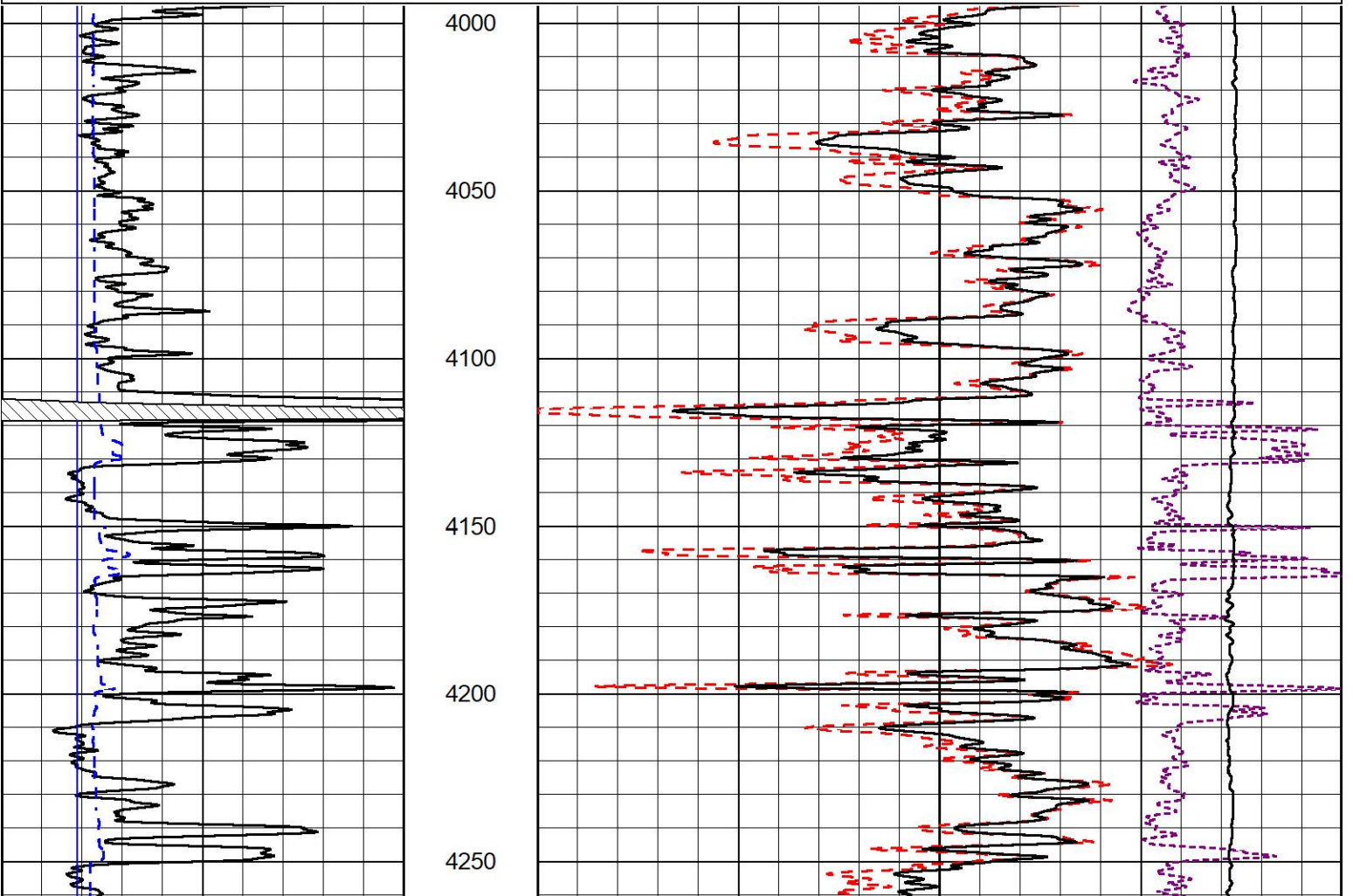
2" SCALE BULK DENSITY

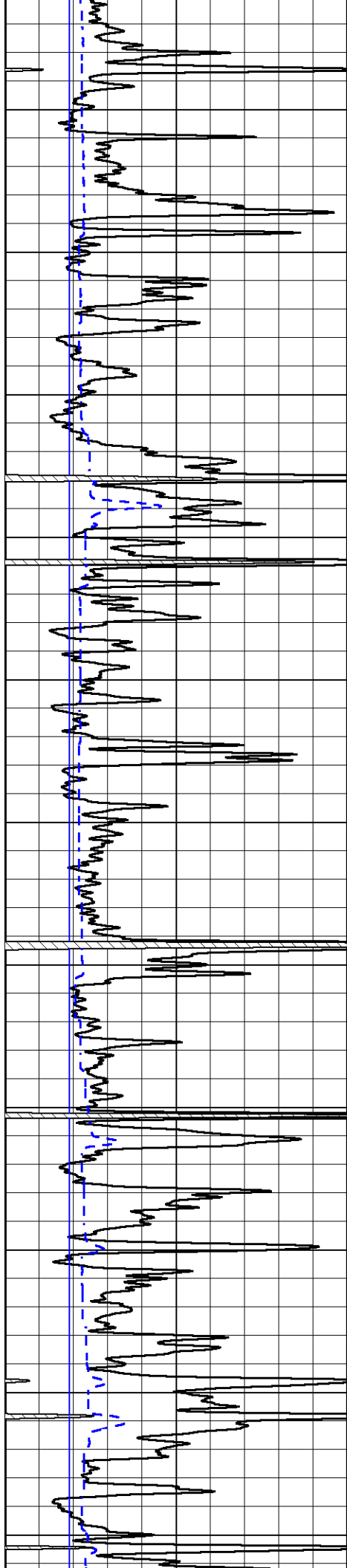
MAIN PASS

Database File palmer_holloway_6_2.db
 Dataset Pathname stack/pass3.1
 Presentation Format _cdl
 Dataset Creation Sun Nov 28 23:41:27 2021
 Charted by Depth in Feet scaled 1:600

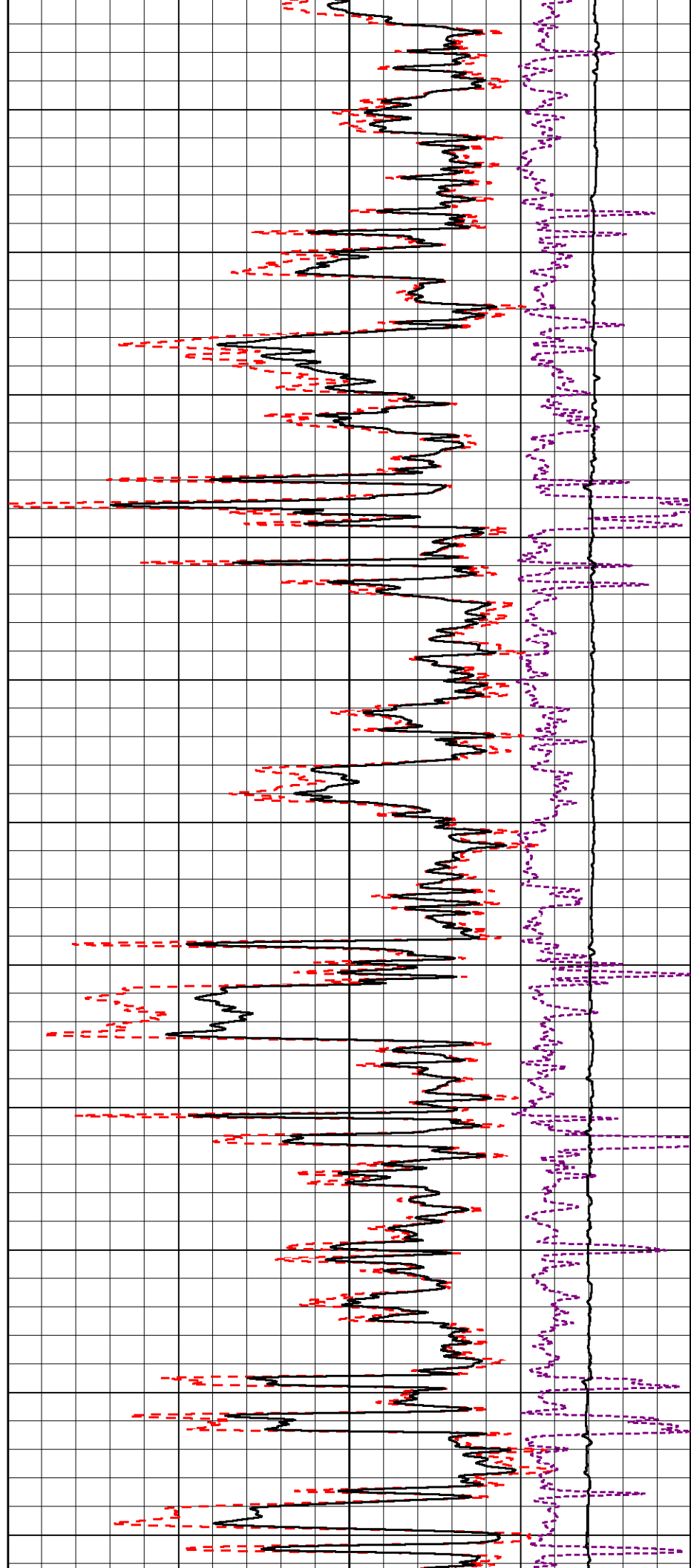
0	Gamma Ray (GAPI)	150
6	Caliper (in)	16

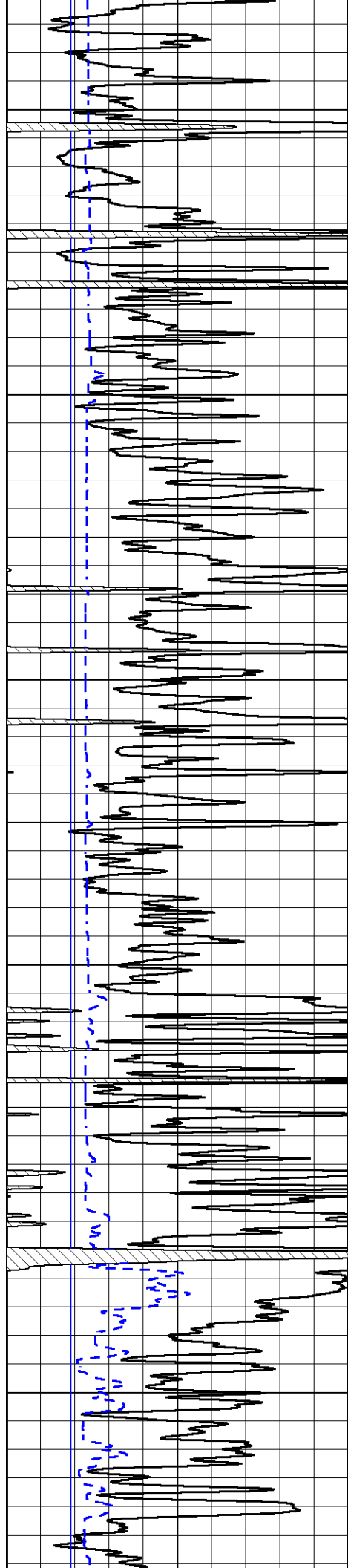
30	Compensated Density (pu)	-10
2	Bulk Density (g/cc)	3
15000	Line Tension (lb)	0
-0.25	Correction (g/cc)	0.25



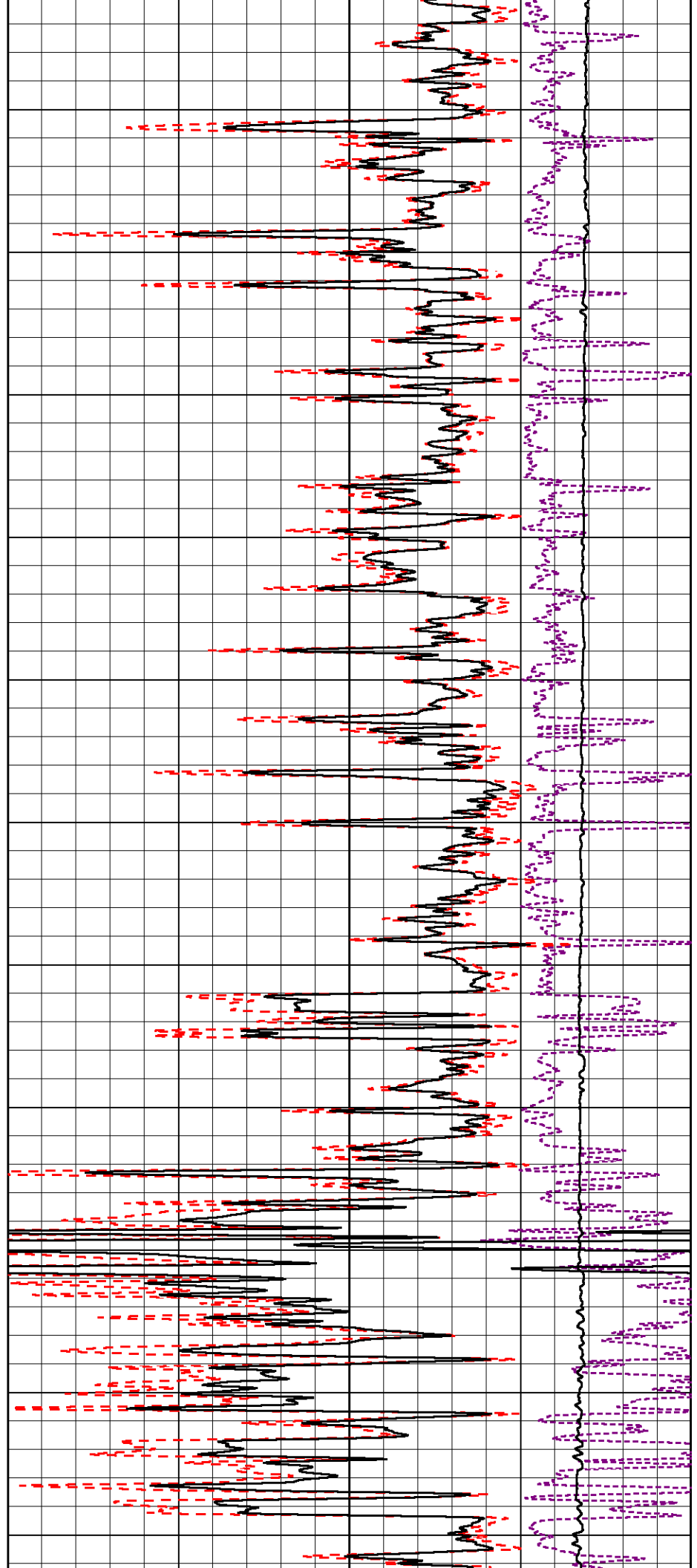


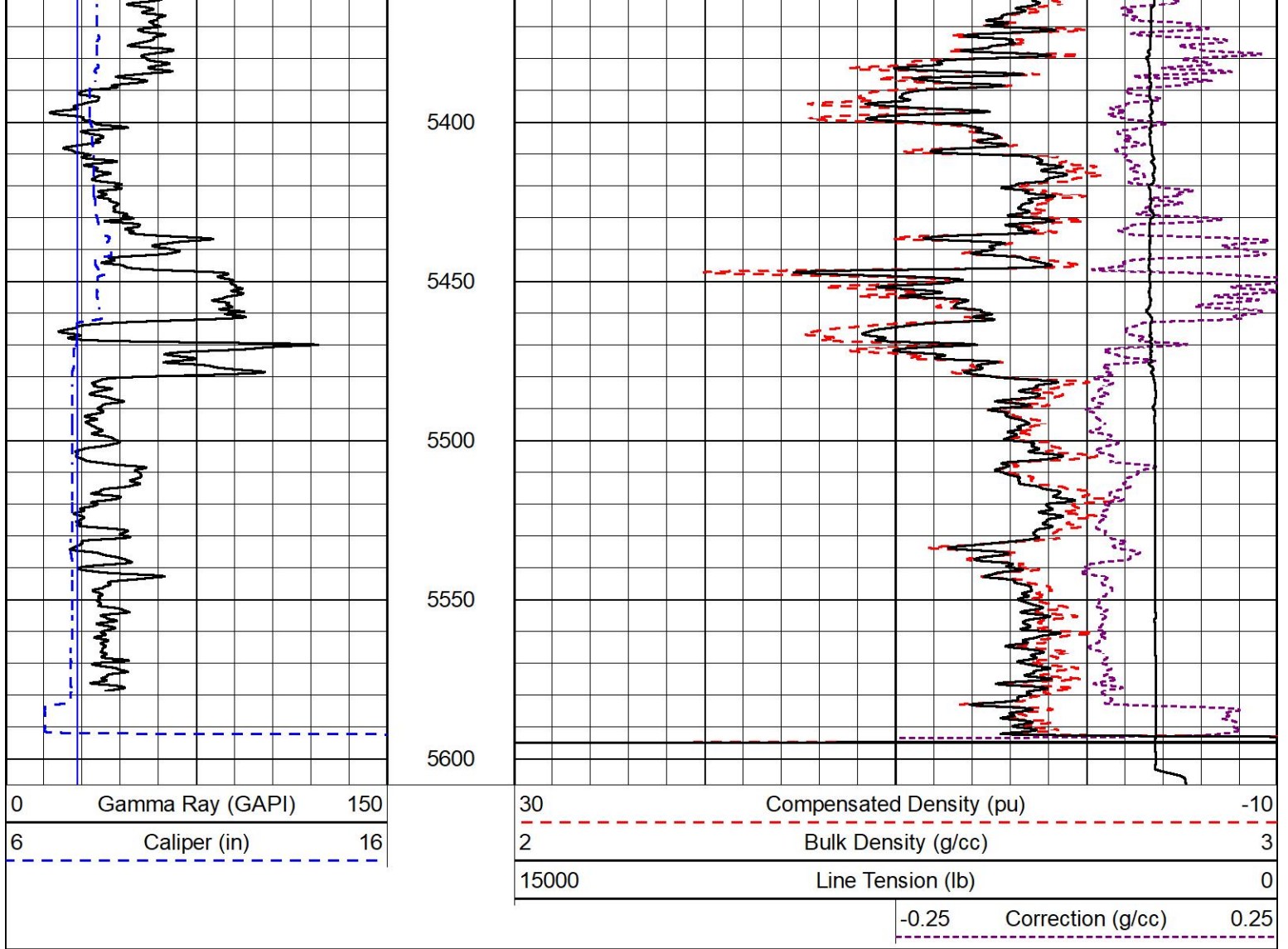
4300
4350
4400
4450
4500
4550
4600
4650
4700
4750
4800





4850
4900
4950
5000
5050
5100
5150
5200
5250
5300
5350

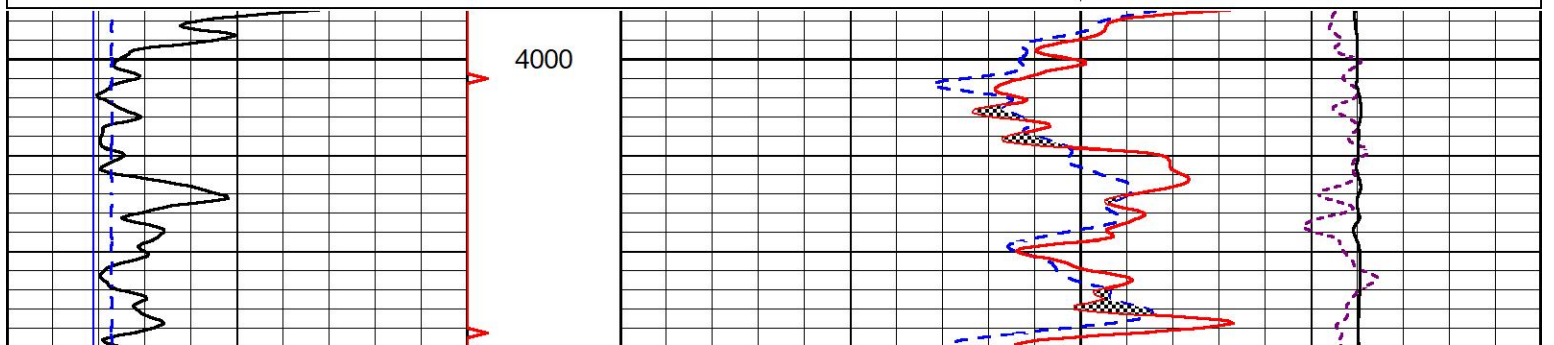
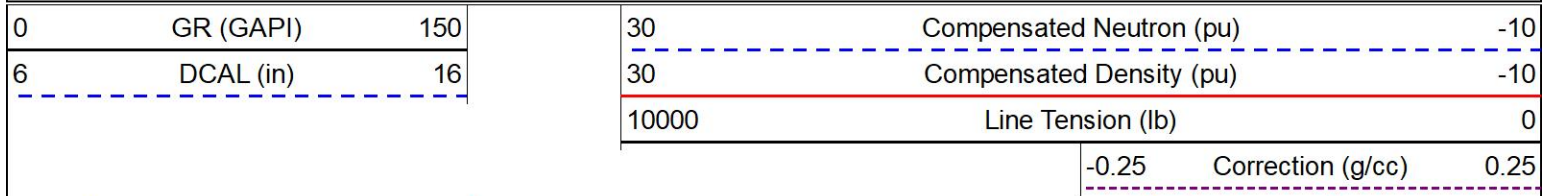


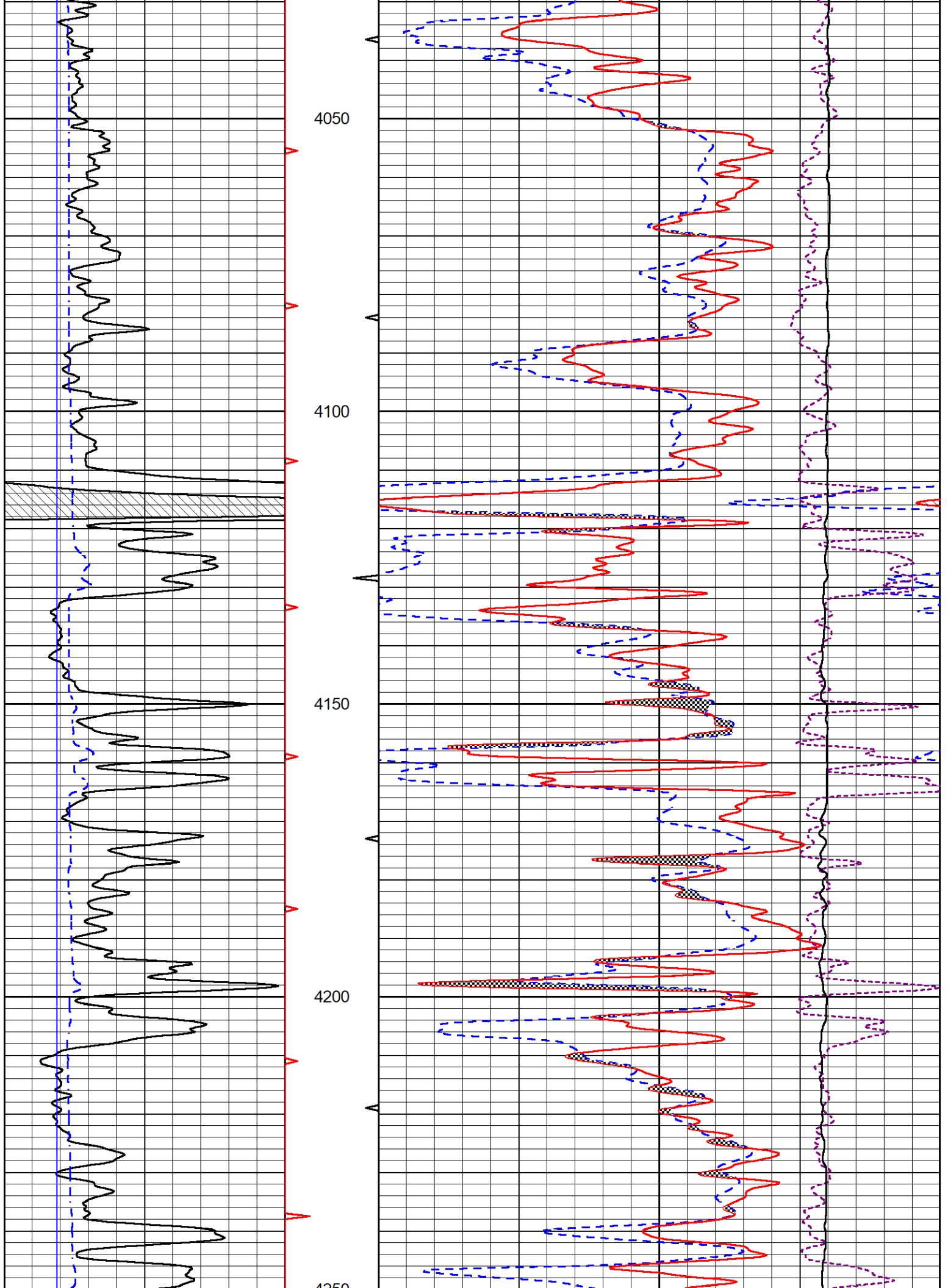


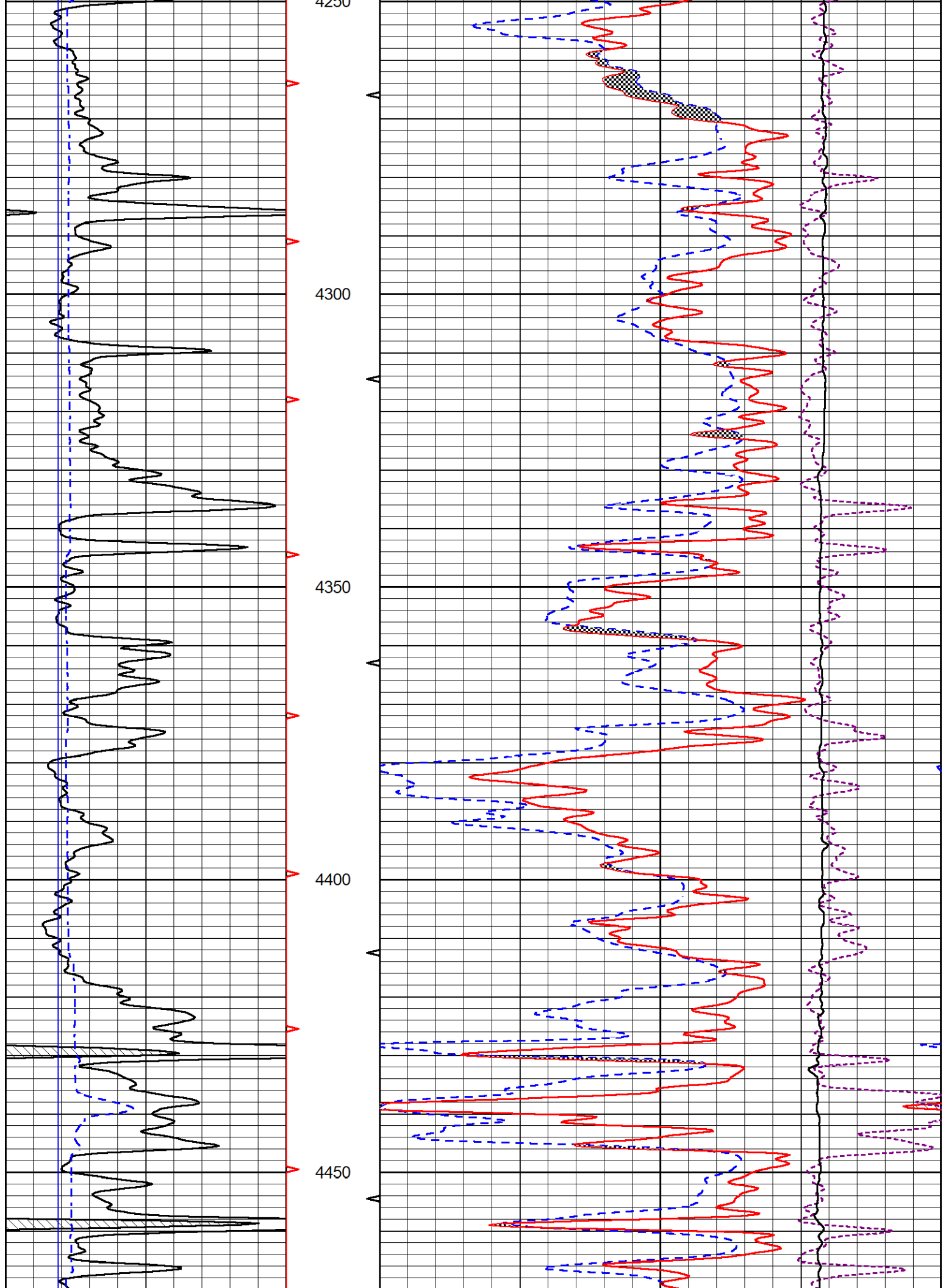
DETAIL SECTION

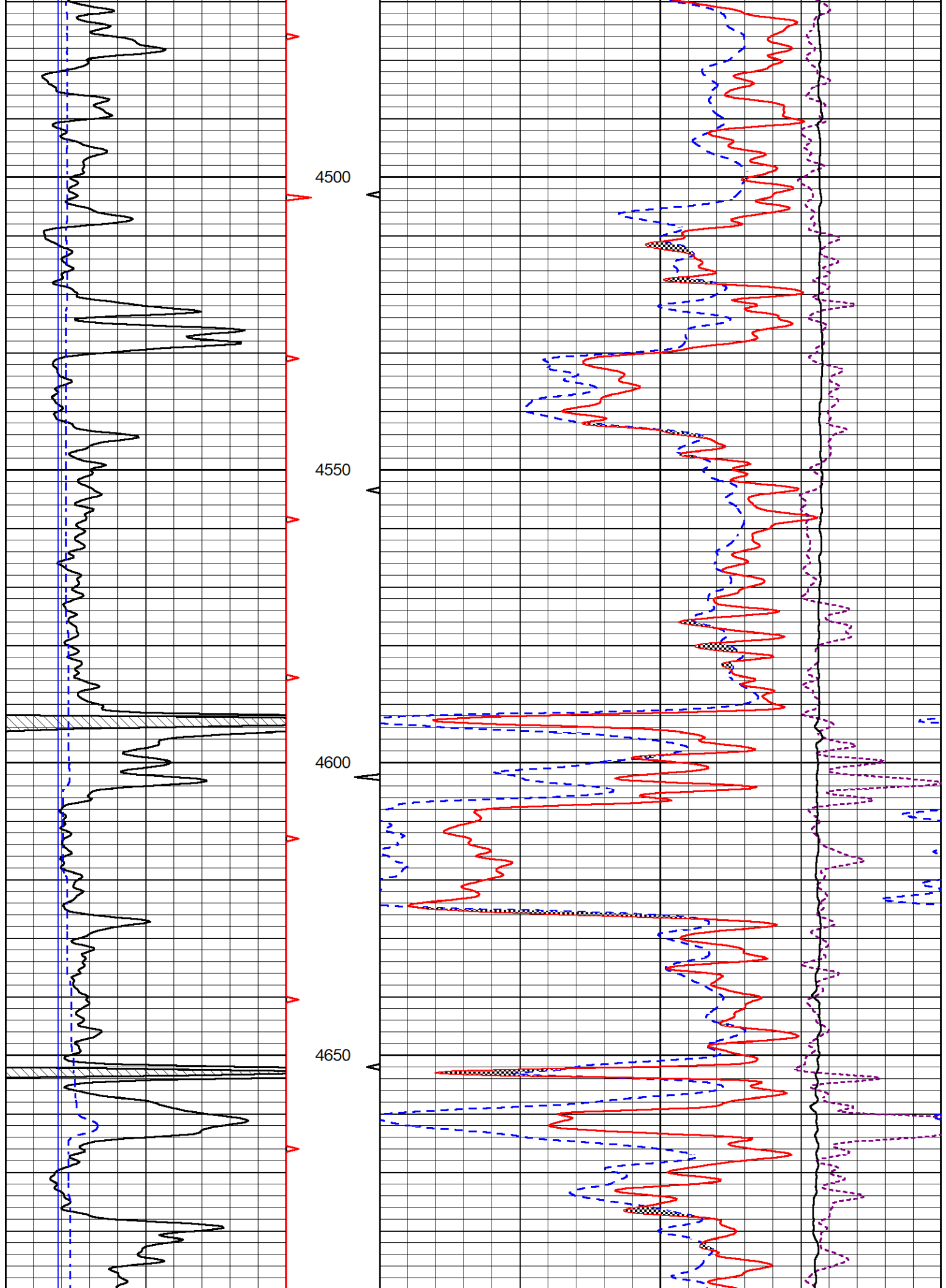
MAIN PASS

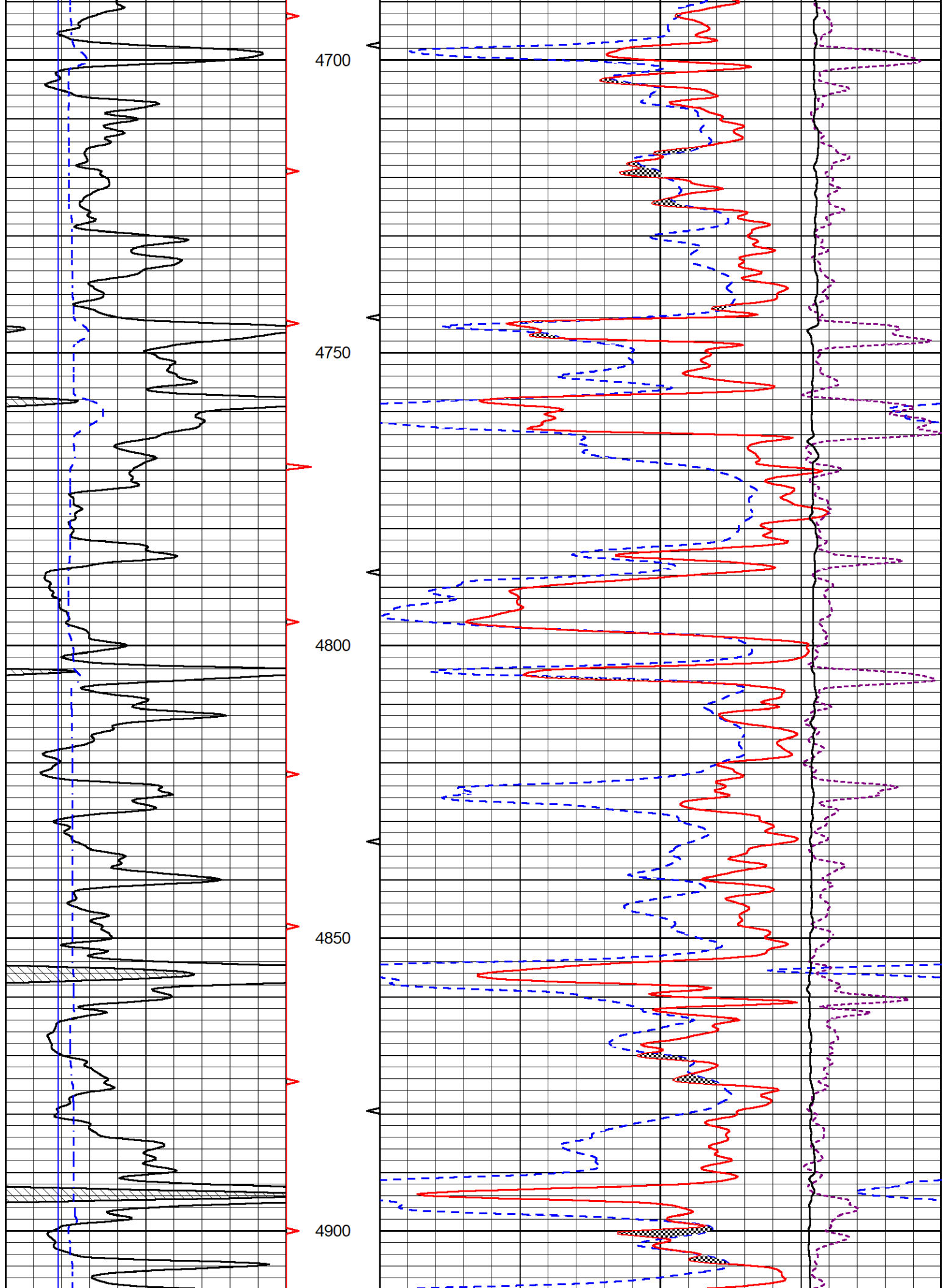
Database File palmer_holloway_6_2.db
 Dataset Pathname stack/pass4.1
 Presentation Format _CNDLS~1
 Dataset Creation Sun Nov 28 23:42:46 2021
 Charted by Depth in Feet scaled 1:240

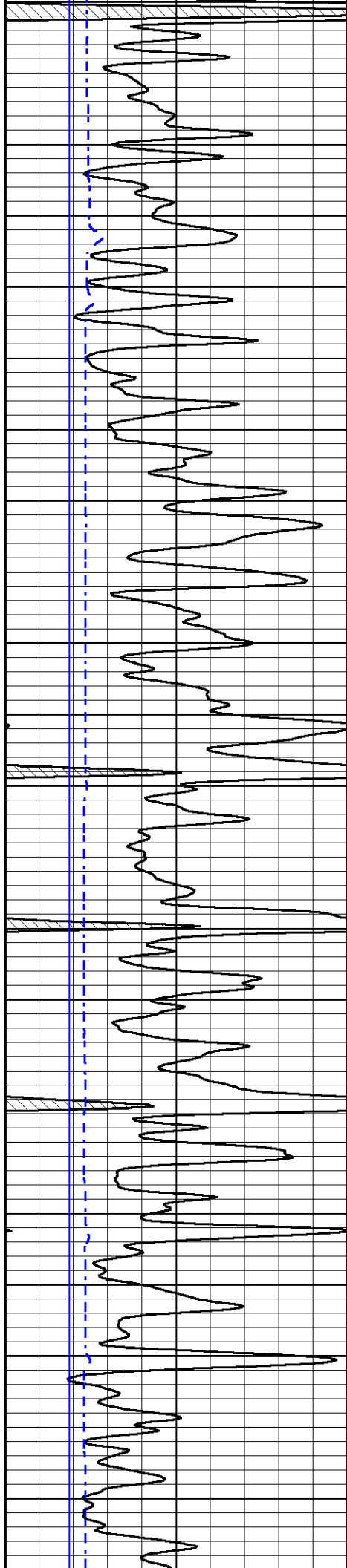










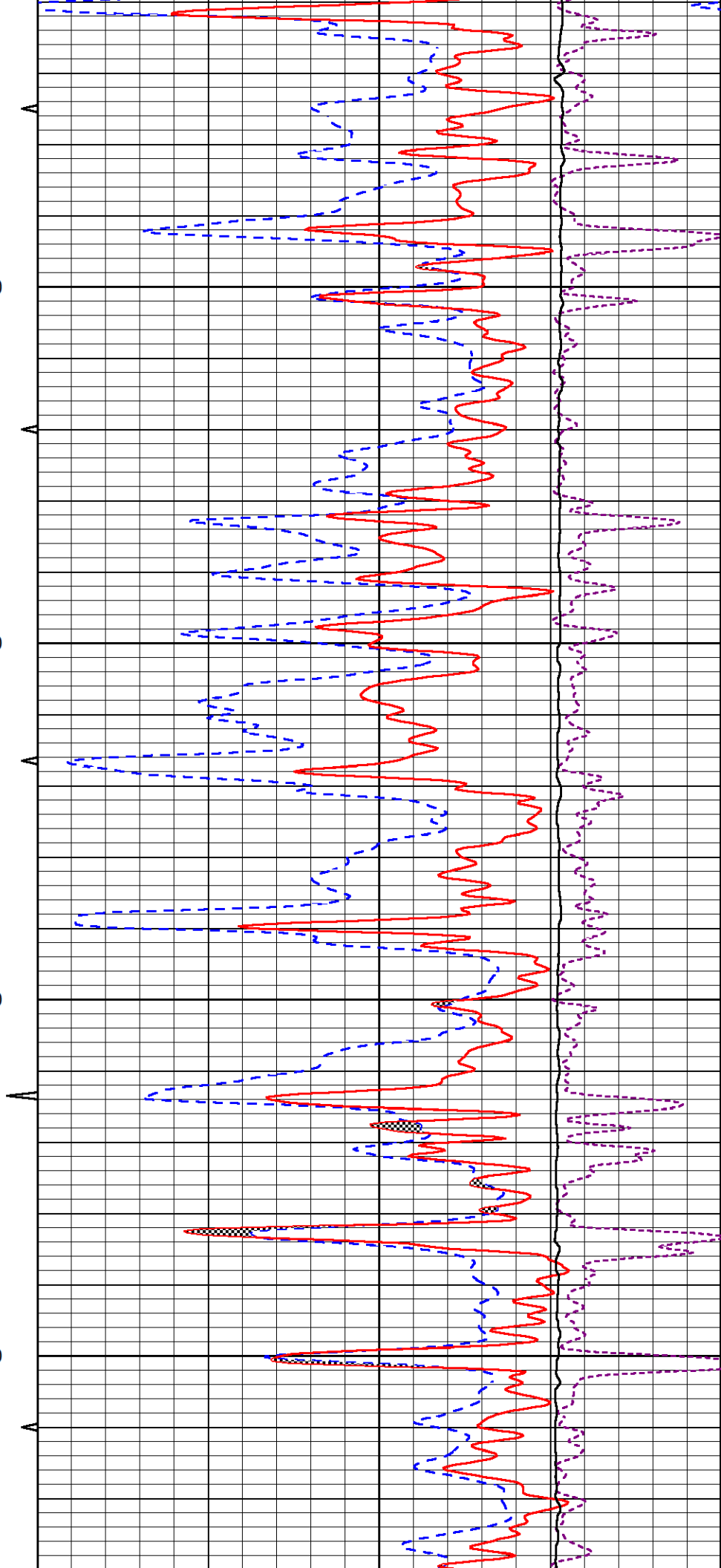


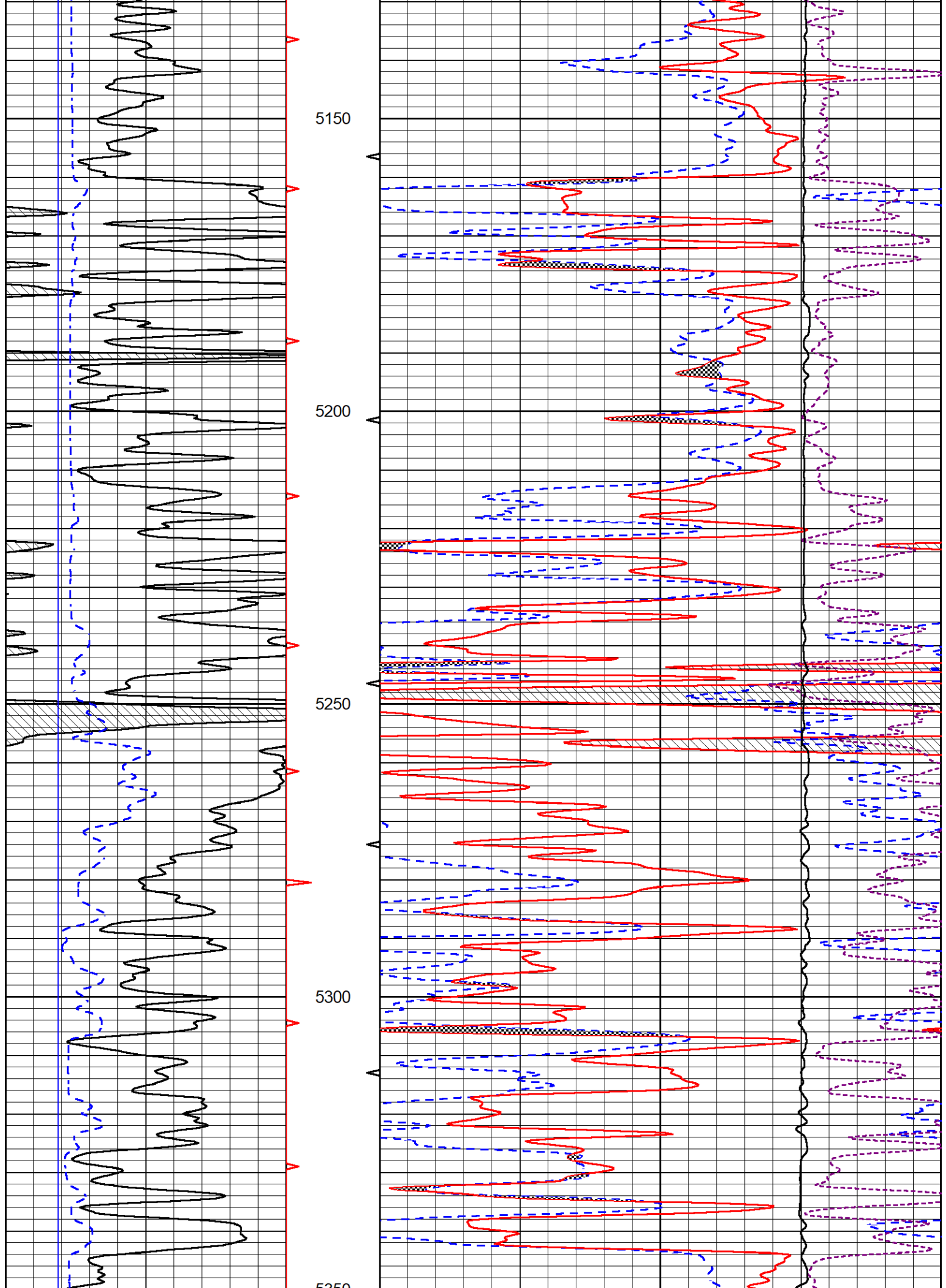
4950

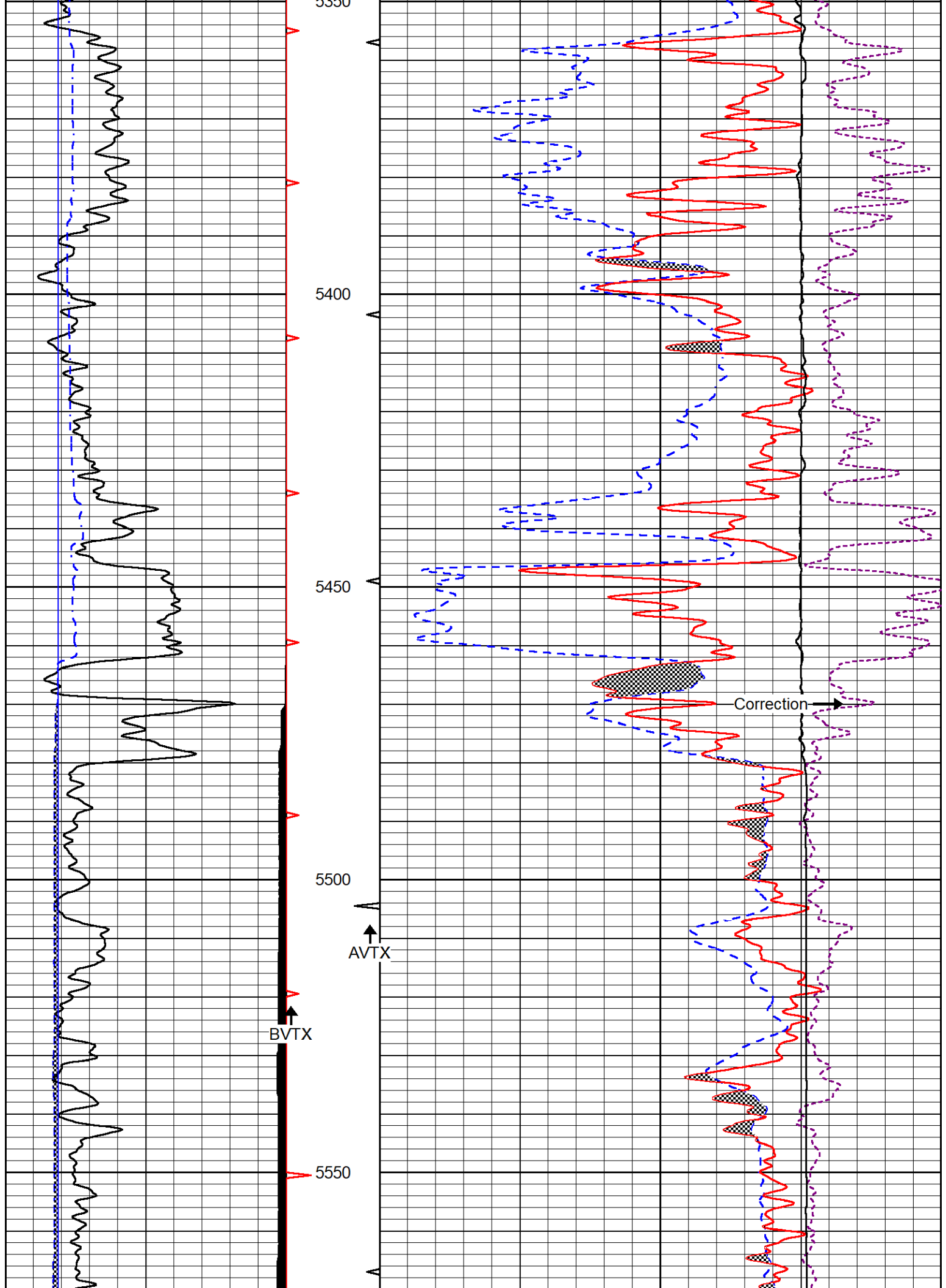
5000

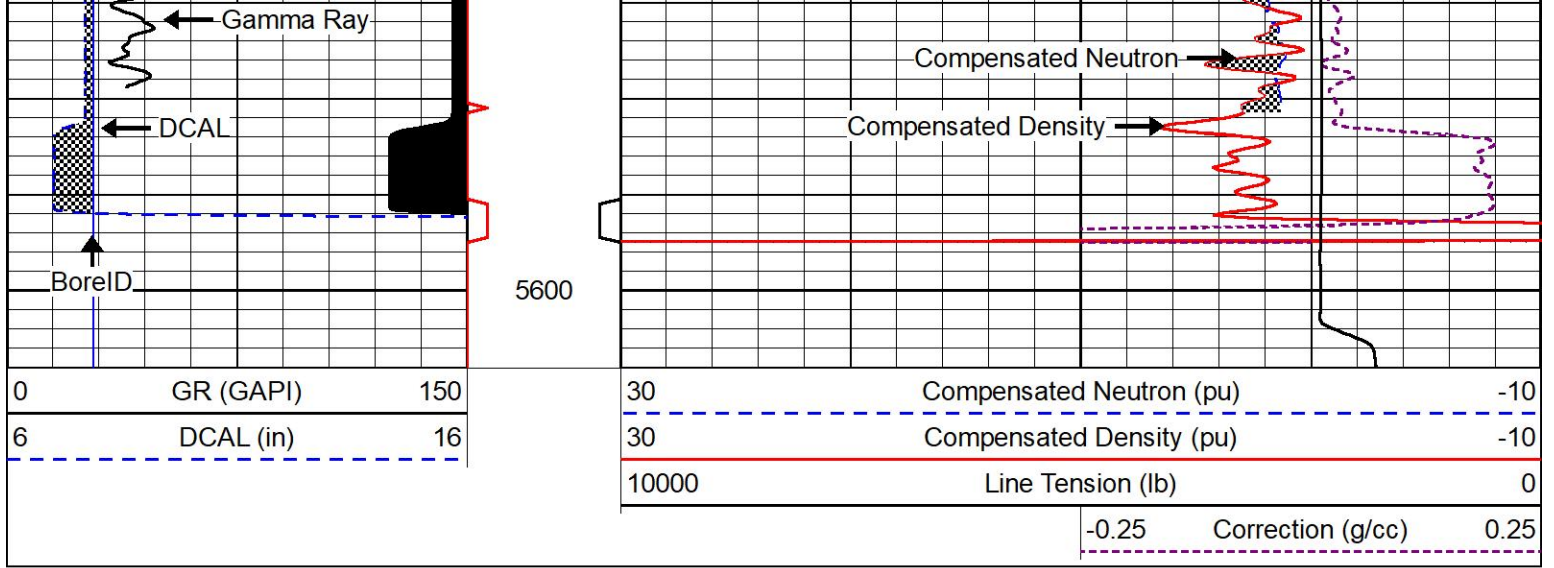
5050

5100









REPEAT SECTION

REPEAT PASS

Database File palmer_holloway_6_2.db
 Dataset Pathname stack/pass2.1
 Presentation Format _CNDLS~1
 Dataset Creation Sun Nov 28 23:41:51 2021
 Charted by Depth in Feet scaled 1:240

