



MIDWEST WIRELINE

MICRORESISTIVITY LOG

Company Palmer Oil, Inc.
 Well Holloway #6-2
 Field Wildcat
 County Haskell State Kansas

Location: API #: 15-081-22238-00-00
 2581 FNL & 1452 FWL
 SEC 6 TWP 28S RGE 33W
 Permanent Datum Ground Level Elevation 3034
 Log Measured From Kelly Bushing
 Drilling Measured From Kelly Bushing
 Other Services
 CNL/CDL
 DIL/BHCS
 Elevation
 K.B. 3047
 D.F.
 G.L. 3034

Date	11/28/2021
Run Number	Two
Depth Driller	5600
Depth Logger	5604
Bottom Logged Interval	5603
Top Log Interval	4000
Casing Driller	8.625 @ 1654
Casing Logger	1649
Bit Size	7.875
Type Fluid in Hole	Chemical
Salinity, ppm CL	1100
Density / Viscosity	9.3 45
pH / Fluid Loss	9.3 6.4
Source of Sample	FLOWLINE
Rm @ Meas. Temp	.95 @ 72
Rmt @ Meas. Temp	.71 @ 72
Rmc @ Meas. Temp	1.28 @ 72
Source of Rmf / Rmc	CHARTS
Rm @ BHT	.52 @ 132
Operating Rig Time	4 Hours
Max Rec. Temp. F	132
Equipment Number	P-108
Location	HAYS
Recorded By	J. Henrickson
Witnessed By	Kevin Timson

<<< Fold Here >>>

All interpretations are opinions based on inferences from electrical or other measurements and Midwest Wireline LLC cannot and does not guarantee the accuracy or correctness of any interpretation, and Midwest Wireline LLC will not be liable or responsible for any loss, costs, damages, or expenses incurred or sustained by anyone resulting from any interpretation made by any of our officers, agents or employees.

Comments

N/A DENOTES NOT AVAILABLE OR NON-APPLICABLE.

Garden City Kansas
 20 South to 50 Rd, West to GG, 2 1/2 South,
 East Into

Log Measured From: Kelly Bushing 13 Ft. Above Permanent Datum

THANK YOU FOR USING MIDWEST WIRELINE LLC
 785-625-3858

Your Midwest Wireline Crew

Engineer: J. Henrickson
 Operator:
 Operator:
 Operator:

This Log Record Was Witnessed By

Primary Witness: Kevin Timson
 Secondary Witness:
 Secondary Witness:
 Secondary Witness:

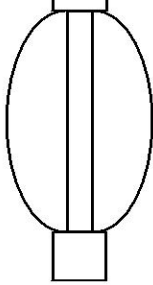
Log Variables

DatabaseC:\ProgramData\Warrior\Data\palmer_holloway_6_2.db
 Dataset field/well/stack/pass4.1/_vars_

Top - Bottom

A	BOREID in	BOTTEMP degF	CASEOD in	CASETHCK in	FLUIDDEN g/cc	M	MATRXDEN g/cc
1	7.875	134	5.5	0	1	2	2.71
NPORSEL	PERFS	SNDERR mmho/m	SNDERRM mmho/m	SPSHIFT mV	SRFTEMP degF	SZCOR	TDEPTH ft
Limestone	0	0	0	505	55	Off	5604

Sensor	Offset (ft)	Schematic	Description	Length (ft)	O.D. (in)	Weight (lb)
MCAL MI MN	28.00 28.00 28.00		ML-Armadillo (Armadillo-1) Pengo micro log tool mandrel with Armadillo Electronics	5.00	3.50	100.00
			CENT-PENGO	5.50	3.00	70.00
WVF4 WVF1	13.50 13.50		SLT-PENGO (0001)	16.00	3.50	300.00
WVF3 WVF2	11.50 11.50					



CENT-PENGO

5.50

3.00

70.00

Dataset: palmer_holloway_6_2.db: field/well/sonmel/pass3
 Total length: 32.00 ft
 Total weight: 540.00 lb
 O.D.: 3.50 in



MIDWEST WIRELINE

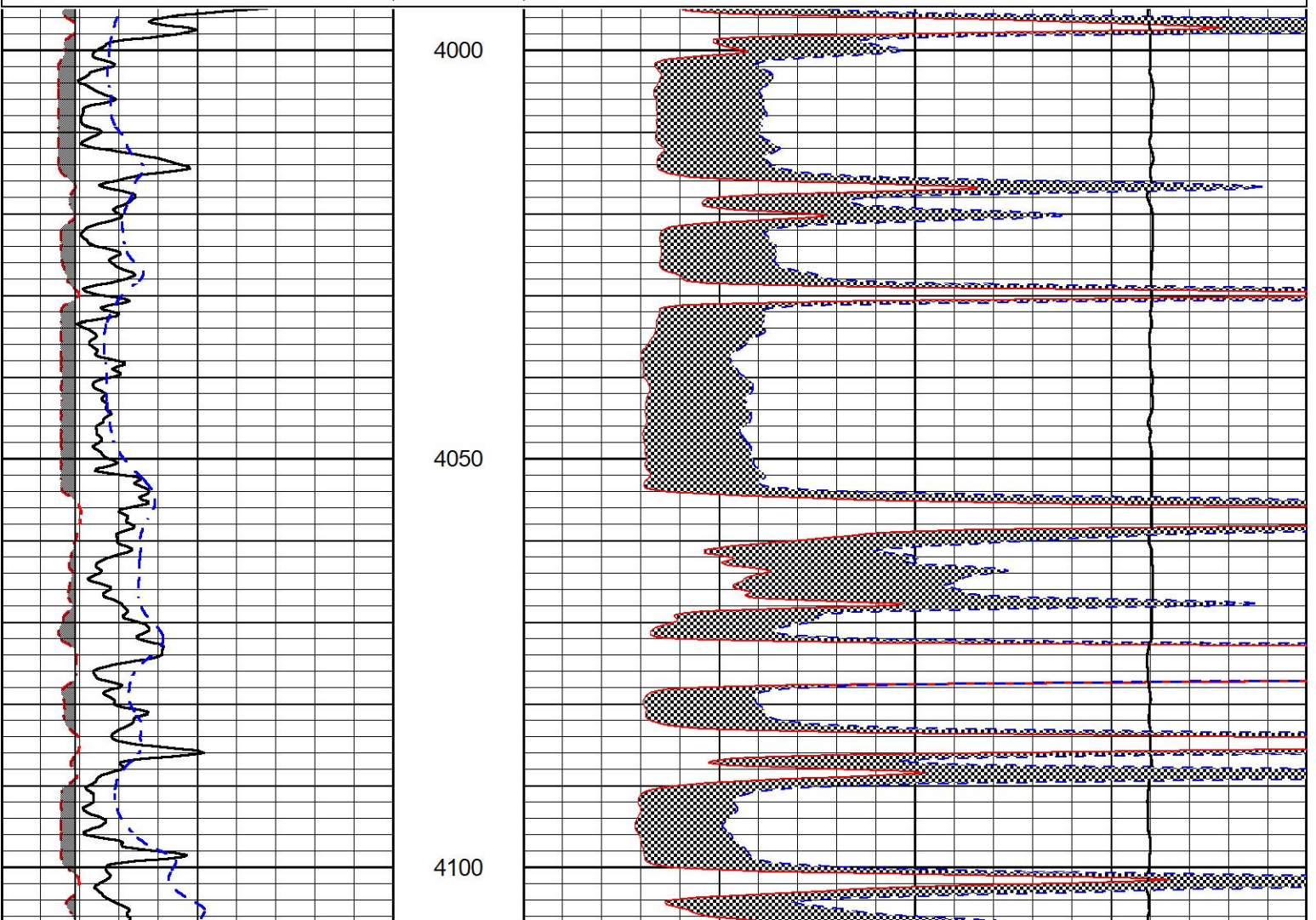
DETAIL SECTION

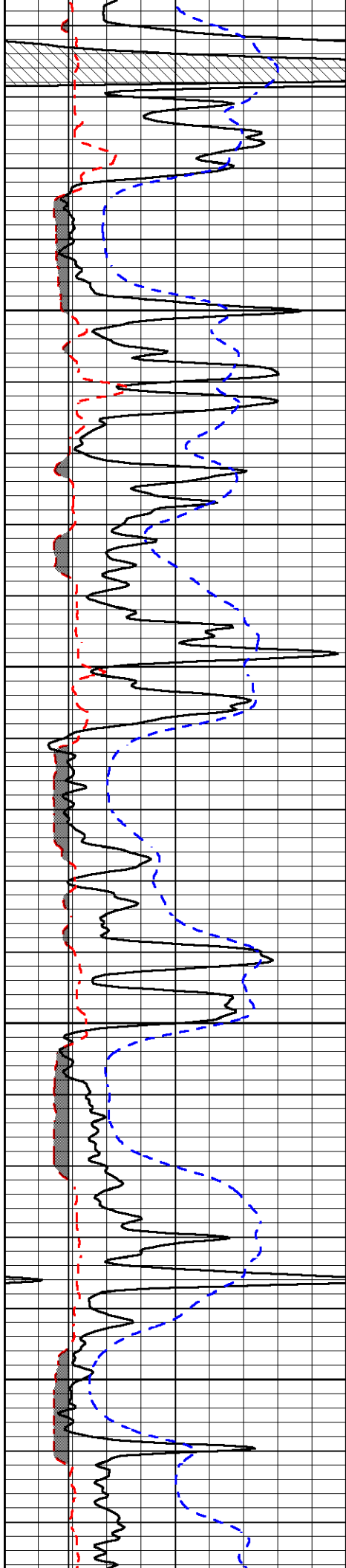
MAIN PASS

Database File palmer_holloway_6_2.db
 Dataset Pathname stack/pass4.1
 Presentation Format _micro
 Dataset Creation Sun Nov 28 23:42:46 2021
 Charted by Depth in Feet scaled 1:240

0	Gamma Ray (GAPI)	150
6	Caliper (in)	16
-200	SP (mV)	0

0	Micro Inverse 1 X 1 (Ohm-m)	40
0	Micro Normal 2" (Ohm-m)	40
10000	Line Weight (lb)	0



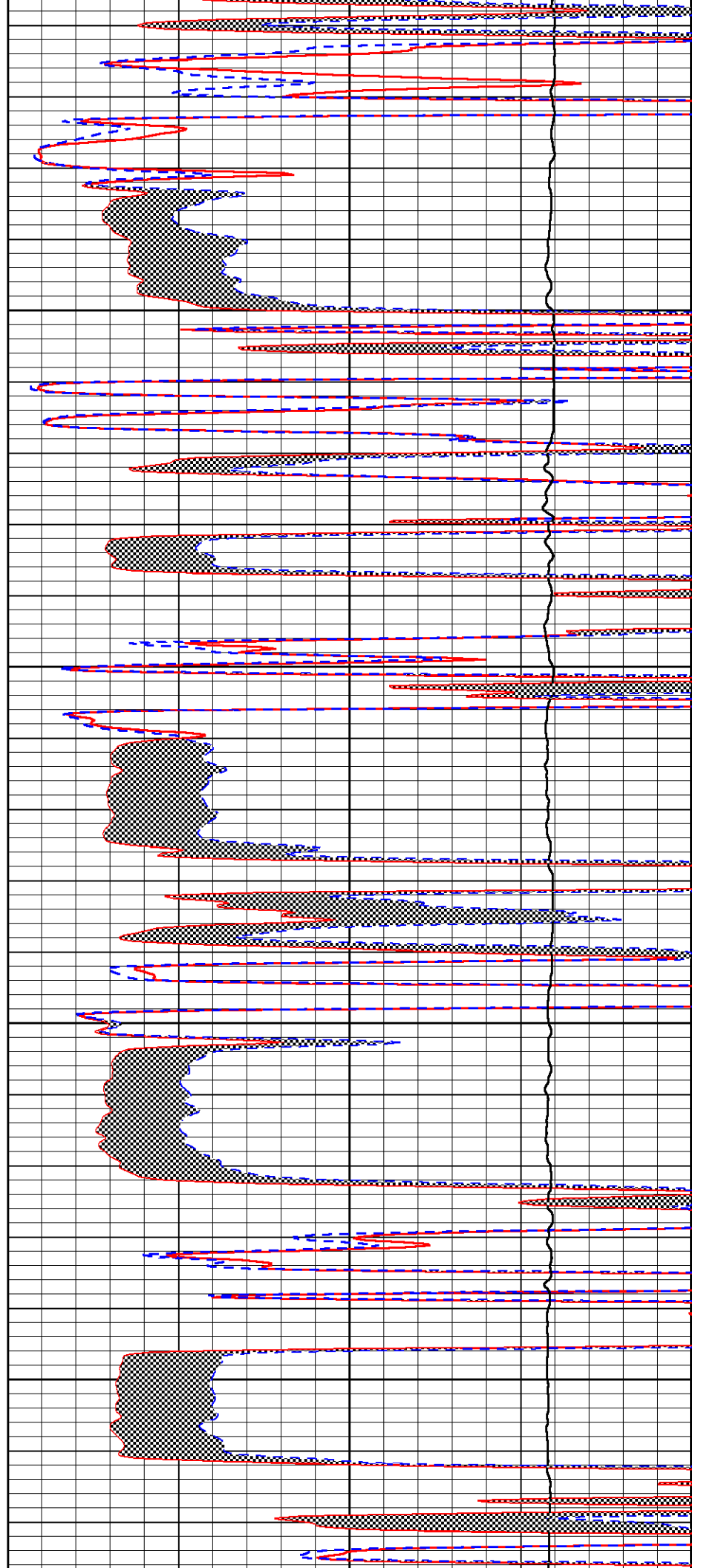


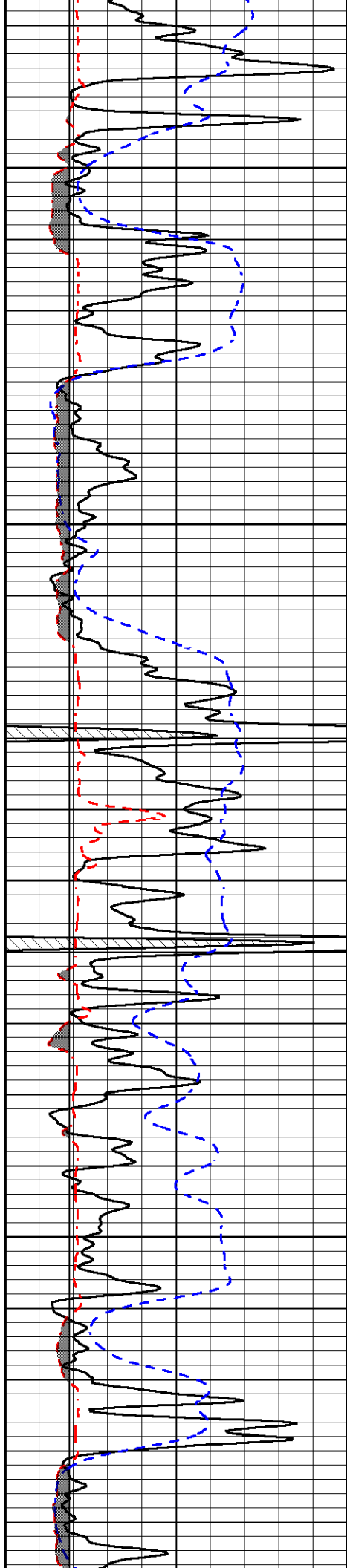
4150

4200

4250

4300



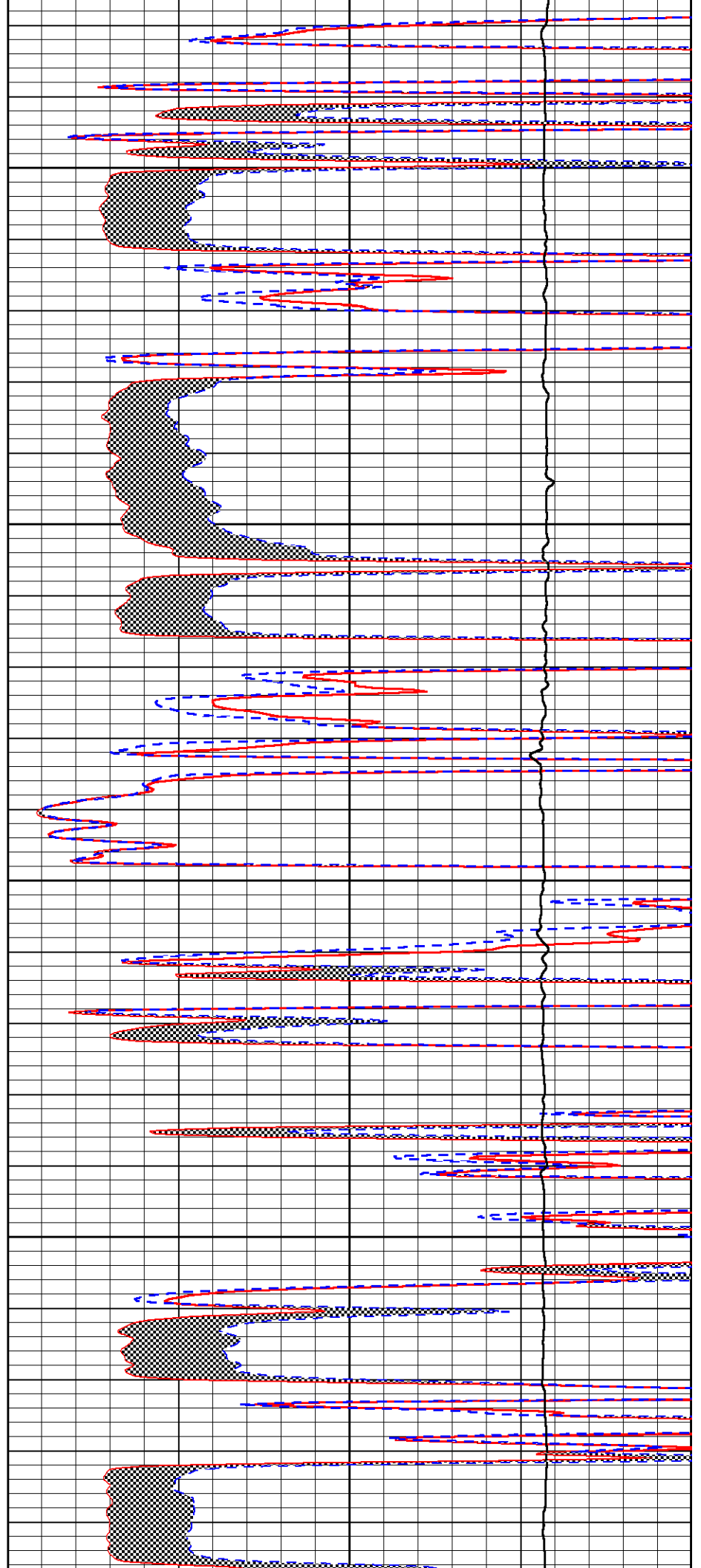


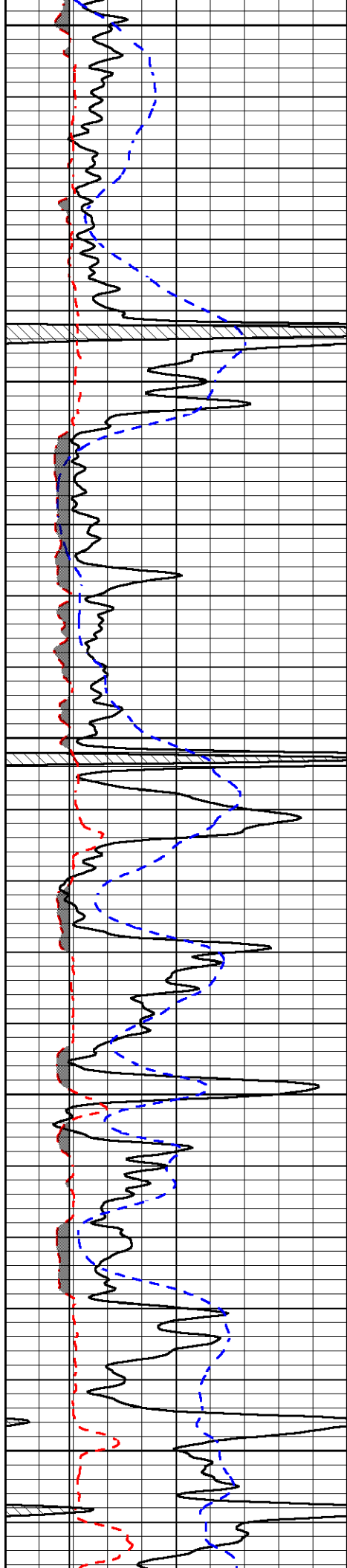
4350

4400

4450

4500





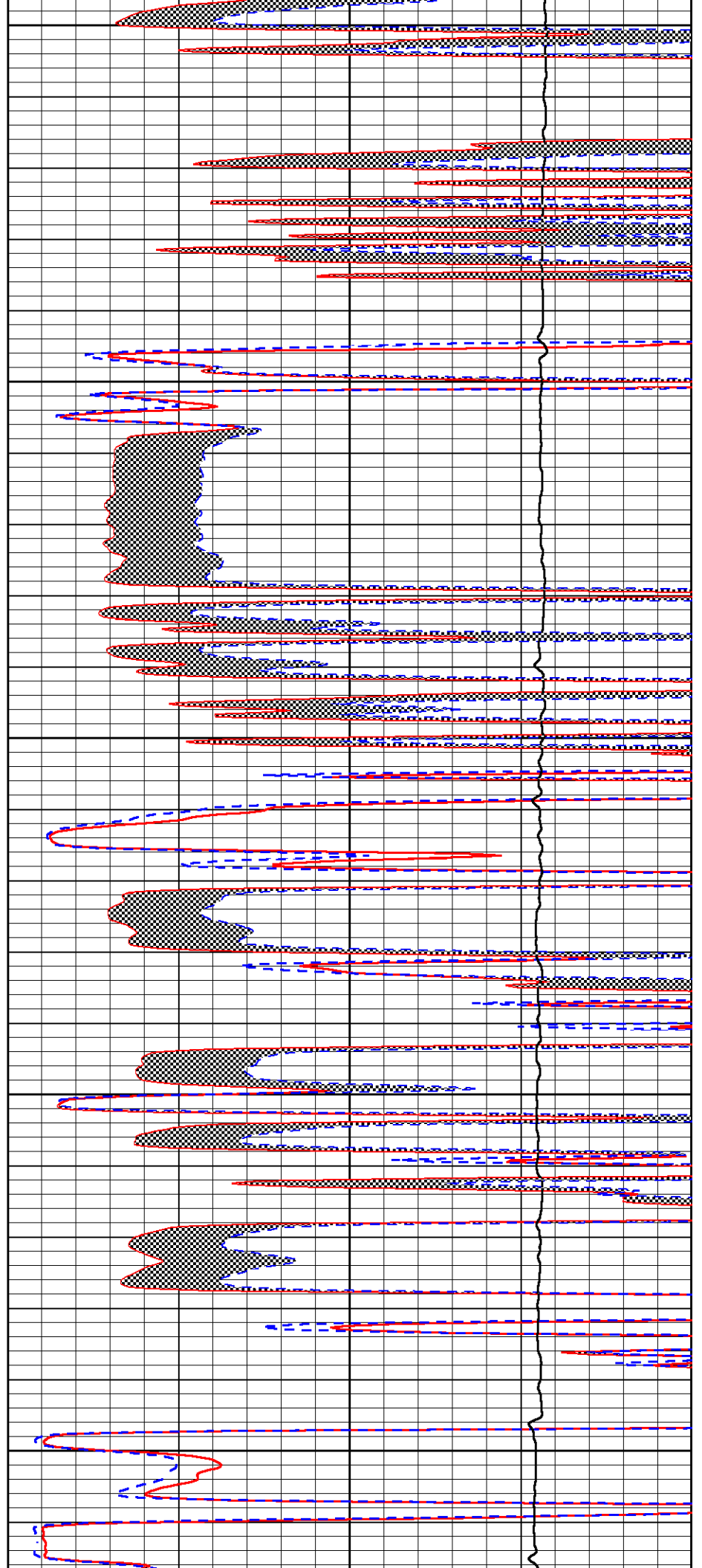
4550

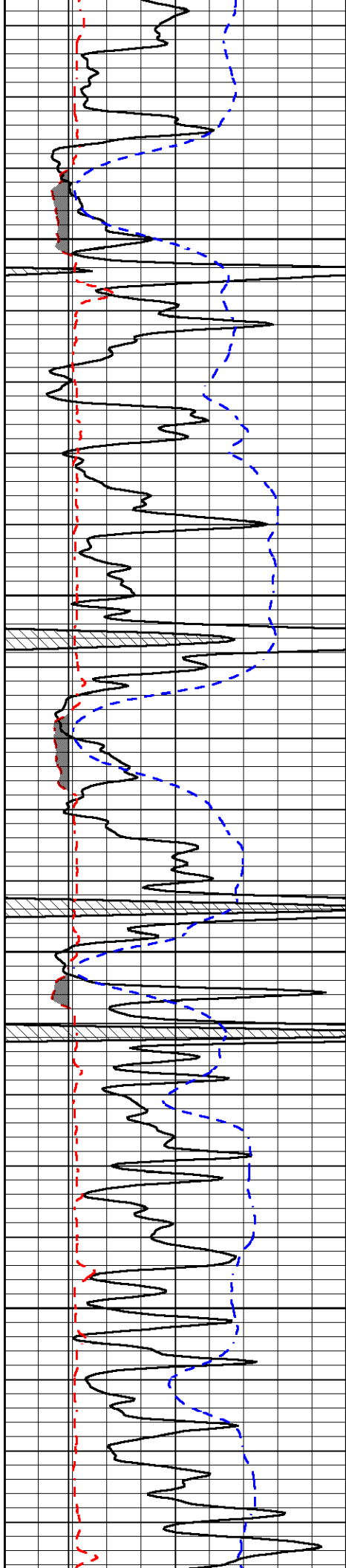
4600

4650

4700

4750



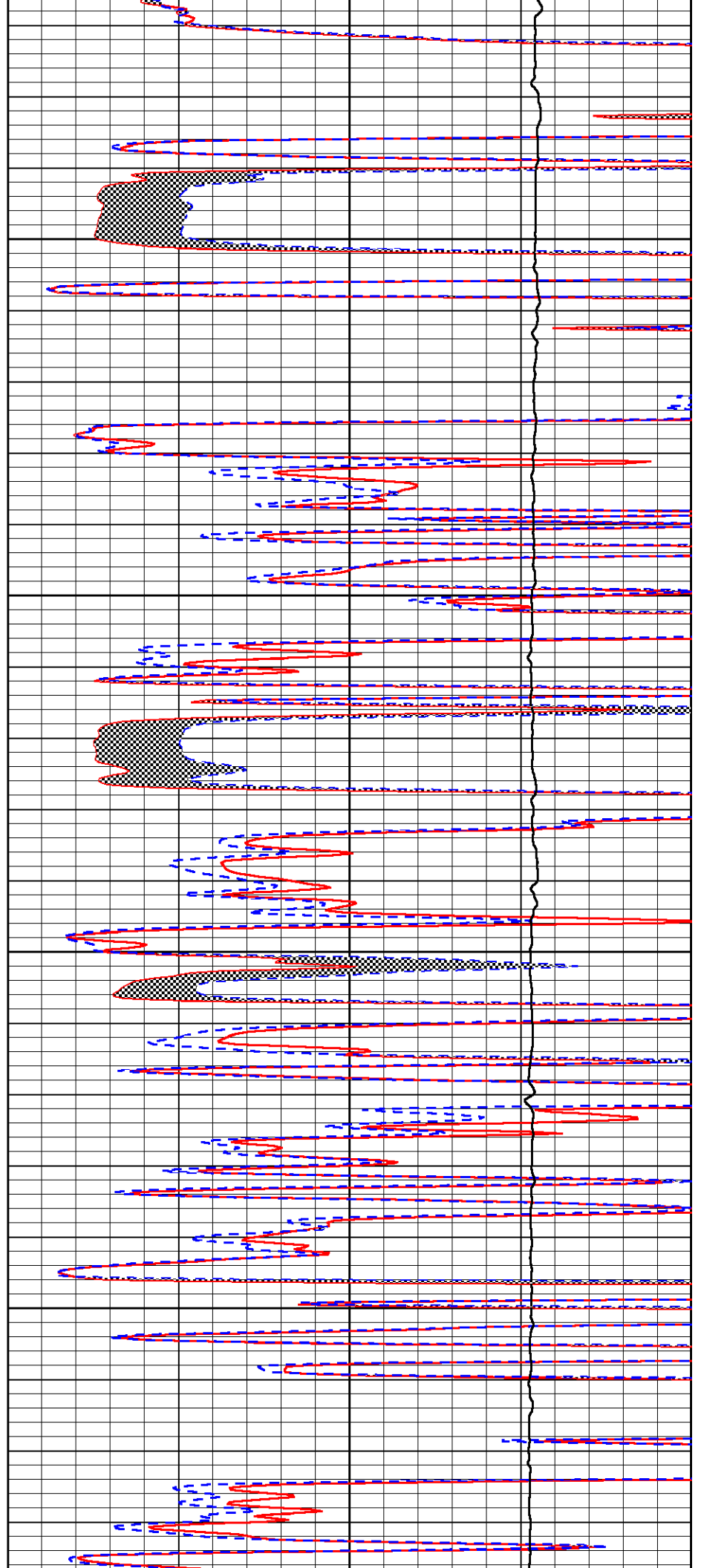


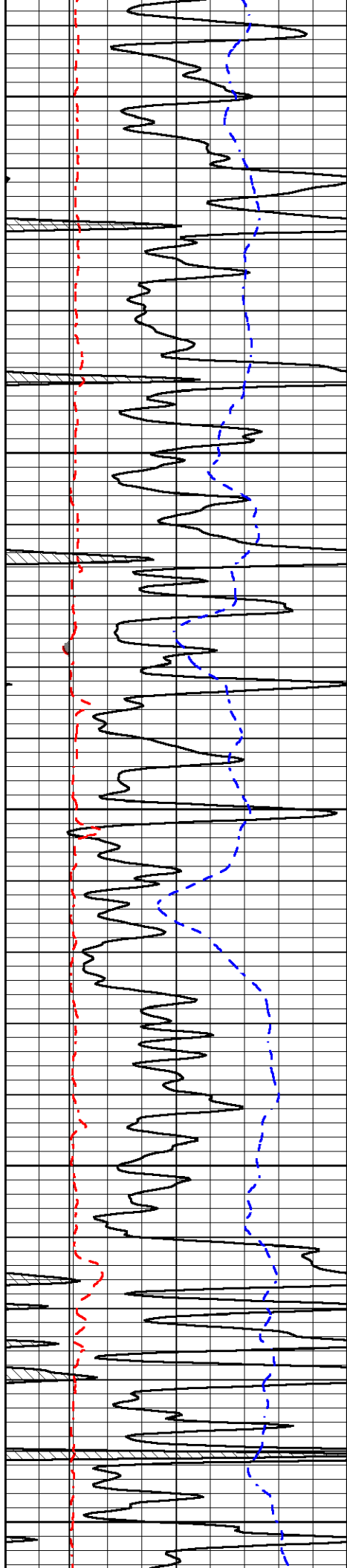
4800

4850

4900

4950





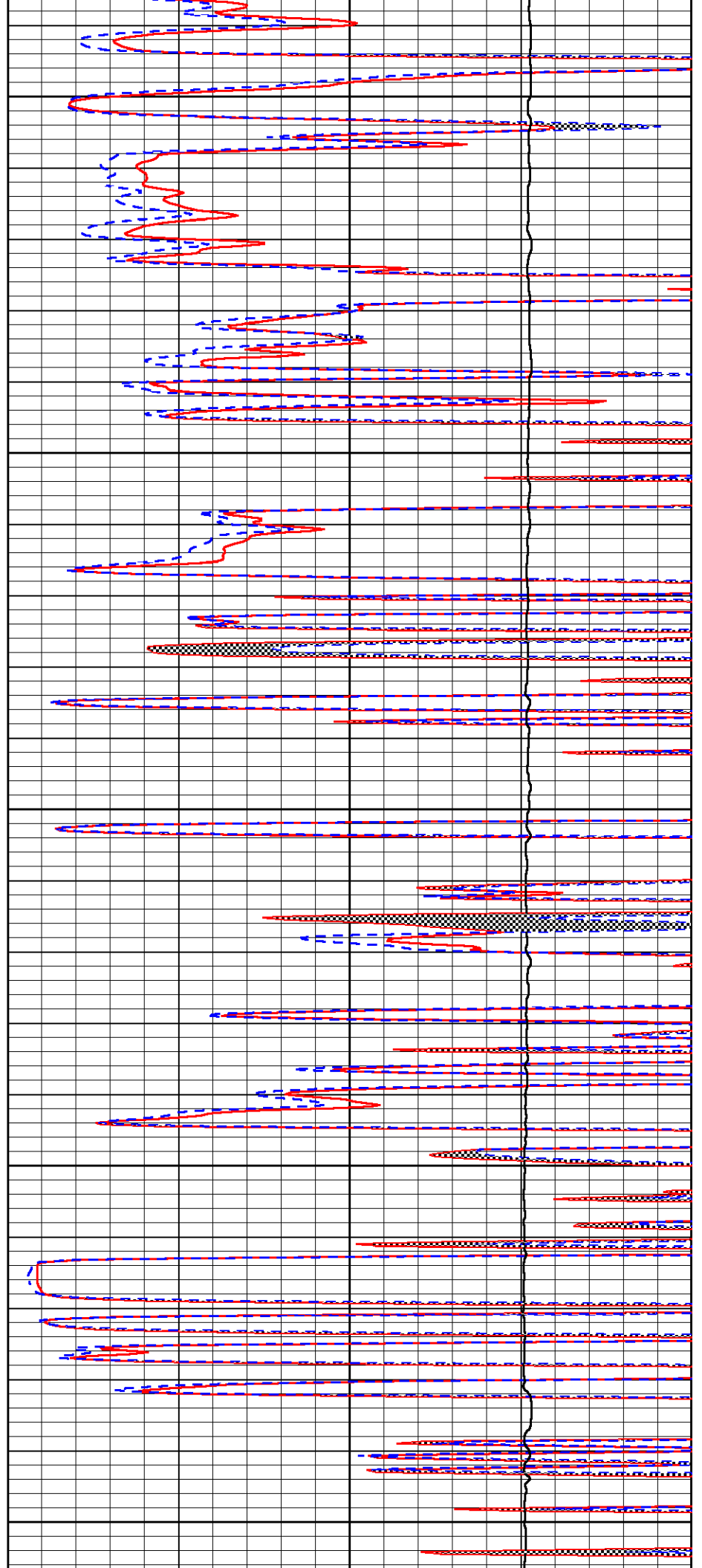
5000

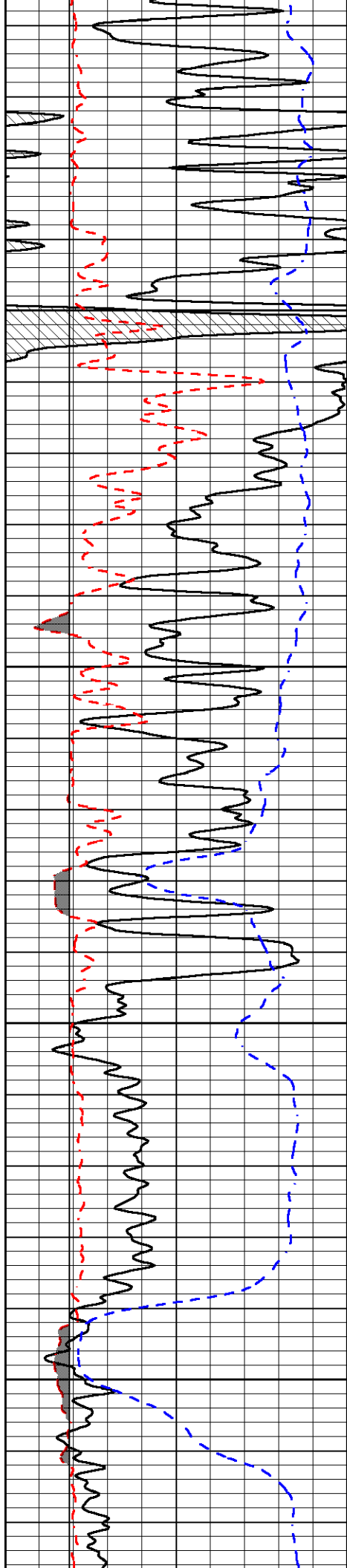
5050

5100

5150

5200



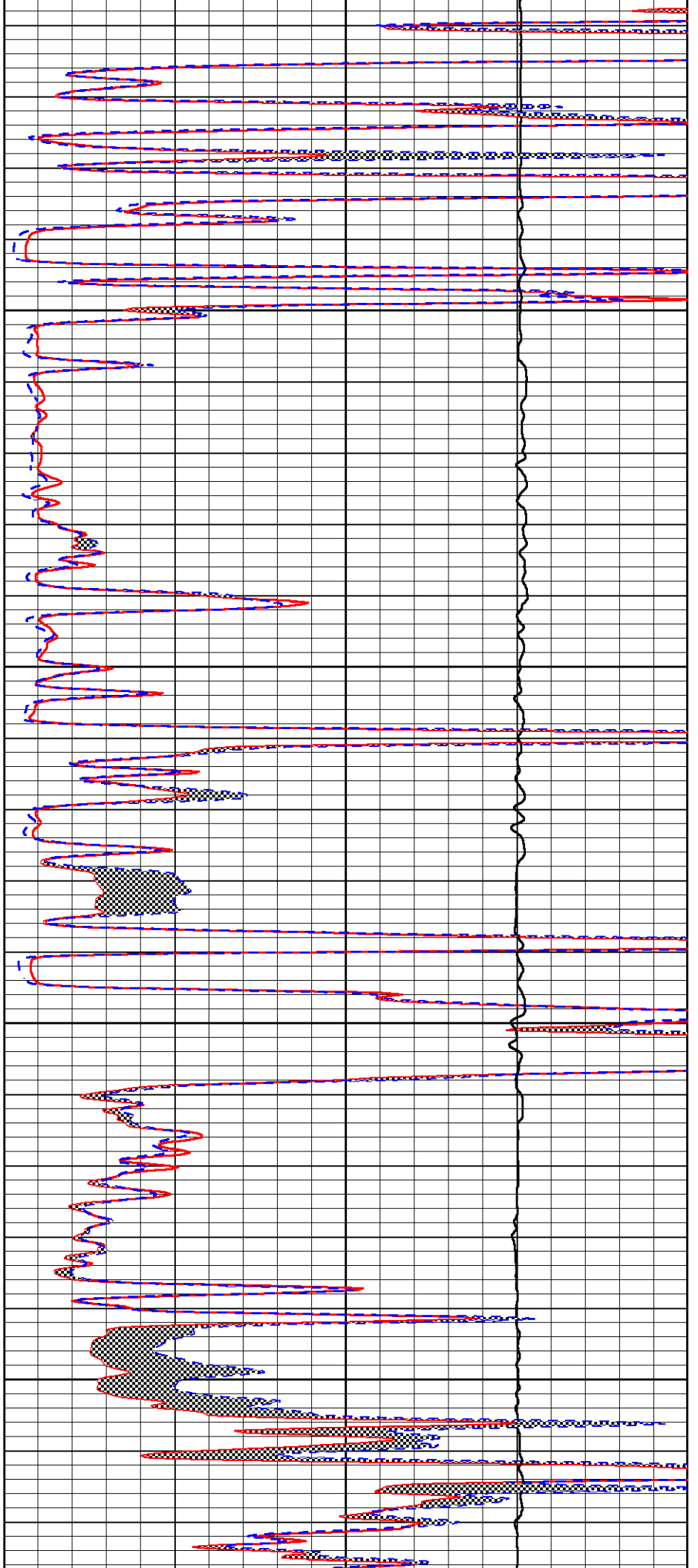


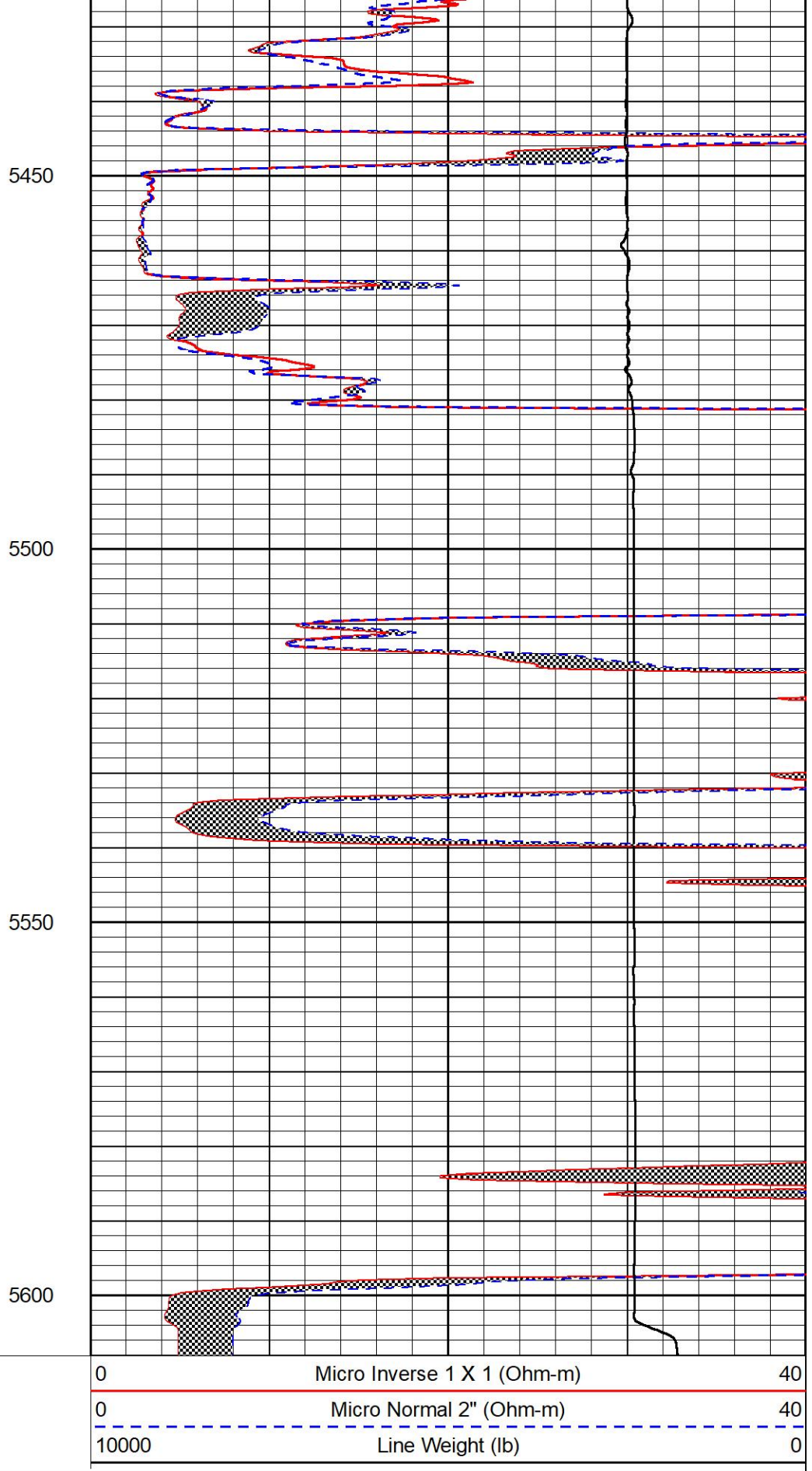
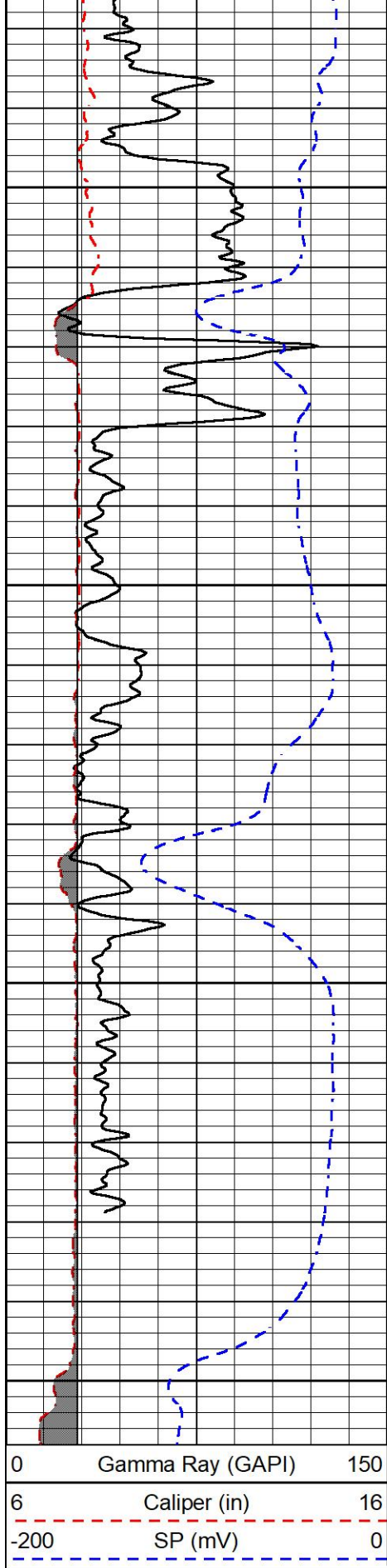
5250

5300

5350

5400





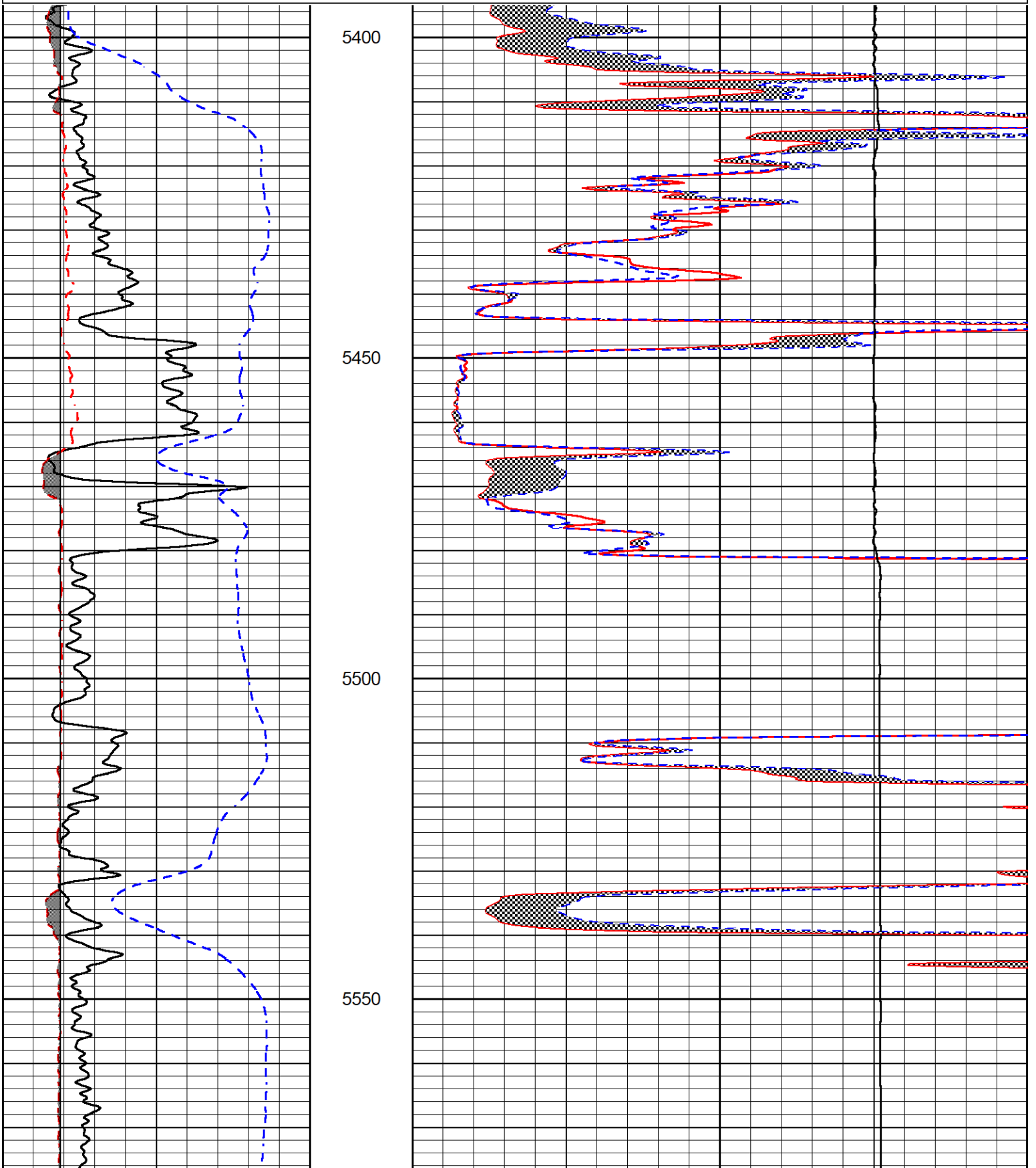
REPEAT SECTION

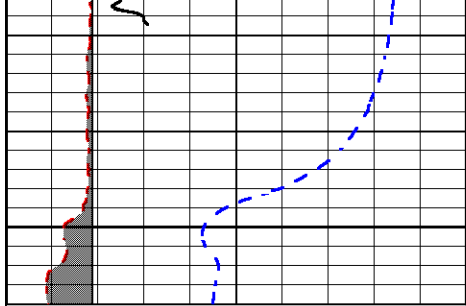
REPEAT PASS

Database File palmer_holloway_6_2.db
Dataset Pathname stack/pass2.1
Presentation Format _micro
Dataset Creation Sun Nov 28 23:41:51 2021
Charted by Depth in Feet scaled 1:240

0	Gamma Ray (GAPI)	150
6	Caliper (in)	16
-200	SP (mV)	0

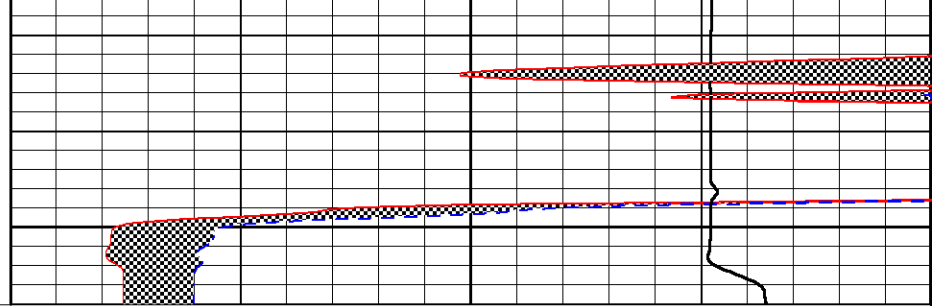
0	Micro Inverse 1 X 1 (Ohm-m)	40
0	Micro Normal 2" (Ohm-m)	40
10000	Line Weight (lb)	0





0	Gamma Ray (GAPI)	150
6	Caliper (in)	16
-200	SP (mV)	0

5600



0	Micro Inverse 1 X 1 (Ohm-m)	40
0	Micro Normal 2" (Ohm-m)	40
10000	Line Weight (lb)	0