



**COMPENSATED  
DENSITY/NEUTRON  
LOG**

**Company** PANTERA ENERGY COMPANY  
**Well** KMU #14-8  
**Field** KOENIG  
**County** HASKELL      **State** KANSAS

**Location:** API #: 15-081-22264-0000  
 2167' FNL & 372' FEL  
 NW - SE - SE - NE  
 SEC 14 TWP 29S RGE 34W  
**Permanent Datum** GROUND LEVEL Elevation 2958  
**Log Measured From** KELLY BUSHING 13' A.G.L.  
**Drilling Measured From** KELLY BUSHING

**Company** PANTERA ENERGY COMPANY  
**Well** KMU #14-8  
**Field** KOENIG  
**County** HASKELL  
**State** KANSAS

Date	7/1/23			Elevation K.B. 2971 D.F. 2969 G.L. 2958
Run Number	ONE			
Depth Driller	1735			
Depth Logger	1735			
Bottom Logged Interval	1711			
Top Log Interval	750			
Casing Driller	9 5/8" @ 759			
Casing Logger	759			
Bit Size	7 7/8			
Type Fluid in Hole	CHEMICAL MUD		CHLORIDES 250 PPM	
Density / Viscosity	8.4/28			
PH / Fluid Loss	8.5/15			
Source of Sample	FLOWLINE			
Rm @ Meas. Temp	2.20 @ 75F			
Rmt @ Meas. Temp	1.65 @ 75F			
Rmc @ Meas. Temp	2.64 @ 75F			
Source of Rmf / Rmc	MEASUREMENT			
Rm @ BHT	1.72 @ 96F			
Time Circulation Stopped	2 HOURS			
Time Logger on Bottom	4:00 A.M.			
Maximum Recorded Temperature	96F			
Equipment Number	8916			
Location	HAYS, KANSAS			
Recorded By	COLE ROBBEN			
Witnessed By	TERRY SORTER	JAKE SLATTEN		

<<< Fold Here >>>

All interpretations are opinions based on inferences from electrical or other measurements and we cannot and do not guarantee the accuracy or correctness of any interpretation, and we shall not, except in the case of gross or willful negligence on our part, be liable or responsible for any loss, costs, damages, or expenses incurred or sustained by anyone resulting from any interpretation made by any of our officers, agents or employees. These interpretations are also subject to our general terms and conditions set out in our current Price Schedule.

**Comments**

THANK YOU FOR USING ELI WIRELINE SERVICES, HAYS, KS. ( 785 ) 628-6395

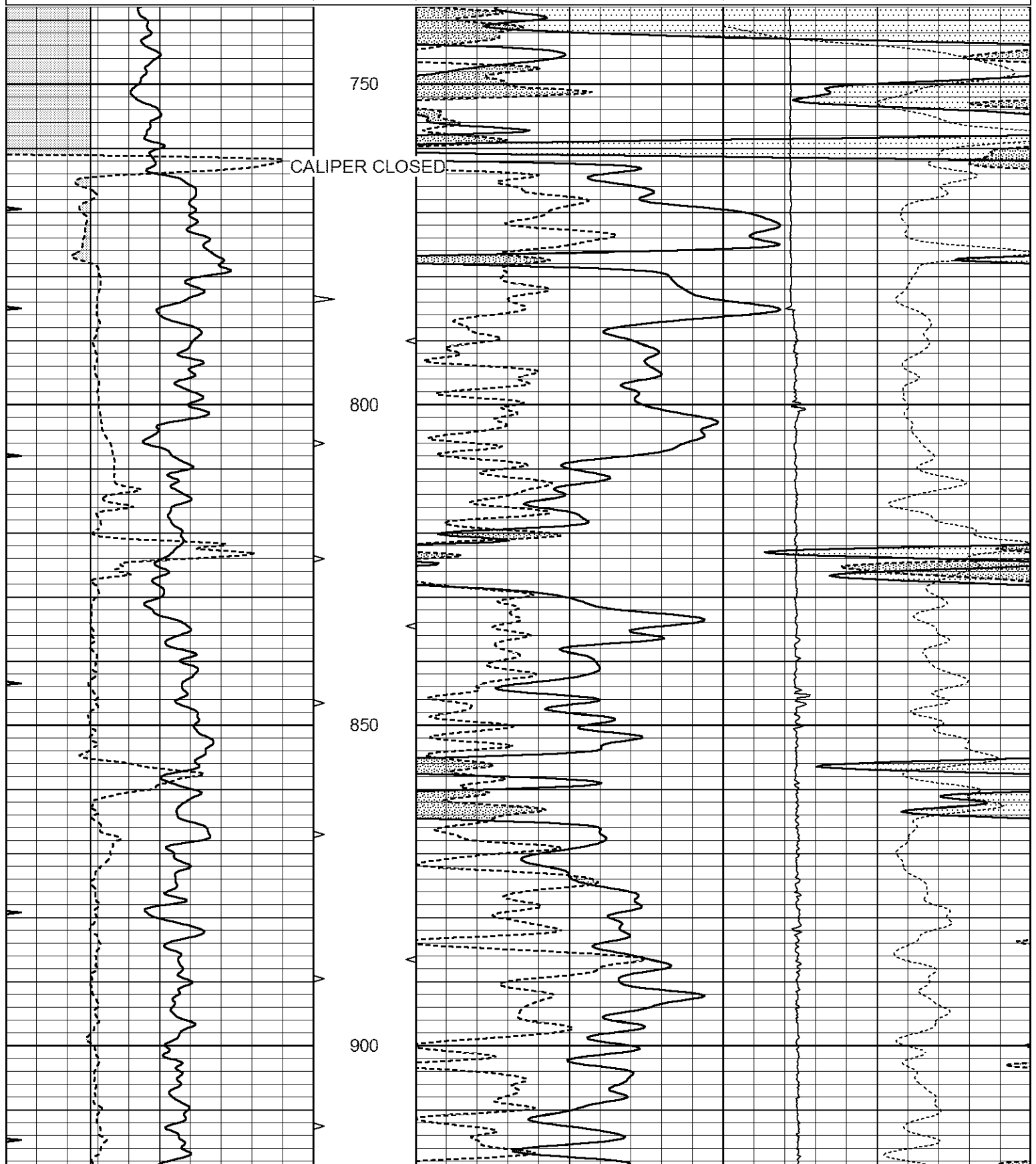
**DIRECTIONS:**  
 FROM SATANTA, KANSAS GO NORTHWEST ON HIGHWAY 190 TO 'FF' ROAD, THEN 6 MILES NORTH, WEST INTO

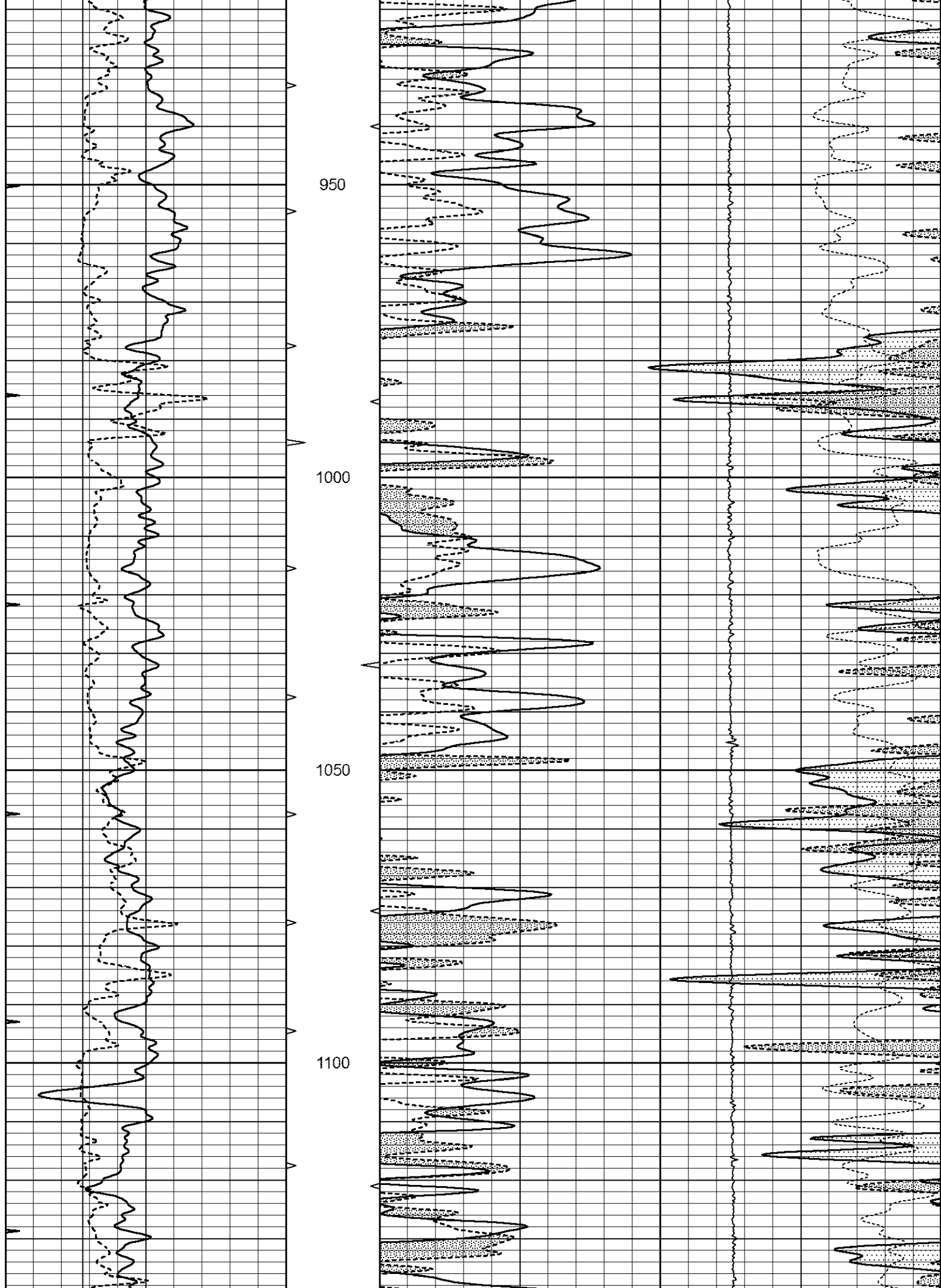


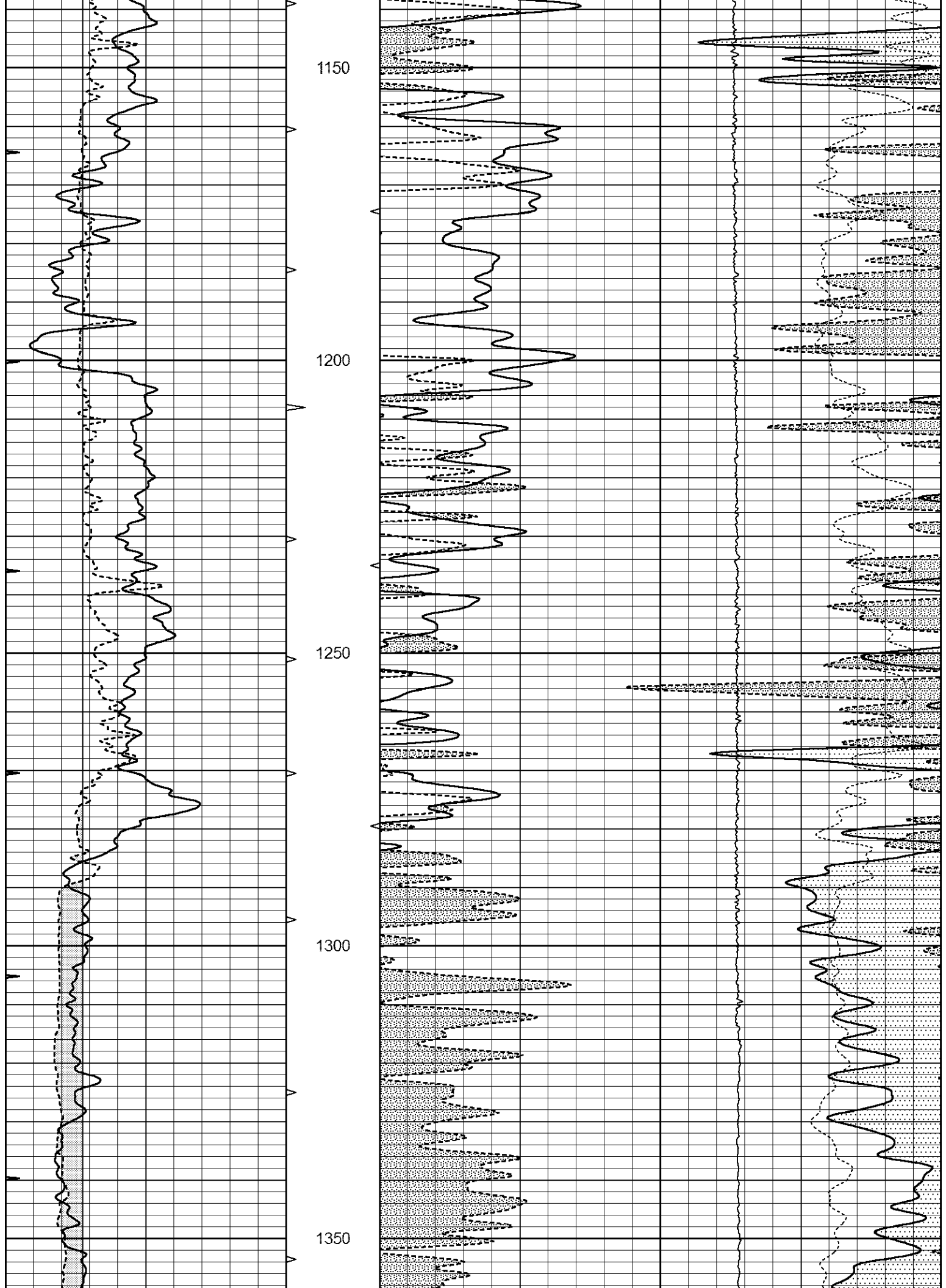
**MAIN SECTION**

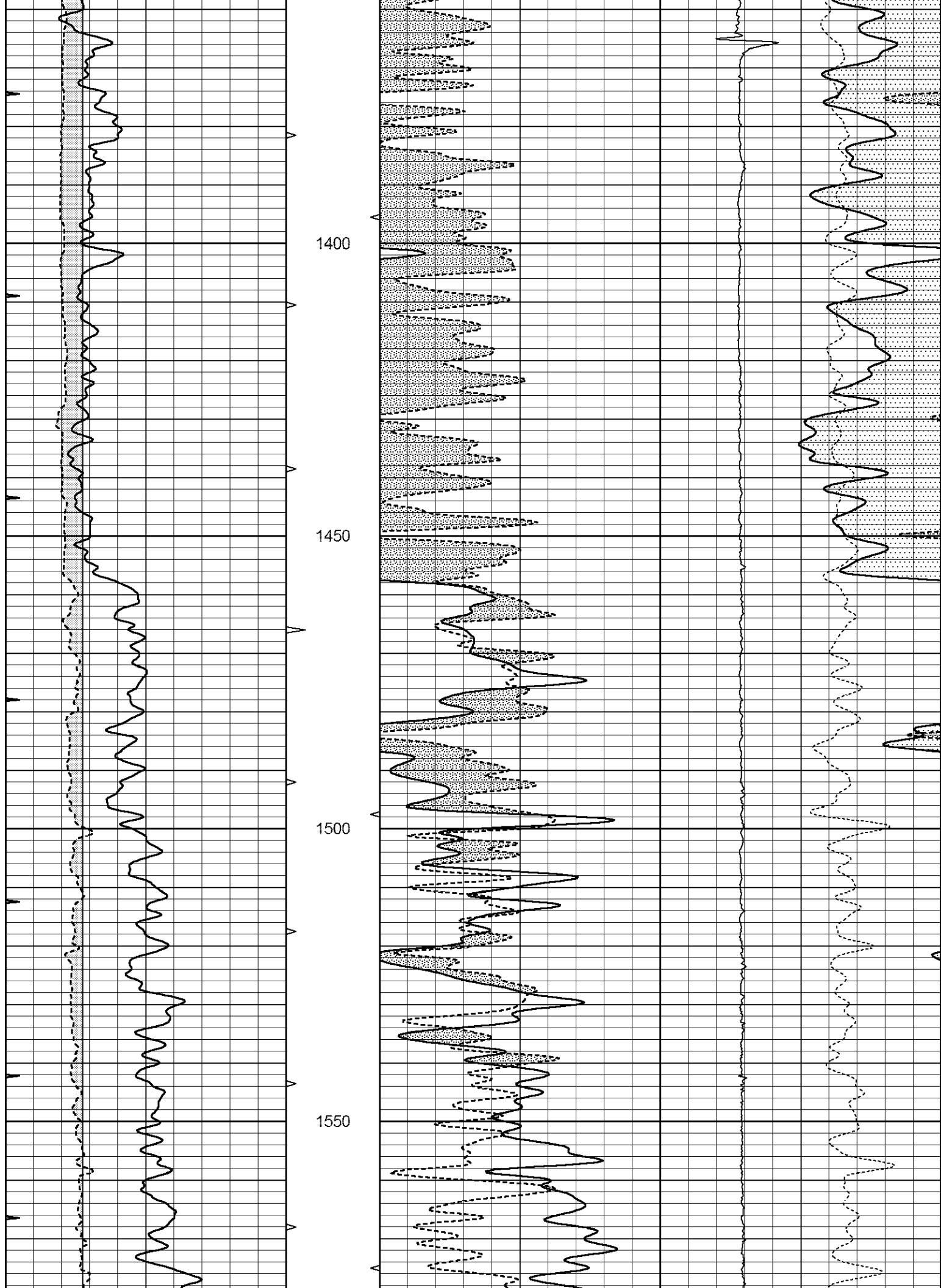
Database File 7600ddn.db  
 Dataset Pathname pass3.4  
 Presentation Format \_den\_neu  
 Dataset Creation Sat Jul 01 05:11:53 2023  
 Charted by Depth in Feet scaled 1:240

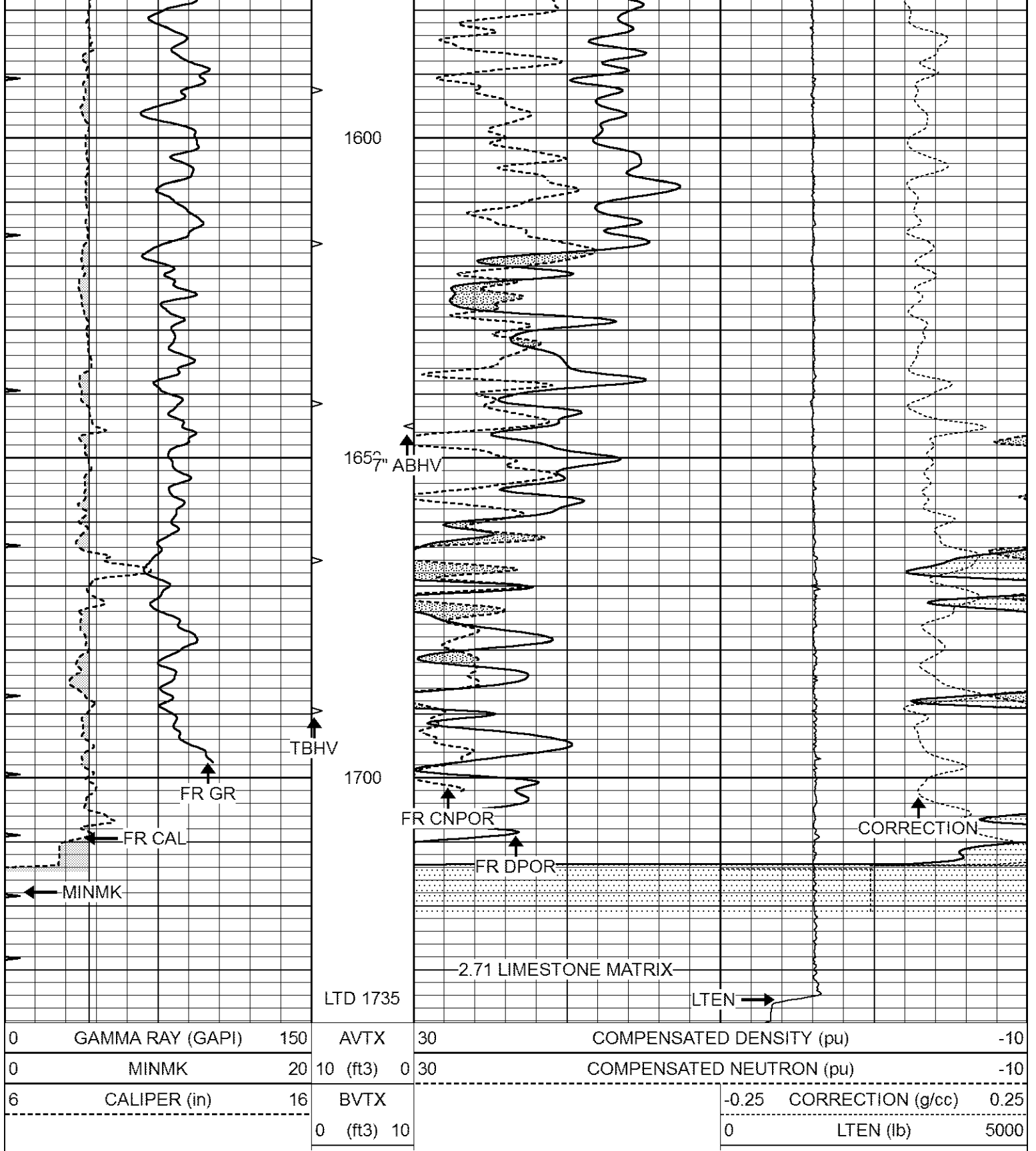
0	GAMMA RAY (GAPI)	150	AVTX	30	COMPENSATED DENSITY (pu)	-10
0	MINMK	20	10 (ft3) 0	30	COMPENSATED NEUTRON (pu)	-10
6	CALIPER (in)	16	BVTX		-0.25 CORRECTION (g/cc)	0.25
			0 (ft3) 10		0 LTEN (lb)	5000







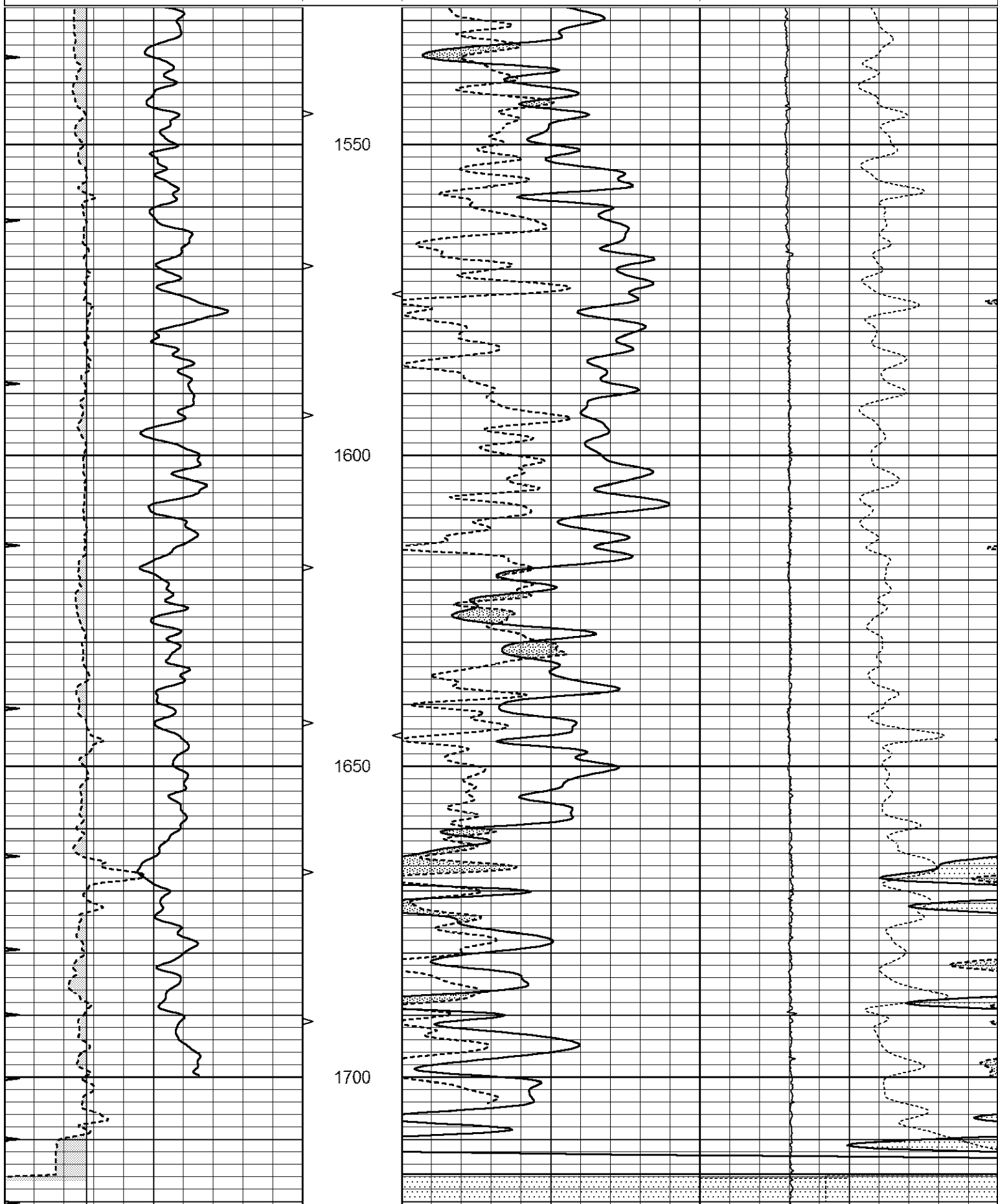




# REPEAT SECTION

Database File 7600ddn.db  
 Dataset Pathname pass2.2  
 Presentation Format \_den\_neu  
 Dataset Creation Sat Jul 01 05:25:20 2023

0	GAMMA RAY (GAPI)	150	AVTX	30	COMPENSATED DENSITY (pu)	-10
0	MINMK	20	10 (ft3) 0	30	COMPENSATED NEUTRON (pu)	-10
6	CALIPER (in)	16	BVTX		-0.25 CORRECTION (g/cc)	0.25
			0 (ft3) 10		0 LTEN (lb)	5000



0	GAMMA RAY (GAPI)	150	AVTX	30	COMPENSATED DENSITY (pu)			-10
0	MINMK	20	10 (ft3) 0	30	COMPENSATED NEUTRON (pu)			-10
6	CALIPER (in)	16	BVTX		-0.25	CORRECTION (g/cc)	0.25	
			0 (ft3) 10		0	LTEN (lb)	5000	

Calibration Report

Database File 7600ddn.db  
 Dataset Pathname pass3.4  
 Dataset Creation Sat Jul 01 05:11:53 2023

Dual Induction Calibration Report

Serial-Model: FW1410-55-Probe  
 Surface Cal Performed: Thu Jun 15 08:08:21 2023  
 Downhole Cal Performed: Tue Feb 19 11:44:24 2019  
 After Survey Verification Performed: Tue Feb 19 11:44:27 2019

Surface Calibration

Loop:	Readings				References			Results	
	Air	Loop			Air	Loop		m	b
Deep	0.011	0.656	V	1.000	400.000	mmho/m	550.000	-7.000	
Medium	-0.000	0.731	V	1.000	464.000	mmho/m	530.000	-10.000	
Internal:	Zero	Cal		Zero	Cal		m	b	
Deep	0.007	0.649	V	0.000	400.000	mmho/m	623.784	-4.595	
Medium	0.004	0.743	V	0.000	464.000	mmho/m	627.284	-2.251	

Downhole Calibration

	Readings				References			Results	
	Zero	Cal			Zero	Cal		m'	b'
Deep	-0.824	395.917	mmho/m	-0.976	397.550	mmho/m	1.004	-0.149	
Medium	3.565	471.327	mmho/m	3.468	471.590	mmho/m	1.001	-0.099	
LL3		7.503	V		1500.000	Ohm-m			
		0.001	V		20.000	Ohm-m			
		-7.481	V		3745.000	mmho-m			

After Survey Verification

	Readings				Targets			Results	
	Zero	Cal			Zero	Cal		m'	b'
Deep	0.000	0.000	mmho/m	-0.824	395.917	mmho/m	1.000	0.000	
Medium	0.000	0.000	mmho/m	3.565	471.327	mmho/m	1.000	0.000	
LL3		0.000	Ohm-m		1500.000	Ohm-m			
		0.000	Ohm-m		20.000	Ohm-m			
		0.000	mmho-m		3745.000	mmho-m			

Litho Density Calibration Report

Serial: 140704  
 Model: V4\_10P  
 Source Number: 74GBq-19

	Background	Aluminum	Magnesium		
Window 1	521.46	5212.91	23528.37	cps	
Window 2	43.81	1175.90	6160.42	cps	
Window 4	226.45	1217.97	4891.35	cps	
Window 5	519.17	8959.34	17037.10	cps	
Window 6	39.35	1453.85	2926.68	cps	
Window 8	253.66	2919.24	5361.51	cps	
Bulk Density	-	2.6020	1.6830	g/cc	
Pe	-	3.0000	2.5070	b/e	
LS Alpha:	: -1.7699	SS Alpha:	: -0.7448	LS CPE:	: 1.1844
LS Beta:	: 101708.6271	SS Beta:	: 19263.5258	SS CPE:	: 1.5835

Before Survey Background Counts Verification			Performed: Wed Dec 31 18:00:00 1969	
Window 1	0.00	cps		
Window 2	0.00	cps		
Window 4	0.00	cps		
Window 5	0.00	cps		
Window 6	0.00	cps		
Window 8	0.00	cps		

After Survey Background Counts Verification			Performed: Wed Dec 31 18:00:00 1969	
Window 1	0.00	cps		
Window 2	0.00	cps		
Window 4	0.00	cps		
Window 5	0.00	cps		
Window 6	0.00	cps		
Window 8	0.00	cps		

Lithodensity Caliper Calibration			Performed: Fri May 12 10:26:47 2023		
Results	Readings	References (in)		Gain	Offset
Low	High	Low	High		
7228.5	10151.9	8.0	14.0	0.0	-7.4

Before Survey Caliper Verification			Performed:		
	Reference	Reading			
Caliper (in)	_____	_____			

After Survey Caliper Verification			Performed:		
	Reference	Reading			
Caliper (in)	_____	_____			

Compensated Neutron Calibration Report

Serial Number:	080621PMC
Tool Model:	NABORS

PRE-SURVEY VERIFICATION

Detector	Readings	Measured	Target
Short Space	cps		
Long Space	cps	pu	pu

POST-SURVEY VERIFICATION

Detector	Readings	Measured	Target
Short Space	cps		
Long Space	cps	pu	pu

Gamma Ray Calibration Report

Serial Number:	7		
Tool Model:	Probe1		
Performed:	Sun Apr 02 09:22:40 2023		
Calibrator Value:	1.0	GAPI	
Background Reading:	0.0	cps	
Calibrator Reading:	1.0	cps	
Sensitivity:	0.4000	GAPI/cps	