



MIDWEST SURVEYS
 LOGGING - PERFORATING - CONSULTING SERVICES
 P.O. Box 68, Osawatomie, KS 66064
 913 : 755 - 2128

GAMMA RAY / NEUTRON / CCL

File No.

Company **Bobcat Oilfield Services, Inc.**

Well **Wendt No. 17-14**

Field **Goodrich - Parker**

County **Linn** State **Kansas**

Location **1815 FSL & 165th FEL
NE-SE-NE-SE**

Other Services
Perforate

Sec 27 Twp 19S Rge 22E
 Permanent Datum GL Elevation N/A
 Log Measured From GL
 Drilling Measured From GL

Date **03-19-2014**

Run Number **One**

Depth Driller **641.0**

Depth Logger **623.3**

Bottom Logged Interval **622.3**

Top Log Interval **20.0**

Fluid Level **Full**

Type Fluid **Water**

Density / Viscosity **NA**

Salinity - PPM Cl **NA**

Max Recorded Temp **NA**

Estimated Cement Top **0.0**

Equipment No. **107** Location **Osawatomie**

Recorded By **Steve Windisch**

Valveshed By **Bob Eberhart**

BORE-HOLE RECORD

CASING RECORD

NO	BIT	FROM	TO	SIZE	WGT.	FROM	TO
One	8.75"	0.0	20.0	6.00"	15.0#	0.0	20.0
Two	5.625"	20.0	641.0	2.875"	6.5#	0.0	625.0

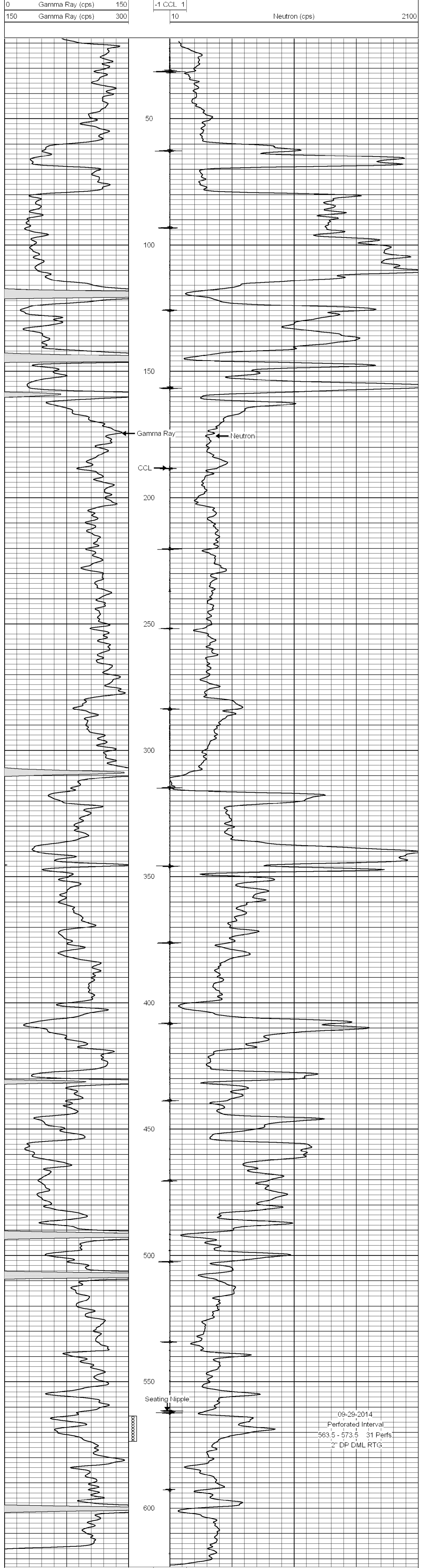
<<< Fold Here >>>

All interpretations are opinions based on inferences from electrical or other measurements and we cannot and do not guarantee the accuracy or correctness of any interpretation, and we shall not, except in the case of gross or willful negligence on our part, be liable or responsible for any loss, costs, damages, or expenses incurred or sustained by anyone resulting from any interpretation made by any of our officers, agents or employees. These interpretations are also subject to our general terms and conditions set out in our current Price Schedule.

Comments

Drilling Contractor :
Dale Jackson Production Company

Database File: wendt17-14.db
 Dataset Pathname: pass1
 Presentation Format: gr-n-ccl
 Dataset Creation: Wed Mar 19 13:59:55 2014
 Charted by: Depth in Feet scaled 1:240



09-29-2014
 Perforated Interval
 563.5 - 573.5 31 Perfs
 2" DP DML RTG