



**PIONEER**

Pioneer Energy Services

**Borehole Compensated  
Sonic Log**

API No.	15-109-21400-00-00
Company	BLACK TEA OIL, LLC
Well	WOOD B #1
Field	ANTELOPE SPRINGS
County	LOGAN
State	KANSAS
Location	1260' FSL & 1240' FEL
Sec: 16	Twp: 14S Rge: 35W
Other Services CNL/CDL MEL/DIL	

Permanent Datum	GROUND LEVEL	Elevation 3177
Log Measured From	KELLY BUSHING	9 Ft. Above Perm. Datum
Drilling Measured From	KELLY BUSHING	
Date	5/7/2015	

Run Number	TWO
Type Log	BHC Sonic
Depth Driller	4870
Depth Logger	4871
Bottom Logged Interval	4860
Top Logged Interval	250
Type Fluid In Hole	CHEMICAL
Salinity, PPM CL	10000
Density	9.1
Level	FULL
Max. Rec. Temp. F	125
Operating Rig Time	5 HOURS
Equipment -- Location	91 Hays
Recorded By	D. SCHMIDT
Witnessed By	ANTHONY STEINKE

Borehole Record		Casing Record					
Run No	Bit	From	To	Size	Wgt.	From	To
One	12.25	00	264	8.625	23#	00	264
Two	7.875	264	TD				

<<< Fold Here >>>

All interpretations are opinions based on inferences from electrical or other measurements and we cannot and do not guarantee the accuracy or correctness of any interpretation, and we shall not, except in the case of gross or willful negligence on our part, be liable or responsible for any loss, costs, damages, or expenses incurred or sustained by anyone resulting from any interpretation made by any of our officers, agents or employees. These interpretations are also subject to our general terms and conditions set out in our current Price Schedule.

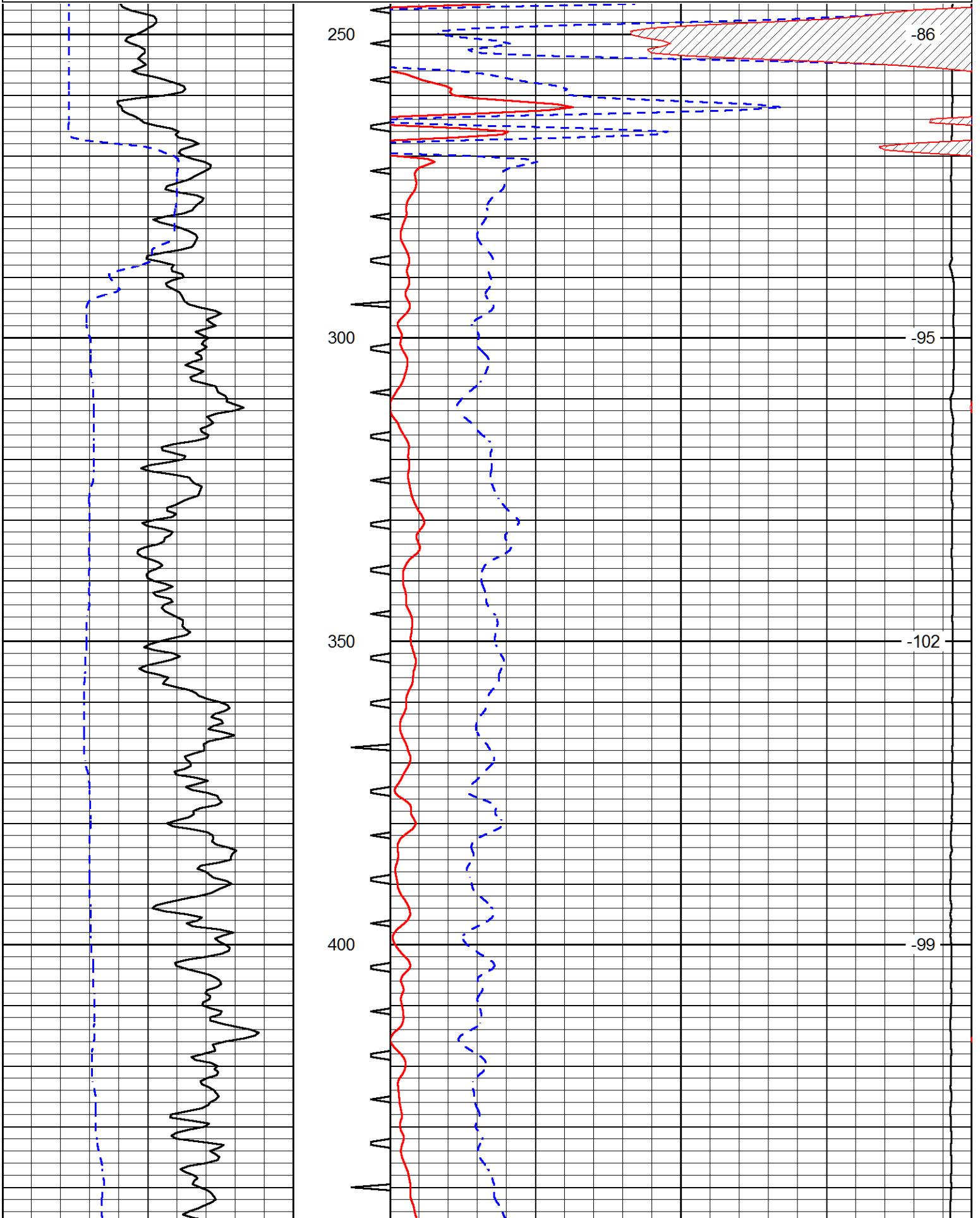
Comments

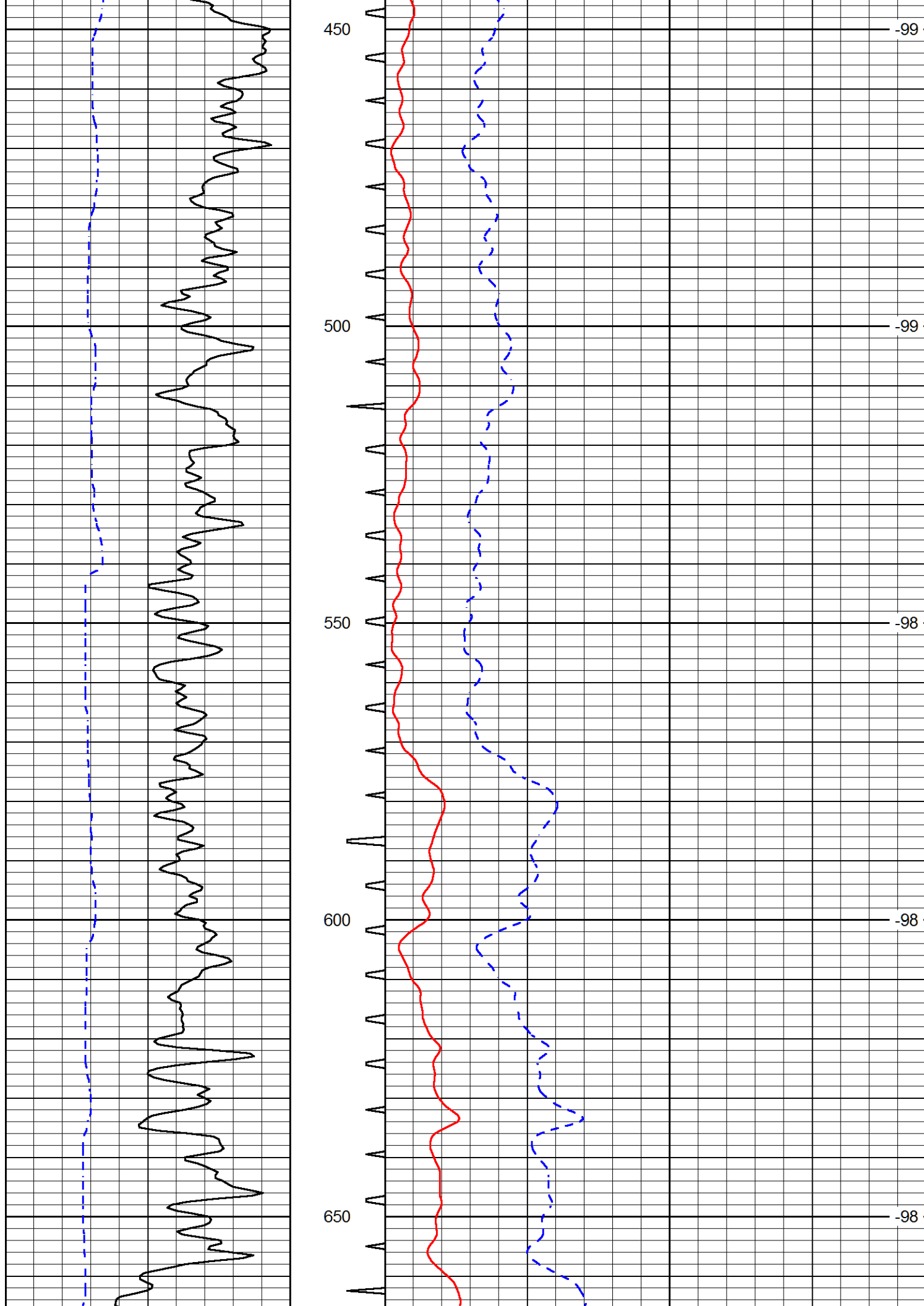
Thank you for using Pioneer Energy Services  
 785.625.3858  
 RUSSELL SPRINGS,  
 WEST ON HWY 25 TO 240 RD,  
 SOUTH TO JAYHAWK RD, 1 EAST,  
 NORTH INTO

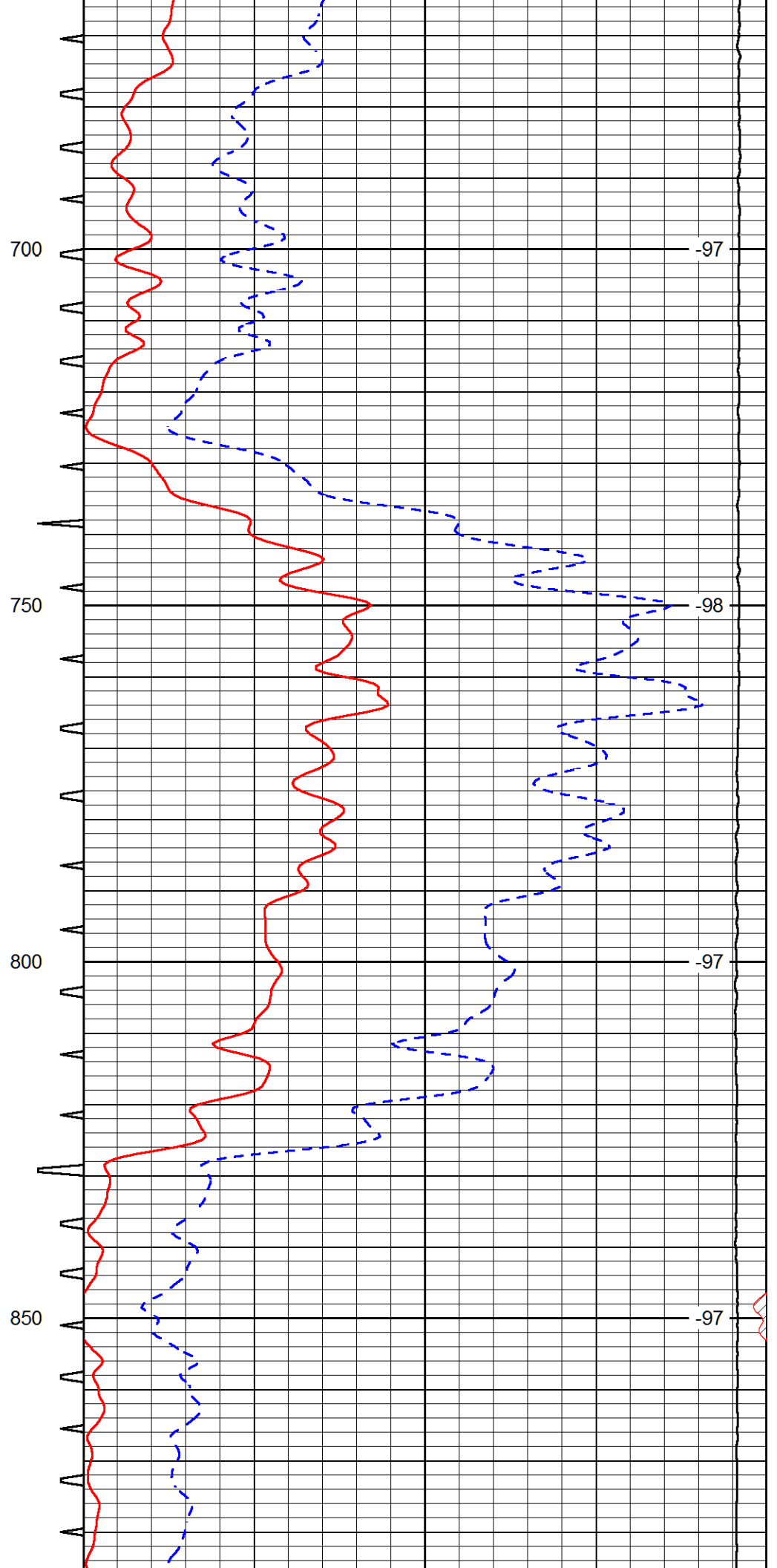
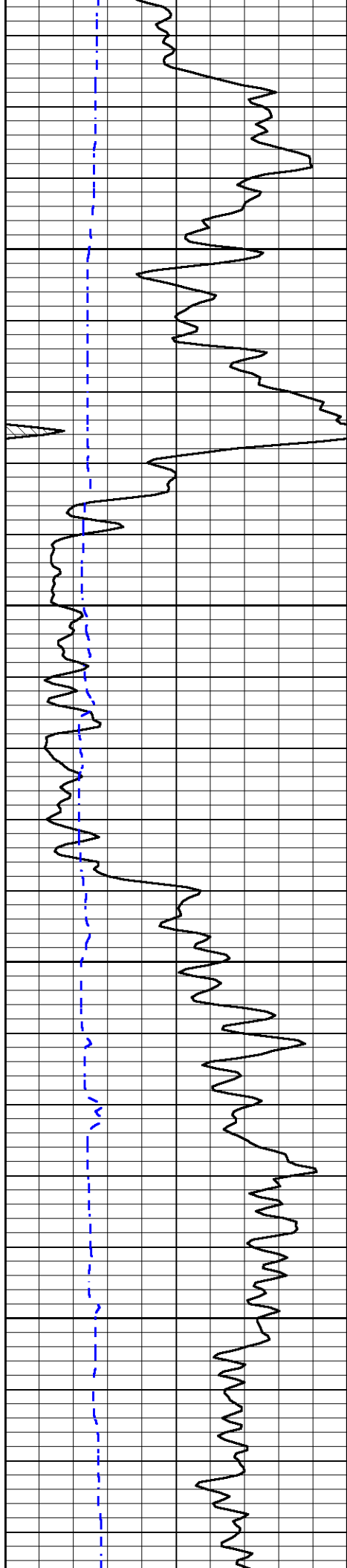
Database File	black tea_wood_b_1hd.db
Dataset Pathname	DIL/btstack
Presentation Format	sonic
Dataset Creation	Thu May 07 12:15:31 2015
Charted by	Depth in Feet scaled 1:240

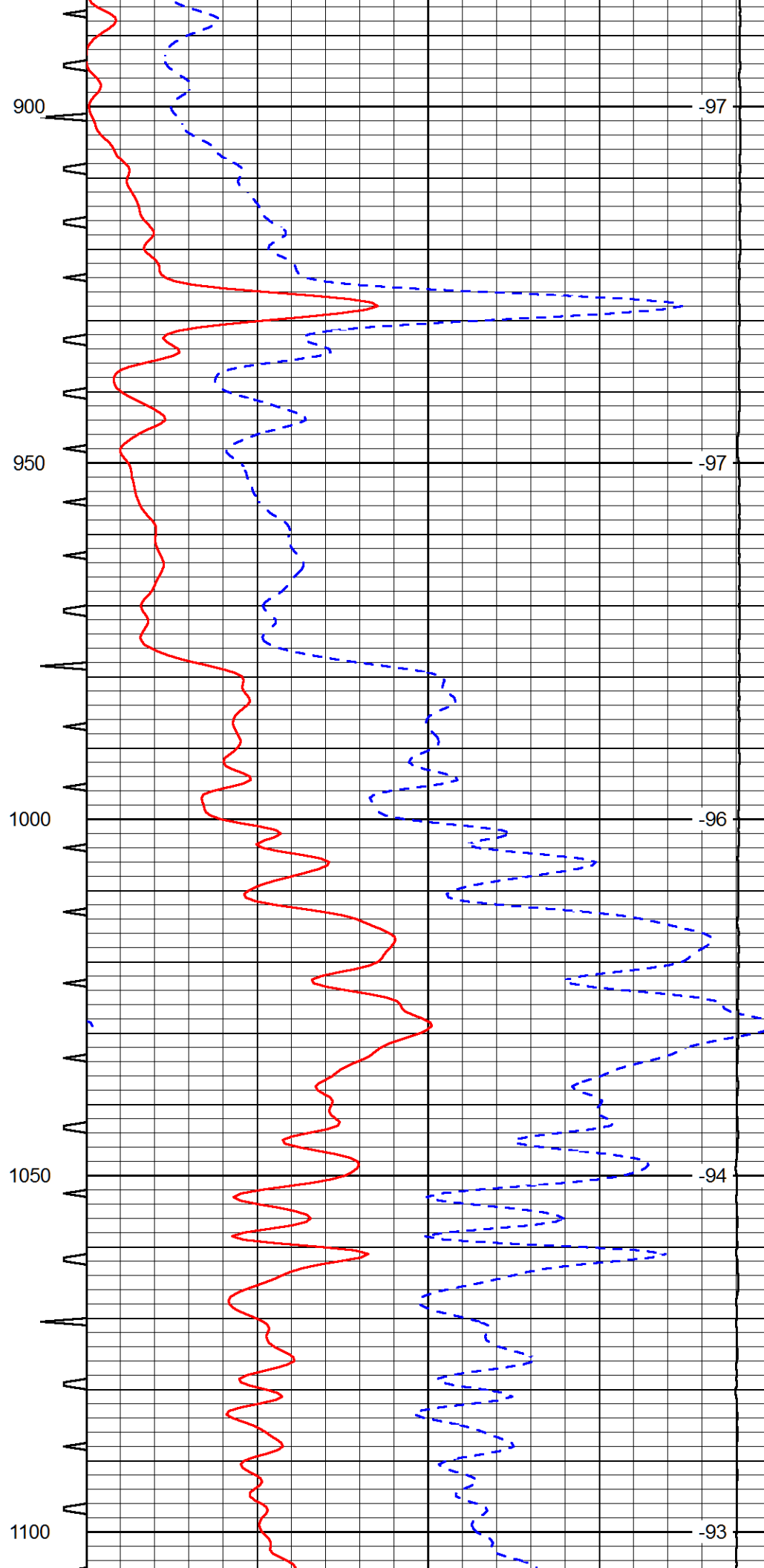
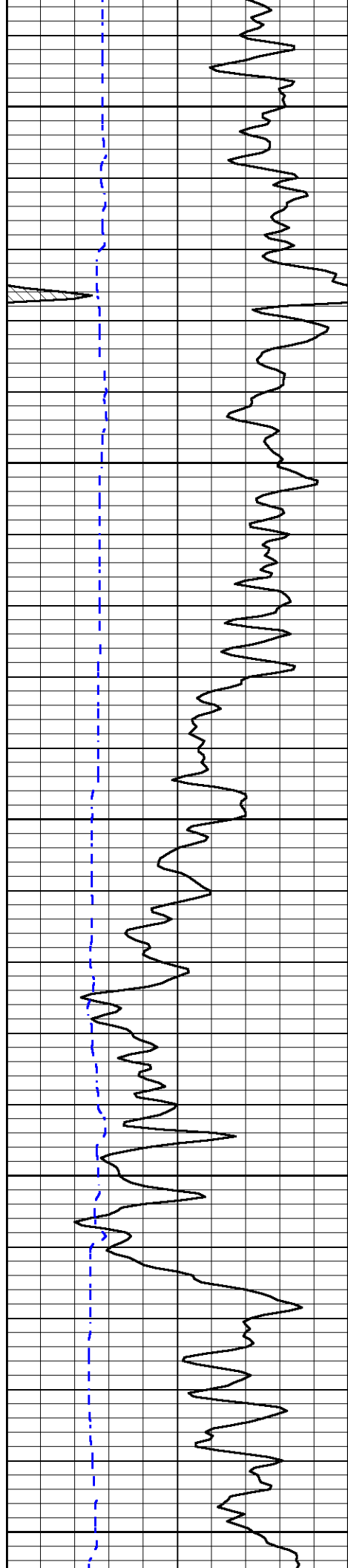
0	Gamma Ray	150	Sonic Int	140	Delta Time (usec/ft)	40
150	Gamma Ray	300	5	0	Sonic Porosity	-10
6	dCAL (GAPI)	16		15000	LTEN (lb)	0

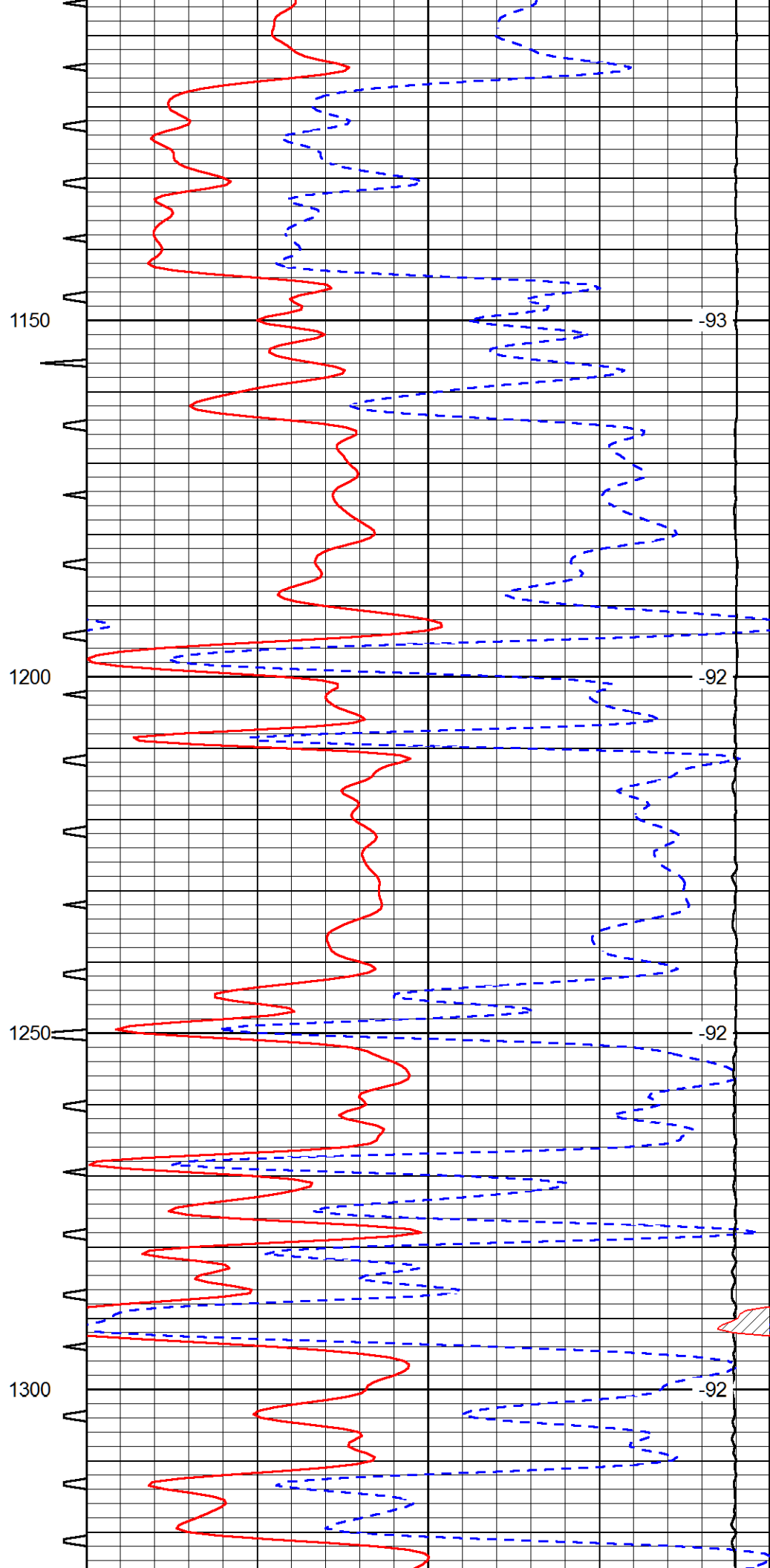
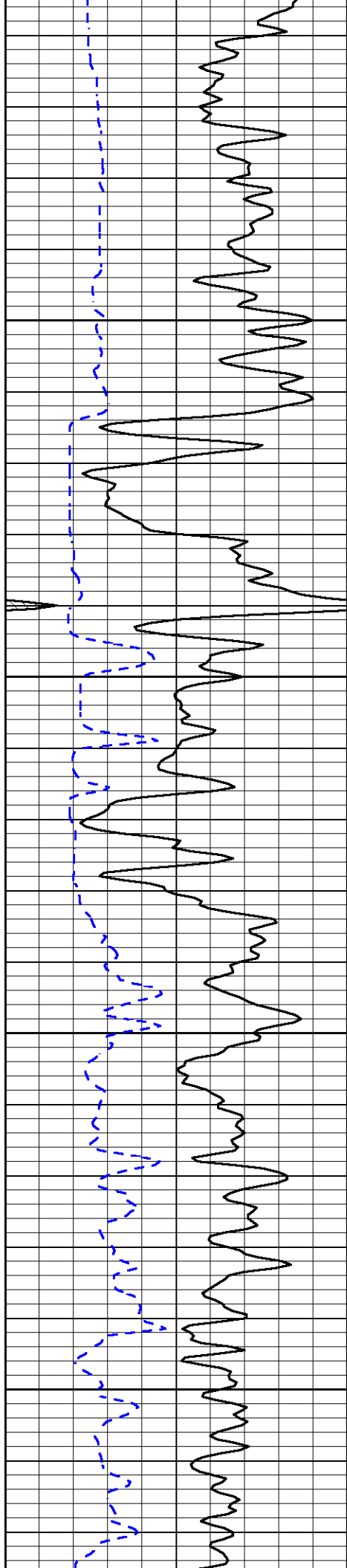
LSPD

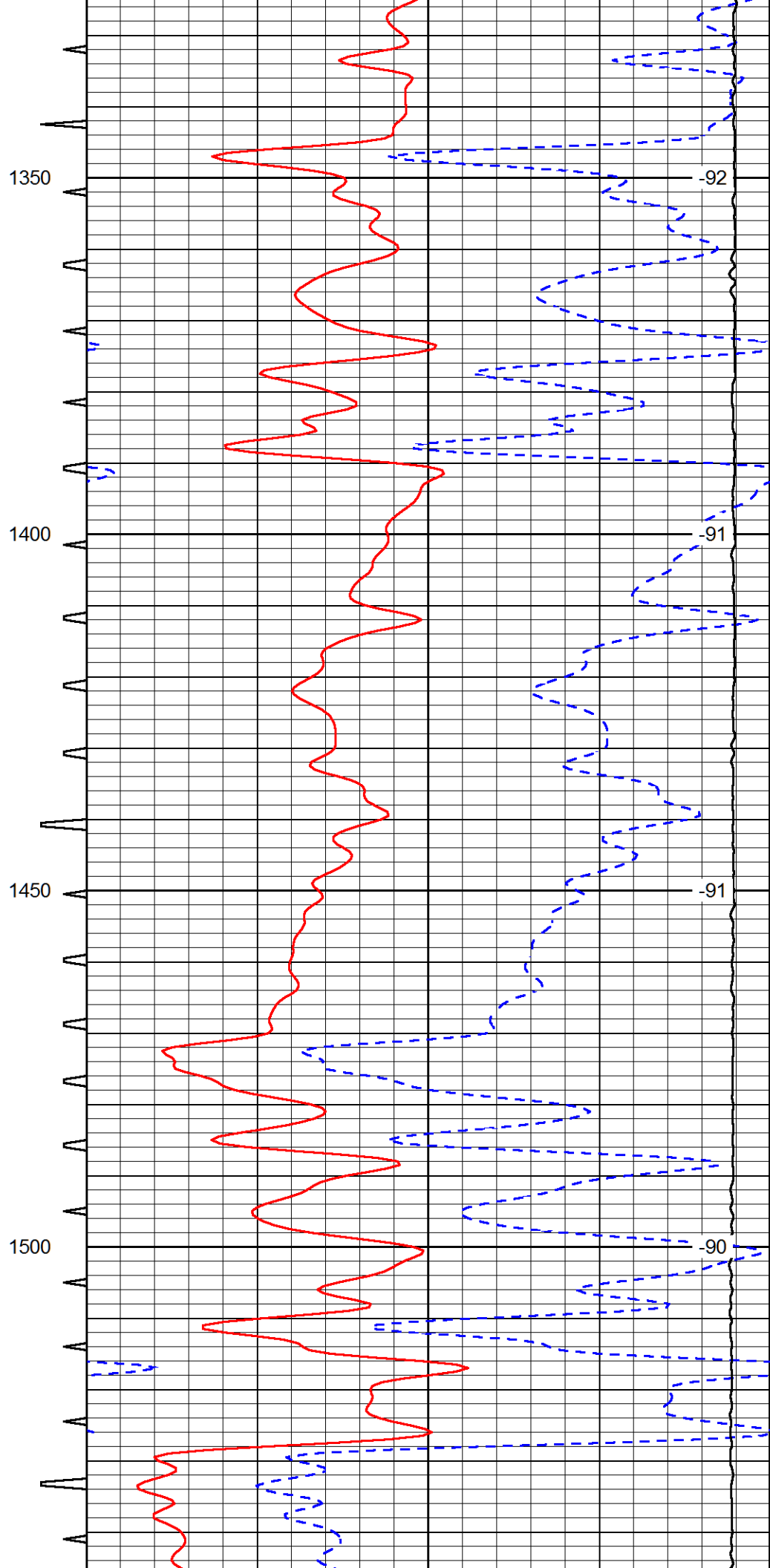
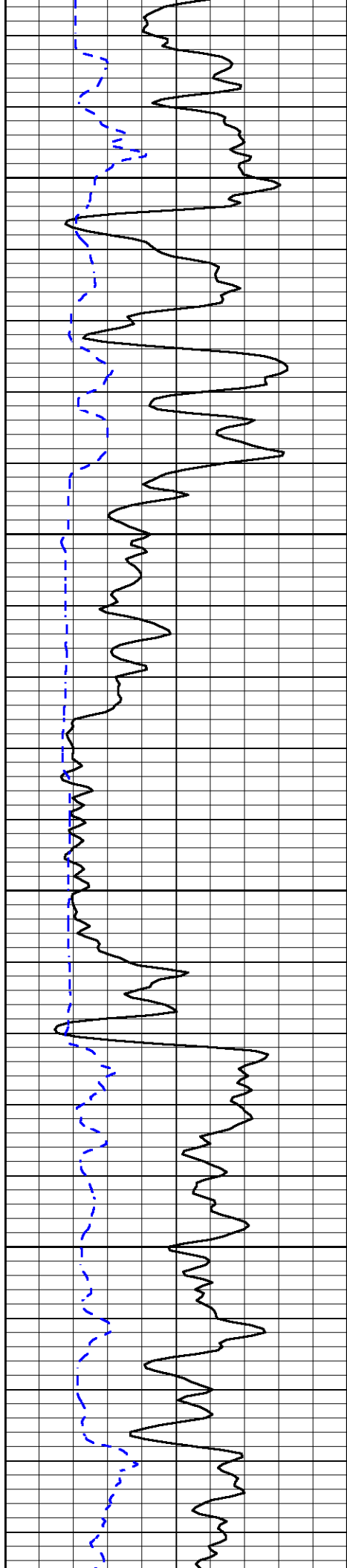


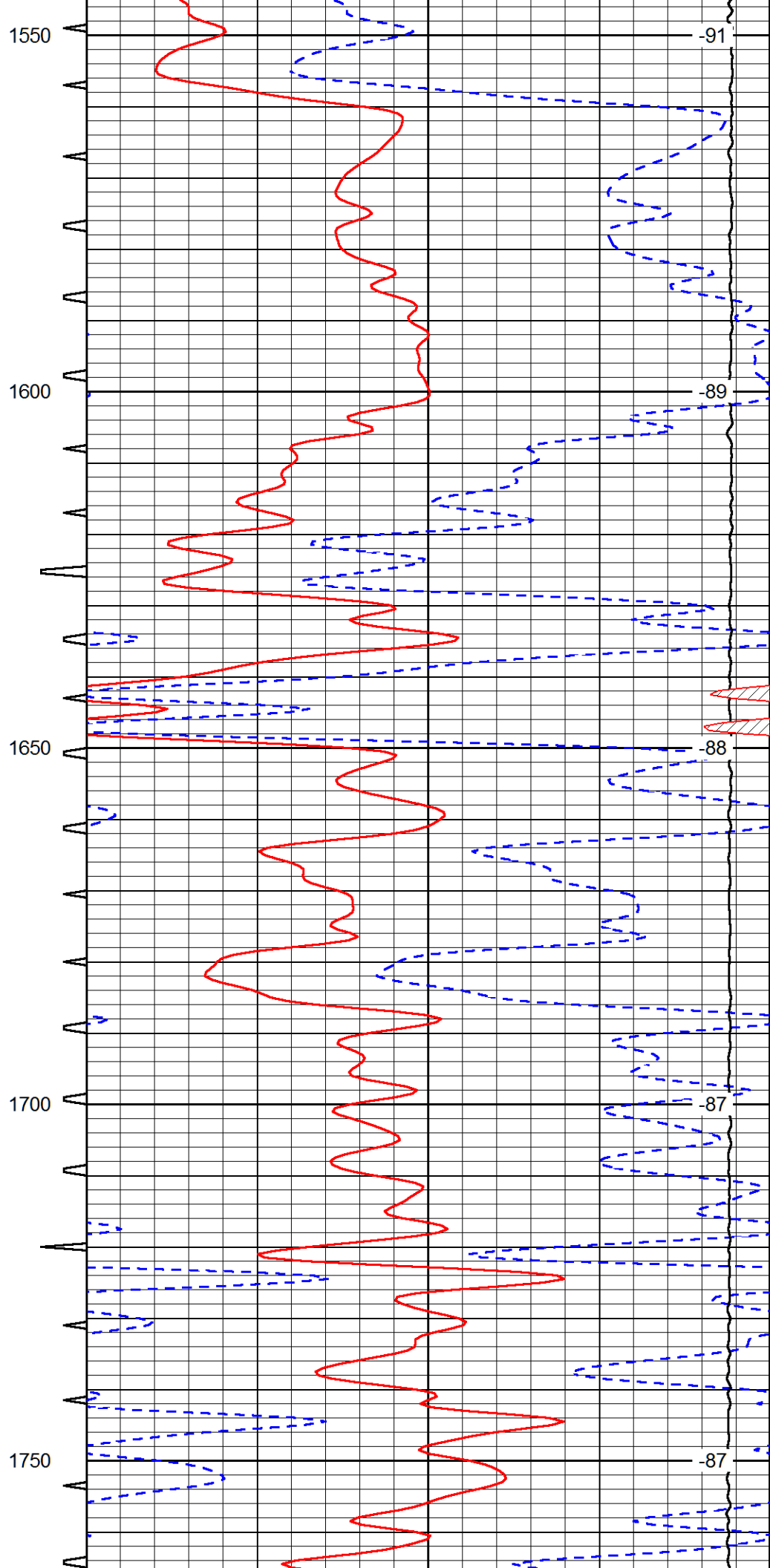
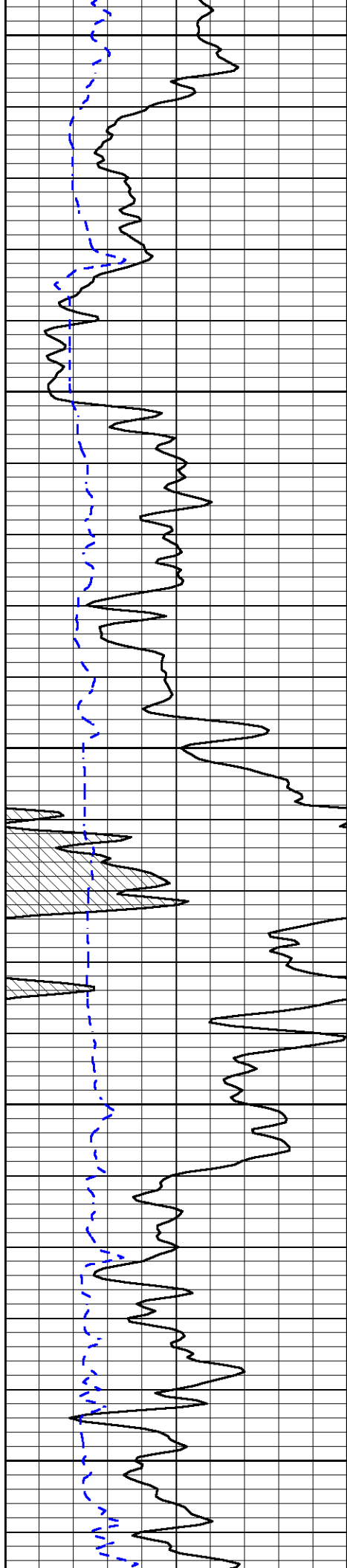


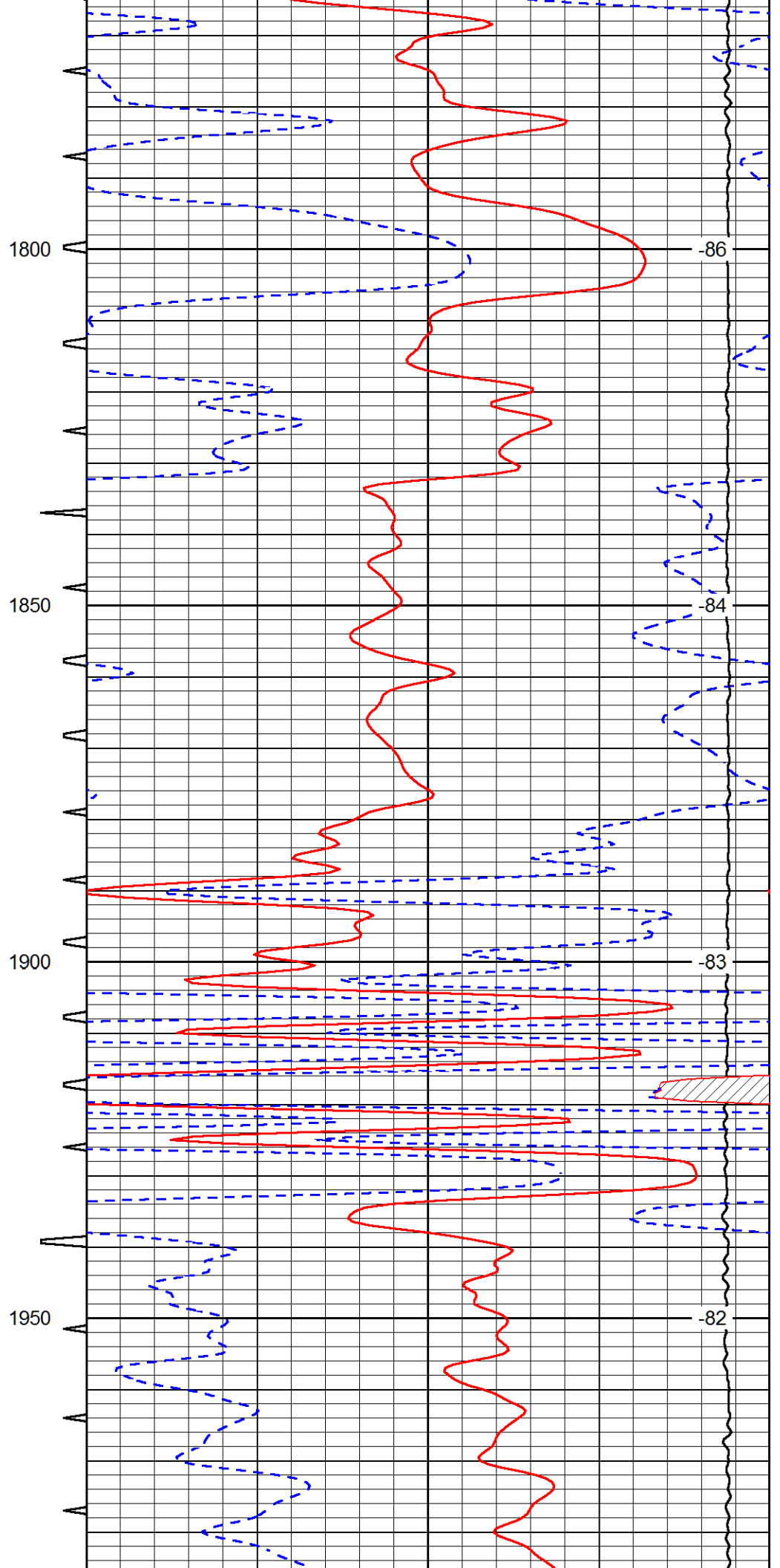
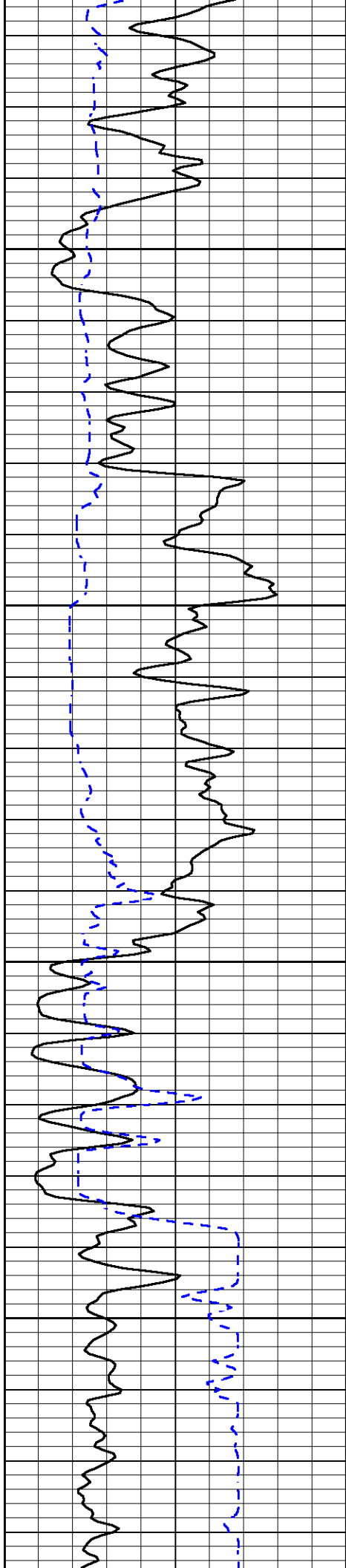


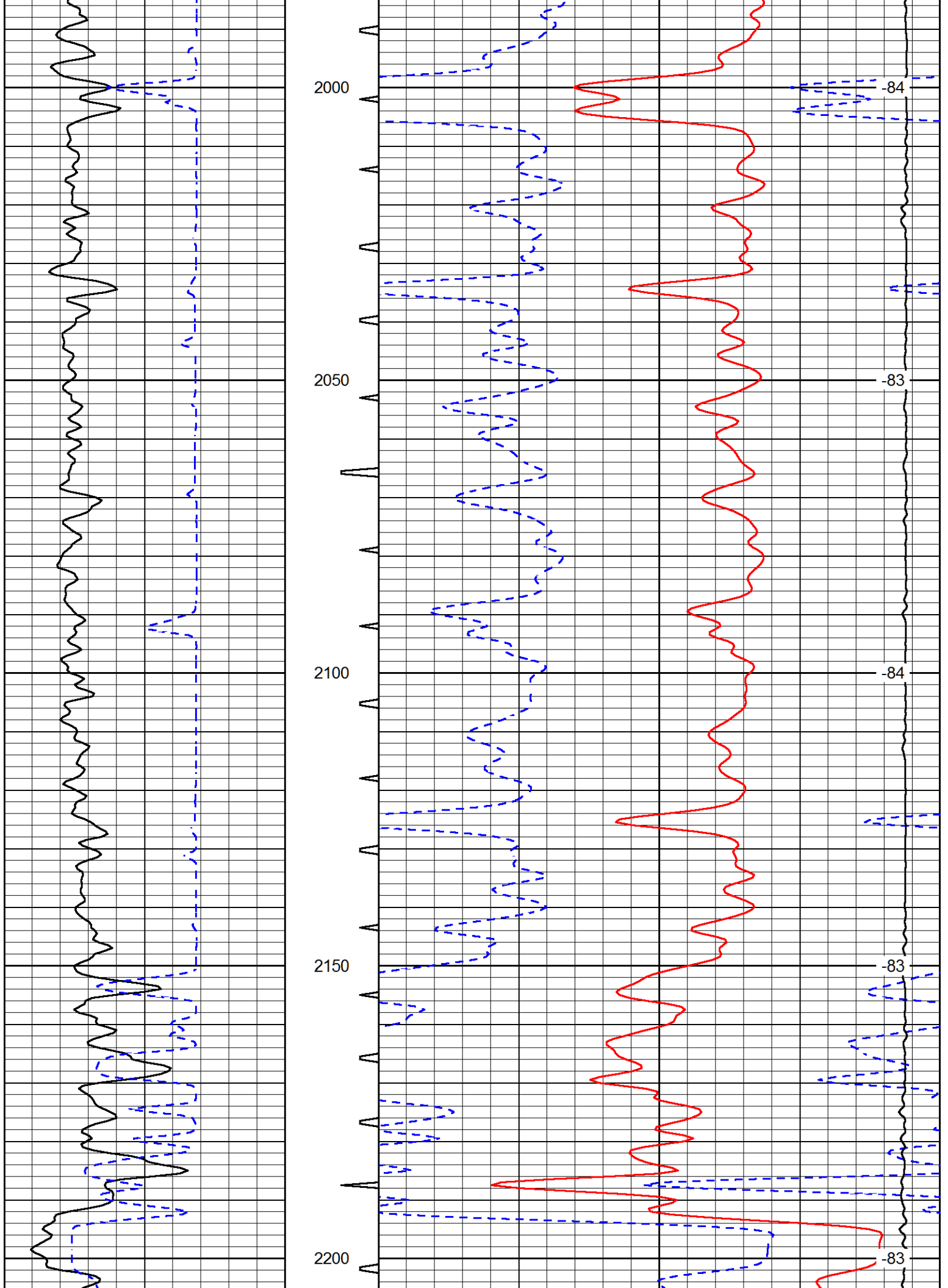


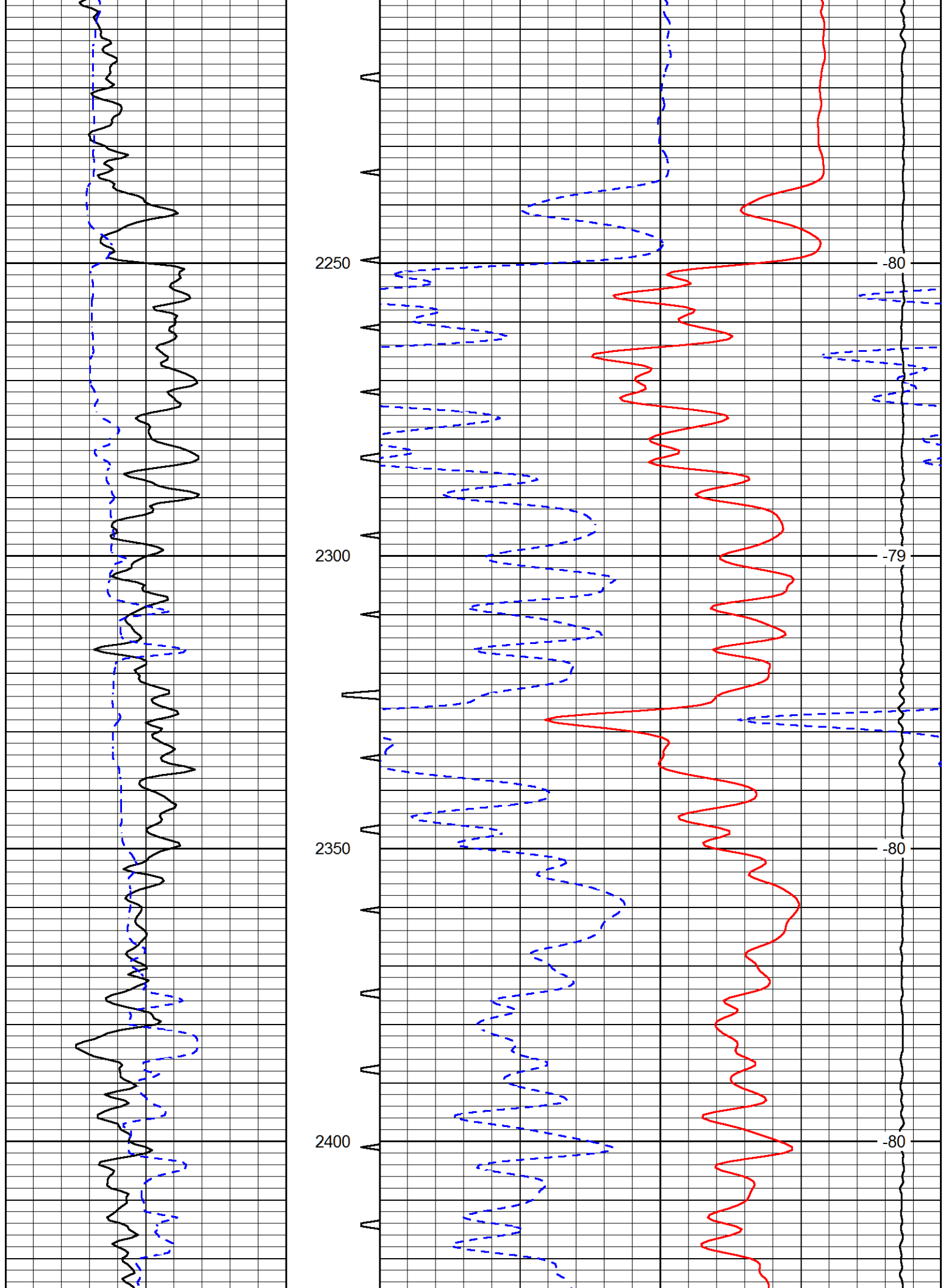


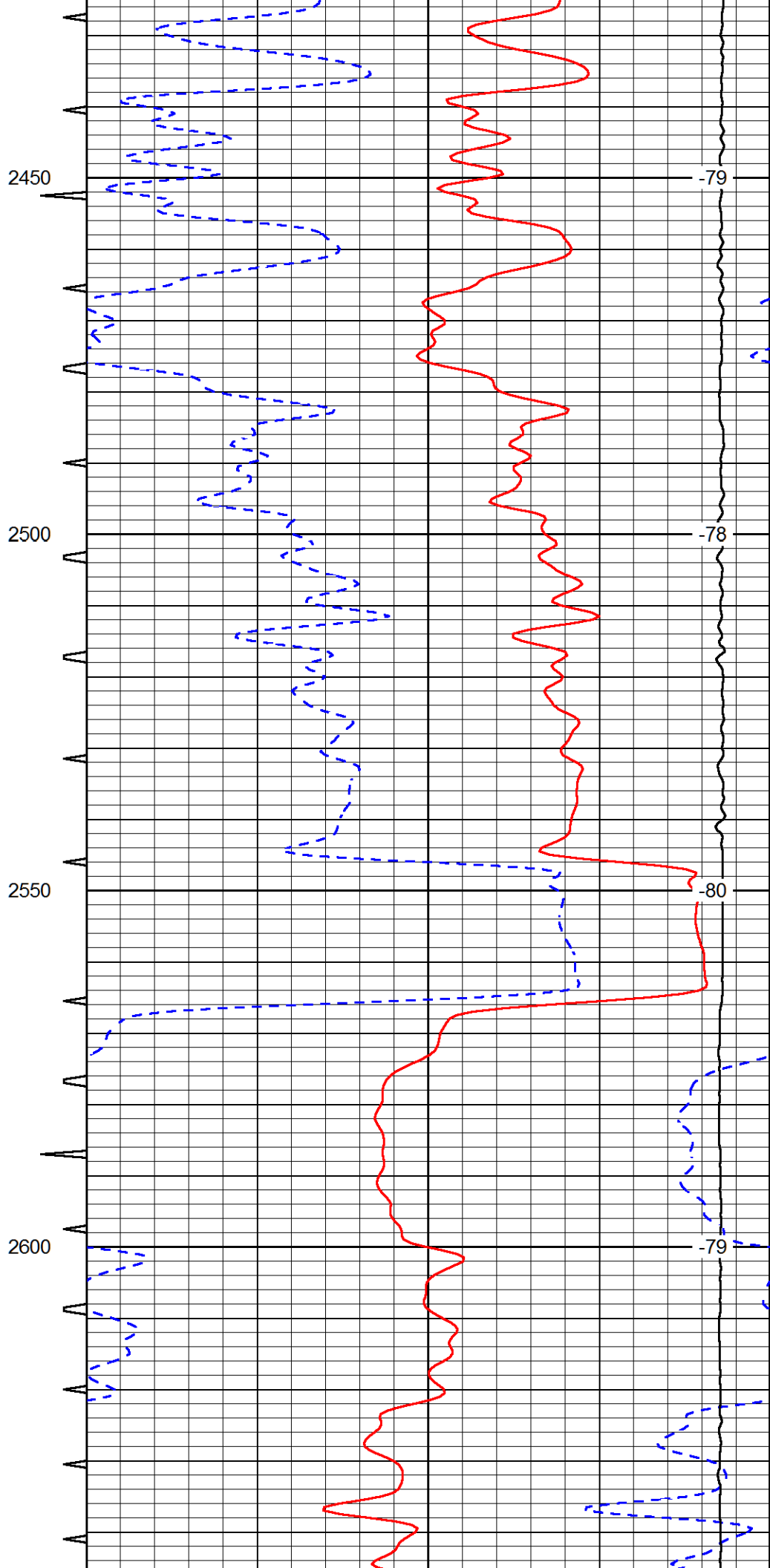
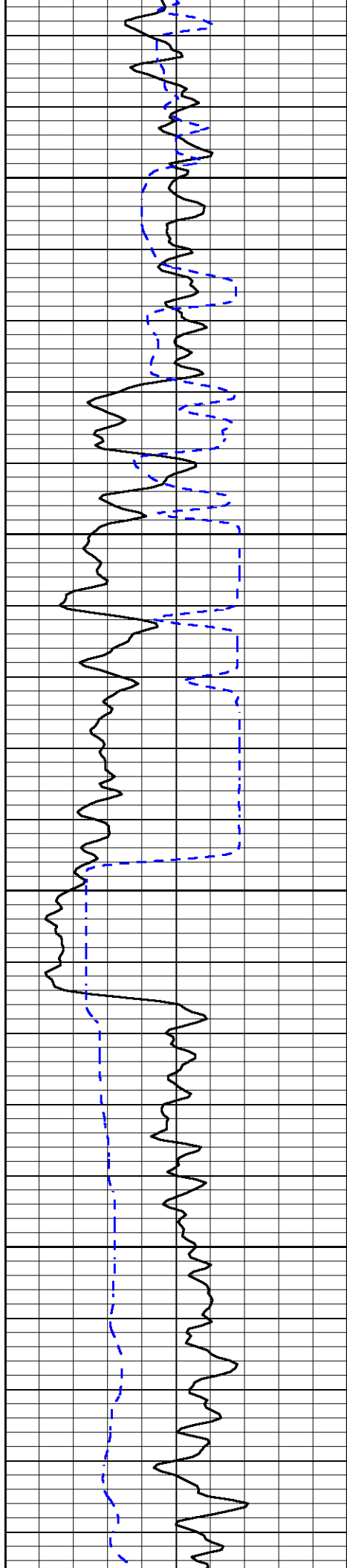


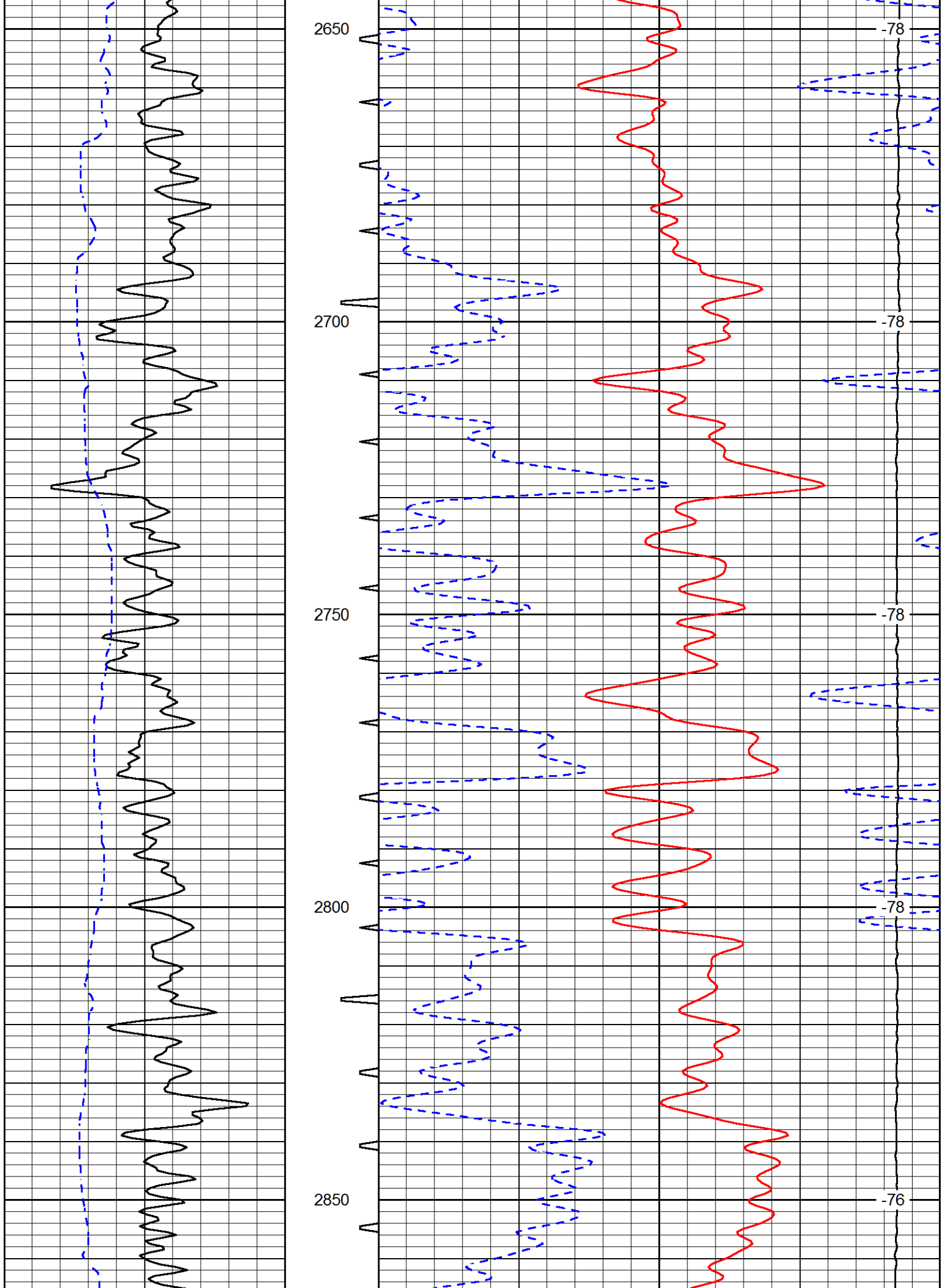


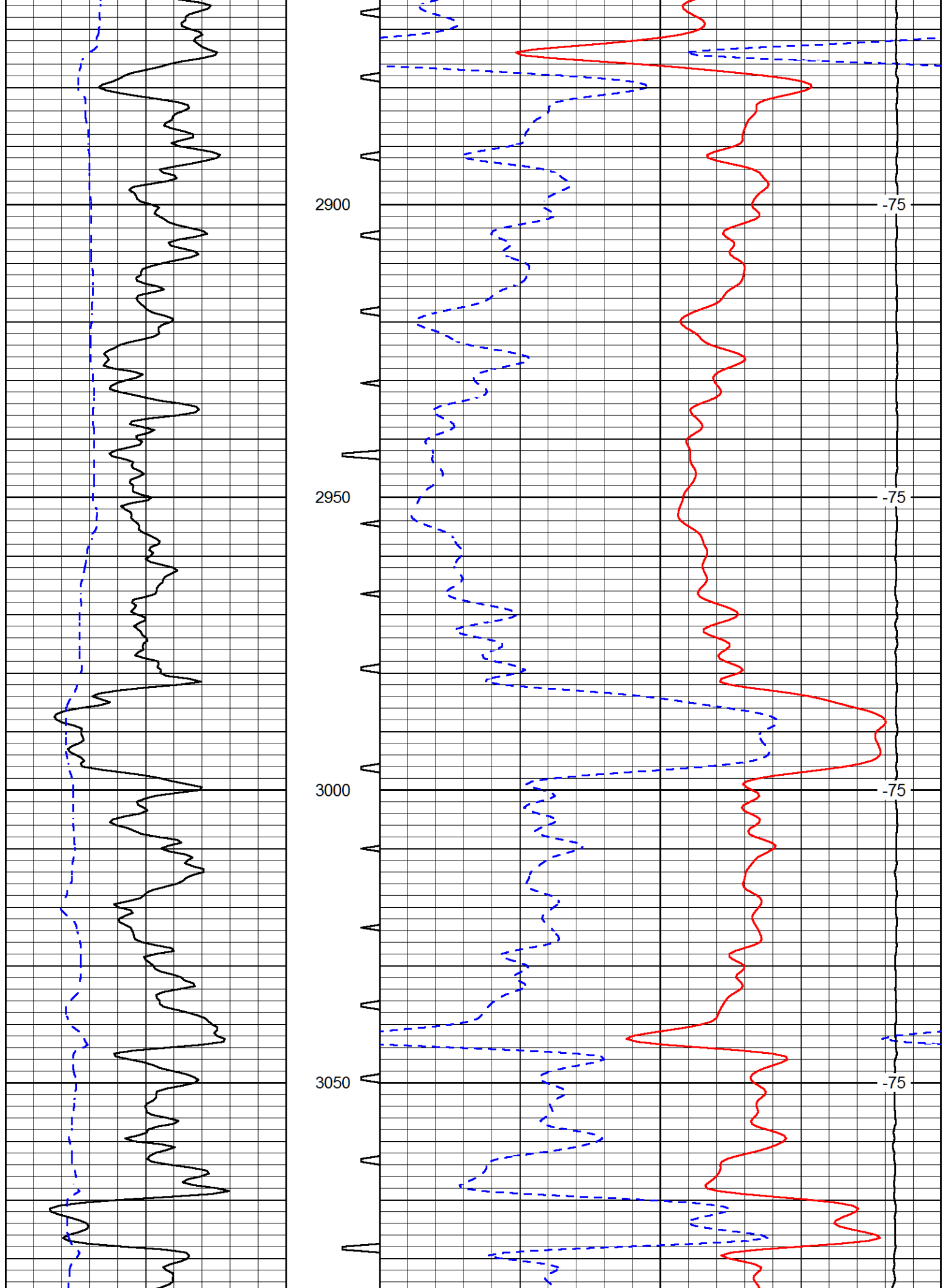


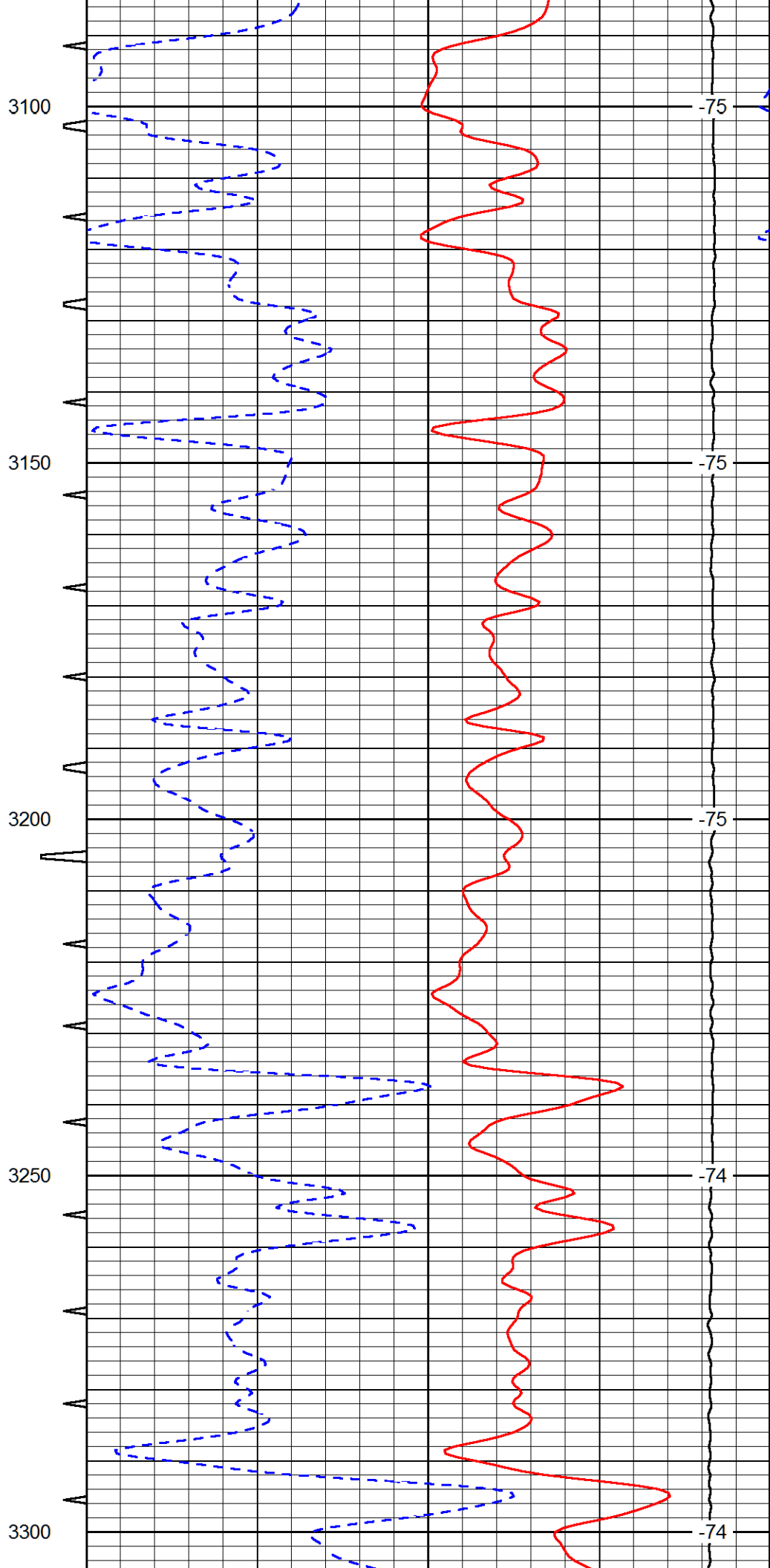
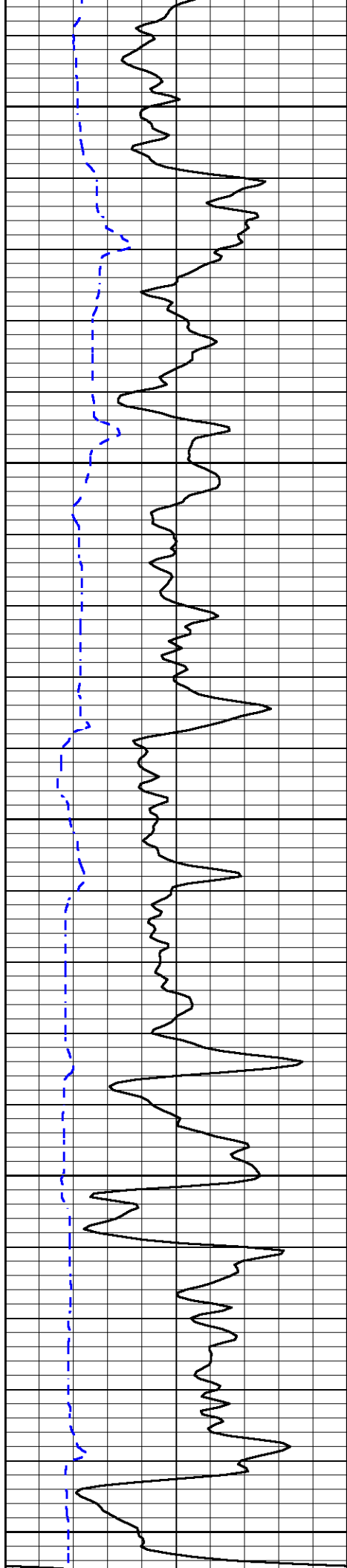


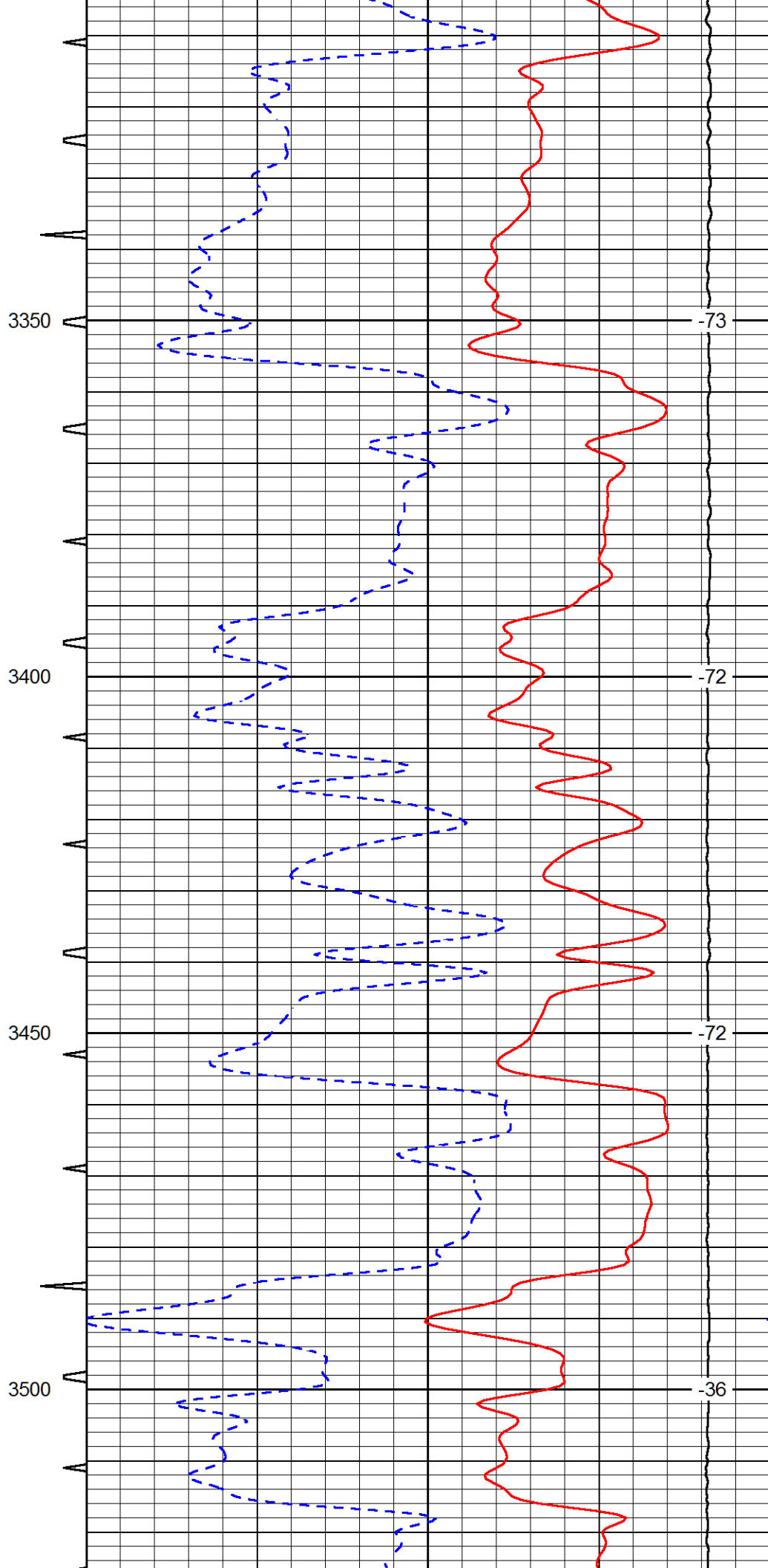
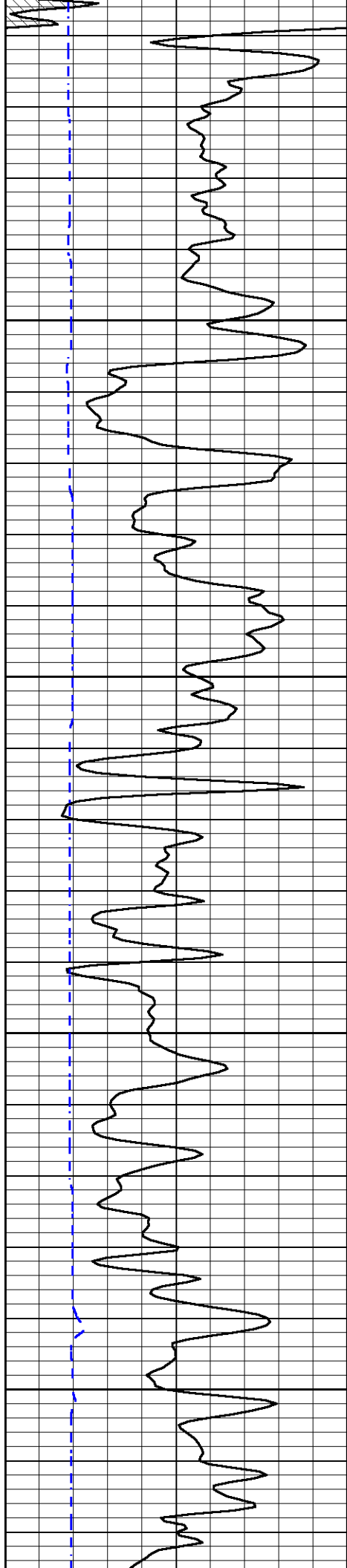


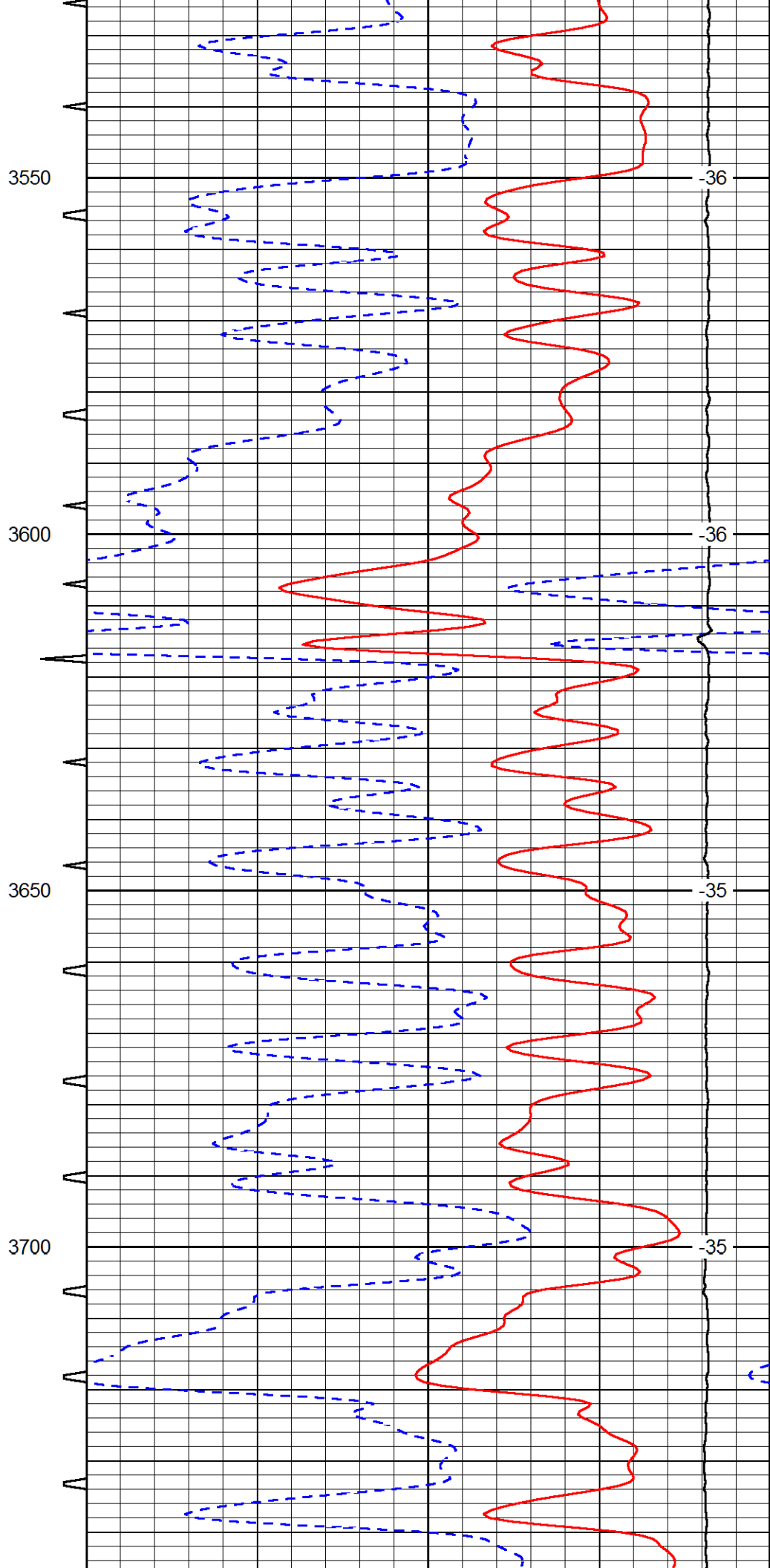
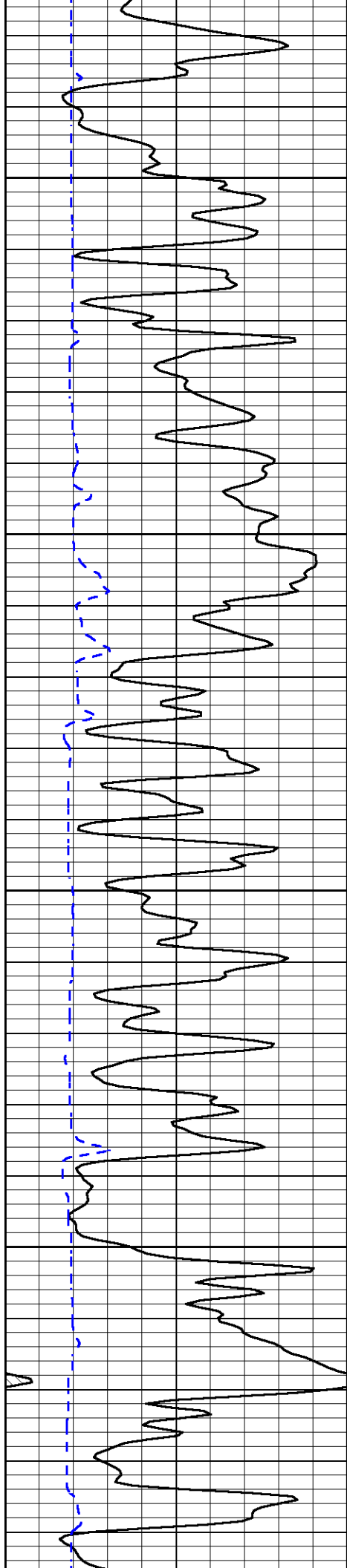


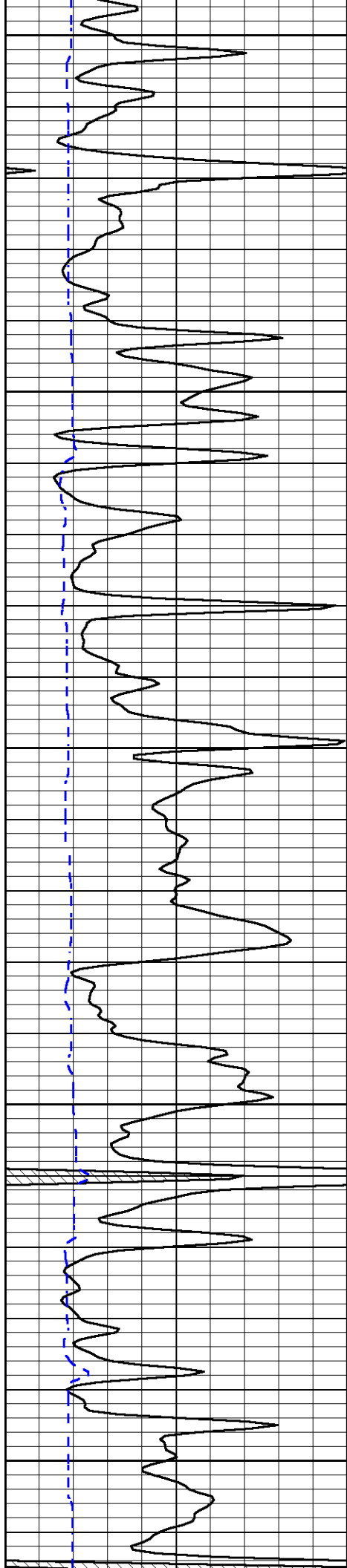












3750

3800

3850

3900

3950

-36

-36

-35

-34

-34

