



Pioneer Energy Services

Dual Induction Log

15-109-21400-00-00

Company	BLACK TEA OIL, LLC	Location 1260' FSL & 1240' FEL	Other Services CNL/CDL MEL/BHCS
Well	WOOD B #1		
Field	ANTELOPE SPRINGS	Sec: 16 Twp: 14S Rge: 35W	Elevation K.B. 3186 D.F. 3177 G.L. 3177
County	LOGAN State		
			KANSAS

Permanent Datum	GROUND LEVEL	Elevation 3177
Log Measured From	KELLY BUSHING	9 Ft. Above Perm. Datum
Drilling Measured From	KELLY BUSHING	
Date	5/7/2015	
Run Number	ONE	
Depth Driller	4870	
Depth Logger	4871	
Bottom Logged Interval	4870	
Top Log Interval	250	
Casing Driller	8.625 @ 264	
Casing Logger	267	
Bit Size	7.875	
Type Fluid in Hole	CHEMICAL	
Salinity, ppm CL	10000	
Density / Viscosity	9.1 54	
pH / Fluid Loss	9.5 7.2	
Source of Sample	Flowline	
Rm @ Meas. Temp	0.55 @ 58	
Rmf @ Meas. Temp	0.41 @ 58	
Rmc @ Meas. Temp	0.74 @ 58	
Source of Rmf / Rmc	Charts	
Rm @ BHT	0.26 @ 125	
Operating Rig Time	5 HOURS	
Max Rec. Temp. F	125	
Equipment Number	91	
Location	HAYS	
Recorded By	D. SCHMIDT	
Witnessed By	ANTHONY STEINKE	

<<< Fold Here >>>

All interpretations are opinions based on inferences from electrical or other measurements and we cannot and do not guarantee the accuracy or correctness of any interpretation, and we shall not, except in the case of gross or willful negligence on our part, be liable or responsible for any loss, costs, damages, or expenses incurred or sustained by anyone resulting from any interpretation made by any of our officers, agents or employees. These interpretations are also subject to our general terms and conditions set out in our current Price Schedule.

Comments

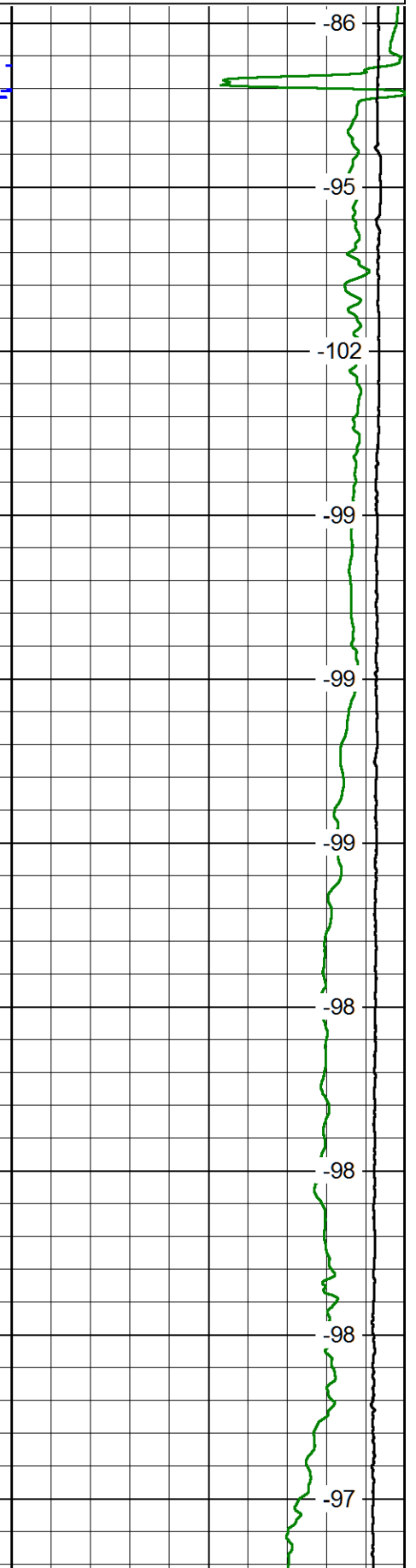
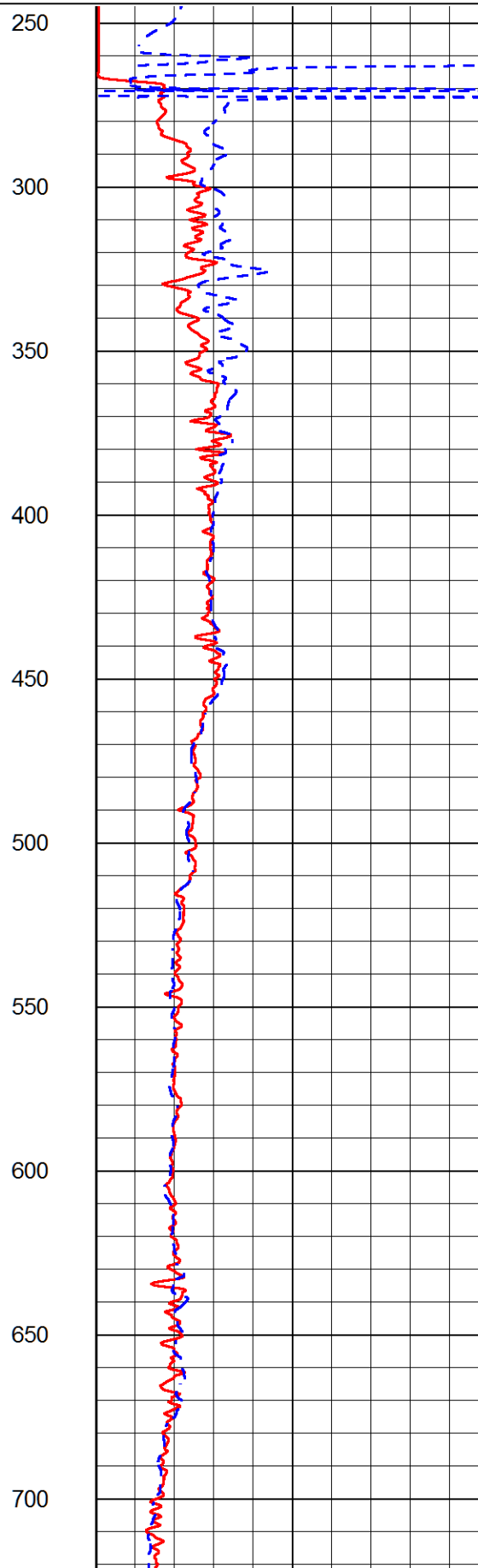
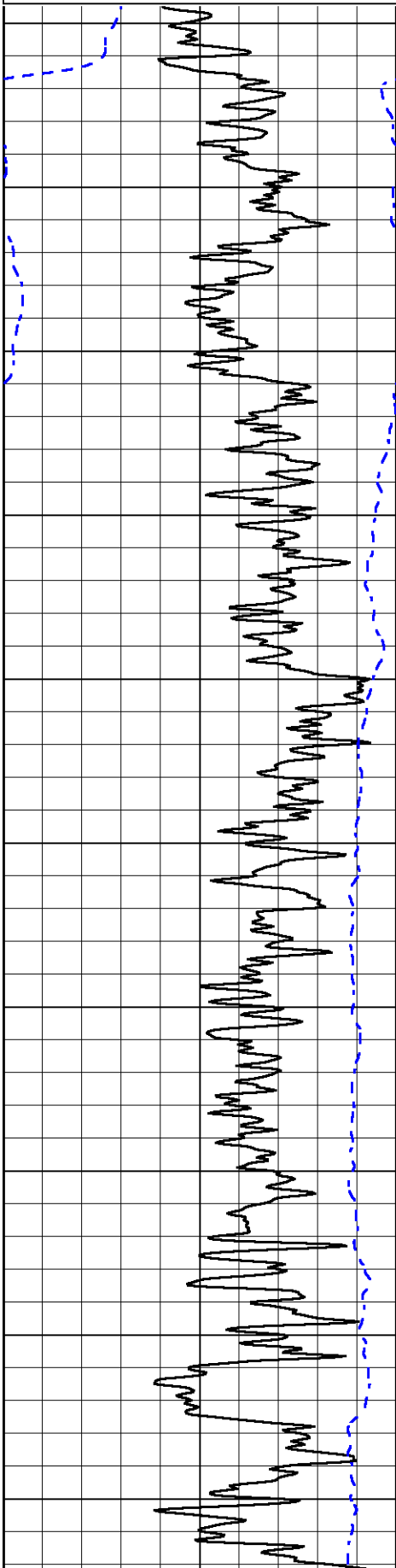
Thank you for using Pioneer Energy Services
 785.625.3858
 RUSSELL SPRINGS,
 WEST ON HWY 25 TO 240 RD,
 SOUTH TO JAYHAWK RD, 1 EAST,
 NORTH INTO

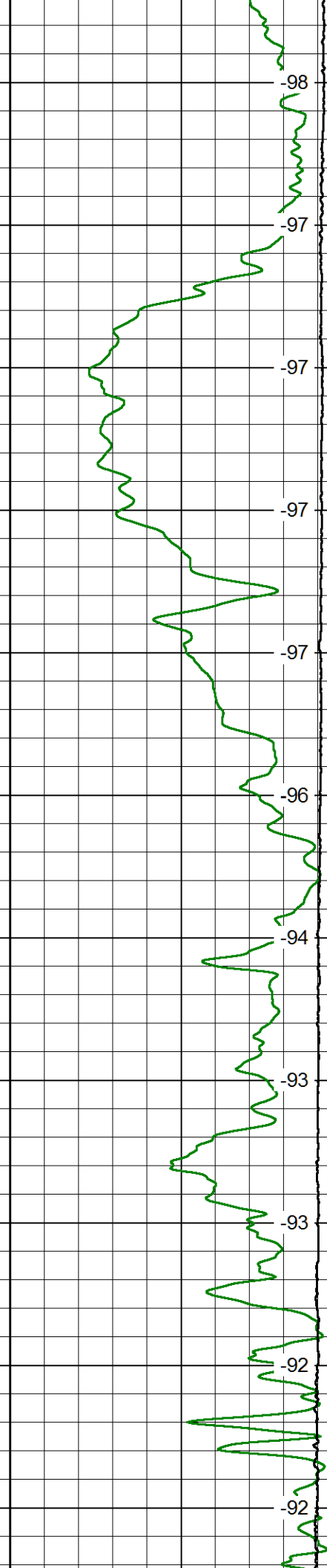
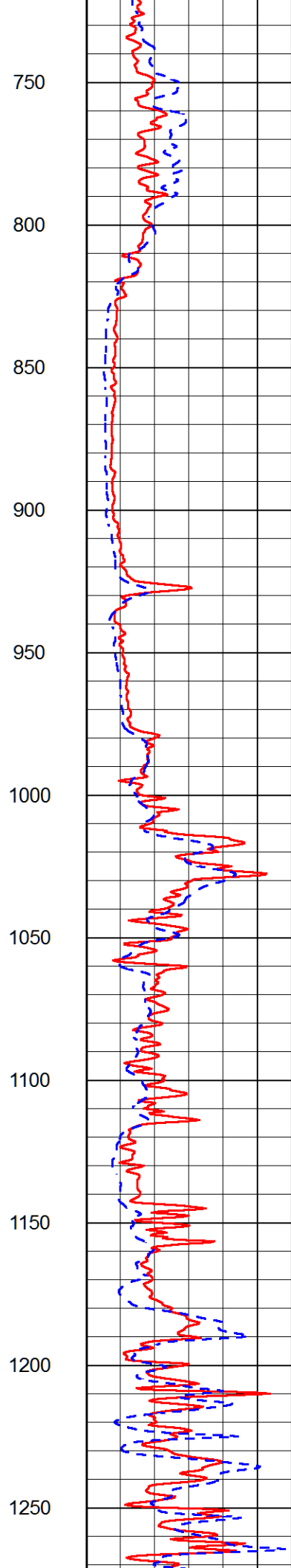
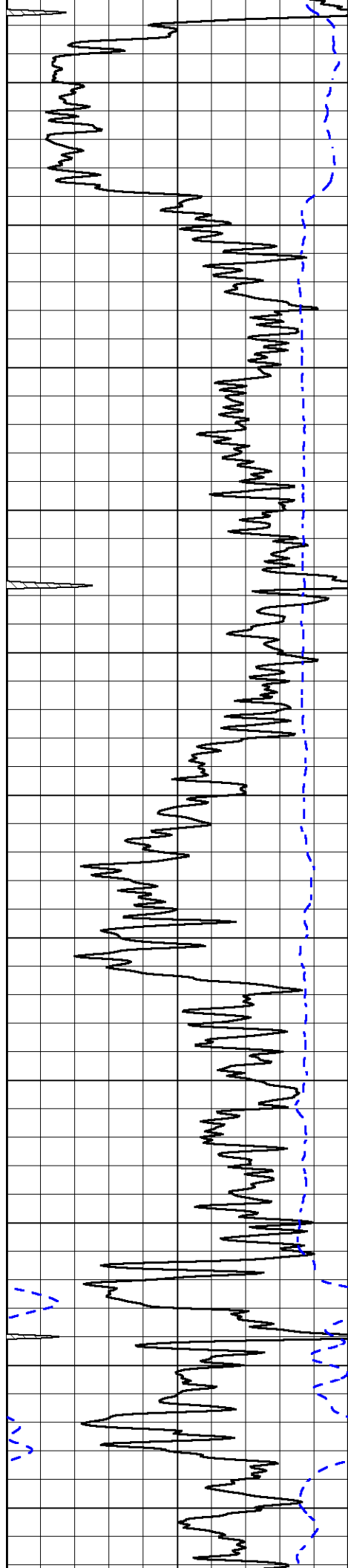
Database File	black tea_wood b_1hd.db
Dataset Pathname	DIL/btstack
Presentation Format	dil2in
Dataset Creation	Thu May 07 12:15:31 2015
Charted by	Depth in Feet scaled 1:600

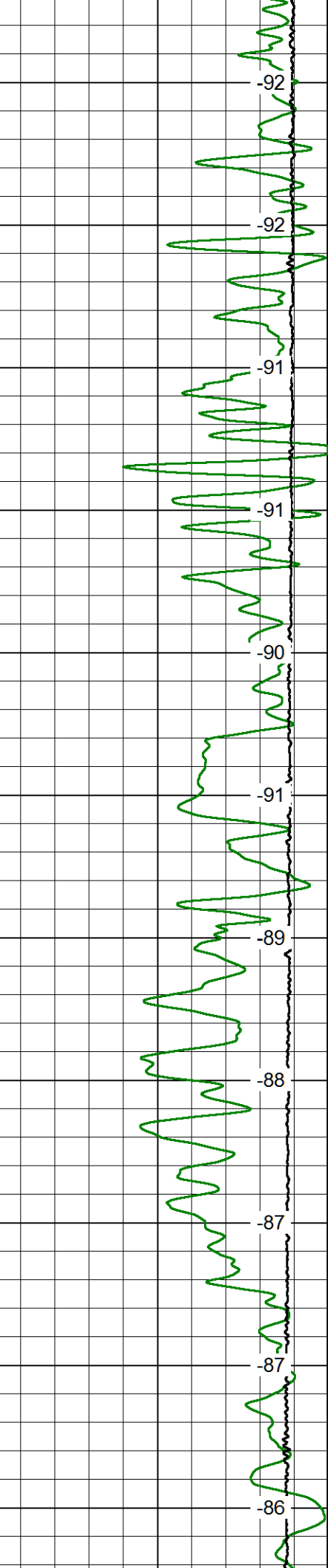
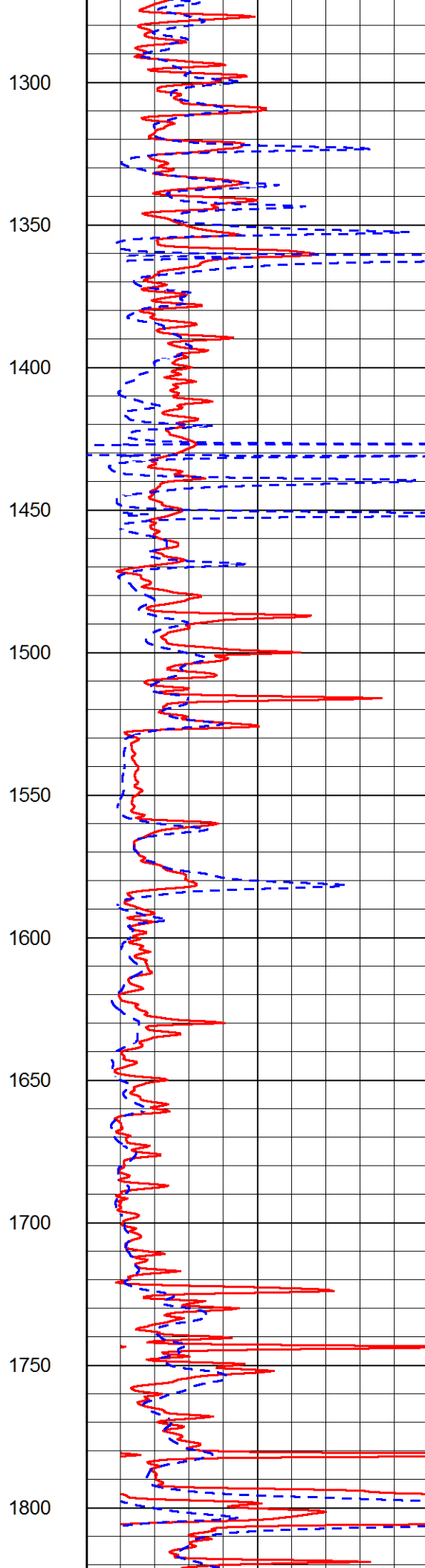
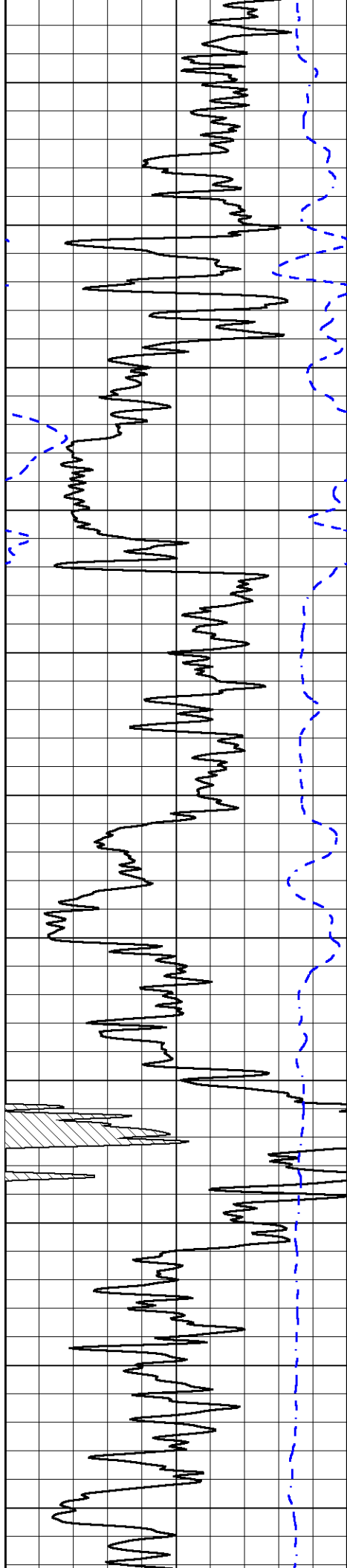
0	Gamma Ray	150
-200	SP (mV)	0

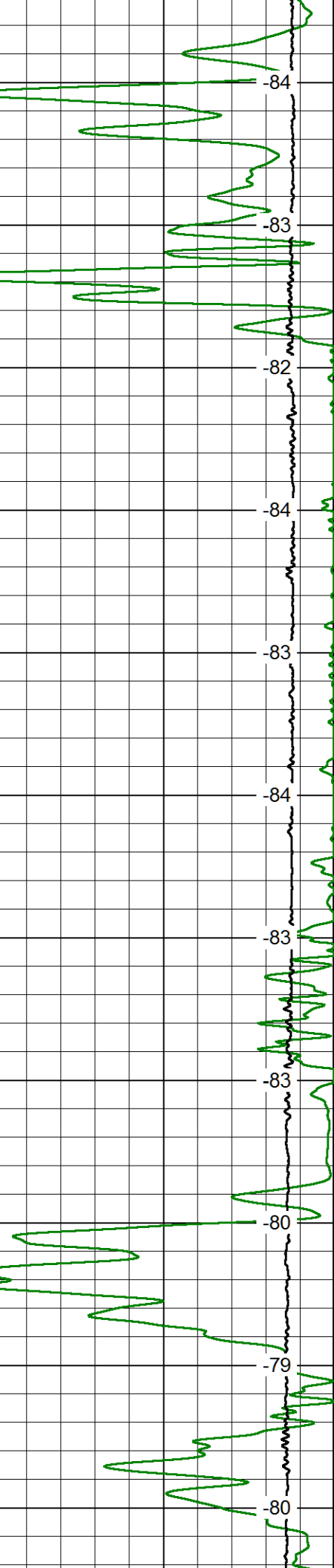
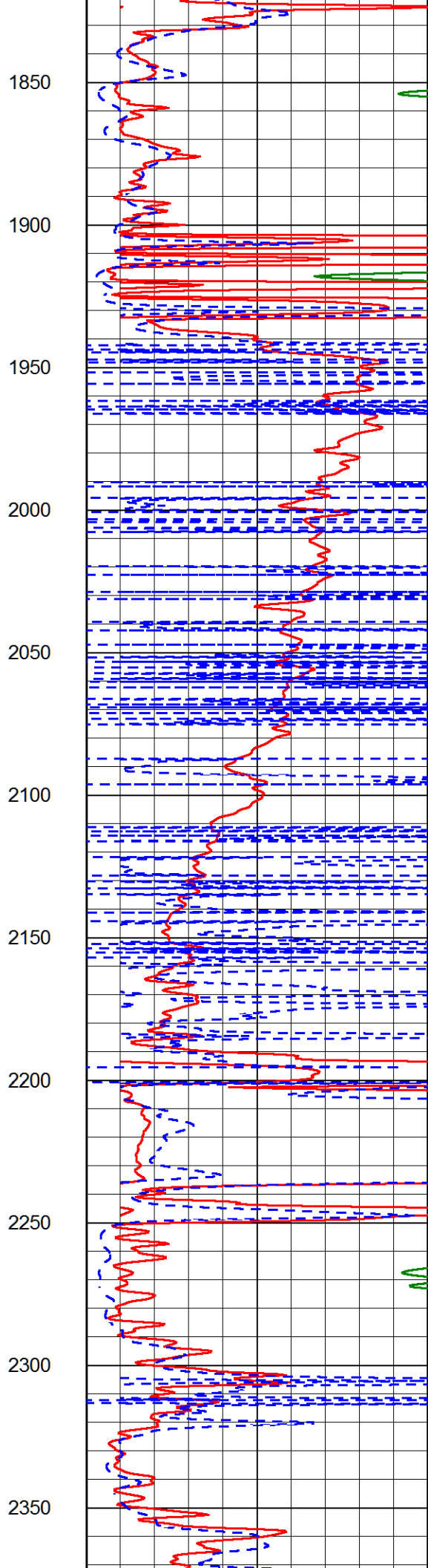
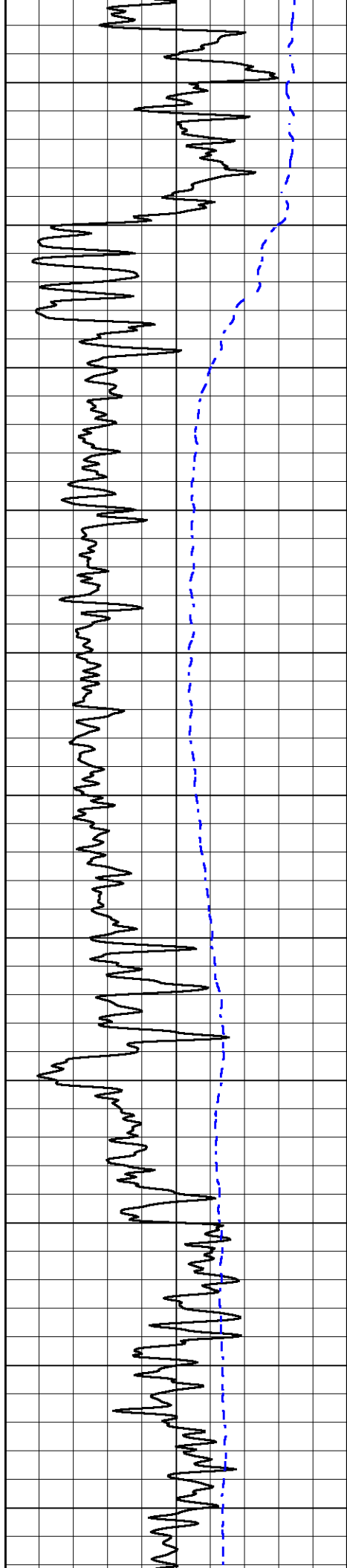
1000	Conductivity	0
15000	Line Tension	0
0	Shallow Resistivity	50
0	Deep Resistivity	50
50	Shallow Resistivity	500
50	Deep Resistivity	500

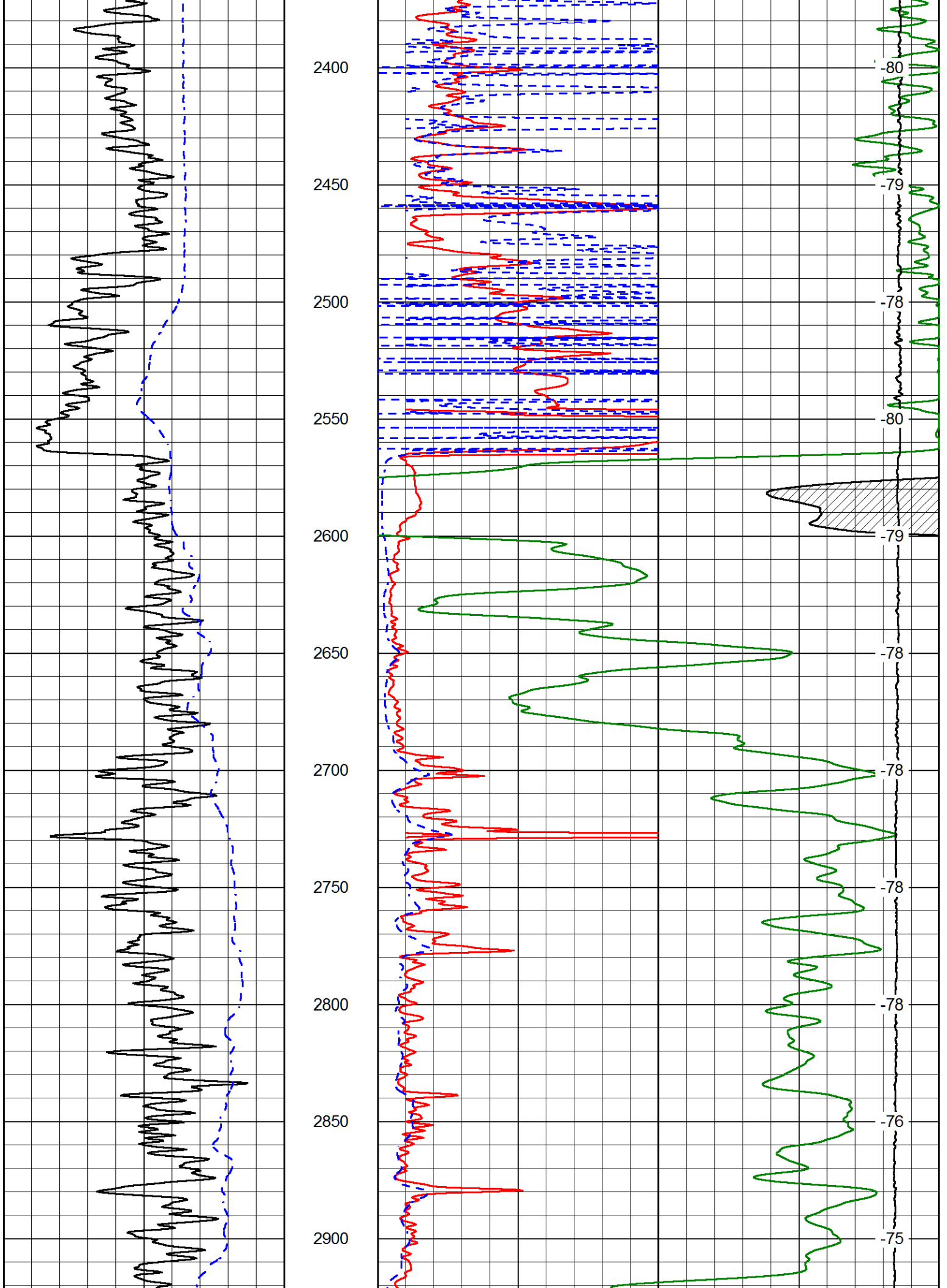
LSPD

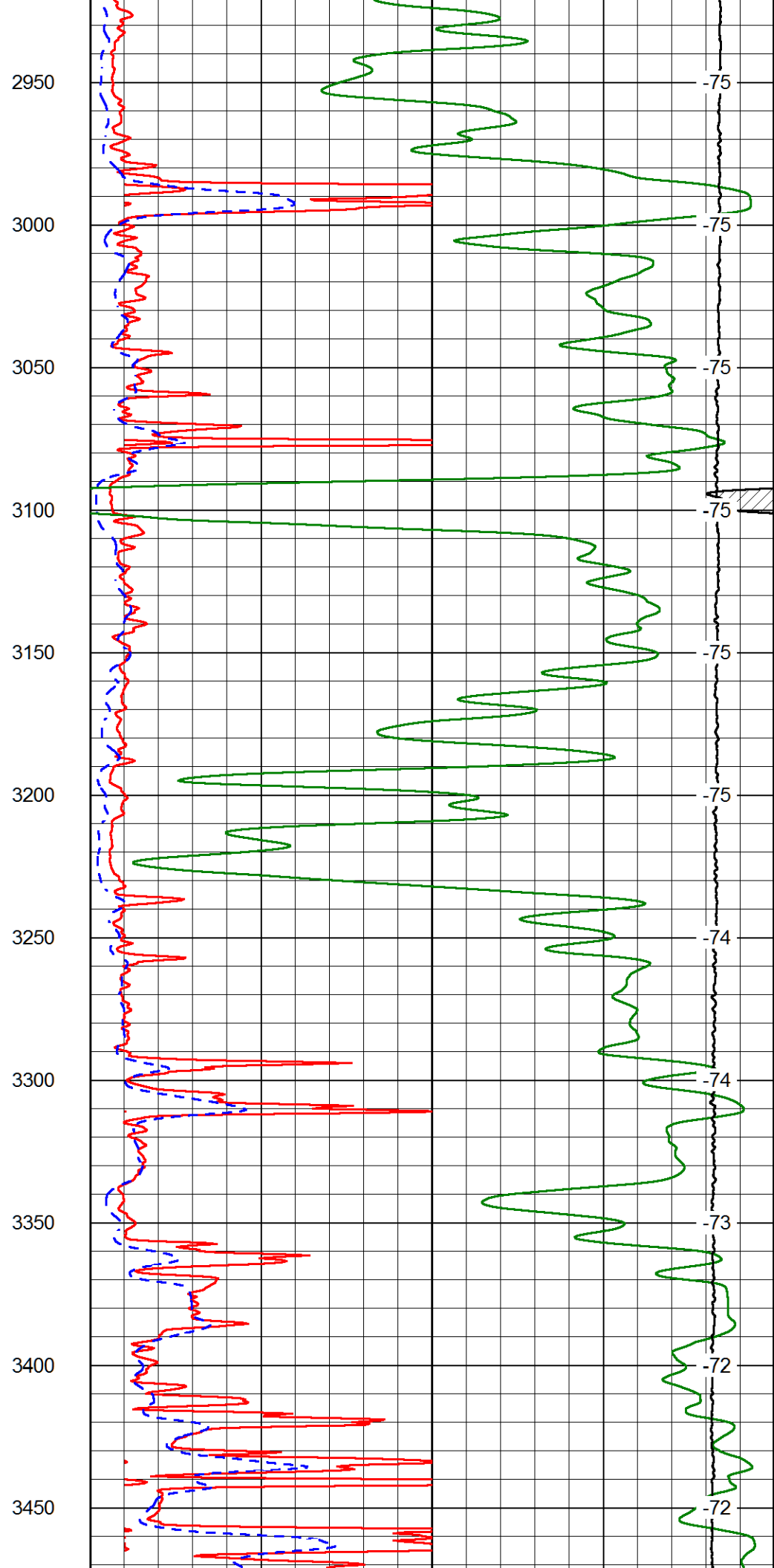
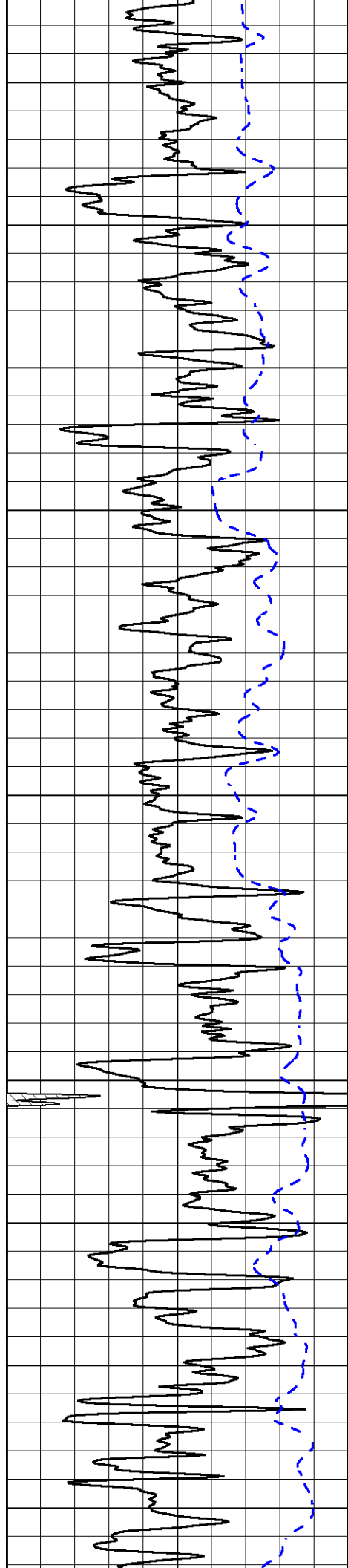


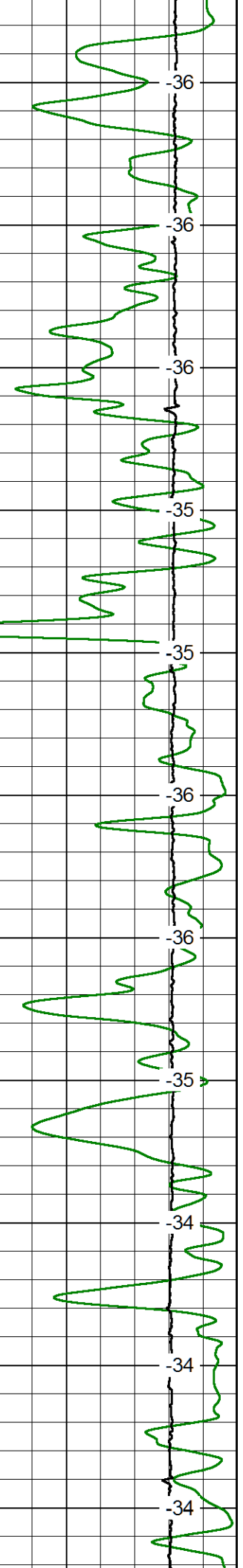
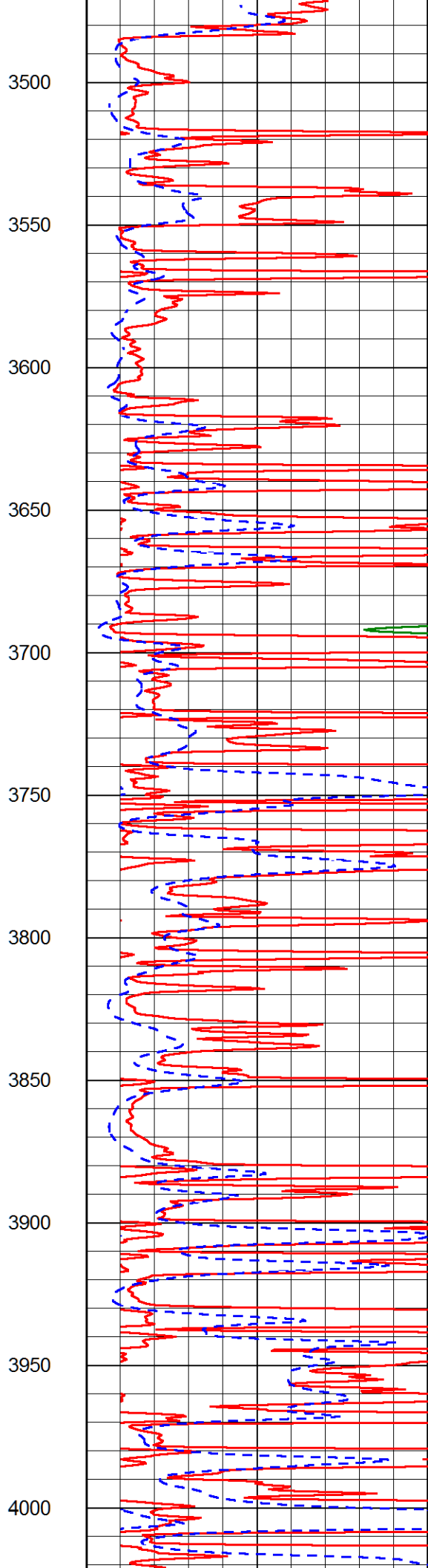
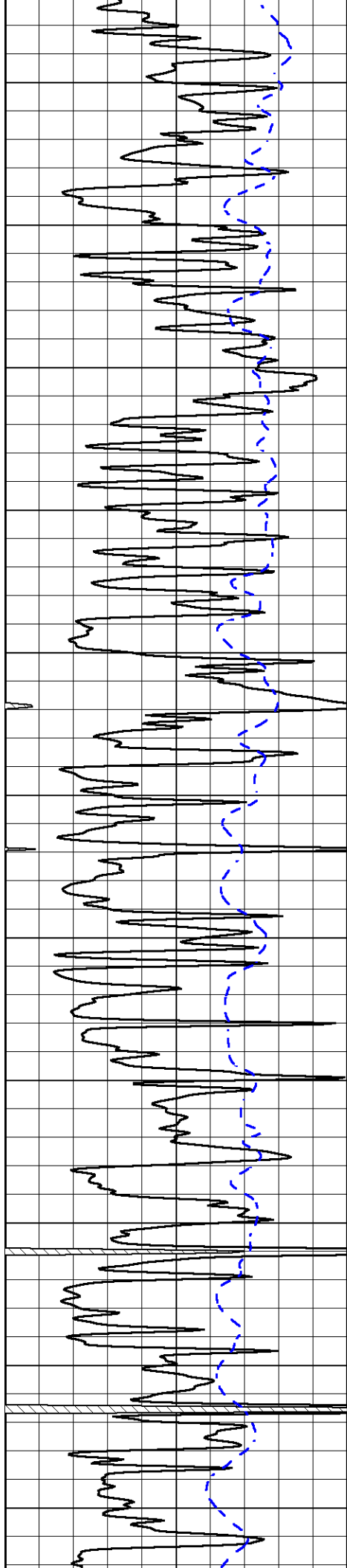


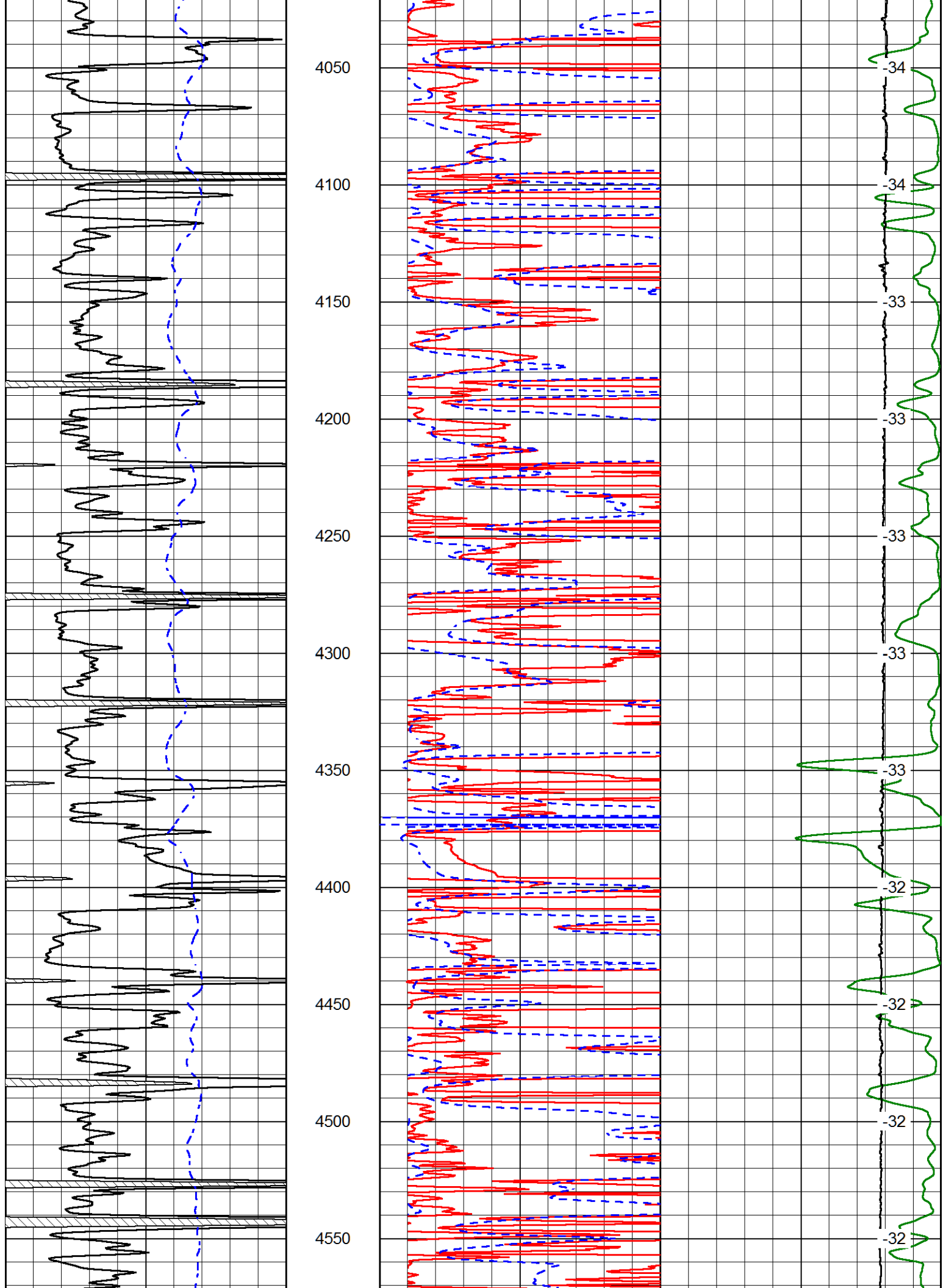


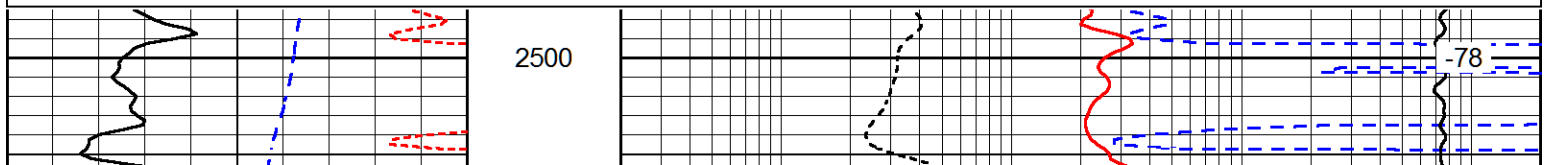
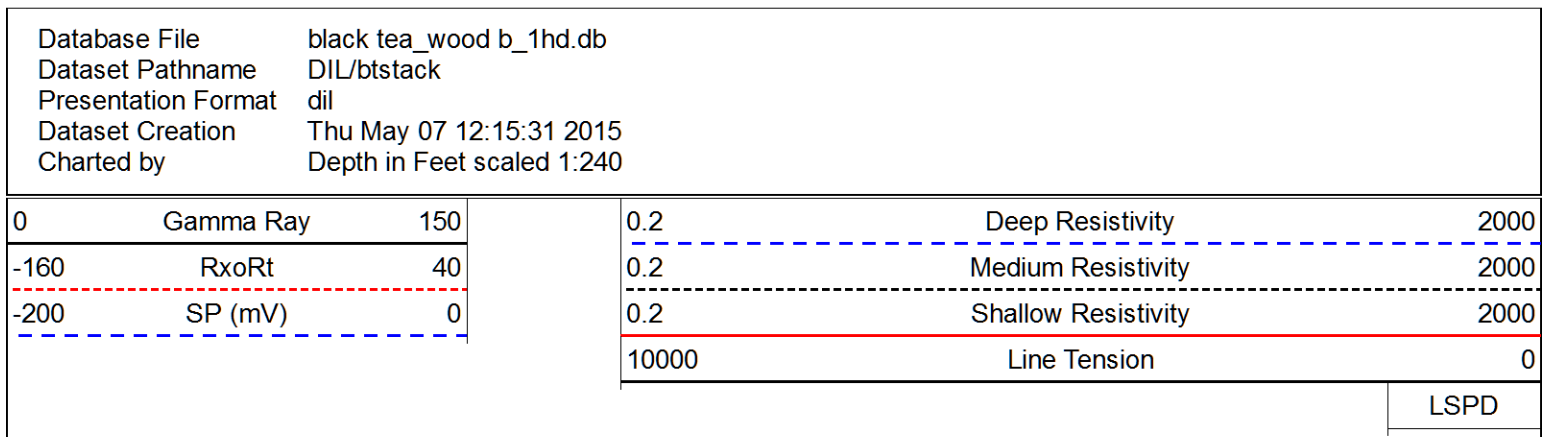
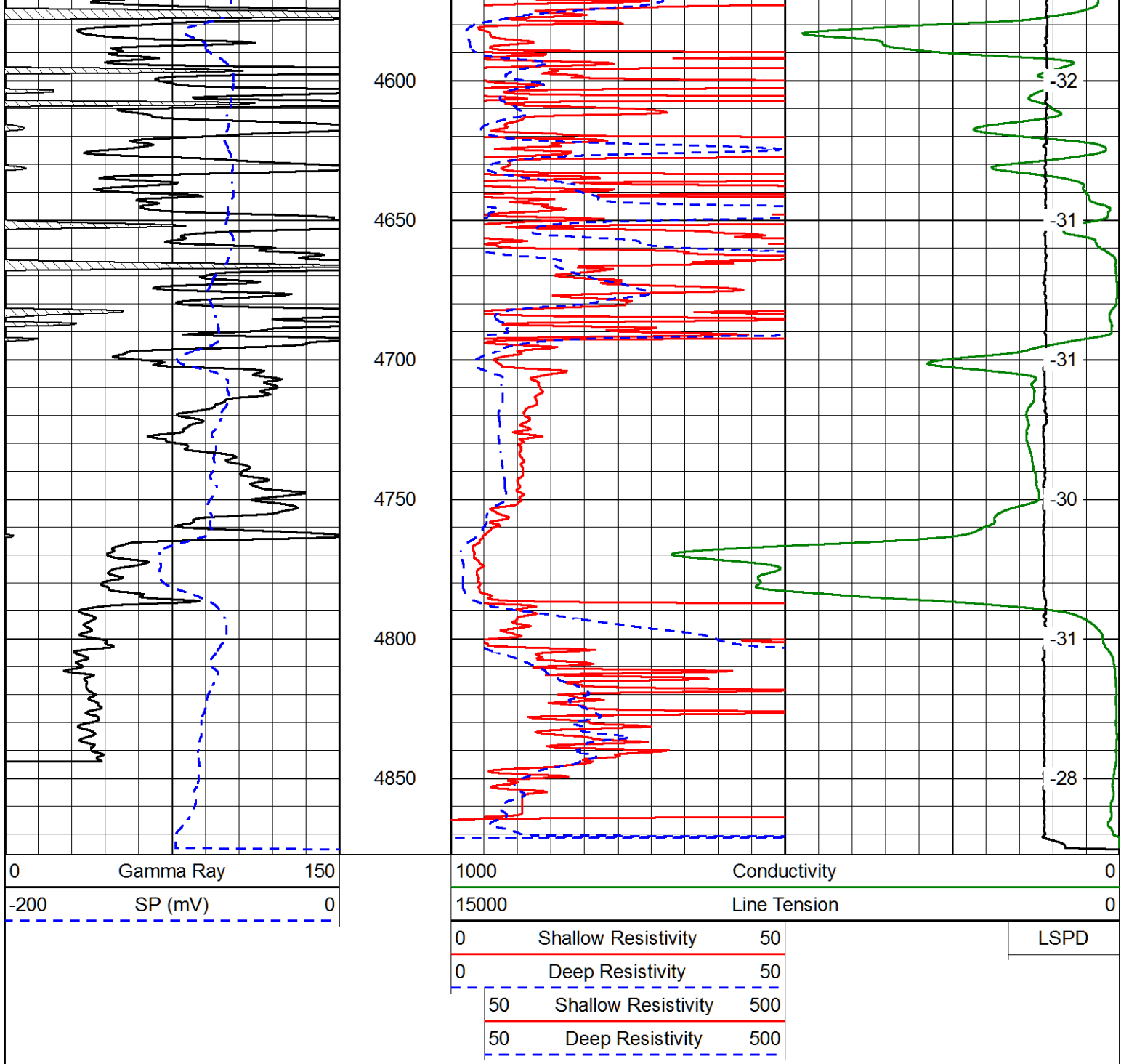


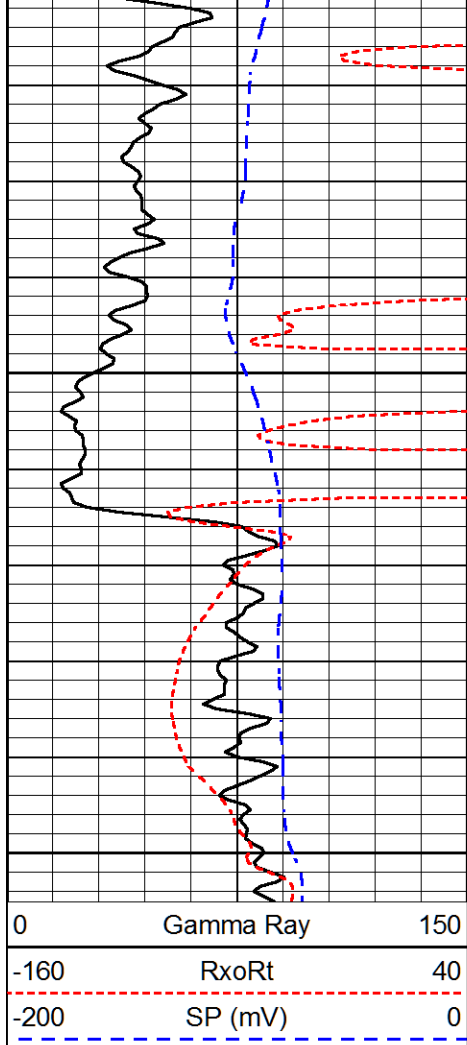








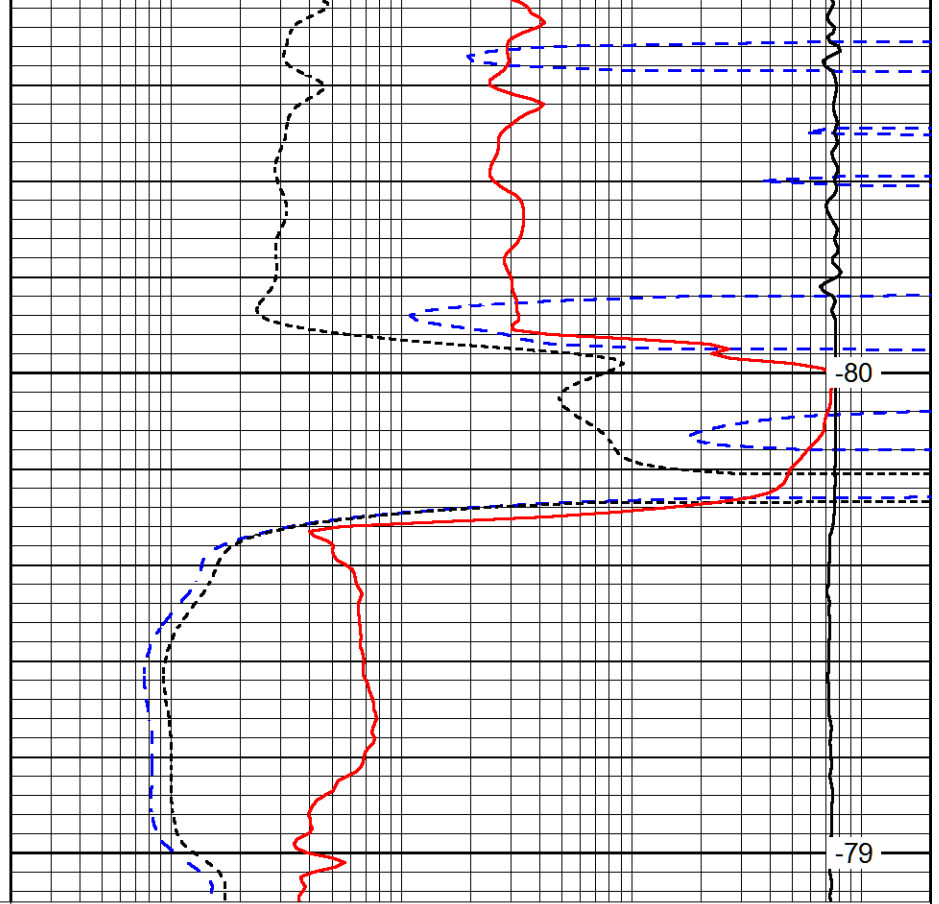




2550

2600

0	Gamma Ray	150
-160	RxoRt	40
-200	SP (mV)	0



80

79

0.2	Deep Resistivity	2000
0.2	Medium Resistivity	2000
0.2	Shallow Resistivity	2000
10000	Line Tension	0

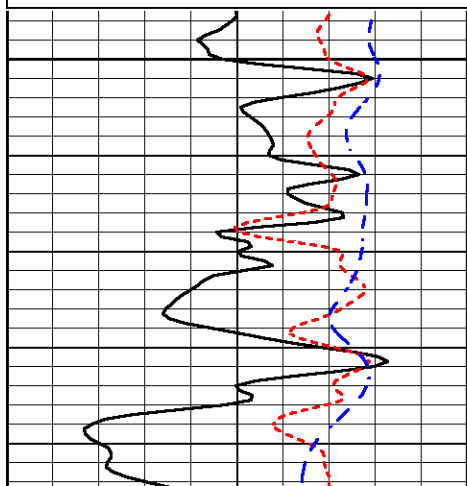
LSPD

Database File black tea_wood b_1hd.db
 Dataset Pathname DIL/btstack
 Presentation Format dil
 Dataset Creation Thu May 07 12:15:31 2015
 Charted by Depth in Feet scaled 1:240

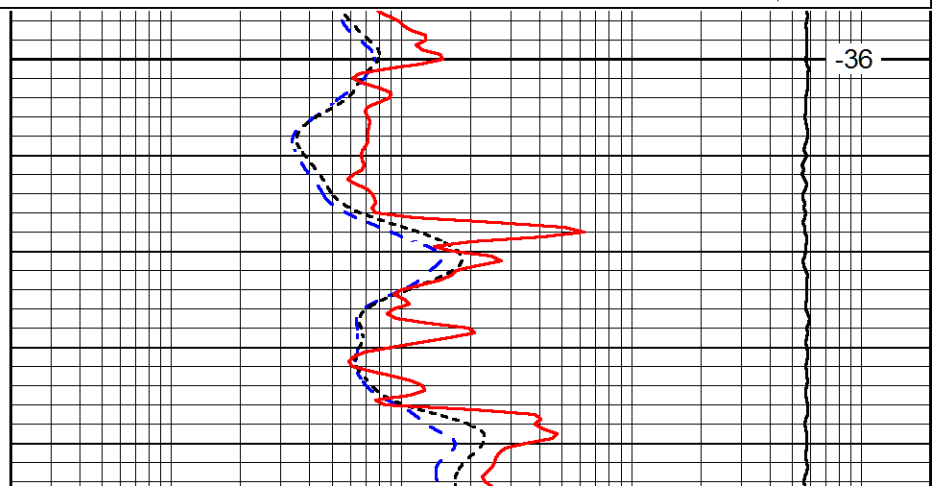
0	Gamma Ray	150
-160	RxoRt	40
-200	SP (mV)	0

0.2	Deep Resistivity	2000
0.2	Medium Resistivity	2000
0.2	Shallow Resistivity	2000
10000	Line Tension	0

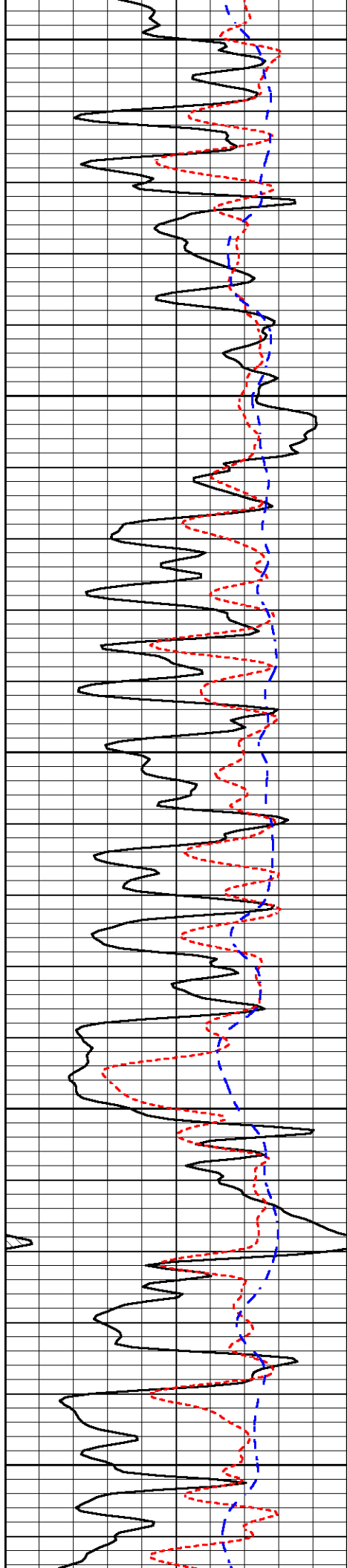
LSPD



3500



36



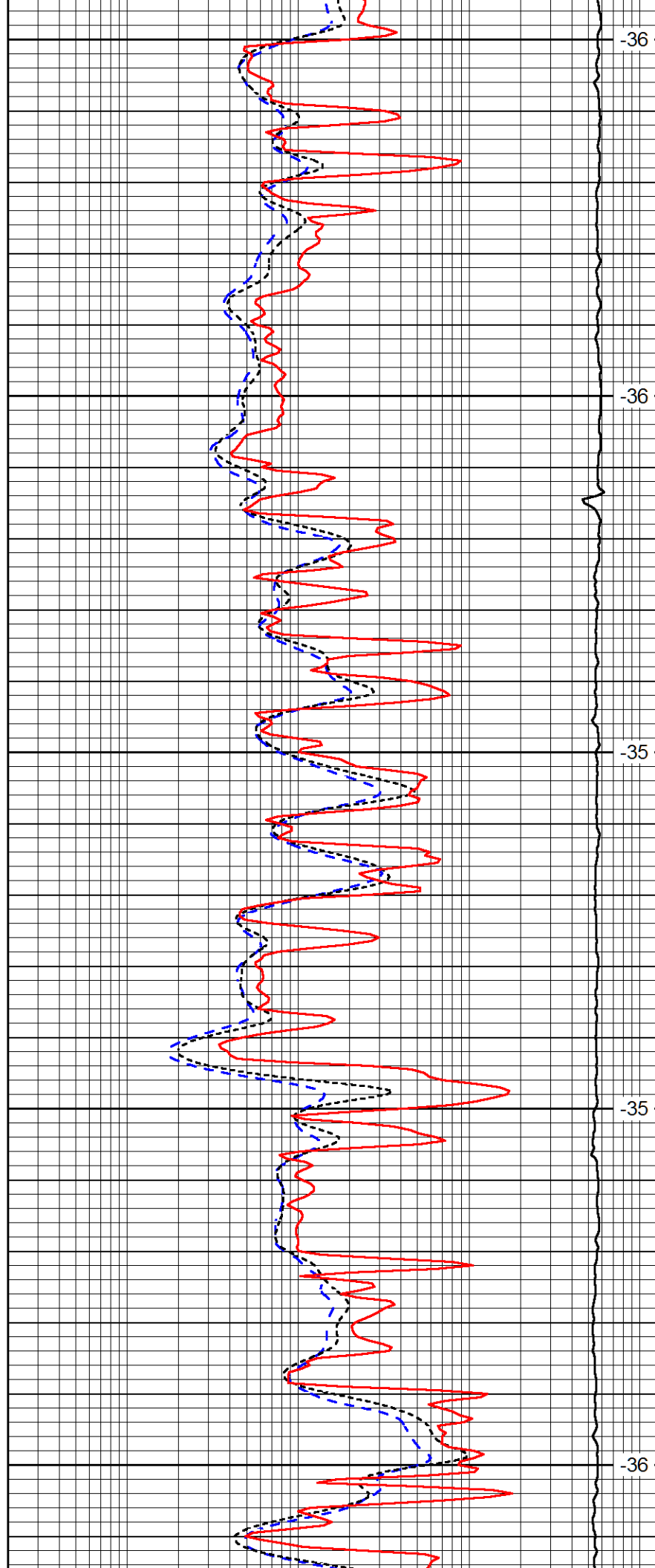
3550

3600

3650

3700

3750



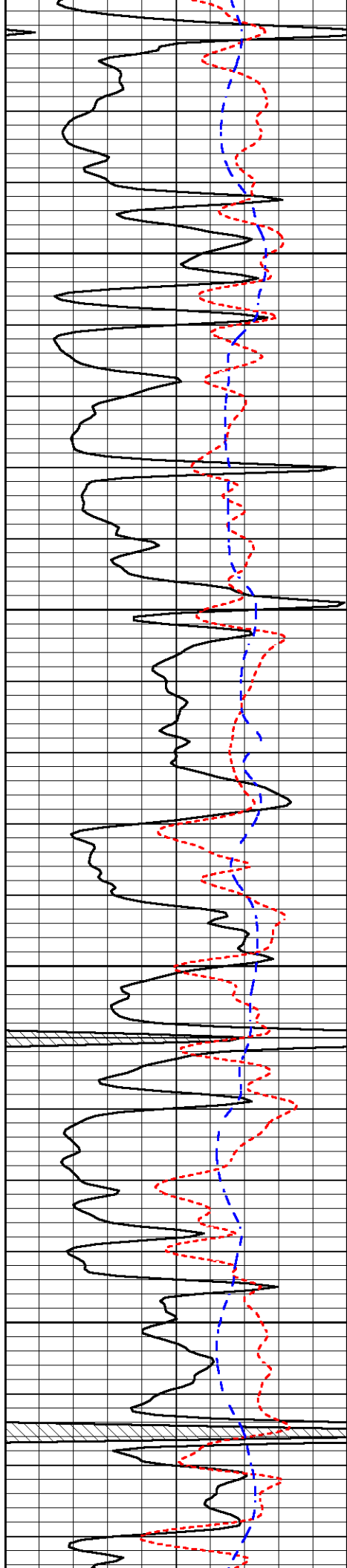
-36

-36

-35

-35

-36

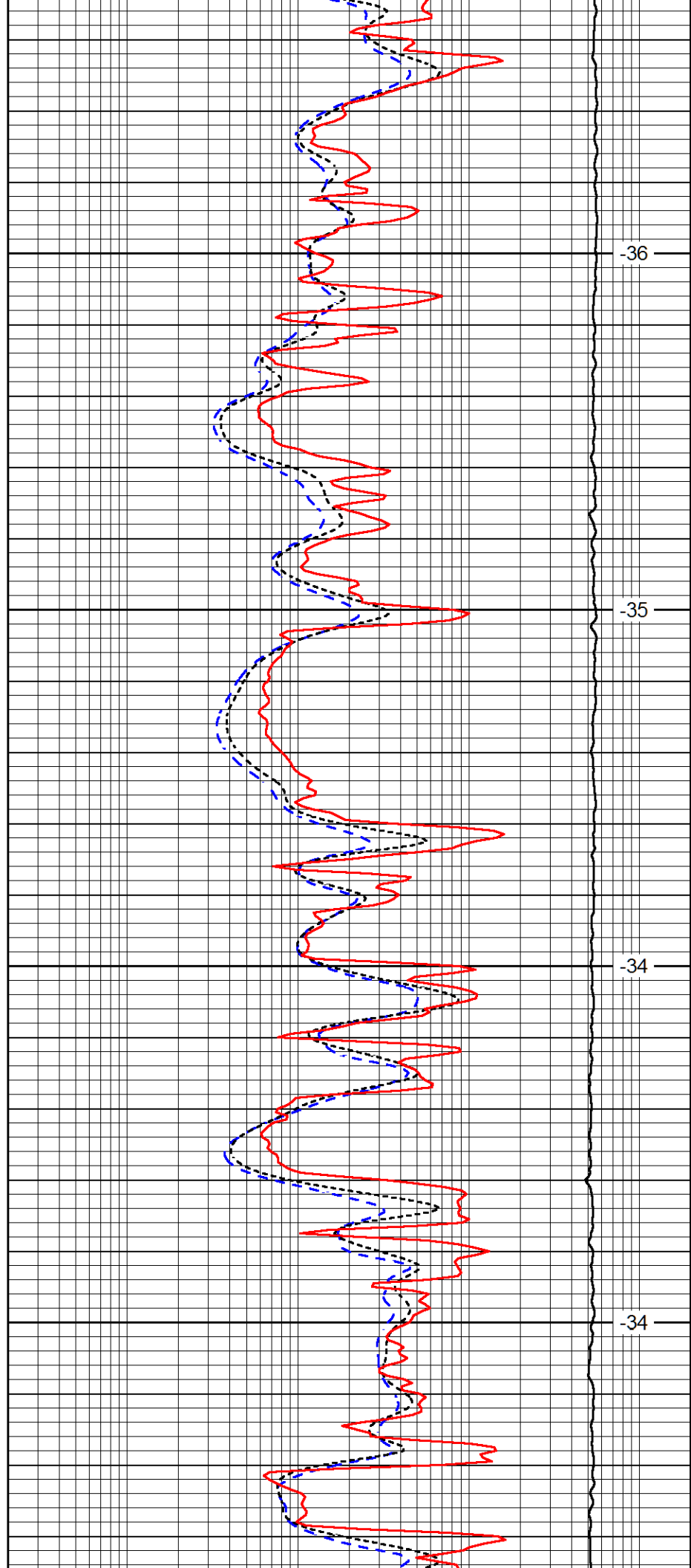


3800

3850

3900

3950

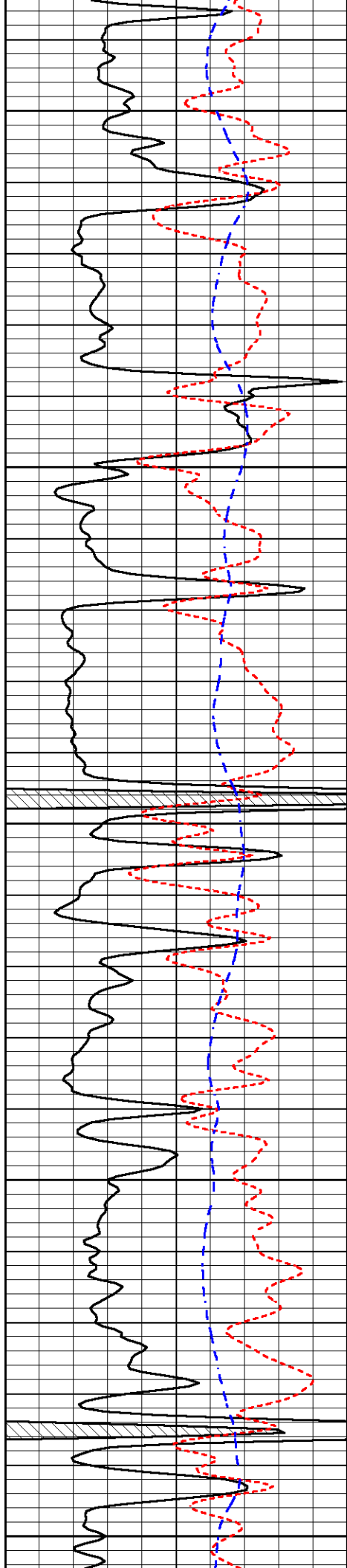


-36

-35

-34

-34



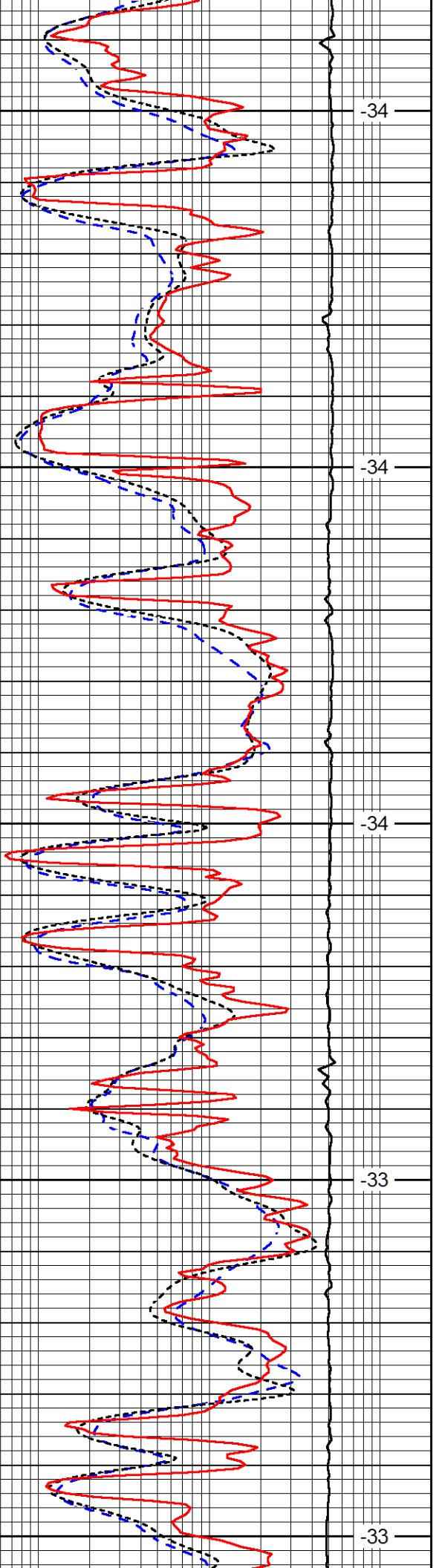
4000

4050

4100

4150

4200



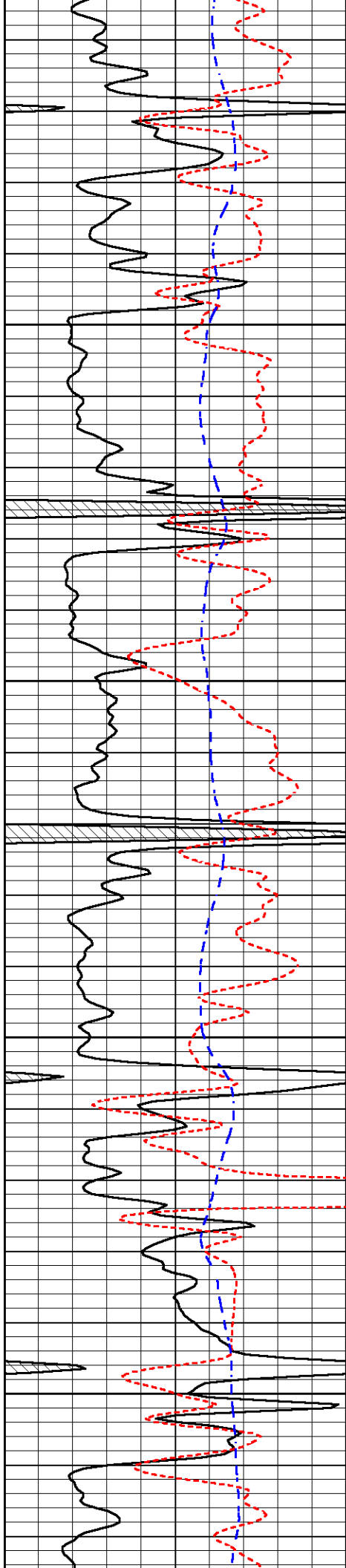
-34

-34

-34

-33

-33

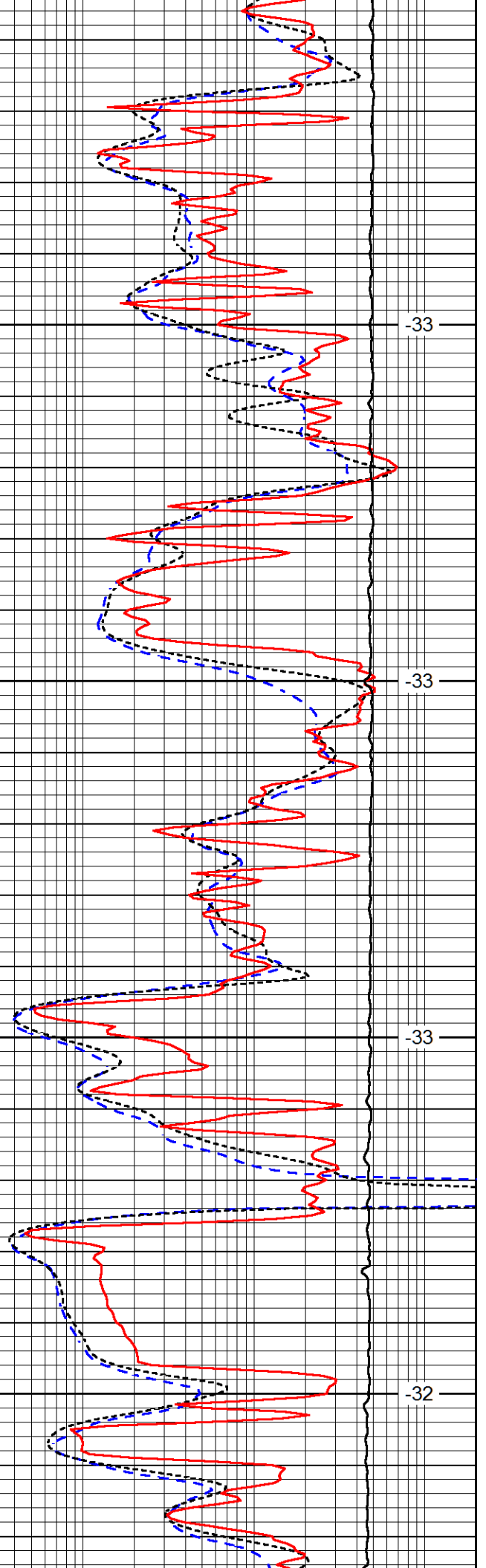


4250

4300

4350

4400

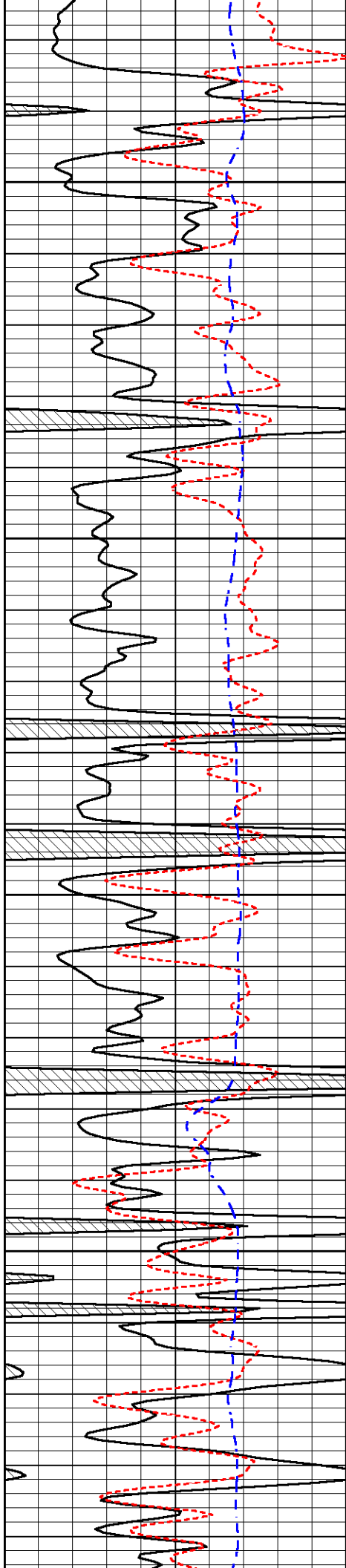


-33

-33

-33

-32

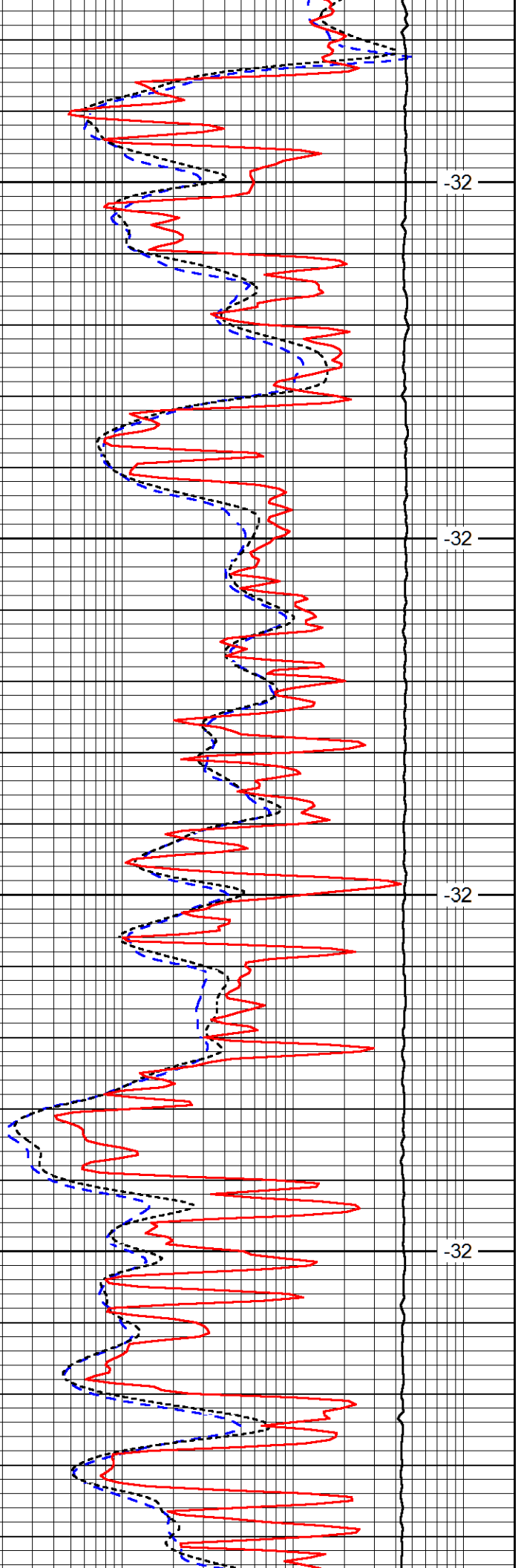


4450

4500

4550

4600

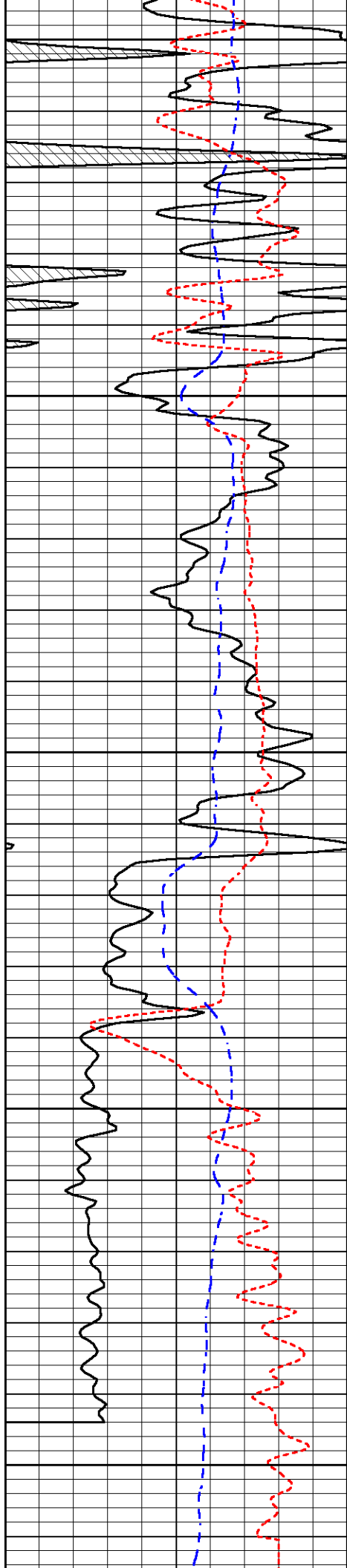


-32

-32

-32

-32



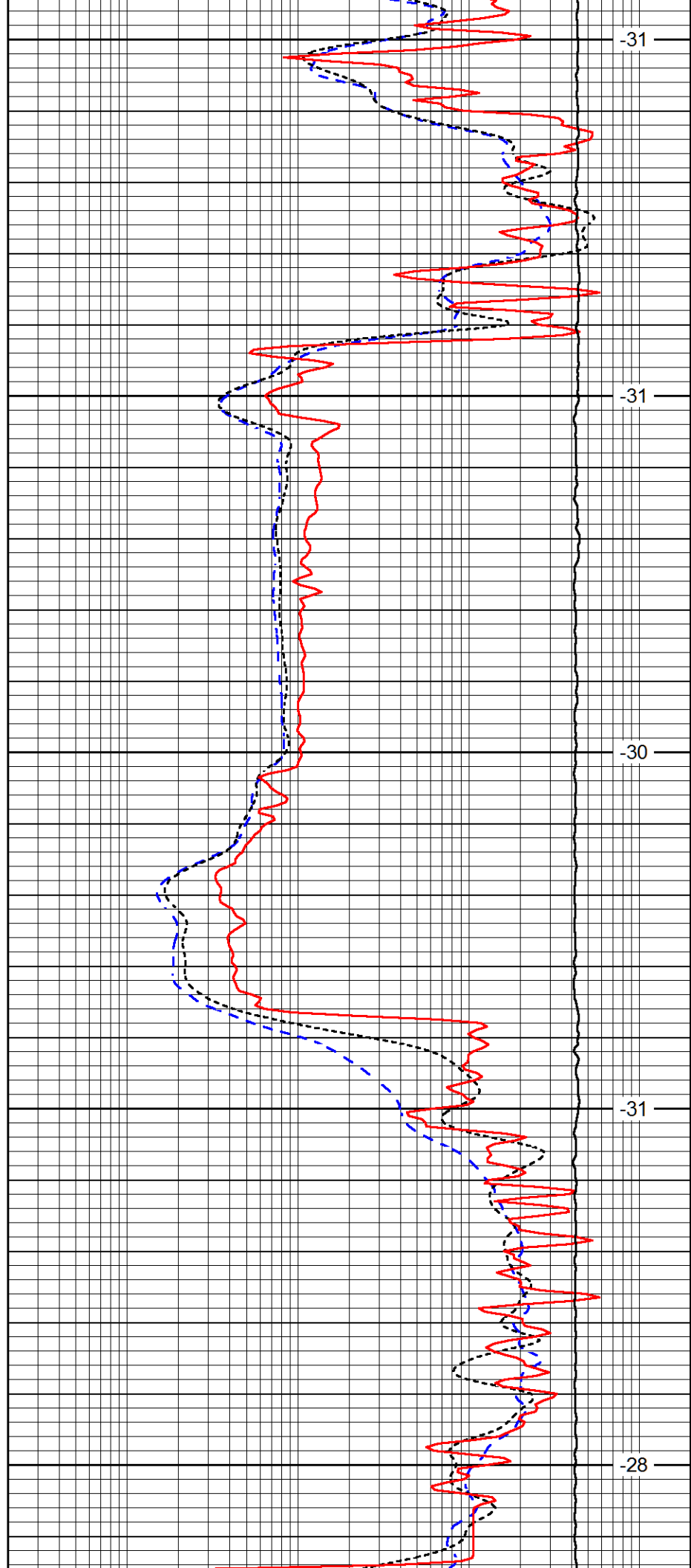
4650

4700

4750

4800

4850



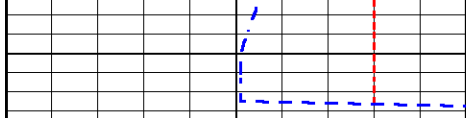
-31

-31

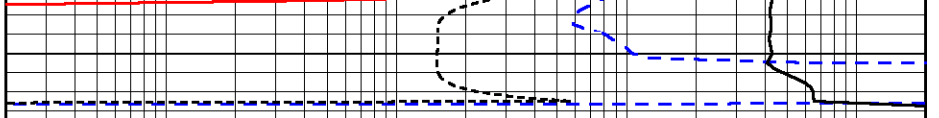
-30

-31

-28



0	Gamma Ray	150
-160	RxoRt	40
-200	SP (mV)	0



0.2	Deep Resistivity	2000
0.2	Medium Resistivity	2000
0.2	Shallow Resistivity	2000
10000	Line Tension	0

LSPD