



Microresistivity Log

Pioneer Energy Services

API No.	15-109-21400-00-00	
Company	BLACK TEA OIL, LLC	
Well	WOOD B #1	
Field	ANTELOPE SPRINGS	
County	LOGAN	State
		KANSAS
Location	1260' FSL & 1240' FEL	
Sec: 16	Twp: 14S	Rge: 35W
Permanent Datum	GROUND LEVEL	Elevation 3177
Log Measured From	KELLY BUSHING	9 Ft. Above Perm. Datum
Drilling Measured From	KELLY BUSHING	
		Other Services CNL/CDL DIL/BHCS
		Elevation K.B. 3186 D.F. 3177 G.L. 3177

Date	5/7/2015
Run Number	TWO
Depth Driller	4870
Depth Logger	4871
Bottom Logged Interval	4870
Top Log Interval	3500
Casing Driller	8.625 @ 264
Casing Logger	267
Bit Size	7.875
Type Fluid in Hole	CHEMICAL
Salinity, ppm CL	10000
Density / Viscosity	9.1 54
pH / Fluid Loss	9.5 7.2
Source of Sample	Flowline
Rm @ Meas. Temp	0.55 @ 58
Rmf @ Meas. Temp	0.41 @ 58
Rmc @ Meas. Temp	0.74 @ 58
Source of Rmf / Rmc	Charts
Rm @ BHT	0.26 @ 125
Operating Rig Time	5 HOURS
Max Rec. Temp. F	125
Equipment Number	91
Location	HAYS
Recorded By	D. SCHMIDT
Witnessed By	ANTHONY STEINKE

<<< Fold Here >>>

All interpretations are opinions based on inferences from electrical or other measurements and we cannot and do not guarantee the accuracy or correctness of any interpretation, and we shall not, except in the case of gross or willful negligence on our part, be liable or responsible for any loss, costs, damages, or expenses incurred or sustained by anyone resulting from any interpretation made by any of our officers, agents or employees. These interpretations are also subject to our general terms and conditions set out in our current Price Schedule.

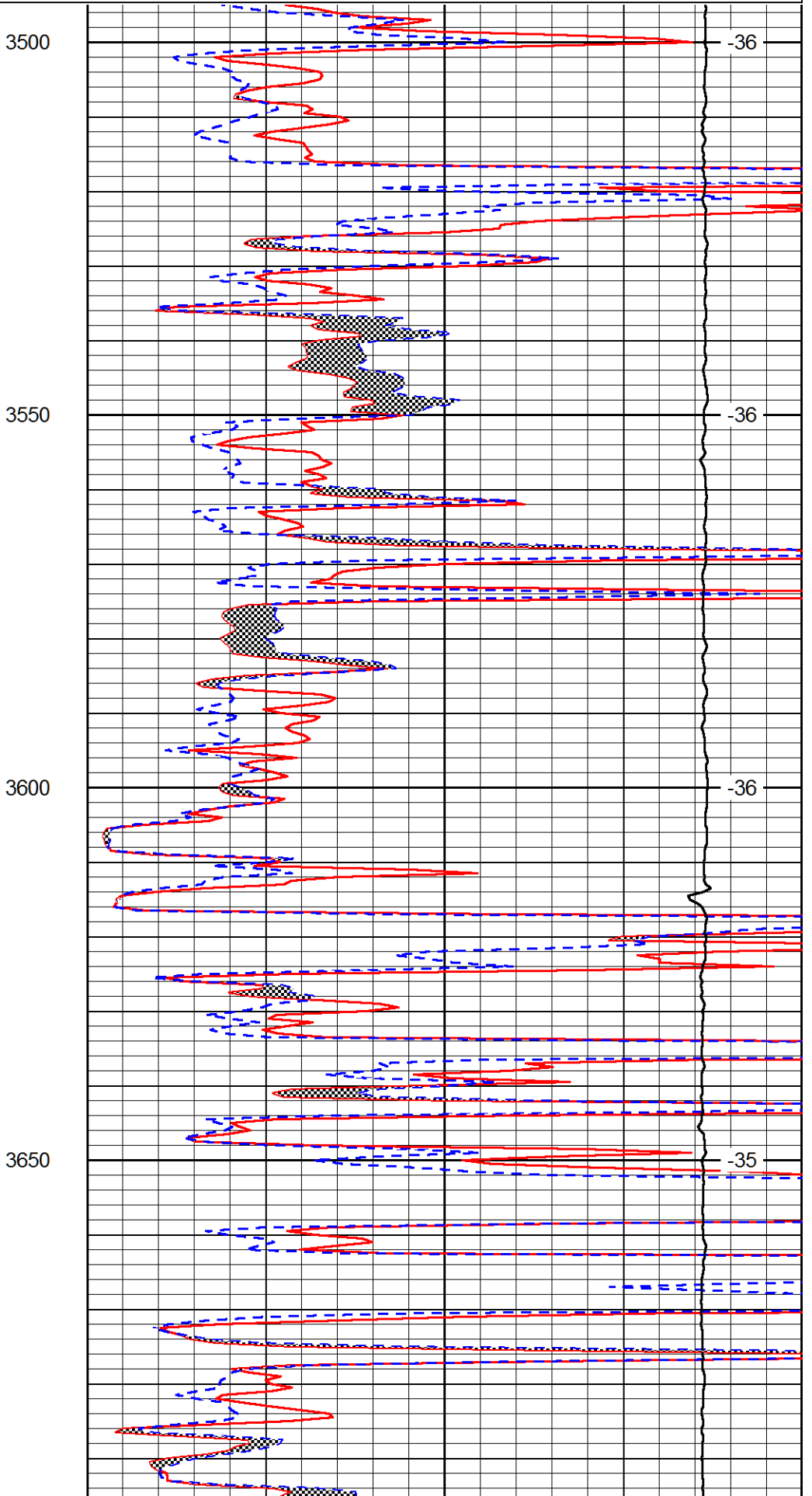
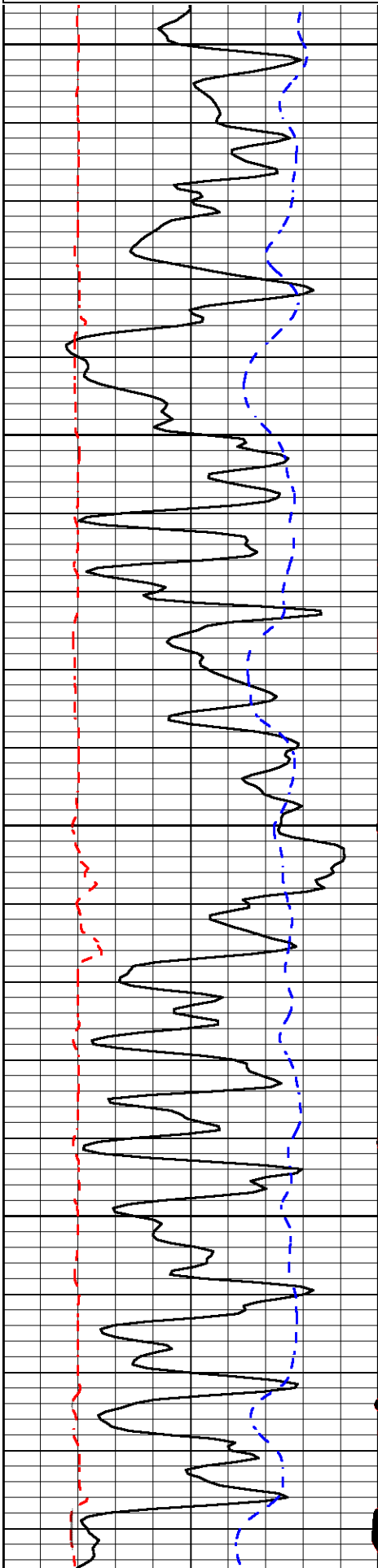
Comments

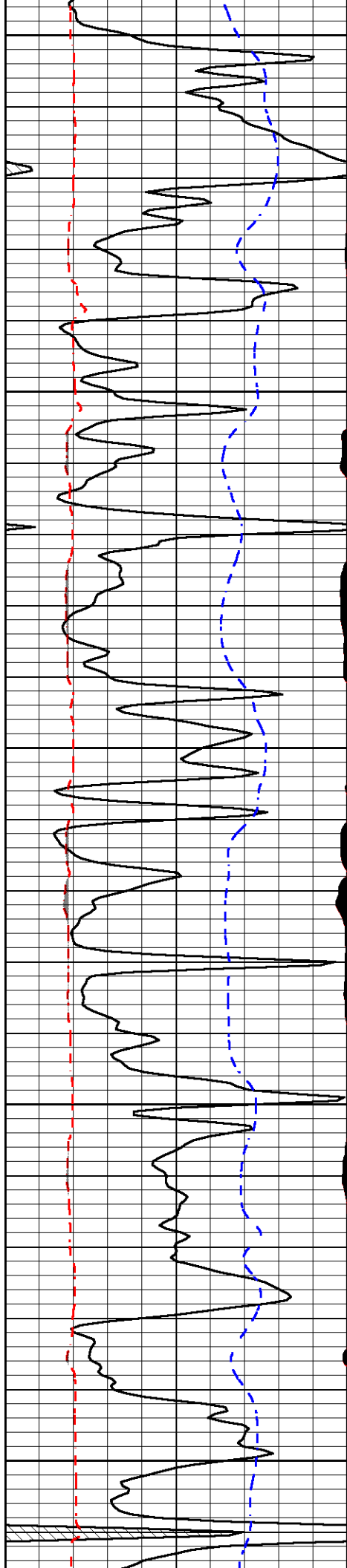
Thank you for using Pioneer Energy Services
785.625.3858
RUSSELL SPRINGS,
WEST ON HWY 25 TO 240 RD,
SOUTH TO JAYHAWK RD, 1 EAST,
NORTH INTO

Database File	black tea_wood b_1hd.db
Dataset Pathname	DIL/btstack
Presentation Format	micro
Dataset Creation	Thu May 07 12:15:31 2015
Charted by	Depth in Feet scaled 1:240

0	Gamma Ray	150
6	MCAL (GAPI)	16
2.875	Mud Cake (GAPI)	7.875
-200	SP (mV)	0

0	Micro Inverse 1 X 1	40
0	Micro Normal 2"	40
10000	Line Weight	0
		LSPD





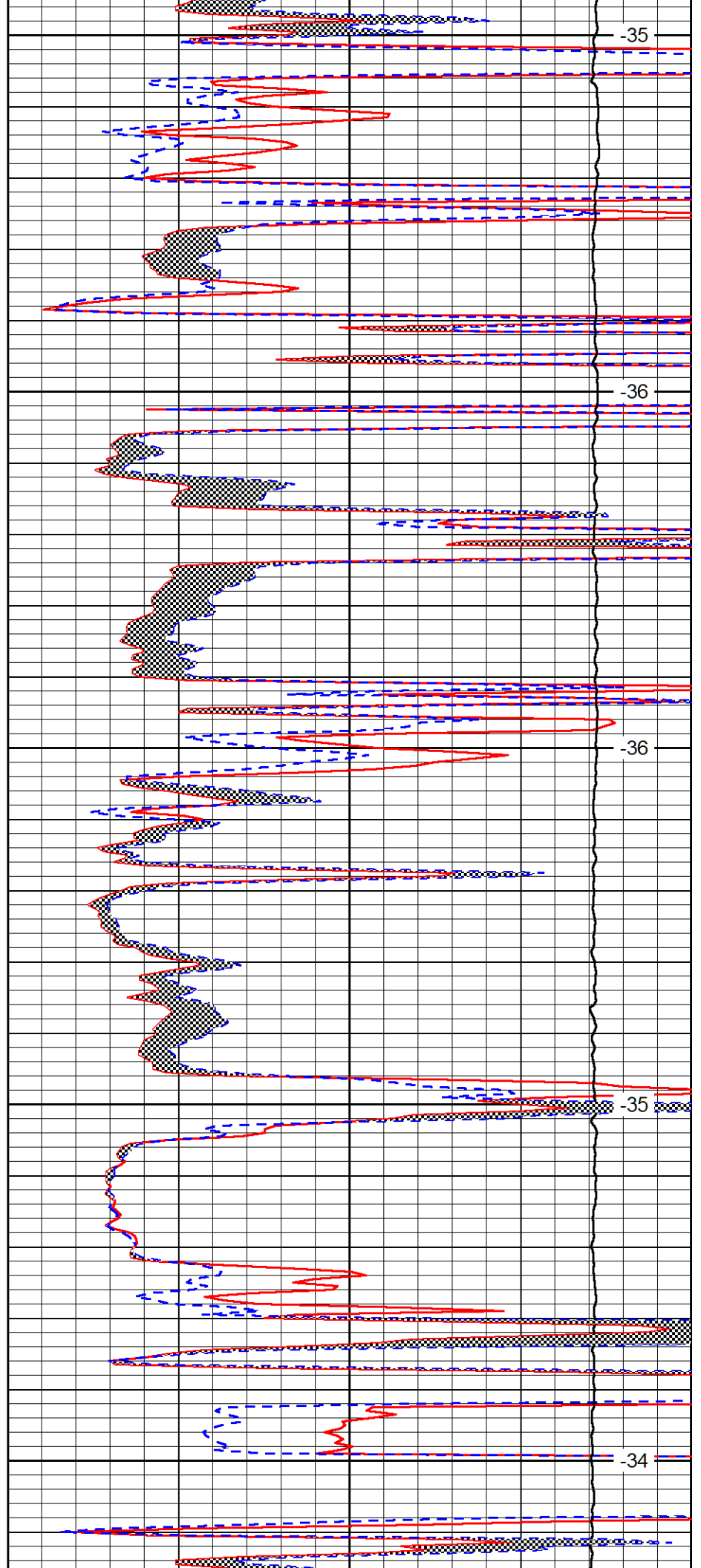
3700

3750

3800

3850

3900



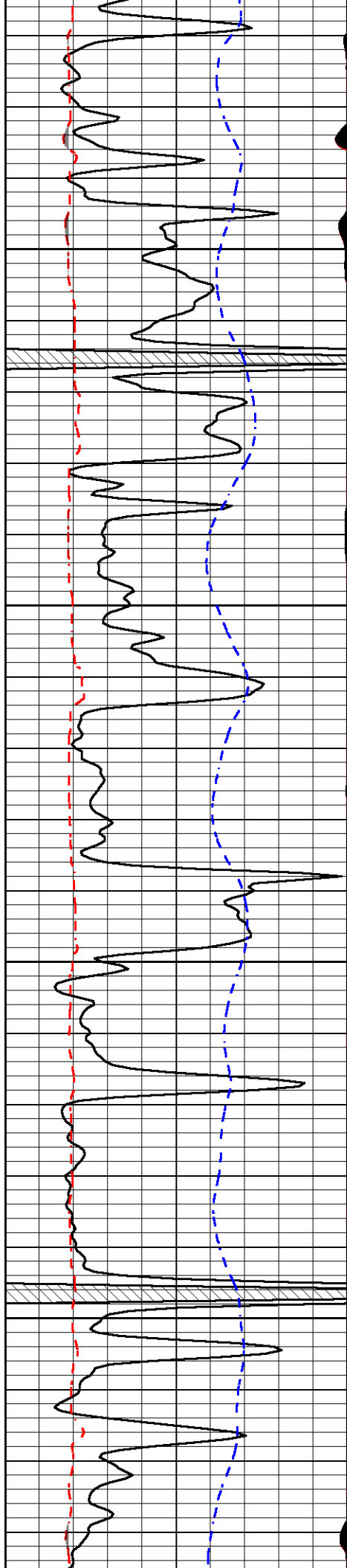
-35

-36

-36

-35

-34

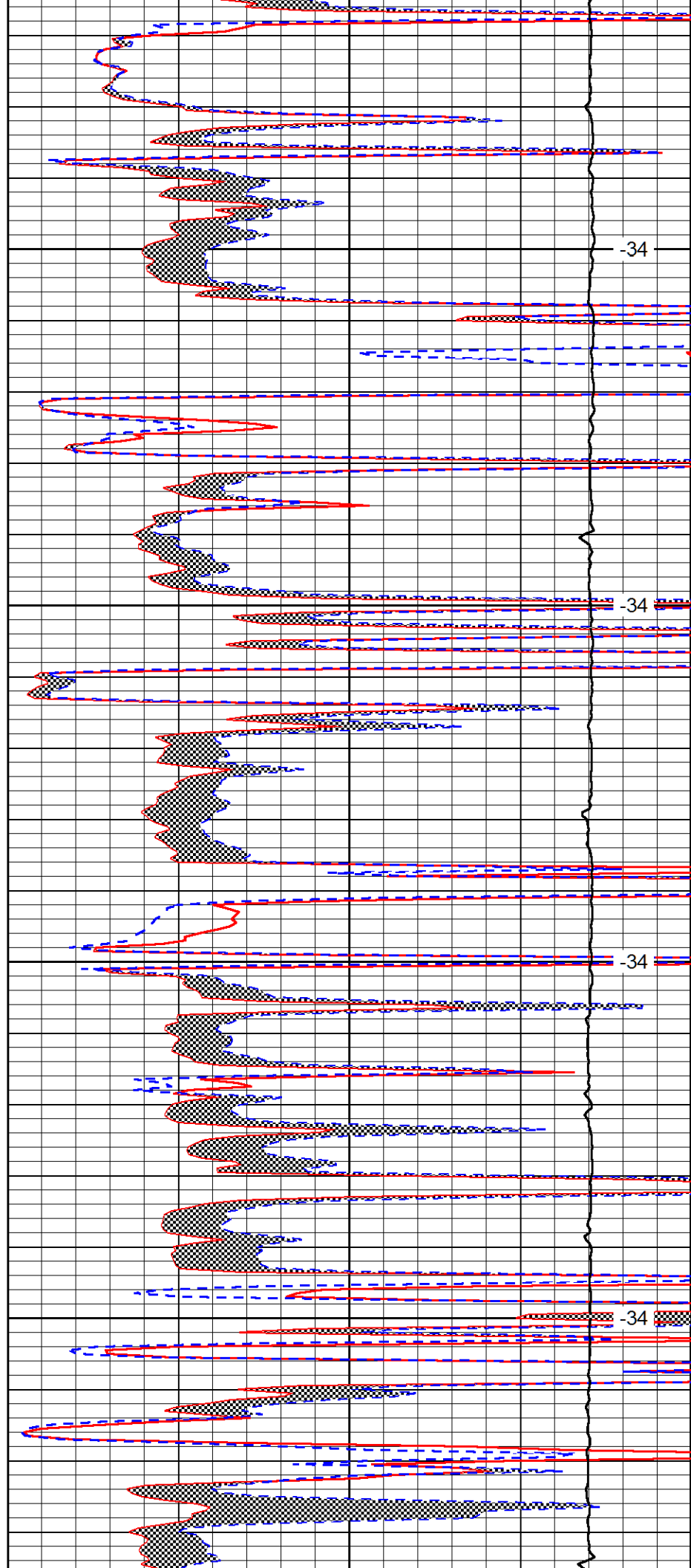


3950

4000

4050

4100

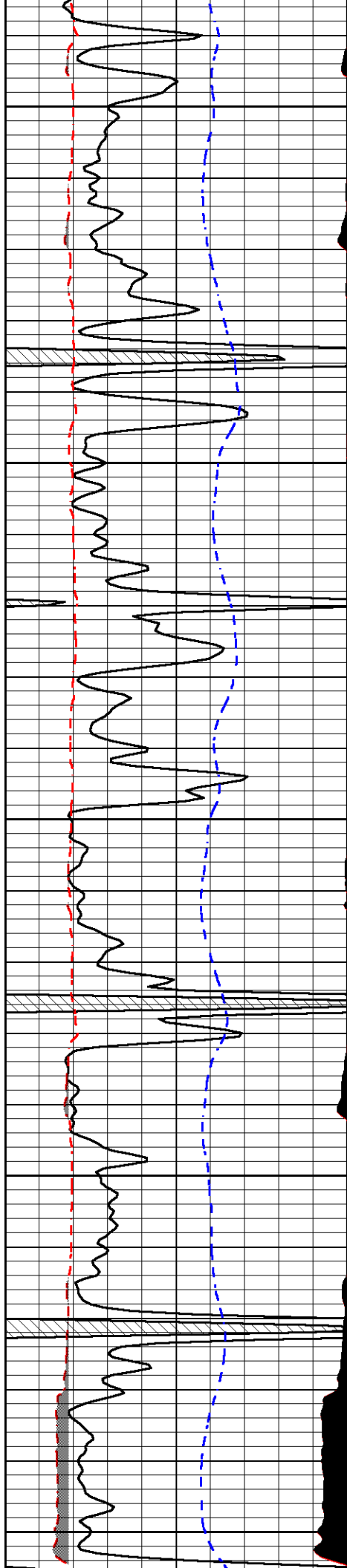


-34

-34

-34

-34



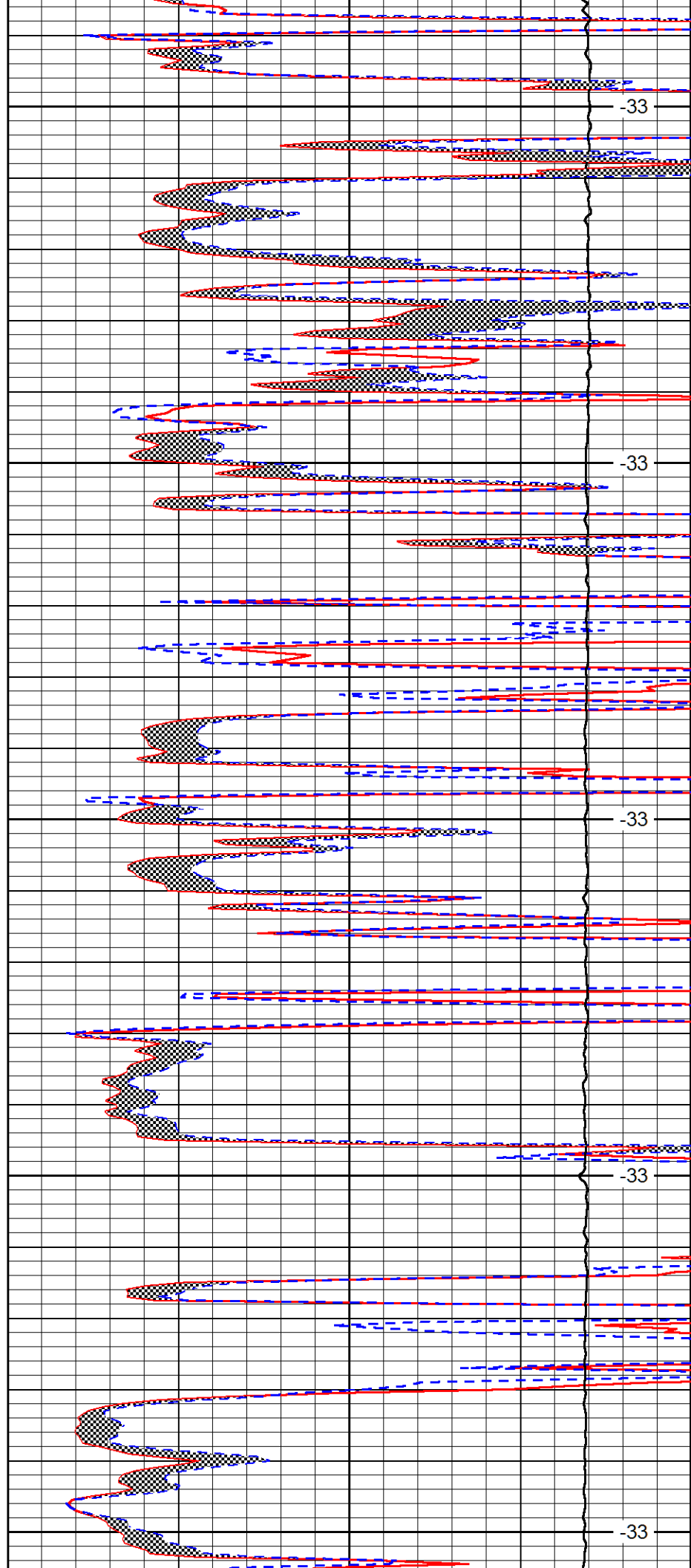
4150

4200

4250

4300

4350



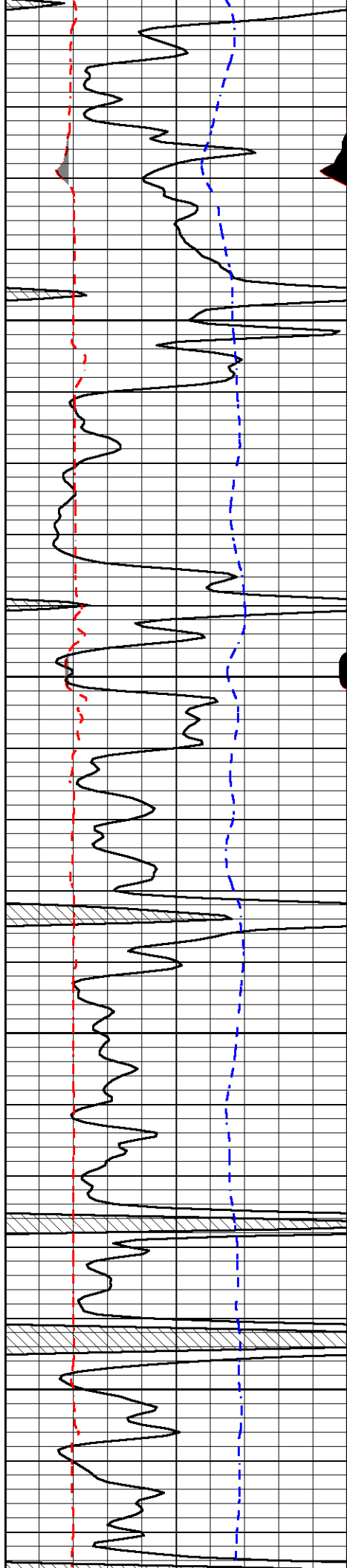
-33

-33

-33

-33

-33

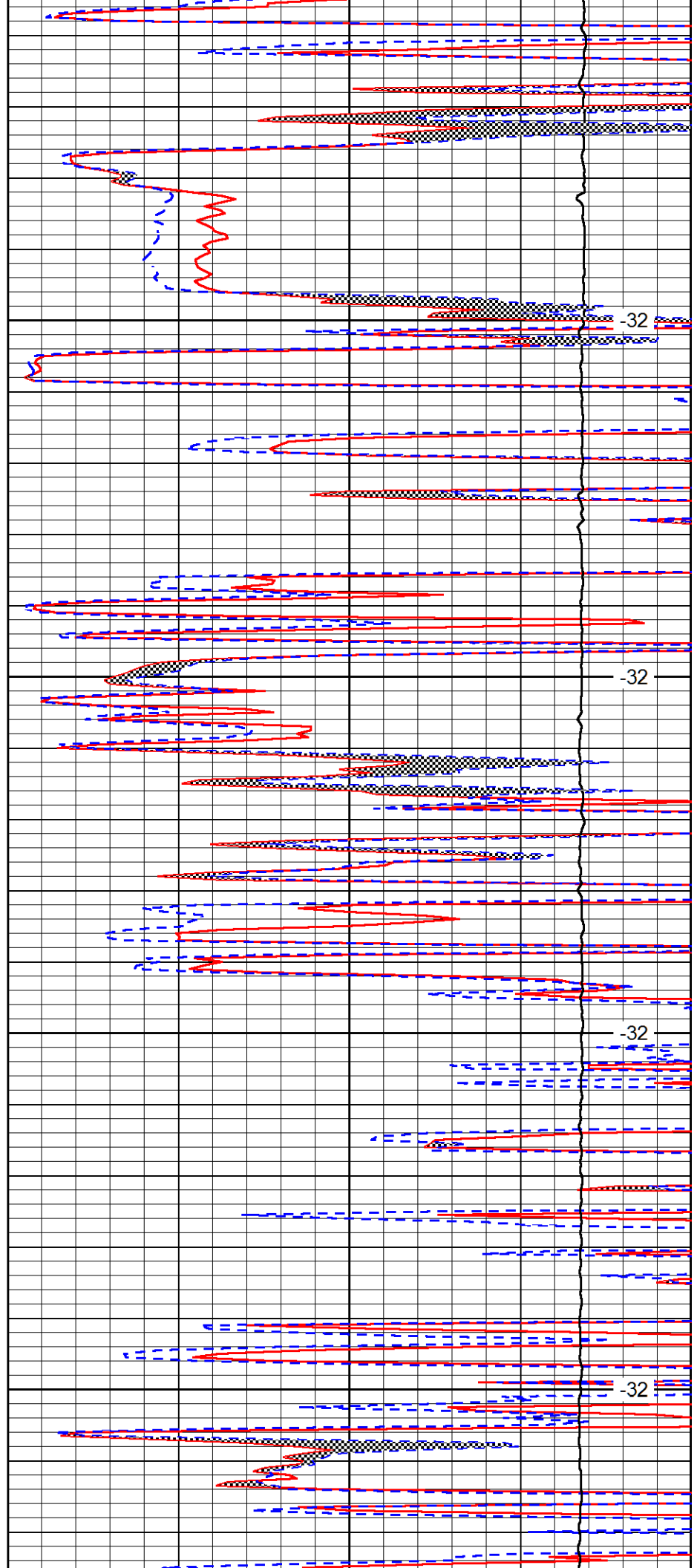


4400

4450

4500

4550

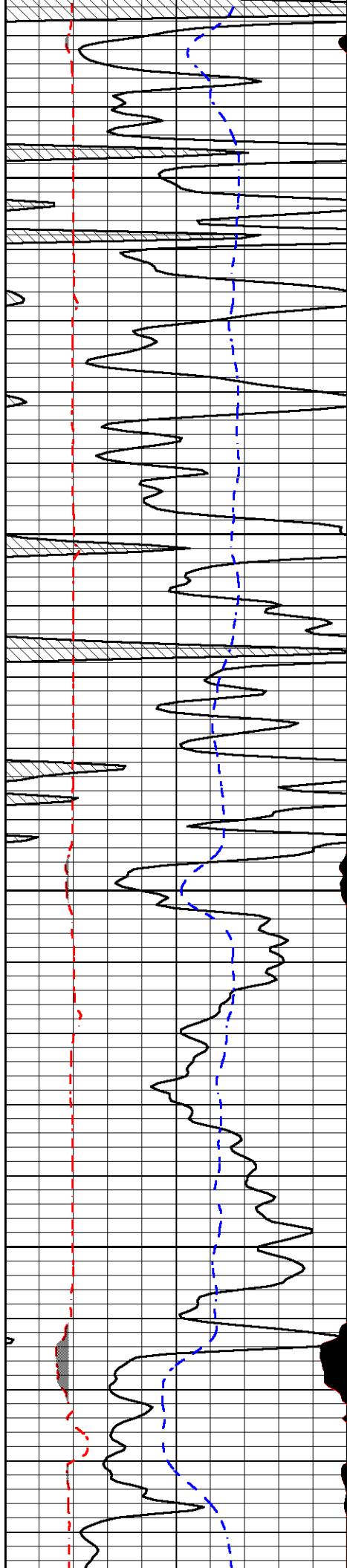


-32

-32

-32

-32

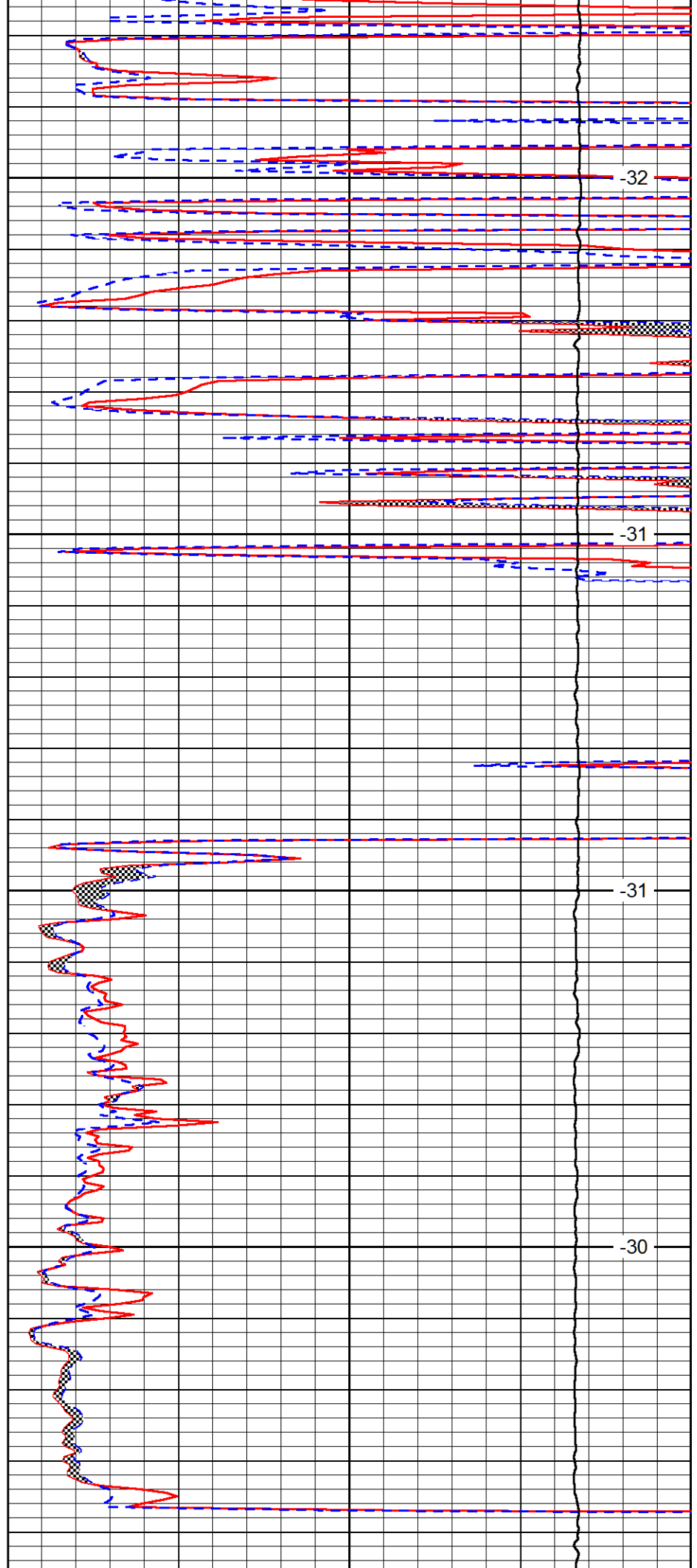


4600

4650

4700

4750

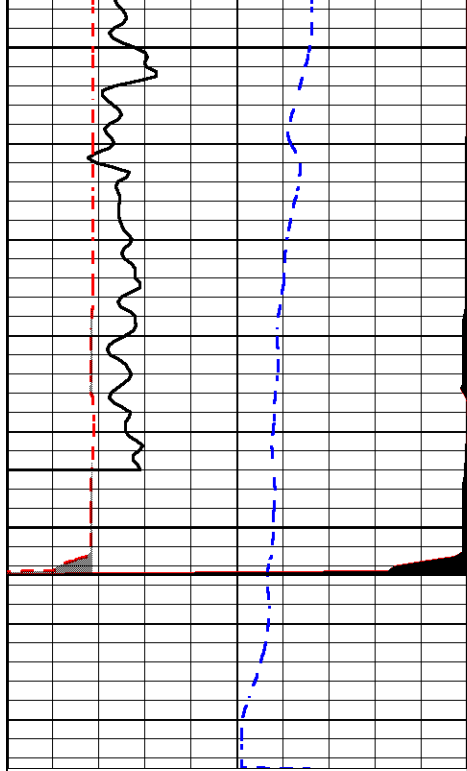


-32

-31

-31

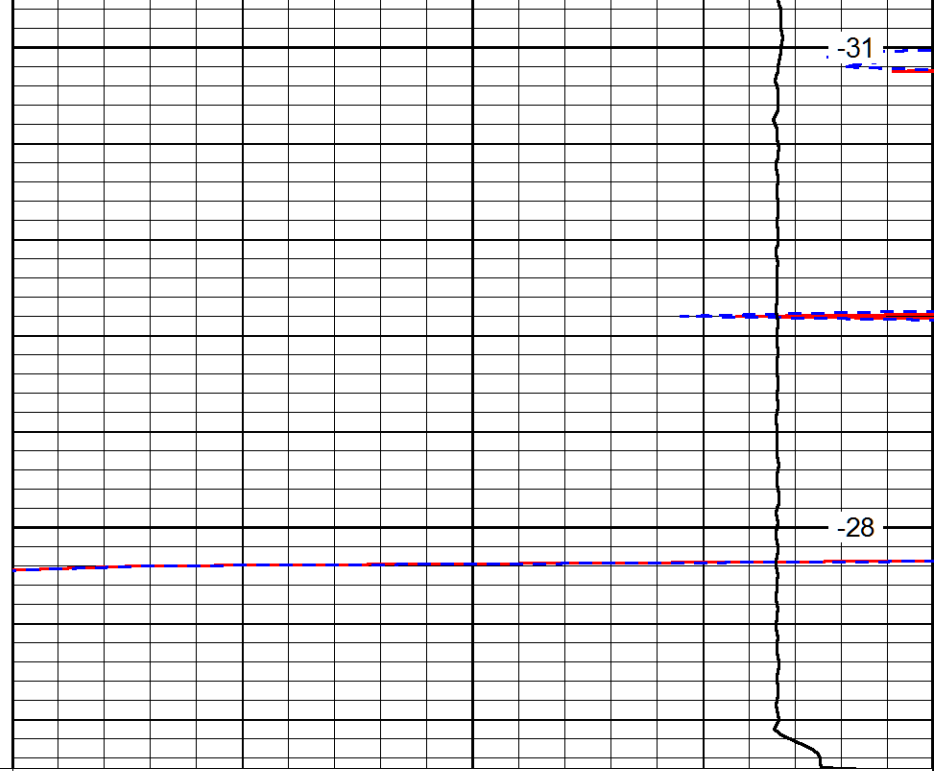
-30



0	Gamma Ray	150
6	MCAL (GAPI)	16
2.875	Mud Cake (GAPI)	7.875
-200	SP (mV)	0

4800

4850



0	Micro Inverse 1 X 1	40
0	Micro Normal 2"	40
10000	Line Weight	0

-31

-28

LSPD