



**MIDWEST SURVEYS**  
 LOGGING - PERFORATING - CONSULTING SERVICES  
 P.O. Box 68, Osawatomie, KS 66064  
 913 / 755 - 2128

**GAMMA RAY / NEUTRON / CCL**

File No.

Company: Bobcat Oilfield Services, Inc.  
 Well: Boy Scout No. W5-13

Field: Paola - Rantoul

County: Miami

State: Kansas

Location: 4620' FSL & 4290' FEL  
 E12-NW-NW

Sec. 14 Twp. 17s Rge. 21e

Permanent Datum: GL  
 Log Measured From: GL  
 Drilling Measured From: GL

Elevation: NA  
 K.B. NA  
 D.F. NA  
 G.L. NA

Date: 03-19-2014

Run Number: One

Depth Driller: 663.2

Depth Logger: 662.2

Bottom Logged Interval: 20.0

Top Log Interval: Full

Fluid Level: Full

Type Fluid: Water

Density / Viscosity: NA

Salinity - PPM Cl: NA

Max. Recorded Temp: NA

Estimated Cement Top: 0.0

Equipment No.: 102

Recorded By: Gary Vahedich

Witnessed By: Bob Eberhart

BORE-HOLE RECORD			
RUN No.	BIT SIZE	FROM	TO
One	8.75"	0.0	20.0
Two	5.625"	20.0	663.0

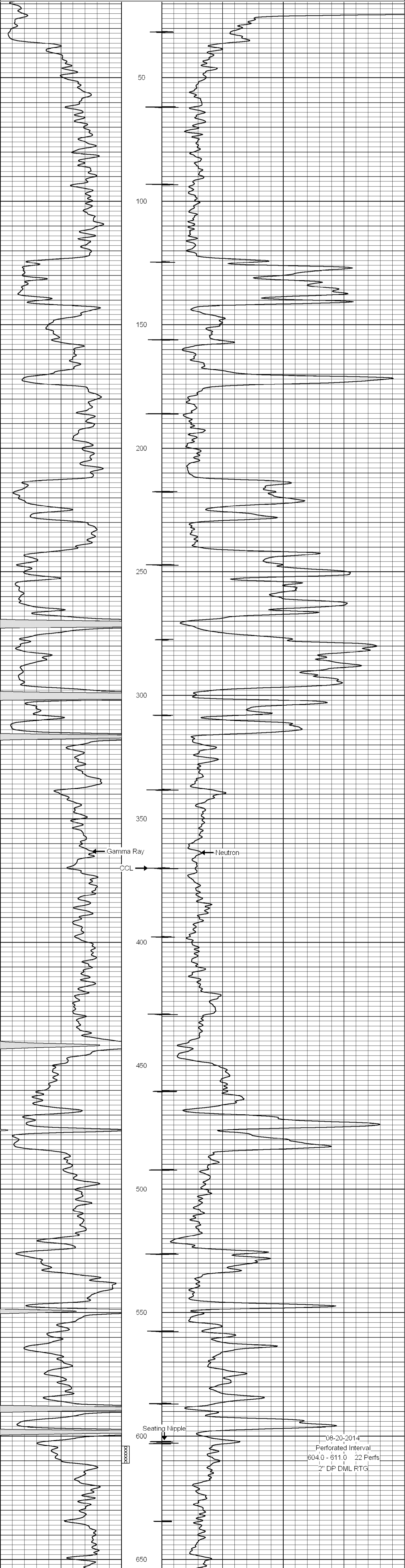
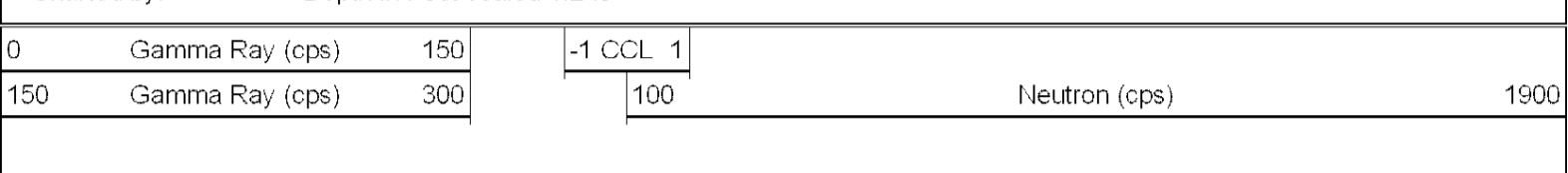
CASING RECORD			
RUN No.	BIT SIZE	FROM	TO
One	8.75"	0.0	20.0
Two	5.625"	20.0	663.0

<<< Fold Here >>>

All interpretations are opinions based on inferences from electrical or other measurements and we cannot and do not guarantee the accuracy or correctness of any interpretation, and we shall not, except in the case of gross or willful negligence on our part, be liable or responsible for any loss, costs, damages, or expenses incurred or sustained by anyone resulting from any interpretation made by any of our officers, agents or employees. These interpretations are also subject to our general terms and conditions set out in our current Price Schedule.

Drilling Contractor :  
 Dale Jackson Production Company

Database File: bs5w-13.db  
 Dataset Pathname: pass1  
 Presentation Format: gr-n-ccl  
 Dataset Creation: Wed Mar 19 11:43:32 2014 by Log SCH 111116  
 Charted by: Depth in Feet scaled 1:240



08-20-2014  
 Perforated Interval  
 604.0 - 611.0 22 Perfs  
 2" DP DML RTG