



MIDWEST SURVEYS
 LOGGING - PERFORATING - CONSULTING SERVICES
 P.O. Box 68, Osawatomie, KS 66064
 913.755.2128

GAMMA RAY / NEUTRON / CCL

File No.

Company **Altavista Energy, Inc.**

Well **East Goetz No. A-34**

Field **Paola - Rantoul**

County **Miami** State **Kansas**

Location **4455' FSL & 5115' FEL
NW-SW-NW-NW**

Other Services
Perforate

Sec. **9** Twp. **18S** Rge. **22E**

Permanent Datum **GL** Elevation **883'**

Log Measured From **GL**

Drilling Measured From **GL**

Elevation
K.B. NA
D.F. NA
G.L. 883'

API # 15-121-30,606

Date

Run Number **One**

Depth Driller **660.0**

Depth Logger **607.3**

Bottom Logged Interval **606.3**

Top Log Interval **20.0**

Fluid Level **Full**

Type Fluid

Density / Viscosity **Water**

Salinity - PPM Cl **NA**

Max Recorded Temp **NA**

Estimated Cement Top **0.0**

Equipment No. **107** Location **Osawatomie**

Recorded By **Steve Winkisch**

Witnessed By **Doug Evans**

Recorded By

Witnessed By

Recorded By

Witnessed By

Recorded By

Witnessed By

Recorded By

Witnessed By

Recorded By

Witnessed By

BORE-HOLE RECORD

NO. BIT FROM TO SIZE WGT. FROM TO

One 9.875" 0.0 25.0 7.00" 17.0# 0.0 25.0

Two 5.625" 25.0 690.0 2.875" 6.5# 0.0 640.90

CASING RECORD

NO. BIT FROM TO SIZE WGT. FROM TO

One 9.875" 0.0 25.0 7.00" 17.0# 0.0 25.0

Two 5.625" 25.0 690.0 2.875" 6.5# 0.0 640.90

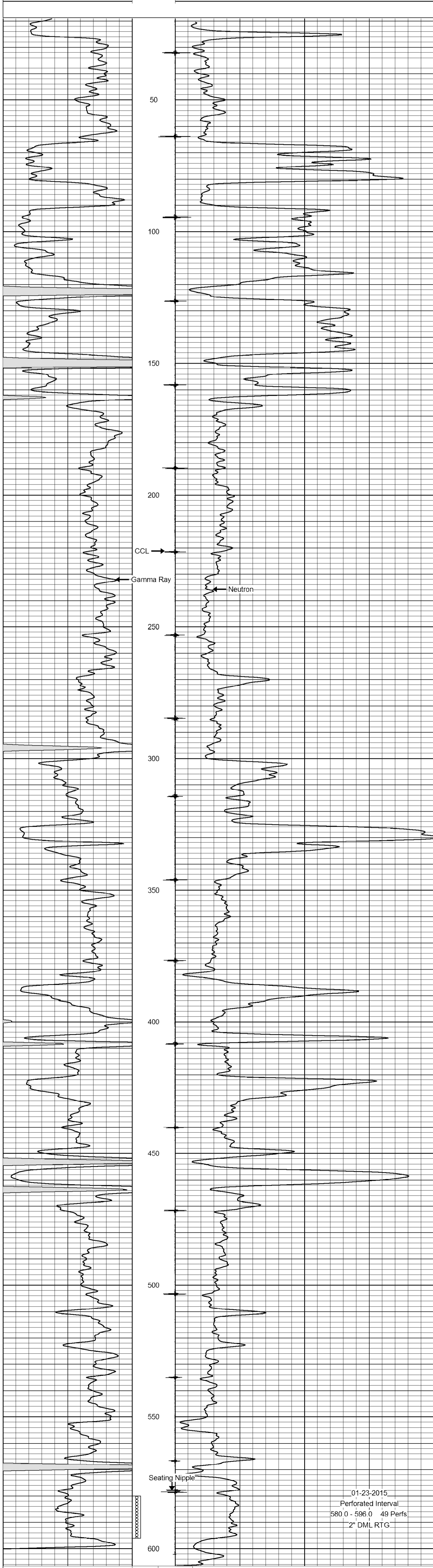
<<< Fold Here >>>

All interpretations are opinions based on inferences from electrical or other measurements and we cannot and do not guarantee the accuracy or correctness of any interpretation, and we shall not, except in the case of gross or willful negligence on our part, be liable or responsible for any loss, costs, damages, or expenses incurred or sustained by anyone resulting from any interpretation made by any of our officers, agents or employees. These interpretations are also subject to our general terms and conditions set out in our current Price Schedule.

Comments

Drilling Contractor :
Town Oilfield Services, Inc.

Database File: goetz east 34a.db
 Dataset Pathname: pass1
 Presentation Format: gr-n-ccl
 Dataset Creation: Mon Sep 15 11:42:34 2014 by Log SCH 111116
 Charted by:



01-23-2015
 Perforated Interval
 580.0 - 596.0 49 Perfs
 2" DML RTG

