



**MIDWEST SURVEYS**  
 LOGGING - PERFORATING - CONSULTING SERVICES  
 P.O. Box 88, Osawatomie, KS 68064  
 913.755.2128

**GAMMA RAY / NEUTRON / CCL**

File No.

Company **Altavista Energy, Inc**  
 Well **Howell - Gorges No. A1-2**  
 Field **Paola / Rantoul**  
 County **Miami** State **Kansas**

Location **260' FSL & 3370' FEL**  
**SE-SW-SE-SW**

Other Services **Perforate**

Sec. 1 Twp. 18s Rge. 21e  
 Permanent Datum **GL** Elevation **995'**  
 Log Measured From **GL**  
 Drilling Measured From **GL**

Date **04-01-2016**

Run Number **One**  
 Depth Driller **720.0**  
 Depth Logger **683.0**  
 Bottom Logged Interval **682.0**  
 Top Log Interval **20.0**  
 Fluid Level **Full**

Type Fluid **Water**  
 Density / Viscosity **NA**  
 Salinity - PPM Cl **NA**  
 Max Recorded Temp **NA**  
 Estimated Cement Top **0.0**

Equipment No **102** Location **Osawatomie**  
 Recorded By **Gary Windisch**  
 Witnessed By **Doug Evans**

BORE-HOLE RECORD				CASINGS RECORD				
RUN	NO	BIT	FROM	TO	SIZE	WGT.	FROM	TO
One		9.875"	0.0	20.0	7.00"	17.0#	0.0	20.0
Two		5.825"	20.0	720.0	2.875"	6.5#	0.0	714.6
							At	682.0

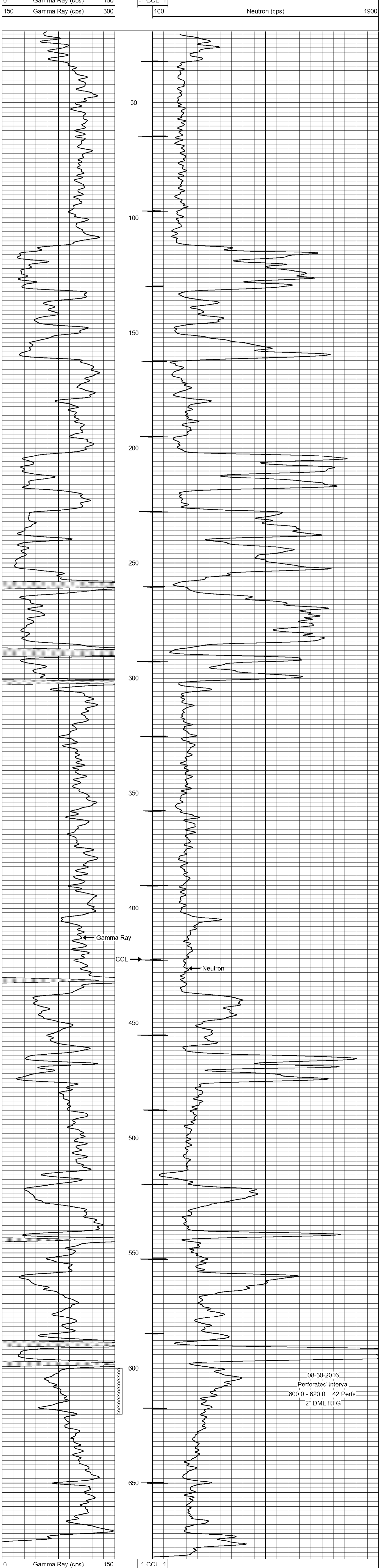
<<< Fold Here >>>

All interpretations are opinions based on inferences from electrical or other measurements and we cannot and do not guarantee the accuracy or correctness of any interpretation, and we shall not, except in the case of gross or willful negligence on our part, be liable or responsible for any loss, costs, damages, or expenses incurred or sustained by anyone resulting from any interpretation made by any of our officers, agents or employees. These interpretations are also subject to our general terms and conditions set out in our current Price Schedule.

Comments

Drilling Contractor :  
 Town Oilfield Services, Inc.

Database File: gorges 2aih.db  
 Dataset Pathname: pass1  
 Presentation Format: gr-n-ccl  
 Dataset Creation: Fri Apr 01 12:31:25 2016 by Log SCH 111116  
 Charted by: Depth in Feet scaled 1:240



0 Gamma Ray (cps) 150  
 150 Gamma Ray (cps) 300  
 -1 CCL 1  
 100 Neutron (cps) 1900