



MIDWEST SURVEYS
 LOGGING - PERFORATING - CONSULTING SERVICES
 P.O. Box 68, Osawatomie, KS 66064
 913 / 755 - 2128

GAMMA RAY / NEUTRON / CCL

File No:

Company **JTC Oil, Inc.**

Well **West Waddle No. 1-10**

Field **Paola / Rantoul**

County **Miami** State **Kansas**

Location **710 FSL & 2900 FEL**

Sec. **23** Twp. **18S** Rge. **21E**

Permanent Datum **GL** Elevation **879'**

Log Measured From **GL** K.B. NA

Drilling Measured From **GL** D.F. NA

Date **12-09-2021** Elevation **GL, 879'**

Run Number **One**

Depth Driller **580.0**

Depth Logger **545.0**

Bottom Logged Interval **544.0**

Top Log Interval **20.0**

Fluid Level **Full**

Type Fluid **Water**

Density / Viscosity **NA**

Salinity - PPM Cl **NA**

Max Recorded Temp **NA**

Estimated Cement Top **0.0**

Equipment No. **107** Location **Osawatomie**

Recorded By **Steve Windisch**

Witnessed By **Austin Ellis**

BORE-HOLE RECORD			
Run No.	BIT	FROM	TO
One	9.875"	0.0	20.0
Two	5.785"	20.0	530.0

CASING RECORD			
Run No.	BIT	FROM	TO
One	9.875"	0.0	20.0
Two	5.785"	20.0	530.0

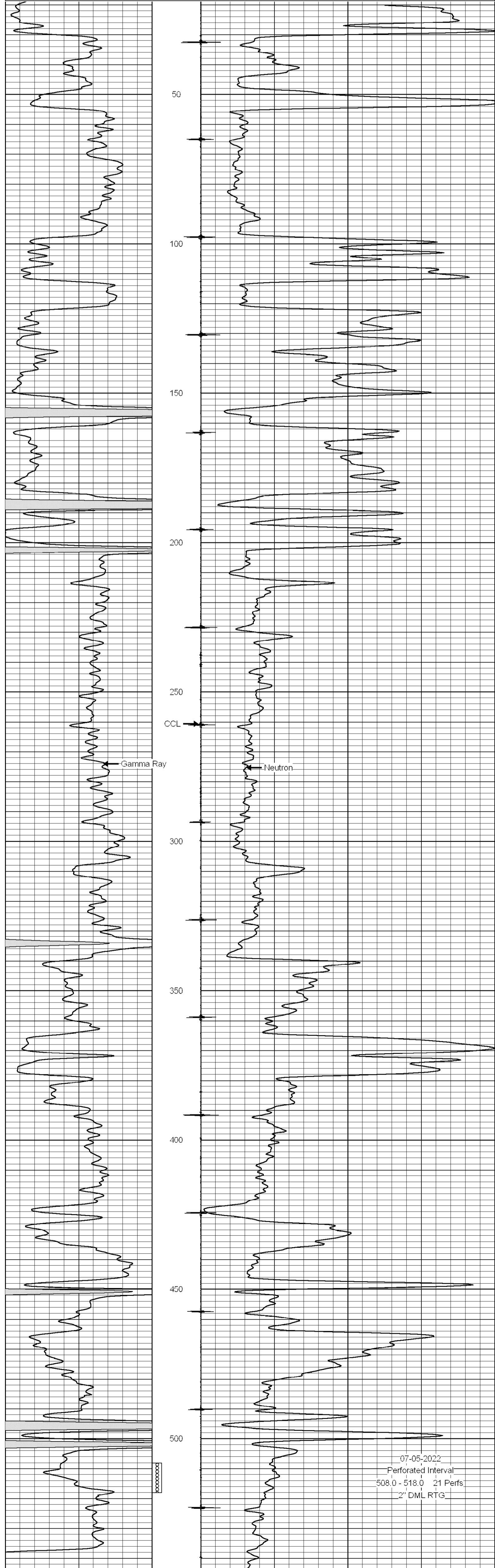
<<< Fold Here >>>

All interpretations are opinions based on inferences from electrical or other measurements and we cannot and do not guarantee the accuracy or correctness of any interpretation, and we shall not, except in the case of gross or willful negligence on our part, be liable or responsible for any loss, costs, damages, or expenses incurred or sustained by anyone resulting from any interpretation made by any of our officers, agents or employees. These interpretations are also subject to our general terms and conditions set out in our current Price Schedule.

Comments

Drilling Contractor :
 JTC Oil, Inc.

Database File: west waddle 10i.db
 Dataset Pathname: pass1
 Presentation Format: gr-n-ccl
 Dataset Creation: Thu Dec 09 09:17:00 2021 by Log SCH 111116
 Charted by: Depth in Feet scaled 1:240



07-05-2022
 Perforated Interval
 508.0 - 518.0 21 Perfs
 2" DML RTG

