



DUAL INDUCTION LOG

Company PALOMINO PETROLEUM
 Well THE FOUNTAINHEAD #1
 Field SARGENT SOUTHEAST
 County NESS
 State KS

Company PALOMINO PETROLEUM
 Well THE FOUNTAINHEAD #1
 Field SARGENT SOUTHEAST
 County NESS State KS

Location: API #: 15 135 26189
 100' FSL & 1031' FEL
 SEC 18 TWP 16S RGE 24W
 Permanent Datum Ground Level Elevation 2546
 Log Measured From KB 8' AGL
 Drilling Measured From KB
 Other Services
 CDNL
 ML
 Elevation
 K.B. 2554
 D.F. 2552
 G.L. 2546

Date	10/03/22
Run Number	One
Depth Driller	4650
Depth Logger	4651
Bottom Logged Interval	4649
Top Log Interval	00
Casing Driller	8 5/8" @ 221
Casing Logger	221
Bit Size	7 7/8"
Type Fluid in Hole	Chemical
Density / Viscosity	9.1/59
pH / Fluid Loss	11.0/5.4
Source of Sample	Pit
Rm @ Meas. Temp	.6@80degf
Rmf @ Meas. Temp	.45@80degf
Rmc @ Meas. Temp	.72@80degf
Source of Rmf / Rmc	Calculated
Rm @ BHT	.39@121degf
Time Circulation Stopped	2:30 P.M.
Time Logger on Bottom	5:30 P.M
Maximum Recorded Temperature	121degf
Equipment Number	T605
Location	Hays, KS
Recorded By	GUS PFANENSTIEL
Witnessed By	KEATON JONES

<<< Fold Here >>>

All interpretations are opinions based on inferences from electrical or other measurements and we cannot and do not guarantee the accuracy or correctness of any interpretation, and we shall not, except in the case of gross or willful negligence on our part, be liable or responsible for any loss, costs, damages, or expenses incurred or sustained by anyone resulting from any interpretation made by any of our officers, agents or employees. These interpretations are also subject to our general terms and conditions set out in our current Price Schedule.

Comments

3 WEST OF RANSOM 1 NORTH, 1/4 WEST
 NORTH INTO.
 Thank You for using Gemini Wireline LLC
 785-625-1182



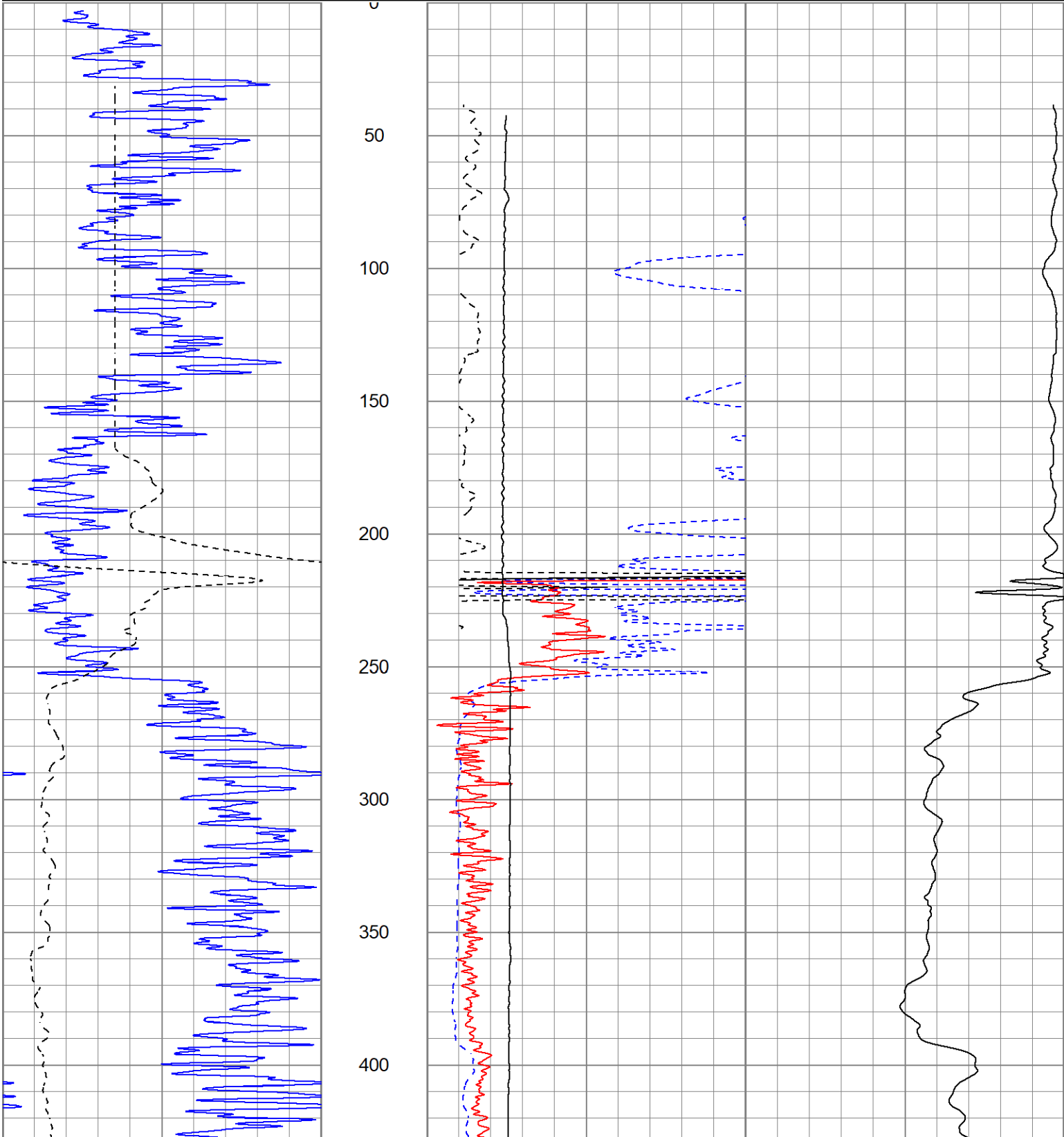
MAIN PASS

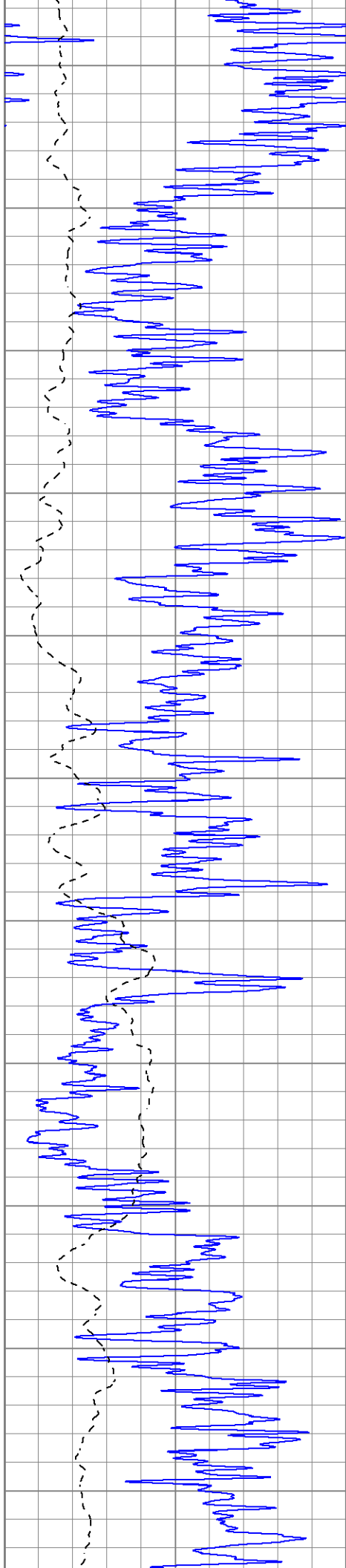
Database File ppthefountainhead#1oh.db
 Dataset Pathname pass4.1
 Presentation Format kdillinn
 Dataset Creation Mon Oct 03 18:56:11 2022
 Charted by Depth in Feet scaled 1:600

0	GR (GAPI)	150
-100	SP (mV)	100

1000	CILD (mmho/m)	0
10000	LTEN (lb)	0

0	RILD (Ohm-m)	50
0	RLL3 (Ohm-m)	50
50	RILD x 10 (Ohm-m)	500
50	RLL3 x 10 (Ohm-m)	500





450

500

550

600

650

700

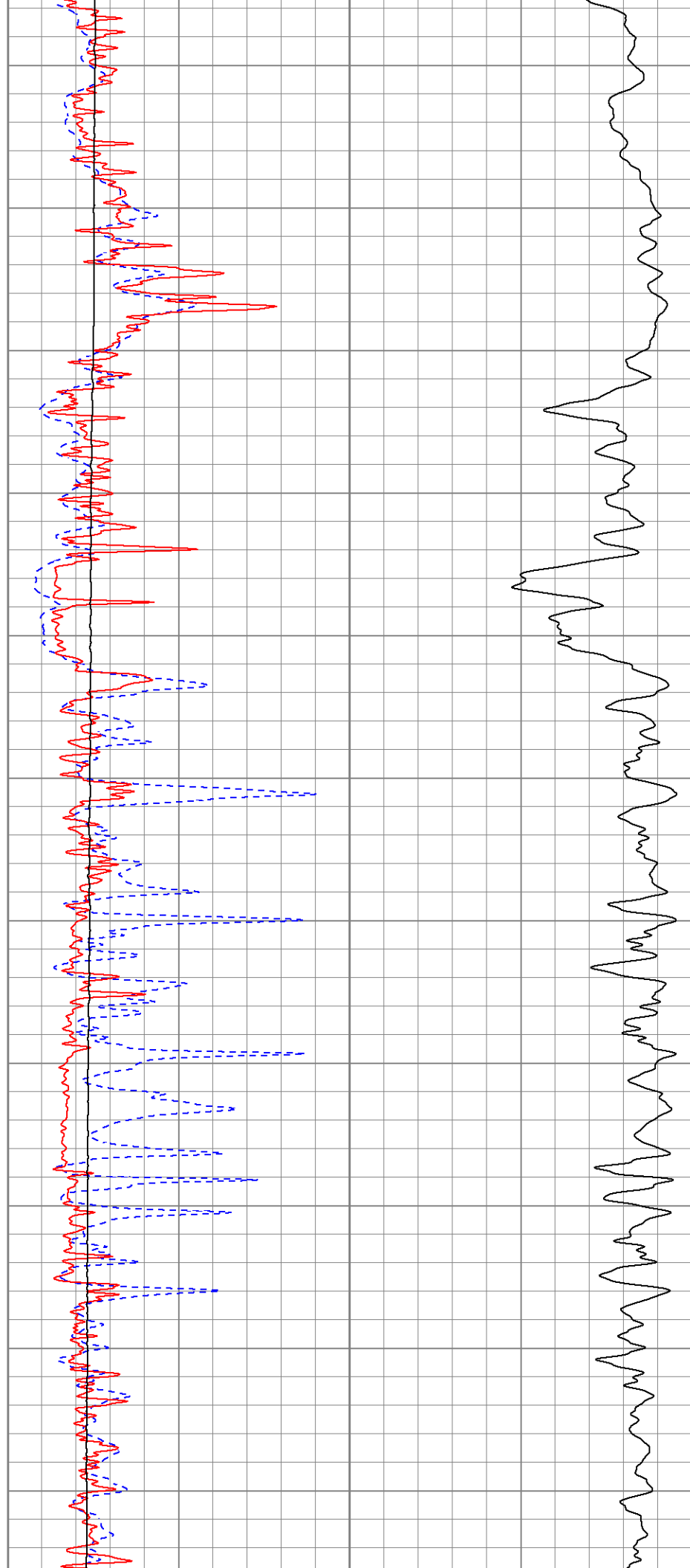
750

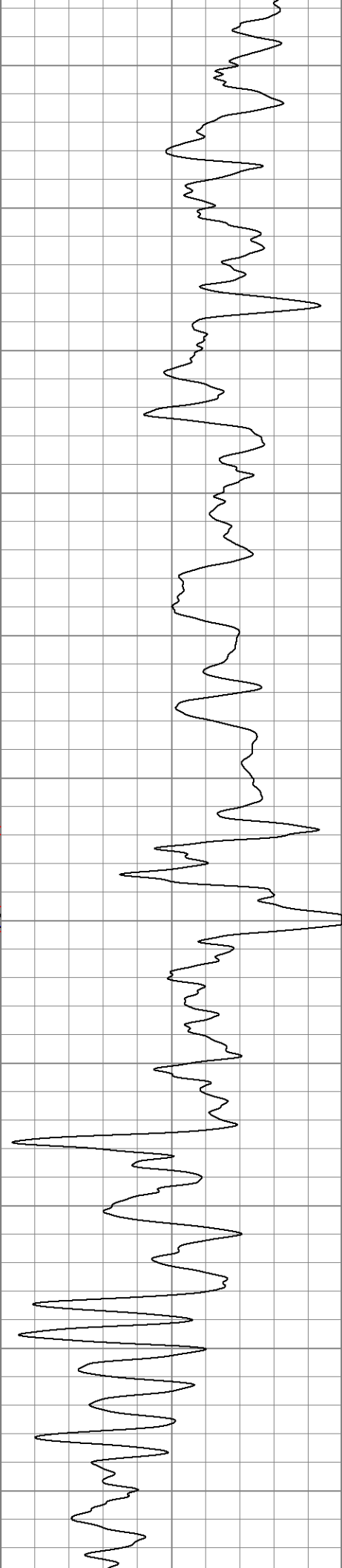
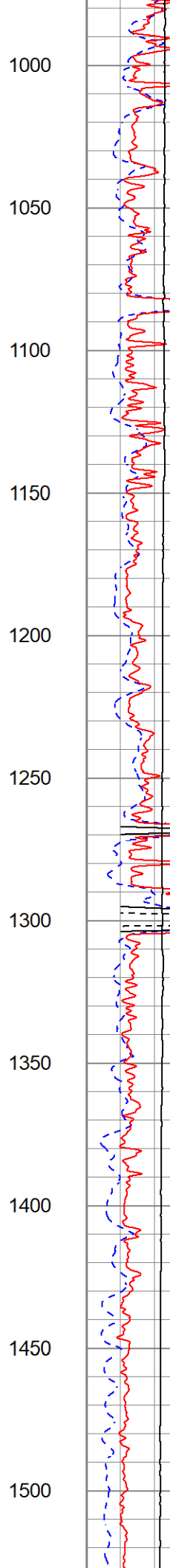
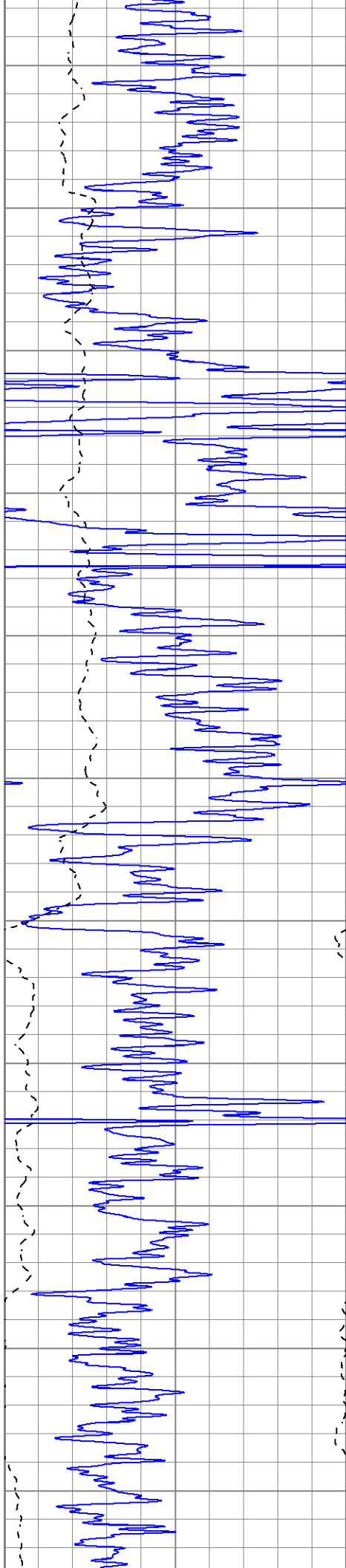
800

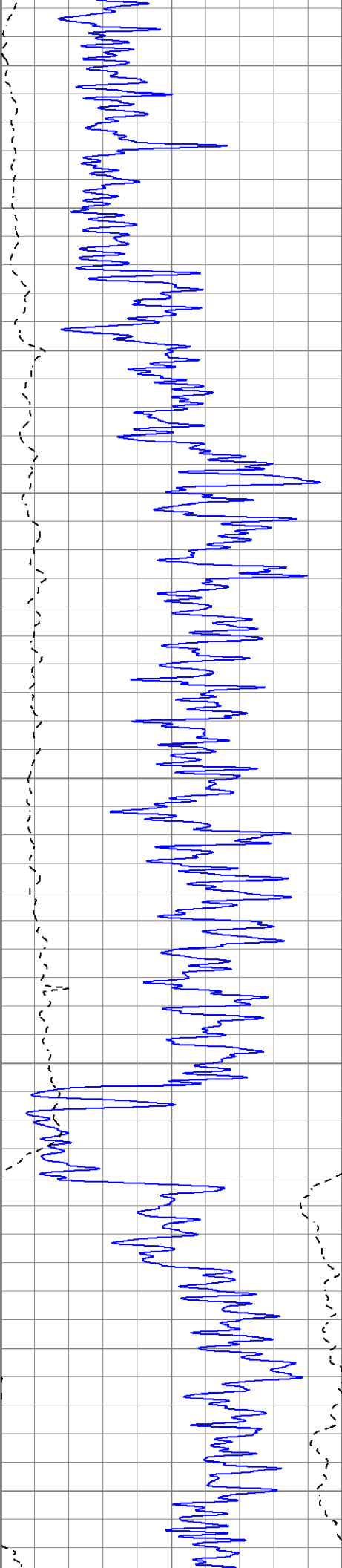
850

900

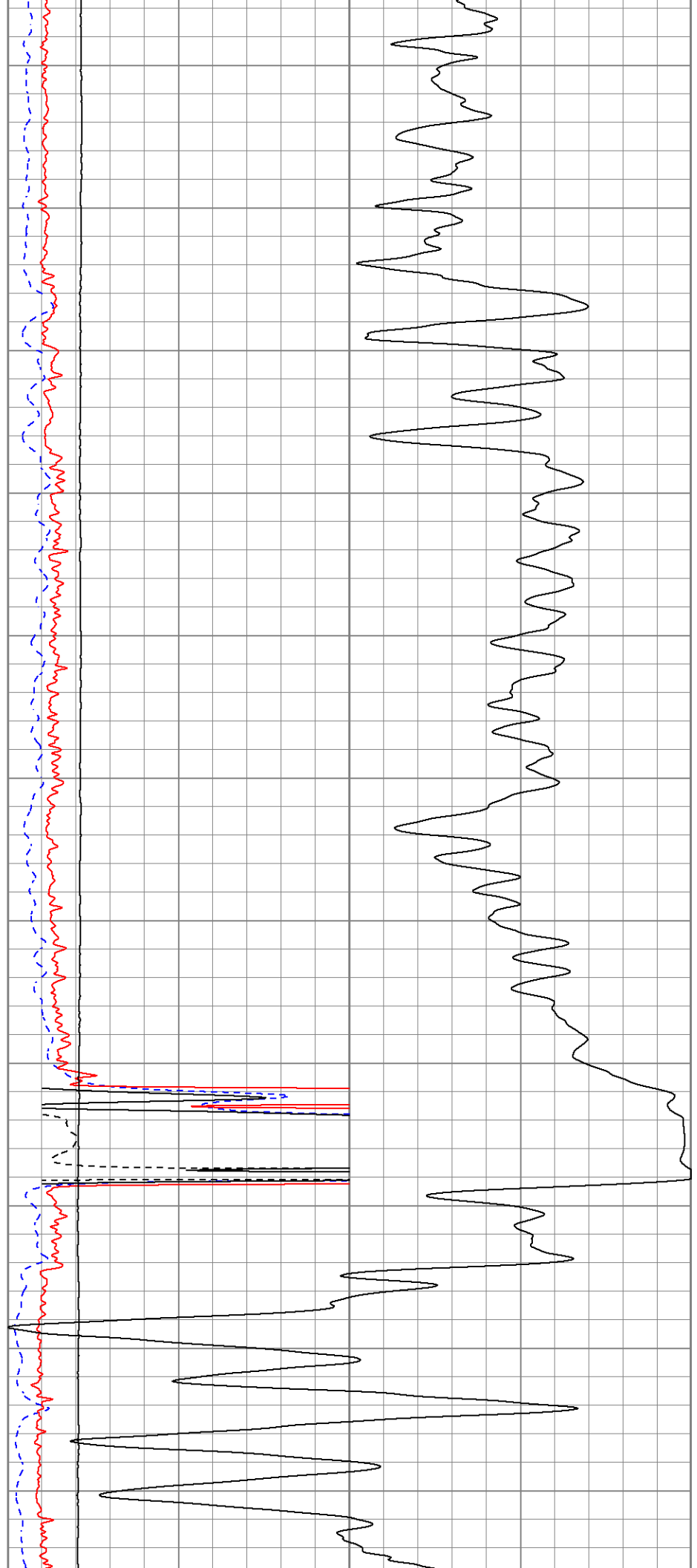
950

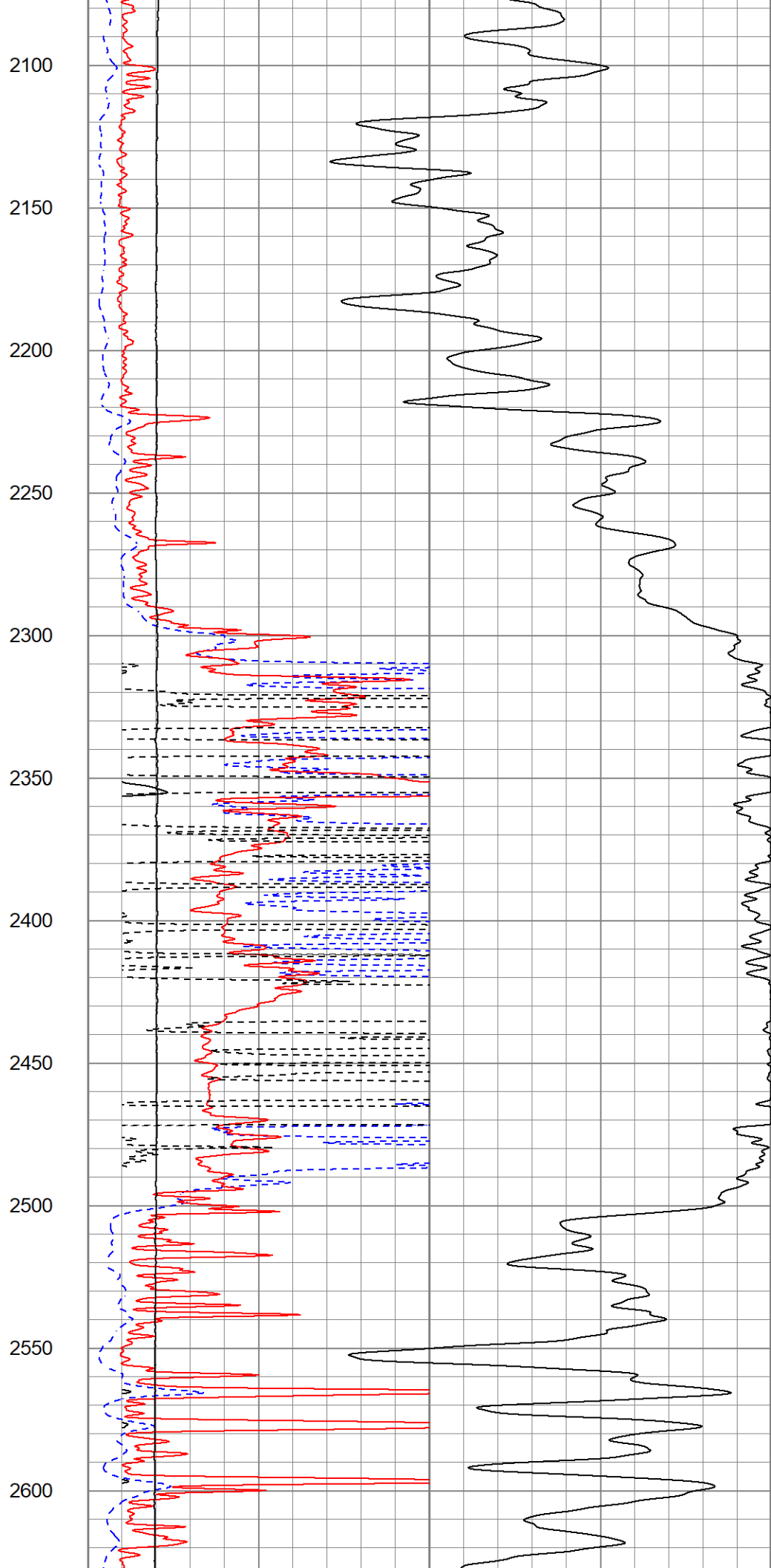
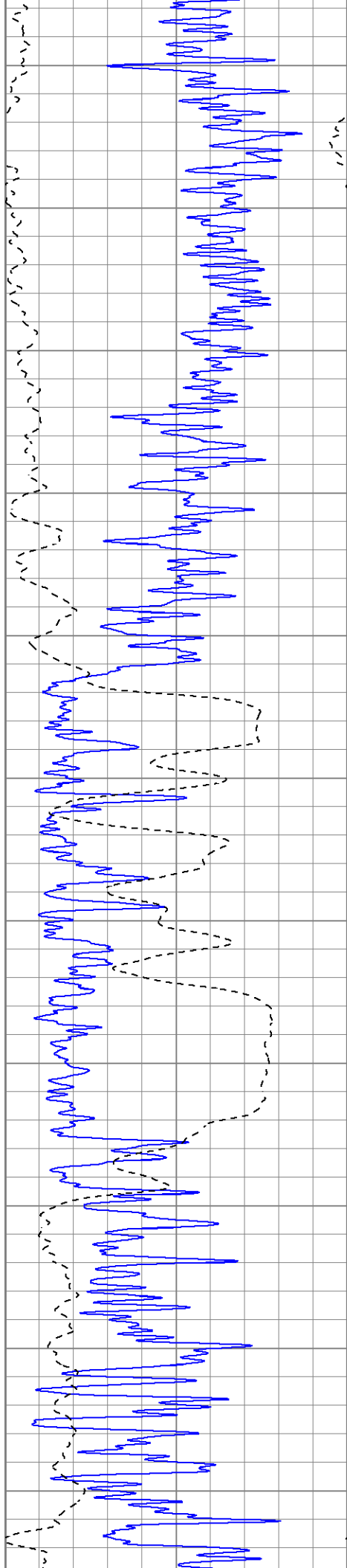


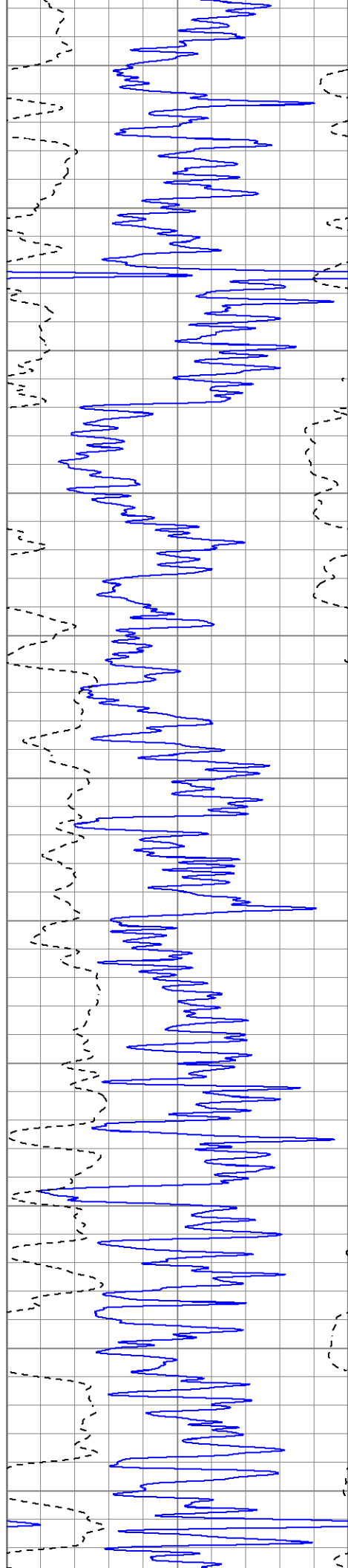




1550
1600
1650
1700
1750
1800
1850
1900
1950
2000
2050







2650

2700

2750

2800

2850

2900

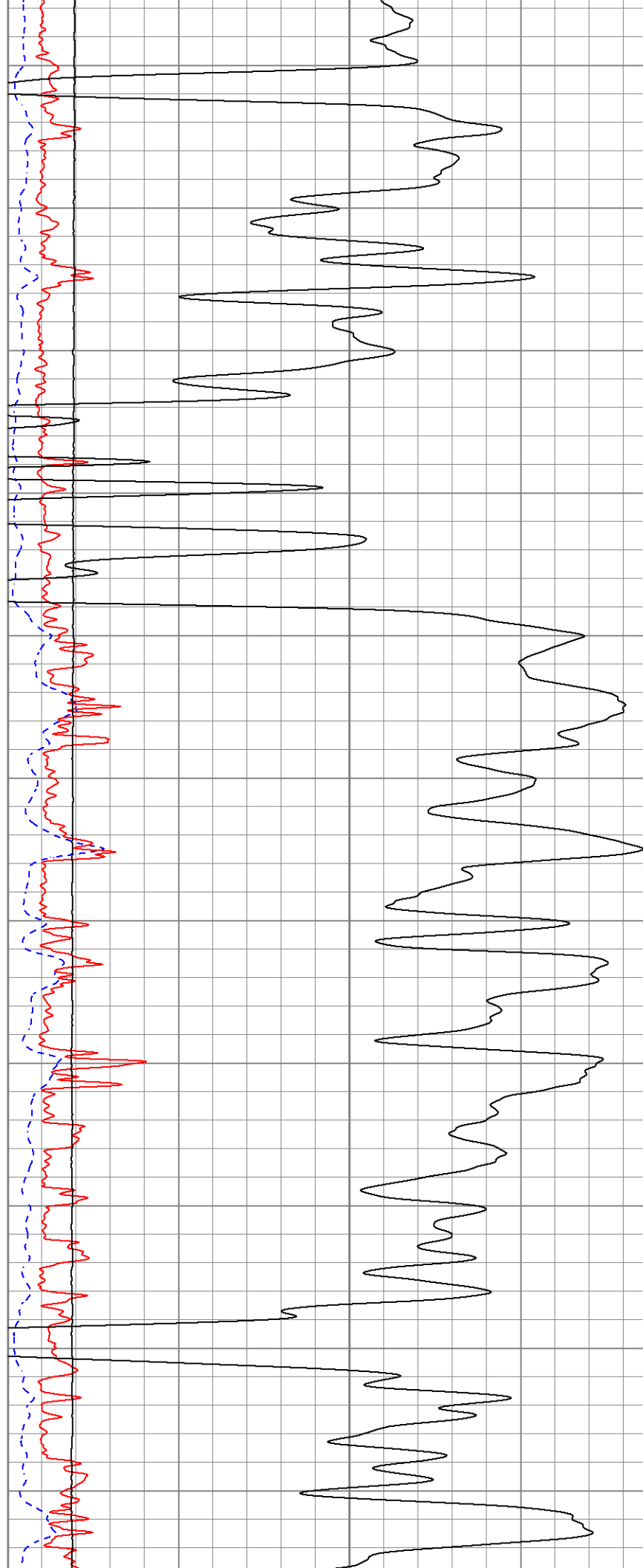
2950

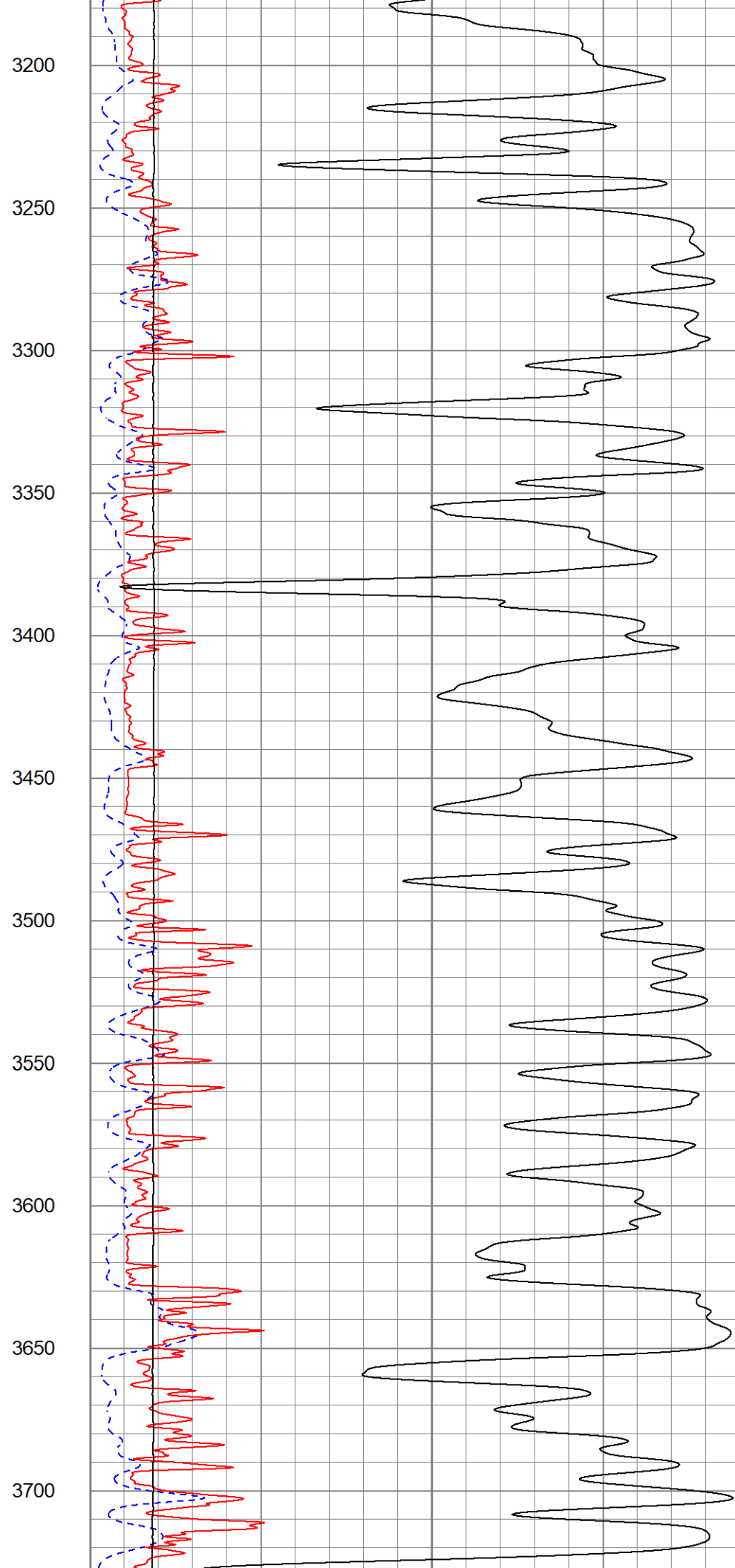
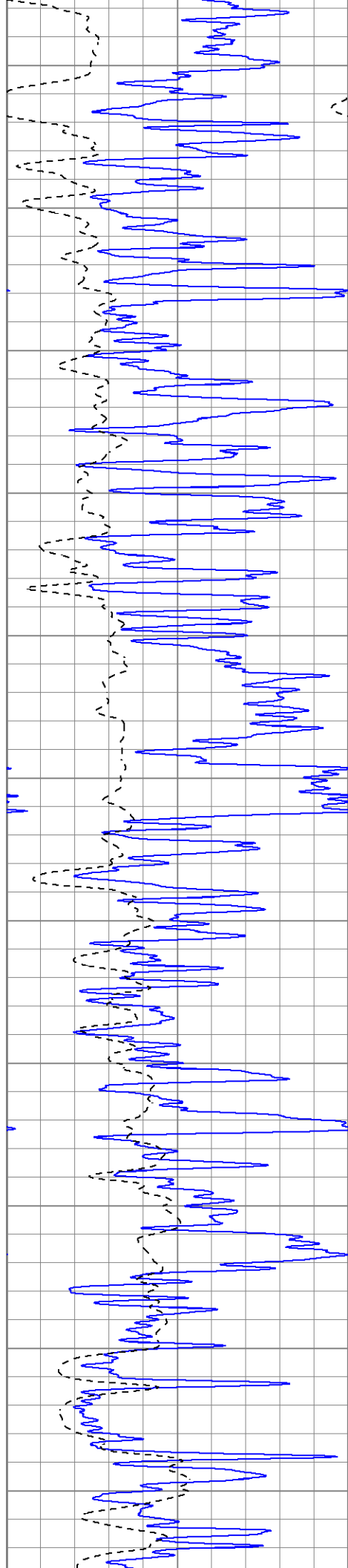
3000

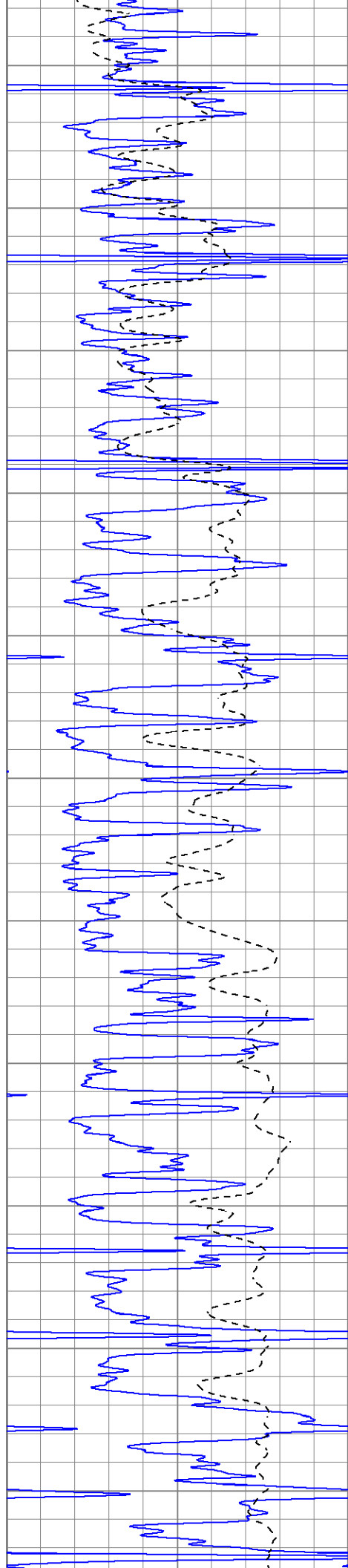
3050

3100

3150







3750

3800

3850

3900

3950

4000

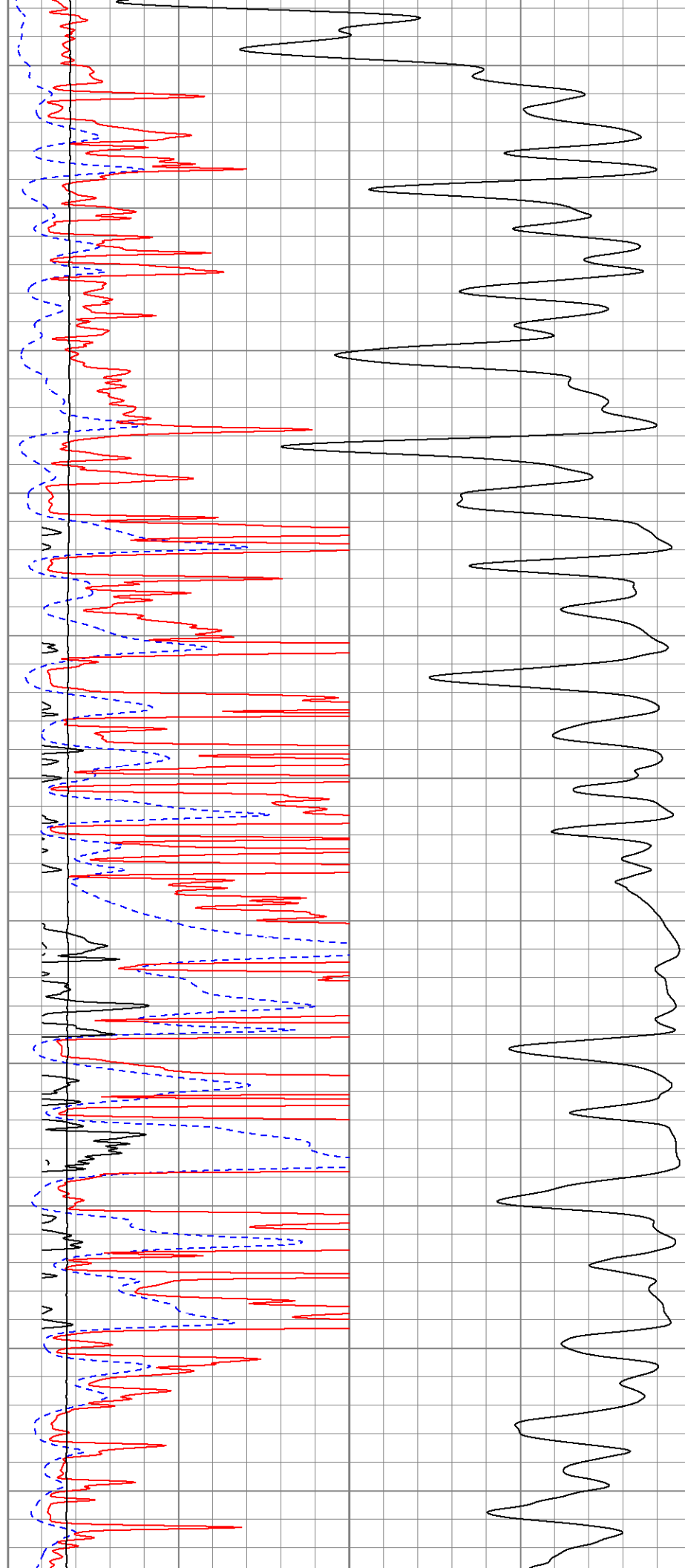
4050

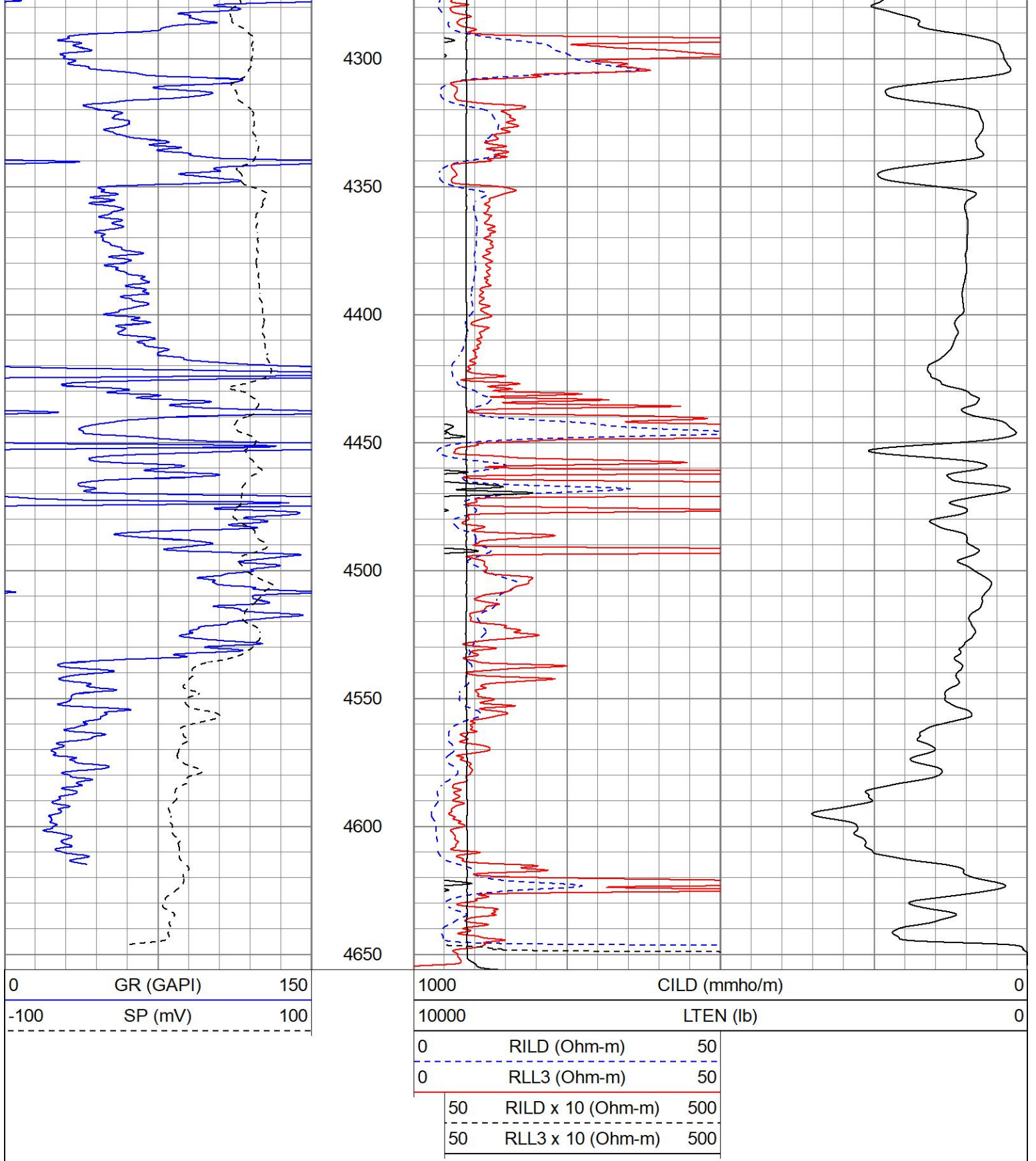
4100

4150

4200

4250



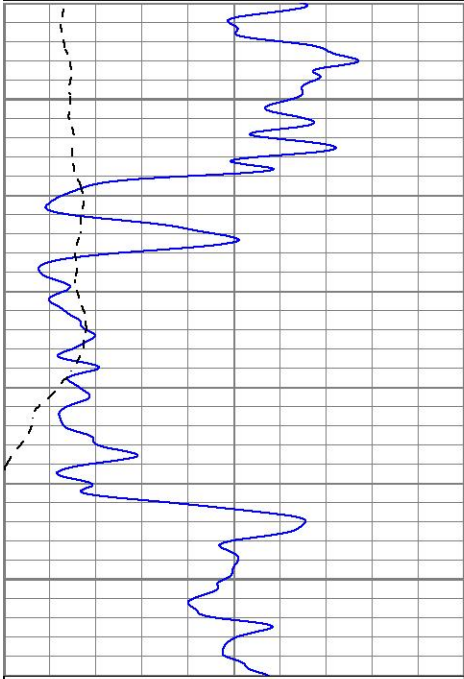


MAIN PASS

Database File ppthefountainhead#1oh.db
 Dataset Pathname pass4.1
 Presentation Format kdil
 Dataset Creation Mon Oct 03 18:56:11 2022

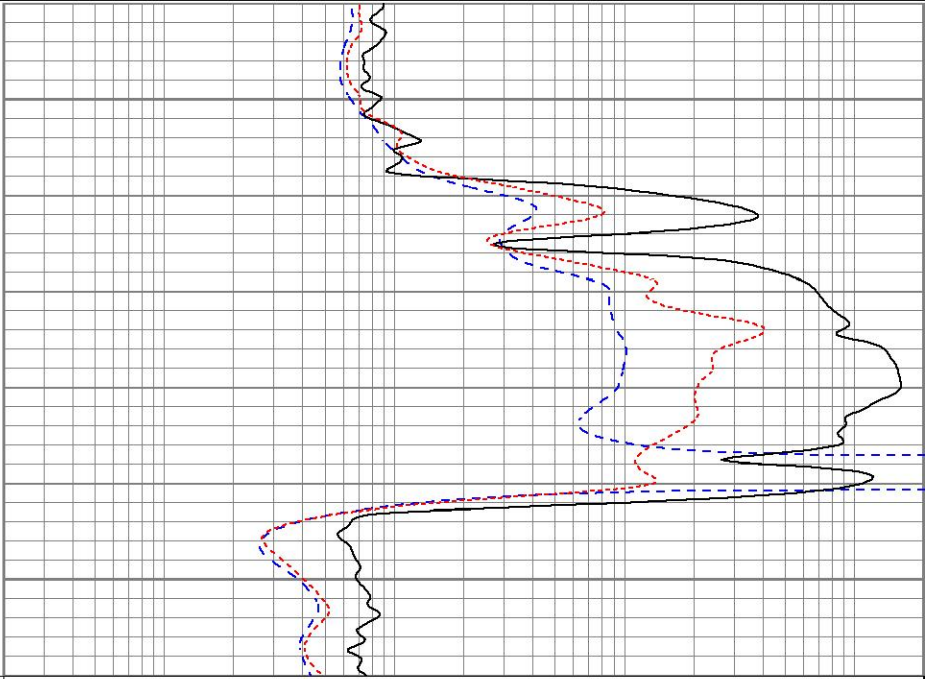
0	GR (GAPI)	150
-100	SP (mV)	100

0.2	RILD (Ohm-m)	2000
0.2	RLL3 (Ohm-m)	2000
0.2	RILM (Ohm-m)	2000



1900

1950



0	GR (GAPI)	150
-100	SP (mV)	100

0.2	RILD (Ohm-m)	2000
0.2	RLL3 (Ohm-m)	2000
0.2	RILM (Ohm-m)	2000

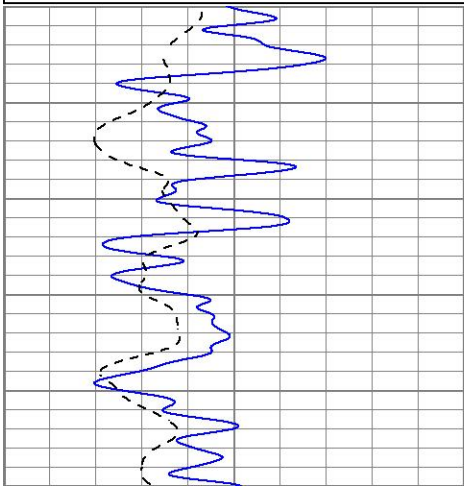


MAIN PASS

Database File ppthefountainhead#1oh.db
 Dataset Pathname pass4.1
 Presentation Format kdil
 Dataset Creation Mon Oct 03 18:56:11 2022
 Charted by Depth in Feet scaled 1:240

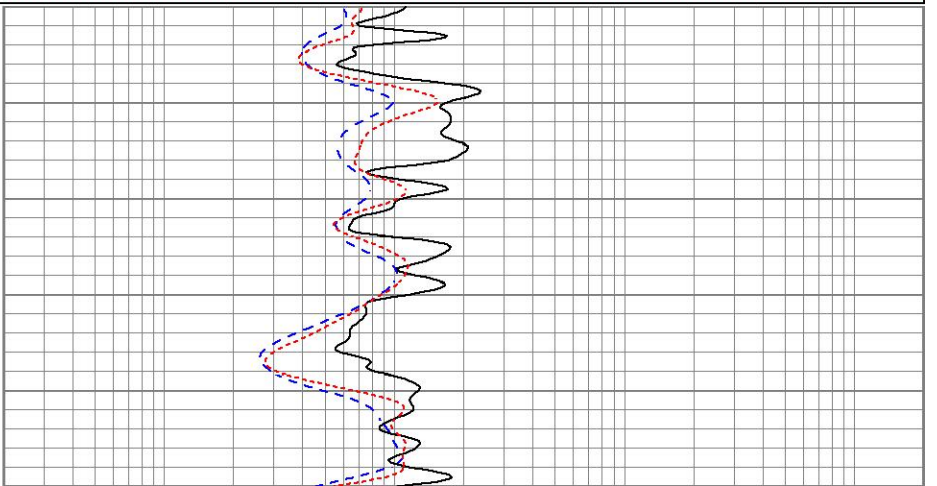
0	GR (GAPI)	150
-100	SP (mV)	100

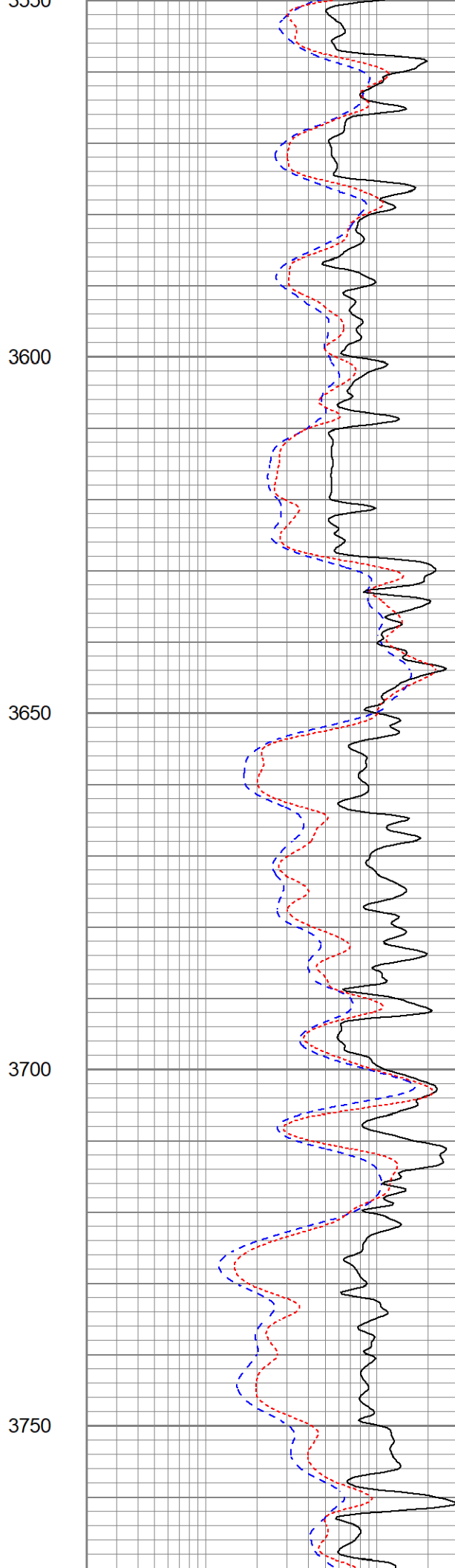
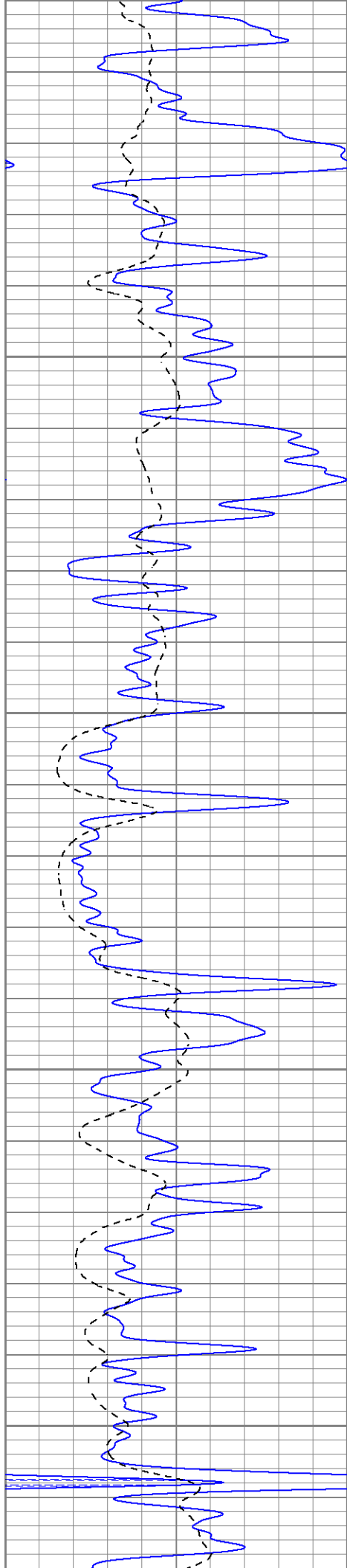
0.2	RILD (Ohm-m)	2000
0.2	RLL3 (Ohm-m)	2000
0.2	RILM (Ohm-m)	2000

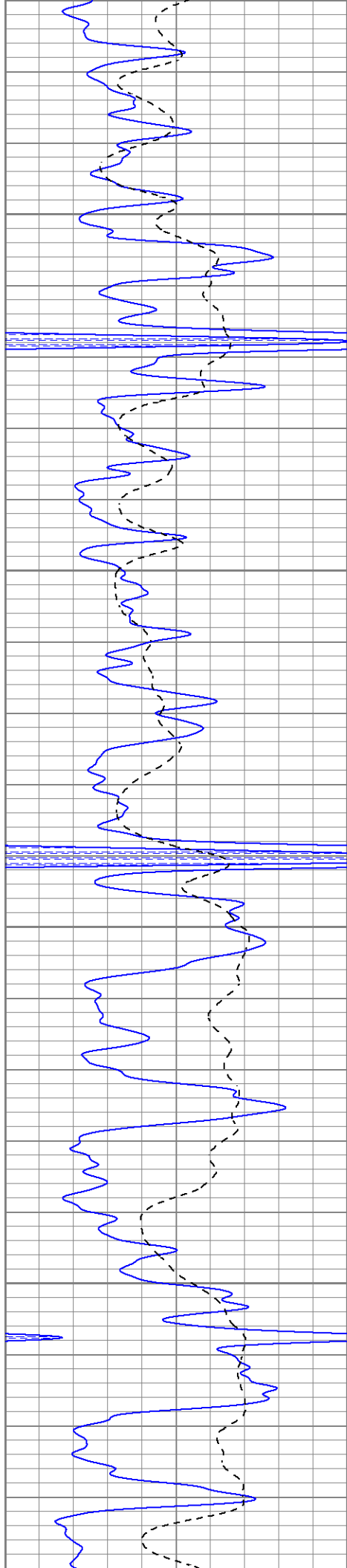


3500

3550





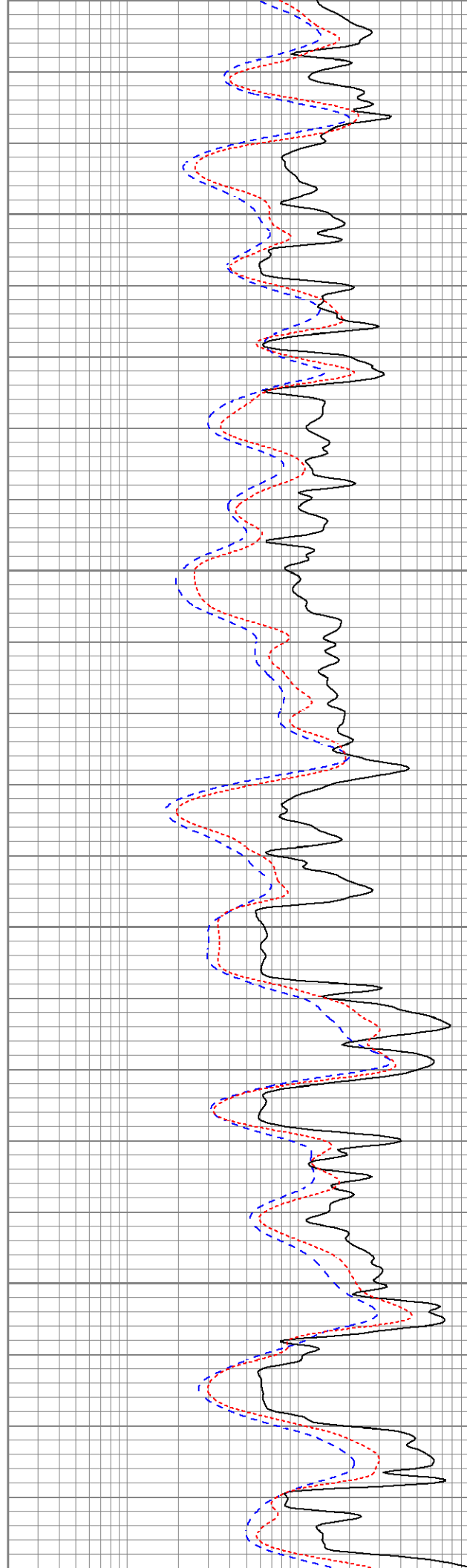


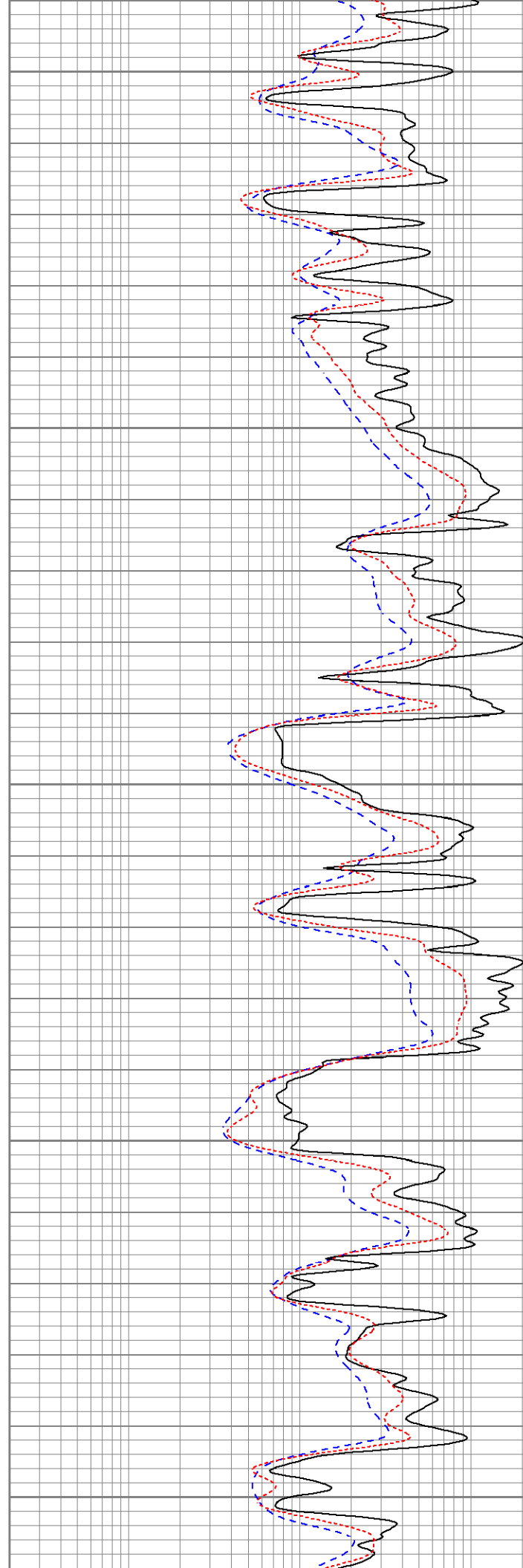
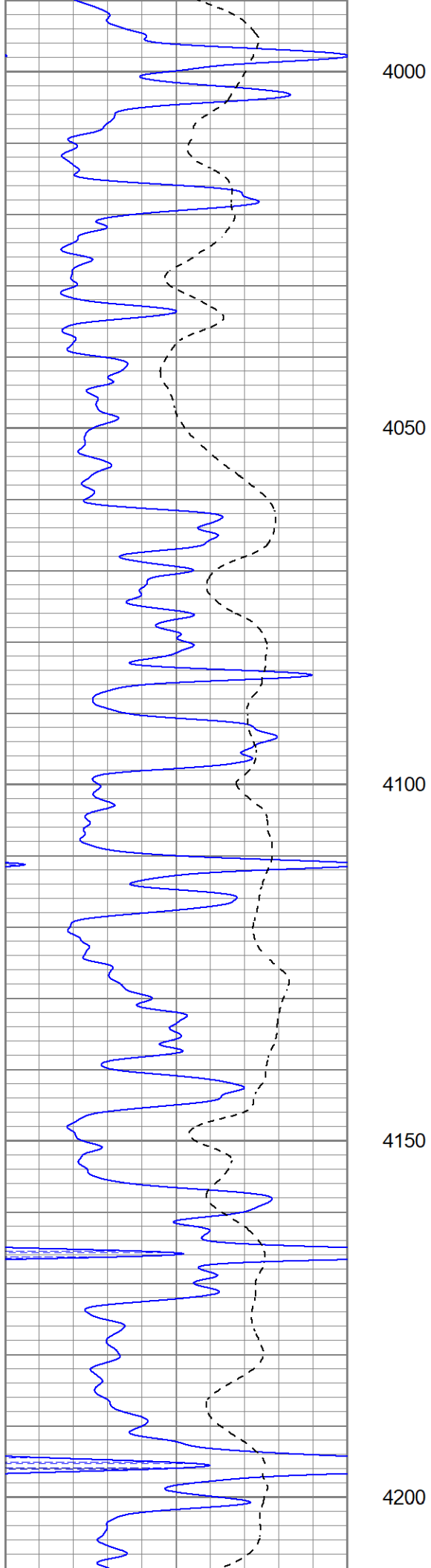
3800

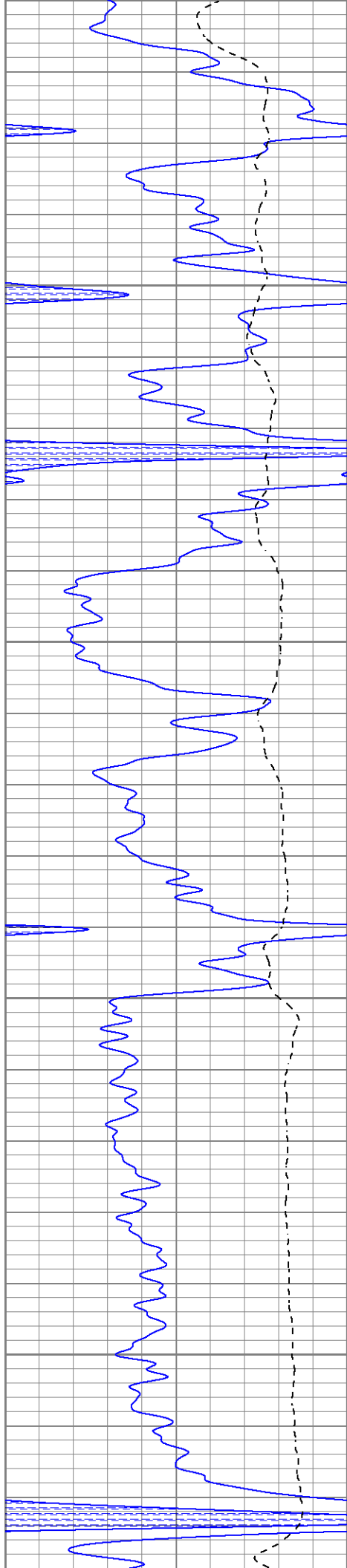
3850

3900

3950





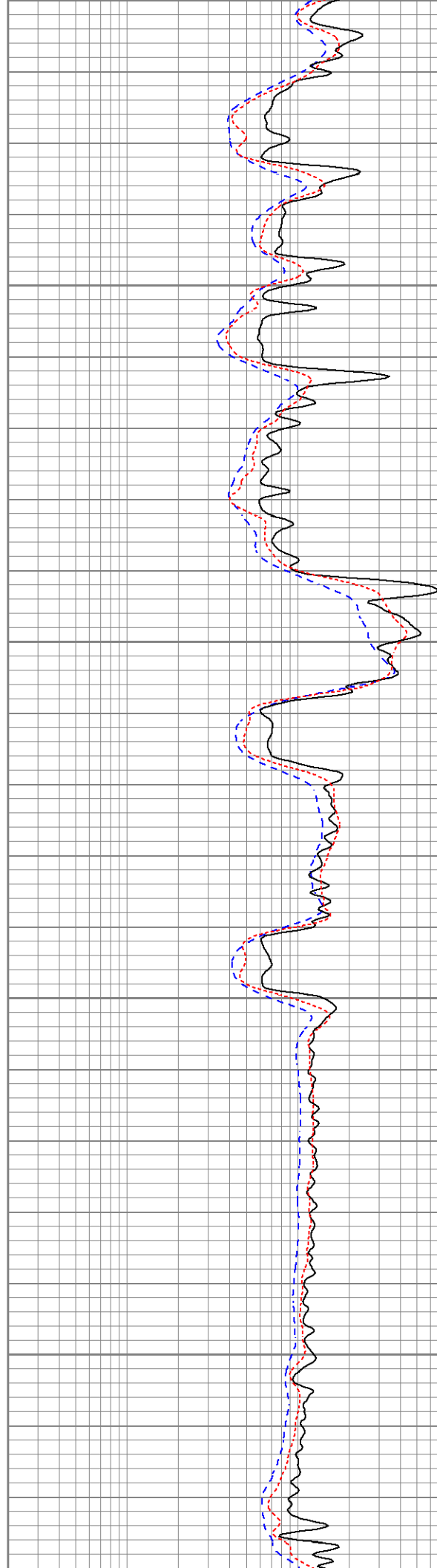


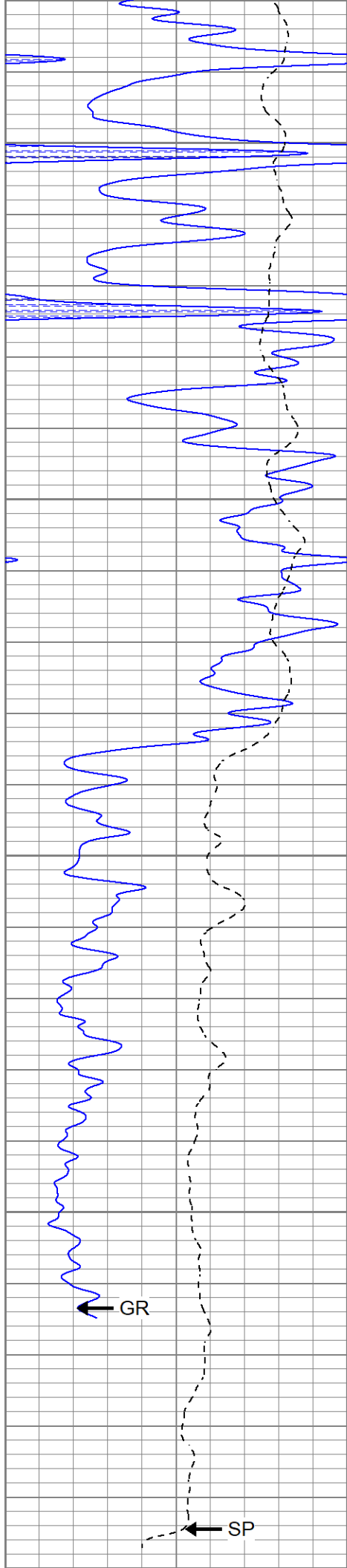
4250

4300

4350

4400





4450

4500

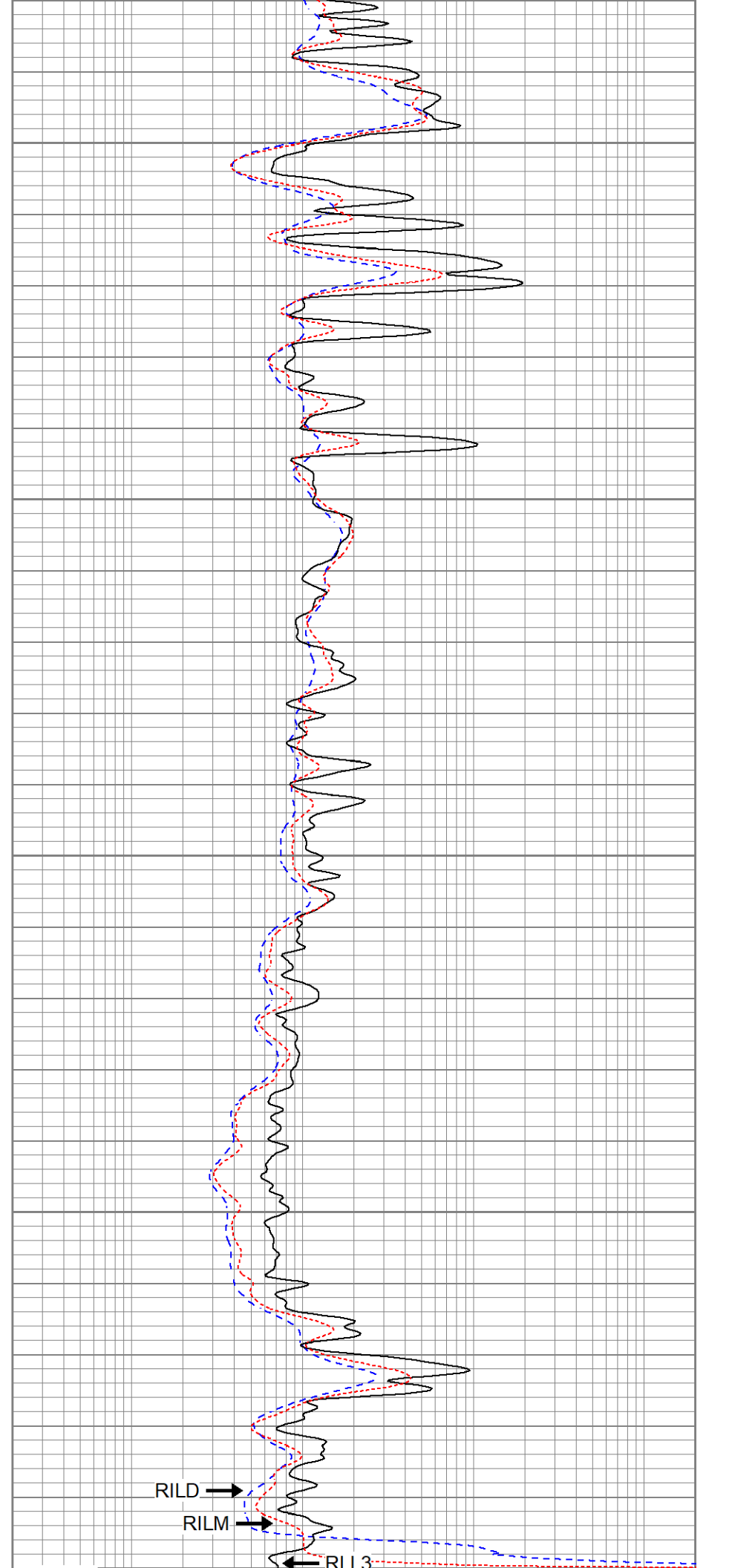
4550

4600

4650

GR

SP



RILD

RILM

RI 3

0	GR (GAPI)	150
-100	SP (mV)	100

LTD 4651		
0.2	RILD (Ohm-m)	2000
0.2	RLL3 (Ohm-m)	2000
0.2	RILM (Ohm-m)	2000

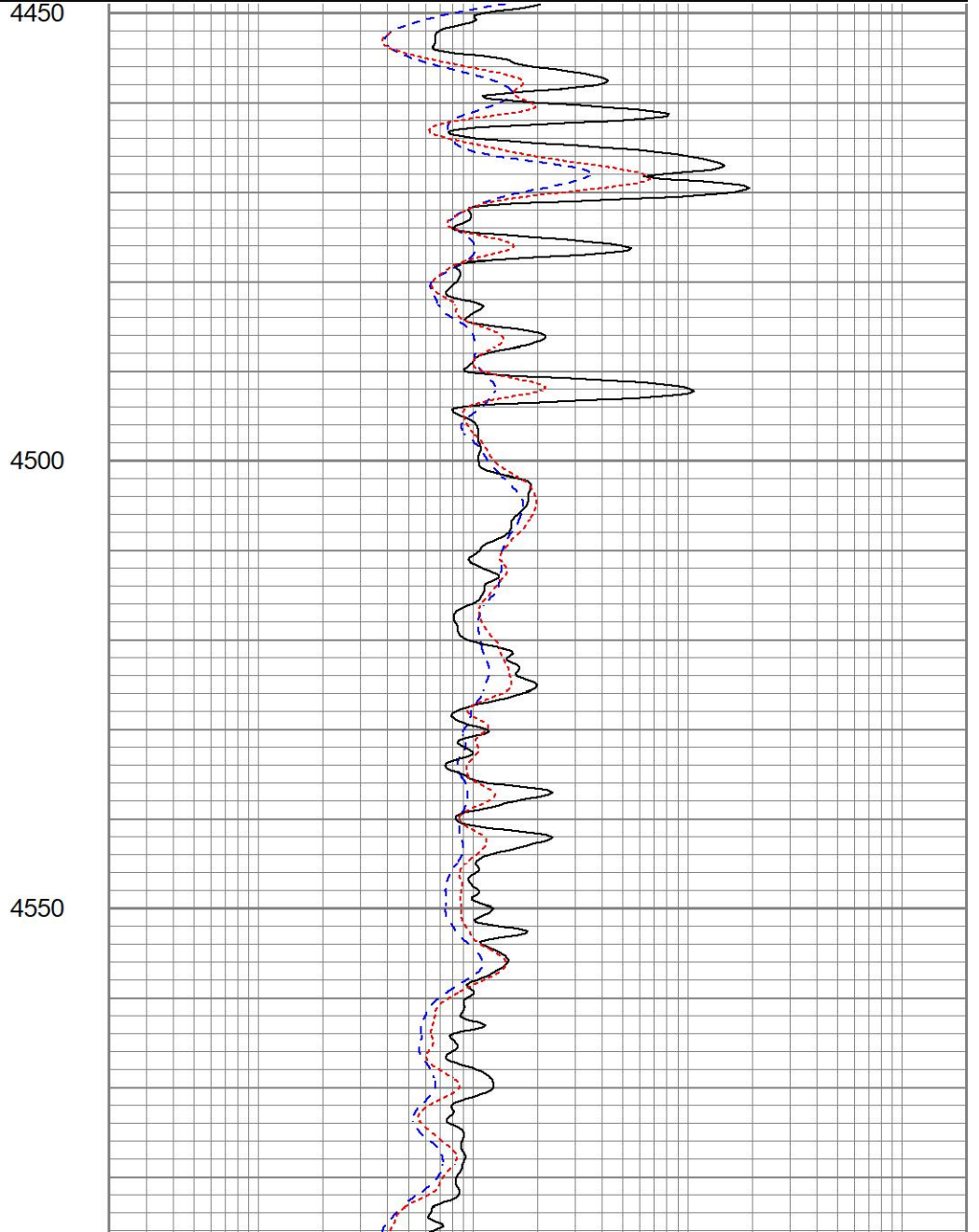
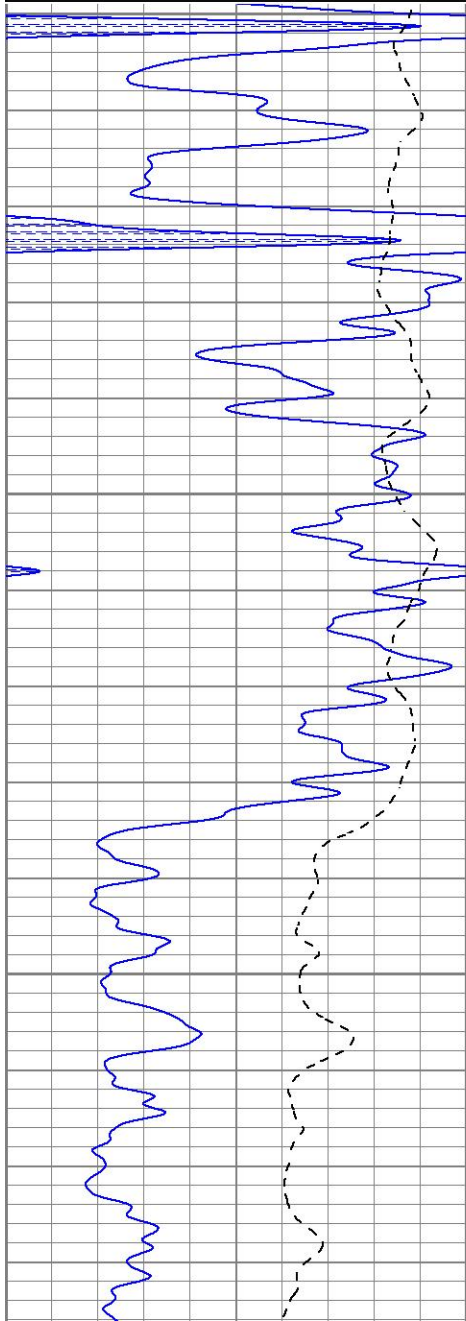


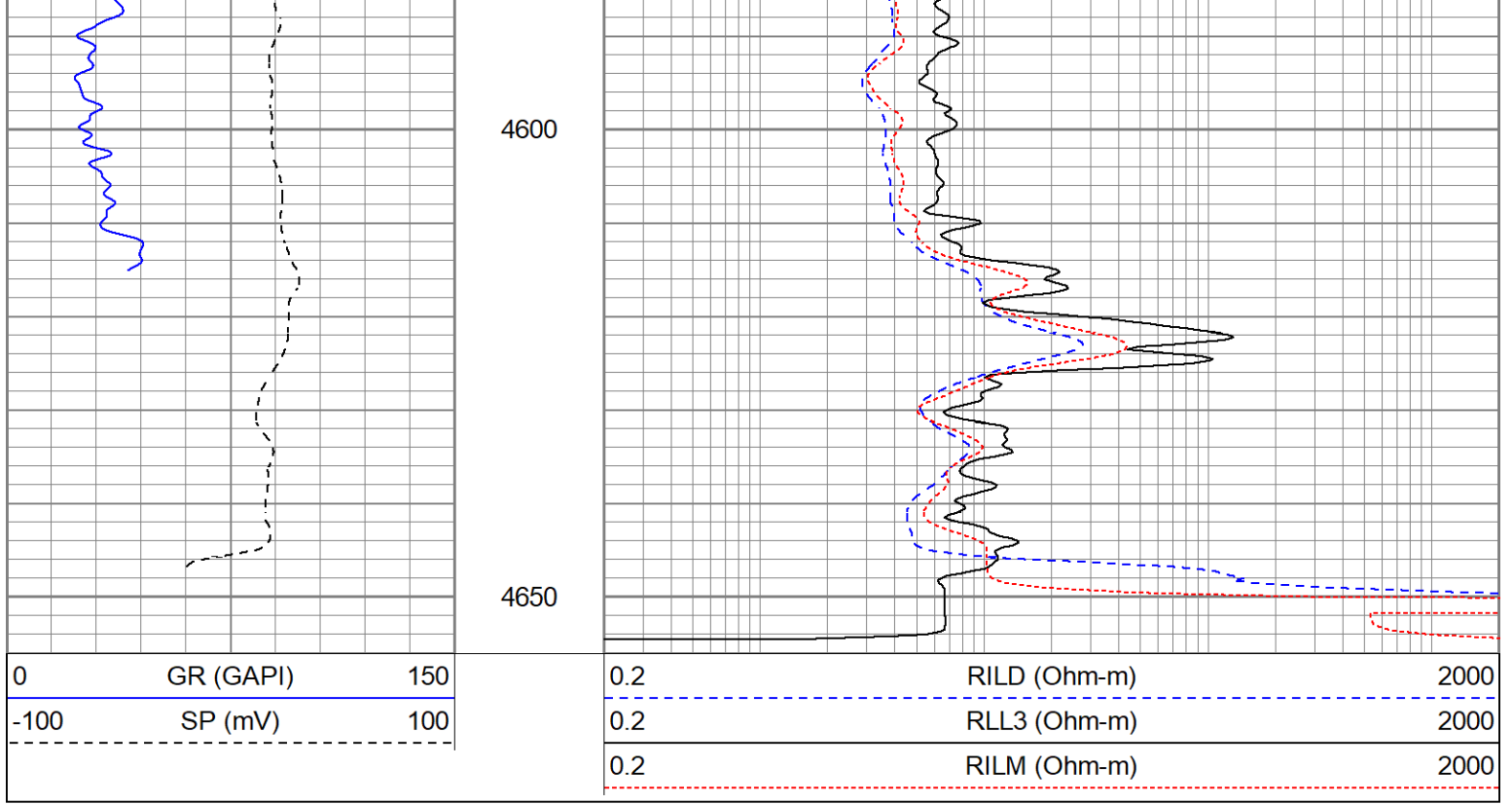
REPEAT SECTION

Database File ppthefountainhead#1oh.db
 Dataset Pathname pass3.1
 Presentation Format kdil
 Dataset Creation Mon Oct 03 18:58:14 2022
 Charted by Depth in Feet scaled 1:240

0	GR (GAPI)	150
-100	SP (mV)	100

0.2	RILD (Ohm-m)	2000
0.2	RLL3 (Ohm-m)	2000
0.2	RILM (Ohm-m)	2000





Calibration Report

Database File ppthefountainhead#1oh.db
 Dataset Pathname pass3.1
 Dataset Creation Mon Oct 03 18:58:14 2022

Dual Induction Calibration Report

Serial-Model: 1842-ADM
 Surface Cal Performed: Mon Sep 20 22:00:42 2021
 Downhole Cal Performed: Mon Sep 20 22:00:24 2021
 After Survey Verification Performed: Mon Sep 20 22:05:52 2021

Surface Calibration

Loop:	Readings			References			Results	
	Air	Loop	V	Air	Loop	mmho/m	m	b
Deep	0.018	0.672	V	0.000	350.000	mmho/m	535.475	-9.896
Medium	0.003	0.769	V	0.000	400.000	mmho/m	522.607	-1.745
Internal:	Zero	Cal		Zero	Cal		m	b
Deep	0.018	0.672	V	0.000	350.000	mmho/m	535.240	-9.549
Medium	0.003	0.768	V	0.000	550.000	mmho/m	718.637	-2.088

Downhole Calibration

Internal:	Readings			References			Results	
	Zero	Cal	V	Zero	Cal	mmho/m	m	b
Deep	-0.219	349.905		-0.343	349.810	mmho/m	1.000	-3.124
Medium	-0.118	399.722		-0.226	399.745	mmho/m	1.000	-3.108
Shallow	2.536	0.025	V	500.000	2.000	Ohm-m	165.330	-1.504

After Survey Verification

Readings Targets Results

Internal:	Zero	Cal		Zero	Cal		m'	b'
Deep	0.000	0.000	mmho/m	-0.219	349.905	mmho/m	1.000	-3.124
Medium	0.000	0.000	mmho/m	-0.118	399.722	mmho/m	1.000	-3.108
Shallow	0.000	0.000	Ohm-m	500.000	2.000	Ohm-m	1.000	0.000

Neutron Calibration Report

Serial Number:	AD5139	
Tool Model:	ADMY5139	
Performed:	(Not Performed)	
Calibrator Value:	1	NAPI
Calibrator Reading:	1	cps
Sensitivity:	1	NAPI/cps

Temperature Calibration Report

Serial Number:	WithMC			
Tool Model:	WMC			
Performed:	Fri Apr 19 12:15:04 2019			
		Reference		Reading
Low Reference:	0.00	degF	0.00	degF
High Reference:	1.00	degF	1.00	degF
Gain:	1.00			
Offset:	0.00			
Delta Spacing	1			

Inclinometer Calibration Report

Performed:	Wed May 5 19:20:48 2021				
	Low Read.	High Read.	Low Ref.	High Ref.	
X Accelerometer	205.00	1843.00	-1.00	1.00	gee
Y Accelerometer	205.00	1843.00	-1.00	1.00	gee
Z Accelerometer					gee

Gamma Ray Calibration Report

Serial Number:	WithMC	
Tool Model:	WMC	
Performed:	Wed Jun 15 11:53:49 2022	
Calibrator Value:	1.0	GAPI
Background Reading:	0.0	cps
Calibrator Reading:	1.0	cps
Sensitivity:	1.1000	GAPI/cps