



MICRO
LOG

Company PALOMINO PETROLEUM
Well THE FOUNTAINHEAD #1
Field SARGENT SOUTHEAST
County NESS
State KS

Company PALOMINO PETROLEUM
Well THE FOUNTAINHEAD #1
Field SARGENT SOUTHEAST
County NESS State KS

Location: API #: 15 135 26189
100' FSL & 1031' FEL
SEC 18 TWP 16S RGE 24W
Permanent Datum Ground Level Elevation 2546
Log Measured From KB 8' AGL
Drilling Measured From KB
Other Services
CDNL
DIL
Elevation
K.B. 2554
D.F. 2552
G.L. 2546

| | |
|------------------------------|-----------------|
| Date | 10/03/22 |
| Run Number | TWO |
| Depth Driller | 4650 |
| Depth Logger | 4651 |
| Bottom Logged Interval | 4649 |
| Top Log Interval | 3500 |
| Casing Driller | 8 5/8" @ 221 |
| Casing Logger | 221 |
| Bit Size | 7 7/8" |
| Type Fluid in Hole | Chemical |
| Density / Viscosity | 9.1/59 |
| pH / Fluid Loss | 11.0/5.4 |
| Source of Sample | Pit |
| Rm @ Meas. Temp | .6@80degf |
| Rmf @ Meas. Temp | .45@80degf |
| Rmc @ Meas. Temp | .72@80degf |
| Source of Rmf / Rmc | Calculated |
| Rm @ BHT | .39@121degf |
| Time Circulation Stopped | 2:30 P.M. |
| Time Logger on Bottom | 5:30 P.M |
| Maximum Recorded Temperature | 121degf |
| Equipment Number | T605 |
| Location | Hays, KS |
| Recorded By | GUS PFANENSTIEL |
| Witnessed By | KEATON JONES |

<<< Fold Here >>>

All interpretations are opinions based on inferences from electrical or other measurements and we cannot and do not guarantee the accuracy or correctness of any interpretation, and we shall not, except in the case of gross or willful negligence on our part, be liable or responsible for any loss, costs, damages, or expenses incurred or sustained by anyone resulting from any interpretation made by any of our officers, agents or employees. These interpretations are also subject to our general terms and conditions set out in our current Price Schedule.

Comments

3 WEST OF RANSOM 1 NORTH, 1/4 WEST
NORTH INTO.

Thank You for using Gemini Wireline LLC
785-625-1182

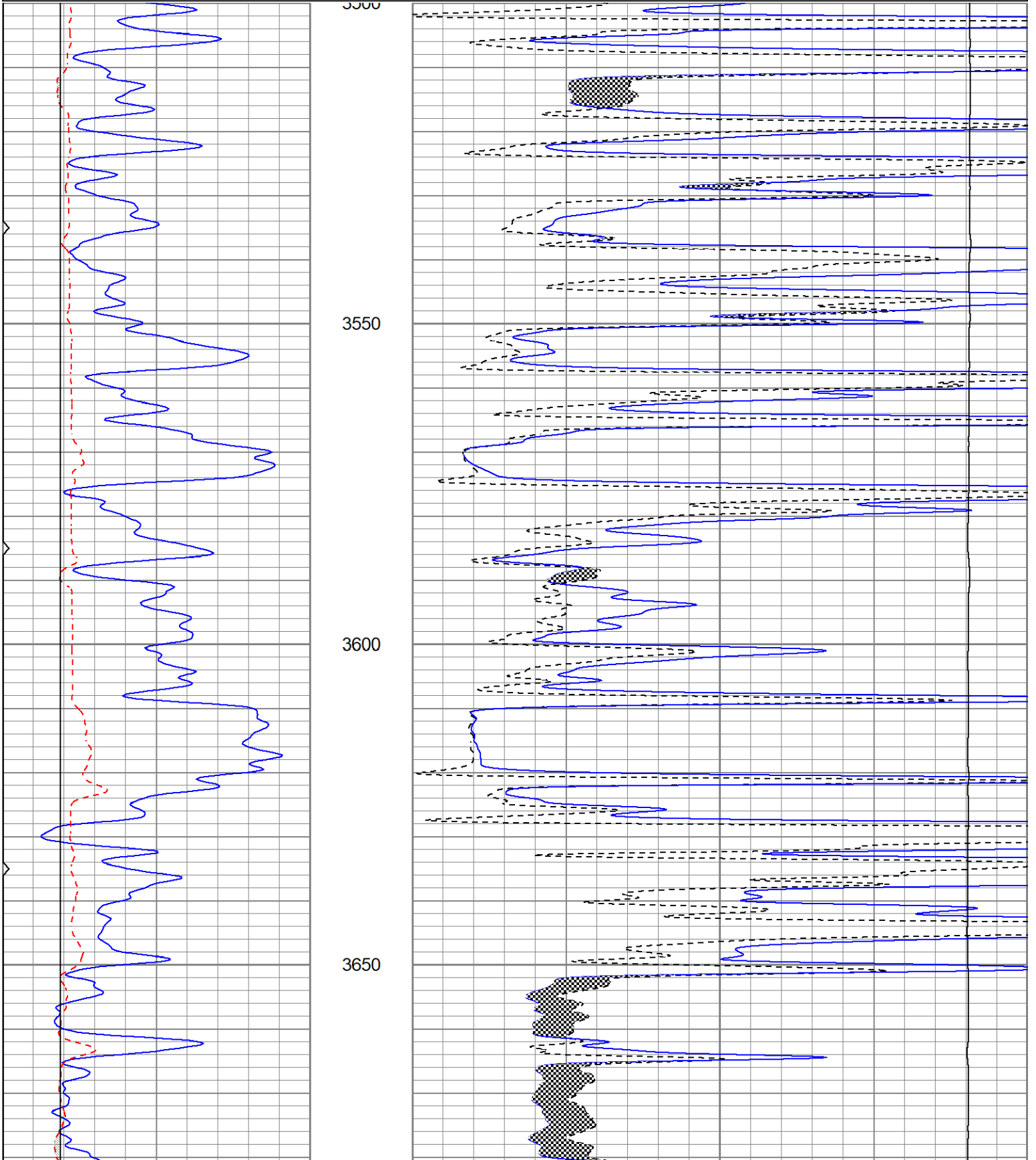


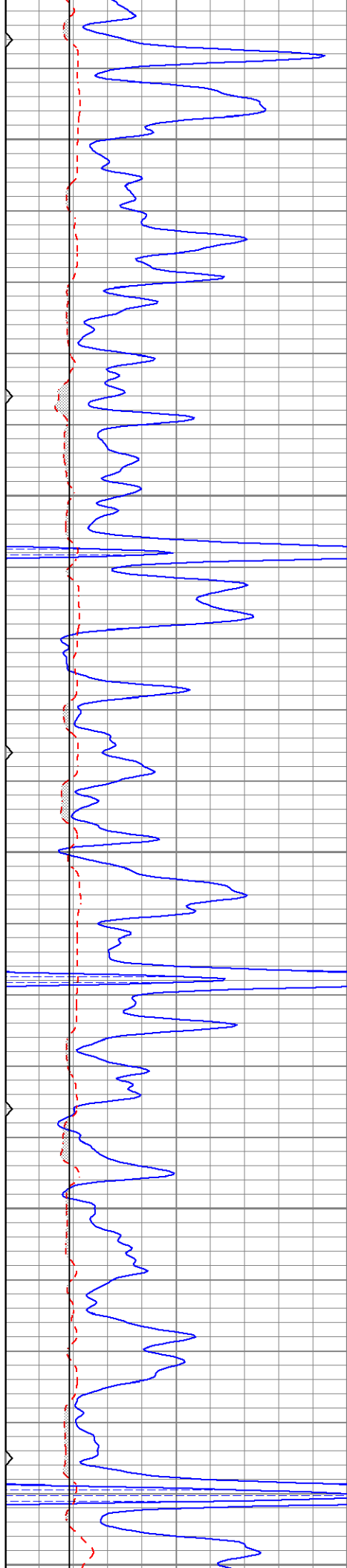
MAIN PASS

Database File ppthefountainhead#1oh.db
 Dataset Pathname pass6.1
 Presentation Format kml
 Dataset Creation Mon Oct 03 19:38:44 2022
 Charted by Depth in Feet scaled 1:240

| | | |
|---|-------------|-----|
| 0 | GR (GAPI) | 150 |
| 6 | MCAL (in) | 16 |
| 6 | BOREID (in) | 16 |
| 0 | MINMK | 50 |

| | | |
|-------|---------------|----|
| 0 | MN 2" (Ohm-m) | 20 |
| 0 | MI 1" (Ohm-m) | 20 |
| 10000 | LTEN (lb) | 0 |





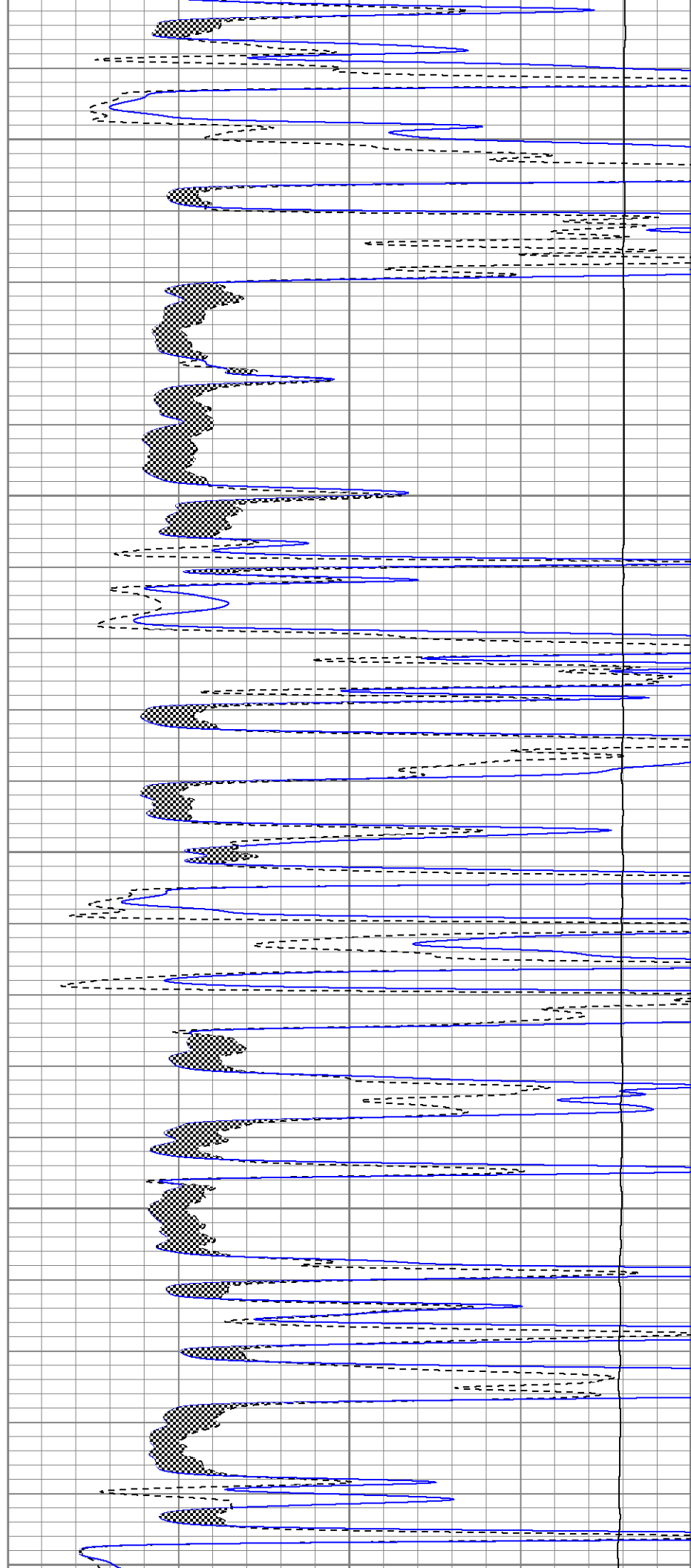
3700

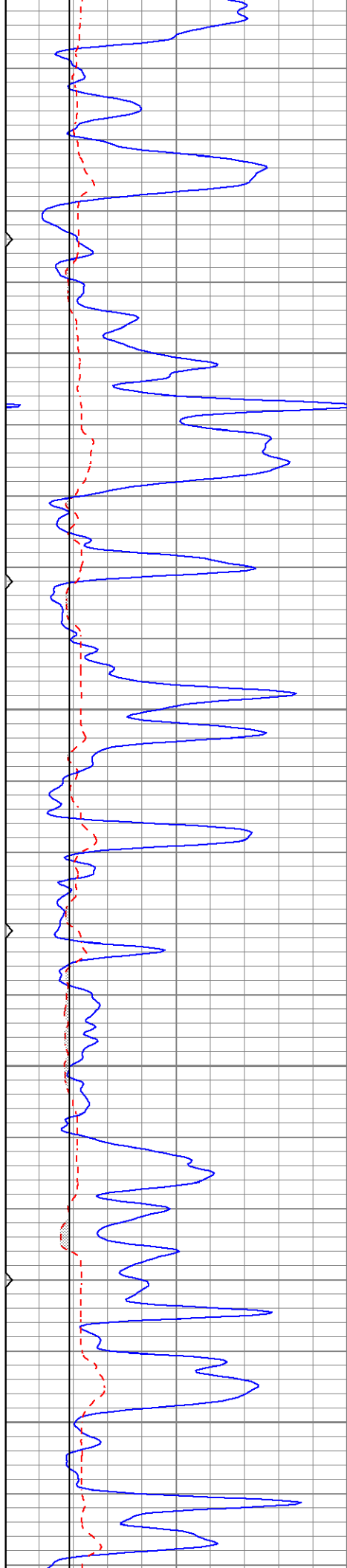
3750

3800

3850

3900





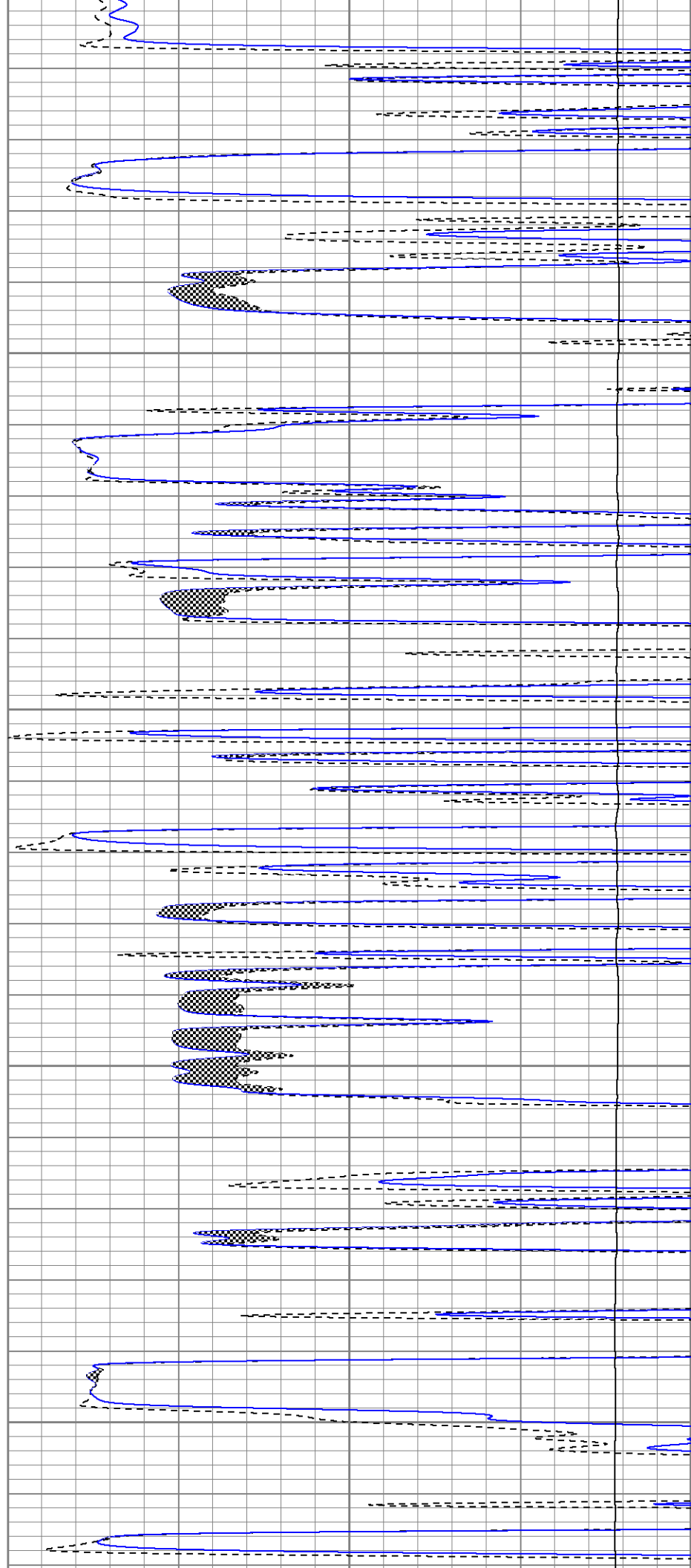
3900

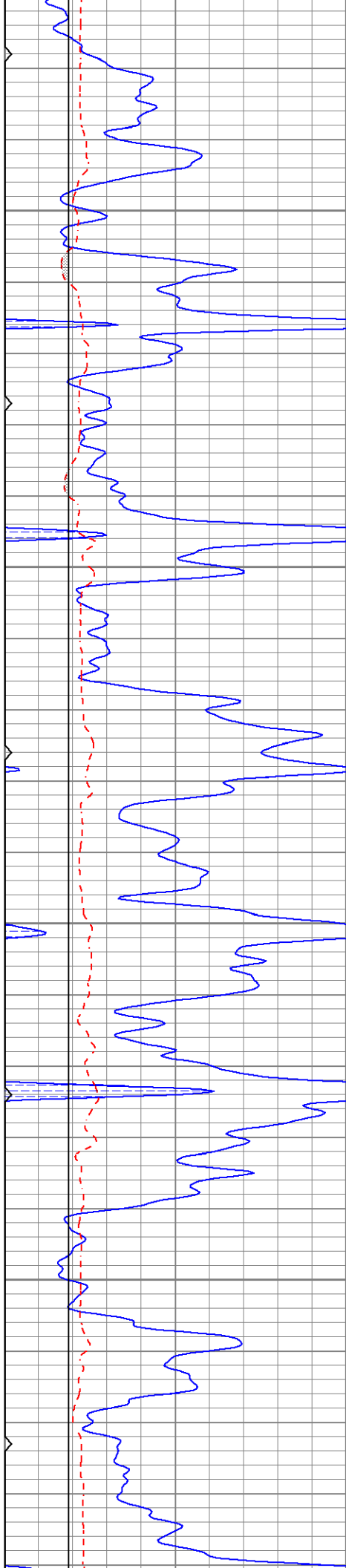
3950

4000

4050

4100



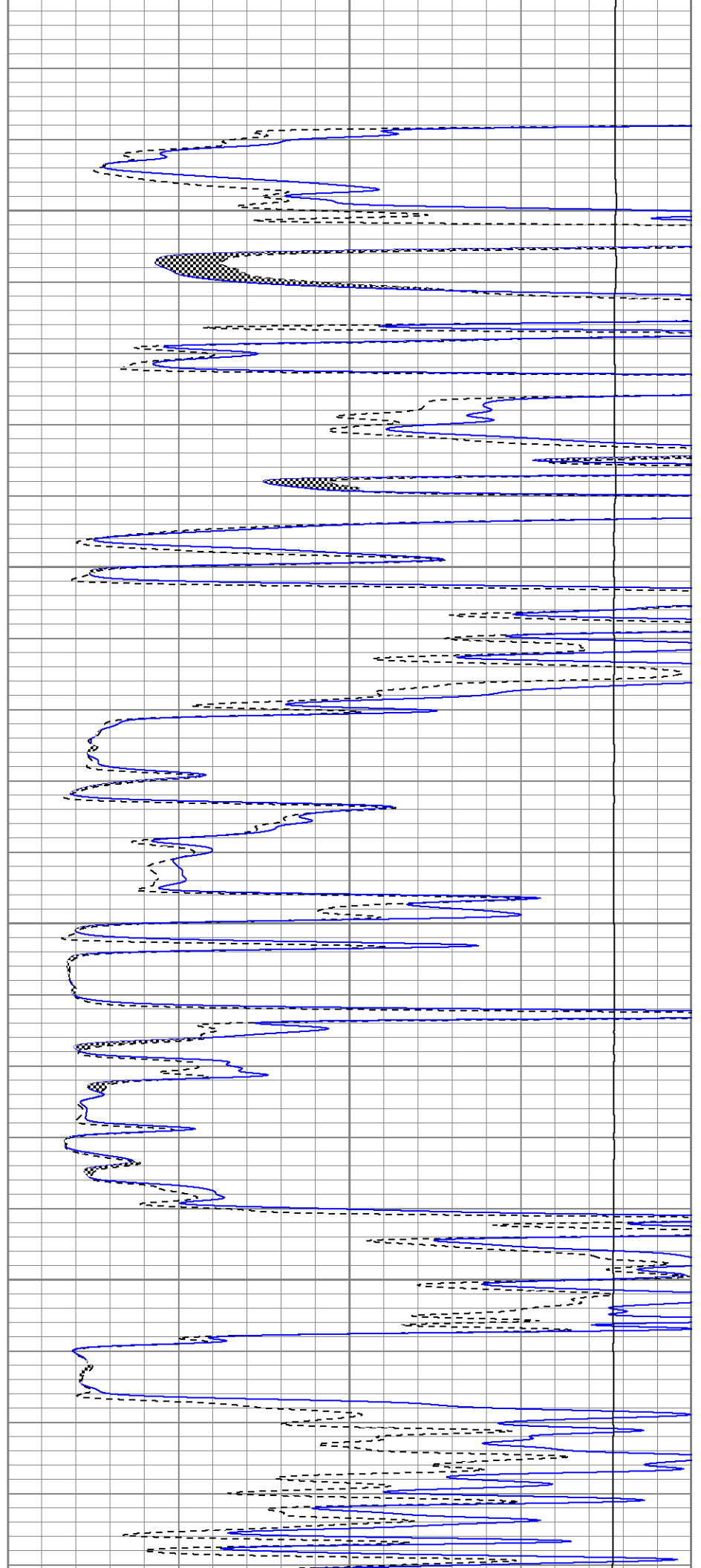


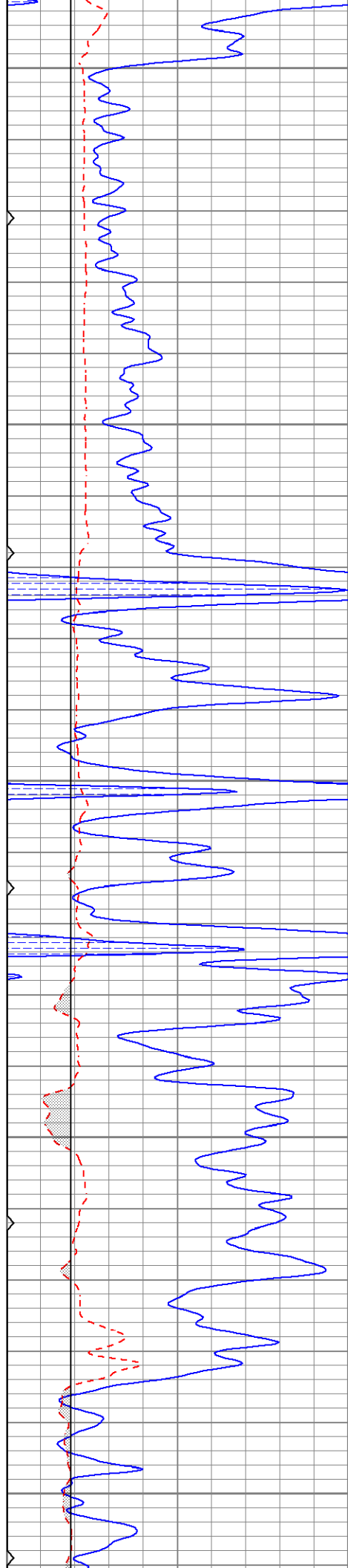
4150

4200

4250

4300





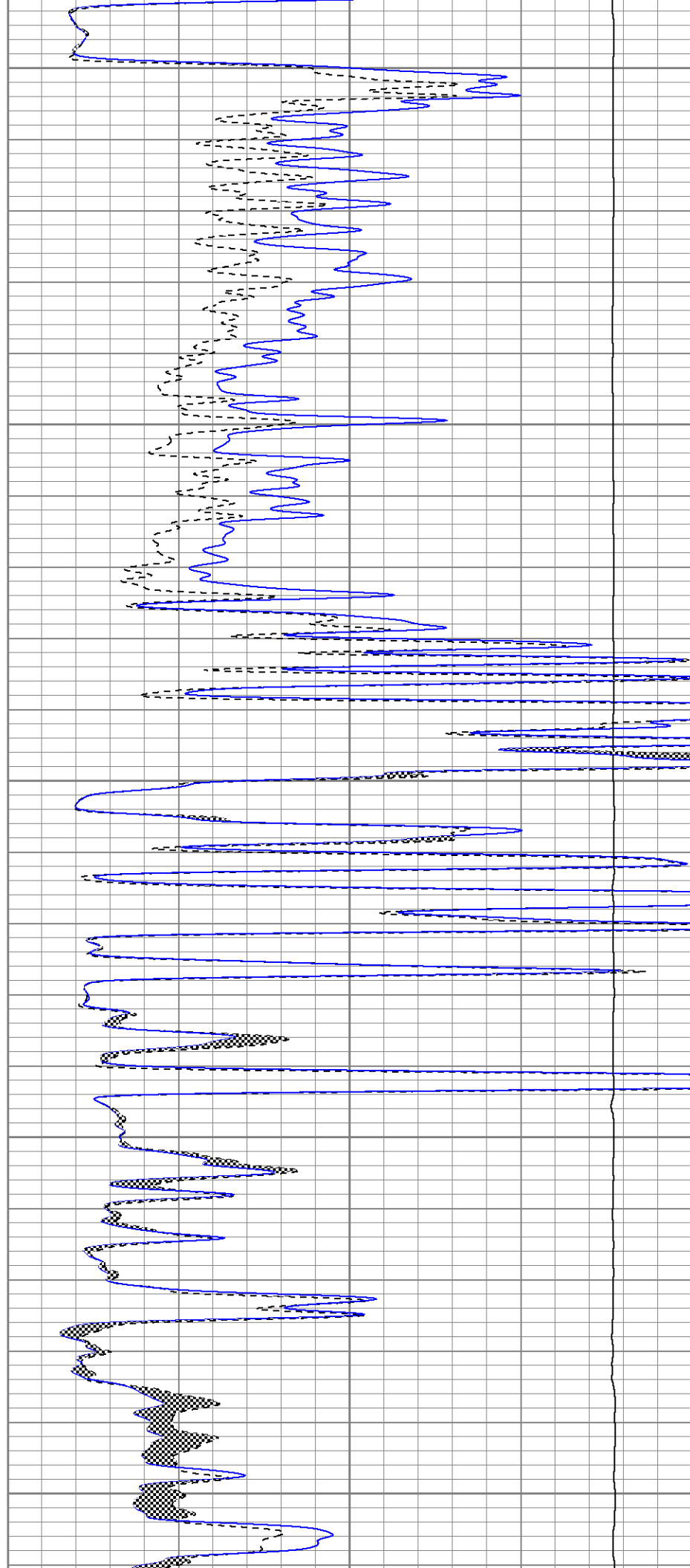
4350

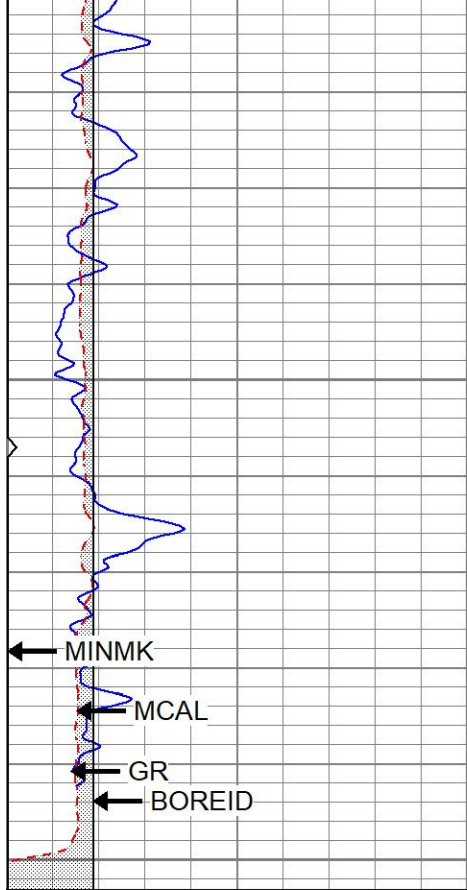
4400

4450

4500

4550

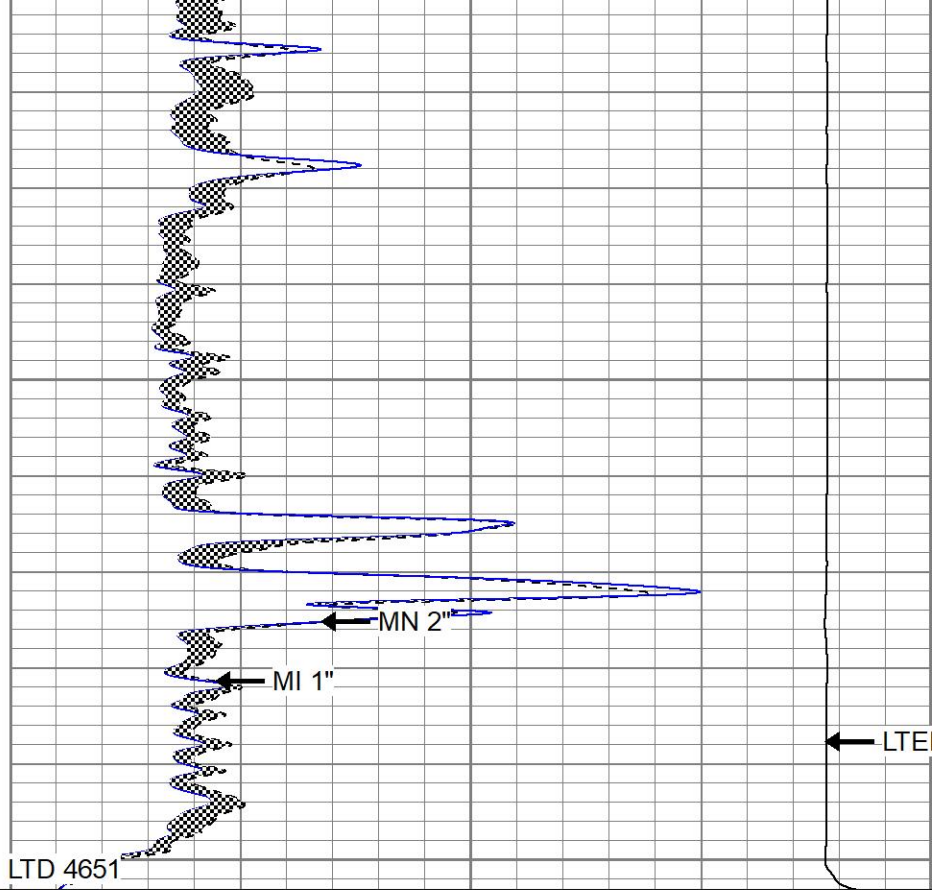




4600

4650

| | | |
|---|-------------|-----|
| 0 | GR (GAPI) | 150 |
| 6 | MCAL (in) | 16 |
| 6 | BOREID (in) | 16 |
| 0 | MINMK | 50 |



LTD 4651

| | | |
|-------|---------------|----|
| 0 | MN 2" (Ohm-m) | 20 |
| 0 | MI 1" (Ohm-m) | 20 |
| 10000 | LTEN (lb) | 0 |

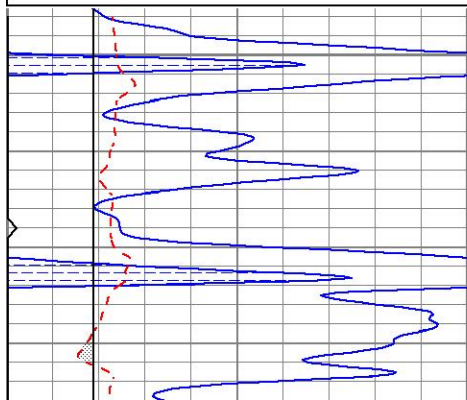


REPEAT SECTION

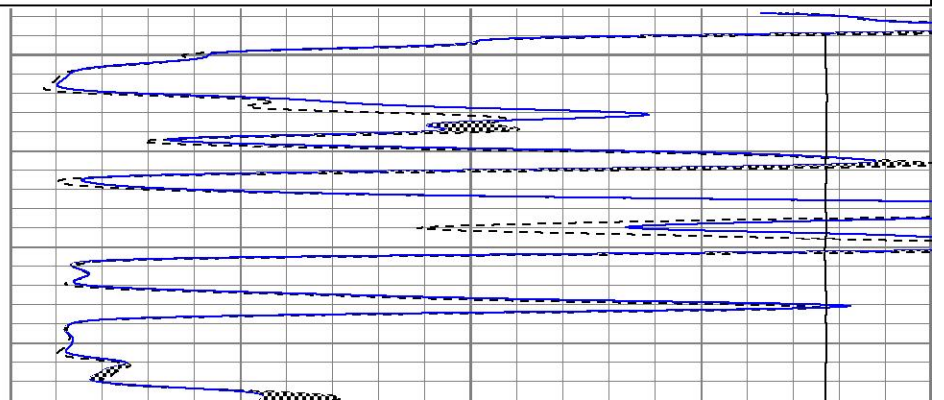
Database File ppthefountainhead#1oh.db
 Dataset Pathname pass5.1
 Presentation Format kml
 Dataset Creation Mon Oct 03 19:15:03 2022
 Charted by Depth in Feet scaled 1:240

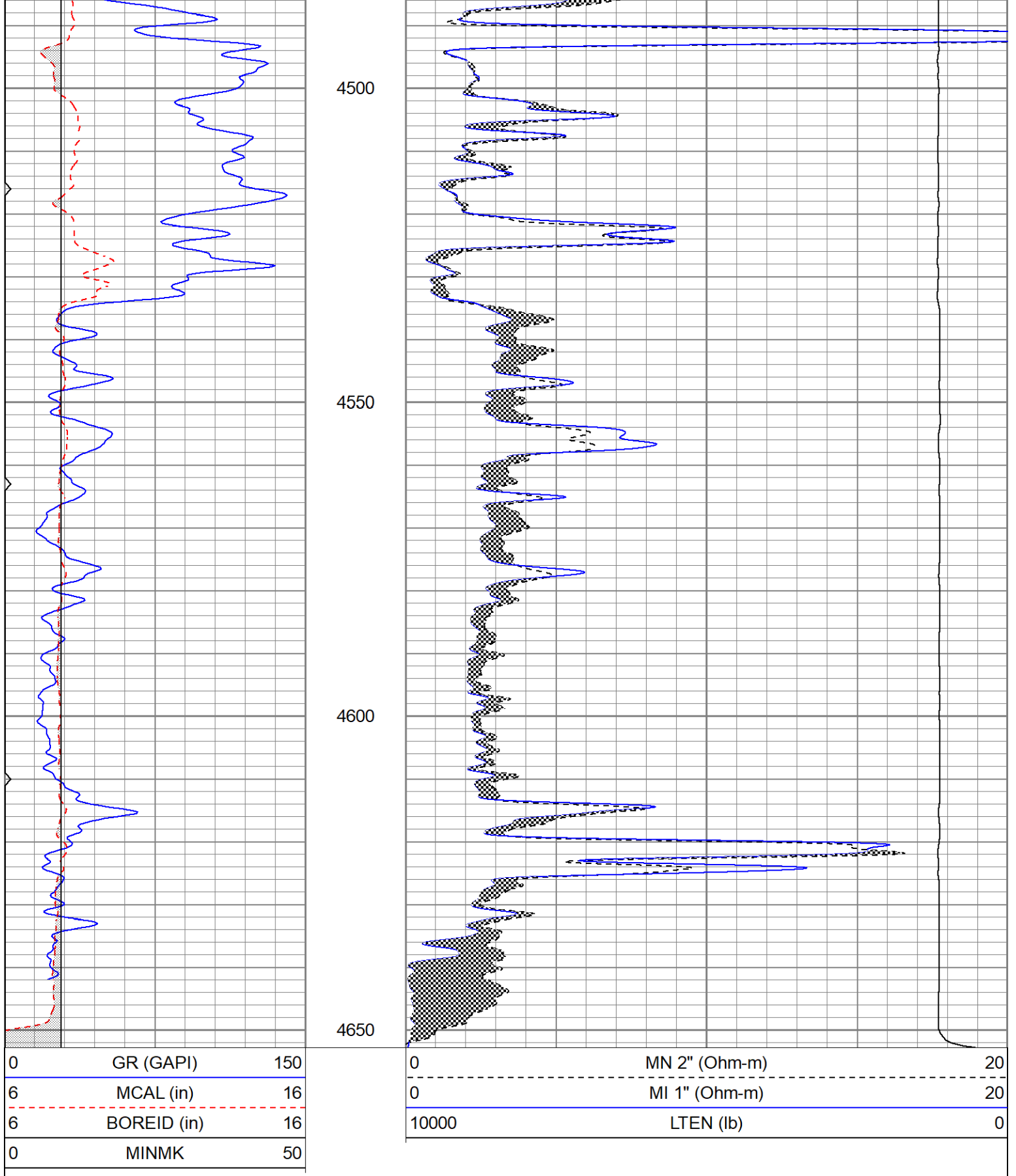
| | | |
|---|-------------|-----|
| 0 | GR (GAPI) | 150 |
| 6 | MCAL (in) | 16 |
| 6 | BOREID (in) | 16 |
| 0 | MINMK | 50 |

| | | |
|-------|---------------|----|
| 0 | MN 2" (Ohm-m) | 20 |
| 0 | MI 1" (Ohm-m) | 20 |
| 10000 | LTEN (lb) | 0 |



4450





Calibration Report

Database File ppthefountainhead#1oh.db
 Dataset Pathname pass5.1
 Dataset Creation Mon Oct 03 19:15:03 2022

Microlog Calibration Report

Serial-Model:

1600-Pengo

| | Readings | | | References | | | Results | |
|---------|----------|--------|---|------------|---------|-------|---------|---------|
| | Zero | Cal | | Zero | Cal | | m | b |
| Normal | 0.0014 | 0.4847 | V | 0.0000 | 10.0000 | Ohm-m | 20.6926 | -0.0299 |
| Inverse | -0.0053 | 0.6371 | V | 0.0000 | 10.0000 | Ohm-m | 13.5670 | 0.0828 |
| Caliper | 3.2319 | 6.4483 | V | 8.0000 | 15.0000 | in | 2.1364 | 1.5662 |

Gamma Ray Calibration Report

| | | |
|---------------------|-------------------------|----------|
| Serial Number: | 2000 | |
| Tool Model: | P2000 | |
| Performed: | Sun May 6 10:04:13 2018 | |
| Calibrator Value: | 1.0 | GAPI |
| Background Reading: | 0.0 | cps |
| Calibrator Reading: | 1.0 | cps |
| Sensitivity: | 0.8200 | GAPI/cps |