



**DENSITY
NEUTRON
LOG**

Company PALOMINO PETROLEUM
Well THE FOUNTAINHEAD #1
Field SARGENT SOUTHEAST
County NESS
State KS

Company PALOMINO PETROLEUM
Well THE FOUNTAINHEAD #1
Field SARGENT SOUTHEAST
County NESS State KS

Location: API #: 15 135 26189
100' FSL & 1031' FEL
SEC 18 TWP 16S RGE 24W
Permanent Datum Ground Level Elevation 2546
Log Measured From KB 8' AGL
Drilling Measured From KB
Other Services
DIL
ML
Elevation
K.B. 2554
D.F. 2552
G.L. 2546

Date	10/03/22
Run Number	One
Depth Driller	4650
Depth Logger	4651
Bottom Logged Interval	4631
Top Log Interval	3500
Casing Driller	8 5/8" @ 221
Casing Logger	221
Bit Size	7 7/8"
Type Fluid in Hole	Chemical
Density / Viscosity	9.1/59
pH / Fluid Loss	11.0/5.4
Source of Sample	Pit
Rm @ Meas. Temp	.6@80degf
Rmf @ Meas. Temp	.45@80degf
Rmc @ Meas. Temp	.72@80degf
Source of Rmf / Rmc	Calculated
Rm @ BHT	.39@121degf
Time Circulation Stopped	2:30 P.M.
Time Logger on Bottom	5:30 P.M
Maximum Recorded Temperature	121degf
Equipment Number	T605
Location	Hays, KS
Recorded By	GUS PFANENSTIEL
Witnessed By	KEATON JONES

<<< Fold Here >>>

All interpretations are opinions based on inferences from electrical or other measurements and we cannot and do not guarantee the accuracy or correctness of any interpretation, and we shall not, except in the case of gross or willful negligence on our part, be liable or responsible for any loss, costs, damages, or expenses incurred or sustained by anyone resulting from any interpretation made by any of our officers, agents or employees. These interpretations are also subject to our general terms and conditions set out in our current Price Schedule.

Comments

3 WEST OF RANSOM 1 NORTH, 1/4 WEST
NORTH INTO.

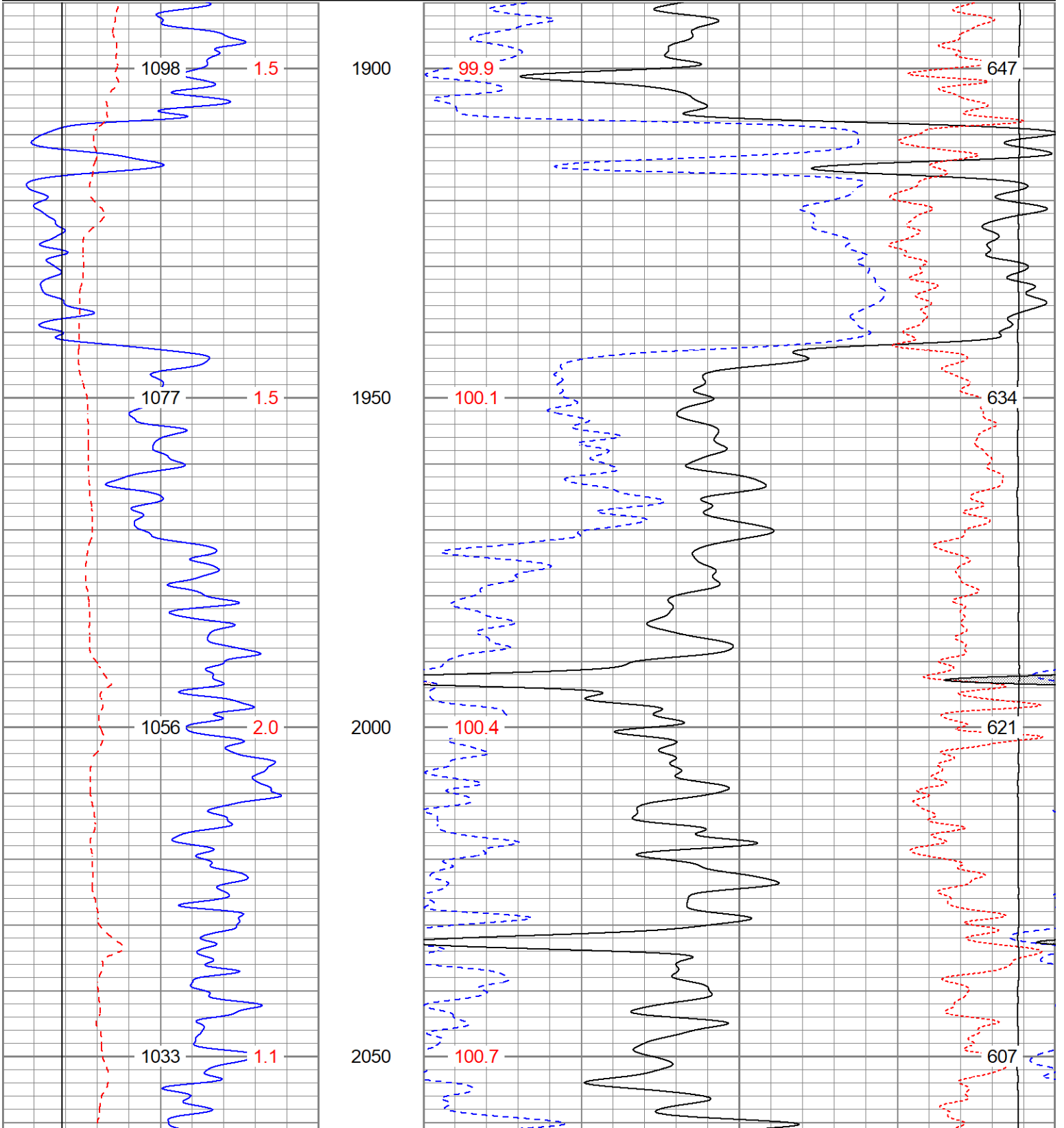
Thank You for using Gemini Wireline LLC
785-625-1182

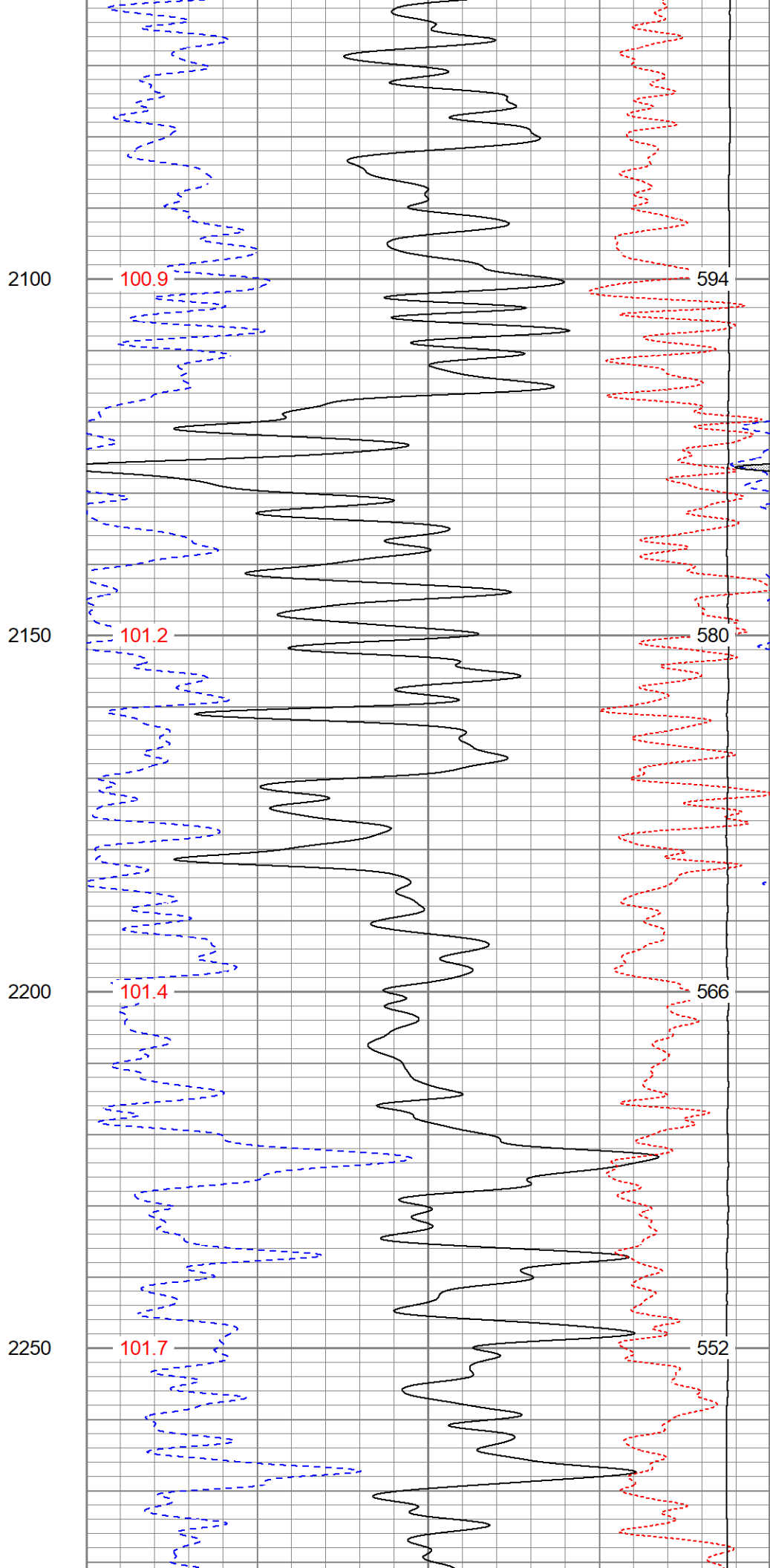
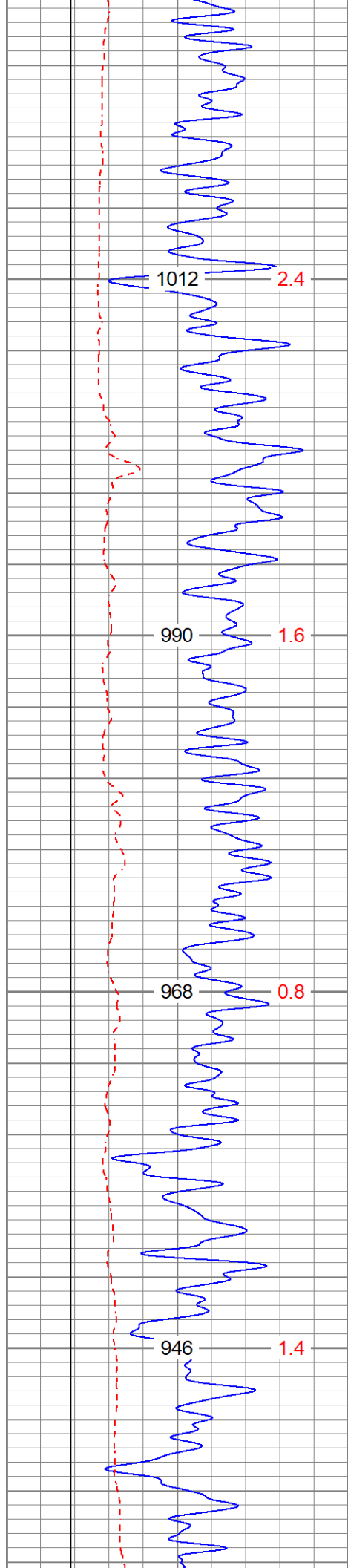


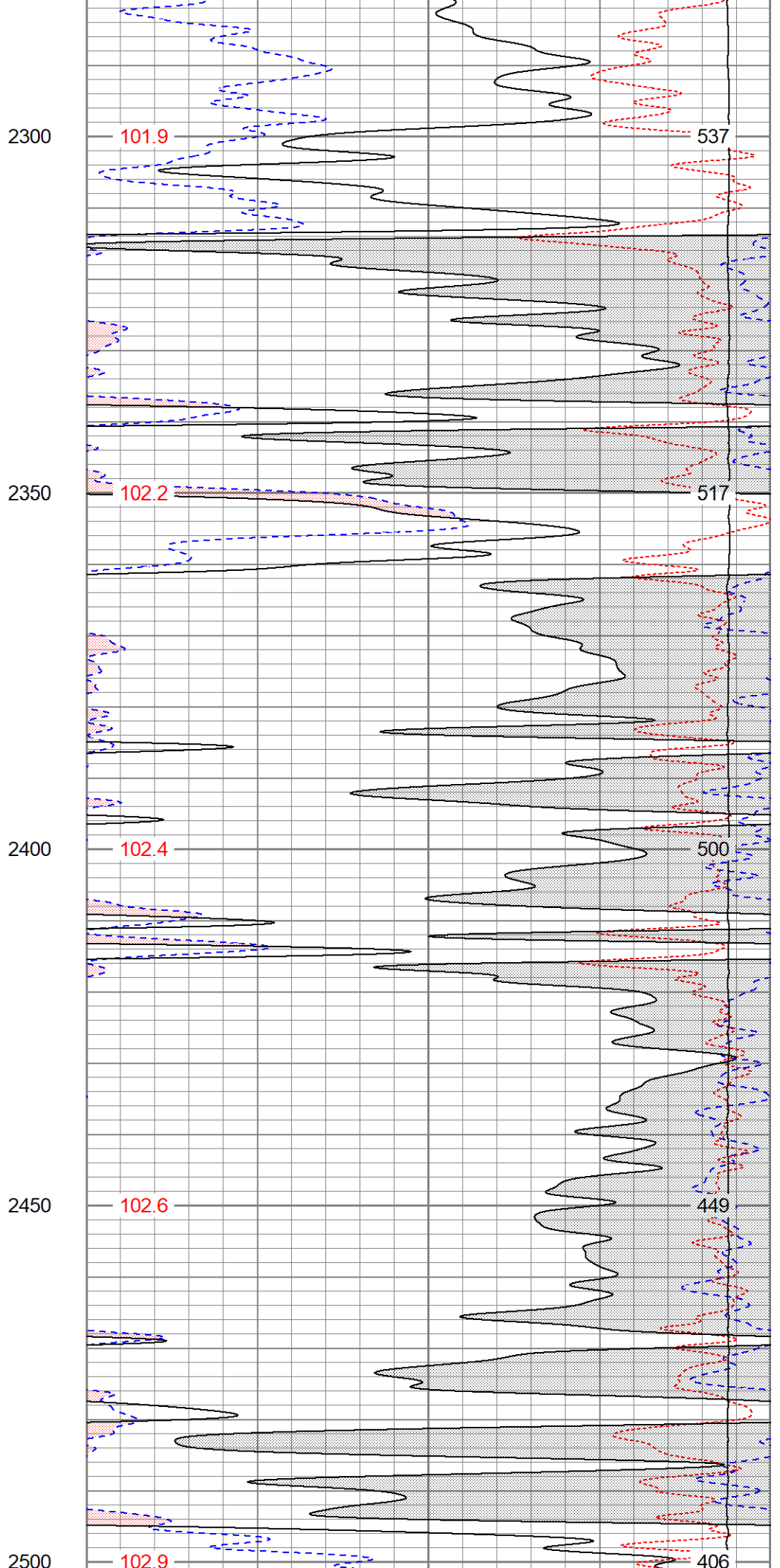
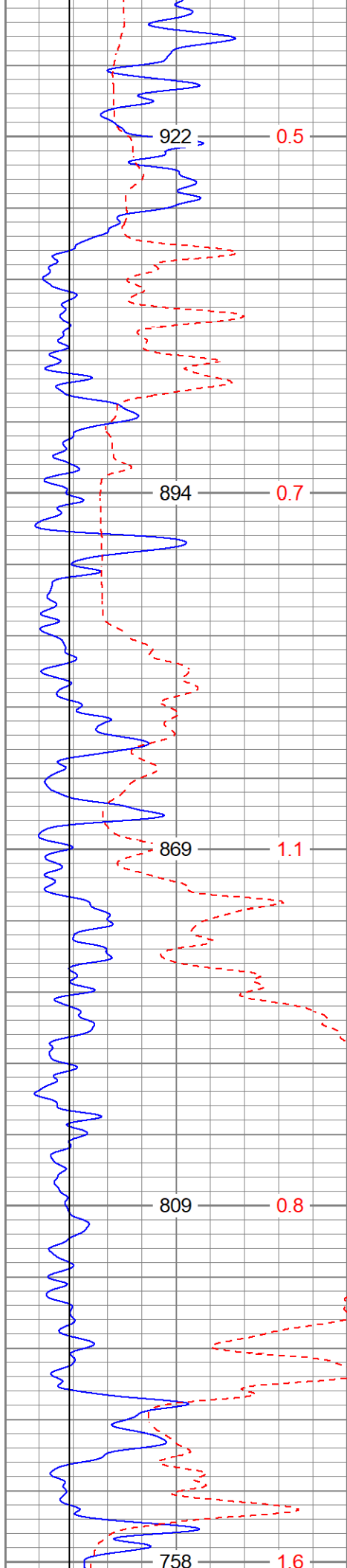
MAIN PASS

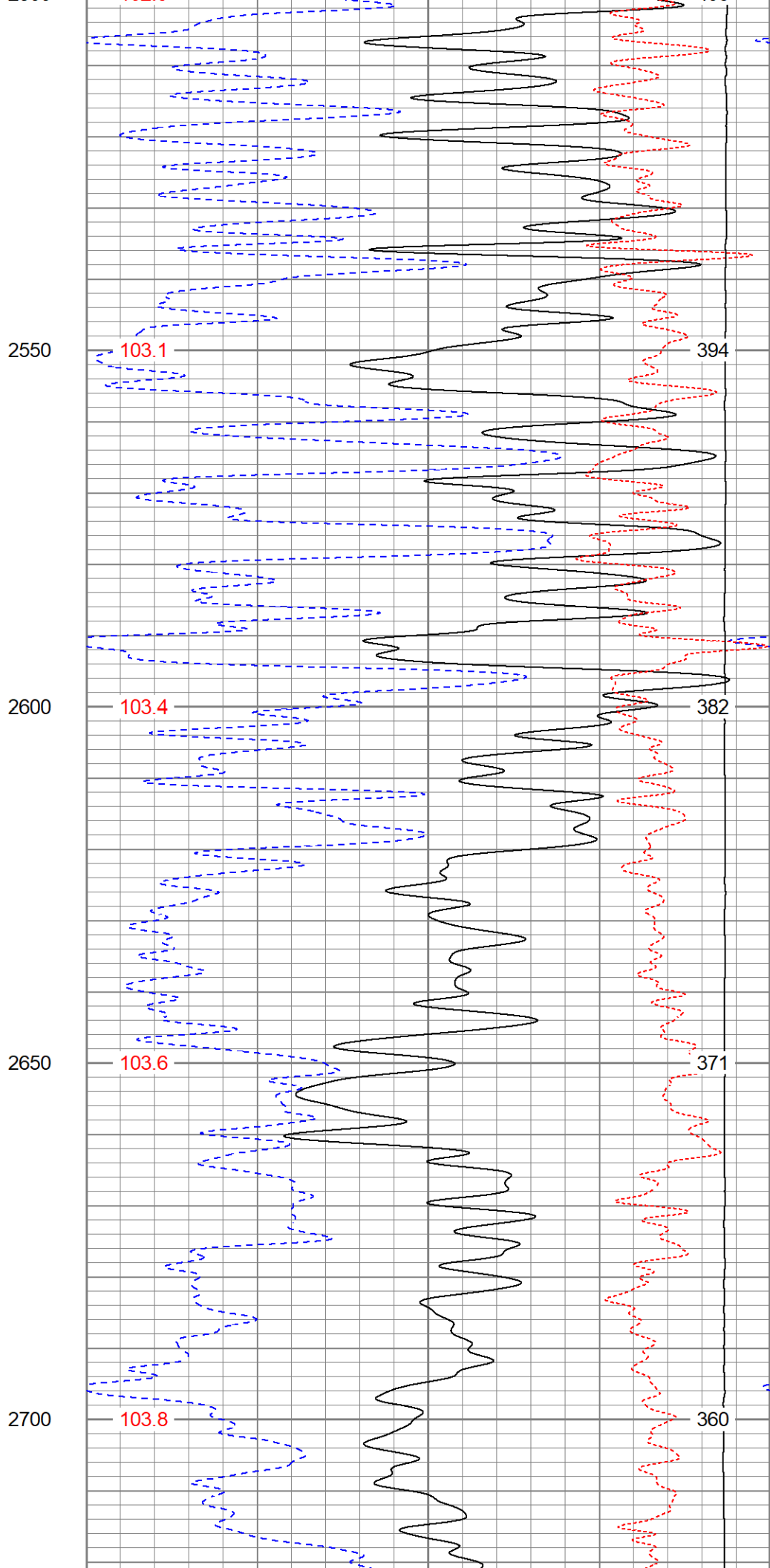
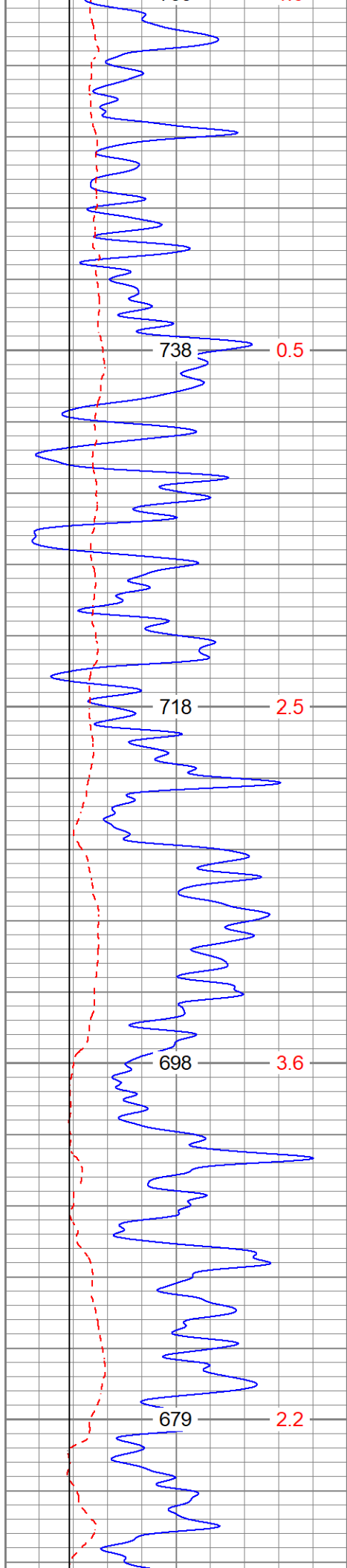
Database File ppthefountainhead#1oh.db
 Dataset Pathname pass4.1
 Presentation Format digital_kcdnl
 Dataset Creation Mon Oct 03 18:56:11 2022
 Charted by Depth in Feet scaled 1:240

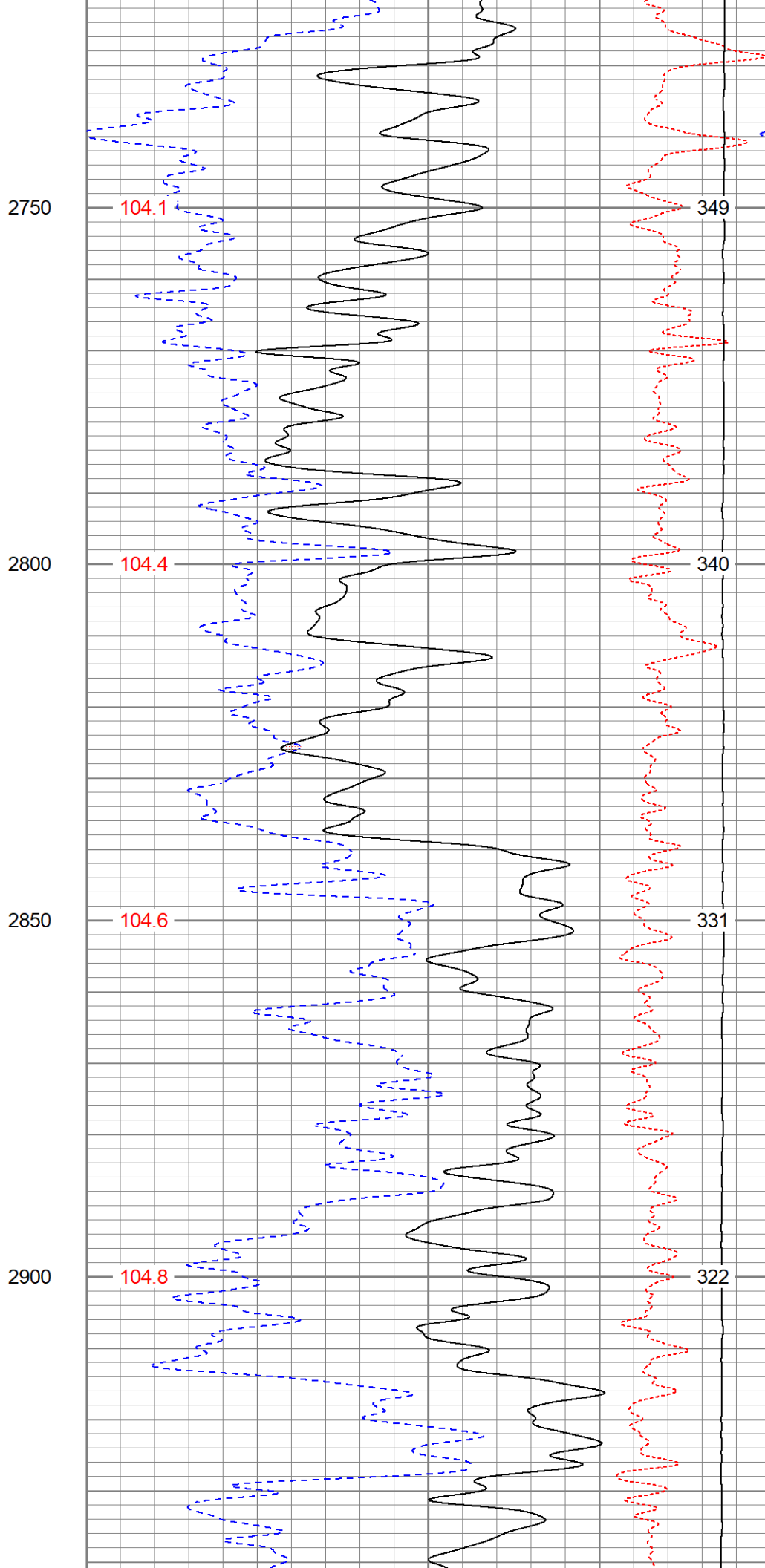
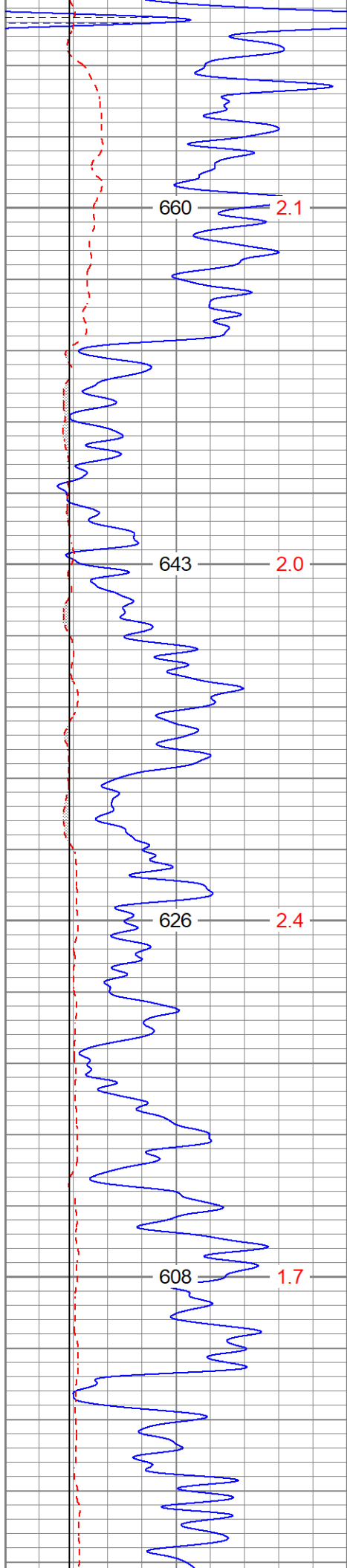
0	GR (GAPI)	150	30	NPOR (pu)	-10	
6	DCAL (in)	16	30	DPOR (pu)	-10	
6	BOREID (in)	16	70	DPOR (pu)	30	
	TBHV (ft3)	DEVI (deg)	TEMP (degF)	-0.25	RHOC (g/cc)	0.25
				8000	LTEN (lb)	0
						ABHV (ft3)

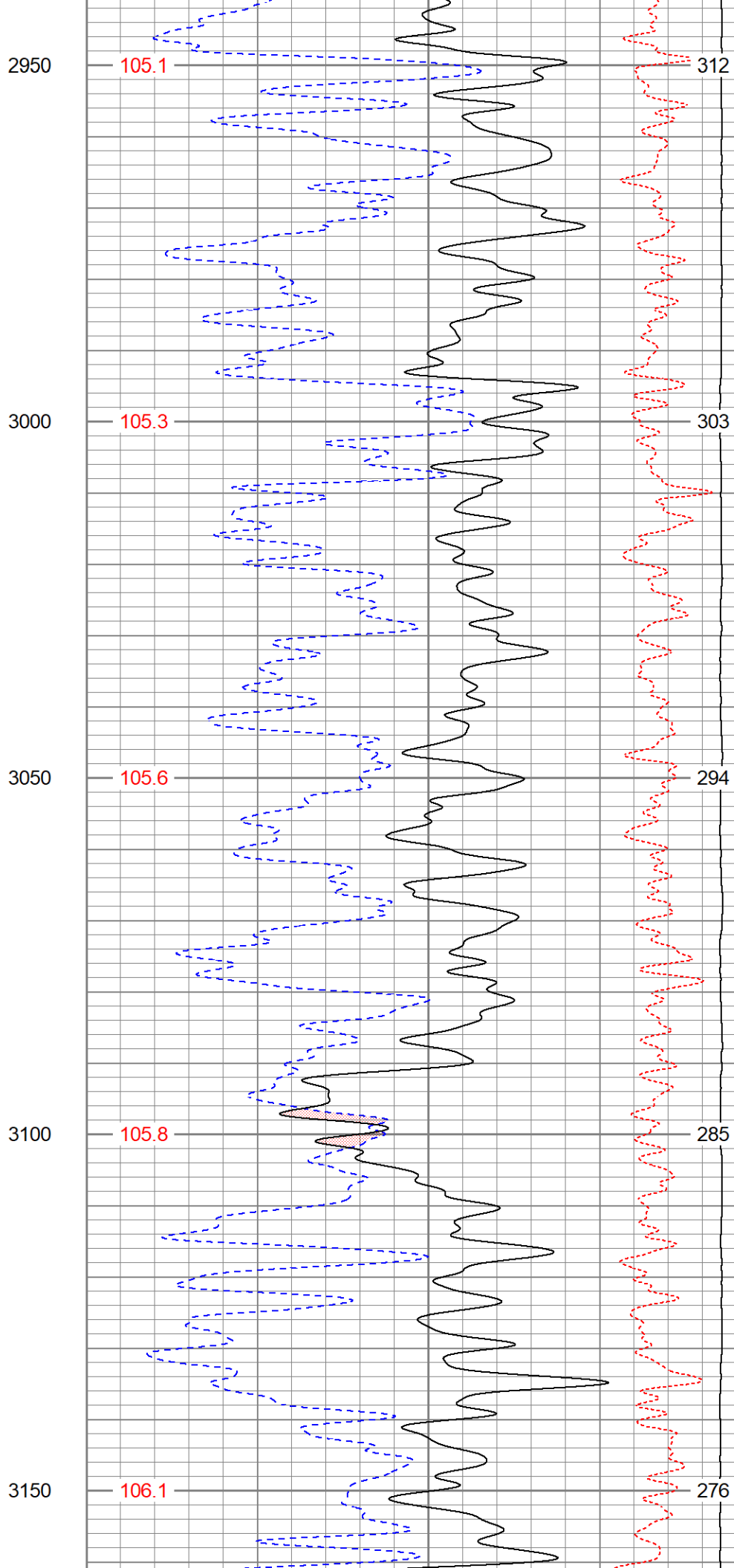
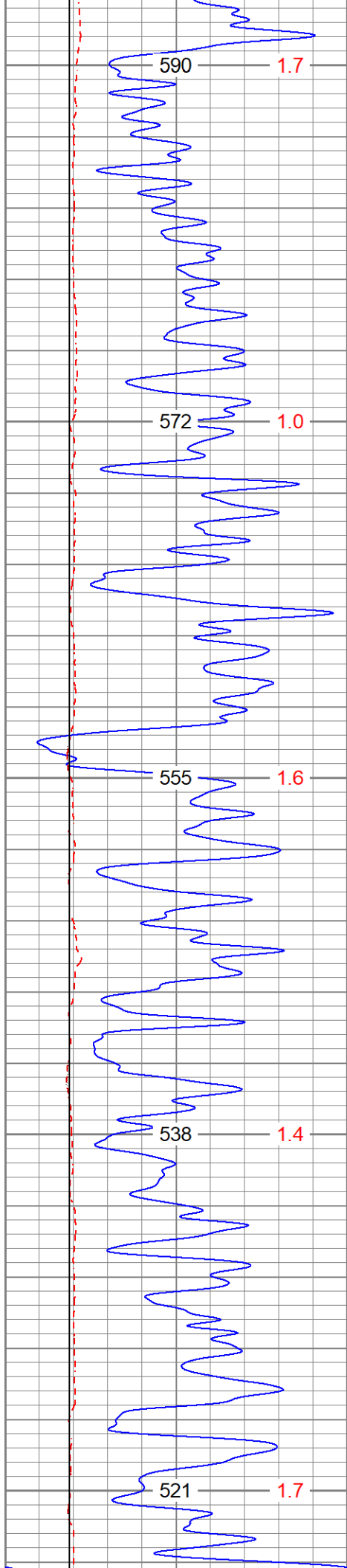


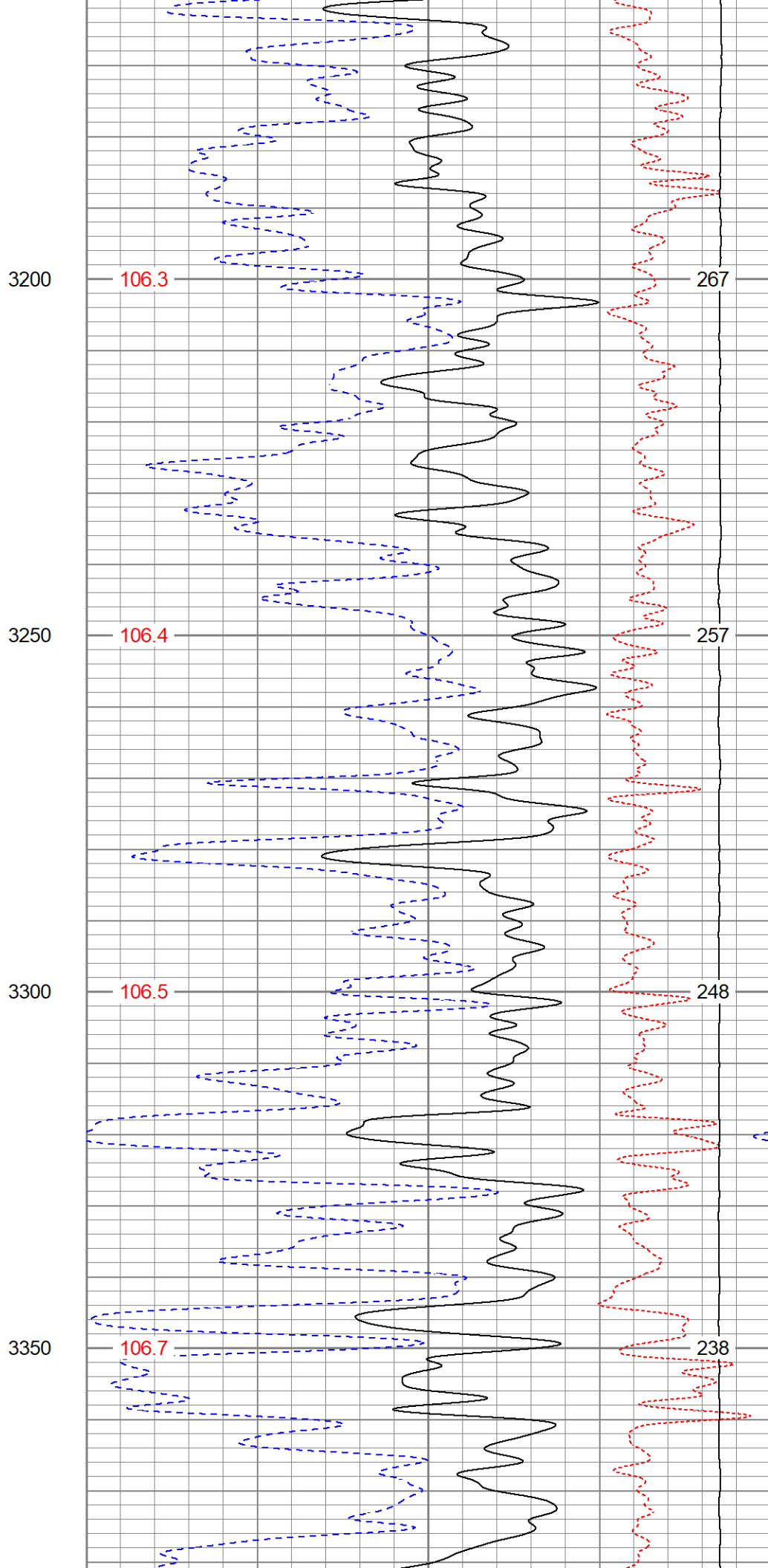
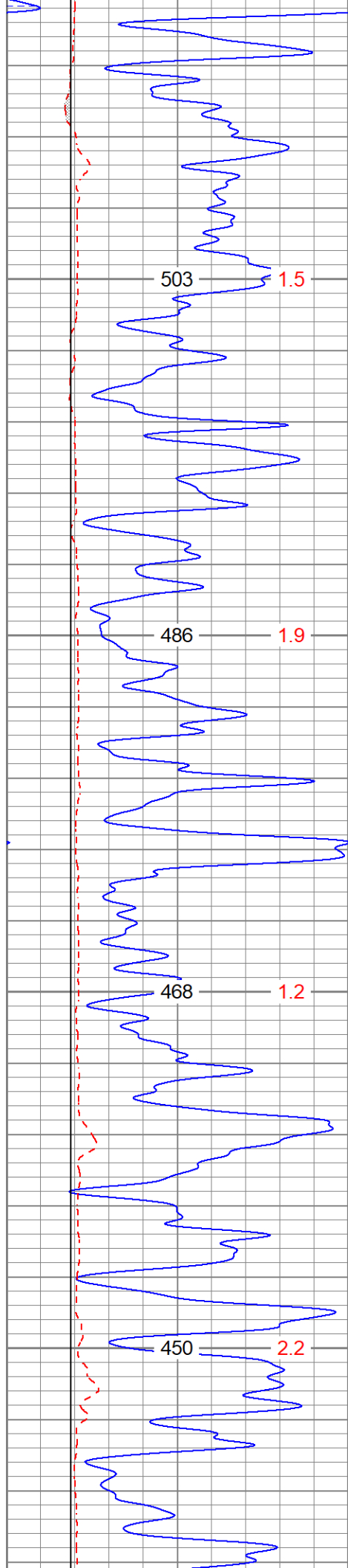


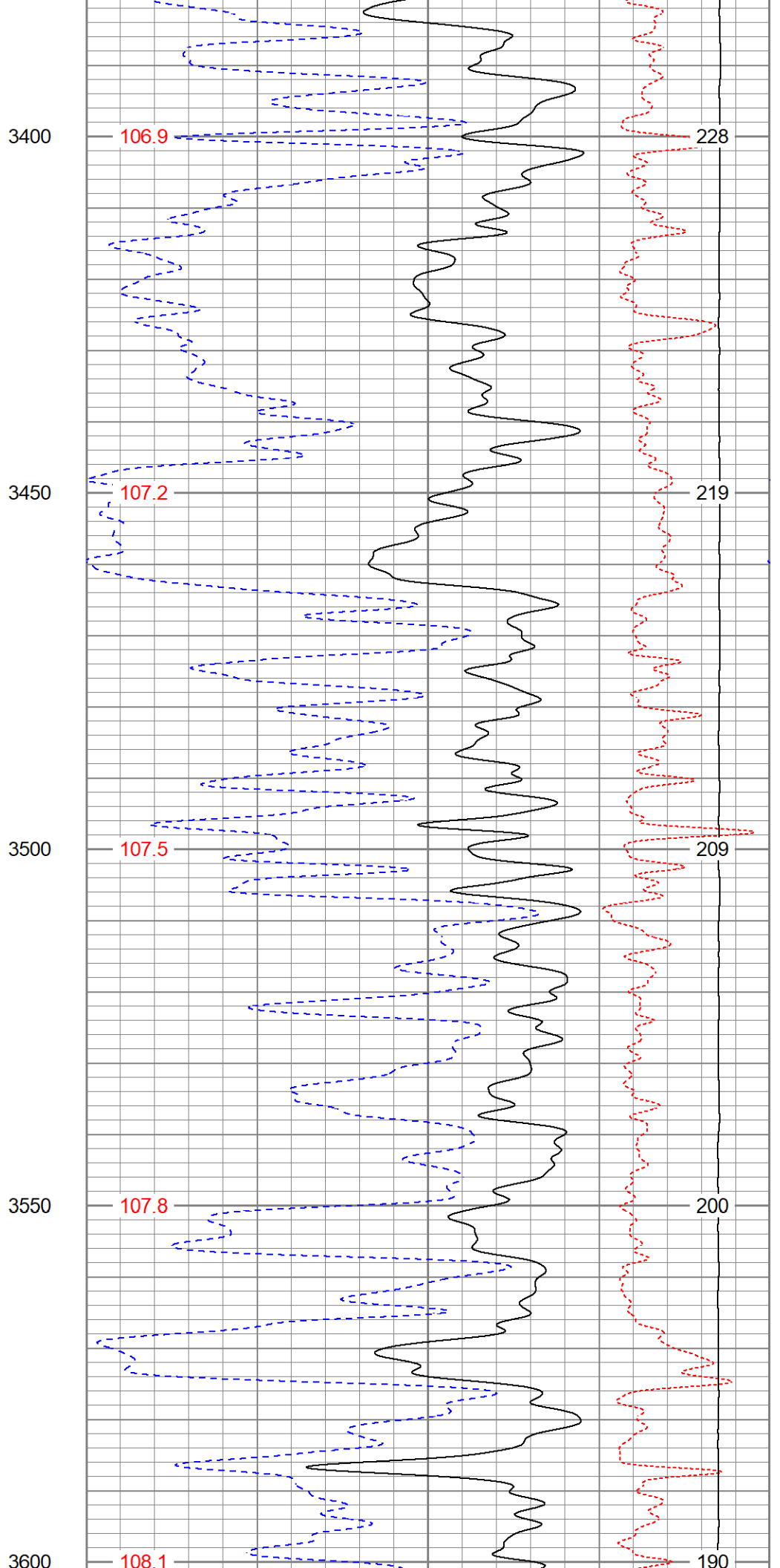
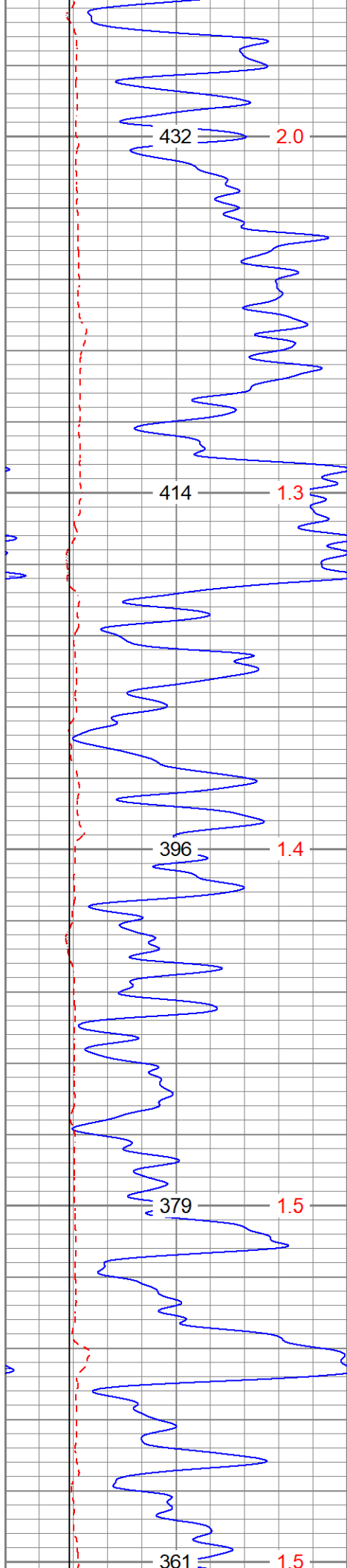


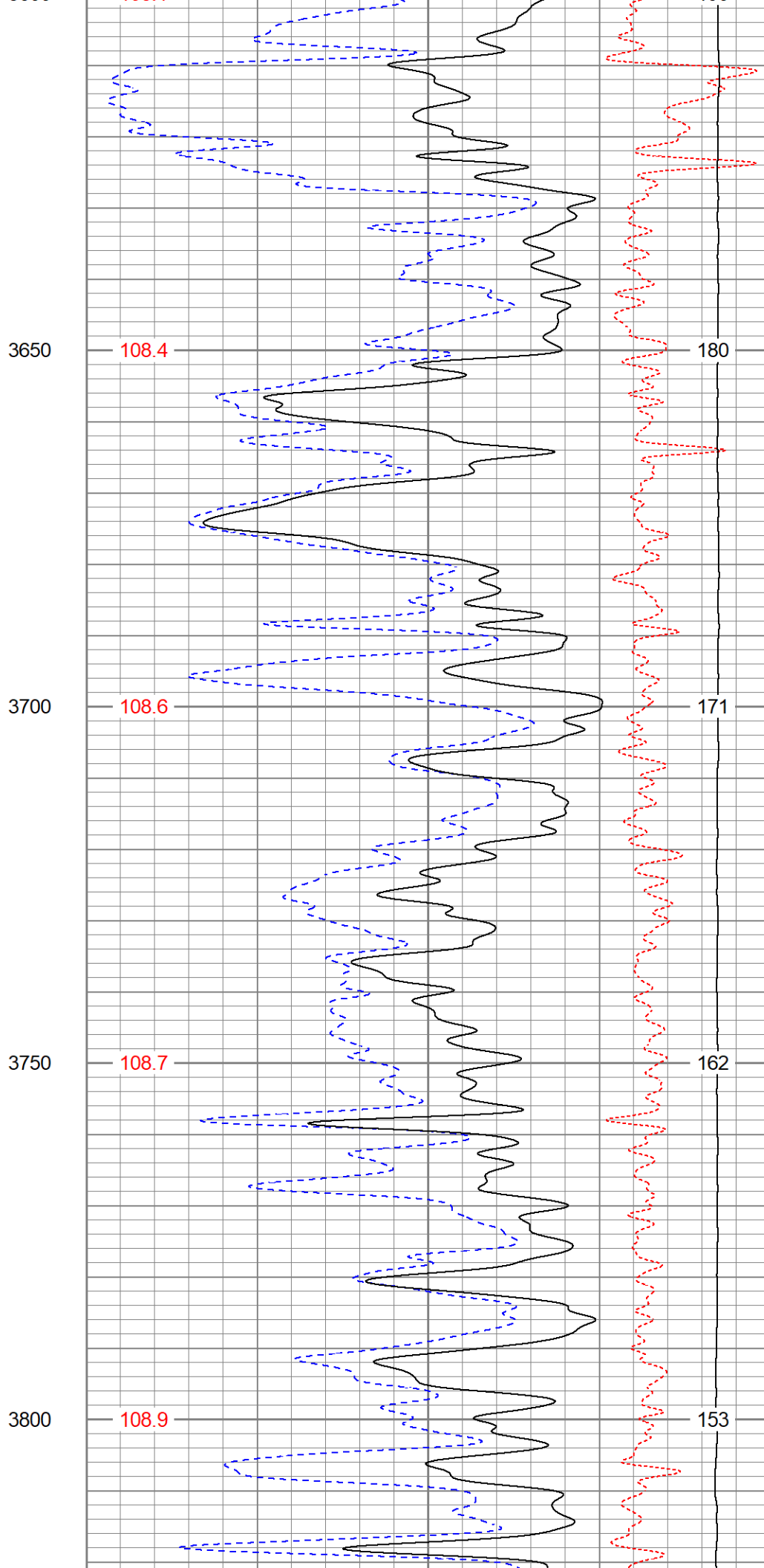
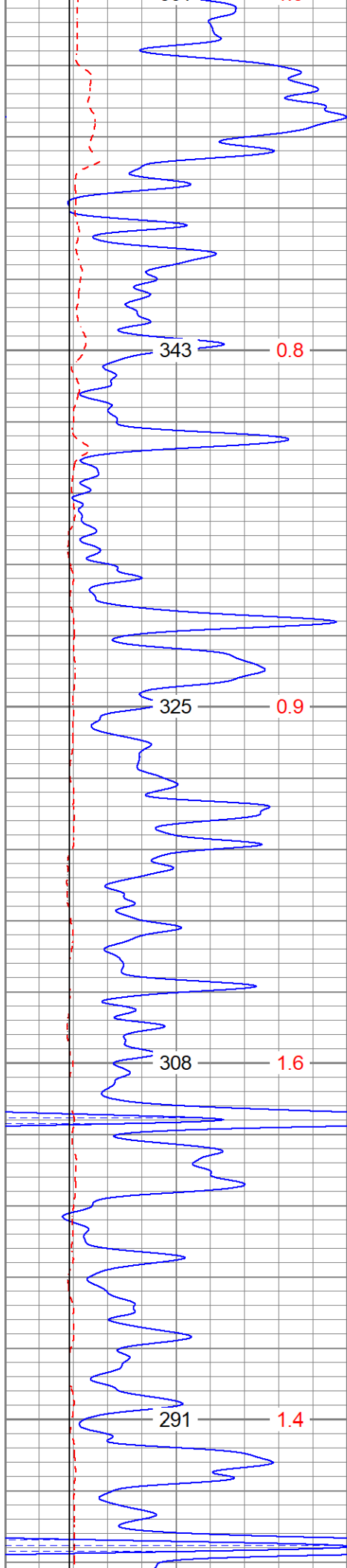


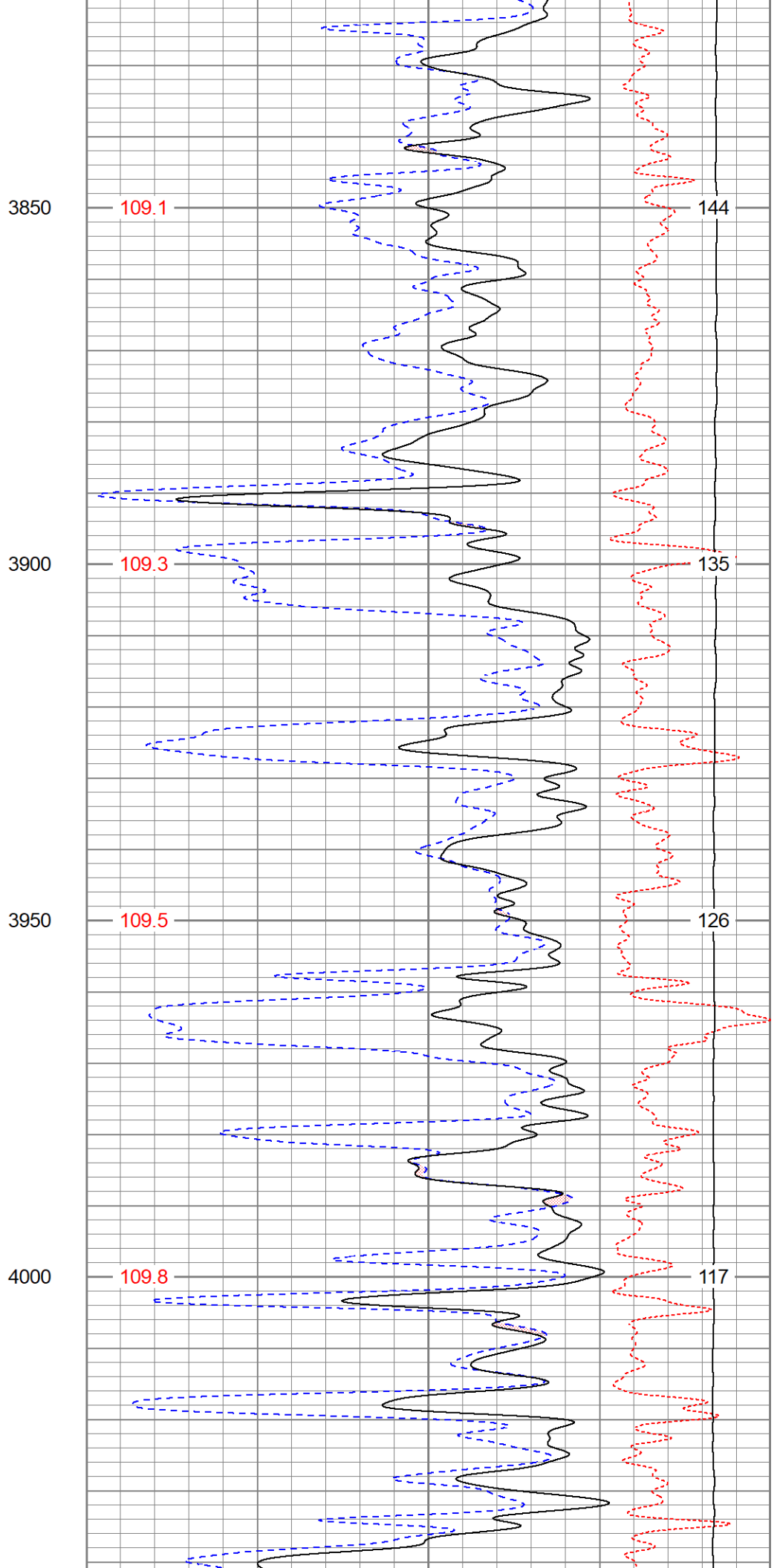
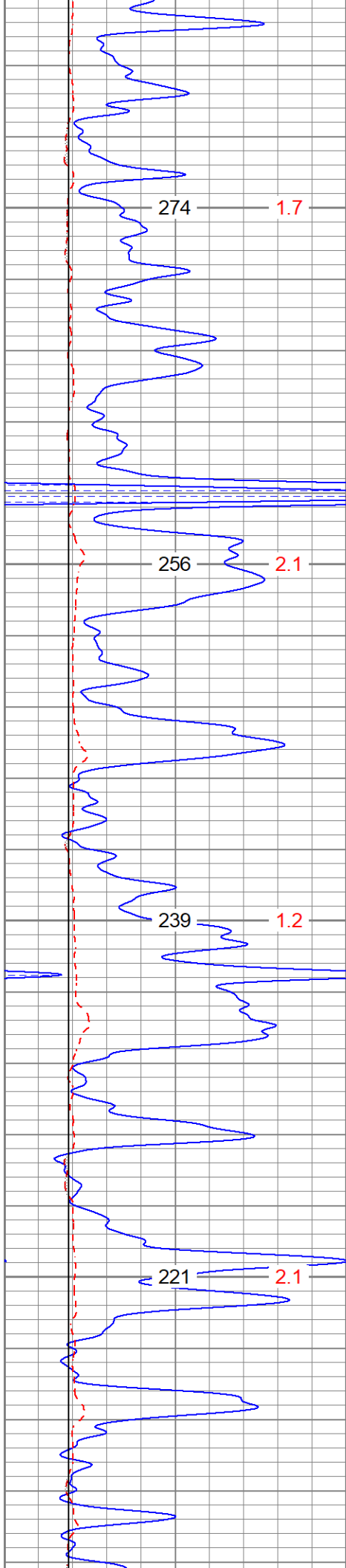


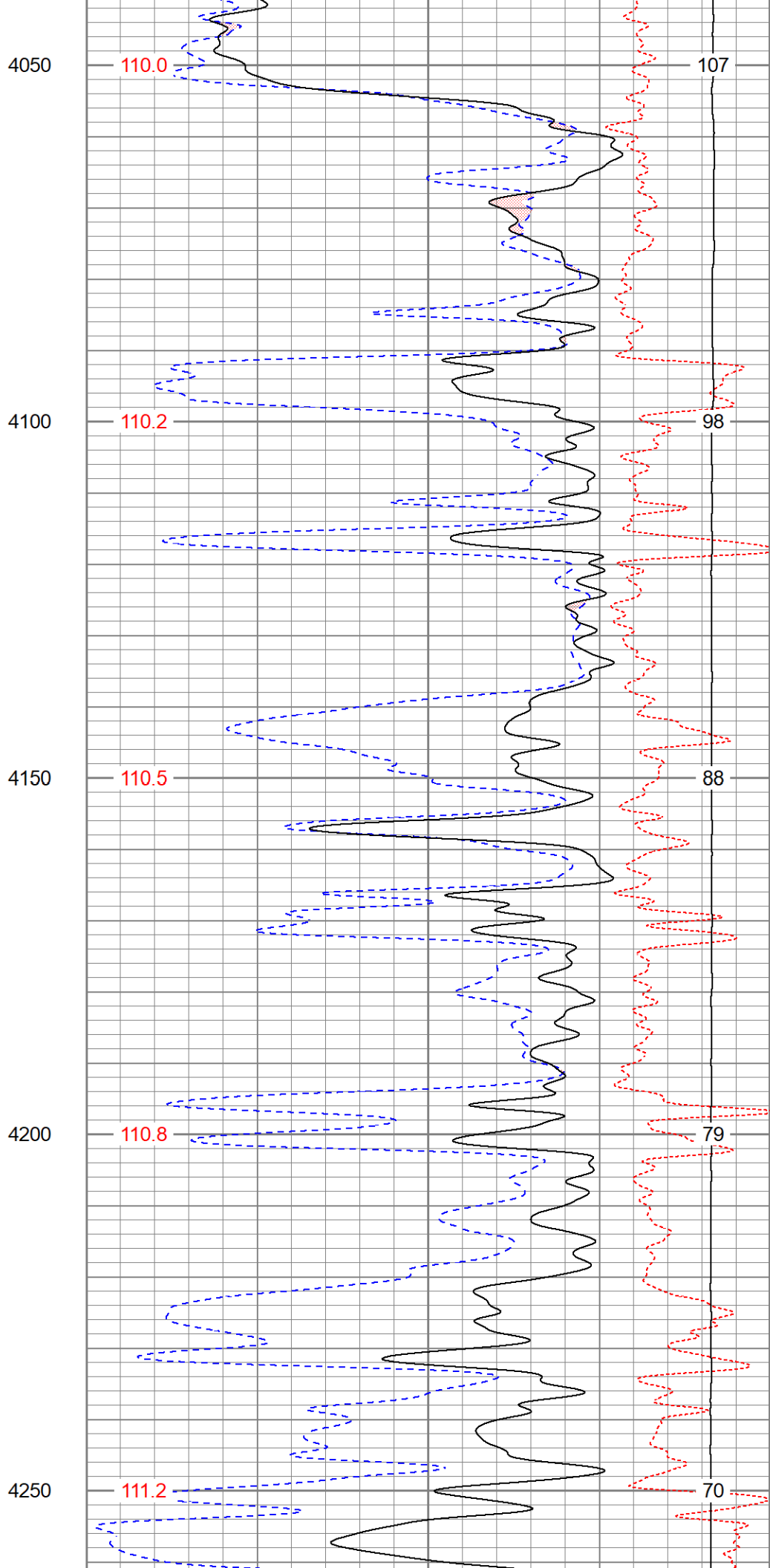
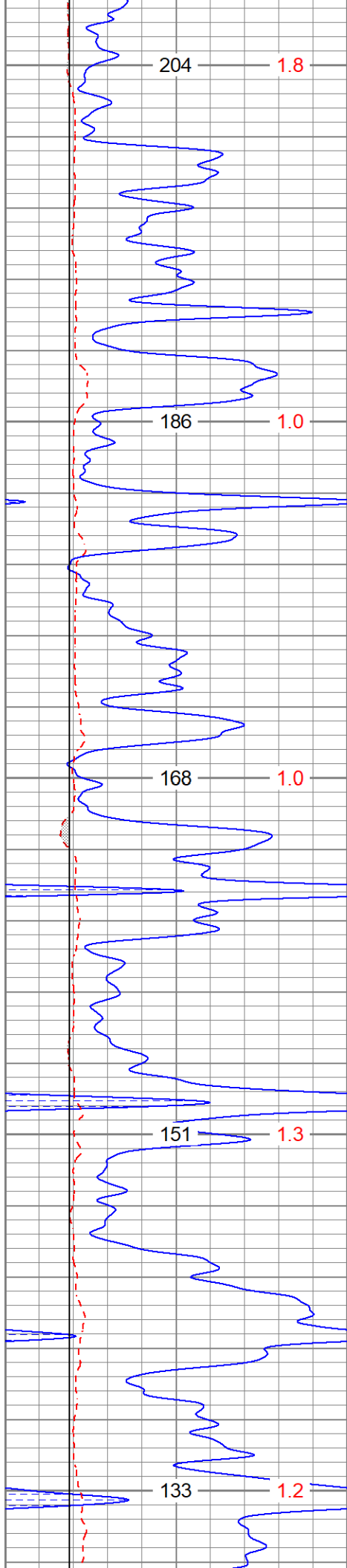


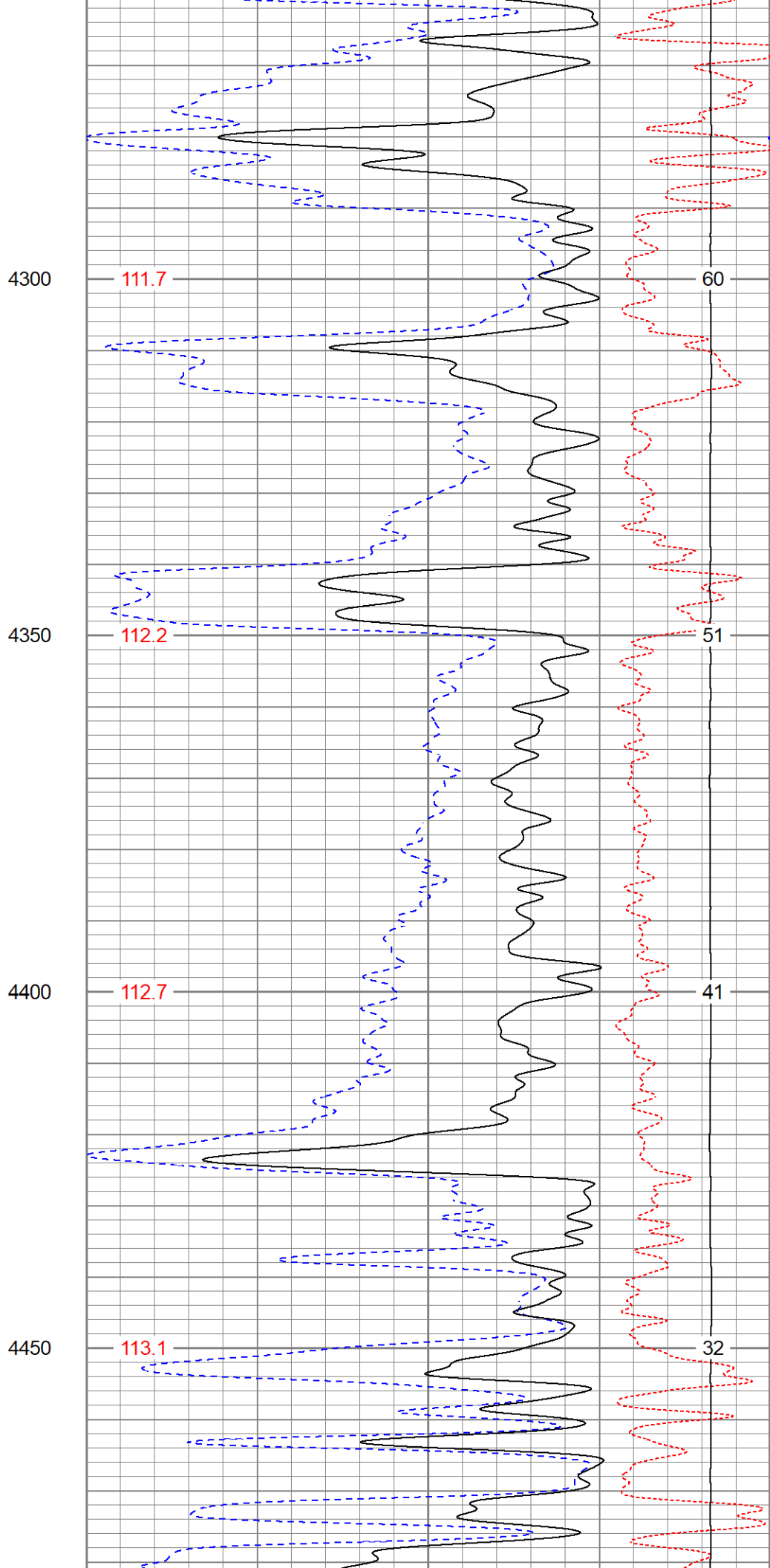
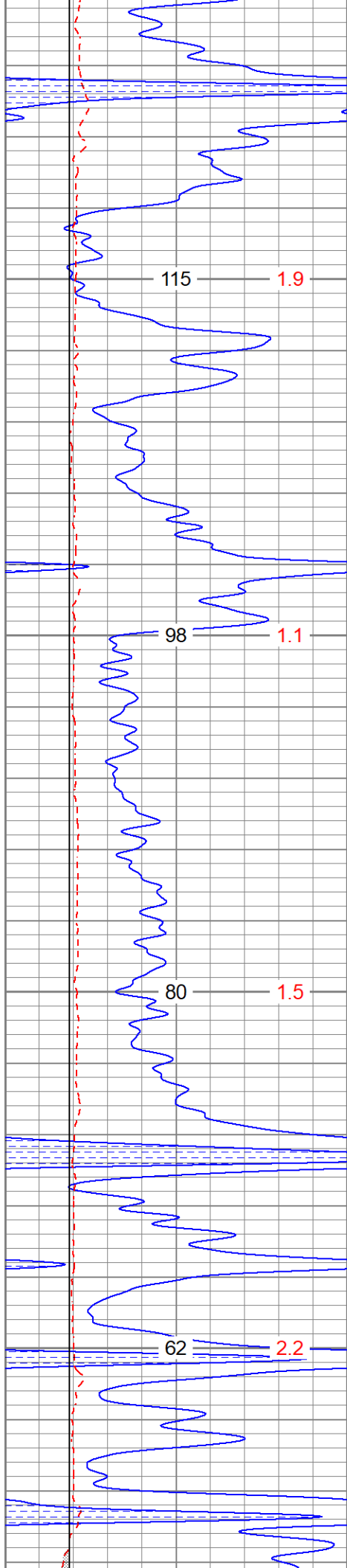


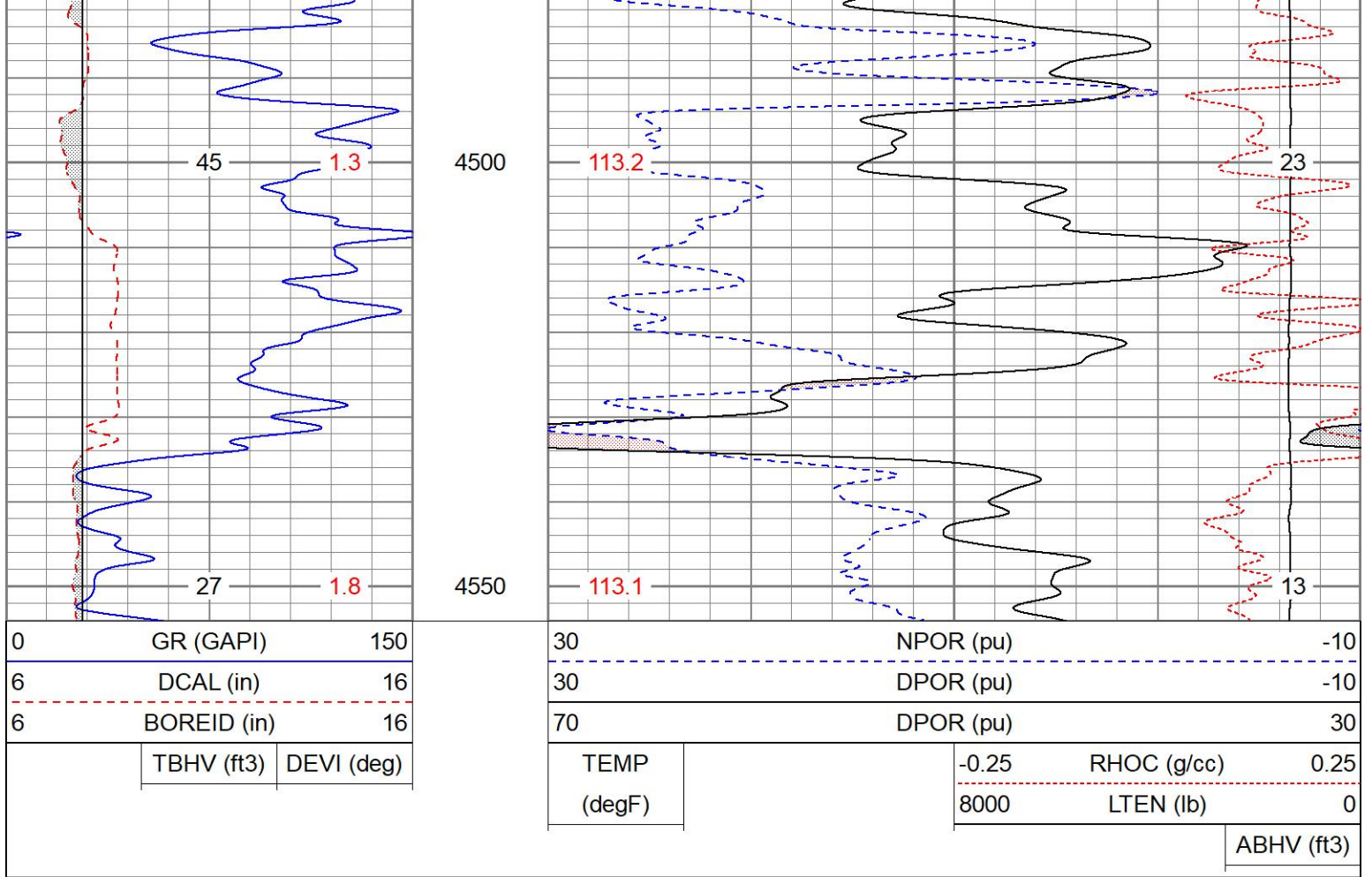






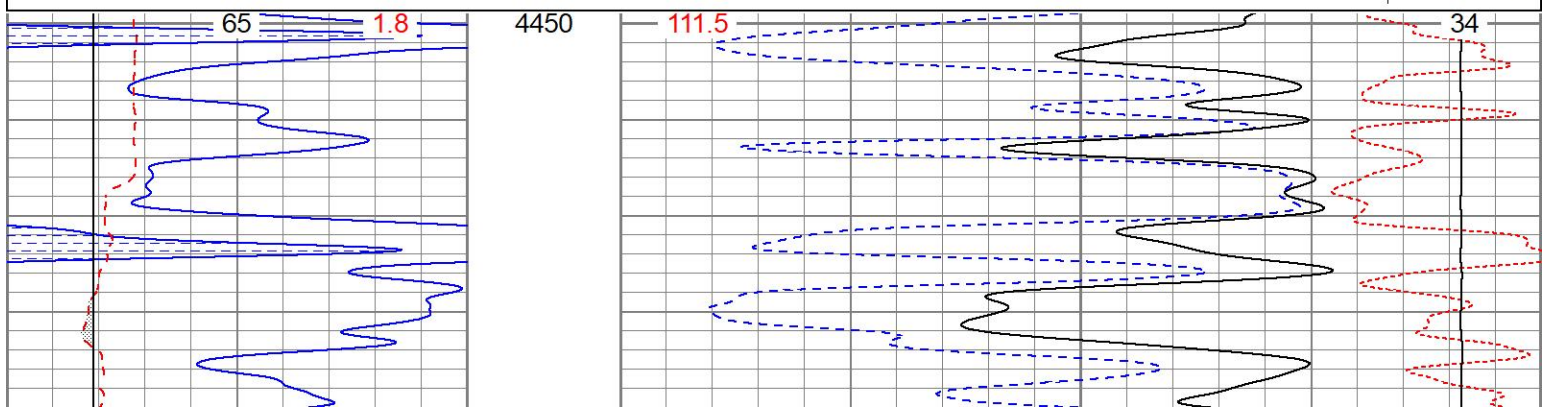
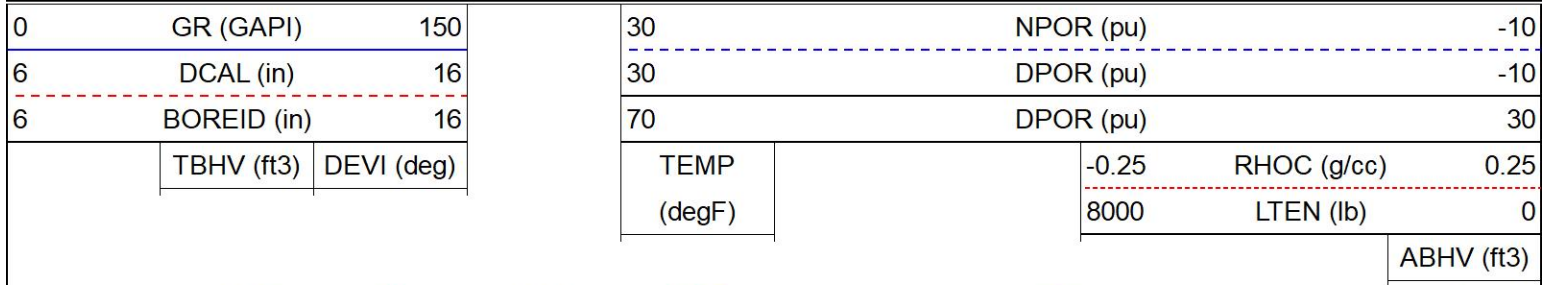


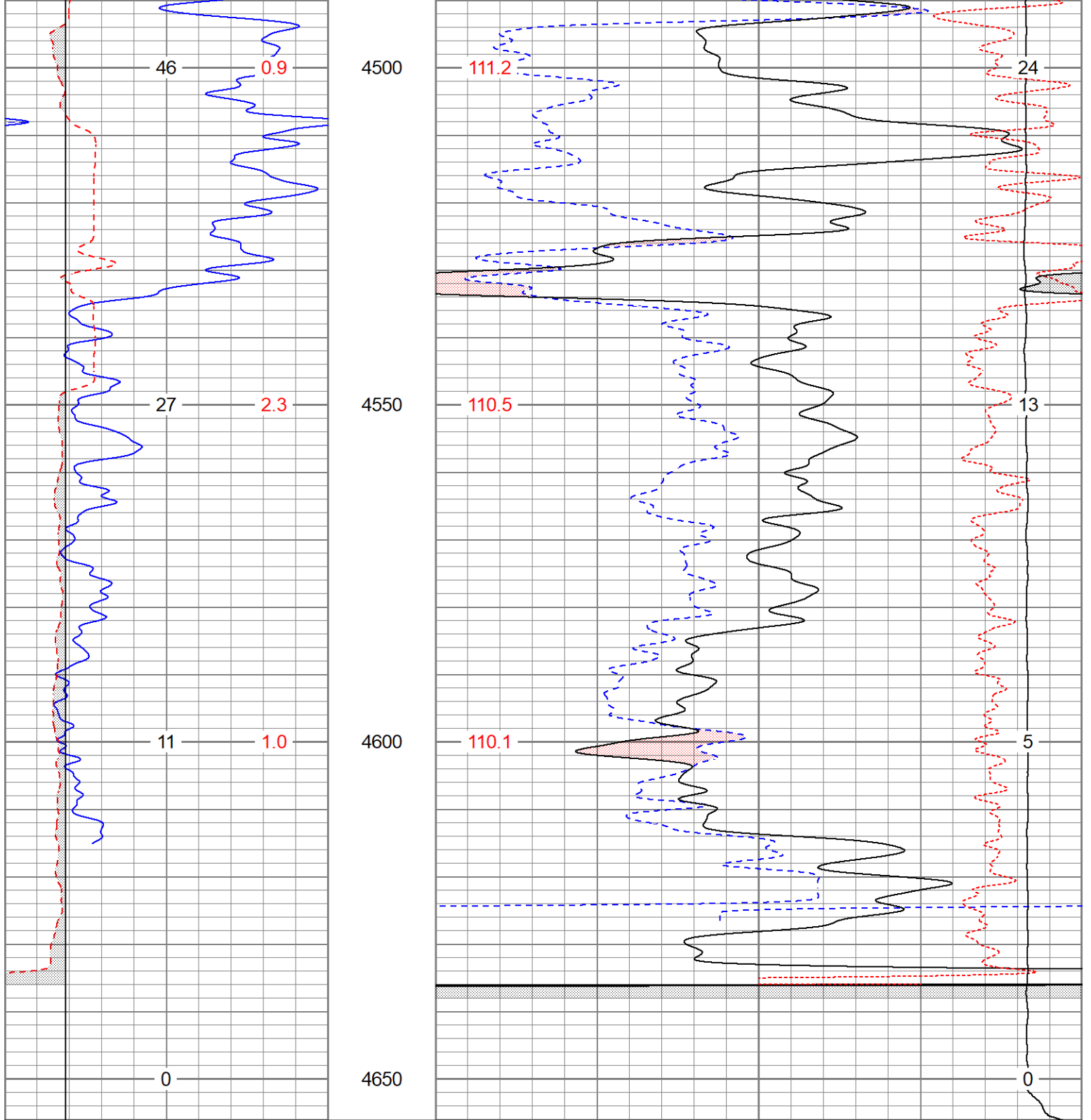




REPEAT SECTION

Database File ppthefountainhead#1oh.db
 Dataset Pathname pass3.1
 Presentation Format digital_kcdnl
 Dataset Creation Mon Oct 03 18:58:14 2022
 Charted by Depth in Feet scaled 1:240





0	GR (GAPI)	150
6	DCAL (in)	16
6	BOREID (in)	16
	TBHV (ft3)	DEVI (deg)

30	NPOR (pu)	-10
30	DPOR (pu)	-10
70	DPOR (pu)	30
TEMP (degF)	-0.25	RHOC (g/cc) 0.25
	8000	LTEN (lb) 0
		ABHV (ft3)

Calibration Report

Database File ppthefountainhead#1oh.db
 Dataset Pathname pass3.1
 Dataset Creation Mon Oct 03 18:58:14 2022

Dual Induction Calibration Report

Serial-Model:	1842-ADM
Surface Cal Performed:	Mon Sep 20 22:00:42 2021
Downhole Cal Performed:	Mon Sep 20 22:00:24 2021
After Survey Verification Performed:	Mon Sep 20 22:05:52 2021

Surface Calibration

Readings				References			Results	
Loop:	Air	Loop		Air	Loop		m	b
Deep	0.018	0.672	V	0.000	350.000	mmho/m	535.475	-9.896
Medium	0.003	0.769	V	0.000	400.000	mmho/m	522.607	-1.745
Internal:	Zero	Cal		Zero	Cal		m	b
Deep	0.018	0.672	V	0.000	350.000	mmho/m	535.240	-9.549
Medium	0.003	0.768	V	0.000	550.000	mmho/m	718.637	-2.088

Downhole Calibration

Readings				References			Results	
Internal:	Zero	Cal		Zero	Cal		m	b
Deep	-0.219	349.905	mmho/m	-0.343	349.810	mmho/m	1.000	-3.124
Medium	-0.118	399.722	mmho/m	-0.226	399.745	mmho/m	1.000	-3.108
Shallow	2.536	0.025	V	500.000	2.000	Ohm-m	165.330	-1.504

After Survey Verification

Readings				Targets			Results	
Internal:	Zero	Cal		Zero	Cal		m'	b'
Deep	0.000	0.000	mmho/m	-0.219	349.905	mmho/m	1.000	-3.124
Medium	0.000	0.000	mmho/m	-0.118	399.722	mmho/m	1.000	-3.108
Shallow	0.000	0.000	Ohm-m	500.000	2.000	Ohm-m	1.000	0.000

Neutron Calibration Report

Serial Number:	AD5139
Tool Model:	ADMY5139
Performed:	(Not Performed)
Calibrator Value:	1 NAPI
Calibrator Reading:	1 cps
Sensitivity:	1 NAPI/cps

Temperature Calibration Report

Serial Number:	WithMC	
Tool Model:	WMC	
Performed:	Fri Apr 19 12:15:04 2019	
	Reference	Reading
Low Reference:	0.00 degF	0.00 degF
High Reference:	1.00 degF	1.00 degF
Gain:	1.00	
Offset:	0.00	
Delta Spacing	1	

Inclinometer Calibration Report

Inclinometer Calibration Report

Performed:	Wed May 5 19:20:48 2021				
	Low Read.	High Read.	Low Ref.	High Ref.	
X Accelerometer	205.00	1843.00	-1.00	1.00	gee
Y Accelerometer	205.00	1843.00	-1.00	1.00	gee
Z Accelerometer					gee

Gamma Ray Calibration Report

Serial Number:	WithMC	
Tool Model:	WMC	
Performed:	Wed Jun 15 11:53:49 2022	
Calibrator Value:	1.0	GAPI
Background Reading:	0.0	cps
Calibrator Reading:	1.0	cps
Sensitivity:	1.1000	GAPI/cps