

MICRO LOG

Company BEAR PETROLEUM, LLC
 Well STEJSKAL #1
 Field STEFFEN SOUTH
 County PAWNEE
 State KANSAS

Company BEAR PETROLEUM, LLC
 Well STEJSKAL #1
 Field STEFFEN SOUTH
 County PAWNEE State KANSAS

Location: API #: 15-145-21830-0000
 660' FNL & 660' FEL
 SEC 16 TWP 21S RGE 20W

Permanent Datum GROUND LEVEL Elevation 2106
 Log Measured From KELLY BUSHING 6' A.G.L
 Drilling Measured From KELLY BUSHING

Other Services
 CDL/CNL/DIL
 SONIC

Elevation

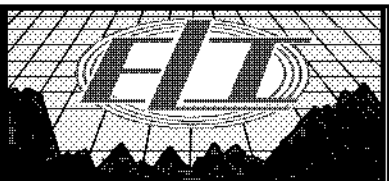
Date	03/18/18
Run Number	TWO
Depth Driller	4546
Depth Logger	4549
Bottom Logged Interval	4520
Top Log Interval	2000
Casing Driller	8 5/8" @ 1247
Casing Logger	1247
Bit Size	7 7/8
Type Fluid in Hole	CHEMICAL MUD
Density / Viscosity	9.2/53
PH / Fluid Loss	9.5/9.8
Source of Sample	FLOWLINE
Rm @ Meas. Temp	.40 @ 66F
Rmf @ Meas. Temp	.30 @ 66F
Rmc @ Meas. Temp	.48 @ 66F
Source of Rmf / Rmc	MEASUREMENT
Rm @ BHT	.21 @ 121F
Time Circulation Stopped	2 HOURS
Time Logger on Bottom	///
Maximum Recorded Temperature	121F
Equipment Number	3802
Location	HAYS, KANSAS
Recorded By	GUS PFANENSTIEL
Witnessed By	ROD ANDERSON

>>> Fold Here >>>

All interpretations are opinions based on inferences from electrical or other measurements and we cannot and do not guarantee the accuracy or correctness of any interpretation, and we shall not, except in the case of gross or willful negligence on our part, be liable or responsible for any loss, costs, damages, or expenses incurred or sustained by anyone resulting from any interpretation made by any of our officers, agents or employees. These interpretations are also subject to our general terms and conditions set out in our current Price Schedule.

Comments

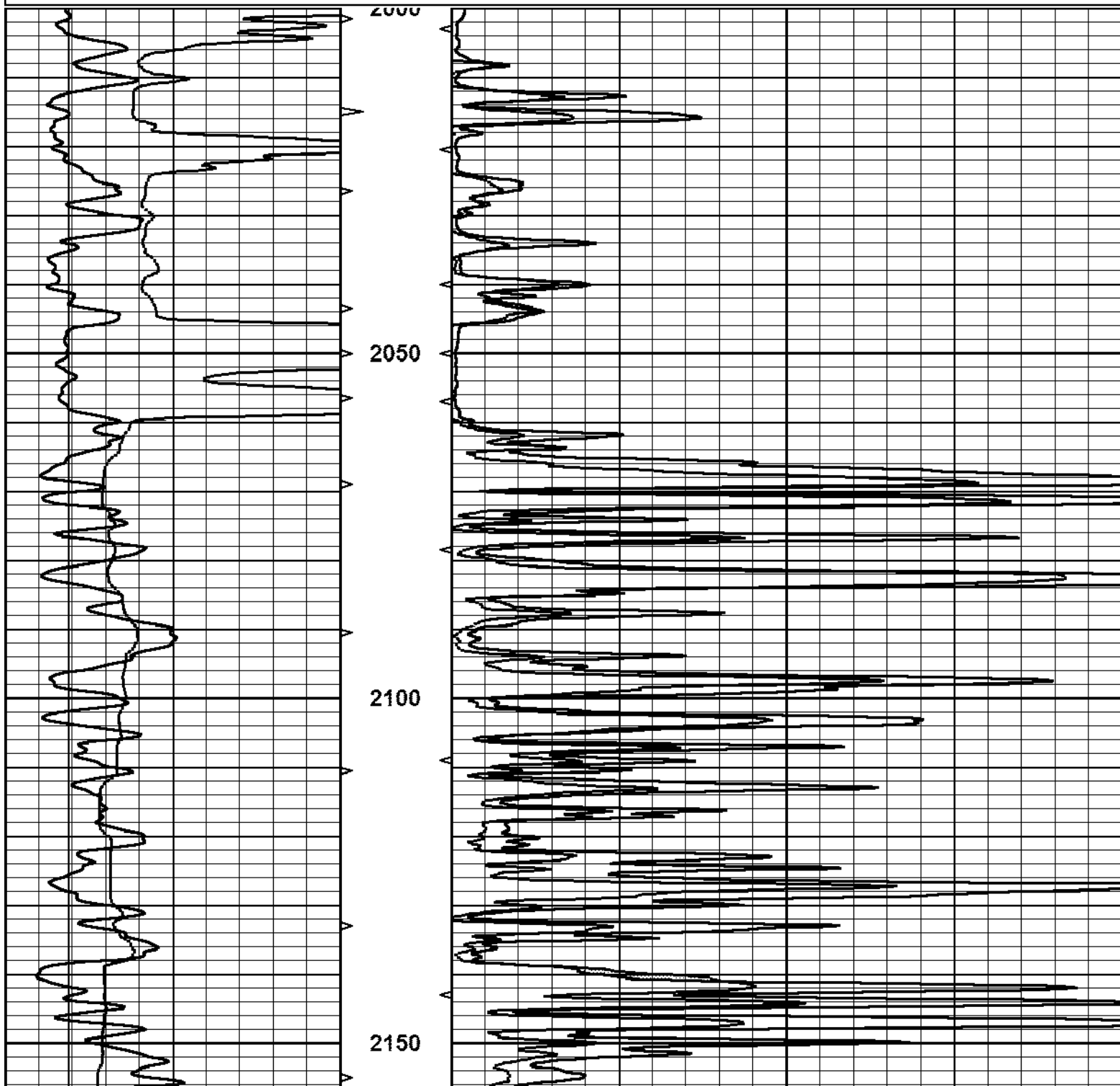
THANK YOU FOR USING ELI WIRELINE SERVICES, HAYS, KS. (785) 628-6395
 DIRECTIONS
 BURDETT GO TO RD. 345 NORTH 1 MILE,
 1/2 EAST, 3/4 NORTH, WEST INTO.

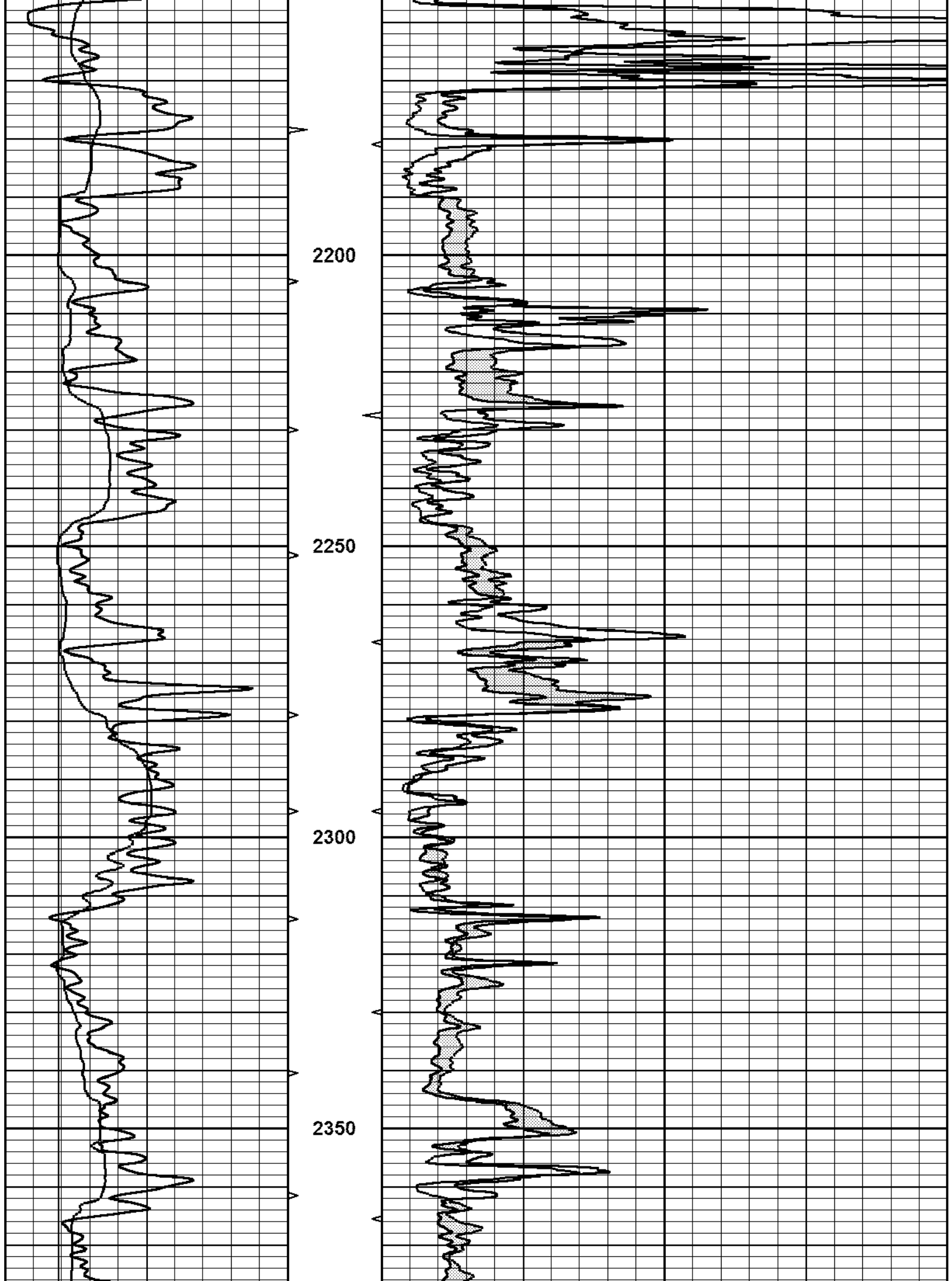


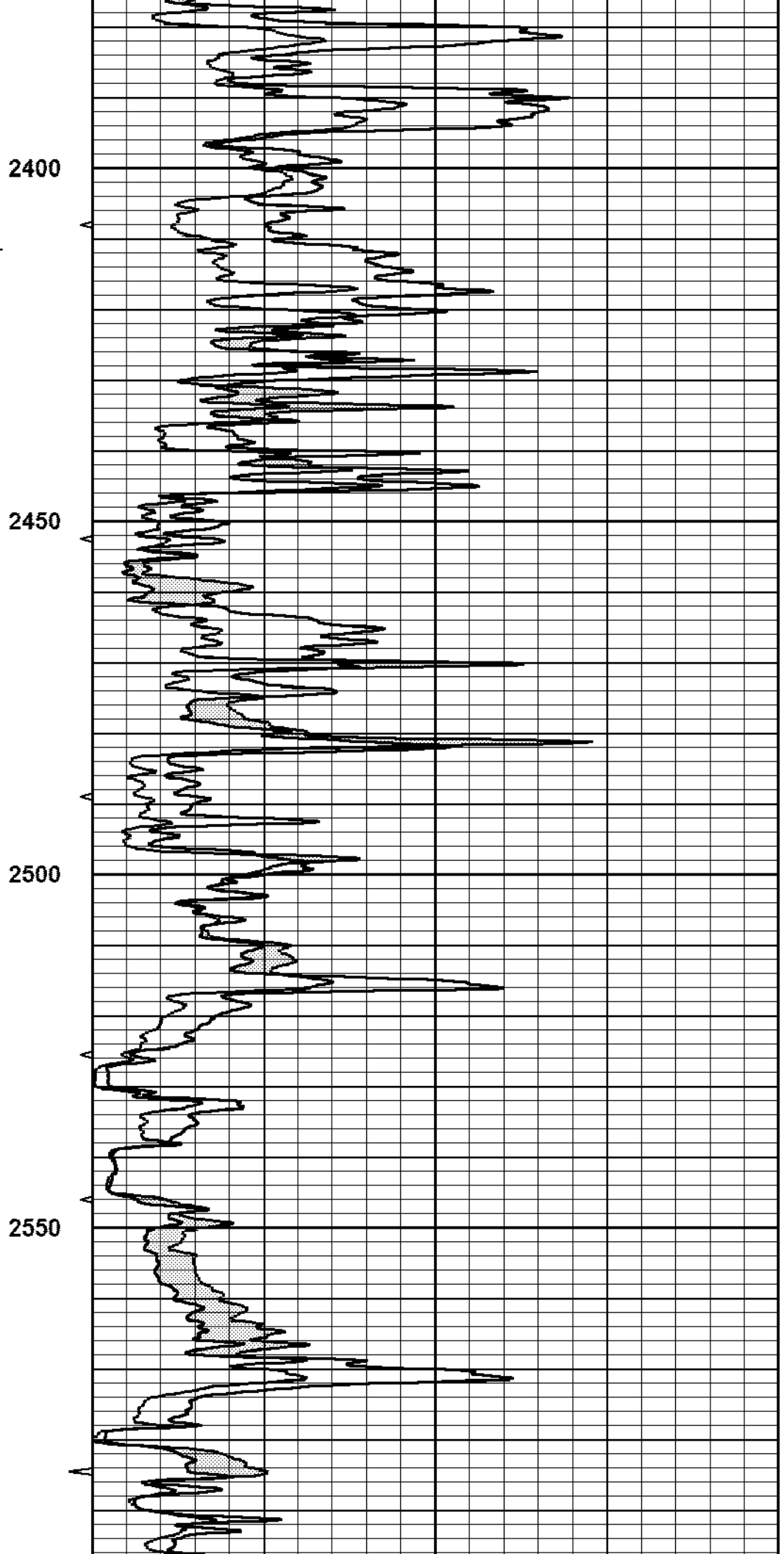
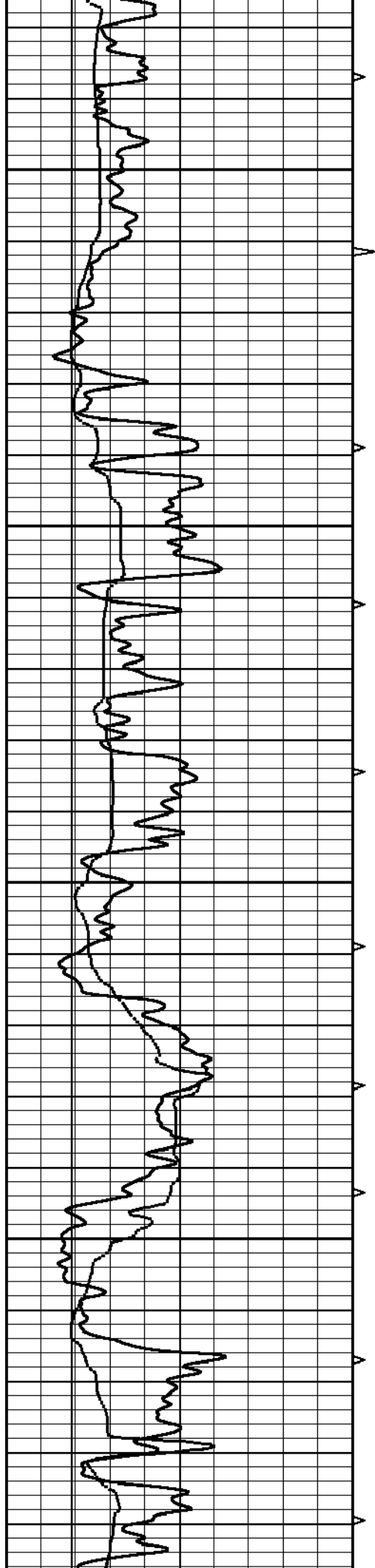
MAIN PASS

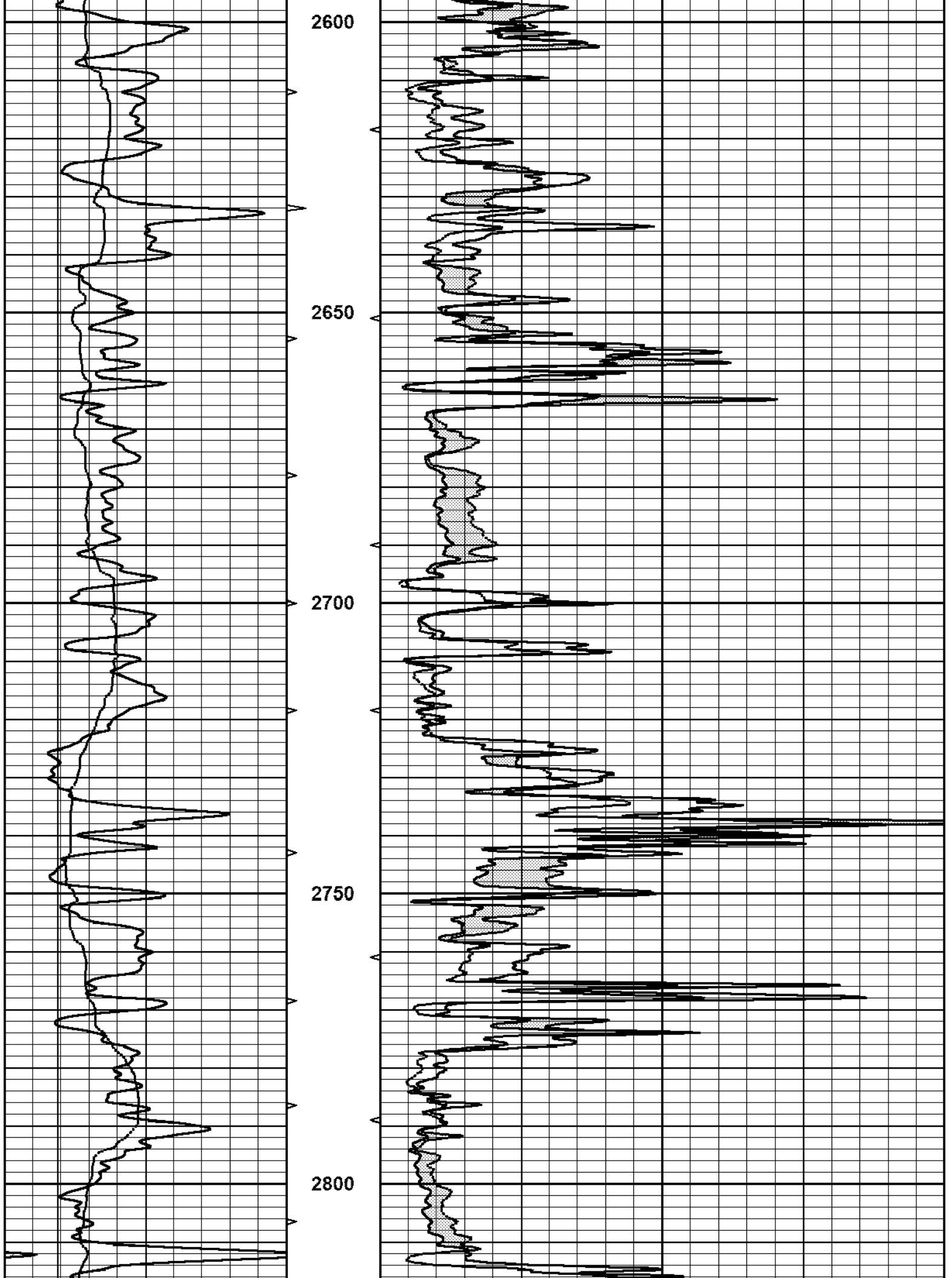
Database File 2373pe.db
 Dataset Pathname pass5MIC
 Presentation Format _micro
 Dataset Creation Sun Mar 18 10:57:17 2018
 Charted by Depth in Feet scaled 1:240

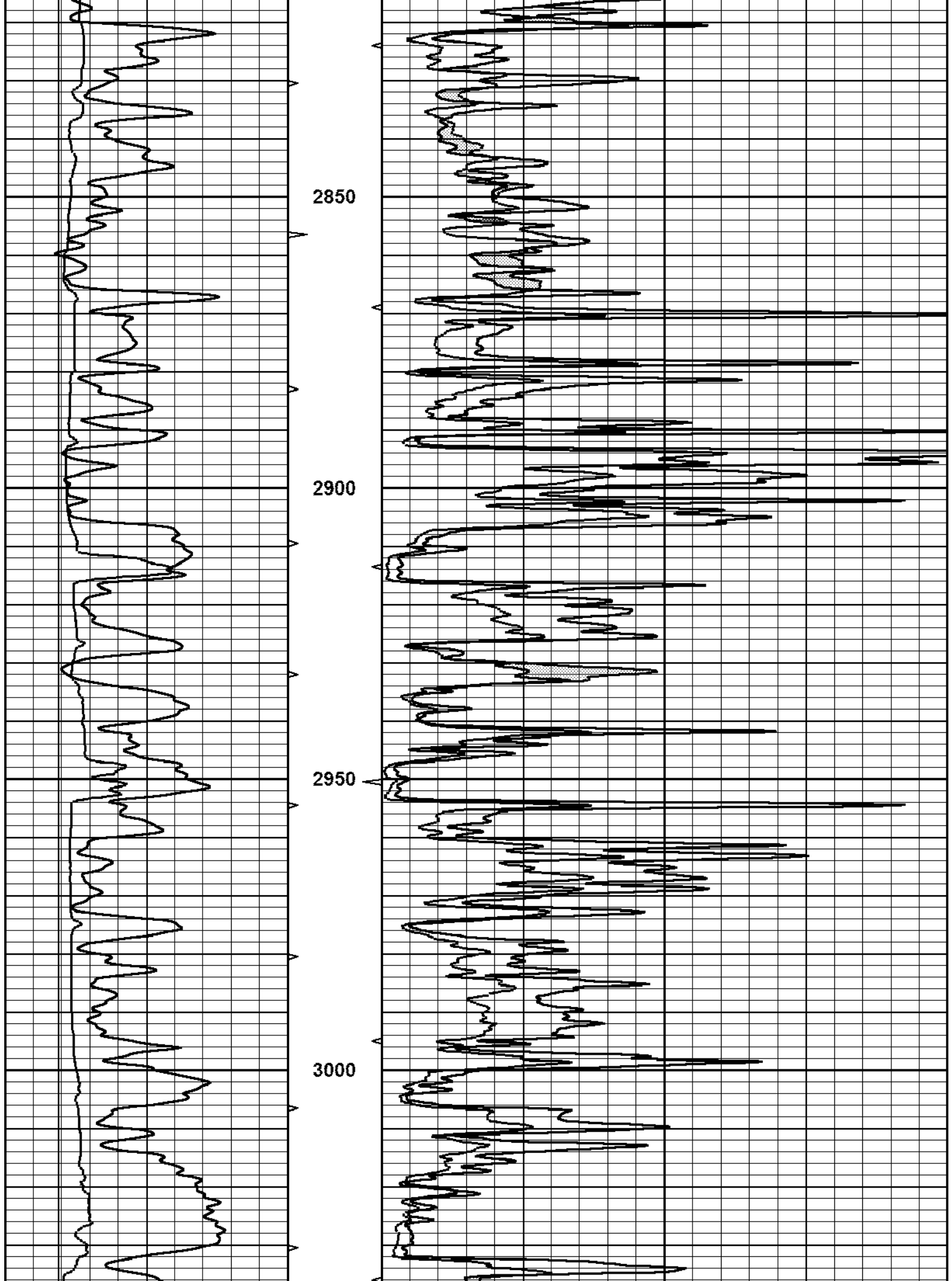
0	GAMMA RAY (GAPI)	150	ABHV	0	MEL1.5 (Ohm-m)	40
6	CALIPER (in)	16	(ft3)	0	MEL2.0 (Ohm-m)	40
			10	0		
			TBHV			
			(ft3)			
			0	10		

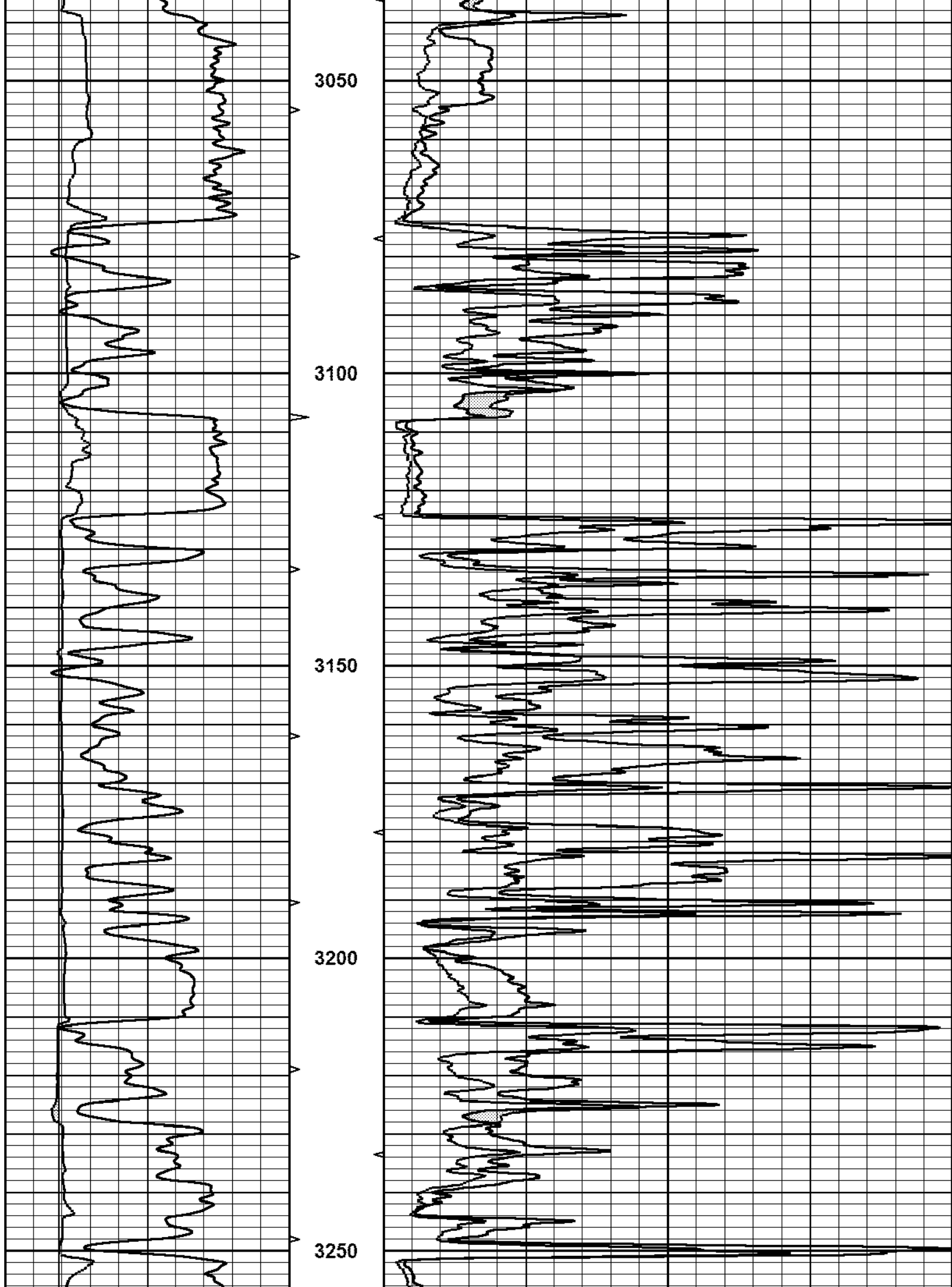


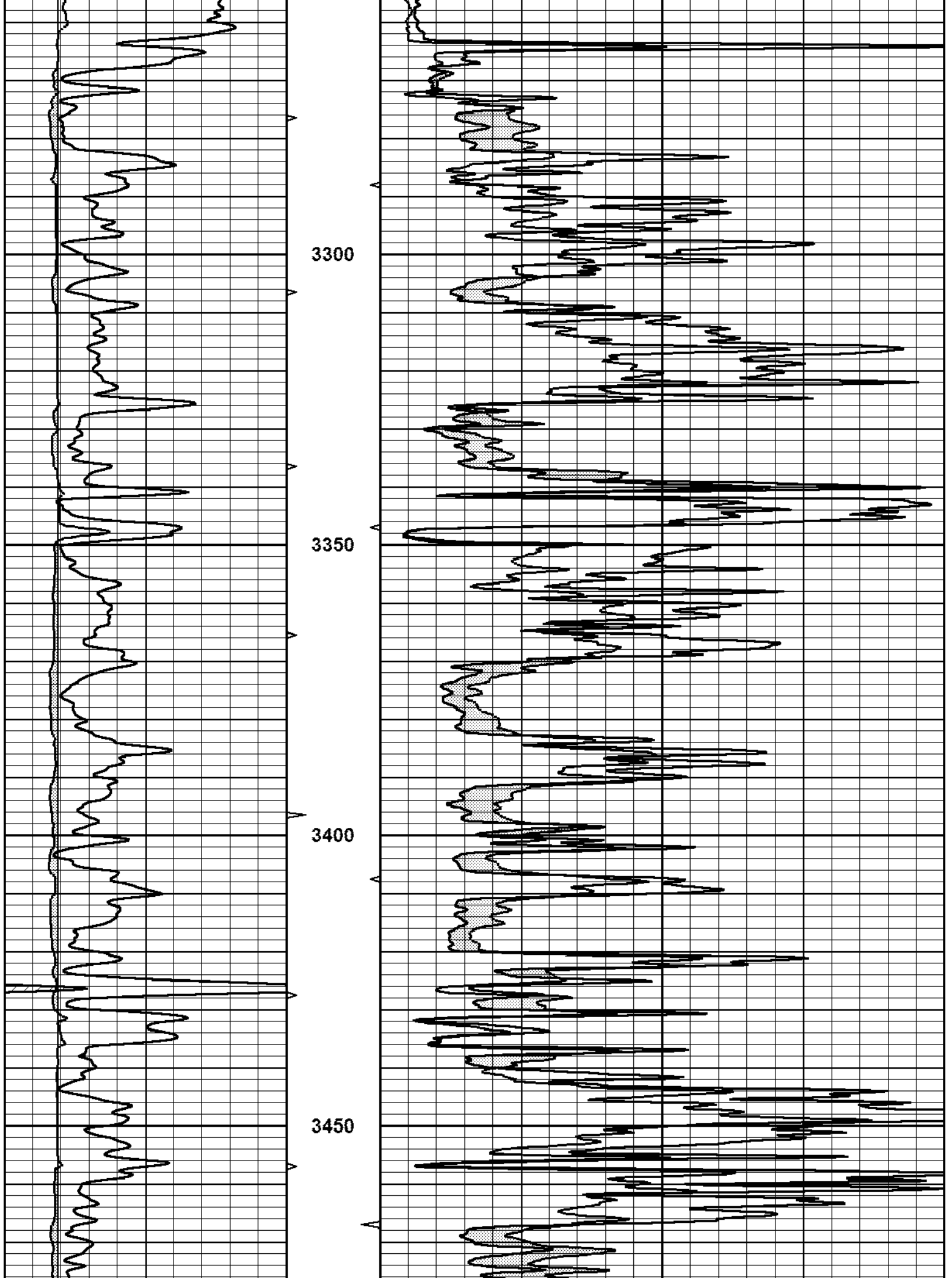


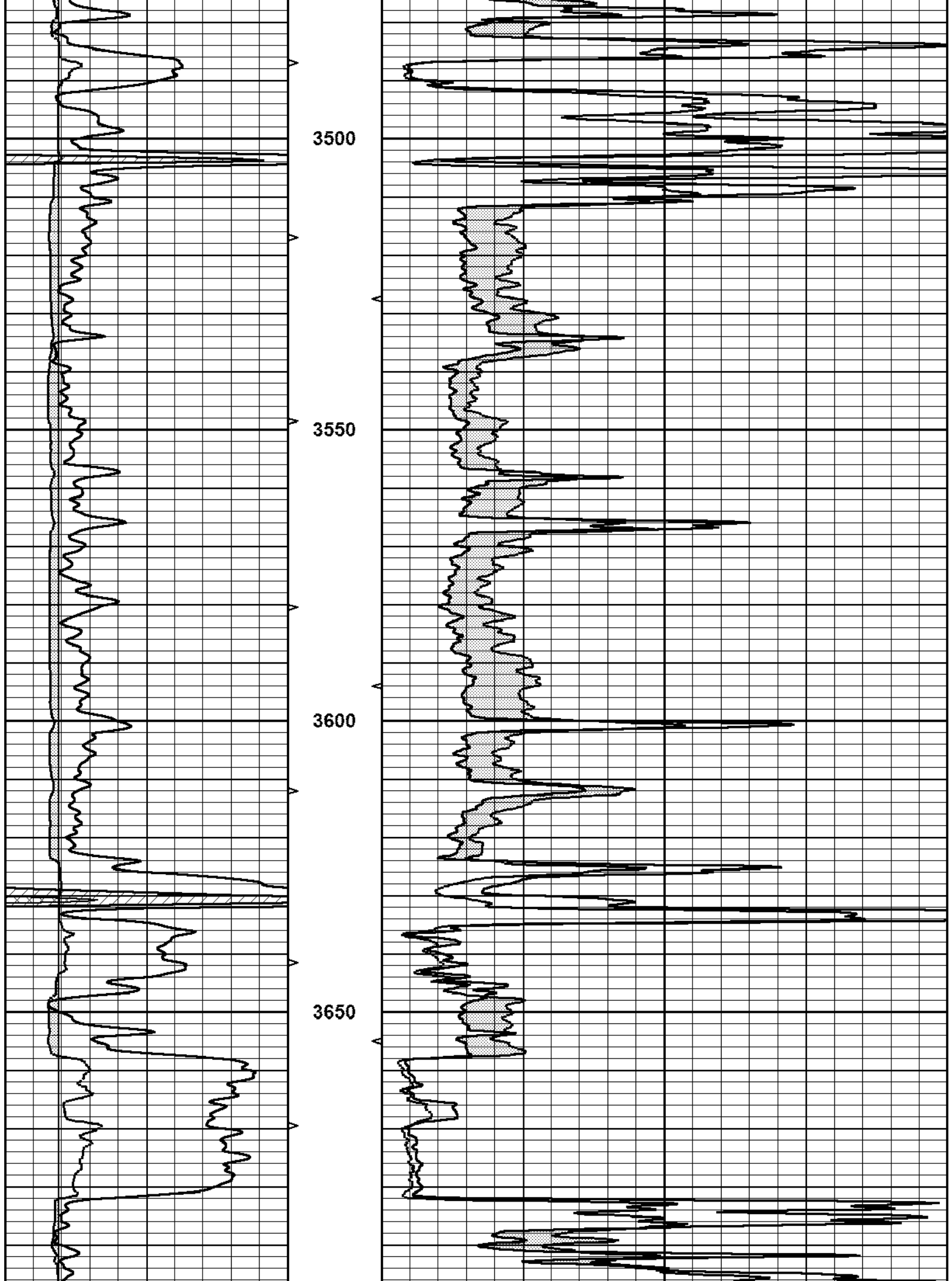


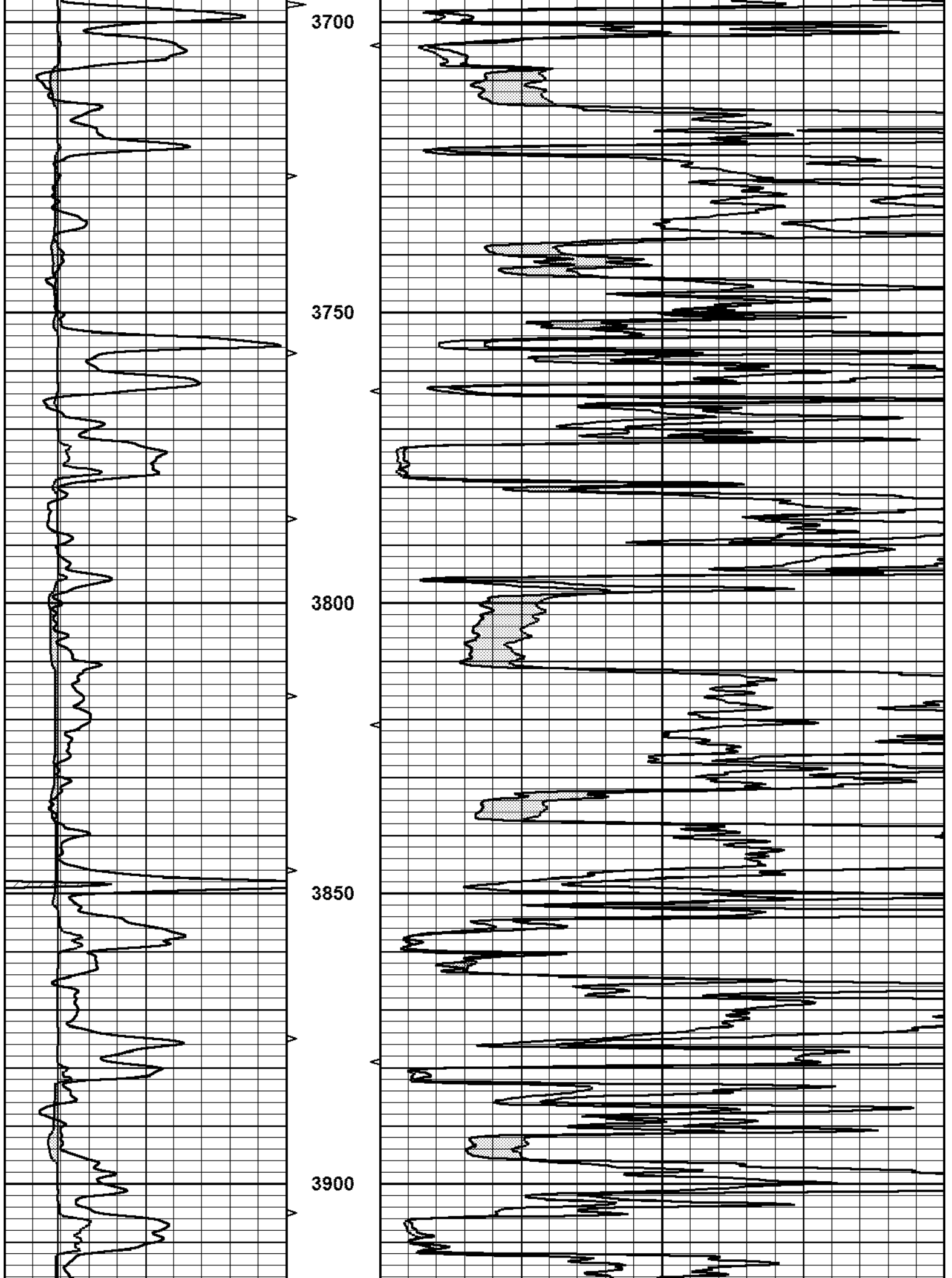


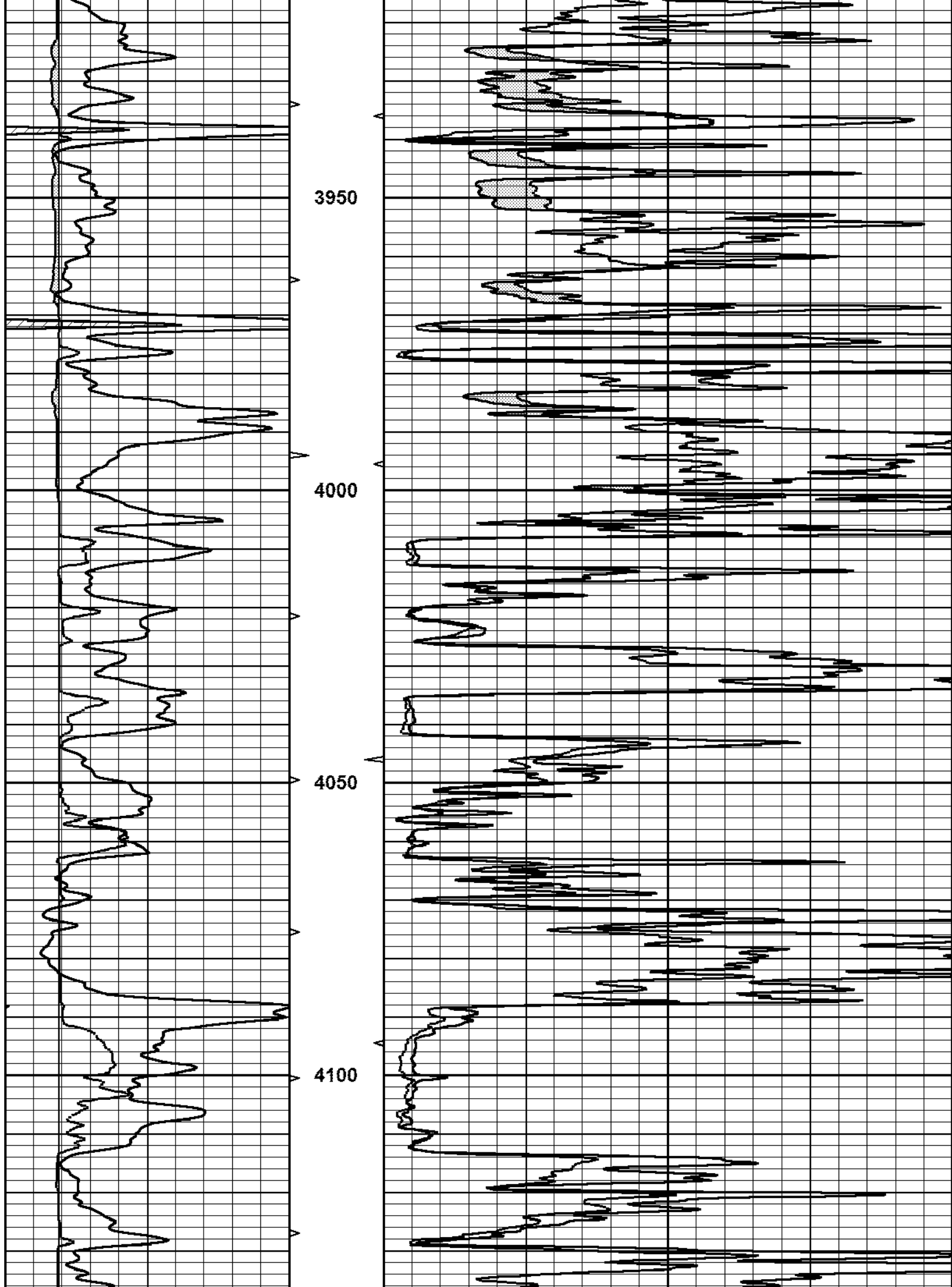


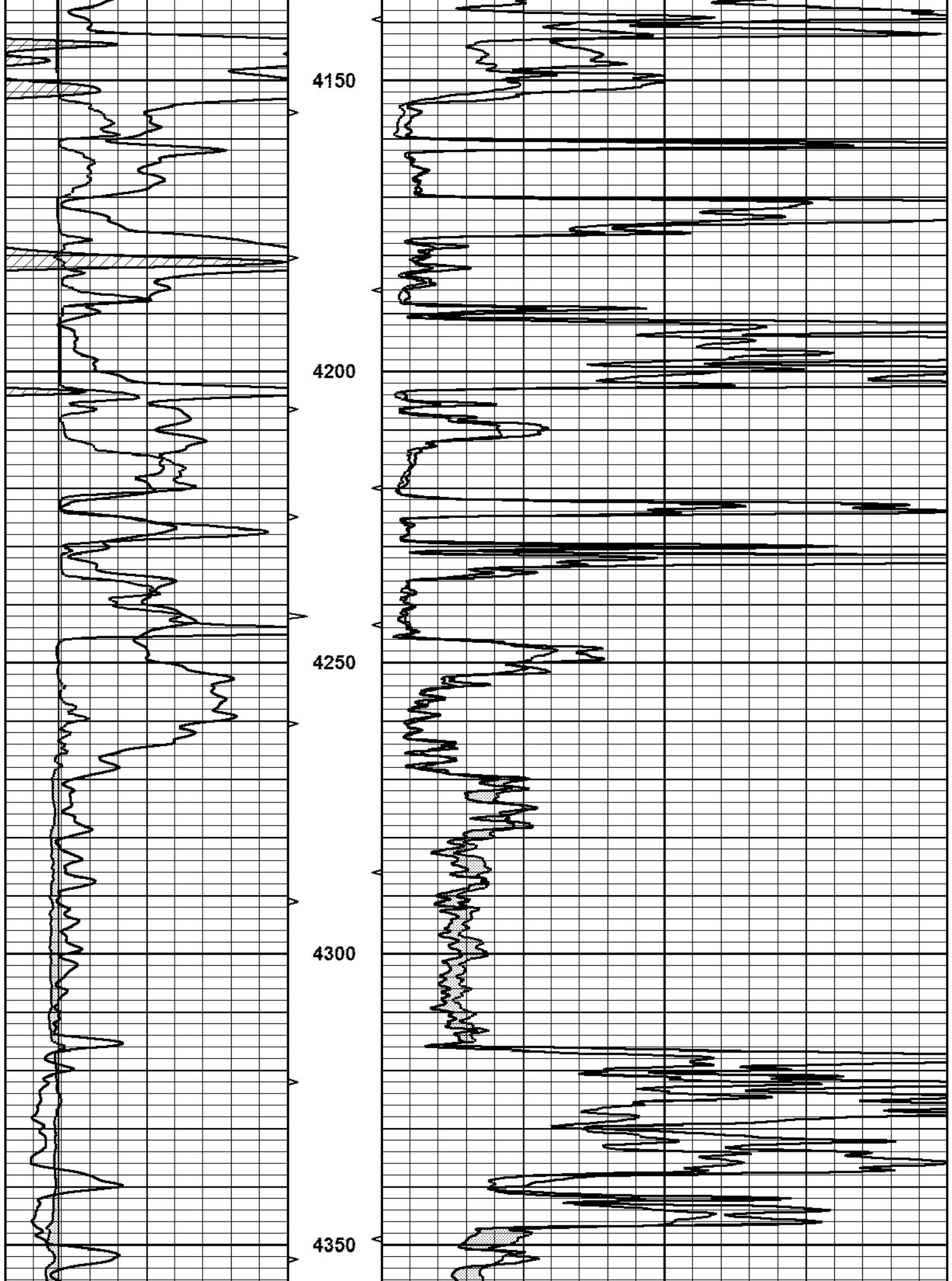


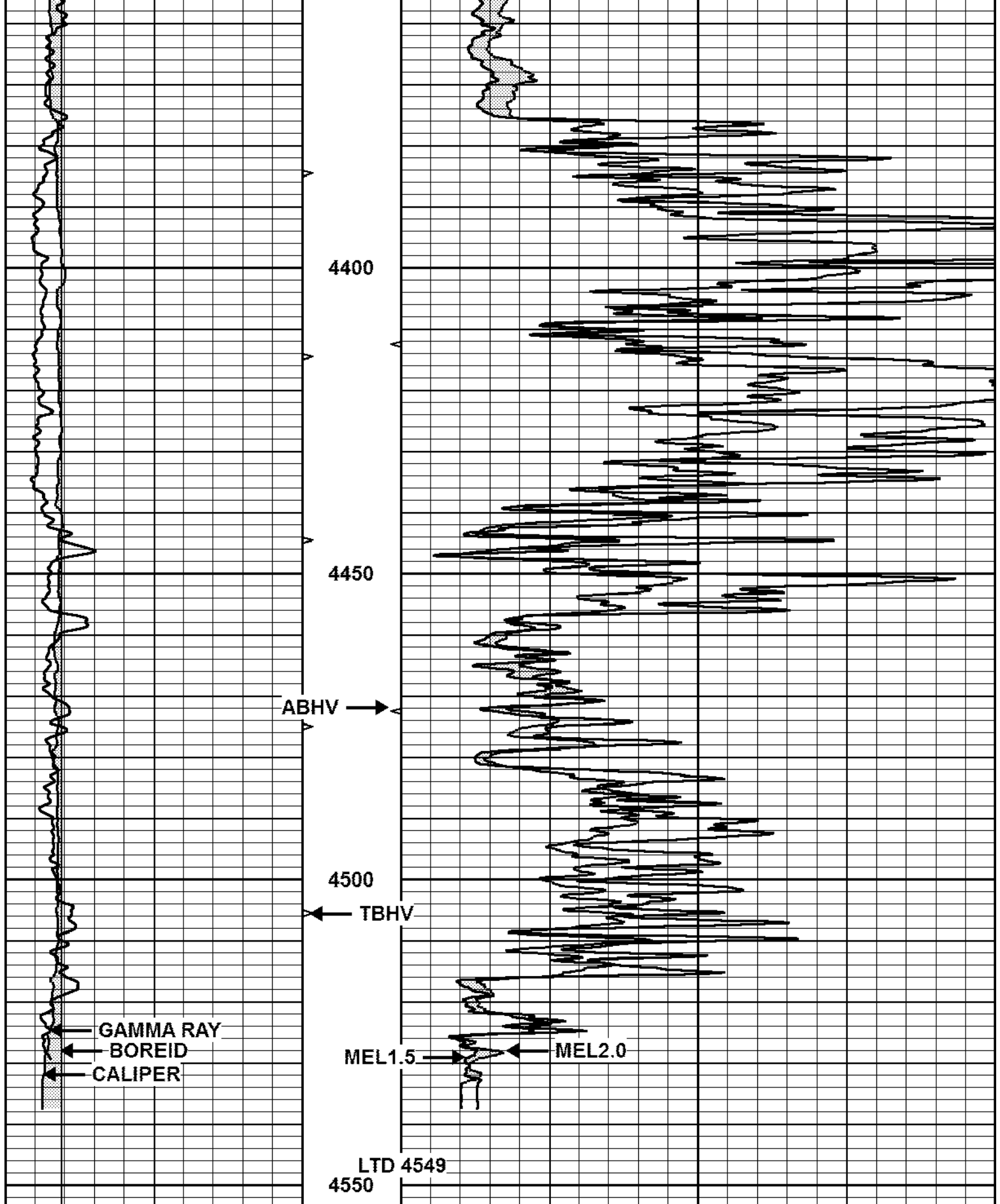










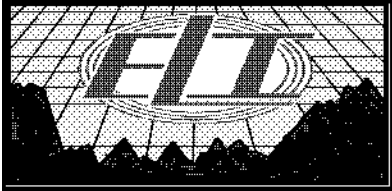


0	GAMMA RAY (GAPI)	150	ABHV	0	MEL1.5 (Ohm-m)	40
6	CALIPER (in)	16	(ft3)	0	MEL2.0 (Ohm-m)	40

10 0

TRHV

TBHV
(ft3)
0 10



REPEAT SECTION

Database File 2373pe.db
 Dataset Pathname pass4RP
 Presentation Format _micro
 Dataset Creation Sun Mar 18 10:44:13 2018
 Charted by Depth in Feet scaled 1:240

0	GAMMA RAY (GAPI)	150	ABHV	0	MEL1.5 (Ohm-m)	40
6	CALIPER (in)	16	(ft3)	0	MEL2.0 (Ohm-m)	40
			10 0			
			TBHV			
			(ft3)			
			0 10			

